

FAA WESTERN REGION NEWS

Volume IV

Number 5

PUBLISHED BY THE EMPLOYEE-MANAGEMENT RELATIONS BRANCH

FOR THE PERSONNEL OF THE

FEDERAL AVIATION AGENCY

WESTERN REGION

JOSEPH H. TIPPETS --- Assistant Administrator

Editor . . . . . Bill Sullivan  
Associate Editor . . . . . Leo McElroy  
Art Director . . . . . Merrilyn Grix

Division & Staff Representatives

John Zentmyer . . . . . Air Traffic Division  
Miriam Maiten . . . . . Aviation Facilities Division  
Bernice Seat . . . . . Flight Standards (Engineering and Manufacturing)  
Newell Bradley . . . . . Flight Standards (Aircraft Management)  
Merrill Griffith . . . . . Flight Standards (Maintenance )  
Lee Lightfoot . . . . . Flight Standards (Operations )  
Glyndon Riley . . . . . Personnel & Training  
Robert Stockton . . . . . Airports  
Rosalind Meyer . . . . . Accounting  
Gayle Hollebrands . . . . . Budget  
Neva Mathews . . . . . Administrative Services  
Penny Ronnie . . . . . Regional Counsel  
Ruth Bentley . . . . . Medical  
  
James Nielsen . . . . . Security  
  
George Davis . . . . . Photography  
Virginia Marrison . . . . . Photography  
Herbert Faintich . . . . . Photography  
Frank Wiltz . . . . . Photography  
Regional Office Print Shop . . . . . Printing and Assembling  
Regional Office Mail Room . . . . . Distribution



## From The Desk Of The Assistant Administrator

I am pleased to give special recognition in the Awards Issue of Western Region News, to the individuals who have been recommended by their supervisors for Outstanding Ratings and Sustained Superior Performance Awards.

These individual accomplishments are quite varied, however there are also recognizable patterns.

Operational and management personnel, for example, have shown such qualities as positive leadership -- superior knowledge of equipment, procedures and regulations -- completing assignments well ahead of schedule and allowing the government to realize earlier due-dates -- accurate records and reports which are clearly written, complete and on time, etc. Clerical personnel for their part have assumed additional duties -- developed methods to increase accuracy and save time -- and performed many functions on their own initiative with minimum supervision.

These examples of energetic and keen desire to promote the Federal Aviation Agency, have caused your supervisors to document your superior performance.

At this same time I wish to take the opportunity to thank all Western Region employees whose extra efforts have so capably helped to meet schedules in face of the many changing responsibilities assigned to the Western Region.

I have had the opportunity to meet many of you personally during the current year and fully appreciate the work you are doing.

I hope that many of you will also receive these awards in the future. The challenges and opportunities are certainly here.

Again I wish to thank all of you and feel confident that your efforts will make the coming year even more successful.

*Joseph H. Lippert*

OUTSTANDING PERFORMANCE

To qualify for an Outstanding Performance Rating, the performance of official duties must Significantly Exceed the normal requirements of the position in ALL aspects.

Throughout the Western Region, the following received OUTSTANDING PERFORMANCE RATINGS and in conjunction therewith, SUSTAINED SUPERIOR PERFORMANCE CASH AWARDS:

R M Altmeyer	L G De Merritt	E S Hilliard	N E Merkel	H E Seabrook
J L Anderson	R M Dennis	L L Hink	J H Miller	M B Seat
A E Andrews	B C Delancey	E T Hopkins	M H McFarlane	S A Sell
S R Andrews	A D Devine	W F Horn	F S McKnight	W H Sermon
J L Applebury	T F Dowling	M Hunt	J A Milton	G K Seymour
W H Atkins	L C Drexel	D P Hutchins	L D Mitchell	G B Simmons
G S Baldwin	D A Earnshaw	C H Jacobson	K L Mudd	E P Simonds
C B Batchelor	E H Farnsworth	E G Johnson	R A Munkres	G L Simonson
L H Beckfeld	L F Farrar	D L Jones	M L Murillo	R R Simpson
R H Bell	M R Finn	E L Jones	J S Nichols	L B Smith
J L Bispo	W M Flener	J J Keyser	M C Nickerson	R A Stegall
C M Broughton	M K Fox	A R King	J V Nielsen	W A Stephens
J W Brubaker	D L Fraley	K A King	R L Olson	M E Stewart
C H Butler	F A Frampton	R E Kirby	F Orr	W L Stillmaker
J F Cannon	M R Freeman	G A Kittelson	T Page	H G Swift
F S Cardone	E L Fuhrman	S D Knight	T L Parli	R B Talbot
L E Carpenter	W R Gadow	B D Koven	V D Pattison	M E Taylor
D W Chapman	J A Garrison	D P Kunellis	D E Pearson	W F Teuscher
P F Cheplin	A S Gaspar	J L Larson	R R Pearson	R Timmerhoff
G A Chew	C S Gerard	R B Lasniewski	E Perlis	C T Trahan
E F Childs	C K Gordon	G P Lawing	R E Peterson	W J Tucker
J D Christensen	J C Graves	E H Lee	P Potter	L D Vertner
O N Chugg	L Guinn	W J Lehto	L P Renaud	H I Walker
M W Claar	C E Hagadorn	R R Leibert	K W Reynolds	C Watts
T Collins	C L Hamilton	W W Lottridge	R C Rhodes	G R Weeks
R F Cook	J L Harris	J Lovercio	J Sangiuliano	R E Wiley
J M Coppinger	J C Harris	J A Lundstrom	D F Sardam	K L Winters
M L Dalton	C S Hathaway	G P Lunstad	S Scally	R A Woodford
G E Davies	R J Hayton	Z F Mack	W G Schossow	J H Wray, Jr
N A Davis	M L Henry	J L Markie	F P Schriver	K S Wuthrich
M L Dean	J C Hill	G W Martin	G J Schwab	M P Yanney
		R J Masucci		

The following received OUTSTANDING PERFORMANCE RATINGS

L L Gannis                      A E Horning                      E S Kropf

SUSTAINED SUPERIOR PERFORMANCE AWARDS

To qualify for a Sustained Superior Performance Award the performance of official duties must noticeably exceed requirements of the position on the major aspects of the job for a period of at least six (6) months.

The following received SUSTAINED SUPERIOR PERFORMANCE AWARDS:

D E Abshire	I W Berryhill	F R Buckholtz	R A Coturri	G D Dicey
D J Aldecoa	O D Bingham	J M Bugbee	M A Covill	C R Dickow
H M Aleshire	H O Binkley	A B Bush	R T Cox	J M Dillon
L E Allen	R H Bishop	J P Byrne	L L Craig	F J Doering
R F Alvey	L T Blowers	J L Carlson	K C Croen	V R Dolim
R D Anderson	G H Bogan	B A Carmichael	W A Crouch	R E Domm
M I Arnold	R L Boman	L G Carriffee	W E Cullers	C E Drysdale
R V Autry	C R Boughton	D G Carroll	T G Culver	J M Duckworth
D F Backman	L W Bowen	W I Carter	L Cysewski	C L Duprel
H A Baker	E G Bowlby	A Cazares	R E Davies	R C D'Urso
A S Balco	D E Brink	J E Chalker	D M Davis	A D Duross
J J Baranway	E G Brink	J W Cheatham	W J Davis	W C Eastwood
W I Barry	W S Brix	M B Clark	J W Day	L J Ebert
G W Bechler	E C Bronner	R M Clasmeyer	W P Debele	R W Egan
J R Becker	K F Brooks	A M Clement	W J Decker	H H Eggers
W P Bedgar	L H Brown	M D Clure	L R Derousse	A E Elliott
L S Berdahl	W S Brown	F M Conover	D De Salvo	E M Ellis
M I Bergstrom	W J Bryan	A H Corwin	D C Detmers	J R Elvrom

SUSTAINED SUPERIOR PERFORMANCE AWARDS (continued)

K J Erdman	H W Hinton	R Marinsky	R Passey	D L Stimson
D B Evans	R B Hodges	W A Massey	T C Paun	R J Stockton
T J Fackler	W A Holdren	D D Maxfield	M W Paxman	J V Strang
H R Federwisch	M E Hollinger	H M Maxwell	R Pearlman	H A Suffron
G P Ferrara	B J Hughes	R B Mayo	A B Perry	J F Swartz, Jr
R A Fife	C R Hunter	K M Mays	R W Perry	M A Tatum
J J Fink, Jr	D L Irons	G E McCarthy	R E Pierce	K A Taylor
W Forbis, Jr	N Ito	D S McCulloch	J Piet	K O Taylor
M R Frampton	G D Jacobson	J G McDonnell	S L Pittman	J F Terranova
B L Freiman	F G Jennings	V E McDougall	H W Pohl	G D Thompson, Jr
M L Fullmer	M J Jess	J H McGhee	K L Preli	R L Tiede
L G Garrett	E Johnson	M McMinds	C V Preston	D Tom
G S Gillam	I D Johnson	G D McNew	H L Pytel	W J Tommila
G R Glassburner	I R Jones	T N Melland	C A Radloff	W L Traglio
T D Goodlin	R W Jordan	R W Means	M L Ralls	R K Tsuda
S P Goodman	Z V Joyce	M L Meredove	A W Ramsey	G L Turner
G E Goranson	R M Kapell	D F Meredith	S Randler	W W Turner
R W Gordon	W H Keeler	C E Miller	W V Reavely	G V Tyler
A J Gould	F J Kelley	R R Miller	A C Richmond	L Tysdal
C M Grace	D L Kelsey	T L Miller	E M Ridenour	J W Van De Riet
M E Grace	M I Kennedy	H F Minchow	A P Rigby	V L Van Elsberg
R Grandstaff	D Kidman, Jr	W W Mishak	H J Robertson	S Vander Naalt
W L Granston	V King	J A Morris	W H Robinson	E J Volkomenor
F F Gray	C G Knight	R L Morris	W E Roderick	E L Van Vorst
H S Greenleaf	R B Kobs	L E Morton	M J Rolle	M R Walbrecht
R J Greisen	L K Koizumi	J D Mungall	P D Ronnie	W W Walker
F L Guethle	K K Kuroda	A J Munsenreder	D E Rudd, Jr	L A Wallace
H M Hackett	T C Kuter, Jr	J H Murdoch	G C Sanders	L E Waterhouse
R L Hale	R W Labelle	M Nakashian	G Saucier	C L Watts
W P Haley	J J Lach	B Nanyon	C W Schilling	I W Welch
A S Hall, Jr	D H Lake	K H Nass	T L Schlesinger	E A Wescott
S Halsey	M S Lang	E L Nelson	E S Schmidt	J B Whalen
G E Hammond	F Lankford	K C Nelson	E P Schultz	G B Whitehead
J E Hansen	N J Larsen	D Newton	J F Schultz, Jr	V A Whitely
K E Harkema	E Larson	M H Nichols	D J Seitz	D L Wilcox
J E Harris	D R Laycock	I P Nicholson	H S Sellers	R H Wiley'
J W Hart	D L Lee	R L Northam	J J Shields	W J Wilkinson
D J Haugen	B B Lemley	C N Ober	H Shillington	B M Williams
B C Heidvogel	A N Lenhart	N M O'Connor	D L Smith	C E Williams
H D Heister	M A Lindauer	J W Oliver	J C Smith	R R Williamson
R C Hendricks	H E Little	M C Opray	J W Smith	D S Willis
C C Hengl	I C Loesche	P F O'Sullivan	L E Smith	M E Winkler
F J Herman	D E Long	W M Owen	R B Smith	R E Wiseman
D J Hermeling	A V Lott	N A Owens	L D Snowden	E H Wolfe
J E Hesla	J E Lundgren	W C Palmer	G L Spahn	R J Wood
C D Hewes	E J Lusinski	N P Papson	R C Spears	J A Wright
W S Higgs	B D Mac Gillivray	F L Parke	K L Spencer	J M Wynne
R Hinrichs	H G Maier	H A Parker	C E Stafford	S A Younghein
	G L Malone	E Parks	E S Sterling	

The following received a Group Sustained Superior Performance Award

F P Cleary	L L Gannis	B L MacDonald	S L McElroy	C M Zatoka
	M Gregg		W T Sullivan	

\* \* \* \* \*

Pictures on the following pages are identified from left to right. Names are immediately followed by an "O" for employees who have received an Outstanding Rating in conjunction with an SSP --- or identified by an "S" for Independent Sustained Superior Performance Awards. Many pictures also include supervisors and fellow employees.



OFFICE OF THE ASSISTANT ADMINISTRATOR. Kathleen L Winters-O, E C Marsh - Deputy Assistant Administrator, Carole Flynn-O, J H Tippetts - Assistant Administrator, Sarah Scally-O.



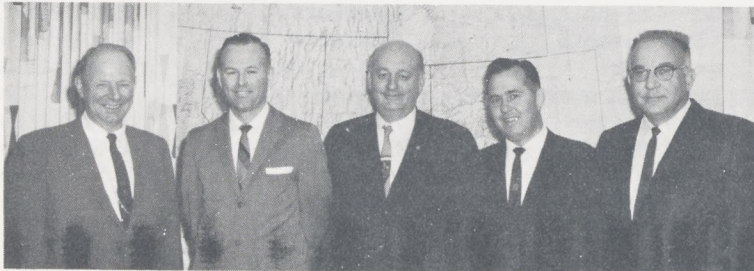
PERSONNEL DIVISION. Gertrude Tyler-S, W I Barry-S, Helen G Swift-O.



LEGAL DIVISION. Ethel Sterling-O, Penelope D Ronnie-S, Agatha D Devine-O, Doris L Smith-S.



BUDGET DIVISION. J H Tippetts Assistant Administrator, E P Simonds-O.



OFFICE OF THE ASSISTANT ADMINISTRATOR. A E Horning, independent "O" rating, J V Nielsen-O, J H Tippetts - Assistant Administrator, J J Keyser-O, E S Kropf, independent "O" rating.



ADMINISTRATIVE SERVICES DIVISION. Florence L Smith, Zelta F Mack-O.



PERSONNEL DIVISION. Seated: Bernice L MacDonald-S, Mildred Gregg-S, Lydia L Gannis-S, Cecilia M Zatoka-S. Standing: S L McElroy-S, W T Sullivan-S, F P Cleary-S, G M Riley.



ACCOUNTING DIVISION. Alice Gaspar-O, C A Olson -- Letters of Commendation -- Maxine Libby, Dolores E Kutz, Shirley White, J H Tippets - Assistant Administrator, Nancy Y Ito-S, Eleanor S Hilliard-O, T Anselmo, Marietta W Nakashian-S, F D'Huyvetter.



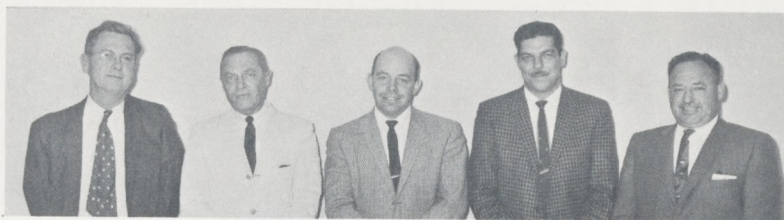
AIR TRAFFIC DIVISION. W M Flener-O, F P Schriver-O, J A Garrison-O, L Ponton de Arce, W A Stephens-O, R E Wiley-O, L L Hink-O, C T Trahan-O, F S McKnight-O, D E Pearson-O, G L Simonson-O, M W Claar-O.



AIR TRAFFIC DIVISION. M Claar-O, Mildred R Freeman-O, Juanita F Cannon-O, June C Harris-O, Trudi Page-O, L Ponton de Arce.



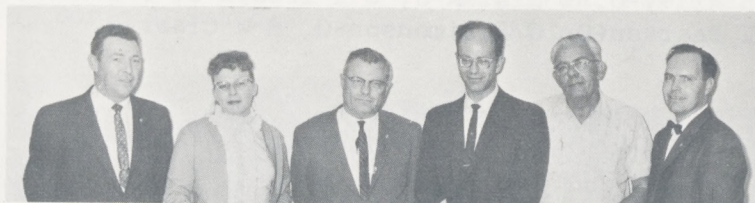
AIR TRAFFIC DIVISION. D C Detmers-S, L H Brown-S, Virginia R Dolim-S, H A Suffron-S, L Ponton de Arce, D J Haugen-S, Joyce E Lundgren-S, D R Newton-S, B L Freiman-S.



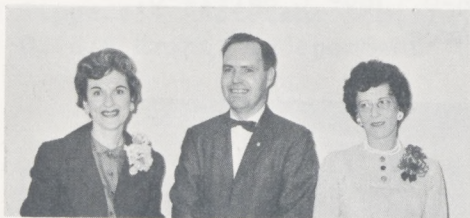
AVIATION FACILITIES DIVISION. C B Kohli, C C Stenne, J J Baranway-S, M Walbrecht-S, E G Bowlby-S.



AVIATION FACILITIES DIVISION. C B Kohli, E G Bowlby-S, W H Sermon-O, P M Potter-O, Diane Christensen-O, J L Bispo-O, C S Gerard-O.



AVIATION FACILITIES DIVISION. J W Tunis, Ruth M Kapell-S, H A Smith, C R Dickow-S, J W Day-S, J R Reed.



AVIATION FACILITIES DIVISION. Beverly Delancy-O, J R Reed, Dorothy P Kunellis-O.



AVIATION FACILITIES DIVISION. C G Grosh, Freddie L Orr-O.



AVIATION FACILITIES DIVISION.  
 J G Melville, Helen Walker-O,  
 R F Cook-O, Julia Larson-O,  
 Clarissa Gordon-O.

AVIATION FACILITIES  
 DIVISION. C B Kohli,  
 Francesca A Frampton-O,  
 R A Blattner.



AVIATION FACILITIES DIVISION. J W Smith-S,  
 W Wilkinson-S, W Debele-S, Lillian Pittman-S,  
 H Eggers-S, Velda King-S, W Holdren-S, Ethel  
 Johnson-S, K Nass-S, A Gould-S, J G Melville.



AVIATION FACILITIES DIVISION. W S Hardee, D J  
 Seitz-S, K W Reynolds-O, Marguerite L. Murillo-O,  
 G C Sanders-S, Lillian D Snowden-S, F R Buckholtz-  
 S, Nellee P Papson-S, J P Byrne-S, Rose Marinsky-S,  
 L H Beckfeld-O, Helen L Pytel-S, R C D'Urso-S,  
 Zita V Joyce-S, T L Schlesinger-S, G B Whitehead-S,  
 F G Jennings-S.



FLIGHT STANDARDS DIVISION.  
Leila Cysewski-S, R C Boone.



FLIGHT STANDARDS DIVISION.  
Gloria Saucier-S,  
J Campbell.



FLIGHT STANDARDS DIVISION.  
F S Cardone-O, Kathleen A  
King-O, Mabel K Fox-O,  
Bernice Seat-O, C H Jacobson-O,  
R E Peterson-O.

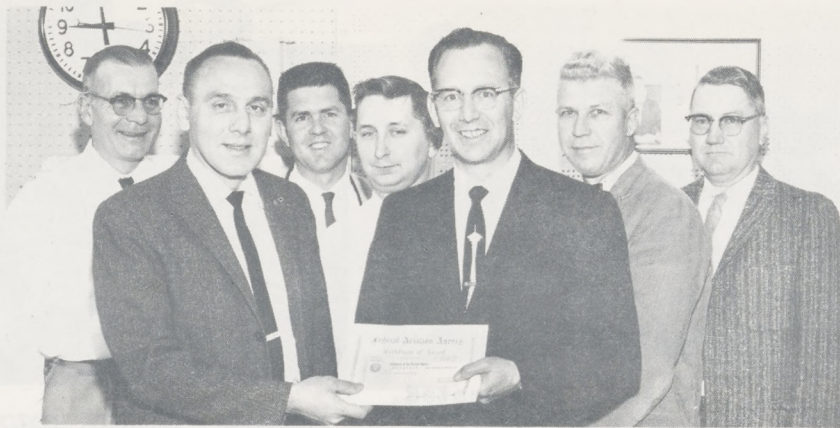
FLIGHT STANDARDS DIVISION.  
D R Laycock-S, Harriet  
Shillington-S, J M Bugbee-S,  
J W Hart-S.



FLIGHT STANDARDS  
DIVISION. C R Hawks-O.



AIRPORTS DIVISION. F J Wild, R J  
Stockton-S, C J Winger, H M Maxwell-S,  
D L Barton, C S Benson.



BAKER, OREGON. FSS. H V Renz, H Gabriel, R K Woodard,  
T A Regerrah, R Grandstaff-S, J D Newbern, K M Mercer



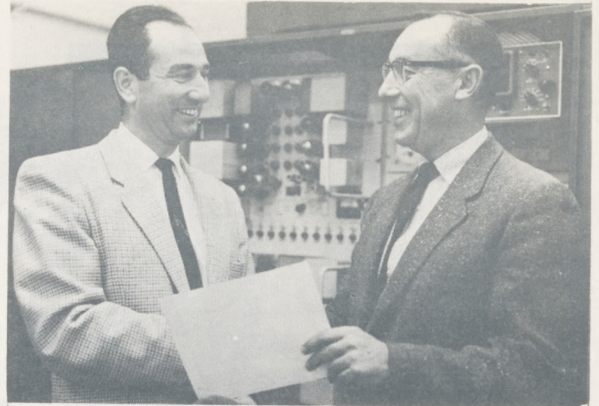
BAKERSFIELD, CALIF. SMS. G Gillam-S, F Wasley,  
Joyce Milton-S, L Nester, J Hammond, W Moritz,  
H Carter, E Schmidt-S, D Kimball, S Washington.



BOISE, IDAHO. GADO, SMDO, SMS, Tower; Awards Group  
also Representing BURLEY SMS; DUBOIS SMS, MOUNTAIN  
HOME AFB ATS and BAKER, OREGON SMS. Seated, Shirley  
Fritchhoff- Employee Suggestion, Joan Harris-O,  
W W Lottridge-O, W E Roderick-S, J H Murdock-S,  
Delphine Aldecoa-S. Standing, R A Munkres-O, J E Harris-S,  
K S Wuthrich-O, L E Carpenter-O, R S Davis-S,  
R W Perry-O, C H Butler-O.



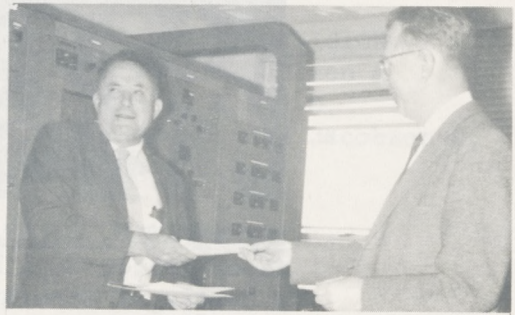
BURBANK, CALIF. TOWER. L A Songstad,  
Jeanette L Markie-O, E P Schultz-S,  
C C Hengl-S.



BURBANK, CALIF. SMS. J F Terranova-  
S, J L Shaw.



CASPER, WYO. TOWER H S Sellers-S,  
R L Markwith.



COLORADO SPRINGS, COLO. SMS.  
R Fife-S, W F Smith, Jr.



CHEYENNE, WYO. CS/T. H J Robertson-S,  
L J Ebert-S.



DAGGETT, CALIF. FSS.  
W H Atkins-O, R E Davies-S.



DENVER, COLO. STN. R M Hacker,  
V D Pattison-O.



DENVER, COLO. ACDO. Pauline  
Cheplen-O, Marie Finn-O.



DENVER, COLO. ACDO. H T Kimbell, Jr.  
Marie Finn.

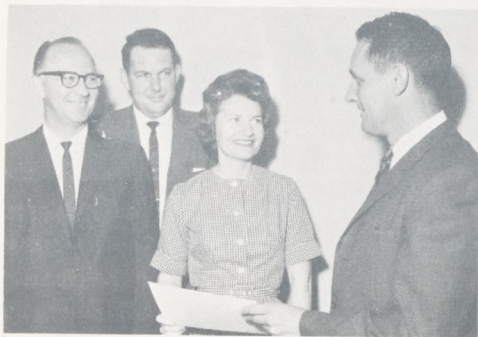
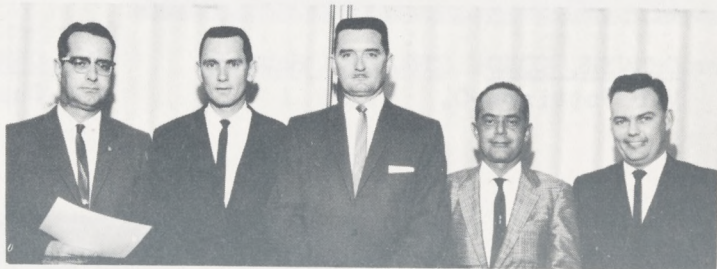


DENVER, COLO. TOWER. T Collins-O, F L Lankford-S,  
Jane V Strang-S, J A Lundstrom-O, M P Yanney-O,  
W S Brown-S, E H Lee-O.



DOUGLAS, WYO. SMS. L F Farrar-O,  
L H Klahn.

EDWARDS, CALIF. RAPCON.  
ATS, SMS. J C Graves-O,  
R T Cox-S, J F Swartz-S,  
K F Brooks-S, W W Walker-S.



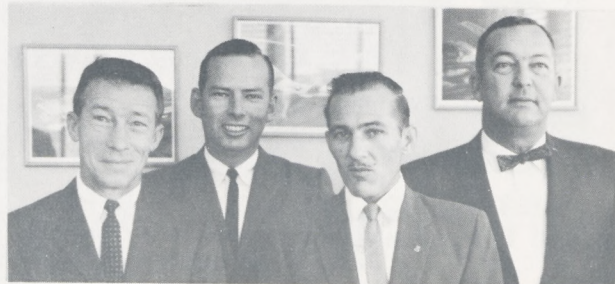
EL TORO, CALIF. RATCC.  
A R King-O, T D Goodlin-S,  
Rachel H Bell-O, E M Parks-S.



EL TORO, CALIF. SMS. R R Pearson-O,  
B J James.



FRESNO, CALIF. SMS. L W Bowen-S,  
Twila L Parli-O, J L Anderson-O,  
R A Stegall-O.



FRESNO CALIF. TOWER. A Wallace-S,  
A Perry-S, J B Whalen-S, B Berryhill-S.



FRESNO, CALIF.  
SMDO. MILLIE TATUM-S.



GREAT FALLS, MONT. SMDO. 1st row:  
E M Ellis-S, Margaret Dean-O, Ann Balko-S,  
R Miller-S, W M Flener. 2nd row: L R De-  
Rousse-S, F J Kelley-S, D V Evans-S,  
R W Jordan-S, F M Conover-S, R L Olson-O,  
T C Paun-S, C D Hewes-S, A Corwin-S,  
G Kittelson-O, L C Allen-S.



IDAHO FALLS, IDAHO. FSS.  
C W Wheeler, M L Fuller-S.



LAS VEGAS, NEV. SMDO.  
W W Turner-S, E L Combs.



LAS VEGAS, NEV. SMDO. Mahdeena H  
McFarlane-O, E L Combs.



LEMOORE, CALIF. RATCC.  
G W Martin-O, D E Abshire-S,  
A E Andrews-O.



LONG BEACH, CALIF. TOWER.  
S W Dilatush, E L Nelson-S,  
T C Kuter, Jr.-S, N A Owens-S.



LONGMONT, COLO. Denver ARTCC. 1st  
row; Doris J Hermeling-S, Joyce M  
Wynne-S, Maybelle I Bergstrom-S,  
2nd row: C R Hunter, Sr-S, D L Lee-S,  
C A Radloff-S, D F Backman-S, S A  
Younghein-S, J H McGhee-S.



LOS ANGELES, CALIF. TOWER, FSS. Seated: R L Tiede-S,  
A B Bush-S, R Timmerhoff-O, Janet M Duckworth-S, K M  
Mays-S, G M McSherry, Asst. General Manager, Dept. of  
Airports, Los Angeles, R B Smith-S, W G Schossow-O,  
M H Nichols-S. Standing: J H Wray-O, L E Morton-S,  
G H Bogan-S, L D Mitchell, Jr.-O, P F O'Sullivan-S,  
E G Brink-S, H D Heister-S.



LOS ANGELES, CALIF.. SMS.  
 N A Davis-O, C L Watts-S,  
 J Hesla-S, Grace Davies-O,  
 R D Anderson-S, R K Tsuda-S,  
 C Broughton-O, S Randler-S,  
 R R Simpson-O.



MC CHORD, CALIF. RAPCON. W J Lehto-  
 O, D L Stimson-S, E A Wescott-S,  
 E C Crow.



MEDFORD, OREGON. SMS. R B Las-  
 niewski-O, R J Hayton-O, O J  
 Rasmussen, W J Tucker-O,  
 L D Vertner-O.



MARCH AFB, CALIF. RAPCON, ATS, SMS. C L Hamilton-O, H M  
 Hackett-S, R L Hale-S, G D Thompson-S, G L Turner-S, W J  
 Bryan-S, T L Miller-S, J J Lach-S, T G Culver-S, M E Holl-  
 inger-S, W W Mishak-S.



NEVADA Awards Group and Supervisors - representing CARSON CITY ADO, ELKO SMS, LOVELOCK SMS, RENO CS/T, GADO, SMDO, SMS. Front row: R C Rhodes-O, J Dallas, W R Chambers, Helen Kitchin, F C Saunders, Marie Hunt-O, J L Applebury-O, R V Nielson, E S Gull. 2nd row: C F Herrold, Dorothy Earnshaw-O, D Frost, J L Connors, A J Munsen-reder-O, D P McPherson, E G Johnson-O, H C Stokely, D Jordon.



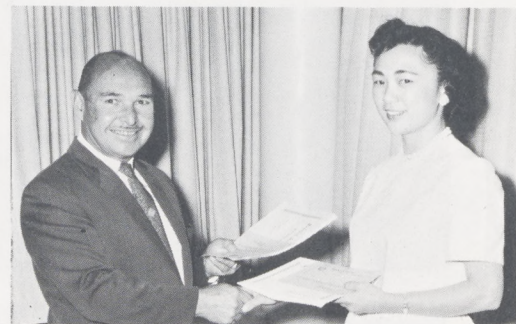
NORTH BEND, ORE. SMS.  
D L Fraley-O, W L Stillmaker-O.



OAKLAND, CALIF. FSS. J C Hill-O, G L Simonson.



OAKLAND, CALIF. ATAS. Ruby J Masucci-O, G L Simonson-O.



OAKLAND, CALIF. DAO. C E Drysdale-S, Loretta Koizumi-S.



OAKLAND, CALIF. SMDO, SMS. R Hinrichs-S,  
Irma Johnson-S, Shirley Sell-O, D Tom-S,  
H E Bertuleit.



OAKLAND, CALIF. CENTER, 1st row: Margaret E Stewart-O, D F Meredith-S,  
M D Clure-S, Hazel M Aleshire-S, W J Davis-S, R W Egan-S. 2nd row:  
S K Knight-S, H E Little-S, J Sangiuliano-O, J M Dillon-S, R E Kirby-O.  
3rd row: W V Reavely-S, G L Spahn-S, G E Goranson-S, V E McDougall-S,  
R C Hendricks-S, H G Maier-S, G S Baldwin-O, C Duprel-S.



OLYMPIA, WASH. SMS.  
L P Renaud-O, W C  
Atkins.



OXNARD, CALIF. SMS. N J  
Larsen-S.



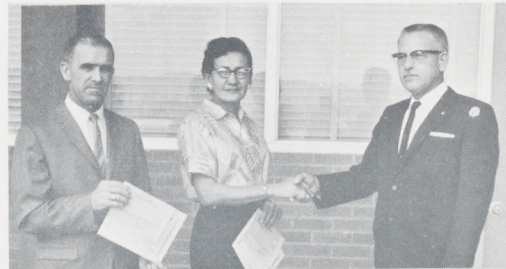
PASO ROBLES, CALIF. SMS.  
 E Van Vorst-S, R Morris-S,  
 W C Eastwood-S.



PALMDALE, CALIF. TOWER, SMS.  
 M Henkel, F L Guethle-S,  
 J Cheatham-S, J DeFriend.



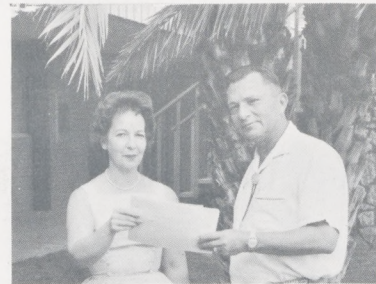
PHOENIX, ARIZ. ATAS.  
 R W Farris, Enid T  
 Hopkins-O.



PHOENIX, ARIZ. STATION.  
 Vander Naalt-S, Nellie M  
 O'Connor-S, C R McGowan.



PHOENIX, ARIZ. DAO. J Lovercio-O,  
 Lucille Guinn-O, E H Scofield.



PHOENIX, ARIZ. GADO.  
 Audrey E. Elliott-S,  
 G E South.



PHOENIX, ARIZ. CENTER. F J Herman-S,  
L G Garrett-S, I C Loesche-S, D E Rudd, Jr.-S,  
Marie Kennedy-S, W J Decker-S, H W Pohl-S,  
C W Schilling-S, T N Melland-S, A C Richmond-S,  
J A Morris-S C E Williams-S, G R Glassburner-S.



PORTLAND, ORE. TOWER. 1st row, W M Owen-S,  
W P Haley-S, W C Palmer-S, Mary C Opray-S,  
C L Thompson. 2nd row: K L Spencer-S, R E  
Pierce-S, W Forbis, Jr.-S, J G McDonnell-S,  
W L Traglio-S, G D Dicey-S.



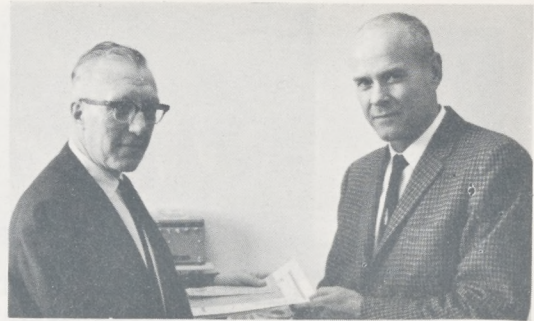
PORTLAND, ORE. SMDO.  
R E Wiseman-S,  
C C Barrett.



PORTLAND, ORE. SMDO, SMS. L G DeMerritt-O,  
J S Nichols-O, D L Jones-O, G D Jacobson-S,  
L S Berdahl-S, R J Greisen-S, Shirley R  
Andrews-O.



PORTLAND, ORE. FSS.  
L S Yates, Jr., A W  
Ramsey-S.



PORTLAND, ORE. FSS. L S Yates,  
Jr., R A Woodford-O.



RED BLUFF, CALIF. FSS.  
R.A McHugh-S, E E Johnson.



SACRAMENTO, CALIF. SMDO, SMS, MATHER RAPCON.  
B D Koven-O, G E McCarthy-S, J E Hansen-S,  
K S Imsdahl, Louise Smith-O, A D Parker,  
D S McCulloch-S, H E Bertuleit, D G Carroll-S



SALT LAKE CITY, AND OGDEN, UTAH. ARTCC, FSS, ATAS, TOWER, SMDO, SMS. Seated:  
S Goodman-S, A Hall-S, Georgia Simmons-O, Mary McMinds-S, Carol Watts-O,  
R Boman-S, F Parke-S. Standing: H Greenleaf-S, L Drexel-O, R Alvey-S,  
M Menlove-S, A Rigby-S, M Paxman-S, D Hodges-S, E Lusienski-S, B Robinson-S,  
R Passey-S, S Halsey-S, D Willis-S, B Spears-S, K Nelson-S, J Van de Riet-S,  
O Bingham-S, R B Mayo-S, W Teuscher-O.



SAN FRANCISCO, CALIF. TOWER, ATAS. E P Sullivan,  
Rose Mary Altmeyer-O, J M Coppinger-O, N E Merkel-O,  
G R Weeks-O, R O Proett, G L Simonson.



SAN FRANCISCO, CALIF. TOWER, ATAS. E P Sullivan,  
L T Blowers-S, R L Northam-S, C E Stafford-S,  
J E Chalker-S, R O Proett, G L Simonson.



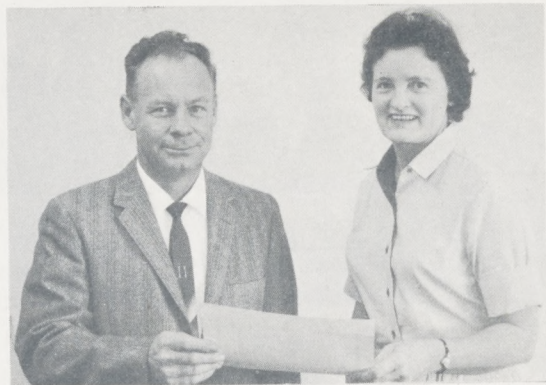
SAN FRANCISCO, CALIF. SMDO.  
Seated: Lillian Waterhouse-S,  
Mildred Arnold-S. Standing:  
W A Cullers-S, M C Nickerson-S,  
A N Lenhart-S, D L Irons-S,  
R Bishop-S, J P Johnson, M A  
Covil-S, G Simonson.

SAN FRANCISCO, CALIF. FSS,  
ATAS. J W Mason (accepting  
"O" rating for T F Dowling),  
Barbara J Hughes-S, G L  
Simonson.

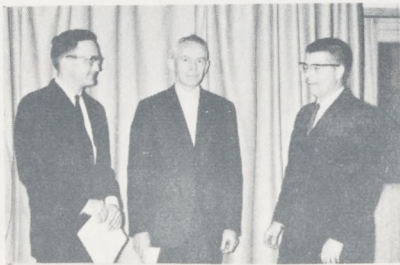




SANTA ANA, CALIF. TOWER.  
I R Jones-S, H W Hinton-S.



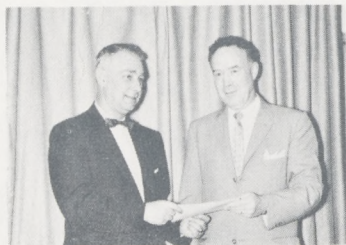
SANTA MONICA, CALIF. SMS.  
G Eckholdt, Ruth Clasmeyer-S.



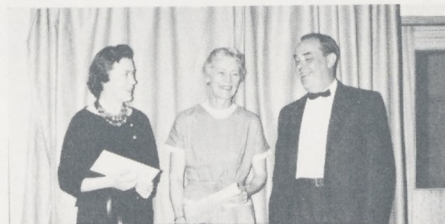
SEATTLE, WASH. SMS.  
H E Seabrook-O, G C  
Hawkinson-Letter of  
Commendation, H E Minchow.



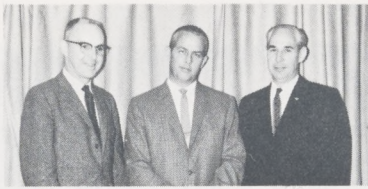
SEATTLE, WASH. GADO.  
I Wilma Welch-S,  
J J Princen,  
Betty M Williams-S.



SEATTLE, WASH. GADO.  
E Perlis-O, J J  
Princen.



SEATTLE, WASH. ATAS, ADO.  
Betty Carmichael-S, Miriam  
Ralls-S, R T Puckey.



SEATTLE, WASH. TOWER.  
R W Means-S, J R  
Elvrom-S, K R Grant.



SEATTLE, WASH. TOWER.  
R H Wiley-S, J W Oliver,  
Jr.-S, K R Grant.



SEATTLE, WASH. FSS. B C Swaffield,  
Grace P Lunstad-O, E L Jones-O.



SEATTLE, WASH. SMDO. Seated:  
Kathryn O Taylor-S, E C Bronner-S.  
2nd row: H E Minchow-S,  
G L Malone-S, R W Gordon-S,  
R M Wood.

SEATTLE, WASH. EMDO.  
H A Parker-S, K J Erdman-S,  
V L Gardner.

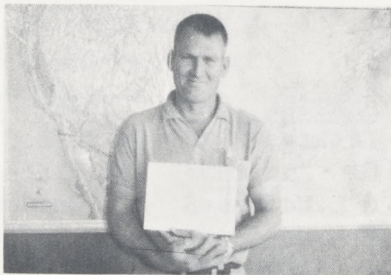




SEATTLE, WASH. ARTCC. Seated:  
 C V Preston-S, Dorothy L Wilcox-S,  
 W J Tommila-S, T J Fackler-S.  
2nd row: G W Bechler-S, A D  
 DuRoss-S, D H Lake-S, G P Lawing-S,  
 W F Zauche, Jr.



SPOKANE, WASH. ARTCC, RAPCON, SMS, GADO. Matilda D Henry-O,  
 L L Craig-S, Delores F Sardam-O, R B Kobs-S, Marjorie E  
 Winkler-S, W L Granston-S.



SHERIDAN, WYOMING. SMS.  
 R R Leibert-O.

SHERIDAN, WYOMING. FSS.  
 M E Taylor-S, D E Downing.



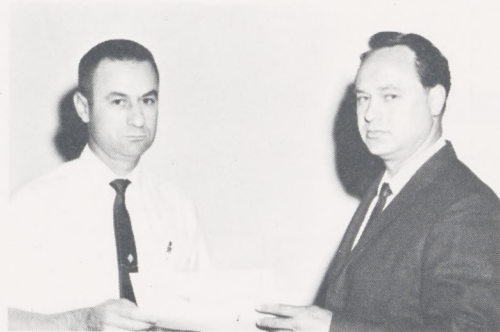


STOCKTON, CALIF. FSS. N Ober-S,  
L Kulisek.

TUCSON, ARIZ. RAPCON/TOWER,  
FSS. C M Grace-S, R B  
Talbot-O, D P Hutchins-O,  
A V Lott-S, R R Williamson-S,  
B E Heath.



VAN NUYS, CALIF. GADO.  
G J Schwab-O, Mildred Dalton-  
S. C Sargent.



WORLAND, WYO. FSS.  
H O Binkley-S, H J Dalton.