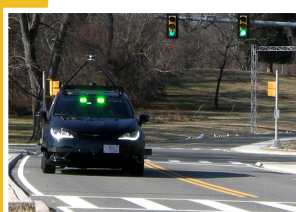
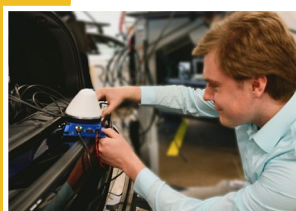
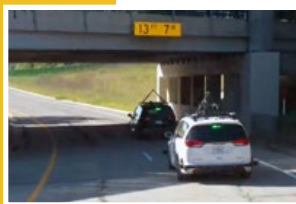


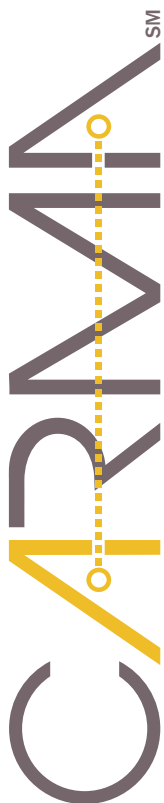
COOPERATIVE DRIVING AUTOMATION



All Photos: FHWA

Experience All That CARMA_{SM} Has to Offer

Collaborate with the Federal Highway Administration (FHWA) Office of Safety and Operations Research and Development (HRSO) and help create a safer and more efficient transportation system.



U.S. Department of Transportation
Federal Highway Administration



Computer/Control Equipment

- AStuff Spectra PC with nVidia RTX 2080 graphics processing unit (GPU) running Ubuntu® version 20.04.
- Crystal™ Rugged RS252S13 2U server for onboard data storage.
- NovAtel PwrPak7D™ global navigation satellite system (GNSS) with IMU-IGM-S1 inertial measurement unit (IMU).
- **SoundOff Signal nForce®** light bars mounted in the front and rear windows flash a variety of patterns to indicate status of the vehicle or control system to external observers.

Drive-by-Wire Controllers

- **AStuff PACMod** drive-by-wire controller. *(Blue and Silver Lexus RX 450h)*
- **Dataspeed** drive-by-wire controller. *(Ford Fusion)*
- **New Eagle** drive-by-wire controller. *(Black and White Chrysler Pacifica)*

Communications Equipment

- **Cohda MK5** onboard unit (OBU) for Dedicated Short Range Communications (DSRC).
- **Cradlepoint COR IBR900** mobile router for Wi-Fi and 4G long-term evolution (LTE) connectivity.
- Pending Addition: **Cellular vehicle-to-everything** OBU.

Sensors

- Two **Allied Vision Mako G-319C** cameras with Mobileye® camera development kit.
- Four **Aptiv SRR2** (formerly Delphi) radars, each mounted on a different corner of the vehicle.
- One **Aptiv ESR 2.5** (formerly Delphi) for forward-looking midrange, and long-range detection in the front.
- **Ergoneers Vehicle Testing Kit.** *(Silver Lexus RX 450h)*
- **Mobileye® 630** camera development kit.
- **Velodyne Ultra Puck™ VLP-32C** for localization and object detection.





DRIVERS

Follow these links to access CARMA-compatible drivers for the listed hardware:

Allied Vision Mako G-319C



[[GitHub](#)]

Aptiv (formerly Delphi) SRR2



[[GitHub](#)]

Mobileye 630



[[GitHub](#)]

NovAtel PwrPak7D



[[GitHub](#)]

Velodyne Ultra Puck VLP



[[GitHub](#)]

Aptiv (formerly Delphi) ESR 2.5



[[GitHub](#)]

AStuff PACMOD



[[GitHub](#)]

New Eagle



[[GitHub](#)]

SoundOff Signal nForce



[[GitHub](#)]



CARMA_{SM} VEHICLE SPECIFICATIONS

Lexus RX 450h - Blue



Lexus RX 450h - Silver



Chrysler Pacifica - Black



Ford Fusion



Chrysler Pacifica - White



All Photos: FHWA

The U.S. Government does not endorse products or manufacturers. Trademarks or manufacturers' names appear in this presentation only because they are considered essential to the objective of the presentation. They are included for informational purposes only and are not intended to reflect a preference, approval, or endorsement of any one product or entity.



U.S. Department of Transportation
Federal Highway Administration

<https://doi.org/10.21949/1521936>
FHWA-HRT-22-103
HR50-40