



# Southwest Seventh

## DEPARTMENT OF TRANSPORTATION HEADQUARTERS BUILDINGS

No. 66

November 15, 1972



### A NEW DOT BUILDING - BUZZARD POINT

DOT has developed plans for additional space in the southwest employment area. A commercial building near completion on Buzzard Point (2nd and "V" Streets, S. W.) is being assigned to DOT by GSA. It has been determined that each administration will be apportioned space in the Buzzard Point Building to alleviate current crowded conditions and for the expansion of new or growing programs. Although all final decisions have not yet been reached, the Office of Administrative Operations has proceeded with the detailed planning essential to the provision of suitable facilities for DOT employees and programs. It is currently estimated that the building will be ready for occupancy early in 1973.

The building has ten floors, two of which are underground parking levels; a street level which will house offices other than DOT; a second-story parking level; and then six floors of office space. A picture of the artist's concept of the finished building and a typical floor layout are shown below.

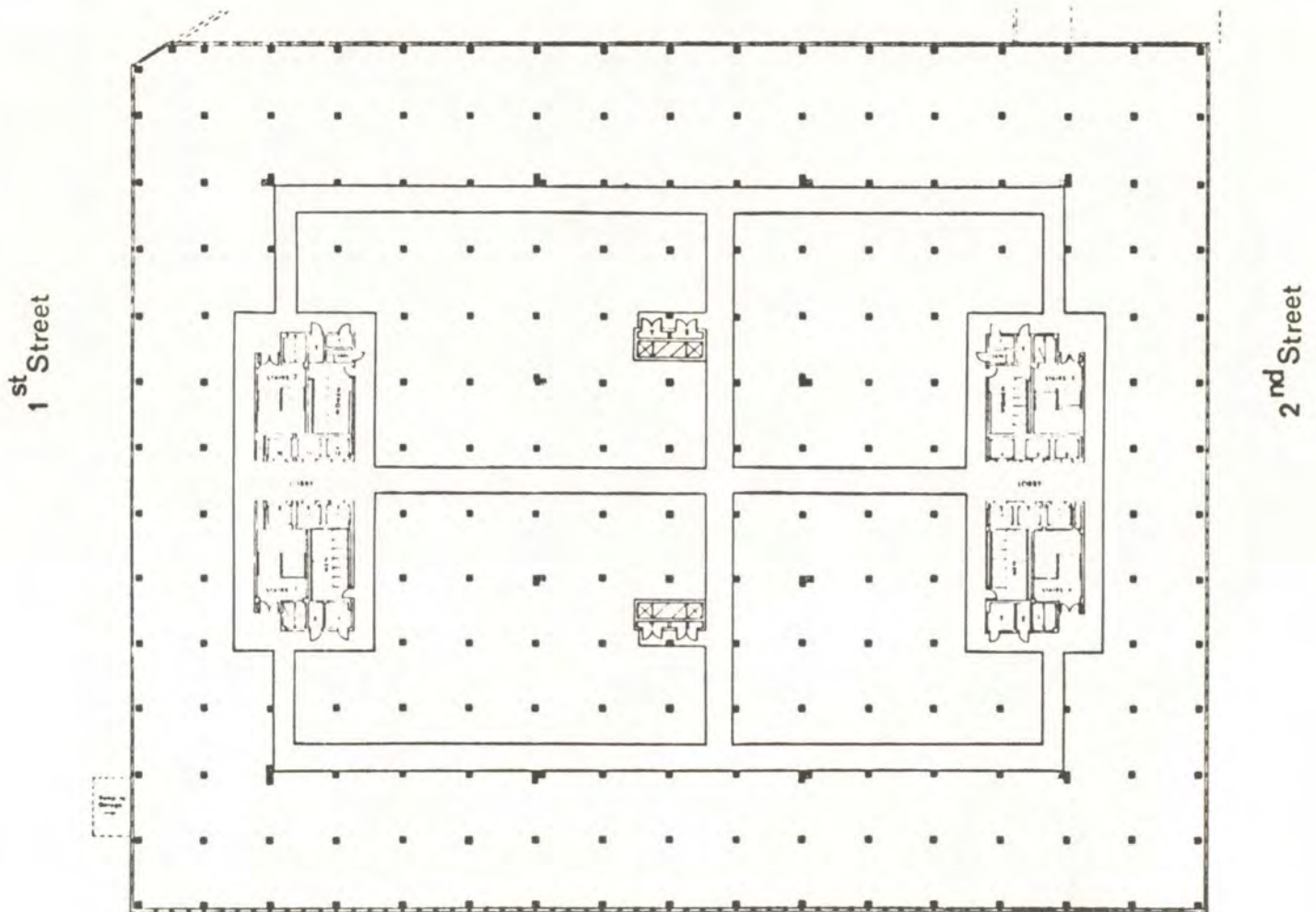
There is at present public transportation within one block of the building via bus routes 70 and 74. Efforts will be made to have these lines extended to the Buzzard Point Building when we have a firm occupancy date. There will also be a DOT shuttle bus service between the DOT buildings and the schedule will be published when plans are firmer.





Artist's rendition of completed Buzzard Point Building (2100 Second St., S.W.)

Many questions have been asked concerning various facets of this proposed DOT space acquisition. As planning proceeds and answers become available, we will keep you informed.



Typical floor layout showing main corridors and elevator / rest room / stairwell cores at either end of building.



