

Jan 1st 1950
2,215

TRAFFIC VOLUME TRENDS

Washington, D. C.

September 1949

On the basis of preliminary figures, motor-vehicle travel on main and local roads for the country as a whole was higher during September 1949 than in any previous September.

	Vehicle-miles (millions)	Percentage change from—		
		1941	1943	1948
Main rural roads.....	15,405	+ 34.9	+127.0	+ 7.8
Local rural roads.....	5,173	+ 17.0	+84.0	+ 6.5
All rural roads.....	20,578	+29.9	+114.4	+ 7.4

Traffic on rural roads in the geographic regions and changes from previous years were as follows:

	Vehicle-miles (millions)	Percentage change from—		
		1941	1943	1948
Eastern regions.....	6,260	+ 13.7	+106.6	+ 6.0
Central regions.....	10,544	+33.7	+118.8	+ 7.0
Western regions.....	3,774	+54.0	+115.7	+11.2

Travel on city streets was also heavier than in any previous September. Comparisons with September of previous years for city streets, rural roads, and all roads and streets are as follows:

	Percentage change from—		
	1941	1943	1948
City streets.....	+ 23.5	+ 81.6	+ 5.5
Rural roads.....	+29.9	+114.4	+ 7.4
All roads and streets.....	+26.8	+ 97.7	+ 6.5

H. S. Fairbank, Deputy Commissioner
Bureau of Public Roads

Attachments

-70400

(1)

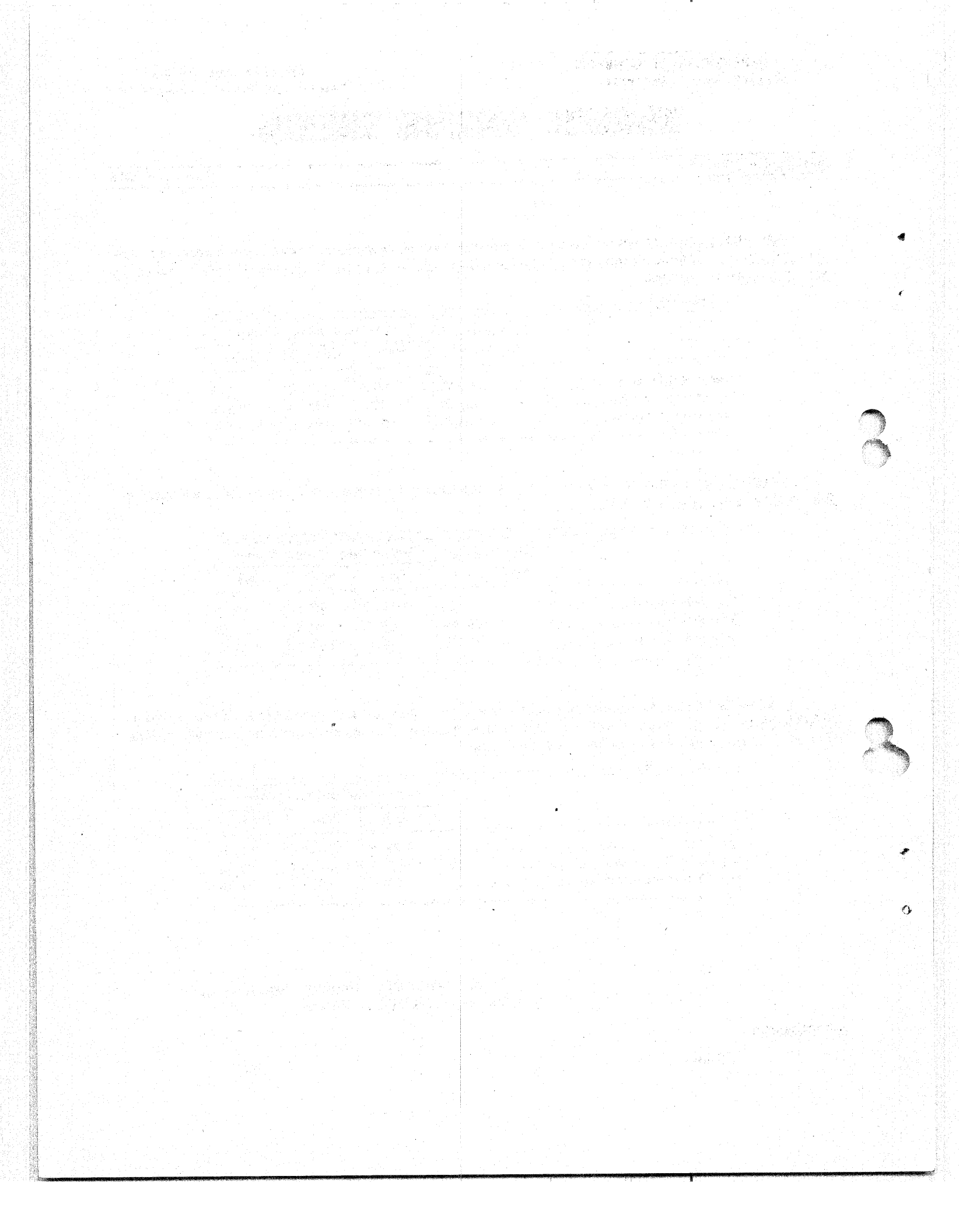


Table 1.—PRELIMINARY SUMMARY OF AUTOMATIC TRAFFIC RECORDER DATA FOR SEPTEMBER 1949 INCLUDING 616 STATIONS IN 44 STATES

Type of highway and State	Number of stations	Traffic volume percentage change from September 1948	Type of highway and State	Number of stations	Traffic volume percentage change from September 1948
<i>STATE HIGHWAYS</i>			<i>STATE HIGHWAYS—Con.</i>		
Alabama.....	7	+5.1	Texas.....	85	+10.9
Arizona.....	5	0.0	Utah.....	12	+7.4
Arkansas.....	18	+15.9	Vermont.....	6	-6.0
California.....	6	+8.6	Virginia.....	2	+12.8
Colorado.....	10	+30.0	Washington.....	10	+8.9
Connecticut.....	17	+7.4	West Virginia.....	11	+0.6
Delaware.....	4	+11.2	Wisconsin.....	7	+1.0
Florida.....	Wyoming.....	5	-1.2
Georgia.....	7	+6.7			
Idaho.....	8	+14.9	<i>TOTAL—44 STATES.....</i>	<i>592</i>	<i>+7.8</i>
Illinois.....	4	+15.9			
Indiana.....	21	+7.9	<i>LOCAL HIGHWAYS</i>		
Iowa.....	Alabama.....	2	+11.5
Kansas.....	12	-4.1	Connecticut.....	3	-7.3
Kentucky.....	13	+5.7	Delaware.....
Louisiana.....	16	+15.7	Georgia.....	3	+2.9
Maine.....	12	-1.8	Indiana.....	1	+8.3
Maryland.....	17	+7.4	Iowa.....
Massachusetts.....	8	+2.6	Maryland.....	1	+18.7
Michigan.....	26	+2.6	Michigan.....	2	-1.9
Minnesota.....	24	+5.7	Missouri.....	2	+15.4
Mississippi.....	10	+11.0	Montana.....	2	+27.0
Missouri.....	25	+13.3	Nebraska.....	1	-2.3
Montana.....	11	+8.2	North Dakota.....	2	+11.9
Nebraska.....	11	+8.0	Ohio.....	2	-3.5
Nevada.....	16	+9.2	Oregon.....	1	+3.5
New Hampshire.....	15	+1.6	Rhode Island.....	1	+4.3
New Jersey.....	4	+7.5	Tennessee.....
New Mexico.....	15	+5.4	Wisconsin.....	1	-5.1
New York.....			
North Carolina.....	20	+9.3	<i>TOTAL—14 STATES.....</i>	<i>24</i>	<i>+6.5</i>
North Dakota.....	11	+14.1			
Ohio.....	11	+2.9	<i>ALL HIGHWAYS—</i>		
Oklahoma.....	20	+4.6	<i>44 STATES.....</i>	<i>616</i>	<i>+7.4</i>
Oregon.....	10	+15.8			
Pennsylvania.....	<i>3 EASTERN REGIONS....</i>	<i>140</i>	<i>+6.0</i>
Rhode Island.....	2	-14.1	<i>4 CENTRAL REGIONS....</i>	<i>365</i>	<i>+7.0</i>
South Carolina.....	7	-2.5	<i>2 WESTERN REGIONS....</i>	<i>111</i>	<i>+11.2</i>
South Dakota.....	17	+11.0			
Tennessee.....	14	+13.0			

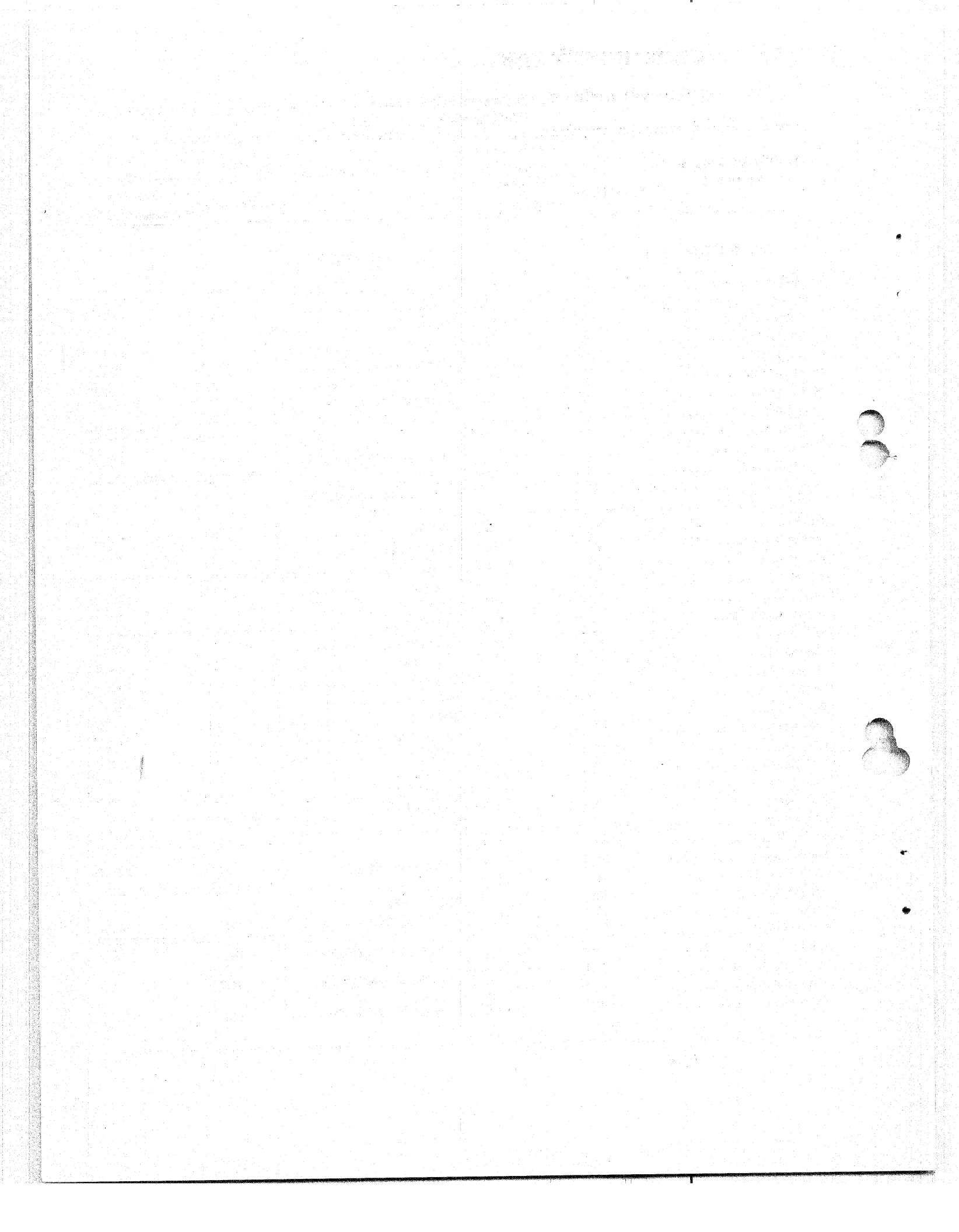


Table 2.—REVISED SUMMARY OF AUTOMATIC TRAFFIC RECORDER DATA FOR AUGUST 1949 INCLUDING 720 STATIONS IN 47 STATES¹

Region and State	Number of stations	Traffic volume percentage change from Aug. 1948	Region and State	Number of stations	Traffic volume percentage change from Aug. 1948
NEW ENGLAND:			EAST SOUTH CENTRAL:		
Connecticut.....	20	+7.8	Alabama.....	9	+5.8
Maine.....	12	+6.5	Kentucky.....	13	+6.3
Massachusetts.....	8	+7.6	Mississippi.....	10	+12.8
New Hampshire.....	15	+4.9	Tennessee.....	14	+11.4
Rhode Island.....	3	-15.5	<i>Subtotal</i>	46	+9.0
Vermont.....	12	+10.6	WEST SOUTH CENTRAL:		
<i>Subtotal</i>	70	+7.0	Arkansas.....	20	+19.7
MIDDLE ATLANTIC:			Louisiana.....	16	+7.7
New Jersey.....	4	+8.5	Oklahoma.....	20	+5.1
New York.....	Texas.....	83	+9.2
Pennsylvania.....	27	+12.4	<i>Subtotal</i>	139	+9.2
<i>Subtotal</i>	31	+11.2	MOUNTAIN:		
SOUTH ATLANTIC:			Arizona.....	5	-0.2
Delaware.....	7	+20.3	Colorado.....	22	+18.5
Maryland.....	18	+12.8	Idaho.....	8	+11.9
Virginia.....	3	+9.1	Montana.....	12	+10.4
West Virginia.....	11	+0.8	Nevada.....	16	+1.3
<i>Subtotal north</i>			New Mexico.....	16	+5.2
<i>portion</i>	39	+11.0	Utah.....	12	+6.9
Florida.....	18	+6.2	Wyoming.....	5	+1.6
Georgia.....	10	+5.2	<i>Subtotal</i>	96	+8.8
North Carolina.....	20	+13.5	PACIFIC:		
South Carolina.....	10	+7.1	California.....	6	+1.3
<i>Subtotal south</i>			Oregon.....	13	+21.2
<i>portion</i>	58	+9.1	Washington.....	10	+4.6
<i>Subtotal</i>			<i>Subtotal</i>	29	+10.0
<i>region</i>	97	+10.2	TOTAL ALL STATES.....		
EAST NORTH CENTRAL:				720	+6.7
Illinois.....	3	+2.7	STATE HIGHWAYS.....		
Indiana.....	22	+6.3		688	+7.0
Michigan.....	28	+6.2	LOCAL HIGHWAYS.....		
Ohio.....	16	+7.9		32	+5.7
Wisconsin.....	8	-5.2	3 EASTERN REGIONS....		
<i>Subtotal</i>	77	+4.8		198	+9.4
WEST NORTH CENTRAL:			4 CENTRAL REGIONS....		
Iowa.....	32	+14.1		397	+4.8
Kansas.....	12	-0.6	2 WESTERN REGIONS....		
Minnesota.....	24	+8.1		125	+7.5
Missouri.....	27	+10.9			
Nebraska.....	10	+11.8			
North Dakota.....	13	+9.6			
South Dakota.....	17	+5.8			
<i>Subtotal</i>	135	+9.4			

¹ Combined State and local highways.

Table 3.—NUMBER OF VEHICLES, CLASSIFIED BY TYPES, USING TOLL FACILITIES IN SEPTEMBER 1949 COMPARED WITH THOSE IN SEPTEMBER 1948

Facilities	1949			Percentage change from 1948		
	Total	Passenger cars ¹	Trucks and busses	Total	Passenger cars	Trucks and busses
E A S T E R N R E G I O N S						
4 in the New England States.....	1,566,244	1,430,626	135,618	+14.9	+15.2	+12.4
8 in the Middle Atlantic States.....	8,562,149	7,169,255	1,392,894	+6.3	+6.1	+7.1
2 parkways in the Middle Atlantic States.....	1,979,313	1,979,313	+7.1	+7.1
Pennsylvania Turnpike ²	410,126	330,775	79,351	+11.8	+9.5	+22.6
Maine Turnpike ²	184,868	169,115	15,753	+4.8	+3.5	+21.3
5 in the South Atlantic States.....	624,904	507,310	117,594	+18.0	+18.9	+14.5
TOTAL 21 FACILITIES.....	13,327,604	11,586,394	1,741,210	+8.0	+8.0	+9.0
C E N T R A L R E G I O N S						
4 on the Great Lakes Canadian border ³	737,620	708,687	28,933	-6.4	-6.4	+3.6
1 in the Great Lakes Region.....	66,550	63,123	3,427	-1.1	-0.9	-5.1
Subtotal 5 facilities.....	804,170	771,810	32,360	-5.6	-6.0	+2.6
3 on the Ohio River.....	358,015	315,057	42,958	+2.0	+3.1	-5.2
7 on the Mississippi and St. Croix Rivers, St. Louis and North.....	780,022	675,462	104,560	+7.6	+8.1	+4.4
4 on the Mississippi River south of St. Louis.....	228,410	172,327	56,083	+16.9	+17.5	+15.2
Subtotal 14 facilities.....	1,366,447	1,162,846	203,601	+7.5	+8.0	+4.9
4 on the Missouri River.....	216,268	182,001	34,267	+0.1	+1.0	-4.6
3 in the West South Central States.....	29,737	28,056	1,681
Subtotal 7 facilities.....	246,005	210,057	35,948	+0.5	+1.3	-4.1
TOTAL 26 FACILITIES.....	2,416,622	2,144,713	271,909	+2.0	+2.0	+3.3
W E S T E R N R E G I O N S						
2 in California.....	3,182,385	2,900,709	281,676	+9.0	+9.6	+3.8
4 in the Oregon-Washington Area.....	132,227	112,477	19,750	+0.3	+4.1	-17.24
TOTAL 6 FACILITIES.....	3,314,612	3,013,186	301,426	+8.6	+9.3	+2.1
U N I T E D S T A T E S						
TOTAL 53 FACILITIES.....	19,058,838	16,744,293	2,314,545	+7.3	+7.3	+7.1

¹ Non-revenue vehicles (when reported) included in report and treated as passenger cars unless otherwise specified. ² Number of vehicles, those using any portion of the facility. ³ Two of these facilities are in Western New York and therefore are related to similar facilities in the Central States.



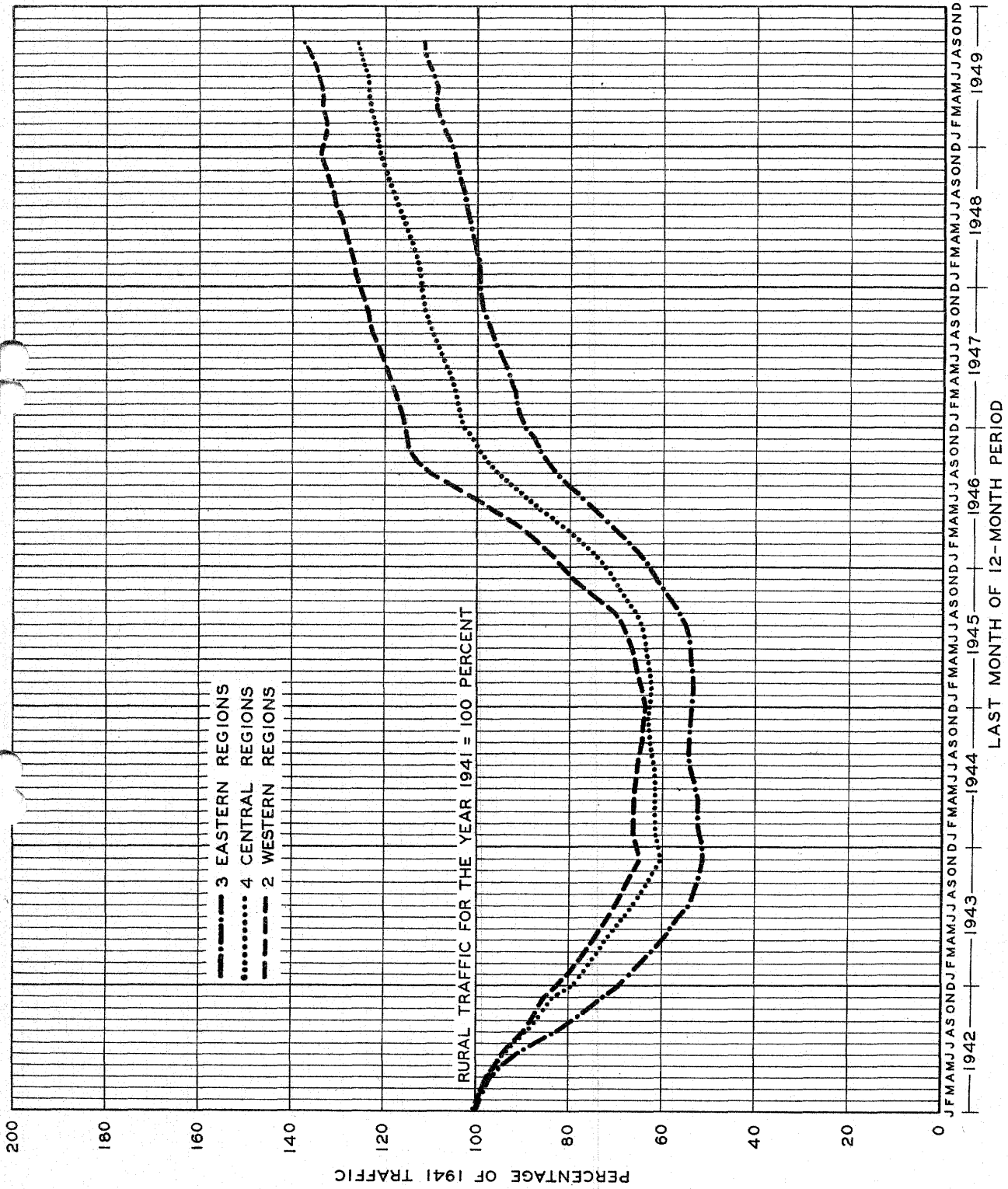


FIGURE 1 - TRAFFIC FOR YEAR ENDING EACH MONTH 1942 TO DATE AS A PERCENTAGE OF TRAFFIC FOR THE CALENDAR YEAR 1941 BY GEOGRAPHIC REGIONS

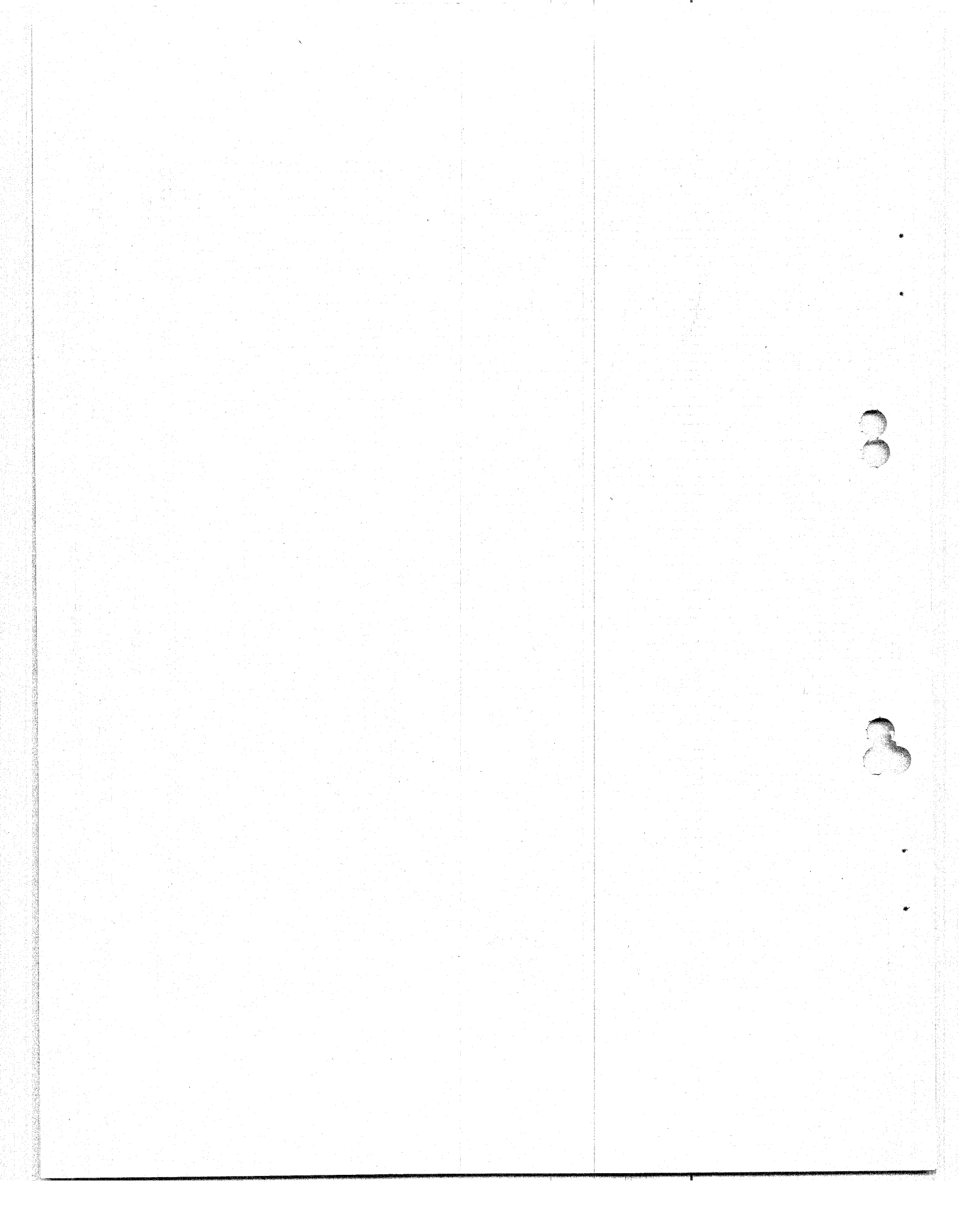
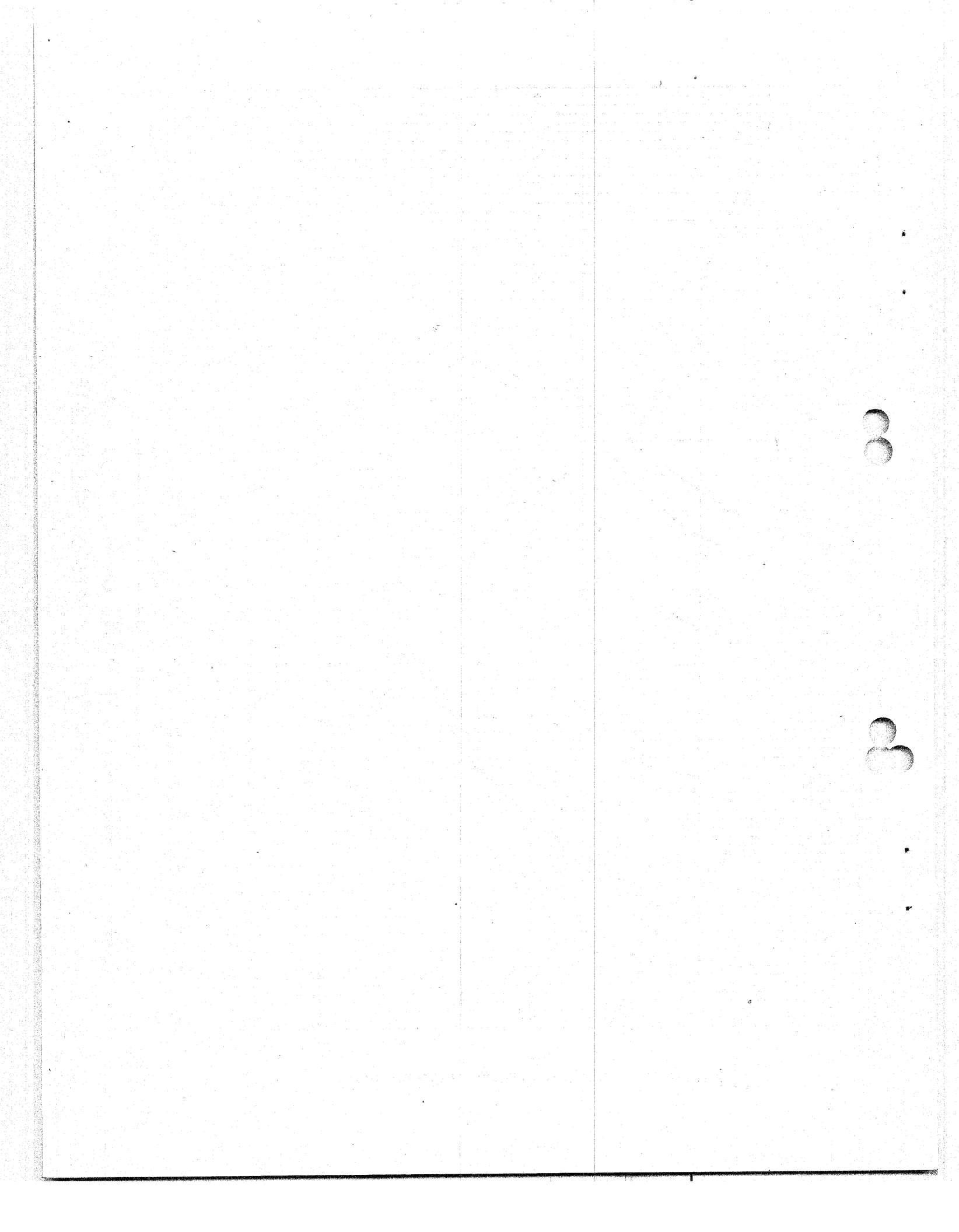




FIGURE 2 - VEHICLE-MILES OF TRAVEL ON ALL RURAL ROADS BY 12 MONTH PERIODS
ENDING EACH MONTH - 1941 TO DATE



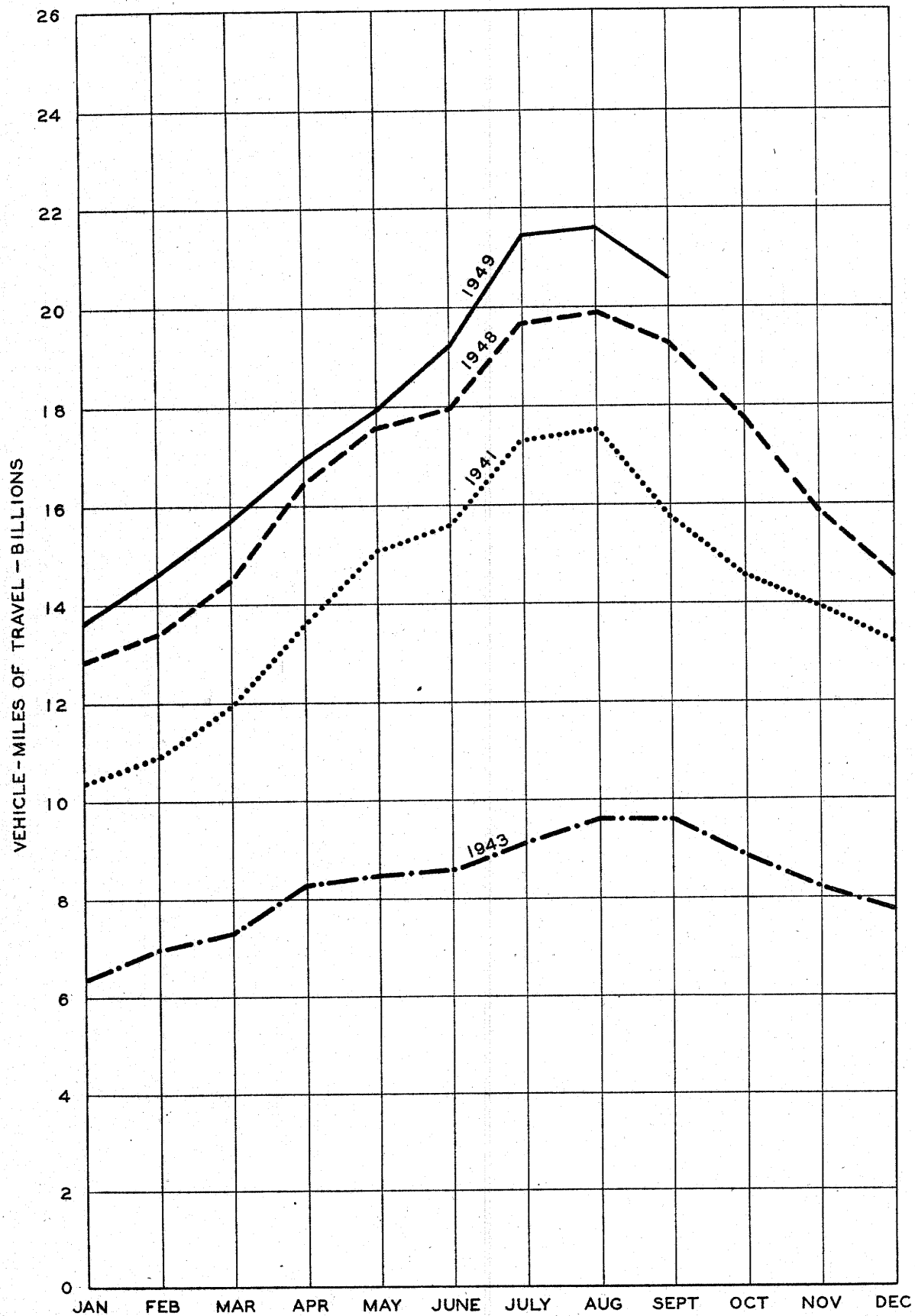


FIGURE 3 - VEHICLE-MILES OF TRAVEL ON ALL RURAL ROADS
IN 1941, 1943, 1948 AND 1949

