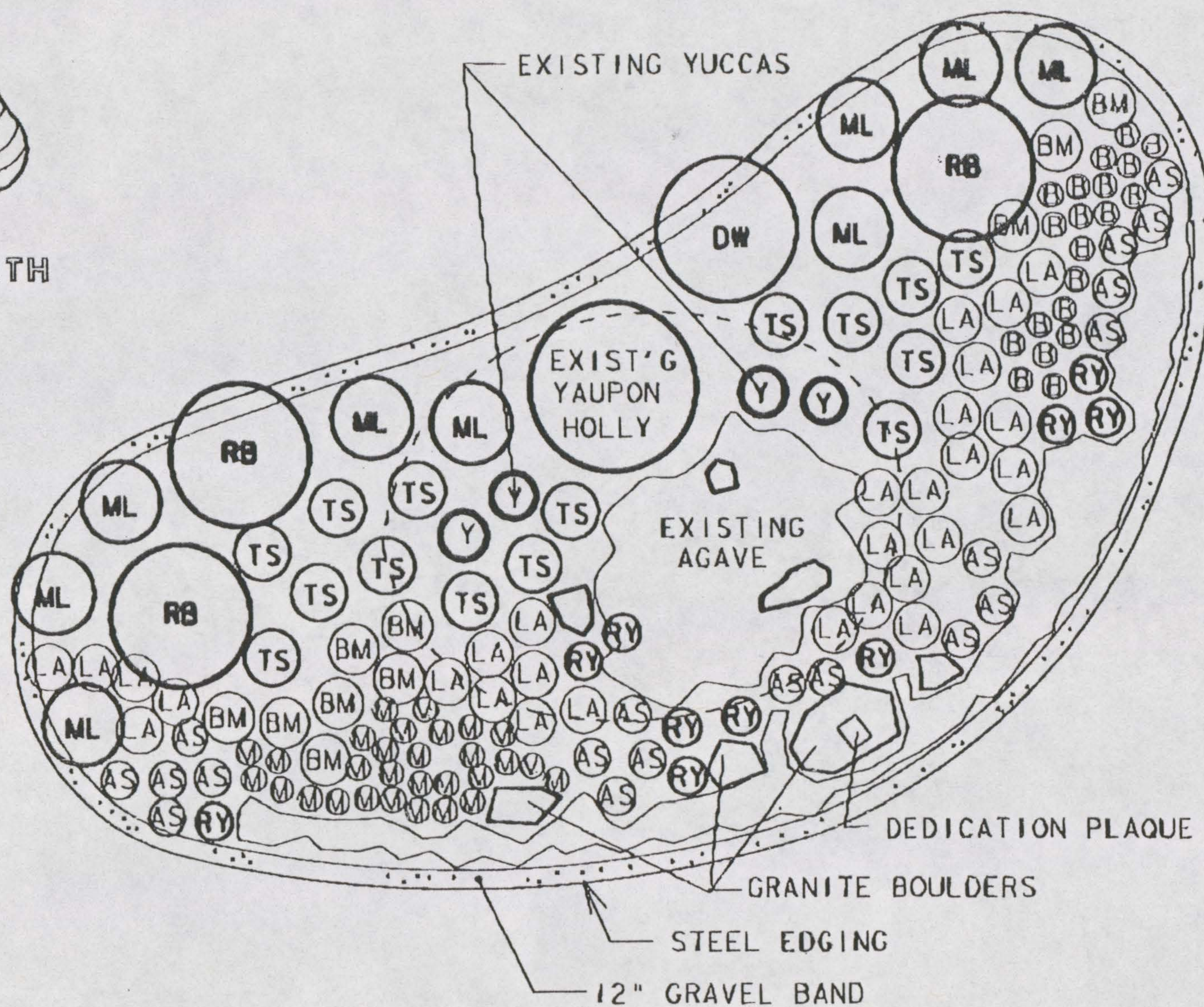


3h.3



PLANT KEY

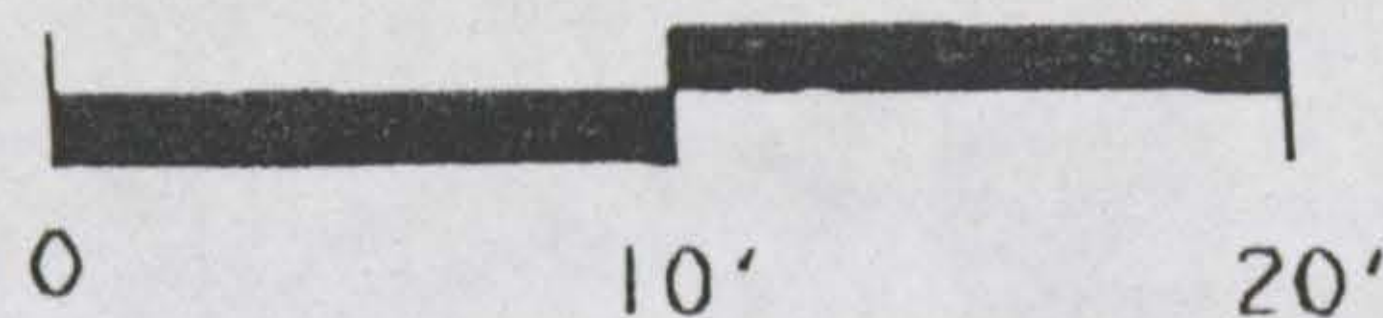
- DW DESERT WILLOW
- RB TEXAS REDBUD
- ML MOUNTAIN LAUREL
- TS TEXAS SAGE
- BM BIG MUHLY
- RY RED YUCCA
- AS AUTUMN SAGE
- LA TEXAS LANTANA
- V GULF MUHLY
- B LITTLE BLUESTEM



SELECT PERENNIAL COLOR

- BLACK DALEA
- BLACKFOOT DAISY
- BLACK-EYED SUSAN
- FALL OBEDIENT PLANT
- FLAME ACANTHUS
- FOUR NERVE DAISY
- MEXICAN BUSH SAGE
- PAVONIA
- PINK SKULLCAP
- PURPLE CONEFLOWER
- SILVER DALEA
- SKELETON LEAF GOLDEN EYE
- TEXAS STAR HIBISCUS
- TWO-LEAVED SENNA
- WILD BLUE ASTER
- WILD PETUNIA

LANDSCAPE PLAN



DEDICATION GARDEN

A PLANTING OF TEXAS NATIVES AND WILDFLOWERS
DEDICATED TO MRS. LYNDON JOHNSON

LOCATED AT THE 'CHURCH PARK' REST AREA
ON US 290 NEAR THE LBJ RANCH

TEXAS DEPARTMENT OF TRANSPORTATION
KERRY BLACKMON • LANDSCAPE ARCHITECT • AUSTIN DISTRICT

** TOTAL PAGE 005 **

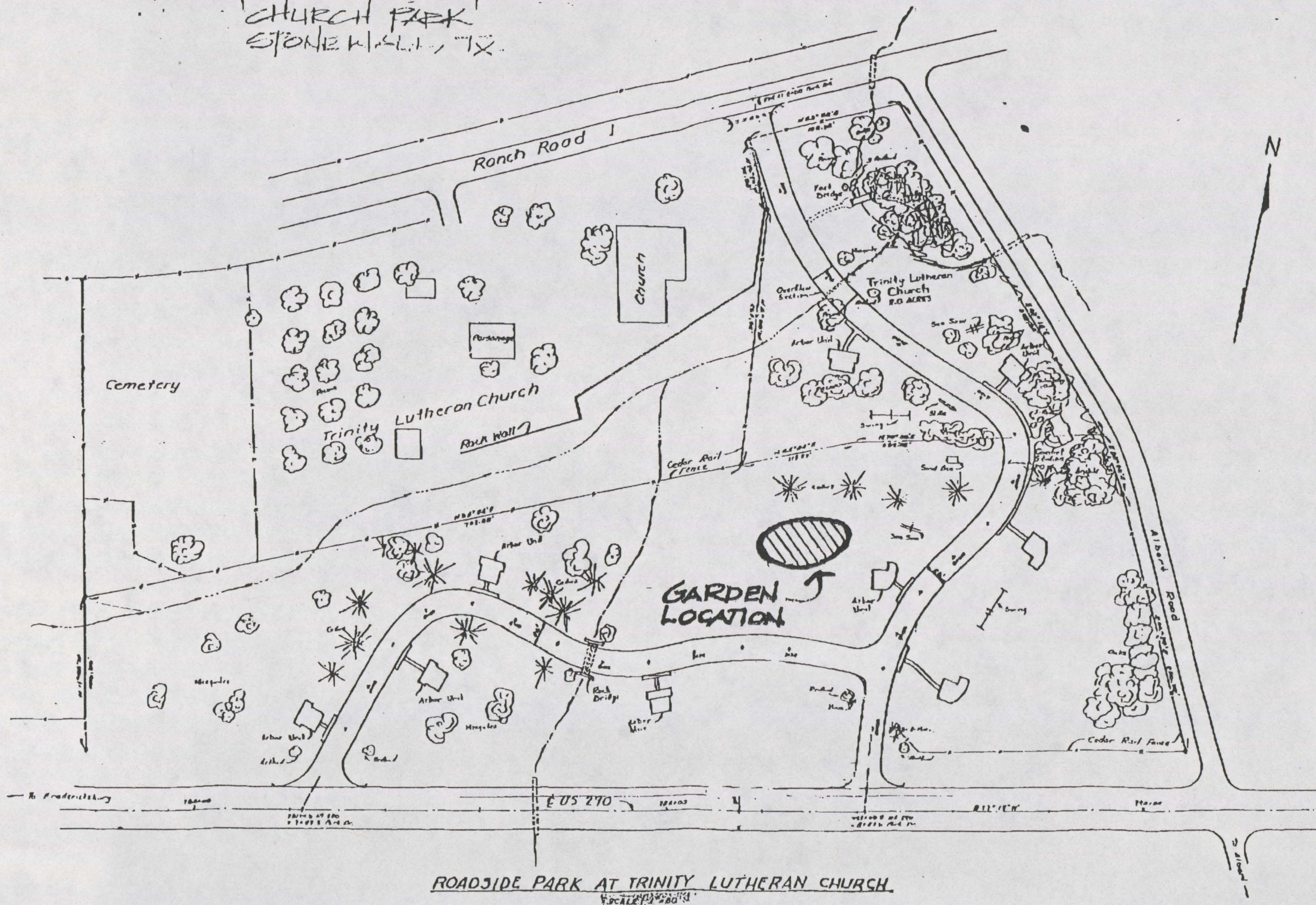
FILED IN 57 11:00 PM TX DOT

512 832 7148 TO 82023667270

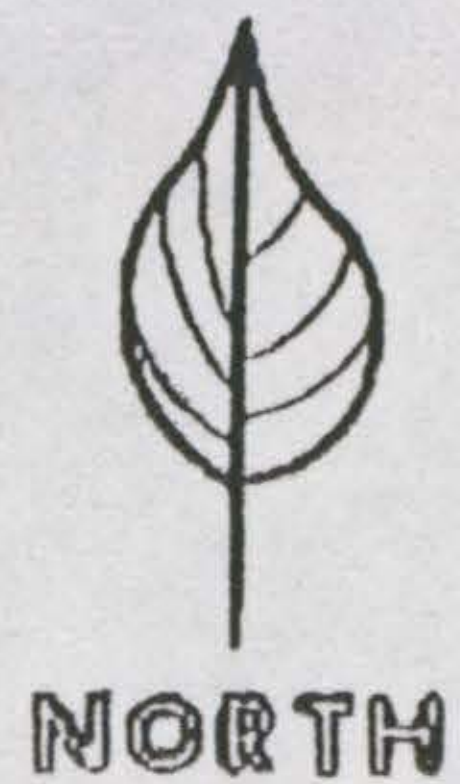
P.05/1

DIT LANE

CHURCH PARK
STONE WISL, TX



ROADSIDE PARK AT TRINITY LUTHERAN CHURCH
SCALE: 1" = 80'



FREDRICKSBURG

US 290
20 MILES

LBJ RANCH

COUNTY LINE

US 281

JOHNSON CITY

6 MILES

INTERSTATE 35

AUSTIN

US 290
42 MILES

'CHURCH PARK'
SITE

1 MILE 12 MILES

GILLESPIE CO.
BLANCO CO.

← TO SAN ANTONIO

LOCATION MAP

DEDICATION GARDEN
A PLANTING OF TEXAS NATIVES AND WILDFLOWERS
DEDICATED TO MRS. LYNDON JOHNSON

LOCATED AT THE 'CHURCH PARK' REST AREA
ON US 290 NEAR THE LBJ RANCH

TEXAS DEPARTMENT OF TRANSPORTATION
AUSTIN DISTRICT