

The *Pocket Guide to Transportation* is a quick reference guide that provides transportation statistics at your fingertips. It delivers key information and highlights major trends on the U.S. transportation system. Use the QR code to access your copy today.



ABOUT BTS

As the independent statistical agency within the U.S. Department of Transportation, the **Bureau of Transportation Statistics** (BTS) is a politically objective supplier of trusted and statistically sound baseline, contextual, and trend information that is used to shape transportation policy, investments, and research across the United States and abroad.

BTS is a leading source of timely, accurate, and reliable information on the U.S. transportation systems used for moving people and goods, and on their impacts on the economy, society and the environment.

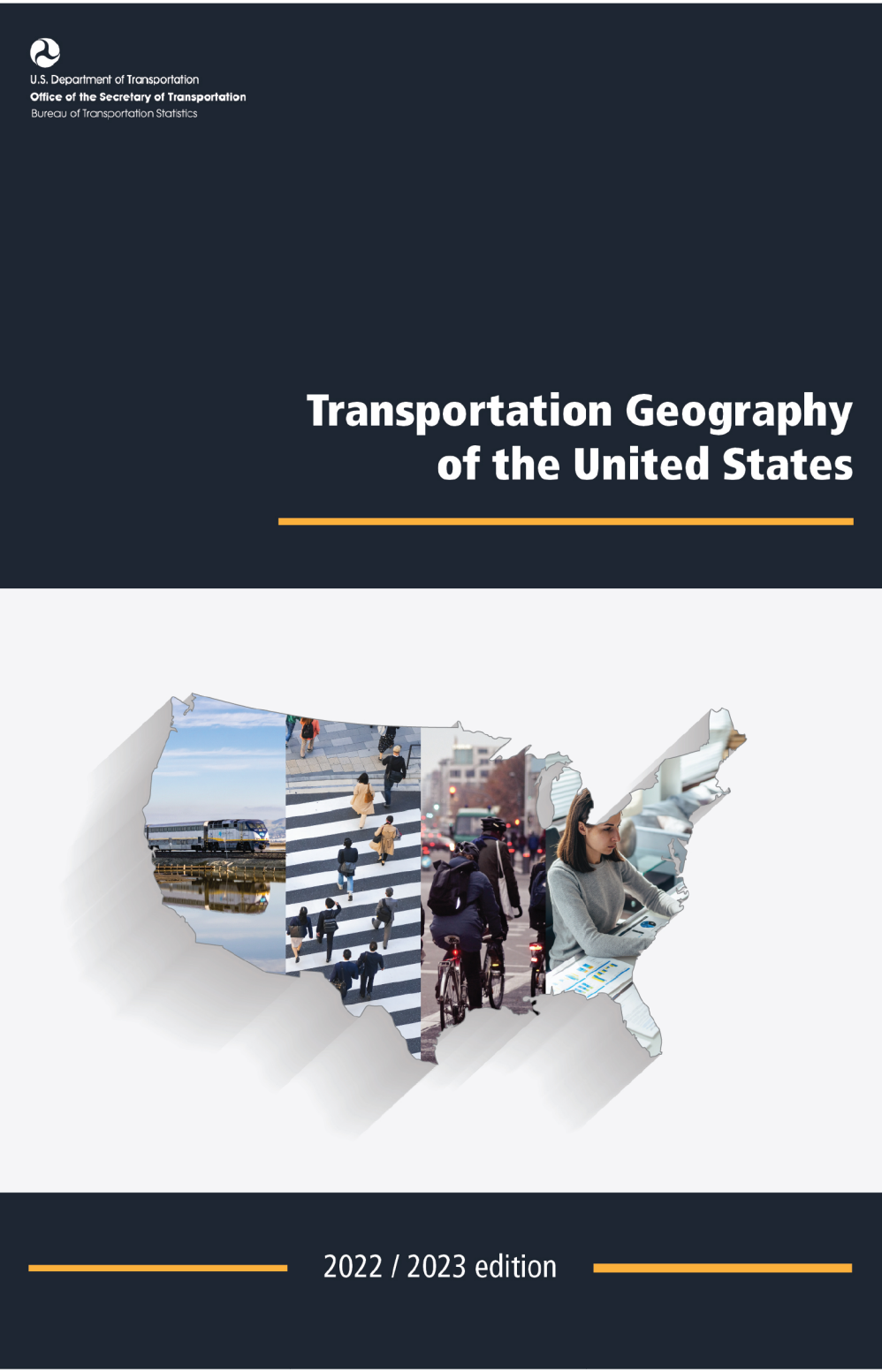
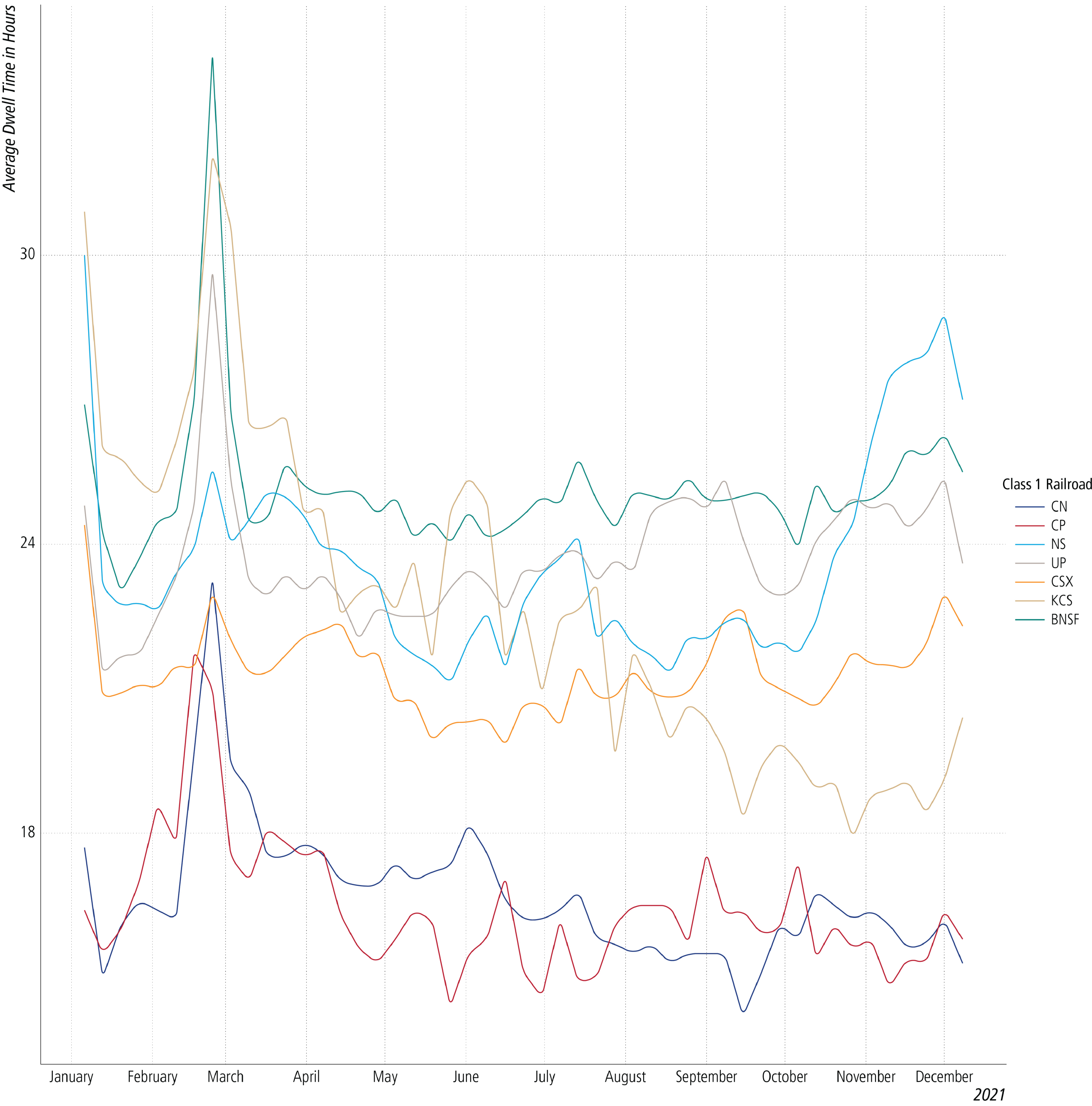
The Bureau's **Office of Spatial Analysis and Visualization** develops maps, geospatial information, and visualization tools, conducts spatial and network analyses, coordinates the transportation layer of the National Spatial Data Infrastructure, and publishes the **National Transportation Atlas Database** (NTAD). The NTAD is a collection of 70+ nationwide geospatial databases of transportation facilities, networks, and associated infrastructure that is used by government, industry and the public to support research, analysis, and decision-making across all modes of transportation. To learn more about BTS' geospatial efforts, visit us at www.bts.gov/maps.

For the most up-to-date happenings in transportation statistics, follow [@TransportStats](https://twitter.com/TransportStats) on Twitter or visit us at www.bts.gov.

Amtrak Route Network



Weekly Average Terminal Dwell Time by Class 1 Railroad

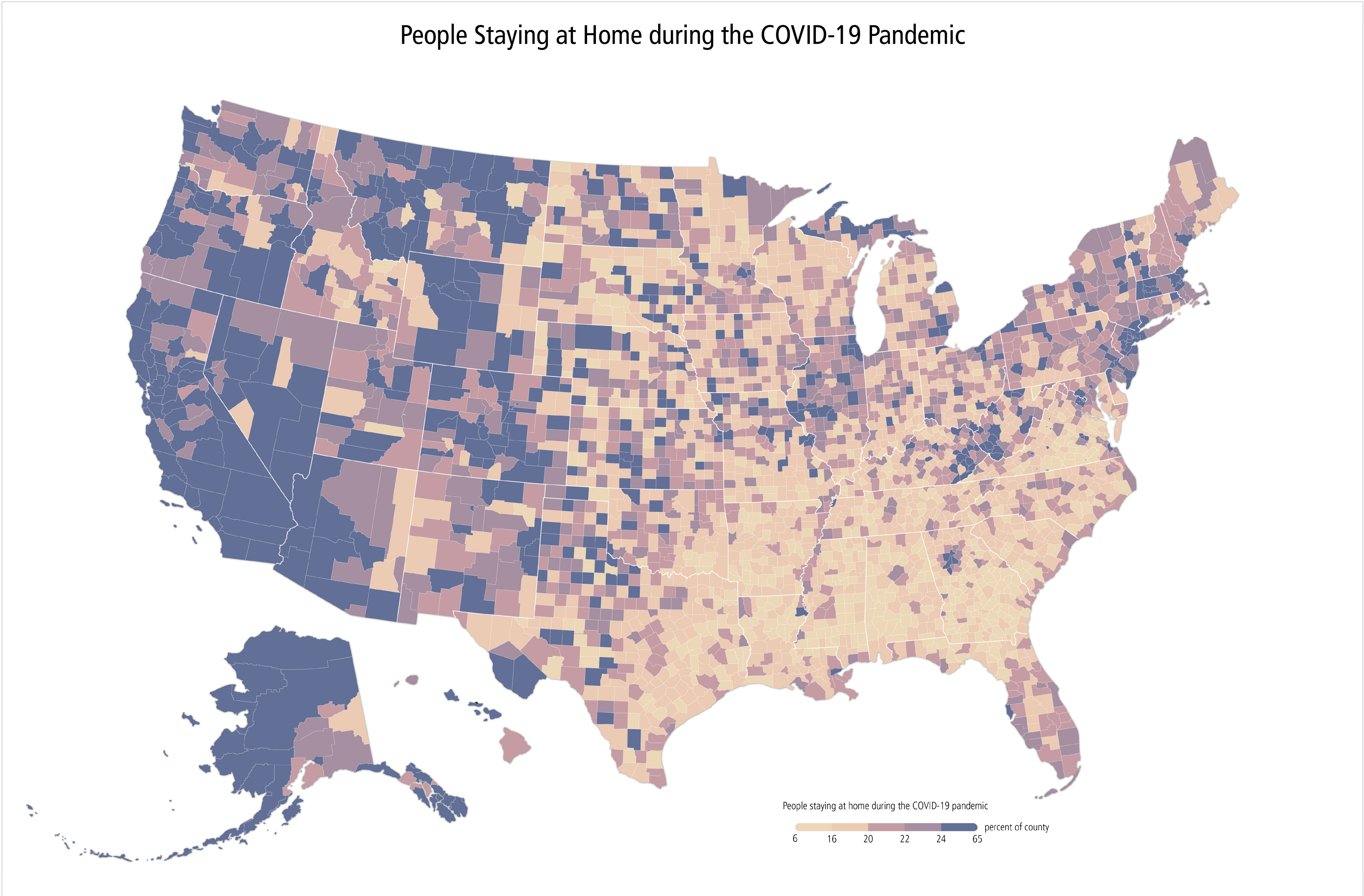


Geospatial at the Bureau of Transportation Statistics

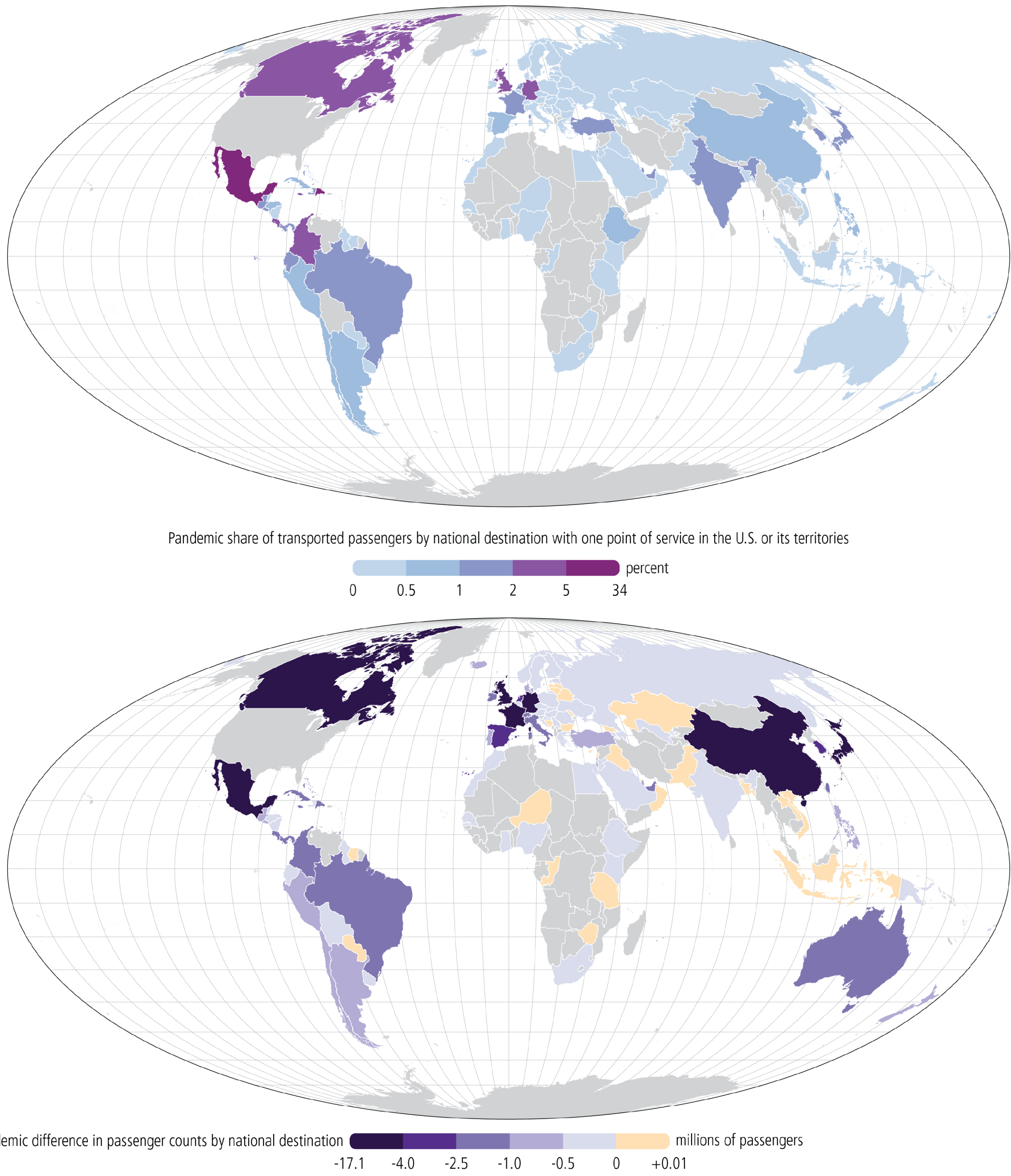


Text **USDOT BTSMAP** to **468311** to access the digital version of this map or visit us at www.bts.gov/maps.

People Staying at Home during the COVID-19 Pandemic



Pandemic Trends in Air Travel by National Destination



NOTES & SOURCES:
Select Transportation Infrastructure of the United States (front)
NOTES: Major airports include only airports with 1 million enplanements or more in 2020. Major ports include only ports with a total tonnage of 10 million or more in 2019. Border crossings are shown for all passenger ports of entry with a road border crossing. Density of detail requires minor displacement of some symbols. This map should not be used for navigational purposes.
SOURCES: U.S. Department of Transportation, Bureau of Transportation Statistics, National Transportation Atlas Database, 2021. United States Geological Survey Domestic Names and Geographic Information System (GNIS), 2021. Natural Earth, 2021.
Amtrak Route Network (back)
NOTES: Route geometry has been simplified manually referencing the Amtrak route file. Several Amtrak stations have been omitted to main legibility at the national scale.
SOURCES: U.S. Department of Transportation, Bureau of Transportation Statistics, National Transportation Atlas Database, 2021. Commission for Environmental Cooperation, North American Environmental Atlas, Landcover 30 meters, Landsat and RapidEye, 2015.
Weekly Average Terminal Dwell Time by Class 1 Railroad (back)
NOTES: Weekly terminal dwell time data from the Surface Transportation Board's (STB) Rail Service Metrics compiled by the U.S. Department of Transportation, Federal Railroad Administration, 2021.
SOURCES: U.S. Department of Transportation, Bureau of Transportation Statistics and the Maryland Transportation Institute and Center for Advanced Transportation Technology Laboratory at the University of Maryland.
Pandemic Trends in Air Travel by National Destination (back)
NOTE: Pre-pandemic is defined as 2019 to March of 2020 and pandemic March 2020 to May 2021.
SOURCES: U.S. Department of Transportation, Bureau of Transportation Statistics, TardStats 1-100 International Segment (All Carriers), Destination Airport, World Area Code, 2021. Office of the Geographer and Global Issues at the U.S. Department of State, May 2021.