



May 12, 2011

MPD Challenges to Disseminate Information to the Transportation Community: The Case of the Mid-Ohio Regional Planning Commission

Alicia Kehrig, Administrative Supervisor - Transportation



**MPO Challenges to Disseminate Information to the
Transportation Community:
The Case of the
Mid-Ohio Regional Planning Commission**

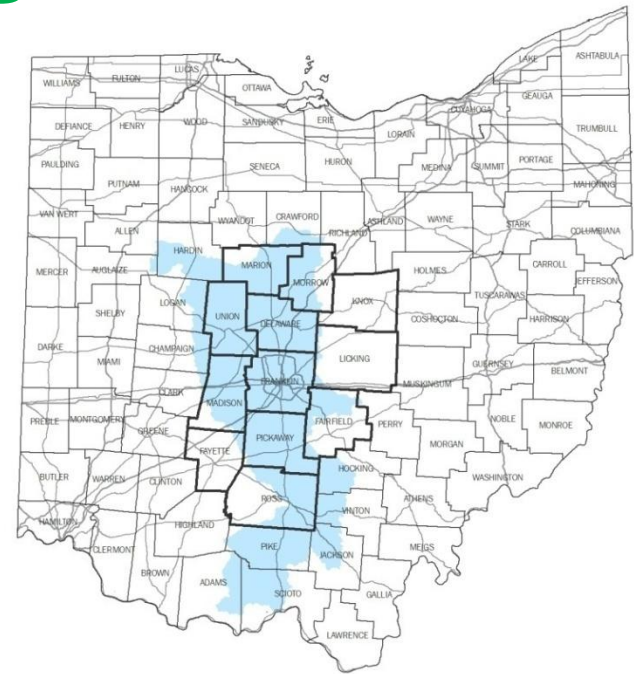
May 12, 2011

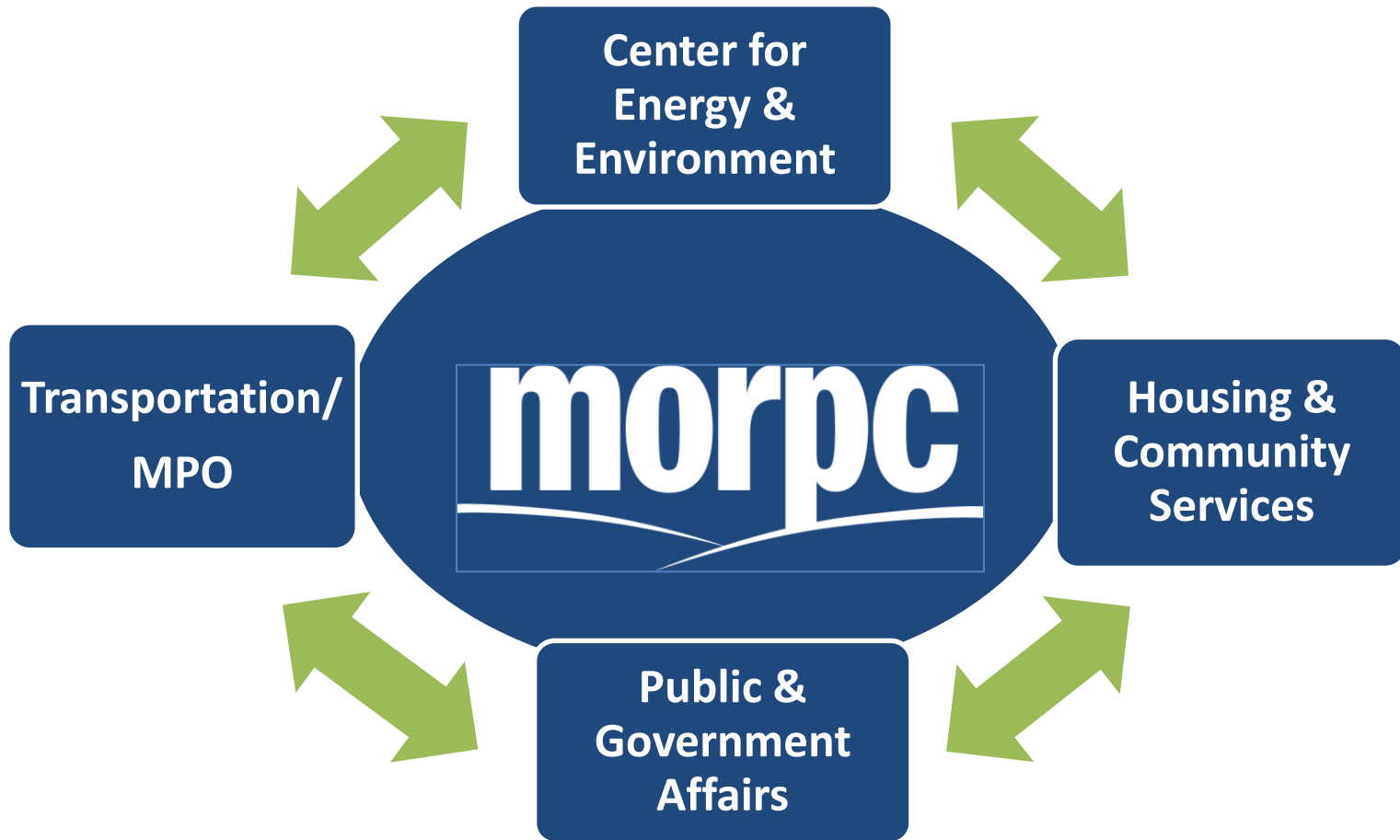


Who Is MORPC?

Mid-Ohio Regional Planning Commission

- 12-county, voluntary association of local governments
- Areas of focus: housing, transportation, environment, energy, local food, land use, economic development
- Serve very diverse audiences – urban, suburban and rural







Working to Build
a Better Region

[Info Center](#)

[Energy & Environment](#)

[Housing](#)

[Government Affairs](#)

[Regional Development](#)

[Transportation](#)

[Members](#)

Transportation Planning

Overview

- About the Metropolitan Planning Organization (MPO)
- Regional Transportation Planning
- News & Announcements
- ▶ [Bicycle & Pedestrian](#)
- ▶ [Metropolitan Transportation Plan](#)
- ▶ [Complete Streets](#)
- ▶ [DataPort: Maps & Data](#)
- ▶ [Freight](#)
- ▶ [Funding & Grants](#)
- ▶ [Highway Planning](#)
- ▶ [Public Involvement](#)
- ▶ [RideSolutions](#)
- ▶ [Rules of the Road](#)
- ▶ [Safety](#)
- ▶ [Security](#)
- ▶ [Studies & Plans](#)
- ▶ [Transit](#)

Video (77 MB / 11:28): [An Introduction to Metropolitan Transportation Planning](#)

Sponsored by

[Federal Highway Administration](#)
[Federal Transit Administration](#)
[National Highway Institute](#)
[National Transit Institute](#)

Produced by Parsons Brinckerhoff

©2003 FHWA



region.

At MORPC, our transportation planning is responsive to the changing social, economic, environmental and demographic conditions of the central Ohio region. Some of the biggest transportation issues facing our region are congestion, maintaining mobility and growth in the region, balancing the need for travel with the quality of life in communities, providing accessible travel options, sustainable funding to maintain and expand our transportation system, and our environment.

Transportation is the key to connecting and moving people, goods and services. Whether it is getting to work by car, biking to the store, or moving freight, transportation is at the forefront of ensuring a high quality of life for the central Ohio region.

As a metropolitan planning organization (MPO), the U.S. Department of Transportation recognizes MORPC as the official transportation planning agency for the mid-Ohio

Summer 2010 Issue of Transportation Connections



The [Summer 2010](#) issue of Transportation Connections features articles on Shaping our Future: the Regional Plan for Central Ohio, the 2012 Metropolitan Transportation Plan, a summary of the ARRA Stimulus funding, the Principles and Procedures for soliciting projects for the Transportation Improvement Program (TIP), MORPC's Complete Streets Policy and other topics that help shape our regional transportation system. We welcome you to review the information included in Transportation Connections and encourage you to comment and participate in the events featured.

Inaugural Issue of Complete Streets



[Complete Streets](#) is a new twice-yearly newsletter that reports progress with MORPC's Complete Streets toolkit (a resource that will contain model policies, engineering, enforcement, education, and encouragement strategies) as well as other news relevant to Complete Streets efforts in central Ohio.

Included with this issue is a [fact sheet](#) about MORPC's Complete Streets policy, with answers to some frequently asked questions.

Working to Build a Better Region

[Info Center](#)

[Energy & Environment](#)

[Housing](#)

[Government Affairs](#)

[Regional Development](#)

[Transportation](#)

[Members](#)

Info Center

- ▶ [About MORPC](#)
- ▶ [Art in the Halls Program](#)
- ▶ [Job Opportunities](#)
- ▶ [Calendar](#)
- ▶ [News & Events](#)
- ▶ [Press Center](#)
- ▶ [Studies & Plans](#)
- ▼ [DataPort: Maps & Data](#)
 - [Demographics](#)
 - [Land Use](#)
 - [Economic Development](#)
 - [Transportation](#)
 - [Environmental](#)
 - [GIS](#)
 - [Aerials](#)
 - [411](#)
 - [Feedback](#)
 - [Map Room](#)
- ▶ [RFPs & RFQs](#)
- ▶ [Grants](#)

DataPort: Maps & Data

Welcome to the MORPC DataPort! This website was developed as a one-stop shop for accessing regional information developed by MORPC about planning, demographics, land use, economic development, transportation, maps, contact lists, and GIS data in Central Ohio. It is also a portal to other federal, state, and locally developed information sets that may be more appropriate sources to answer your data needs.

Please let us know if you have found this site useful or have suggestions on how we can make it better by contacting us via the [Feedback](#) page.

[Demographics](#)

Age, race, gender, education level, income, and household characteristics

[Land Use](#)

Existing and projected development

[Economic Development](#)

Maps and links

[Transportation](#)

Traffic counts, regional plans

[Environmental](#)

[GIS](#)

ArcGIS shapefiles

[Aerials](#)

Current and historical

[411](#)

Local government contacts and websites; plan library

[Feedback](#)

Questions, comments, or suggestions

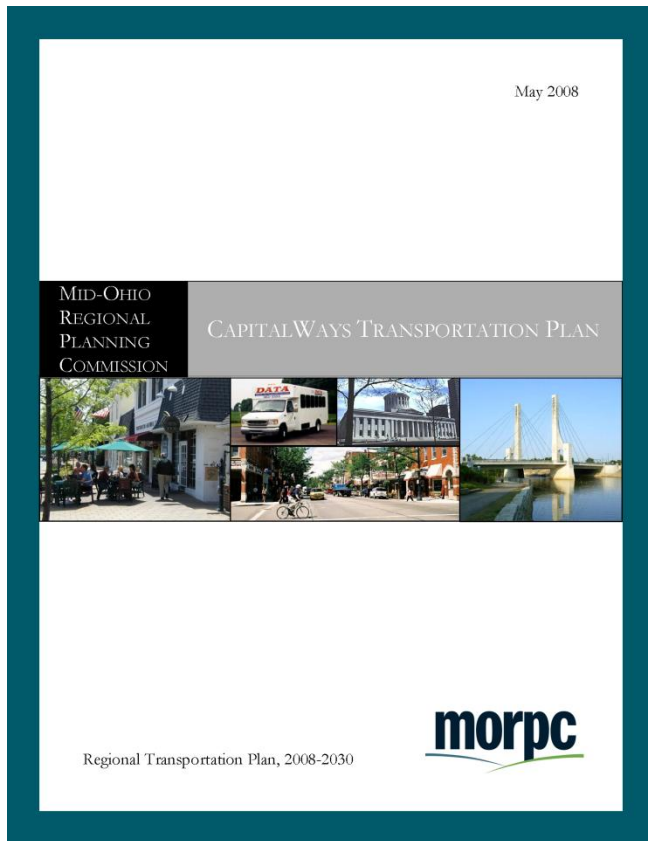
[Map Room](#)

Regional atlas, interactive maps

[Weave Demonstration](#) - Developed by MORPC and Community Research Partners, members of the Open Indicators Consortium.



Case Study No. 1



- MORPC's official metropolitan transportation plan for the greater Columbus region.
- Published May 2008



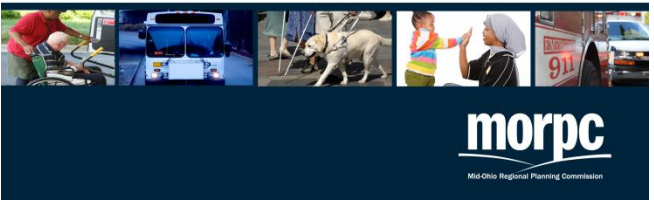
Case Study No. 2

THE PLANNING FRAMEWORK
FOR THE EVACUATION OF THE TRANSPORTATION NEEDS POPULATIONS OF CENTRAL OHIO

SEPTEMBER 30, 2010



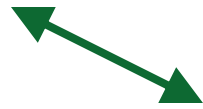
- Funded by 350K grant from FTA
- Published May 2010
- Won 2010 APA Planning Award for Outstanding Collaborative Planning Project or Program



morpc
Mid Ohio Regional Planning Commission



Metropolitan Planning Organizations (MPOs)



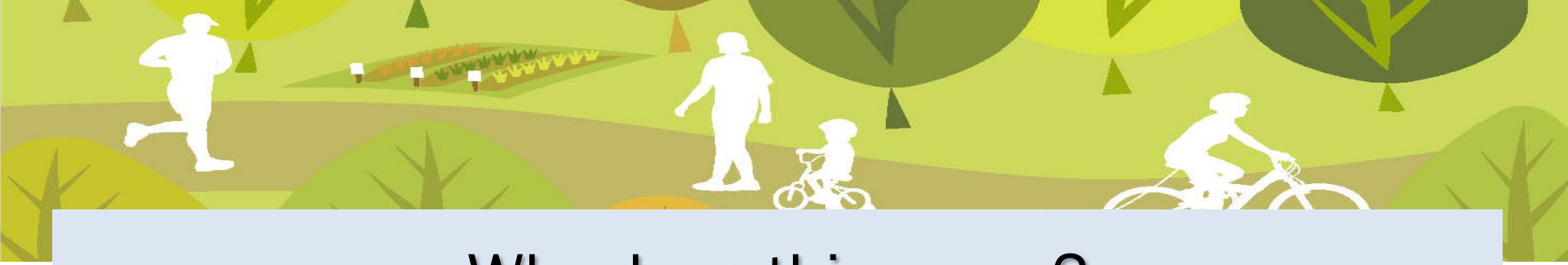
MPOs



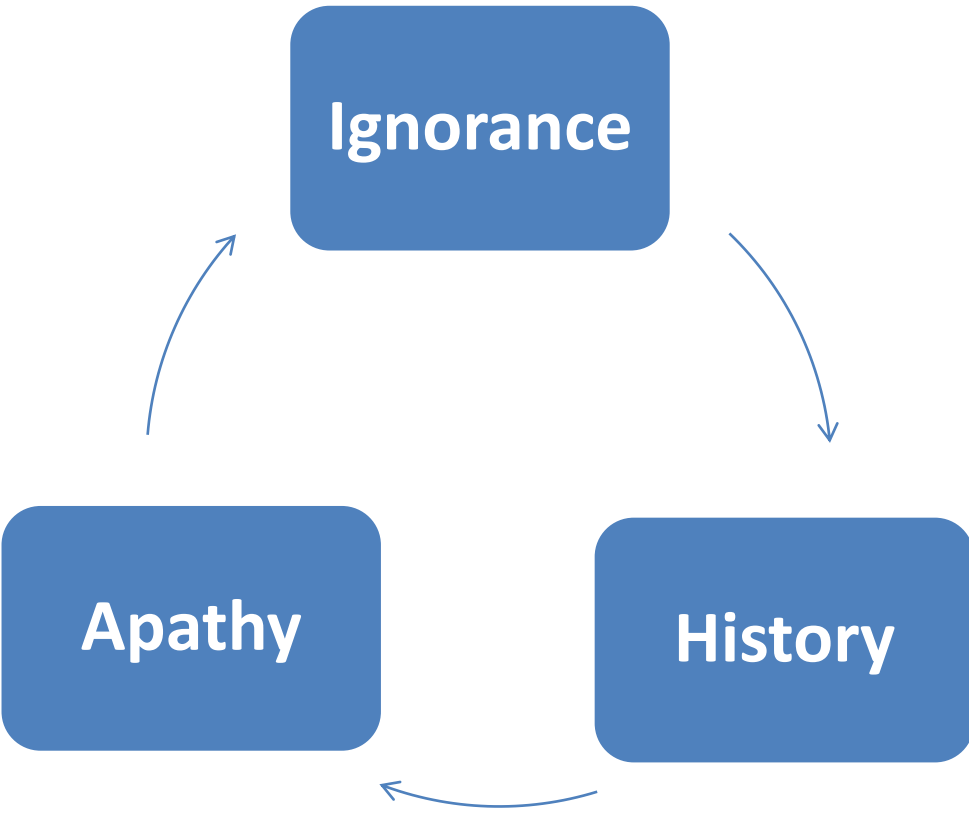
Local
Governments

Created by Congress to ensure best use of federal transportation funds to meet region's needs.

Bring together policy makers to determine region's transportation related goals, important issues, and projects and programs to meet them.



Why does this occur?





How do we fix this?