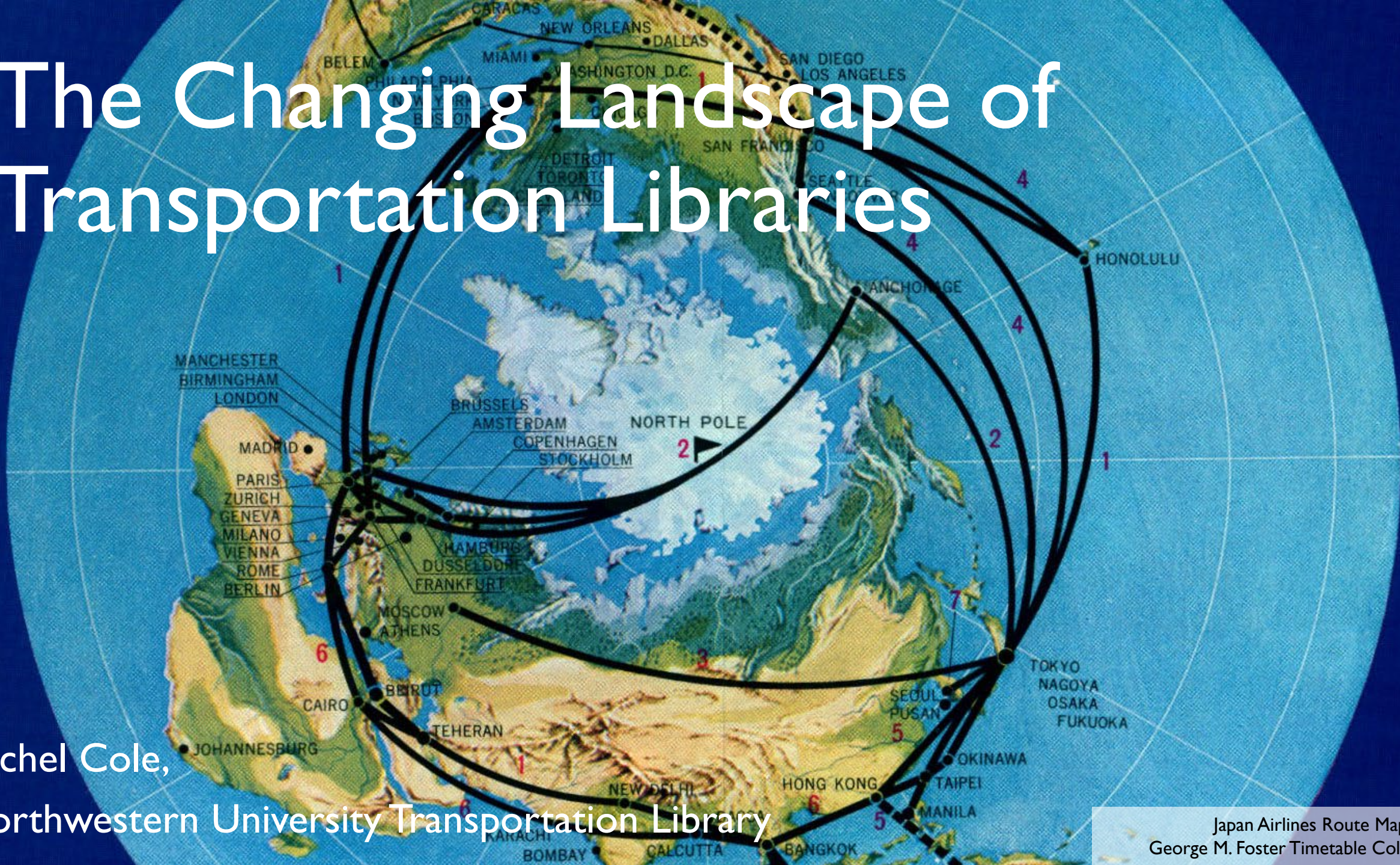


# The Changing Landscape of Transportation Libraries

Rachel Cole,  
Northwestern University Transportation Library

Japan Airlines Route Map, 1969.  
George M. Foster Timetable Collection.



# Northwestern's Transportation Library

- Founded in 1956 as the Transportation Center's library
- Supports the research needs of the Northwestern University Transportation Center
- Focus: Emerging technologies, ACES
- Broadly multidisciplinary: supports departments across the University.



# How has your role changed or evolved?

How can we grow and support each other  
in learning, research, and development in  
our changing landscape?

“The Dawn of the Electrical Era in Railroading.” 1916.

# Creating Content



Exhibits

Social Media

Blogging

Outreach

Communications

Graphic Design

# The Work Landscape Under COVID

Rio Grande Timetable, 1939.  
John A. Swider Timetable Collection.





# Connecting Our Community





...And Now What?

AASHTO/NTL - TLR

Roberto A. Sarmiento

Northwestern University Transportation Library

10/08/2020

# How did we get here?

- Evolving jobs & timing
- Pandemic trikes
- Everything shifted, again!
- Bob still wanted a presentation





# Recent Past & Current Situation

- Extended period of time: Everything is complicated
- Library optics / Relevancy
- Providing services and access to information & resources
- Teleworking & technology
- Uncertainty
- Our health



# How can we take control?

- Proactive NOT reactive
- What are your “givens”?
- Deep/strategic thinking required
  
- The big question: How to remain relevant?
  
- Two tools:
  - Your/Our networks
  - A “Future” document



# NETWORKS

- In time of crisis: rely on your communities
- Your organization: become a bigger/better team player
- Transportation information communities
  - TRANLib – Our center square
  - Under utilized
  - We all get stronger/better if we share
  - “Almost” no time required



# NUTL “Future” Document

- Why?
- What is it?
- Structure
  - Givens
  - Budget(s)
  - Staffing
  - Collections + collection development
  - Special projects: digitization, e-exhibits, etc.
  - Services
  - Facilities
  - Partnerships: internal & external
  - Threads & opportunities
- Results



# Thank you and remember, wash your hands!



Roberto A. Sarmiento

[r-sarmiento@northwestern.edu](mailto:r-sarmiento@northwestern.edu)

[www.library.northwestern.edu/libraries-collections/transportation](http://www.library.northwestern.edu/libraries-collections/transportation)

[www.instagram.com/transportationlibrary](http://www.instagram.com/transportationlibrary)