

TOPO INDEX

| TOWN | INDEX | POP. |
|---------|-------|--------|
| Abilene | 115 | 10,000 |
| Abilene | 116 | 10,000 |
| Abilene | 117 | 10,000 |
| Abilene | 118 | 10,000 |
| Abilene | 119 | 10,000 |
| Abilene | 120 | 10,000 |
| Abilene | 121 | 10,000 |
| Abilene | 122 | 10,000 |
| Abilene | 123 | 10,000 |
| Abilene | 124 | 10,000 |
| Abilene | 125 | 10,000 |
| Abilene | 126 | 10,000 |
| Abilene | 127 | 10,000 |
| Abilene | 128 | 10,000 |
| Abilene | 129 | 10,000 |
| Abilene | 130 | 10,000 |
| Abilene | 131 | 10,000 |
| Abilene | 132 | 10,000 |
| Abilene | 133 | 10,000 |
| Abilene | 134 | 10,000 |
| Abilene | 135 | 10,000 |
| Abilene | 136 | 10,000 |
| Abilene | 137 | 10,000 |
| Abilene | 138 | 10,000 |
| Abilene | 139 | 10,000 |
| Abilene | 140 | 10,000 |

TEXAS HIGHWAY MAP

SUMMER EDITION

Corrected to June 1, 1939

LEGEND

- U.S. Route Number
- State Route Number
- PAVEMENT All Types
- SUBGRADE - gravel etc. All Weather
- IMPROVED - Earth Roads
- EARTH ROADS

All highways shown on this map are State maintained.

There are no toll bridges on the Texas highway system.

BLACK figures, mileage between towns

RED - accumulated mileage between triangles.

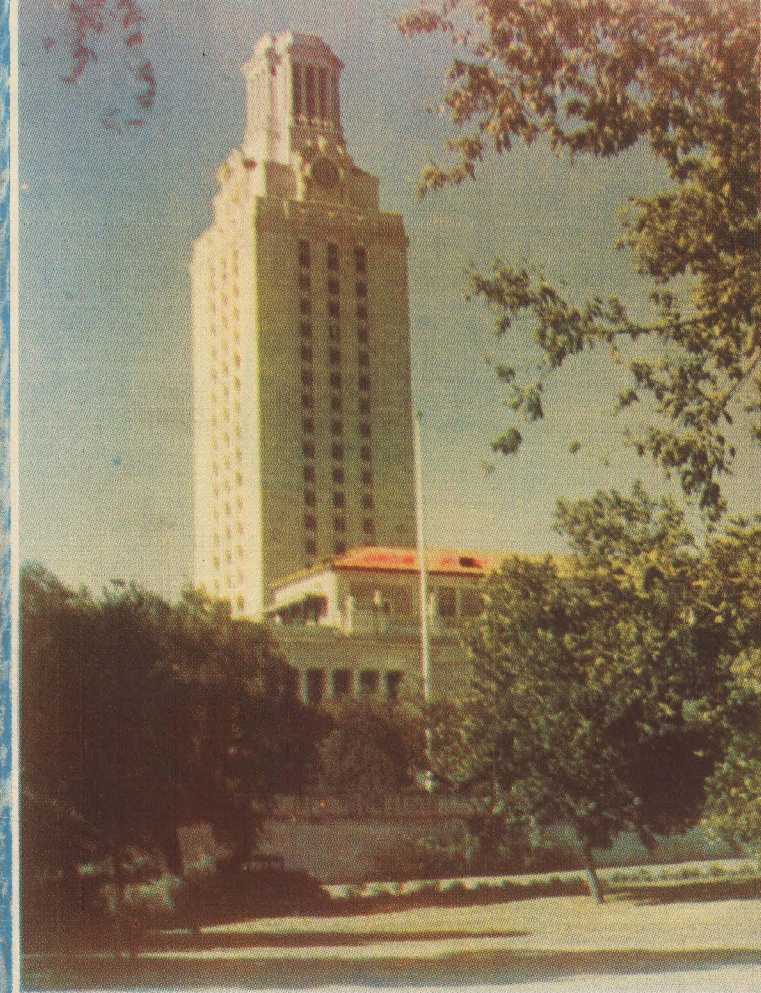
SCALE 0 10 20 30 40 50

1939 SUMMER EDITION
TEXAS HIGHWAY MAP
For free distribution only

1939 SUMMER EDITION
TEXAS HIGHWAY MAP
For free distribution only

TEXAS HIGHWAY PATROL STATIONS

| LOCATION | PHONE | LOCATION | PHONE No. | LOCATION | PHONE No. |
|----------|-------|----------|-----------|----------|-----------|
| Abilene | 244 | Abilene | 245 | Abilene | 246 |
| Abilene | 247 | Abilene | 248 | Abilene | 249 |
| Abilene | 250 | Abilene | 251 | Abilene | 252 |
| Abilene | 253 | Abilene | 254 | Abilene | 255 |
| Abilene | 256 | Abilene | 257 | Abilene | 258 |
| Abilene | 259 | Abilene | 260 | Abilene | 261 |
| Abilene | 262 | Abilene | 263 | Abilene | 264 |
| Abilene | 265 | Abilene | 266 | Abilene | 267 |
| Abilene | 268 | Abilene | 269 | Abilene | 270 |
| Abilene | 271 | Abilene | 272 | Abilene | 273 |
| Abilene | 274 | Abilene | 275 | Abilene | 276 |
| Abilene | 277 | Abilene | 278 | Abilene | 279 |
| Abilene | 280 | Abilene | 281 | Abilene | 282 |
| Abilene | 283 | Abilene | 284 | Abilene | 285 |
| Abilene | 286 | Abilene | 287 | Abilene | 288 |
| Abilene | 289 | Abilene | 290 | Abilene | 291 |
| Abilene | 292 | Abilene | 293 | Abilene | 294 |
| Abilene | 295 | Abilene | 296 | Abilene | 297 |
| Abilene | 298 | Abilene | 299 | Abilene | 300 |
| Abilene | 301 | Abilene | 302 | Abilene | 303 |
| Abilene | 304 | Abilene | 305 | Abilene | 306 |
| Abilene | 307 | Abilene | 308 | Abilene | 309 |
| Abilene | 310 | Abilene | 311 | Abilene | 312 |
| Abilene | 313 | Abilene | 314 | Abilene | 315 |
| Abilene | 316 | Abilene | 317 | Abilene | 318 |
| Abilene | 319 | Abilene | 320 | Abilene | 321 |
| Abilene | 322 | Abilene | 323 | Abilene | 324 |
| Abilene | 325 | Abilene | 326 | Abilene | 327 |
| Abilene | 328 | Abilene | 329 | Abilene | 330 |
| Abilene | 331 | Abilene | 332 | Abilene | 333 |
| Abilene | 334 | Abilene | 335 | Abilene | 336 |
| Abilene | 337 | Abilene | 338 | Abilene | 339 |
| Abilene | 340 | Abilene | 341 | Abilene | 342 |
| Abilene | 343 | Abilene | 344 | Abilene | 345 |
| Abilene | 346 | Abilene | 347 | Abilene | 348 |
| Abilene | 349 | Abilene | 350 | Abilene | 351 |
| Abilene | 352 | Abilene | 353 | Abilene | 354 |
| Abilene | 355 | Abilene | 356 | Abilene | 357 |
| Abilene | 358 | Abilene | 359 | Abilene | 360 |
| Abilene | 361 | Abilene | 362 | Abilene | 363 |
| Abilene | 364 | Abilene | 365 | Abilene | 366 |
| Abilene | 367 | Abilene | 368 | Abilene | 369 |
| Abilene | 370 | Abilene | 371 | Abilene | 372 |
| Abilene | 373 | Abilene | 374 | Abilene | 375 |
| Abilene | 376 | Abilene | 377 | Abilene | 378 |
| Abilene | 379 | Abilene | 380 | Abilene | 381 |
| Abilene | 382 | Abilene | 383 | Abilene | 384 |
| Abilene | 385 | Abilene | 386 | Abilene | 387 |
| Abilene | 388 | Abilene | 389 | Abilene | 390 |
| Abilene | 391 | Abilene | 392 | Abilene | 393 |
| Abilene | 394 | Abilene | 395 | Abilene | 396 |
| Abilene | 397 | Abilene | 398 | Abilene | 399 |
| Abilene | 400 | Abilene | 401 | Abilene | 402 |
| Abilene | 403 | Abilene | 404 | Abilene | 405 |
| Abilene | 406 | Abilene | 407 | Abilene | 408 |
| Abilene | 409 | Abilene | 410 | Abilene | 411 |
| Abilene | 412 | Abilene | 413 | Abilene | 414 |
| Abilene | 415 | Abilene | 416 | Abilene | 417 |
| Abilene | 418 | Abilene | 419 | Abilene | 420 |
| Abilene | 421 | Abilene | 422 | Abilene | 423 |
| Abilene | 424 | Abilene | 425 | Abilene | 426 |
| Abilene | 427 | Abilene | 428 | Abilene | 429 |
| Abilene | 430 | Abilene | 431 | Abilene | 432 |
| Abilene | 433 | Abilene | 434 | Abilene | 435 |
| Abilene | 436 | Abilene | 437 | Abilene | 438 |
| Abilene | 439 | Abilene | 440 | Abilene | 441 |
| Abilene | 442 | Abilene | 443 | Abilene | 444 |
| Abilene | 445 | Abilene | 446 | Abilene | 447 |
| Abilene | 448 | Abilene | 449 | Abilene | 450 |
| Abilene | 451 | Abilene | 452 | Abilene | 453 |
| Abilene | 454 | Abilene | 455 | Abilene | 456 |
| Abilene | 457 | Abilene | 458 | Abilene | 459 |
| Abilene | 460 | Abilene | 461 | Abilene | 462 |
| Abilene | 463 | Abilene | 464 | Abilene | 465 |
| Abilene | 466 | Abilene | 467 | Abilene | 468 |
| Abilene | 469 | Abilene | 470 | Abilene | 471 |
| Abilene | 472 | Abilene | 473 | Abilene | 474 |
| Abilene | 475 | Abilene | 476 | Abilene | 477 |
| Abilene | 478 | Abilene | 479 | Abilene | 480 |
| Abilene | 481 | Abilene | 482 | Abilene | 483 |
| Abilene | 484 | Abilene | 485 | Abilene | 486 |
| Abilene | 487 | Abilene | 488 | Abilene | 489 |
| Abilene | 490 | Abilene | 491 | Abilene | 492 |
| Abilene | 493 | Abilene | 494 | Abilene | 495 |
| Abilene | 496 | Abilene | 497 | Abilene | 498 |
| Abilene | 499 | Abilene | 500 | Abilene | 501 |



Administration Building University of Texas



In a Texas Luscious Citrus Grove

TEXAS HIGHWAY DEPARTMENT

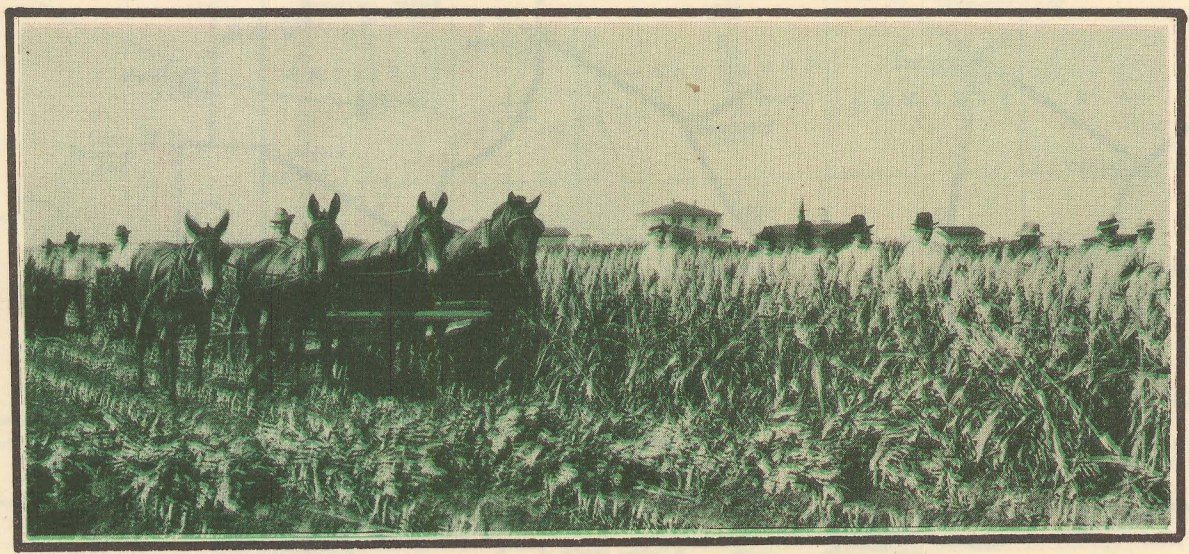
Brady Gentry Commission Chairman
Harry Hines Commission Member
Robert Lee Robbitt Commission Member
Julian Montgomery State Highway Engineer



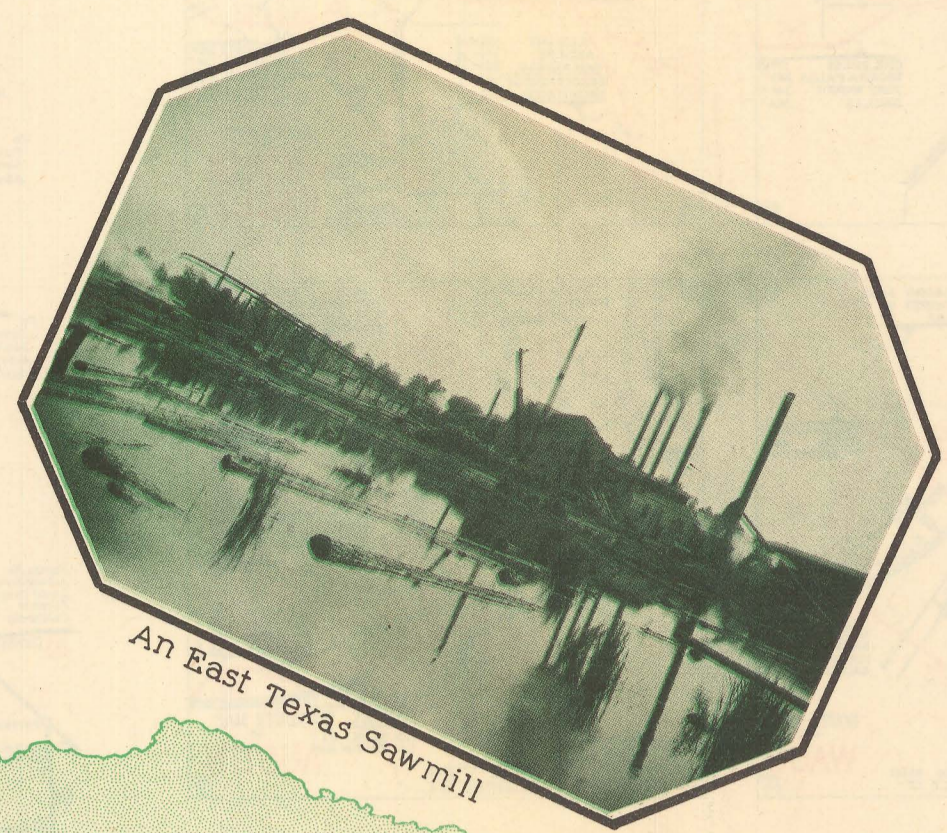
Texas Welcomes Her Visitors



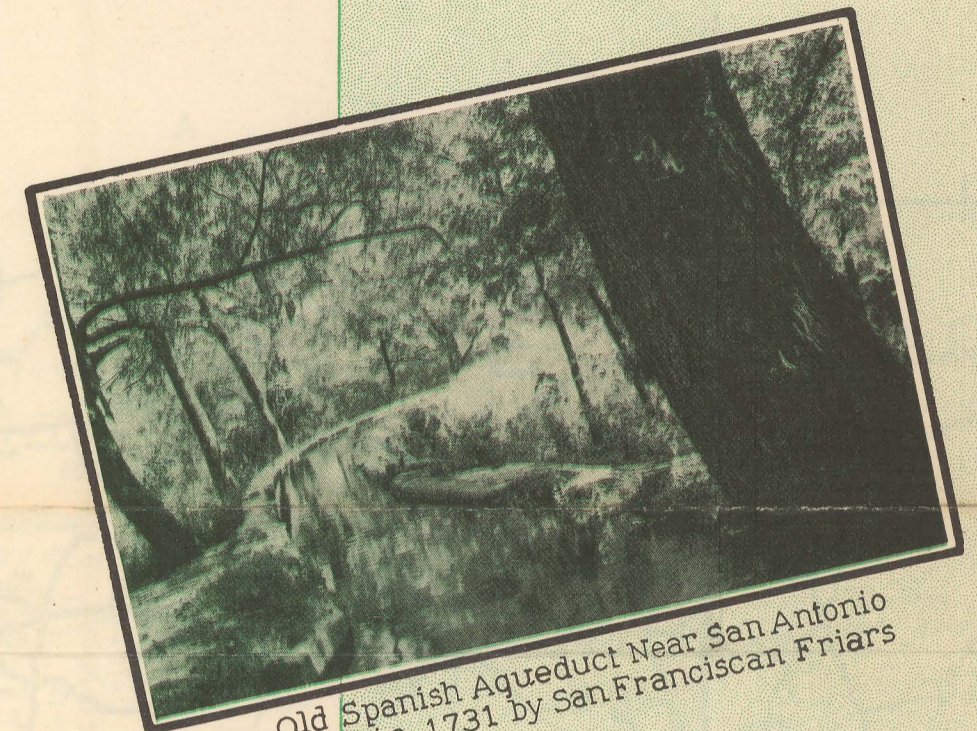
Harvesting Wheat on the Staked Plains



A Typical Farm Scene in North Texas



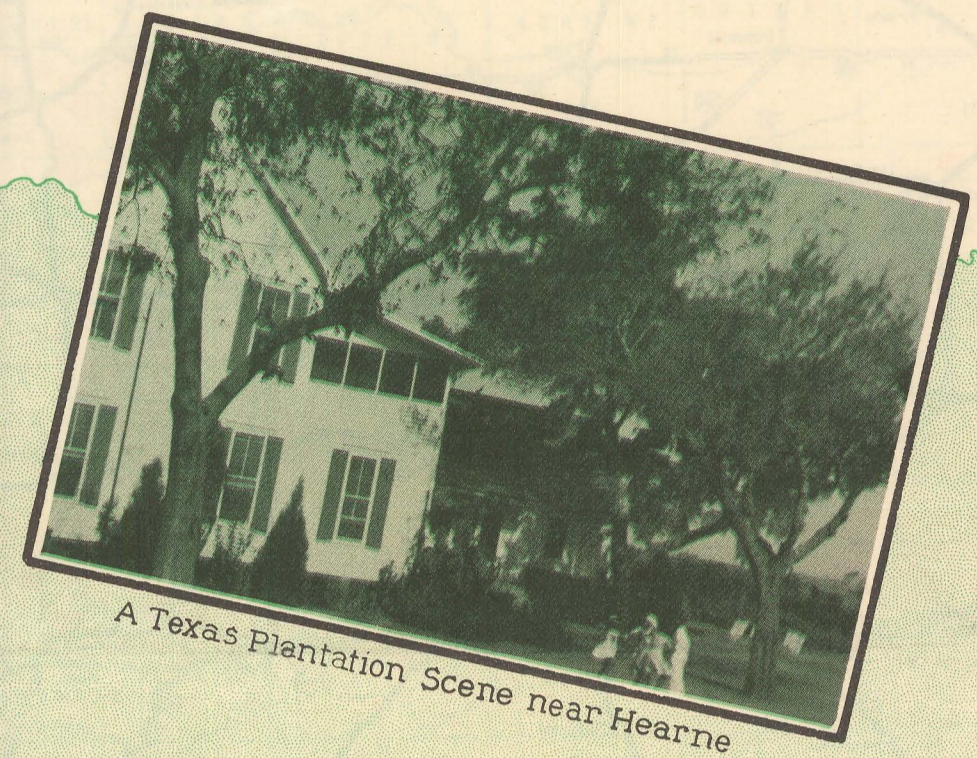
An East Texas Sawmill



Old Spanish Aqueduct Near San Antonio
Built in 1731 by San Franciscan Friars



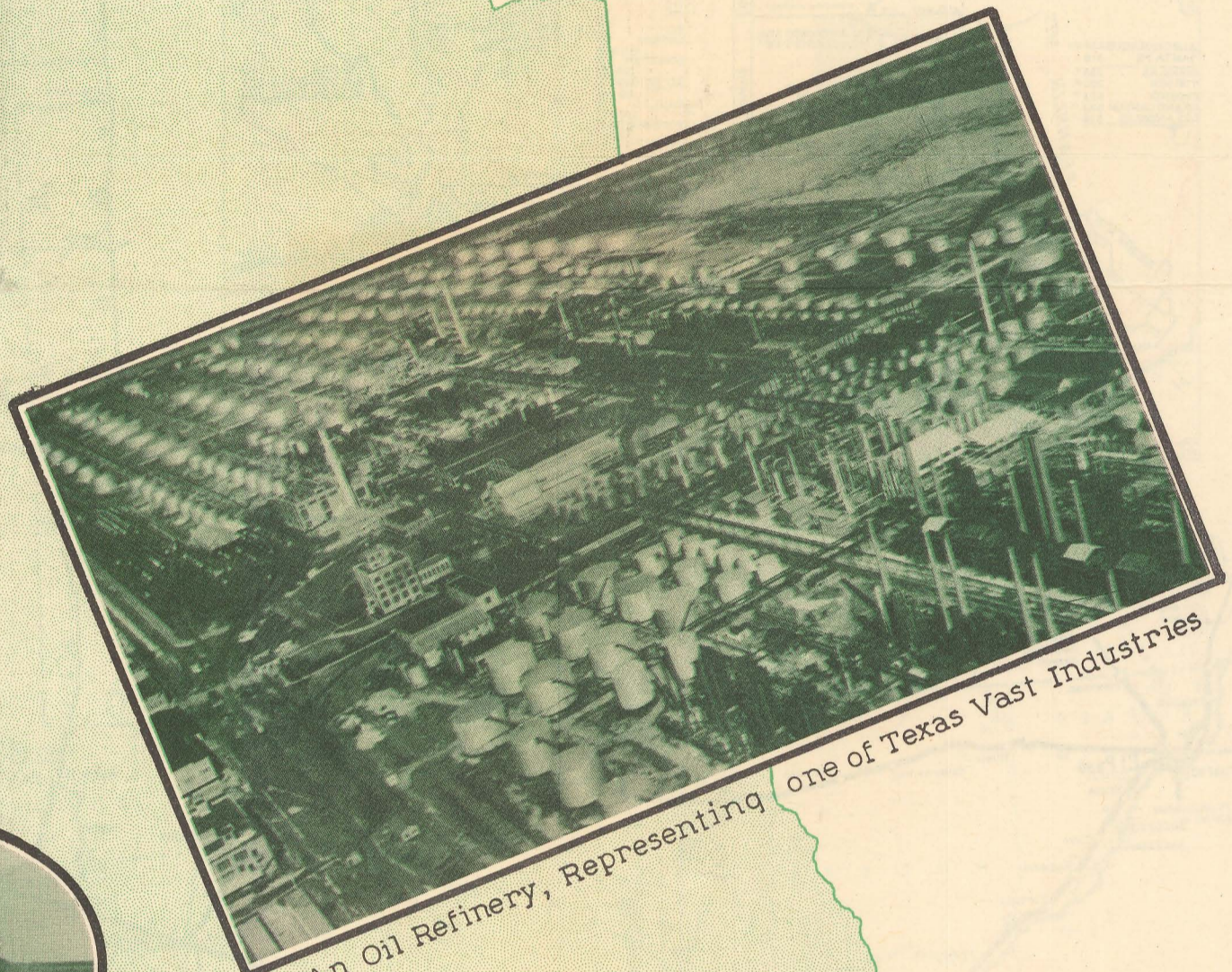
A Typical Texas Spring
Walnut Springs, Hays County



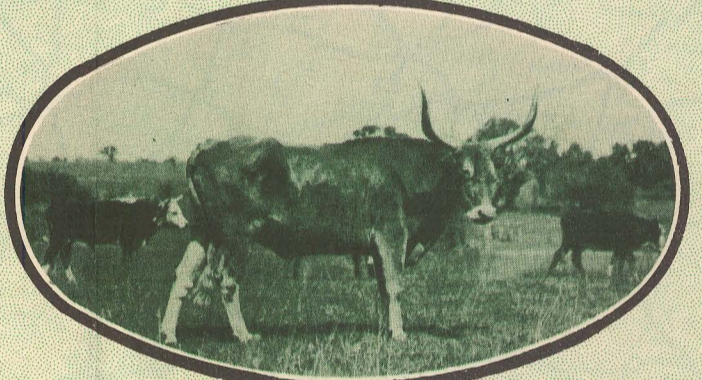
A Texas Plantation Scene near Hearne



A Texas Smelter near El Paso



An Oil Refinery, Representing
one of Texas Vast Industries



A Texas Longhorn



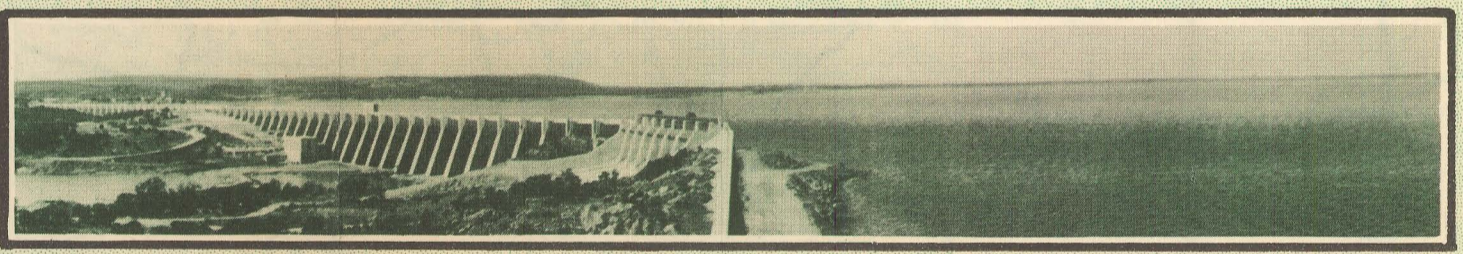
METROPOLITAN TEXAS



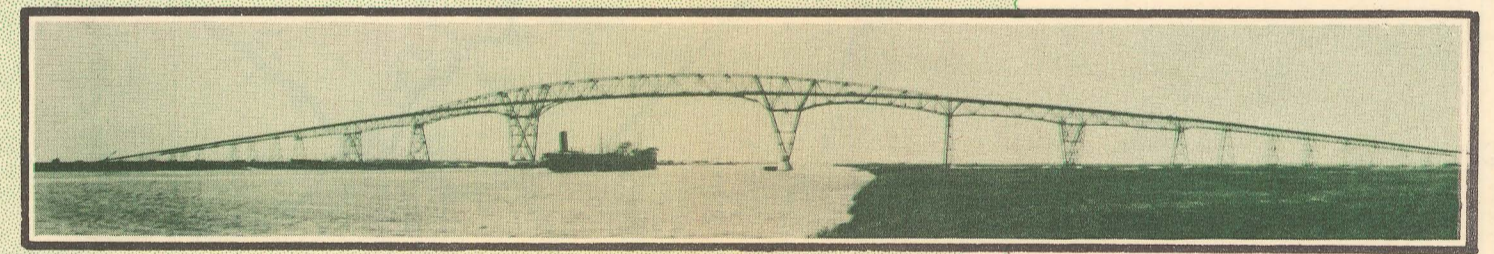
Rice Threshing on the Coastal Plains



A Flock of Sheep, Representing the Wool and Mohair Industries

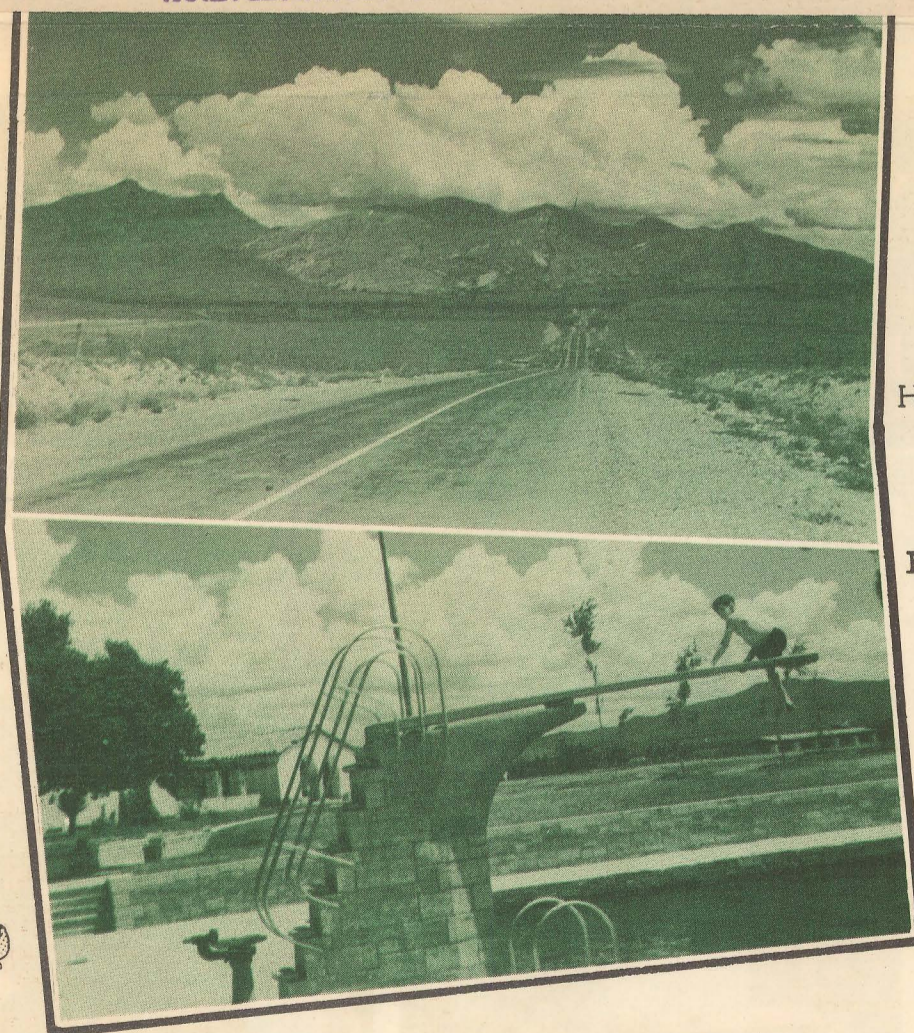


Buchanan Dam and Lake near Austin



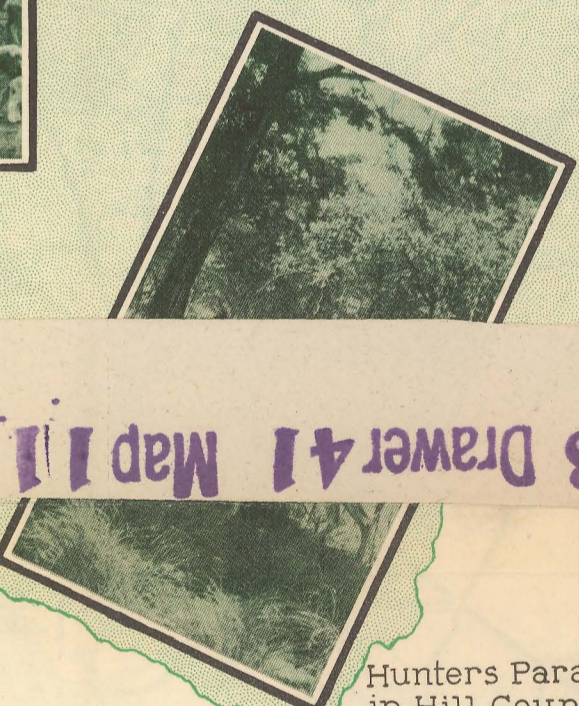
Pt. Arthur-Orange Bridge

1954 TEXAS PUBLIC ROADS ADMINISTRATION MAP LIBRARY Unit 38 Drawer 41 Map 11



Highway Scene, Davis Mountain Area

Balmorhea State Park



Hunters Paradise in Hill Country



Texas Thoroughbreds

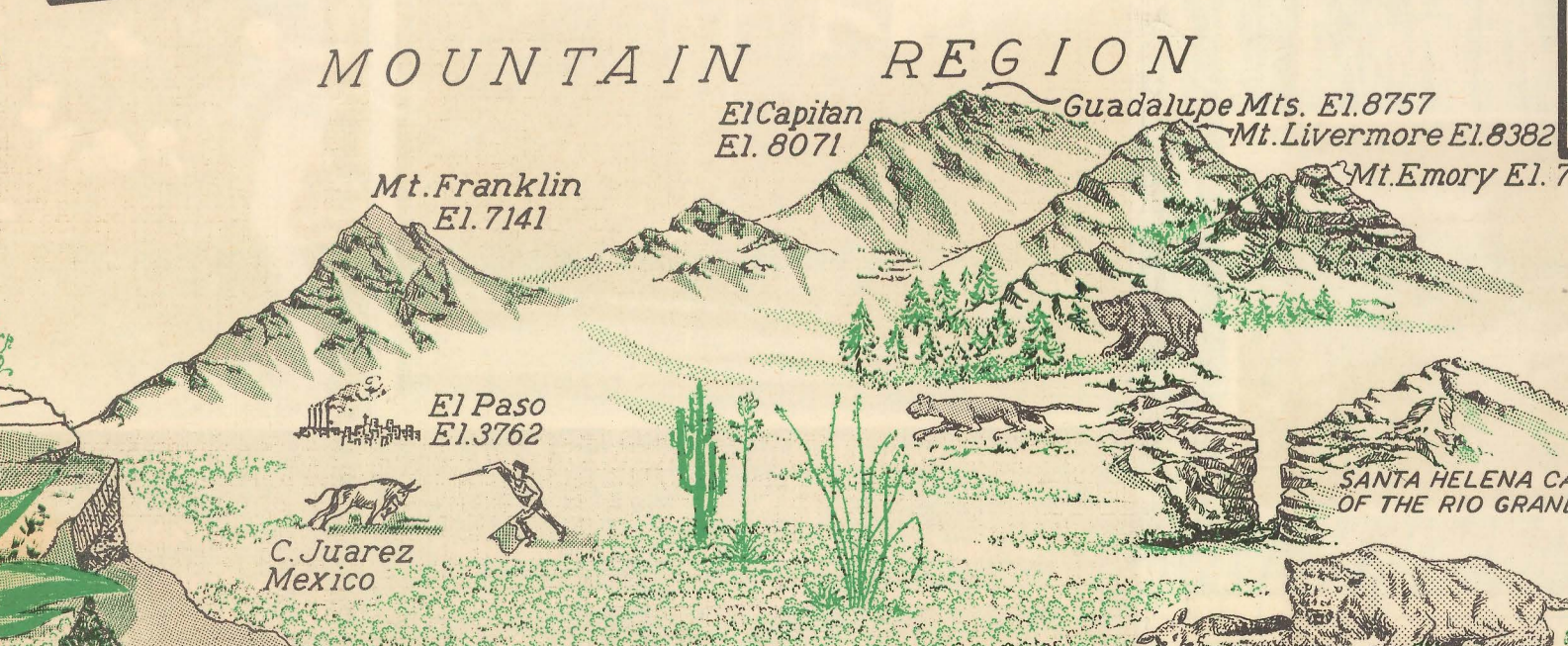


686 pound Sawfish Caught on Rod and Reel



Ocean Liners in a Texas Port

Cotton Shipping to Foreign Market

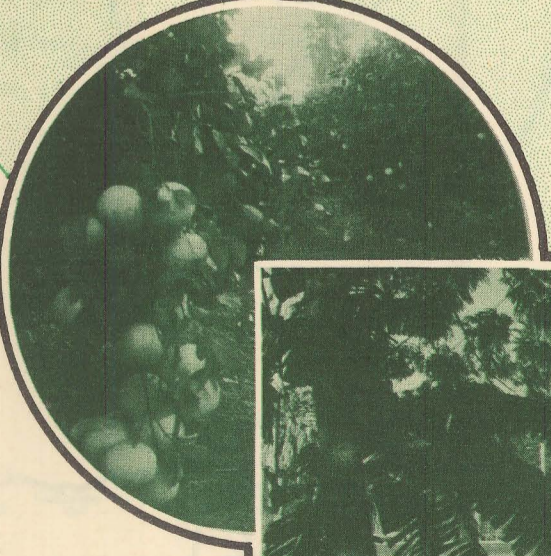


MOUNTAIN REGION

El Capitan El. 8071
Mt. Franklin El. 7141
Guadalupe Mts. El. 8757
Mt. Livermore El. 8382
Mt. Emory El. 7835



Scenes Along the Pan American Highway, Mexico



Tropical Scenes in the Rio Grande Valley

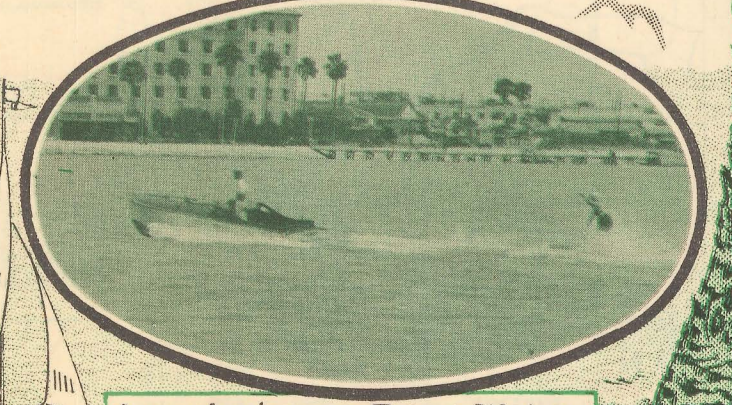
THE "STAKED PLAINS" OF THE PANHANDLE FARMING SECTION

THE HILL COUNTRY

COASTAL PLAINS



Texas Mermaids at Play



Aquaplaning on Texas Waters

