

# ARKANSAS

2009

# TRAFFIC CRASH STATISTICS



Prepared by:  
Arkansas State Police  
Highway Safety Office  
1 State Police Plaza Drive  
Little Rock, AR 72209  
[www.asp.arkansas.gov](http://www.asp.arkansas.gov)

# TABLE OF CONTENTS

## INTRODUCTION

2009 ARKANSAS CRASH SUMMARY.....	3
----------------------------------	---

## FIVE AND TEN YEAR TRENDS

FATAL CRASHES AND RATES.....	4
FATALITIES AND RATES.....	5
FATALITIES BY AGE GROUP, 2005-2009.....	6
NONFATAL INJURIES, RATES AND INJURIES BY SEVERITY.....	7 - 8
TOTAL CRASHES AND RATES.....	9
ALCOHOL RELATED FATALITIES VS. TOTAL FATALITIES.....	10
ALCOHOL/DRUG RELATED FATALITIES VS. TOTAL FATALITIES.....	11
PERCENT ALCOHOL RELATED FATALITIES ARKANSAS VS. NATIONAL....	12
PERCENT ALCOHOL/DRUG RELATED FATALITIES ARKANSAS VS. NATIONAL.....	13
ALCOHOL/DRUG RELATED CRASHES VS. TOTAL CRASHES.....	14
ALCOHOL/DRUG RELATED FATAL CRASHES VS. TOTAL CRASHES.....	15
MOTORCYCLE CRASHES (INCLUDES ATV'S, MOPEDS, ETC.).....	16
RAILROAD CRASHES, FATALITIES AND INJURIES.....	17

## CURRENT YEAR (2009)

FATALITIES BY SAFETY RESTRAINT USAGE PERCENT USED AND NOT USED.....	18
FATALITIES BY SAFETY RESTRAINT USAGE BY AGE GROUP.....	19
FATALITIES BY SAFETY RESTRAINT USAGE BY AGE.....	20
FATALITIES BY AGE AND PERSON TYPE.....	21
ALCOHOL RELATED FATALITIES BY AGE AND PERSON TYPE.....	22
FATAL CRASHES AND FATALITIES BY MONTH.....	23
CRASHES BY TIME OF DAY AND DAY OF WEEK.....	24
ALCOHOL/DRUG RELATED CRASHES BY TIME OF DAY AND DAY OF WEEK.....	25
FATAL CRASHES BY TIME OF DAY AND DAY OF WEEK.....	26
ALCOHOL/DRUG RELATED FATAL CRASHES BY TIME OF DAY AND DAY OF WEEK.....	27

# TABLE OF CONTENTS (CONT.)

## CURRENT YEAR (CONT.)

CRASHES BY LIGHTING CONDITIONS.....	28
CRASHES BY ROAD SURFACE CONDITIONS.....	29
CRASHES BY ROAD SYSTEM.....	30
CRASH RATES BY ROAD SYSTEM.....	31
CRASHES BY RURAL/URBAN LOCATION.....	32
CRASHES BY INVESTIGATING AGENCY.....	33
CRASHES BY TYPE OF COLLISION .....	34
VEHICLES INVOLVED BY FIRST HARMFUL EVENT .....	35
DRIVERS BY OPERATOR FACTOR .....	36
DRIVERS IN ALCOHOL/DRUG RELATED CRASHES BY OPERATOR FACTOR .	37
NON-MOTORIST FATALITIES.....	38 - 39
ARKANSAS' 20 LARGEST CITIES BY POPULATION - CRASHES, FATALITIES AND INJURIES.....	40
ARKANSAS' 20 LARGEST CITIES BY POPULATION - ALCOHOL/DRUG RELATED CRASHES, FATALITIES AND INJURIES.....	41
<b>COUNTY BREAKDOWNS</b>	
TOTAL CRASHES, FATALITIES AND INJURIES BY COUNTY.....	42 - 43
ALCOHOL/DRUG RELATED CRASHES, FATALITIES AND INJURIES BY COUNTY.....	44 - 45
FATALITIES VS. ALCOHOL/DRUG RELATED FATALITIES BY COUNTY.....	46

# 2009 ARKANSAS CRASH SUMMARY

- **On all public roads in Arkansas during 2009 there were:**

62,808 total crashes reported, a 0.5% decrease from 2008

529 fatal crashes reported, a 4.2% decrease from 2008

592 fatalities reported, a 1.3% decrease from 2008

262 alcohol/drug related fatalities, an 1.1% decrease from 2008

32.5 billion vehicle miles traveled, the same as in 2008

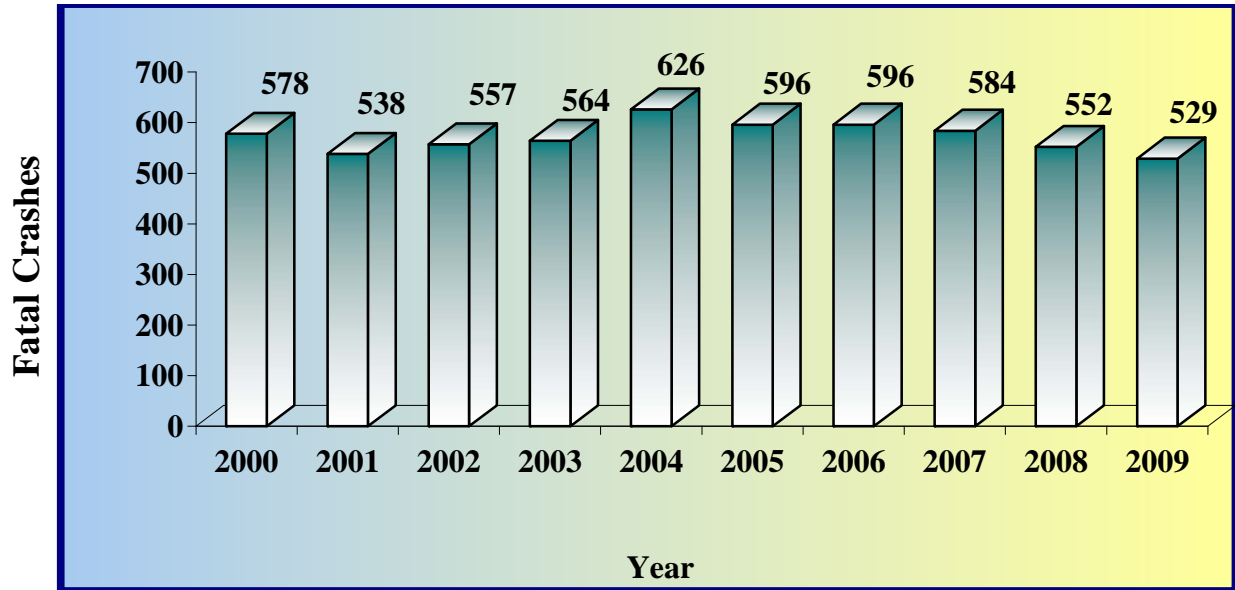
- **The fatality rate remained the same at 1.8 fatalities per 100 MVM\* traveled.**
- **The fatal crash rate decreased from 1.7 in 2008 to 1.6 crashes per 100 MVM\* traveled.**

\* Million vehicle miles

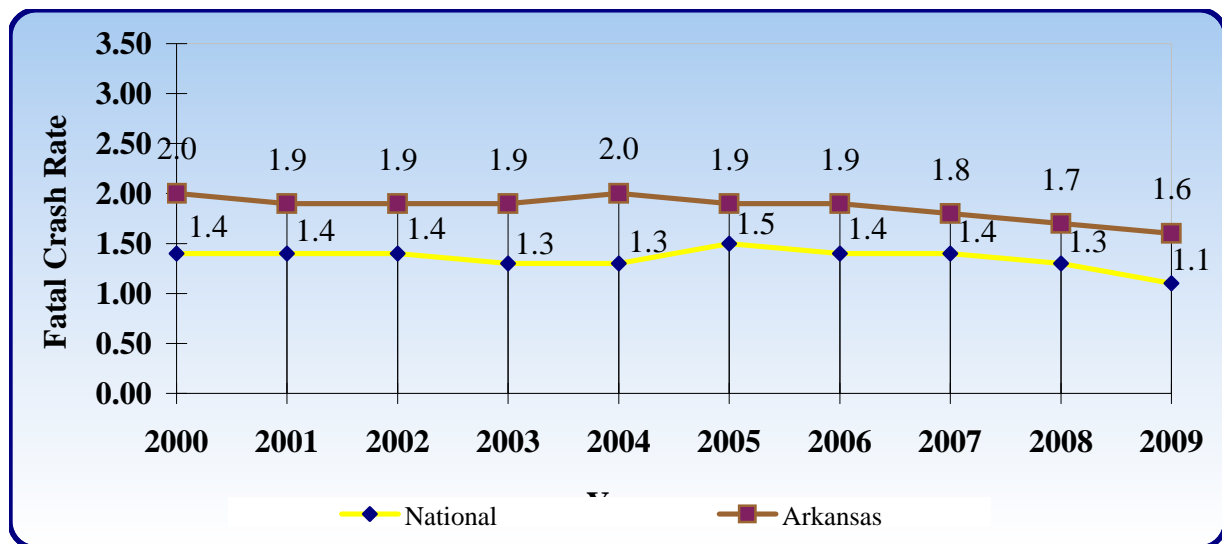
# FATAL CRASHES AND RATES

## 10 YEAR TRENDS

### STATEWIDE FATAL CRASHES



### FATAL CRASH RATE (FATAL CRASHES PER 100 MVM\*)

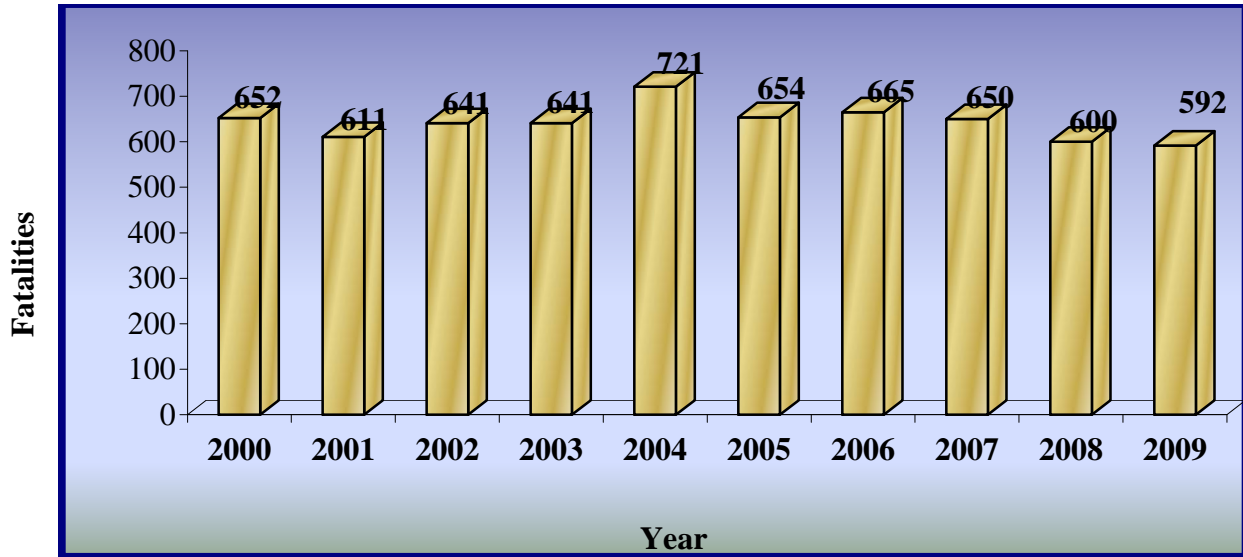


\* Million vehicle miles

# FATALITIES AND RATES

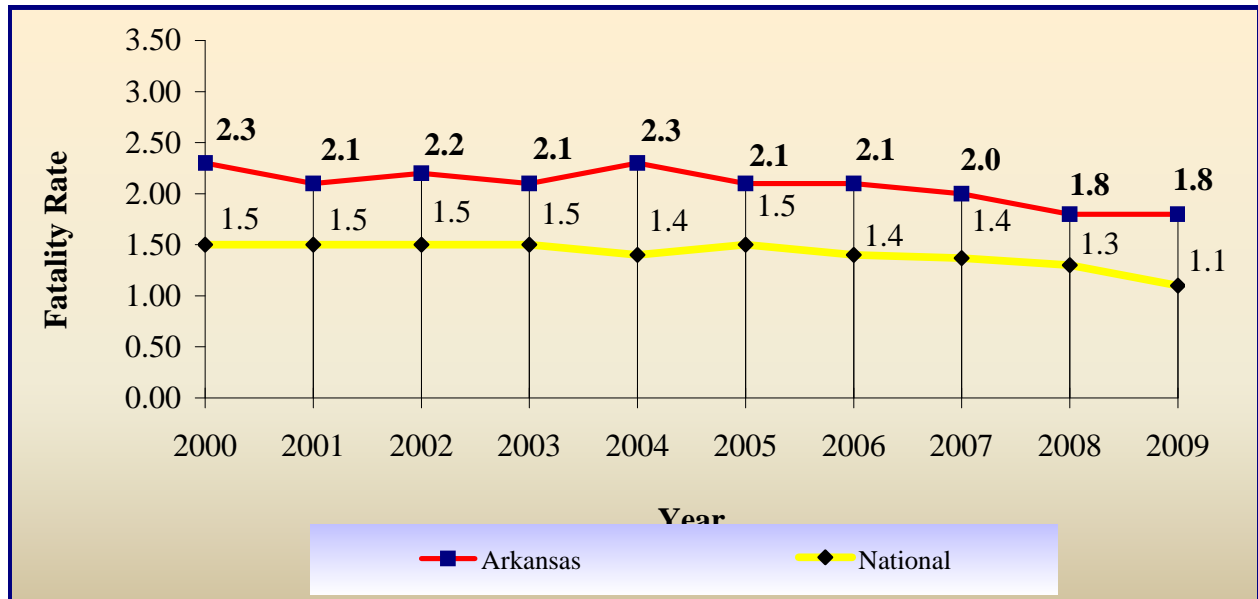
## 10 YEAR TRENDS

### STATEWIDE FATALITIES



### FATALITY RATE (FATALITIES PER 100 MVM\*)

#### ARKANSAS FATALITY RATE (FATALITIES PER 100 MVM\*)

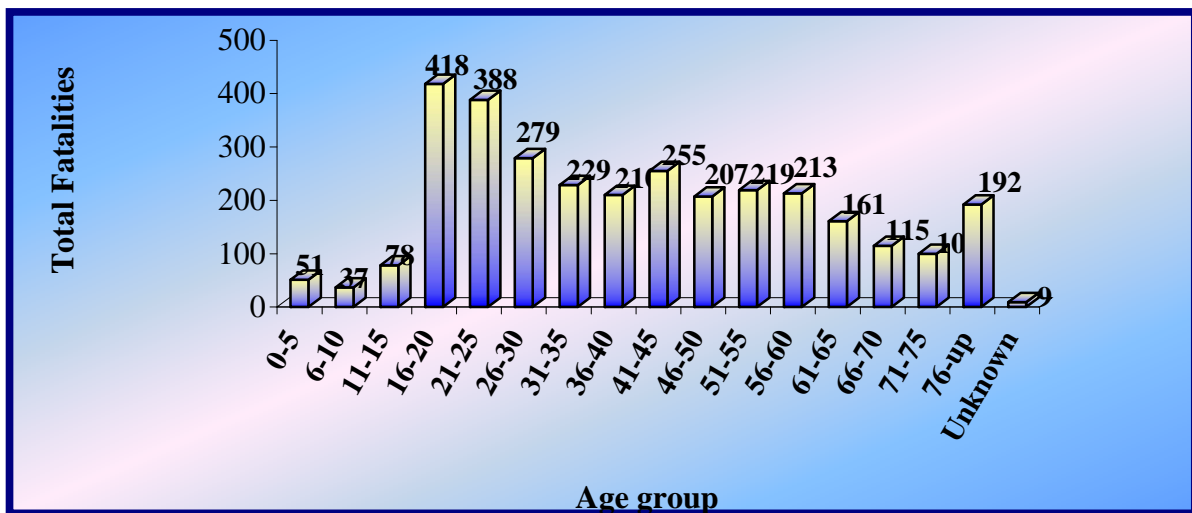


\* Million vehicle miles

# FATALITIES BY AGE GROUP, 2005-2009

## 5 YEAR TRENDS

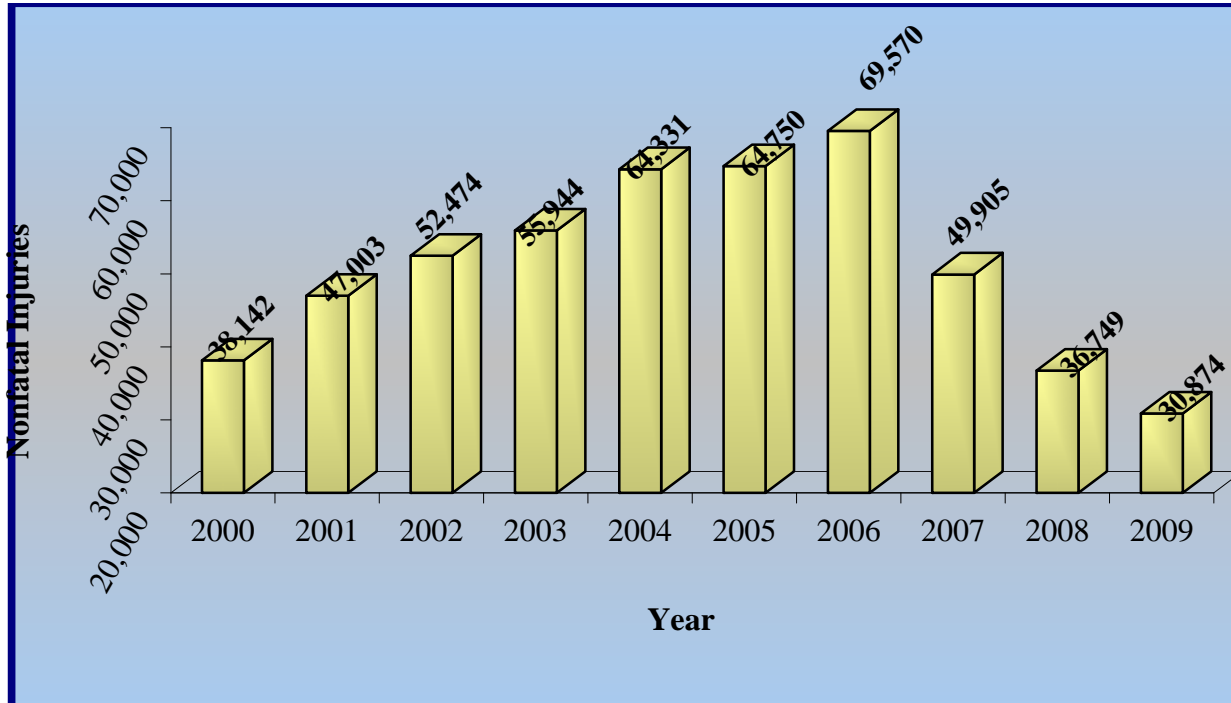
Age Group	2005	2006	2007	2008	2009	Total Fatalities
0-5	10	17	8	9	7	51
6-10	5	9	7	5	11	37
11-15	15	14	15	15	19	78
16-20	86	97	92	84	59	418
21-25	87	88	81	74	58	388
26-30	51	61	56	58	53	279
31-35	54	54	42	38	41	229
36-40	41	50	36	39	44	210
41-45	44	61	46	50	54	255
46-50	42	31	49	46	39	207
51-55	42	42	46	34	55	219
56-60	40	43	51	37	42	213
61-65	33	29	36	32	31	161
66-70	30	18	17	22	28	115
71-75	23	17	17	22	21	100
76-up	49	33	45	35	30	192
Unknown	2	1	6	0	0	9
<b>Total</b>	<b>654</b>	<b>665</b>	<b>650</b>	<b>600</b>	<b>592</b>	<b>3,161</b>



# NONFATAL INJURIES AND RATES

## 10 YEAR TRENDS

### STATEWIDE NONFATAL INJURIES



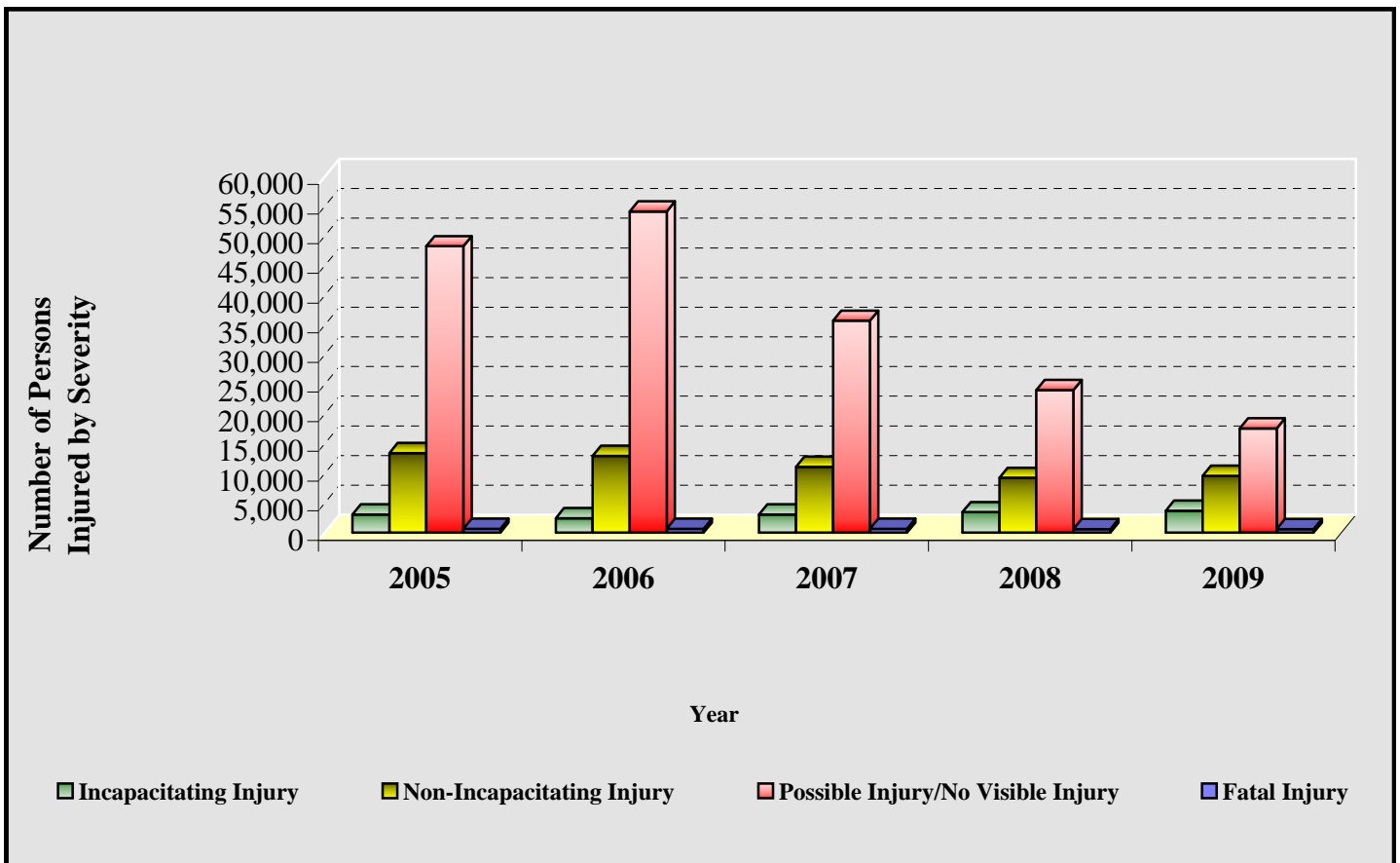
\* Million vehicle miles



# PERSONS INVOLVED IN CRASHES BY INJURY SEVERITY

## 5 YEAR TREND

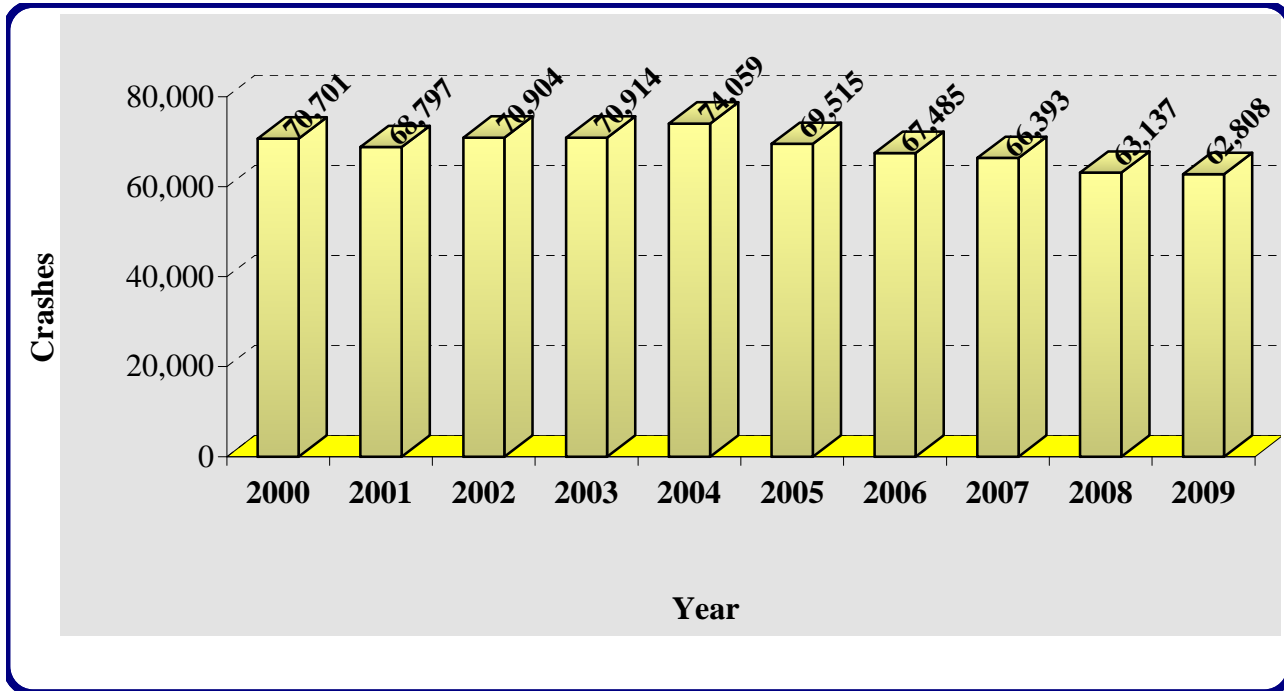
Injury Description	Number of Persons				
	2005	2006	2007	2008	2009
Fatal Injury	654	665	650	600	592
Incapacitating Injury	3,059	2,461	3,072	3,471	3,693
Non-Incapacitating Injury	13,414	12,953	11,104	9,252	9,599
Possible Injury/No Visible Injury	48,277	54,156	35,729	24,026	17,582
No Injury/Property Damage Only	118,396	106,378	122,020	125,745	130,653



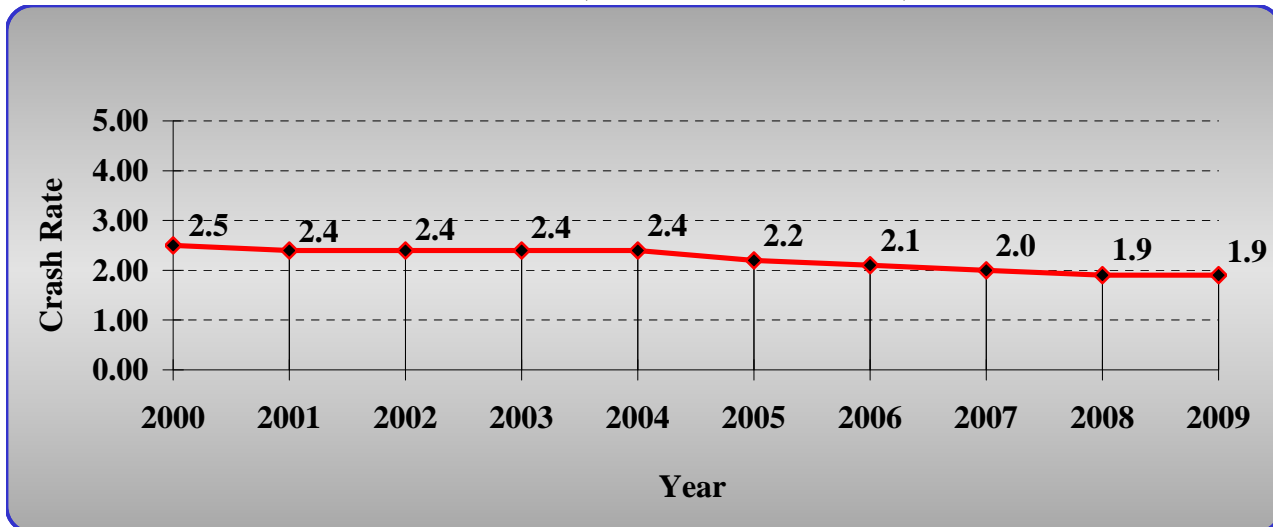
# TOTAL CRASHES AND RATES

## 10 YEAR TRENDS

### STATEWIDE CRASHES



### CRASH RATE (CRASHES PER MVM\*)



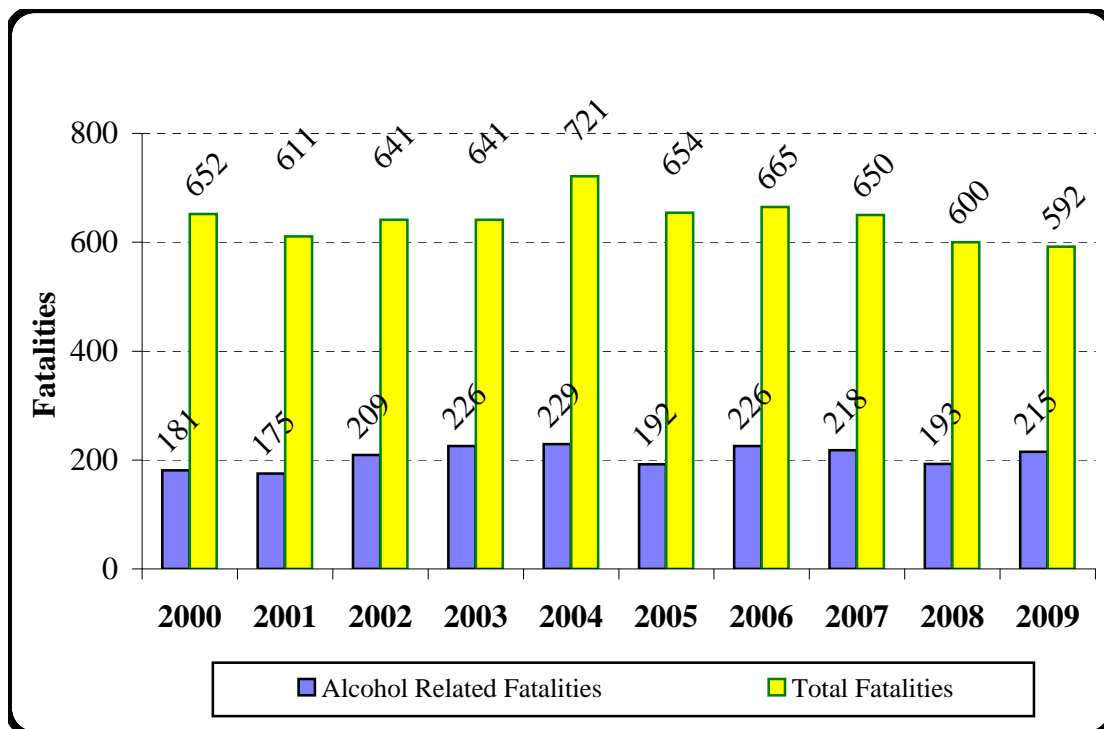
\* Million vehicle miles

# ALCOHOL RELATED FATALITIES VS. TOTAL FATALITIES

## 10 YEAR TRENDS

Year	Alcohol Related Fatalities	Total Fatalities	Alcohol Fatalities as a % of Total
2000	181	652	28%
2001	175	611	29%
2002	209	641	33%
2003	226	641	35%
2004	229	721	32%
2005	192	654	29%
2006	226	665	34%
2007	218	650	34%
2008	193	600	32%
2009	215	592	36%

Note: All alcohol related numbers from Fatality Analysis Reporting System (FARS).



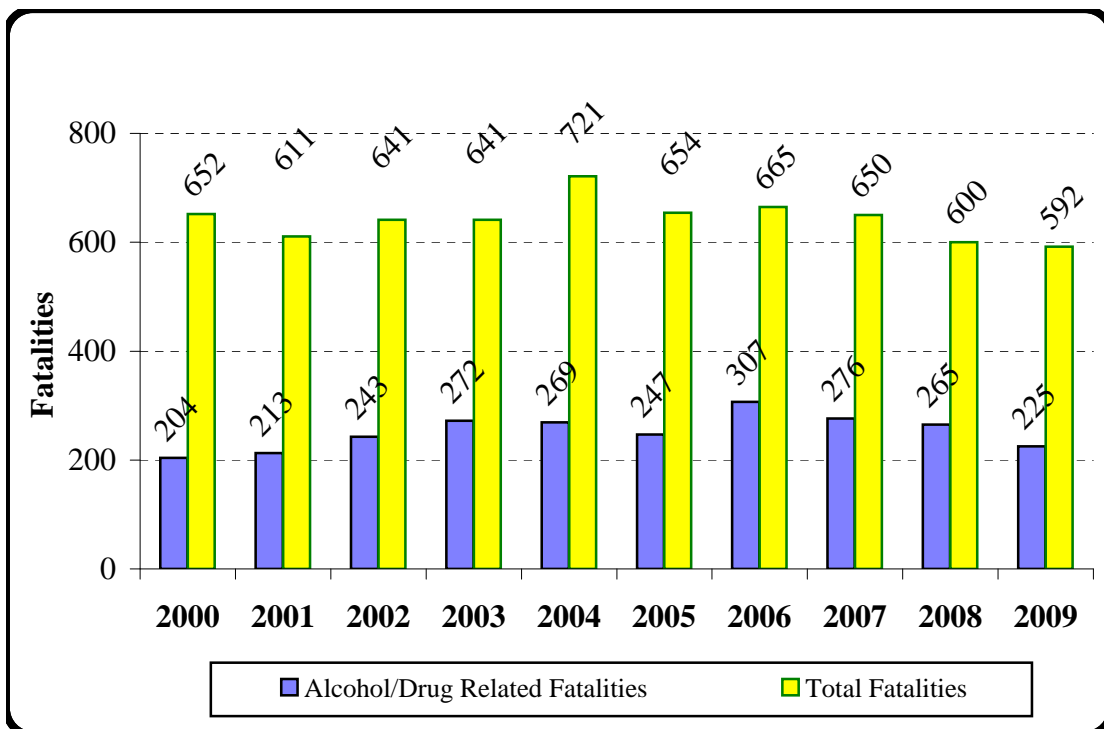
Source: NHTSA/FARS - Using the .08+ definition

# ALCOHOL/DRUG RELATED FATALITIES VS. TOTAL FATALITIES

## 10 YEAR TRENDS

Year	Alcohol/Drug Related Fatalities	Total Fatalities	Alcohol/Drug Fatalities as a % of Total
2000	204	652	31%
2001	213	611	35%
2002	243	641	38%
2003	272	641	42%
2004	269	721	37%
2005	247	654	38%
2006	307	665	46%
2007	276	650	42%
2008	265	600	44%
2009	225	592	38%

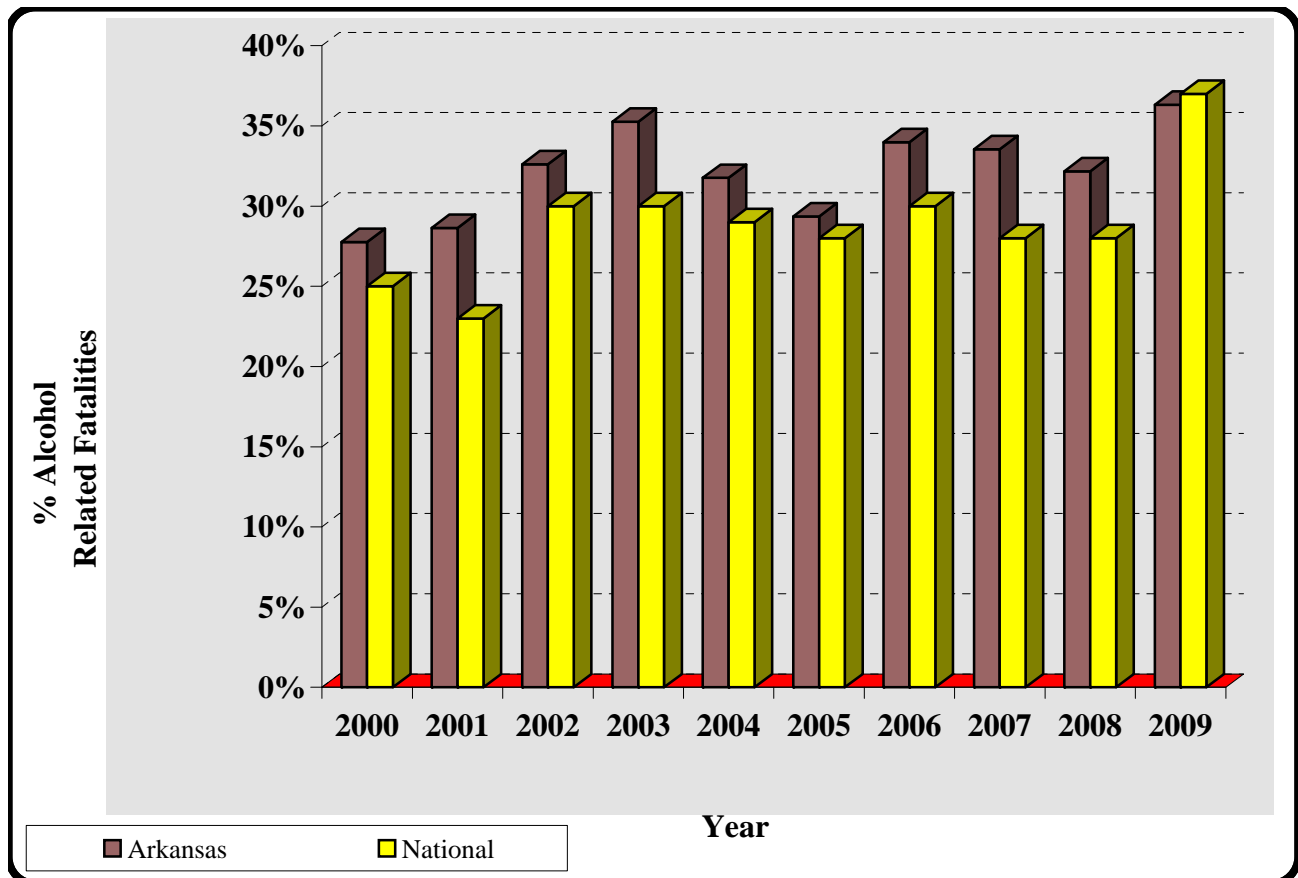
Note: All numbers from Fatality Analysis Reporting System (FARS).



# PERCENT ALCOHOL RELATED FATALITIES ARKANSAS VS. NATIONAL

## 10 YEAR TRENDS

Year	Arkansas	National
2000	28%	25%
2001	29%	23%
2002	33%	30%
2003	35%	30%
2004	32%	29%
2005	29%	28%
2006	34%	30%
2007	34%	28%
2008	32%	28%
2009	36%	37%



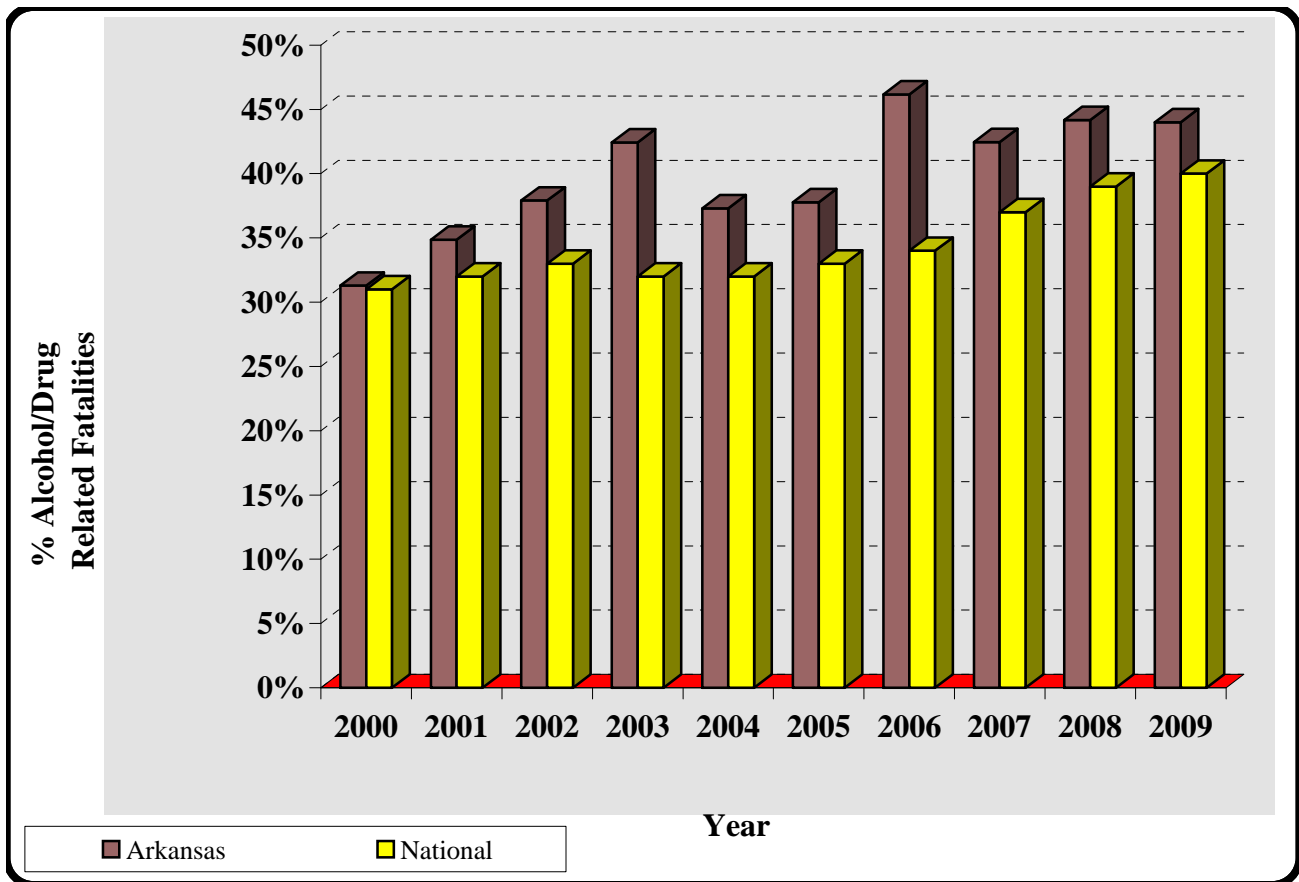
Source: NHTSA/FARS - Using the .08+ definition

# PERCENT ALCOHOL/DRUG RELATED FATALITIES ARKANSAS VS. NATIONAL

## 10 YEAR TRENDS

Year	Arkansas	National
2000	31%	31%
2001	35%	32%
2002	38%	33%
2003	42%	32%
2004	37%	32%
2005	38%	33%
2006	46%	34%
2007	42%	37%
2008	44%	39%
2009	44%	40%

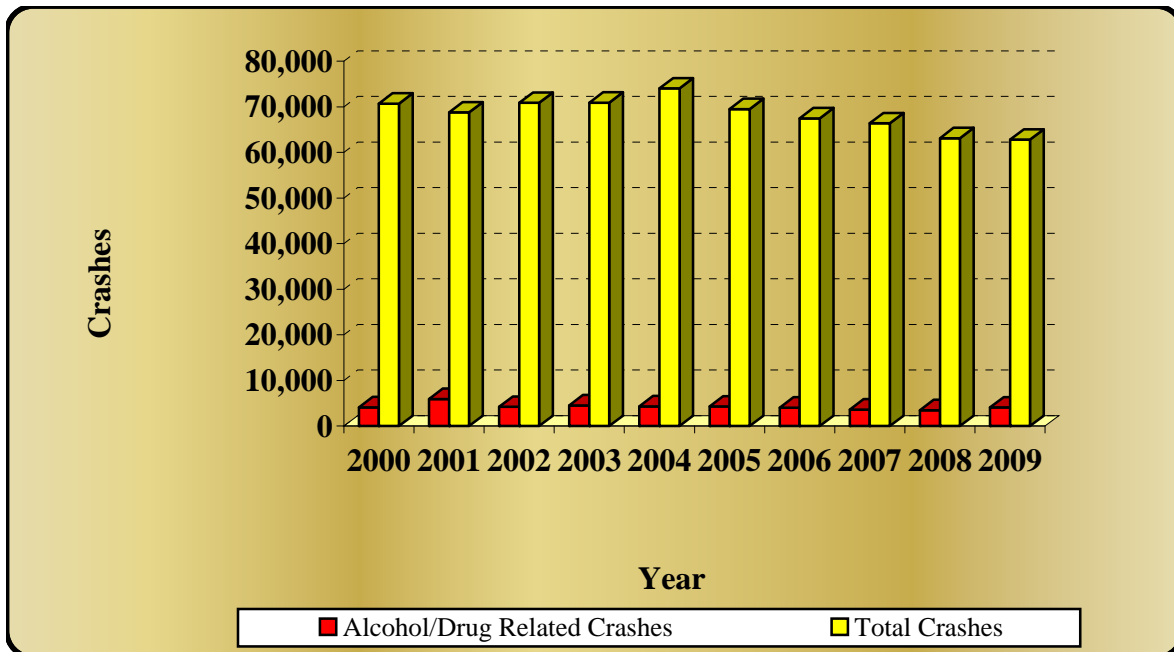
Note: All National numbers from Fatality Analysis Reporting System (FARS)



# ALCOHOL/DRUG RELATED CRASHES VS. TOTAL CRASHES

## 10 YEAR TRENDS

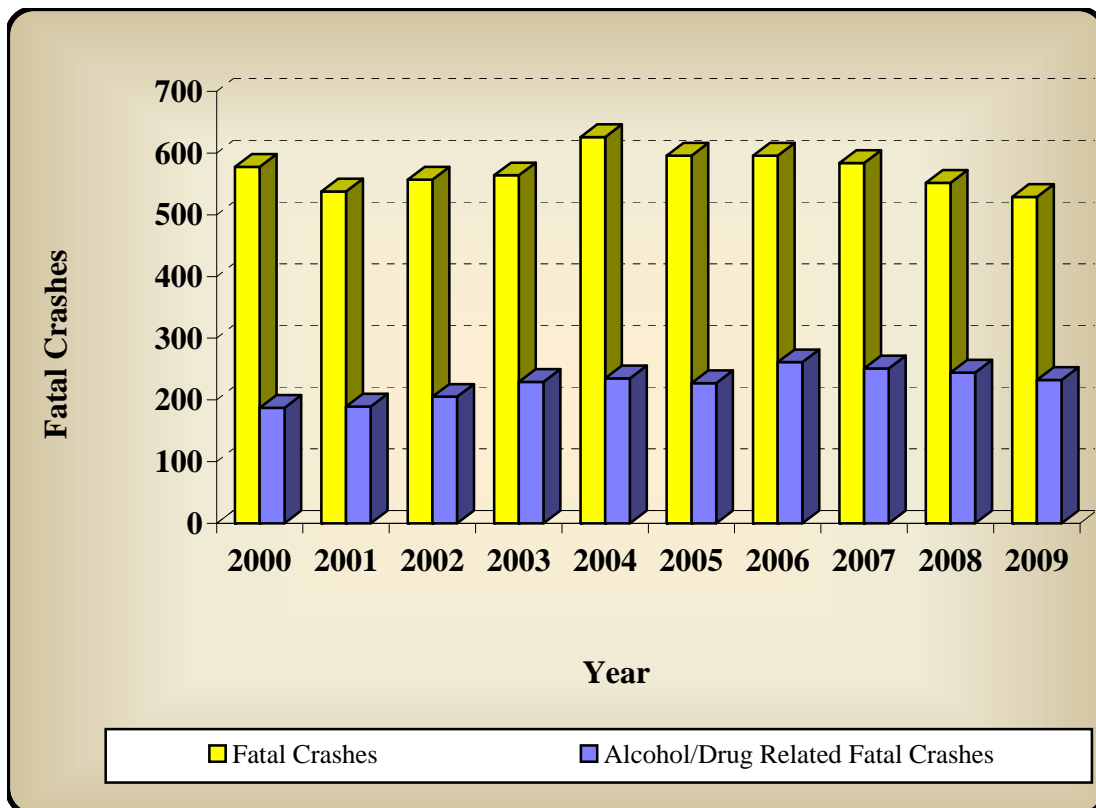
Year	Alcohol/Drug Related Crashes	Total Crashes	Alcohol/Drug as a % of Total Crashes
2000	4,097	70,701	6%
2001	5,912	68,797	9%
2002	4,203	70,904	6%
2003	4,503	70,914	6%
2004	4,293	74,059	6%
2005	4,266	69,515	6%
2006	4,029	67,485	6%
2007	3,604	66,393	5%
2008	3,469	63,137	5%
2009	4,047	62,808	6%



# ALCOHOL/DRUG RELATED FATAL CRASHES VS. TOTAL FATAL CRASHES

10 YEAR TRENDS

Year	Alcohol/Drug Related Fatal Crashes	Fatal Crashes	Alcohol/Drug Fatal Crashes as a % of Total
2000	187	578	32%
2001	189	538	35%
2002	205	557	37%
2003	229	564	41%
2004	235	626	38%
2005	227	596	38%
2006	261	596	44%
2007	251	584	43%
2008	244	552	44%
2009	232	529	44%



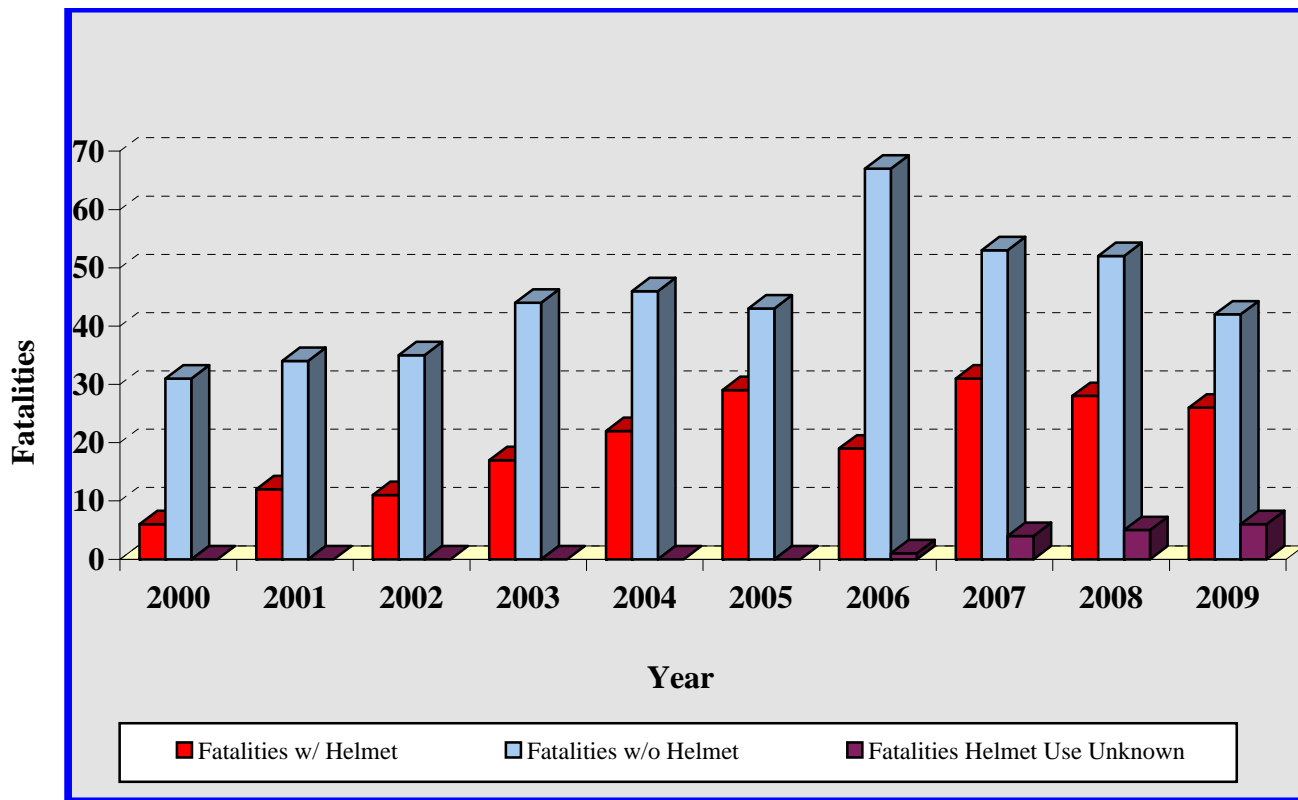


# MOTORCYCLE CRASHES

(Includes ATVs, Moped, etc.)

## 10 YEAR TRENDS

Year	Total Crashes	Non Fatal Injuries	Fatal Crashes	Total Fatalities	Fatalities w/ Helmet	Fatalities w/o Helmet	Fatalities Helmet Use Unknown
2000	871	744	37	37	6	31	0
2001	1,032	919	41	46	12	34	0
2002	1,041	979	46	46	11	35	0
2003	1,117	1,002	57	61	17	44	0
2004	1,403	1,360	66	68	22	46	0
2005	1,706	1,590	72	72	29	43	0
2006	1,698	1,584	83	87	19	67	1
2007	1,776	1,597	87	88	31	53	4
2008	1,913	1,665	80	85	28	52	5
2009	1,585	1,333	70	74	26	42	6

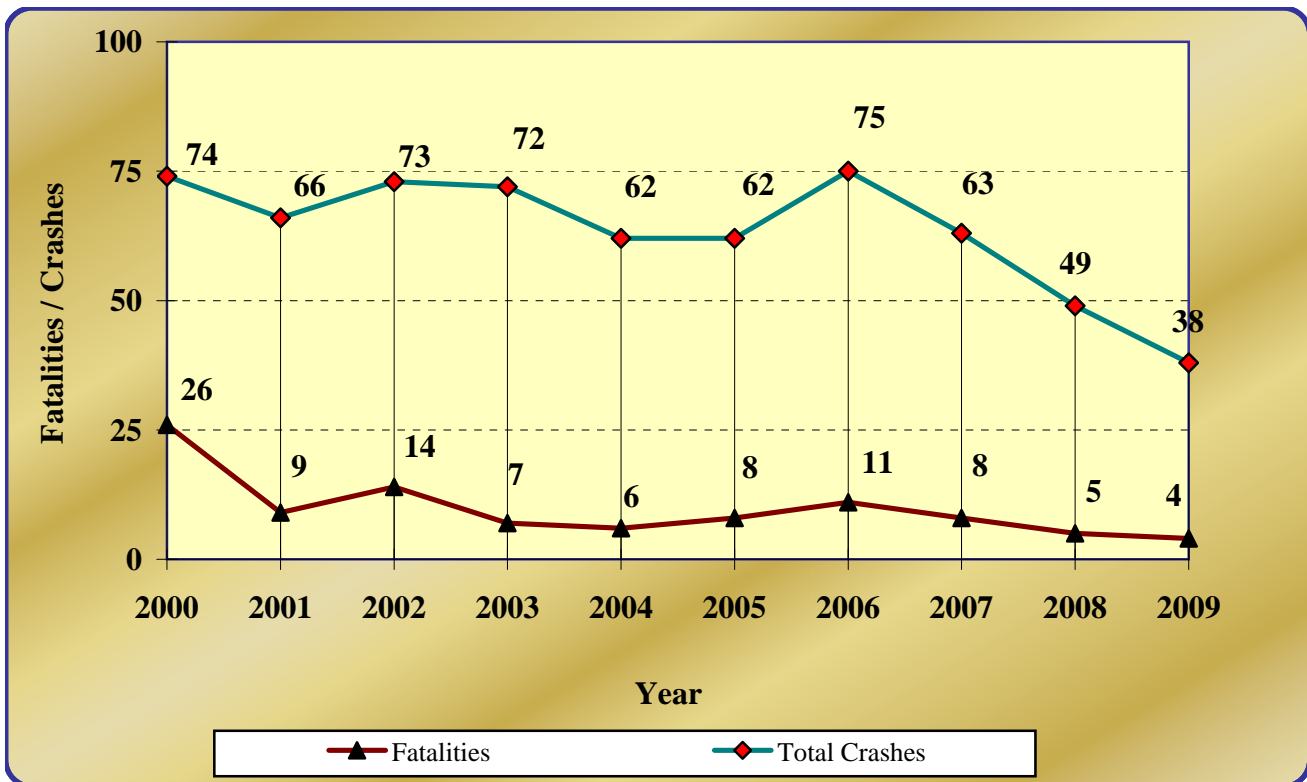


# RAILROAD CRASHES, FATALITIES AND INJURIES

## 10 YEAR TRENDS

Year	Fatal Crashes	Nonfatal Injury Crashes	P.D.O. * Crashes	Total Crashes	Fatalities	Nonfatal Injuries
2000	17	21	36	74	26	36
2001	9	25	32	66	9	36
2002	13	30	30	73	14	42
2003	5	32	35	72	7	41
2004	6	25	31	62	6	33
2005	6	26	30	62	8	37
2006	11	30	34	75	11	45
2007	7	28	28	63	8	37
2008	4	17	28	49	5	21
2009	4	15	19	38	4	30

\* Property Damage Only

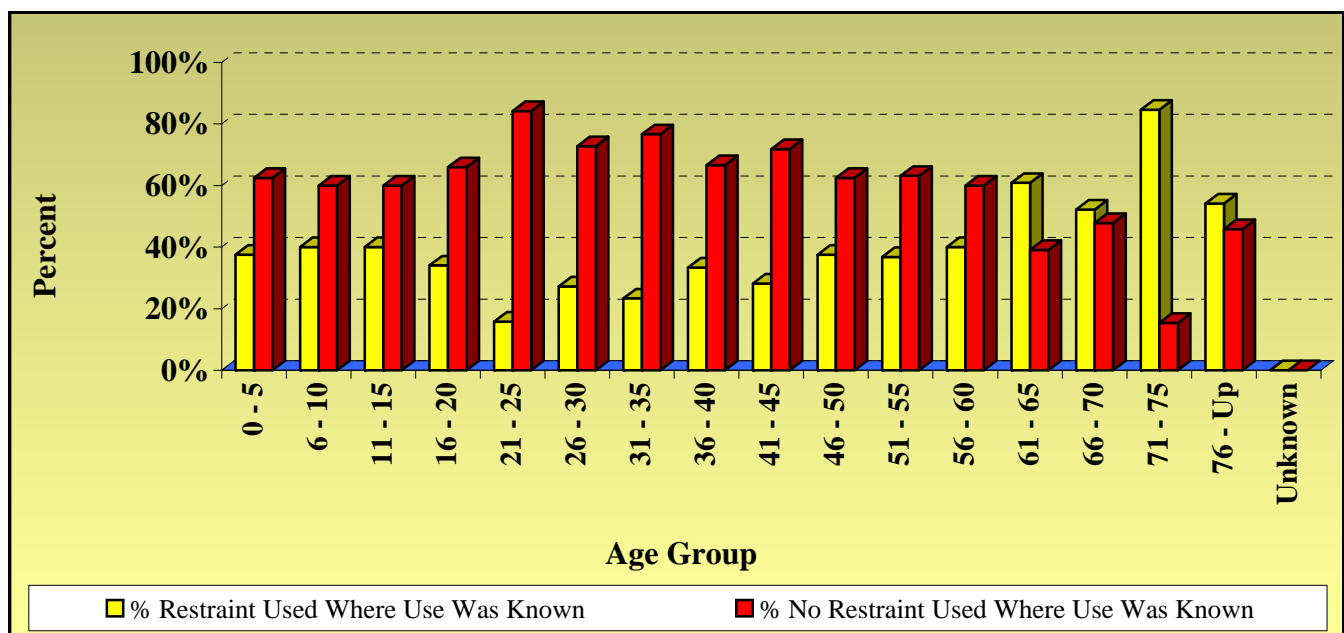


# FATALITIES BY SAFETY RESTRAINT USAGE, PERCENT USED AND NOT USED

(Non-Motorist and Motorcycle Fatalities not included)

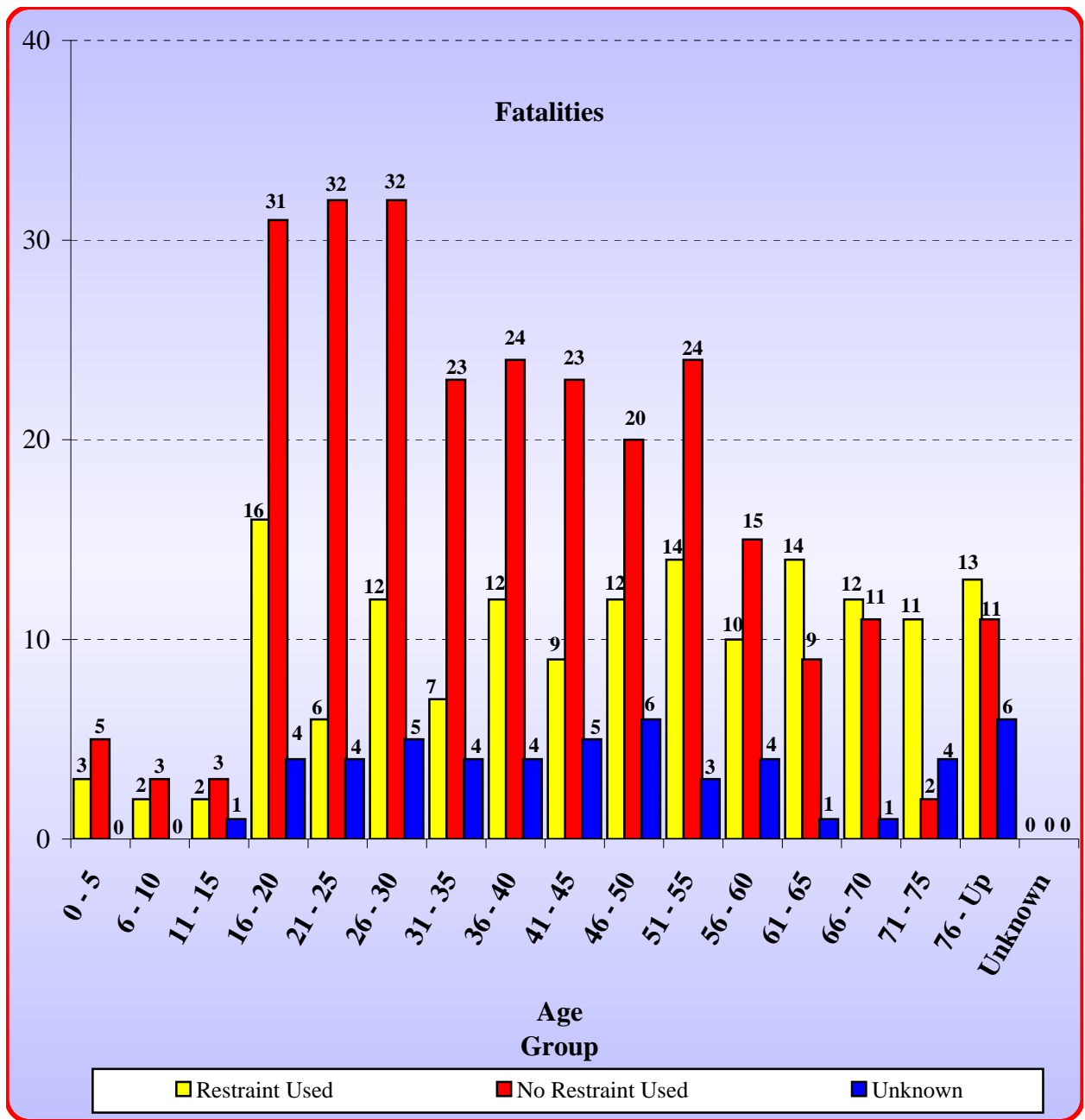
Age Group	Restraint Used	No Restraint Used	Unknown	% Restraint Used *	% No Restraint Used *
0 - 5	3	5	0	38%	63%
6 - 10	2	3	0	40%	60%
11 - 15	2	3	1	40%	60%
16 - 20	16	31	4	34%	66%
21 - 25	6	32	4	16%	84%
26 - 30	12	32	5	27%	73%
31 - 35	7	23	4	23%	77%
36 - 40	12	24	4	33%	67%
41 - 45	9	23	5	28%	72%
46 - 50	12	20	6	38%	63%
51 - 55	14	24	3	37%	63%
56 - 60	10	15	4	40%	60%
61 - 65	14	9	1	61%	39%
66 - 70	12	11	1	52%	48%
71 - 75	11	2	4	85%	15%
76 - Up	13	11	6	54%	46%
Unknown	0	0	0	0%	0%
<b>Total</b>	<b>155</b>	<b>268</b>	<b>52</b>	<b>37%</b>	<b>63%</b>

\* Percentage calculated using only fatalities where restraint use was known.



# FATALITIES BY SAFETY RESTRAINT USAGE BY AGE GROUP

(Motorcyclists and non-motorists not included.)



# FATALITIES BY SAFETY RESTRAINT BY AGE

(Motorcyclists and non-motorists are excluded.)

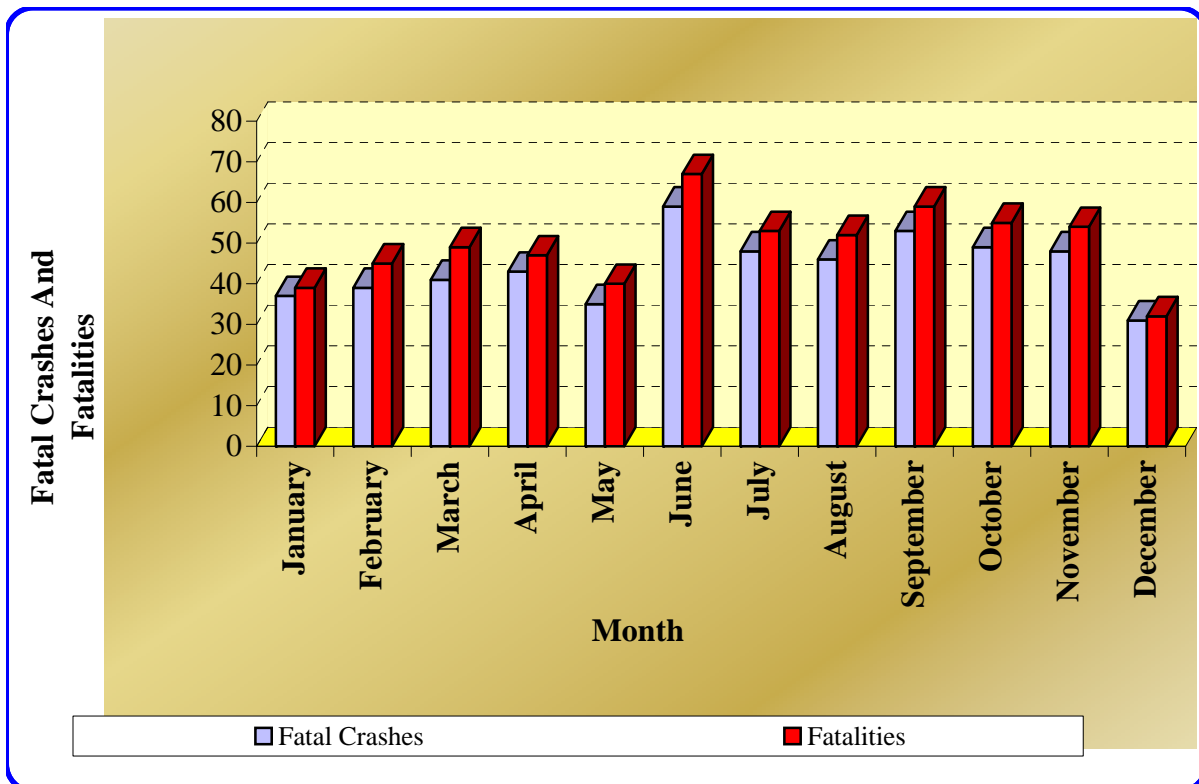
Age	None Used	Child Safety Seat	Lap And/Or Shoulder Belt	Unknown	Age	None Used	Child Safety Seat	Lap And/Or Shoulder Belt	Unknown
1	3	0	0	0	46	3	0	3	1
2	0	1	0	0	47	1	0	2	0
3	1	0	0	0	48	2	0	1	4
4	0	1	0	0	49	10	0	6	0
5	1	1	0	0	50	4	0	0	1
6	0	0	1	0	51	7	0	2	2
8	1	0	0	0	52	4	0	6	1
9	1	0	1	0	53	6	0	2	0
10	1	0	0	0	54	6	0	2	0
12	1	0	0	0	55	1	0	2	0
13	1	0	0	1	56	6	0	1	1
14	0	0	2	0	57	3	0	2	1
15	1	0	0	0	59	3	0	6	1
16	4	0	1	1	60	3	0	1	1
17	3	0	1	1	61	0	0	4	0
18	6	0	5	1	62	2	0	3	0
19	8	0	3	1	63	5	0	2	0
20	10	0	6	0	64	0	0	2	1
21	9	0	1	0	65	2	0	3	0
22	7	0	0	0	66	3	0	3	1
23	4	0	2	1	67	3	0	4	0
24	6	0	2	2	68	1	0	2	0
25	6	0	1	1	69	4	0	3	0
26	7	0	5	2	71	0	0	1	1
27	8	0	2	1	72	0	0	3	1
28	5	0	3	1	73	1	0	1	0
29	4	0	1	1	74	1	0	3	0
30	8	0	1	0	75	0	0	3	2
31	9	0	0	2	77	2	0	3	2
32	2	0	1	2	78	1	0	0	1
33	3	0	1	0	79	0	0	1	0
34	6	0	1	0	80	1	0	1	0
35	3	0	4	0	81	1	0	2	2
36	5	0	2	0	82	1	0	0	0
37	6	0	2	2	84	3	0	1	1
38	4	0	3	1	85	0	0	2	0
39	5	0	0	1	91	1	0	0	0
40	4	0	5	0	94	0	0	1	0
41	4	0	0	1	96	0	0	1	0
42	1	0	5	1	99	0	0	1	0
43	7	0	2	1	100	1	0	0	0
44	4	0	1	2	100	1	0	0	0
45	7	0	1	0					
						268	3	152	52





# FATAL CRASHES AND FATALITIES BY MONTH

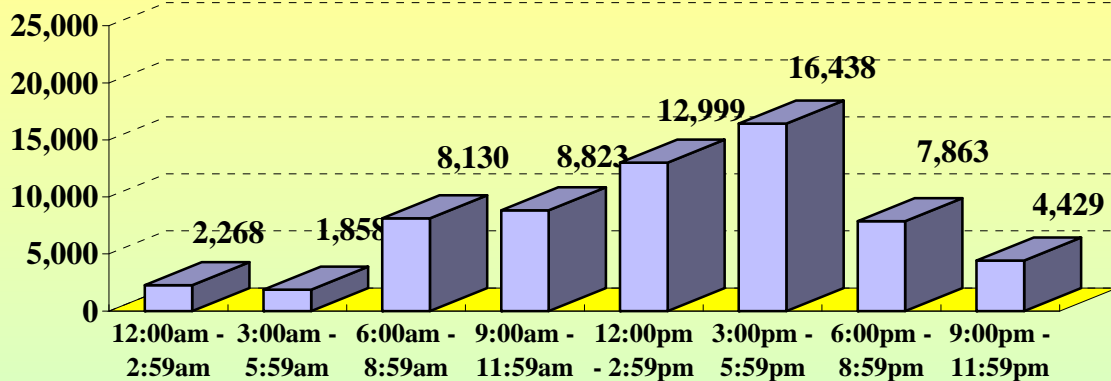
Month	Fatal Crashes	Fatalities
January	37	39
February	39	45
March	41	49
April	43	47
May	35	40
June	59	67
July	48	53
August	46	52
September	53	59
October	49	55
November	48	54
December	31	32
<b>Total</b>	<b>529</b>	<b>592</b>



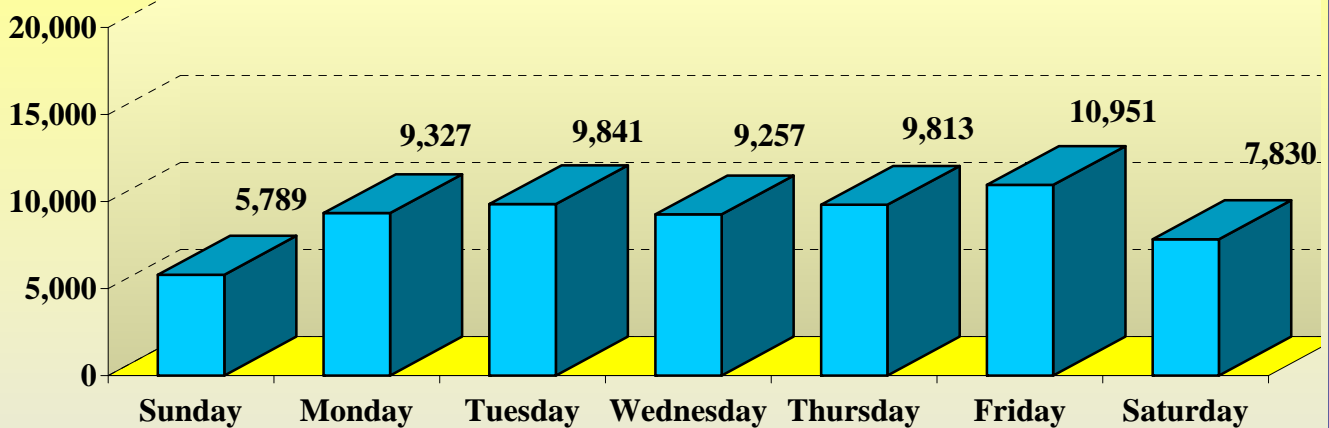


## CRASHES BY TIME OF DAY AND DAY OF WEEK

Time of Day	Sunday	Monday	Tuesday	Wednesday	Thursday	Friday	Saturday	Total
12:00am - 2:59am	515	187	233	220	270	289	554	2,268
3:00am - 5:59am	372	202	228	212	242	250	352	1,858
6:00am - 8:59am	402	1,383	1,619	1,474	1,463	1,287	502	8,130
9:00am - 11:59am	729	1,322	1,405	1,322	1,327	1,494	1,224	8,823
12:00pm - 2:59pm	1,273	1,877	1,990	1,849	2,033	2,312	1,665	12,999
3:00pm - 5:59pm	1,228	2,707	2,746	2,535	2,677	3,041	1,504	16,438
6:00pm - 8:59pm	839	1,097	1,079	1,128	1,188	1,377	1,155	7,863
9:00pm - 11:59pm	431	552	541	517	613	901	874	4,429
<b>Total</b>	<b>5,789</b>	<b>9,327</b>	<b>9,841</b>	<b>9,257</b>	<b>9,813</b>	<b>10,951</b>	<b>7,830</b>	<b>62,808</b>



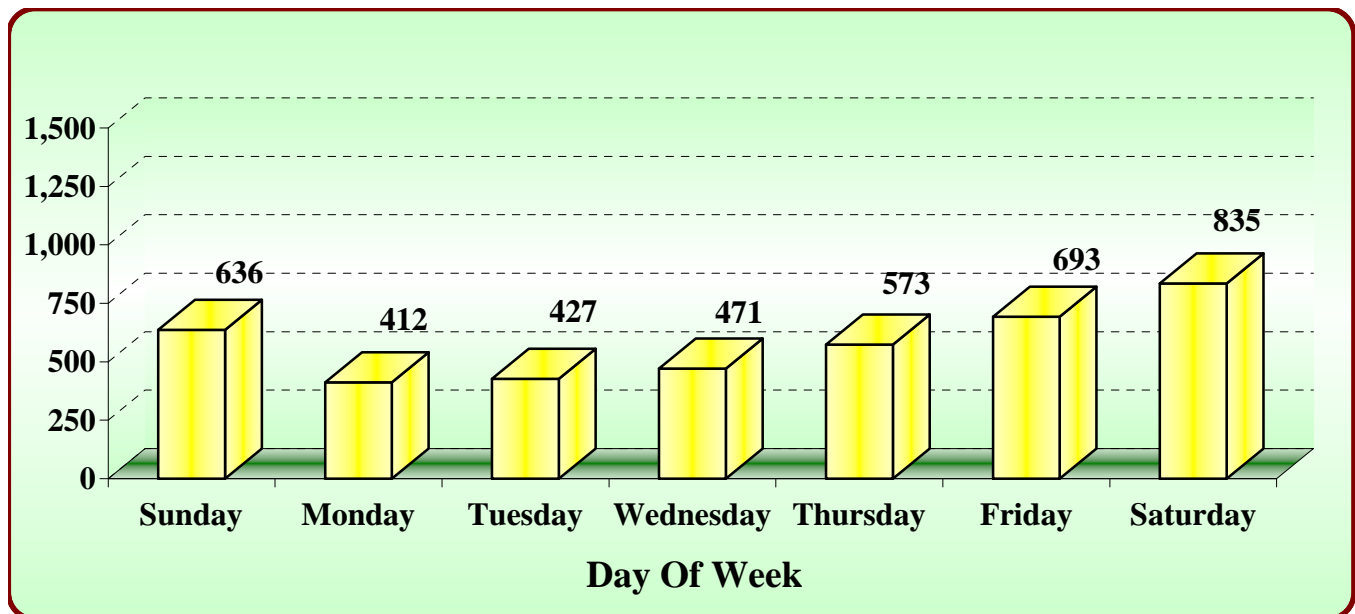
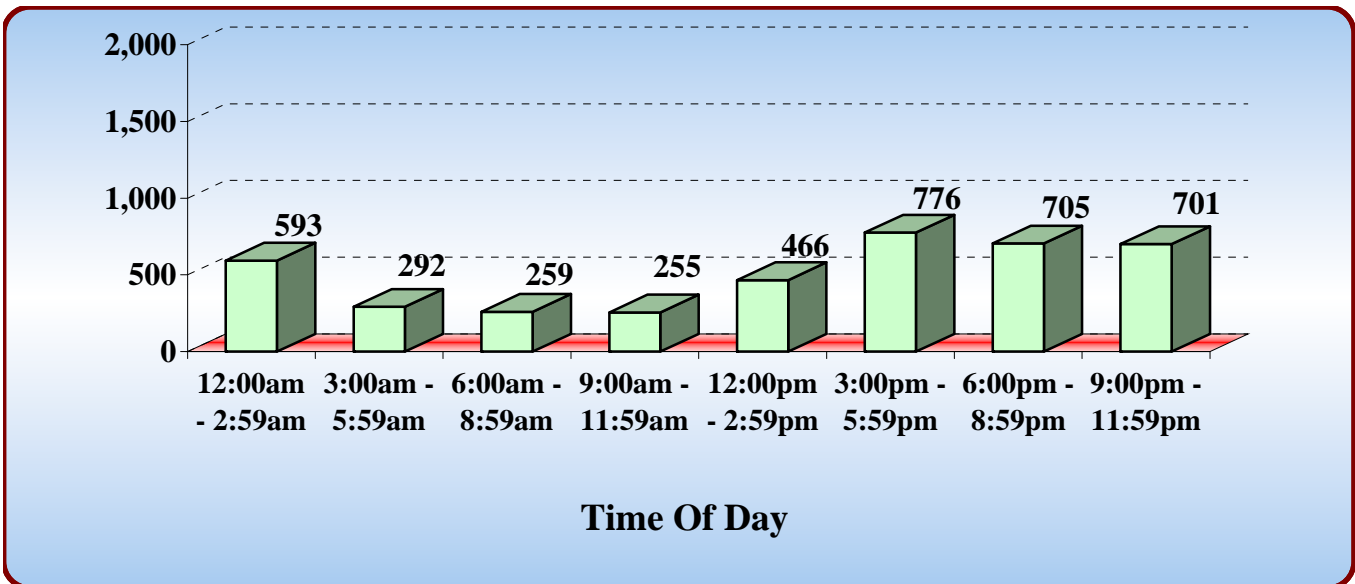
**Time Of Day**



**Day Of Week**

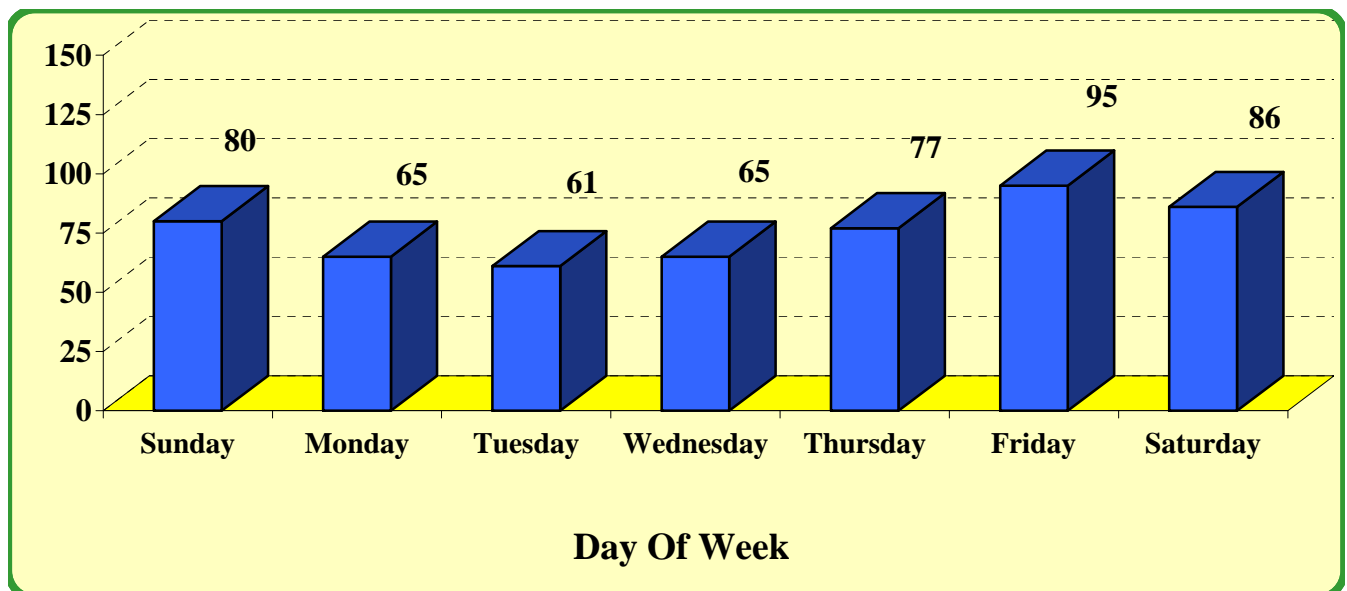
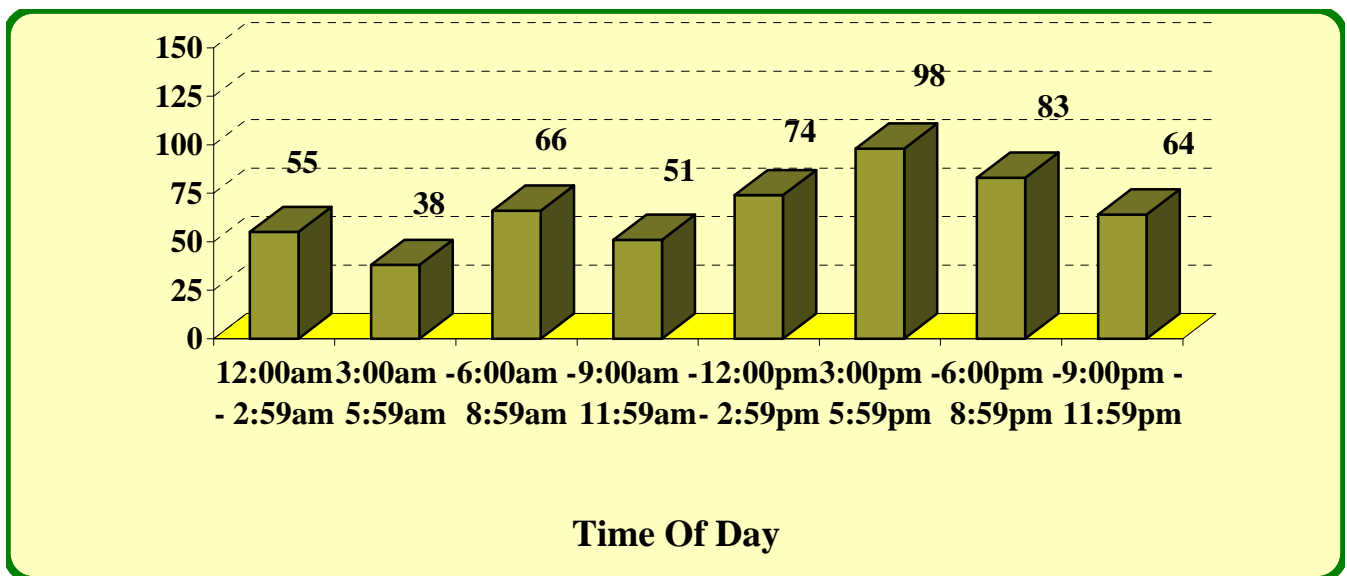
# ALCOHOL/DRUG RELATED CRASHES BY TIME OF DAY AND DAY OF WEEK

Time of Day	Sunday	Monday	Tuesday	Wednesday	Thursday	Friday	Saturday	Total
12:00am - 2:59am	152	36	42	53	78	68	164	<b>593</b>
3:00am - 5:59am	96	13	23	17	30	35	78	<b>292</b>
6:00am - 8:59am	41	25	30	41	36	44	42	<b>259</b>
9:00am - 11:59am	27	27	28	33	43	48	49	<b>255</b>
12:00pm - 2:59pm	74	55	44	57	66	91	79	<b>466</b>
3:00pm - 5:59pm	101	114	101	109	108	119	124	<b>776</b>
6:00pm - 8:59pm	82	74	87	88	95	129	150	<b>705</b>
9:00pm - 11:59pm	63	68	72	73	117	159	149	<b>701</b>
<b>Total</b>	<b>636</b>	<b>412</b>	<b>427</b>	<b>471</b>	<b>573</b>	<b>693</b>	<b>835</b>	<b>4,047</b>



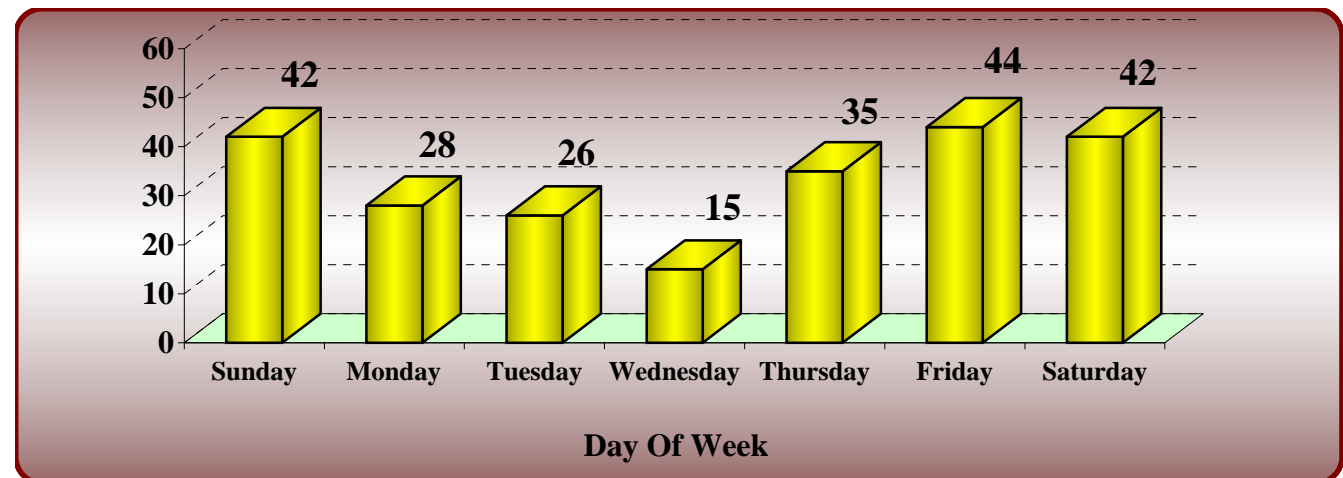
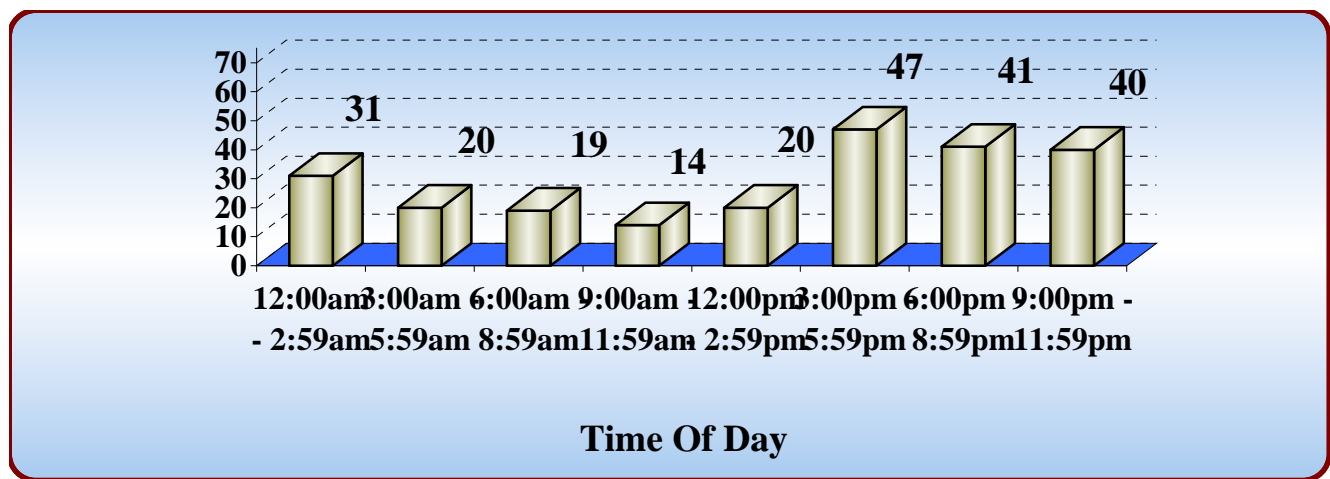
# FATAL CRASHES BY TIME OF DAY AND DAY OF WEEK

Time of Day	Sunday	Monday	Tuesday	Wednesday	Thursday	Friday	Saturday	Total
12:00am - 2:59am	15	3	6	3	11	9	8	55
3:00am - 5:59am	10	0	4	7	5	6	6	38
6:00am - 8:59am	12	11	8	9	10	8	8	66
9:00am - 11:59am	9	6	5	8	4	10	9	51
12:00pm - 2:59pm	11	6	6	8	17	13	13	74
3:00pm - 5:59pm	9	20	15	11	13	18	12	98
6:00pm - 8:59pm	9	13	8	11	8	15	19	83
9:00pm - 11:59pm	5	6	9	8	9	16	11	64
<b>Total</b>	<b>80</b>	<b>65</b>	<b>61</b>	<b>65</b>	<b>77</b>	<b>95</b>	<b>86</b>	<b>529</b>



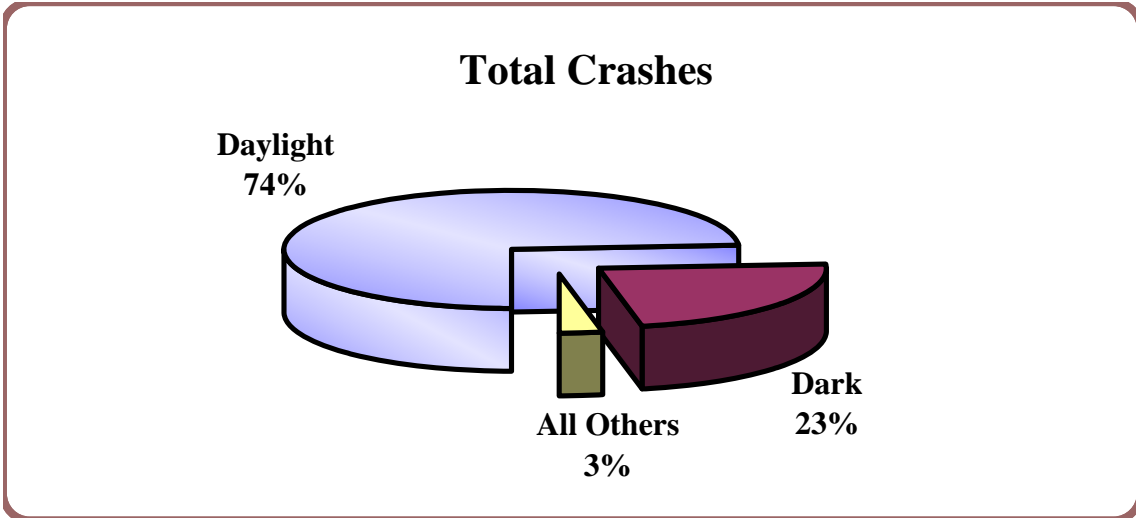
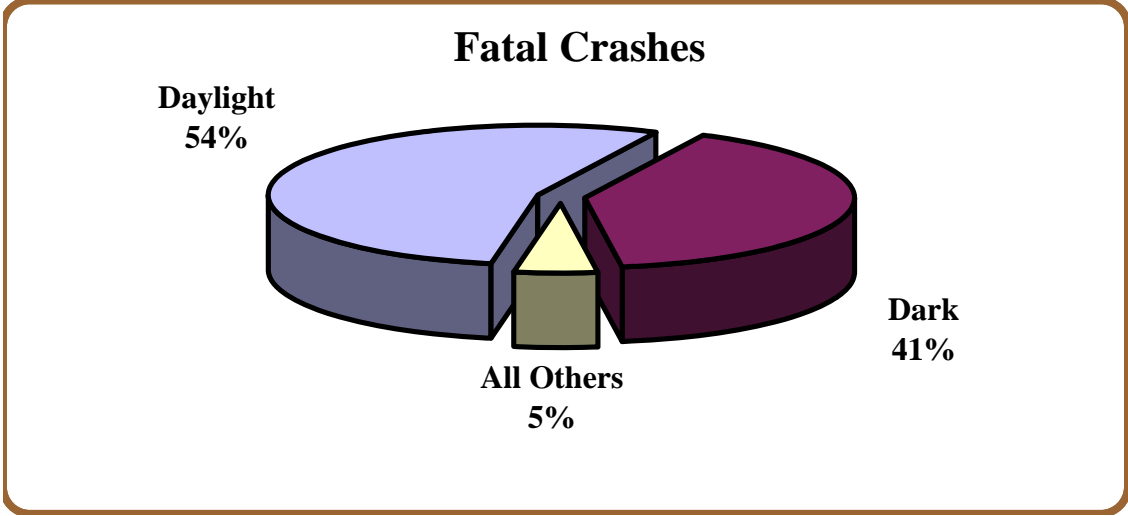
# ALCOHOL/DRUG RELATED FATAL CRASHES BY TIME OF DAY AND DAY OF WEEK

Time of Day	Sunday	Monday	Tuesday	Wednesday	Thursday	Friday	Saturday	Total
12:00am - 2:59am	10	1	4	0	9	4	3	31
3:00am - 5:59am	9	0	1	2	1	3	4	20
6:00am - 8:59am	4	3	3	2	1	3	3	19
9:00am - 11:59am	1	2	2	0	2	5	2	14
12:00pm - 2:59pm	4	1	1	0	4	4	6	20
3:00pm - 5:59pm	5	11	5	3	8	8	7	47
6:00pm - 8:59pm	6	6	5	2	4	9	9	41
9:00pm - 11:59pm	3	4	5	6	6	8	8	40
<b>Total</b>	<b>42</b>	<b>28</b>	<b>26</b>	<b>15</b>	<b>35</b>	<b>44</b>	<b>42</b>	<b>232</b>



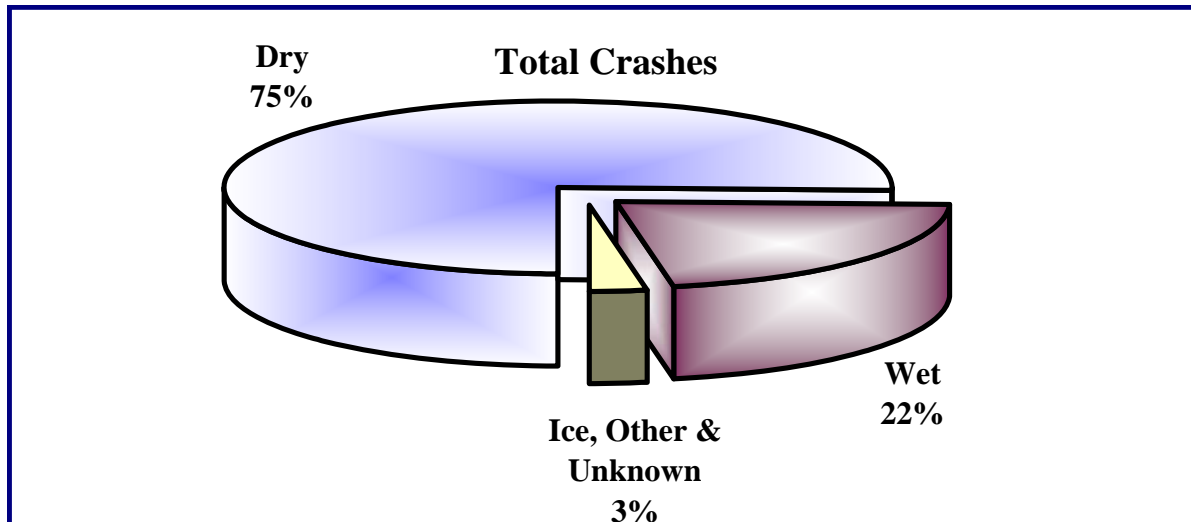
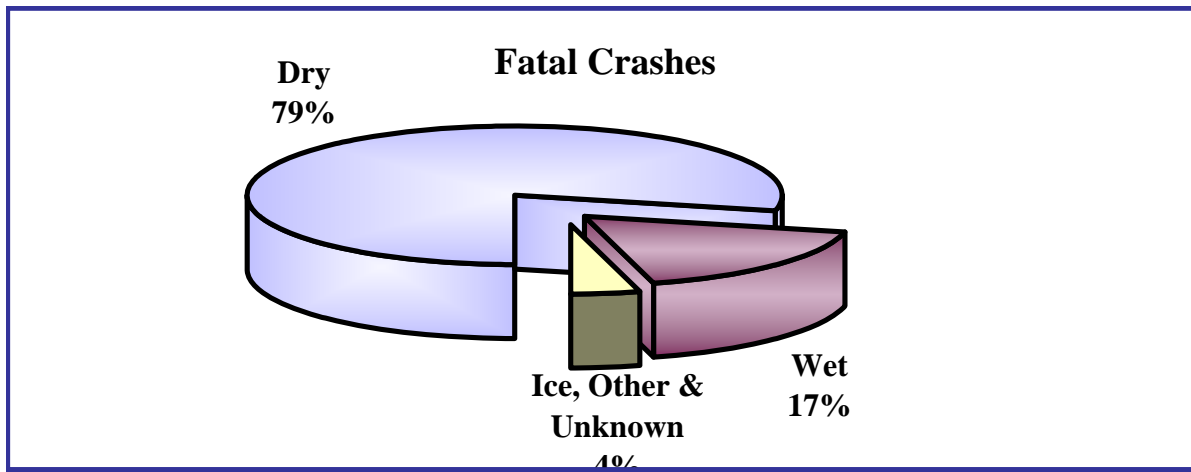
# CRASHES BY LIGHTING CONDITIONS

Light Condition	Fatal Crashes	Total Crashes
Daylight	288	46,422
Dark	215	14,410
Other	23	1,963
Unknown	3	13
<b>Total</b>	<b>529</b>	<b>62,808</b>



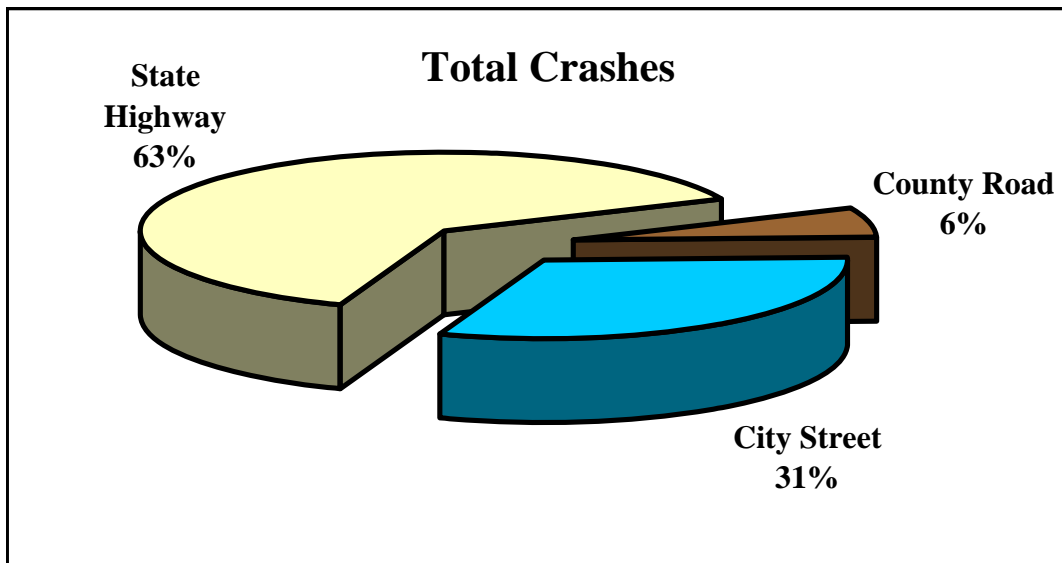
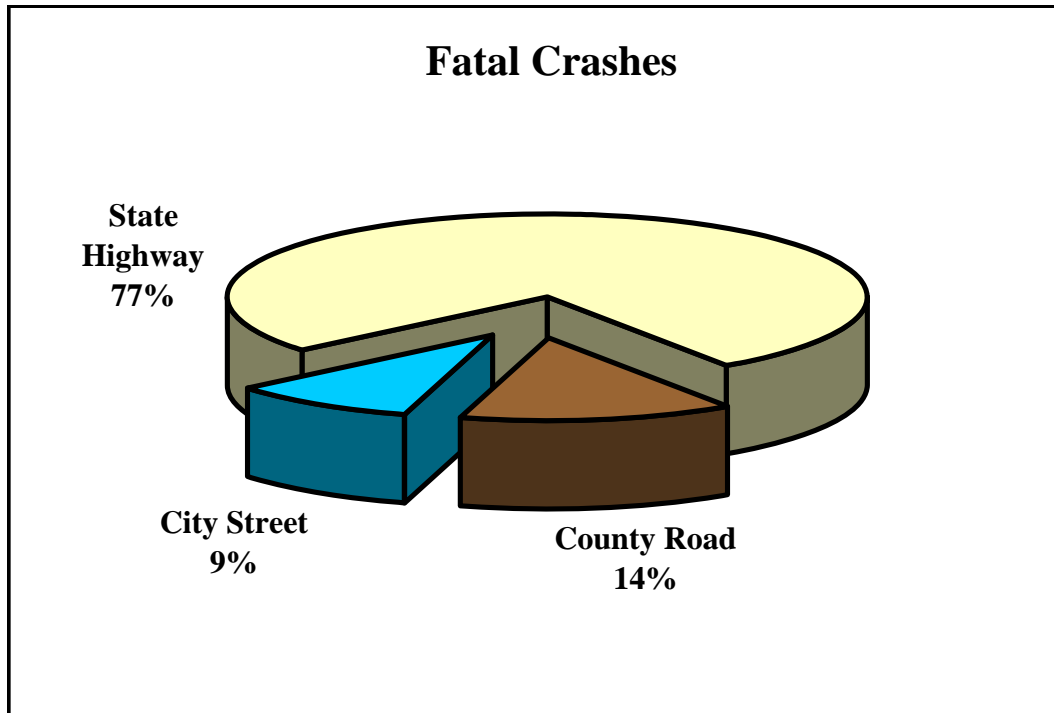
# CRASHES BY ROAD SURFACE CONDITIONS

Condition	Fatal Crashes	Total Crashes
Dry	416	47,431
Wet	91	13,677
Ice	14	1,278
Other	7	358
Unknown	1	64
<b>Total</b>	<b>529</b>	<b>62,808</b>



# CRASHES BY ROAD SYSTEM

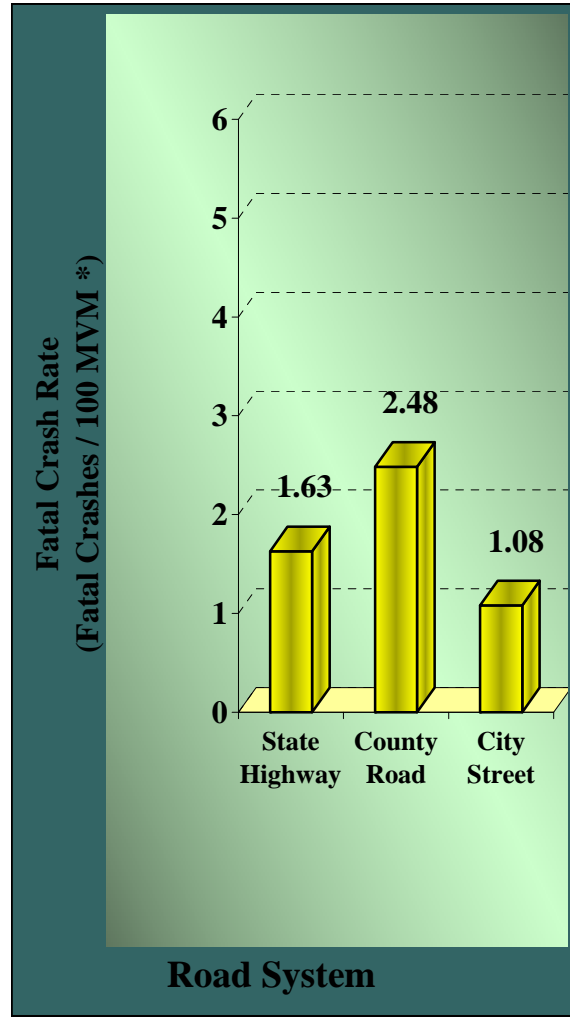
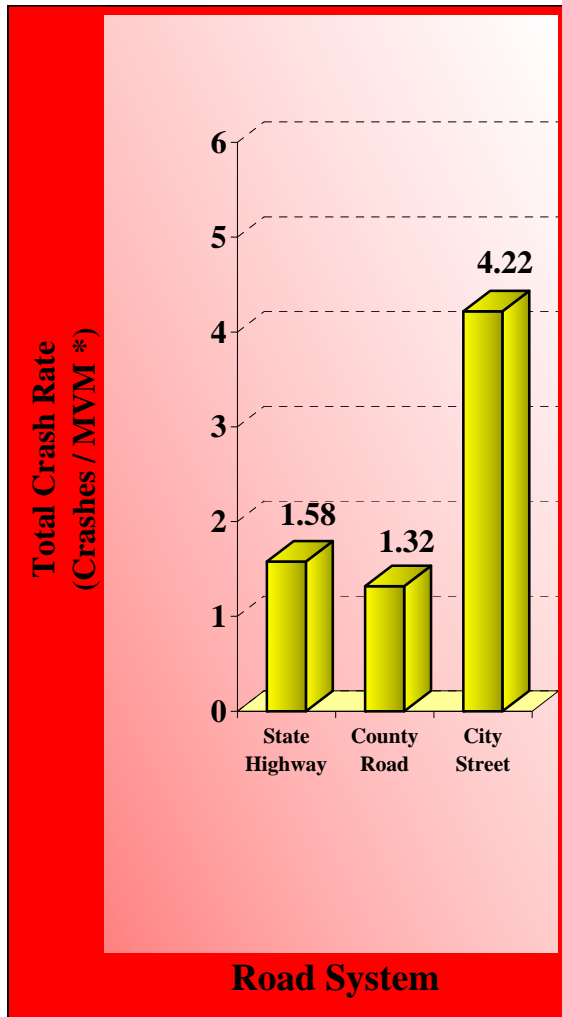
Road System	Fatal Crashes	Nonfatal Injury	P.D.O. *	Total Crashes
State Highway	406	13,105	25,894	39,405
County Road	73	1,462	2,339	3,874
City Street	50	4,919	14,560	19,529
<b>Totals</b>	<b>529</b>	<b>19,486</b>	<b>42,793</b>	<b>62,808</b>



\* Property Damage Only Crashes

# CRASH RATES BY ROAD SYSTEM

Road System	Annual MVM*	Total Crashes	Crashes per MVM*	Fatal Crashes	Fatal Crashes per 100 MVM*
State Highway	24,948	39,405	1.58	406	1.63
County Road	2,938	3,874	1.32	73	2.48
City Street	4,630	19,529	4.22	50	1.08
<b>Totals</b>	<b>32,516</b>	<b>62,808</b>	<b>1.93</b>	<b>529</b>	<b>1.63</b>



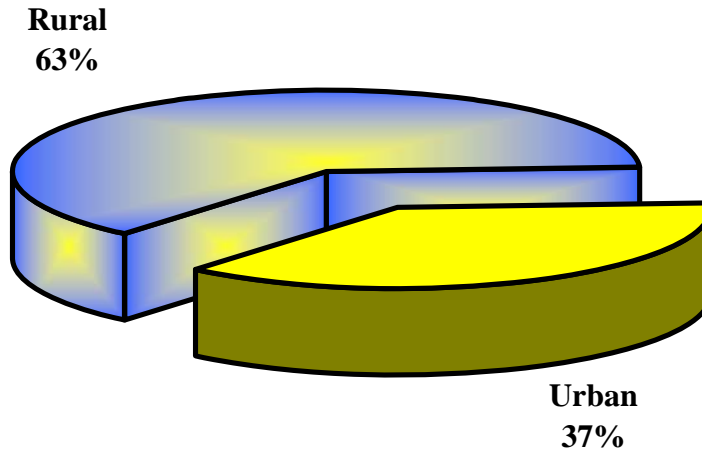
\* Million vehicle miles



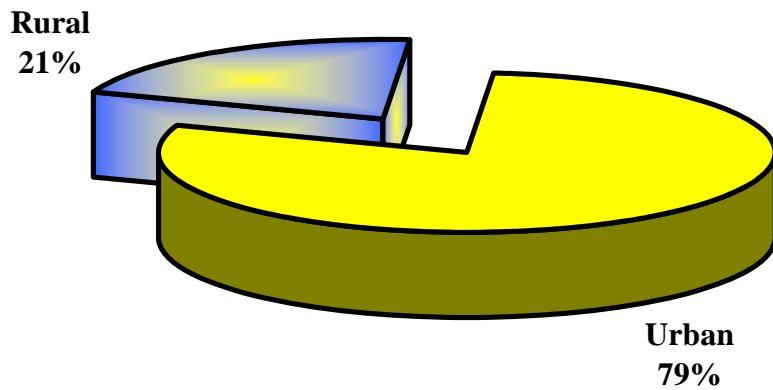
# CRASHES BY RURAL/URBAN LOCATION

Location	Fatal Crashes	Total Crashes
Rural	333	13,097
Urban	196	49,711
<b>Total</b>	<b>529</b>	<b>62,808</b>

## Fatal Crashes

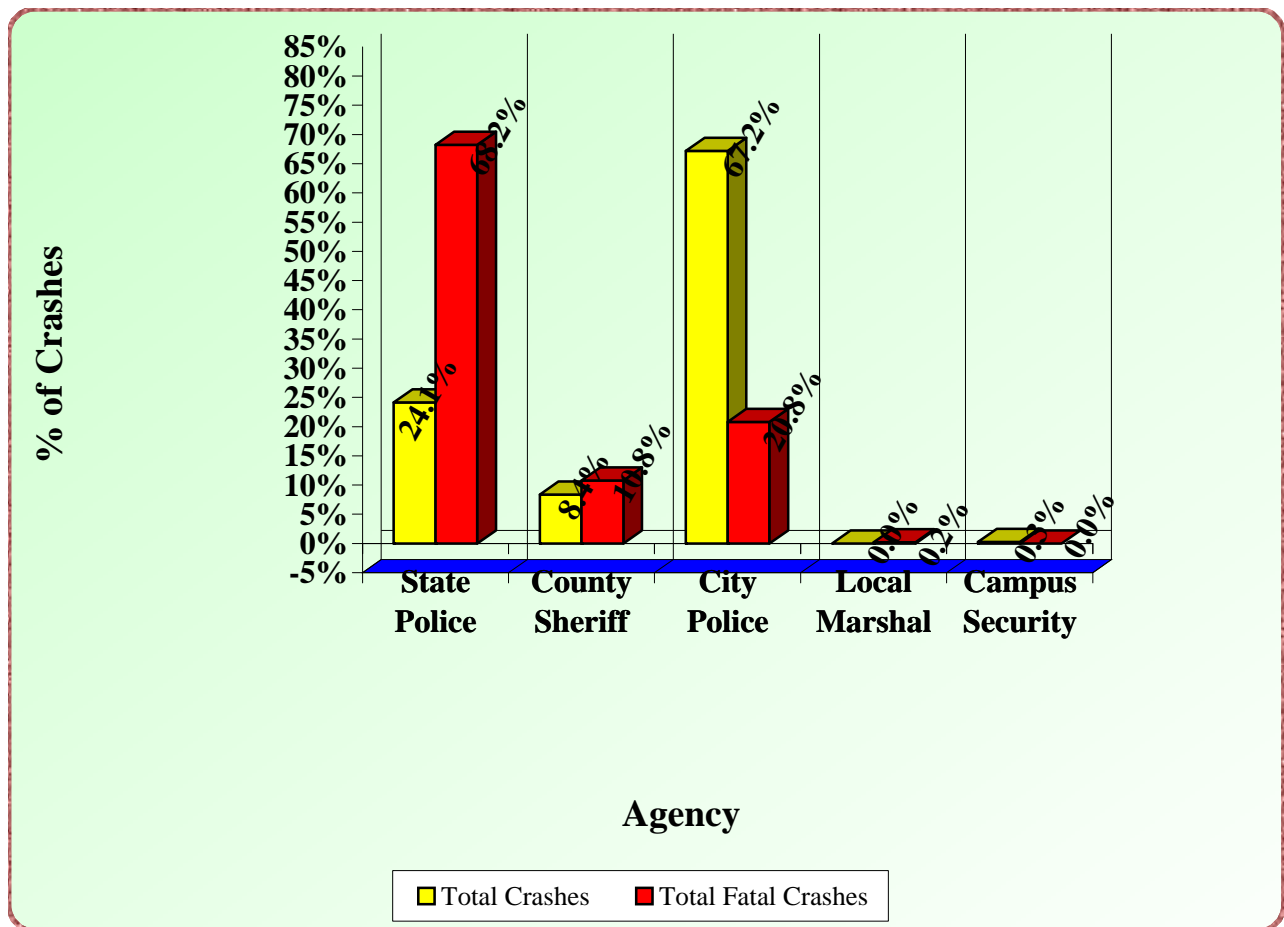


## Total Crashes



# CRASHES BY INVESTIGATING AGENCY

Agency	Total Crashes	% of Total	Total Fatal	% of Total
State Police	15,162	24.1%	361	68.2%
County Sheriff	5,269	8.4%	57	10.8%
City Police	42,197	67.2%	110	20.8%
Local Marshal	2	0.0%	1	0.2%
Campus Security	178	0.3%	0	0.0%
<b>Total</b>	<b>62,808</b>	<b>100.00%</b>	<b>529</b>	<b>100.00%</b>



# CRASHES BY TYPE OF COLLISION

<b>All Crashes</b>						
Type Of Collision	Fatal Crashes	Fatalities	Injury Crashes	Injuries	P.D.O. *	Total Crashes
Angle	90	101	5,709	10,311	12,088	<b>17,887</b>
Backing (Rear to Rear)	0	0	138	249	1,374	<b>1,512</b>
Head On	89	117	469	1,131	280	<b>838</b>
Rear End	20	24	5,277	8,776	13,277	<b>18,574</b>
Sideswipe Opposite Direction	4	4	371	583	837	<b>1,212</b>
Sideswipe Same Direction	9	9	728	1,118	3,630	<b>4,367</b>
Single Vehicle Crash	314	333	6,688	8,526	11,105	<b>18,107</b>
Other	3	4	106	180	202	<b>311</b>
<b>Total</b>	<b>529</b>	<b>592</b>	<b>19,486</b>	<b>30,874</b>	<b>42,793</b>	<b>62,808</b>

<b>Alcohol/Drug Related Crashes</b>						
Type Of Collision	Fatal Crashes	Fatalities	Injury Crashes	Injuries	P.D.O. *	Total Crashes
Angle	25	31	310	632	397	<b>732</b>
Backing (Rear to Rear)	0	0	5	11	42	<b>47</b>
Head On	48	60	68	231	28	<b>144</b>
Rear End	7	11	252	420	420	<b>679</b>
Sideswipe Opposite Direction	2	2	37	62	50	<b>89</b>
Sideswipe Same Direction	4	4	37	72	102	<b>143</b>
Single Vehicle Crash	144	151	950	1,236	1,111	<b>2,205</b>
Other	2	3	2	8	4	<b>8</b>
<b>Total</b>	<b>232</b>	<b>262</b>	<b>1,661</b>	<b>2,672</b>	<b>2,154</b>	<b>4,047</b>

\*Property Damage Only

# VEHICLES INVOLVED BY FIRST HARMFUL EVENT

Harmful Event	Single Vehicle Crashes			Multi-Vehicle Crashes		
	Fatal Crashes	Injury Crashes	P.D.O.* Crashes	Fatal Crashes	Injury Crashes	P.D.O.* Crashes
Animal	2	93	158	0	12	13
Bank Or Ledge	40	745	734	0	13	33
Bridge Or Underpass	7	88	195	0	10	21
Bridge Rail	0	28	62	0	4	11
Concrete Barrier	3	171	366	0	19	48
Culvert - Ditch	37	971	1,564	0	46	106
Fell From Vehicle	0	25	11	0	12	23
Fence Or Fence Post	7	223	652	0	19	39
Fire	0	2	0	0	4	6
Guard Rail Or Post	10	260	514	3	34	50
House - Building	1	52	82	0	1	15
Immersion	2	15	53	0	0	1
Impact Cushion Device	0	14	21	0	1	0
Jackknife	0	6	40	0	3	2
Light - Luminary Pole	0	29	92	1	5	11
Mv In Other Roadway	0	0	0	10	172	389
Mv In Transport	0	0	0	443	26,597	63,699
Other	3	193	252	7	59	145
Other Fixed Object	16	582	1,144	0	33	83
Other Object Not Fixed	3	79	228	0	30	86
Overturned	58	868	564	0	31	43
Parked Vehicle	2	171	1,825	6	109	231
Pedacycle	5	108	26	2	5	5
Pedestrian	31	325	28	4	15	15
Sign - Traffic Signal	10	204	654	0	16	37
Traffic Signal	0	0	1	2	3	8
Train	3	16	12	0	31	66
Tree(s)	65	1,072	1,224	0	237	51
Utility Pole	9	314	547	0	14	40
Unknown	0	23	28	0	4	4
<b>Total Vehicles</b>	<b>314</b>	<b>6,677</b>	<b>11,077</b>	<b>478</b>	<b>27,539</b>	<b>65,281</b>

\*Property Damage Only

# DRIVERS INVOLVED BY OPERATOR FACTOR

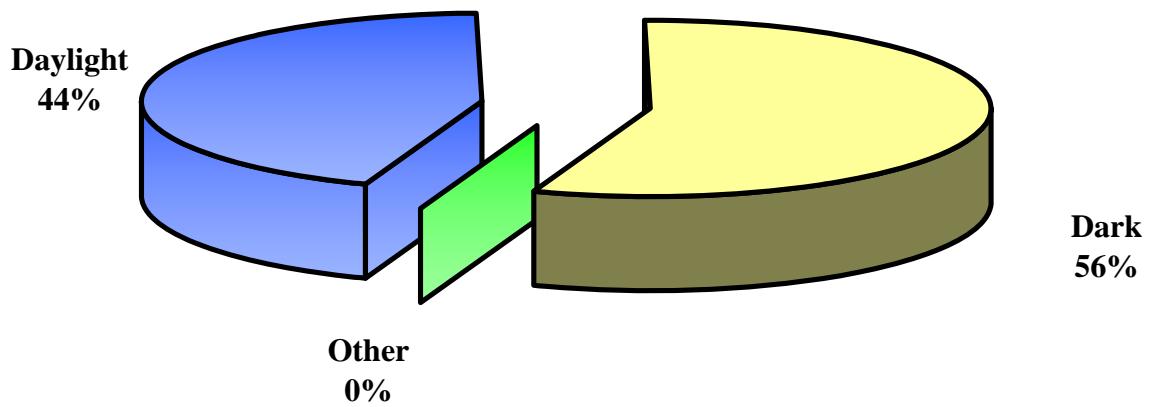
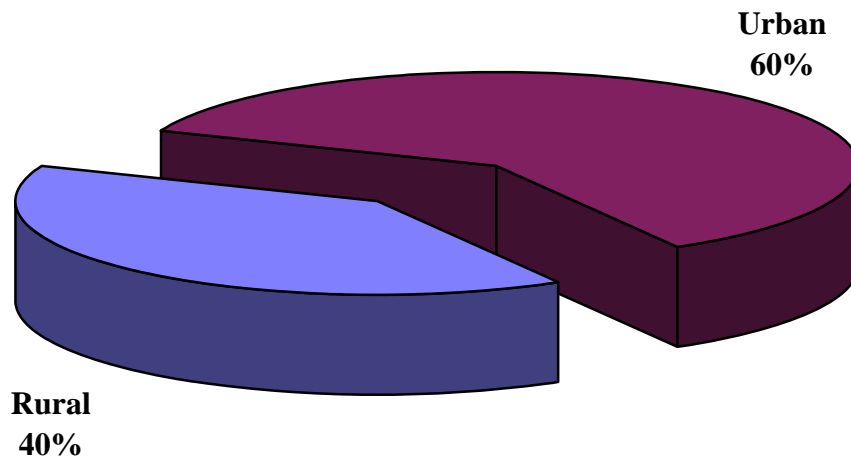
Operator Factor	Crash Severity					Total
	1	2	3	4	5	
None	252	1,462	4,651	8,192	32,462	47,019
Alcohol	41	306	380	279	978	1,984
Careless / Prohibited Driving	180	1,095	2,046	2,977	11,695	17,993
Crossing Median	2	1	5	2	23	33
Crowded Off Roadway	1	6	22	33	152	214
Cutting In	0	1	7	19	126	153
Defective Brakes	0	4	34	56	219	313
Defective Lights	0	3	8	9	39	59
Disregard Officer/Flagman	1	4	5	13	37	60
Disregard Stop Sign	10	35	123	174	465	807
Disregard Traffic Signal	3	42	213	215	734	1,207
Disregard Yield Sign	0	4	1	7	30	42
Driving Without Lights	0	4	10	19	51	84
Drugs	3	15	29	16	79	142
Failure To Dim Headlights	0	2	5	4	23	34
Failure To Or Improper Signal	0	1	11	8	60	80
Failure To Yield	45	350	1,355	1,902	7,742	11,394
Following Too Close	5	116	608	1,523	6,454	8,706
Impeding Traffic	0	2	12	16	42	72
Improper Backing	0	2	16	71	1,460	1,549
Improper Lane Change	2	9	44	135	1,305	1,495
Improper Left Turn	1	21	63	94	649	828
Improper Passing	3	21	31	59	368	482
Improper Right Turn	0	5	25	51	395	476
Improperly Parked	2	7	3	12	83	107
Other Defective Equipment	2	25	66	53	317	463
Prohibited U Turn	0	1	8	5	28	42
Too Fast For Conditions	58	218	454	551	2,339	3,620
Wrong Side Of Road	64	88	107	117	363	739
Wrong Way / One Way Traffic	1	3	12	14	70	100
Other	48	192	547	664	3,016	4,467
Unknown	70	198	655	1,143	4,555	6,621
<b>Total</b>	<b>794</b>	<b>4,243</b>	<b>11,556</b>	<b>18,433</b>	<b>76,359</b>	<b>111,385</b>

# DRIVERS INVOLVED IN ALCOHOL/DRUG RELATED CRASHES BY OPERATOR FACTOR

Operator Factor	Crash Severity					Total
	1	2	3	4	5	
None	106	129	289	346	1,075	1,945
Alcohol	41	304	377	279	977	1,978
Careless / Prohibited Driving	78	46	107	110	451	792
Crossing Median	2	0	1	0	3	6
Crowded Off Roadway	0	0	1	1	2	4
Cutting In	0	0	0	1	4	5
Defective Brakes	0	0	1	1	2	4
Defective Lights	0	1	0	0	3	4
Disregard Officer/Flagman	0	1	0	0	0	1
Disregard Stop Sign	3	3	13	9	28	56
Disregard Traffic Signal	1	1	15	13	28	58
Disregard Yield Sign	0	0	0	1	3	4
Driving Without Lights	0	0	0	2	3	5
Drugs	3	15	29	16	79	142
Failure To Dim Headlights	0	1	0	1	0	2
Failure To Or Improper Signal	0	0	1	1	3	5
Failure To Yield	11	17	58	61	194	341
Following Too Close	2	4	28	33	141	208
Impeding Traffic	0	1	2	1	1	5
Improper Backing	0	0	0	3	33	36
Improper Lane Change	2	0	4	1	27	34
Improper Left Turn	0	2	4	1	11	18
Improper Passing	1	0	1	2	8	12
Improper Right Turn	0	0	0	0	11	11
Improperly Parked	1	1	0	2	4	8
Other Defective Equipment	1	1	0	0	2	4
Prohibited U Turn	0	0	1	2	1	4
Too Fast For Conditions	25	10	19	20	46	120
Wrong Side Of Road	32	4	9	9	21	75
Wrong Way / One Way Traffic	1	0	1	2	6	10
Other	19	7	12	7	57	102
Unknown	23	8	12	17	49	109
<b>Total</b>	<b>352</b>	<b>556</b>	<b>985</b>	<b>942</b>	<b>3,273</b>	<b>6,108</b>

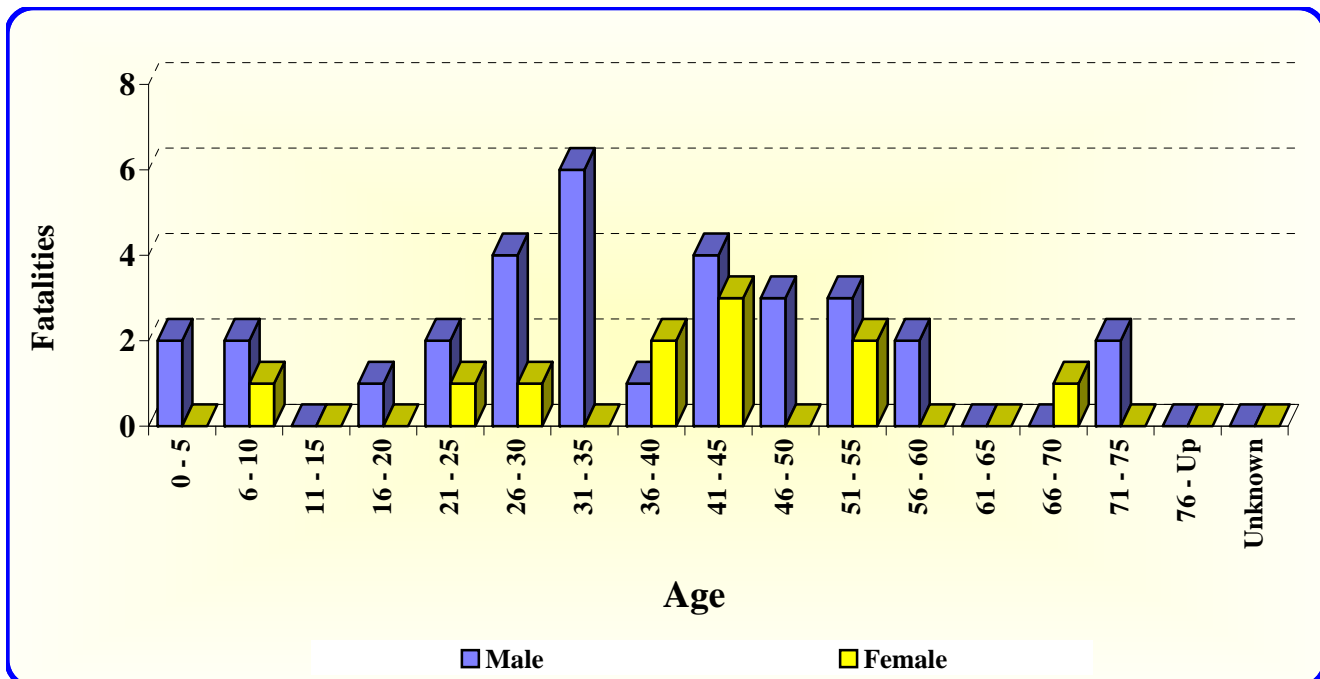
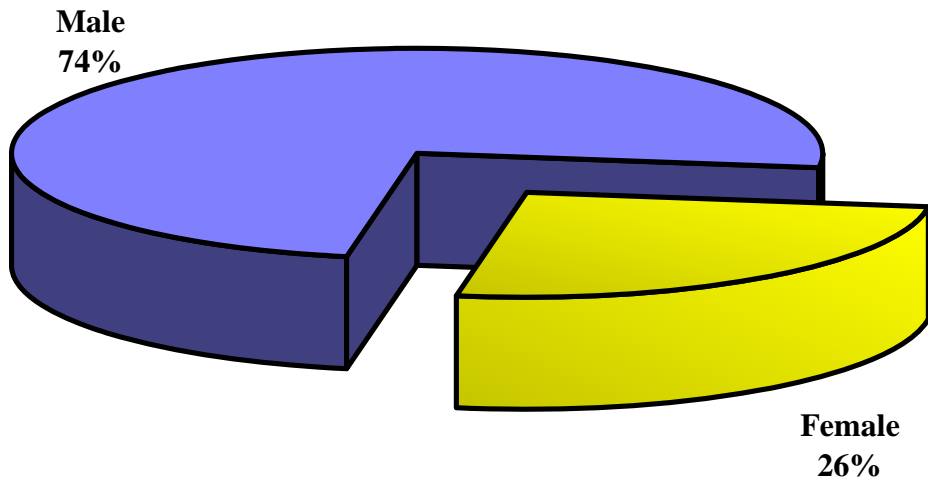
# NON-MOTORIST FATALITIES

Type	Rural	Urban	Daylight	Dark	Other
Pedestrian	15	20	15	20	0
Pedalcyclist	1	4	1	4	0
Other Non-Motorist	1	2	3	0	0
Total	17	26	19	24	0



## NON-MOTORIST FATALITIES (Cont.)

	Male	Female	Total
Pedestrian	25	10	35
Pedalcyclist	4	1	5
Other Non-Motorist	3	0	3





# ARKANSAS' 20 LARGEST CITIES BY POPULATION CRASHES, FATALITIES AND INJURIES

City	Fatal Crashes	Fatalities	Injury Crashes	Injuries	P.D.O. * Crashes	Total Crashes
Little Rock	27	32	2,202	3,486	4,261	6,490
Fort Smith	10	11	852	1,225	2,474	3,336
North Little Rock	8	8	906	1,350	2,550	3,464
Fayetteville	9	9	484	716	2,018	2,511
Jonesboro	11	16	669	1,061	2,039	2,719
Pine Bluff	4	4	472	786	1,335	1,811
Springdale	4	4	391	561	1,404	1,799
Conway	3	3	431	682	1,262	1,696
Rogers	1	1	380	633	702	1,083
Hot Springs	3	3	562	810	1,675	2,240
Jacksonville	3	3	253	362	709	965
West Memphis	0	0	260	402	702	962
Texarkana	7	11	260	420	656	923
Russellville	1	1	188	257	781	970
Paragould	3	3	255	423	597	855
Benton	5	6	196	266	527	728
El Dorado	0	0	136	198	603	739
Sherwood	2	3	144	207	260	406
Bentonville	0	0	258	368	896	1,154
Van Buren	1	1	147	220	447	595

\* Property Damage Only

# ARKANSAS' 20 LARGEST CITIES BY POPULATION ALCOHOL/DRUG RELATED CRASHES, FATALITIES AND INJURIES

City	Fatal Crashes	Fatalities	Injury Crashes	Injuries	P.D.O. * Crashes	Total Crashes
Little Rock	11	13	118	209	154	283
Fort Smith	7	8	80	111	141	228
North Little Rock	6	6	65	108	74	145
Fayetteville	4	4	32	51	121	157
Jonesboro	3	4	33	56	61	97
Pine Bluff	1	1	30	46	60	91
Springdale	0	0	62	91	144	206
Conway	1	1	28	42	43	72
Rogers	0	0	33	49	39	72
Hot Springs	1	1	39	53	102	142
Jacksonville	1	1	6	6	29	36
West Memphis	0	0	23	39	37	60
Texarkana	2	5	15	24	30	47
Russellville	0	0	23	36	40	63
Paragould	1	1	23	42	22	46
Benton	3	3	16	28	29	48
El Dorado	0	0	12	20	26	38
Sherwood	1	2	15	26	14	30
Bentonville	0	0	16	24	20	36
Van Buren	1	1	7	12	24	32

\* Property Damage Only

## TOTAL CRASHES, FATALITIES AND INJURIES BY COUNTY

County	Fatal Crashes	Fatalities	Injury Crashes	Injuries	P.D.O. Crashes	Total Crashes
Arkansas	4	5	92	131	305	401
Ashley	4	4	100	149	307	411
Baxter	8	9	295	436	560	863
Benton	19	21	1,154	1,758	2,683	3,856
Boone	8	9	382	821	260	650
Bradley	1	1	54	99	84	139
Calhoun	4	4	28	43	61	93
Carroll	9	10	273	562	138	420
Chicot	4	5	74	138	90	168
Clark	7	7	137	199	313	457
Clay	2	2	70	103	128	200
Cleburne	4	4	214	302	307	525
Cleveland	3	3	33	57	35	71
Columbia	3	3	89	115	240	332
Conway	4	4	110	152	194	308
Craighead	19	25	831	1,345	2,242	3,092
Crawford	8	9	348	545	831	1,187
Crittenden	9	12	413	615	1,101	1,523
Cross	2	3	118	189	202	322
Dallas	3	3	55	97	86	144
Desha	3	3	53	89	80	136
Drew	4	4	119	191	114	237
Faulkner	13	13	655	1,038	1,692	2,360
Franklin	5	6	100	195	110	215
Fulton	6	7	55	84	56	117
Garland	13	13	968	1,425	2,266	3,247
Grant	6	6	63	97	128	197
Greene	5	8	286	471	628	919
Hempstead	6	7	115	197	292	413
Hot Spring	10	11	157	229	324	491
Howard	3	3	19	27	26	48
Independence	15	15	277	421	695	987
Izard	2	2	36	50	54	92
Jackson	7	7	85	152	124	216
Jefferson	15	17	636	1,036	1,606	2,257
Johnson	7	7	107	164	226	340
Lafayette	5	5	22	30	29	56
Lawrence	10	11	47	83	62	119

**TOTAL CRASHES, FATALITIES AND INJURIES  
BY COUNTY (CONT.)**

<b>County</b>	<b>Fatal Crashes</b>	<b>Fatalities</b>	<b>Injury Crashes</b>	<b>Injuries</b>	<b>P.D.O. Crashes</b>	<b>Total Crashes</b>
Lee	3	5	28	55	18	49
Lincoln	5	7	33	49	64	102
Little River	4	5	53	72	56	113
Logan	2	2	114	184	123	239
Lonoke	12	12	354	532	903	1,269
Madison	9	11	101	162	107	217
Marion	3	4	64	96	81	148
Miller	10	14	312	510	728	1,050
Mississippi	14	14	209	347	532	755
Monroe	5	5	41	83	96	142
Montgomery	1	1	50	76	52	103
Nevada	1	1	63	99	128	192
Newton	4	4	65	84	79	148
Ouachita	3	5	93	137	106	202
Perry	3	6	26	34	33	62
Phillips	6	7	69	144	67	142
Pike	2	2	50	103	69	121
Poinsett	4	4	167	242	254	425
Polk	5	6	119	182	149	273
Pope	6	6	300	408	1,005	1,311
Prairie	5	5	33	53	50	88
Pulaski	51	57	3,870	5,941	8,467	12,388
Randolph	4	4	77	139	130	211
Saline	17	20	562	783	1,465	2,044
Scott	1	1	38	54	64	103
Searcy	3	3	63	93	48	114
Sebastian	15	16	969	1,395	2,743	3,727
Sevier	2	2	117	249	113	232
Sharp	1	1	84	156	69	154
St Francis	11	13	433	1,041	225	669
Stone	2	2	40	57	65	107
Union	4	5	253	383	741	998
Van Buren	3	3	96	149	166	265
Washington	27	27	1,156	1,712	3,816	4,999
White	14	16	595	1,037	1,071	1,680
Woodruff	4	4	39	64	39	82
Yell	3	4	80	134	192	275
<b>Totals</b>	<b>529</b>	<b>592</b>	<b>19,486</b>	<b>30,874</b>	<b>42,793</b>	<b>62,808</b>

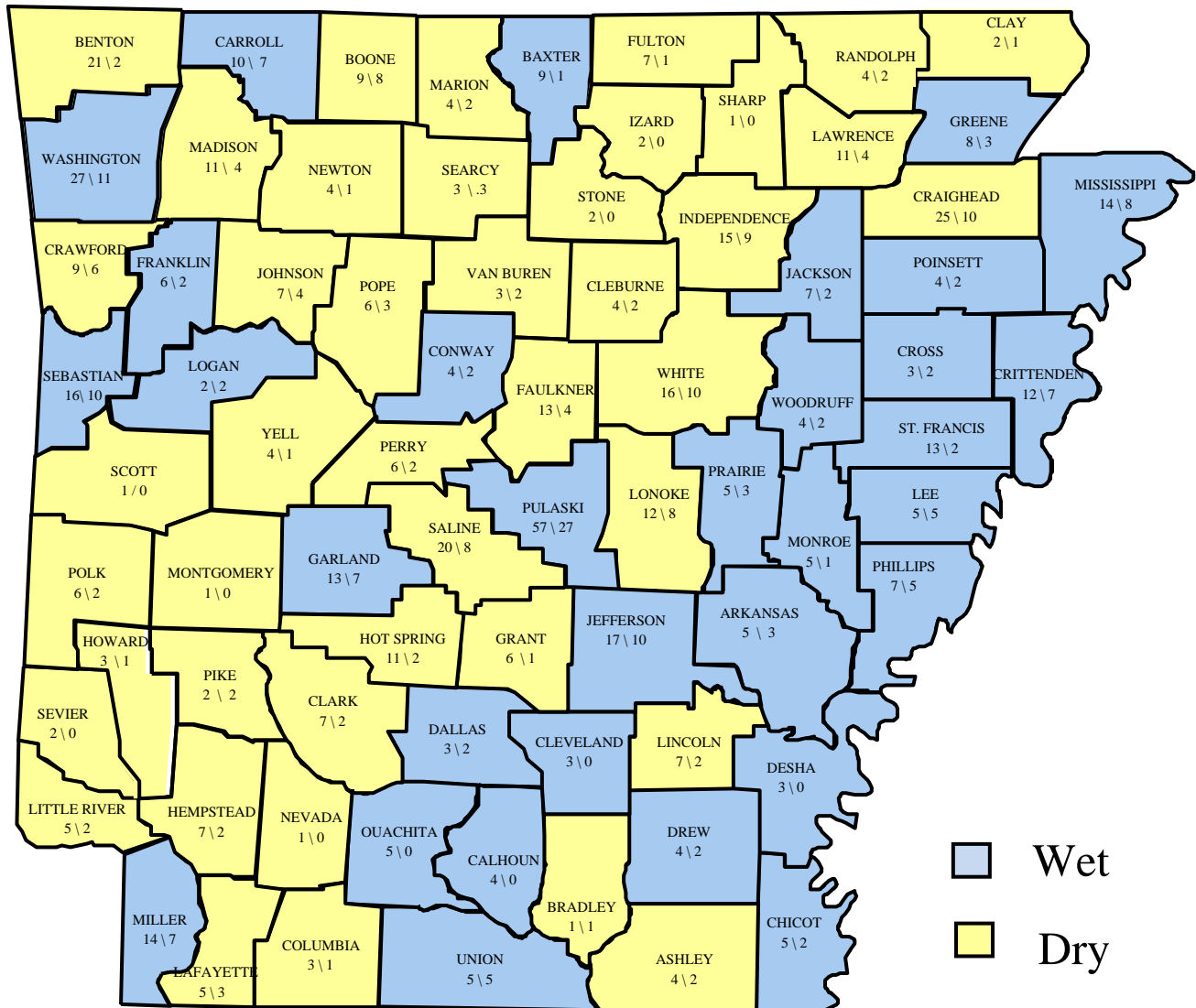
## ALCOHOL/DRUG RELATED CRASHES, FATALITIES AND INJURIES BY COUNTY

County	Fatal Crashes	Fatalities	Injury Crashes	Injuries	P.D.O. Crashes	Total Crashes
Arkansas	2	3	9	14	12	23
Ashley	2	2	7	9	19	28
Baxter	1	1	33	42	27	61
Benton	2	2	105	162	123	230
Boone	7	8	24	39	11	42
Bradley	1	1	7	17	7	15
Calhoun	0	0	2	2	3	5
Carroll	6	7	25	50	12	43
Chicot	1	2	5	8	7	13
Clark	2	2	15	18	7	24
Clay	1	1	11	21	8	20
Cleburne	2	2	21	28	15	38
Cleveland	0	0	4	4	3	7
Columbia	1	1	5	6	9	15
Conway	2	2	14	19	12	28
Craighead	8	10	49	82	71	128
Crawford	5	6	32	58	40	77
Crittenden	4	7	35	59	69	108
Cross	1	2	8	16	9	18
Dallas	2	2	6	10	1	9
Desha	0	0	3	4	3	6
Drew	2	2	8	11	4	14
Faulkner	4	4	47	73	72	123
Franklin	1	2	7	14	3	11
Fulton	1	1	6	10	8	15
Garland	7	7	80	125	143	230
Grant	1	1	6	8	7	14
Greene	2	3	30	53	29	61
Hempstead	2	2	10	12	21	33
Hot Spring	2	2	23	30	23	48
Howard	1	1	2	3	1	4
Independence	9	9	37	61	49	95
Izard	0	0	0	0	4	4
Jackson	2	2	13	25	11	26
Jefferson	8	10	56	91	73	137
Johnson	4	4	12	24	14	30
Lafayette	3	3	2	2	0	5
Lawrence	4	4	3	9	5	12

## ALCOHOL/DRUG RELATED CRASHES, FATALITIES AND INJURIES BY COUNTY (CONT.)

County	Fatal Crashes	Fatalities	Injury Crashes	Injuries	P.D.O. Crashes	Total Crashes
Lee	3	5	2	4	1	6
Lincoln	2	2	7	7	4	13
Little River	2	2	8	16	3	13
Logan	2	2	17	27	12	31
Lonoke	8	8	31	43	36	75
Madison	3	4	6	9	9	18
Marion	1	2	7	11	8	16
Miller	4	7	23	38	32	59
Mississippi	8	8	20	30	27	55
Monroe	1	1	3	5	0	4
Montgomery	0	0	9	19	5	14
Nevada	0	0	8	14	7	15
Newton	1	1	5	6	7	13
Ouachita	0	0	15	27	12	27
Perry	1	2	5	7	2	8
Phillips	4	5	2	9	1	7
Pike	2	2	2	3	7	11
Poinsett	2	2	16	24	12	30
Polk	2	2	11	14	3	16
Pope	3	3	37	57	59	99
Prairie	3	3	1	5	0	4
Pulaski	24	27	238	401	311	573
Randolph	2	2	6	11	5	13
Saline	8	8	60	106	78	146
Scott	0	0	5	5	1	6
Searcy	3	3	8	15	3	14
Sebastian	9	10	96	134	162	267
Sevier	0	0	11	13	12	23
Sharp	0	0	6	6	5	11
St. Francis	1	2	13	23	8	22
Stone	0	0	3	4	3	6
Union	4	5	25	55	34	63
Van Buren	2	2	10	19	10	22
Washington	11	11	122	179	293	426
White	10	10	44	78	35	89
Woodruff	2	2	2	7	1	5
Yell	1	1	15	22	11	27
<b>Totals</b>	<b>232</b>	<b>262</b>	<b>1,661</b>	<b>2,672</b>	<b>2,154</b>	<b>4,047</b>

# TOTAL FATALITIES VS ALCOHOL/DRUG RELATED FATALITIES BY COUNTY



County	Number of Counties	Total Fatalities	Alcohol/Drug Related Fatalities	% Alcohol/Drug Related
Wet	32	299	142	47%
Dry	43	293	120	41%
Total	75	592	262	44%