

**NORTH DAKOTA GRAIN AND OILSEED
TRANSPORTATION STATISTICS
1992-93**

**Dean Busch
and
Kimberly Vachal**

**UGPTI Publication No. 97
September 1993**



Upper Great Plains Transportation Institute
North Dakota State University
Fargo, North Dakota

North Dakota Grain and Oilseed Transportation Statistics 1992-93

***UGPTI Publication No. 97
September 1993***

Dean Busch
Student Research Assistant

and

Kimberly Vachal
Transportation Economist

in cooperation with

**North Dakota Wheat Commission
Bismarck, North Dakota**

and

**North Dakota Public Service Commission
Bismarck, North Dakota**

*With special thanks to
the North Dakota Grain Elevator Industry
who provide these data monthly.*

PREFACE

The 1992-93 North Dakota Grain and Oilseed Transportation Statistics Report was prepared by Dean Busch and Kimberly Vachal, Upper Great Plains Transportation Institute. The authors gratefully acknowledge the desktop publishing assistance of Bev Trittin in constructing this report.

This report represents a continuation of analysis concerned with the patterns and methods of distributing grains and oilseeds from North Dakota. This series began with the analysis of 1956-57 data and was published in Agricultural Economics Reports 15, 17, 44, 56, and 86 and Agricultural Experiment Station Bulletin 462. The compilation and analysis of data for the year 1967-68 in this series was assumed by the Upper Great Plains Transportation Institute. Also, the data representing the 1967-68 period were the first results of the requirements of the North Dakota Public Service Commission that all North Dakota elevators report monthly movements of grains and oilseeds by truck and rail. Prior to 1967-68, these data had been estimated from questionnaires completed by a sample of country elevators.

North Dakota State Wheat Commission

Sharold Geist, Chairman

Alan Lee, Berthold
Maynard Satrom, Oriska
Donald Paulson, Coleharbor

Cecil Watson, Cavalier
Don Sondrol, Vice Chairman
Larry Lee, Velva

Mel Maier, Administrator
Neal Fisher, Deputy Administrator
Margie Martin, Production Promotion Specialist
Ellen Huber, Program Assistant

North Dakota Public Service Commission

Commissioners:	Bruce Hagen, President Leo M. Reinbold Susan Wefald
Transportation Division:	Robert Senger, Director
Grain Elevator Division:	Jon Mielke, Director

TABLE OF CONTENTS

	<u>Page</u>
PREFACE	i
North Dakota State Wheat Commission	i
North Dakota Public Service Commission	i
TABLE OF CONTENTS	ii
NORTH DAKOTA GRAIN AND OILSEED TRANSPORTATION STATISTICS	iii
Objective of Report	iii
Scope of Report	iii
Source of Data	iii
Organization of the Remainder of the Report	iii
TOTAL GRAIN AND OILSEED SHIPMENTS	1
HARD RED SPRING WHEAT	13
DURUM	21
BARLEY	29
SUNFLOWER	37
OATS	45
SOYBEANS	53
FLAX	61
CORN	69

NORTH DAKOTA GRAIN AND OILSEED TRANSPORTATION STATISTICS 1992-93

Objective of Report

The report represents a continuation of analysis concerned with the patterns and methods of distributing grain from North Dakota. The collection and compilation of this type of data began in 1956-57. The objectives of this report, like prior reports, is to provide the necessary data base for identifying trends in the distribution of grain and oilseeds from North Dakota.

Scope of Report

Data are tabulated according to major characteristics which typically describe commodity flows. The major shipment characteristics considered are: destination, mode, origin, time and commodity. These characteristics are defined as follows:

- ◆ **Destination:** Minneapolis-St. Paul, Duluth-Superior, West (ID, OR, WA), and miscellaneous markets. Miscellaneous markets consist of Other Minnesota/Wisconsin, Midland/Southwest States (AR, AZ, CA, CO, IA, KS, LA, MO, MT, NE, NM, NV, OK, SD, TX, and WY), North Dakota and other destinations.
- ◆ **Mode:** Rail or truck. Rail includes Commodity Credit Corporation shipments.
- ◆ **Origin:** The nine crop reporting districts in North Dakota (Figure 1).
- ◆ **Time:** By month, from July 1992 to June 1993, and previous years.
- ◆ **Commodity:** Hard red spring wheat, durum, barley, sunflower, oats, soybeans, flax and corn.

Source of Data

The data used to analyze North Dakota grain distribution patterns for the period July 1992 through June 1993 were obtained from all country elevators in North Dakota. The data source is the North Dakota Public Service Commission's "Grain Movement Report." Every country elevator in North Dakota is required under state statute to assemble and submit a "Grain Movement Report" to the Public Service Commission on a monthly basis.

Organization of the Remainder of the Report

The same general commodity flow characteristics are considered in this report as in previous years' reports. Flow patterns for each type of grain are described in separate sections in the following order: (1) Total grain and oilseed shipments, (2) Hard red spring wheat, (3) Durum, (4) Barley, (5) Sunflower, (6) Oats, (7) Soybeans, (8) Flax, and (9) Corn.

Some small inconsistencies in totals may be noted when comparing tables and graphs due to rounding error.

1992-93 totals are preliminary, representing 99 percent of the required reports.

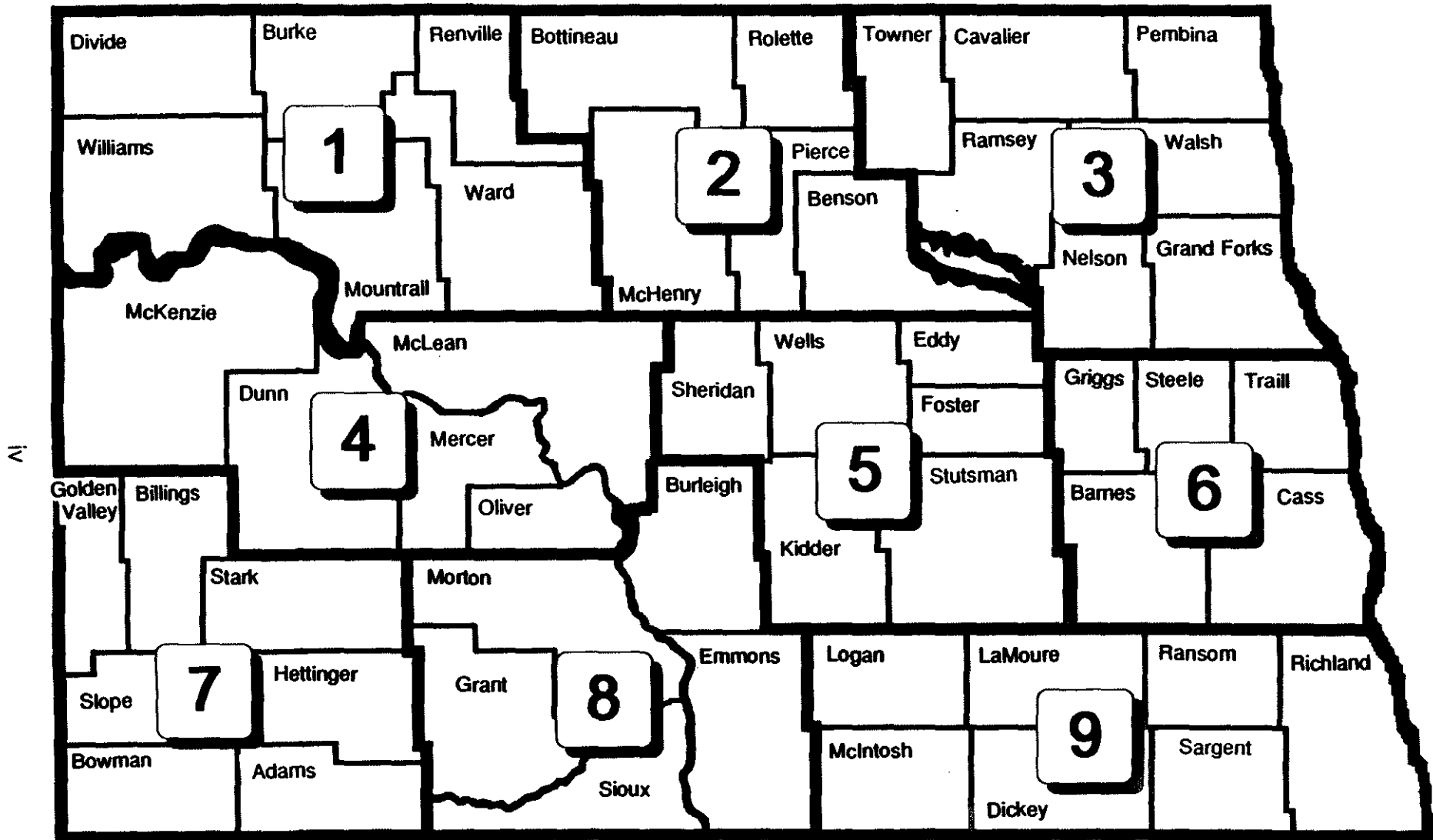


Figure 1. North Dakota Crop Reporting Districts and Counties.

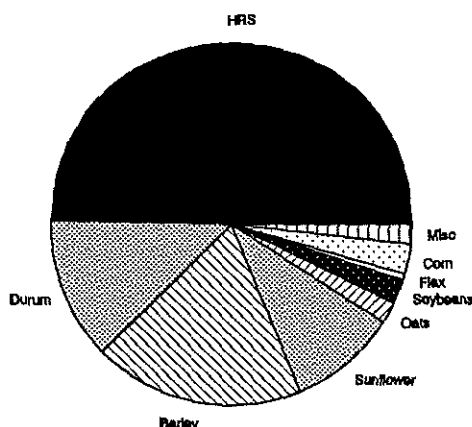
***TOTAL
GRAIN AND OILSEED
SHIPMENTS***



NORTH DAKOTA GRAIN AND OILSEED SHIPMENTS
1982-83 to 1992-93
(thousand bu.)

YEAR	HRS	DURUM	BARLEY	SUNFLOWER	OATS	SOYBEANS	FLAX	MISC.	CORN	TOTAL
1982-83	178,800 (36%)	79,132 (16%)	70,106 (14%)	121,744 (25%)	10,583 (2%)	7,687 (2%)	4,883 (1%)	8,219 (2%)	10,518 (2%)	491,671 (100%)
1983-84	163,305 (30%)	84,941 (16%)	106,645 (20%)	103,449 (19%)	21,261 (4%)	12,504 (2%)	4,235 (1%)	10,014 (2%)	32,463 (6%)	538,818 (100%)
1984-85	183,109 (36%)	80,670 (16%)	106,030 (21%)	77,412 (15%)	11,232 (2%)	14,292 (3%)	4,098 (1%)	12,389 (2%)	22,623 (4%)	511,855 (100%)
1985-86	181,089 (38%)	87,344 (18%)	105,436 (22%)	53,541 (11%)	7,706 (2%)	12,116 (3%)	5,503 (1%)	12,261 (3%)	13,394 (3%)	478,390 (100%)
1986-87	193,962 (34%)	104,968 (18%)	146,342 (26%)	61,067 (11%)	9,387 (2%)	9,990 (2%)	6,666 (1%)	12,500 (2%)	26,437 (5%)	571,319 (100%)
1987-88	187,835 (36%)	77,395 (15%)	104,399 (20%)	63,418 (12%)	15,577 (3%)	18,415 (4%)	6,110 (1%)	14,263 (3%)	30,426 (6%)	517,838 (100%)
1988-89	135,640 (36%)	43,906 (12%)	92,715 (25%)	39,056 (10%)	4,297 (1%)	12,160 (3%)	2,013 (1%)	13,243 (4%)	29,344 (8%)	372,376 (100%)
1989-90	192,485 (40%)	72,003 (15%)	112,256 (23%)	32,174 (7%)	5,015 (1%)	14,015 (3%)	1,077 (1%)	14,632 (3%)	34,764 (7%)	478,421 (100%)
1990-91	191,072 (38%)	78,309 (15%)	114,046 (23%)	37,086 (7%)	5,601 (1%)	10,185 (2%)	2,258 (0%)	39,229 (8%)	28,434 (6%)	506,220 (100%)
1991-92	261,169 (43%)	83,827 (14%)	124,755 (20%)	57,364 (9%)	7,601 (1%)	16,464 (3%)	4,058 (1%)	21,047 (3%)	36,084 (6%)	612,376 (100%)
1992-93	344,261 (49%)	88,080 (12%)	131,139 (19%)	66,965 (10%)	13,272 (2%)	15,528 (2%)	3,621 (1%)	12,257 (2%)	18,054 (3%)	704,083 (100%)

ALL SHIPMENTS
BY COMMODITY, 1992-93



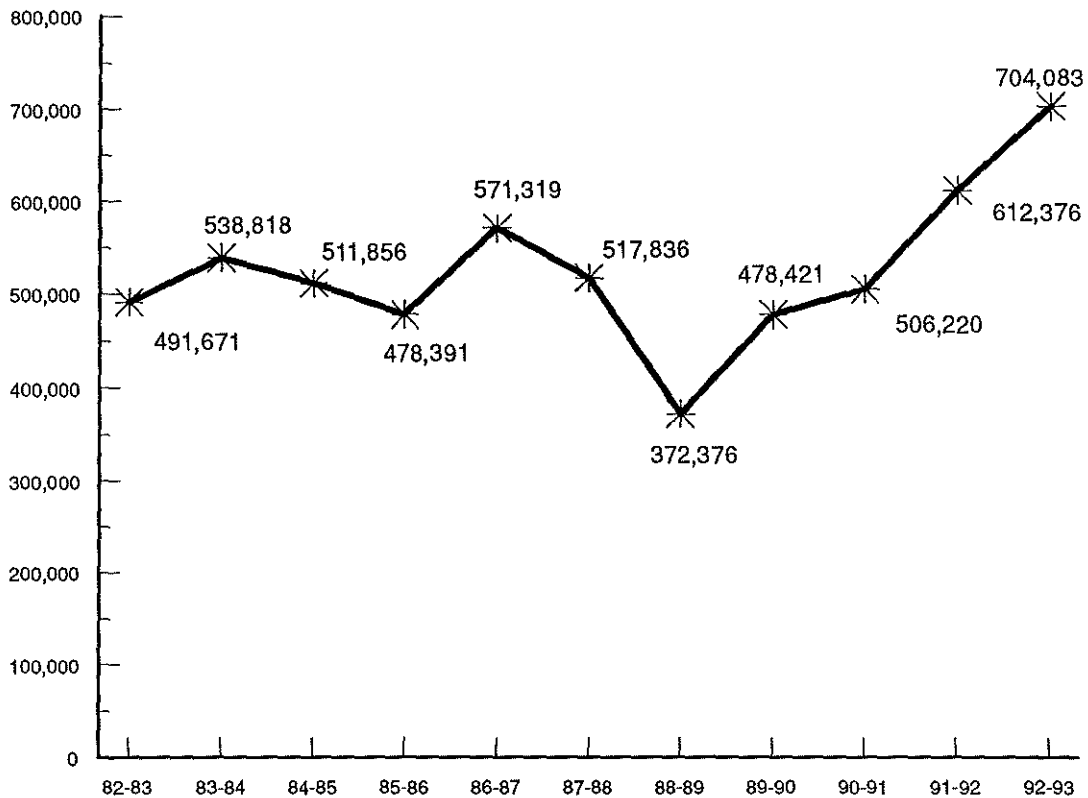
**NORTH DAKOTA GRAIN AND OILSEED SHIPMENTS
BY DESTINATION
1982-83 to 1992-93
(thousand bu.)**

YEAR	MINNEAPOLIS- ST. PAUL	DULUTH- SUPERIOR	WEST	NORTH DAKOTA	MISC. MARKETS	TOTAL
1982-83	122,745 (25%)	201,427 (41%)	45,240 (9%)	N/A	122,259 (25%)	491,671 (100%)
1983-84	134,312 (25%)	195,942 (36%)	59,203 (11%)	4,267 (1%)	145,095 (27%)	538,818 (100%)
1984-85	129,455 (25%)	178,299 (35%)	61,002 (12%)	41,521 (8%)	101,578 (20%)	511,856 (100%)
1985-86	131,879 (28%)	109,232 (23%)	44,812 (9%)	58,337 (12%)	134,130 (28%)	478,391 (100%)
1986-87	121,620 (21%)	119,016 (21%)	92,923 (16%)	66,874 (12%)	170,887 (33%)	571,319 (100%)
1987-88	124,984 (24%)	92,320 (18%)	64,727 (12%)	64,982 (13%)	170,823 (33%)	517,836 (100%)
1988-89	85,561 (23%)	50,767 (14%)	67,862 (18%)	50,854 (14%)	117,333 (31%)	372,376 (100%)
1989-90	107,958 (22%)	85,112 (18%)	67,347 (14%)	54,110 (11%)	163,894 (35%)	478,421 (100%)
1990-91	114,712 (23%)	80,740 (16%)	77,311 (15%)	61,987 (12%)	171,470 (34%)	506,220 (100%)
1991-92	134,437 (22%)	73,029 (12%)	75,720 (12%)	74,695 (12%)	254,491 (42%)	612,376 (100%)
1992-93	145,713 (21%)	82,087 (12%)	95,005 (13%)	89,780 (13%)	291,497 (41%)	704,083 (100%)

^aMiscellaneous markets include shipments to Midland/Southwest destinations, other Minnesota/Wisconsin destinations, and all other markets.

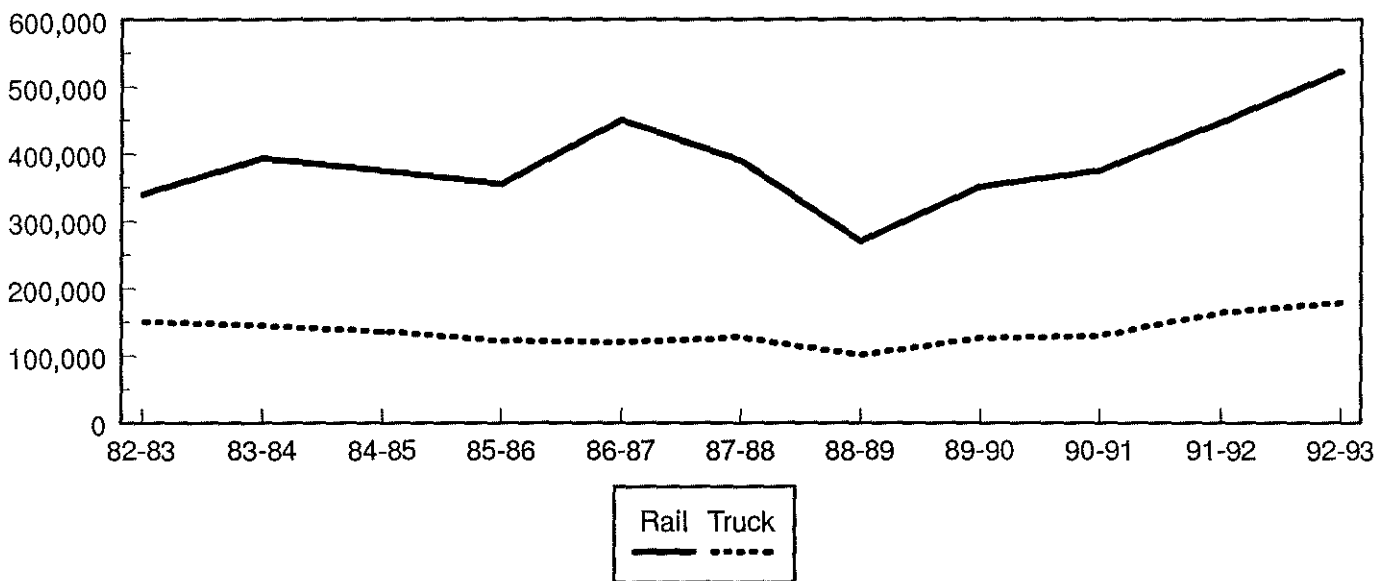
ALL COMMODITY SHIPMENTS 1982-83 to 1992-93

thousand bushels



ALL COMMODITY SHIPMENTS 1982-83 to 1992-93

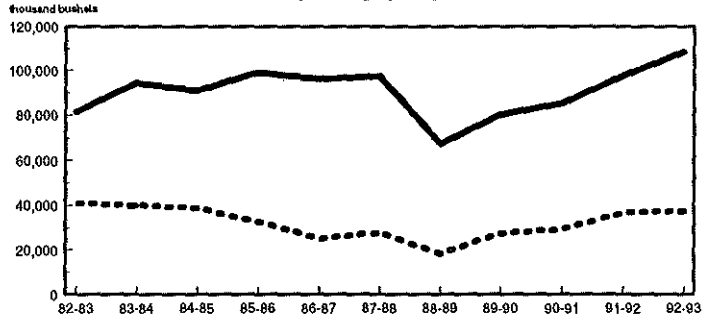
thousand bushels



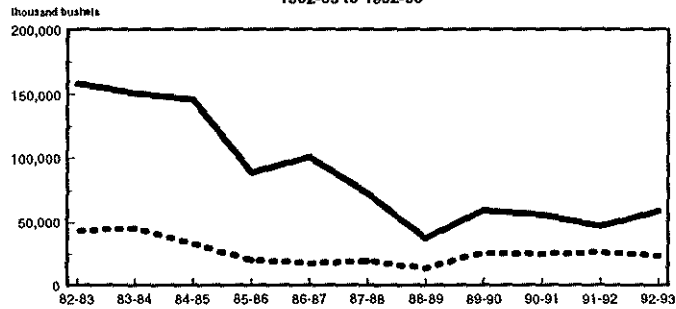
**NORTH DAKOTA GRAIN AND OILSEED SHIPMENTS
BY RAIL, TRUCK AND DESTINATION
(thousand bu.)**

YEAR	MINNEAPOLIS- ST. PAUL		DULUTH-SUPERIOR		WEST		MISC. MARKETS		TOTAL	
	RAIL	TRUCK	RAIL	TRUCK	RAIL	TRUCK	RAIL	TRUCK	RAIL	TRUCK
1982-83	81,525 (66%)	41,220 (34%)	158,282 (78%)	43,145 (21%)	30,108 (67%)	15,132 (33%)	70,546 (58%)	51,713 (42%)	340,461 (69%)	151,210 (31%)
1983-84	94,392 (70%)	39,920 (30%)	150,766 (77%)	45,176 (23%)	49,055 (83%)	10,148 (17%)	98,897 (66%)	50,465 (34%)	393,110 (73%)	145,709 (27%)
1984-85	90,807 (70%)	38,648 (30%)	145,495 (82%)	32,804 (18%)	51,786 (85%)	9,217 (15%)	86,921 (61%)	56,179 (39%)	375,009 (73%)	136,847 (27%)
1985-86	99,046 (75%)	32,833 (25%)	88,796 (81%)	20,436 (19%)	38,091 (85%)	6,722 (15%)	129,454 (67%)	63,013 (33%)	355,387 (74%)	123,004 (26%)
1986-87	96,166 (79%)	25,454 (21%)	101,009 (85%)	18,008 (15%)	87,738 (94%)	5,185 (6%)	165,655 (70%)	72,105 (30%)	450,569 (79%)	120,750 (21%)
1987-88	97,285 (78%)	27,699 (22%)	72,835 (79%)	19,485 (21%)	59,834 (92%)	4,893 (8%)	160,318 (68%)	75,487 (32%)	390,272 (75%)	127,564 (25%)
1988-89	67,358 (79%)	18,203 (21%)	37,044 (73%)	13,723 (27%)	62,570 (92%)	5,291 (8%)	103,988 (62%)	64,199 (38%)	270,961 (73%)	101,416 (27%)
1989-90	80,412 (74%)	27,546 (26%)	59,256 (70%)	25,857 (30%)	62,826 (93%)	4,520 (7%)	148,839 (68%)	69,165 (32%)	351,333 (73%)	127,088 (27%)
1990-91	85,295 (74%)	29,416 (26%)	55,844 (69%)	24,896 (31%)	74,543 (96%)	2,768 (4%)	160,029 (69%)	73,430 (31%)	375,712 (74%)	130,510 (26%)
1991-92	97,591 (73%)	36,846 (27%)	46,537 (64%)	26,492 (36%)	72,253 (95%)	3,466 (5%)	231,055 (70%)	98,129 (30%)	447,439 (73%)	164,937 (27%)
1992-93	108,441 (74%)	37,272 (26%)	59,021 (72%)	23,067 (28%)	90,912 (96%)	4,093 (4%)	265,465 (70%)	115,813 (30%)	523,839 (74%)	180,244 (26%)

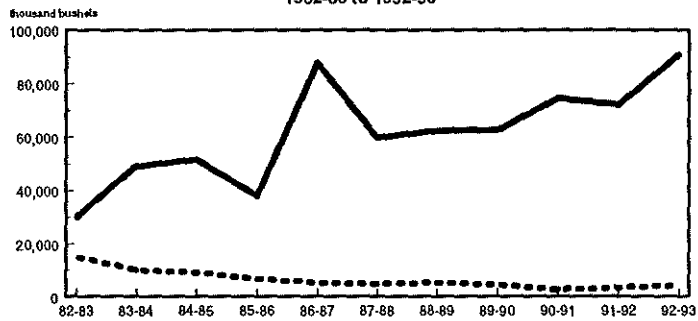
**ALL SHIPMENTS TO MINNEAPOLIS
1982-83 to 1992-93**



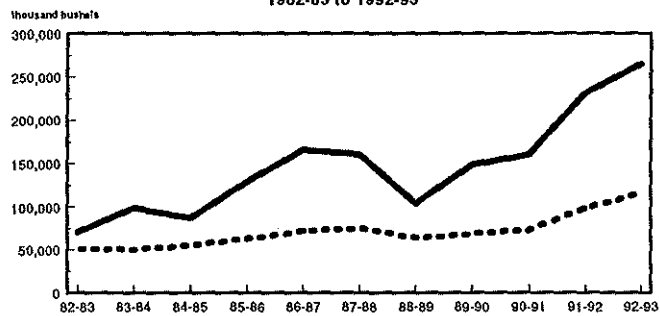
**ALL SHIPMENTS TO DULUTH-SUPERIOR
1982-83 to 1992-93**



**ALL SHIPMENTS TO WEST
1982-83 to 1992-93**



**ALL SHIPMENTS TO MISCELLANEOUS MARKETS
1982-83 to 1992-93**

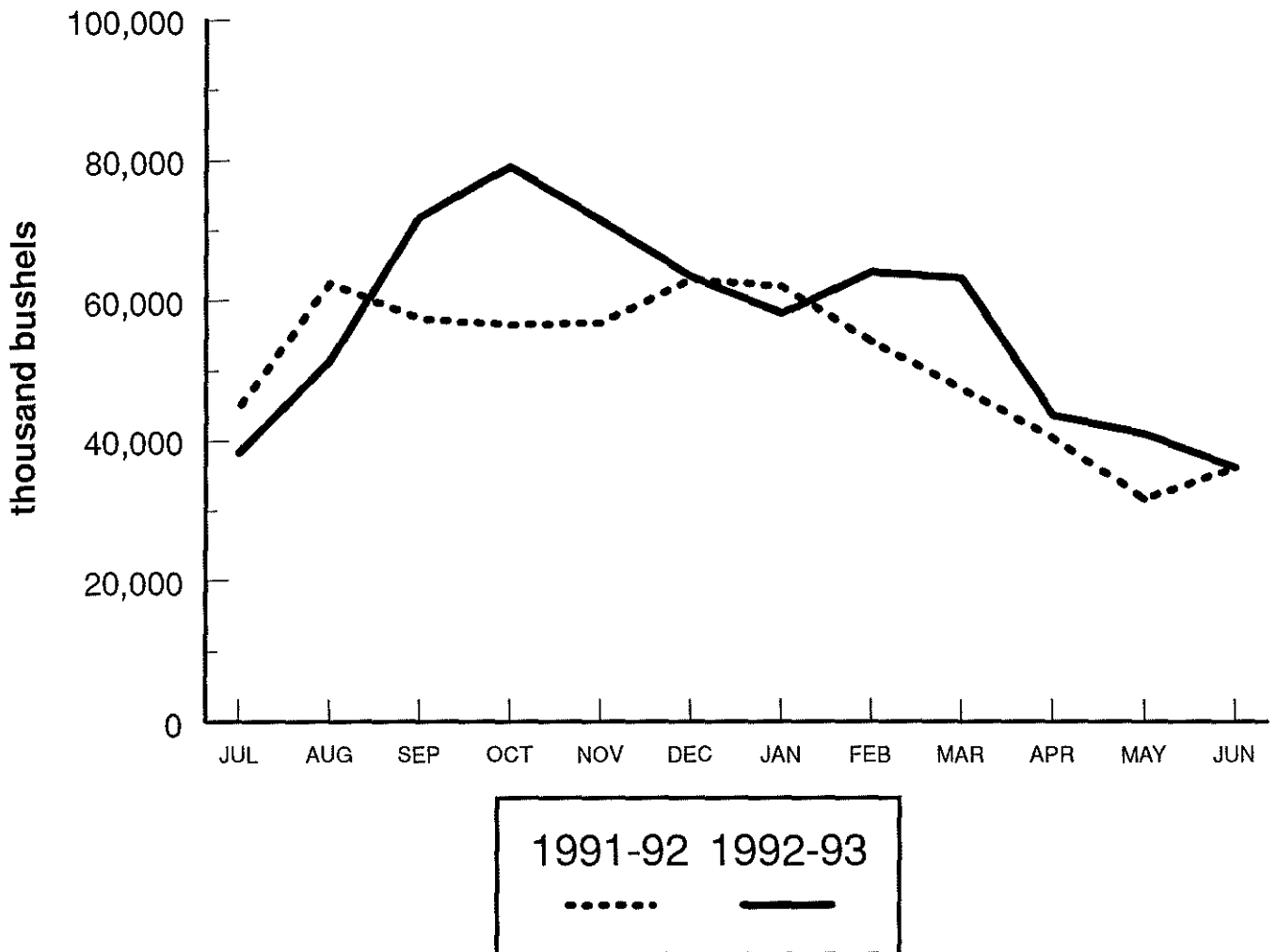


**NORTH DAKOTA GRAIN AND OILSEED MOVEMENTS
BY MONTH
July 1992 - June 1993
(thousand bu.)**

MONTH	HRS	DURUM	SOYB	FLAX	BARLEY	OATS	CORN	SF	MISC.	TOTAL
July	11,165	6,778	1,761	346	7,578	752	2,732	6,340	366	38,309
August	16,737	5,786	636	159	20,574	1,914	1,379	2,897	748	51,409
September	39,799	6,513	241	337	19,429	1,500	588	2,255	823	71,928
October	41,402	8,947	3,250	626	12,503	1,010	2,005	7,699	673	79,030
November	36,980	8,140	824	503	10,934	936	3,191	8,549	607	71,375
December	37,090	6,208	1,404	188	10,155	1,147	1,594	4,487	471	63,435
January	32,052	6,665	1,798	154	8,525	578	1,246	6,003	507	58,217
February	31,731	8,305	1,175	221	8,045	1,435	927	5,571	594	64,063
March	32,925	9,128	1,238	597	10,450	1,832	1,655	5,085	483	63,161
April	28,488	8,619	1,122	255	9,046	920	1,359	9,518	3,229	43,564
May	16,806	6,138	789	82	5,757	786	630	5,268	3,376	40,887
June	19,086	6,853	1,287	152	8,041	463	746	3,294	381	36,099
Total	344,261	88,080	131,139	66,965	13,272	15,528	3,621	12,257	18,054	704,083

ALL COMMODITY SHIPMENTS

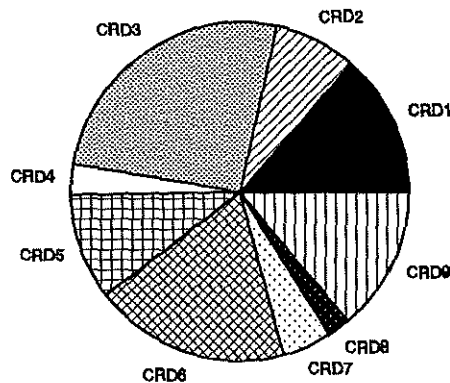
By Month, 1991-92 and 1992-93



**NORTH DAKOTA GRAIN AND OILSEED SHIPMENTS
BY CROP REPORTING DISTRICT ORIGIN
1982-83 to 1992-93
(thousand bu.)**

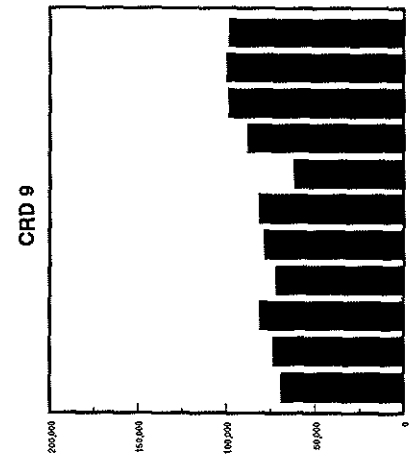
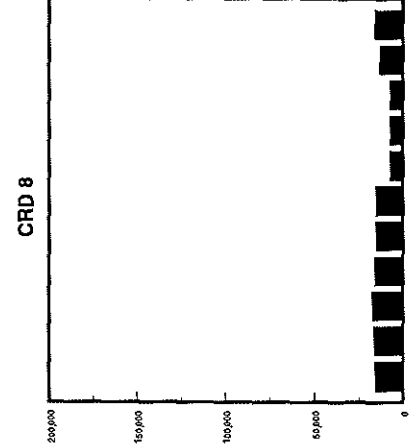
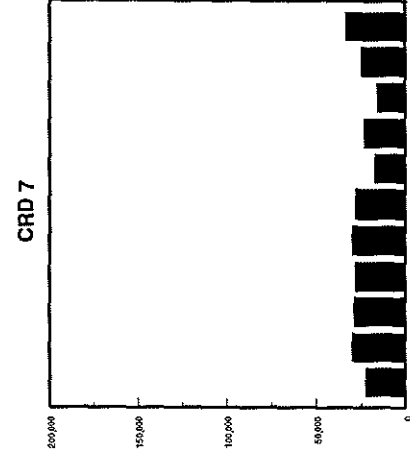
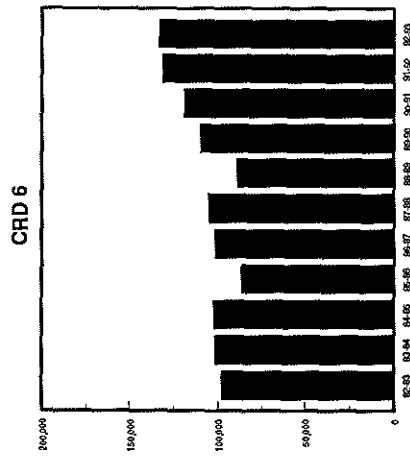
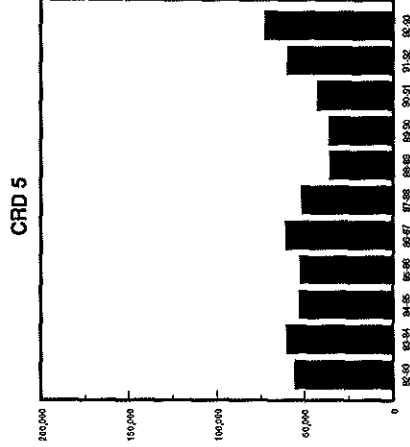
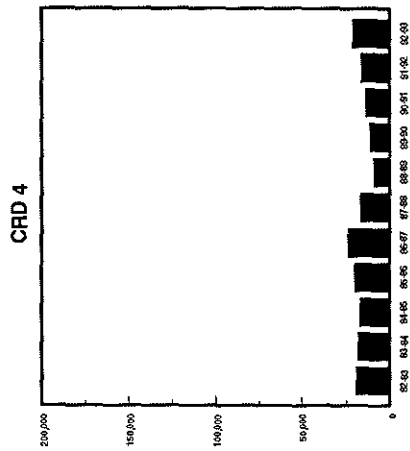
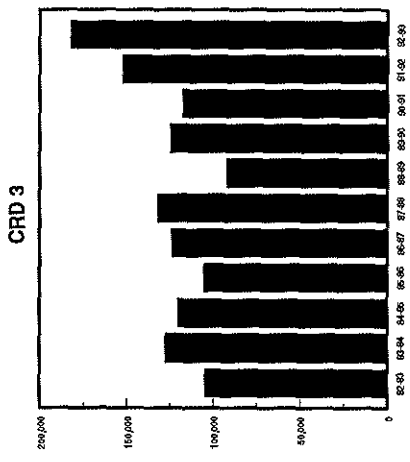
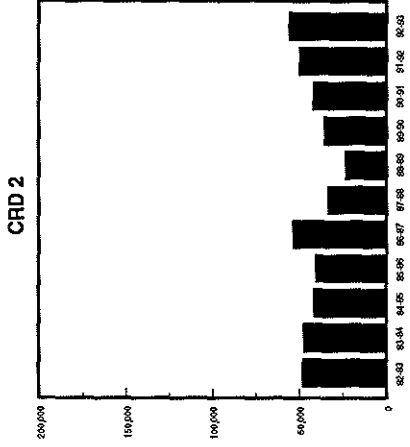
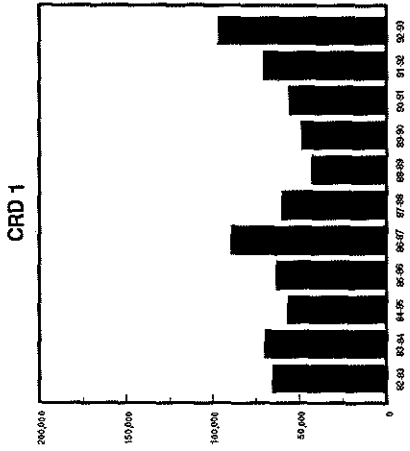
YEAR	Crop Reporting District									TOTAL
	1	2	3	4	5	6	7	8	9	
1982-83	64,835 (13%)	47,675 (10%)	103,975 (21%)	18,459 (4%)	54,562 (11%)	96,897 (20%)	21,755 (4%)	15,245 (3%)	68,266 (14%)	491,671 (100%)
1983-84	69,142 (13%)	46,862 (9%)	127,082 (24%)	17,675 (3%)	59,256 (11%)	100,845 (19%)	29,322 (5%)	15,796 (3%)	72,839 (14%)	538,818 (100%)
1984-85	56,106 (11%)	40,973 (9%)	119,549 (23%)	16,346 (3%)	51,963 (10%)	101,475 (20%)	28,236 (5%)	16,856 (3%)	80,352 (15%)	511,856 (100%)
1985-86	62,459 (13%)	39,674 (8%)	104,951 (22%)	19,241 (4%)	51,713 (11%)	86,015 (18%)	27,497 (6%)	15,567 (3%)	71,301 (15%)	478,391 (100%)
1986-87	88,714 (16%)	53,092 (9%)	123,222 (22%)	23,220 (4%)	59,899 (10%)	100,863 (18%)	29,473 (5%)	14,906 (3%)	77,929 (14%)	571,319 (100%)
1987-88	59,183 (11%)	32,984 (6%)	131,537 (25%)	16,035 (3%)	50,741 (10%)	104,169 (20%)	27,701 (5%)	14,721 (3%)	80,764 (16%)	517,835 (100%)
1988-89	41,877 (11%)	23,012 (6%)	91,616 (25%)	8,148 (2%)	34,629 (9%)	88,380 (24%)	16,943 (5%)	6,565 (2%)	61,205 (16%)	372,376 (100%)
1989-90	47,958 (10%)	35,000 (7%)	124,101 (26%)	10,596 (2%)	35,032 (7%)	109,025 (23%)	22,581 (5%)	6,830 (2%)	87,298 (18%)	478,421 (100%)
1990-91	55,109 (11%)	41,253 (8%)	117,055 (23%)	13,028 (3%)	41,778 (8%)	118,104 (23%)	15,336 (3%)	6,649 (1%)	97,908 (19%)	506,220 (100%)
1991-92	69,889 (11%)	49,595 (8%)	151,523 (25%)	15,580 (3%)	58,815 (10%)	130,741 (21%)	24,399 (4%)	12,668 (2%)	99,162 (16%)	612,376 (100%)
1992-93	96,075 (14%)	55,530 (8%)	181,745 (26%)	20,567 (3%)	71,819 (10%)	132,408 (19%)	32,897 (4%)	15,456 (2%)	97,586 (14%)	704,083 (100%)

**N.D. GRAIN AND OILSEED SHIPMENTS
BY CROP REPORTING DISTRICT ORIGIN
1992 - 1993**



ALL GRAIN AND OILSEED SHIPMENTS BY CROP REPORTING DISTRICT

(thousand bushels)





***HARD RED SPRING
WHEAT SHIPMENTS***

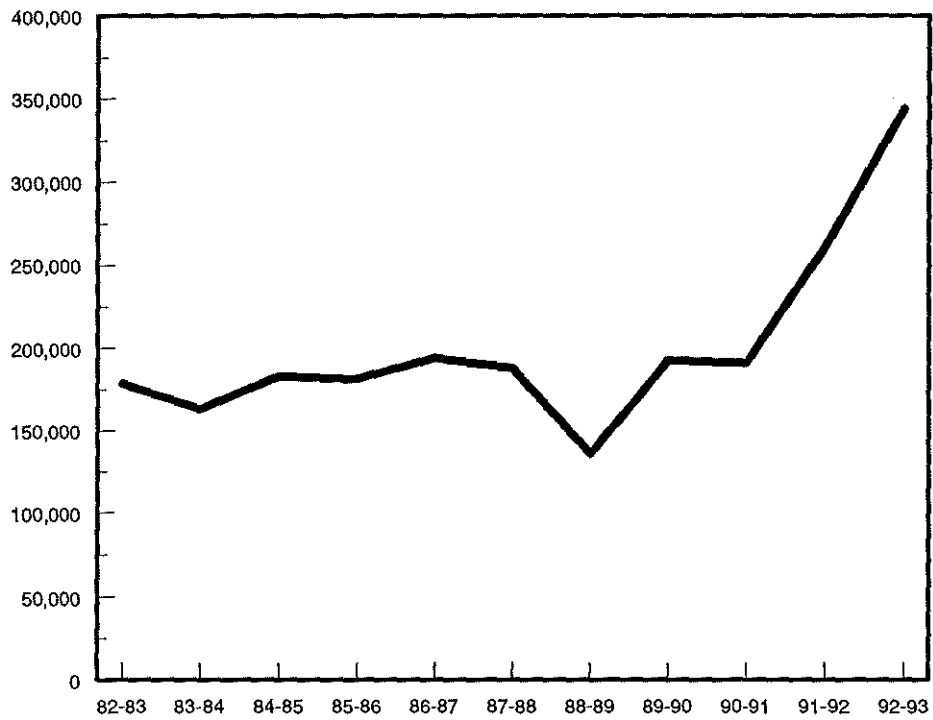
**NORTH DAKOTA HARD RED SPRING WHEAT SHIPMENTS
BY DESTINATION
(thousand bu.)**

YEAR	MINNEAPOLIS- ST. PAUL	DULUTH- SUPERIOR	WEST	MISC. MARKETS	TOTAL
1982-83	49,562 (28%)	79,160 (44%)	34,527 (19%)	15,550 (9%)	178,800 (100%)
1983-84	48,696 (30%)	66,518 (41%)	29,091 (18%)	19,000 (12%)	163,305 (100%)
1984-85	66,796 (36%)	56,002 (31%)	28,452 (16%)	31,859 (17%)	183,109 (100%)
1985-86	68,458 (38%)	48,723 (27%)	21,311 (12%)	42,597 (24%)	181,088 (100%)
1986-87	59,020 (30%)	51,564 (27%)	24,446 (13%)	28,933 (30%)	193,962 (100%)
1987-88	62,463 (33%)	36,755 (20%)	23,549 (13%)	65,069 (34%)	187,836 (100%)
1988-89	42,265 (31%)	26,239 (19%)	29,789 (29%)	37,347 (28%)	135,640 (100%)
1989-90	58,880 (31%)	38,510 (20%)	25,131 (13%)	69,964 (36%)	192,485 (100%)
1990-91	56,356 (29%)	39,229 (21%)	39,521 (21%)	55,966 (29%)	191,072 (100%)
1991-92	74,751 (29%)	23,891 (9%)	29,125 (11%)	133,400 (51%)	261,169 (100%)
1992-93	81,210 (24%)	38,573 (11%)	62,458 (18%)	162,021 ^a (47%)	344,261 (100%)

^aMiscellaneous markets include shipments to Midland/Southwest destinations (19%), other Minnesota/Wisconsin destinations (9%), and all other markets including North Dakota processors (19%).

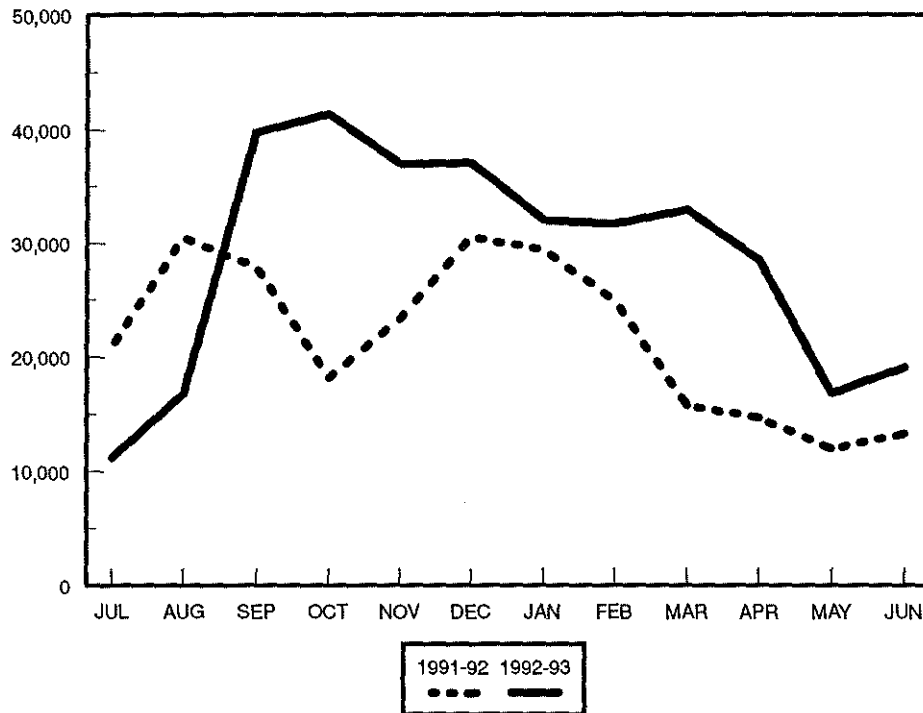
HRS WHEAT SHIPMENTS 1982-83 to 1992-93

thousand bushels



HRS WHEAT SHIPMENTS BY MONTH, 1991-92 TO 1992-93

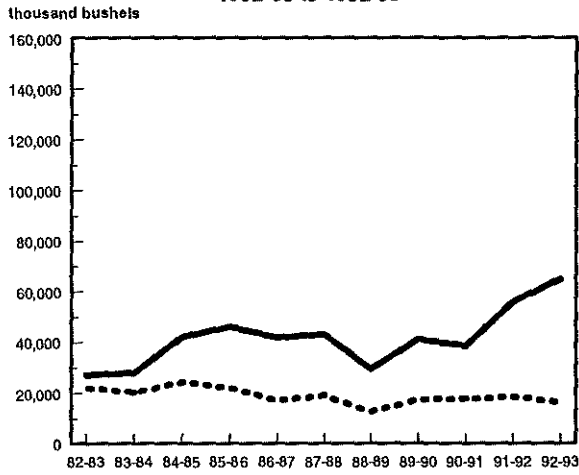
thousand bushels



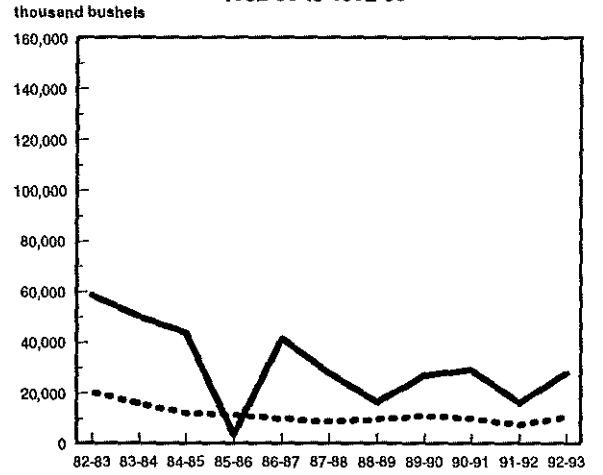
**NORTH DAKOTA HARD RED SPRING WHEAT SHIPMENTS
BY RAIL, TRUCK AND DESTINATION
(thousand bu.)**

YEAR	MINNEAPOLIS - ST. PAUL		DULUTH - SUPERIOR		WEST		MISC. MARKETS		TOTAL	
	Rail	Truck	Rail	Truck	Rail	Truck	Rail	Truck	Rail	Truck
1982-83	27,413 (55%)	22,149 (45%)	58,601 (74%)	20,559 (26%)	23,371 (68%)	11,156 (32%)	9,798 (63%)	5,752 (37%)	119,183 (67%)	59,616 (33%)
1983-84	28,084 (49%)	20,609 (37%)	50,383 (78%)	16,136 (22%)	20,523 (75%)	8,568 (25%)	13,020 (71%)	5,980 (29%)	112,010 (71%)	51,293 (29%)
1984-85	42,183 (63%)	24,613 (37%)	43,780 (78%)	12,223 (22%)	21,322 (75%)	7,130 (25%)	22,765 (71%)	9,094 (29%)	130,050 (71%)	53,061 (25%)
1985-86	46,269 (68%)	22,189 (32%)	37,313 (77%)	11,409 (23%)	16,478 (77%)	4,832 (23%)	31,648 (74%)	10,948 (26%)	131,709 (73%)	49,379 (27%)
1986-87	41,857 (71%)	17,163 (29%)	41,516 (81%)	10,048 (19%)	20,491 (84%)	3,955 (16%)	49,533 (84%)	9,399 (16%)	153,397 (79%)	40,565 (21%)
1987-88	43,082 (69%)	19,381 (31%)	27,911 (76%)	8,844 (24%)	20,068 (85%)	3,481 (15%)	49,838 (77%)	15,231 (23%)	140,899 (75%)	46,937 (25%)
1988-89	29,566 (70%)	12,700 (30%)	16,414 (63%)	9,825 (37%)	25,688 (86%)	4,100 (14%)	27,697 (74%)	9,650 (26%)	99,365 (73%)	36,275 (27%)
1989-90	41,249 (70%)	17,631 (30%)	27,148 (70%)	11,362 (30%)	21,552 (86%)	3,578 (14%)	57,236 (82%)	12,728 (18%)	147,186 (76%)	45,299 (24%)
1990-91	38,707 (69%)	17,649 (31%)	29,079 (74%)	10,150 (26%)	37,359 (95%)	2,162 (5%)	45,281 (81%)	10,685 (19%)	150,426 (79%)	40,646 (21%)
1991-92	55,940 (75%)	18,811 (25%)	16,154 (68%)	7,737 (32%)	27,087 (83%)	2,037 (17%)	116,553 (87%)	16,843 (13%)	215,738 (83%)	45,431 (17%)
1992-93	65,059 (80%)	16,150 (20%)	27,958 (72%)	10,616 (28%)	60,140 (96%)	2,317 (4%)	148,773 (92%)	13,247 (8%)	301,930 (88%)	42,331 (12%)

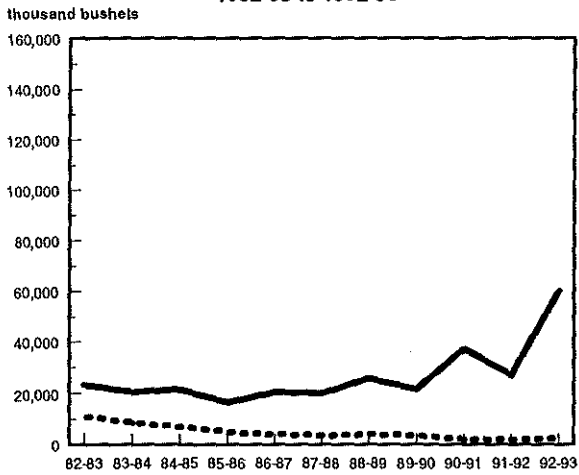
**HRS WHEAT TO MINNEAPOLIS
1982-83 to 1992-93**



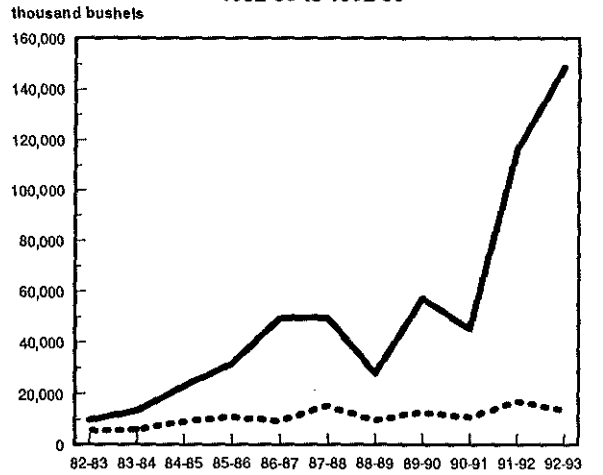
**HRS WHEAT TO DULUTH-SUPERIOR
1982-83 to 1992-93**



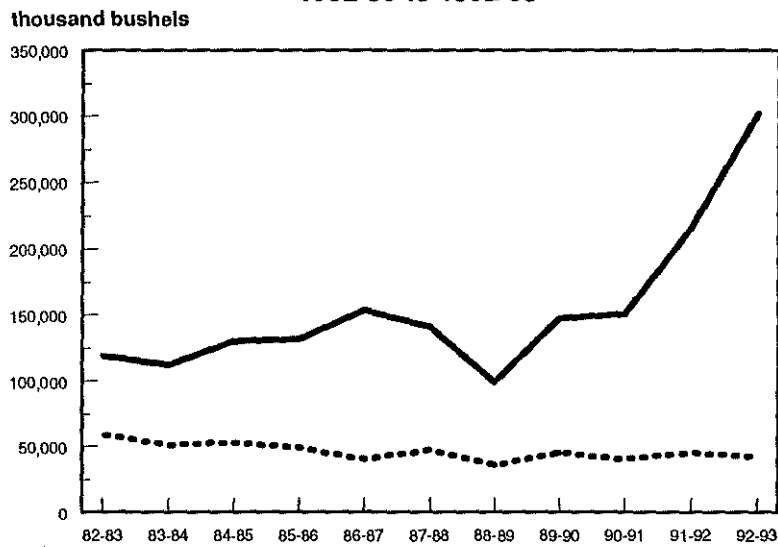
**HRS WHEAT TO WEST
1982-83 to 1992-93**

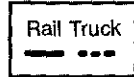


**HRS WHEAT TO MISCELLANEOUS MARKETS
1982-83 to 1992-93**



**HRS WHEAT SHIPMENTS
1982-83 to 1992-93**

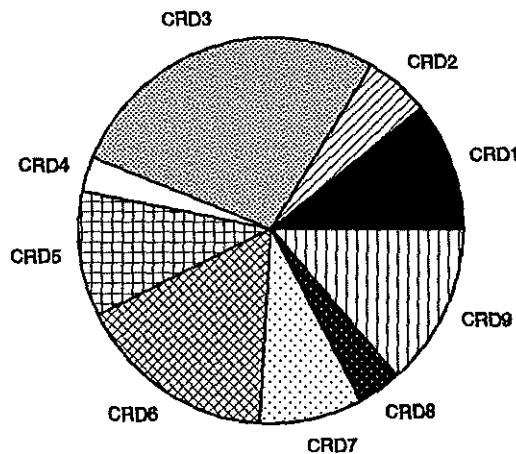


Rail Truck


**NORTH DAKOTA HARD RED SPRING WHEAT MOVEMENTS
BY CROP REPORTING DISTRICT ORIGIN
(thousand bu.)**

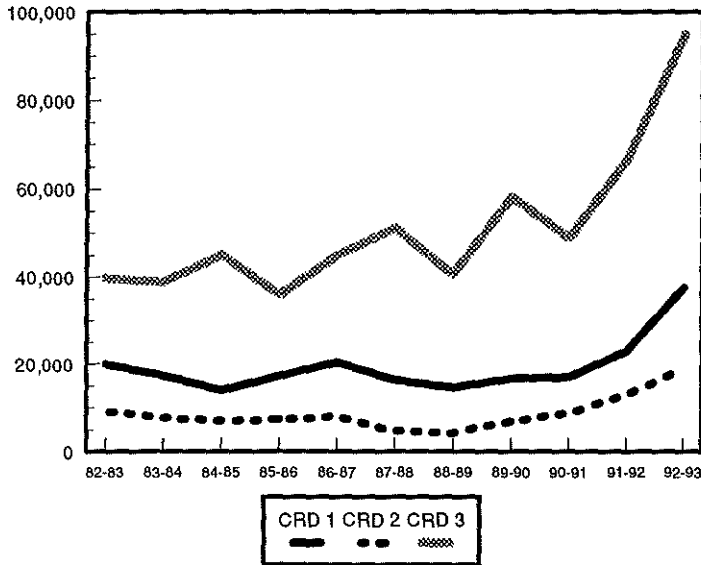
YEAR	Crop Reporting District									TOTAL
	1	2	3	4	5	6	7	8	9	
1982-83	20,007 (11%)	9,074 (5%)	39,668 (22%)	9,217 (5%)	15,149 (8%)	33,061 (18%)	17,568 (10%)	11,457 (6%)	23,599 (13%)	178,800 (100%)
1983-84	17,360 (11%)	7,662 (5%)	38,766 (24%)	7,121 (4%)	16,189 (10%)	27,265 (17%)	19,397 (12%)	9,518 (6%)	20,027 (12%)	163,305 (100%)
1984-85	13,898 (8%)	7,035 (4%)	45,117 (25%)	5,923 (3%)	17,297 (9%)	36,598 (20%)	18,091 (10%)	10,937 (6%)	28,213 (15%)	183,109 (100%)
1985-86	17,154 (9%)	7,247 (4%)	35,921 (20%)	7,160 (4%)	23,066 (13%)	30,432 (17%)	21,285 (12%)	11,428 (6%)	27,395 (15%)	181,089 (100%)
1986-87	20,393 (11%)	7,885 (4%)	44,955 (23%)	8,137 (4%)	24,189 (12%)	32,423 (17%)	20,379 (11%)	10,701 (6%)	24,901 (13%)	193,962 (100%)
1987-88	16,285 (9%)	4,600 (2%)	51,209 (27%)	6,060 (3%)	18,106 (10%)	37,842 (18%)	19,422 (12%)	9,545 (5%)	24,766 (13%)	187,835 (100%)
1988-89	14,445 (10%)	4,157 (3%)	40,595 (29%)	3,595 (3%)	12,453 (9%)	26,334 (19%)	13,016 (9%)	4,373 (3%)	16,673 (12%)	135,640 (100%)
1989-90	16,523 (9%)	6,775 (4%)	58,154 (30%)	4,477 (2%)	15,229 (8%)	40,511 (21%)	18,217 (9%)	5,043 (3%)	27,556 (14%)	192,485 (100%)
1990-91	16,896 (9%)	8,751 (5%)	48,869 (26%)	5,299 (3%)	20,484 (11%)	46,365 (24%)	12,921 (7%)	5,890 (3%)	25,597 (13%)	191,072 (100%)
1991-92	22,914 (9%)	12,920 (5%)	66,696 (26%)	7,854 (3%)	28,334 (11%)	53,005 (20%)	21,429 (8%)	11,389 (4%)	36,623 (14%)	261,169 (100%)
1992-93	37,519 (10%)	18,768 (5%)	94,790 (28%)	10,260 (5%)	36,094 (10%)	57,697 (17%)	29,701 (9%)	12,519 (4%)	46,910 (14%)	344,261 (100%)

**HARD RED SPRING WHEAT MOVEMENTS
BY CROP REPORTING DISTRICT ORIGIN
1992 - 1993**

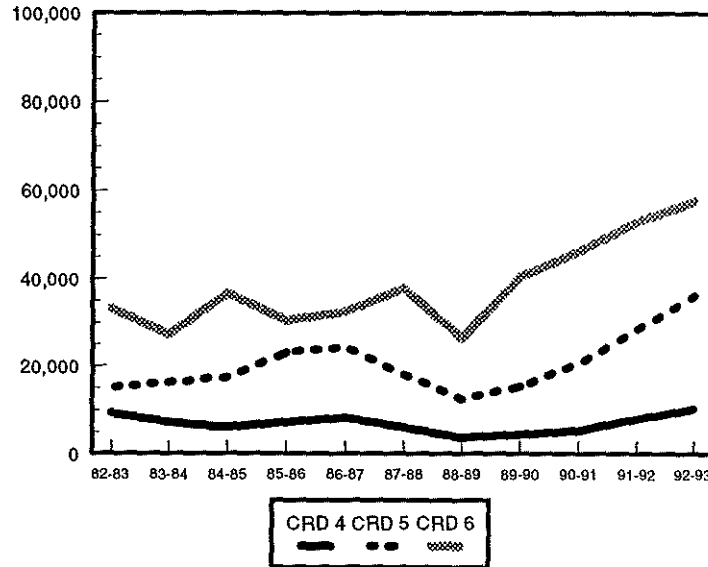


HARD RED SPRING WHEAT SHIPMENTS BY CROP REPORTING DISTRICT

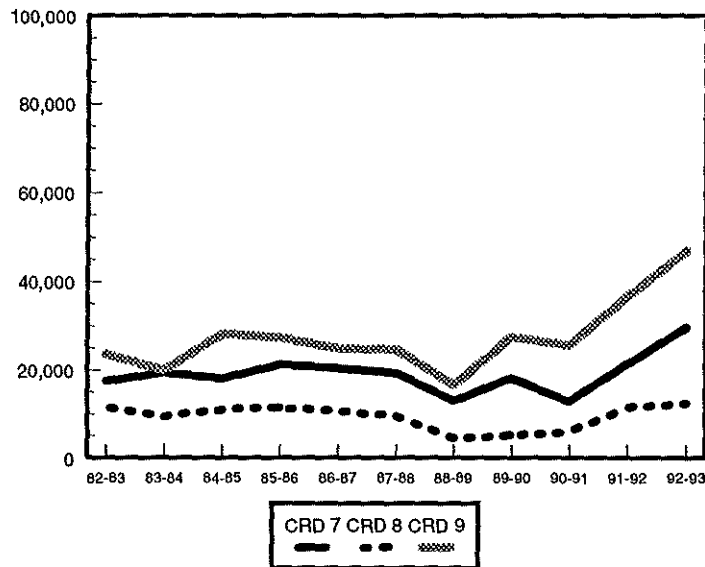
BY NORTHERN CROP REPORTING DISTRICTS
(thousand bushels)



BY CENTRAL CROP REPORTING DISTRICTS
(thousand bushels)



SOUTHERN CROP REPORTING DISTRICTS
(thousand bushels)





***DURUM
SHIPMENTS***

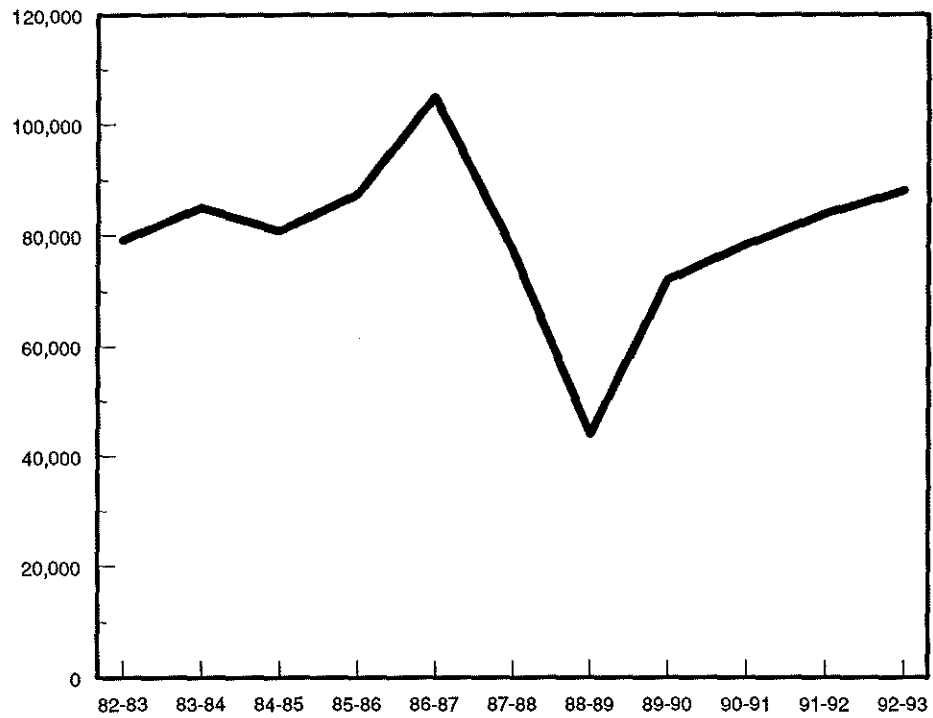
**NORTH DAKOTA DURUM SHIPMENTS
BY DESTINATION
(thousand bu.)**

YEAR	MINNEAPOLIS - ST. PAUL	DULUTH - SUPERIOR	WEST	MISC. MARKETS	TOTAL
1982-83	22,010 (28%)	42,820 (54%)	735 (1%)	13,567 (17%)	79,132 (100%)
1983-84	23,842 (28%)	43,143 (51%)	1,379 (2%)	16,578 (20%)	84,941 (100%)
1984-85	18,352 (23%)	48,137 (60%)	1,420 (2%)	12,761 (16%)	80,670 (100%)
1985-86	23,498 (27%)	38,026 (44%)	2,925 (3%)	22,895 (26%)	87,344 (100%)
1986-87	17,350 (17%)	46,150 (44%)	2,969 (3%)	38,498 (37%)	104,968 (100%)
1987-88	15,347 (20%)	28,215 (36%)	1,183 (2%)	32,649 (42%)	77,394 (100%)
1988-89	10,665 (24%)	10,033 (23%)	1,437 (3%)	21,769 (50%)	43,905 (100%)
1989-90	15,612 (22%)	21,103 (29%)	1,127 (2%)	34,161 (47%)	72,003 (100%)
1990-91	18,159 (23%)	24,167 (31%)	929 (1%)	35,054 (45%)	78,309 (100%)
1991-92	16,379 (20%)	26,063 (31%)	1,191 (1%)	40,191 (48%)	83,827 (100%)
1992-93	19,434 (22%)	20,627 (23%)	2,424 (3%)	45,596 ^a (52%)	88,080 (100%)

^a Miscellaneous markets include shipments to Midland/Southwest destinations (18%), other Minnesota/Wisconsin destinations (13%), and all other markets including North Dakota processors (21%).

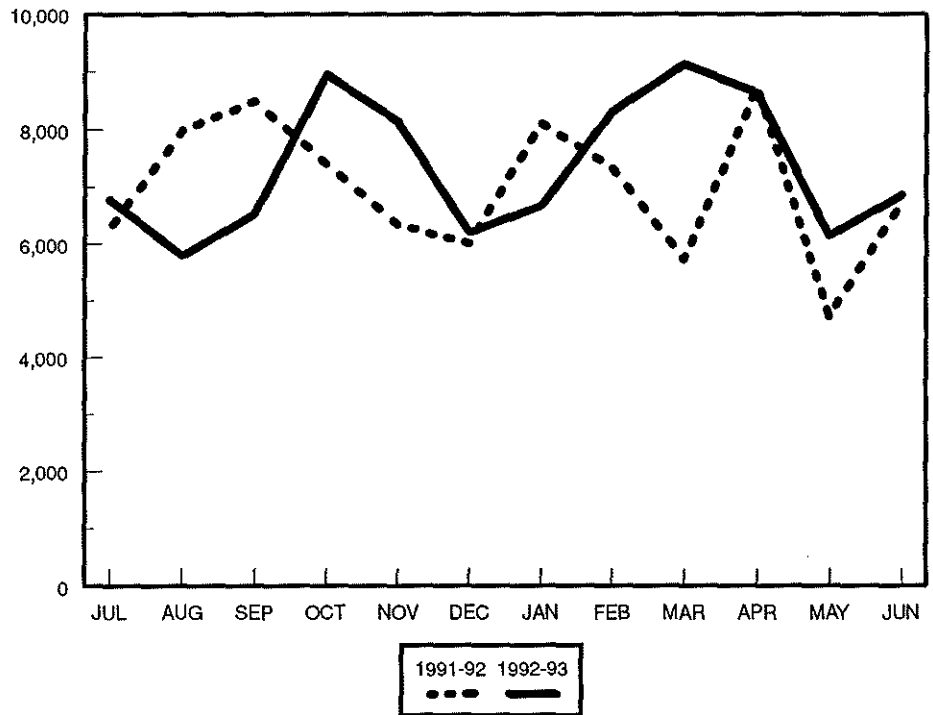
DURUM SHIPMENTS 1982-83 to 1992-93

thousand bushels



DURUM SHIPMENTS BY MONTH, 1991-92 TO 1992-93

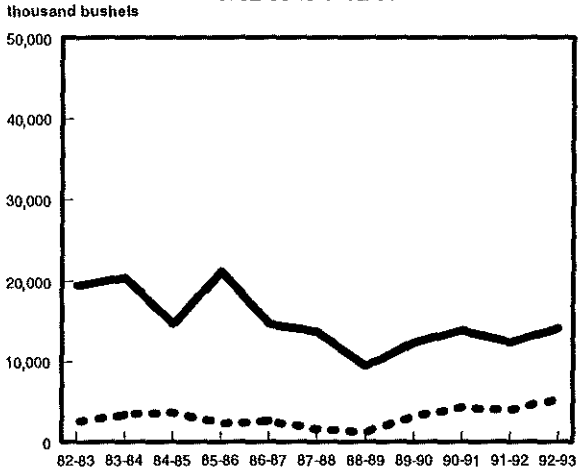
thousand bushels



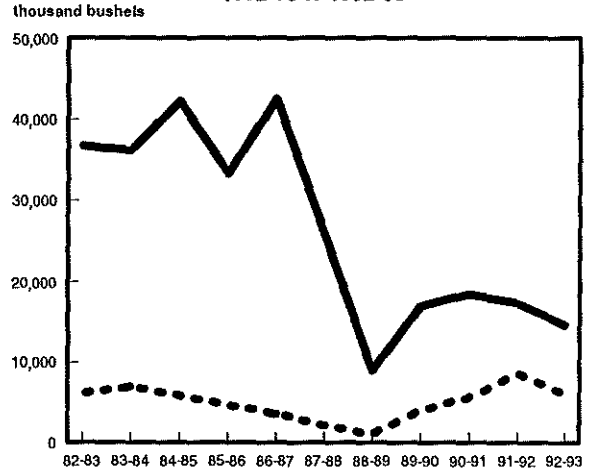
**NORTH DAKOTA DURUM SHIPMENTS
BY RAIL, TRUCK AND DESTINATION
(thousand bu.)**

YEAR	MINNEAPOLIS - ST. PAUL		DULUTH - SUPERIOR		WEST		MISC. MARKETS		TOTAL	
	Rail	Truck	Rail	Truck	Rail	Truck	Rail	Truck	Rail	Truck
1982-83	19,464 (88%)	2,546 (12%)	36,670 (86%)	6,149 (14%)	541 (73%)	194 (26%)	10,034 (74%)	3,533 (26%)	66,710 (84%)	12,422 (16%)
1983-84	20,380 (86%)	3,462 (14%)	36,166 (84%)	6,976 (16%)	1,322 (96%)	56 (4%)	14,546 (88%)	2,032 (12%)	72,415 (85%)	12,527 (15%)
1984-85	14,652 (80%)	3,700 (20%)	42,238 (88%)	5,899 (12%)	1,241 (87%)	180 (13%)	9,856 (77%)	2,905 (23%)	67,987 (84%)	12,684 (16%)
1985-86	21,191 (90%)	2,307 (10%)	33,330 (88%)	4,695 (12%)	2,850 (97%)	75 (3%)	18,695 (82%)	4,200 (18%)	76,067 (87%)	11,278 (13%)
1986-87	14,679 (85%)	2,671 (15%)	42,543 (92%)	3,608 (8%)	2,932 (99%)	37 (1%)	34,843 (91%)	3,656 (9%)	94,996 (91%)	9,972 (9%)
1987-88	13,662 (89%)	1,685 (11%)	25,969 (92%)	2,246 (6%)	1,110 (94%)	73 (6%)	26,542 (81%)	6,107 (19%)	67,283 (87%)	10,111 (13%)
1988-89	9,421 (88%)	1,244 (12%)	8,995 (90%)	1,037 (10%)	1,426 (99%)	10 (1%)	15,444 (71%)	6,324 (29%)	35,288 (80%)	8,617 (20%)
1989-90	12,346 (79%)	3,265 (21%)	17,022 (81%)	4,081 (19%)	1,118 (99%)	8 (1%)	28,039 (82%)	6,123 (18%)	58,525 (81%)	13,478 (19%)
1990-91	13,842 (76%)	4,317 (24%)	18,463 (76%)	5,705 (24%)	914 (98%)	15 (2%)	28,391 (81%)	6,662 (19%)	61,610 (79%)	16,699 (21%)
1991-92	12,373 (76%)	4,005 (24%)	17,382 (67%)	8,680 (33%)	1,149 (96%)	42 (4%)	18,479 (78%)	5,162 (22%)	65,658 (78%)	18,168 (22%)
1992-93	14,129 (73%)	5,305 (27%)	14,565 (71%)	6,062 (29%)	2,317 (96%)	106 (4%)	39,340 (86%)	6,256 (14%)	70,351 (80%)	17,730 (20%)

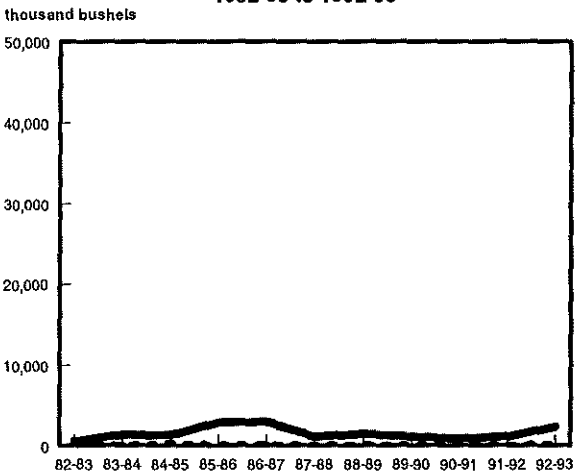
DURUM TO MINNEAPOLIS
1982-83 to 1992-93



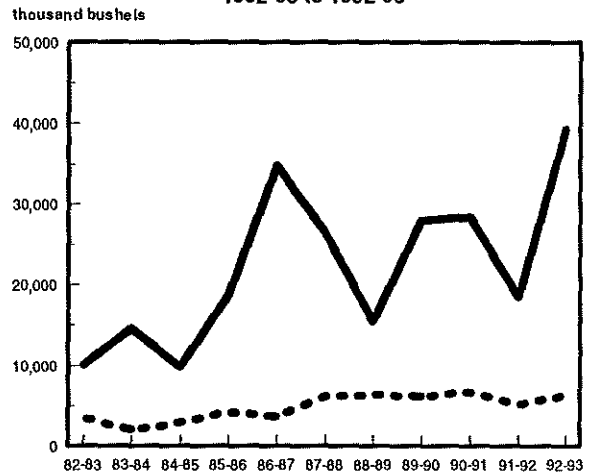
DURUM TO DULUTH-SUPERIOR
1982-83 to 1992-93



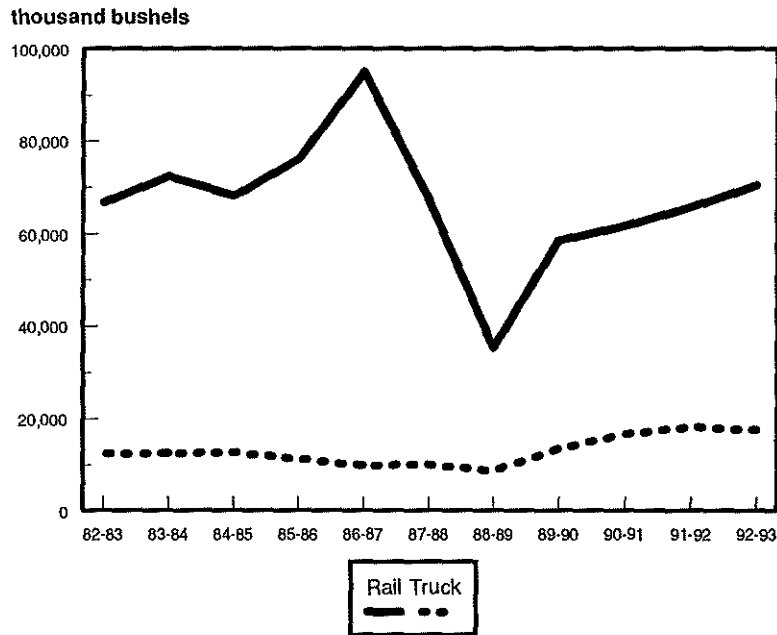
DURUM TO WEST
1982-83 to 1992-93



DURUM TO MISCELLANEOUS MARKETS
1982-83 to 1992-93



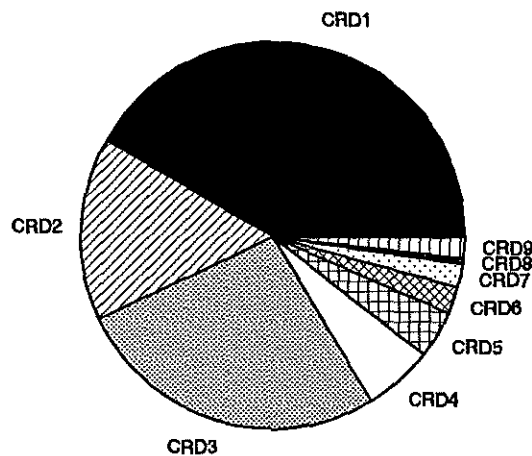
DURUM SHIPMENTS
1982-83 to 1992-93



**NORTH DAKOTA DURUM SHIPMENTS
BY CROP REPORTING DISTRICT ORIGIN
(thousand bu.)**

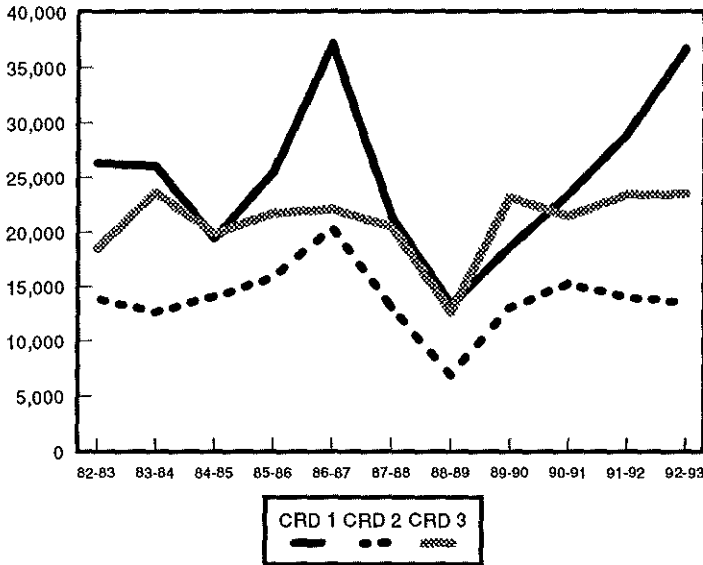
YEAR	Crop Reporting District									TOTAL
	1	2	3	4	5	6	7	8	9	
1982-83	26,387 (33%)	13,835 (17%)	18,509 (23%)	3,906 (5%)	6,237 (8%)	4,446 (6%)	2,268 (3%)	616 (1%)	2,929 (4%)	79,132 (100%)
1983-84	26,080 (31%)	12,612 (15%)	23,621 (28%)	4,405 (5%)	7,531 (9%)	3,644 (4%)	3,349 (4%)	629 (1%)	3,070 (4%)	84,941 (100%)
1984-85	19,441 (24%)	14,079 (17%)	19,872 (25%)	4,423 (5%)	9,092 (11%)	5,115 (6%)	3,341 (4%)	795 (1%)	4,511 (6%)	80,670 (100%)
1985-86	25,555 (29%)	15,786 (18%)	21,760 (25%)	5,956 (7%)	6,383 (7%)	4,246 (5%)	2,192 (3%)	553 (1%)	4,915 (6%)	87,344 (100%)
1986-87	37,163 (35%)	20,465 (19%)	22,148 (21%)	7,038 (7%)	7,989 (7%)	3,536 (3%)	3,421 (3%)	505 (0%)	2,703 (3%)	104,968 (100%)
1987-88	21,414 (28%)	13,049 (17%)	20,479 (26%)	3,272 (4%)	6,993 (9%)	3,455 (4%)	3,552 (5%)	472 (1%)	4,707 (6%)	77,393 (100%)
1988-89	13,346 (30%)	6,820 (16%)	12,607 (29%)	1,671 (4%)	2,919 (7%)	2,596 (6%)	1,394 (3%)	229 (1%)	2,320 (5%)	43,902 (100%)
1989-90	18,690 (26%)	13,063 (18%)	23,198 (32%)	4,035 (6%)	4,013 (5%)	2,703 (4%)	2,991 (4%)	478 (1%)	2,832 (4%)	72,003 (100%)
1990-91	23,441 (30%)	15,241 (19%)	21,489 (27%)	4,446 (6%)	5,039 (6%)	3,641 (5%)	2,008 (3%)	175 (0%)	2,829 (4%)	78,309 (100%)
1991-92	28,978 (35%)	14,003 (17%)	23,461 (28%)	5,114 (6%)	4,269 (5%)	3,485 (4%)	1,874 (2%)	193 (0%)	2,445 (3%)	83,827 (100%)
1992-93	36,682 (42%)	13,516 (15%)	23,491 (27%)	5,136 (6%)	3,547 (4%)	2,012 (2%)	1,711 (2%)	430 (0%)	1,551 (2%)	88,080 (100%)

**DURUM SHIPMENTS
BY CROP REPORTING DISTRICT ORIGIN
1992 - 1993**

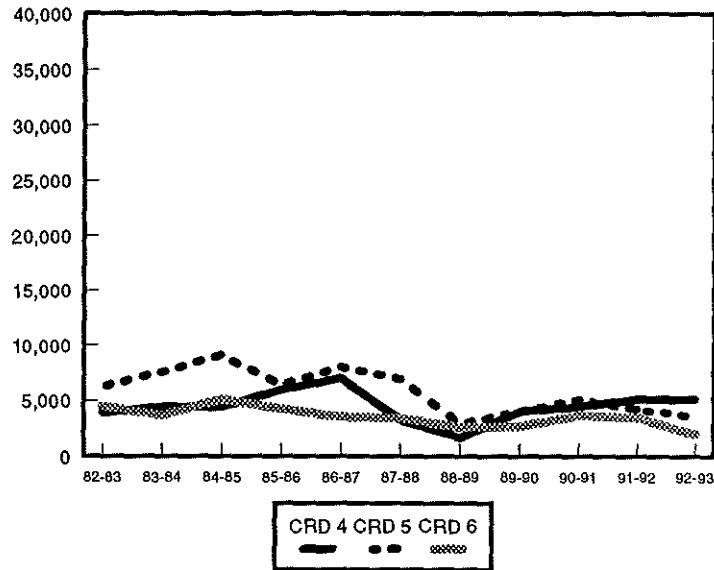


DURUM SHIPMENTS BY CROP REPORTING DISTRICT

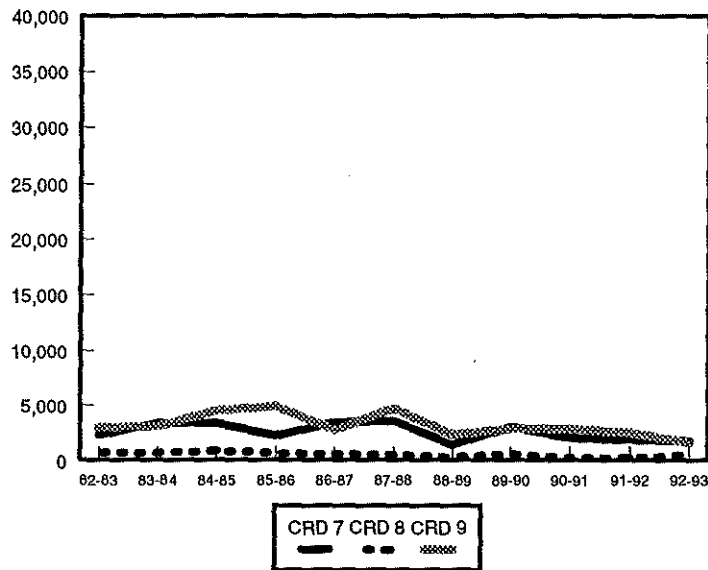
BY NORTHERN CROP REPORTING DISTRICTS
(thousand bushels)



BY CENTRAL CROP REPORTING DISTRICTS
(thousand bushels)



SOUTHERN CROP REPORTING DISTRICTS
(thousand bushels)





***BARLEY
SHIPMENTS***

**NORTH DAKOTA BARLEY SHIPMENTS
BY DESTINATION
(thousand bu.)**

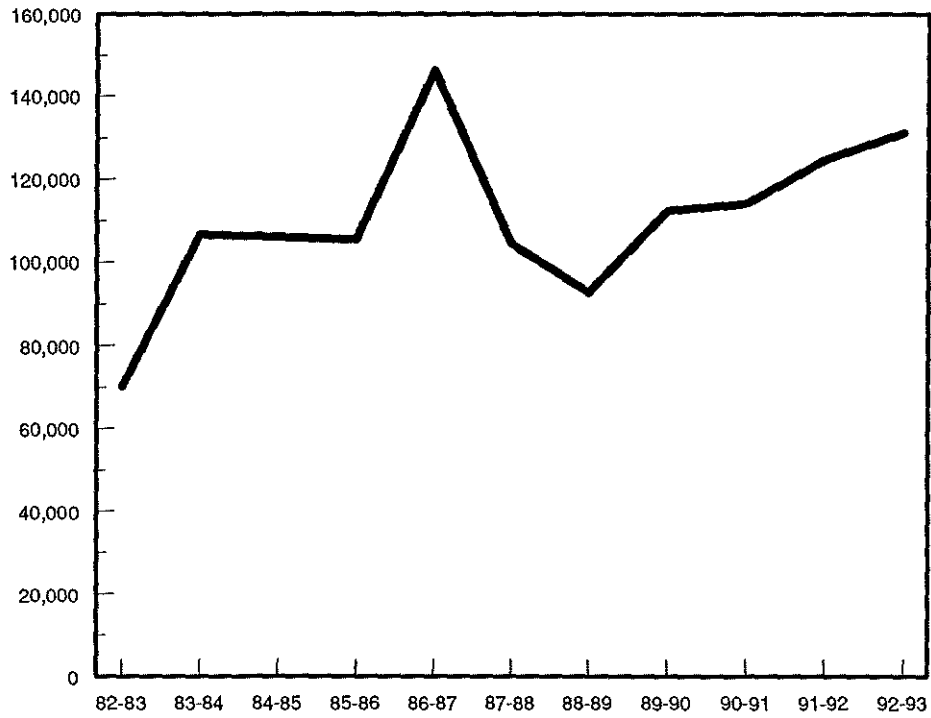
YEAR	MINNEAPOLIS - ST. PAUL	DULUTH - SUPERIOR	MIDLAND/ SOUTHWEST	MISC. MARKETS	TOTAL
1982-83	20,857 (30%)	12,544 (18%)	-	-	70,106 (100%)
1983-84	21,394 (20%)	38,578 (36%)	-	-	106,645 (100%)
1984-85	22,827 (22%)	26,665 (25%)	-	-	106,030 (100%)
1985-86	20,434 (19%)	8,175 (8%)	- ^a	- ^a	105,436 (100%)
1986-87	29,521 (20%)	10,136 (7%)	19,154 (13%)	87,531 (60%)	146,342 (100%)
1987-88	27,230 (26%)	16,112 (15%)	16,203 (16%)	44,854 (43%)	104,399 (100%)
1988-89	22,691 (24%)	9,735 (11%)	12,486 (13%)	47,803 (52%)	92,715 (100%)
1989-90	23,464 (21%)	22,893 (20%)	19,061 (17%)	46,838 (42%)	112,256 (100%)
1990-91	24,174 (21%)	14,200 (12%)	20,482 (18%)	55,190 (48%)	114,046 (100%)
1991-92	28,184 (23%)	19,398 (16%)	22,430 (17%)	54,740 (44%)	124,755 (100%)
1992-93	29,461 (23%)	20,799 (16%)	18,724 (14%)	62,153 ^b (47%)	131,139 (100%)

^aNot available prior to 1986-87.

^bMiscellaneous markets include shipments to Pacific Northwest destinations (8%), other Minnesota/Wisconsin destinations (16%), North Dakota destinations, and all other markets (10%).

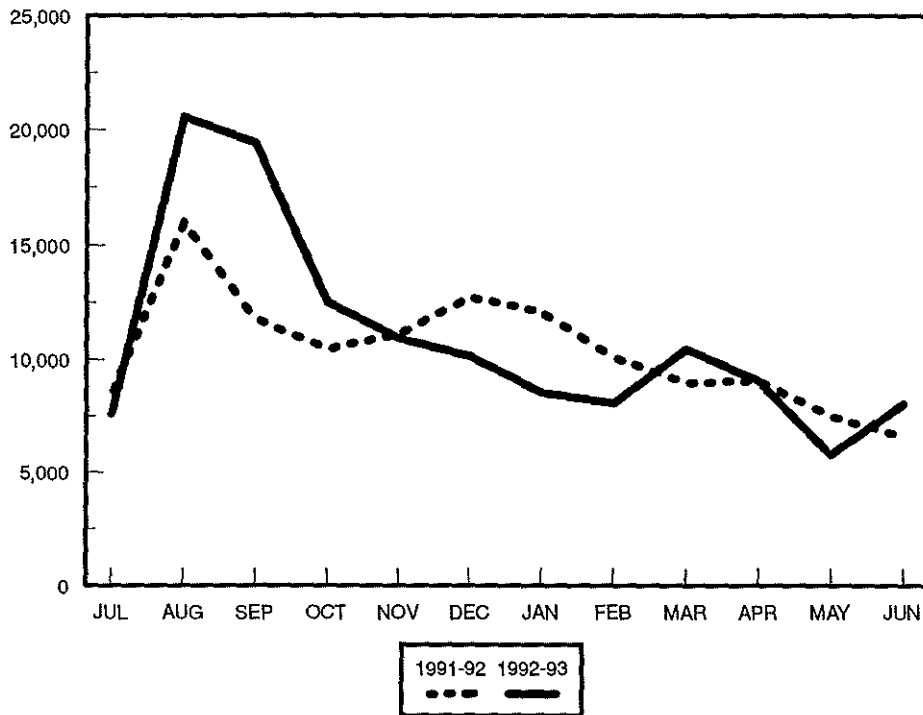
**BARLEY SHIPMENTS
1982-83 to 1992-93**

thousand bushels



**BARLEY SHIPMENTS
BY MONTH, 1991-92 TO 1992-93**

thousand bushels

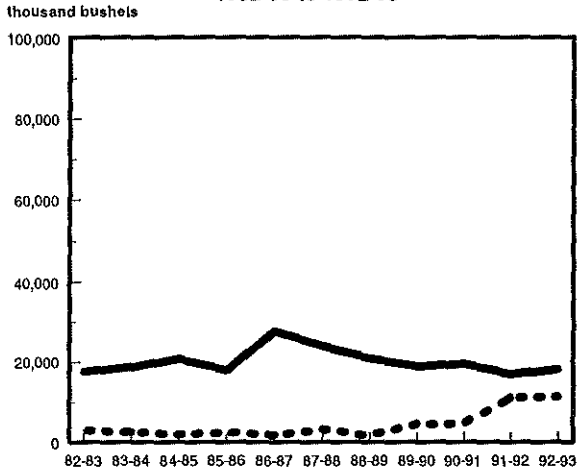


**NORTH DAKOTA BARLEY SHIPMENTS
BY RAIL, TRUCK AND DESTINATION
(thousand bu.)**

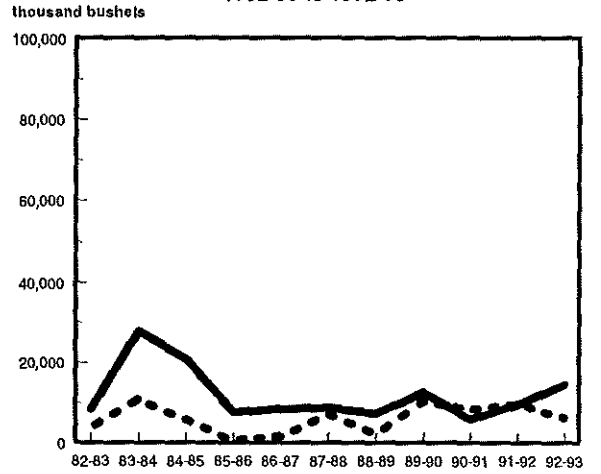
YEAR	MINNEAPOLIS - ST. PAUL		DULUTH - SUPERIOR		MIDLAND/ SOUTHWEST		MISC. MARKETS		TOTAL	
	Rail	Truck	Rail	Truck	Rail	Truck	Rail	Truck	Rail	Truck
1982-83	17,680 (85%)	3,176 (15%)	8,484 (68%)	4,060 (32%)	-	-	-	-	55,337 (79%)	14,768 (21%)
1983-84	18,763 (88%)	2,631 (12%)	27,896 (72%)	10,682 (28%)	-	-	-	-	87,225 (82%)	19,420 (18%)
1984-85	20,821 (91%)	2,006 (9%)	20,822 (78%)	5,843 (22%)	-	-	-	-	87,901 (83%)	18,128 (17%)
1985-86	17,888 (88%)	2,546 (12%)	7,610 (93%)	565 (7%)	-	-	-	^a	91,717 (87%)	13,719 (13%)
1986-87	27,731 (94%)	1,789 (6%)	8,429 (83%)	1,707 (17%)	17,858 (93%)	1,296 (7%)	82,176 (94%)	5,356 (6%)	136,194 (93%)	10,148 (7%)
1987-88	23,958 (88%)	3,272 (12%)	8,827 (55%)	7,285 (45%)	15,522 (96%)	681 (4%)	35,271 (79%)	9,583 (21%)	83,548 (80%)	20,851 (20%)
1988-89	20,908 (92%)	1,782 (8%)	7,395 (76%)	2,340 (24%)	11,566 (93%)	920 (7%)	36,599 (77%)	11,204 (23%)	76,467 (82%)	16,248 (18%)
1989-90	18,892 (81%)	4,572 (19%)	12,603 (55%)	10,290 (45%)	17,919 (94%)	1,142 (6%)	35,370 (76%)	11,468 (24%)	84,784 (76%)	27,472 (24%)
1990-91	19,533 (81%)	4,641 (19%)	5,969 (42%)	8,231 (58%)	19,678 (96%)	804 (4%)	45,005 (82%)	10,185 (18%)	90,185 (79%)	23,861 (21%)
1991-92	17,098 (61%)	11,085 (39%)	9,599 (49%)	9,798 (51%)	21,710 (97%)	719 (3%)	38,878 (71%)	15,860 (29%)	87,290 (70%)	37,465 (30%)
1992-93	18,070 (61%)	11,391 (39%)	14,468 (70%)	6,331 (30%)	10,472 (97%)	327 (3%)	50,921 (73%)	19,159 (27%)	93,931 (72%)	37,208 (28%)

^a Before 1986-87, Midland/Southwest shipments were included in Miscellaneous Markets.

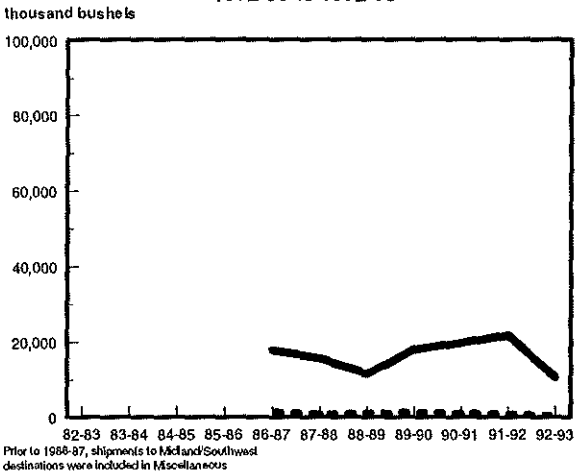
**BARLEY TO MINNEAPOLIS
1982-83 to 1992-93**



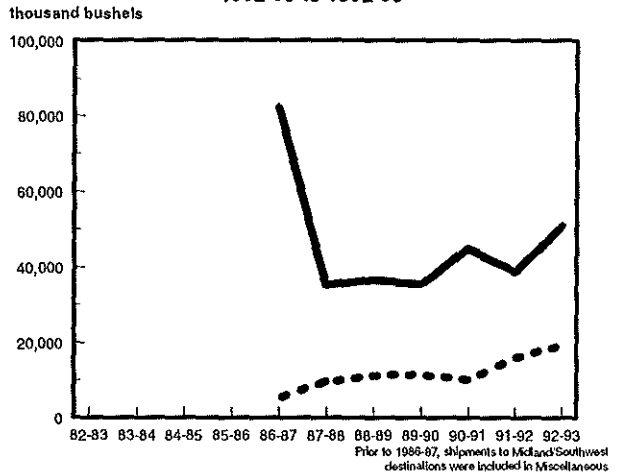
**BARLEY TO DULUTH-SUPERIOR
1982-83 to 1992-93**



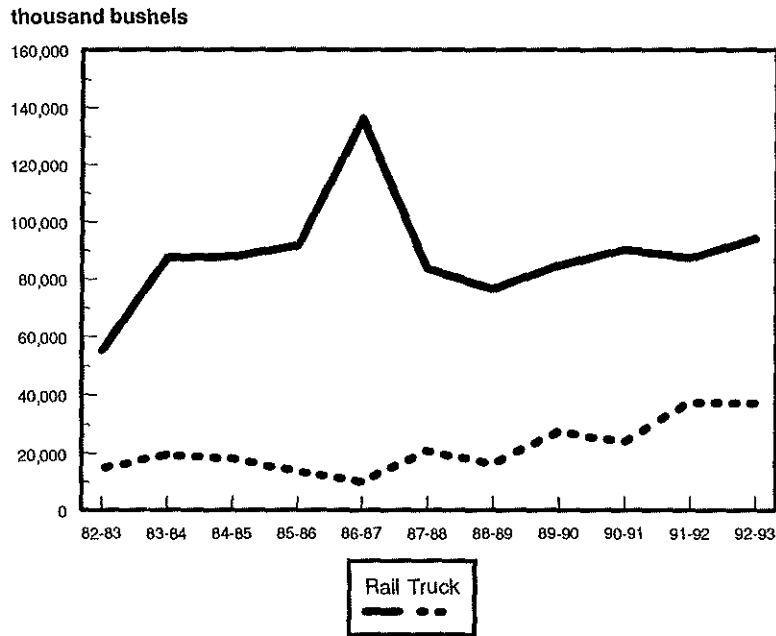
**BARLEY TO WEST
1982-83 to 1992-93**



**BARLEY TO MISCELLANEOUS MARKETS
1982-83 to 1992-93**



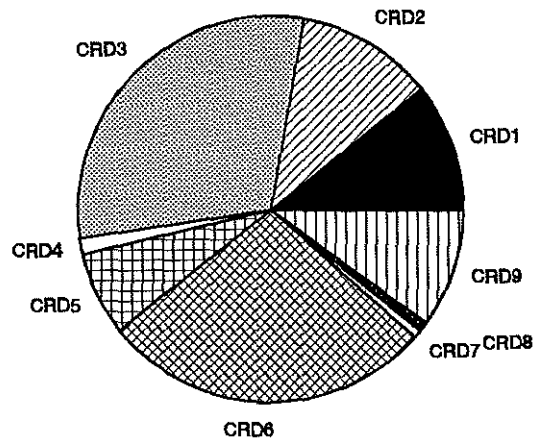
**BARLEY SHIPMENTS
1982-83 to 1992-93**



**NORTH DAKOTA BARLEY SHIPMENTS
BY CROP REPORTING DISTRICT ORIGIN
(thousand bu.)**

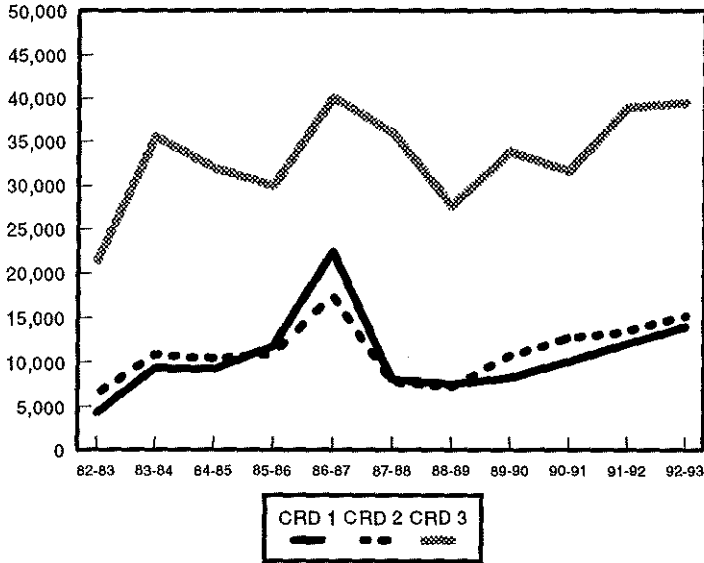
YEAR	Crop Reporting District									TOTAL
	1	2	3	4	5	6	7	8	9	
1982-83	4,304 (6%)	6,458 (9%)	21,380 (30%)	139 (0%)	5,028 (7%)	24,481 (35%)	57 (0%)	113 (0%)	8,146 (12%)	70,106 (100%)
1983-84	9,304 (9%)	10,838 (10%)	35,568 (33%)	612 (1%)	8,891 (8%)	30,281 (28%)	1,125 (1%)	672 (1%)	9,354 (9%)	106,645 (100%)
1984-85	9,245 (9%)	10,420 (10%)	32,002 (30%)	692 (1%)	8,587 (8%)	29,904 (28%)	1,386 (1%)	1,006 (1%)	12,789 (12%)	106,030 (100%)
1985-86	11,790 (11%)	10,918 (10%)	29,931 (28%)	1,328 (1%)	10,275 (10%)	28,258 (27%)	1,232 (1%)	611 (1%)	11,092 (11%)	105,436 (100%)
1986-87	22,443 (15%)	17,501 (12%)	40,032 (27%)	2,698 (2%)	15,079 (10%)	33,828 (23%)	3,883 (3%)	945 (1%)	9,931 (7%)	146,342 (100%)
1987-88	8,070 (8%)	7,713 (7%)	36,026 (35%)	658 (1%)	9,370 (9%)	32,593 (31%)	1,053 (1%)	497 (1%)	8,419 (8%)	104,399 (100%)
1988-89	7,472 (8%)	7,135 (8%)	27,618 (30%)	413 (0%)	10,072 (11%)	33,502 (36%)	535 (1%)	211 (0%)	5,752 (6%)	92,710 (100%)
1989-90	8,234 (7%)	10,645 (10%)	33,912 (30%)	419 (0%)	7,755 (7%)	40,160 (36%)	798 (1%)	123 (10%)	10,210 (9%)	112,256 (100%)
1990-91	10,057 (9%)	12,675 (11%)	31,650 (28%)	756 (1%)	7,936 (7%)	39,682 (35%)	117 (0%)	187 (0%)	10,986 (10%)	114,046 (100%)
1991-92	12,025 (10%)	13,402 (11%)	38,945 (31%)	1,088 (1%)	10,569 (8%)	37,116 (30%)	794 (1%)	531 (0%)	10,281 (8%)	124,755 (100%)
1992-93	13,966 (11%)	15,193 (12%)	39,522 (30%)	1,762 (1%)	9,106 (7%)	36,618 (28%)	883 (1%)	1,084 (1%)	13,000 (10%)	131,138 (100%)

**BARLEY SHIPMENTS
BY CROP REPORTING DISTRICT ORIGIN
1992 - 1993**

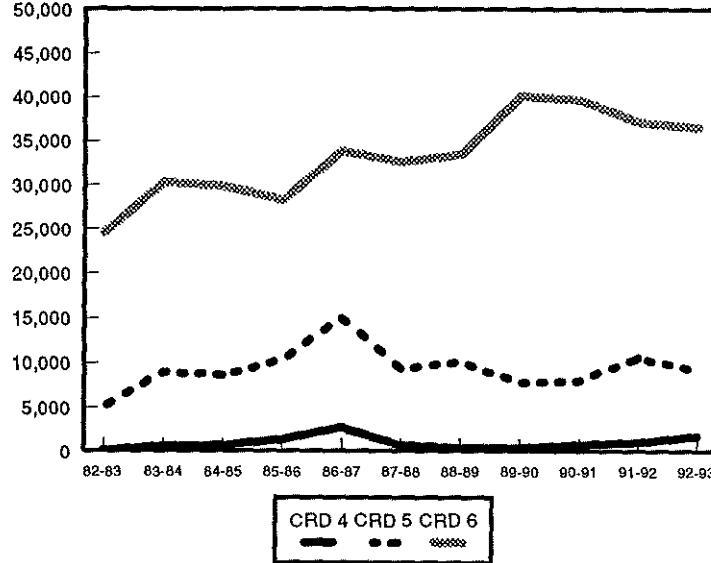


BARLEY SHIPMENTS BY CROP REPORTING DISTRICT

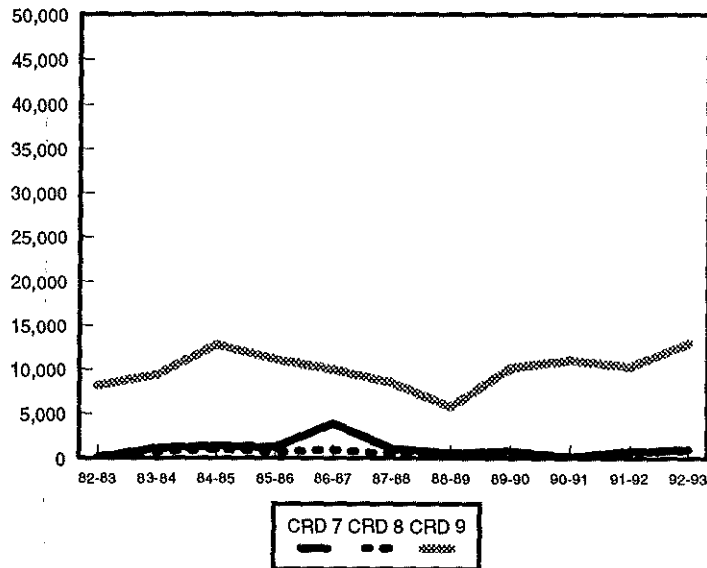
BY NORTHERN CROP REPORTING DISTRICTS
(thousand bushels)



BY CENTRAL CROP REPORTING DISTRICTS
(thousand bushels)



SOUTHERN CROP REPORTING DISTRICTS
(thousand bushels)



SUNFLOWER SHIPMENTS

**NORTH DAKOTA SUNFLOWER SHIPMENTS
BY DESTINATION
(thousand bu.)**

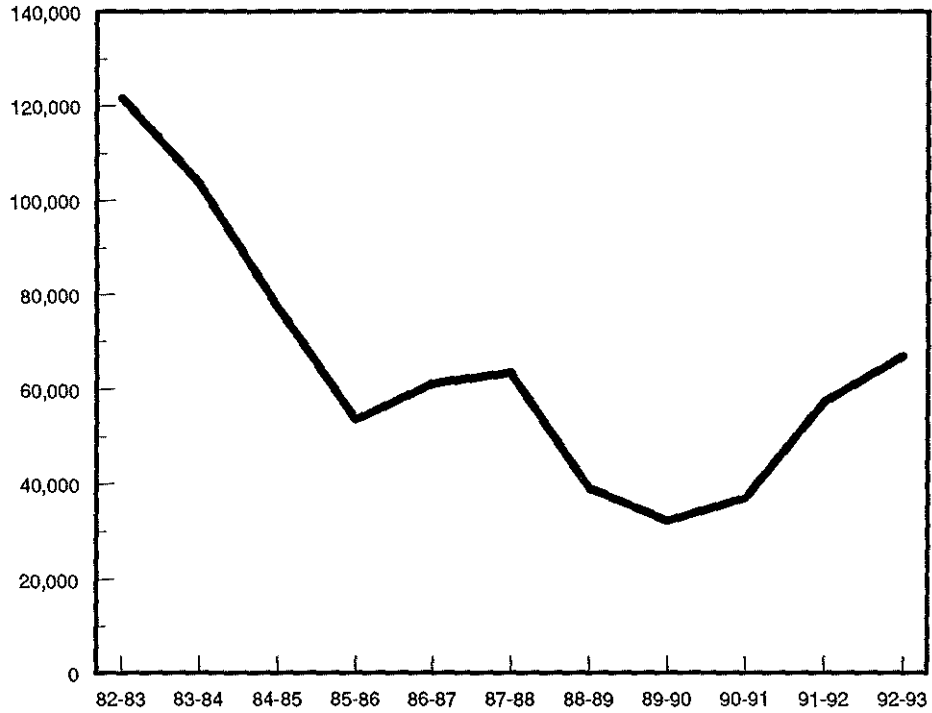
YEAR	MINNEAPOLIS - ST. PAUL	DULUTH - SUPERIOR	NORTH DAKOTA	MISC. MARKETS	TOTAL
1982-83	14,374 (12%)	64,849 (53%)	- -	42,522 (35%)	121,744 (100%)
1983-84	11,741 (11%)	40,560 (39%)	- - ^a	51,147 (49%)	103,449 (100%)
1984-85	5,636 (7%)	42,875 (55%)	12,931 (17%)	15,969 (21%)	77,412 (100%)
1985-86	3,623 (7%)	12,659 (24%)	27,393 (51%)	9,866 (18%)	53,541 (100%)
1986-87	3,142 (5%)	9,705 (16%)	38,131 (62%)	10,088 (17%)	61,067 (100%)
1987-88	4,085 (6%)	7,629 (12%)	32,153 (51%)	19,552 (31%)	63,419 (100%)
1988-89	2,496 (6%)	105 (0%)	20,834 (53%)	15,619 (40%)	39,056 (100%)
1989-90	2,219 (7%)	433 (1%)	20,964 (65%)	8,558 (27%)	32,174 (100%)
1990-91	4,264 (11%)	716 (2%)	20,866 (56%)	11,240 (30%)	37,086 (100%)
1991-92	4,050 (7%)	1,157 (2%)	33,428 (58%)	18,720 (33%)	57,364 (100%)
1992-93	4,367 (7%)	845 (1%)	47,059 (70%)	14,964 ^b (22%)	66,965 (100%)

^a Prior to the 1984-85 crop year, shipments to North Dakota processors were reported under "Miscellaneous" shipments.

^b Miscellaneous markets for sunflower in 1990-91 include Other Minnesota and Wisconsin destinations (6%), Midland/Southwest markets (2%), Pacific Northwest destinations (1%), and all other markets (13%).

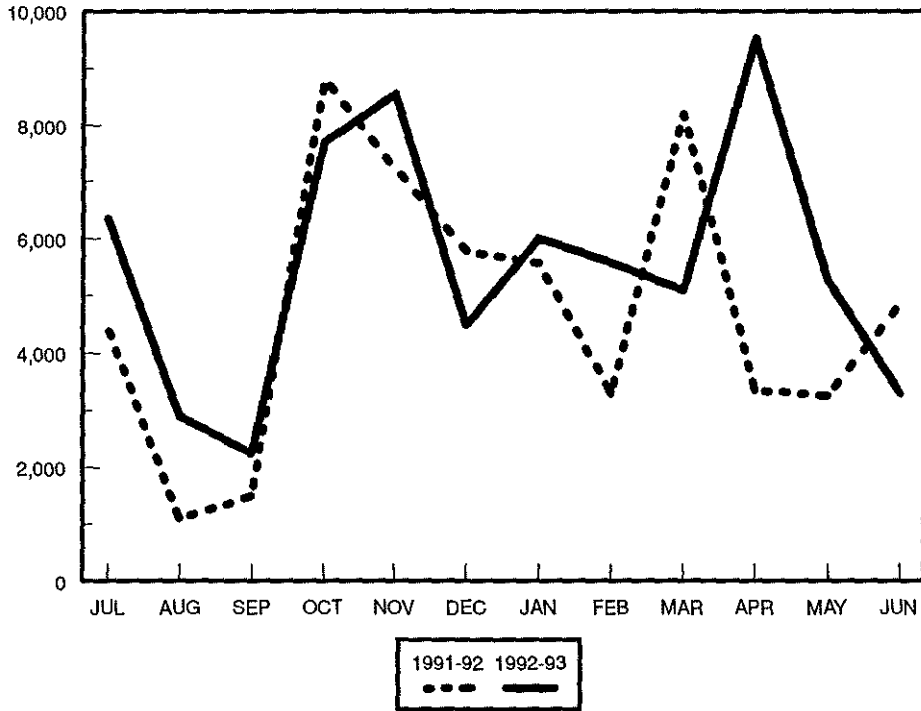
SUNFLOWER SHIPMENTS 1982-83 to 1992-93

thousand bushels



SUNFLOWER SHIPMENTS BY MONTH, 1991-92 TO 1992-93

thousand bushels

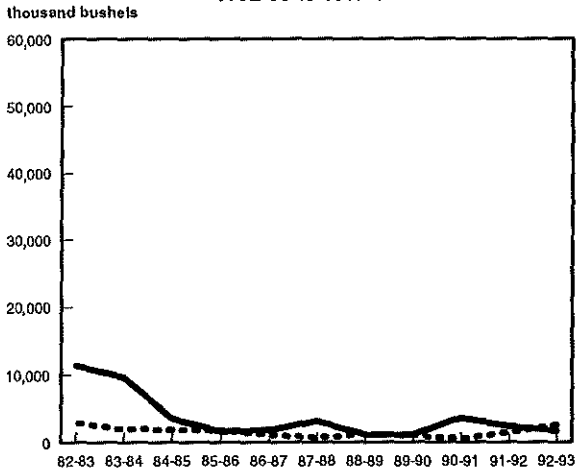


**NORTH DAKOTA SUNFLOWER SHIPMENTS
BY RAIL, TRUCK AND DESTINATION
(thousand bu.)**

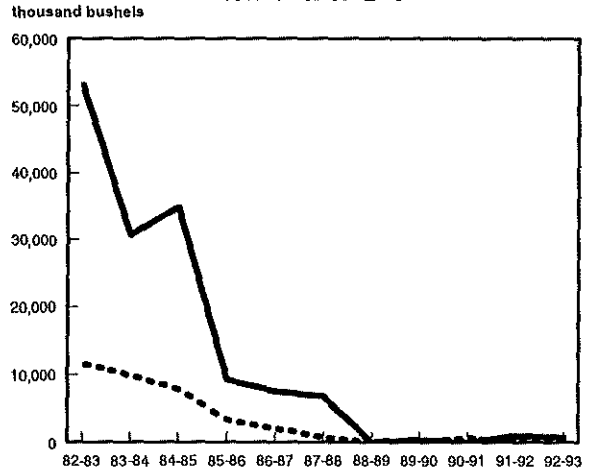
YEAR	MINNEAPOLIS - ST. PAUL		DULUTH - SUPERIOR		NORTH DAKOTA		MISC. MARKETS		TOTAL	
	Rail	Truck	Rail	Truck	Rail	Truck	Rail	Truck	Rail	Truck
1982-83	11,367 (79%)	3,007 (21%)	53,207 (82%)	11,641 (18%)	-	-	15,527 (37%)	26,995 (63%)	80,101 (66%)	41,643 (34%)
1983-84	9,650 (82%)	2,090 (18%)	30,672 (76%)	9,888 (24%)	-	^a	25,385 (50%)	25,762 (50%)	65,708 (64%)	37,742 (36%)
1984-85	3,617 (64%)	2,019 (36%)	34,912 (81%)	7,963 (19%)	1,442 (31%)	3,217 (69%)	8,646 (54%)	7,323 (46%)	48,618 (63%)	28,793 (37%)
1985-86	1,690 (47%)	1,932 (53%)	9,286 (73%)	3,373 (27%)	7,343 (27%)	20,050 (73%)	4,291 (43%)	5,575 (57%)	22,610 (42%)	30,931 (58%)
1986-87	1,925 (61%)	1,217 (39%)	7,521 (77%)	2,185 (23%)	4,850 (13%)	33,280 (87%)	4,805 (48%)	5,283 (52%)	19,101 (31%)	41,965 (65%)
1987-88	3,214 (79%)	871 (21%)	6,842 (90%)	787 (10%)	9,540 (30%)	22,613 (70%)	10,730 (55%)	8,821 (45%)	30,327 (48%)	33,092 (52%)
1988-89	1,227 (49%)	1,269 (51%)	70 (67%)	35 (33%)	4,306 (21%)	16,529 (79%)	6,942 (44%)	8,678 (56%)	12,545 (32%)	26,510 (68%)
1989-90	1,159 (52%)	1,060 (48%)	420 (97%)	13 (3%)	4,750 (23%)	16,214 (77%)	2,041 (24%)	6,517 (76%)	8,370 (26%)	23,804 (74%)
1990-91	3,653 (86%)	610 (14%)	0 (0%)	716 (100%)	4,875 (23%)	15,991 (77%)	4,843 (43%)	6,398 (57%)	13,371 (36%)	23,715 (64%)
1991-92	2,464 (61%)	1,582 (39%)	1,010 (87%)	146 (13%)	4,421 (13%)	29,007 (87%)	8,648 (46%)	10,065 (54%)	16,553 (29%)	40,810 (71%)
1992-93	1,746 (40%)	2,621 (60%)	803 (95%)	42 (5%)	3,918 (8%)	43,141 (92%)	3,215 (21%)	11,478 (89%)	9,682 (14%)	57,283 (86%)

^a Prior to the 1984-85 crop year, shipments to North Dakota processors and feedlots were reported under "Miscellaneous" shipments.

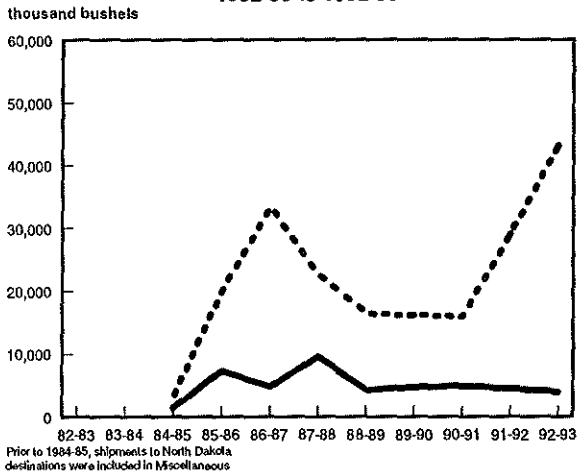
**SUNFLOWER TO MINNEAPOLIS
1982-83 to 1992-93**



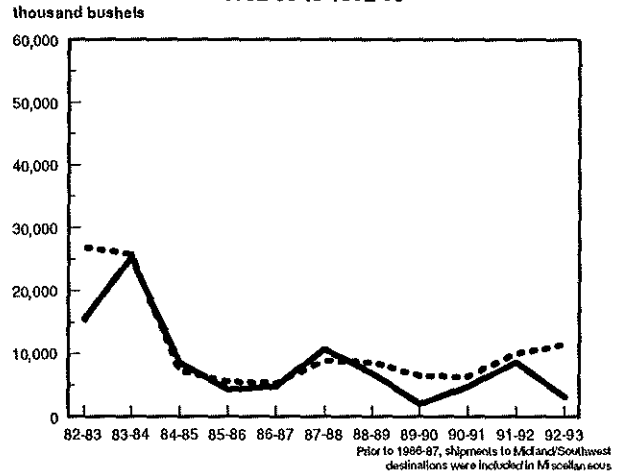
**SUNFLOWER TO DULUTH-SUPERIOR
1982-83 to 1992-93**



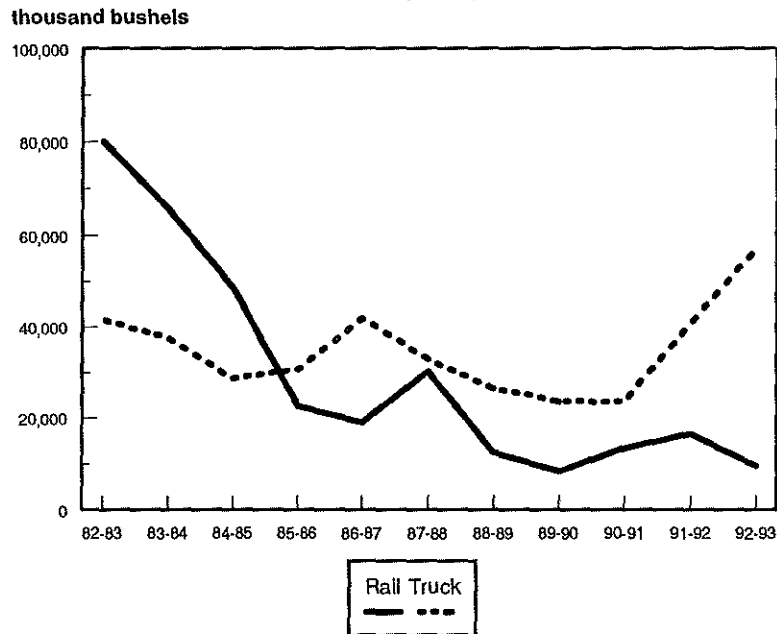
**SUNFLOWER TO NORTH DAKOTA
1982-83 to 1992-93**



**SUNFLOWER TO MISCELLANEOUS MARKETS
1982-83 to 1992-93**



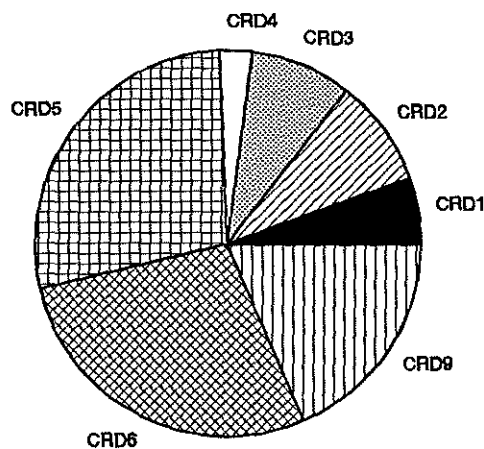
**SUNFLOWER SHIPMENTS
1982-83 to 1992-93**



**NORTH DAKOTA SUNFLOWER SHIPMENTS
BY CROP REPORTING DISTRICT ORIGIN
(thousand bu.)**

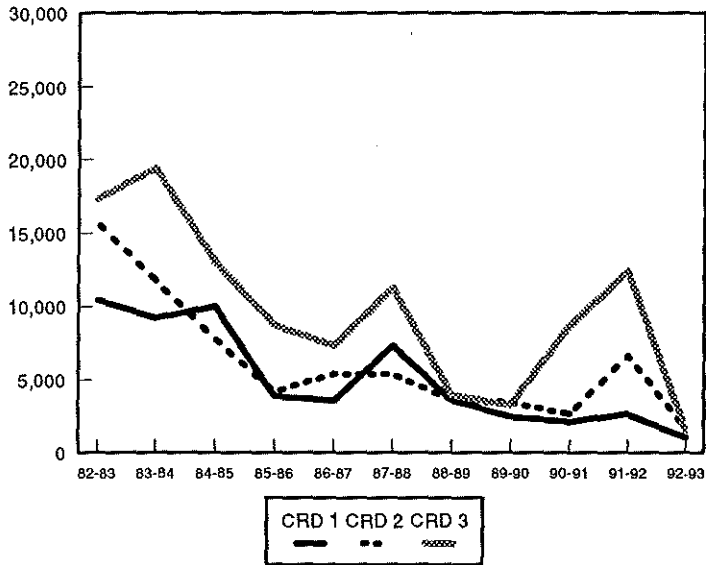
YEAR	Crop Reporting District									TOTAL
	1	2	3	4	5	6	7	8	9	
1982-83	10,434 (9%)	15,728 (13%)	17,391 (14%)	4,084 (3%)	25,906 (21%)	24,230 (20%)	1,510 (1%)	2,206 (2%)	20,253 (17%)	121,744 (100%)
1983-84	9,188 (9%)	11,780 (11%)	19,429 (19%)	4,037 (4%)	20,200 (20%)	20,522 (20%)	3,023 (3%)	2,604 (3%)	12,666 (12%)	103,449 (100%)
1984-85	10,002 (13%)	7,761 (10%)	13,053 (17%)	3,701 (5%)	13,962 (18%)	12,943 (17%)	3,573 (5%)	2,277 (3%)	10,140 (13%)	77,412 (100%)
1985-86	3,899 (7%)	4,208 (8%)	8,722 (16%)	2,894 (5%)	9,382 (18%)	10,994 (21%)	2,077 (4%)	2,153 (4%)	9,211 (17%)	53,541 (100%)
1986-87	3,582 (6%)	5,414 (9%)	7,336 (12%)	2,753 (5%)	10,284 (17%)	14,437 (24%)	830 (1%)	1,875 (3%)	14,556 (24%)	61,067 (100%)
1987-88	7,305 (12%)	5,414 (9%)	11,280 (18%)	3,031 (5%)	11,429 (18%)	9,926 (16%)	1,543 (2%)	2,371 (4%)	11,120 (18%)	63,419 (100%)
1988-89	3,608 (9%)	3,631 (9%)	3,983 (10%)	1,554 (4%)	7,228 (19%)	11,054 (28%)	1,076 (3%)	1,019 (3%)	5,899 (15%)	39,052 (100%)
1989-90	2,487 (8%)	3,466 (11%)	3,258 (10%)	810 (3%)	6,560 (20%)	7,460 (23%)	308 (1%)	613 (2%)	7,212 (22%)	32,174 (100%)
1990-91	2,146 (6%)	2,648 (7%)	8,634 (23%)	1,357 (4%)	6,893 (19%)	7,900 (21%)	118 (0%)	291 (1%)	7,099 (19%)	37,086 (100%)
1991-92	2,635 (5%)	6,689 (12%)	12,414 (22%)	385 (1%)	13,507 (23%)	11,307 (19%)	78 (0%)	185 (0%)	10,142 (18%)	57,364 (100%)
1992-93	1,033 (6%)	1,681 (9%)	1,571 (8%)	520 (2%)	5,216 (28%)	5,191 (28%)	29 (0%)	53 (0%)	3,451 (18%)	18,750 (100%)

**SUNFLOWER SHIPMENTS
BY CROP REPORTING DISTRICT ORIGIN
1992 - 1993**

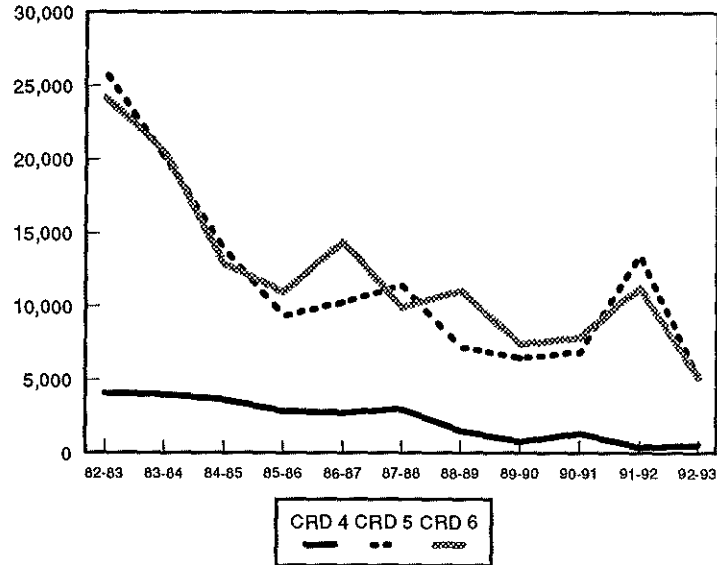


SUNFLOWER SHIPMENTS BY CROP REPORTING DISTRICT

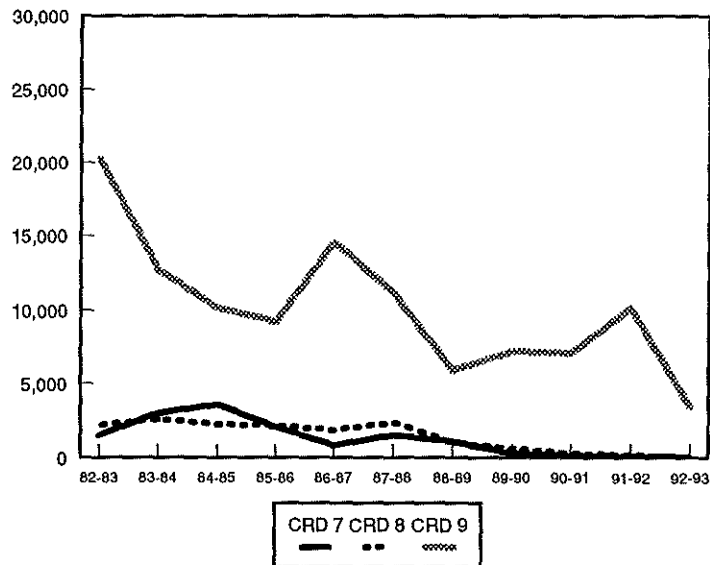
BY NORTHERN CROP REPORTING DISTRICTS
(thousand bushels)



BY CENTRAL CROP REPORTING DISTRICTS
(thousand bushels)



SOUTHERN CROP REPORTING DISTRICTS
(thousand bushels)





***OATS
SHIPMENTS***

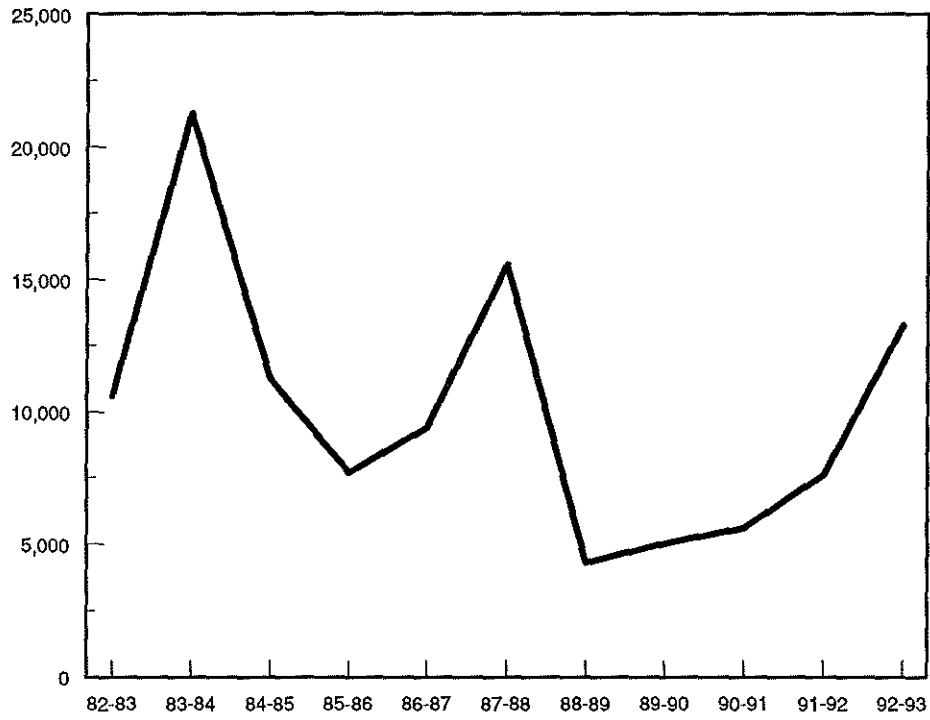
**NORTH DAKOTA OATS SHIPMENTS
BY DESTINATION
(thousand bu.)**

YEAR	MINNEAPOLIS - ST. PAUL	DULUTH - SUPERIOR	WEST	MISC. MARKETS	TOTAL
1982-83	7,045 (67%)	410 (4%)	675 (6%)	2,453 (23%)	10,583 (100%)
1983-84	14,984 (70%)	588 (3%)	400 (2%)	5,289 (25%)	21,261 (100%)
1984-85	6,467 (58%)	166 (1%)	437 (4%)	4,163 (37%)	11,233 (100%)
1985-86	4,029 (52%)	115 (1%)	431 (6%)	3,131 (41%)	7,706 (100%)
1986-87	4,690 (50%)	74 (1%)	193 (2%)	4,430 (47%)	9,387 (100%)
1987-88	8,272 (53%)	25 (0%)	96 (1%)	7,183 (46%)	15,576 (100%)
1988-89	2,999 (70%)	83 (2%)	17 (0%)	1,197 (28%)	4,296 (100%)
1989-90	3,179 (63%)	36 (1%)	12 (0%)	1,788 (36%)	5,015 (100%)
1990-91	2,496 (45%)	45 (1%)	316 (6%)	2,744 (49%)	5,601 (100%)
1991-92	4,518 (59%)	146 (2%)	181 (2%)	2,754 (37%)	7,601 (100%)
1992-93	5,468 (41%)	284 (0%)	270 (2%)	7,505 ^a (57%)	13,272 (100%)

^aMiscellaneous markets include shipments to North Dakota destinations (3%), Midland/Southwest destinations (32%), other Minnesota/Wisconsin destinations (7%), and all other markets (14%).

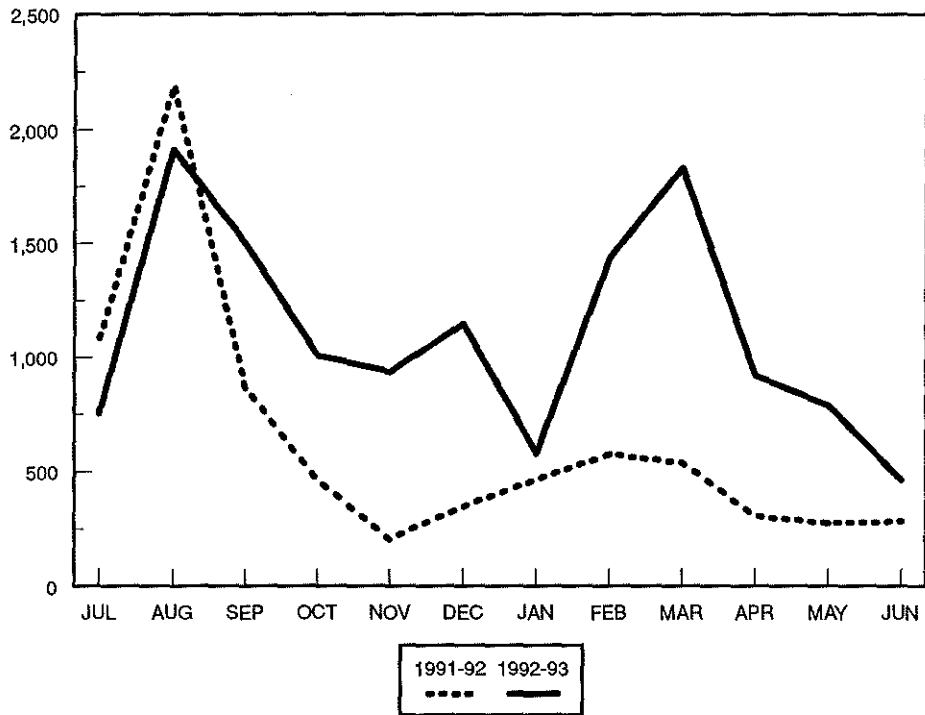
OATS SHIPMENTS 1982-83 to 1992-93

thousand bushels



OATS SHIPMENTS BY MONTH, 1991-92 TO 1992-93

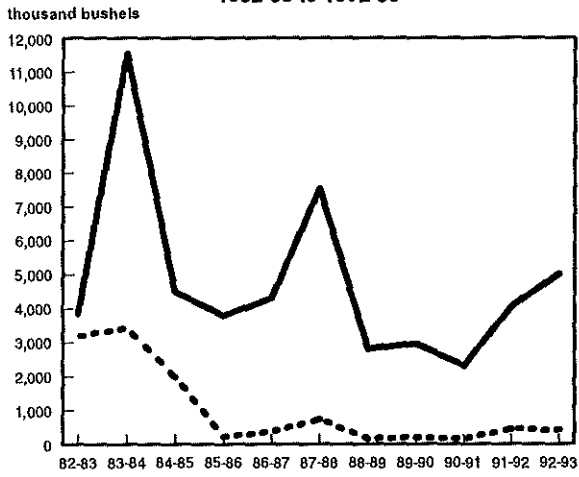
thousand bushels



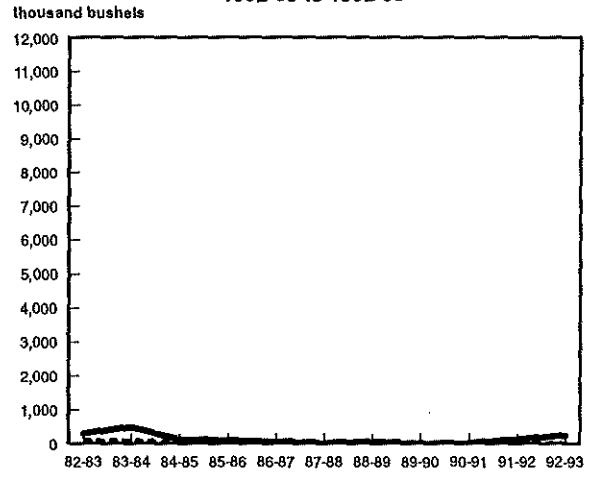
**NORTH DAKOTA OATS SHIPMENTS
BY RAIL, TRUCK AND DESTINATION
(thousand bu.)**

YEAR	MINNEAPOLIS - ST. PAUL		DULUTH - SUPERIOR		WEST		MISC. MARKETS		TOTAL	
	Rail	Truck	Rail	Truck	Rail	Truck	Rail	Truck	Rail	Truck
1982-83	3,848 (55%)	3,197 (45%)	319 (78%)	91 (22%)	19 (3%)	656 (97%)	877 (38%)	1,576 (64%)	5,063 (48%)	5,520 (52%)
1983-84	11,547 (77%)	3,436 (23%)	503 (85%)	86 (15%)	99 (25%)	301 (75%)	2,645 (50%)	2,643 (50%)	14,794 (70%)	6,466 (30%)
1984-85	4,481 (69%)	1,986 (31%)	137 (83%)	29 (17%)	30 (7%)	407 (93%)	1,406 (34%)	2,757 (66%)	6,054 (51%)	5,179 (49%)
1985-86	3,796 (94%)	233 (6%)	109 (95%)	6 (5%)	190 (44%)	241 (56%)	1,237 (40%)	1,894 (60%)	5,333 (69%)	2,373 (31%)
1986-87	4,287 (91%)	403 (9%)	73 (98%)	1 (2%)	55 (28%)	139 (72%)	2,659 (60%)	1,771 (40%)	7,074 (75%)	2,314 (25%)
1987-88	7,525 (91%)	747 (9%)	24 (96%)	1 (4%)	61 (64%)	35 (36%)	6,005 (84%)	1,178 (16%)	13,615 (87%)	1,961 (13%)
1988-89	2,810 (94%)	189 (6%)	82 (98%)	1 (2%)	8 (51%)	8 (49%)	736 (61%)	461 (39%)	3,637 (85%)	660 (15%)
1989-90	2,959 (93%)	220 (7%)	5 (13%)	31 (87%)	9 (73%)	3 (27%)	511 (29%)	1,277 (71%)	3,484 (69%)	1,531 (31%)
1990-91	2,306 (92%)	191 (8%)	36 (80%)	9 (20%)	240 (76%)	75 (24%)	924 (34%)	1,820 (66%)	3,506 (63%)	2,095 (37%)
1991-92	4,055 (90%)	461 (10%)	140 (96%)	5 (4%)	149 (82%)	31 (8%)	1,411 (51%)	1,341 (49%)	5,758 (76%)	1,842 (24%)
1992-93	5,018 (92%)	450 (8%)	251 (88%)	3 (12%)	74 (27%)	196 (73%)	5,415 (72%)	2,090 (28%)	10,533 (79%)	2,739 (21%)

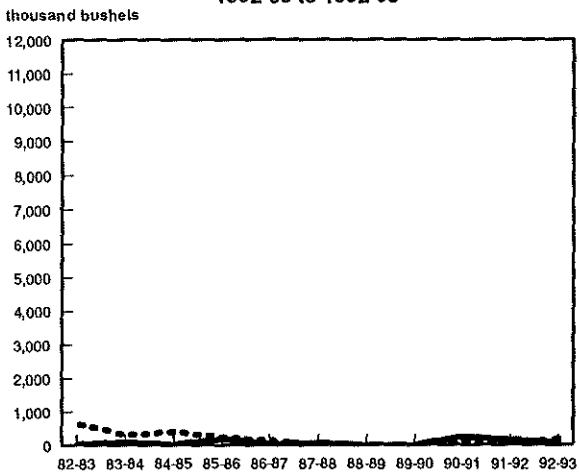
**OATS TO MINNEAPOLIS
1982-83 to 1992-93**



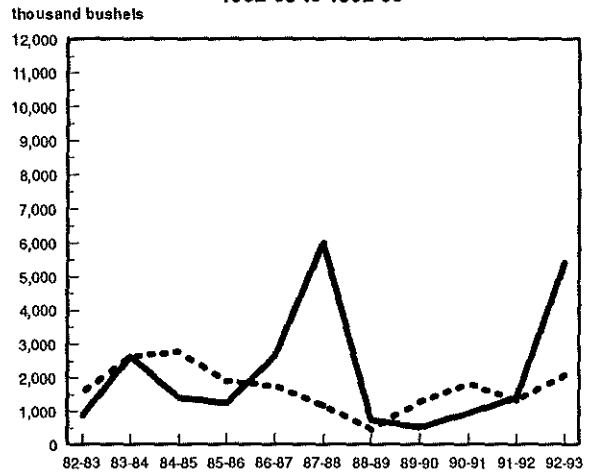
**OATS TO DULUTH-SUPERIOR
1982-83 to 1992-93**



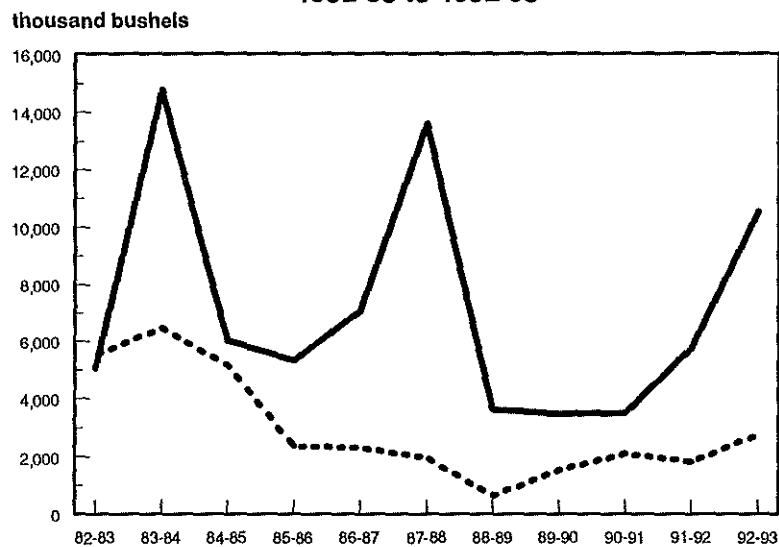
**OATS TO WEST
1982-83 to 1992-93**



**OATS TO MISCELLANEOUS MARKETS
1982-83 to 1992-93**



**OATS SHIPMENTS
1982-83 to 1992-93**

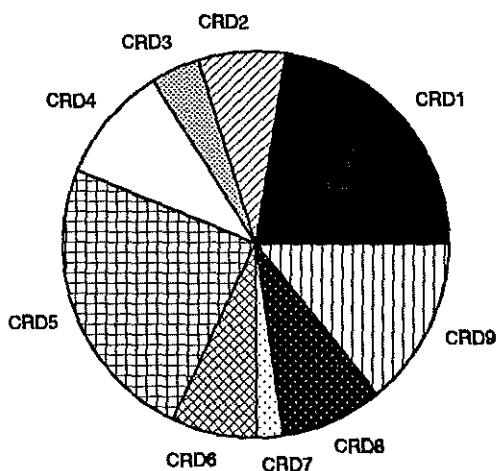


Rail Truck


**NORTH DAKOTA OATS SHIPMENTS
BY CROP REPORTING DISTRICT ORIGIN
(thousand bu.)**

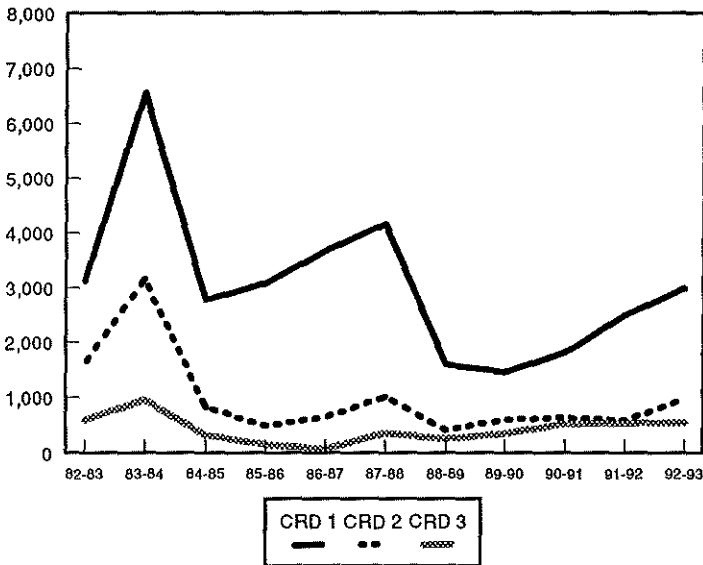
YEAR	Crop Reporting District									TOTAL
	1	2	3	4	5	6	7	8	9	
1982-83	3,130 (30%)	1,614 (15%)	598 (6%)	573 (5%)	946 (9%)	1,176 (11%)	164 (2%)	578 (5%)	1,804 (17%)	10,583 (100%)
1983-84	6,562 (31%)	3,163 (15%)	952 (4%)	1,530 (7%)	2,561 (12%)	934 (4%)	1,834 (9%)	1,368 (6%)	2,356 (11%)	21,261 (100%)
1984-85	2,780 (24%)	828 (7%)	328 (3%)	1,085 (10%)	956 (9%)	824 (7%)	823 (7%)	1,101 (10%)	2,509 (21%)	11,234 (100%)
1985-86	3,078 (40%)	490 (6%)	150 (2%)	1,306 (17%)	404 (5%)	599 (8%)	301 (4%)	312 (4%)	1,065 (14%)	7,705 (100%)
1986-87	3,681 (39%)	656 (7%)	72 (1%)	1,858 (20%)	642 (7%)	354 (4%)	452 (5%)	463 (5%)	1,211 (13%)	9,387 (100%)
1987-88	4,162 (27%)	1,017 (7%)	352 (2%)	2,001 (13%)	2,101 (13%)	729 (5%)	1,443 (9%)	1,365 (9%)	2,398 (15%)	15,568 (100%)
1988-89	1,600 (37%)	424 (10%)	255 (6%)	402 (9%)	587 (14%)	158 (4%)	192 (4%)	363 (8%)	313 (7%)	4,294 (100%)
1989-90	1,453 (29%)	600 (12%)	342 (7%)	330 (7%)	409 (8%)	794 (16%)	75 (1%)	240 (5%)	772 (15%)	5,015 (100%)
1990-91	1,809 (32%)	636 (11%)	515 (9%)	605 (11%)	386 (7%)	911 (16%)	52 (1%)	70 (1%)	617 (11%)	5,601 (100%)
1991-92	2,492 (33%)	596 (8%)	532 (7%)	848 (11%)	499 (7%)	763 (10%)	73 (1%)	322 (4%)	1,472 (19%)	7,601 (100%)
1992-93	2,997 (23%)	971 (7%)	539 (4%)	1,308 (10%)	3,209 (24%)	948 (7%)	289 (2%)	1,127 (9%)	1,879 (14%)	13,271 (100%)

**OATS SHIPMENTS
BY CROP REPORTING DISTRICT ORIGIN
1992 - 1993**

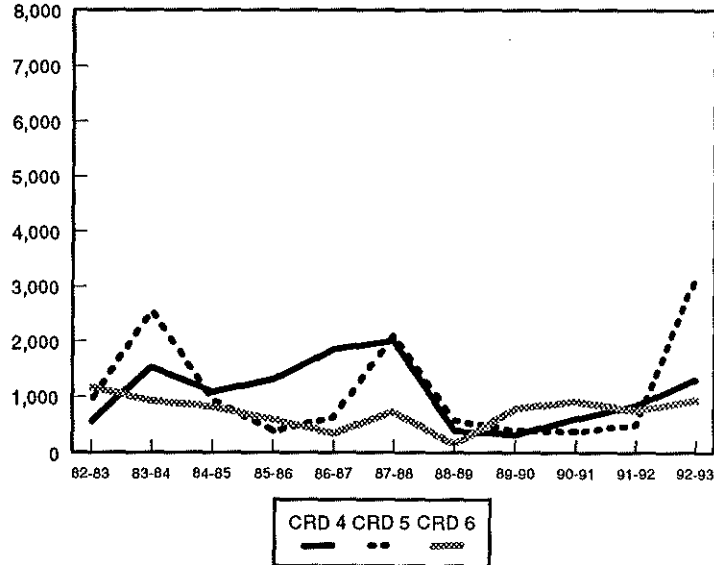


OATS SHIPMENTS BY CROP REPORTING DISTRICT

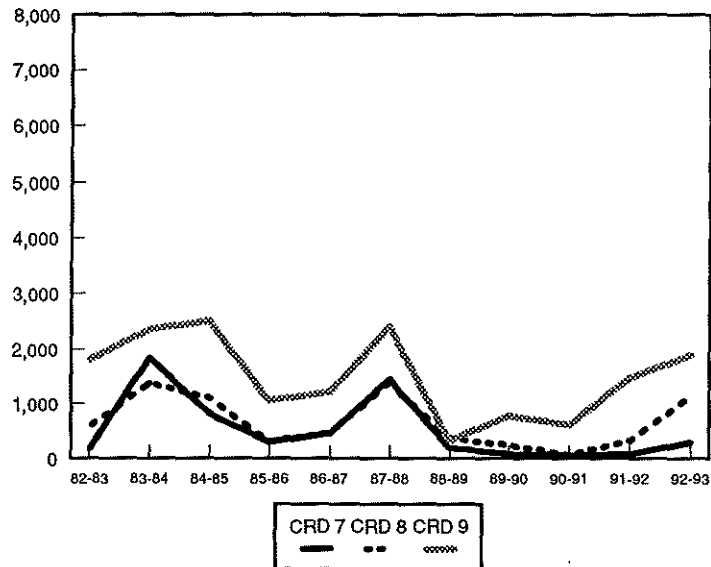
BY NORTHERN CROP REPORTING DISTRICTS
(thousand bushels)



BY CENTRAL CROP REPORTING DISTRICTS
(thousand bushels)



SOUTHERN CROP REPORTING DISTRICTS
(thousand bushels)





SOYBEAN SHIPMENTS

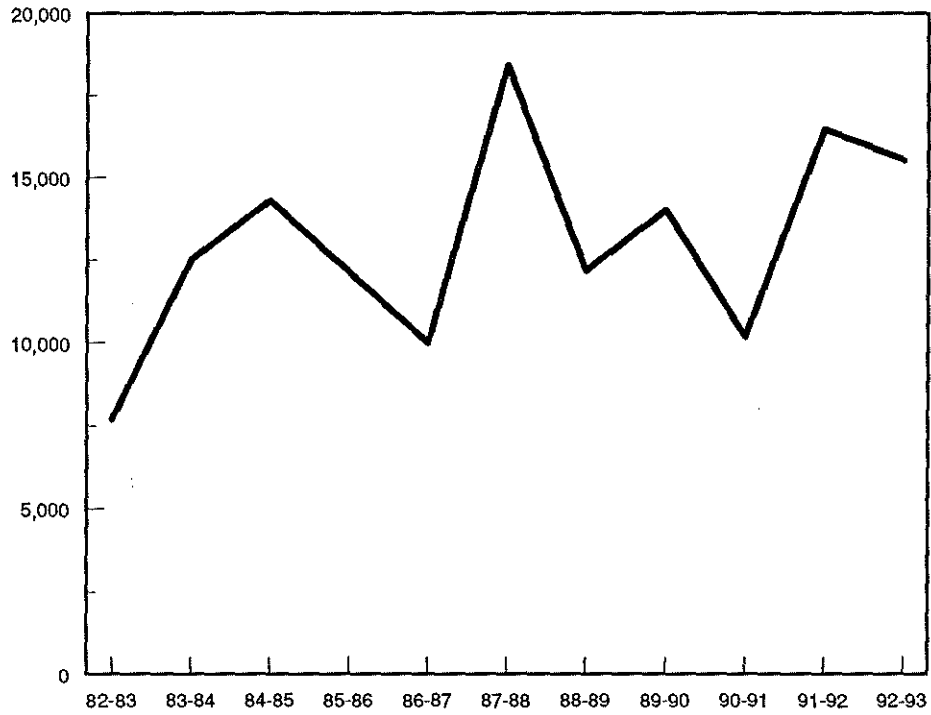
**NORTH DAKOTA SOYBEAN SHIPMENTS
BY DESTINATION
(thousand bu.)**

YEAR	MINNEAPOLIS - ST. PAUL	DULUTH - SUPERIOR	WEST	MISC. MARKETS	TOTAL
1982-83	5,639 (73%)	185 (2%)	952 (12%)	910 (12%)	7,687 (100%)
1983-84	7,625 (61%)	1,430 (11%)	2,418 (19%)	1,030 (8%)	12,504 (100%)
1984-85	4,361 (31%)	491 (3%)	6,825 (48%)	2,615 (18%)	14,292 (100%)
1985-86	5,739 (47%)	184 (2%)	3,631 (30%)	2,563 (21%)	12,116 (100%)
1986-87	4,933 (49%)	166 (2%)	2,144 (21%)	2,747 (27%)	9,990 (100%)
1987-88	4,666 (25%)	2,800 (15%)	7,797 (42%)	3,150 (17%)	18,413 (100%)
1988-89	2,315 (19%)	2,347 (19%)	5,375 (44%)	2,121 (17%)	12,160 (100%)
1989-90	1,819 (13%)	1,379 (10%)	6,712 (48%)	4,105 (29%)	14,015 (100%)
1990-91	1,802 (18%)	1,268 (12%)	4,001 (39%)	3,114 (31%)	10,185 (100%)
1991-92	3,025 (18%)	510 (3%)	7,552 (46%)	5,374 (33%)	16,464 (100%)
1992-93	3,594 (23%)	354 (2%)	8,396 (54%)	3,184 ^a (21%)	15,528 (100%)

^aMiscellaneous markets include shipments to other Minnesota/Wisconsin destinations (3%), Midland/Southwest destinations (4%), and all other markets including North Dakota processors (13%).

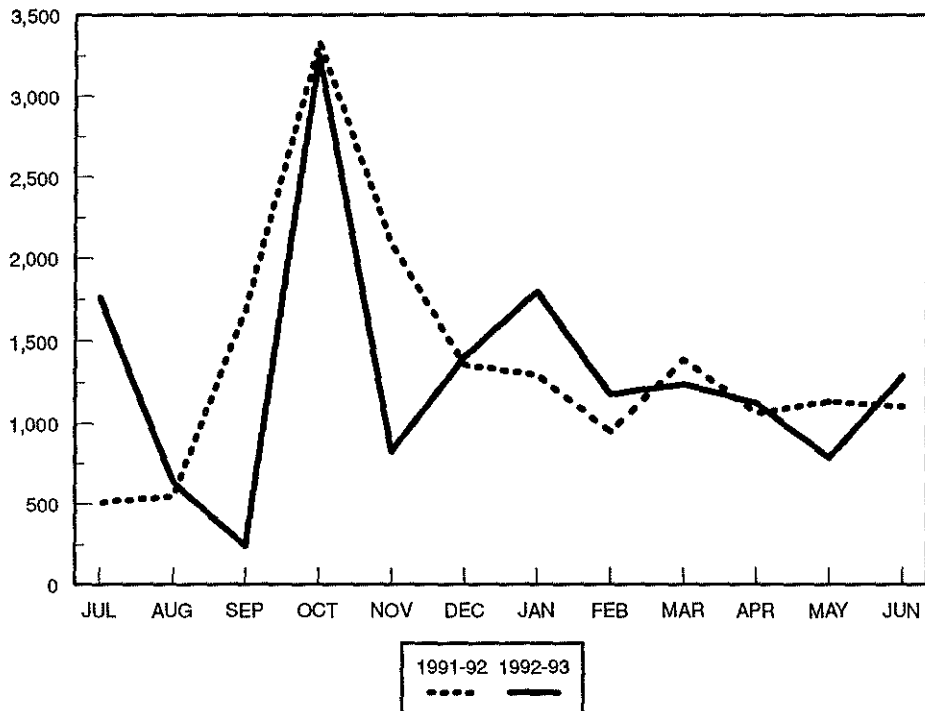
SOYBEAN SHIPMENTS 1982-83 to 1992-93

thousand bushels



SOYBEAN SHIPMENTS BY MONTH, 1991-92 TO 1992-93

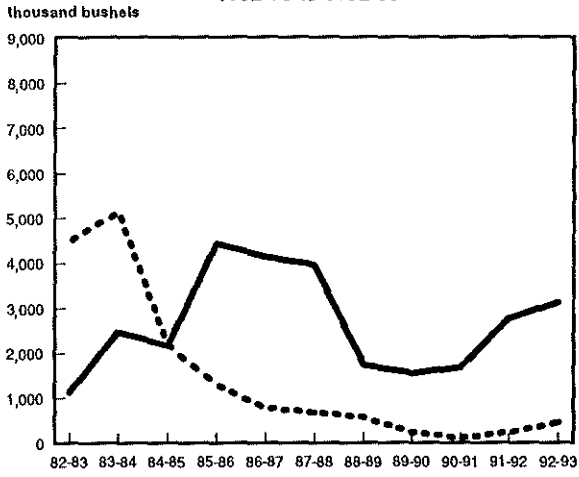
thousand bushels



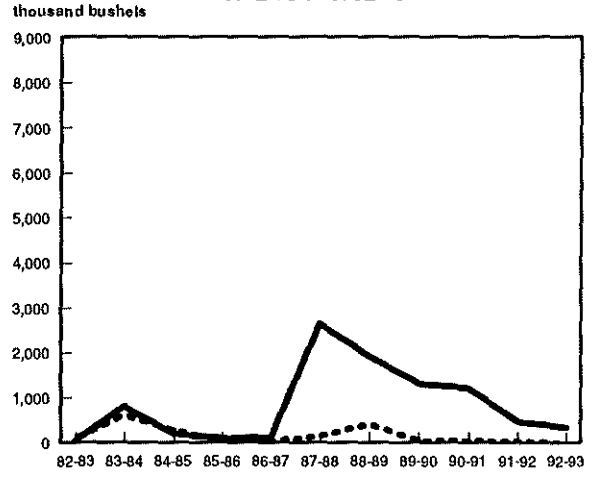
**NORTH DAKOTA SOYBEAN SHIPMENTS
BY RAIL, TRUCK AND DESTINATION
(thousand bu.)**

YEAR	MINNEAPOLIS - ST. PAUL		DULUTH - SUPERIOR		WEST		MISC. MARKETS		TOTAL	
	Rail	Truck	Rail	Truck	Rail	Truck	Rail	Truck	Rail	Truck
1982-83	1,137 (20%)	4,502 (80%)	69 (37%)	117 (63%)	872 (92%)	80 (8%)	79 (9%)	831 (91%)	2,158 (28%)	5,529 (72%)
1983-84	2,482 (33%)	5,143 (67%)	804 (56%)	626 (44%)	2,370 (98%)	48 (2%)	368 (36%)	663 (64%)	6,023 (48%)	6,480 (52%)
1984-85	2,162 (50%)	2,199 (50%)	212 (43%)	279 (57%)	6,788 (99%)	37 (1%)	255 (10%)	2,361 (90%)	9,417 (66%)	4,876 (34%)
1985-86	4,434 (77%)	1,305 (23%)	112 (61%)	72 (39%)	3,532 (97%)	100 (3%)	175 (7%)	2,388 (93%)	8,252 (68%)	3,864 (32%)
1986-87	4,137 (84%)	797 (16%)	123 (74%)	42 (26%)	2,132 (99%)	12 (1%)	1,532 (56%)	1,215 (44%)	7,924 (79%)	2,066 (21%)
1987-88	3,979 (85%)	687 (15%)	2,645 (94%)	155 (6%)	7,778 (100%)	19 (0%)	1,692 (54%)	1,458 (46%)	16,094 (87%)	2,319 (13%)
1988-89	1,732 (75%)	583 (25%)	1,931 (82%)	416 (18%)	5,162 (96%)	213 (4%)	468 (22%)	1,652 (78%)	9,294 (76%)	2,865 (24%)
1989-90	1,565 (86%)	254 (14%)	1,320 (96%)	60 (4%)	6,705 (100%)	7 (0%)	618 (15%)	3,486 (85%)	10,208 (73%)	3,807 (27%)
1990-91	1,683 (93%)	120 (7%)	1,215 (96%)	54 (4%)	3,816 (95%)	185 (5%)	772 (25%)	2,340 (75%)	7,486 (74%)	2,699 (26%)
1991-92	2,782 (92%)	242 (8%)	479 (94%)	31 (6%)	7,184 (95%)	367 (5%)	2,987 (56%)	2,386 (44%)	13,434 (82%)	3,029 (18%)
1992-93	3,131 (87%)	463 (13%)	349 (99%)	5 (1%)	8,387 (100%)	8 (0%)	2,126 (67%)	1,058 (33%)	13,992 (90%)	1,536 (10%)

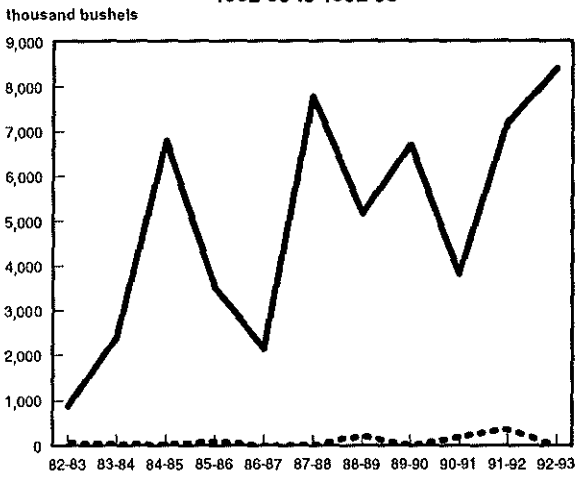
SOYBEANS TO MINNEAPOLIS
1982-83 to 1992-93



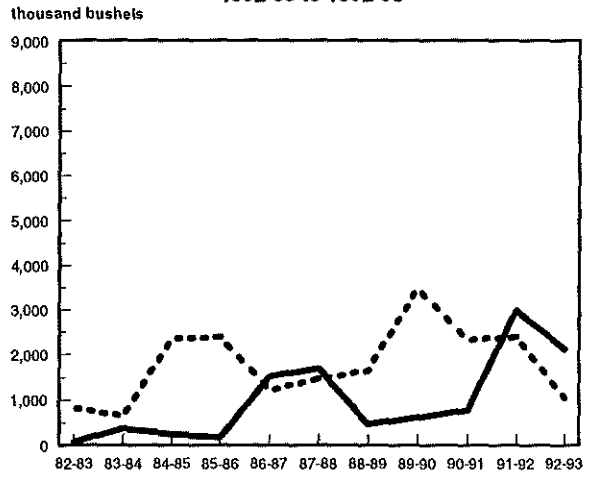
SOYBEANS TO DULUTH-SUPERIOR
1982-83 to 1992-93



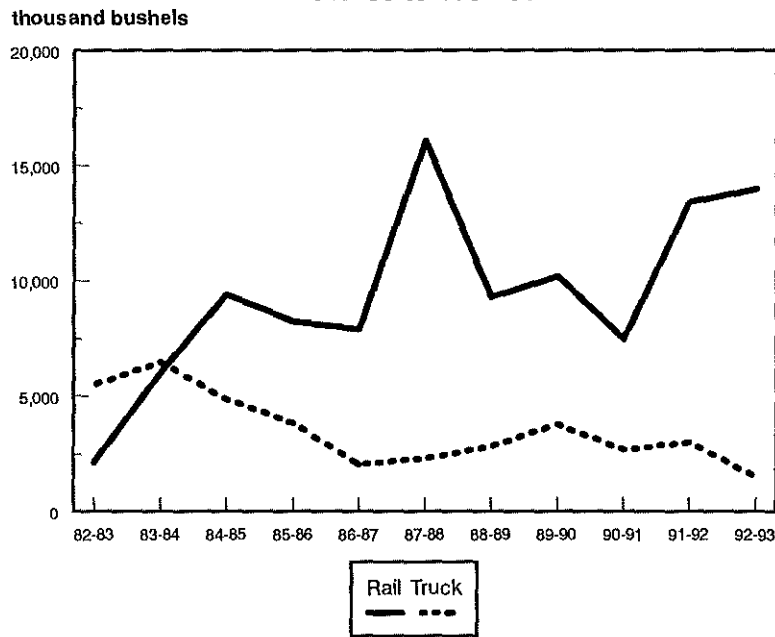
SOYBEANS TO WEST
1982-83 to 1992-93



SOYBEANS TO MISCELLANEOUS MARKETS
1982-83 to 1992-93



SOYBEAN SHIPMENTS
1982-83 to 1992-93

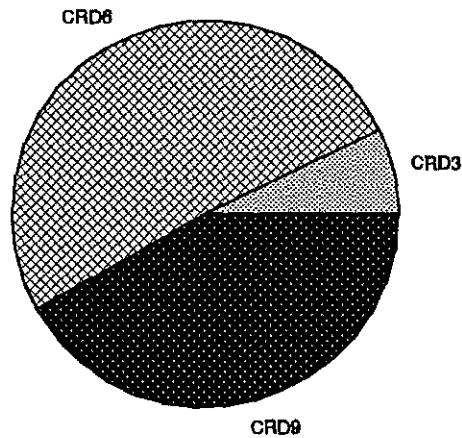


Rail —
Truck - - -

**NORTH DAKOTA SOYBEAN SHIPMENTS
BY CROP REPORTING DISTRICT ORIGIN
(thousand bu.)**

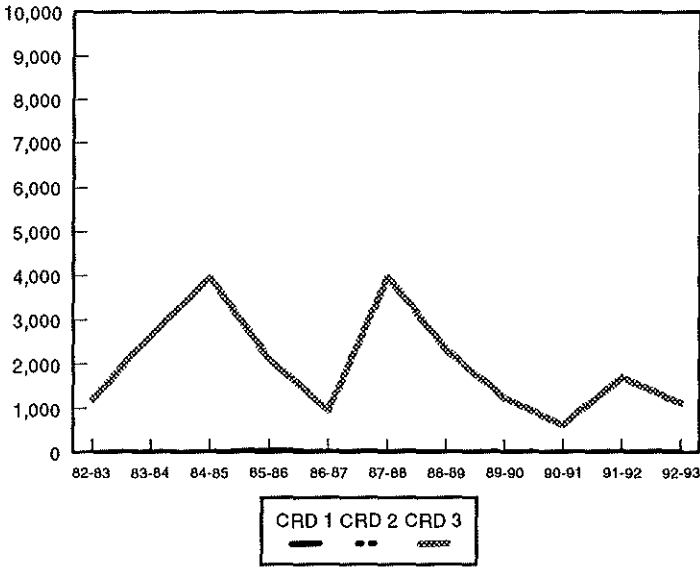
YEAR	Crop Reporting District									TOTAL
	1	2	3	4	5	6	7	8	9	
1982-83	0 (0%)	3 (0%)	1,206 (16%)	0 (0%)	36 (1%)	4,164 (54%)	2 (0%)	0 (0%)	2,277 (30%)	7,687 (100%)
1983-84	2 (0%)	20 (0%)	2,665 (21%)	2 (0%)	112 (1%)	6,683 (53%)	4 (0%)	0 (0%)	3,016 (24%)	12,504 (100%)
1984-85	2 (0%)	2 (0%)	3,954 (28%)	5 (0%)	145 (1%)	6,736 (47%)	18 (0%)	7 (0%)	3,424 (24%)	14,292 (100%)
1985-86	43 (0%)	4 (0%)	2,114 (17%)	15 (0%)	44 (0%)	5,575 (46%)	0 (0%)	5 (0%)	4,317 (36%)	12,116 (100%)
1986-87	0 (0%)	9 (0%)	958 (10%)	0 (0%)	11 (0%)	4,540 (45%)	0 (0%)	3 (0%)	4,469 (45%)	9,990 (100%)
1987-88	20 (0%)	15 (0%)	3,966 (21%)	1 (0%)	47 (0%)	7,780 (42%)	113 (1%)	18 (0%)	6,555 (35%)	18,414 (100%)
1988-89	7 (0%)	6 (0%)	2,331 (19%)	0 (0%)	35 (0%)	5,502 (45%)	0 (0%)	18 (0%)	4,258 (35%)	12,157 (100%)
1989-90	0 (0%)	14 (0%)	1,251 (9%)	3 (0%)	77 (1%)	6,491 (46%)	4 (0%)	3 (0%)	6,172 (44%)	14,015 (100%)
1990-91	3 (0%)	6 (0%)	622 (6%)	29 (0%)	36 (0%)	5,369 (53%)	0 (0%)	122 (1%)	3,998 (39%)	10,185 (100%)
1991-92	0 (0%)	11 (0%)	1,696 (10%)	883 (5%)	78 (0%)	8,491 (51%)	220 (1%)	0 (0%)	6,184 (37%)	16,464 (100%)
1992-93	8 (0%)	4 (0%)	1,112 (7%)	8 (0%)	14 (0%)	7,900 (51%)	--	3 (0%)	6,475 (42%)	15,527 (100%)

**SOYBEAN SHIPMENTS
BY CROP REPORTING DISTRICT ORIGIN
1992 - 1993**

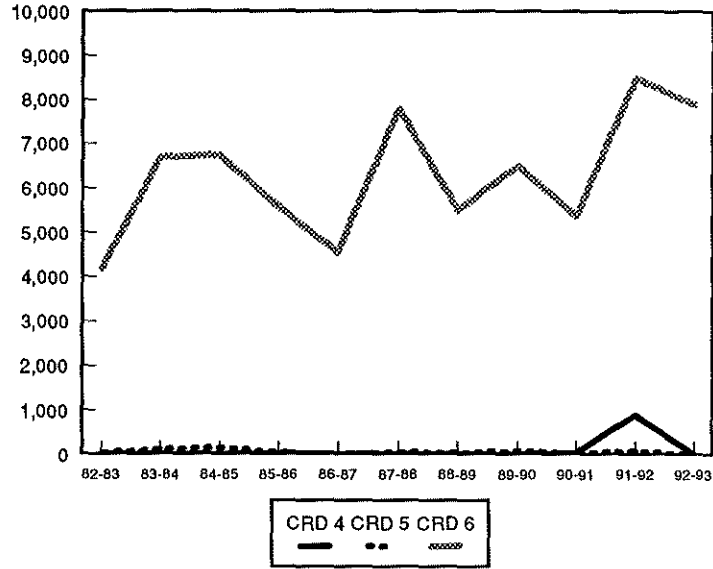


SOYBEAN SHIPMENTS BY CROP REPORTING DISTRICT

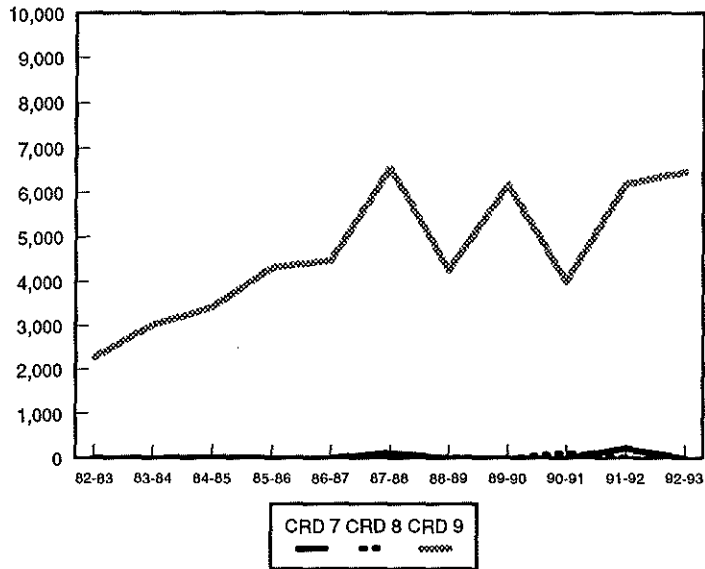
BY NORTHERN CROP REPORTING DISTRICTS
(thousand bushels)



BY CENTRAL CROP REPORTING DISTRICTS
(thousand bushels)



SOUTHERN CROP REPORTING DISTRICTS
(thousand bushels)





***FLAX
SHIPMENTS***

**NORTH DAKOTA FLAXSEED SHIPMENTS
BY DESTINATION
(thousand bu.)**

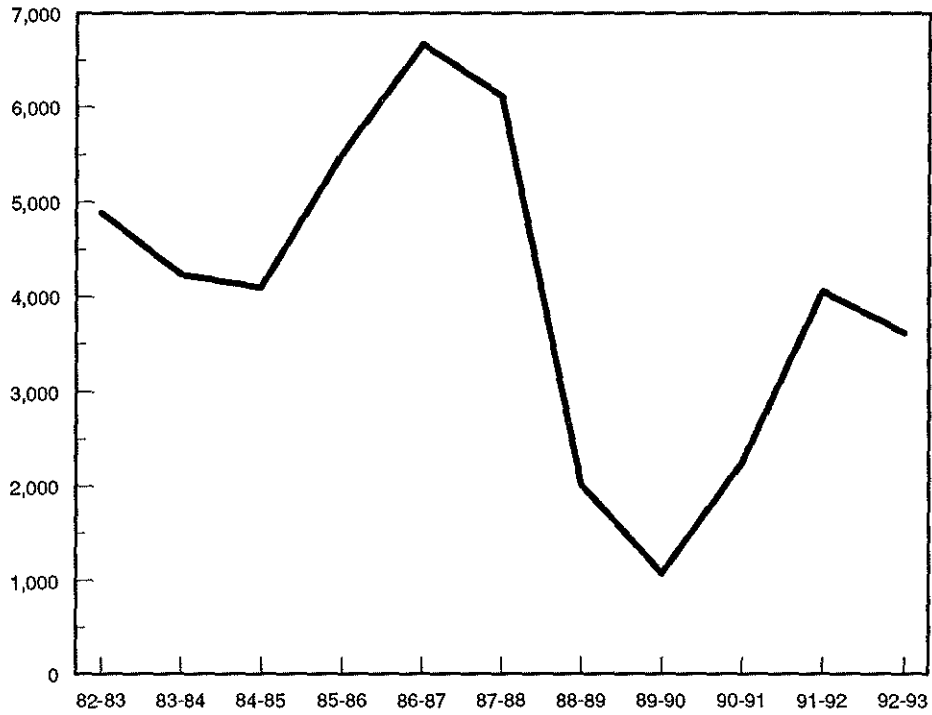
YEAR	MINNEAPOLIS - ST. PAUL	OTHER MINNESOTA - WISCONSIN	NORTH DAKOTA	MISC.	TOTAL
1982-83	1,820 (37%)	-	-	-	4,883 (100%)
1983-84	1,598 (38%)	-	-	-	4,235 (100%)
1984-85	1,555 (38%)	-	-	-	4,098 (100%)
1985-86	2,171 (39%)	-	-	^a	5,503 (100%)
1986-87	1,055 (16%)	1,829 (27%)	2,495 (37%)	1,287 (19%)	6,666 (100%)
1987-88	1,202 (20%)	2,007 (33%)	1,758 (29%)	1,143 (19%)	6,110 (100%)
1988-89	214 (11%)	849 (42%)	650 (32%)	299 (15%)	2,013 (100%)
1989-90	209 (19%)	269 (25%)	425 (39%)	174 (16%)	1,077 (100%)
1990-91	422 (19%)	487 (22%)	1,068 (47%)	281 (12%)	2,258 (100%)
1991-92	1,141 (28%)	504 (12%)	1,750 (43%)	659 (16%)	4,058 (100%)
1992-93	469 (13%)	567 (16%)	1,501 (41%)	1,084 ^b (30%)	3,621 (100%)

^aNot available prior to 1986-87.

^bMiscellaneous markets include shipments to Duluth Superior destinations (19%), Midland/Southwest markets (6%), Pacific Northwest markets (1%), and all other markets (4%).

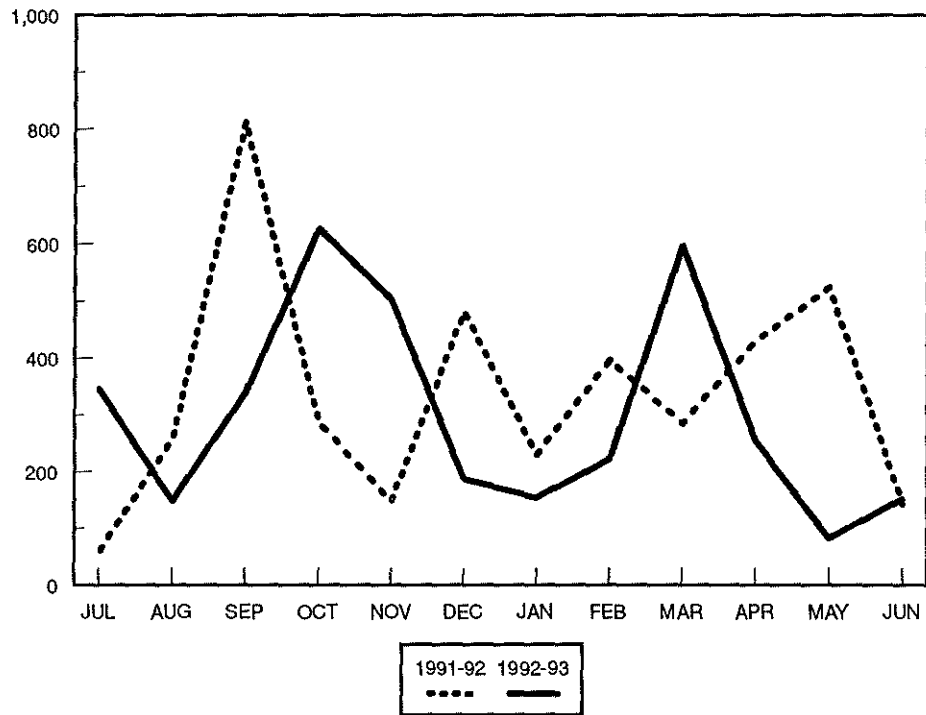
FLAX SHIPMENTS 1982-83 to 1992-93

thousand bushels



FLAX SHIPMENTS BY MONTH, 1991-92 TO 1992-93

thousand bushels

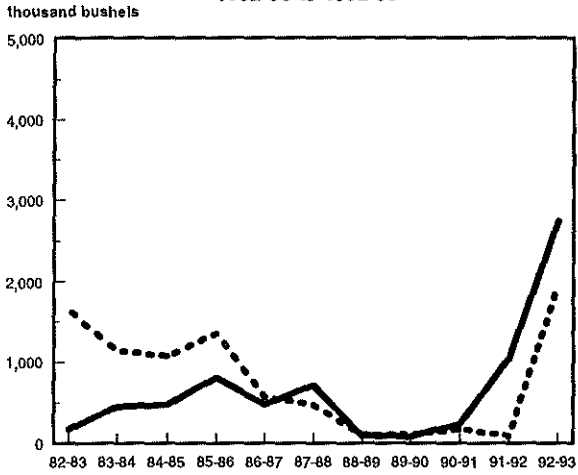


**NORTH DAKOTA FLAXSEED SHIPMENTS
BY RAIL, TRUCK AND DESTINATION
(thousand bu.)**

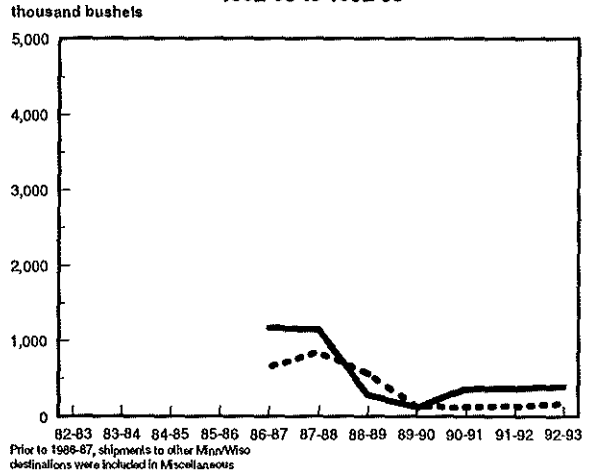
YEAR	MINNEAPOLIS- ST. PAUL		OTHER MINNESOTA - WISCONSIN		NORTH DAKOTA		MISC. MARKETS		TOTAL	
	Rail	Truck	Rail	Truck	Rail	Truck	Rail	Truck	Rail	Truck
1982-83	184 (10%)	1,635 (90%)	-	-	-	-	-	-	749 (15%)	4,134 (85%)
1983-84	455 (29%)	1,143 (71%)	-	-	-	-	-	-	785 (19%)	3,451 (81%)
1984-85	480 (31%)	1,075 (69%)	-	-	-	-	-	-	996 (24%)	3,103 (76%)
1985-86	813 (37%)	1,358 (63%)	-	-	-	-	-	^a	1,768 (32%)	3,736 (68%)
1986-87	478 (45%)	577 (55%)	1,175 (64%)	654 (36%)	413 (17%)	2,082 (83%)	830 (64%)	457 (36%)	2,896 (43%)	3,770 (57%)
1987-88	721 (60%)	481 (40%)	1,152 (57%)	855 (43%)	445 (25%)	1,313 (75%)	404 (35%)	737 (65%)	2,722 (45%)	3,386 (55%)
1988-89	101 (47%)	112 (53%)	288 (34%)	561 (66%)	44 (7%)	606 (93%)	125 (42%)	174 (58%)	559 (28%)	1,454 (72%)
1989-90	92 (44%)	116 (56%)	125 (46%)	144 (54%)	25 (6%)	400 (94%)	61 (35%)	113 (65%)	304 (28%)	773 (72%)
1990-91	238 (56%)	184 (44%)	358 (74%)	129 (26%)	117 (11%)	951 (89%)	145 (52%)	136 (48%)	858 (38%)	1,400 (62%)
1991-92	1,039 (91%)	102 (9%)	364 (72%)	140 (28%)	160 (9%)	1,590 (91%)	499 (76%)	158 (24%)	2,065 (51%)	1,993 (49%)
1992-93	275 (59%)	195 (41%)	398 (70%)	169 (30%)	81 (5%)	1,420 (95%)	819 (75%)	266 (25%)	1,572 (43%)	2,050 (57%)

^aPrior to 1986-87 crop year, Other Minn./Wisconsin and North Dakota destinations were included in "Miscellaneous" Markets. Miscellaneous markets now includes shipments to Duluth-Superior and Pacific Northwest destinations.

**FLAX TO MINNEAPOLIS
1982-83 to 1992-93**

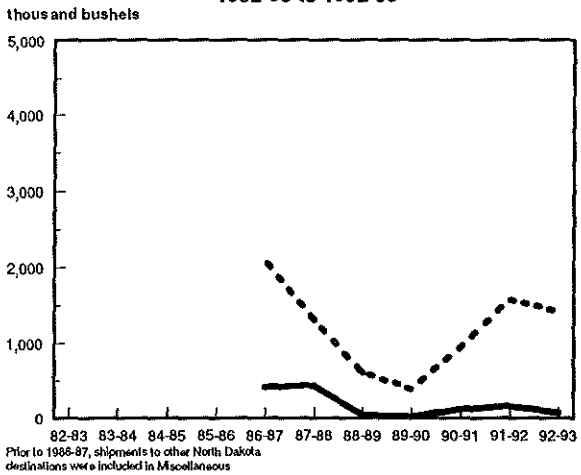


**FLAX TO OTHER MINN/WISC
1982-83 to 1992-93**



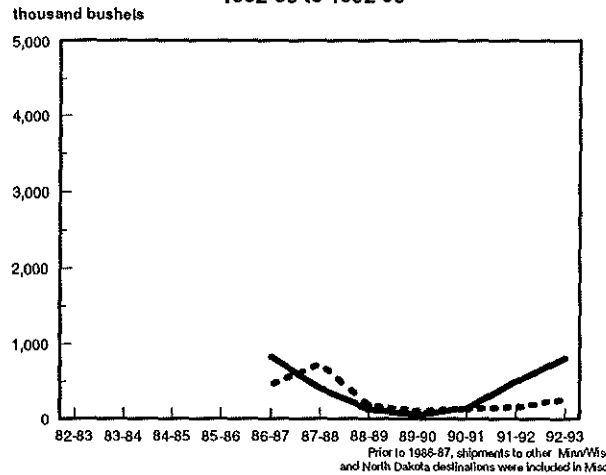
Prior to 1988-87, shipments to other Minn/Wisc destinations were included in Miscellaneous

**FLAX TO NORTH DAKOTA
1982-83 to 1992-93**



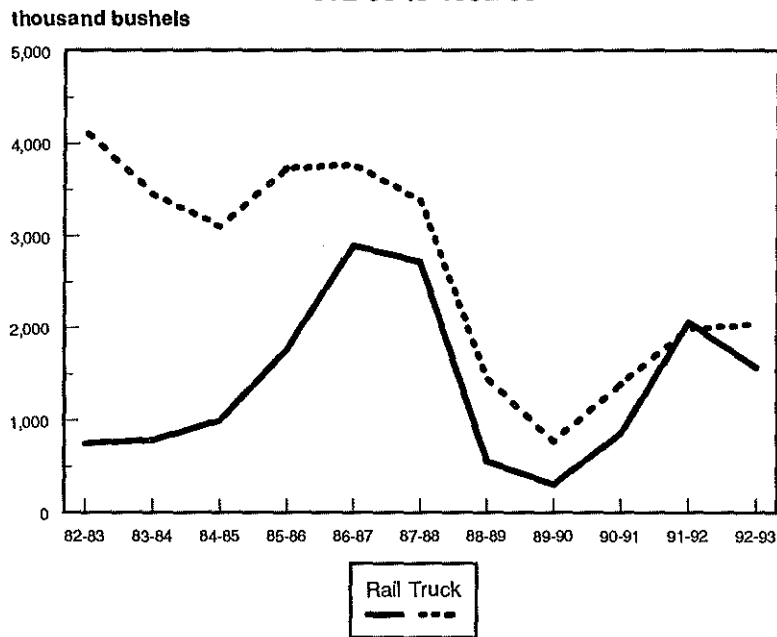
Prior to 1988-87, shipments to other North Dakota destinations were included in Miscellaneous

**FLAX TO MISCELLANEOUS MARKETS
1982-83 to 1992-93**



Prior to 1988-87, shipments to other Minn/Wisc and North Dakota destinations were included in Misc.

**FLAX SHIPMENTS
1982-83 to 1992-93**

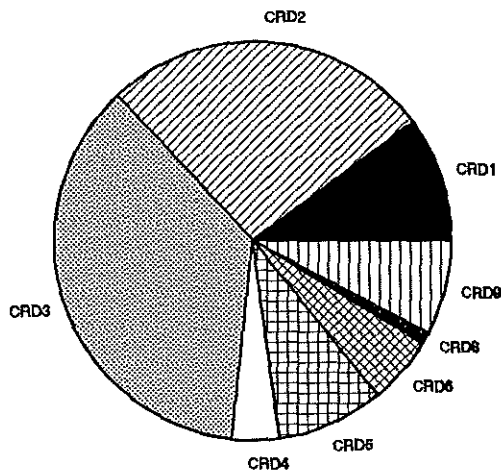


Rail Truck

**NORTH DAKOTA FLAXSEED SHIPMENTS
BY CROP REPORTING DISTRICT ORIGIN
(thousand bu.)**

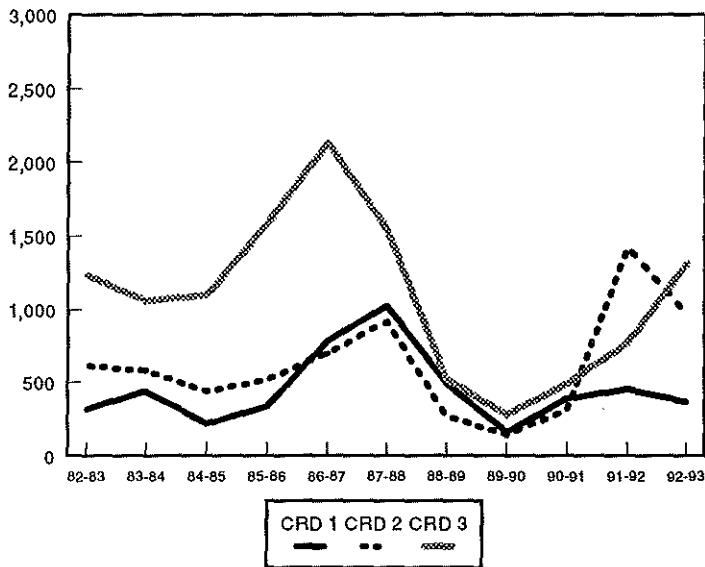
YEAR	Crop Reporting District									TOTAL
	1	2	3	4	5	6	7	8	9	
1982-83	319 (7%)	617 (13%)	1,235 (25%)	323 (7%)	654 (13%)	655 (13%)	67 (1%)	223 (5%)	780 (16%)	4,873 (100%)
1983-84	441 (10%)	579 (14%)	1,062 (25%)	349 (8%)	602 (14%)	227 (5%)	149 (4%)	239 (6%)	587 (14%)	4,235 (100%)
1984-85	217 (5%)	443 (11%)	1,097 (27%)	266 (6%)	541 (13%)	249 (6%)	204 (5%)	265 (6%)	816 (20%)	4,098 (100%)
1985-86	336 (6%)	518 (9%)	1,587 (29%)	373 (7%)	1,188 (22%)	573 (10%)	45 (1%)	247 (4%)	635 (12%)	5,503 (100%)
1986-87	780 (12%)	697 (10%)	2,132 (32%)	454 (7%)	803 (12%)	759 (11%)	62 (1%)	280 (4%)	697 (11%)	6,666 (100%)
1987-88	1,026 (17%)	918 (15%)	1,548 (25%)	545 (9%)	835 (14%)	436 (7%)	54 (1%)	244 (4%)	503 (8%)	6,109 (100%)
1988-89	494 (25%)	268 (13%)	525 (26%)	169 (8%)	187 (9%)	112 (6%)	19 (1%)	67 (3%)	168 (8%)	2,009 (100%)
1989-90	161 (15%)	145 (13%)	276 (26%)	72 (7%)	146 (13%)	84 (8%)	9 (1%)	30 (3%)	154 (14%)	1,077 (100%)
1990-91	388 (17%)	308 (14%)	490 (22%)	102 (5%)	523 (23%)	241 (11%)	4 (0%)	16 (1%)	186 (8%)	2,258 (100%)
1991-92	456 (11%)	1,421 (35%)	769 (19%)	173 (4%)	423 (10%)	413 (10%)	13 (0%)	5 (0%)	381 (9%)	4,058 (100%)
1992-93	367 (10%)	974 (27%)	1,312 (36%)	140 (4%)	313 (9%)	200 (6%)	9 (0%)	25 (1%)	278 (8%)	3,621 (100%)

**FLAXSEED SHIPMENTS
BY CROP REPORTING DISTRICT ORIGIN
1992 - 1993**

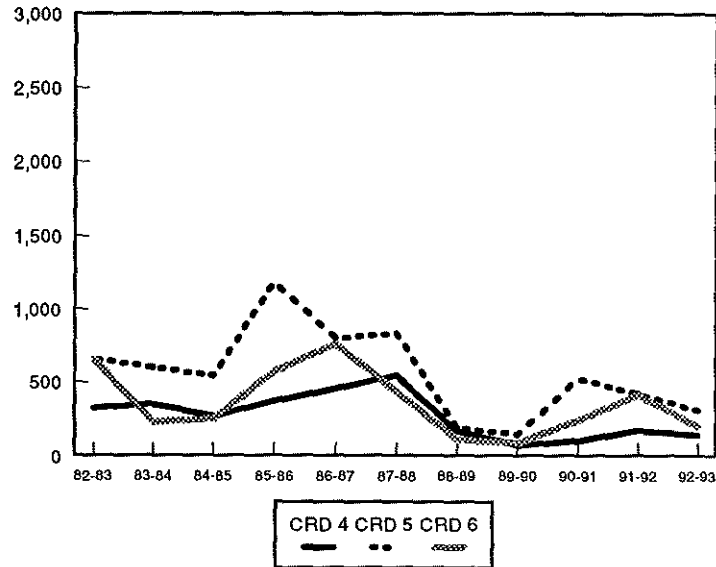


FLAX SHIPMENTS BY CROP REPORTING DISTRICT

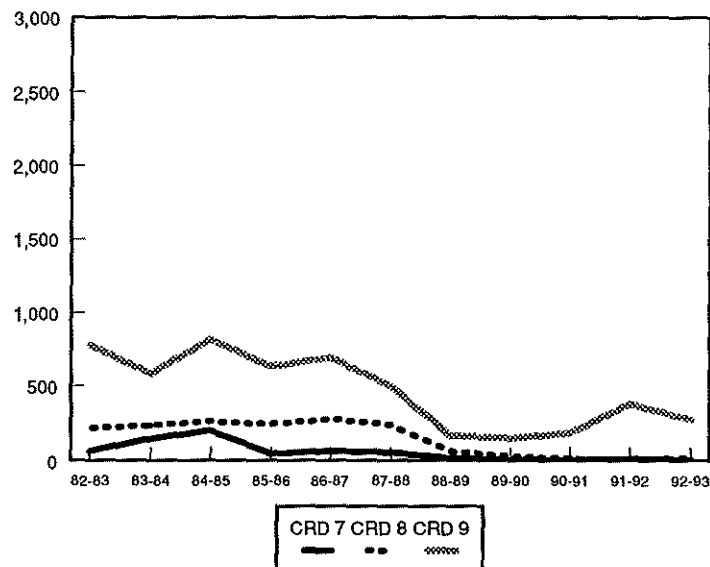
BY NORTHERN CROP REPORTING DISTRICTS
(thousand bushels)



BY CENTRAL CROP REPORTING DISTRICTS
(thousand bushels)



SOUTHERN CROP REPORTING DISTRICTS
(thousand bushels)





***CORN
SHIPMENTS***

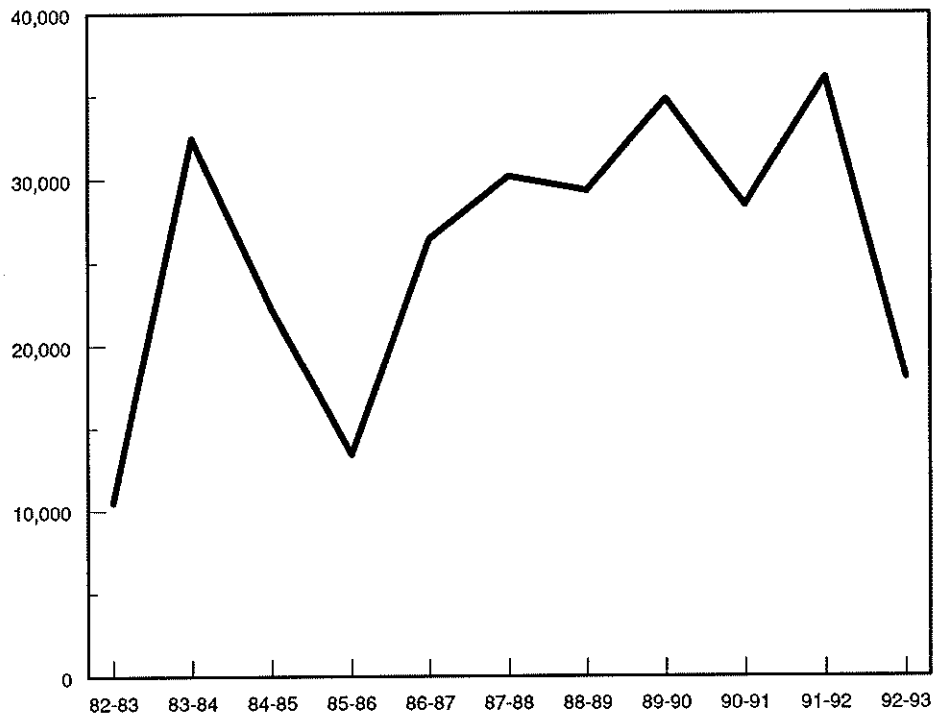
**NORTH DAKOTA CORN SHIPMENTS
BY DESTINATION
(thousand bu.)**

YEAR	MINNEAPOLIS - ST. PAUL	DULUTH - SUPERIOR	WEST	MISC. MARKETS	TOTAL
1982-83	296 (3%)	350 (3%)	5,474 (52%)	4,397 (42%)	10,518 (100%)
1983-84	2,735 (8%)	4,175 (13%)	20,323 (63%)	5,229 (16%)	32,463 (100%)
1984-85	1,189 (5%)	2,859 (13%)	13,659 (60%)	4,916 (22%)	22,623 (100%)
1985-86	1,254 (9%)	68 (1%)	6,488 (48%)	5,584 (42%)	13,394 (100%)
1986-87	359 (1%)	59 (0%)	18,952 (72%)	7,067 (27%)	26,437 (100%)
1987-88	312 (1%)	55 (0%)	23,742 (79%)	6,080 (20%)	30,189 (100%)
1988-89	603 (2%)	1,741 (6%)	21,861 (74%)	5,138 (18%)	29,344 (100%)
1989-90	900 (3%)	358 (1%)	26,133 (75%)	7,374 (21%)	34,764 (100%)
1990-91	944 (3%)	710 (2%)	19,590 (69%)	7,190 (25%)	28,434 (100%)
1991-92	1,556 (4%)	665 (2%)	25,034 (69%)	8,826 (24%)	36,084 (100%)
1992-93	807 (5%)	0 (0%)	8,903 (49%)	8,344 ^a (46%)	18,054 (100%)

^aMiscellaneous markets include shipments to North Dakota destinations (24%), Midland/Southwest destinations (4%), and all other markets (17%).

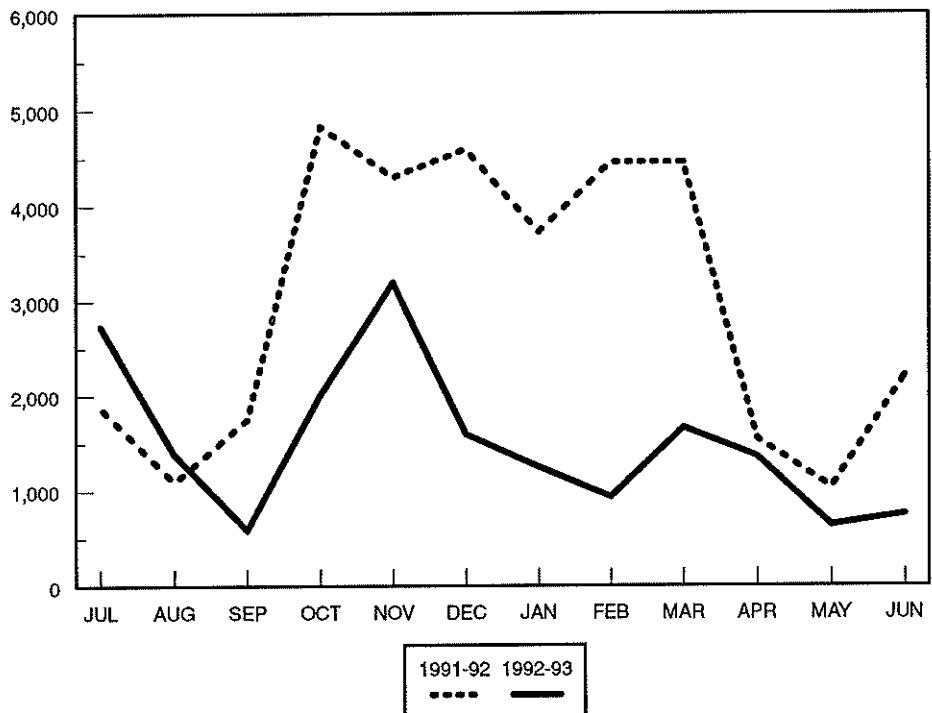
CORN SHIPMENTS 1982-83 to 1992-93

thousand bushels



CORN SHIPMENTS BY MONTH, 1991-92 TO 1992-93

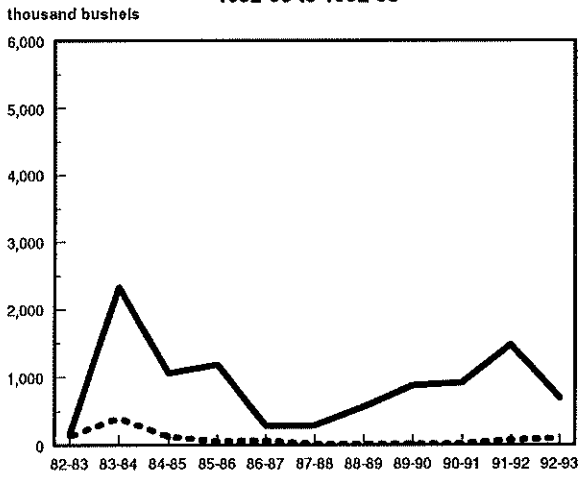
thousand bushels



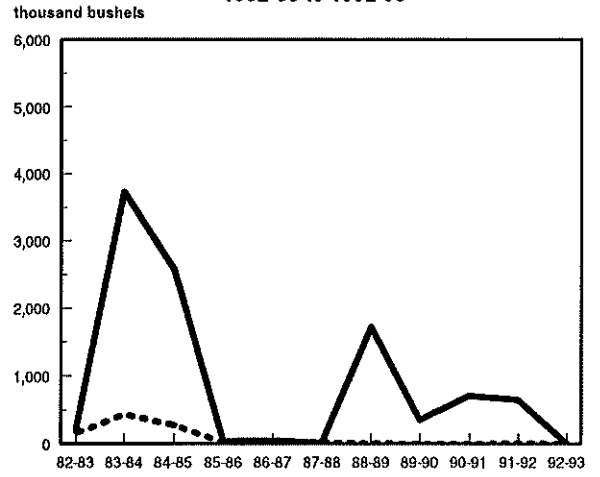
**NORTH DAKOTA CORN SHIPMENTS
BY RAIL, TRUCK AND DESTINATION
(thousand bu.)**

YEAR	MINNEAPOLIS - ST. PAUL		DULUTH - SUPERIOR		WEST		MISC. MARKETS		TOTAL	
	Rail	Truck	Rail	Truck	Rail	Truck	Rail	Truck	Rail	Truck
1982-83	155 (52%)	141 (48%)	196 (56%)	154 (44%)	4,748 (87%)	726 (13%)	1,731 (39%)	2,666 (61%)	6,831 (65%)	3,687 (35%)
1983-84	2,332 (85%)	404 (15%)	3,737 (90%)	438 (10%)	20,133 (99%)	190 (1%)	3,034 (58%)	2,195 (42%)	29,236 (90%)	3,228 (10%)
1984-85	1,057 (89%)	132 (11%)	2,579 (90%)	280 (10%)	13,623 (100%)	36 (0%)	1,156 (24%)	3,759 (76%)	18,415 (81%)	4,207 (19%)
1985-86	1,185 (95%)	69 (5%)	43 (64%)	24 (36%)	6,305 (97%)	183 (3%)	2,815 (50%)	2,769 (50%)	10,348 (77%)	3,046 (23%)
1986-87	287 (80%)	71 (20%)	56 (95%)	3 (5%)	18,407 (97%)	544 (3%)	2,703 (38%)	4,364 (62%)	21,454 (81%)	4,982 (19%)
1987-88	291 (93%)	21 (7%)	14 (25%)	41 (75%)	23,742 (99%)	236 (1%)	2,524 (42%)	3,556 (58%)	26,571 (87%)	3,854 (13%)
1988-89	570 (95%)	32 (5%)	1,727 (99%)	13 (1%)	21,498 (98%)	362 (2%)	2,175 (42%)	2,962 (58%)	25,972 (89%)	3,371 (11%)
1989-90	876 (97%)	24 (3%)	357 (100%)	1 (0%)	25,720 (98%)	412 (2%)	3,914 (53%)	3,460 (47%)	30,867 (89%)	3,897 (11%)
1990-91	915 (97%)	28 (3%)	708 (100%)	2 (0%)	19,555 (100%)	35 (0%)	3,913 (54%)	3,278 (46%)	25,091 (88%)	3,343 (12%)
1991-92	1,474 (95%)	81 (5%)	651 (98%)	13 (2%)	24,641 (98%)	392 (2%)	4,731 (54%)	4,093 (46%)	31,501 (87%)	4,583 (13%)
1992-93	705 (87%)	102 (13%)	0 (0%)	0 (0%)	8,807 (99%)	96 (1%)	2,680 (32%)	5,663 (68%)	12,192 (68%)	5,861 (32%)

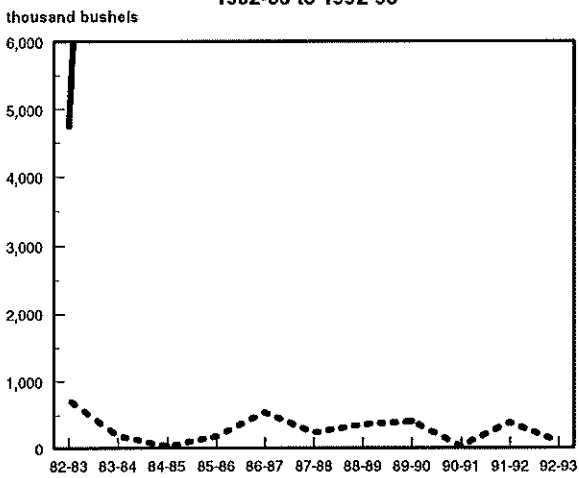
**CORN TO MINNEAPOLIS
1982-83 to 1992-93**



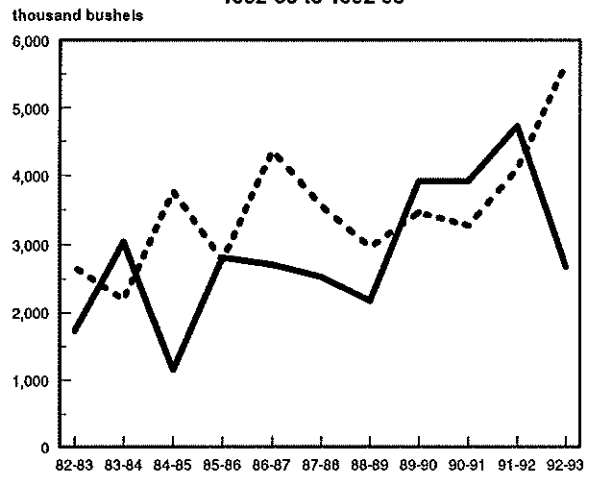
**CORN TO DULUTH-SUPERIOR
1982-83 to 1992-93**



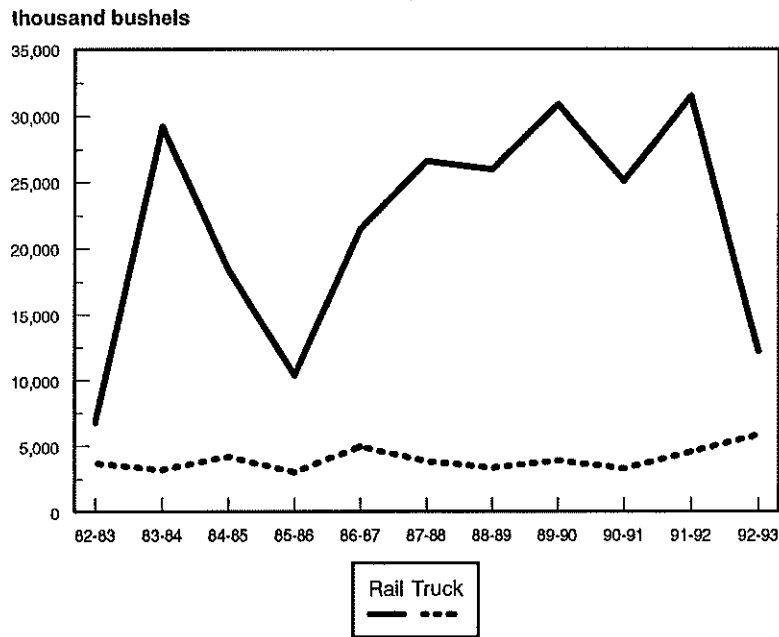
**CORN TO WEST
1982-83 to 1992-93**



**CORN TO MISCELLANEOUS MARKETS
1982-83 to 1992-93**



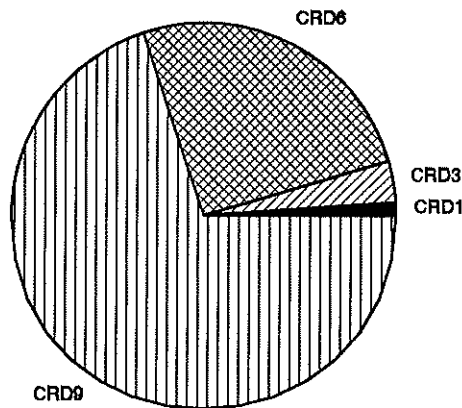
**CORN SHIPMENTS
1982-83 to 1992-93**



**NORTH DAKOTA CORN SHIPMENTS
BY CROP REPORTING DISTRICT
(thousand bu.)**

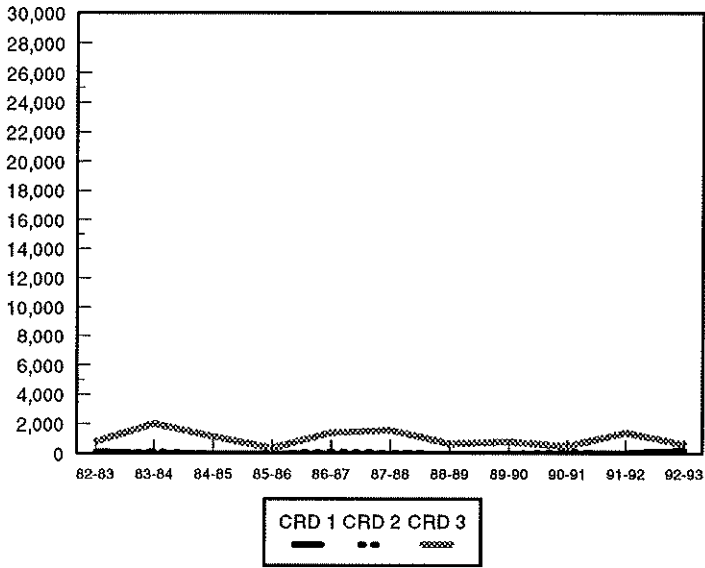
YEAR	Crop Reporting District									TOTAL
	1	2	3	4	5	6	7	8	9	
1982-83	121 (1%)	6 (0%)	791 (8%)	33 (0%)	137 (1%)	3,132 (30%)	5 (0%)	0 (0%)	6,293 (60%)	10,518 (100%)
1983-84	12 (0%)	139 (0%)	1,997 (6%)	242 (1%)	1,159 (4%)	9,477 (29%)	249 (1%)	224 (1%)	18,963 (58%)	32,463 (100%)
1984-85	0 (0%)	20 (0%)	1,109 (5%)	49 (0%)	600 (3%)	6,800 (30%)	496 (2%)	304 (1%)	13,246 (59%)	22,623 (100%)
1985-86	1 (0%)	9 (0%)	334 (2%)	12 (0%)	162 (1%)	3,181 (24%)	12 (0%)	11 (0%)	9,671 (72%)	13,394 (100%)
1986-87	0 (0%)	129 (0%)	1,394 (5%)	95 (0%)	383 (1%)	9,360 (35%)	54 (0%)	12 (0%)	15,008 (57%)	26,437 (100%)
1987-88	14 (0%)	26 (0%)	1,591 (5%)	127 (0%)	582 (2%)	8,516 (28%)	9 (0%)	116 (0%)	19,445 (64%)	30,426 (100%)
1988-89	12 (0%)	0 (0%)	648 (2%)	40 (0%)	173 (1%)	6,926 (23%)	0 (0%)	0 (0%)	21,542 (73%)	29,341 (100%)
1989-90	7 (0%)	0 (0%)	797 (2%)	7 (0%)	153 (1%)	7,784 (22%)	1 (0%)	0 (0%)	26,015 (75%)	34,764 (100%)
1990-91	0 (0%)	144 (1%)	479 (2%)	142 (0%)	78 (0%)	6,812 (24%)	0 (0%)	871 (3%)	19,908 (70%)	28,434 (100%)
1991-92	30 (0%)	18 (0%)	1,391 (4%)	20 (0%)	593 (2%)	9,660 (27%)	1 (0%)	17 (0%)	24,350 (67%)	36,084 (100%)
1992-93	208 (1%)	6 (0%)	623 (3%)	11 (0%)	27 (0%)	4,599 (25%)	1 (0%)	7 (0%)	12,567 (70%)	18,053 (100%)

**CORN SHIPMENTS
BY CROP REPORTING DISTRICT ORIGIN
1992 - 1993**

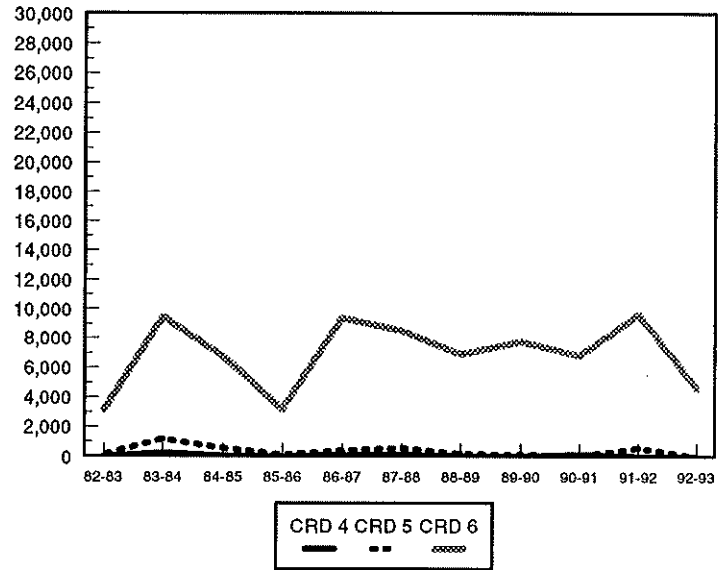


CORN SHIPMENTS BY CROP REPORTING DISTRICT

BY NORTHERN CROP REPORTING DISTRICTS
(thousand bushels)



BY CENTRAL CROP REPORTING DISTRICTS
(thousand bushels)



SOUTHERN CROP REPORTING DISTRICTS
(thousand bushels)

