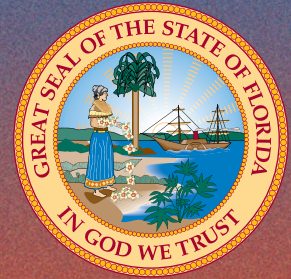


FLORIDA DEPARTMENT OF HIGHWAY SAFETY
AND MOTOR VEHICLES



Traffic Crash Facts *2002*

A Compilation of Motor Vehicle Crash Data from the Florida Crash Records Database



Office of Management Research
and Development

2002 FLORIDA TRAFFIC CRASH STATISTICS



Traffic crashes	250,470	Alcohol-related fatal crashes	894
Drivers Involved	371,887	Alcohol-related injury crashes	10,385
Average crashes per day	686	Pedestrians killed	484
Mileage Death Rate (per 100 million VM)	1.8	Pedestrians injured	7,447
Fatalities	3,143	Pedestrian crashes	8,060
Fatal crashes	2,816	Bicyclists killed	108
Injuries	229,611	Bicyclists injured	4,970
Injury crashes	142,992	Bicycle crashes	5,380
Property damage only crashes	104,662	Motorcyclists killed	274
Alcohol-related fatalities	1,007	Motorcyclists injured	5,384
Alcohol-related injuries	16,864	Motorcycle crashes	5,972
Alcohol-related crashes	21,533		

NOTE: In 2002, vehicle miles driven increased by 7.7 billion and registered motorcycles increased by 35.5 percent. The mileage death rate remained at 1.8 per one hundred million vehicle miles driven.

Prepared By:

Office of Executive Director
 Florida Department of Highway Safety and Motor Vehicles
 Neil Kirkman Building, M.S. 04, Tallahassee, FL 32399-0505
 Telephone Assistance: (850) 488-4300

This publication is available on the Department of Highway Safety and Motor Vehicles Web site at <http://www.hsmv.state.fl.us>



State of Florida
**DEPARTMENT OF
HIGHWAY SAFETY AND MOTOR VEHICLES**

FRED O. DICKINSON
Executive Director

JEB BUSH
Governor

CHARLIE CRIST
Attorney General

TOM GALLAGHER
Chief Financial Officer

CHARLES H. BRONSON
Commissioner of Agriculture

October 29, 2003

Dear Reader:

I am pleased to present the *2002 Florida Crash Facts Report*. This report contains data from the Department's crash database, compiled from traffic crash reports completed by state and local law enforcement agencies.

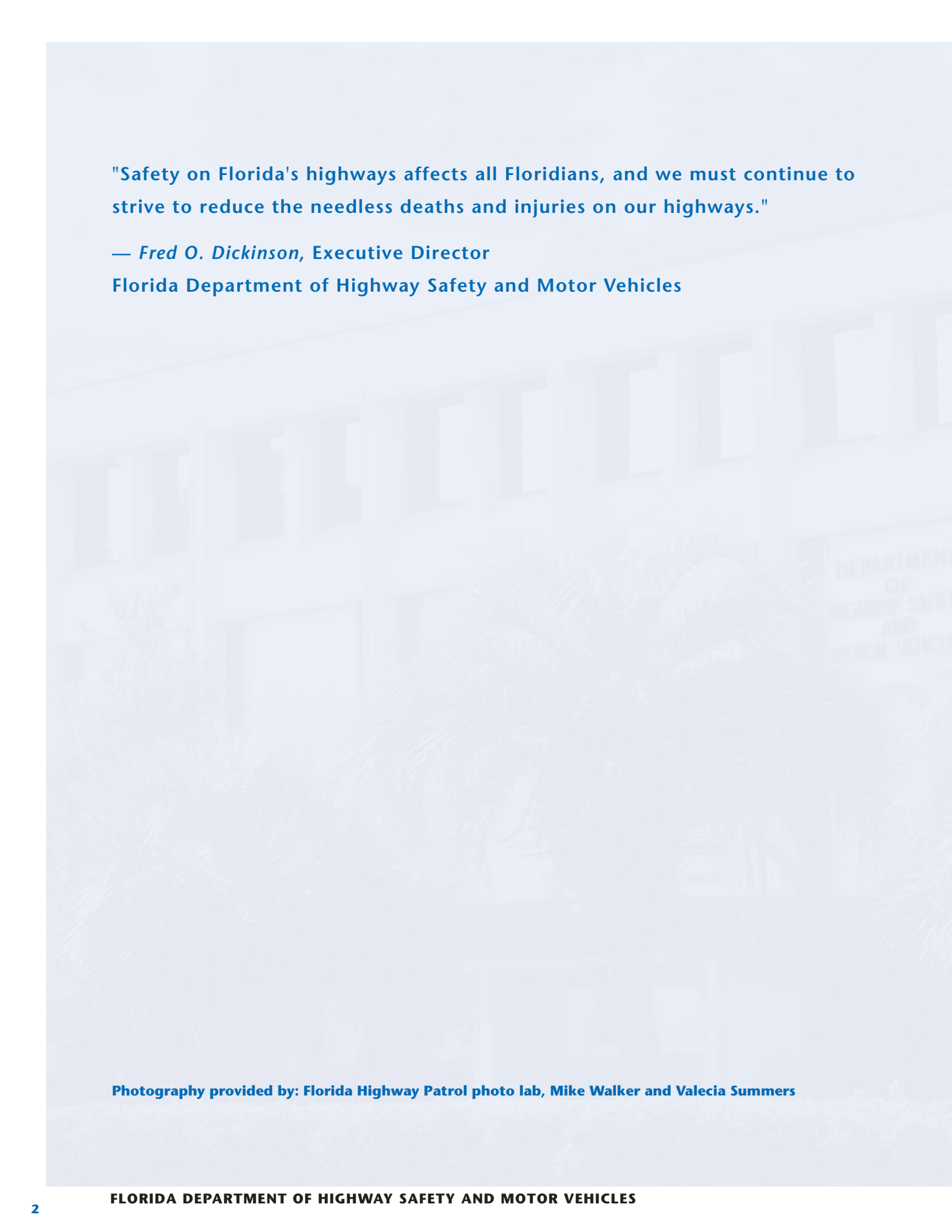
In 2002, Florida continued to see improvements in traffic safety. Statewide, the number of traffic crashes reported and investigated was down 2.2 percent from 2001. Alcohol-related fatalities, as a percent of total fatalities, decreased by 1.2 percent. The mileage death rate remained at 1.8 per one hundred million vehicle miles traveled, even with a significant increase of 7.7 billion in the number of vehicle miles driven on Florida's highways.

In the aggregate, crash statistics provide a comprehensive understanding of highway safety issues and assist in the development of education and enforcement programs in targeted areas. However, each statistic represents an individual story, ranging from a minor inconvenience to a major life-changing tragedy. Safety on Florida's highways affects all Floridians, and we must continue to strive to reduce the needless deaths and injuries on our highways.

On behalf of the Department, I extend appreciation and recognition to the law enforcement officers who, in addition to responding to the immediate needs of crash victims on the scene, also collect vital crash data that helps make highways safer in the future for Floridians, visitors, and their families.

Sincerely,

Fred O. Dickinson
Executive Director



"Safety on Florida's highways affects all Floridians, and we must continue to strive to reduce the needless deaths and injuries on our highways."

— *Fred O. Dickinson*, Executive Director

Florida Department of Highway Safety and Motor Vehicles

Photography provided by: Florida Highway Patrol photo lab, Mike Walker and Valecia Summers

SOURCE OF DATA

The information contained in this *Traffic Crash Facts* booklet is extracted from law enforcement agency long-form reports of traffic crashes. A law enforcement officer must submit a long-form crash report when investigating:

- Motor vehicle crashes resulting in death or personal injury, or
- Motor vehicle crashes in which one or more of the following conditions occur:
 - Leaving the scene involving damage to an attended vehicle or property (Section 316.061 (1), F.S.), or
 - Driving while under the influence of alcoholic beverages, chemical substances, or controlled substances or with an unlawful blood alcohol level (Section 316.193, F.S.).

An investigating officer may report other traffic crashes on the long-form crash report. In particular, applicable statutes specify an officer's discretion to submit a long-form report in crashes where a vehicle is rendered inoperable to the degree that a wrecker is required to remove it from traffic.

Statutory revisions in 1983 and 1989 reduced the number of non-injury crashes required to be reported to the Department. Any presentation of historical data that includes such crashes, such as total traffic crash counts, will reflect these changes. Data on traffic crashes involving death, injury, or other criteria for law enforcement long-form reports as outlined above are not affected.



TABLE OF CONTENTS

SOURCE OF DATA	3
DEFINITION OF TERMS	8
STATE OF FLORIDA SUMMARY	9
Safety Equipment Use in Crashes	
Equipment Used By Drivers	12
Equipment Used by Vehicle Occupants Other Than Drivers	12
Equipment Used By Drivers and Other Vehicle Occupants	12
Equipment Used By Motorcyclists and Their Passengers.....	13
Equipment Used By Bicyclists and Their Passengers	13
Child Passengers and Safety Equipment	
Child Restraint Device and Safety Belt Use by Age	14
Child Passengers Injured or Killed	14
Age of Drivers in Crashes	
Crash Rates for Florida Resident Drivers in All Crashes by Age Groups.....	15
Crash Rates for Florida Resident Drinking Drivers in All Crashes By Age Groups.....	15
Selected Age Groups	
Crash Rates for Florida Resident Drivers	
In All Crashes for a Selected Age Group (15 - 29)	16
Crash Rates for Florida Resident Drivers	
In All Crashes for a Selected Age Group (70 - 85+)	16
Crash Rates for Florida Resident Drinking	
Drivers in All Crashes for a Selected Age Group (15 - 29).....	17
Crash Rates for Florida Resident Drinking	
Drivers in All Crashes for a Selected Age Group (70 – 85+)	17
Driver Profile	
Drivers Killed or Injured by Residence and Gender.....	18
Drivers Involved in Crashes by Age Groups.....	18
Persons in Crashes by Age and Gender	
Persons Killed	19
Persons Injured.....	19
Motorcyclists and Bicyclists Crash Trends	
Motorcyclists and Bicyclists Killed	20
Motorcyclists and Bicyclists Injured.....	20
Pedestrian Fatality Trend	
Pedestrians Killed.....	21
Pedestrians Injured	21
Pedestrian Fatality Rate.....	22
Pedestrian Behavior	
Pedestrians Killed in Crashes by Age and Type of Actions.....	23
Pedestrians Injured in Crashes by Age and Type of Actions	23
Pedestrians in Crashes by Age and Percent Drinking	24
Pedestrians in Crashes by Injury Severity and Percent Drinking	24

(continued on PAGE 7)



FLORIDA DEPARTMENT OF HIGHWAY SAFETY AND MOTOR VEHICLES

TABLE OF CONTENTS (continued from PAGE 5)

Truck Passengers

Passengers Riding in Beds of Trucks	
By Age and Truck Type	25

Florida Motoring Environment

Motoring Environment	26
Holiday Traffic Fatalities	27

Traffic Crashes by Month

All Crashes.....	28
Fatal Crashes	28

Traffic Crashes by Day of Week and Time of Day

All Crashes/Fatal Crashes	29
---------------------------------	----

Contributing Causes

Actions Attributed to Drivers Involved in Crashes.....	30
--	----

Environmental Causes

Lighting Conditions at the Time of Crash	31
Road Surface Conditions at the Time of Crash	31
Vehicle Harmful Events	31

County Data (1998 through 2002)

Crash History.....	33
Alcohol-Related Crash History.....	34
Fatality History	35
Alcohol-Related Fatality History	36
Injury History.....	37
Alcohol-Related Injury History.....	38
Property Damage Only Crash History	39
Motorcycle Fatality History	40
Motorcycle Injury History	41
Bicycle Fatality History	42
Bicycle Injury History	43
Pedestrian Fatality History.....	44
Pedestrian Injury History.....	45

Vehicle and Truck Information

Crashes by Vehicle Type	46
Truck Crashes by Contributing Cause	46
Alcohol-Related Crashes by City/Locality	45-52
Florida Traffic Crash Facts Forms	

DEFINITION OF TERMS

*The following terms are defined as they apply to the crash data presented in this publication.
These definitions may differ from legal or other uses of the same terms.*

Alcohol-related traffic crash

A crash involving a driver and/or pedestrian for whom alcohol use was reported (does not presume intoxication).

Bicycle

A vehicle propelled solely by human power or a motorized bicycle propelled by a combination of human power and an electric helper motor rated at 200 watts or less (this term does not include a vehicle with a seat height less than 26 inches from the ground when the seat is adjusted to its highest position, or a scooter or similar device).

Bicyclist

The driver of a bicycle. A passenger on a bicycle is considered a vehicle passenger.

Driver

Unless otherwise indicated, the operator of a motor vehicle or bicycle. Driver data typically exclude uninjured persons presumed to have been operating hit-and-run, phantom, or properly parked vehicles.

Fatal traffic crash

A traffic crash that results in one or more fatalities within thirty days of occurrence.

Harmful events

Identifies the first and subsequent harmful events for each vehicle in a traffic crash.

Injury

Hurt, damage, or loss sustained by a person as a result of a traffic crash.

Possible injury

No visible signs of injury but complaint of pain or momentary unconsciousness.

Non-Incapacitating injury

Any visible injuries such as bruises, abrasions, limping, etc.

Incapacitating injury

Any visible signs of injury from a crash or person(s) who had to be carried from the scene.

Total injury

The sum of possible, non-incapacitating, and incapacitating injuries.

Injury crash

A non-fatal traffic crash that results in one or more injuries.

Moped

A motor-powered cycle with a pedal-activated motor and a maximum of two brake horsepower.

Motor vehicle

Any motorized vehicle not operating on rails.

Motorcycle

A motor vehicle, with a seat or saddle for the driver's use, traveling with no more than three wheels in contact with the ground, excluding a tractor or a moped.

Motorcyclist

The driver of a motorcycle. A passenger on a motorcycle is considered a vehicle passenger.

Vehicle and/or Property damage only crash

Loss of all or part of an individual's vehicle and/or property resulting from a traffic crash not involving injury to a person.

Traffic crash

A crash involving at least one motor vehicle on a roadway that is open to the public.

Traffic fatality

The death of a person as a direct result of a traffic crash within thirty days of the crash occurrence.

Vehicle occupants

Drivers and passengers of automobiles, vans, trucks, buses, and motor homes.

Long form

Refers to a crash report prepared by a law enforcement officer where there has been a crash resulting in bodily injury, the death of a person or where a specified criminal offense has been committed.

Short form

Refers to a crash report in which the threshold of the long form does not apply. Therefore, a long form report is not prepared. In crashes where apparent damage is less than \$500, the law enforcement officer shall provide each party involved in the crash a short form prescribed by the state, to be completed by each party or the parties.

STATE OF FLORIDA SUMMARY

ALL CRASHES

Compared to 2001, there was a 2.2% decrease in traffic crashes investigated and reported.

Traffic crashes	250,470
Drivers involved	371,887
Average crashes per day	686

FATAL CRASHES AND FATALITIES

Compared to 2001, there was a 4.3% increase in traffic fatalities.

Fatalities	3,143
Fatal crashes	2,816

INJURY CRASHES

Compared to 2001, there was a 2.1% decrease in traffic injuries.

Possible injuries	122,447
Non-incapacitating injuries	76,643
Incapacitating injuries	30,521
Total injuries	229,611
Injury crashes	142,992

ALCOHOL-RELATED CRASHES AND FATALITIES

32% of traffic fatalities and 8.6% of traffic crashes were alcohol-related.

Alcohol-related fatalities	1,007
Alcohol-related injuries	16,864
Alcohol-related crashes	21,533
Alcohol-related fatal crashes	894
Alcohol-related injury crashes	10,385

CRASH ENVIRONMENTS

60.2% of all crashes occurred primarily in business areas, while 58.8% of fatal crashes were in open country or residential areas.

Crashes in Business Areas	150,746
Crashes in Residential Areas	72,447
Crashes in Open Country	27,275
Fatal Crashes in Business Areas	1,161
Fatal Crashes in Residential Areas	730
Fatal Crashes in Open Country	925

PEDESTRIAN CRASHES

15.4% of all traffic fatalities were pedestrians.

Pedestrians killed	484
Pedestrians injured	7,447
Pedestrian crashes*	8,060

BICYCLE CRASHES

3.4% of all traffic fatalities were bicycle drivers.

Bicyclists killed	108
Bicyclists injured	4,970
Bicycle crashes*	5,380

MOTORCYCLE CRASHES

8.7% of all traffic fatalities were motorcycle drivers.

Motorcyclists killed	274
Motorcyclists injured	5,384
Motorcyclists crashes	5,972

**Pedestrian and bicycle crashes included all crashes involving pedestrians or bicycles and are not comparable to crashes by the first harmful event as reported in previous editions.*



SAFETY EQUIPMENT USE IN CRASHES

Does not include cases with safety equipment use or injury level not stated.



TABLE 1

Comparative Safety Equipment Use By DRIVERS

VEHICLE OCCUPANTS WITH	No Injury		Possible Injury		Non-Incapacitating Injury		Incapacitating Injury		Fatal		% Total	TOTAL
	Injury	%	Injury	%	Injury	%	Injury	%		%		
Safety Belt	139,455	65.80	43,826	20.68	21,426	10.11	6,951	3.28	273	0.13	100	211,931
Belt & Bag (Deployed)	19,778	41.76	12,463	26.31	10,997	23.22	3,903	8.24	223	0.47	100	47,364
Belt & Bag (Not Deployed)	41,525	63.07	14,925	22.67	7,061	10.73	2,254	3.42	71	0.11	100	65,836
Air Bag Only (Deployed)	580	22.25	532	20.41	739	28.35	601	23.05	155	5.95	100	2,607
Air Bag Only (Not Deployed)	519	36.50	301	21.17	347	24.40	202	14.21	53	3.73	100	1,422
Not Using Safety Equipment	12,475	48.52	4,937	19.20	4,890	19.02	2,847	11.07	560	2.18	100	25,709
TOTAL	214,332		76,984		45,460		16,758		1,335			354,869

Comparative Safety Equipment Use By VEHICLE OCCUPANTS OTHER THAN DRIVERS

VEHICLE OCCUPANTS WITH	No Injury		Possible Injury		Non-Incapacitating Injury		Incapacitating Injury		Fatal		% Total	TOTAL
	Injury	%	Injury	%	Injury	%	Injury	%		%		
Safety Belt	63,376	63.75	22,447	22.58	10,264	10.32	3,197	3.22	129	0.13	100	99,413
Belt & Bag (Deployed)	4,463	39.63	3,138	27.87	2,601	23.10	989	8.78	70	0.62	100	11,261
Belt & Bag (Not Deployed)	11,419	60.16	4,704	24.78	2,087	10.99	736	3.88	36	0.19	100	18,982
Air Bag Only (Deployed)	198	19.86	246	24.67	300	30.09	199	19.96	54	5.42	100	997
Air Bag Only (Not Deployed)	480	42.29	279	24.58	218	19.21	134	11.81	24	2.11	100	1,135
Not Using Safety Equipment	20,240	62.13	5,451	16.73	4,255	13.06	2,287	7.02	346	1.06	100	32,579
TOTAL	100,176		36,265		19,725		7,542		659			164,367

Sixty-six percent of drivers using safety belts avoided injury (TABLE 1) compared to 48.5 percent for those drivers not using safety equipment. For those drivers using safety belts only, non-incapacitating injuries, incapacitating injuries, and fatal injuries were 10.11 percent, 3.28 percent, and 0.13 percent respectively. The corresponding figures for drivers not using safety equipment were 19 percent, 11 percent, and 2.18 percent. The use of safety belts with air bags deployed was more effective than the use of air bags deployed only in preventing injury and reducing both non-incapacitating and incapacitating and fatal injuries. The use of air bags only was the least effective way to avoid traffic injuries because air bags by themselves protect only in frontal crashes. Air bags offer maximum protection when used as supplemental protection for belted front-seat occupants in frontal crashes. For occupants other than drivers, use of safety belts only is more effective in reducing non-incapacitating injuries, incapacitating injuries and fatal injuries (TABLE 1).

TABLE 1A

Comparative Safety Equipment Use By DRIVERS AND OTHER VEHICLE OCCUPANTS

VEHICLE OCCUPANTS WITH	No Injury		Possible Injury		Non-Incapacitating Injury		Incapacitating Injury		Fatal		% Total	TOTAL
	Injury	%	Injury	%	Injury	%	Injury	%		%		
Safety Belt	202,831	65.15	66,273	21.29	31,690	10.18	10,148	3.26	402	0.13	100	311,344
Belt & Bag (Deployed)	24,241	41.35	15,601	26.61	13,598	23.19	4,892	8.34	293	0.50	100	58,625
Belt & Bag (Not Deployed)	52,944	62.42	19,629	23.14	9,148	10.79	2,990	3.53	107	0.13	100	84,818
Air Bag Only (Deployed)	778	21.59	778	21.59	1,039	28.83	800	22.20	209	5.80	100	3,604
Air Bag Only (Not Deployed)	999	39.07	580	22.68	565	22.10	336	13.14	77	3.01	100	2,557
Not Using Safety Equipment	32,715	56.13	10,388	17.82	9,145	15.69	5,134	8.81	906	1.55	100	58,288
TOTAL	314,508		113,249		65,185		24,300		1,994*			519,236

*Sixty Percent (60%) of fatalities were not wearing seatbelts.

SAFETY EQUIPMENT USE IN CRASHES

Does not include cases with safety equipment use or injury level not stated.

TABLE 1B

Comparative Safety Equipment Use By MOTORCYCLISTS AND THEIR PASSENGERS



MOTORCYCLISTS	No Injury	%	Possible Injury	%	Non-Incapacitating Injury	%	Incapacitating Injury	%	Fatal	%	% Total	TOTAL
With Safety Helmet												
Driver	193	6.92	441	15.82	1,241	44.51	811	29.09	102	3.66	100	2,788
Passenger	27	8.88	57	18.75	122	40.13	93	30.59	5	1.64	100	304
SUBTOTAL	220		498		1,363		904		107			3,092
Without Safety Helmet												
Driver	312	9.26	550	16.33	1,361	40.40	974	28.91	172	5.11	100	3,369
Passenger	77	16.08	84	17.54	172	35.91	121	25.26	25	5.22	100	479
SUBTOTAL	389		634		1,533		1,095		197			3,848
TOTAL	609		1,132		2,896		1,999		304			6,940

TABLE 1C

Comparative Safety Equipment Use By BICYCLISTS AND THEIR PASSENGERS

BICYCLISTS	No Injury	%	Possible Injury	%	Non-Incapacitating Injury	%	Incapacitating Injury	%	Fatal	%	% Total	TOTAL
With Safety Helmet												
Driver	32	6.03	133	25.05	283	53.30	78	14.69	5	0.94	100	531
Passenger	6	75.00	1	12.50	1	12.50	0	0.00	0	0.00	100	8
SUBTOTAL	38		134		284		78		5			539
Without Safety Helmet												
Driver	338	6.91	1,394	28.48	2,267	46.31	793	16.20	103	2.10	100	4,895
Passenger	39	38.24	32	31.37	22	21.57	8	7.84	1	0.98	100	102
SUBTOTAL	377		1,426		2,289		801		104			4,997
TOTAL	415		1,560		2,573		879		109			5,536

While the use of protective equipment by motorcyclists and their passengers is expected to be more effective in preventing incapacitating and fatal injuries, the inclusion of all types of bodily injuries for motorcyclists and passengers fails to show the true effect of safety helmet use (TABLE 1B). The data for bicyclists and their passengers are more supportive of the use of helmet. However, the independent effect of helmet use again can not be determined due to inclusion of the severity of injury rather than the type of injury in the data collection instrument, where head injuries can be directly related to the use of helmets (TABLE 1C).

NOTE: In 2002, registered motorcycles increased by 33.5 percent over 2001 registrations. Injuries reported for motorcyclists and bicyclists include head and other bodily injuries.



CHILD PASSENGERS AND SAFETY EQUIPMENT

Does not include passengers of bicycles, motorcycles, buses, or all-terrain vehicles.



TABLE 2

CHILD RESTRAINT DEVICE AND SAFETY BELT USE BY AGE

CHILD RESTRAINT USE	Age Group	No Injury	%	Injury	%	Fatal	%	% Total	TOTAL	
With Restraint	<4	7,777	74.93	2,587	24.93	15	0.14	100	10,379	Sixty-six percent of fatalities in the 6 to 17 year age group were without seatbelts.
	4 to 5	3,530	72.62	1,326	27.28	5	0.10	100	4,861	
	6 to 17	22,635	66.95	11,140	32.95	36	0.11	100	33,811	
Without Restraint	<4	605	61.48	370	37.60	9	0.91	100	984	
	4 to 5	402	64.32	219	35.04	4	0.64	100	625	
	6 to 17	8,283	68.89	3,671	30.53	69	0.57	100	12,023	

TABLE 2 shows that 75 percent of children under 4 years of age avoided injuries during traffic crashes because they were properly restrained, compared to 61 percent who were without restraints. Similarly, 73 percent of children within the 4 to 5 age groups escaped injury compared to 64 percent without child restraints. The fatal injury for children under 4 years of age without restraints was 6.5 times higher than the under 4 years of age with restraints. Similarly, the fatal injury for children in the 4 to 5 age group without safety restraints was 6.4 times higher than the same age group with safety restraints.

TABLE 3

CHILD PASSENGERS INJURED OR KILLED 1993 THROUGH 2002

AGE GROUP BY INJURY LEVEL

YEAR	Injury						Fatal						TOTAL
	<4	%	4 to 5	%	6 to 17	%	<4	%	4 to 5	%	6 to 17	%	
1993	2,685	9.95	1,975	9.63	16,628	9.12	24	13.79	8	7.92	88	8.16	19,345
1994	2,735	10.13	2,173	10.60	18,139	9.95	21	12.07	16	15.84	118	10.94	20,911
1995	2,652	9.82	2,238	10.92	18,785	10.31	13	7.47	14	13.86	108	10.01	21,464
1996	2,730	10.11	2,300	11.22	19,216	10.54	19	10.92	9	8.91	109	10.10	21,974
1997	2,740	10.15	2,215	10.81	19,610	10.76	12	6.90	9	8.91	104	9.64	22,371
1998	2,572	9.53	2,186	10.66	19,791	10.86	19	10.92	12	11.88	97	8.99	22,394
1999	2,554	9.46	2,003	9.77	19,565	10.73	15	8.62	9	8.91	120	11.12	22,143
2000	2,642	9.79	1,939	9.46	17,684	9.70	15	8.62	8	7.92	121	11.21	20,349
2001	2,731	10.12	1,925	9.39	18,035	9.89	12	6.90	7	6.93	109	10.10	20,785
2002	2,957	10.95	1,545	7.54	14,811	8.13	24	13.79	9	8.91	105	9.73	17,801
TOTAL	26,998	100	20,499	100	182,264	100	174	100	101	100	1,079	100	209,537

AGE OF DRIVERS IN CRASHES

Does not include drivers of bicycles, mopeds, ATVs, or trains in all crashes and in fatal crashes categories on both tables.



TABLE 4

Crash Rates for Florida Resident DRIVERS IN ALL CRASHES BY AGE GROUPS

AGE GROUPS	Drivers Licenses Issued	Drivers in All Crashes	Rate Per 10,000 Licensed Drivers	Drivers in Fatal Crashes	Rate Per 10,000 Licensed Drivers
Under 15	0	528		6	
15-24	1,925,466	85,132	442.14	895	4.65
25-34	2,698,073	74,665	276.73	821	3.04
35-44	2,946,968	71,876	243.90	841	2.85
45-54	2,497,147	51,206	205.06	557	2.23
55-64	1,858,004	29,528	158.92	331	1.78
65-74	1,396,268	17,220	123.33	228	1.63
75-84	1,001,499	10,714	106.98	223	2.23
85+	281,295	2,625	93.32	82	2.92
Not Stated	0	4,950		29	
TOTAL	14,604,720	348,444		4,013	

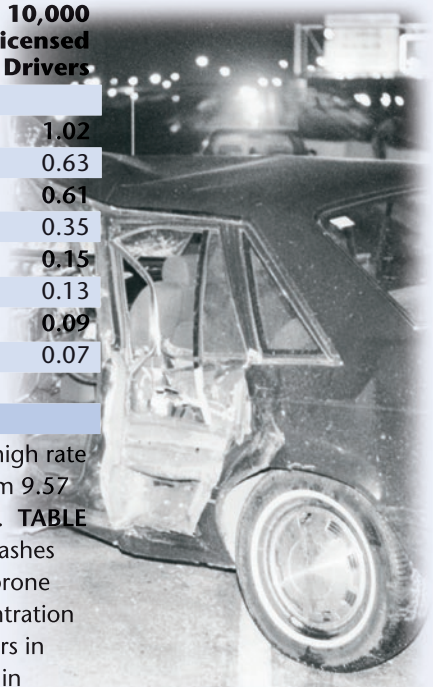
TABLE 4 shows the 15-34 years of age group with the highest rate of involvement in crashes, ranging from 277 per 10,000 licensed drivers to 442, with young drivers under age 25 having the highest rate of crash involvement. For the 35-44 age group, the rate drops below 245 per 10,000 licensed drivers and the 65-74 years of age group has a rate of 123 per 10,000 licensed drivers compared to 107 for age group 75-84. The rate for age 85 and over is 93 per 10,000 licensed drivers, which is just below the age group (65-84). Although older drivers perform the least amount of driving, compared to young drivers, reduced vision, slowed reaction, and restricted physical movement contribute to the increase in crash rates for this age group.

TABLE 5

Crash Rates for Florida Resident DRINKING DRIVERS IN ALL CRASHES BY AGE GROUPS

AGE GROUPS	Driver Licenses Issued	Drinking Drivers in All Crashes	Rate Per 10,000 Licensed Drivers	Drinking Drivers in Fatal Crashes	Rate Per 10,000 Licensed Drivers
Under 15	0	8		0	
15-24	1,925,466	3,860	20.05	197	1.02
25-34	2,698,073	3,845	14.25	171	0.63
35-44	2,946,968	3,927	13.33	180	0.61
45-54	2,497,147	2,389	9.57	87	0.35
55-64	1,858,004	896	4.82	28	0.15
65-74	1,396,268	347	2.49	18	0.13
75-84	1,001,499	119	1.19	9	0.09
85+	281,295	19	0.68	2	0.07
Not Stated	0	202		3	
TOTAL	14,604,720	15,612		695	

In TABLE 5, the 15-44 age group distinguishes itself from other age groups by a relatively high rate of alcohol involvement in crashes. The rates for alcohol involvement drops dramatically from 9.57 per 10,000 licensed drivers for the 45-54 age group to 0.68 for the 85 and over age group. TABLE 5 further illustrates that young drivers under the age of 25 have the highest rates of fatal crashes involving alcohol. This can be attributed to excessive driving during high-risk and alcohol-prone night hours. Young drivers have a relatively low level of driving experience, and any concentration of alcohol can significantly affect their driving performance. A comparison of drinking drivers in fatal crashes shows that drivers under 45 years of age have the highest rate of involvement in alcohol-related fatalities.



SELECTED AGE GROUP

Does not include drivers of bicycles, mopeds, ATVs, or trains in "all crashes" and in "fatal crashes" categories on both tables.

TABLE 6

**Crash Rates for Florida Resident DRIVERS
IN ALL CRASHES FOR A SELECTED AGE GROUP (15 - 29)**

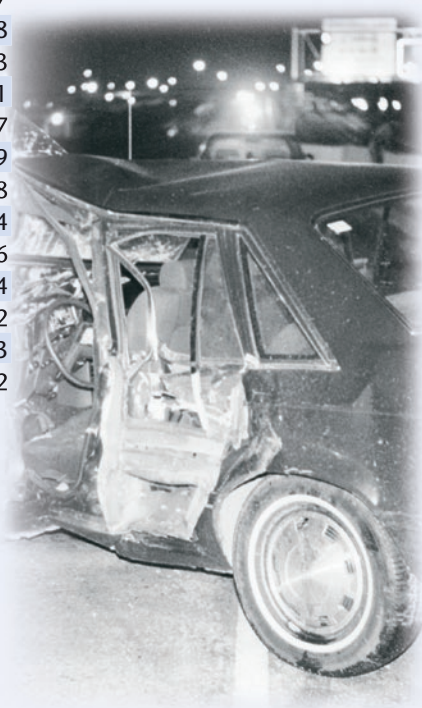
AGE OF DRIVER	Driver Licenses Issued	Drivers in All Crashes	Rate Per 10,000 Licensed Drivers	Drivers in Fatal Crashes	Rate Per 10,000 Licensed Drivers
Under 15		528		6	
15	74,444	713	95.78	9	1.21
16	128,274	5,799	452.08	68	5.30
17	157,058	8,974	571.38	83	5.28
18	180,582	11,448	633.95	87	4.82
19	201,124	11,364	565.02	127	6.31
20	219,401	10,391	473.61	105	4.79
21	230,806	10,081	436.77	121	5.24
22	244,170	9,379	384.12	104	4.26
23	244,655	8,699	355.56	107	4.37
24	244,952	8,284	338.19	90	3.67
25	256,393	7,985	311.44	87	3.39
26	253,111	7,666	302.87	81	3.20
27	254,283	7,490	294.55	84	3.30
28	260,917	7,145	273.84	60	2.30
29	259,351	7,291	281.12	99	3.82

TABLE 6A

**Crash Rates for Florida Resident DRIVERS
IN ALL CRASHES FOR A SELECTED AGE GROUP (70 - 85+)**

AGE OF DRIVER	Driver Licenses Issued	Drivers in All Crashes	Rate Per 10,000 Licensed Drivers	Drivers in Fatal Crashes	Rate Per 10,000 Licensed Drivers
70	138,947	1,704	122.64	25	1.80
71	134,649	1,635	121.43	28	2.08
72	139,043	1,598	114.93	29	2.09
73	131,846	1,516	114.98	22	1.67
74	132,803	1,545	116.34	17	1.28
75	129,027	1,388	107.57	21	1.63
76	123,068	1,322	107.42	21	1.71
77	117,416	1,337	113.87	22	1.87
78	114,607	1,259	109.85	32	2.79
79	104,990	1,134	108.01	26	2.48
80	98,605	1,068	108.31	27	2.74
81	93,904	970	103.30	25	2.66
82	83,958	857	102.07	18	2.14
83	70,190	770	109.70	17	2.42
84	65,734	609	92.65	14	2.13
85+	281,295	2,625	93.32	82	2.92

TABLES 6 and 6A illustrate the distribution of motor vehicle crash and fatality involvement for the 29 and under age group and for the 70 and above age group without alcohol involvement. The data in TABLE 6 supports the findings of TABLE 4 in which those drivers under 25 had the highest rates of crashes. Similarly, fatality rates for drivers under 25 in TABLE 6 closely resemble the rates cited for drivers under 25 in TABLE 4. Age group 70-74 shows a relatively high rate of crashes (TABLE 6A). The crash rate for age group 75-82 tends to drop slightly and begins to rise at 83 but drops for 84 and above.



SELECTED AGE GROUP

Does not include drivers of bicycles, mopeds, ATVs, or trains in "all crashes" and in "fatal crashes" categories on both tables.

TABLE 7

Crash Rates for Florida Resident DRINKING DRIVERS IN ALL CRASHES FOR A SELECTED AGE GROUP (15 - 29)

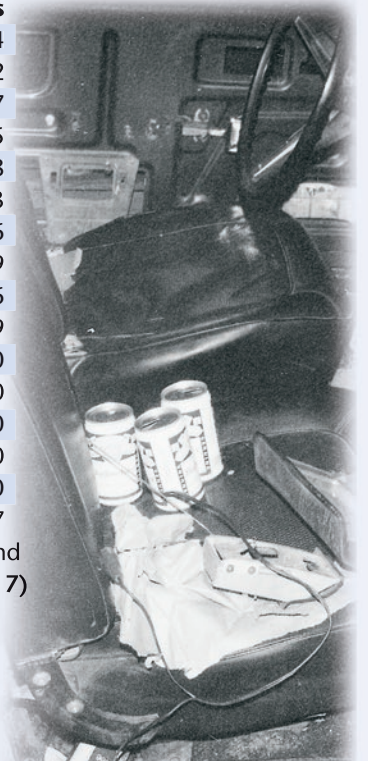
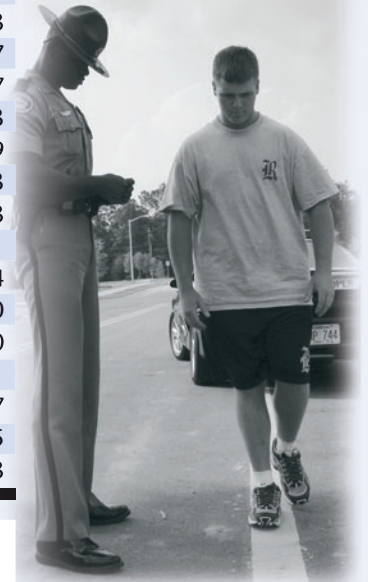
AGE OF DRIVER	Driver Licenses Issued	Drinking Drivers in All Crashes	Rate Per 10,000 Licensed Drivers	Drinking Drivers in Fatal Crashes	Rate Per 10,000 Licensed Drivers
Under 15		8		0	
15	74,444	10	1.34	1	0.13
16	128,274	84	6.55	6	0.47
17	157,058	172	10.95	9	0.57
18	180,582	359	19.88	15	0.83
19	201,124	441	21.93	24	1.19
20	219,401	520	23.70	27	1.23
21	230,806	652	28.25	33	1.43
22	244,170	612	25.06	27	1.11
23	244,655	488	19.95	28	1.14
24	244,952	522	21.31	27	1.10
25	256,393	488	19.03	18	0.70
26	253,111	397	15.68	18	0.71
27	254,283	427	16.79	22	0.87
28	260,917	350	13.41	17	0.65
29	259,351	353	13.61	19	0.73

TABLE 7A

Crash Rates for Florida Resident DRINKING DRIVERS IN ALL CRASHES FOR A SELECTED AGE GROUP (70 - 85+)

AGE OF DRIVER	Driver Licenses Issued	Drinking Drivers in All Crashes	Rate Per 10,000 Licensed Drivers	Drinking Drivers in Fatal Crashes	Rate Per 10,000 Licensed Drivers
70	138,947	34	2.45	2	0.14
71	134,649	33	2.45	3	0.22
72	139,043	23	1.65	1	0.07
73	131,846	20	1.52	2	0.15
74	132,803	28	2.11	1	0.08
75	129,027	20	1.55	3	0.23
76	123,068	27	2.19	2	0.16
77	117,416	16	1.36	1	0.09
78	114,607	12	1.05	3	0.26
79	104,990	13	1.24	2	0.19
80	98,605	15	1.52	1	0.10
81	93,904	8	0.85	0	0.00
82	83,958	1	0.12	0	0.00
83	70,190	3	0.43	0	0.00
84	65,734	4	0.61	0	0.00
85+	281,295	19	0.68	2	0.07

TABLE 7 and 7A provide data for involvement in motor vehicle crashes and fatalities for the 29 and under and the 70 and above age group with alcohol involvement. The age group 18-25 (TABLE 7) shows a relatively high rate of alcohol-related crash involvement; however, alcohol-related fatal crashes is more serious for the 19-24 age group. Compared to the age group under 30, the age group 70 and over (TABLE 7A) has a relatively low rate of alcohol-related crashes. With the exception of age groups 70-72, 74 and 76, the alcohol-related crash rates for the drivers are below 1.65 per 10,000 licensed drivers. Involvement in alcohol-related fatal crashes for the age group 70 and above remain below the rate of one per 10,000.



DRIVER PROFILE

TABLE 8

Drivers KILLED OR INJURED BY RESIDENCE AND GENDER*

RESIDENCE	Male		Female		Total Drivers Killed and Injured				ALL DRIVERS*
	Drivers Killed	Drivers Injured	Drivers Killed	Drivers Injured	Drivers Killed	% Killed	Drivers Injured	% Injured	
%	73.40	79.92	72.84	84.66					
County of Crash	1,054	64,851	346	60,703	1,400	73.18	125,566	82.11	301,726
%	19.78	15.28	20.42	12.43					
Elsewhere In State	284	12,396	97	8,910	381	19.92	21,307	13.93	52,984
%	5.43	4.02	5.26	2.54					
Non-Resident of State	78	3,259	25	1,824	103	5.38	5,083	3.32	14,563
%	0.28	0.45	0.42	0.23					
Foreign	4	364	2	164	6	0.31	528	0.35	1,805
%	1.11	0.33	1.05	0.15					
Not Stated	16	271	5	104	23	1.20	431	0.28	809
%	100	100	100	100					
TOTAL	1,436	81,141	475	71,705	1,913	100	152,915	100	371,887

*Drivers whose gender was not stated are included in the total column for all drivers.

Regarding gender and residence, a large percentage (73.2%) of drivers (male and female) killed in traffic crashes were from the county in which the crash occurred (TABLE 8). Those drivers elsewhere in the state ranked second (20%) behind those residing in the county. Only 5.4 percent of the drivers killed were non-residents of the state. Less than half of one percent of those killed in crashes were foreign drivers visiting Florida. The residences of 1.2 percent of drivers killed were unknown. Injuries followed similar distribution pattern of residence as those killed. In general, there was not much difference between males and females involved in fatal crashes. However, females had higher percentage of injury crashes (84.7% vs. 79.9%) in the categories of county of crash. Males had higher percentages of injury crashes in the categories of elsewhere in state and non-resident of state.

TABLE 9

Drivers INVOLVED IN CRASHES BY AGE GROUPS*

AGE	All Drivers	% All Drivers	Drivers Killed	% Drivers Killed	Drivers Injured	% Drivers Injured	% TOTAL
Under 15	1,200	0.32	9	0.47	900	0.59	1.38
15	964	0.26	8	0.42	513	0.34	1.01
16	6,075	1.63	19	0.99	2,368	1.55	4.18
17	9,298	2.50	36	1.88	3,792	2.48	6.86
18	11,906	3.20	48	2.51	4,833	3.16	8.87
19	11,905	3.20	45	2.35	4,830	3.16	8.71
20	10,965	2.95	52	2.72	4,526	2.96	8.63
21 - 24	38,449	10.34	185	9.67	16,016	10.47	30.48
25 - 34	78,703	21.16	324	16.94	31,503	20.60	58.70
35 - 44	76,152	20.48	389	20.33	30,542	19.97	60.78
45 - 54	54,699	14.71	260	13.59	22,638	14.80	43.10
55 - 64	31,985	8.60	167	8.73	13,210	8.64	25.97
65 - 74	18,896	5.08	133	6.95	7,892	5.16	17.19
75 - 84	11,526	3.10	138	7.21	5,106	3.34	13.65
85+	2,751	0.74	65	3.40	1,223	0.80	4.94
Not Stated	6,413	1.72	35	1.83	3,023	1.98	5.53
TOTAL	371,887	100	1,913	100	152,915	100	

*Includes bicycle drivers.

As shown in TABLE 9 drivers 75 years of age and above account for 3.84 percent of the total number of drivers in the state, but they constitute 10.61 percent of drivers killed in traffic crashes. Drivers age 16 through 20 are more likely to be injured than killed in traffic crashes. This age group accounts for 13.48 percent of the total number of drivers injured as compared to 10.45 percent of the drivers killed. While there is a sharp increase in fatalities for the age group 21-54, the injury level of this group remains consistently higher compared to their fatality level. The fatality level versus injury level reverses for those 55 years of age and above, i.e., this age group is more likely to be killed than injured in traffic crashes.

PERSONS IN CRASHES BY AGE AND GENDER

TABLE 10

Persons Involved In Crashes BY AGE AND GENDER PERSONS KILLED*

AGE GROUPS	Total Killed	DRIVERS			PASSENGERS			PEDESTRIANS			BICYCLISTS			MOTORCYCLISTS		
		Total	Male	Female	Total	Male	Female	Total	Male	Female	Total	Male	Female	Total	Male	Female
0 - 4	41	0	0	0	29	16	13	12	6	6	0	0	0	0	0	0
5 - 9	32	0	0	0	23	16	7	9	5	3	0	0	0	0	0	0
10 - 14	43	4	4	0	28	14	14	6	3	2	5	4	1	0	0	0
15	28	5	4	1	14	7	7	6	4	2	3	2	1	0	0	0
16	46	18	9	9	23	15	8	4	3	1	1	1	0	0	0	0
17	62	33	22	11	22	18	4	4	3	1	1	1	0	2	2	0
18	85	40	26	14	33	17	16	4	2	2	3	3	0	5	5	0
19	76	40	27	13	26	19	7	5	3	2	1	1	0	4	4	0
20	78	42	30	12	22	13	9	4	4	0	1	1	0	9	8	1
21 - 24	281	148	113	35	75	46	29	21	17	4	3	2	1	34	34	0
25 - 34	474	249	183	66	96	65	31	54	42	11	13	9	4	62	61	1
35 - 44	564	294	213	81	74	27	47	101	62	39	21	19	2	74	70	4
45 - 54	402	186	133	53	59	27	32	83	64	18	25	22	3	49	47	2
55 - 64	272	138	96	42	53	20	33	52	41	11	9	8	1	20	20	0
65 - 74	212	115	79	36	42	11	31	37	18	19	7	6	1	11	11	0
75 - 84	231	134	83	51	56	14	42	37	20	16	3	3	0	1	1	0
85+	111	64	42	22	29	12	17	17	10	7	0	0	0	1	1	0
Not Stated	105	21	15	4	42	21	21	28	23	5	12	9	3	2	2	0
TOTAL	3,143	1,531	1,079	450	746	378	368	484	330	149	108	91	17	274	266	8

TABLE 10 shows that males are disproportionately represented among motorcyclists (97%), bicyclists (84.3%), pedestrians (68.2%), and drivers (70.5%) killed in traffic crashes. Fatalities are equally distributed among male and female passengers. Of those killed in the above categories, a high proportion were above 20 years of age. A relatively high proportion of male motorcyclists (91.9%), bicyclists (79.5%), and pedestrians (59.5%) were among those injured in traffic crashes. However, injured drivers are equally distributed among male and female drivers. Again, the majority of motorcyclists, bicyclists, pedestrians, passengers, and drivers injured are above 20 years of age (TABLE 11).

TABLE 11

Persons Involved In Crashes BY AGE AND GENDER PERSONS INJURED*

AGE GROUPS	Total Injured	DRIVERS			PASSENGERS			PEDESTRIANS			BICYCLISTS			MOTORCYCLISTS		
		Total	Male	Female	Total	Male	Female	Total	Male	Female	Total	Male	Female	Total	Male	Female
0 - 4	4,030	1	0	0	3,744	1,888	1,856	283	174	109	2	1	1	0	0	0
5 - 9	4,768	2	2	0	4,284	2,053	2,231	473	308	164	9	6	3	0	0	0
10 - 14	7,124	334	234	100	5,583	2,514	3,069	655	382	272	523	432	91	29	26	3
15	2,405	333	202	131	1,704	676	1,028	188	108	80	160	138	22	20	18	2
16	4,536	2,192	1,041	1,151	1,987	797	1,190	181	94	86	148	122	26	28	23	5
17	6,152	3,605	1,756	1,849	2,227	993	1,234	133	76	56	123	104	19	64	59	5
18	7,114	4,629	2,320	2,309	2,137	926	1,211	144	76	68	101	78	23	103	95	8
19	6,892	4,607	2,299	2,308	1,922	863	1,059	141	90	51	111	86	25	111	103	8
20	6,385	4,274	2,117	2,157	1,723	829	894	136	72	64	94	70	24	158	149	9
21 - 24	21,768	15,074	7,477	7,596	5,310	2,512	2,798	442	277	164	287	227	60	655	612	43
25 - 34	40,374	29,609	14,839	14,766	7,938	3,497	4,441	933	586	344	592	459	133	1,302	1,217	85
35 - 44	38,012	28,477	14,200	14,276	6,292	2,384	3,908	1,177	728	445	837	650	187	1,229	1,100	129
45 - 54	28,355	21,000	10,537	10,461	4,788	1,568	3,220	929	576	347	631	522	109	1,007	905	102
55 - 64	17,064	12,453	6,488	5,964	3,309	843	2,466	545	307	236	326	271	55	431	407	24
65 - 74	10,905	7,604	4,169	3,434	2,605	634	1,971	408	206	199	177	147	30	111	107	4
75 - 84	7,317	5,020	2,686	2,334	1,842	454	1,388	369	182	186	63	52	11	23	23	0
85+	1,925	1,203	690	513	586	182	404	116	59	57	14	7	7	6	6	0
Not Stated	14,485	2,144	1,187	899	11,268	4,392	6,875	194	133	59	772	579	193	107	96	11
TOTAL	229,611	142,561	72,244	70,248	69,249	28,005	41,243	7,447	4,434	2,987	4,970	3,951	1,019	5,384	4,946	438

*Persons whose gender was not stated are included in the total columns for both tables.

MOTORCYCLISTS AND BICYCLISTS CRASH TRENDS

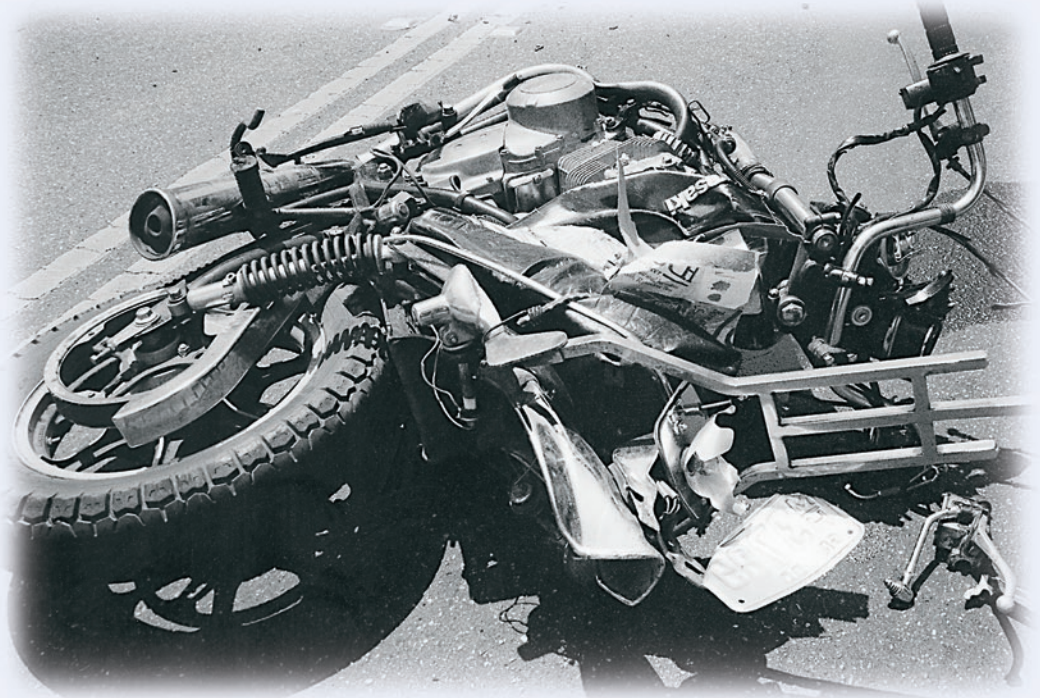
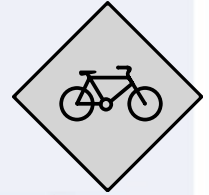


CHART 1

Motorcyclists and Bicyclists KILLED 1993 THROUGH 2002

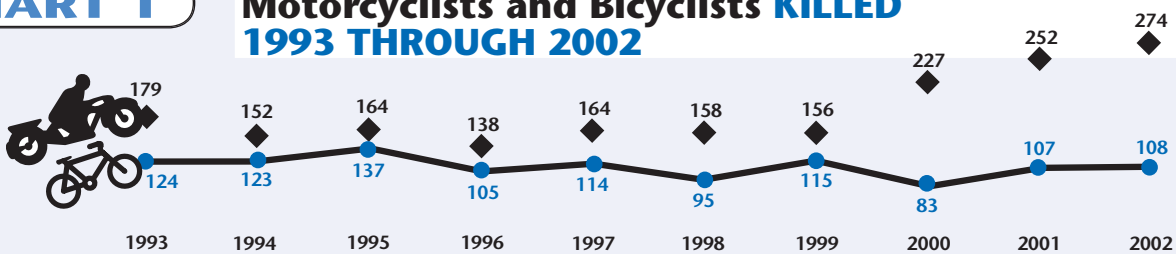
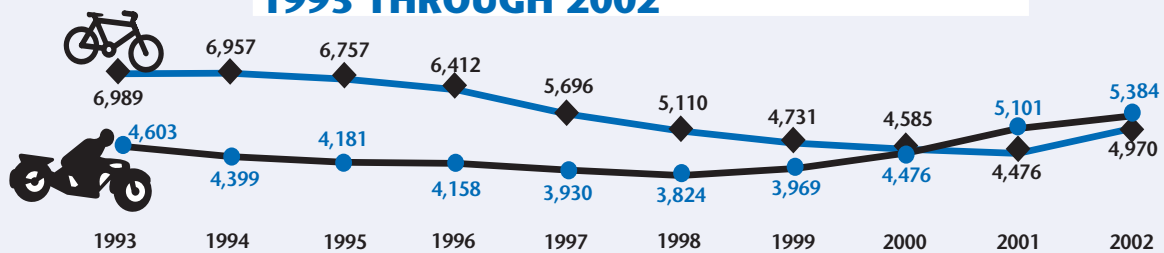


CHART 2

Motorcyclists and Bicyclists INJURED 1993 THROUGH 2002



PEDESTRIAN FATALITY TREND



CHART 3 Pedestrians **KILLED** 1993 THROUGH 2002

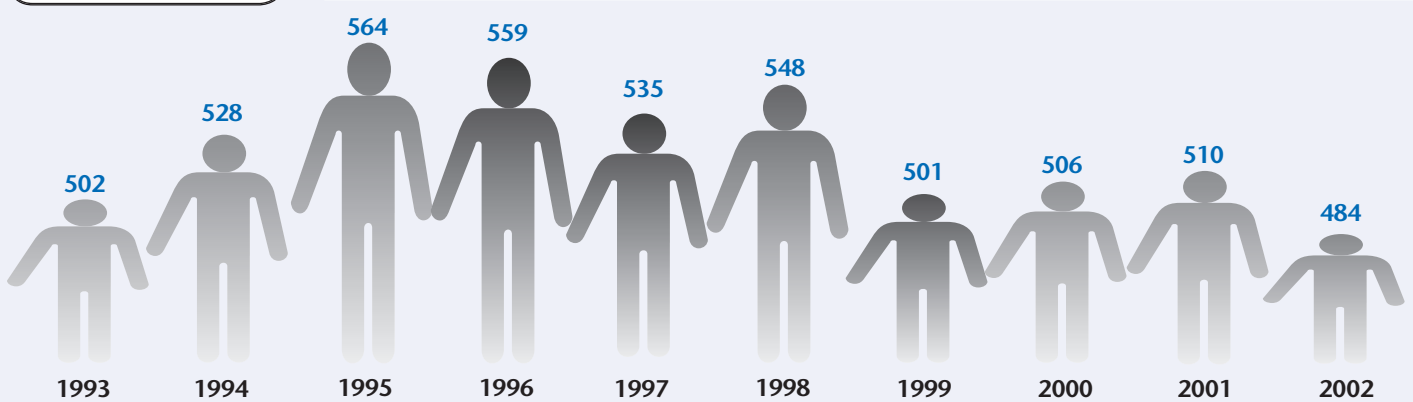
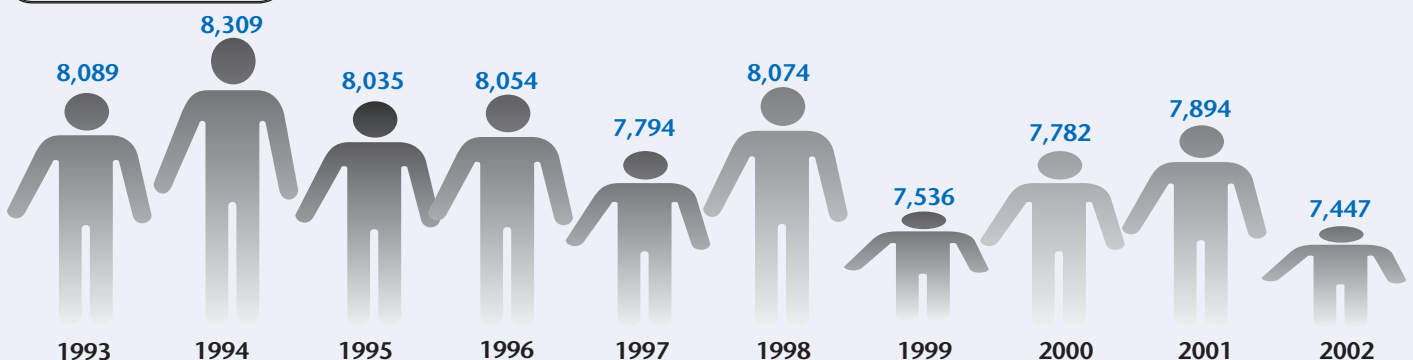


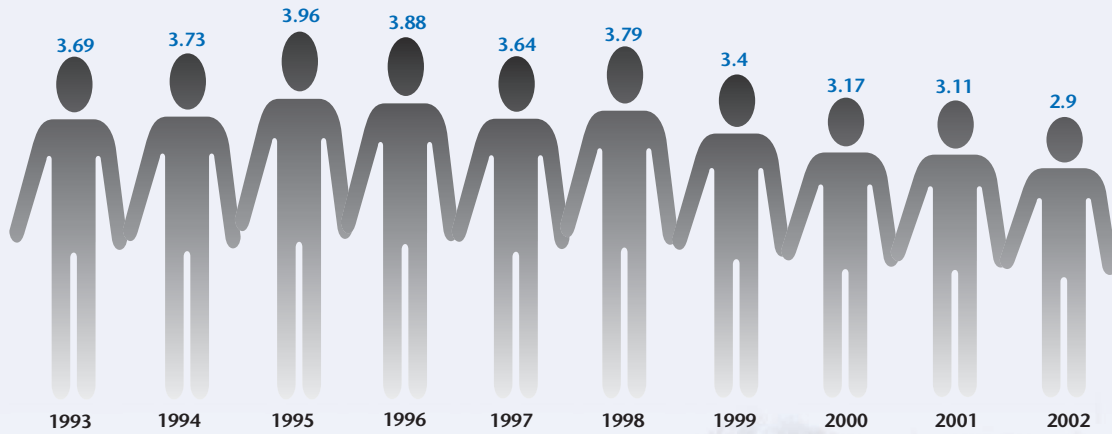
CHART 4 Pedestrians **INJURED** 1993 THROUGH 2002



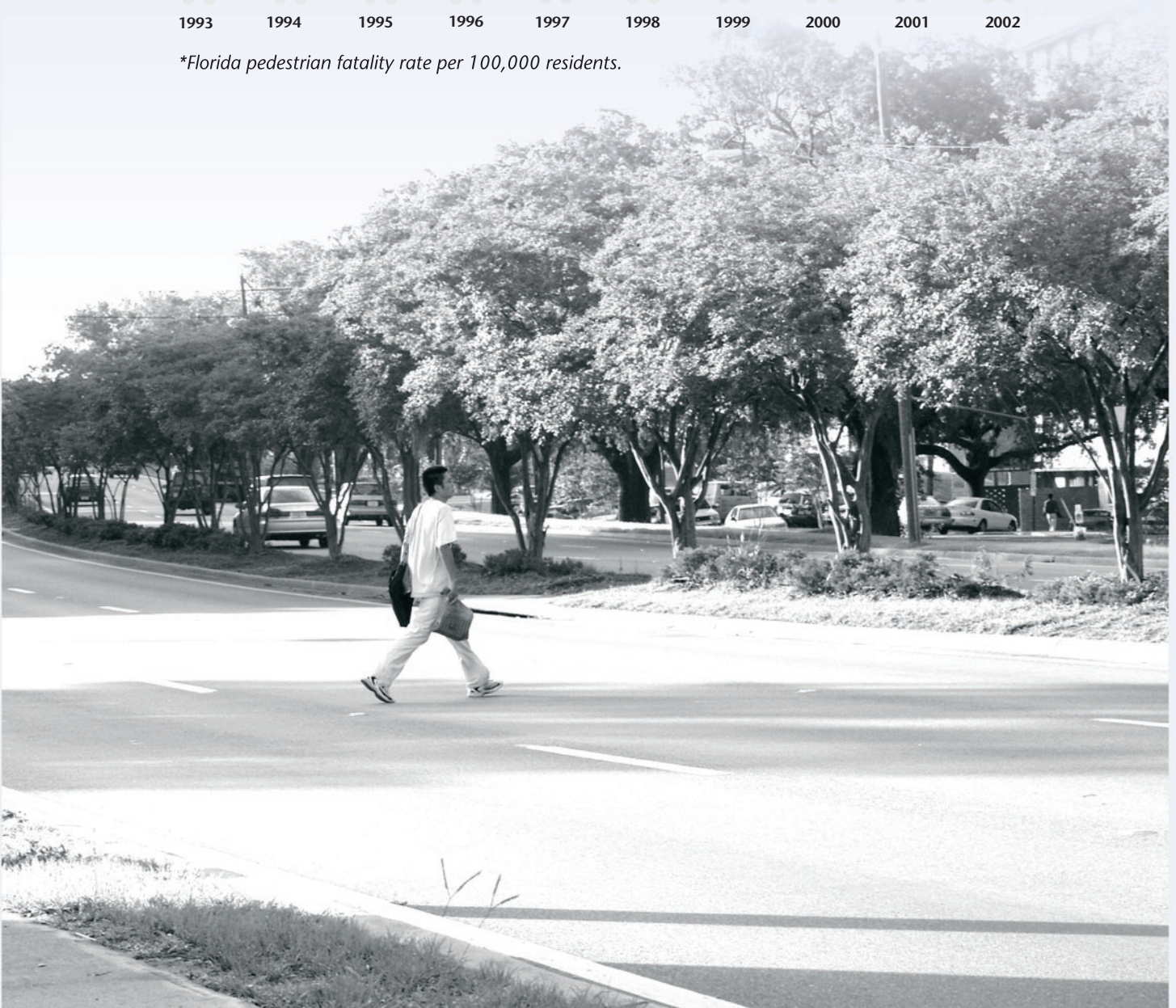
PEDESTRIAN FATALITY TREND

CHART 5

Pedestrian FATALITY RATE 1993 THROUGH 2002*



*Florida pedestrian fatality rate per 100,000 residents.



PEDESTRIAN BEHAVIOR



TABLE 12

PEDESTRIANS KILLED IN CRASHES By Age and Type of Actions*

AGE GROUP	PEDESTRIAN ACTIONS												Total Killed
	Cross Not at Intersection	%	Cross at Intersection	%	Walk Along Rd. With Traffic	%	Walk Along Rd. Against Traffic	%	Standing or Playing in Road	%	Other	%	
0 - 4	3	25.00	3	25.00	0	0.00	0	0.00	2	16.67	4	33.33	12
5 - 9	3	33.33	3	33.33	0	0.00	0	0.00	2	22.22	1	11.11	9
10 - 14	2	33.33	2	33.33	0	0.00	0	0.00	0	0.00	1	16.67	6
15 - 19	8	34.78	3	13.04	1	4.35	1	4.35	1	4.35	7	30.43	23
20 - 24	13	52.00	0	0.00	2	8.00	0	0.00	4	16.00	6	24.00	25
25 - 34	24	44.44	2	3.70	3	5.56	0	0.00	6	11.11	19	35.19	54
35 - 44	45	44.55	15	14.85	8	7.92	2	1.98	9	8.91	21	20.79	101
45 - 54	43	51.81	7	8.43	9	10.84	0	0.00	5	6.02	15	18.07	83
55 - 64	26	50.00	6	11.54	3	5.77	0	0.00	5	9.62	11	21.15	52
65 - 74	18	48.65	9	24.32	2	5.41	1	2.70	1	2.70	5	13.51	37
75 - 84	14	37.84	5	13.51	2	5.41	0	0.00	1	2.70	8	21.62	37
85+	10	58.82	3	17.65	0	0.00	0	0.00	0	0.00	4	23.53	17
Not Stated	14	50.00	3	10.71	3	10.71	0	0.00	2	7.14	5	17.86	28
TOTAL	223		61		33		4		38		107		484

TABLE 13

PEDESTRIANS INJURED IN CRASHES By Age and Type of Actions*

AGE GROUP	PEDESTRIAN ACTIONS												Total Injured
	Cross Not at Intersection	%	Cross at Intersection	%	Walk Along Rd. With Traffic	%	Walk Along Rd. Against Traffic	%	Standing or Playing in Road	%	Other	%	
0 - 4	72	25.44	22	7.77	4	1.41	2	0.71	48	16.96	133	47.00	283
5 - 9	204	43.13	44	9.30	8	1.69	3	0.63	64	13.53	145	30.66	473
10 - 14	235	35.88	129	19.69	44	6.72	18	2.75	57	8.70	162	24.73	655
15 - 19	218	27.70	113	14.36	61	7.75	24	3.05	58	7.37	304	38.63	787
20 - 24	147	25.43	85	14.71	34	5.88	15	2.60	34	5.88	249	43.08	578
25 - 34	212	22.72	132	14.15	68	7.29	28	3.00	45	4.82	433	46.41	933
35 - 44	300	25.49	173	14.70	72	6.12	32	2.72	55	4.67	523	44.44	1,177
45 - 54	239	25.73	155	16.68	50	5.38	18	1.94	32	3.44	422	45.43	929
55 - 64	134	24.59	114	20.92	24	4.40	8	1.47	14	2.57	245	44.95	545
65 - 74	108	26.47	95	23.28	16	3.92	11	2.70	6	1.47	167	40.93	408
75 - 84	92	24.93	74	20.05	11	2.98	7	1.90	12	3.25	172	46.61	369
85+	27	23.28	19	16.38	4	3.45	1	0.86	2	1.72	62	53.45	116
Not Stated	66	34.02	32	16.49	7	3.61	3	1.55	7	3.61	74	38.14	194
TOTAL	2,054		1,187		403		170		434		3,091		7,447

*Pedestrians whose actions were not stated are included in the total columns for both tables.

PEDESTRIAN BEHAVIOR

TABLE 14 PEDESTRIANS IN CRASHES BY AGE AND PERCENT DRINKING

AGE GROUP	Number Pedestrians	Number Drinking	% Drinking
0 - 4	310	0	0.00
5 - 9	505	2	0.40
10 - 14	713	3	0.42
15 - 19	879	32	3.64
20 - 24	647	75	11.59
25 - 29	511	46	9.00
30 - 34	554	69	12.45
35 - 39	667	121	18.14
40 - 44	718	121	16.85
45 - 49	599	98	16.36
50 - 54	476	58	12.18
55 - 59	349	43	12.32
60 - 64	289	18	6.23
65 - 69	227	15	6.61
70 - 74	241	7	2.90
75 - 79	228	6	2.63
80 - 84	189	2	1.06
85+	140	2	1.43
Unknown	284	31	10.92
TOTAL	8,526	749	8.78

TABLE 15 PEDESTRIANS IN CRASHES BY INJURY SEVERITY AND PERCENT DRINKING

INJURY SEVERITY	Number Pedestrians	Number Drinking	% Drinking
No Injury	371	26	7.01
Possible Injury	2,332	117	5.02
Non-Incapacitating Injury	3,159	214	6.77
Incapacitating Injury	1,956	236	12.07
Fatal Injury	484	151	31.20
Non-Traffic Fatality	12	2	16.67
Unknown	212	3	1.42
TOTAL	8,526	749	8.78



TRUCK PASSENGERS

Table 16

**PASSENGERS RIDING IN BEDS OF TRUCKS
By Age and Truck Type**

AGE GROUP	Light (Pickup) Trucks				All Types of Trucks			
	Killed	%	Injured	%	Killed	%	Injured	%
0-4	0	0	1	0	0	0	3	1
5-9	0	0	12	4	0	0	12	3
10-14	1	17	62	19	1	11	62	16
15-19	1	17	93	29	1	11	93	25
20-24	1	17	44	14	1	11	53	14
25-34	0	0	34	11	0	0	50	13
35-44	3	50	31	10	3	33	44	12
45-54	0	0	12	4	1	11	23	6
55-64	0	0	2	1	1	11	2	1
65-74	0	0	2	1	0	0	4	1
75-84	0	0	2	1	0	0	2	1
85+	0	0	0	0	0	0	1	0
Not Stated	0	0	23	7	1	11	29	8
TOTAL	6	100	318	100	9	100	378	100



CRASH CONDITIONS/CAUSAL FACTORS/ENVIRONMENT

TABLE 17

FLORIDA MOTORING ENVIRONMENT

YEAR	Licensed Drivers	Registered Vehicles ++	Vehicle Miles*	Crashes	Non-Fatal Injuries	Deaths	Mileage Death Rate**
1983	8,987,493	9,064,490	81,775	384,614	194,791	2,729	3.3
1984	9,442,763	9,444,964	85,241	237,511	202,889	2,856	3.4
1985	9,630,975	10,827,693	88,057	250,412	216,596	2,870	3.3
1986	9,924,110	11,651,253	87,325	242,381	219,352	2,874	3.3
1987	10,241,063	11,738,273	92,865	240,429	215,886	2,891	3.1
1988	10,648,019	11,997,948	105,030	256,543	230,738	3,152	3
1989	11,109,288	12,276,272	108,876	252,439	230,060	3,033	2.8
1990	11,612,402	12,465,790	109,997	216,245	214,208	2,951	2.7
1991	12,170,821	11,184,146+	113,484	195,312	195,122	2,523	2.2
1992	11,550,126	11,205,298	114,000	196,176	205,432	2,480	2.2
1993	11,767,409	11,159,938	119,768	199,039	212,497	2,719	2.3
1994	11,992,578	11,393,982	120,929	206,183	223,458	2,722	2.3
1995	12,019,156	11,557,811	127,800	228,589	233,900	2,847	2.2
1996	12,343,598	12,003,930	129,637	241,377	243,320	2,806	2.2
1997	12,691,835	12,170,375	133,276	240,639	240,001	2,811	2.1
1998	13,012,132	11,277,808	136,680	245,440	241,863	2,889	2.1
1999	13,398,895	11,611,993	140,868	243,409	232,225	2,920	2.1
2000	14,041,846	11,948,485	149,857	246,541	231,588	2,999	2
2001	14,346,373	13,448,202	171,029	256,169	234,600	3,013	1.8
2002	14,604,720	12,989,278	178,680	250,470	229,611	3,143	1.8

* IN MILLIONS (mileage data was provided by the Florida Department of Transportation)

** PER 100 MILLION VEHICLE MILES OF TRAVEL

+ DECREASE REFLECTS CHANGE IN ACCOUNTING METHOD





++ BEGINNING IN YEAR 1998 DOES NOT INCLUDE COUNT OF TRAILERS WITH TAGS

NOTE: All 1992 data in this publication has been updated from preliminary figures published in the Department of Highway and Safety Motor Vehicles Traffic Crash Data, 1992. Figures from the 1992 publication should not be used for year-to-year comparisons.



HOLIDAY TRAFFIC FATALITIES

TABLE 18 HOLIDAY PERIOD

		1998	1999	2000	2001	2002
 NEW YEAR	Hours	48	96	72	96	96
	Fatalities	16	31	25	30	33
	Rate*	0.33	0.32	0.35	0.31	0.34
	Alcohol Related Fatalities	11	13	12	10	7
MEMORIAL DAY	Hours	96	96	96	96	96
	Fatalities	37	25	43	45	30
	Rate*	0.39	0.26	0.45	0.47	0.31
	Alcohol Related Fatalities	17	11	15	20	8
 INDEPENDENCE DAY	Hours	72	96	120	48	48
	Fatalities	19	31	36	20	7
	Rate*	0.26	0.32	0.30	0.42	0.15
	Alcohol Related Fatalities	6	11	10	12	4
LABOR DAY	Hours	96	96	96	96	96
	Fatalities	37	26	32	22	42
	Rate*	0.39	0.27	0.33	0.23	0.44
	Alcohol Related Fatalities	12	10	13	8	18
 THANKSGIVING	Hours	120	120	120	120	120
	Fatalities	36	41	39	36	49
	Rate*	0.3	0.34	0.33	0.30	0.41
	Alcohol Related Fatalities	16	11	14	17	22
 CHRISTMAS	Hours	96	72	96	96	48
	Fatalities	40	28	38	42	19
	Rate*	0.42	0.39	0.40	0.44	0.40
	Alcohol Related Fatalities	19	12	11	14	3
ALL DAYS IN YEAR	Hours	8,760	8,760	8,784	8,760	8,760
	Fatalities	2,889	2,920	2,999	3,013	3,143
	Rate*	0.33	0.33	0.34	0.34	0.36
	Alcohol Related Fatalities	862	936	979	1,000	1,007

* Fatalities per hour

TRAFFIC CRASHES BY MONTH



CHART 6

All Crashes BY MONTH

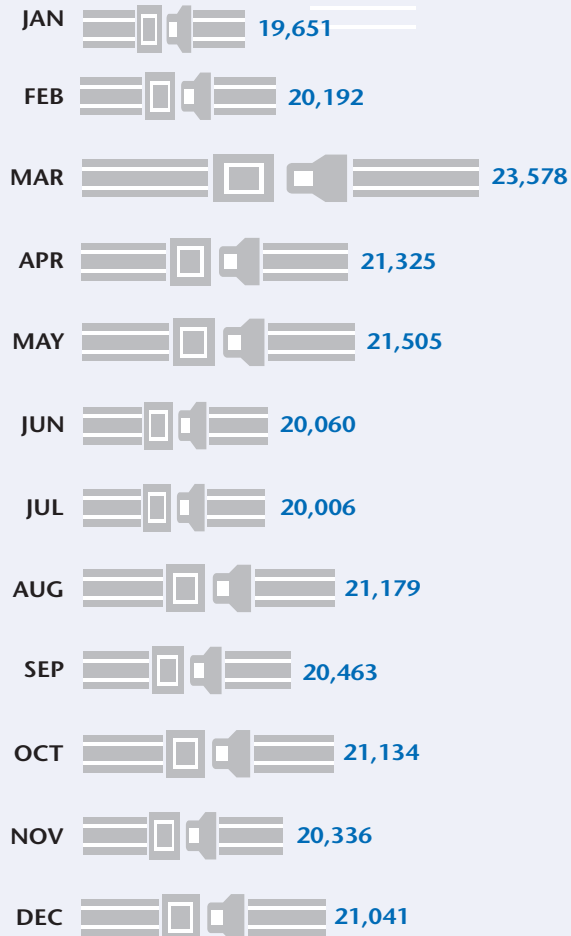
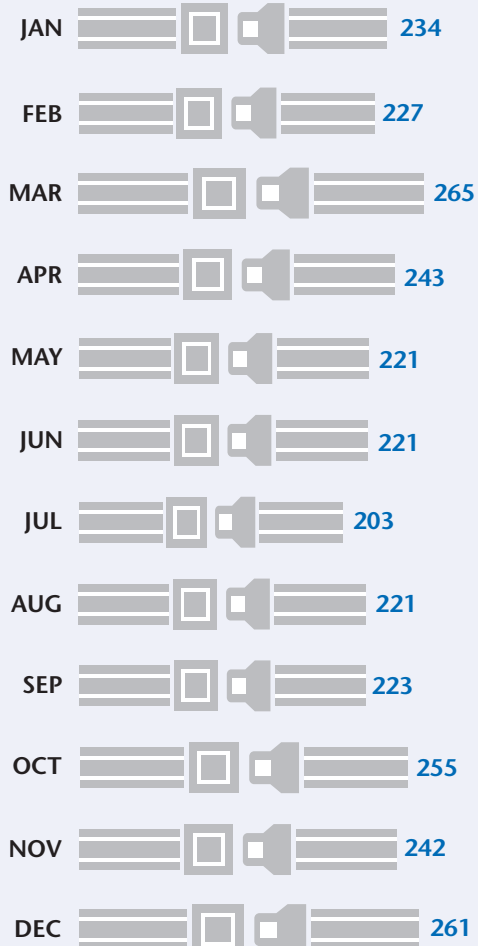


CHART 7

Fatal Crashes BY MONTH



TRAFFIC CRASHES BY DAY OF WEEK/TIME OF DAY

TABLE 19 MOTOR VEHICLE CRASHES BY DAY OF WEEK AND TIME OF DAY

TIME OF CRASH HOUR BEGINNING	TOTAL		MONDAY		TUESDAY		WEDNESDAY		THURSDAY		FRIDAY		SATURDAY		SUNDAY	
	All	Fatal	All	Fatal	All	Fatal	All	Fatal	All	Fatal	All	Fatal	All	Fatal	All	Fatal
Midnight	6,141	129	652	15	617	13	580	7	602	14	782	20	1,513	30	1,395	30
1:00	5,228	107	525	8	475	7	456	6	528	7	639	18	1,297	30	1,308	31
2:00	5,261	123	443	12	362	8	501	10	519	12	722	13	1,389	27	1,325	41
3:00	3,827	78	364	7	296	8	297	5	340	8	507	13	977	19	1,046	18
4:00	2,938	77	317	12	226	6	273	6	292	11	331	9	753	16	746	17
5:00	3,074	87	358	16	316	14	350	8	347	9	451	13	669	14	583	13
BEFORE NOON	5,366	91	844	18	851	10	905	10	883	15	848	13	580	16	455	9
7:00	9,846	61	1,716	5	1,829	9	1,688	9	1,654	15	1,659	8	750	8	550	7
8:00	10,404	67	1,710	8	1,803	6	1,858	11	1,726	10	1,745	12	925	14	637	6
9:00	8,877	85	1,385	13	1,433	9	1,359	11	1,394	13	1,461	11	1,124	20	721	8
10:00	9,702	97	1,474	11	1,438	12	1,387	11	1,376	19	1,577	14	1,448	19	1,002	11
11:00	11,488	94	1,805	11	1,710	23	1,641	9	1,534	13	1,858	11	1,750	16	1,190	11
NOON	13,810	106	2,131	13	2,036	10	1,927	14	1,999	14	2,200	17	2,044	18	1,473	20
1:00	14,085	107	2,115	13	1,974	15	2,045	17	2,004	13	2,316	18	2,086	19	1,545	12
2:00	15,708	141	2,369	24	2,377	22	2,307	28	2,207	20	2,747	19	2,134	10	1,567	18
3:00	17,851	129	2,747	13	2,826	16	2,637	26	2,648	24	3,174	16	2,119	17	1,700	17
4:00	18,371	119	2,894	19	2,830	19	2,715	16	2,722	18	3,285	15	2,114	14	1,811	18
AFTER NOON	18,931	148	2,906	24	3,012	21	2,932	24	2,884	19	3,361	21	2,102	22	1,734	17
6:00	15,558	175	2,190	21	2,247	16	2,333	28	2,261	38	2,658	28	2,098	21	1,771	23
7:00	12,304	159	1,588	20	1,693	18	1,686	20	1,626	31	2,078	29	1,960	20	1,673	21
8:00	10,393	154	1,317	17	1,345	22	1,364	15	1,425	14	1,786	23	1,687	33	1,469	30
9:00	9,822	164	1,129	7	1,284	17	1,304	30	1,287	14	1,844	37	1,629	37	1,345	22
10:00	8,567	140	901	13	1,015	22	1,038	17	1,176	20	1,745	28	1,574	23	1,118	17
11:00	7,273	142	751	17	783	21	781	16	957	20	1,602	25	1,555	26	844	17
Not Stated	5,645	36	772	2	780	7	731	0	739	0	862	5	937	7	824	15
TOTAL	250,470	2,816	35,403	339	35,558	351	35,095	354	35,130	391	42,238	436	37,214	496	29,832	449

CONTRIBUTING CAUSES

This table lists contributing causes reported by the investigating officer for drivers in traffic crashes. There can be up to three contributing causes per driver.

TABLE 20 **ACTIONS ATTRIBUTED TO DRIVERS Involved in Fatal, Injury or Property Damage Only Crashes**

DRIVER ACTIONS												
TYPE OF CRASHES	Failed/		Disregard Stop Sign	Disregard Traffic Signal	Drove Left of Center	Follow Too Closely	Alcohol Under Influence	Careless Driving	Mechanical Defect	Driver Distraction	Other	TOTAL
	Speed Too Fast	Yield Right-of-Way										
Fatal	498	471	72	99	139	9	410	799	37	23	815	3,372
% of Fatal Crashes	6.44	1.28	2.11	1.13	8.77	0.11	4.59	1.17	1.80	1.21	1.74	
Injury	5,723	29,574	2,687	7,149	1,147	6,025	4,460	52,324	1,434	1,478	34,187	146,188
% of Injury Crashes	74.02	80.17	78.91	81.31	72.37	76.47	49.92	76.40	69.71	77.50	72.89	
Property Damage Only Crashes	1,511	6,843	646	1,544	299	1,845	4,064	15,363	586	406	11,898	45,005
% of Property Damage Only Crashes	19.54	18.55	18.97	17.56	18.86	23.42	45.49	22.43	28.49	21.29	25.37	
TOTAL	7,732	36,888	3,405	8,792	1,585	7,879	8,934	68,486	2,057	1,907	46,900	194,565
% Total	100	100	100	100	100	100	100	100	100	100	100	



ENVIRONMENTAL CAUSES



TABLE 21

LIGHTING CONDITIONS at the Time of Crash

LIGHTING CONDITIONS	All Crashes	Fatal Crashes	Injury Crashes	Property Damage Only Crashes
Daylight	161,380	1,233	99,392	60,755
Dusk	6,985	81	3,982	2,922
Dawn	3,251	53	1,875	1,323
Darkness	74,955	1,428	37,015	36,512
Unknown	3,899	21	728	3,150
TOTAL	250,470	2,816	142,992	104,662

TABLE 22

ROAD SURFACE CONDITIONS at the Time of Crash

SURFACE CONDITIONS	All Crashes	Fatal Crashes	Injury Crashes	Property Damage Only Crashes
Dry	209,108	2,444	119,327	87,337
Wet	36,466	349	21,647	14,470
Slippery	1,630	11	1,060	559
Icy	57	0	28	29
Other	3,209	12	930	2,267
TOTAL	250,470	2,816	142,992	104,662

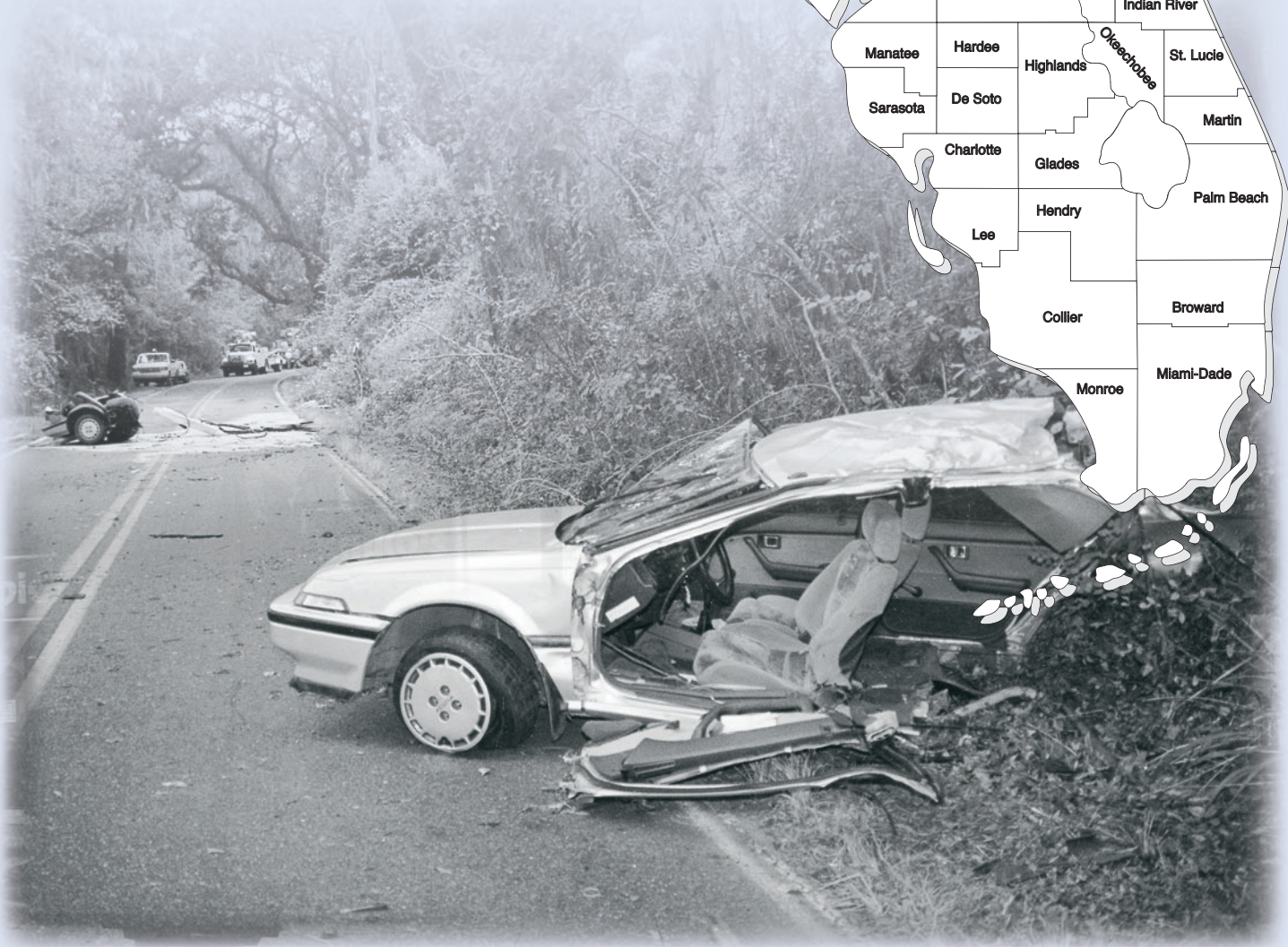
TABLE 23

VEHICLE HARMFUL EVENTS

	Fatal Crashes	%	Injury Crashes	%	Property Damage Only Crashes	%
Collision With MV in Transport (<i>Rear-end</i>)	391	6.40	75,993	26.19	23,355	21.57
Collision With MV in Transport (<i>Head-on</i>)	438	7.17	7,102	2.45	1,901	1.76
Collision With MV in Transport (<i>Angle</i>)	1,093	17.89	51,747	17.83	16,605	15.34
Collision With MV in Transport (<i>Left Turn</i>)	194	3.18	14,371	4.95	4,035	3.73
Collision With MV in Transport (<i>Right Turn</i>)	8	0.13	1,450	0.50	727	0.67
Collision With MV in Transport (<i>Sideswipe</i>)	179	2.93	9,827	3.39	7,133	6.59
Collision With MV in Transport (<i>Backed Into</i>)	1	0.02	968	0.33	848	0.78
Collision With Parked Car	59	0.97	2,313	0.80	1,848	1.71
Collision With MV on Other Roadway	177	2.90	19,621	6.76	8,925	8.24
Collision With Pedestrian	426	6.97	5,462	1.88	94	0.09
Collision With Bicycle	104	1.70	4,305	1.48	275	0.25
Collision With Moped	10	0.16	445	0.15	42	0.04
Collision With Train	9	0.15	35	0.01	17	0.02
Collision With Animal	3	0.05	301	0.10	133	0.12
Collision With Fixed Object	1,064	17.42	23,583	8.13	10,321	9.53
Collision With Moveable Object On Road	30	0.49	868	0.30	884	0.82
Collision With Fixed Object Above Road	36	0.59	1,068	0.37	681	0.63
Ran Off Road Into Water	74	1.21	806	0.28	346	0.32
Overtuned	608	9.95	8,595	2.96	1,298	1.20
Median Crossover	59	0.97	599	0.21	221	0.20
All Other	1,145	18.75	60,712	20.92	28,564	26.39
TOTAL	6,108	100	290,171	100	108,253	100

* This table lists harmful events reported by the investigating officer for vehicles in traffic crashes. There can be up to four harmful events per vehicle.

COUNTY DATA



COUNTY DATA

TABLE 24 5-YEAR CRASH HISTORY By County

COUNTY	1998	1999	2000	2001	2002	COUNTY	1998	1999	2000	2001	2002
ALACHUA	4,281	3,874	3,818	4,007	4,140	LEON	5,862	5,886	5,619	5,704	6,091
BAKER	192	248	240	240	234	LEVY	409	402	388	412	407
BAY	2,306	1,979	1,916	1,996	2,296	LIBERTY	60	79	65	55	70
BRADFORD	261	223	220	353	306	MADISON	266	251	235	222	244
BREVARD	4,484	4,713	4,756	4,672	4,515	MANATEE	3,533	3,368	3,329	3,640	3,537
BROWARD	27,464	27,435	27,814	28,262	27,096	MARION	2,855	2,939	3,017	2,979	3,320
CALHOUN	105	110	116	113	105	MARTIN	1,544	1,436	1,370	1,637	1,725
CHARLOTTE	1,682	1,580	1,587	1,661	1,702	MIAMI-DADE	49,421	49,804	51,132	54,519	49,922
CITRUS	994	976	933	1,064	860	MONROE	1,275	1,363	1,396	1,608	1,649
CLAY	1,093	1,303	1,340	1,289	1,863	NASSAU	480	542	545	580	581
COLLIER	2,512	2,771	2,854	3,003	2,901	OKALOOSA	1,538	1,747	1,781	2,025	2,048
COLUMBIA	738	654	711	806	828	OKEECHOBEE	442	414	347	308	373
DE SOTO	344	304	320	356	295	ORANGE	16,668	16,604	15,840	16,003	14,918
DIXIE	135	126	134	129	143	OSCEOLA	2,353	2,272	2,064	2,304	2,081
DUVAL	13,332	13,664	14,389	14,852	15,099	PALM BEACH	14,466	14,387	15,079	15,731	14,906
ESCAMBIA	4,097	3,820	3,723	3,828	3,944	PASCO	4,147	4,104	3,946	3,806	3,956
FLAGLER	367	382	438	326	460	PINELLAS	13,192	13,196	13,867	14,776	14,019
FRANKLIN	126	98	94	103	126	POLK	7,697	7,220	6,525	6,553	6,606
GADSDEN	671	631	705	696	647	PUTNAM	1,005	1,039	1,027	998	918
GILCHRIST	103	127	105	152	146	ST. JOHNS	1,557	1,607	1,518	1,532	1,562
GLADES	132	90	129	142	112	ST. LUCIE	2,030	2,086	2,003	2,229	2,093
GULF	136	143	143	88	119	SANTA ROSA	1,232	1,114	1,070	1,157	1,184
HAMILTON	167	114	135	137	156	SARASOTA	4,588	4,229	3,698	3,687	3,724
HARDEE	303	256	306	330	297	SEMINOLE	3,655	3,284	3,314	3,188	2,980
HENDRY	377	364	313	303	332	SUMTER	537	561	495	509	528
HERNANDO	1,154	1,231	1,253	1,285	1,361	SUWANNEE	460	470	393	379	416
HIGHLANDS	620	583	578	699	732	TAYLOR	258	242	196	219	246
HILLSBOROUGH	19,286	18,091	20,192	20,604	21,609	UNION	93	88	77	116	90
HOLMES	146	133	125	143	126	VOLUSIA	6,307	6,468	6,448	6,621	6,570
INDIAN RIVER	1,147	1,233	1,358	1,479	1,435	WAKULLA	237	231	231	224	251
JACKSON	516	492	496	504	521	WALTON	504	500	493	519	516
JEFFERSON	175	163	206	188	162	WASHINGTON	228	196	202	204	188
LAFAYETTE	68	84	64	51	59	UNKNOWN	243	127	56	8	0
LAKE	2,093	2,239	2,256	2,331	2,390	STATEWIDE	245,440	243,409	246,541	256,169	250,470
LEE	4,691	4,919	5,008	5,525	5,634						

COUNTY DATA

TABLE 25 5-YEAR ALCOHOL-RELATED CRASH HISTORY By County

COUNTY	1998	1999	2000	2001	2002	COUNTY	1998	1999	2000	2001	2002
ALACHUA	393	385	397	381	355	LEON	510	518	515	555	469
BAKER	39	47	36	38	33	LEVY	63	77	75	73	47
BAY	367	368	386	363	371	LIBERTY	13	17	10	14	12
BRADFORD	48	42	41	48	27	MADISON	21	32	28	25	26
BREVARD	660	735	728	729	673	MANATEE	480	490	497	560	421
BROWARD	2,021	1,984	2,002	2,026	1,619	MARION	265	304	319	313	278
CALHOUN	24	30	28	32	20	MARTIN	224	238	236	237	247
CHARLOTTE	191	166	196	203	181	MIAMI-DADE	2,193	2,036	2,007	2,314	1,876
CITRUS	159	120	137	153	141	MONROE	244	211	260	264	244
CLAY	162	156	194	180	201	NASSAU	71	66	80	94	80
COLLIER	384	395	452	472	426	OKALOOSA	283	298	302	321	324
COLUMBIA	106	91	108	117	122	OKEECHOBEE	81	59	62	57	62
DE SOTO	46	34	49	58	37	ORANGE	1,407	1,366	1,444	1,382	1,052
DIXIE	39	32	35	28	23	OSCEOLA	222	222	190	244	194
DUVAL	1,155	1,101	1,311	1,298	1,177	PALM BEACH	1,315	1,298	1,354	1,439	1,283
ESCAMBIA	574	527	512	486	515	PASCO	430	446	480	506	483
FLAGLER	51	46	58	52	49	PINELLAS	1,416	1,486	1,604	1,802	1,560
FRANKLIN	25	18	20	27	38	POLK	855	707	672	660	577
GADSDEN	112	100	112	111	92	PUTNAM	149	149	162	160	109
GILCHRIST	19	22	12	31	23	ST. JOHNS	223	217	226	230	199
GLADES	17	13	19	22	17	ST. LUCIE	219	242	235	237	239
GULF	26	23	29	20	24	SANTA ROSA	171	138	135	142	143
HAMILTON	28	19	19	17	27	SARASOTA	545	511	536	565	478
HARDEE	39	26	30	28	26	SEMINOLE	385	348	404	373	321
HENDRY	62	56	46	47	52	SUMTER	71	78	63	64	56
HERNANDO	174	168	182	186	183	SUWANNEE	65	56	76	62	55
HIGHLANDS	73	59	76	81	86	TAYLOR	28	37	35	36	43
HILLSBOROUGH	1,746	1,705	2,073	2,112	1,939	UNION	15	12	14	22	12
HOLMES	29	24	20	27	24	VOLUSIA	664	743	803	792	736
INDIAN RIVER	127	138	158	163	144	WAKULLA	43	57	64	62	58
JACKSON	66	58	78	66	82	WALTON	128	98	111	69	85
JEFFERSON	19	14	24	23	28	WASHINGTON	41	39	27	29	31
LAFAYETTE	17	17	18	6	11	UNKNOWN	20	7	3	0	0
LAKE	269	245	272	271	281	STATEWIDE	22,741	22,252	23,578	24,411	21,533
LEE	614	685	691	806	686						

COUNTY DATA

TABLE 26 5-YEAR FATALITY HISTORY By County

COUNTY	1998	1999	2000	2001	2002	COUNTY	1998	1999	2000	2001	2002
ALACHUA	52	48	44	50	35	LEON	19	16	45	25	27
BAKER	6	10	8	6	13	LEVY	10	16	21	16	13
BAY	34	28	25	34	26	LIBERTY	1	1	1	1	2
BRADFORD	16	3	13	7	7	MADISON	12	10	13	11	10
BREVARD	69	81	76	79	113	MANATEE	65	58	59	59	43
BROWARD	231	214	221	199	184	MARION	59	74	80	86	82
CALHOUN	5	1	10	6	1	MARTIN	17	26	38	23	32
CHARLOTTE	18	31	39	20	24	MIAMI-DADE	300	316	302	313	353
CITRUS	36	26	27	21	33	MONROE	27	25	21	23	19
CLAY	23	16	19	18	20	NASSAU	28	18	14	20	11
COLLIER	52	60	67	66	64	OKALOOSA	25	16	21	29	36
COLUMBIA	18	18	23	21	29	OKEECHOBEE	15	7	10	16	12
DE SOTO	4	14	21	10	13	ORANGE	180	153	153	169	164
DIXIE	6	3	4	7	4	OSCEOLA	55	50	55	52	74
DUVAL	101	116	106	119	118	PALM BEACH	177	189	173	197	198
ESCAMBIA	54	38	42	47	45	PASCO	71	79	81	102	97
FLAGLER	17	16	18	16	16	PINELLAS	124	116	122	100	119
FRANKLIN	3	1	4	2	5	POLK	108	123	125	111	127
GADSDEN	18	21	13	23	13	PUTNAM	21	19	33	24	27
GILCHRIST	4	6	5	3	6	ST. JOHNS	30	45	38	30	36
GLADES	8	8	11	9	8	ST. LUCIE	22	31	31	58	48
GULF	4	1	1	4	2	SANTA ROSA	16	15	15	15	21
HAMILTON	3	2	5	3	13	SARASOTA	51	35	57	41	48
HARDEE	10	14	10	19	9	SEMINOLE	39	40	38	44	33
HENDRY	15	14	11	19	16	SUMTER	20	33	17	19	27
HERNANDO	21	25	27	25	25	SUWANNEE	9	14	12	10	23
HIGHLANDS	28	30	23	21	35	TAYLOR	9	15	10	5	7
HILLSBOROUGH	208	197	199	177	223	UNION	2	3	2	3	4
HOLMES	8	7	8	7	10	VOLUSIA	86	86	80	96	112
INDIAN RIVER	25	22	20	32	28	WAKULLA	8	6	10	5	4
JACKSON	25	25	17	22	17	WALTON	16	16	17	15	17
JEFFERSON	7	12	12	9	11	WASHINGTON	10	12	11	18	7
LAFAYETTE	2	2	3	2	2	UNKNOWN	0	1	0	0	0
LAKE	50	47	59	61	71	STATEWIDE	2,889	2,920	2,999	3,013	3,143
LEE	76	99	103	113	71						

COUNTY DATA

TABLE 27 5-YEAR ALCOHOL-RELATED FATALITY HISTORY By County

COUNTY	1998	1999	2000	2001	2002	COUNTY	1998	1999	2000	2001	2002
ALACHUA	22	12	19	17	9	LEON	7	5	19	8	9
BAKER	2	6	2	5	4	LEVY	5	10	9	6	9
BAY	14	12	6	15	8	LIBERTY	0	0	0	1	1
BRADFORD	11	0	3	5	4	MADISON	2	3	5	7	3
BREVARD	25	34	21	31	35	MANATEE	17	23	15	27	12
BROWARD	44	62	35	52	29	MARION	19	28	37	38	33
CALHOUN	3	0	4	4	0	MARTIN	5	6	13	2	10
CHARLOTTE	2	11	14	7	4	MIAMI-DADE	60	59	51	70	84
CITRUS	10	5	7	7	7	MONROE	5	12	8	10	10
CLAY	11	6	8	4	5	NASSAU	6	8	5	7	4
COLLIER	12	13	13	17	16	OKALOOSA	9	9	5	6	14
COLUMBIA	6	5	6	9	8	OKEECHOBEE	8	4	4	4	6
DE SOTO	0	3	9	5	4	ORANGE	67	49	57	65	64
DIXIE	3	1	3	4	3	OSCEOLA	18	10	18	16	28
DUVAL	33	37	41	50	38	PALM BEACH	57	54	47	58	58
ESCAMBIA	19	18	24	24	17	PASCO	24	36	38	34	33
FLAGLER	7	4	7	7	8	PINELLAS	34	40	55	33	51
FRANKLIN	0	1	2	2	1	POLK	27	28	42	31	38
GADSDEN	7	12	8	10	5	PUTNAM	6	8	16	11	11
GILCHRIST	2	2	1	2	3	ST. JOHNS	11	13	8	5	17
GLADES	4	5	6	6	6	ST. LUCIE	11	6	9	16	14
GULF	1	1	1	3	1	SANTA ROSA	8	11	6	6	11
HAMILTON	2	2	1	0	2	SARASOTA	12	12	21	13	16
HARDEE	1	2	4	3	1	SEMINOLE	13	13	10	12	3
HENDRY	5	9	4	11	9	SUMTER	4	11	5	4	6
HERNANDO	2	8	9	3	3	SUWANNEE	1	7	6	6	5
HIGHLANDS	11	8	13	10	10	TAYLOR	2	8	4	1	2
HILLSBOROUGH	63	78	70	62	79	UNION	0	0	0	1	1
HOLMES	4	0	4	4	5	VOLUSIA	27	34	38	30	48
INDIAN RIVER	2	3	2	11	6	WAKULLA	5	3	7	3	1
JACKSON	8	6	7	7	7	WALTON	7	8	6	5	10
JEFFERSON	1	5	3	0	3	WASHINGTON	5	4	2	2	4
LAFAYETTE	2	2	1	2	0	UNKNOWN	0	0	0	0	0
LAKE	15	12	17	21	27	STATEWIDE	862	936	979	1,000	1,007
LEE	26	29	38	42	24						

COUNTY DATA

TABLE 28 5-YEAR INJURY HISTORY By County

COUNTY	1998	1999	2000	2001	2002	COUNTY	1998	1999	2000	2001	2002
ALACHUA	3,675	3,355	3,185	3,176	3,164	LEON	4,327	4,302	4,108	4,168	4,486
BAKER	248	259	238	265	266	LEVY	601	475	459	472	437
BAY	2,180	2,045	1,864	1,908	2,132	LIBERTY	73	99	76	70	91
BRADFORD	298	237	230	321	319	MADISON	253	301	258	261	275
BREVARD	5,062	4,986	5,101	4,850	4,787	MANATEE	3,697	3,465	3,027	3,120	3,090
BROWARD	26,474	25,936	25,608	25,530	24,887	MARION	3,604	3,543	3,966	3,636	3,738
CALHOUN	114	141	148	132	125	MARTIN	1,456	1,510	1,316	1,479	1,535
CHARLOTTE	1,627	1,516	1,459	1,502	1,474	MIAMI-DADE	42,526	40,641	40,714	43,954	41,699
CITRUS	1,025	1,124	1,052	1,086	911	MONROE	1,268	1,220	1,304	1,387	1,386
CLAY	1,195	1,239	1,190	1,208	1,494	NASSAU	520	601	522	567	585
COLLIER	2,441	2,638	2,620	2,722	2,575	OKALOOSA	1,565	1,760	1,679	1,799	1,923
COLUMBIA	887	797	845	888	1,034	OKEECHOBEE	417	452	404	354	421
DE SOTO	425	417	370	467	319	ORANGE	17,675	16,974	17,378	16,581	15,344
DIXIE	151	139	141	135	136	OSCEOLA	2,867	2,693	2,412	2,543	2,416
DUVAL	11,600	11,020	11,289	11,053	11,457	PALM BEACH	15,143	14,741	15,169	15,570	14,677
ESCAMBIA	4,462	4,227	4,196	4,388	4,440	PASCO	5,083	4,736	4,878	4,526	4,323
FLAGLER	427	426	559	440	634	PINELLAS	14,119	13,243	13,308	13,312	12,147
FRANKLIN	141	98	101	120	132	POLK	7,807	7,379	6,738	6,806	7,027
GADSDEN	759	716	731	650	700	PUTNAM	976	936	954	879	744
GILCHRIST	113	142	123	144	154	ST. JOHNS	1,596	1,624	1,631	1,555	1,569
GLADES	168	98	156	128	114	ST. LUCIE	2,177	2,176	1,979	2,279	2,143
GULF	142	157	155	86	129	SANTA ROSA	1,549	1,468	1,449	1,572	1,552
HAMILTON	166	175	161	167	151	SARASOTA	4,429	4,180	3,600	3,390	3,455
HARDEE	358	307	350	406	339	SEMINOLE	3,497	2,874	2,887	2,770	2,757
HENDRY	440	427	355	275	361	SUMTER	683	698	587	624	643
HERNANDO	1,525	1,526	1,614	1,597	1,692	SUWANNEE	447	445	464	434	455
HIGHLANDS	808	725	750	787	736	TAYLOR	240	244	207	221	225
HILLSBOROUGH	19,538	17,864	19,063	19,022	19,214	UNION	126	108	111	126	91
HOLMES	199	161	195	155	164	VOLUSIA	5,869	5,784	5,766	5,760	5,671
INDIAN RIVER	1,232	1,211	1,195	1,326	1,321	WAKULLA	323	294	275	259	274
JACKSON	709	649	664	614	543	WALTON	669	671	583	703	584
JEFFERSON	227	198	259	254	205	WASHINGTON	299	254	260	237	235
LAFAYETTE	71	75	65	53	62	UNKNOWN	185	99	51	7	0
LAKE	2,150	2,230	2,182	2,357	2,346	STATEWIDE	241,863	232,225	231,588	234,600	229,611
LEE	4,780	4,974	4,854	4,967	5,096						

COUNTY DATA

TABLE 29 5-YEAR ALCOHOL-RELATED INJURY HISTORY By County

COUNTY	1998	1999	2000	2001	2002	COUNTY	1998	1999	2000	2001	2002
ALACHUA	295	297	285	269	237	LEON	379	369	394	379	358
BAKER	40	48	45	47	26	LEVY	68	77	84	84	51
BAY	309	310	323	249	260	LIBERTY	12	13	9	17	16
BRADFORD	60	52	47	43	28	MADISON	16	33	27	29	11
BREVARD	584	586	606	562	525	MANATEE	416	446	417	387	320
BROWARD	1,723	1,640	1,573	1,713	1,350	MARION	253	291	351	324	281
CALHOUN	22	36	36	31	23	MARTIN	176	190	149	153	131
CHARLOTTE	168	145	192	180	127	MIAMI-DADE	1,913	1,727	1,709	2,040	1,530
CITRUS	144	109	134	164	126	MONROE	174	170	183	203	151
CLAY	171	116	135	132	128	NASSAU	60	56	70	84	67
COLLIER	285	290	351	370	285	OKALOOSA	208	206	206	203	251
COLUMBIA	89	94	102	116	117	OKEECHOBEE	76	66	50	59	58
DE SOTO	52	31	44	100	25	ORANGE	1,314	1,183	1,351	1,181	872
DIXIE	45	25	32	25	18	OSCEOLA	221	245	194	221	163
DUVAL	862	825	971	905	778	PALM BEACH	1,197	1,117	1,115	1,208	1,025
ESCAMBIA	497	429	429	448	439	PASCO	451	407	470	434	383
FLAGLER	56	46	58	56	48	PINELLAS	1,226	1,302	1,286	1,433	1,218
FRANKLIN	27	21	21	25	26	POLK	793	684	629	519	515
GADSDEN	137	113	113	109	102	PUTNAM	147	142	160	147	76
GILCHRIST	18	20	13	24	23	ST. JOHNS	200	215	208	186	140
GLADES	18	7	22	16	20	ST. LUCIE	199	219	173	180	163
GULF	20	27	27	17	23	SANTA ROSA	158	141	127	148	156
HAMILTON	33	22	17	12	18	SARASOTA	422	428	388	417	338
HARDEE	25	20	26	21	30	SEMINOLE	311	238	278	258	198
HENDRY	79	69	49	36	59	SUMTER	71	82	66	66	54
HERNANDO	190	159	149	184	143	SUWANNEE	56	67	63	63	47
HIGHLANDS	65	51	86	58	74	TAYLOR	21	33	23	23	33
HILLSBOROUGH	1,624	1,533	1,766	1,779	1,512	UNION	17	13	13	26	12
HOLMES	43	20	34	18	10	VOLUSIA	577	592	671	611	548
INDIAN RIVER	127	112	131	130	122	WAKULLA	56	61	65	50	42
JACKSON	82	70	74	65	65	WALTON	123	92	102	75	81
JEFFERSON	18	16	19	28	25	WASHINGTON	48	39	28	23	29
LAFAYETTE	24	9	14	6	11	UNKNOWN	15	1	2	0	0
LAKE	226	208	230	207	219	STATEWIDE	20,066	19,073	19,775	20,001	16,864
LEE	534	572	560	625	524						

COUNTY DATA

TABLE 30 5-YEAR VEHICLE AND/OR PROPERTY DAMAGE ONLY
CRASH HISTORY By County

COUNTY	1998	1999	2000	2001	2002	COUNTY	1998	1999	2000	2001	2002
ALACHUA	1,846	1,675	1,652	1,867	1,944	LEON	3,032	3,060	2,924	3,086	3,211
BAKER	50	81	84	79	75	LEVY	99	121	109	128	134
BAY	971	725	706	761	933	LIBERTY	14	15	10	12	15
BRADFORD	79	77	75	131	122	MADISON	85	69	74	66	83
BREVARD	1,363	1,589	1,565	1,619	1,466	MANATEE	1,194	1,249	1,389	1,581	1,553
BROWARD	10,487	10,869	11,152	11,853	11,077	MARION	750	841	802	919	1,132
CALHOUN	17	21	21	25	27	MARTIN	615	516	501	707	720
CHARLOTTE	685	633	670	717	736	MIAMI-DADE	23,392	24,774	25,713	27,825	24,717
CITRUS	341	314	287	387	275	MONROE	423	478	477	639	658
CLAY	402	537	591	491	868	NASSAU	147	183	203	203	215
COLLIER	902	1,131	1,184	1,287	1,267	OKALOOSA	514	610	666	842	798
COLUMBIA	178	172	174	245	204	OKEECHOBEE	177	135	99	95	118
DE SOTO	93	83	87	103	94	ORANGE	5,457	5,705	5,071	5,617	5,166
DIXIE	51	42	44	37	55	OSCEOLA	670	717	639	755	651
DUVAL	5,617	6,374	6,865	7,399	7,405	PALM BEACH	4,785	5,052	5,372	5,830	5,488
ESCAMBIA	1,287	1,228	1,111	1,082	1,182	PASCO	1,110	1,252	1,120	1,195	1,345
FLAGLER	91	99	93	55	102	PINELLAS	4,503	4,935	5,329	6,304	6,026
FRANKLIN	43	35	24	32	37	POLK	2,875	2,755	2,383	2,391	2,347
GADSDEN	206	224	249	264	214	PUTNAM	391	459	407	415	420
GILCHRIST	31	46	30	52	48	ST. JOHNS	565	595	513	578	572
GLADES	33	27	36	52	40	ST. LUCIE	710	776	768	840	796
GULF	45	45	52	29	28	SANTA ROSA	342	242	250	255	304
HAMILTON	49	28	30	29	47	SARASOTA	1,759	1,551	1,341	1,397	1,433
HARDEE	98	81	102	101	95	SEMINOLE	1,321	1,308	1,350	1,281	1,134
HENDRY	121	112	91	110	122	SUMTER	139	160	147	162	154
HERNANDO	238	282	266	287	310	SUWANNEE	174	195	118	118	119
HIGHLANDS	159	134	134	225	271	TAYLOR	99	86	62	82	96
HILLSBOROUGH	6,947	6,859	8,038	8,477	9,153	UNION	19	16	6	31	21
HOLMES	23	19	20	37	40	VOLUSIA	2,457	2,655	2,617	2,764	2,677
INDIAN RIVER	401	517	611	669	636	WAKULLA	50	61	58	76	84
JACKSON	97	108	128	155	165	WALTON	114	124	132	119	173
JEFFERSON	39	31	50	43	34	WASHINGTON	44	39	34	49	46
LAFAYETTE	19	32	19	15	16	UNKNOWN	121	66	18	4	0
LAKE	714	796	865	879	896	STATEWIDE	93,520	97,612	99,712	108,244	104,662
LEE	1,650	1,786	1,904	2,284	2,272						

COUNTY DATA

TABLE 31 5-YEAR MOTORCYCLE FATALITY HISTORY By County

COUNTY	1998	1999	2000	2001	2002	COUNTY	1998	1999	2000	2001	2002
ALACHUA	4	3	3	1	1	LEON	1	1	0	3	2
BAKER	0	0	0	0	0	LEVY	0	0	0	5	0
BAY	2	3	3	5	2	LIBERTY	0	1	0	0	1
BRADFORD	1	0	1	1	0	MADISON	0	0	0	1	0
BREVARD	7	2	8	7	7	MANATEE	1	3	3	5	4
BROWARD	14	10	17	23	29	MARION	3	4	8	10	5
CALHOUN	0	0	0	0	0	MARTIN	0	0	2	3	3
CHARLOTTE	0	1	2	3	3	MIAMI-DADE	19	19	22	33	27
CITRUS	1	1	4	1	3	MONROE	2	3	7	3	1
CLAY	1	4	0	2	2	NASSAU	1	0	0	1	1
COLLIER	0	0	4	2	4	OKALOOSA	2	1	0	3	3
COLUMBIA	1	0	1	0	0	OKEECHOBEE	2	0	0	1	1
DE SOTO	0	0	1	0	0	ORANGE	6	12	9	5	13
DIXIE	0	0	0	3	0	OSCEOLA	2	2	6	2	2
DUVAL	4	5	9	8	12	PALM BEACH	4	10	14	13	23
ESCAMBIA	2	1	5	4	5	PASCO	6	4	3	5	9
FLAGLER	2	2	3	0	4	PINELLAS	8	8	12	10	12
FRANKLIN	0	0	0	0	0	POLK	4	2	9	5	6
GADSDEN	0	1	0	1	0	PUTNAM	1	2	3	2	3
GILCHRIST	0	0	0	1	0	ST. JOHNS	2	1	2	2	5
GLADES	0	0	0	0	1	ST. LUCIE	3	3	2	4	7
GULF	0	1	0	0	0	SANTA ROSA	1	0	1	1	2
HAMILTON	0	0	0	0	0	SARASOTA	3	0	5	6	3
HARDEE	0	0	0	1	1	SEMINOLE	2	1	5	7	3
HENDRY	4	0	1	1	0	SUMTER	0	3	1	0	0
HERNANDO	4	2	4	2	2	SUWANNEE	0	0	0	1	1
HIGHLANDS	0	1	1	2	2	TAYLOR	1	0	0	0	0
HILLSBOROUGH	17	13	16	14	22	UNION	0	1	0	0	0
HOLMES	0	0	0	1	0	VOLUSIA	13	18	17	15	21
INDIAN RIVER	1	0	0	1	2	WAKULLA	0	0	0	1	0
JACKSON	0	0	0	2	0	WALTON	0	0	1	0	0
JEFFERSON	0	0	0	1	0	WASHINGTON	0	0	0	2	0
LAFAYETTE	1	0	0	0	0	UNKNOWN	0	0	0	0	0
LAKE	2	3	6	7	5	STATEWIDE	158	156	227	252	274
LEE	3	4	6	9	9						

COUNTY DATA

TABLE 32 5-YEAR MOTORCYCLE INJURY HISTORY By County

COUNTY	1998	1999	2000	2001	2002	COUNTY	1998	1999	2000	2001	2002
ALACHUA	66	54	41	45	73	LEON	51	57	68	66	74
BAKER	4	4	2	4	1	LEVY	10	8	9	15	9
BAY	36	42	50	47	84	LIBERTY	0	0	0	0	1
BRADFORD	1	2	7	4	9	MADISON	5	3	1	3	1
BREVARD	121	120	132	186	155	MANATEE	70	67	69	78	76
BROWARD	334	400	488	473	453	MARION	49	52	71	63	82
CALHOUN	1	2	4	2	4	MARTIN	31	26	36	32	42
CHARLOTTE	41	23	34	47	40	MIAMI-DADE	457	457	516	680	622
CITRUS	24	26	24	30	35	MONROE	179	180	196	209	227
CLAY	17	21	33	40	46	NASSAU	12	16	11	8	17
COLLIER	37	28	49	45	65	OKALOOSA	27	44	33	38	49
COLUMBIA	12	10	17	14	24	OKEECHOBEE	10	13	9	7	9
DE SOTO	11	2	8	7	7	ORANGE	222	255	273	264	312
DIXIE	2	3	1	4	3	OSCEOLA	40	33	47	52	61
DUVAL	184	194	246	274	319	PALM BEACH	215	203	255	270	298
ESCAMBIA	54	66	93	103	78	PASCO	90	86	81	68	99
FLAGLER	13	15	20	30	34	PINELLAS	222	199	237	289	317
FRANKLIN	2	4	1	2	4	POLK	99	104	101	134	161
GADSDEN	7	7	5	11	11	PUTNAM	11	19	19	29	15
GILCHRIST	0	2	5	1	6	ST. JOHNS	37	45	50	61	76
GLADES	9	2	5	4	2	ST. LUCIE	30	35	29	54	23
GULF	2	2	4	2	1	SANTA ROSA	24	24	20	24	22
HAMILTON	2	1	0	1	4	SARASOTA	76	93	90	79	94
HARDEE	5	5	6	5	5	SEMINOLE	80	76	81	95	97
HENDRY	10	7	4	4	6	SUMTER	6	15	11	12	10
HERNANDO	29	39	40	51	45	SUWANNEE	7	2	9	4	6
HIGHLANDS	9	17	17	15	19	TAYLOR	4	2	1	1	6
HILLSBOROUGH	241	233	278	317	346	UNION	2	0	3	2	0
HOLMES	2	3	2	2	2	VOLUSIA	288	335	354	440	437
INDIAN RIVER	9	13	21	27	25	WAKULLA	13	5	2	4	5
JACKSON	8	9	6	7	4	WALTON	9	11	10	14	14
JEFFERSON	4	1	3	5	3	WASHINGTON	1	3	2	1	6
LAFAYETTE	1	1	0	0	2	UNKNOWN	1	1	0	0	0
LAKE	48	53	44	79	62	STATEWIDE	3,824	3,969	4,476	5,101	5,384
LEE	100	89	92	117	139						

COUNTY DATA

TABLE 33 5-YEAR BICYCLE FATALITY HISTORY By County

COUNTY	1998	1999	2000	2001	2002	COUNTY	1998	1999	2000	2001	2002
ALACHUA	1	5	0	4	2	LEON	0	0	1	0	2
BAKER	0	0	0	0	0	LEVY	0	0	0	0	0
BAY	1	2	1	3	1	LIBERTY	0	0	0	0	0
BRADFORD	0	0	0	0	0	MADISON	0	0	0	0	0
BREVARD	1	3	0	2	3	MANATEE	4	3	4	3	2
BROWARD	11	14	6	6	4	MARION	0	2	1	4	2
CALHOUN	1	0	0	1	0	MARTIN	1	3	1	1	0
CHARLOTTE	0	1	1	0	2	MIAMI-DADE	8	11	6	10	17
CITRUS	2	0	0	0	3	MONROE	3	2	1	0	1
CLAY	0	0	0	0	1	NASSAU	0	0	0	0	0
COLLIER	4	3	1	4	5	OKALOOSA	2	2	0	0	1
COLUMBIA	0	0	0	0	1	OKEECHOBEE	2	1	1	1	0
DE SOTO	0	1	1	0	0	ORANGE	5	5	3	7	6
DIXIE	0	0	0	0	0	OSCEOLA	1	2	3	3	3
DUVAL	3	4	5	3	2	PALM BEACH	4	4	4	11	8
ESCAMBIA	2	0	2	1	1	PASCO	1	2	0	3	4
FLAGLER	0	1	0	1	1	PINELLAS	7	8	6	7	6
FRANKLIN	0	0	0	0	0	POLK	1	3	3	4	1
GADSDEN	1	1	0	0	0	PUTNAM	1	0	0	1	0
GILCHRIST	0	0	0	0	0	ST. JOHNS	0	2	3	2	1
GLADES	0	0	1	0	0	ST. LUCIE	1	2	2	2	1
GULF	0	0	0	0	0	SANTA ROSA	0	0	1	0	1
HAMILTON	0	0	0	0	0	SARASOTA	4	3	4	1	1
HARDEE	0	0	0	0	0	SEMINOLE	0	1	2	0	0
HENDRY	0	0	0	0	0	SUMTER	0	0	0	0	1
HERNANDO	0	2	1	1	1	SUWANNEE	0	0	0	0	0
HIGHLANDS	0	1	2	1	0	TAYLOR	0	0	0	0	0
HILLSBOROUGH	10	9	8	9	9	UNION	0	0	0	0	0
HOLMES	0	0	0	0	0	VOLUSIA	4	1	2	4	2
INDIAN RIVER	1	1	1	1	0	WAKULLA	0	0	0	0	0
JACKSON	0	2	1	0	0	WALTON	0	0	0	0	0
JEFFERSON	0	0	0	0	0	WASHINGTON	0	0	0	0	0
LAFAYETTE	0	0	0	0	0	UNKNOWN	0	1	0	0	0
LAKE	3	0	1	2	5	STATEWIDE	95	115	83	107	108
LEE	5	7	3	4	7						

COUNTY DATA

TABLE 34 5-YEAR BICYCLE INJURY HISTORY By County

COUNTY	1998	1999	2000	2001	2002	COUNTY	1998	1999	2000	2001	2002
ALACHUA	155	120	108	102	121	LEON	59	63	51	41	45
BAKER	2	0	1	4	2	LEVY	3	7	3	3	4
BAY	29	38	31	36	45	LIBERTY	1	0	0	1	1
BRADFORD	5	1	1	0	1	MADISON	2	3	1	3	0
BREVARD	137	134	113	130	139	MANATEE	108	112	88	107	103
BROWARD	683	595	648	597	660	MARION	38	27	42	25	33
CALHOUN	0	0	2	2	0	MARTIN	49	45	37	41	48
CHARLOTTE	30	28	26	29	34	MIAMI-DADE	616	605	582	543	566
CITRUS	22	15	5	10	15	MONROE	81	64	100	83	98
CLAY	18	32	19	26	31	NASSAU	12	8	4	3	9
COLLIER	84	90	75	90	99	OKALOOSA	28	27	38	29	46
COLUMBIA	9	3	2	9	4	OKEECHOBEE	2	2	6	4	2
DE SOTO	9	10	11	6	10	ORANGE	313	301	291	275	268
DIXIE	2	2	0	0	0	OSCEOLA	49	42	40	45	38
DUVAL	234	212	171	218	254	PALM BEACH	418	354	390	362	421
ESCAMBIA	67	59	54	75	69	PASCO	83	82	91	65	97
FLAGLER	4	5	7	6	12	PINELLAS	437	416	388	390	401
FRANKLIN	1	0	1	3	2	POLK	140	118	90	92	115
GADSDEN	5	7	3	1	1	PUTNAM	12	7	9	14	12
GILCHRIST	0	2	0	2	1	ST. JOHNS	45	35	35	36	44
GLADES	0	0	1	3	0	ST. LUCIE	30	34	40	37	47
GULF	0	0	0	0	2	SANTA ROSA	15	8	14	9	12
HAMILTON	3	0	0	1	1	SARASOTA	160	119	122	134	135
HARDEE	4	2	2	3	4	SEMINOLE	99	82	66	39	77
HENDRY	12	8	5	4	7	SUMTER	5	8	2	2	8
HERNANDO	24	28	20	18	15	SUWANNEE	9	3	5	3	3
HIGHLANDS	7	8	7	10	6	TAYLOR	4	3	1	2	2
HILLSBOROUGH	364	357	376	323	417	UNION	1	2	0	2	0
HOLMES	0	1	0	1	0	VOLUSIA	185	207	169	184	187
INDIAN RIVER	29	31	30	30	28	WAKULLA	0	0	0	0	0
JACKSON	0	1	2	4	1	WALTON	6	3	7	1	4
JEFFERSON	0	0	1	2	0	WASHINGTON	0	4	2	0	1
LAFAYETTE	0	1	0	0	0	UNKNOWN	2	4	0	0	0
LAKE	25	24	24	30	29	STATEWIDE	5,110	4,731	4,585	4,476	4,970
LEE	134	122	125	126	133						

COUNTY DATA

TABLE 35 5-YEAR PEDESTRIAN FATALITY HISTORY By County

COUNTY	1998	1999	2000	2001	2002	COUNTY	1998	1999	2000	2001	2002
ALACHUA	3	2	9	4	2	LEON	2	0	8	2	2
BAKER	1	2	1	0	1	LEVY	0	0	1	1	1
BAY	4	6	4	4	4	LIBERTY	0	0	0	0	1
BRADFORD	3	0	2	1	1	MADISON	0	0	1	0	0
BREVARD	9	9	10	12	11	MANATEE	12	8	6	12	5
BROWARD	57	49	41	42	36	MARION	8	8	9	14	10
CALHOUN	0	0	0	0	0	MARTIN	2	3	4	4	7
CHARLOTTE	1	0	1	1	0	MIAMI-DADE	86	82	81	71	82
CITRUS	5	6	1	4	5	MONROE	6	6	4	4	1
CLAY	4	2	5	3	0	NASSAU	5	1	0	3	1
COLLIER	5	7	5	6	4	OKALOOSA	2	2	4	3	7
COLUMBIA	5	2	3	3	1	OKEECHOBEE	2	0	2	3	1
DE SOTO	0	1	2	1	0	ORANGE	49	38	39	40	39
DIXIE	0	0	2	1	0	OSCEOLA	9	4	9	6	5
DUVAL	29	19	21	23	21	PALM BEACH	31	29	32	35	25
ESCAMBIA	7	12	8	6	10	PASCO	17	18	17	19	24
FLAGLER	1	2	2	0	1	PINELLAS	34	36	41	19	31
FRANKLIN	1	0	0	1	0	POLK	20	16	15	13	15
GADSDEN	2	5	2	3	0	PUTNAM	0	1	5	6	3
GILCHRIST	0	0	0	0	0	ST. JOHNS	5	3	3	4	4
GLADES	0	2	0	1	0	ST. LUCIE	4	3	4	7	6
GULF	0	0	0	1	0	SANTA ROSA	2	0	1	4	5
HAMILTON	0	0	1	0	0	SARASOTA	9	8	7	7	9
HARDEE	1	2	0	0	3	SEMINOLE	13	7	4	7	6
HENDRY	3	2	2	3	3	SUMTER	2	1	1	3	2
HERNANDO	2	1	3	4	2	SUWANNEE	1	0	1	1	2
HIGHLANDS	5	4	1	4	4	TAYLOR	1	0	0	0	1
HILLSBOROUGH	38	50	35	40	36	UNION	0	0	1	0	0
HOLMES	1	1	0	1	0	VOLUSIA	18	13	17	18	20
INDIAN RIVER	1	2	1	6	1	WAKULLA	0	0	0	1	0
JACKSON	1	2	1	1	2	WALTON	1	0	2	2	2
JEFFERSON	0	1	0	1	1	WASHINGTON	0	1	0	0	0
LAFAYETTE	0	0	0	0	0	UNKNOWN	0	0	0	0	0
LAKE	7	4	3	8	7	STATEWIDE	548	501	506	510	484
LEE	11	18	21	16	11						

COUNTY DATA

TABLE 36 5-YEAR PEDESTRIAN INJURY HISTORY By County

COUNTY	1998	1999	2000	2001	2002	COUNTY	1998	1999	2000	2001	2002
ALACHUA	93	97	100	103	97	LEON	101	95	96	108	119
BAKER	4	5	2	3	1	LEVY	11	5	9	6	7
BAY	83	72	60	62	67	LIBERTY	0	3	2	0	1
BRADFORD	5	6	5	11	10	MADISON	5	5	6	2	2
BREVARD	134	171	167	151	175	MANATEE	126	122	107	139	130
BROWARD	1,023	903	969	993	938	MARION	78	60	75	88	74
CALHOUN	1	3	2	1	0	MARTIN	44	55	46	35	42
CHARLOTTE	50	27	45	32	47	MIAMI-DADE	1,678	1,588	1,643	1,717	1,571
CITRUS	21	31	21	27	19	MONROE	35	45	61	44	55
CLAY	35	46	45	43	49	NASSAU	13	10	12	12	18
COLLIER	78	79	99	109	73	OKALOOSA	45	39	49	58	52
COLUMBIA	22	17	18	19	19	OKEECHOBEE	17	13	13	15	9
DE SOTO	9	7	12	12	11	ORANGE	618	610	545	560	494
DIXIE	1	2	1	1	2	OSCEOLA	82	68	76	80	69
DUVAL	395	349	396	408	345	PALM BEACH	604	565	609	625	502
ESCAMBIA	145	124	111	110	121	PASCO	139	112	110	124	123
FLAGLER	15	12	7	15	7	PINELLAS	490	436	476	438	443
FRANKLIN	4	0	5	2	2	POLK	218	201	188	180	176
GADSDEN	20	9	11	13	9	PUTNAM	37	20	33	30	29
GILCHRIST	0	2	3	3	2	ST. JOHNS	33	39	44	27	41
GLADES	3	2	0	2	2	ST. LUCIE	80	78	51	68	62
GULF	2	11	2	1	0	SANTA ROSA	23	28	21	25	24
HAMILTON	4	1	3	3	0	SARASOTA	131	125	119	117	124
HARDEE	9	6	8	15	6	SEMINOLE	96	103	104	100	106
HENDRY	10	10	8	7	19	SUMTER	6	12	9	5	13
HERNANDO	39	47	38	49	44	SUWANNEE	10	6	6	4	7
HIGHLANDS	17	17	9	16	23	TAYLOR	10	3	1	3	4
HILLSBOROUGH	565	489	564	577	544	UNION	3	3	4	1	0
HOLMES	2	1	0	1	2	VOLUSIA	243	237	235	223	227
INDIAN RIVER	35	38	40	26	26	WAKULLA	11	2	3	2	8
JACKSON	7	11	15	10	6	WALTON	10	7	14	10	7
JEFFERSON	2	1	1	0	1	WASHINGTON	9	2	2	5	3
LAFAYETTE	0	3	4	2	2	UNKNOWN	10	3	6	0	0
LAKE	63	45	44	52	58	STATEWIDE	8,074	7,536	7,782	7,894	7,447
LEE	162	192	192	164	178						

VEHICLE AND TRUCK INFORMATION

TABLE 37 Crashes BY VEHICLE TYPE

VEHICLE TYPE	All Crashes	Fatal Crashes	Injury Crashes	Property Damage Only Crashes
Automobile	247,789	2,360	176,099	69,330
Passenger Van	29,059	329	21,052	7,678
Light Truck (2 rear tires)	63,657	853	44,970	17,834
Medium Truck (4 rear tires)	5,099	89	3,444	1,566
Heavy Truck	3,760	112	2,335	1,313
Truck-Tractor (Cab)	4,745	198	2,864	1,683
Motor Home (RV)	277	8	185	84
Bus (driver + seats for 9-15)	365	4	229	132
Bus (driver + seats for over 15)	2,125	21	1,304	800
Bicycle	5,451	111	5,028	312
Motorcycle	6,165	321	5,598	246
Moped	561	10	512	39
All Terrain Vehicle	430	15	386	29
Train	59	9	27	23
Low Speed Vehicle	125	0	106	19
Other	2,220	23	1,604	593
TOTAL	371,887	4,463	265,743	101,681

TABLE 38 CONTRIBUTING CAUSES Attributed to Drivers in Truck Crashes*

CONTRIBUTING CAUSE	Light Pickup Truck	Medium Truck	Heavy Truck	Truck Tractor (Cab)
Careless Driving	13,152	1,057	717	933
Failed/Yield Right-of-Way	5,517	363	208	196
Improper Backing	577	108	128	94
Improper Lane Change	830	133	130	231
Improper Turn	999	100	94	135
Alcohol-Under Influence	1,940	48	7	5
Drugs-Under Influence	96	2	1	1
Alcohol & Drugs-Under Influ.	283	5	1	1
Followed Too Closely	1,538	140	89	88
Disregarded Traffic Signal	1,369	96	48	59
Exceeded Speed Limit	1,550	69	64	113
Disregarded Stop Sign	537	45	13	11
Failed to Maintain Equip.	397	74	78	57
Improper Passing	183	12	10	10
Drove Left of Center	350	25	18	26
Obstructing Traffic	89	17	15	14
Improper Load	75	18	16	33
Disregard Other Traff. Control	83	7	5	4
Driving Wrong Side/Way	137	4	5	4
Driver Distraction	399	23	5	12
All Other	4,410	432	319	382
TOTAL	34,511	2,778	1,971	2,409

* There can be up to three contributing causes per driver.

ALCOHOL-RELATED CRASHES BY CITY/LOCALITY

Locality	County	Total Crashes	Alcohol-Related Crashes		Locality	County	Total Crashes	Alcohol-Related Crashes	
			Crashes	as % of Total				Crashes	as % of Total
Alachua	Alachua	153	10	6.54	Bristol	Liberty	5	2	40.00
Alford	Jackson	3	0	0.00	Broadview	Broward	1	0	0.00
Altamonte Springs	Seminole	395	37	9.37	Bronson	Levy	12	2	16.67
Altha	Calhoun	2	1	50.00	Brooker	Bradford	2	1	50.00
Anna Maria	Manatee	11	1	9.09	Brooksville	Hernando	84	7	8.33
Apalachicola	Franklin	7	0	0.00	Bunche Park	Miami-Dade	1	0	0.00
Apopka	Orange	232	18	7.76	Bunnell	Flagler	40	5	12.50
Arcadia	DeSoto	77	4	5.19	Bushnell	Sumter	61	4	6.56
Archer	Alachua	13	0	0.00	Callahan	Nassau	24	1	4.17
Astula	Lake	2	0	0.00	Calloway	Bay	97	14	14.43
Atlantic Beach	Duval	164	26	15.85	Cantonment	Escambia	24	0	0.00
Atlantis	Palm Beach	21	3	14.29	Cape Canaveral	Brevard	77	16	20.78
Auburndale	Polk	239	8	3.35	Cape Coral	Lee	1,048	107	10.21
Aventura	Miami-Dade	699	25	3.58	Carol City	Miami-Dade	215	4	1.86
Avon Park	Highlands	154	14	9.09	Carrabelle	Franklin	5	1	20.00
Bal Harbour	Miami-Dade	51	1	1.96	Carver Ranch Estates	Broward	1	0	0.00
Baldwin	Duval	14	2	14.29	Caryville	Washington	31	5	16.13
Bartow	Polk	216	10	4.63	Casselberry	Seminole	201	17	8.46
Bay Harbor Islands	Miami-Dade	38	0	0.00	Cedar Grove	Bay	57	9	15.79
Bay Lake	Orange	24	1	4.17	Cedar Hammock/ Bradenton Shores	Manatee	3	0	0.00
Bayard	Duval	3	0	0.00	Cedar Key	Levy	4	0	0.00
Bell	Gilchrist	5	0	0.00	Century	Escambia	12	3	25.00
Belle Glade	Palm Beach	166	13	7.83	Chattahoochee	Gadsden	22	3	13.64
Belle Isle	Orange	2	1	50.00	Chiefland	Levy	46	4	8.70
Belleair	Pinellas	19	2	10.53	Cinco Bayou	Okaloosa	10	3	30.00
Belleair Beach	Pinellas	10	3	30.00	Clair-Mel	Hillsborough	8	0	0.00
Belleair Bluffs	Pinellas	30	4	13.33	Clearwater	Pinellas	1,867	227	12.16
Bellview	Marion	120	7	5.83	Clermont	Lake	153	11	7.19
Beverly Beach	Flagler	1	1	100.00	Clewiston	Hendry	63	8	12.70
Biscayne Gardens	Miami-Dade	3	0	0.00	Cloud Lake	Palm Beach	3	0	0.00
Biscayne Park	Miami-Dade	10	1	10.00	Cocoa	Brevard	425	35	8.24
Blountstown	Calhoun	12	3	25.00	Cocoa Beach	Brevard	237	43	18.14
Boca Chica	Monroe	2	1	50.00	Cocoa West	Brevard	5	0	0.00
Boca Chica NAS	Monroe	2	0	0.00	Coconut Creek	Broward	616	45	7.31
Boca Raton	Palm Beach	1,437	89	6.19	Collier Manor/ Cresthaven	Broward	3	1	33.33
Bonifay	Holmes	19	4	21.05	Cooper City	Broward	269	16	5.95
Bonita Springs	Lee	220	31	14.09	Coral Gables	Miami-Dade	813	52	6.40
Bowling Green	Hardee	16	2	12.50	Coral Springs	Broward	1,835	50	2.72
Boynton Beach	Palm Beach	979	87	8.89	Coral Way Village	Miami-Dade	4	0	0.00
Bradenton	Manatee	253	20	7.91	Cottondale	Jackson	2	1	50.00
Bradenton Beach	Manatee	19	3	15.79	Crawfordville	Wakulla	18	3	16.67
Brandon	Hillsborough	161	12	7.45	Crescent City	Putnam	28	3	10.71
Branford	Suwannee	8	1	12.50	Crestview	Okaloosa	312	19	6.09
Brent	Escambia	60	3	5.00					
Briny Breezes	Palm Beach	1	0	0.00					

ALCOHOL-RELATED CRASHES BY CITY/LOCALITY

Locality	County	Total Crashes	Alcohol-Related Crashes	Alcohol-Related Crashes as % of Total	Locality	County	Total Crashes	Alcohol-Related Crashes	Alcohol-Related Crashes as % of Total
Cross City	Dixie	19	3	15.79	Florida City	Miami-Dade	226	12	5.31
Cross City AF Station	Dixie	1	0	0.00	Florida Institute of Technology	Brevard	1	0	0.00
Crystal River	Citrus	164	14	8.54	Florida State University	Leon	17	1	5.88
Cutler Ridge	Miami-Dade	30	0	0.00	Fort Lauderdale	Broward	4,206	311	7.39
Dade City	Pasco	169	12	7.10	Fort Meade	Polk	36	4	11.11
Dade County School PD	Miami-Dade	30	0	0.00	Fort Myers	Lee	1,739	132	7.59
Dania Beach	Broward	403	37	9.18	Fort Myers Beach	Lee	47	13	27.66
Davenport	Polk	1	0	0.00	Fort Myers SE	Lee	2	0	0.00
Davie	Broward	1,533	93	6.07	Fort Myers SW	Lee	20	3	15.00
Daytona Beach	Volusia	2,295	190	8.28	Fort Myers Village/Pin Mn	Lee	9	3	33.33
Daytona Beach Shores	Volusia	65	16	24.62	Fort Pierce	St. Lucie	542	47	8.67
De Leon Springs	Volusia	12	0	0.00	Fort Pierce NW	St. Lucie	7	0	0.00
DeBary	Volusia	84	7	8.33	Fort Walton Beach	Okaloosa	324	41	12.65
Deerfield Beach	Broward	1,127	66	5.86	Fort White	Columbia	4	1	25.00
Defuniak Springs	Walton	161	13	8.07	Freeport	Walton	10	2	20.00
DeLand	Volusia	295	26	8.81	Frostproof	Polk	16	1	6.25
Delray Beach	Palm Beach	1,049	85	8.10	Fruitland Park	Lake	78	12	15.38
Deltona	Volusia	497	50	10.06	Gainesville	Alachua	2,087	156	7.47
Destin	Walton	7	2	28.57	Glen St. Mary	Baker	2	0	0.00
Dinsmore	Duval	4	0	0.00	Golden Beach	Miami-Dade	2	1	50.00
Dundee	Polk	4	0	0.00	Golden Glades	Miami-Dade	12	0	0.00
Dunedin	Pinellas	474	53	11.18	Golf Village	Palm Beach	1	0	0.00
Eagle Lake	Polk	10	0	0.00	Golfview	Palm Beach	1	0	0.00
East Naples	Collier	385	62	16.10	Goulds	Miami-Dade	13	2	15.38
Eastpoint	Franklin	15	4	26.67	Graceville	Jackson	11	1	9.09
Eatonville	Orange	1	0	0.00	Grand Ridge	Jackson	4	0	0.00
Eau Gallie	Brevard	1	0	0.00	Green Cove Springs	Clay	76	2	2.63
Ebro	Washington	4	0	0.00	Greenacres City	Palm Beach	222	23	10.36
Edgewater	Volusia	267	29	10.86	Greensboro	Gadsden	1	0	0.00
Edgewood	Orange	58	4	6.90	Greenville	Madison	6	0	0.00
Egypt Lake	Hillsborough	1	0	0.00	Gretna	Gadsden	1	0	0.00
El Portal	Miami-Dade	1	0	0.00	Groveland	Lake	61	2	3.28
Ellyson Field NAS	Escambia	2	0	0.00	Gulf Breeze	Santa Rosa	85	14	16.47
Englewood	Charlotte	209	25	11.96	Gulf Stream	Palm Beach	3	0	0.00
Englewood	Sarasota	2	0	0.00	Gulfport	Pinellas	140	21	15.00
Eustis	Lake	208	20	9.62	Hacienda	Broward	1	0	0.00
Everglades	Collier	4	1	25.00	Haines City	Polk	283	27	9.54
Fanning Springs	Gilchrist	6	2	33.33	Hallandale	Broward	604	35	5.79
Fanning Springs	Levy	7	2	28.57	Hampton	Bradford	6	1	16.67
Fellsmere	Indian River	14	5	35.71	Hastings	St. Johns	7	0	0.00
Fernandina Beach	Nassau	98	13	13.27	Havana	Gadsden	1	0	0.00
Flagler Beach	Flagler	24	4	16.67	Haverhill	Palm Beach	11	2	18.18
Florida A&M University	Leon	53	0	0.00	Hawthorne	Alachua	27	3	11.11
Florida Atlantic Univ.	Palm Beach	34	1	2.94	Hialeah	Miami-Dade	3,658	169	4.62

ALCOHOL-RELATED CRASHES BY CITY/LOCALITY

Locality	County	Total Crashes	Alcohol-Related Crashes	Alcohol-Related Crashes as % of Total	Locality	County	Total Crashes	Alcohol-Related Crashes	Alcohol-Related Crashes as % of Total
Hialeah Gardens	Miami-Dade	213	6	2.82	Key Largo	Monroe	185	26	14.05
High Springs	Alachua	71	4	5.63	Key West	Monroe	751	106	14.11
Highland Beach	Palm Beach	17	1	5.88	Keystone Heights	Clay	13	2	15.38
Hilliard	Nassau	13	2	15.38	Kissimmee	Osceola	341	41	12.02
Hillsboro Beach	Broward	17	3	17.65	La Belle	Hendry	36	4	11.11
Hobe Sound	Martin	72	12	16.67	La Crosse	Alachua	2	1	50.00
Holden Hills	Orange	2	0	0.00	Lady Lake	Lake	127	9	7.09
Holly Hill	Volusia	166	16	9.64	Lake Alfred	Polk	48	4	8.33
Hollywood	Broward	2,778	121	4.36	Lake Buena Vista	Orange	87	9	10.34
Hollywood Ridge Farm	Broward	1	0	0.00	Lake Butler	Union	16	0	0.00
Holmes Beach	Manatee	31	10	32.26	Lake Carroll	Hillsborough	4	0	0.00
Homestead	Miami-Dade	496	37	7.46	Lake City	Columbia	203	25	12.32
Homestead AFB	Miami-Dade	1	0	0.00	Lake Clark Shores	Palm Beach	3	2	66.67
Homosassa Springs	Citrus	2	1	50.00	Lake Hamilton	Polk	36	0	0.00
Howey-in-the-Hills	Lake	12	1	8.33	Lake Helen	Volusia	10	2	20.00
Hypoluxo	Palm Beach	16	5	31.25	Lake Holloway	Polk	5	0	0.00
Immokalee	Collier	304	44	14.47	Lake Magdalene	Hillsborough	19	1	5.26
Indialantic	Brevard	32	3	9.38	Lake Mary	Seminole	204	15	7.35
Indian Creek Village	Miami-Dade	6	0	0.00	Lake Park	Palm Beach	87	8	9.20
Indian Harbour Beach	Brevard	34	3	8.82	Lake Placid	Highlands	55	5	9.09
Indian River Shores	Indian River	19	4	21.05	Lake Wales	Polk	186	17	9.14
Indian Rocks Beach	Pinellas	50	11	22.00	Lake Worth	Palm Beach	838	82	9.79
Indian Shores	Pinellas	18	2	11.11	Lakeland	Polk	1,212	125	10.31
Indiantown	Martin	62	15	24.19	Land O' Lakes	Pasco	21	2	9.52
Inglis	Levy	11	2	18.18	Lantana	Palm Beach	270	32	11.85
Interlachen	Putnam	16	1	6.25	Largo	Pinellas	922	113	12.26
Inverness	Citrus	64	7	10.94	Lauderdale by the Sea	Broward	82	5	6.10
Islamorada	Monroe	174	22	12.64	Lauderdale Lakes	Broward	434	20	4.61
Islandia	Miami-Dade	1	0	0.00	Lauderhill	Broward	629	28	4.45
Jacksonville	Duval	14,112	1,043	7.39	Laurel Hill	Okaloosa	4	2	50.00
Jacksonville Beach	Duval	615	86	13.98	Lawtey	Bradford	1	0	0.00
Jacksonville NAS	Duval	1	0	0.00	Layton	Monroe	4	1	25.00
Jacksonville University	Duval	1	0	0.00	Lee	Madison	1	0	0.00
Jasper	Hamilton	27	1	3.70	Lee County Airport Police	Lee	10	0	0.00
Jay	Santa Rosa	1	0	0.00	Leesburg	Lake	304	28	9.21
Jennings	Hamilton	1	1	100.00	Lehigh Acres	Lee	45	6	13.33
Jensen Beach	Martin	169	36	21.30	Leisure City	Miami-Dade	6	0	0.00
Juno Beach	Palm Beach	18	4	22.22	Lighthouse Point	Broward	164	20	12.20
Jupiter	Palm Beach	461	63	13.67	Live Oak	Suwannee	103	12	11.65
Jupiter Island	Martin	7	2	28.57	Lockhart	Orange	1	0	0.00
Kendall	Miami-Dade	283	6	2.12	Longboat Key	Manatee	19	4	21.05
Kennedy Space Center	Brevard	16	1	6.25	Longboat Key	Sarasota	25	1	4.00
Kenneth City	Pinellas	50	5	10.00	Longwood	Seminole	200	22	11.00
Key Biscayne	Miami-Dade	75	2	2.67	Lynn Haven	Bay	156	12	7.69
Key Colony Beach	Monroe	7	1	14.29	Macclenny	Baker	53	8	15.09

ALCOHOL-RELATED CRASHES BY CITY/LOCALITY

Locality	County	Total Crashes	Alcohol-Related Crashes as % of Total		Locality	County	Total Crashes	Alcohol-Related Crashes as % of Total	
			Crashes	as % of Total				Crashes	as % of Total
MacDill AFB	Hillsborough	3	0	0.00	Naples	Collier	309	40	12.94
Madeira Beach	Pinellas	137	19	13.87	Naranja	Miami-Dade	7	0	0.00
Madison	Madison	46	0	0.00	Neptune Beach	Duval	50	13	26.00
Maitland	Orange	205	25	12.20	New Port Richey	Pasco	349	54	15.47
Malabar	Brevard	24	3	12.50	New Smyrna Beach	Volusia	311	38	12.22
Manalapan	Palm Beach	9	0	0.00	Newberry	Alachua	44	6	13.64
Mandarin	Duval	96	6	6.25	Niceville	Okaloosa	131	18	13.74
Mangonia Park	Palm Beach	64	2	3.13	Nokomis/Laurel	Sarasota	1	0	0.00
Marathon	Monroe	140	27	19.29	North Andrews Garden	Broward	4	1	25.00
Margate	Broward	659	61	9.26	North Bay Village	Miami-Dade	73	8	10.96
Marianna	Jackson	119	4	3.36	North Fort Myers	Lee	79	19	24.05
Marineland	Flagler	2	1	50.00	North Lauderdale	Broward	253	13	5.14
Mary Esther	Okaloosa	47	1	2.13	North Miami	Miami-Dade	2,079	37	1.78
Mascotte	Lake	29	9	31.03	North Miami Beach	Miami-Dade	771	24	3.11
Mayo	Lafayette	13	3	23.08	North Naples	Collier	329	65	19.76
McCoy AFB	Orange	7	2	28.57	North Palm Beach	Palm Beach	139	10	7.19
Medley	Miami-Dade	149	6	4.03	North Port	Sarasota	162	15	9.26
Melbourne	Brevard	682	104	15.25	North Redington Beach	Pinellas	10	3	30.00
Melbourne Beach	Brevard	12	1	8.33	Norwood	Miami-Dade	5	0	0.00
Melbourne Village	Brevard	5	0	0.00	Oak Hill	Volusia	8	2	25.00
Melrose Park	Broward	3	0	0.00	Oakland	Orange	39	3	7.69
Merritt Island	Brevard	385	66	17.14	Oakland Park	Broward	1,085	54	4.98
Mexico Beach	Bay	8	2	25.00	Ocala	Marion	1,310	67	5.11
Miami	Miami-Dade	11,579	385	3.32	Ocean City	Okaloosa	12	2	16.67
Miami Beach	Miami-Dade	2,650	211	7.96	Ocean Ridge	Palm Beach	8	0	0.00
Miami Lakes	Miami-Dade	420	11	2.62	Ocoee	Orange	263	29	11.03
Miami Shores	Miami-Dade	113	6	5.31	Ojus	Miami-Dade	4	0	0.00
Miami Springs	Miami-Dade	131	2	1.53	Okeechobee	Okeechobee	145	22	15.17
Miami TP	Miami-Dade	7	1	14.29	Oldsmar	Pinellas	219	27	12.33
Micanopy	Alachua	8	1	12.50	Olympia Heights	Miami-Dade	2	0	0.00
Miccosukee Indian Reservation	Miami-Dade	12	1	8.33	Oneco	Manatee	2	0	0.00
Middleburg	Clay	19	3	15.79	Opa Locka	Miami-Dade	183	8	4.37
Midway	Gadsden	4	1	25.00	Orange City	Volusia	163	9	5.52
Milton	Santa Rosa	117	8	6.84	Orange Park	Clay	108	8	7.41
Mims	Brevard	58	10	17.24	Orlando	Orange	5,471	260	4.75
Minneola	Lake	20	1	5.00	Orlando AFB	Orange	1	0	0.00
Miramar	Broward	619	39	6.30	Ormond Beach	Volusia	468	80	17.09
Montverde	Lake	1	0	0.00	Ormond By The Sea	Volusia	6	1	16.67
Moore Haven	Glades	4	1	25.00	Otter Creek	Levy	1	0	0.00
Mount Dora	Lake	199	22	11.06	Oviedo	Seminole	155	5	3.23
Mount Dora	Orange	1	0	0.00	Pahokee	Palm Beach	64	3	4.69
Mulberry	Polk	49	3	6.12	Palatka	Putnam	299	18	6.02
Munson Island	Monroe	1	0	0.00	Palm Bay	Brevard	556	96	17.27
Myrtle Grove	Escambia	76	4	5.26	Palm Beach	Palm Beach	76	11	14.47
					Palm Beach Gardens	Palm Beach	495	52	10.51

ALCOHOL-RELATED CRASHES BY CITY/LOCALITY

Locality	County	Total Crashes	Alcohol-Related Crashes	Alcohol-Related Crashes as % of Total	Locality	County	Total Crashes	Alcohol-Related Crashes	Alcohol-Related Crashes as % of Total
Palm Beach School Board	Palm Beach	3	1	33.33	Redington Beach	Pinellas	17	5	29.41
Palm Beach Shores	Palm Beach	10	1	10.00	Redington Shores	Pinellas	17	5	29.41
Palm City	Martin	75	14	18.67	Richmond Heights	Miami-Dade	360	13	3.61
Palm River/Clair Mel	Hillsborough	1	0	0.00	Ridgewood Heights	Sarasota	4	1	25.00
Palm Shores	Brevard	1	0	0.00	Riverland	Broward	4	0	0.00
Palm Springs	Palm Beach	82	8	9.76	Riviera Beach	Palm Beach	488	33	6.76
Palmetto	Manatee	177	14	7.91	Rockledge	Brevard	111	18	16.22
Palmetto Estates	Miami-Dade	4	0	0.00	Royal Palm Beach	Palm Beach	293	20	6.83
Panama City	Bay	804	86	10.70	Ruskin	Hillsborough	22	1	4.55
Panama City Beach	Bay	250	51	20.40	Safety Harbor	Pinellas	142	17	11.97
Parker	Bay	59	7	11.86	Saint Leo	Pasco	15	4	26.67
Parkland	Broward	63	6	9.52	Saint Marks	Wakulla	1	0	0.00
Patrick AFB	Brevard	1	0	0.00	San Antonio	Pasco	15	2	13.33
Pembroke Park	Broward	175	11	6.29	Sanford	Seminole	643	54	8.40
Pembroke Pines	Broward	1,606	69	4.30	Sanibel	Lee	43	3	6.98
Pensacola	Escambia	677	107	15.81	Santa Fe Community College	Alachua	15	0	0.00
Perrine	Miami-Dade	23	1	4.35	Santa Rosa Beach	Walton	8	2	25.00
Perry	Taylor	111	11	9.91	Sarasota	Sarasota	1,312	149	11.36
Pierson	Volusia	10	1	10.00	Sarasota South	Sarasota	17	5	29.41
Pine Crest Village	Miami-Dade	31	1	3.23	Sarasota Southeast	Sarasota	1	1	100.00
Pine Hills	Orange	16	0	0.00	Sarasota-Manatee Airport	Sarasota	1	1	100.00
Pinellas Park	Pinellas	802	105	13.09	Satellite Beach	Brevard	56	5	8.93
Pinewood	Miami-Dade	1	0	0.00	Sea Ranch Lakes	Broward	9	0	0.00
Plant City	Hillsborough	387	35	9.04	Sebastian	Indian River	79	15	18.99
Plantation	Broward	1,126	55	4.88	Sebring	Highlands	108	6	5.56
Plantation	Monroe	3	2	66.67	Seminole	Pinellas	396	37	9.34
Polk City	Polk	2	0	0.00	Seminole Indian Reservation	Broward	65	4	6.15
Pompano Beach	Broward	1,826	126	6.90	Seminole Park	Pinellas	3	1	33.33
Pompano Beach Highlands	Broward	7	1	14.29	Seville	Volusia	8	1	12.50
Ponce De Leon	Holmes	1	0	0.00	Sewalls Point	Martin	32	8	25.00
Ponce Inlet	Volusia	11	2	18.18	Shalimar	Okaloosa	25	2	8.00
Ponte Vedra	St. Johns	8	2	25.00	Silver Springs Shore	Marion	4	2	50.00
Port Charlotte	Charlotte	506	54	10.67	Sneads	Jackson	7	2	28.57
Port Orange	Volusia	351	61	17.38	Sopchoppy	Wakulla	2	0	0.00
Port Richey	Pasco	147	21	14.29	South Bay	Palm Beach	31	2	6.45
Port Saint Joe	Gulf	34	5	14.71	South Daytona	Volusia	162	35	21.60
Port Salerno	Martin	38	12	31.58	South Miami	Miami-Dade	143	3	2.10
Port St. Lucie	St. Lucie	608	76	12.50	South Miami Heights	Miami-Dade	2	0	0.00
Punta Gorda	Charlotte	115	8	6.96	South Palm Beach	Palm Beach	293	20	6.83
Quincy	Gadsden	135	8	5.93	South Pasedena	Pinellas	71	7	9.86
Raiford	Union	3	0	0.00	South Patrick Shores	Brevard	1	1	100.00
Reddick	Marion	2	0	0.00					

ALCOHOL-RELATED CRASHES BY CITY/LOCALITY

Locality	County	Total Crashes	Alcohol-Related Crashes		Total	Locality	County	Total Crashes	Alcohol-Related Crashes		Total
			Crashes	as % of Total					Crashes	as % of Total	
Springfield	Bay	95	9	9.47	University of						
St. Augustine	St. Johns	297	38	12.79	West Florida	Escambia	12	1	8.33		
St. Augustine Beach	St. Johns	46	12	26.09	Valparaiso	Okaloosa	31	2	6.45		
St. Cloud	Osceola	337	28	8.31	Venice	Sarasota	191	13	6.81		
St. Lucie Village	St. Lucie	2	1	50.00	Venice South	Sarasota	1	0	0.00		
St. Pete/Clearwater					Vernon	Washington	4	0	0.00		
Airport	Pinellas	2	0	0.00	Vero Beach	Indian River	373	35	9.38		
St. Petersburg	Pinellas	4,248	360	8.47	Virginia Gardens	Miami-Dade	1	0	0.00		
St. Petersburg Beach	Pinellas	200	39	19.50	Wabasso	Indian River	2	0	0.00		
Starke	Bradford	134	4	2.99	Wahneta	Polk	6	1	16.67		
Steinhatchee	Taylor	4	1	25.00	Wakulla	Wakulla	1	0	0.00		
Stetson University	Volusia	1	0	0.00	Waldo	Alachua	5	0	0.00		
Stuart	Martin	477	57	11.95	Warrington	Escambia	64	7	10.94		
Sunny Isles	Miami-Dade	177	4	2.26	Wauchula	Hardee	98	7	7.14		
Sunrise	Broward	653	33	5.05	Wausau	Washington	3	0	0.00		
Surfside	Miami-Dade	70	5	7.14	Webster	Sumter	1	0	0.00		
Sweetwater	Miami-Dade	108	3	2.78	Wellington	Palm Beach	212	14	6.60		
Tallahassee	Leon	4,601	297	6.46	West Bradenton	Manatee	659	56	8.50		
Tamarac	Broward	592	34	5.74	West Gate	Palm Beach	1	0	0.00		
Tampa	Hillsborough	10,270	768	7.48	West Hollywood	Broward	3	0	0.00		
Tampa International					West Melbourne	Brevard	121	9	7.44		
Airport	Hillsborough	56	3	5.36	West Miami	Miami-Dade	55	6	10.91		
Tarpon Springs	Pinellas	399	41	10.28	West Palm Beach	Palm Beach	1,772	155	8.75		
Tavares	Lake	115	11	9.57	West Pensacola	Escambia	53	3	5.66		
Tavernier	Monroe	54	3	5.56	West Winter Haven	Polk	1	0	0.00		
Temple Terrace	Hillsborough	166	11	6.63	Weston	Broward	247	20	8.10		
Tequesta Village	Palm Beach	19	7	36.84	Wewahitchka	Gulf	8	2	25.00		
Tice	Lee	3	2	66.67	White Springs	Hamilton	1	0	0.00		
Titusville	Brevard	367	36	9.81	Wildwood	Sumter	39	1	2.56		
Treasure Island	Pinellas	93	22	23.66	Williston	Levy	32	1	3.13		
Trenton	Gilchrist	21	0	0.00	Wilton Manors	Broward	210	32	15.24		
Tyndall AFB	Bay	1	0	0.00	Windermere	Orange	16	3	18.75		
Umatilla	Lake	19	4	21.05	Winter Garden	Orange	144	10	6.94		
University of					Winter Haven	Polk	422	37	8.77		
Central Florida	Orange	16	1	6.25	Winter Park	Orange	328	38	11.59		
University of Florida	Alachua	57	5	8.77	Winter Springs	Seminole	64	6	9.38		
University of Miami					Worthing Springs	Union	5	2	40.00		
	Miami-Dade	12	1	8.33	Yankeetown	Levy	2	0	0.00		
University of					Yulee	Nassau	18	2	11.11		
North Florida	Duval	26	0	0.00	Zephyrhills	Pasco	149	8	5.37		
University of					Zolfo Springs	Hardee	3	0	0.00		
South Florida	Hillsborough	71	1	1.41							
University of Tampa											
	Hillsborough	2	1	50.00							





**FLORIDA DEPARTMENT OF HIGHWAY SAFETY
AND MOTOR VEHICLES**

**Office of the Executive Director
Management Research and Development
Neil Kirkman Building, M.S. 04
Tallahassee FL 32399-0500**