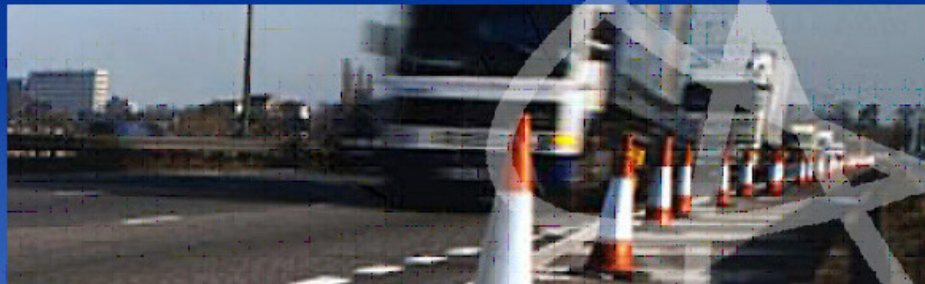




European
Road
Safety
Observatory
www.erso.eu



Annual Statistical Report 2008

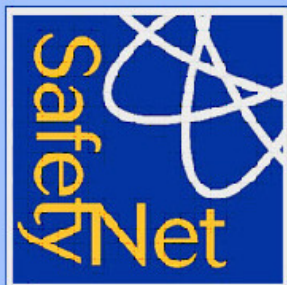
Based on data from CARE / EC

SafetyNet

Building the European Road Safety Observatory

Workpackage 1 – Task 3

Deliverable No: D 1.20



Authors:

KfV	Austria
NTUA	Greece
SWOV	The Netherlands
TRL	United Kingdom

Workpackage Leader:

NTUA	Greece
------	--------

Task Leader:

KfV	Austria
-----	---------

Contract Number:

TREN-04-FP6TR-
SI2.395465/506723

Project Number:

1.3.2

Acronym:

SAFETYNET

Version:

No5

Date of issue:

31/10/2008

CONTENTS

1	<i>Introduction</i>	3
1.1	The CARE Database	3
1.2	Note to the Reader	4
2	<i>Overview – major issues</i>	7
2.1	EU-25 – Developments (includes databases other than CARE)	7
2.2	Interesting Details	8
3	<i>Time Series – last 10 years</i>	11
3.1	General time series	11
3.2	Time series related to mode of transport	15
3.3	Time series related to person age and gender	21
4	<i>Fatalities 2006</i>	29
4.1	People involved	29
4.1.1	Age and gender of persons	29
4.1.2	Age of persons by mode of transport	30
4.2	Modes of transport	33
4.2.1	Mode of transport by age of persons	33
4.2.2	Mode of transport by type of area	38
4.3	Accident characteristics	40
4.3.1	Various periods of time (month, day of week, hour of day)	40
4.3.2	Type of area/road	47
4.3.3	Type of junction	49
4.3.4	Weather conditions	51
5	<i>Fatal accidents 2006</i>	52
5.1	Various periods of time (month, day of week, hour of day)	52
5.2	Type of area / road	54
5.3	Type of junction	55
5.4	Weather conditions	56
6	<i>Glossary</i>	57
7	<i>List of tables</i>	63
8	<i>List of figures</i>	64

1 Introduction

1.1 The CARE Database

Community database on Accidents on the Roads in Europe

Road traffic accidents in the Member States of the European Union annually claim about 43.000 lives and leave more than 1.8 million people injured, representing estimated costs of 160 billion euros. Since 1984, a large number of measures to reduce road accidents have been taken at a regional level. Along with these measures, the Council adopted a Decision on 30 November 1993 on the creation of a Community database on road accidents (93/704/EC), the CARE project.

It was commonly agreed that such a database at the Community level would make it possible to identify and quantify road safety problems, evaluate the efficiency of road safety measures, determine the relevance of Community actions and facilitate the exchange of experience in this field. After a pilot phase of about 3 years, the Council endorsed the "Report from the Commission on the progress with the project and its future prospects" (COM(97) 238 final).

CARE is a Community database on road accidents resulting in death or injury (no statistics on damage-only accidents are kept). The major difference between CARE and most other existing international databases is the high level of disaggregation, i.e. CARE is based on detailed data of individual accidents as collected by the Member States. This structure allows for maximum flexibility and potential with regard to analysing the information contained in the system and opens up a whole set of new possibilities in the field of accident analysis.

National data sets are integrated into the CARE database in their original national structure and definitions, with confidential data blanked out. However, transformation rules are implemented in the CARE database in order to increase data compatibility and thus enhance the functioning of the system.

The process of improving "homogenisation" of accident data within CARE is underway. In the meantime, the inherent incompatibility of national accident data remains a source of possible misinterpretation when performing comparative analyses at international level. Therefore, on-line access to the CARE database is currently restricted to expert users. The summary statistical tables and figures contained here provide an overview of road accident data from 1997 to 2006 (EU-15 and EU-20 without Germany). For some figures other sources than CARE have been used in order to give an overview of EU-25 road accident data.

1.2 Note to the Reader

This Annual Statistical Report provides the basic characteristics of road accidents in 19 member states of the European Union for the period 1997-2006, on the basis of data collected and processed in the CARE database, the Community Road Accident Database with disaggregate data (Council Decision EEC 93/704 final).

The period 1997-2006 has been used in order to maximize the sample of data. However, data for some countries and corresponding years were not yet available in the CARE database at the date of drafting this report. As you can see in following table, five new countries (CZ, EE, HU, MT, PL) were included in 2006. These countries were considered in the tables and figures, where no time line is used. For example if there are comparisons with the year 1997 only EU-14 (the EU-15 excluding Germany) is used.

The next table shows which data from the EU-25 are available in the CARE database (x) and used in this report .

x

Code	Country	1991-1996	1997	1998	1999	2000	2001	2002	2003	2004	2005	2006
BE	Belgium	x	x	x	x	x	x	x	x	x	x	x
CZ	Czech Republic											x
DK	Denmark	x	x	x	x	x	x	x	x	x	x	x
DE	Germany											
EE	Estonia								Test Data		x	x
EL	Greece	x	x	x	x	x	x	x	x	x	x	x
ES	Spain	x	x	x	x	x	x	x	x	x	x	x
FR	France	x	x	x	x	x	x	x	x	x	x	x
IE	Ireland	x	x	x	x	x	x	x	x			
IT	Italy	x	x	x	x	x	x	x	x	x		
CY	Cyprus											
LV	Latvia											
LT	Lithuania											
LU	Luxembourg	x	x	x	x	x	x	x				
HU	Hungary								x	x	x	x
MT	Malta										x	x
NL	Netherlands	x	x	x	x	x	x	x	x			
AT	Austria	x	x	x	x	x	x	x	x	x	x	x
PL	Poland										x	
PT	Portugal	x	x	x	x	x	x	x	x	x	x	x
SI	Slovenia											
SK	Slovakia											
FI	Finland	x	x	x	x	x	x	x	x	x	x	x
SW	Sweden	x	x	x	x	x	x	x	x	x	x	x
UK	United Kingdom (GB+NI)	x	x	x	x	x	x	x	x	x	x	only GB

The reader should be aware of the following remarks concerning the contents of this Annual Statistical Report:

- It should be taken into account that analysis and comparisons of the numbers of accidents and injuries are not always possible, as different definitions exist in each EU Member State.
- Fatality data are compatible between countries and use common definitions as a result of the CAREPLUS 1 and CAREPLUS 2* project. Corrective factors have been applied to comply with the international definition of people killed within 30 days after an accident. (http://ec.europa.eu/transport/roadsafety/road_safety_observatory/doc/care_glossary.pdf).
- On fatal accidents data, no corrective factors have been applied to comply with the international definition of persons killed within 30 days.
- Latest available data was used for all tables and figures, i.e. 2006 for all countries except LU (2002), IE and NL (2003), IT (2004) and PL and NI (2005). In time series over the past 10 years from 1997 to 2006 the new member states CZ, EE, HU, MT and PL are not considered in the total trends because data is not available before 2005 (in this regard please see also the food notes in the tables and figures).
- Minor differences in totals are due to rounding-off differences of data.
- “Unknown” values are not displayed in tables, but totals include the unknowns.
- The EU totals for all people killed are not necessarily the sum of each sub-division of these persons, given that there are no data available for all sub-divisions and all countries. Corresponding percentages refer to the available data.
- Partial or complete reproduction of these statistics is permitted if the source is mentioned and accompanied with the present remarks.
- The basic characteristics of fatal road accidents in the EU member states have been selected as those which might be useful for road accident analysis and where data are available for all or most of the EU countries (these are results of CAREPLUS project on making accident data comparable). More characteristics are available since the CAREPLUS 2 project. More precisely, the basic characteristics of fatal road accidents refer to:
 - Person class** (driver, passenger, pedestrian)
 - Person killed** (age groups and/or gender)
 - Area type** (inside or outside urban area)
 - Motorway** (yes or no)
 - Junction type** (crossroad, level crossing, not at a junction, roundabout, T or Y junction)
 - Weather conditions** (dry, fog or mist, rain, snow/sleet/hail, strong wind)
 - Modes of transport – vehicle group** (agricultural tractor, bus or coach [>8 seats], car or taxi, heavy goods vehicles, lorry under 3,5 tons, pedal cycle, moped, motorcycle, other)
 - Month** (January to December)
 - Day of the week** (Monday to Sunday)
 - Hour** (0-24)
- This report is amongst the first outcomes of the CARE database. The validation of the CARE system is not yet finished and minor amendments to the figures presented might be necessary. Comments can be addressed to safetynet@lboro.ac.uk.

* Cete-Sud Ouest (1997), A proposal for improving the comparability of road accidents within EU Member States using the CARE Database, CAREPLUS 1 Consortium, Bordeaux.

Disclaimer

The information in this document is provided as it is and no guarantee or warranty is given that the information is fit for any particular purpose. Therefore, the reader uses the information at their own risk and liability.

For more information

Further statistical information about fatalities is available from the CARE database at the Directorate-General for Energy and Transport of the European Commission, 28 Rue de Mot, B-1040 Brussels (see ec.europa.eu/transport/roadsafety/road_safety_observatory/care_reports_en.htm).

Traffic Safety Basic Fact Sheets available from the European Commission concern:

- Main Figures
- Children (Aged <16)
- Young People (Aged 16-24)
- The Elderly (Aged >64)
- Pedestrians
- Bicycles
- Motorcycle and Mopeds
- Car-Occupants
- Heavy Goods Vehicles & Buses
- Motorways
- Junctions
- Urban Areas

All these reports and more information about the integrated project "SafetyNet" which is co-financed by the European Commission, Directorate-General Energy and Transport are also available at the SafetyNet website: www.erso.eu/.

Authors:

Thomas Leitner, Christian Brandstätter, Stefan Höglinger	KfV, Austria
Niels Bos and Ellen Berends	SWOV, The Netherlands
George Yannis, Petros Evgenikos, Antonis Chaziris	NTUA, Greece
Jeremy Broughton, Brian Lawton and Louise Walter	TRL, United Kingdom

2 Overview – major issues

2.1 EU-25 – Developments (includes databases other than CARE)

Figure 1: Annual number of fatalities, injury accidents and injured people (EU-25), 1997-2006

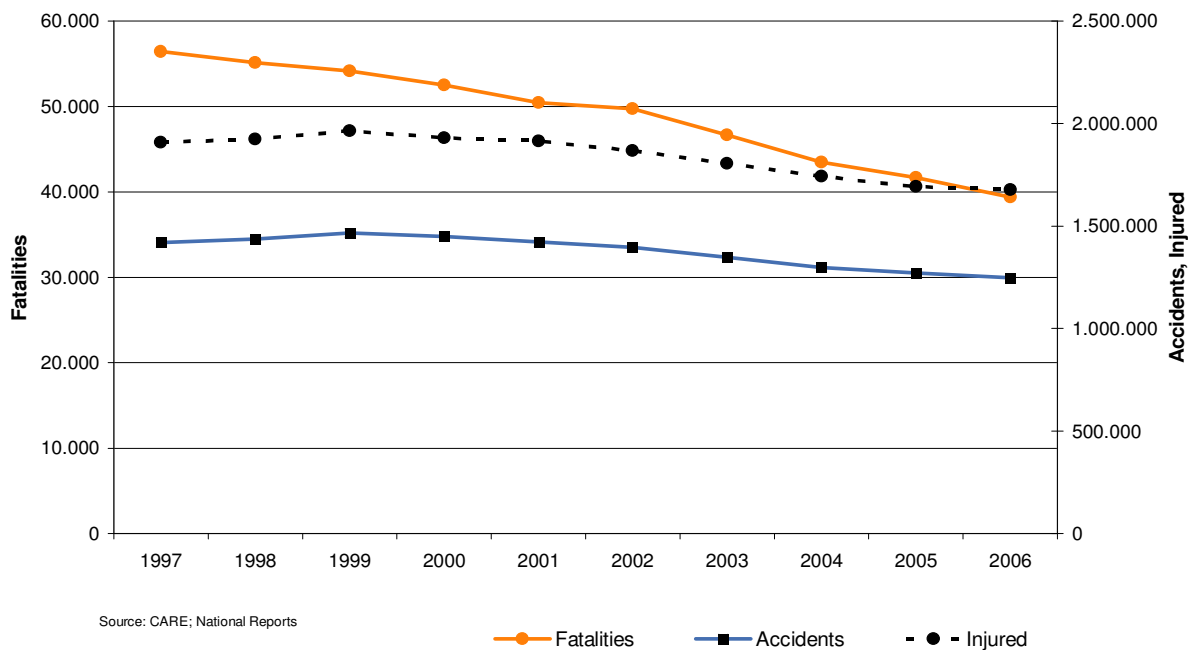
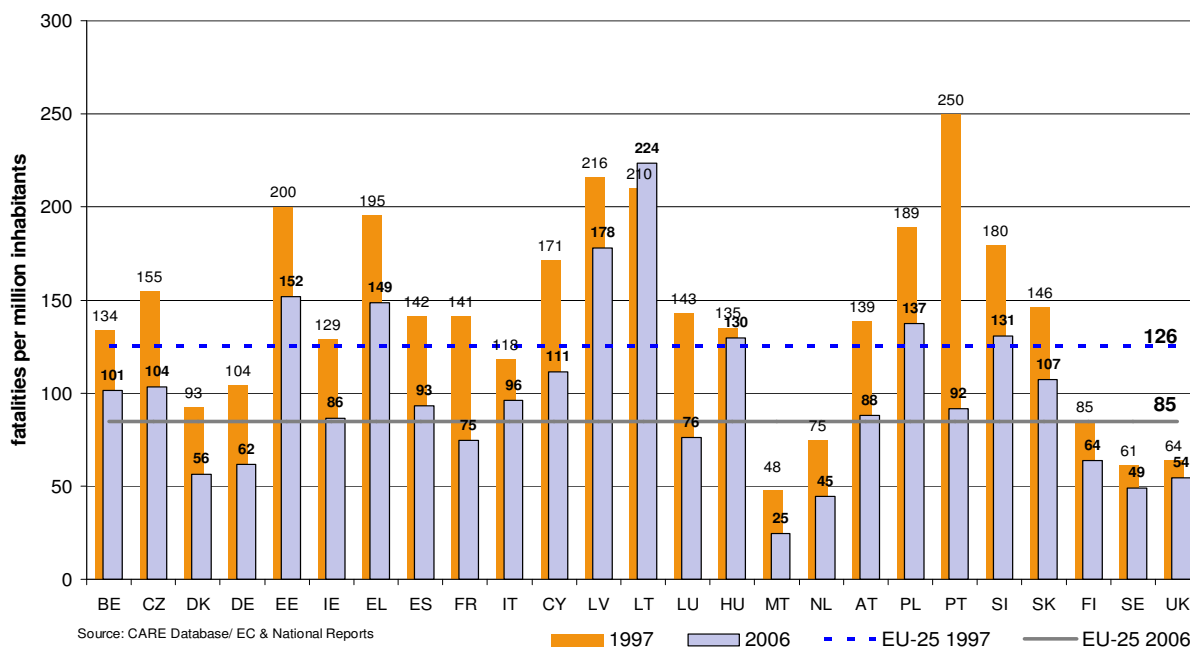


Figure 2: Fatalities per million inhabitants, 2006 compared to 1997 (EU-25)



2.2 Interesting Details

Figure 3: Share of fatalities by area type in EU-19, 2006¹

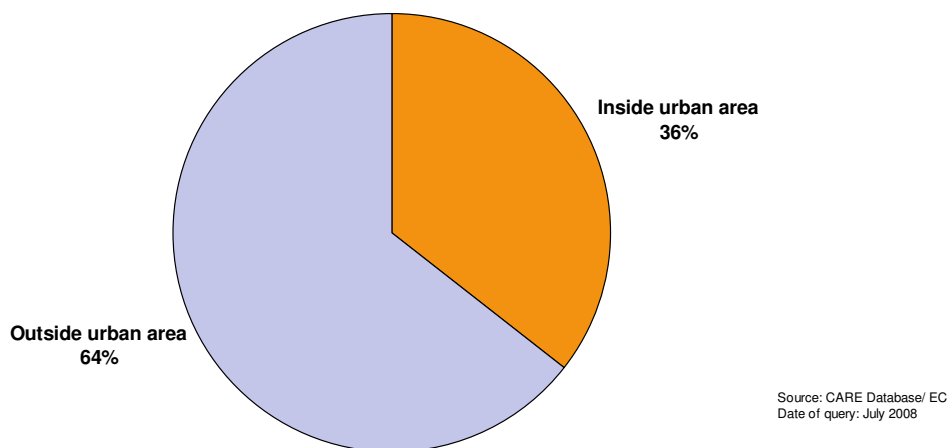
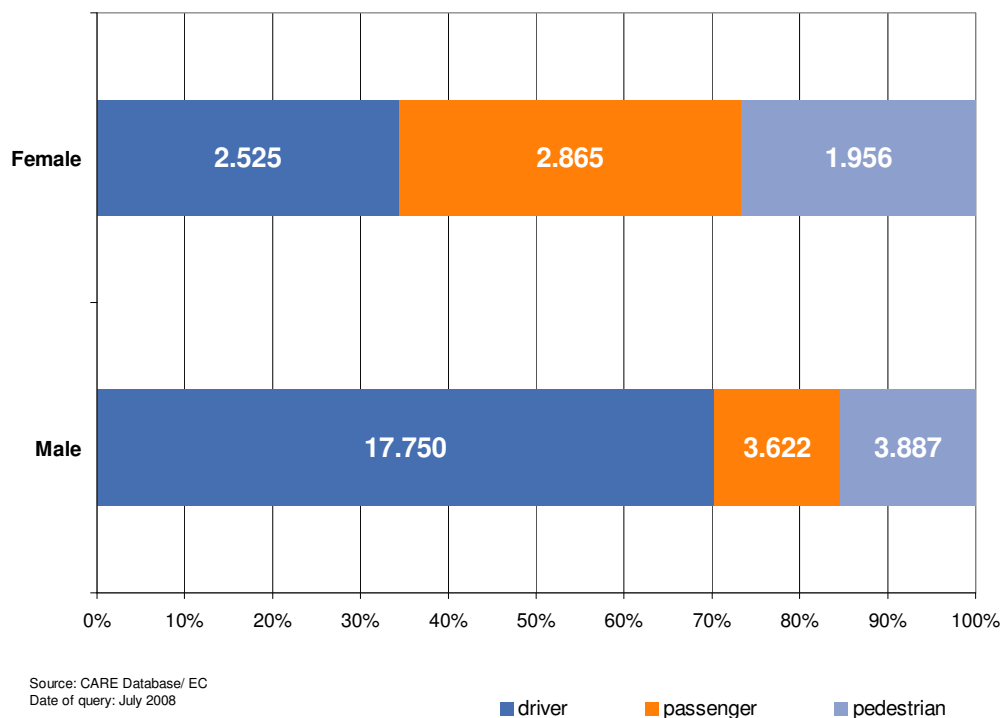
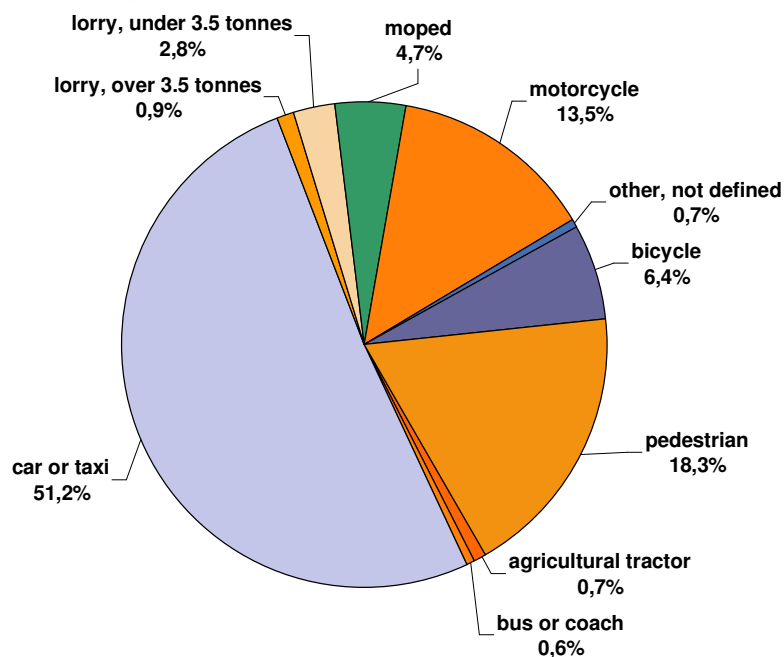


Figure 4: Distribution of male and female fatalities by person class, 2006¹



¹ Using latest data available, except LU (2002), IE and NL (2003), IT (2004), PL (2005) and UK (2006 for GB, 2005 for NI)

Figure 5: Distribution of fatalities by mode of transport, 2006¹



Source: CARE Database/ EC
Date of query: July 2008

Figure 6: Fatalities of children per million inhabitants (aged 0-14 years), 2006

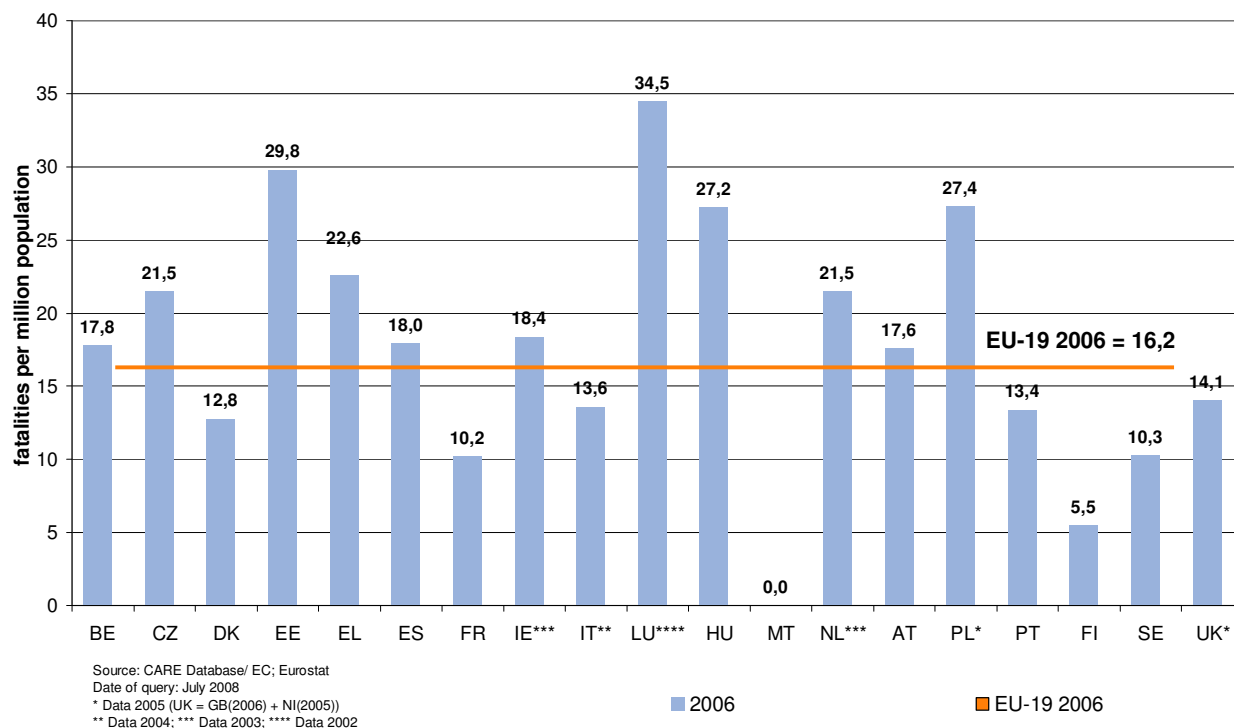
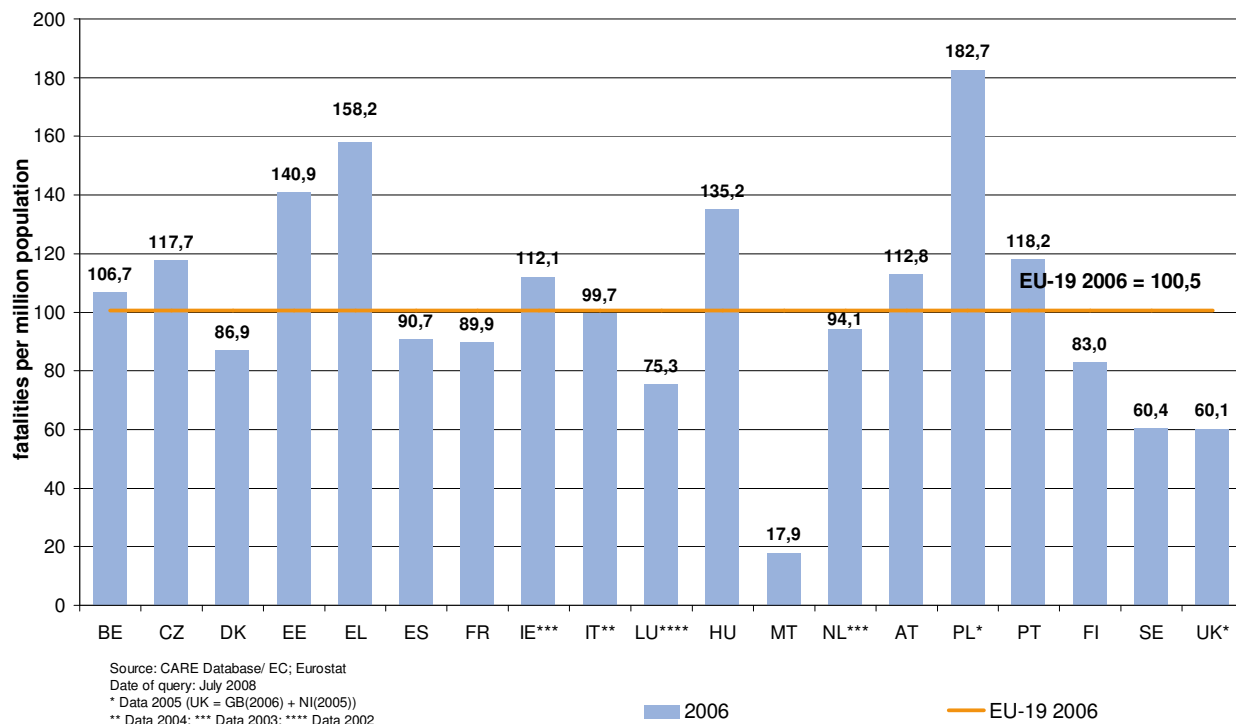


Figure 7: Fatalities of seniors per million inhabitants (aged 65+), 2006



3 Time Series – last 10 years

3.1 General time series

Figure 8: Percentage change in number of fatalities and injury accidents by country (2006¹ compared to 1997)

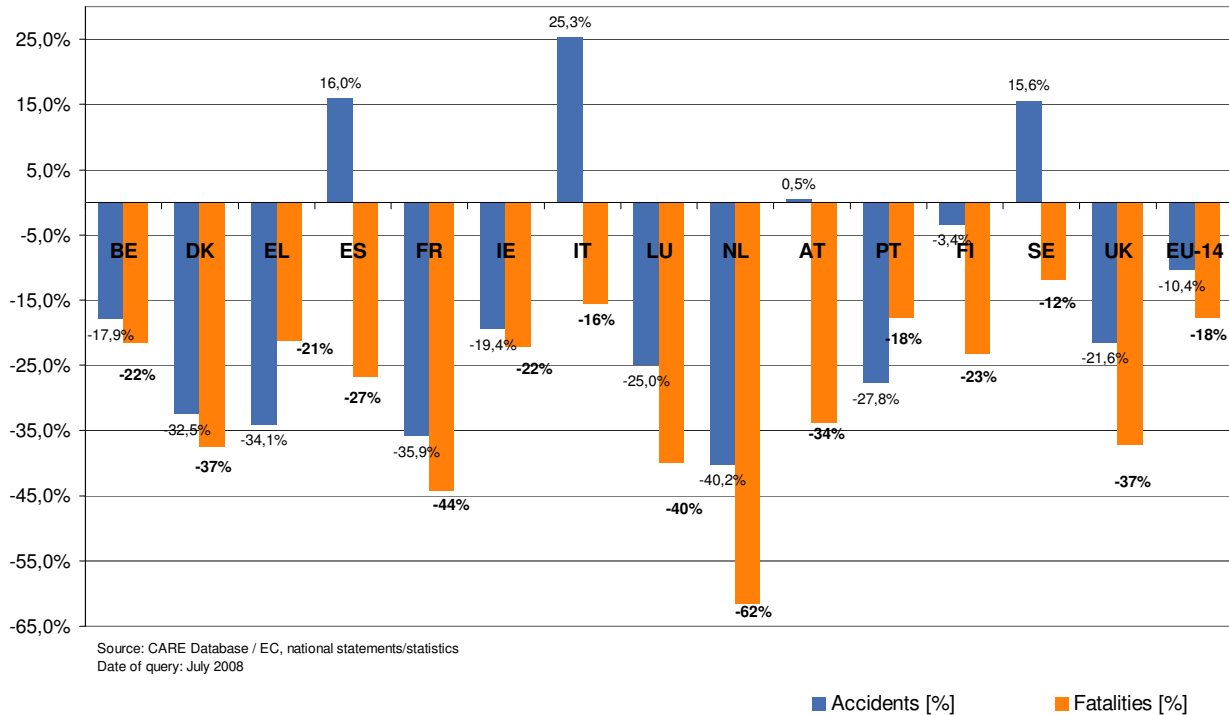


Table 1: Annual number of injury accidents by country, 1997-2006

	1997	1998	1999	2000	2001	2002	2003	2004	2005	2006
BE	50.078	51.167	51.601	49.065	47.444	47.444	43.693	43.565	40.366	41.114
CZ	-	-	-	-	-	-	-	-	-	22.115
DK	8.004	7.556	7.605	7.346	6.856	7.121	6.749	6.209	5.413	5.403
EE	-	-	-	-	-	-	-	-	2.341	2.585
EL	24.295	24.819	24.231	23.001	19.671	16.809	15.751	15.514	16.914	16.019
ES	86.062	97.570	97.811	101.729	100.393	98.433	99.987	94.009	91.187	99.779
FR	125.202	124.387	124.524	121.223	116.745	105.470	90.220	85.390	84.525	80.309
IE	8.496	8.239	7.806	7.749	6.909	6.625	5.983	5.781	5.586	6.846
IT	190.031	204.615	225.646	229.034	235.409	239.354	231.740	224.553	225.078	238.124
LU	1.016	1.058	1.076	899	772	769	664	692	708	762
HU	-	-	-	-	-	-	19.976	20.957	20.777	20.977
MT	-	-	-	-	-	-	-	-	848	841
NL	41.036	41.299	42.271	37.947	35.313	33.538	31.635	27.760	27.013	24.527
AT	39.695	39.225	42.348	42.126	43.073	43.175	43.423	42.657	40.896	39.884
PL	-	-	-	-	-	-	-	-	48.100	46.876
PT	49.417	49.357	48.508	44.463	42.521	42.219	41.495	38.930	37.066	35.680
FI	6.980	6.902	6.997	6.633	6.451	6.196	6.907	6.767	7.020	6.740
SE	15.752	15.514	15.834	15.770	15.796	16.947	18.365	18.029	18.094	18.118
UK	247.479	246.410	242.610	242.117	236.461	234.247	220.079	213.043	203.712	194.161
EU-14 ²	893.543	918.118	938.868	929.102	913.814	898.347 ¹	856.691 ¹	822.899 ¹	803.578 ¹	807.466 ¹
Yearly Change	-	2,0%	1,2%	-0,6%	-1,9%	-1,3%	-4,3%	-3,5%	-2,3%	0,5%

DG TREN

Date of query: July 2008

¹ Using latest data available, i.e. 2006 for all countries except LU (2002), IE and NL (2003), IT (2004), PL (2005) and UK (2006 for GB, 2005 for NI).

² The data from CZ, EE, HU, MT and PL are not considered



Figure 9: Relative evolution of annual number of injury accidents by country (BE – IT), 1997-2006¹

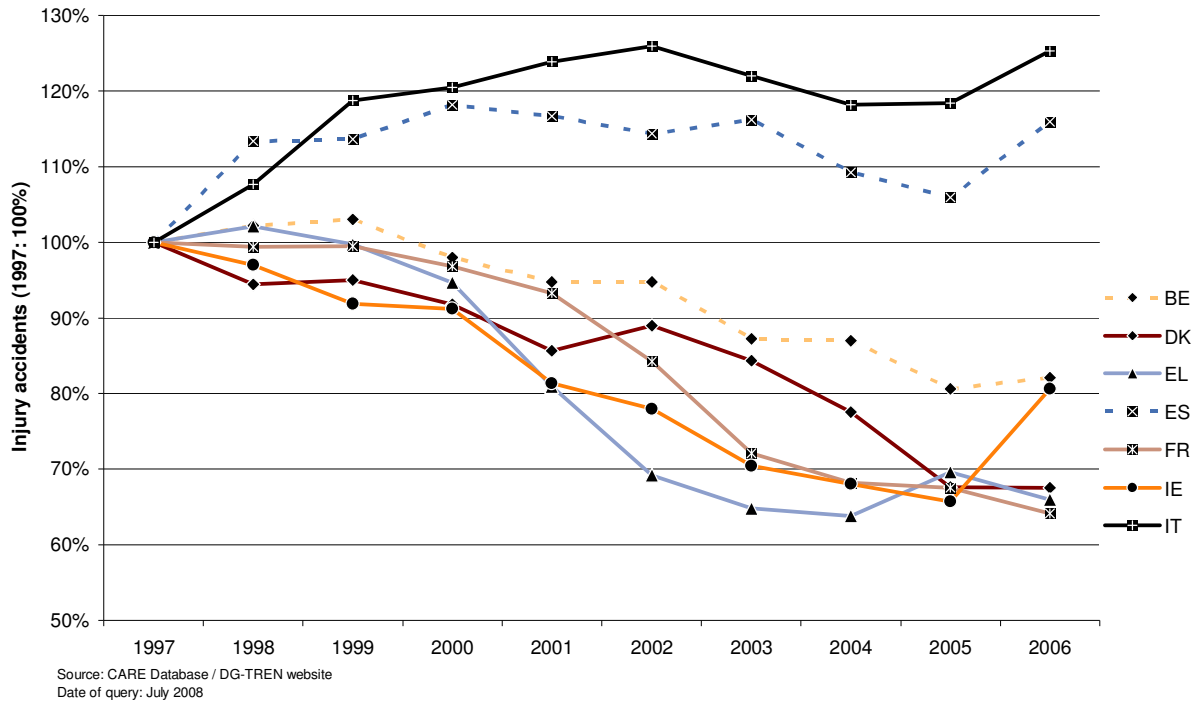


Figure 10: Relative evolution of annual number of injury accidents by country (LU-UK), 1997-2006¹

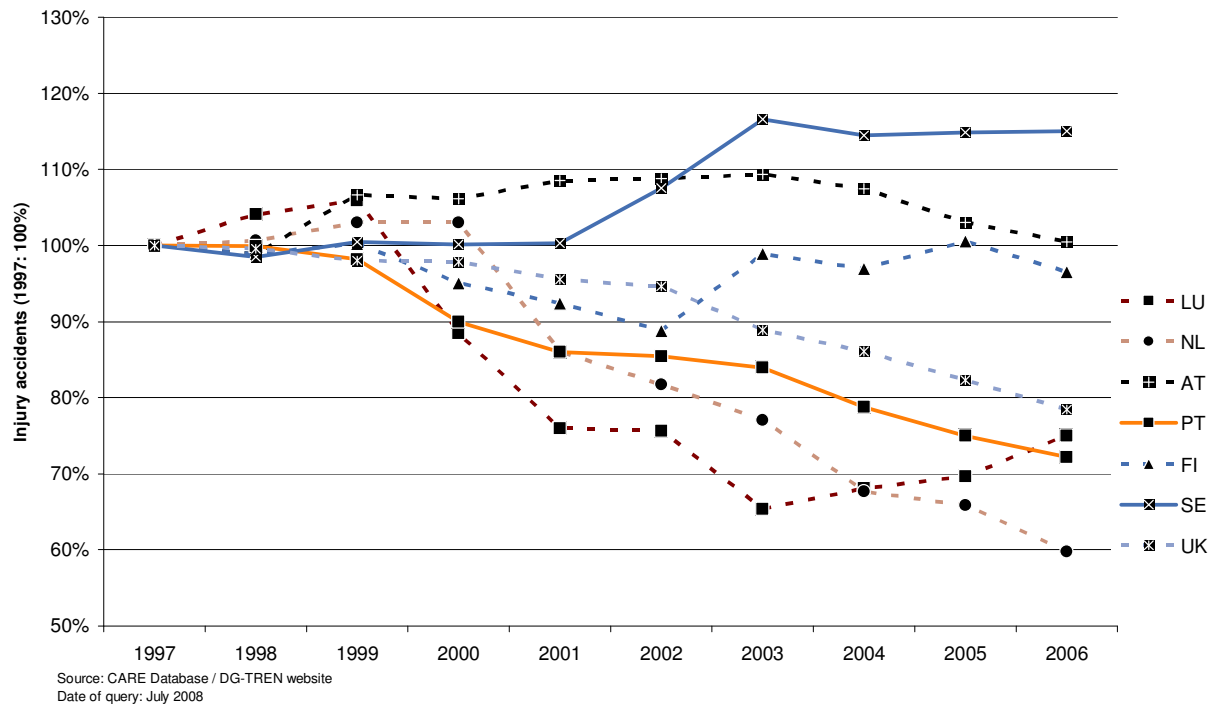


Table 2: Annual number of fatalities by country, 1997-2006

	1997	1998	1999	2000	2001	2002	2003	2004	2005	2006
BE	1.364	1.500	1.397	1.470	1.486	1.306	1.213	1.162	1.089	1.069
CZ	-	-	-	-	-	-	-	-	-	1.063
DK	489	499	514	498	431	463	432	369	331	306
EE	-	-	-	-	-	-	-	-	170	204
EL	2.105	2.182	2.116	2.037	1.880	1.634	1.605	1.670	1.658	1.657
ES	5.604	5.957	5.738	5.777	5.516	5.347	5.400	4.741	4.442	4.104
FR	8.444	8.918	8.487	8.079	8.160	7.655	6.058	5.530	5.318	4.709
IE	473	458	414	418	412	378	337	-	-	-
IT	6.713	6.314	6.688	6.649	6.691	6.739	6.065	5.625	-	-
LU	60	57	58	76	70	62	-	-	-	-
HU	-	-	-	-	-	-	1.326	1.296	1.278	1.303
MT	-	-	-	-	-	-	-	-	17	11
NL	1.163	1.066	1.090	1.082	993	987	1.028	-	-	-
AT	1.105	963	1.079	976	958	956	931	878	768	730
PL	-	-	-	-	-	-	-	-	5.444	-
PT	2.521	2.126	1.995	1.857	1.671	1.675	1.546	1.294	1.247	969
FI	438	400	431	396	433	415	379	375	379	336
SE	541	531	580	591	583	560	529	480	440	445
UK	3.743	3.581	3.564	3.580	3.598	3.581	3.658	3.368	3.336	3307 ¹
EU-14 ²	34.763	34.552	34.151	33.486	32.882	31.758	29.242 ¹	26.919 ¹	26.060 ¹	24.684 ¹
Yearly Change		-0,6%	-1,2%	-1,9%	-1,8%	-3,4%	-7,9%	-7,9%	-3,2%	-5,3%

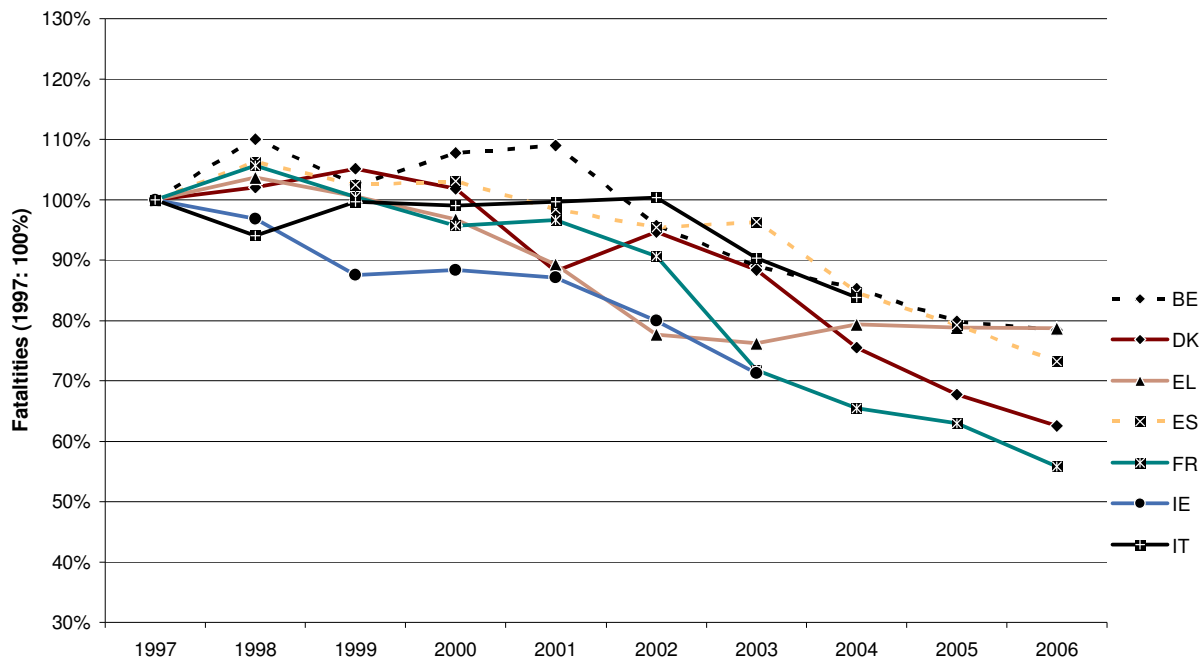
Source: CARE Database / EC

Date of query: August 2008

¹ Using latest data available, i.e. 2006 for all countries except LU (2002), IE and NL (2003), IT (2004), PL (2005) and UK (2006 for GB, 2005 for NI).

² The data from CZ, EE, HU, MT and PL are not considered

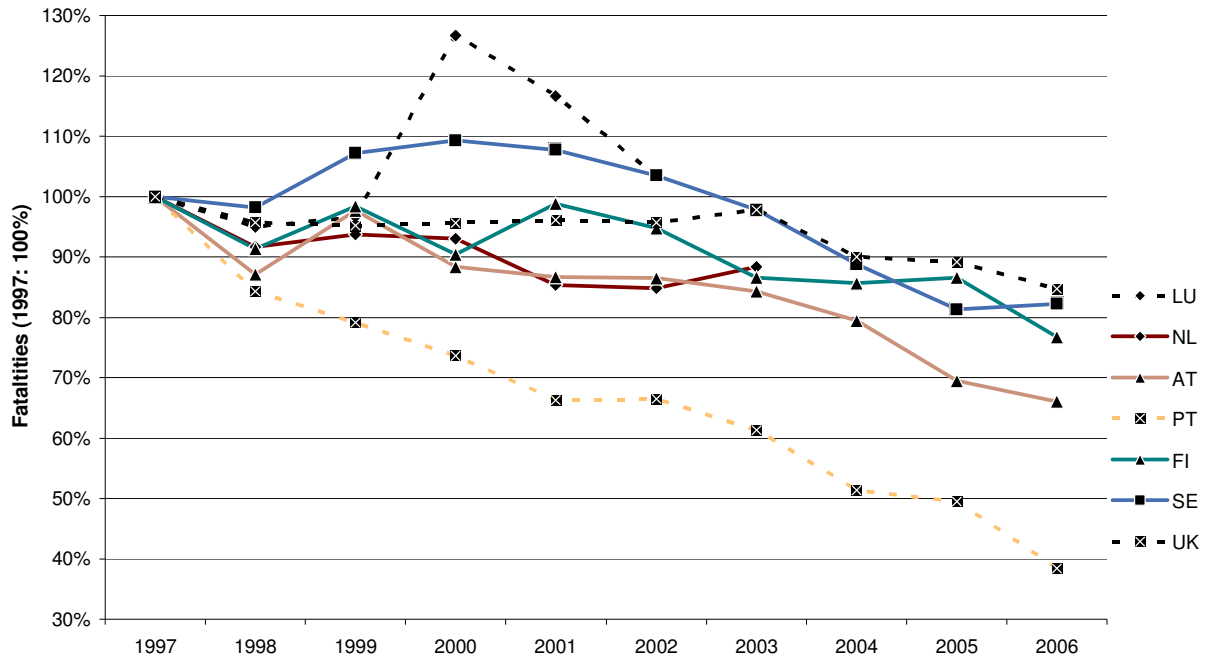
Figure 11: Relative evolution of annual number of fatalities by country (BE-IT), 1997-2006¹



Source: CARE database / EC

Date of query: July 2008

Figure 12: Relative evolution of annual number of fatalities by country (LU-UK), 1997-2006¹



Source: CARE database / EC
Date of query: July 2008

Table 3: Annual number of fatal accidents by country, 1997-2006**

	1997	1998	1999	2000	2001	2002	2003	2004	2005	2006
BE	1.255	1.345	1.299	1.356	1.378	1.217	1.142	1.096	997	1.001
CZ	-	-	-	-	-	-	-	-	-	853
DK	461	462	467	436	354	371	382	341	305	284
EE	-	-	-	-	-	-	-	-	151	183
EL	1.837	1.921	1.876	1.803	1.669	1.438	1.400	1.484	1.482	1.501
ES	4.062	4.319	4.239	4.372	4.170	4.031	4.084	3.643	3.377	3.626
FR	7.130	7.514	7.185	6.811	6.920	6.549	5.168	4.766	4.857	4.326
IE	424	408	373	362	360	346	301	-	-	-
IT	5.605	5.304	6.022	6.055	6.074	6.099	5.463	5.082	-	-
LU	57	56	53	68	65	52	-	-	-	-
HU	-	-	-	-	-	-	1.135	1.168	1.139	1.173
MT	-	-	-	-	-	-	-	-	12	11
NL	1.076	988	1.028	1.006	932	913	940	-	-	-
AT	1.005	865	947	889	861	873	848	818	712	664
PL	-	-	-	-	-	-	-	-	4.878	-
PT	1.732	1.647	1.582	1.450	1.316	1.323	1.222	1.024	988	786
FI	391	367	391	354	386	367	346	323	343	324
SE	493	490	516	535	511	490	460	430	406	404
UK	3.434	3.276	3.267	3.257	3.313	3.260	3.375	3.106	3.040	3.053 ¹
EU-14 ²	28.962	28.962	29.245	28.754	28.309	27.329	25.183 ¹	23.406 ¹	22.882 ¹	22.344 ¹
Yearly Change		0,0%	1,0%	-1,7%	-1,5%	-3,5%	-7,9%	-7,1%	-2,2%	-2,4%

Source: CARE Database / EC
Date of query: August 2008

¹ Using latest data available, i.e. 2006 for all countries except LU (2002), IE and NL (2003), IT (2004), PL (2005) and UK (2006 for GB, 2005 for NI).

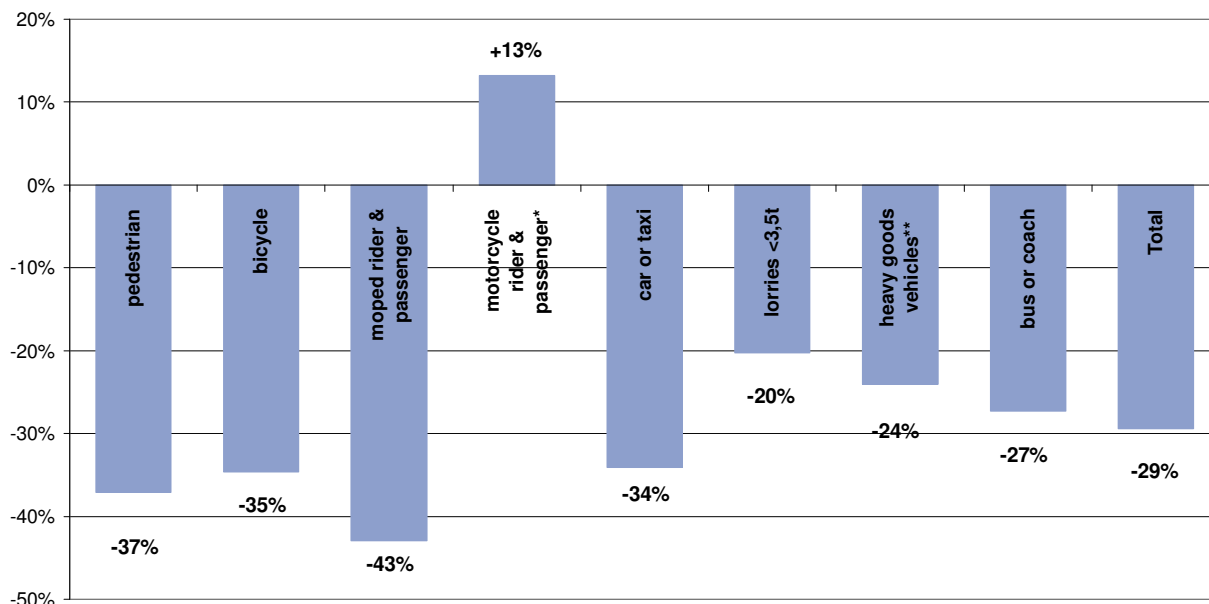
² The data from CZ, EE, HU, MT and PL are not considered

³ No correction factor was applied to countries that do not use the 30 day definition: ES (1997 till 2005), FR (1997 till 2004), IT (1997 till 1998), PT (all years).

** Note that numbers have not been corrected for 30-day definition for EL, ES, FR, IT and PT

3.2 Time series related to mode of transport

Figure 13: Percentage change in number of fatalities by mode of transport in EU-14 (2006¹ compared to 1997)



Source: CARE Database/ EC

Date of query: July 2008

* motorcycles including mopeds (IE and UK), ** heavy goods vehicles include lorries < 3,5t (IT and LU)

Table 4: Annual number of pedestrian fatalities by country, 1997-2006

	1997	1998	1999	2000	2001	2002	2003	2004	2005	2006
BE	142	162	154	142	158	127	113	101	108	122
CZ	-	-	-	-	-	-	-	-	-	202
DK	87	73	82	99	49	63	49	43	44	60
EE	-	-	-	-	-	-	-	-	50	64
EL	409	417	399	375	338	279	257	293	234	267
ES	967	996	906	899	846	776	786	683	680	613
FR	982	1.044	932	838	822	866	626	581	635	535
IE	130	114	92	85	89	86	64	-	-	-
IT	893	844	847	897	932	1.163	781	710	-	-
LU	8	3	2	11	11	6	-	-	-	-
HU	-	-	-	-	-	-	299	326	289	296
MT	-	-	-	-	-	-	-	-	6	4
NL	119	110	111	106	106	97	97	-	-	-
AT	156	165	182	140	117	160	132	132	97	110
PL	-	-	-	-	-	-	-	-	1.756	-
PT	549	406	393	384	337	339	280	233	214	156
FI	69	62	67	62	62	40	59	49	45	49
SE	72	69	86	73	87	58	55	67	50	55
UK	1.010	946	909	889	858	808	802	694	699	703 ¹
EU-14 ²	5.592	5.411	5.163	5.000	4.813	4.868	4.108 ¹	3.753 ¹	3.683 ¹	3.547 ¹
Yearly Change		-3,2%	-4,6%	-3,2%	-3,7%	1,1%	-15,6%	-8,6%	-1,9%	-3,7%
Total - all users ²	34.763	34.552	34.151	33.486	32.882	31.758	29.242 ¹	26.919 ¹	26.060 ¹	24.684 ¹
% pedestrians	16,1%	15,7%	15,1%	14,9%	14,6%	15,3%	14,0%	13,9%	14,1%	14,4%

Source: CARE Database / EC

Date of query: August 2008

¹ Using latest data available, i.e. 2006 for all countries except LU (2002), IE and NL (2003), IT (2004), PL (2005) and UK (2006 for GB, 2005 for NI).

² The data from CZ, EE, HU, MT and PL are not considered

Table 5: Annual number of bicycle fatalities by country (includes all riders and passengers of pedal cycles), 1997-2006

	1997	1998	1999	2000	2001	2002	2003	2004	2005	2006
BE	122	135	122	134	130	105	110	79	71	92
CZ	-	-	-	-	-	-	-	-	-	110
DK	65	58	59	58	56	52	47	53	41	31
EE	-	-	-	-	-	-	-	-	7	13
EL	32	34	23	22	29	14	21	24	18	21
ES	116	114	119	84	100	96	78	88	82	75
FR	348	318	324	270	256	223	201	177	180	181
IE	24	21	14	10	12	18	10	-	-	-
IT	428	364	402	381	331	314	326	296	-	-
LU	1	1	0	1	1	1	-	-	-	-
HU	-	-	-	-	-	-	178	183	152	153
MT	-	-	-	-	-	-	-	-	0	0
NL	242	194	194	198	195	169	188	-	-	-
AT	66	57	68	62	55	80	56	58	47	48
PL	-	-	-	-	-	-	-	-	603	-
PT	75	74	41	56	50	58	63	47	48	40
FI	61	54	63	53	59	53	39	26	43	29
SE	42	58	45	47	43	42	35	27	38	26
UK	187	165	173	131	140	133	116	136	152	150 ¹
EU-14 ²	1.809	1.648	1.648	1.506	1.457	1.358	1.291 ¹	1.209 ¹	1.214 ¹	1.188 ¹
Yearly Change		-8,9%	0,0%	-8,6%	-3,3%	-6,8%	-5,0%	-6,3%	0,4%	-2,2%
Total - all users ²	34.763	34.552	34.151	33.486	32.882	31.758	29.242 ¹	26.919 ¹	26.060 ¹	24.684 ¹
% pedal cyclists	5,2%	4,8%	4,8%	4,5%	4,4%	4,3%	4,4%	4,5%	4,7%	4,8%

Source: CARE Database / EC

Date of query: August 2008

¹ Using latest data available, i.e. 2006 for all countries except LU (2002), IE and NL (2003), IT (2004), PL (2005) and UK (2006 for GB, 2005 for NI).

² The data from CZ, EE, HU, MT and PL are not considered

Table 6: Annual number of moped rider & passenger fatalities by country, 1997-2006

	1997	1998	1999	2000	2001	2002	2003	2004	2005	2006
BE	68	78	56	66	63	68	45	33	30	36
CZ	-	-	-	-	-	-	-	-	-	3
DK	27	39	41	47	43	38	43	46	29	24
EE	-	-	-	-	-	-	-	-	2	2
EL	114	114	108	90	77	55	53	55	58	57
ES	440	506	515	474	461	383	391	361	312	308
FR	498	442	492	456	450	387	393	339	356	317
IE*	0	0	0	0	0	0	0	-	-	-
IT	702	675	611	551	508	420	461	388	-	-
LU	1	1	0	0	0	0	-	-	-	-
HU	-	-	-	-	-	-	36	22	40	42
MT*	-	-	-	-	-	-	-	-	0	0
NL	88	89	107	107	78	98	94	-	-	-
AT	58	33	48	44	37	46	47	44	41	39
PL	-	-	-	-	-	-	-	-	53	-
PT	439	316	253	225	184	145	157	121	106	97
FI	16	16	8	9	7	7	12	14	4	13
SE	13	12	12	10	9	12	9	18	8	15
UK**	17	10	17	15	14	21	25	26	23	29 ¹
EU-14 ²	2.481	2.331	2.267	2.093	1.931	1.680	1.730 ¹	1.539 ¹	1.449 ¹	1.417 ¹
Yearly Change		-6,0%	-2,7%	-7,7%	-7,7%	-13,0%	3,0%	-11,1%	-5,8%	-2,2%
Total - all users ²	34.763	34.552	34.151	33.486	32.882	31.758	29.242 ¹	26.919 ¹	26.060 ¹	24.684 ¹
% mopeds	7,1%	6,7%	6,6%	6,3%	5,9%	5,3%	5,9%	5,7%	5,6%	5,7%

Source: CARE Database / EC

Date of query: August 2008

¹ Using latest data available, i.e. 2006 for all countries except LU (2002), IE and NL (2003), IT (2004), PL (2005) and UK (2006 for GB, 2005 for NI).

² The data from CZ, EE, HU, MT and PL are not considered

* Ireland and Malta do not separate Mopeds and Motocycles; Moped riders are counted in the Motorcycle table (see Table 7).

** Moped fatalities in the United Kingdom are underestimated because of scooters below 50cc being counted to motorcycles.

Table 7: Annual number of motorcycle rider & passenger fatalities by country, 1997-2006

	1997	1998	1999	2000	2001	2002	2003	2004	2005	2006
BE	125	121	142	118	147	158	124	120	123	130
CZ	-	-	-	-	-	-	-	-	-	113
DK	19	21	26	24	12	24	25	23	16	21
EE	-	-	-	-	-	-	-	-	5	5
EL	392	455	453	406	426	341	310	379	399	440
ES	459	421	387	392	370	401	367	399	472	480
FR	920	986	983	964	1.092	1.063	883	866	892	789
IE*	68	37	43	40	50	44	55	-	-	-
IT	520	516	569	728	807	869	980	1.070	-	-
LU	2	6	5	8	6	0	-	-	-	-
HU	-	-	-	-	-	-	66	72	100	89
MT*	-	-	-	-	-	-	-	-	3	2
NL	92	76	75	89	76	93	95	-	-	-
AT	111	87	103	112	107	89	109	98	98	95
PL	-	-	-	-	-	-	-	-	157	-
PT	241	241	253	212	229	225	213	181	188	137
FI	8	9	13	10	16	22	23	22	32	26
SE	36	40	36	39	38	37	47	56	46	55
UK**	508	499	539	597	580	607	690	581	561	584 ¹
EU-14 ²	3.500	3.515	3.627	3.739	3.956	3.973	3.921 ¹	3.945 ¹	4.047 ¹	3.977 ¹
Yearly Change		0,4%	3,2%	3,1%	5,8%	0,4%	-1,3%	0,6%	2,6%	-1,7%
Total - all users ²	34.763	34.552	34.151	33.486	32.882	31.758	29.242 ¹	26.919 ¹	26.060 ¹	24.684 ¹
% motorcyclists	10,1%	10,2%	10,6%	11,2%	12,0%	12,5%	13,4%	14,7%	15,5%	16,1%

Source: CARE Database / EC
Date of query: August 2008

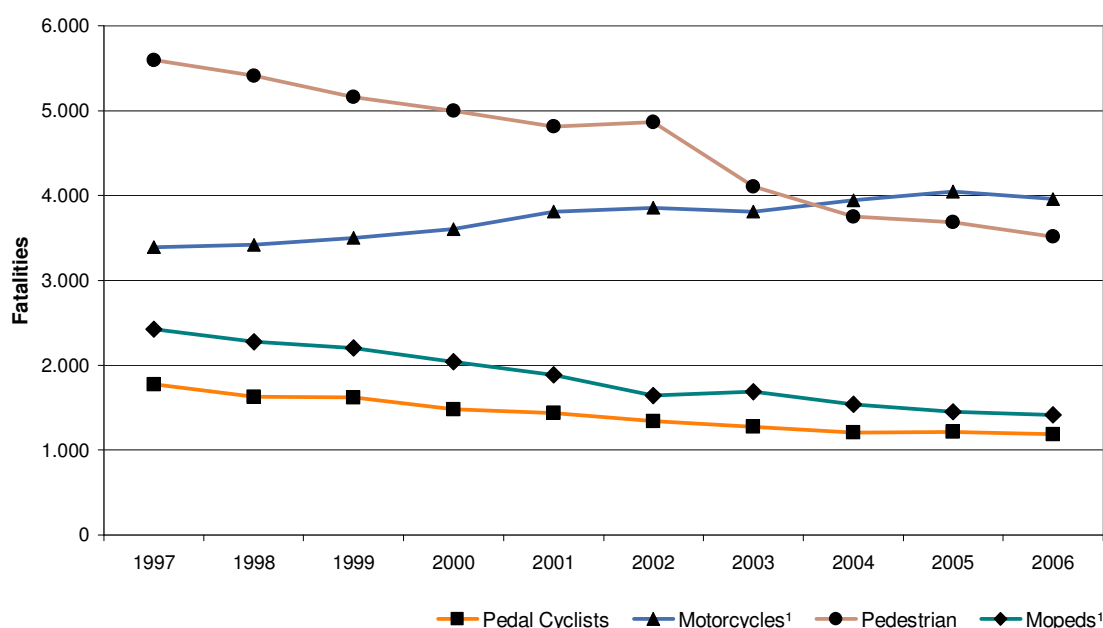
¹ Using latest data available, i.e. 2006 for all countries except LU (2002), IE and NL (2003), IT (2004), PL (2005) and UK (2006 for GB, 2005 for NI).

² The data from CZ, EE, HU, MT and PL are not considered

* Ireland and Malta do not separate Mopeds and Mobrocycles; Moped riders are counted as "Motorcyclists".

**In the United Kingdom scooters below 50cc are counted to mobrocycles.

Figure 14: Annual number of fatalities by mode of transport (in which the fatality was travelling, includes driver & passenger), EU-14, 1997-2006



Source: CARE Database / EC
Date of query: July 2008

* Data of the last available year were used when calculating EU-14 totals for IE (2003), LU (2002), NL (2003) and IT (2004)

¹ IE and UK: motorcycles including mopeds (motorcycles and mopeds are not counted separately)

Table 8: Annual number of fatalities in accidents involving cars or taxis by country (Attention: fatalities in cars or taxis plus all opponents fatalities), 1997-2006

	1997	1998	1999	2000	2001	2002	2003	2004	2005	2006
BE	1.127	1.244	1.134	1.219	1.223	1.075	925	825	827	798
CZ	-	-	-	-	-	-	-	-	-	787
DK	363	385	386	360	334	342	314	262	248	223
EE	-	-	-	-	-	-	-	-	132	167
EL	1.365	1.424	1.387	1.376	1.248	1.144	1.108	1.168	1.155	1.141
ES	4.306	4.632	4.458	4.527	4.328	4.244	4.363	3.659	3.369	2.990
FR	7.128	7.588	7.236	6.906	6.890	6.445	4.981	4.526	4.310	3.658
IE	341	344	325	352	318	294	246	-	-	-
IT	5.562	5.218	5.471	5.424	5.442	5.475	4.743	4.392	-	-
LU*	53	49	53	67	63	58	-	-	-	-
HU	-	-	-	-	-	-	925	991	987	1.010
MT	-	-	-	-	-	-	-	-	8	11
NL	855	803	769	764	707	721	697	-	-	-
AT	882	766	855	724	731	749	713	677	593	531
PL	-	-	-	-	-	-	-	-	4.366	-
PT	1.785	1.570	1.313	1.212	1.034	1.104	999	833	767	588
FI	332	317	324	302	331	320	282	274	302	259
SE	444	424	481	480	467	463	429	392	348	345
UK	3.105	2.950	2.911	2.874	2.863	2.889	2.946	2.737	2.739	2.679 ¹
EU-14 ²	27.648	27.714	27.103	26.587	25.979	25.323	22.804 ¹	20.746 ¹	20.051 ¹	18.605 ¹
Yearly Change		0,2%	-2,2%	-1,9%	-2,3%	-2,5%	-9,9%	-9,0%	-3,4%	-7,2%
Total - all users ²	34.763	34.552	34.151	33.486	32.882	31.758	29.242 ¹	26.919 ¹	26.060 ¹	24.684 ¹
% car or taxi	79,5%	80,2%	79,4%	79,4%	79,0%	79,7%	78,0%	77,1%	76,9%	75,4%

Source: CARE Database / EC
Date of query: August 2008

¹ Using latest data available, i.e. 2006 for all countries except LU (2002), IE and NL (2003), IT (2004), PL (2005) and UK (2006 for GB, 2005 for NI).

² The data from CZ, EE, HU, MT and PL are not considered

* Including data on lorries <3,5t

Table 9: Annual number of fatalities in accidents involving heavy goods vehicles >3,5t by country (Attention: fatalities in heavy goods vehicles plus all opponents fatalities), 1997-2006

	1997	1998	1999	2000	2001	2002	2003	2004	2005	2006
BE	195	228	193	204	193	178	136	143	161	133
CZ	-	-	-	-	-	-	-	-	-	215
DK	93	88	86	97	78	80	69	65	79	49
EE	-	-	-	-	-	-	-	-	50	37
EL	242	277	268	205	220	219	217	181	158	167
ES	888	959	905	920	803	860	834	766	714	664
FR	1.113	1.164	1.090	1.051	1.057	988	758	727	726	683
IE	85	63	61	67	70	42	54	-	-	-
IT	476	421	562	582	411	359	358	336	-	-
LU	6	7	3	5	6	12	-	-	-	-
HU	-	-	-	-	-	-	115	264	251	239
MT	-	-	-	-	-	-	-	-	0	1
NL	177	140	175	168	169	129	158	-	-	-
AT	150	145	177	143	122	143	140	144	126	120
PL*	-	-	-	-	-	-	-	-	1.425	-
PT	356	219	296	284	197	214	213	187	163	130
FI	112	88	121	77	118	105	97	107	92	82
SE	97	117	93	119	118	135	92	59	61	83
UK	554	605	641	581	607	561	548	478	510	443 ¹
EU-14 ²	4.544	4.521	4.671	4.503	4.169	4.026	3.686 ¹	3.417 ¹	3.350 ¹	3.114 ¹
Yearly Change		-0,5%	3,3%	-3,6%	-7,4%	-3,4%	-8,4%	-7,3%	-2,0%	-7,0%
Total - all users ²	34.763	34.552	34.151	33.486	32.882	31.758	29.242 ¹	26.919 ¹	26.060 ¹	24.684 ¹
% HGV	13,1%	13,1%	13,7%	13,4%	12,7%	12,7%	12,6%	12,7%	12,9%	12,6%

Source: CARE Database / EC

Date of query: August 2008

¹ Using latest data available, i.e. 2006 for all countries except LU (2002), IE and NL (2003), IT (2004), PL (2005) and UK (2006 for GB, 2005 for NI).

² The data from CZ, EE, HU, MT and PL are not considered

* Data on lorries <3,5t included in HGV

Table 10: Annual number of fatalities in accidents involving lorries <3,5t by country (Attention: fatalities in lorries <3,5t plus all opponents fatalities), 1997-2006

	1996	1997	1998	1999	2000	2001	2002	2003	2004	2005
BE	92	98	122	128	116	113	78	83	97	95
CZ	-	-	-	-	-	-	-	-	-	92
DK	87	89	93	75	75	72	79	43	53	42
EE	-	-	-	-	-	-	-	-	0	1
EL	342	301	289	330	261	245	223	220	219	198
ES	839	846	783	776	796	783	746	706	644	654
FR	433	482	479	324	369	353	304	234	203	391
IE	53	63	40	50	55	48	43	-	-	-
IT	407	361	468	360	476	428	337	286	-	-
LU*	0	0	0	0	0	0	0	-	-	-
HU	-	-	-	-	-	-	119	134	141	136
MT	-	-	-	-	-	-	-	-	8	1
NL	152	117	147	135	136	121	169	-	-	-
AT	57	55	52	62	67	69	68	56	52	39
PL**	-	-	-	-	-	-	-	-	0	-
PT	371	195	422	389	407	365	357	275	286	252
FI	58	29	39	47	29	36	45	33	33	14
SE	39	27	30	45	38	32	25	19	25	32
UK	306	310	284	314	332	323	335	297	288	296 ¹
EU-14 ²	3.236	2.973	3.248	3.035	3.157	2.988	2.809 ¹	2.464 ¹	2.398 ¹	2.511 ¹
Yearly Change		-8,1%	9,2%	-6,6%	4,0%	-5,4%	-6,0%	-12,3%	-2,7%	4,7%
Total - all users ²	34.763	34.552	34.151	33.486	32.882	31.758	29.242 ¹	26.919 ¹	26.060 ¹	24.684 ¹
% lorries < 3.5t	9,3%	8,6%	9,5%	9,1%	9,6%	9,4%	9,6%	9,2%	9,2%	10,2%

Source: CARE Database / EC
Date of query: August 2008

¹ Using latest data available, i.e. 2006 for all countries except LU (2002), IE and NL (2003), IT (2004), PL (2005) and UK (2006 for GB, 2005 for NI).

² The data from CZ, EE, HU, MT and PL are not considered

* Data on lorries <3,5t included in car or taxi (see Table 8)

** Data on lorries <3,5t included in HGV (see Table 9)

Table 11: Annual number of fatalities by country in accidents involving buses or coaches (Attention: fatalities in buses plus all opponents fatalities), 1997-2006

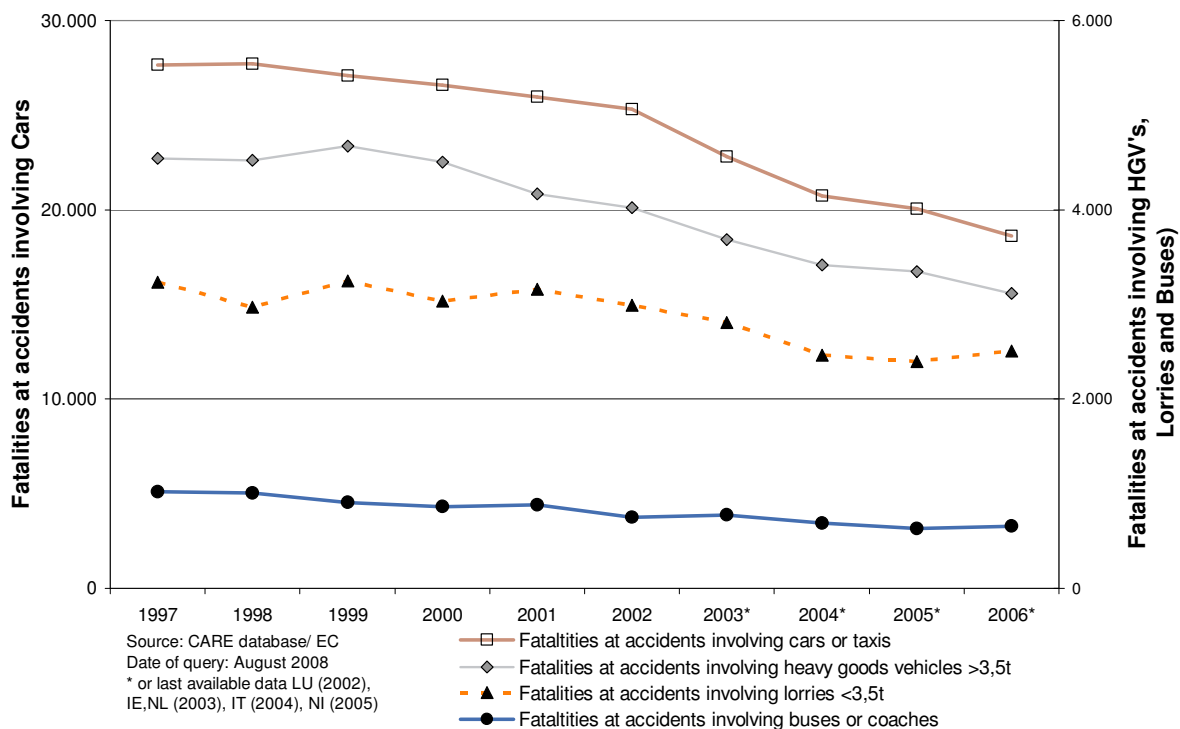
	1996	1997	1998	1999	2000	2001	2002	2003	2004	2005
BE	37	47	23	28	29	31	29	31	19	31
CZ	-	-	-	-	-	-	-	-	-	34
DK	15	11	25	14	14	22	26	15	11	14
EE	-	-	-	-	-	-	-	-	7	13
EL	79	93	79	71	59	60	94	48	53	36
ES	180	184	163	144	135	109	126	80	108	100
FR	188	127	127	144	117	109	97	99	91	76
IE	11	16	14	12	9	8	2	-	-	-
IT	137	105	131	119	113	105	122	125	-	-
LU	3	0	0	4	6	4	-	-	-	-
HU	-	-	-	-	-	-	71	58	62	64
MT	-	-	-	-	-	-	-	-	1	0
NL	29	29	21	23	27	21	21	-	-	-
AT	25	14	41	36	33	17	20	24	10	19
PL*	-	-	-	-	-	-	-	-	252	-
PT	104	145	58	57	66	51	26	41	23	13
FI	20	22	18	18	28	17	13	29	13	19
SE	15	16	23	16	32	29	33	16	13	36
UK	174	198	182	176	215	165	160	154	140	164 ¹
EU-14 ²	1.017	1.007	905	862	883	748	773 ¹	689 ¹	633 ¹	660 ¹
Yearly Change		-1,0%	-10,1%	-4,8%	2,4%	-15,3%	3,3%	-10,9%	-8,1%	4,3%
Total - all users ²	34.763	34.552	34.151	33.486	32.882	31.758	29.242 ¹	26.919 ¹	26.060 ¹	24.684 ¹
% buses	2,9%	2,9%	2,7%	2,6%	2,7%	2,4%	2,6%	2,6%	2,4%	2,7%

Source: CARE Database / EC
Date of query: August 2008

¹ Using latest data available, i.e. 2006 for all countries except LU (2002), IE and NL (2003), IT (2004), PL (2005) and UK (2006 for GB, 2005 for NI).

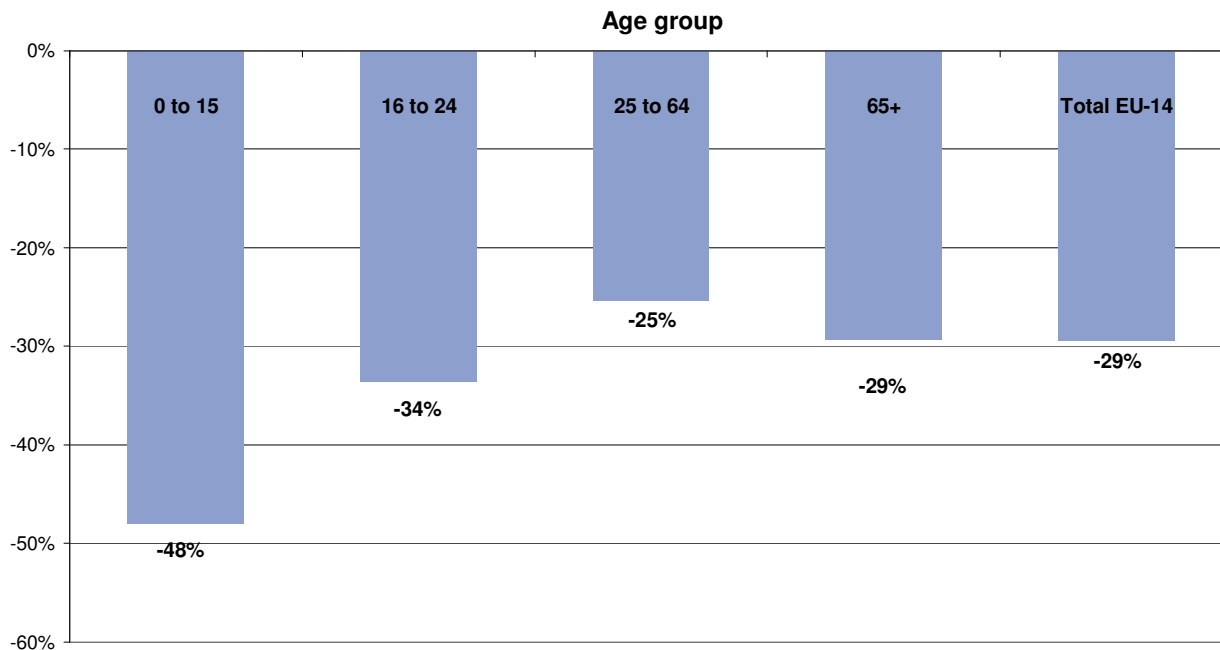
² The data from CZ, EE, HU, MT and PL are not considered

Figure 15: Annual number of fatalities involving different modes of transport, EU-14 (Attention: fatalities in specific mode of transport plus all opponents fatalities), 1997-2006



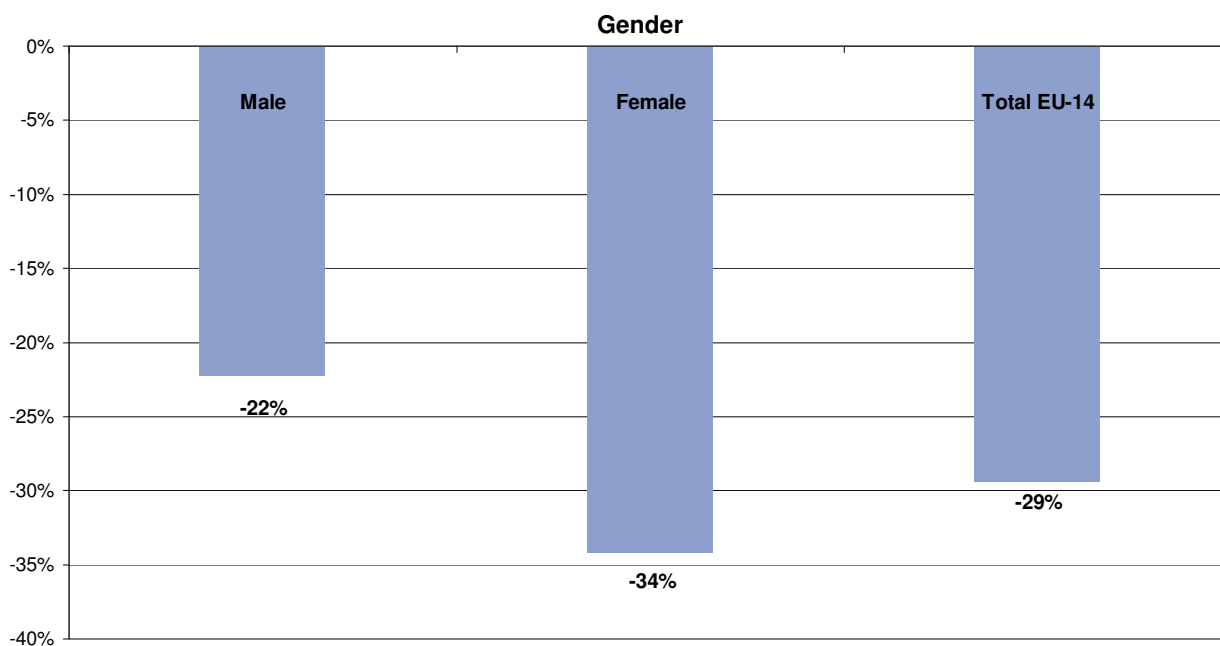
3.3 Time series related to person age and gender

Figure 16: Percentage change in number of fatalities by person age group (EU-14), 2006¹ compared to 1997



Source: CARE Database/ EC
Date of query: July 2008

Figure 17: Increase / decrease of number of fatalities by gender (EU-14), 2006¹ compared to 1997



Source: CARE Database/ EC
Date of query: July 2008

Table 12: Annual number of fatalities by age group by country, 1997-2002

	1997				1998				1999			
	0 to 15	16 to 24	25 to 64	65+	0 to 15	16 to 24	25 to 64	65+	0 to 15	16 to 24	25 to 64	65+
BE	61	295	761	237	99	334	795	260	72	319	769	233
CZ	-	-	-	-	-	-	-	-	-	-	-	-
DK	28	113	216	132	22	99	255	123	43	111	243	117
EE	-	-	-	-	-	-	-	-	-	-	-	-
EL	84	466	1.127	406	74	466	1.167	445	66	475	1.132	415
ES	223	1.239	3.107	900	260	1.365	3.334	890	258	1.255	3.187	910
FR	493	2.085	4.361	1.494	455	2.198	4.671	1.587	421	2.172	4.396	1.443
IE	34	127	202	66	40	138	189	80	26	114	188	71
IT	217	1.300	3.381	1.548	189	1.231	3.218	1.379	193	1.281	3.521	1.391
LU	3	17	28	9	2	8	39	7	2	12	37	7
HU	-	-	-	-	-	-	-	-	-	-	-	-
MT	-	-	-	-	-	-	-	-	-	-	-	-
NL	79	246	572	266	56	254	529	227	82	247	519	242
AT	43	298	552	212	48	205	502	208	51	254	549	225
PL	-	-	-	-	-	-	-	-	-	-	-	-
PT	139	580	1.331	441	152	519	1.086	365	96	477	1.064	340
FI	36	72	207	123	24	72	200	104	33	72	230	96
SE	32	73	265	171	33	84	266	148	44	82	281	173
UK	268	903	1.784	788	224	787	1.797	771	239	783	1.765	758
EU-14 ²	1.739	1.739	1.739	1.739	1.739	1.739	1.739	1.739	1.739	1.739	1.739	1.739
% by age group	5,0%	22,5%	51,5%	19,5%	4,9%	22,5%	52,2%	19,1%	4,8%	22,4%	52,4%	18,8%

	2000				2001				2002			
	0 to 15	16 to 24	25 to 64	65+	0 to 15	16 to 24	25 to 64	65+	0 to 15	16 to 24	25 to 64	65+
BE	67	368	784	238	71	319	824	264	45	300	739	210
CZ	-	-	-	-	-	-	-	-	-	-	-	-
DK	31	109	224	134	29	83	217	102	16	100	244	103
EE	-	-	-	-	-	-	-	-	-	-	-	-
EL	54	421	1.107	428	56	427	981	385	51	326	898	340
ES	228	1.253	3.270	849	208	1.123	3.165	867	189	1.069	3.106	835
FR	414	1.933	4.221	1.370	347	2.058	4.276	1.393	288	1.855	4.061	1.361
IE	24	138	195	44	33	126	197	47	23	93	180	60
IT	165	1.309	3.471	1.365	199	1.194	3.526	1.276	228	1.216	3.554	1.394
LU	3	17	45	10	6	18	39	7	3	13	41	5
HU	-	-	-	-	-	-	-	-	-	-	-	-
MT	-	-	-	-	-	-	-	-	-	-	-	-
NL	66	271	510	235	61	205	505	222	55	249	469	213
AT	35	233	518	190	34	212	526	186	33	207	505	211
PL	-	-	-	-	-	-	-	-	-	-	-	-
PT	89	393	1.013	342	65	375	868	320	72	315	960	304
FI	23	64	203	106	24	99	214	96	20	86	210	99
SE	24	113	300	154	25	115	296	147	27	111	283	139
UK	204	782	1.908	679	229	859	1.826	652	192	887	1.816	655
EU-14 ²	1.427	7.405	17.769	6.144	1.387	7.213	17.459	5.965	1.241	6.827	17.066	5.929
% by age group	4,3%	22,1%	53,1%	18,3%	4,2%	21,9%	53,1%	18,1%	3,9%	21,5%	53,7%	18,7%

Source: CARE Database / EC
Date of query: August 2008

¹ Using latest data available, i.e. 2006 for all countries except LU (2002), IE and NL (2003), IT (2004), PL (2005) and UK (2006 for GB, 2005 for NI).

² The data from CZ, EE, HU, MT and PL are not considered

From 3.873 out of 197.729 fatalities between 1997 and 2002 in EU-19 the age is unknown (=1,96%)

Table 13: Annual number of fatalities by age group by country, 2003-2006

	2003				2004				2005			
	0 to 15	16 to 24	25 to 64	65+	0 to 15	16 to 24	25 to 64	65+	0 to 15	16 to 24	25 to 64	65+
BE	37	275	650	240	35	263	659	201	39	225	633	186
CZ	-	-	-	-	-	-	-	-	-	-	-	-
DK	25	80	228	99	22	75	192	80	15	70	176	70
EE	-	-	-	-	-	-	-	-	13	30	105	21
EL	59	364	840	322	62	343	928	317	49	359	906	322
ES	189	1.128	3.102	817	162	927	2.787	746	149	843	2.656	719
FR	244	1.483	3.123	1.120	209	1.440	2.906	962	168	1.386	2.730	1.014
IE	17	93	166	53	-	-	-	-	-	-	-	-
IT	173	1.067	3.275	1.266	159	1.032	3.027	1.165	-	-	-	-
LU	-	-	-	-	-	-	-	-	-	-	-	-
HU	37	156	878	232	43	153	868	214	43	176	843	206
MT	-	-	-	-	-	-	-	-	3	8	3	3
NL	71	226	510	221	-	-	-	-	-	-	-	-
AT	45	207	481	197	30	198	471	177	35	178	404	151
PL	-	-	-	-	-	-	-	-	198	1.050	3.130	931
PT	63	268	887	304	55	245	747	230	39	249	725	222
FI	24	69	190	96	15	93	170	97	26	64	198	91
SE	28	109	274	118	24	87	230	139	19	77	237	104
UK	186	932	1.865	658	177	897	1.687	589	156	891	1.664	616
EU-14 ²	1.164 ¹	6.314 ¹	15.632 ¹	5.517 ¹	1.041 ¹	5.932 ¹	14.520 ¹	4.982 ¹	945 ¹	5.705 ¹	14.073 ¹	4.939 ¹
% by age group	4,0%	21,6%	53,5%	18,9%	3,9%	22,0%	53,9%	18,5%	3,6%	21,9%	54,0%	19,0%

	2006			
	0 to 15	16 to 24	25 to 64	65+
BE	35	213	623	193
CZ	36	197	647	173
DK	17	80	137	72
EE	7	39	126	32
EL	47	334	922	327
ES	144	712	2.534	667
FR	153	1.187	2.383	921
IE	-	-	-	-
IT	-	-	-	-
LU	-	-	-	-
HU	48	152	872	216
MT	0	4	6	1
NL	-	-	-	-
AT	30	157	387	156
PL	-	-	-	-
PT	24	135	580	215
FI	10	83	172	71
SE	24	91	235	95
UK	169 ¹	837 ¹	1.595 ¹	562 ¹
EU-14 ²	918 ¹	5.227 ¹	13.377 ¹	4.744 ¹
% by age group	3,7%	21,2%	54,2%	19,2%

Source: CARE Database / EC
Date of query: August 2008

¹ Using latest data available, i.e. 2006 for all countries except LU (2002), IE and NL (2003), IT (2004), PL (2005) and UK (2006 for GB, 2005 for NI).

² The data from CZ, EE, HU, MT and PL are not considered
From 1.580 out of 98.547 fatalities between 2003 and 2006 in EU-19 the age is unknown (=1,60%)

Figure 18: Annual number of fatalities by year and age, EU-14 (1997 and 2006¹)

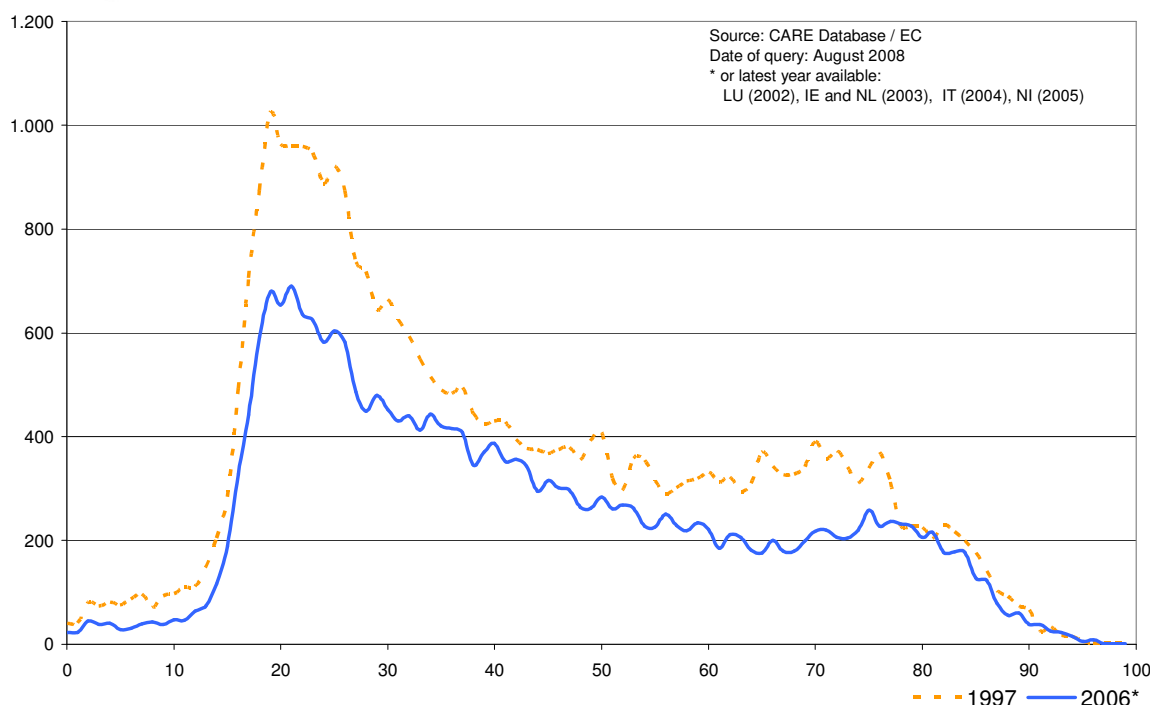


Table 14: Annual number of female fatalities by country, 1997-2006

	1997	1998	1999	2000	2001	2002	2003	2004	2005	2006
BE	345	419	376	367	384	341	299	250	260	248
CZ	-	-	-	-	-	-	-	-	-	225
DK	122	142	142	151	117	119	122	98	80	87
EE	-	-	-	-	-	-	-	-	42	50
EL	449	477	453	440	416	351	289	364	355	290
ES	1.345	1.478	1.409	1.338	1.325	1.263	1.246	1.124	958	892
FR	2.245	2.477	2.329	1.951	2.057	1.869	1.435	1.349	1.314	1.155
IE	131	115	118	104	103	101	79	-	-	-
IT	1.567	1.481	1.496	1.531	1.667	1.531	1.284	1.133	-	-
LU	19	8	16	17	17	12	-	-	-	-
HU	-	-	-	-	-	-	318	302	308	293
MT	-	-	-	-	-	-	-	-	4	-
NL	336	294	282	294	246	246	262	-	-	-
AT	288	269	320	246	251	276	251	215	195	190
PL	-	-	-	-	-	-	-	-	1.243	-
PT	508	392	390	347	363	348	302	264	233	182
FI	150	111	131	133	137	114	107	118	96	95
SE	136	121	158	153	149	137	138	116	113	112
UK	1.030	1.026	958	914	864	915	920	829	816	802 ¹
EU-14²	8.672	8.810	8.578	7.985	8.095	7.622	6.747¹	6.213¹	5.906¹	5.539¹
Yearly Change		1,6%	-2,6%	-6,9%	1,4%	-5,8%	-11,5%	-7,9%	-4,9%	-6,2%
Total - all users²	34.763	34.552	34.151	33.486	32.882	31.758	29.242¹	26.919¹	26.060¹	24.684¹
% female	24,9%	25,5%	25,1%	23,8%	24,6%	24,0%	23,1%	23,1%	22,7%	22,4%

Source: CARE Database / EC
Date of query: August 2008

¹ Using latest data available, i.e. 2006 for all countries except LU (2002), IE and NL (2003), IT (2004), PL (2005) and UK (2006 for GB, 2005 for NI).

² The data from CZ, EE, HU, MT and PL are not considered
From 964 out of 304.881 fatalities the gender is unknown (0,3%).



Table 15: Annual number of male fatalities by country, 1997-2006

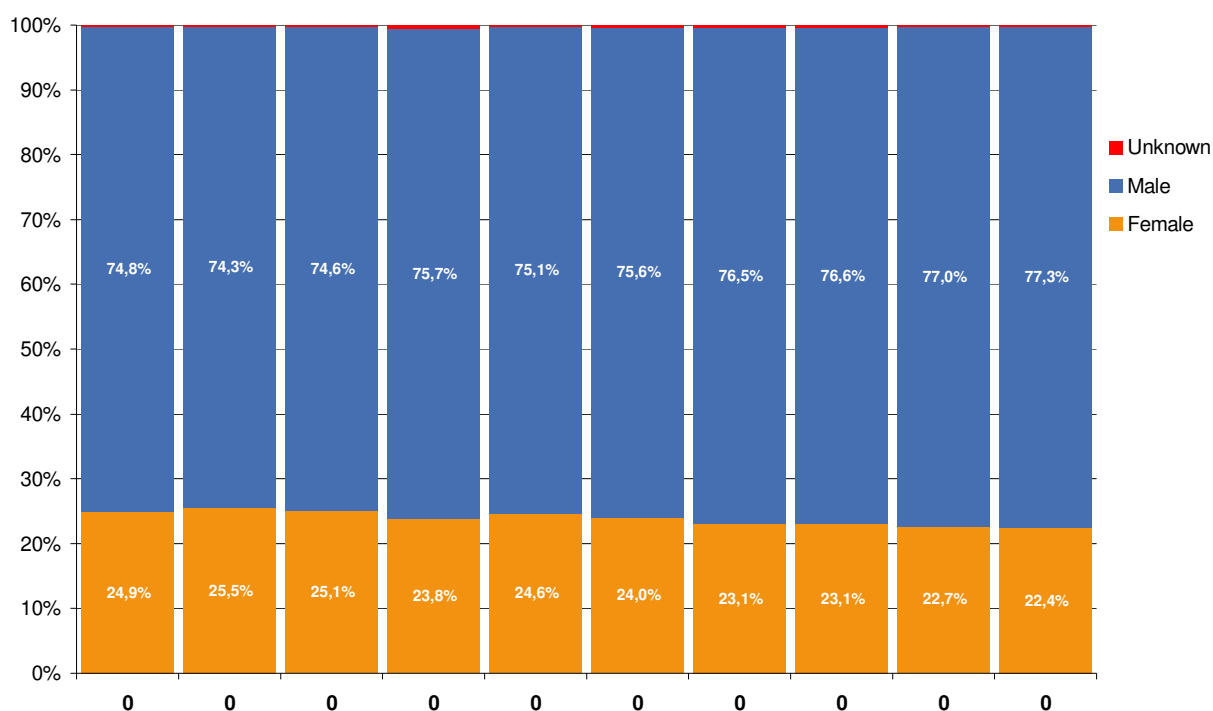
	1997	1998	1999	2000	2001	2002	2003	2004	2005	2006
BE	1.018	1.080	1.021	1.102	1.102	962	911	908	823	818
CZ	-	-	-	-	-	-	-	-	-	838
DK	367	357	372	347	314	344	310	271	251	219
EE	-	-	-	-	-	-	-	-	126	152
EL	1.647	1.688	1.653	1.590	1.458	1.277	1.313	1.303	1.296	1.361
ES	4.178	4.421	4.263	4.323	4.123	4.008	4.062	3.551	3.446	3.197
FR	6.199	6.441	6.158	6.127	6.103	5.786	4.622	4.181	4.004	3.554
IE	335	339	287	302	304	260	246	-	-	-
IT	5.145	4.833	5.192	5.118	5.024	5.208	4.781	4.492	-	-
LU	41	49	42	59	52	50	-	-	-	-
HU	-	-	-	-	-	-	1.008	993	963	1.008
MT	-	-	-	-	-	-	-	-	13	11
NL	827	768	802	784	743	734	758	-	-	-
AT	817	694	759	730	707	680	680	663	573	540
PL	-	-	-	-	-	-	-	-	4.175	-
PT	2.011	1.734	1.599	1.504	1.306	1.326	1.244	1.028	1.005	779
FI	288	289	300	263	296	301	272	257	283	241
SE	404	410	422	438	433	423	391	364	324	333
UK	2.713	2.555	2.604	2.666	2.728	2.662	2.738	2.539	2.520	2.505 ¹
EU-14 ²	25.991	25.658	25.474	25.353	24.694	24.020	22.378 ¹	20.612 ¹	20.072 ¹	19.093 ¹
Yearly Change		-1,3%	-0,7%	-0,5%	-2,6%	-2,7%	-6,8%	-7,9%	-2,6%	-4,9%
Total - all users ²	34.763	34.552	34.151	33.486	32.882	31.758	29.242 ¹	26.919 ¹	26.060 ¹	24.684 ¹
% male	74,8%	74,3%	74,6%	75,7%	75,1%	75,6%	76,5%	76,6%	77,0%	77,3%

Source: CARE Database / EC
Date of query: August 2008

¹ Using latest data available, i.e. 2006 for all countries except LU (2002), IE and NL (2003), IT (2004), PL (2005) and UK (2006 for GB, 2005 for NI).

² The data from CZ, EE, HU, MT and PL are not considered
From 964 out of 304.881 fatalities the gender is unknown (0,3%).

Figure 19: Annual distribution of fatalities by gender, EU-14 (1996 and 2006¹)



Source: CARE database EU-14
Date of query: August 2008

Table 16: Annual number of female fatalities by country, drivers (1997-2006)

	1997	1998	1999	2000	2001	2002	2003	2004	2005	2006
BE	169	190	182	184	188	155	153	138	136	136
CZ	-	-	-	-	-	-	-	-	-	70
DK	66	76	69	66	56	60	57	55	38	38
EE	-	-	-	-	-	-	-	-	8	13
EL	60	77	69	70	65	56	50	65	65	53
ES	282	311	332	303	333	330	337	295	242	255
FR	962	1.016	1.012	880	970	842	642	655	586	527
IE	36	30	43	38	33	35	26	-	-	-
IT	515	508	490	510	635	442	423	377	-	-
LU	8	3	10	6	4	6	-	-	-	-
HU	-	-	-	-	-	-	69	70	88	94
MT	-	-	-	-	-	-	-	-	0	0
NL	191	167	171	184	148	142	151	-	-	-
AT	111	89	129	100	112	105	115	94	96	96
PL	-	-	-	-	-	-	-	-	250	-
PT	88	63	80	86	70	83	70	56	67	46
FI	59	55	69	53	63	49	40	44	43	42
SE	54	53	54	67	52	56	63	41	51	52
UK	326	334	315	286	305	299	343	317	288	293 ¹
EU-14 ²	2.927	2.971	3.024	2.833	3.034	2.661	2.475 ¹	2.321 ¹	2.172 ¹	2.098 ¹
Yearly Change		1,5%	1,8%	-6,3%	7,1%	-12,3%	-7,0%	-6,2%	-6,4%	-3,4%
Total - all users ²	34.763	34.552	34.151	33.486	32.882	31.758	29.242 ¹	26.919 ¹	26.060 ¹	24.684 ¹
% female drivers	8,5%	8,4%	8,6%	8,9%	8,5%	9,2%	8,4%	8,5%	8,6%	8,3%

Source: CARE Database / EC
Date of query: August 2008

¹ Using latest data available, i.e. 2006 for all countries except LU (2002), IE and NL (2003), IT (2004), PL (2005) and UK (2006 for GB, 2005 for NI).

² The data from CZ, EE, HU, MT and PL are not considered
From 1.137 out of 304.881 fatalities the Gender or Person Class is unknown (0,4%)

Table 17: Annual number of male fatalities by country, drivers (1997-2006)

	1997	1998	1999	2000	2001	2002	2003	2004	2005	2006
BE	821	849	824	883	866	804	775	765	671	668
CZ	-	-	-	-	-	-	-	-	-	569
DK	265	268	270	229	243	250	243	214	195	162
EE	-	-	-	-	-	-	-	-	73	87
EL	1.137	1.181	1.157	1.122	1.064	921	958	951	986	1.021
ES	2.859	3.077	2.988	3.007	2.864	2.789	2.834	2.552	2.486	2.305
FR	4.600	4.854	4.684	4.613	4.651	4.398	3.586	3.237	3.113	2.799
IE	191	203	184	189	182	166	166	-	-	-
IT	3.827	3.621	3.921	3.769	3.621	3.690	3.541	3.362	-	-
LU	31	42	35	45	40	35	-	-	-	-
HU	-	-	-	-	-	-	624	630	607	628
MT	-	-	-	-	-	-	-	-	5	6
NL	676	612	626	609	600	587	616	-	-	-
AT	626	518	536	561	547	519	509	512	448	405
PL	-	-	-	-	-	-	-	-	2.216	-
PT	1.346	1.157	1.080	954	885	865	884	715	693	578
FI	217	200	214	205	219	231	207	181	217	191
SE	311	326	322	331	318	322	297	271	248	253
UK	1.679	1.604	1.635	1.716	1.739	1.751	1.806	1.684	1.714	1.683 ¹
EU-14 ²	18.585	18.512	18.475	18.233	17.839	17.328	16.457 ¹	15.260 ¹	14.950 ¹	14.244 ¹
Yearly Change		-0,4%	-0,2%	-1,3%	-2,2%	-2,9%	-5,0%	-7,3%	-2,0%	-4,7%
Total - all users ²	34.763	34.552	34.151	33.486	32.882	31.758	29.242 ¹	26.919 ¹	26.060 ¹	24.684 ¹
% male drivers	53,5%	53,6%	54,1%	54,5%	54,2%	54,6%	56,3%	56,7%	57,4%	57,7%

Source: CARE Database / EC
Date of query: August 2008

¹ Using latest data available, i.e. 2006 for all countries except LU (2002), IE and NL (2003), IT (2004), PL (2005) and UK (2006 for GB, 2005 for NI).

² The data from CZ, EE, HU, MT and PL are not considered
From 1.137 out of 304.881 fatalities the Gender or Person Class is unknown (0,4%)

Table 18: Annual number of female fatalities by country, passengers (1997-2006)

	1997	1998	1999	2000	2001	2002	2003	2004	2005	2006
BE	122	152	126	117	128	127	88	73	81	60
CZ	-	-	-	-	-	-	-	-	-	94
DK	29	36	46	42	38	40	48	29	28	20
EE	-	-	-	-	-	-	-	-	18	12
EL	243	232	225	236	208	193	150	172	197	142
ES	717	810	741	738	706	684	658	589	473	431
FR	896	1.065	948	786	794	680	538	466	462	403
IE	54	49	36	36	41	37	31	-	-	-
IT	672	637	666	655	691	659	613	533	-	-
LU	7	4	6	6	10	4	-	-	-	-
HU	-	-	-	-	-	-	164	125	127	108
MT	-	-	-	-	-	-	-	-	0	0
NL	89	76	80	76	61	63	72	-	-	-
AT	110	96	112	72	90	96	79	65	57	49
PL	-	-	-	-	-	-	-	-	486	-
PT	225	187	176	150	172	156	137	120	103	75
FI	48	33	41	45	48	43	42	49	37	29
SE	53	45	65	50	68	55	52	49	41	38
UK	345	338	343	321	291	333	301	284	270	278 ¹
EU-14 ²	3.610	3.761	3.610	3.331	3.346	3.170	2.813 ¹	2.536 ¹	2.389 ¹	2.165 ¹
Yearly Change		4,2%	-4,0%	-7,7%	0,5%	-5,3%	-11,3%	-9,8%	-5,8%	-9,3%
Total - all users ²	34.763	34.552	34.151	33.486	32.882	31.758	29.242 ¹	26.919 ¹	26.060 ¹	24.684 ¹
% female passengers	10,4%	10,9%	10,6%	9,9%	10,2%	10,0%	9,6%	9,4%	9,2%	8,8%

Source: CARE Database / EC
Date of query: August 2008

¹ Using latest data available, i.e. 2006 for all countries except LU (2002), IE and NL (2003), IT (2004), PL (2005) and UK (2006 for GB, 2005 for NI).

² The data from CZ, EE, HU, MT and PL are not considered
From 1.137 out of 304.881 fatalities the Gender or Person Class is unknown (0,4%)

Table 19: Annual number of male fatalities by country, passengers (1997-2006)

	1997	1998	1999	2000	2001	2002	2003	2004	2005	2006
BE	109	145	111	142	146	89	81	81	88	79
CZ	-	-	-	-	-	-	-	-	-	128
DK	42	46	47	62	44	50	33	28	25	26
EE	-	-	-	-	-	-	-	-	18	24
EL	253	268	263	230	199	181	188	187	174	170
ES	717	732	733	757	727	722	730	583	534	489
FR	1.004	939	911	961	923	869	666	591	522	445
IE	57	59	51	59	62	39	40	-	-	-
IT	768	652	747	806	804	783	700	631	-	-
LU	6	5	5	8	4	11	-	-	-	-
HU	-	-	-	-	-	-	170	144	165	176
MT	-	-	-	-	-	-	-	-	6	1
NL	88	98	98	104	76	92	85	-	-	-
AT	102	95	120	103	92	76	96	75	70	70
PL	-	-	-	-	-	-	-	-	722	-
PT	312	314	261	278	205	231	176	170	161	107
FI	45	50	40	31	41	52	31	52	37	25
SE	50	38	53	70	57	69	62	52	45	43
UK	383	359	361	368	399	386	406	389	365	350 ¹
EU-14 ²	3.936	3.799	3.801	3.979	3.779	3.650	3.304 ¹	2.975 ¹	2.788 ¹	2.571 ¹
Yearly Change		-3,5%	0,1%	4,7%	-5,0%	-3,4%	-9,5%	-10,0%	-6,3%	-7,8%
Total - all users ²	34.763	34.552	34.151	33.486	32.882	31.758	29.242 ¹	26.919 ¹	26.060 ¹	24.684 ¹
% male passengers	11,3%	11,0%	11,1%	11,9%	11,5%	11,5%	11,3%	11,1%	10,7%	10,4%

Source: CARE Database / EC
Date of query: August 2008

¹ Using latest data available, i.e. 2006 for all countries except LU (2002), IE and NL (2003), IT (2004), PL (2005) and UK (2006 for GB, 2005 for NI).

² The data from CZ, EE, HU, MT and PL are not considered
From 1.137 out of 304.881 fatalities the Gender or Person Class is unknown (0,4%)

Table 20: Annual number of female fatalities by country, pedestrians (1997-2006)

	1997	1998	1999	2000	2001	2002	2003	2004	2005	2006
BE	54	76	68	65	68	59	58	39	43	52
CZ	-	-	-	-	-	-	-	-	-	61
DK	27	30	27	43	23	19	17	14	14	29
EE	-	-	-	-	-	-	-	-	16	25
EL	146	168	159	134	143	102	89	127	93	95
ES	347	357	337	297	285	248	251	239	243	206
FR	387	395	369	284	293	347	256	227	266	225
IE	41	36	39	30	29	29	22	-	-	-
IT	369	320	340	366	337	430	247	219	-	-
LU	4	1	0	5	3	2	-	-	-	-
HU	-	-	-	-	-	-	85	107	93	91
MT	-	-	-	-	-	-	-	-	4	0
NL	56	51	31	34	37	41	39	-	-	-
AT	67	84	79	74	49	75	57	56	42	45
PL	-	-	-	-	-	-	-	-	507	-
PT	195	143	135	111	121	108	96	89	63	62
FI	43	23	21	35	26	22	25	25	16	24
SE	29	23	39	36	29	26	23	26	19	21
UK	359	354	300	307	268	283	276	228	258	231 ¹
EU-14 ²	2.123	2.061	1.943	1.821	1.711	1.791	1.458 ¹	1.352 ¹	1.339 ¹	1.272 ¹
Yearly Change		-2,9%	-5,7%	-6,3%	-6,0%	4,7%	-18,6%	-7,2%	-1,0%	-5,0%
Total - all users ²	34.763	34.552	34.151	33.486	32.882	31.758	29.242 ¹	26.919 ¹	26.060 ¹	24.684 ¹
% female pedestrians	6,1%	6,0%	5,7%	5,4%	5,2%	5,6%	5,0%	5,0%	5,1%	5,2%

Source: CARE Database / EC
Date of query: August 2008

¹ Using latest data available, i.e. 2006 for all countries except LU (2002), IE and NL (2003), IT (2004), PL (2005) and UK (2006 for GB, 2005 for NI).

² The data from CZ, EE, HU, MT and PL are not considered
From 1.137 out of 304.881 fatalities the Gender or Person Class is unknown (0,4%)

Table 21: Annual number of male fatalities by country, pedestrians (1997-2006)

	1997	1998	1999	2000	2001	2002	2003	2004	2005	2006
BE	87	85	86	77	90	68	55	62	64	70
CZ	-	-	-	-	-	-	-	-	-	141
DK	60	43	55	56	26	44	32	29	30	31
EE	-	-	-	-	-	-	-	-	33	37
EL	257	239	233	238	195	175	167	165	136	170
ES	602	612	542	559	532	497	499	416	426	403
FR	595	649	563	554	530	519	370	354	369	310
IE	87	77	52	54	60	55	40	-	-	-
IT	524	524	507	531	595	733	534	491	-	-
LU	4	2	2	6	8	4	-	-	-	-
HU	-	-	-	-	-	-	214	219	191	204
MT	-	-	-	-	-	-	-	-	2	4
NL	63	57	77	71	67	55	56	-	-	-
AT	89	81	103	66	68	85	75	76	55	65
PL	-	-	-	-	-	-	-	-	1.237	-
PT	354	263	259	271	217	229	185	144	152	93
FI	26	39	46	27	36	18	34	24	29	25
SE	43	46	47	37	58	32	32	41	31	34
UK	651	592	608	582	590	525	526	466	441	472 ¹
EU-14 ²	3.442	3.310	3.180	3.129	3.071	3.039	2.608 ¹	2.368 ¹	2.323 ¹	2.264 ¹
Yearly Change		-3,8%	-3,9%	-1,6%	-1,9%	-1,0%	-14,2%	-9,2%	-1,9%	-2,5%
Total - all users ²	34.763	34.552	34.151	33.486	32.882	31.758	29.242 ¹	26.919 ¹	26.060 ¹	24.684 ¹
% male pedestrians	9,9%	9,6%	9,3%	9,3%	9,3%	9,6%	8,9%	8,8%	8,9%	9,2%

Source: CARE Database / EC
Date of query: August 2008

¹ Using latest data available, i.e. 2006 for all countries except LU (2002), IE and NL (2003), IT (2004), PL (2005) and UK (2006 for GB, 2005 for NI).

² The data from CZ, EE, HU, MT and PL are not considered
From 1.137 out of 304.881 fatalities the Gender or Person Class is unknown (0,4%)

4 Fatalities 2006

4.1 People involved

4.1.1 Age and gender of persons

Table 22: Number of total fatalities by age group by country, 2006

	0-9	10-15	16-17	18-20	21-24	25-29	30-39	40-49	50-59	60-64	65-74	75+	Total
BE	19	16	18	85	110	132	180	170	114	27	80	113	1.069
CZ	12	24	14	75	108	97	189	146	160	55	80	93	1.063
DK	8	9	15	35	30	17	37	37	31	15	25	47	306
EE	2	5	4	16	19	17	32	24	43	10	20	12	204
EL	23	24	29	106	199	211	301	213	136	61	160	167	1.657
ES	64	80	107	233	372	499	843	604	419	169	331	336	4.104
FR	62	91	150	462	575	454	680	605	485	159	340	581	4.709
IE***	12	5	11	34	48	36	60	30	32	8	22	31	337
IT**	52	107	149	331	552	614	1.005	645	521	242	511	654	5.625
LU****	2	1	3	6	4	6	19	11	5	0	3	2	62
HU	16	32	18	65	69	129	237	199	235	72	119	97	1.303
MT	0	0	1	1	2	1	2	2	0	1	0	1	11
NL***	33	38	47	85	94	89	157	117	99	48	82	139	1.028
AT	11	19	28	64	65	51	94	112	94	36	64	92	730
PL*	87	111	117	363	570	531	757	812	820	210	482	449	5.444
PT	13	11	8	54	73	127	155	122	117	59	127	89	969
FI	2	8	16	40	27	27	34	43	48	20	35	36	336
SE	12	12	16	34	41	36	52	54	65	28	36	59	445
UK*	68	116	174	355	342	303	521	410	294	132	186	397	3.307
EU-19	498	709	925	2.444	3.300	3.377	5.355	4.356	3.718	1.352	2.703	3.395	32.709
% by age group	1,5%	2,2%	2,8%	7,5%	10,1%	10,3%	16,4%	13,3%	11,4%	4,1%	8,3%	10,4%	100%

* Data 2005 (UK = GB(2006) + NI(2005))

*** Data 2003

Source: CARE Database / EC
Date of query: August 2008

** Data 2004

**** Data 2002

From 578 fatalities the age is unknown (1,8%).

Table 23: Number of female fatalities by age group by country, 2006

	0-9	10-15	16-17	18-20	21-24	25-29	30-39	40-49	50-59	60-64	65-74	75+	Total
BE	10	5	6	16	11	21	35	26	33	6	28	51	248
CZ	5	6	6	12	19	20	28	29	27	8	24	40	225
DK	6	5	5	7	6	2	5	11	4	8	10	18	87
EE	2	1	1	4	0	5	4	4	9	4	9	7	50
EL	6	5	5	10	23	24	42	27	27	15	48	52	290
ES	16	21	22	49	71	81	139	97	87	51	126	119	892
FR	24	32	33	98	95	60	115	133	133	46	120	253	1.155
IE***	5	2	6	7	7	3	8	4	9	3	8	16	79
IT**	25	23	32	52	91	91	155	107	111	54	148	177	1.133
LU****	0	0	1	1	1	1	3	1	1	0	1	2	12
HU	5	8	6	10	7	26	40	30	55	19	47	36	293
MT	0	0	0	0	0	0	0	0	0	0	0	0	0
NL***	9	18	17	19	21	13	26	19	24	13	34	49	262
AT	4	7	7	10	11	16	17	26	20	13	20	39	190
PL*	40	45	47	75	83	71	131	131	159	53	172	209	1.243
PT	1	5	3	14	10	21	25	15	27	14	21	27	182
FI	2	2	5	7	2	5	11	12	13	5	15	16	95
SE	2	3	3	10	6	7	11	11	20	8	13	18	112
UK*	26	42	38	70	50	55	67	90	73	36	70	182	802
EU-19	188	230	243	471	514	522	862	773	832	356	914	1.311	7.350
% by age group	2,6%	3,1%	3,3%	6,4%	7,0%	7,1%	11,7%	10,5%	11,3%	4,8%	12,4%	17,8%	100%

* Data 2005 (UK = GB(2006) + NI(2005))

*** Data 2003

Source: CARE Database / EC
Date of query: August 2008

** Data 2004

**** Data 2002

From 625 fatalities the age and/or gender is unknown (1,9%)

Table 24: Number of male fatalities by age group by country, 2006

	0-9	10-15	16-17	18-20	21-24	25-29	30-39	40-49	50-59	60-64	65-74	75+	Total
BE	8	11	12	69	99	111	145	144	81	21	52	62	818
CZ	7	18	8	63	89	77	161	117	133	47	56	53	838
DK	2	4	10	28	24	15	32	26	27	7	15	29	219
EE	0	4	3	12	19	12	28	20	33	6	11	4	152
EL	17	19	24	96	176	187	259	186	109	46	112	115	1.361
ES	48	58	85	184	300	417	700	507	331	118	205	217	3.197
FR	38	59	117	364	480	394	565	472	352	113	220	328	3.554
IE***	7	2	5	27	41	30	51	25	22	5	14	15	246
IT**	27	84	117	279	461	523	850	538	410	188	363	477	4.492
LU****	2	1	2	5	3	5	16	10	4	0	2	0	50
HU	11	24	12	55	62	103	197	169	180	53	72	61	1.008
MT	0	0	1	1	2	1	2	2	0	1	0	1	11
NL***	24	20	30	66	72	74	131	98	72	35	48	88	758
AT	7	12	21	54	54	35	77	86	74	23	44	53	540
PL*	47	66	69	287	487	459	623	680	659	156	307	240	4.175
PT	11	7	5	40	63	106	129	104	89	46	106	59	779
FI	0	6	11	33	25	22	23	31	35	15	20	20	241
SE	10	9	13	24	35	29	41	43	45	20	23	41	333
UK*	42	74	136	285	292	248	454	320	221	96	116	215	2.505
EU-19	308	478	681	1.972	2.784	2.848	4.484	3.578	2.877	996	1.786	2.078	25.277
% by age group	1,2%	1,9%	2,7%	7,8%	11,0%	11,3%	17,7%	14,2%	11,4%	3,9%	7,1%	8,2%	100%

* Data 2005 (UK = GB(2006) + NI(2005))

** Data 2003

** Data 2004

*** Data 2002

From 625 fatalities the age and/or gender is unknown (1,9%)

Source: CARE Database / EC
Date of query: August 2008

4.1.2 Age of persons by mode of transport

Table 25: Number of fatalities aged 0 to 15 by mode of transport (in which the fatality was travelling) by country, 2006

	Pedestrian	Pedal Cycle	Motor-cycle Moped	Motor-cycle	Car or Taxi	Lorry, under 3,5 Tonnes	Heavy Goods Vehicle	Bus or Coach	Agricultural Tractor	Others/Unknown	Total
BE	6	8	1	2	14	0	0	0	0	0	31
CZ	12	6	0	1	16	0	0	1	0	1	37
DK	9	4	1	0	2	0	0	0	0	0	16
EE	2	1	0	0	4	0	0	0	0	0	7
EL	12	3	2	10	17	0	1	0	2	2	49
ES	28	6	31	1	70	1	1	5	0	5	148
FR	25	17	25	4	74	3	0	1	1	2	152
IE***	8	3	0	0	6	0	0	0	0	0	17
IT**	23	13	41	12	66	1	0	1	0	2	159
LU****	1	0	0	0	2	0	0	0	0	0	3
HU	8	10	1	0	27	1	0	0	0	0	47
MT	0	0	0	0	0	0	0	0	0	0	0
NL***	17	25	3	0	20	3	0	0	3	0	71
AT	8	0	4	0	16	0	0	0	1	1	30
PL*	78	28	6	5	70	0	3	5	3	0	198
PT	8	2	2	0	10	1	0	0	0	0	24
FI	1	2	4	0	3	0	0	0	0	0	10
SE	8	2	4	0	9	0	0	0	1	1	25
UK*	77	34	3	4	64	1	0	0	0	0	183
EU-19	331	164	128	39	490	11	5	13	11	14	1.207
% by vehicle group	27,4%	13,6%	10,6%	3,2%	40,6%	0,9%	0,4%	1,1%	0,9%	1,2%	100,0%

* Data 2005 (UK = GB(2006) + NI(2005))
** Data 2004

*** Data 2003
**** Data 2002

Source: CARE Database / EC
Date of query: July 2008



Table 26: Number of fatalities aged 16 to 24 by mode of transport (in which the fatality was travelling) by country, 2006

	Pedestrian	Pedal Cycle	Moped	Motor-cycle	Car or Taxi	Lorry, under 3,5 Tonnes	Heavy Goods Vehicle	Bus or Coach	Agricultural Tractor	Others/Unknown	Total
BE	12	9	16	27	139	1	1	0	0	8	213
CZ	17	5	0	28	143	3	1	0	0	0	197
DK	8	2	10	5	48	6	0	1	0	0	80
EE	5	0	0	0	33	0	0	0	0	1	39
EL	15	3	15	140	150	5	2	1	0	3	334
ES	41	9	128	63	424	26	5	3	1	12	712
FR	48	16	184	198	702	19	13	0	2	5	1.187
IE***	5	1	0	14	59	10	1	0	0	3	93
IT**	20	10	122	223	628	8	6	2	0	13	1.032
LU****	0	0	0	0	13	0	0	0	0	0	13
HU	13	5	6	18	99	8	2	1	0	0	152
MT	0	0	0	1	3	0	0	0	0	0	4
NL***	4	15	34	15	147	11	0	0	0	0	226
AT	14	3	12	17	105	3	1	0	2	0	157
PL*	163	37	7	62	724	0	32	17	8	0	1.050
PT	3	3	16	36	63	13	0	0	0	0	135
FI	7	0	4	10	61	0	0	1	0	0	83
SE	2	2	1	11	69	3	1	0	0	2	91
UK*	91	8	19	127	611	8	1	2	0	4	871
EU-19	468	128	574	995	4.221	124	66	28	13	51	6.669
% by vehicle group	7,0%	1,9%	8,6%	14,9%	63,3%	1,9%	1,0%	0,4%	0,2%	0,8%	100,0%

* Data 2005 (UK=GB(2006) + NI(2005))
** Data 2004

** Data 2003
*** Data 2002

Source: CARE Database / EC
Date of query: July 2008

Table 27: Number of fatalities aged 25 to 64 by mode of transport by country, 2006

	Pedestrian	Pedal Cycle	Moped	Motor-cycle	Car or Taxi	Lorry, under 3,5 Tonnes	Heavy Goods Vehicle	Bus or Coach	Agricultural Tractor	Others/Unknown	Total
BE	52	30	15	99	358	29	14	0	2	24	623
CZ	100	71	1	81	336	25	21	8	3	1	647
DK	17	12	9	15	62	17	1	2	2	0	137
EE	42	7	2	5	59	0	5	1	0	5	126
EL	89	7	27	270	434	56	18	3	11	7	922
ES	269	47	110	408	1.288	213	124	19	11	45	2.534
FR	176	70	94	563	1.287	89	69	7	7	21	2.383
IE***	27	2	0	41	82	8	4	0	0	2	166
IT**	259	124	142	777	1.492	41	43	13	12	124	3.027
LU****	2	1	0	0	35	0	3	0	0	0	41
HU	176	87	30	71	440	26	25	6		11	872
MT	3	0		1	2	0	0	0	0	0	6
NL***	37	64	30	80	248	40	7	0	2	2	510
AT	35	23	14	75	204	12	13	7	3	1	387
PL*	939	326	28	83	1.498	0	175	25	44	12	3.130
PT	78	17	54	98	227	70	18	1	15	3	580
FI	22	13	1	16	106	3	7	1	1	2	172
SE	20	11	7	41	137	3	6	8	1	1	235
UK*	282	87	6	440	741	45	40	10	0	9	1.660
EU-19	2.625	999	570	3.164	9.036	677	593	111	114	270	18.158
% by vehicle group	14,5%	5,5%	3,1%	17,4%	49,8%	3,7%	3,3%	0,6%	0,6%	1,5%	100,0%

* Data 2005 (UK=GB(2006) + NI(2005))
** Data 2004

** Data 2003
*** Data 2002

Source: CARE Database / EC
Date of query: July 2008

Table 28: Number of fatalities aged 65+ by mode of transport (in which the fatality was travelling) by country, 2006

	Pedes- trian	Pedal Cycle	Moped	Motor- cycle	Car or Taxi	Lorry, under 3,5 Tonnes	Heavy Goods Vehicle	Bus or Coach	Agricultural Tractor	Others/ Unknown	Total
BE	52	45	4	2	75	3	0	0	0	12	193
CZ	67	28	2	3	68	3	0	1	1	0	173
DK	26	13	4	1	26	1	1	0	0	0	72
EE	15	5	0	0	10	0	1	0	0	1	32
EL	141	8	12	18	107	21	2	0	16	2	327
ES	254	12	34	4	301	27	3	7	20	5	667
FR	281	77	13	17	515	7	5	0	2	4	921
IE***	22	4	0	0	21	1	3	0	0	2	53
IT**	381	143	69	27	504	5	0	3	8	25	1.165
LU****	3	0	0	0	2	0	0	0	0	0	5
HU	93	50	5	0	60	1	1	3	0	3	216
MT	1	0	0	0	0	0	0	0	0	0	1
NL***	39	84	27	0	68	1	1	0	0	1	221
AT	53	22	9	3	59	1	1	1	2	5	156
PL*	512	192	12	4	190	0	5	3	12	1	931
PT	65	17	25	1	65	14	0	0	26	2	215
FI	19	14	4	0	33	0	0	0	1	0	71
SE	25	11	3	3	46	3	0	2	1	1	95
UK*	251	21	1	12	263	1	1	16	0	17	583
EU-19	2.300	746	224	95	2.413	89	24	36	89	81	6.097
% by vehicle group	37,7%	12,2%	3,7%	1,6%	39,6%	1,5%	0,4%	0,6%	1,5%	1,3%	100,0%

* Data 2005 (UK=GB(2006) + NI(2005))
** Data 2004

*** Data 2003
**** Data 2002

Source: CARE Data base / EC
Date of query: July 2008

4.2 Modes of transport

4.2.1 Mode of transport by age of persons

Figure 20: Fatalities by age group and mode of transport (EU-19), 2006¹

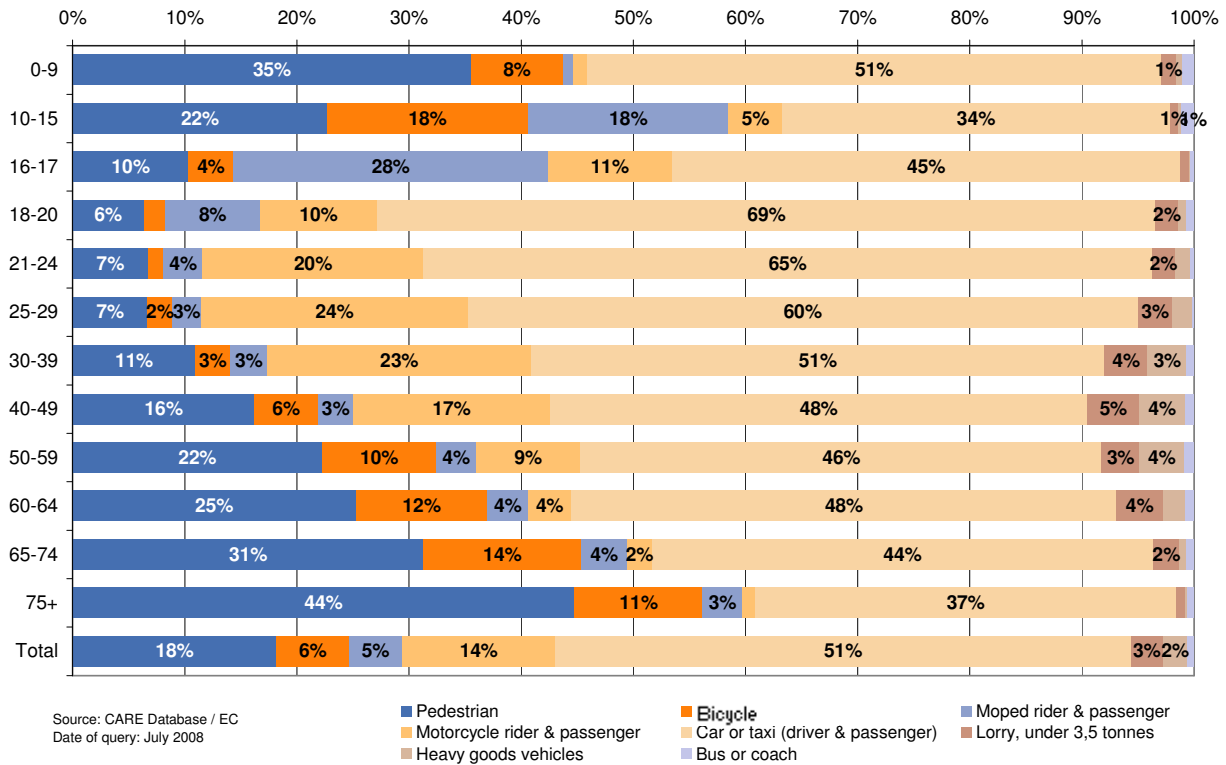


Table 29: Number of pedestrian fatalities by age group by country, 2006

	0-9	10-15	16-17	18-20	21-24	25-29	30-39	40-49	50-59	60-64	65-74	75+	Total
BE	3	3	4	3	5	6	17	12	14	3	15	37	122
CZ	4	8	3	6	8	9	17	32	30	12	19	48	202
DK	6	3	2	6	0	2	3	4	4	4	9	17	60
EE	2	0	0	3	2	2	7	9	20	4	8	7	64
EL	8	4	1	3	11	7	27	22	24	9	43	98	267
ES	18	10	5	11	25	25	76	64	69	35	103	151	613
FR	14	11	15	15	18	21	44	38	54	19	80	201	535
IE***	6	2	0	2	3	3	7	3	11	3	8	14	64
IT**	15	8	2	6	12	29	59	63	72	36	122	259	710
LU****	1	0	0	0	0	0	0	2	0	0	2	1	6
HU	4	4	3	6	4	5	32	37	68	34	43	50	296
MT	0	0	0	0	0	0	1	1	0	1	0	1	4
NL***	11	6	1	2	1	3	8	11	10	5	11	28	97
AT	4	4	3	5	6	2	7	7	12	7	17	36	110
PL*	34	44	30	48	85	62	168	283	318	108	232	280	1.756
PT	5	3	0	3	0	5	9	21	24	19	29	36	156
FI	0	1	2	4	1	3	3	6	6	4	9	10	49
SE	5	3	0	0	2	3	4	3	9	1	7	18	55
UK*	34	43	23	31	37	36	88	72	59	27	62	189	703
EU-18	174	157	94	154	220	223	577	690	804	331	819	1.481	5.869
% by age group	3,0%	2,7%	1,6%	2,6%	3,7%	3,8%	9,8%	11,7%	13,7%	5,6%	13,9%	25,2%	100%

* Data 2005 (UK = GB(2006) + NI(2005))
** Data 2004
From 145 pedestrian fatalities the age is unknown.

*** Data 2003
**** Data 2002

Source: CARE Database / EC
Date of query: August 2008

Table 30: Number of bicycle fatalities by age group by country, 2006

	0-9	10-15	16-17	18-20	21-24	25-29	30-39	40-49	50-59	60-64	65-74	75+	Total
BE	3	5	0	7	2	4	3	4	13	6	17	28	92
CZ	1	5	1	2	2	4	9	17	32	9	13	15	110
DK	0	4	0	2	0	0	4	3	1	4	5	8	31
EE	0	1	0	0	0	0	0	0	4	3	3	2	13
EL	2	1	0	1	2	0	1	4	2	0	5	3	21
ES	1	5	5		4	4	9	12	14	8	7	5	75
FR	2	15	4	7	5	5	6	19	28	12	36	41	181
IE***	1	2	0	0	1	1	0	0	1	0	3	1	10
IT**	2	11	4	2	4	11	25	26	37	25	56	87	296
LU****	0	0	0	0	0	0	0	0	1	0	0	0	1
HU	1	9	1	2	2	4	9	27	37	10	31	19	153
MT	0	0	0	0	0	0	0	0	0	0	0	0	0
NL***	6	19	6	5	4	4	10	10	23	17	33	51	188
AT	0	0	1	1	1	1	5	8	5	4	10	12	48
PL*	9	19	8	15	14	24	49	87	129	37	114	78	603
PT	1	1	1	1	1	0	5	3	7	2	11	6	40
FI	0	2	0	0	0	0	1	1	7	4	8	6	29
SE	0	2	1	0	1	1	2	1	5	2	5	6	26
UK*	11	23	4	2	2	10	28	17	21	11	9	12	150
EU-19	40	124	36	47	45	73	166	239	367	154	366	380	2.067
% by age group	1,9%	6,0%	1,7%	2,3%	2,2%	3,5%	8,0%	11,6%	17,7%	7,5%	17,7%	18,4%	100%

* Data 2005 (UK = GB(2006) + NI(2005))

** Data 2003

Source: CARE Database / EC

** Data 2004

*** Data 2002

Date of query: August 2008

From 29 bicyclist fatalities the age is unknown (1,4%).

Table 31: Number of moped and motorcycle rider fatalities by age group by country, 2006

	0-9	10-15	16-17	18-20	21-24	25-29	30-39	40-49	50-59	60-64	65-74	75+	Total
BE	0	1	1	11	26	22	37	38	13	1	5	1	156
CZ	0	0	3	7	14	24	31	12	9	1	3	2	106
DK	0	1	5	2	6	3	6	8	6	0	2	3	42
EE	0	0	0	0	0	2	3	1	1	0	0	0	7
EL	0	8	12	45	73	79	105	55	25	9	18	11	440
ES	0	22	53	46	68	107	205	119	47	12	19	18	716
FR	0	21	75	115	165	133	222	171	88	17	16	9	1.032
IE***	0	0	1	4	7	13	16	9	2	0	0	0	52
IT**	0	35	77	74	153	217	356	181	96	18	41	50	1.298
LU****	0	0	0	0	0	0	0	0	0	0	0	0	0
HU	0	1	3	7	12	16	45	26	8	2	4	1	125
MT	0	0	0	0	0	0	0	1	0	0	0	0	1
NL***	0	1	23	7	15	25	41	21	14	6	5	22	180
AT	0	3	6	5	14	9	21	24	23	9	7	5	126
PL*	1	10	7	16	39	47	28	9	16	4	11	3	191
PT	1	0	3	13	29	38	55	26	24	2	15	10	215
FI	0	4	7	1	6	3	6	2	4	1	2	2	38
SE	0	4	2	3	6	7	11	9	17	2	3	3	67
UK*	0	5	33	48	58	77	172	118	54	11	7	6	589
EU-19	2	116	311	404	691	822	1.360	830	447	95	158	146	5.381
% by age group	0,0%	2,2%	5,8%	7,5%	12,8%	15,3%	25,3%	15,4%	8,3%	1,8%	2,9%	2,7%	100,0%

* Data 2005 (UK = GB(2006) + NI(2005))

** Data 2003

Source: CARE Database / EC

** Data 2004

*** Data 2002

Date of query: July 2008

Table 32: Number of moped and motorcycle passenger fatalities by age group by country, 2006

	0-9	10-15	16-17	18-20	21-24	25-29	30-39	40-49	50-59	60-64	65-74	75+	Total
BE	1	1	2	2	1	0	1	1	1	0	0	0	10
CZ	1	0	0	1	3	1	0	3	0	1	0	0	10
DK	0	0	0	1	1	0	0	1	0	0	0	0	3
EE	0	0	0	0	0	0	0	0	0	0	0	0	0
EL	2	2	5	11	9	13	6	5	0	0	0	1	54
ES	1	9	8	7	9	6	10	10	2	0	1	0	63
FR	0	8	8	9	10	7	6	8	4	1	2	3	66
IE***	0	0	0	1	1	0	1	0	0	0	0	0	3
IT**	1	17	12	9	20	18	20	10	3	0	3	2	115
LU****	0	0	0	0	0	0	0	0	0	0	0	0	0
HU	0	0	0	1	1	0	2	1	1	0	0	0	6
MT	0	0	1	0	0	0	0	0	0	0	0	0	1
NL***	0	2	1	1	2	1	0	0	2	0	0	0	9
AT	0	1	3	1	0	0	0	2	1	0	0	0	8
PL*	0	0	3	3	1	2	3	1	0	1	1	1	16
PT	1	0	0	3	5	6	0	0	1	0	1	0	17
FI	0	0	0	0	0	0	1	0	0	0	0	0	1
SE	0	0	0	1	0	0	0	1	1	0	0	0	3
UK*	1	1	1	3	3	1	5	5	3	0	0	0	23
EU-19	8	41	44	54	66	55	55	48	19	3	8	7	408
% by age group	2,0%	10,0%	10,8%	13,3%	16,1%	13,4%	13,5%	11,8%	4,7%	0,7%	2,0%	1,7%	100,0%

* Data 2005 (UK = GB(2006) + NI(2005))
** Data 2004

*** Data 2003
**** Data 2002

Source: CARE Database / EC
Date of query: July 2008

Table 33: Number of car or taxi driver fatalities by age group by country, 2006

	0-9	10-15	16-17	18-20	21-24	25-29	30-39	40-49	50-59	60-64	65-74	75+	Total
BE	0	0	3	38	56	75	87	88	49	11	27	30	464
CZ	0	0	0	32	48	28	81	59	57	23	24	17	369
DK	0	0	3	17	12	8	13	13	12	3	6	13	100
EE	0	0	3	5	14	9	15	7	9	0	6	1	69
EL	0	1	1	18	77	80	111	81	42	20	43	19	493
ES	0	0	1	79	157	212	317	226	159	57	89	77	1.374
FR	0	0	3	191	256	213	301	255	211	72	136	225	1.863
IE***	0	0	0	11	20	15	20	13	11	3	4	10	107
IT**	0	0	1	118	221	234	374	230	201	105	184	162	1.830
LU****	0	0	0	2	3	4	16	8	3	0	1	1	38
HU	0	0	0	22	28	64	91	59	66	18	22	13	383
MT	0	0	0	1	2	1	1	0	0	0	0	0	5
NL***	0	0	1	41	50	41	70	51	33	14	21	23	345
AT	0	1	5	39	37	28	45	46	34	12	18	22	287
PL*	0	1	7	130	244	238	303	248	165	26	59	37	1.458
PT	0	0	0	9	18	41	46	34	24	17	35	10	235
FI	0	0	0	28	13	11	19	29	17	11	13	13	154
SE	0	0	5	20	21	17	28	26	26	12	11	26	192
UK*	0	5	43	164	165	121	159	139	110	57	60	95	1.118
EU-19	0	8	76	965	1.442	1.440	2.097	1.612	1.229	461	759	794	10.884
% by age group	0,0%	0,1%	0,7%	8,9%	13,3%	13,2%	19,3%	14,8%	11,3%	4,2%	7,0%	7,3%	100,0%

* Data 2005 (UK = GB(2006) + NI(2005))
** Data 2004

*** Data 2003
**** Data 2002

Source: CARE Database / EC
Date of query: July 2008

Table 34: Number of car or taxi passenger fatalities by age group by country, 2006

	0-9	10-15	16-17	18-20	21-24	25-29	30-39	40-49	50-59	60-64	65-74	75+	Total
BE	10	4	6	21	15	16	10	8	9	5	10	8	122
CZ	5	11	7	27	29	23	30	11	19	5	16	11	194
DK	2	0	5	7	4	4	3	4	0	2	1	6	38
EE	0	4	1	6	1	3	4	5	4	3	1	2	34
EL	9	7	9	25	20	25	25	19	19	12	25	20	215
ES	39	31	31	73	83	76	106	51	51	33	75	60	709
FR	45	29	41	107	104	51	63	48	51	22	59	95	715
IE***	5	1	8	11	9	3	10	1	5	1	3	4	61
IT**	34	32	51	119	118	83	104	65	61	35	81	77	860
LU****	1	1	3	4	1	2	1	1	0	0	0	0	14
HU	10	17	11	22	16	33	37	32	34	6	16	9	243
MT	0	0	0	0	0	0	0	0	0	0	0	0	0
NL***	12	8	14	24	17	9	12	8	6	3	11	13	137
AT	6	9	9	9	6	9	5	11	11	3	7	12	97
PL*	41	28	56	127	160	129	132	111	123	23	49	45	1.024
PT	3	7	3	21	11	19	14	10	16	6	9	10	130
FI	2	1	7	6	7	8	2	2	7	0	3	4	49
SE	6	2	5	7	9	7	4	7	6	3	4	5	65
UK*	20	39	67	103	69	46	38	28	28	15	38	70	561
EU-19	250	231	334	719	679	546	600	422	450	177	408	451	5.268
% by age group	4,8%	4,4%	6,3%	13,6%	12,9%	10,4%	11,4%	8,0%	8,5%	3,4%	7,7%	8,6%	100,0%

* Data 2005 (UK = GB(2006) + NI(2005))
** Data 2004

*** Data 2003
**** Data 2002

Source: CARE Database / EC
Date of query: July 2008

Table 35: Number of fatalities in heavy goods vehicles and lorries <3,5t by age group by country, 2006

	0-9	10-15	16-17	18-20	21-24	25-29	30-39	40-49	50-59	60-64	65-74	75+	Total
BE	0	0	0	0	1	5	15	9	3	1	1	2	38
CZ	0	0	0	0	4	8	16	9	10	3	3	0	53
DK	0	0	0	0	6	0	7	3	6	1	2	0	25
EE	0	0	0	0	0	1	2	1	1	0	1	0	6
EL	1	0	0	2	4	4	20	20	16	11	15	7	100
ES	2	0	0	12	15	46	89	83	45	17	19	10	340
FR	1	2	3	13	13	17	26	45	30	11	6	6	175
IE***	0	0	1	4	5	0	4	3	1	0	1	0	19
IT**	0	1	1	0	7	2	12	16	9	2	4	1	58
LU****	0	0	0	0	0	0	2	0	1	0	0	0	3
HU	0	1	0	5	5	6	16	15	10	1	1	1	61
MT	0	0	0	0	0	0	0	0	0	0	0	0	0
NL***	2	1	1	5	5	6	12	13	9	3	1	0	58
AT	0	0	0	3	1	2	5	9	4	0	1	0	25
PL*	1	2	1	9	22	24	55	45	46	5	5	0	217
PT	1	0	0	3	9	16	25	22	15	9	10	3	115
FI	0	0	0	0	0	2	2	3	3	0	0	0	10
SE	0	0	0	3	1	1	2	1	1	4	3	0	16
UK*	1	0	1	4	4	11	27	23	17	7	2	0	98
EU-18	9	7	8	63	102	151	337	320	227	75	75	30	1.417
% by age group	0,6%	0,5%	0,6%	4,5%	7,2%	10,7%	23,8%	22,6%	16,0%	5,3%	5,3%	2,1%	100%

* Data 2005 (UK = GB(2006) + NI(2005))
** Data 2004
From 12 HGV/LGV occupant fatalities the age is unknown (0,8%).

*** Data 2003
**** Data 2002

Source: CARE Database / EC
Date of query: August 2008

Table 36: Number of fatalities in buses or coaches by age group by country, 2006

	0-9	10-15	16-17	18-20	21-24	25-29	30-39	40-49	50-59	60-64	65-74	75+	Total
BE	0	0	0	0	0	0	0	0	0	0	0	0	0
CZ	1	0	0	0	0	0	4	2	1	1	1	0	10
DK	0	0	0	0	1	0	1	1	0	0	0	0	3
EE	0	0	0	0	0	0	0	0	1	0	0	0	1
EL	0	0	0	0	1	1	1	1	0	0	0	0	4
ES	3	2	0	2	1	1	5	4	7	2	4	3	35
FR	0	1	0	0	0	0	0	3	4	0	0	0	8
IE***	0	0	0	0	0	0	0	0	0	0	0	0	0
IT**	0	1	0	1	1	1	3	5	3	1	3	0	24
LU****	0	0	0	0	0	0	0	0	0	0	0	0	0
HU	0	0	0	0	1	0	2	0	4	0	1	2	14
MT	0	0	0	0	0	0	0	0	0	0	0	0	0
NL***	0	0	0	0	0	0	0	0	0	0	0	0	0
AT	0	0	0	0	0	0	4	1	2	0	0	1	8
PL*	1	4	2	12	3	1	12	7	5	0	2	1	52
PT	0	0	0	0	0	0	0	0	1	0	0	0	1
FI	0	0	0	1	0	0	0	0	1	0	0	0	2
SE	0	0	0	0	0	0	0	4	0	4	2	0	10
UK*	0	0	1	0	1	0	2	5	1	2	4	12	28
EU-18	5	8	3	16	9	4	34	33	30	10	17	19	200
% by age group	2,5%	4,0%	1,5%	8,0%	4,5%	2,0%	17,0%	16,5%	15,1%	5,0%	8,5%	9,5%	100%

* Data 2005 (UK = GB(2006) + NI(2005))

** Data 2003

Source: CARE Database / EC

** Data 2004

*** Data 2002

Date of query: August 2008

From 12 bus occupant fatalities the age is unknown. (6%)

Table 37: Number of fatalities by person class and age group by country, 2006

	Driver				Passenger				Pedestrian				SUM
	0 to 15	16 to 24	25 to 64	65+	0 to 15	16 to 24	25 to 64	65+	0 to 15	16 to 24	25 to 64	65+	
BE	13	153	515	120	16	47	56	21	6	12	52	52	1.069
CZ	6	113	437	79	18	67	110	27	12	17	100	67	1.063
DK	6	52	103	39	2	20	17	7	9	8	17	26	306
EE	1	23	63	13	4	8	20	4	2	5	42	15	204
EL	12	235	691	130	23	84	142	56	12	15	89	141	1.657
ES	29	446	1.825	257	87	225	440	156	28	41	269	254	4.104
FR	40	845	1.915	476	88	294	292	164	25	48	176	281	4.709
IE***	3	51	117	24	6	37	22	7	8	5	27	22	337
IT**	48	671	2.337	606	88	341	431	178	23	20	259	381	5.625
LU****		5	34	2	2	8	5	0	1	0	2	3	62
HU	10	83	533	93	30	56	163	30	8	13	176	93	1.303
MT	0	3	3	0	0	1	0	0	0	0	3	1	11
NL***	26	160	423	158	28	62	49	24	17	4	37	39	1.028
AT	5	113	300	83	17	30	52	20	8	14	35	53	730
PL*	41	498	1.591	311	79	389	600	108	78	163	939	512	5.444
PT	3	83	413	127	13	48	90	24	8	3	78	65	969
FI	6	55	127	45	3	21	23	7	1	7	22	19	336
SE	6	64	176	59	9	23	38	11	8	2	20	25	445
UK*	43	526	1.196	207	64	254	182	125	77	91	282	251	3.307
EU-19	298	4.179	12.799	2.829	577	2.015	2.732	969	331	468	2.625	2.300	32.709
% by age group	1,5%	20,6%	63,0%	13,9%	8,9%	30,9%	42,0%	14,9%	5,6%	8,0%	44,7%	39,2%	

* Data 2005 (UK = GB(2006) + NI(2005))

** Data 2003

Source: CARE Database / EC

** Data 2004

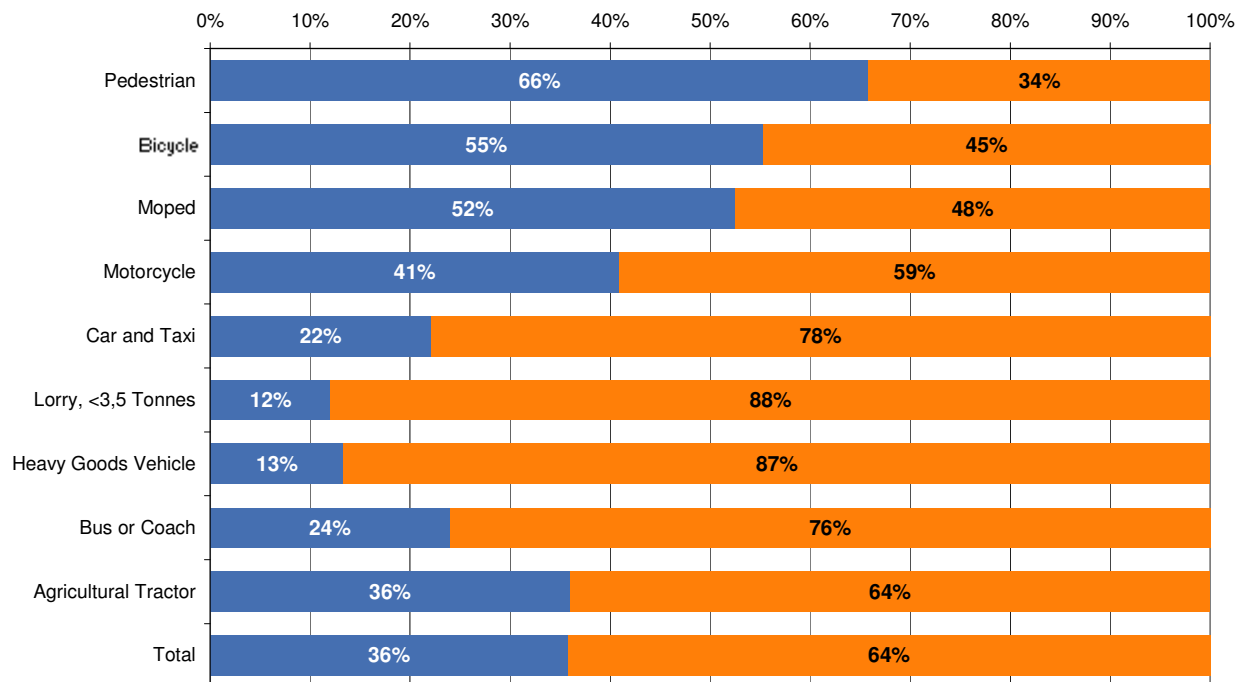
*** Data 2002

Date of query: August 2008

From 588 fatalities the age or person class is unknown (0,8%).

4.2.2 Mode of transport by type of area

Figure 21: Fatalities by type of area and mode of transport (EU-19), 2006¹



Source: CARE Database / EC
Date of query: July 2008

■ Inside urban area ■ Outside urban area



Table 38: Number of fatalities by mode of transport (in which the fatality was travelling) and type of area by country, 2006

	Pedestrian		Bicicle		Moped		Motorcycle		Car or Taxi	
	inside urban area	outside urban area	inside urban area	outside urban area	inside urban area	outside urban area	inside urban area	outside urban area	inside urban area	outside urban area
BE	0	54	34	57	18	18	49	81	89	500
CZ	135	67	72	38	1	2	46	67	157	410
DK	38	22	21	10	14	10	5	16	17	121
EE	25	39	5	8	2	0	1	4	12	94
EL	194	73	15	6	33	24	273	167	224	498
ES	296	317	20	55	133	175	112	368	154	1.941
FR	373	162	79	102	157	160	294	495	409	2.218
IE**2	39	25	0	10	-	-	17	38	28	146
IT**1	539	171	184	112	241	147	500	570	785	2.039
LU****1	5	1	0	1	0	0	0	0	15	25
HU	177	119	92	61	30	12	34	55	147	483
MT	4	0	0	0	0	0	2	0	5	0
NL***	64	33	114	74	55	39	22	73	78	405
AT	69	41	25	23	16	23	18	77	61	323
PL*	1.154	602	324	279	23	30	94	63	808	1.718
PT	100	56	21	19	56	41	74	63	138	237
FI	36	13	23	6	3	10	5	21	26	177
SE	32	23	15	8	7	8	16	38	35	221
UK ²	517	186	97	53	19	10	208	376	440	1.244
EU-19	3.865	2.004	1.141	922	808	709	1.770	2.572	3.628	12.800
% by area	65,9%	34,1%	55,3%	44,7%	53,3%	46,7%	40,8%	59,2%	22,1%	77,9%

	Lorry, under 3.5 Tonnes		Heavy Goods Vehicle		Bus or Coach		Agricultural Tractor		others/ unknown	Total
	inside urban area	outside urban area	inside urban area	outside urban area	inside urban area	outside urban area	inside urban area	outside urban area		
BE	4	30	1	15	0	0	0	2	49	1.069
CZ	6	25	4	18	3	7	2	2	1	1.063
DK	3	21	0	2	0	3	2	0	1	306
EE	0	0	0	6	0	1	0	0	7	204
EL	17	65	5	18	1	3	8	21	12	1.657
ES	6	262	0	135	1	34	6	26	63	4.104
FR	8	112	12	75	1	7	1	11	33	4.709
IE**2	2	17	0	8	0	0	0	0	7	337
IT**1	6	52	4	47	9	15	4	19	181	5.625
LU****1	-	-	0	3	0	0	0	0	12	62
HU	8	28	4	24	10	4	0	0	15	1.303
MT	0	0	0	0	0	0	0	0	0	11
NL***	9	46	1	7	0	0	2	3	3	1.028
AT	1	15	1	14	1	7	3	5	7	730
PL*	0	0	49	168	7	45	32	35	13	5.444
PT	29	70	8	10	0	1	23	18	6	969
FI	0	3	0	7	0	2	0	2	2	336
SE	0	8	1	6	0	10	0	3	14	445
UK*2	11	44	3	40	15	13	0	0	31	3.307
EU-19	110	798	93	603	48	152	83	147	457	32.709
% by area	12,1%	87,9%	13,4%	86,6%	24,0%	76,0%	36,0%	64,0%		

* Data 2005 (UK = GB(2006) + NI(2005))

** Data 2004

* Heavy goods vehicles include lorries < 3,5t

* Motorcycles including mopeds

*** Data 2003

**** Data 2002

Source: CARE Database / EC

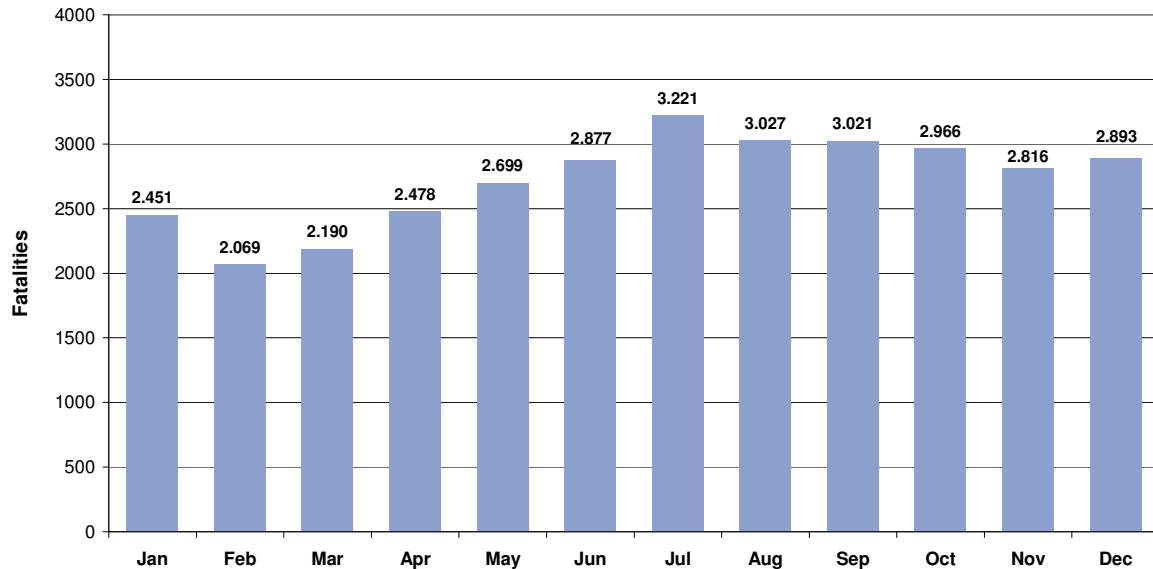
Date of query: July 2008



4.3 Accident characteristics

4.3.1 Various periods of time (month, day of week, hour of day)

Figure 22: Number of fatalities by month (EU-19), 2006¹



Source: CARE database / EC
Date of query: July 2008

Table 39: Number of fatalities by month by country, 2006

	Jan	Feb	Mar	Apr	May	Jun	Jul	Aug	Sep	Oct	Nov	Dec	Total
BE	70	88	85	83	83	87	90	76	119	98	87	103	1.069
CZ	69	62	76	79	91	98	91	94	99	110	110	84	1.063
DK	12	21	19	24	22	31	25	31	25	34	27	35	306
EE	11	7	12	10	13	19	25	19	22	21	21	24	204
EL	105	104	118	134	119	167	177	168	170	130	117	148	1.657
ES	375	282	339	368	367	350	380	331	350	317	321	324	4.104
FR	346	266	314	369	382	392	471	420	425	439	405	480	4.709
IE***	20	21	33	23	38	39	32	26	20	34	30	21	337
IT**	399	348	382	444	528	533	595	542	452	447	496	459	5.625
LU****	2	6	1	3	3	7	6	7	6	7	9	5	62
HU	67	80	66	104	113	97	135	99	155	152	119	116	1.303
MT	0	1	2	0	1	0	1	2	1	0	0	3	11
NL***	95	66	93	80	76	105	97	100	82	78	87	69	1.028
AT	39	34	31	46	69	62	96	52	107	87	58	49	730
PL*	480	307	297	325	410	461	547	569	538	567	483	460	5.444
PT	71	68	66	80	80	66	90	100	73	75	100	99	969
FI	15	22	16	16	27	32	36	45	40	30	24	33	336
SE	21	28	26	38	33	50	50	49	39	28	35	48	445
UK*	254	258	214	252	244	281	277	297	298	312	287	333	3.307
EU-14	2.451	2.069	2.190	2.478	2.699	2.877	3.221	3.027	3.021	2.966	2.816	2.893	32.709
% by month	7,9%	6,6%	7,1%	7,1%	8,4%	9,1%	10,2%	9,4%	8,7%	8,9%	8,3%	8,4%	100,0%

* Data 2005 (UK = GB(2006) + NI(2005))
** Data 2004

*** Data 2003
**** Data 2002

Source: CARE Database / EC
Date of query: July 2008



Figure 23: Total number of fatalities by day of week and person class (EU-18), 2006¹

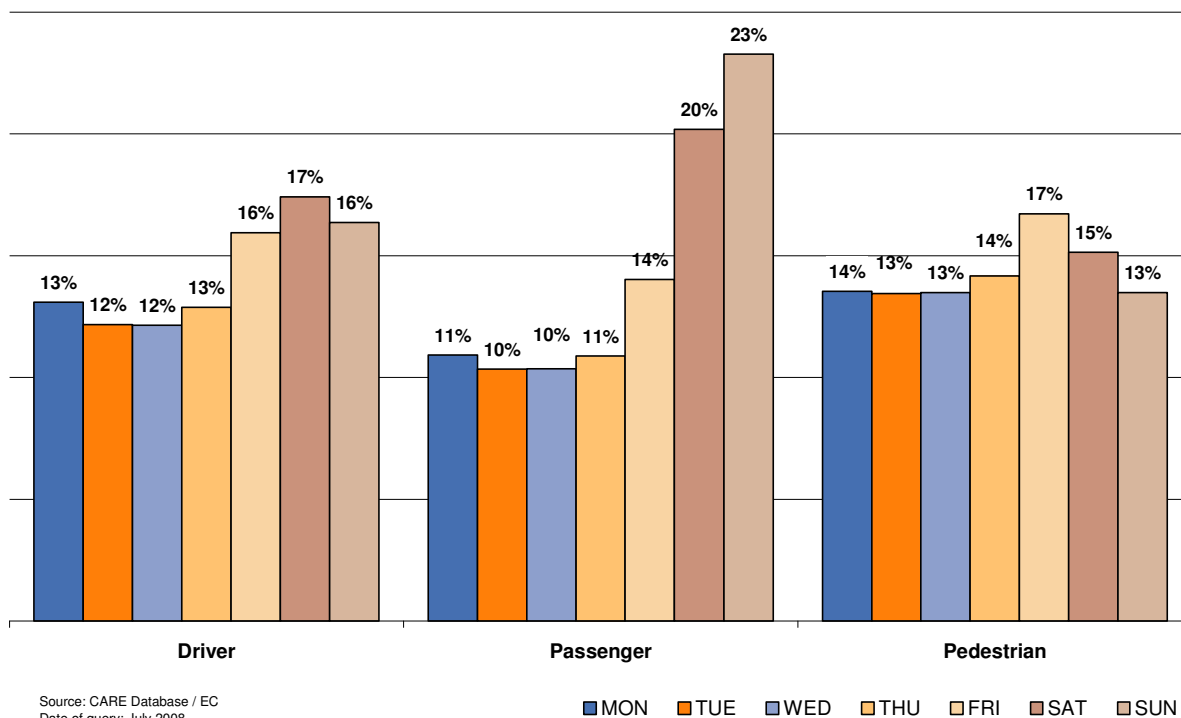


Table 40: Total number of fatalities by day of week by country, 2006

	Mon	Tue	Wed	Thu	Fri	Sat	Sun	Total
BE	150	138	115	115	169	194	188	1.069
CZ	130	131	153	129	190	192	138	1.063
DK	34	32	37	50	63	52	38	306
EE	22	24	26	24	27	49	32	204
EL	239	196	210	187	235	262	328	1.657
ES	525	492	456	477	682	747	725	4.104
FR	560	578	591	608	736	807	829	4.709
IE***	50	30	30	44	54	59	70	337
IT**	680	663	634	721	781	1.039	1.107	5.625
LU****	9	5	9	7	11	16	5	62
HU	177	159	164	162	209	259	173	1.303
MT	2	1	1	3	2	1	1	11
NL***	151	121	129	134	171	175	147	1.028
AT	100	92	92	96	130	120	100	730
PL*	696	656	654	735	879	897	927	5.444
PT	130	111	107	128	146	171	177	969
FI	42	40	55	45	53	65	36	336
SE	49	68	57	51	97	70	53	445
UK*	423	399	414	442	501	565	563	3.307
EU-19	4.169	3.936	3.934	4.158	5.136	5.740	5.637	32.709
% by day	12,7%	12,0%	12,0%	12,7%	15,7%	17,5%	17,2%	100,0%

* Data 2005 (UK = GB(2006) + NI(2005))
** Data 2004

*** Data 2003
**** Data 2002

Source: CARE Database / EC
Date of query: July 2008

Table 41: Number of fatalities by day of week by country, 2006 (drivers)

	Mon	Tue	Wed	Thu	Fri	Sat	Sun	Total
BE	113	108	85	91	136	145	127	805
CZ	87	83	90	72	122	111	74	639
DK	26	21	23	35	36	32	27	200
EE	14	13	11	8	15	25	14	100
EL	148	123	143	119	154	170	220	1.077
ES	340	314	275	319	420	461	440	2.569
FR	415	390	409	448	543	565	556	3.326
IE***	29	20	18	29	25	38	39	198
IT**	444	471	432	478	543	696	675	3.739
LU****	6	4	7	5	7	8	4	41
HU	103	74	96	95	117	139	99	723
MT	2	0	1	1	1	1	0	6
NL***	115	93	98	96	133	131	101	767
AT	67	62	63	64	91	90	64	501
PL*	331	313	297	335	393	408	395	2.472
PT	83	72	72	90	107	101	104	629
FI	33	29	38	31	37	36	29	233
SE	38	48	45	36	58	45	35	305
UK*	264	233	263	264	299	332	321	1.976
EU-19	2.658	2.471	2.466	2.616	3.237	3.534	3.324	20.306
% by day	13,1%	12,2%	12,1%	12,9%	15,9%	17,4%	16,4%	100,0%

* Data 2005 (UK = GB(2006) + NI(2005))
** Data 2004

*** Data 2003
**** Data 2002

Source: CARE Database / EC
Date of query: July 2008

Table 42: Number of fatalities by day of week by country 2006 (passengers)

	Mon	Tue	Wed	Thu	Fri	Sat	Sun	Total
BE	19	17	13	8	14	33	37	141
CZ	23	24	29	17	43	43	43	222
DK	4	3	3	5	15	10	6	46
EE	2	3	5	4	3	12	7	36
EL	41	39	34	31	44	52	72	313
ES	101	96	101	73	135	212	204	922
FR	81	100	101	84	109	158	215	848
IE***	10	7	5	9	12	15	17	75
IT**	127	96	95	145	135	240	326	1.164
LU****	1	0	2	1	3	8	0	15
HU	38	35	31	33	43	65	39	284
MT	0	0	0	1	0	0	0	1
NL***	26	15	12	27	20	29	34	163
AT	11	13	17	13	16	22	27	119
PL*	129	125	132	148	183	210	289	1.216
PT	19	21	13	15	17	47	52	184
FI	4	3	11	5	6	21	4	54
SE	4	9	6	5	25	18	14	81
UK	71	68	65	85	90	120	129	628
EU-19	711	674	675	709	913	1.315	1.515	6.512
% by day	10,9%	10,3%	10,4%	10,9%	14,0%	20,2%	23,3%	100,0%

* Data 2005 (UK = GB(2006) + NI(2005))
** Data 2004

*** Data 2003
**** Data 2002

Source: CARE Database / EC
Date of query: July 2008

Table 43: Number of fatalities by day of week by country, 2006 (pedestrians)

	Mon	Tue	Wed	Thu	Fri	Sat	Sun	Total
BE	17	13	17	16	19	16	24	122
CZ	20	24	34	40	25	38	21	202
DK	4	8	11	10	12	10	5	60
EE	6	8	10	12	9	11	8	64
EL	50	34	33	37	37	40	36	267
ES	84	82	80	85	127	74	81	613
FR	64	88	81	76	84	84	58	535
IE***	11	3	7	6	17	6	14	64
IT**	105	94	106	97	102	102	104	710
LU****	2	1	0	1	1	0	1	6
HU	36	50	37	34	49	55	35	296
MT	0	1	0	1	1	0	1	4
NL***	10	13	19	11	18	15	11	97
AT	22	17	12	19	23	8	9	110
PL*	236	218	225	252	303	279	243	1.756
PT	27	18	23	23	22	23	21	156
FI	5	8	6	9	10	8	3	49
SE	7	11	5	10	11	7	4	55
UK	88	98	86	93	112	113	113	703
EU-19	794	789	792	832	982	889	792	5.869
% by day	13,5%	13,4%	13,5%	14,2%	16,7%	15,1%	13,5%	100,0%

* Data 2005 (UK = GB(2006) + NI(2005))
** Data 2004

*** Data 2003
**** Data 2002

Source: CARE Database / EC
Date of query: July 2008

Table 44: Number of fatalities by hour of day by country, 2006

	0	1	2	3	4	5	6	7	8	9	10	11	12
BE	43	50	34	38	41	52	43	27	33	23	38	34	44
CZ	22	34	29	22	26	38	49	48	41	38	49	38	46
DK	5	5	8	3	4	8	11	11	9	10	16	14	13
EE	4	7	3	4	3	9	8	10	7	10	4	6	8
EL	44	61	53	53	61	66	60	70	64	57	49	81	64
ES	106	103	76	82	87	107	163	206	194	181	144	188	196
FR	142	132	115	94	135	166	156	188	201	185	182	186	165
IE***	21	19	10	16	13	5	6	14	8	6	9	14	22
IT**	137	255	185	204	158	161	186	167	222	196	225	254	226
LU***	5	2	3	3	4	0	3	2	3	1	1	0	1
HU	27	24	21	24	27	51	76	42	60	41	54	43	69
MT	1	1	1	0	0	0	0	0	1	0	1	0	0
NL***	25	25	19	19	15	27	29	52	41	33	56	50	44
AT	16	20	25	17	27	28	28	26	33	33	26	35	41
PL*	73	187	137	132	108	161	212	204	183	202	177	192	221
PT	31	31	27	27	34	26	34	49	34	30	33	46	47
FI	8	15	16	6	6	14	6	11	12	16	9	18	20
SE	16	10	10	13	6	14	15	21	13	14	18	31	23
UK*	121	106	103	80	61	58	76	111	113	102	142	114	147
EU-19	847	1,087	875	837	816	991	1,161	1,259	1,272	1,178	1,233	1,344	1,397
% by hour	2,6%	3,3%	2,7%	2,6%	2,5%	3,0%	3,6%	3,8%	3,9%	3,6%	3,8%	4,1%	4,3%

	13	14	15	16	17	18	19	20	21	22	23	un- known	Total
BE	40	46	41	50	65	67	57	42	61	54	46	-	1.069
CZ	55	79	55	62	55	61	57	52	40	27	33	7	1.063
DK	13	27	24	16	19	11	18	17	19	10	15	-	306
EE	9	14	11	7	15	9	15	15	9	11	5	1	204
EL	63	76	79	91	77	98	91	66	95	71	67	-	1.657
ES	197	203	196	215	245	236	272	210	178	177	142	-	4.104
FR	173	225	282	292	344	361	274	215	183	161	152	-	4.709
IE***	7	10	7	22	25	12	20	24	13	16	11	7	337
IT**	213	215	300	319	369	371	326	274	216	195	207	44	5.625
LU***	3	4	6	2	4	3	3	2	2	3	2	-	62
HU	51	76	69	81	87	80	73	83	63	53	28	-	1.303
MT	0	0	0	1	1	0	1	1	2	0	0	-	11
NL***	45	66	84	66	86	61	38	38	35	42	32	-	1.028
AT	32	40	45	52	34	51	36	20	20	25	20	-	730
PL*	246	243	257	306	397	394	303	365	256	298	190	-	5.444
PT	31	35	50	52	55	84	54	47	51	34	26	-	969
FI	23	19	22	22	19	19	11	12	8	13	11	-	336
SE	34	24	19	36	32	24	19	18	19	9	7	-	445
UK*	153	180	195	226	212	197	182	162	155	152	159	-	3.307
EU-19	1.388	1.582	1.742	1.918	2.141	2.139	1.850	1.663	1.425	1.351	1.153	59	32.709
% by hour	4,2%	4,8%	5,3%	5,9%	6,5%	6,5%	5,7%	5,1%	4,4%	4,1%	3,5%	0,2%	100,0%

* Data 2005 (UK = GB(2006) + NI(2005))
** Data 2004

*** Data 2003
**** Data 2002

Source: CARE Database / EC
Date of query: July 2008



Figure 24: Number of fatalities by hour of day (EU-14), 1997 and 2006¹

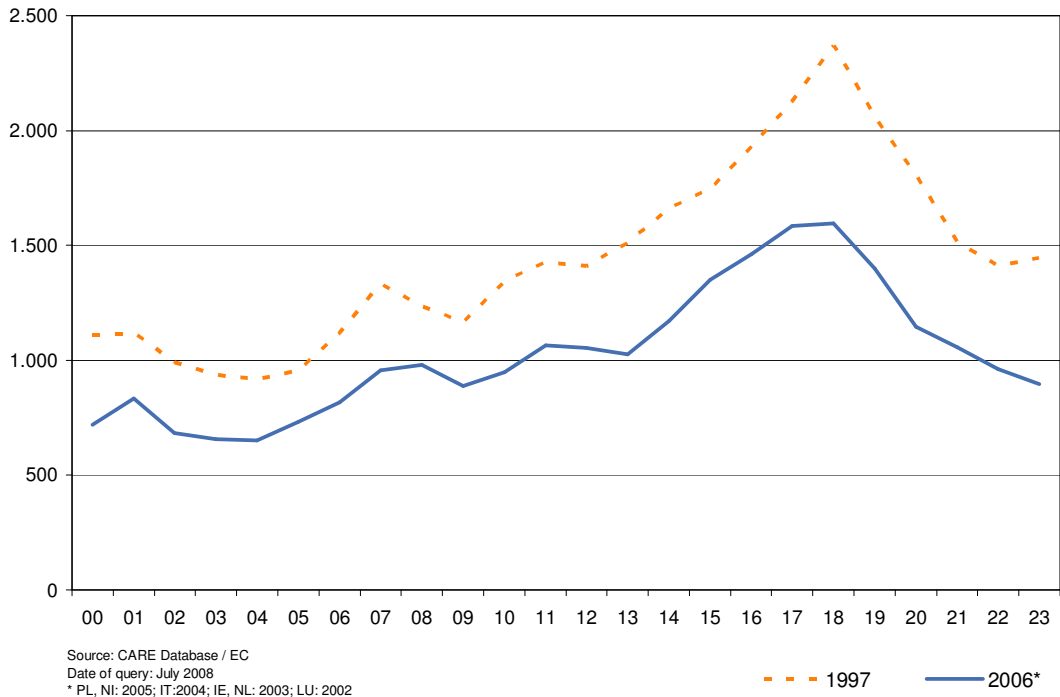


Table 45: Number of pedestrian fatalities by hour of day by country, 2006

	0	1	2	3	4	5	6	7	8	9	10	11	12
BE	2	1	1	3	4	4	0	5	7	1	2	6	5
CZ	5	7	7	5	3	6	11	5	6	6	6	6	7
DK	2	1	1	1	0	2	0	1	2	3	6	3	3
EE	1	1	0	2	0	2	1	3	1	2	1	0	1
EL	8	6	1	4	4	8	10	11	13	15	13	21	11
ES	13	13	12	7	16	12	21	26	30	24	22	38	21
FR	8	7	14	6	8	18	8	25	27	39	35	33	17
IE***	2	7	3	2	1	0	2	3	0	3	4	2	6
IT**	13	18	13	11	7	9	9	24	36	35	37	42	29
LU****	0	0	0	0	1	0	0	0	1	0	0	0	0
HU	6	4	4	3	7	13	17	6	11	11	8	11	15
MT	0	0	1		0	0	0	0	0	0	1	0	0
NL***	4	1	2	0	0	3	0	2	3	3	8	4	7
AT	5	2	5	1	2	3	4	4	4	7	5	6	3
PL*	25	61	34	19	23	28	45	38	44	38	39	43	59
PT	3	1	3	3	0	6	1	9	8	5	6	13	8
FI	0	4	2	0	0	0	1	2	1	1	1	3	5
SE	1	0	2	1	0	3	1	3	1	0	0	3	2
UK*	34	24	29	20	10	7	9	17	16	29	40	25	28
EU-19	132	158	134	88	86	124	140	184	211	222	234	259	227
% by hour	2,3%	2,7%	2,3%	1,5%	1,5%	2,1%	2,4%	3,1%	3,6%	3,8%	4,0%	4,4%	3,9%

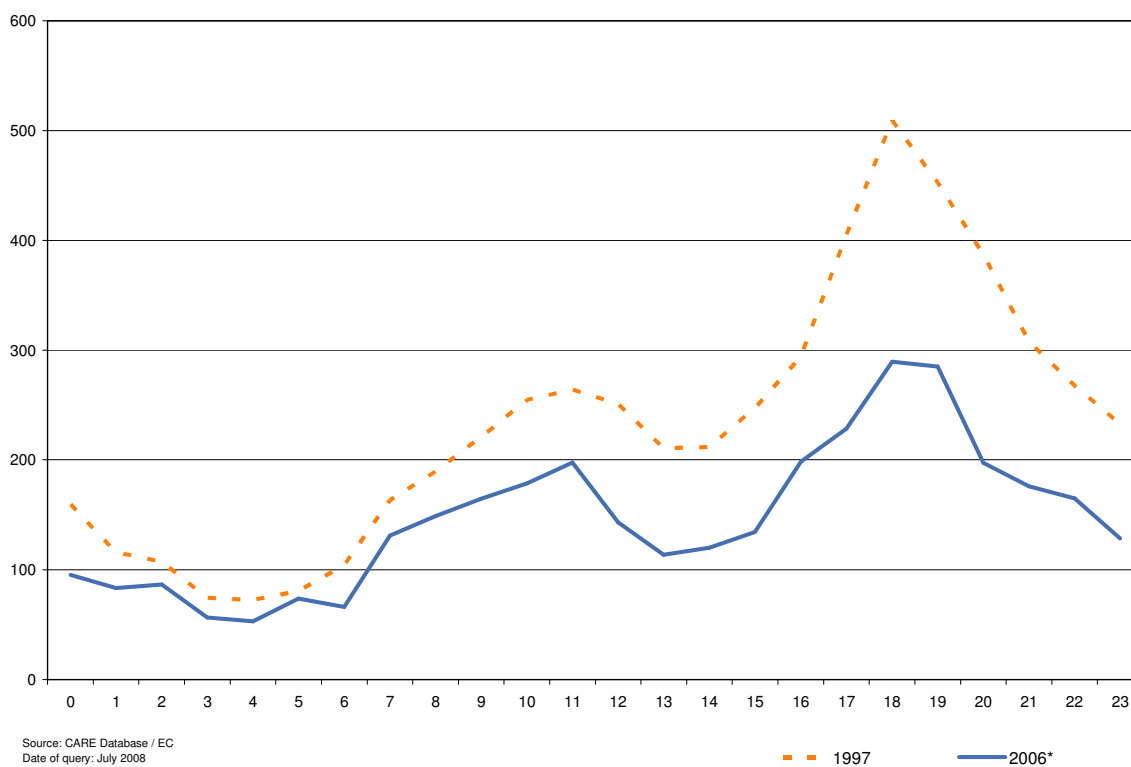
	13	14	15	16	17	18	19	20	21	22	23	un- known	Total
BE	2	6	5	8	12	11	10	5	10	8	4	-	122
CZ	14	9	5	8	11	18	17	13	12	7	6	2	202
DK	1	4	2	1	7	1	7	3	1	2	6	-	60
EE	2	5	2	3	9	5	8	4	4	4	2	1	64
EL	9	8	1	11	7	16	25	15	20	18	12	-	267
ES	25	23	17	27	23	41	61	34	41	40	26	-	613
FR	11	15	31	34	44	59	29	23	15	18	11	-	535
IE***	2	2	2	4	6	1	2	4	4	0	1	1	64
IT**	15	17	24	34	46	76	72	57	30	30	22	4	710
LU****	1	0	2	0	0	0	1	0	0	0	0	-	6
HU	3	11	5	21	21	23	27	23	26	12	8	-	296
MT	0	0	0	0	1	0	0	0	1	0	0	-	4
NL***	3	5	6	4	15	7	4	6	3	6	1	-	97
AT	1	7	5	8	8	11	10	4	2	1	2	-	110
PL*	49	53	53	112	165	183	143	177	120	124	81	-	1.756
PT	5	1	2	3	13	21	16	10	8	8	3	-	156
FI	1	2	0	6	2	5	4	3	2	3	1	-	49
SE	3	3	3	12	5	5	2	2	2	1	0	-	55
UK*	35	27	35	49	45	39	43	33	39	31	39	-	703
EU-19	182	198	200	345	440	522	481	416	340	313	225	8	5.869
% by hour	3,1%	3,4%	3,4%	5,9%	7,5%	8,9%	8,2%	7,1%	5,8%	5,3%	3,8%	0,1%	100,0%

* Data 2005 (UK = GB(2006) + NI(2005))
** Data 2004

*** Data 2003
**** Data 2002

Source: CARE Database / EC
Date of query: July 2008

Figure 25: Number of pedestrian fatalities by hour of day (EU-14), 1997 and 2006



4.3.2 Type of area/road

Figure 26: Number of fatalities by type of area by country, 2006

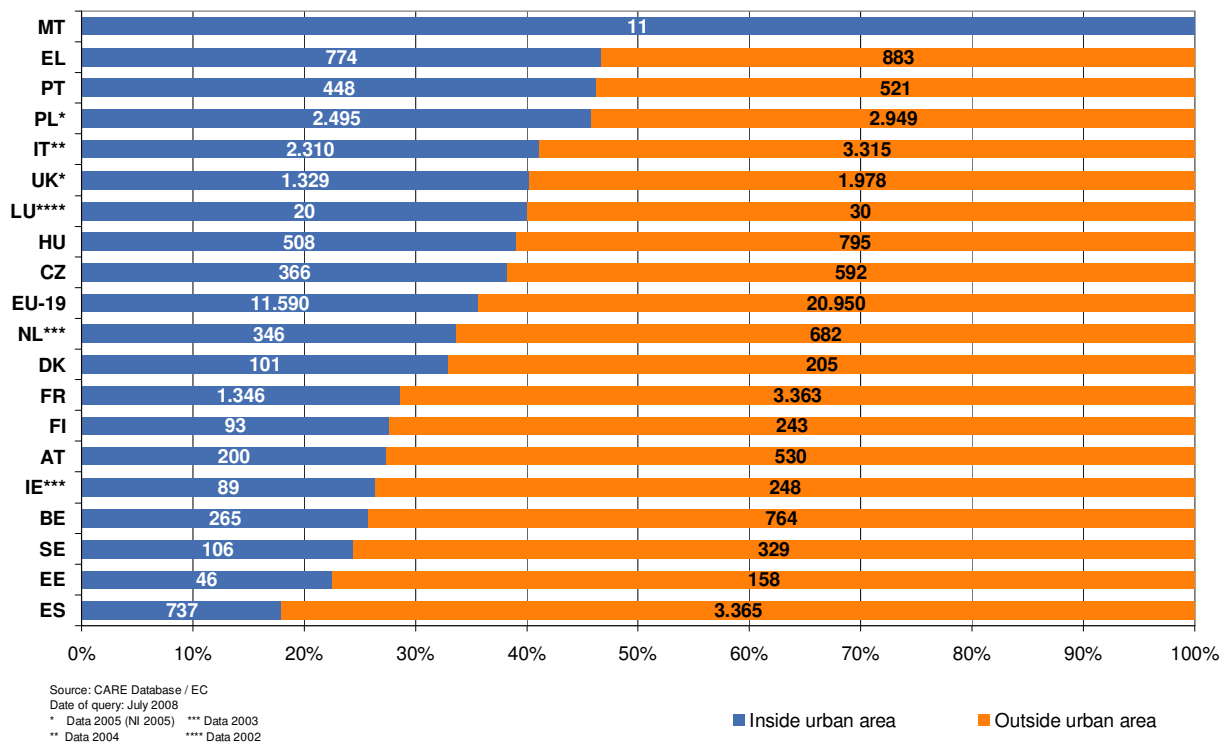


Table 46: Number of fatalities by type of area and road by country, 2006

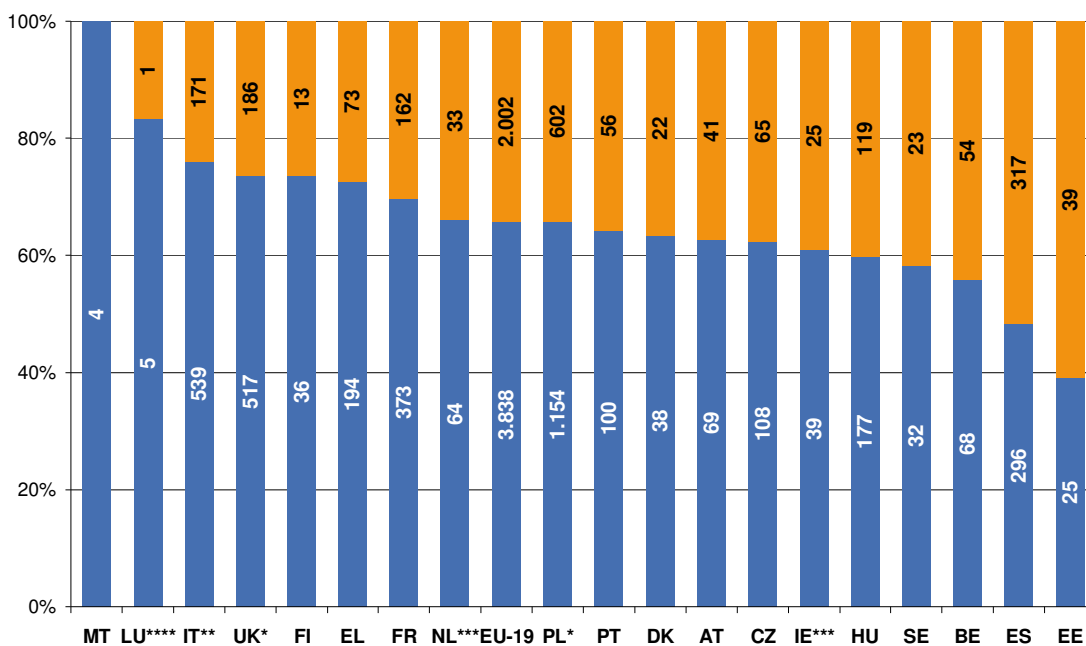
	Inside urban area	Outside urban area			Total
		Motorway	Non-Motorway	Unknown	
BE	265	164	600	0	1.069
CZ	427	37	599	0	1.063
DK	101	16	189	0	306
EE	46		158	0	204
EL	774	147	188	548	1.657
ES	737	235	3.132	0	4.104
FR	1.346	292	3.071	0	4.709
IE***	89	8	240	0	337
IT**	2.310	648	2.667	0	5.625
LU****	20		30	0	62
HU	508	55	740	0	1.303
MT	11	0	0	0	11
NL***	346	151	531	0	1.028
AT	200	74	456	0	730
PL*	2.495	32	2.917	0	5.444
PT	448	84	437	0	969
FI	93	17	226	0	336
SE	106	26	302	1	445
UK*	1.329	185	1.654	139	3.307
EU-19	11.590	2.165	18.097	688	32.709
% by road type	35,6%	6,7%	55,6%	2,1%	100,0%

* Data 2005 (UK = GB(2006) + NI(2005))
** Data 2004

*** Data 2003
**** Data 2002

Source: CARE Database / EC
Date of query: July 2008

Figure 27: Number of pedestrian fatalities by type of area by country, 2006



* Data 2005 (UK = GB(2006) + NI(2005))
** Data 2004 *** Data 2003 **** Data 2002

■ Inside urban area

■ Outside urban area



Table 47: Number of pedestrian fatalities by type of area and road by country, 2006

	Inside urban areas	Outside urban area			Total
		Motorway	Non-Motorway	Unknown	
BE	68	10	44	0	122
CZ	135	4	63	0	202
DK	38	1	21	0	60
EE	25	0	39	0	64
EL	194	13	22	38	267
ES	296	26	291	0	613
FR	373	23	139	0	535
IE**	39	0	25	0	64
IT**	539	31	140	0	710
LU****	5	0	1	0	6
HU	177	9	110	0	296
MT	4	0	0	0	4
NL***	64	7	26	0	97
AT	69	2	39	0	110
PL*	1.154	7	595	0	1.756
PT	100	11	44	0	156
FI	36	1	12	0	49
SE	32	4	19	0	55
UK*	517	14	157	15	703
EU-18	3.865	163	1.787	53	5.869
% by road type	65,9%	2,8%	30,5%	0,9%	100%

* Data 2005 (UK = GB(2006) + NI(2005))
** Data 2004

*** Data 2003
**** Data 2002

Source: CARE Database / EC
Date of query: July 2008

4.3.3 Type of junction

Table 48: Number of fatalities by type of junction by country, 2006

	Not at junction	At junction					Not defined	Total
		Cross road	Level crossing	T or Y junction	Other junction	Round about		
BE	862	0	0	0	194	13	0	1.069
CZ	838	89	33	99	0	0	4	1.063
DK	205	51	2	1	43	4	0	306
EE	146	11	0	15	11	1	20	204
EL	1.498	0	0	0	0	0	0	1.657
ES	3.376	259	0	285	115	69	0	4.104
FR	4.116	243	24	150	123	53	0	4.709
IE***	0	16	0	48	5	4	264	337
IT**	3.984	774	7	0	789	71	0	5.625
LU****	54	6	0	2	0	0	0	62
HU	1.037	234	20	0	9	3	0	1.303
MT	0	0	0	0	0	0	11	11
NL***	704	161	29	122	0	9	0	1.028
AT	402	81	18	26	0	3	200	730
PL*	4.546	892	0	0	0	6	0	5.444
PT	620	30	7	80	2	13	218	969
FI	264	0	0	0	65	0	7	336
SE	9	83	0	0	11	5	337	445
UK*	2.172	169	0	655	243	68	0	3.307
EU-19	24.748	3.087	137	1.476	1.610	322	1.060	32.709
% by junction	75,9%	9,5%	0,4%	4,5%	4,9%	1,0%	3,3%	100,0%

* Data 2005 (UK = GB(2006) + NI(2005))
** Data 2004

*** Data 2003
**** Data 2002

Source: CARE Database / EC
Date of query: July 2008



Table 49: Number of pedestrian fatalities by type of junction by country, 2006

	Not at junction	At junction						Not defined	Total
		Cross-road	Level crossing	T or Y junction	Other junction	Round about	Un-known		
BE	102	0	0	0	20	0	0	0	122
CZ	156	22	9	15	0	0	0	0	202
DK	34	16	0	0	10	0	0	0	60
EE	44	5	0	4	5	1	0	5	64
EL	228	0	0	0	0	0	39	0	267
ES	496	54	0	37	18	8	0	0	613
FR	447	33	0	24	25	6	0	0	535
IE***	0	2	0	15	1	3	0	43	64
IT**	567	71	0	0	68	4	0	0	710
LU****	4	2	0	0	0	0	0	0	6
HU	226	63	5	0	2	0	0	0	296
MT	0	0	0	0	0	0	0	4	4
NL***	71	15	2	8	0	1	0	0	97
AT	57	19	3	6	0	0	0	25	110
PL*	1.437	316	0	0	0	3	0	0	1.756
PT	107	2	0	5	0	1	0	41	156
FI	34	0	0	0	14	0	0	1	49
SE	2	17	0	0	1	0	0	35	55
UK*	374	56	0	204	54	15	0	0	703
EU-19	4.386			1.329				154	5.869
% by junction	74,7%			22,6%				2,6%	100,0%

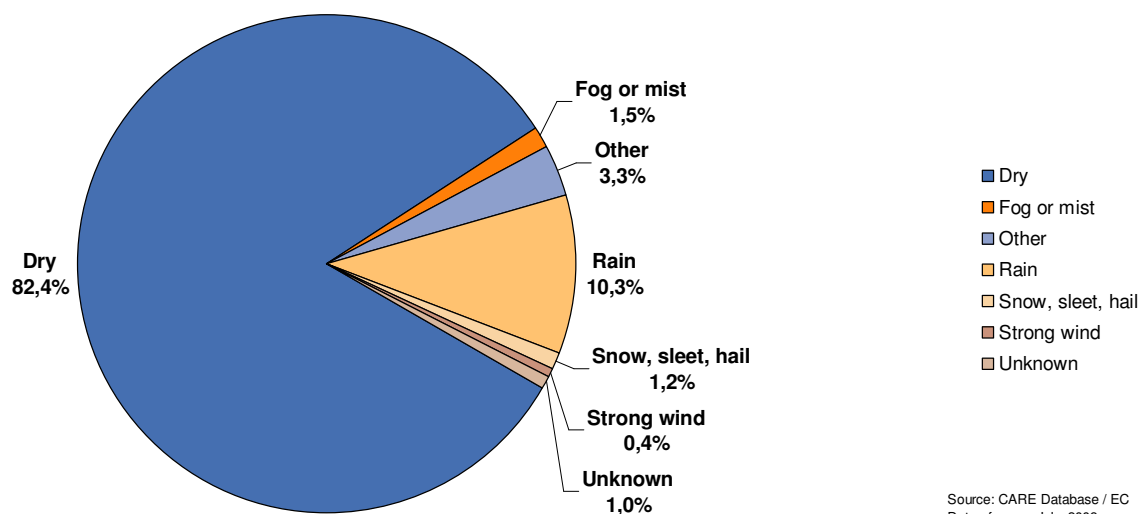
* Data 2005 (UK= GB(2006) + NI(2005))
** Data 2004

*** Data 2003
**** Data 2002

Source: CARE Database / EC
Date of query: August 2008

4.3.4 Weather conditions

Figure 28: Number of fatalities by weather conditions (EU-19), 2006¹



Source: CARE Database / EC
Date of query: July 2008

Table 50: Number of fatalities by weather conditions by country, 2006

	Dry	Fog or mist	Rain	Snow, sleet, hail	Strong wind	Other/Unknown	Total
BE	841	13	94	14	10	97	1.069
CZ	878	0	73	0	1	111	1.063
DK	260	4	31	1	1	9	306
EE	178	6	15	2	1	2	204
EL	1.464	5	144	1	7	36	1.657
ES	3.516	69	392	19	43	65	4.104
FR	3.945	105	515	29	23	92	4.709
IE***	262	10	47	4	2		337
IT**	4.067	56	663	23	12	804	5.625
LU****	21	0	18	0	0	0	62
HU	1.165	39	83	13	3	0	1.303
MT	9	0	1	0	1	0	11
NL***	909	16	75	8	3	0	1.028
AT	636	10	70	12	2	0	730
PL*	4.572	88	530	225	29	0	5.444
PT	791	13	154	0	1	10	969
FI	268	7	27	13	0	21	336
SE	355	7	50	16	0	17	445
UK*	2.815	29	370	13	0	80	3.307
EU-19	26.858	477	3.347	393	139	1.072	32.709
% by weather	82,4%	1,5%	10,3%	1,2%	0,4%	3,3%	100,0%

* Data 2005 (UK = GB(2006) + NI(2005))
** Data 2004

** Data 2003
*** Data 2002

Source: CARE Database / EC
Date of query: July 2008



5 Fatal accidents 2006

5.1 Various periods of time (month, day of week, hour of day)

Table 51: Number of fatal accidents² by month by country, 2006

	Jan	Feb	Mar	Apr	May	Jun	Jul	Aug	Sep	Oct	Nov	Dec	Total
BE	68	84	79	73	78	86	82	69	113	90	83	96	1.001
CZ	52	50	58	69	78	80	63	73	83	88	90	69	853
DK	10	19	17	23	22	28	25	30	23	32	27	28	284
EE	11	6	11	9	13	16	22	16	19	19	17	24	183
EL	98	96	110	114	112	150	158	154	148	116	106	139	1.501
ES	331	252	299	328	323	316	332	296	305	278	287	279	3.626
FR	323	245	291	340	347	369	430	380	401	407	368	425	4.326
IE***	17	21	30	21	32	31	25	24	17	32	30	21	301
IT**	365	322	351	390	478	483	522	478	422	407	448	416	5.082
LU****	2	4	1	3	3	7	3	6	4	7	7	5	52
HU	58	70	61	89	101	87	118	93	141	146	105	104	1.173
MT	0	1	2	0	1	0	1	2	1	0	0	3	11
NL***	89	59	86	66	71	98	85	86	78	73	83	66	940
AT	34	31	29	43	63	57	86	50	97	78	51	45	664
PL*	437	281	257	289	354	416	482	511	474	521	435	421	4.878
PT	59	56	55	67	67	54	73	82	60	62	76	75	786
FI	15	20	15	15	26	32	35	41	40	30	23	32	324
SE	13	27	24	33	32	47	44	45	37	27	30	45	404
UK*	231	239	192	240	228	252	253	271	287	291	264	305	3.053
EU-19	2.213	1.883	1.968	2.212	2.429	2.609	2.839	2.707	2.750	2.704	2.530	2.598	29.442
% by month	7,5%	6,4%	6,7%	7,5%	8,3%	8,9%	10%	9,2%	9,3%	9,2%	8,6%	8,8%	100,0%

* Data 2005 (UK = GB(2006) + NI(2005))
** Data 2004

*** Data 2003
**** Data 2002

Source: CARE Database / EC
Date of query: July 2008

Table 52: Number of fatal accidents² by day of week by country, 2006

	Mon	Tue	Wed	Thu	Fri	Sat	Sun	Total
BE	141	130	109	112	160	182	167	1.001
CZ	104	109	126	110	147	145	112	853
DK	31	32	36	49	57	43	36	284
EE	21	22	23	23	26	40	28	183
EL	218	180	192	170	209	234	298	1.501
ES	459	431	405	447	611	646	627	3.626
FR	515	537	545	571	674	747	737	4.326
IE***	42	28	28	39	50	52	62	301
IT**	626	624	590	665	716	914	947	5.082
LU****	9	5	7	6	9	11	5	52
HU	165	143	145	150	187	228	155	1.173
MT	2	1	1	3	2	1	1	11
NL***	138	114	121	112	161	159	135	940
AT	94	87	84	87	118	109	85	664
PL*	635	597	609	669	784	799	785	4.878
PT	106	89	88	108	119	135	141	786
FI	41	39	50	45	53	60	36	324
SE	49	63	53	50	76	63	50	404
UK*	389	372	385	408	467	524	508	3.053
EU-19	3.785	3.603	3.597	3.824	4.626	5.092	4.915	29.442
% by day	12,9%	12,2%	12,2%	13,0%	15,7%	17,3%	16,7%	100,0%

* Data 2005 (UK = GB(2006) + NI(2005))
** Data 2004

*** Data 2003
**** Data 2002

Source: CARE Database / EC
Date of query: July 2008

² Note that numbers have not been corrected for 30 day definition for EL, ES, FR, IT and PT

Table 53: Number of fatal accidents² by hour of day by country, 2006

	0	1	2	3	4	5	6	7	8	9	10	11
BE	37	45	33	37	34	47	41	26	32	21	36	29
CZ	18	24	26	18	23	28	42	38	27	33	40	32
DK	5	4	7	3	3	8	11	11	9	10	14	13
EE	4	6	3	4	3	9	6	10	7	9	4	4
EL	41	56	48	50	58	61	53	62	62	53	43	74
ES	94	95	68	77	74	95	139	182	165	160	131	168
FR	124	117	106	88	118	147	140	178	193	171	173	178
IE***	16	18	10	13	11	5	5	11	8	6	8	14
IT**	116	227	160	171	125	146	148	156	207	187	213	229
LU****	3	2	2	3	4		1	1	3	1	1	
HU	27	20	21	21	25	46	60	38	54	38	49	37
MT	1	1	1						1		1	
NL***	22	23	19	18	14	23	26	50	41	29	53	41
AT	15	18	21	17	18	27	24	25	31	28	24	30
PL*	68	164	109	105	96	135	174	174	161	173	155	169
PT	25	21	21	24	24	18	28	37	29	26	27	37
FI	8	15	16	6	6	12	6	11	12	16	8	18
SE	14	9	9	13	6	13	12	21	12	14	17	21
UK*	104	101	92	76	58	51	74	105	108	97	130	108
EU-19	742	966	772	744	700	871	990	1.136	1.162	1.072	1.127	1.202
% by hour	2,5%	3,3%	2,6%	2,5%	2,4%	3,0%	3,4%	3,9%	3,9%	3,6%	3,8%	4,1%

	12	13	14	15	16	17	18	19	20	21	22	23	Total
BE	43	39	44	39	47	62	62	56	39	58	49	45	1.001
CZ	39	43	60	46	49	39	53	51	41	30	21	27	853
DK	13	10	24	20	14	19	11	18	15	17	10	15	284
EE	8	8	10	9	6	15	9	13	13	7	10	5	183
EL	59	56	71	67	85	68	86	82	63	78	64	61	1.501
ES	171	184	177	178	188	206	211	241	179	159	154	130	3.626
FR	159	163	203	251	268	316	338	251	199	164	148	133	4.326
IE***	19	6	9	7	22	23	9	17	22	10	14	11	301
IT**	208	197	192	272	290	340	337	302	255	197	179	189	5.082
LU****	1	3	4	4	2	4	3	3	2	2	1	2	52
HU	64	46	70	61	74	80	76	61	73	59	49	24	1.173
MT					1	1		1	1	2			11
NL***	42	39	61	79	60	81	55	35	34	32	36	27	940
AT	38	29	39	42	49	33	47	35	19	18	21	16	664
PL*	202	214	220	234	280	367	365	291	338	241	269	174	4.878
PT	41	25	27	41	43	44	68	45	39	43	30	23	786
FI	20	22	17	22	22	15	19	10	12	8	12	11	324
SE	20	28	24	18	33	30	24	16	16	18	9	7	404
UK*	142	148	159	172	210	199	182	172	147	138	132	148	3.053
EU-19	1.289	1.260	1.411	1.562	1.743	1.942	1.955	1.700	1.507	1.281	1.208	1.048	29.442
% by hour	4,4%	4,3%	4,8%	5,3%	5,9%	6,6%	6,6%	5,8%	5,1%	4,4%	4,1%	3,6%	100,0%

* Data 2005 (UK = GB(2006) + NI(2005))
** Data 2004

*** Data 2003
**** Data 2002

Source: CARE Database / EC
Date of query: July 2008

5.2 Type of area / road

Table 54: Number of fatal accidents² by type of area and road by country, 2006

	Inside urban area	Outside urban area			Total
		Motorway	Non-motorway	Unknown	
BE	261	143	560	0	1.001
CZ	341	23	489	0	853
DK	98	15	171	0	284
EE	44	0	139	0	183
EL	736	130	151	484	1.501
ES	706	199	2.721	0	3.626
FR	1.289	248	2.789	0	4.326
IE***	83	7	211	0	301
IT**	2.212	534	2.336	0	5.082
LU****	17	0	27	0	52
HU	484	47	642	0	1.173
MT	11	0	0	0	11
NL***	335	129	476	0	940
AT	191	65	408	0	664
PL*	2.354	24	2.500	0	4.878
PT	364	71	351	0	786
FI	91	17	216	0	324
SE	102	18	273	1	404
UK*	1.259	162	1.500	132	3.053
EU-19	10.978	1.832	15.960	617	29.442
% by road type	37,3%	6,2%	54,2%	2,1%	100,0%

* Data 2005 (UK = GB(2006) + NI(2005))
** Data 2004

*** Data 2003
**** Data 2002

Source: CARE Database / EC
Date of query: July 2008

5.3 Type of junction

Table 55: Number of fatal accidents² by type of junction by country, 2006

	Not at junction	At junction					Not defined	Total
		cross road	level crossing	other junction	round about	t or y junction		
BE	803	0	0	186	12	0	0	1.001
DK	666	71	28	0	0	84	3	853
DK	189	48	2	40	4	1	0	284
EE	132	9	0	11	1	12	18	183
EL	1.349	0	0	0	0	0	0	1.501
ES	2.957	238	0	105	63	263	0	3.626
FR	3.780	229	19	114	41	143	0	4.326
IE***	0	15	0	5	4	39	238	301
IT**	3.591	706	5	715	65	0	0	5.082
LU****	45	5	0	0	0	2	0	52
HU	920	225	17	8	3	0	0	1.173
MT	0	0	0	0	0	0	11	11
NL***	635	150	25	0	8	119	0	940
AT	370	76	16	0	3	25	174	664
PL*	4.064	808	0	0	6	0	0	4.878
PT	502	26	4	2	10	66	176	786
FI	252	0	0	65	0	0	7	324
SE	9	77	0	11	5	0	302	404
UK*	1.974	166	0	234	66	613	0	3.053
EU-19	22.238	2.849	116	1.496	291	1.367	929	29.442
% by road type	75,5%	9,7%	0,4%	5,1%	1,0%	4,6%	3,2%	100,0%

* Data 2005 (UK = GB(2006) + NI(2005))
 ** Data 2004

*** Data 2003
 **** Data 2002

Source: CAREDatabase / EC
 Date of query: July 2008

5.4 Weather conditions

Table 56: Number of fatal accidents² by weather conditions by country, 2006

	Dry	Fog or mist	Other	Rain	Snow, sleet, hail	Strong wind	Total
BE	790	12	4	87	12	9	1.001
CZ	696	0	24	64	0	1	853
DK	242	4	0	27	1	1	284
EE	162	4	0	12	2	1	183
EL	1.325	5	34	129	1	7	1.501
ES	3.123	54	57	339	14	39	3.626
FR	3.632	91	80	474	28	21	4.326
IE**	234	9	0	43	4	2	301
IT**	3.683	49	730	590	22	8	5.082
LU***	21	0	0	14	0	0	52
HU	1.051	32	0	75	12	3	1.173
MT	9	0	0	1	0	1	11
NL***	835	15	0	67	7	3	940
AT	581	9	0	62	10	2	664
PL*	4.101	80	0	475	196	26	4.878
PT	639	11	2	128	0	1	786
FI	258	6	0	27	12	0	324
SE	320	7	0	46	14	0	404
UK*	2.588	28	37	349	11	0	3.053
EU-19	24.290	416	968	3.009	346	125	29.442
% by wheather	82,5%	1,4%	3,3%	10,2%	1,2%	0,4%	100,0%

* Data 2005 (UK = GB(2006) + NI(2005))
** Data 2004

*** Data 2003
**** Data 2002

Source: CARE Database / EC
Date of query: July 2008

6 Glossary

The CARE glossary provides short definitions for variables used in the Annual Statistical Report, and includes short definitions of CARE common values.

The glossary has two components:

- a) A **definition** of the common value
- b) The **availability** of the common value in the data file for each Member State.

ACCIDENT

ACCIDENT

Definition: Occurs on a public road. Occurs on a private road to which the public has right of access (except BE, NL, PT). Involves at least one moving vehicle (except UK, PT). Involves at least one injured or killed person. Is reported by the police. Self reporting possible (BE, UK, EL, IT, IE). Self reporting not possible (DK, FI, NL, AT, PT). Confirmed suicides excluded (BE, UK, IE, NL, AT, DK, PT). Confirmed suicides included (ES, IT, LU).

Note: The variation in the groups of road and the coverage of the injury categories included in injury accidents, together with differences in the level of self reported accidents, will lead to significant variations in the number of injury accidents reported, and their reporting rate, between Member States.

FATAL ACCIDENT

Definition: Accident with at least one killed person regardless the injury severity of any other involved persons.

Note: See "killed" definition from Injury Severity defined in Person type item (Death within 30 days of a road accident [UN/ECE Geneva 1995 – Statistics of Road Traffic Accidents in Europe and North America], except AT [3 days before 1992], ES [24 hours in CARE; 24 hours before 1993 in publication], FR [6 days], GR [24 hours], IT [7 days], PT [24 hours]. Suicide not included [except DK, ES, FR]. Natural death not included [except LU, SE]).

Data availability: All countries

TIME TYPE ITEMS

MONTH

Definition: Calendar month

Data availability: All countries (except DK)

HOUR

Definition: Period of 60 minutes. Rounded down to whole hours (except EL, ES, IT: rounded to nearest hour).

Note: Winter time is:

- GMT from November to March (DE from 1996 onwards, GB, IE, NI, PT)
- GMT +1 hour from October to March (BE, AT, DK prior to 1996, DK, ES, FR, IT, LU, NL, SE)
- GMT +2 hours from October to March (EL, FI).

Summer time is one hour ahead of winter time:

- GMT +1 hour from April to October (DK from 1996 onwards, GB, IE, NI, PT)
- GMT +2 hours from April to September (AT, BE, DK prior to 1996, DK, ES, FR, IT, LU, NL, SE)
- GMT +3 hours from April to September (EL, FI)

For PT, unknown hour coded as '12' during daytime and '0' during night time

Data availability: All countries (except DK)

DAY OF WEEK

Definition: 24 hour day within 7 day week.

Note: Data calculated by the CARE system from the date of accident, where data is not available in national files (AT from 1992 onwards, BE, FR prior to 1993, PT, SE).

Data availability: All countries.

PERSON CLASS

DRIVER

Definition: Person driving or riding any motorised vehicle or pedal cycle. Person herding animals is not a driver (except BE, AT). Learner driver is a driver (except ES, PT). Learner driver is a driver during a driving test, but not in a driving lesson (DK). Driving instructor is not a driver (except ES, PT). Driving instructor is a driver during a driving lesson, but not during a driving test (DK).

Note: Uninjured drivers are included in the database (except GB, NI, NL: implicitly included in vehicle records only). Data on driving instructors and learner drivers collected separately from 1993 onwards (SE).

Data availability: All countries.

PASSENGER

Definition: Person on or in a vehicle, who is not the driver. Includes person in the act of boarding or alighting from a vehicle (except DK). Learner driver is not a passenger (except ES, PT). Learner driver is a passenger during a driving lesson, but not during a driving test (DK). Driving instructor is a passenger (except ES, PT). Driving instructor is a passenger during a driving test, but not in a driving lesson (DK).

Note: Uninjured passengers not included in the database (except FR, IE, LU; ES, FI in some cases, AT).

Data availability: All countries.

PEDESTRIAN

Definition: Person on foot. Person pushing or holding bicycle (except DK). Person pushing a pram or pushchair. Person leading or herding an animal (except DK, AT). Person riding a toy cycle on the footway (except AT). Person on roller skates, skateboard or skis (except AT). Does not include person in the act of boarding or alighting from a vehicle (except DK, ES).

Note: Uninjured pedestrians not included in the database (except BE, IE, LU, NL implicitly included in element records; DK, FR, FI, AT, SE if they caused the accident; ES not consistently).

Data availability: All countries.

TYPE OF INJURY

INJURED

Definition: Injured with application of correcting coefficient as stated for the 'Killed at 30 days'. Injured in a road accident. Hospitalisation or medical treatment not necessarily required (except FR). Self declaration of injury (DK if slight; FI, GB, IT, IE, NI). Opinion of the police. Aggregation of the following. injury severities: SERIOUSLY INJURED AS REPORTED + SLIGHTLY INJURED + INJURED - 1 COEFFICIENT

Data availability: All countries

FATALITIES

Definition: Death within 30 days of a road accident (UN/ECE Geneva 1995 – Statistics of Road Traffic Accidents in Europe and North America, annex 1). Suicide not included (except DK, ES, FR). Natural death not included (except LU, SE). Corrective factors have been applied to comply with this international definition for the following countries: EL (24 hours), ES (24 hours in CARE; 24 hours before 1993 in publication), FR (6 days), IT (7 days), AT (3 days before 1992), PT (24 hours).

Data availability: All countries.

Member State	Correcting factors		
Greece	K(30) = K * 1.18 up to 1995		
Spain	K(30) = K * 1.3 up to 1992		
	1993 up to 1996:	Outside urban area	Inside urban area
	Driver	K(30)=K+SI*2.46%	K(30)=K+SI*1.02%
	Passenger	K(30)=K+SI*2.29%	K(30)=K+SI*0.94%
	Pedestrian	K(30)=K+SI*7.22%	K(30)=K+SI*3.87%
	1997 up to 2000:	Outside urban area	Inside urban area
	Driver	K(30)=K+SI*2.44%	K(30)=K+SI*1.93%
	Passenger	K(30)=K+SI*2.17%	K(30)=K+SI*1.80%
	Pedestrian	K(30)=K+SI*4.76%	K(30)=K+SI*5.71%
	2001 up to 2004:	Outside urban area	Inside urban area
	Driver	K(30)=K+SI*2.41%	K(30)=K+SI*2.17%
	Passenger	K(30)=K+SI*2.24%	K(30)=K+SI*2.15%
Pedestrian	K(30)=K+SI*6.17%	K(30)=K+SI*4.34%	
France	K(30) = K * 1.09 up to 1993 K(30) = K * 1.057 from 1994 onwards		
Italy	K(30) = K * 1.078		
Austria	K(30) = K * 1.12 only for 1991		
Portugal	K(30) = K * 1.3 up to 1997 K(30) = K * 1.14 from 1998 onwards		
K: number of persons killed, SI: number of persons seriously injured			

GENDER

FEMALE

Definition: Determined by the police (except ES, IT, LU, AT, PT: on the basis of identity documents; DK, FI, SE: on the basis of personal ID number).

Data availability: All countries.

MALE

Definition: Determined by the police (except ES, IT, LU, AT, PT: on the basis of identity documents; DK, FI, SE: on the basis of personal ID number).

Data availability: All countries.

AGE**AGE**

Definition: Length of life of person. Rounded down to whole number of years (except EL, IT, NI: rounded to nearest year).

Note: Age 0 to 1 is exceptionally rounded up (FR, IT, IE, LU, NI, PT). Age over 99 only available for ES, FR (1993 on), NL.

Data availability: All countries.

AREA TYPE**INSIDE URBAN AREA**

Definition: Area inside urban area boundary signs (except IE, UK). Includes dual carriageways and national roads. Can include motorways (except DK, EL, IT). Opinion of the police (DK, SE).

Note: Data approximated from speed limit of 40 mph or less (IE, UK).

Data availability: All countries.

OUTSIDE URBAN AREA

Definition: Area outside urban area boundary signs. Opinion of the police (DK, SE). Includes motorways.

Note: Data approximated from speed limit of over 40 mph (IE, UK).

Data availability: All countries.

MOTORWAY

Definition: Public road with dual carriageways, and at least two lanes each way. Entrance and exit signposted. Road with grade separated interchanges. Road with a central barrier or central reservation. No crossing permitted. No stopping permitted unless in an emergency. Entry prohibited for pedestrians, animals, pedal cycles, mopeds, agricultural vehicles; learner drivers (BE, GB, EL, IE, NI, PT). Access restricted to motor vehicles (DK, FI, AT). Minimum speed between 50 km/h and 80 km/h (except FR, UK). Maximum speed between 100 km/h and 130 km/h.

Data availability: All countries.

MODES OF TRANSPORT – VEHICLE GROUP**AGRICULTURAL TRACTOR**

Definition: Motor vehicle for agricultural use, with wheels or caterpillar tracks, with at least two axles. Driving licence required (DK, EL, ES, FI, GB, IT, IE, LU, AT; not in FR). Maximum speed 30 km/h or 40 km/h.

Data availability: All countries (except DK prior to 1997, AT, FR, GB, IE from 1996 onwards, LU).

Value included in another value:

agricultural machine (FR), construction or agricultural machine (DK, AT prior to 1997), agricultural or industrial tractor (LU), other motor vehicle (GB), other (IE from 1996 onwards).

BUS OR COACH

Definition: Motor vehicle with at least four wheels, used for transporting people. Public or private use. Type D driving licence required (BE, GB, IE, NI). Includes bus, more than 8 and 16 seats, minibus, trolley-bus (except LU), scheduled bus, unscheduled bus, school bus.

Data availability: All countries.

CAR OR TAXI

Definition: Includes car, taxi. Motor vehicle with four wheels. Used to transport only or mainly people. Seating for no more than 8 passengers. Type B driving licence required. Includes taxi-bus (NL).

Data availability: All countries.

HEAVY GOODS VEHICLE

Definition: Includes road tractor, road tractor with semi trailer, lorry over 3,5 tonnes. Motor vehicle with at least four wheels, with a permissible gross vehicle weight of over 3.5 tonnes, used only for the transport of goods. With or without a trailer. Type C driving licence required. Includes lorry, over 3.5 tonnes ; road tractor ; road tractor with semi-trailer ; lorry with trailer ; tanker (except FI).

Note: Lorries cannot systematically be categorised as over 3.5 tonnes (DK, IT).

Data availability: All countries (except DE, IT).

LORRY, LESS THAN 3,5 TONNES

Definition: Motor vehicle with a permissible gross vehicle weight of less than 3.5 tonnes, used only for the transport of goods. Type B driving licence required.

Note: Lorries cannot systematically be categorised as less than 3.5 tonnes (DK, IT).

Data availability: All countries (except DK, IT, LU).

MOPED

Definition: Motor vehicle with two wheels, with an engine size of less than 50 cc. Design speed between 25 km/h and 50 km/h. One or two seats. Minimum age for driver between 14 and 18 (except IT). No driving licence required (ES, FR, FI, GB, IT, PT, SE). Unregistered vehicle (BE, DK, ES, FR, SE).

Data availability: All countries (except IE from 1996 onwards).

Value included in another value:

Two wheeled motor vehicle (IE from 1996 onwards).

MOTORCYCLE

Definition: Motor vehicle with two or three wheels (not three wheeled in DK), with an engine size of more than 50 cc. With a trailer possible (except DK). With a sidecar possible. Registered vehicle (except PT). Type A driving licence required. Includes motor scooter (except FR).

Data availability: All countries (except IE from 1996 onwards).

Value included in another value: two wheeled motor vehicle (IE from 1996 onwards).

OTHER VEHICLE

Definition: Includes other non-motor vehicle, other motor vehicle.

PEDAL CYCLE

Definition: Vehicle with at least two wheels, without engine, moved by pedals or hand cranks. With or without a trailer. With or without passengers. Ridden in the carriageway. Ridden on the pavement (except DK, LU).

Data availability: All countries.

PEDESTRIAN

Definition: Wherever a person's person class has been identified as being pedestrian, its vehicle type is "pedestrian". This as opposed to older version of CARE where a pedestrian didn't have a vehicle type.

Data availability: All countries.

JUNCTION TYPE

JUNCTION

Definition: Road intersection with three or more arms. Not grade separated. Includes T junction, Y junction, crossroad, level crossing (except DK, FI, GB, NI), roundabout (except FR), multiple junction.

Data availability: All countries (except EL).

CROSSROAD

Definition: Road intersection with four arms. Opinion of the police (DK, ES, FI; not AT).

Data availability: All countries (except BE, EL).

NOT AT A JUNCTION

Definition: Position on road more than 20m from a junction or roundabout (GB, IE, NI, NL, AT). Position on road more than 50m from a junction (FR). Opinion of the police (BE, DK, ES, FI, IT, LU, SE).

Data availability: All countries (except EL).

ROUNDAABOUT

Definition: Circular highway. Includes sections of the road leading into it, within 20m (GB, IE, NI, AT). Opinion of the police (DK, ES, FR, IT).

Data availability: All countries (except BE, DK, EL, FI, LU, PT).

T OR Y JUNCTION

Definition: Road intersection with three arms. Includes T junction, Y junction, staggered junction.

Data availability: All countries (except BE, EL, FI, IT, PT).

7 List of tables

Table 1:	Annual number of injury accidents by country, 1997-2006	11
Table 2:	Annual number of fatalities by country, 1997-2006	13
Table 3:	Annual number of fatal accidents by country, 1997-2006.....	14
Table 4:	Annual number of pedestrian fatalities by country, 1997-2006.....	15
Table 5:	Annual number of bicycle fatalities by country (includes all riders and passengers of pedal cycles), 1997-2006	16
Table 6:	Annual number of moped rider & passenger fatalities by country, 1997-2006	16
Table 7:	Annual number of motorcycle rider & passenger fatalities by country, 1997-2006.....	17
Table 8:	Annual number of fatalities in accidents involving cars or taxis by country (Attention: fatalities in cars or taxis plus all opponents fatalities), 1997-2006	18
Table 9:	Annual number of fatalities in accidents involving heavy goods vehicles >3,5t by country (Attention: fatalities in heavy goods vehicles plus all opponents fatalities), 1997-2006	18
Table 10:	Annual number of fatalities in accidents involving lorries <3,5t by country (Attention: fatalities in lorries <3,5t plus all opponents fatalities), 1997-2006	19
Table 11:	Annual number of fatalities by country in accidents involving buses or coaches (Attention: fatalities in buses plus all opponents fatalities), 1997-2006	19
Table 12:	Annual number of fatalities by age group by country, 1997-2002	22
Table 13:	Annual number of fatalities by age group by country, 2003-2006	23
Table 14:	Annual number of female fatalities by country, 1997-2006	24
Table 15:	Annual number of male fatalities by country, 1997-2006	25
Table 16:	Annual number of female fatalities by country, drivers (1997-2006)	26
Table 17:	Annual number of male fatalities by country, drivers (1997-2006)	26
Table 18:	Annual number of female fatalities by country, passengers (1997-2006)	27
Table 19:	Annual number of male fatalities by country, passengers (1997-2006)	27
Table 20:	Annual number of female fatalities by country, pedestrians (1997-2006)	28
Table 21:	Annual number of male fatalities by country, pedestrians (1997-2006)	28
Table 22:	Number of total fatalities by age group by country, 2006	29
Table 23:	Number of female fatalities by age group by country, 2006	29
Table 24:	Number of male fatalities by age group by country, 2006	30
Table 25:	Number of fatalities aged 0 to 15 by mode of transport (in which the fatality was travelling) by country, 2006	30
Table 26:	Number of fatalities aged 16 to 24 by mode of transport (in which the fatality was travelling) by country, 2006	31
Table 27:	Number of fatalities aged 25 to 64 by mode of transport by country, 2006.....	31
Table 28:	Number of fatalities aged 65+ by mode of transport (in which the fatality was travelling) by country, 2006	32
Table 29:	Number of pedestrian fatalities by age group by country, 2006	33
Table 30:	Number of pedal bicycle fatalities by age group by country, 2006.....	34
Table 31:	Number of moped and motorcycle rider fatalities by age group by country, 2006	34
Table 32:	Number of moped and motorcycle passenger fatalities by age group by country, 2006	35
Table 33:	Number of car or taxi driver fatalities by age group by country, 2006	35
Table 34:	Number of car or taxi passenger fatalities by age group by country, 2006	36
Table 35:	Number of fatalities in heavy goods vehicles and lorries <3,5t by age group by country, 2006.....	36
Table 36:	Number of fatalities in buses or coaches by age group by country, 2006.....	37
Table 37:	Number of fatalities by person class and age group by country, 2006.....	37
Table 38:	Number of fatalities by mode of transport (in which the fatality was travelling) and type of area by country, 2006.....	39
Table 39:	Number of fatalities by month by country, 2006	40
Table 40:	Total number of fatalities by day of week by country, 2006	41
Table 41:	Number of fatalities by day of week by country, 2006 (drivers).....	42
Table 42:	Number of fatalities by day of week by country 2006 (passengers).....	42
Table 43:	Number of fatalities by day of week by country, 2006 (pedestrians).....	43
Table 44:	Number of fatalities by hour of day by country, 2006	44
Table 45:	Number of pedestrian fatalities by hour of day by country, 2006	46
Table 46:	Number of fatalities by type of area and road by country, 2006.....	48
Table 47:	Number of pedestrian fatalities by type of area and road by country, 2006.....	49



Table 48:	Number of fatalities by type of junction by country, 2006.....	49
Table 49:	Number of pedestrian fatalities by type of junction by country, 2006.....	50
Table 50:	Number of fatalities by weather conditions by country, 2006.....	51
Table 51:	Number of fatal accidents by month by country, 2006.....	52
Table 52:	Number of fatal accidents ¹ by day of week by country, 2006.....	52
Table 53:	Number of fatal accidents ¹ by hour of day by country, 2006.....	53
Table 54:	Number of fatal accidents by type of area and road by country, 2006.....	54
Table 55:	Number of fatal accidents by type of junction by country, 2006.....	55
Table 56:	Number of fatal accidents by weather conditions by country, 2006.....	56

8 List of figures

Figure 1:	Annual number of fatalities, injury accidents and injured people (EU-25), 1997-2006.....	7
Figure 2:	Fatalities per million inhabitants, 2006 compared to 1997 (EU-25).....	7
Figure 3:	Share of fatalities by area type in EU-19, 2006.....	8
Figure 4:	Distribution of male and female fatalities by person class, 2006 ¹	8
Figure 5:	Distribution of fatalities by mode of transport, 2006.....	9
Figure 6:	Fatalities of children per million inhabitants (aged 0-14 years), 2006.....	9
Figure 7:	Fatalities of seniors per million inhabitants (aged 65+), 2006.....	10
Figure 8:	Percentage change in number of fatalities and injury accidents by country (2006 ¹ compared to 1997).....	11
Figure 9:	Relative evolution of annual number of injury accidents by country (BE – IT), 1997-2006....	12
Figure 10:	Relative evolution of annual number of injury accidents by country (LU-UK), 1997-2006....	12
Figure 11:	Relative evolution of annual number of fatalities by country (BE-IT), 1997-2006.....	13
Figure 12:	Relative evolution of annual number of fatalities by country (LU-UK), 1997-2006.....	14
Figure 13:	Percentage change in number of fatalities by mode of transport in EU-14 (2006 compared to 1997).....	15
Figure 14:	Annual number of fatalities by mode of transport (in which the fatality was travelling, includes driver & passenger), EU-14, 1997-2006.....	17
Figure 15:	Annual number of fatalities involving different modes of transport, EU-14 (Attention: fatalities in specific mode of transport plus all opponents fatalities), 1997-2006.....	20
Figure 16:	Percentage change in number of fatalities by person age group (EU-14), 2006 compared to 1997.....	21
Figure 17:	Increase / decrease of number of fatalities by gender (EU-14), 2006 compared to 1997.....	21
Figure 18:	Annual number of fatalities by year and age, EU-14 (1997 and 2006).....	24
Figure 19:	Annual distribution of fatalities by gender, EU-14 (1996 and 2006).....	25
Figure 20:	Fatalities by age group and mode of transport (EU-19), 2006.....	33
Figure 21:	Fatalities by type of area and mode of transport (EU-19), 2006.....	38
Figure 22:	Number of fatalities by month (EU-19), 2006.....	40
Figure 23:	Total number of fatalities by day of week and person class (EU-18), 2006.....	41
Figure 24:	Number of fatalities by hour of day (EU-14), 1997 and 2006.....	45
Figure 25:	Number of pedestrian fatalities by hour of day (EU-14), 1997 and 2006.....	47
Figure 26:	Number of fatalities by type of area by country, 2006.....	47
Figure 27:	Number of pedestrian fatalities by type of area by country, 2006.....	48
Figure 28:	Number of fatalities by weather conditions (EU-19), 2006.....	51