



**Federal Aviation
Administration**

DOT/FAA/AM-14/15
Office of Aerospace Medicine
Washington, DC 20591

2013 Aerospace Medical Certification Statistical Handbook

Valerie J. Skaggs
Ann I. Norris

Civil Aerospace Medical Institute
Federal Aviation Administration
Oklahoma City, OK 73125

December 2014

Final Report



NOTICE

This document is disseminated under the sponsorship of the U.S. Department of Transportation in the interest of information exchange. The United States Government assumes no liability for the contents thereof.

This publication and all Office of Aerospace Medicine technical reports are available in full-text from the [Federal Aviation Administration website](#).

Technical Report Documentation Page

1. Report No. DOT/FAA/AM-14/15		2. Government Accession No.		3. Recipient's Catalog No.	
4. Title and Subtitle 2013 Aerospace Medical Certification Statistical Handbook				5. Report Date December 2014	
				6. Performing Organization Code	
7. Author(s) Skaggs VJ, Norris AI				8. Performing Organization Report No.	
9. Performing Organization Name and Address FAA Civil Aerospace Medical Institute P.O. Box 25082 Oklahoma City, OK 73125				10. Work Unit No. (TRAIS)	
				11. Contract or Grant No.	
12. Sponsoring Agency name and Address Office of Aerospace Medicine Federal Aviation Administration 800 Independence Ave., S.W. Washington, DC 20591				13. Type of Report and Period Covered	
				14. Sponsoring Agency Code	
15. Supplemental Notes					
16. Abstract <p>Introduction. The annual Aerospace Medical Certification Statistical Handbook reports descriptive characteristics of all active U.S. civil aviation airmen and the aviation medical examiners (AMEs) that perform the required medical examinations. The 2013 annual handbook documents the most recent and most widely relevant data on active civil aviation airmen and AMEs.</p> <p>Methods. Medical certification records from 2008-2013 were selected from the Document Imaging Workflow System (DIWS), which is the FAA medical certification database. All medical data were abstracted from the most recent medical examinations with the exception of medical conditions which were historical and current. Only those with a non-expired medical certificate remained in the dataset. AME records were selected from the Aviation Medical Examiner Information System (AMEIS). The current status of each AME was determined for each year of the study period from 2011-2013, retaining only those with an active status.</p> <p>Airman variables include age, issued and effective medical classes, height, weight, BMI, gender, select medical conditions, special issuances, and FAA region of residence. AME variables include AME type, age, gender, medical specialty, pilot license status, senior examiner status, and region.</p> <p>Results. Airmen: As of December 31, 2013, there were 572,406 medically certified airmen age 16 and older, and 33.8%, 21.0%, and 45.2% were issued a Class 1, Class 2, and Class 3 medical certificate, respectively. Across all medical classes, the average age was 43 years and 93.5% of the airmen were male. The mean BMI for both females and males was 24.1 and 27.2 respectively. Six percent of issued certificates required a special issuance. The most commonly reported medical condition was hypertension with medication at 10.9%.</p> <p>AME: Of the 3,324 active AMEs, 93.3% were civilian, 2.0% federal, and 4.7% military. Nearly 49% reported their medical specialty as family practice. Their average age was 60.3 years; the majority (53.0%) did not hold a pilot license, and 87.7% were male.</p> <p>Summary. This report contains widely requested data on the active U.S. civil airman population. This report is updated annually and is used by the aerospace community, including FAA leadership, aerospace researchers, advocacy groups, legislative staff, and the general public.</p>					
17. Key Words Pilot Medical Certification, Pilot Demographics, Pilot Medical Conditions, Pilot Statistics, Aviation Medical Examiners			18. Distribution Statement Document is available to the public through the Internet: www.faa.gov/go/oamtechreports		
19. Security Classif. (of this report) Unclassified		20. Security Classif. (of this page) Unclassified		21. No. of Pages 40	22. Price

CONTENTS

2013 AEROSPACE MEDICAL CERTIFICATION STATISTICAL HANDBOOK

INTRODUCTION	1
METHODS	1
RESULTS.	1
SUMMARY	1
Table 1. FAA Aviation Medical Examiners by Year and Type.	2
SECTION I. AVIATION MEDICAL EXAMINERS	2
Table 2. Designated FAA Aviation Medical Examiners by Year and Region	3
Figure 1. Distribution of Newly Appointed FAA Aviation Medical Examiners by Region and Year	4
Figure 2. Distribution of Active FAA Aviation Medical Examiners by Region and Year	5
Figure 3. Distribution of Active FAA Aviation Medical Examiners by Region	6
Figure 4. Medical Practice Specialty of Active FAA Aviation Medical Examiners	6
Figure 5. Gender Distribution of Active FAA Aviation Medical Examiners	7
Table 3. Pilot License Type of Active FAA Aviation Medical Examiners	8
Figure 6. Pilot License Type of Active FAA Aviation Medical Examiner	8
Table 4. Senior Examiner Status of Active FAA Aviation Medical Examiners	9
Figure 7. Senior Examiner Status of Active FAA Aviation Medical Examiners by Region	9
Table 5. Age by Gender of Active FAA Aviation Medical Examiners	10
Figure 8. Age Group of Active FAA Aviation Medical Examiners	10
SECTION II. AIRMAN MEDICAL CERTIFICATION	11
Table 6. Number of Medical Applications Processed by Year	11
Table 7. Issued and Effective Medical Class by Region	12
Table 8. Issued Medical Class by State of Residence and Gender	13
Figure 9. Issued Medical Class by Region and Gender	14
Table 9. Age as of 12/31/2013 of all Active Airmen by Effective Medical Class	15
Table 10. Age Groups of all Active Airmen by Effective Medical Class.	15
Figure 10. Age Groups as of 12/31/2013 of all Active Airmen	16
Figure 11. Age Groups as of 12/31/2013 by Effective Medical Class for all Active Airmen.	16
Table 11. Age at Exam Summary Statistics for Active Airmen by Issued Medical Class	17
Table 12. Age Groups for all Active Airmen by Issued Medical Class	17
Figure 12. Age Group of all Active Airmen at Time of Exam	18
Figure 13. Age Groups by Issued Medical Class for all Active Airmen at Time of Exam	19
Table 13. Age at Time of Exam by Issued Medical Class and Gender	19
Figure 14. Age Group at Time of Exam by Gender and Issued Medical Class	20
Table 14. Height (inches) of all Active Airmen by Gender and Issued Medical Class	21
Table 15. Height (inches) by Issued Medical Class and Gender	21
Figure 15. Height (inches) by Gender and Issued Medical Class	22
Figure 16. Height (inches) by Issued Medical Class – Females only	23
Figure 17. Height (inches) by Issued Medical Class – Males only.	23
Table 16. Weight (pounds) of all Active Airmen by Gender and Issued Medical Class	24
Table 17. Weight (pounds) by Issued Medical Class and Gender	24
Figure 18. Weight (pounds) by Gender and Issued Medical Class	25
Figure 19. Weight (pounds) by Issued Medical Class – Females only	26
Figure 20. Weight (pounds) by Issued Medical Class – Males only.	26
Table 18. BMI of all Active Airmen by Gender and Issued Medical Class	27

Table 19. BMI Category by Issued Medical Class and Gender 27

Figure 21. BMI by Gender and Issued Medical Class 28

Figure 22. BMI by Issued Medical Class – Females only 29

Figure 23. BMI by Issued Medical Class – Males only 29

Table 20. Special Issuance by Issued Medical Class, Gender, Age, and Body Mass Index 30

Figure 24. Special Issuance by Issued Medical Class 31

Figure 25. Special Issuance by Age Group at Time of Exam 31

Figure 26. Special Issuance by BMI Category 32

Table 21. Top 15 Reported Medical Conditions 33

Table 22. Medical Conditions by Issued Medical Class 34

2013 AEROSPACE MEDICAL CERTIFICATION STATISTICAL HANDBOOK

INTRODUCTION

The annual Aerospace Medical Certification Statistical Handbook reports descriptive characteristics of all active U.S. civil aviation airmen and the aviation medical examiners (AMEs) that perform the required medical examinations. The 2013 annual handbook documents the most recent and most widely relevant data on active civil aviation airmen and AMEs.

METHODS

Medical certification records from 2008-2013 were selected from the Document Imaging Workflow System (DIWS), which is the FAA medical certification database. All medical data were abstracted from the most recent medical examinations with the exception of medical conditions which were historical and current. Only those with a non-expired medical certificate remained in the dataset.

AME records were selected from the Aviation Medical Examiner Information System (AMEIS). The current status of each AME was determined for each year of the study period from 2011-2013, retaining only those with an active status.

Airman variables include age, issued and effective medical classes, height, weight, BMI, gender, select medical conditions, special issuances, and FAA region of residence. AME variables include AME type, age, gender, medical specialty, pilot license status, senior examiner status, and region.

RESULTS

Airmen. As of December 31, 2013, there were 572,406 medically certified airmen age 16 and older, and 33.8%, 21.0%, and 45.2% were issued a Class 1, Class 2, and Class 3 medical certificate, respectively. Across all medical classes, the average age was 43.0 years and 93.5% of the airmen were male. The mean BMI for both females and males was 24.1 and 27.2 respectively. Six percent of issued certificates required a special issuance. The most commonly reported medical condition was hypertension with medication at 10.9%.

AMEs. Of the 3,324 active AMEs, 93.3% were civilian, 2.0% federal, and 4.7% military. Nearly 49% reported their medical specialty as family practice. Their average age was 60.3 years; the majority (53.0%) did not hold a pilot license, and 87.7% were male.

SUMMARY

This report contains widely requested data on the active U.S. civil airman population. This report is updated annually and is used by the aerospace community, including FAA leadership, aerospace researchers, advocacy groups, legislative staff, and the general public.

SECTION I. AVIATION MEDICAL EXAMINERS

This section characterizes the aviation medical examiners during 2013 with some comparative data from 2011 and 2012. All analyses represent data through December 31, 2013 unless otherwise noted. Data may slightly fluctuate annually from systematic changes and corrections to the records.

An aviation medical examiner (AME) is a physician authorized by the Federal Aviation Administration (FAA) to perform airmen

physical examinations for issuance of FAA medical certificates. These physicians are designated according to the geographical distribution of airmen. There are also military facilities (installations) designated to perform FAA airmen examinations of military personnel for issuance of second- and third-class certificates.

AME seminars are held in each region and at Oklahoma City's Civil Aerospace Medical Institute to acquaint these physicians with the regulations and procedures governing the issuance of FAA medical certificates.

Table 1. FAA Aviation Medical Examiners by Year and Type.

AME Type	2011 Number (Percent of Total)	2012 Number (Percent of Total)	2013 Number (Percent of Total)
Civilian	3,272 (94.2)	3,218 (93.8)	3,102 (93.3)
Federal	76 (2.2)	68 (2.0)	67 (2.0)
Military	125 (3.6)	145 (4.2)	155 (4.7)
Total	3,473	3,431	3,324

Table 2. Designated FAA Aviation Medical Examiners by Year and Region

Region	Newly Appointed Number (Percent of Total by Year)			All Active Number (Percent of Total by Year)		
	2011	2012	2013	2011	2012	2013
	Alaskan	1 (0.8)	1 (0.6)	1 (0.8)	65 (1.9)	63 (1.8)
Central	2 (1.7)	8 (5.0)	5 (3.8)	174 (5.0)	177 (5.2)	170 (5.1)
Eastern	2 (1.7)	11 (6.9)	9 (6.8)	379 (10.9)	373 (10.9)	355 (10.7)
Federal/Official	2 (1.7)	2 (1.3)	3 (2.3)	95 (2.7)	88 (2.6)	87 (2.6)
Great Lakes	13 (10.7)	16 (10.1)	16 (12.0)	490 (14.1)	475 (13.8)	459 (13.8)
International	25 (20.7)	16 (10.1)	19 (14.3)	318 (9.2)	321 (9.4)	320 (9.6)
Military	26 (21.5)	43 (27.0)	28 (21.1)	122 (3.5)	142 (4.1)	152 (4.6)
New England	2 (1.7)	7 (4.4)	2 (1.5)	117 (3.4)	115 (3.4)	102 (3.1)
Northwest Mountain	12 (9.9)	11 (6.9)	8 (6.0)	346 (10.0)	336 (9.8)	318 (9.6)
Southern	14 (11.6)	17 (10.7)	20 (15.0)	677 (19.5)	665 (19.4)	655 (19.7)
Southwest	20 (16.5)	18 (11.3)	13 (9.8)	410 (11.8)	398 (11.6)	383 (11.5)
Western-Pacific	2 (1.7)	9 (5.7)	9 (6.8)	280 (8.1)	278 (8.1)	269 (8.1)
Total	121	159	133	3,473	3,431	3,324

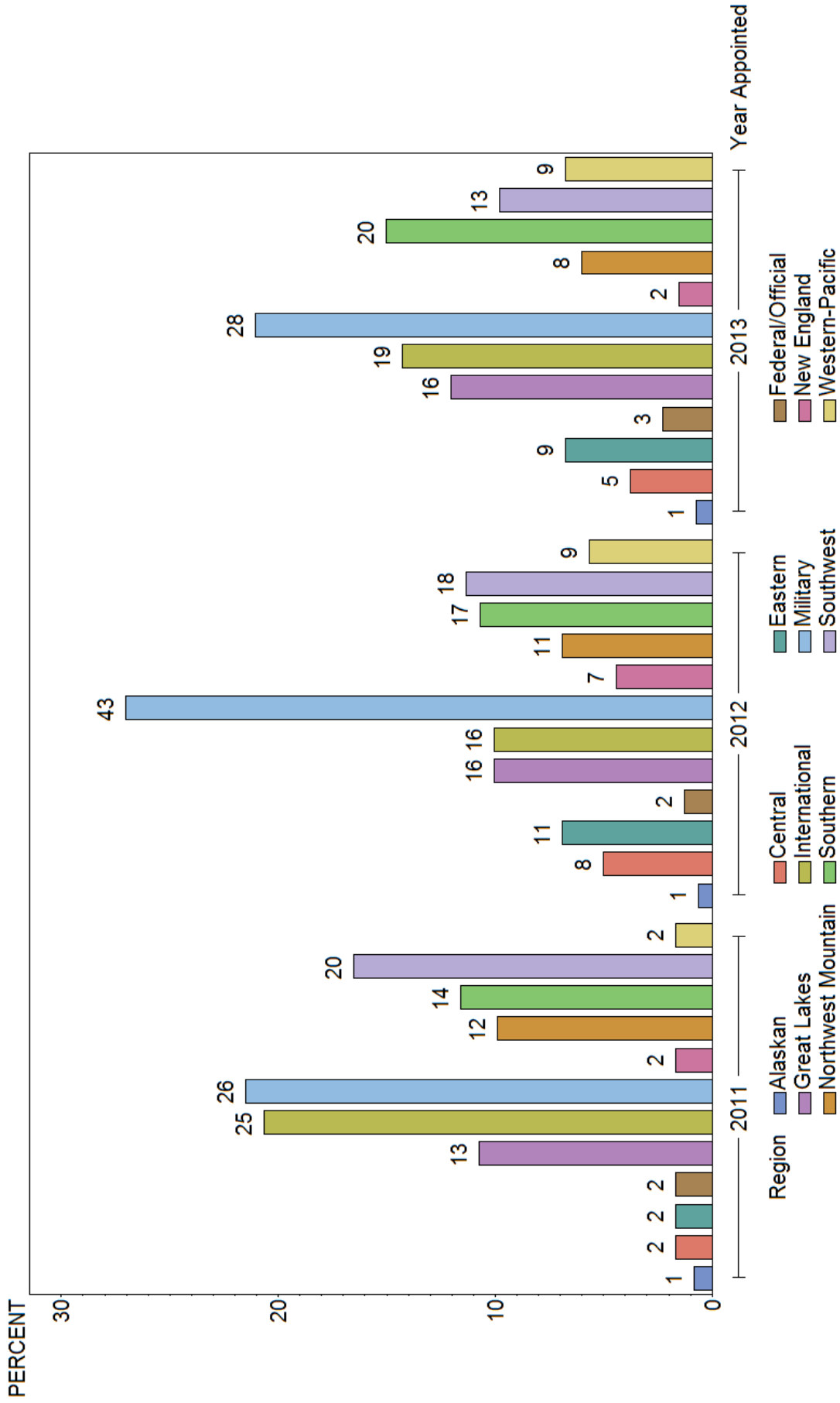


Figure 1. Distribution of Newly Appointed FAA Aviation Medical Examiners by Region and Year

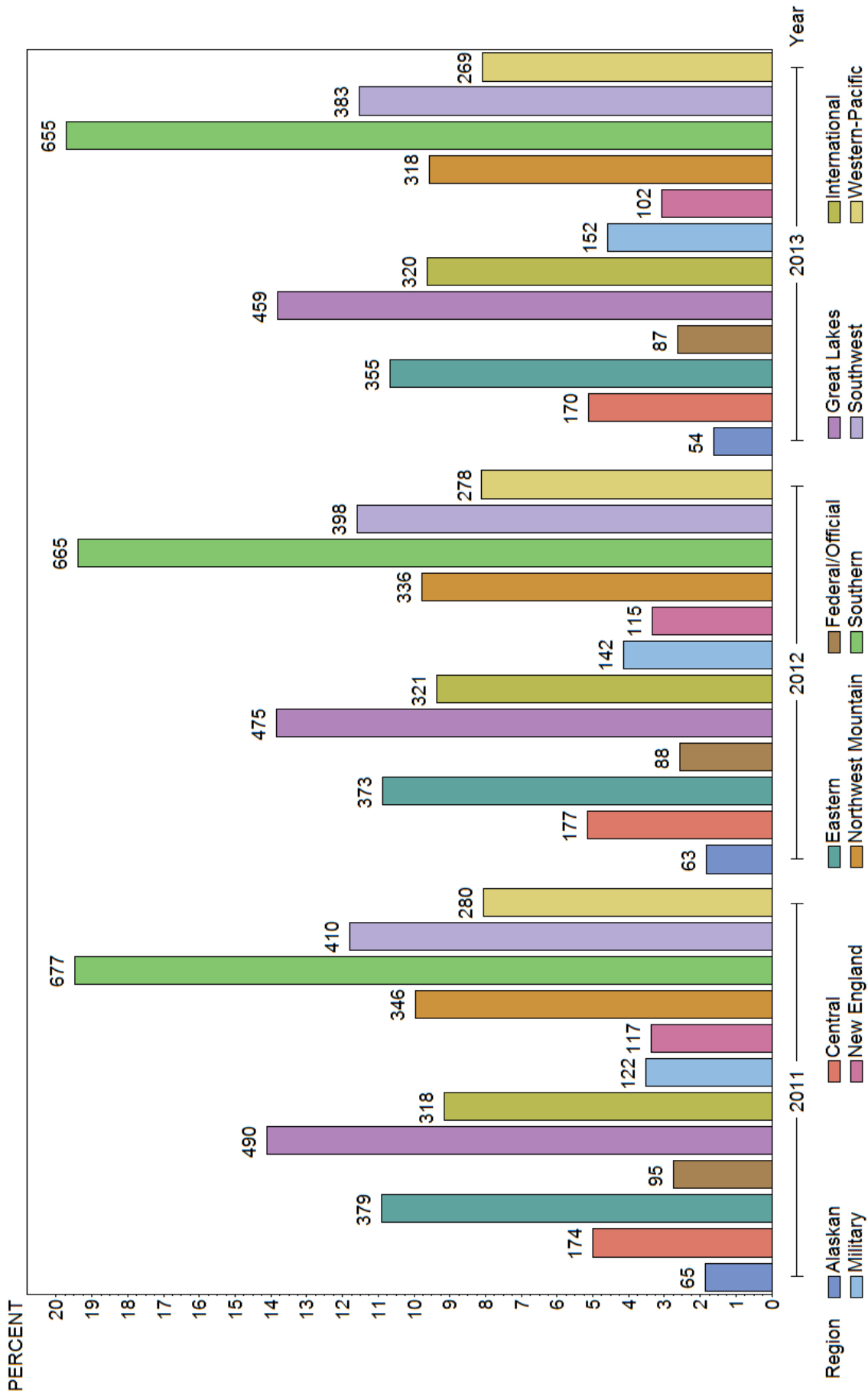


Figure 2. Distribution of Active FAA Aviation Medical Examiners by Region and Year

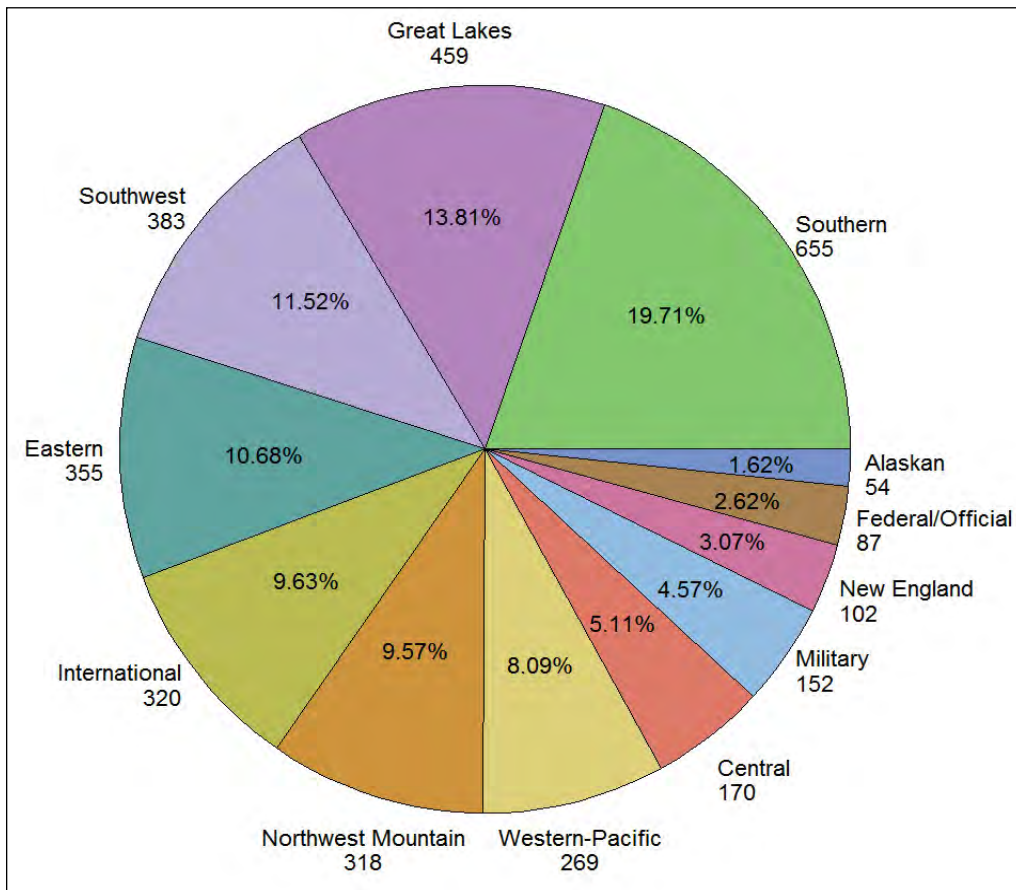


Figure 3. Distribution of Active FAA Aviation Medical Examiners by Region

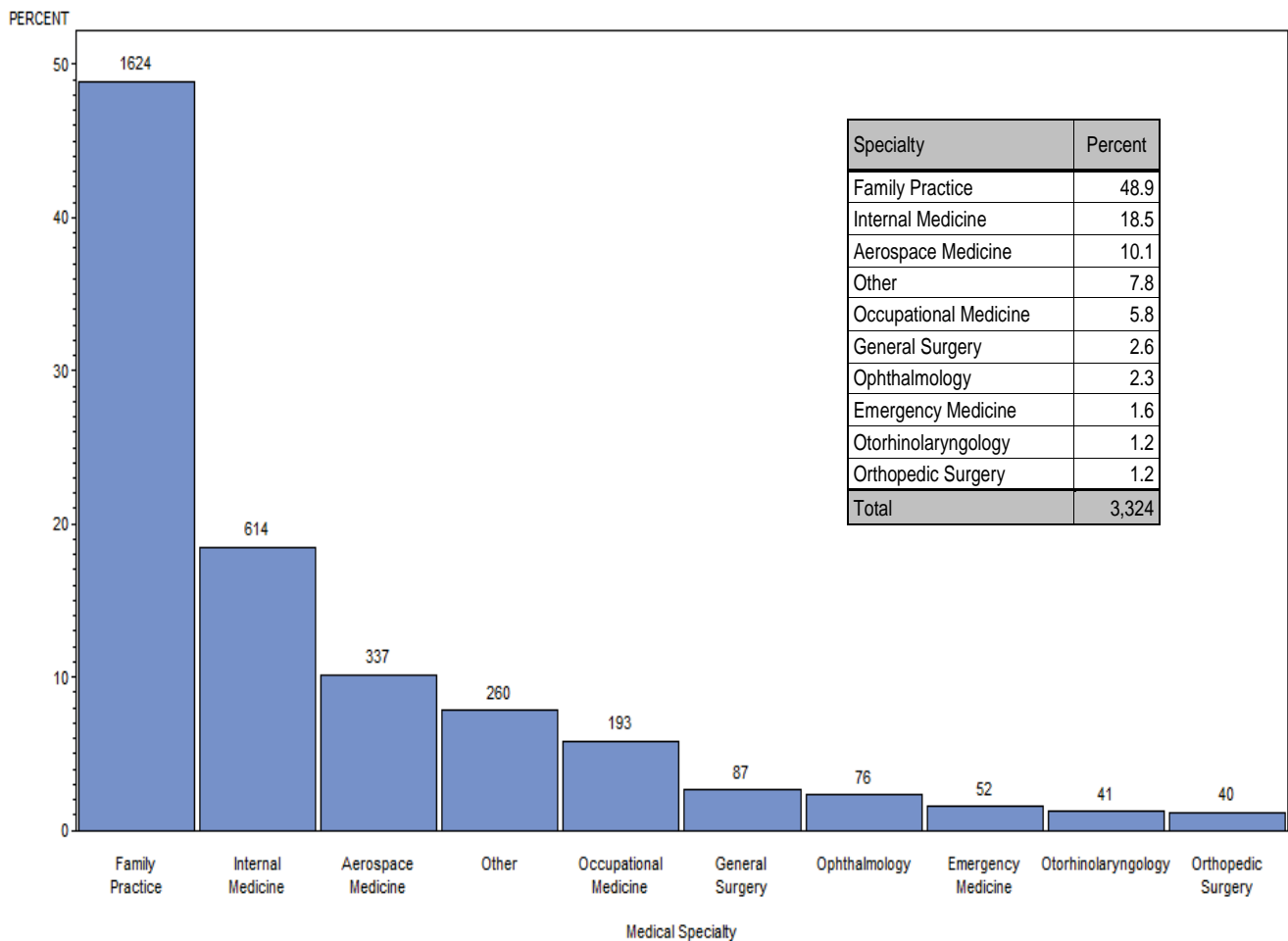


Figure 4. Medical Practice Specialty of Active FAA Aviation Medical Examiners

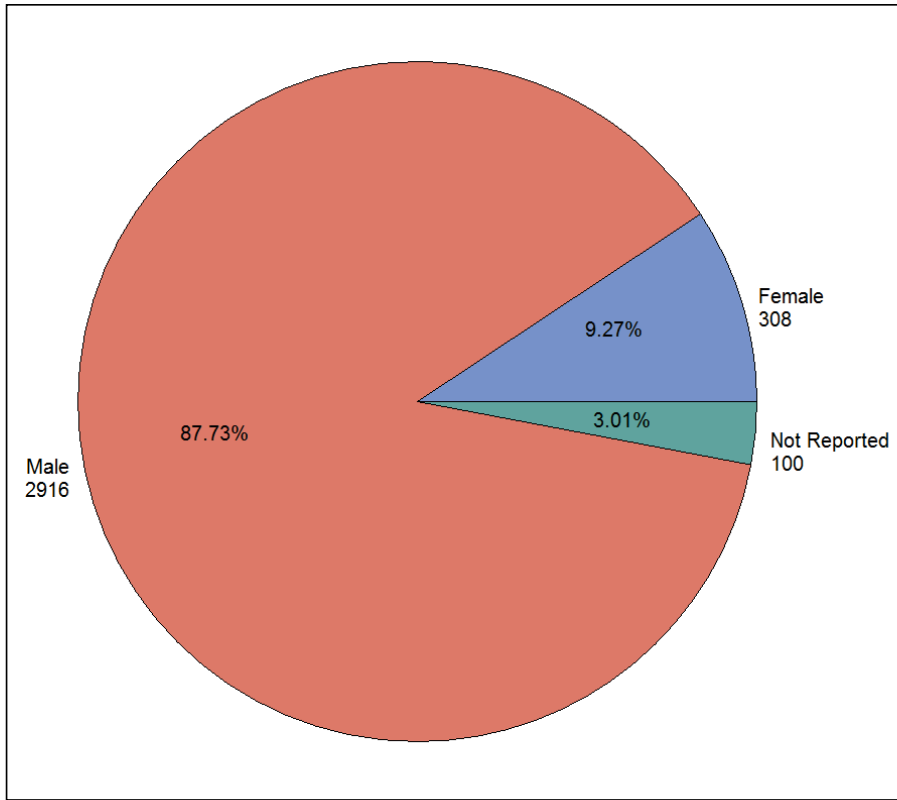


Figure 5. Gender Distribution of Active FAA Aviation Medical Examiners

Table 3. Pilot License Type of Active FAA Aviation Medical Examiners

Pilot License Type	Number (Percent)
Commercial – Instrument Flight Rules	142 (4.3)
Commercial	89 (2.7)
Private – Instrument Flight Rules	117 (3.5)
Private	1,051 (31.6)
Student	123 (3.7)
Other	40 (1.2)
None	1,762 (53.0)
Total	3,324

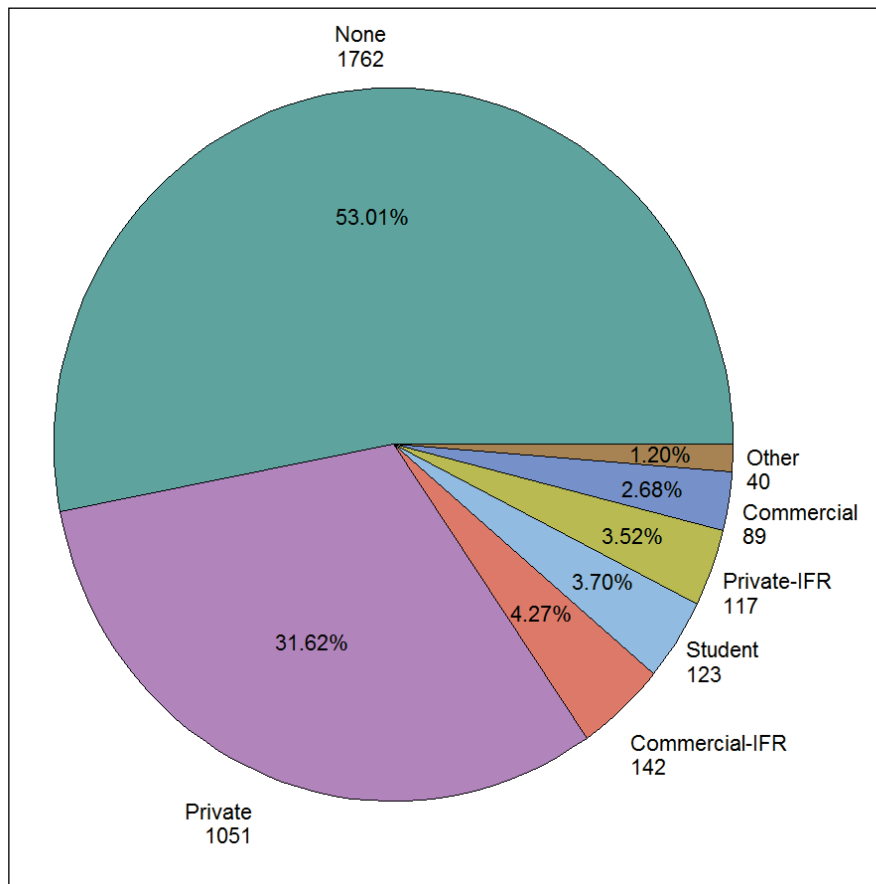


Figure 6. Pilot License Type of Active FAA Aviation Medical Examiners

Table 4. Senior Examiner Status of Active FAA Aviation Medical Examiners

Senior Examiner	Number (Percent)
Yes	2,081 (62.6)
No	1,243 (37.4)
Total	3,324

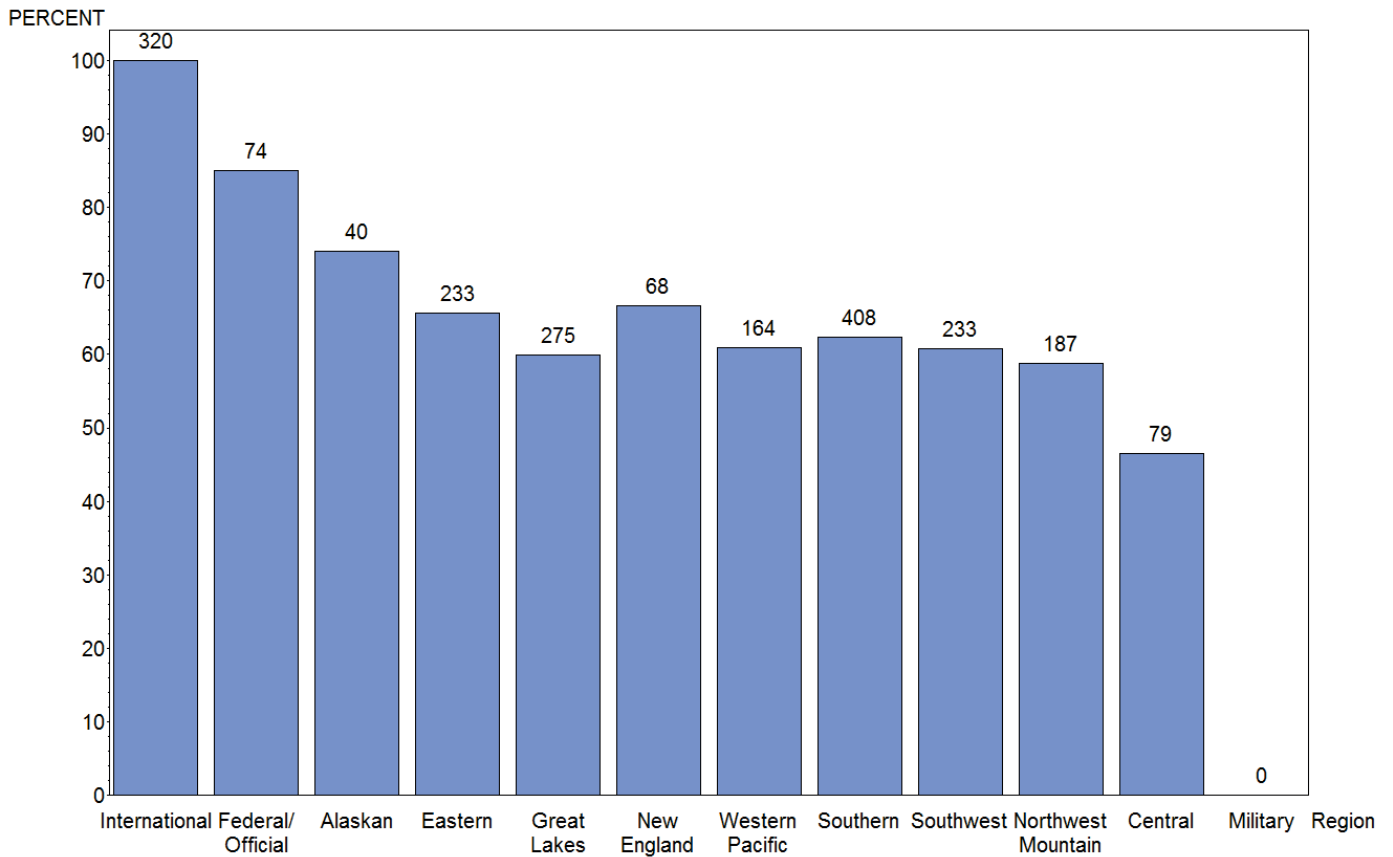


Figure 7. Senior Examiner Status of Active FAA Aviation Medical Examiners by Region

Table 5. Age by Gender of Active FAA Aviation Medical Examiners

		Number	Mean	Median	Standard Deviation	Minimum	Maximum
Overall		3,324	60.3	60.5	11.3	29.0	91.1
Gender	Female	308	52.6	53.1	9.3	30.7	79.3
	Male	2,916	61.0	61.1	11.2	29.0	91.1
	Not Reported	100	64.8	63.9	9.1	40.8	90.8

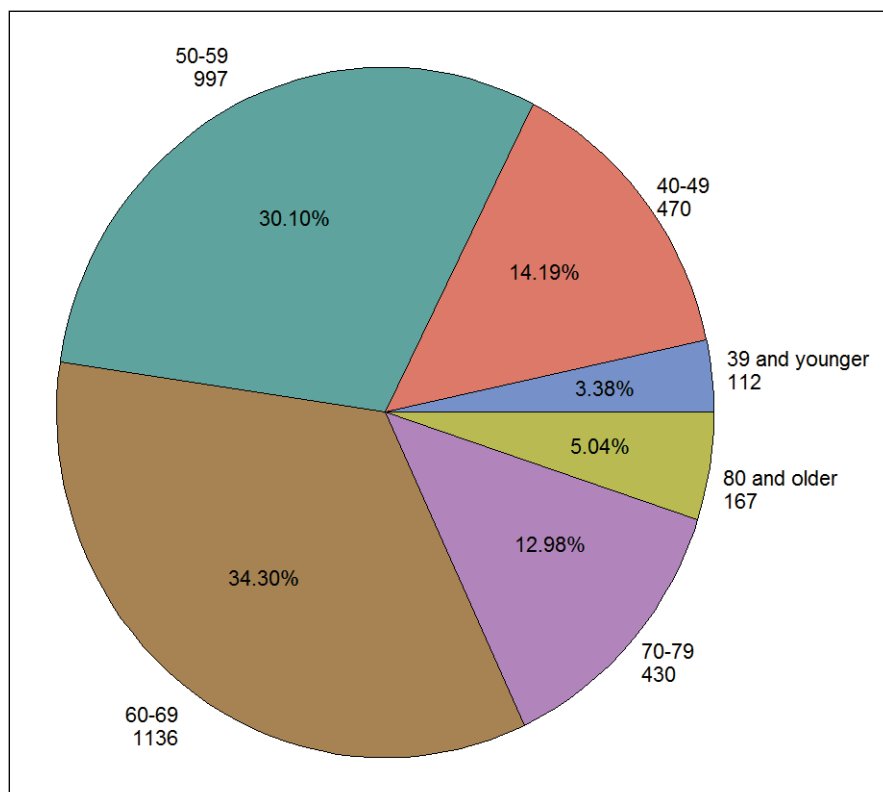


Figure 8. Age Group of Active FAA Aviation Medical Examiners

SECTION II. AIRMAN MEDICAL CERTIFICATION

The Aerospace Medical Certification Division is the central screening facility and repository within the Federal Aviation Administration for the collection, investigation, adjudication, and analysis of medical data.

Activities of the Aerospace Medical Certification Division are presented in this section. Data are presented by calendar year and represent the most recent medical examination data for all active civil aviation airmen in the United States and its territories as of December 31, 2013. Data may slightly fluctuate annually from systematic changes and corrections to the records.

Class issued represents the medical class certificate that was issued at the time of the examination. As of July 24, 2008, if the airman is under 40, first- and second-class certificates are valid for 1 year and third-class certificates are valid for 5 years. If the airman is 40 and older, first-class certificates are valid for

6 months, second-class for 1 year, and third-class for 2 years. The length of certificate validity varies for those requiring a special issuance.

Effective medical class is determined by class issued, the age of the airman, time since exam, and whether the airman had a time limited certificate. A certificate can be issued as a higher class (i.e. first-class) and become valid as a lower class certificate (i.e. third-class) as the validity period expires for each higher class.

All medical data were abstracted from the most recent medical examinations with the exception of medical conditions. Medical conditions are determined by whether the airman has ever reported the condition on any past or current medical examination. Body mass index (BMI) classifications are as follows: *Underweight* (less than 18.5), *Normal* (18.5 to 24.9), *Overweight* (25 to 29.9), and *Obese* (greater than or equal to 30).

Table 6. Number of Medical Applications Processed by Year

Year	Number of Applications	Percent Change From Previous Year
2003	444,732	N/A
2004	444,250	-0.1
2005	438,415	-1.3
2006	440,271	0.4
2007	452,592	2.8
2008	425,273	-6.0
2009	397,170	-6.6
2010	394,720	-0.6
2011	400,124	1.4
2012	396,332	-0.9
2013	394,404	-0.5

*Policy change July 24, 2008 lengthened the time of certificate validity for those under 40 years of age.

Table 7. Issued and Effective Medical Class by Region

Region *	First						Second			Third			Total Active Airmen		
	Effective Class						Effective Class			Effective Class			Effective Class		
	1st Class Certified	1	2	3	2nd Class Certified	2	3	3rd Class Certified	3	Total Airmen Certified	Percent of Total Airmen	1	2	3	
Alaskan	1,953	1,532	150	271	2,059	1,401	658	3,827	3,827	7,839	1.4	1,532	1,551	4,756	
Central	4,840	3,358	519	963	5,320	3,287	2,033	12,681	12,681	22,841	4.0	3,358	3,806	15,677	
Eastern	18,823	13,318	1,412	4,093	12,561	7,184	5,377	30,355	30,355	61,739	10.8	13,318	8,596	39,825	
Great Lakes	26,353	18,075	1,867	6,411	13,957	8,190	5,767	36,622	36,622	76,932	13.4	18,075	10,057	48,800	
New England	6,009	4,388	419	1,202	3,710	2,214	1,496	10,371	10,371	20,090	3.5	4,388	2,633	13,069	
Northwest-Mountain	19,067	13,854	1,460	3,753	13,812	7,977	5,835	25,758	25,758	58,637	10.3	13,854	9,437	35,346	
Southern	43,433	30,958	3,755	8,720	24,867	15,211	9,656	49,354	49,354	117,654	20.6	30,958	18,966	67,730	
Southwest	21,474	15,090	1,907	4,477	15,903	9,898	6,005	31,419	31,419	68,796	12.0	15,090	11,805	41,901	
Western-Pacific	24,067	16,590	2,084	5,393	18,115	10,771	7,344	39,457	39,457	81,639	14.3	16,590	12,855	52,194	
US Total	166,019	117,163	13,573	35,283	110,304	66,133	44,171	239,844	239,844	516,167	90.2	117,163	79,706	319,298	
Military	12	3	1	8	1,945	711	1,234	3,812	3,812	5,769	1.0	3	712	5,054	
International	27,239	10,909	2,003	14,327	7,973	3,302	4,671	14,899	14,899	50,111	8.8	10,909	5,305	33,897	
Total	193,270	128,075	15,577	49,618	120,222	70,146	50,076	258,555	258,555	572,047	100	128,075	85,723	358,249	
Percent of Total Certified Airmen	33.8				21.0			45.2			100.0	22.4	15.0	62.6	

* 359 airmen with unknown region

Table 8. Issued Medical Class by State of Residence and Gender

State of Residence *	Issued Medical Class						Total Airmen	
	First		Second		Third		Female	Male
	Female	Male	Female	Male	Female	Male		
Alabama	34	1,138	82	2,313	220	3,621	336	7,072
Alaska	154	1,799	145	1,914	398	3,429	697	7,142
Arizona	368	5,981	228	3,387	503	6,420	1,099	15,788
Arkansas	47	861	38	1,350	142	2,335	227	4,546
California	968	12,809	764	11,352	2,361	26,730	4,093	50,891
Colorado	484	6,062	188	2,540	549	5,793	1,221	14,395
Connecticut	74	1,503	50	792	152	2,450	276	4,745
Delaware	26	374	11	268	43	556	80	1,198
District of Columbia	11	130	10	74	39	272	60	476
Florida	1,188	19,030	572	10,053	1,701	18,476	3,461	47,559
Georgia	344	7,253	172	3,123	432	6,273	948	16,649
Hawaii	152	1,293	72	696	63	605	287	2,594
Idaho	45	767	73	1,314	163	2,134	281	4,215
Illinois	409	5,462	175	2,538	428	6,414	1,012	14,414
Indiana	180	2,911	84	1,478	247	4,039	511	8,428
Iowa	27	634	49	1,027	171	2,766	247	4,427
Kansas	61	1,190	82	1,574	268	3,293	411	6,057
Kentucky	123	2,246	37	844	160	2,126	320	5,216
Louisiana	49	1,175	56	1,594	139	2,324	244	5,093
Maine	29	455	29	519	79	1,121	137	2,095
Maryland	100	1,741	126	1,479	352	3,525	578	6,745
Massachusetts	138	1,841	74	1,196	322	3,811	534	6,848
Michigan	283	4,058	119	2,055	410	5,824	812	11,937
Minnesota	280	4,205	139	1,952	304	4,871	723	11,028
Mississippi	46	926	36	969	129	1,881	211	3,776
Missouri	124	2,188	78	1,779	279	3,951	481	7,918
Montana	47	619	61	1,001	146	1,738	254	3,358
Nebraska	31	585	16	715	113	1,840	160	3,140
Nevada	134	2,179	89	1,392	227	2,318	450	5,889
New Hampshire	69	1,308	53	637	94	1,304	216	3,249
New Jersey	163	2,607	104	1,413	254	3,682	521	7,702
New Mexico	27	517	76	940	143	1,647	246	3,104
New York	283	4,259	171	2,580	572	7,066	1,026	13,905
North Carolina	231	4,038	120	2,372	398	5,869	749	12,279
North Dakota	57	1,371	36	782	64	1,128	157	3,281
Ohio	228	4,416	158	2,337	460	6,553	846	13,306
Oklahoma	71	1,435	110	1,749	300	3,907	481	7,091
Oregon	115	1,461	170	2,265	323	3,718	608	7,444
Pennsylvania	236	4,440	214	2,744	435	6,328	885	13,512
Rhode Island	24	277	10	139	29	430	63	846
South Carolina	78	1,744	62	1,227	185	2,864	325	5,835
South Dakota	24	316	24	570	58	981	106	1,867
Tennessee	189	4,022	150	2,319	284	4,113	623	10,454
Texas	728	16,564	589	9,401	1,504	18,978	2,821	44,943
Utah	146	2,907	150	2,044	130	2,185	426	7,136
Vermont	21	270	13	198	38	541	72	1,009
Virginia	248	3,854	167	2,677	520	5,634	935	12,165
Washington	438	5,706	237	3,351	598	7,203	1,273	16,260
West Virginia	17	277	21	392	66	886	104	1,555
Wisconsin	114	2,039	89	1,421	355	4,486	558	7,946
Wyoming	15	255	25	393	82	996	122	1,644
US Territories	53	944	38	610	55	900	146	2,454
Military	0	12	75	1,870	367	3,445	442	5,327
International	1,569	25,670	374	7,599	1,040	13,859	2,983	47,128
Total	11,100	182,124	6,891	113,318	18,894	239,639	36,885	535,081

*440 airmen missing state

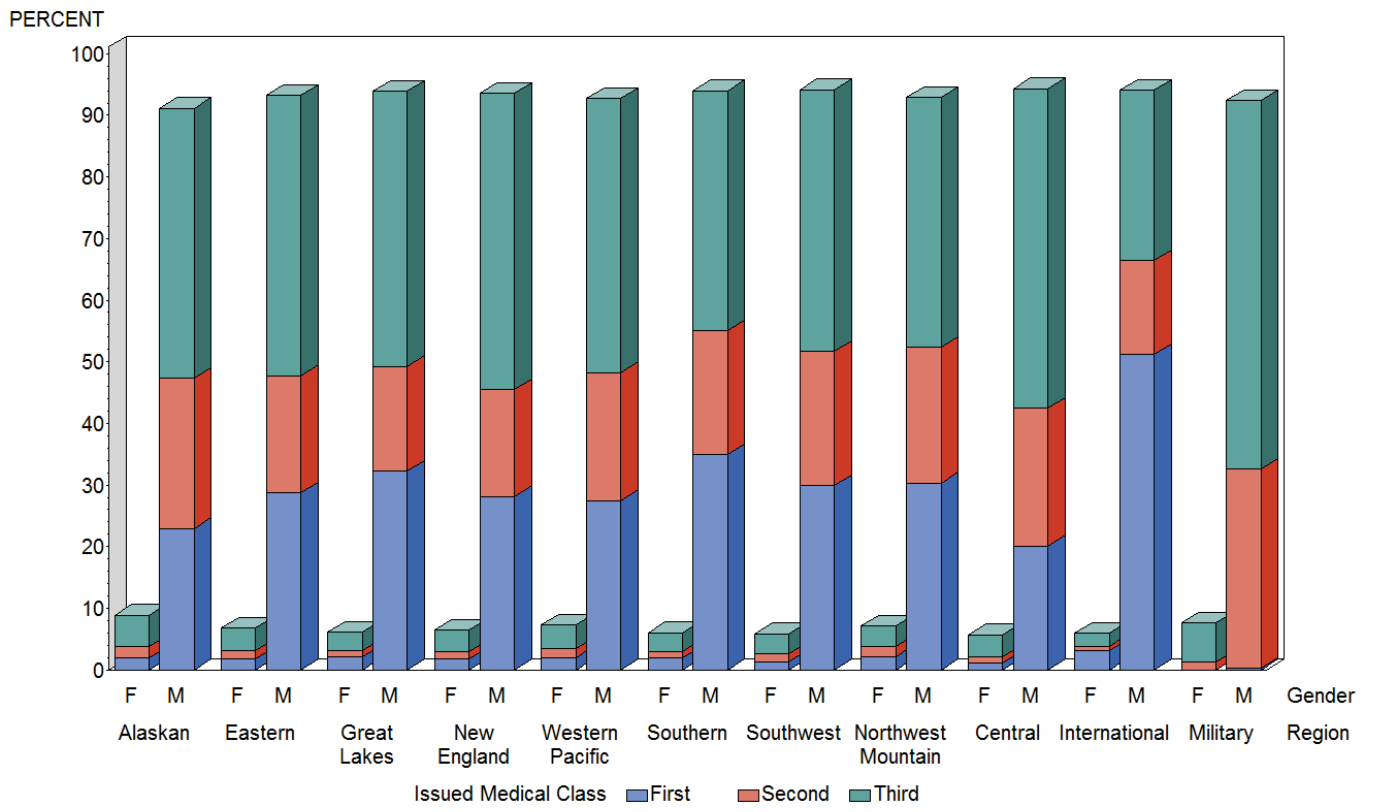


Figure 9. Issued Medical Class by Region and Gender

Table 9. Age as of 12/31/2013 of all Active Airmen by Effective Medical Class

Effective Medical Class	Number of airmen	Mean	Median	Standard Deviation
First	128,092	43.9	45.2	12.4
Second	85,746	49.5	50.3	13.7
Third	358,568	43.3	41.0	16.8
All Classes	572,406	44.4	44.1	15.6

Table 10. Age Groups of all Active Airmen by Effective Medical Class

Age Group (as of 12/31/2013)	Effective Medical Class Number (Percent)		
	First	Second	Third
16-19	3,067 (2.39)	1,356 (1.58)	10,493 (2.93)
20-24	6,781 (5.29)	3,427 (4.00)	46,323 (12.92)
25-29	11,010 (8.60)	4,629 (5.40)	49,322 (13.76)
30-34	14,161 (11.06)	4,892 (5.71)	37,162 (10.36)
35-39	14,137 (11.04)	4,932 (5.75)	30,271 (8.44)
40-44	14,341 (11.20)	10,244 (11.95)	29,344 (8.18)
45-49	17,305 (13.51)	12,614 (14.71)	23,062 (6.43)
50-54	19,469 (15.20)	12,583 (14.67)	28,737 (8.01)
55-59	16,535 (12.91)	10,889 (12.70)	30,990 (8.64)
60-64	8,914 (6.96)	8,291 (9.67)	27,115 (7.56)
65+	2,372 (1.85)	11,889 (13.87)	45,749 (12.76)
Total	128,092 (22.38)	85,746 (14.98)	358,568 (62.64)

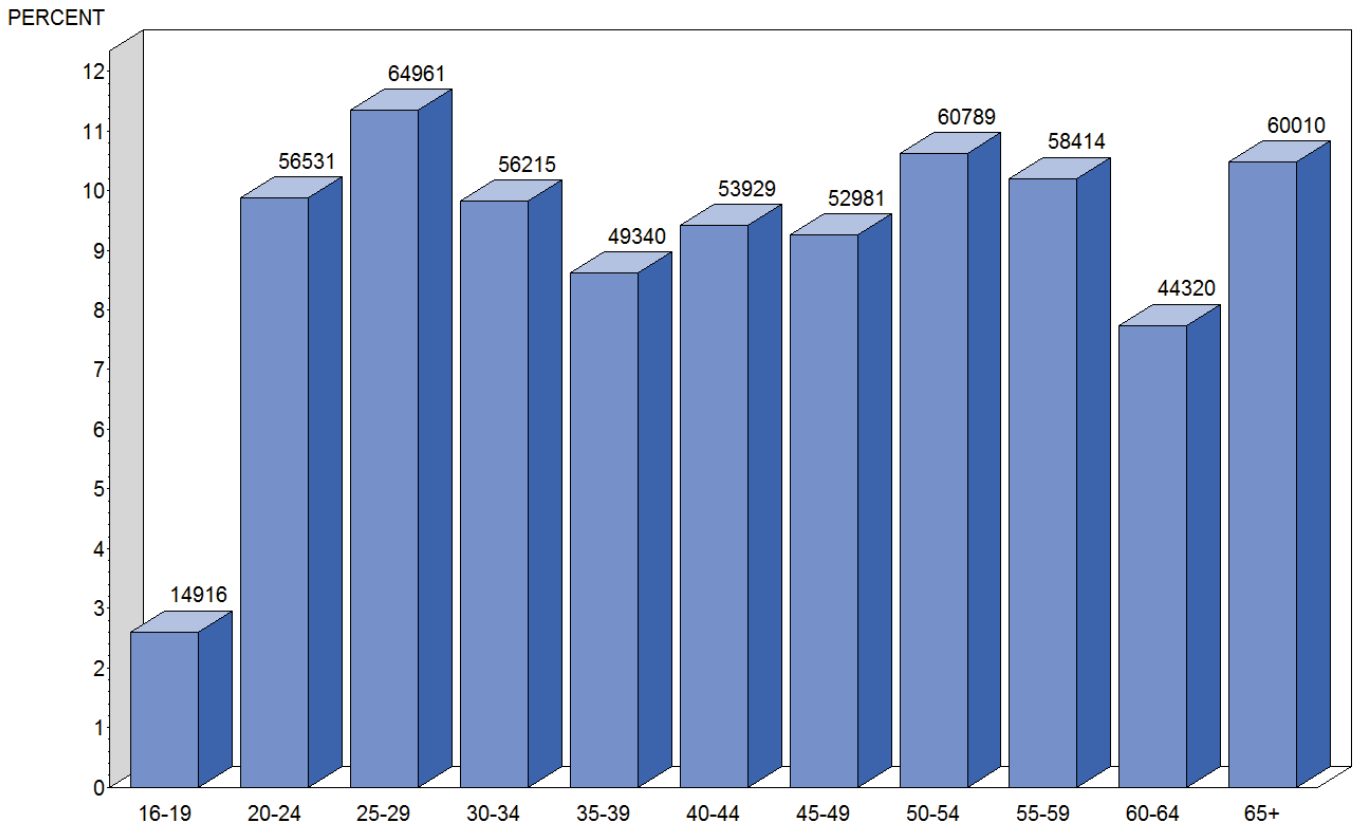


Figure 10. Age Groups as of 12/31/2013 of all Active Airmen

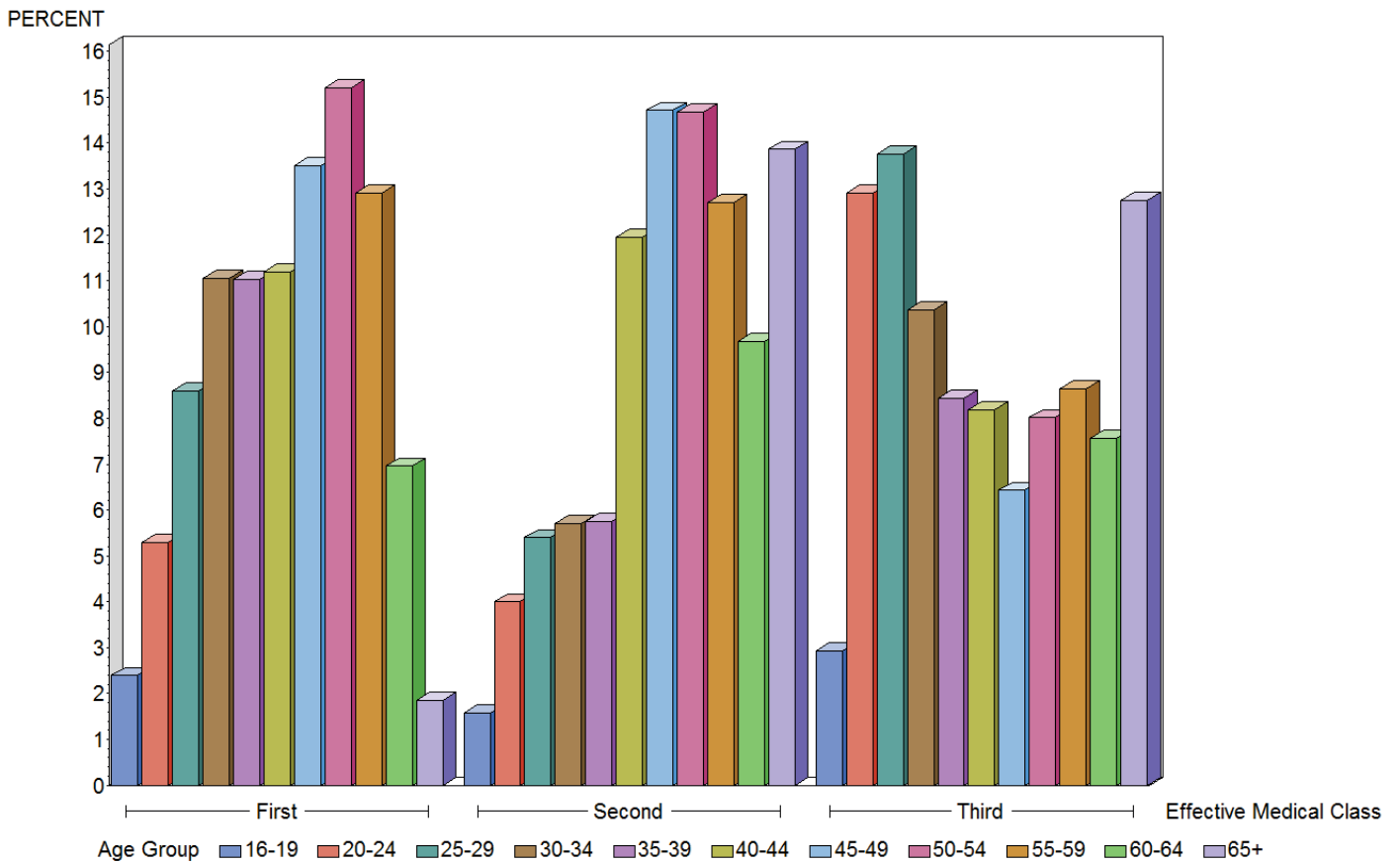


Figure 11. Age Groups as of 12/31/2013 by Effective Medical Class for all Active Airmen

Table 11. Age at Exam Summary Statistics for Active Airmen by Issued Medical Class

Issued Medical Class	Number of Airmen	Mean	Median	Standard Deviation
First	193,392	40.4	40.8	13.8
Second	120,280	43.6	43.7	16.0
Third	258,734	44.7	45.8	17.6
All Classes	572,406	43.0	43.3	16.2

Table 12. Age Groups for all Active Airmen by Issued Medical Class

Age Group (at time of exam)	Issued Medical Class Number (Percent)		
	First	Second	Third
16-19	13,058 (6.75)	6,902 (5.74)	17,898 (6.92)
20-24	20,495 (10.60)	12,335 (10.26)	30,990 (11.98)
25-29	21,411 (11.07)	12,498 (10.39)	23,525 (9.09)
30-34	21,302 (11.01)	10,609 (8.82)	19,342 (7.48)
35-39	18,286 (9.46)	11,257 (9.36)	21,354 (8.25)
40-44	18,923 (9.78)	9,285 (7.72)	13,710 (5.30)
45-49	22,635 (11.70)	11,522 (9.58)	20,129 (7.78)
50-54	23,443 (12.12)	12,380 (10.29)	25,515 (9.86)
55-59	19,145 (9.90)	11,360 (9.44)	26,967 (10.42)
60-64	11,129 (5.75)	9,215 (7.66)	22,732 (8.79)
65+	3,565 (1.84)	12,917 (10.74)	36,572 (14.13)
Total	193,392 (33.79)	120,280 (21.01)	258,734 (45.20)

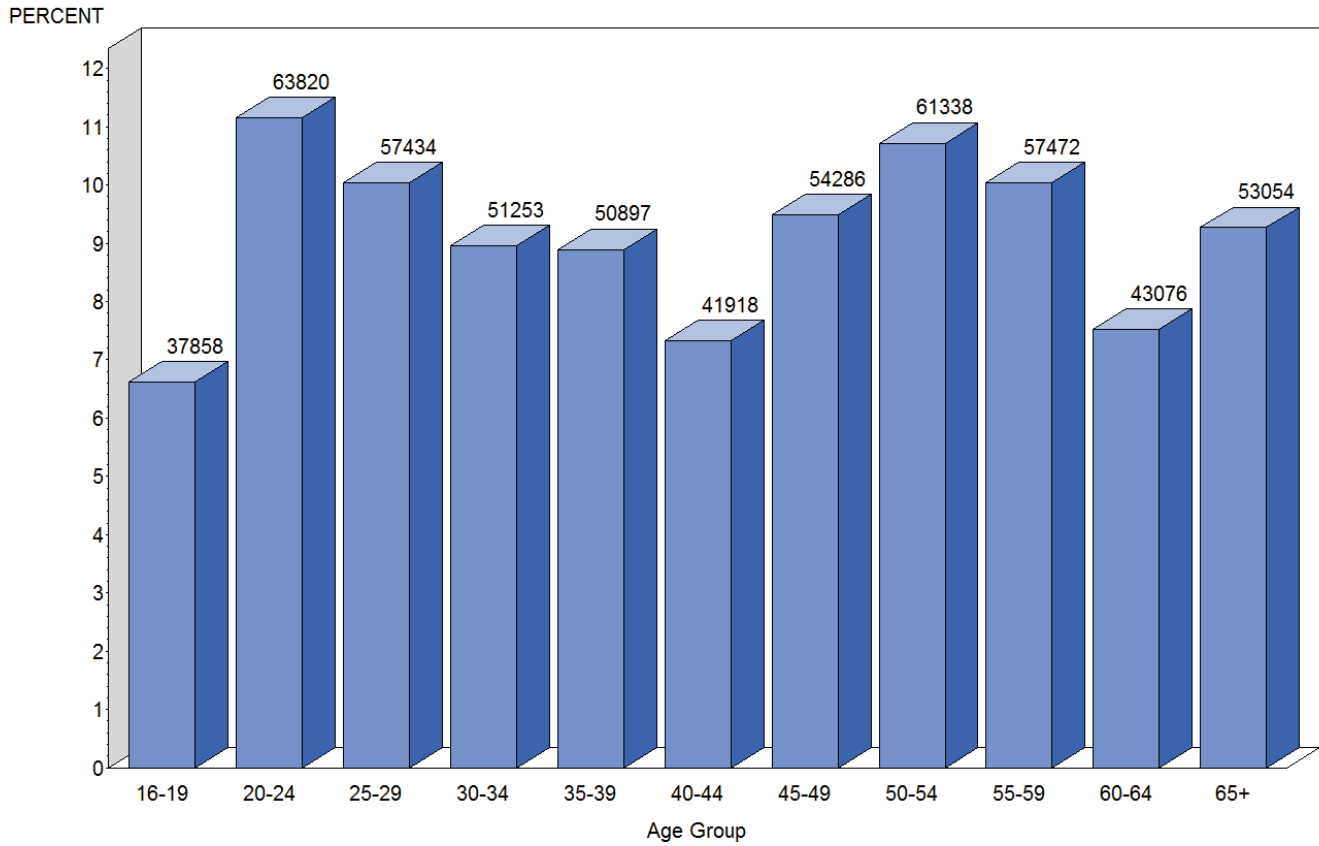


Figure 12. Age Group of all Active Airmen at Time of Exam

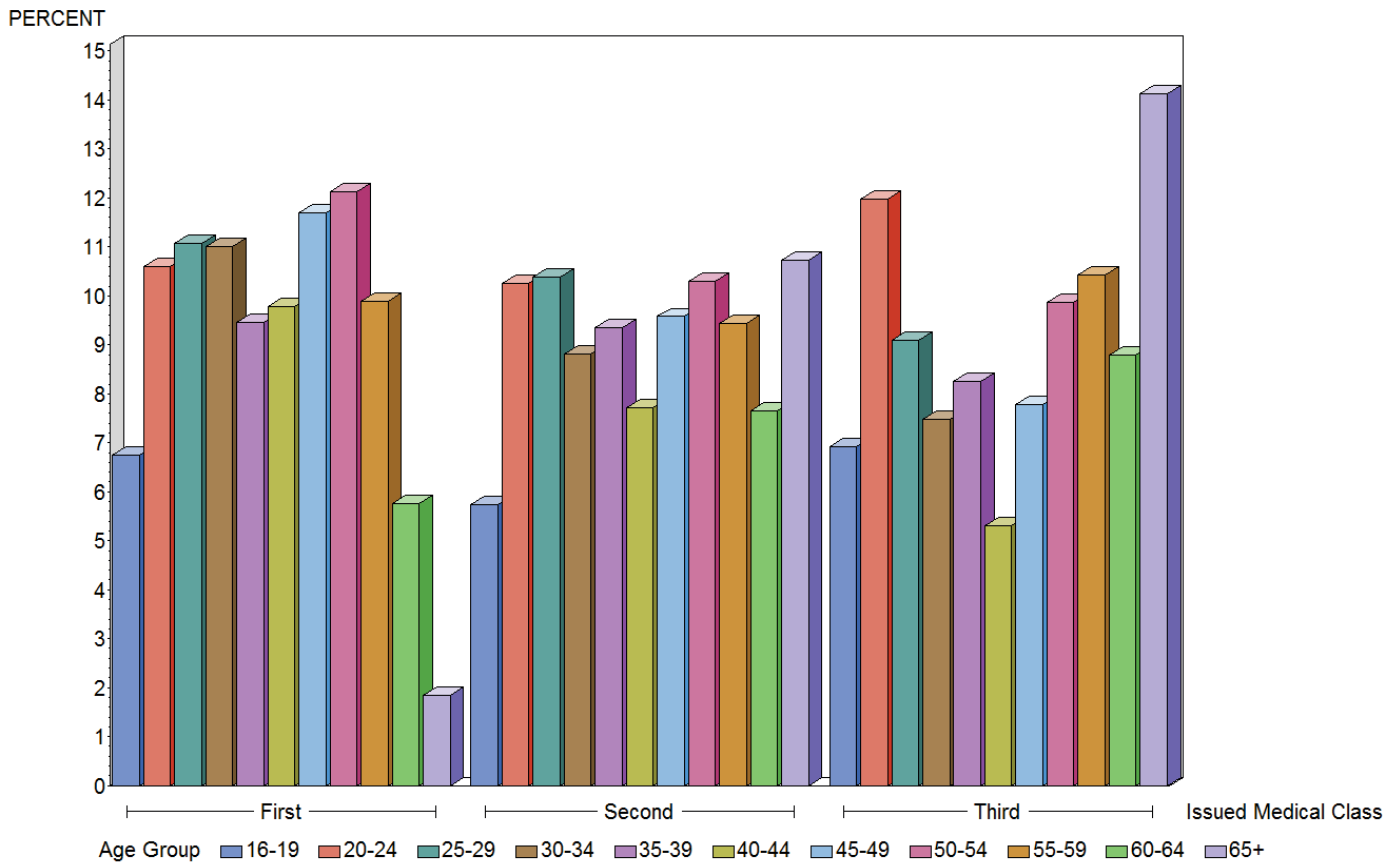


Figure 13. Age Groups by Issued Medical Class for all Active Airmen at Time of Exam

Table 13. Age at Time of Exam by Issued Medical Class and Gender

Age Group	Issued Medical Class						Total Airmen	
	First		Second		Third		Female	Male
	Female	Male	Female	Male	Female	Male		
16-19	1,527	11,531	910	5,992	2,633	15,265	5,070	32,788
20-24	1,820	18,675	1,072	11,263	3,344	27,646	6,236	57,584
25-29	1,608	19,803	1,051	11,447	2,254	21,271	4,913	52,521
30-34	1,528	19,774	803	9,806	1,708	17,634	4,039	47,214
35-39	1,132	17,154	754	10,503	1,634	19,720	3,520	47,377
40-44	956	17,967	460	8,825	884	12,826	2,300	39,618
45-49	994	21,641	491	11,031	1,180	18,949	2,665	51,621
50-54	868	22,575	503	11,877	1,511	24,004	2,882	58,456
55-59	510	18,635	379	10,981	1,468	25,499	2,357	55,115
60-64	152	10,977	258	8,957	1,037	21,695	1,447	41,629
65+	19	3,546	218	12,699	1,264	35,308	1,501	51,553
Total	11,114	182,278	6,899	113,381	18,917	239,817	36,930	535,476

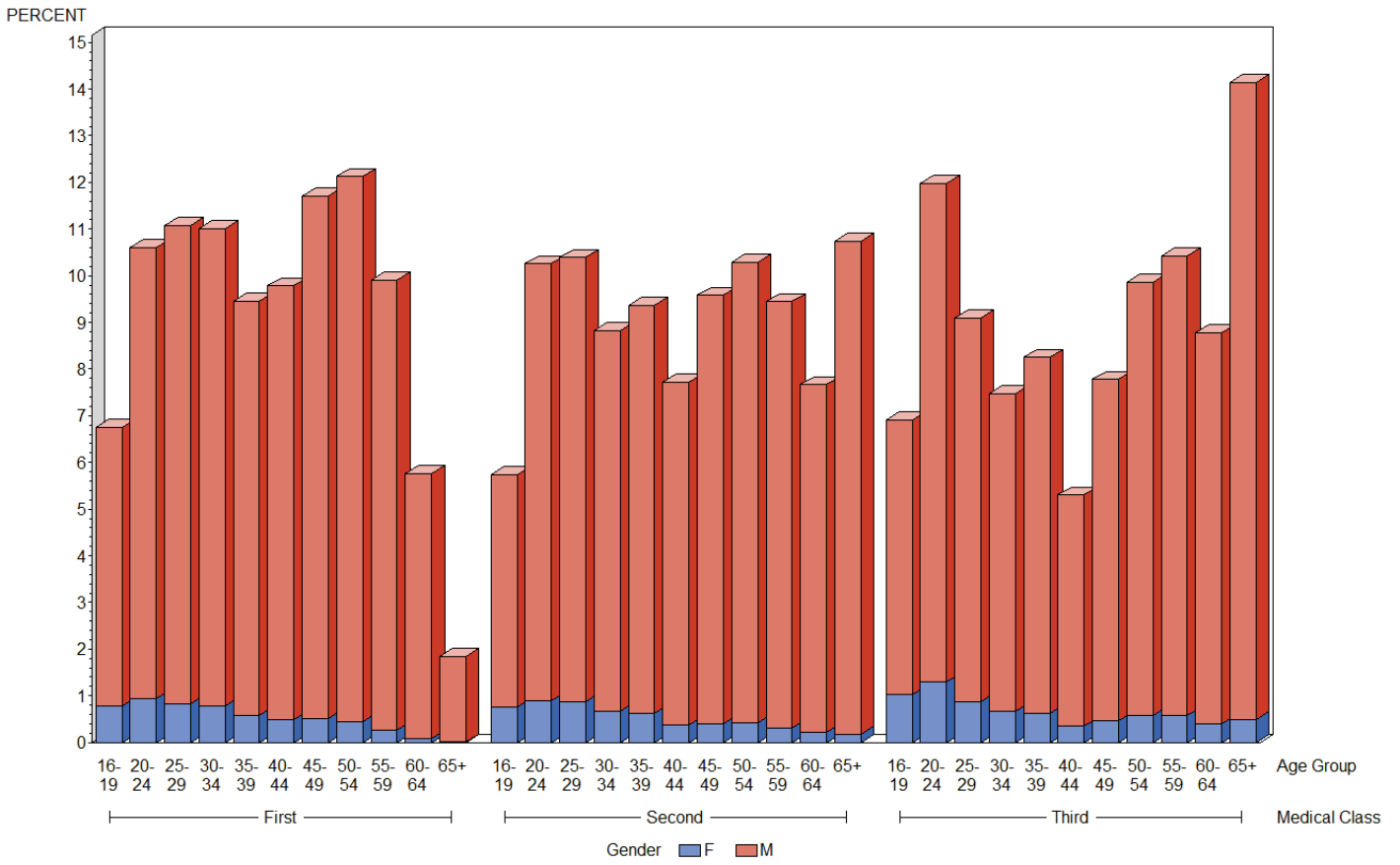


Figure 14. Age Group at Time of Exam by Gender and Issued Medical Class

Table 14. Height (inches) of all Active Airmen by Gender and Issued Medical Class

Issued Medical Class*		Number of Airmen	Mean	Median	Standard Deviation
First	Females	11,114	65.5	65.0	2.7
	Males	182,272	70.6	71.0	2.7
Second	Females	6,899	65.4	65.0	2.9
	Males	113,379	70.5	70.0	2.7
Third	Females	18,915	65.4	65.0	2.9
	Males	239,798	70.5	70.0	2.8
All Classes	Females	36,928	65.4	65.0	2.9
	Males	535,449	70.5	71.0	2.7

*29 airmen missing height

Table 15. Height (inches) by Issued Medical Class and Gender

Height*	Issued Medical Class						Total Airmen	
	First		Second		Third		Female	Male
	Female	Male	Female	Male	Female	Male		
<59	61	161	51	133	135	295	247	589
59	46	47	38	73	99	141	183	261
60	175	114	126	130	383	257	684	501
61	352	96	219	100	682	241	1,253	437
62	757	180	547	142	1,484	392	2,788	714
63	1,069	387	704	282	1,971	761	3,744	1,430
64	1,556	1,251	1,018	790	2,618	1,912	5,192	3,953
65	1,596	2,685	952	1,787	2,605	3,997	5,153	8,469
66	1,697	6,381	1,023	4,186	2,647	8,826	5,367	19,393
67	1,421	11,181	798	6,866	2,153	14,976	4,372	33,023
68	989	17,627	568	10,855	1,587	23,106	3,144	51,588
69	614	22,142	351	14,079	1,010	28,761	1,975	64,982
70	405	27,500	223	17,296	662	36,610	1,290	81,406
71	191	24,495	118	15,659	359	32,987	668	73,141
72	110	27,205	91	16,867	254	34,737	455	78,809
73	36	16,161	31	9,561	97	20,441	164	46,163
74	18	12,351	21	7,363	84	15,458	123	35,172
75	8	6,446	10	3,684	43	8,122	61	18,252
76	9	3,759	5	2,180	26	4,791	40	10,730
77	1	1,298	2	788	6	1,705	9	3,791
78+	3	805	3	558	10	1,282	16	2,645
Total	11,114	182,272	6,899	113,379	18,915	239,798	36,928	535,449

*29 airmen missing height

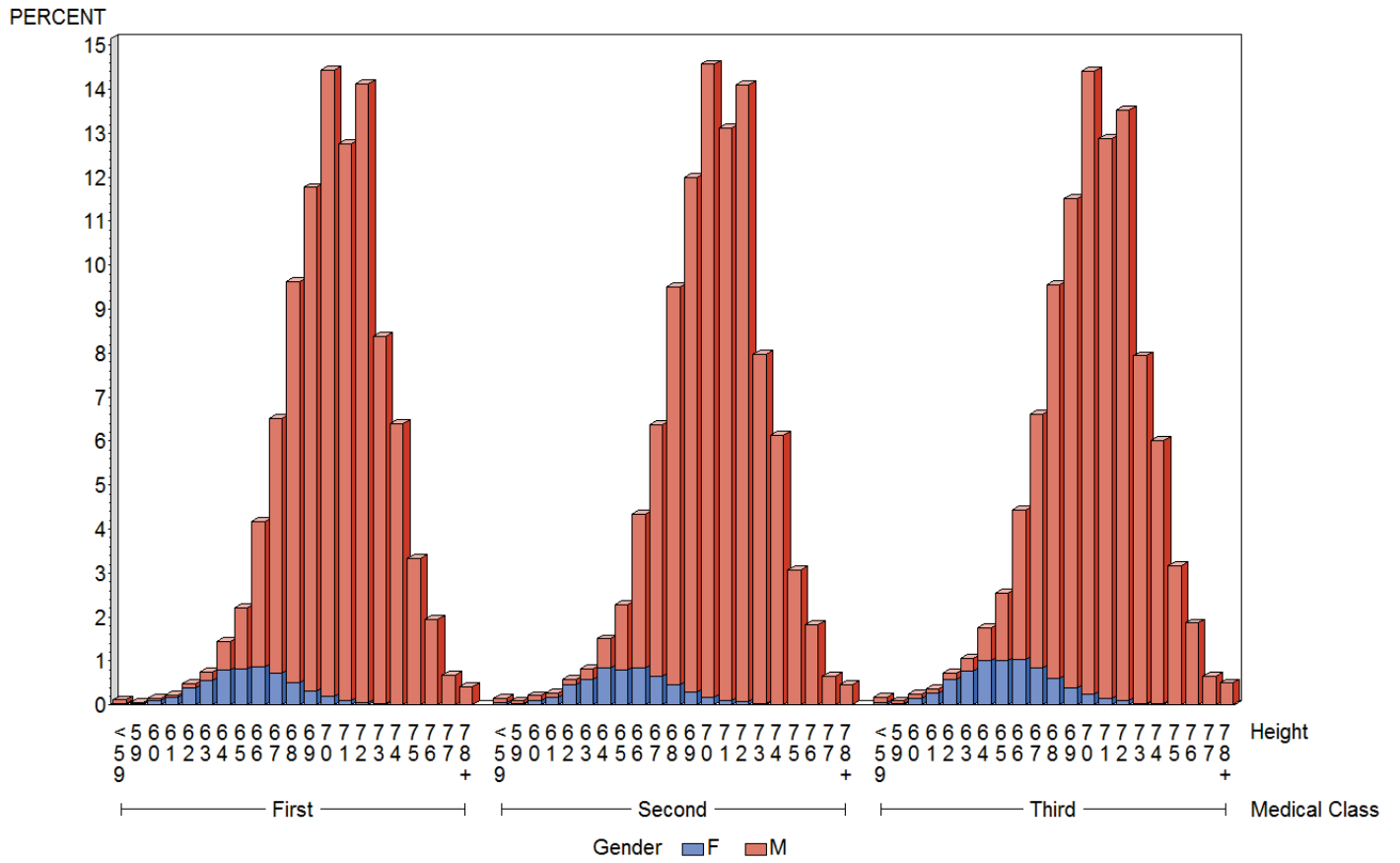


Figure 15. Height (inches) by Gender and Issued Medical Class

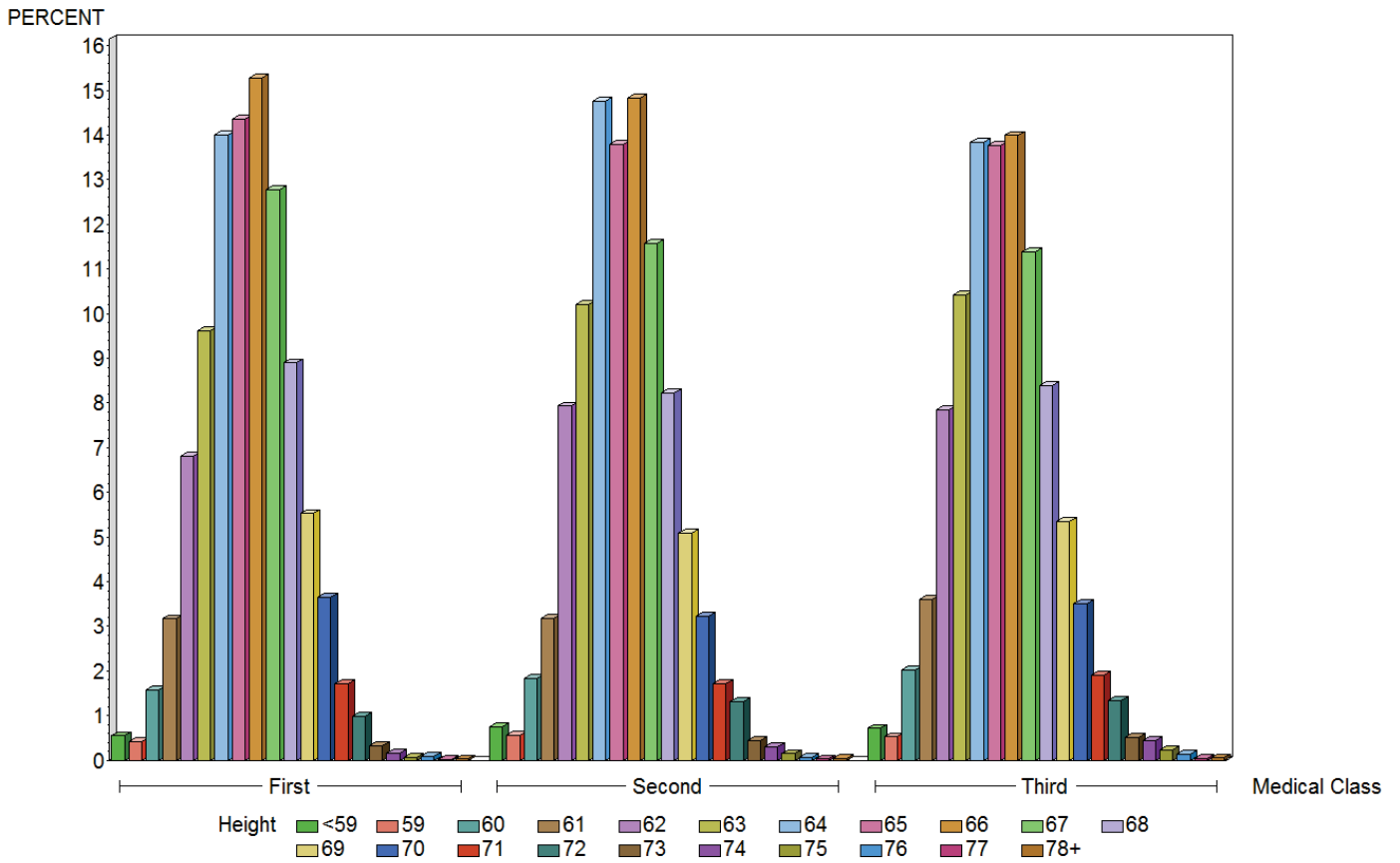


Figure 16. Height (inches) by Issued Medical Class – Females only

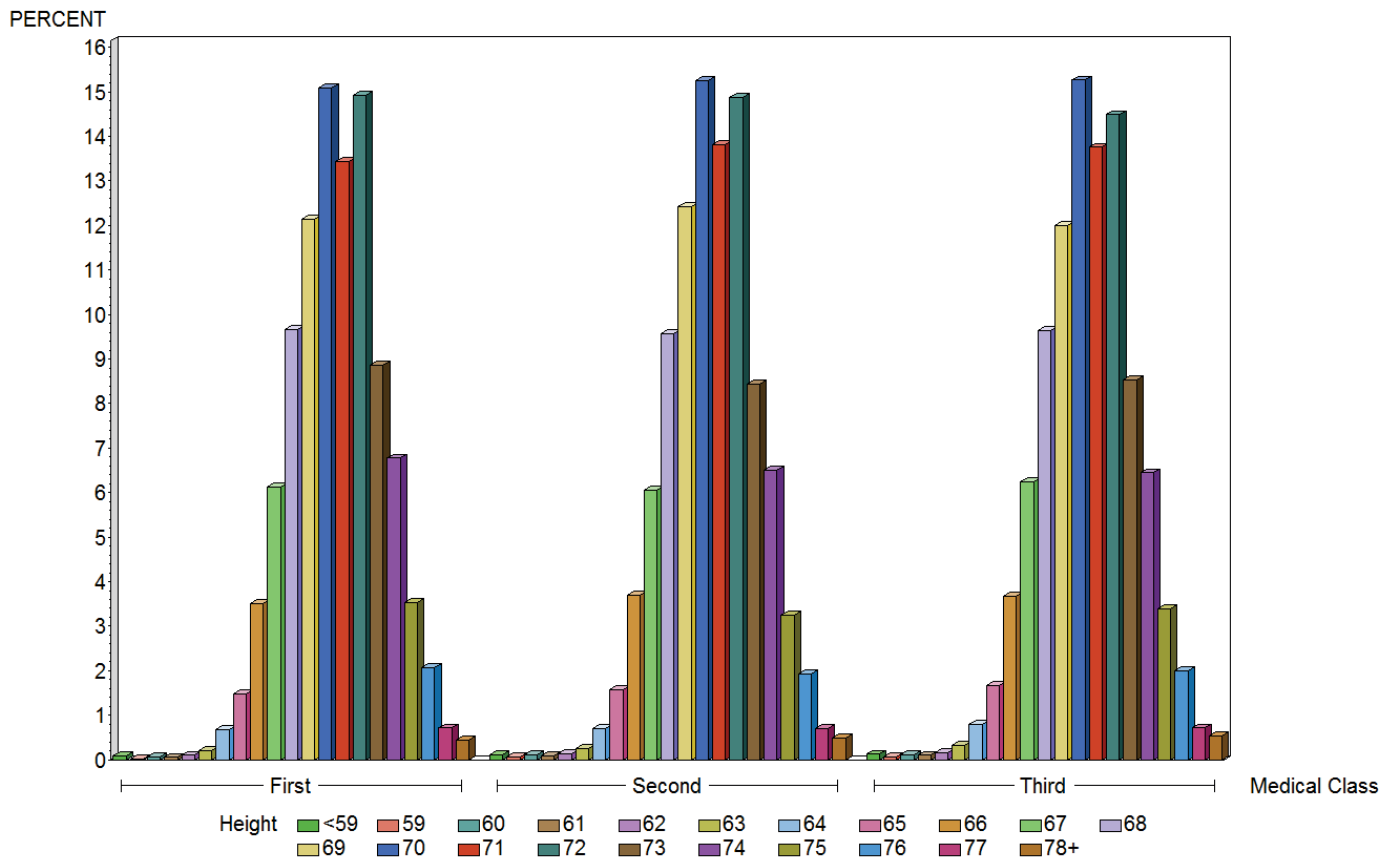


Figure 17. Height (inches) by Issued Medical Class – Males only

Table 16. Weight (pounds) of all Active Airmen by Gender and Issued Medical Class

Issued Medical Class*		Number of Airmen	Mean	Median	Standard Deviation
First	Females	11,111	144.6	139.0	28.4
	Males	182,260	190.2	187.0	33.0
Second	Females	6,899	149.6	143.0	32.2
	Males	113,371	194.6	191.0	34.3
Third	Females	18,915	147.4	141.0	30.3
	Males	239,798	193.6	190.0	34.6
All Classes	Females	36,925	147.0	140.0	30.2
	Males	535,429	192.6	190.0	34.0

*52 missing weight

Table 17. Weight (pounds) by Issued Medical Class and Gender

Weight*	Issued Medical Class						Total Airmen	
	First		Second		Third		Female	Male
	Female	Male	Female	Male	Female	Male		
<100	115	53	41	38	143	68	299	159
100-109	407	163	222	66	676	173	1,305	402
110-119	1,140	613	653	272	1,789	669	3,582	1,554
120-129	1,812	1,867	992	955	2,876	2,173	5,680	4,995
130-139	2,091	4,340	1,147	2,308	3,267	4,971	6,505	11,619
140-149	1,686	8,135	1,004	4,242	2,867	9,668	5,557	22,045
150-159	1,180	13,738	779	7,072	2,145	16,311	4,104	37,121
160-169	865	18,784	581	10,435	1,521	23,368	2,967	52,587
170-179	579	23,316	400	13,314	1,101	28,728	2,080	65,358
180-189	432	25,098	309	14,895	800	31,724	1,541	71,717
190-199	272	22,287	228	13,961	532	28,786	1,032	65,034
200-209	164	18,171	148	12,037	343	24,523	655	54,731
210-219	106	14,146	124	9,676	252	19,276	482	43,098
220-229	96	10,393	88	7,547	199	15,065	383	33,005
230-239	52	7,115	56	5,323	140	10,965	248	23,403
240-249	35	4,816	33	3,662	79	7,470	147	15,948
250-259	29	3,240	37	2,586	61	5,301	127	11,127
260-269	17	2,080	15	1,640	45	3,502	77	7,222
270-279	10	1,384	14	1,089	33	2,404	57	4,877
280+	23	2,521	28	2,253	46	4,653	97	9,427
Total	11,111	182,260	6,899	113,371	18,915	239,798	36,925	535,429

*52 airmen missing weight

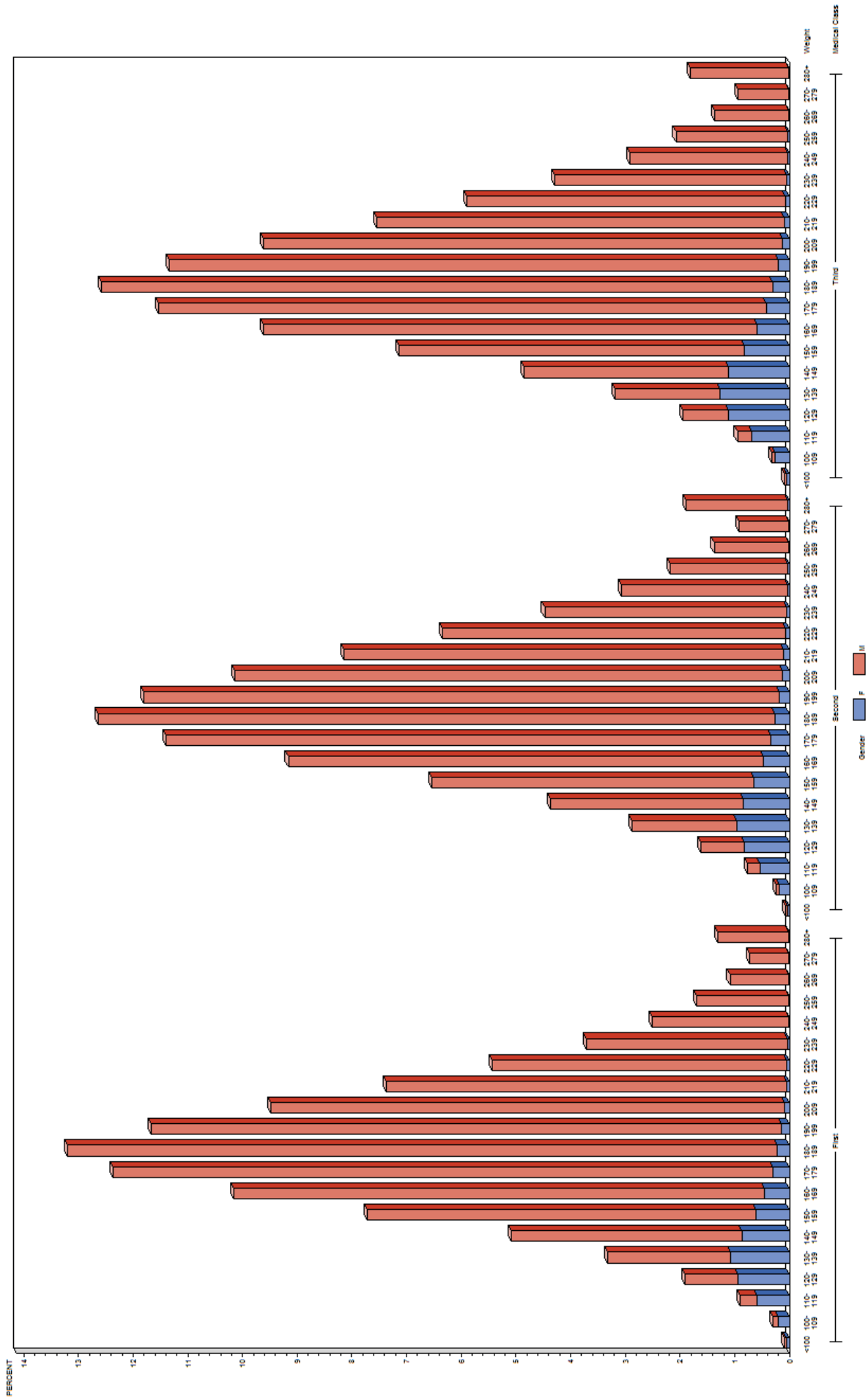


Figure 18. Weight (pounds) by Gender and Issued Medical Class

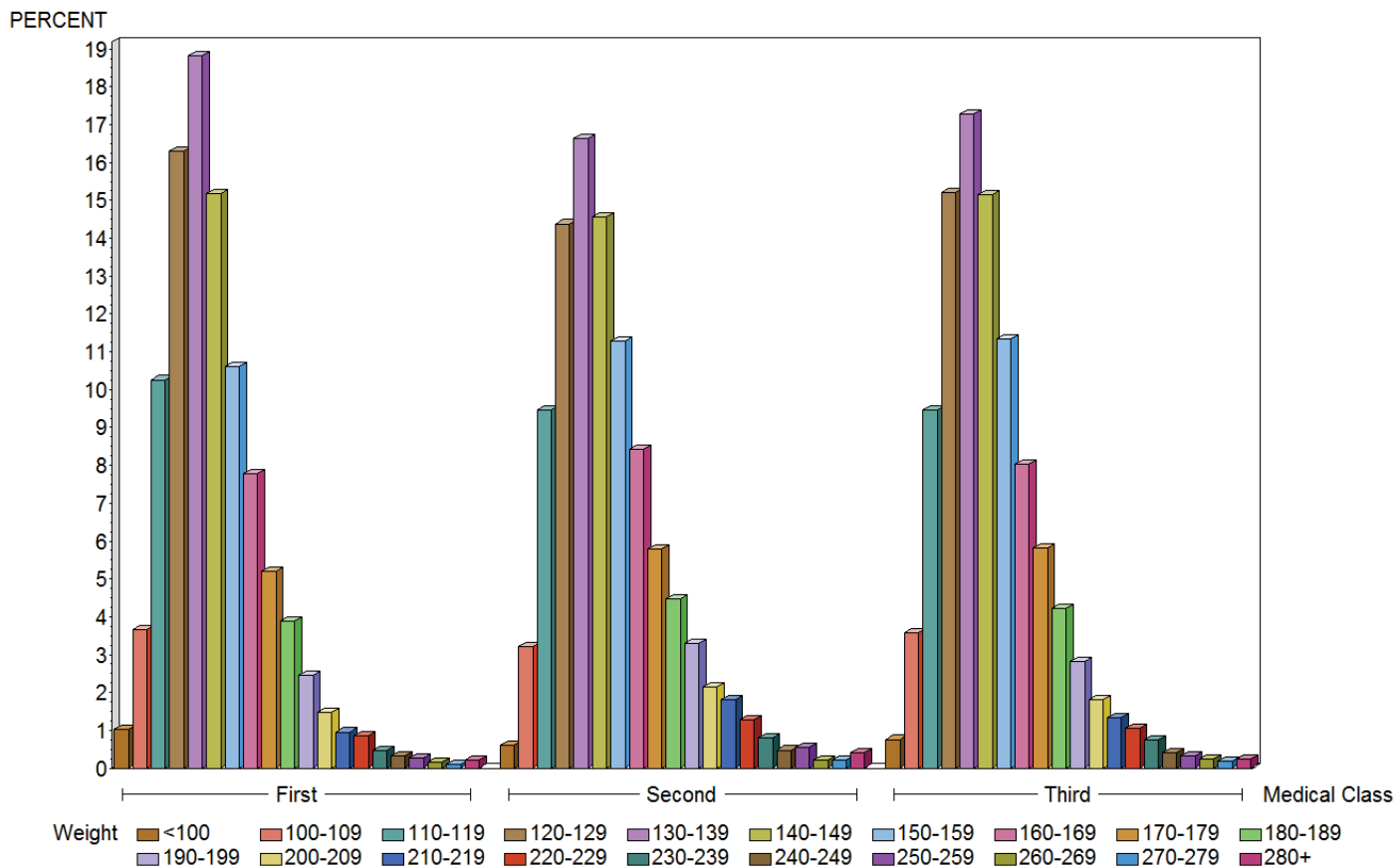


Figure 19. Weight (pounds) by Issued Medical Class – Females only

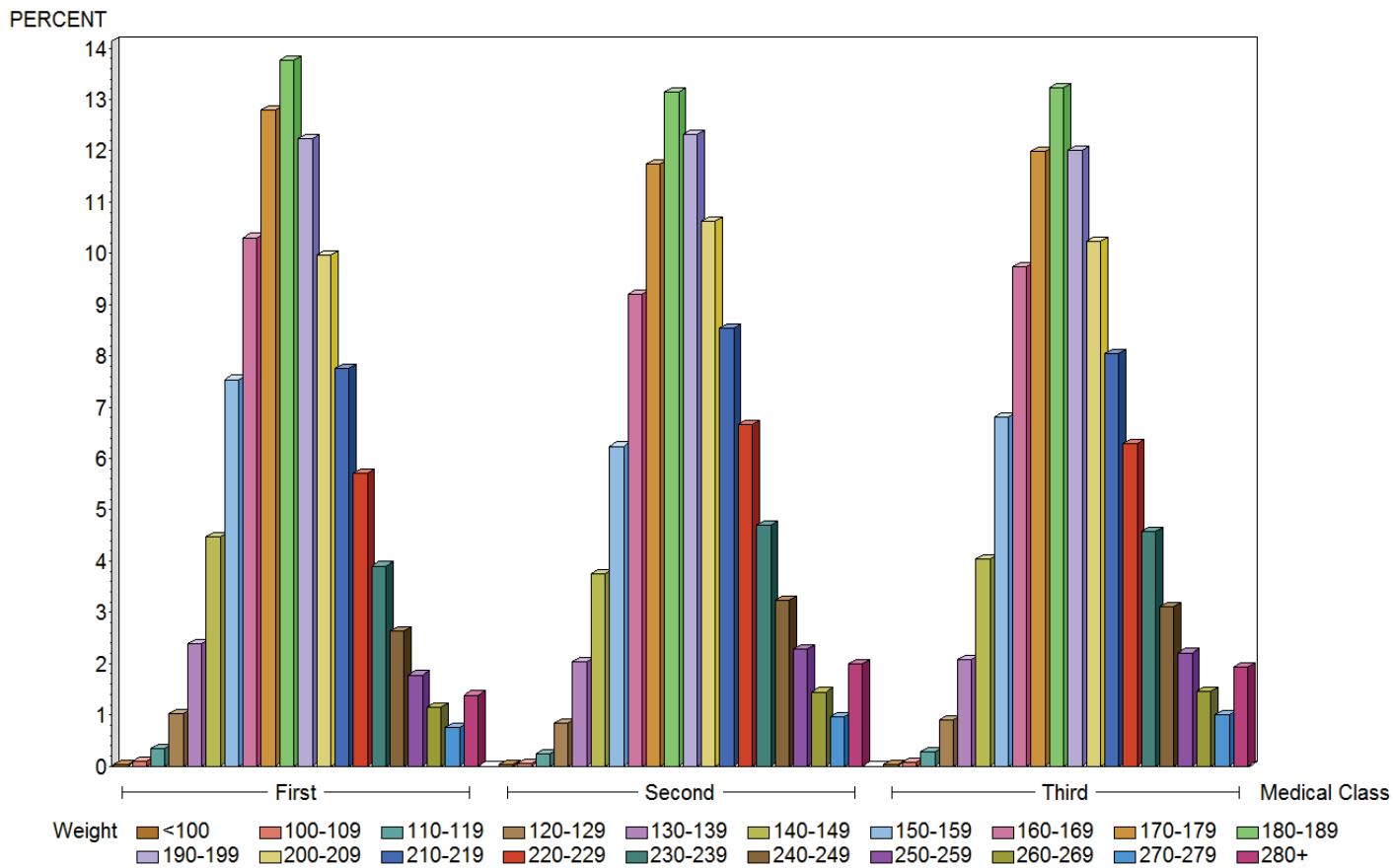


Figure 20. Weight (pounds) by Issued Medical Class – Males only

Table 18. BMI of all Active Airmen by Gender and Issued Medical Class

Issued Medical Class*		Number of Airmen	Mean	Median	Standard Deviation
First	Females	11,111	23.7	22.7	4.3
	Males	182,255	26.8	26.4	4.2
Second	Females	6,899	24.6	23.5	4.9
	Males	113,369	27.5	27.1	4.5
Third	Females	18,913	24.2	23.2	4.5
	Males	239,780	27.4	26.9	4.5
All Classes	Females	36,923	24.1	23.1	4.5
	Males	535,404	27.2	26.7	4.4

*79 airmen missing BMI

Table 19. BMI Category by Issued Medical Class and Gender

BMI*	Issued Medical Class						Total Airmen	
	First		Second		Third		Total Airmen	
	Female	Male	Female	Male	Female	Male	Female	Male
Underweight	501	1,680	252	816	695	1,802	1,448	4,298
Normal	7,390	61,160	4,127	32,188	11,895	72,339	23,412	165,687
Overweight	2,297	84,528	1,645	52,358	4,375	108,675	8,317	245,561
Obese	923	34,887	875	28,007	1,948	56,964	3,746	119,858
Total	11,111	182,255	6,899	113,369	18,913	239,780	36,923	535,404

*79 airmen missing BMI and/or gender

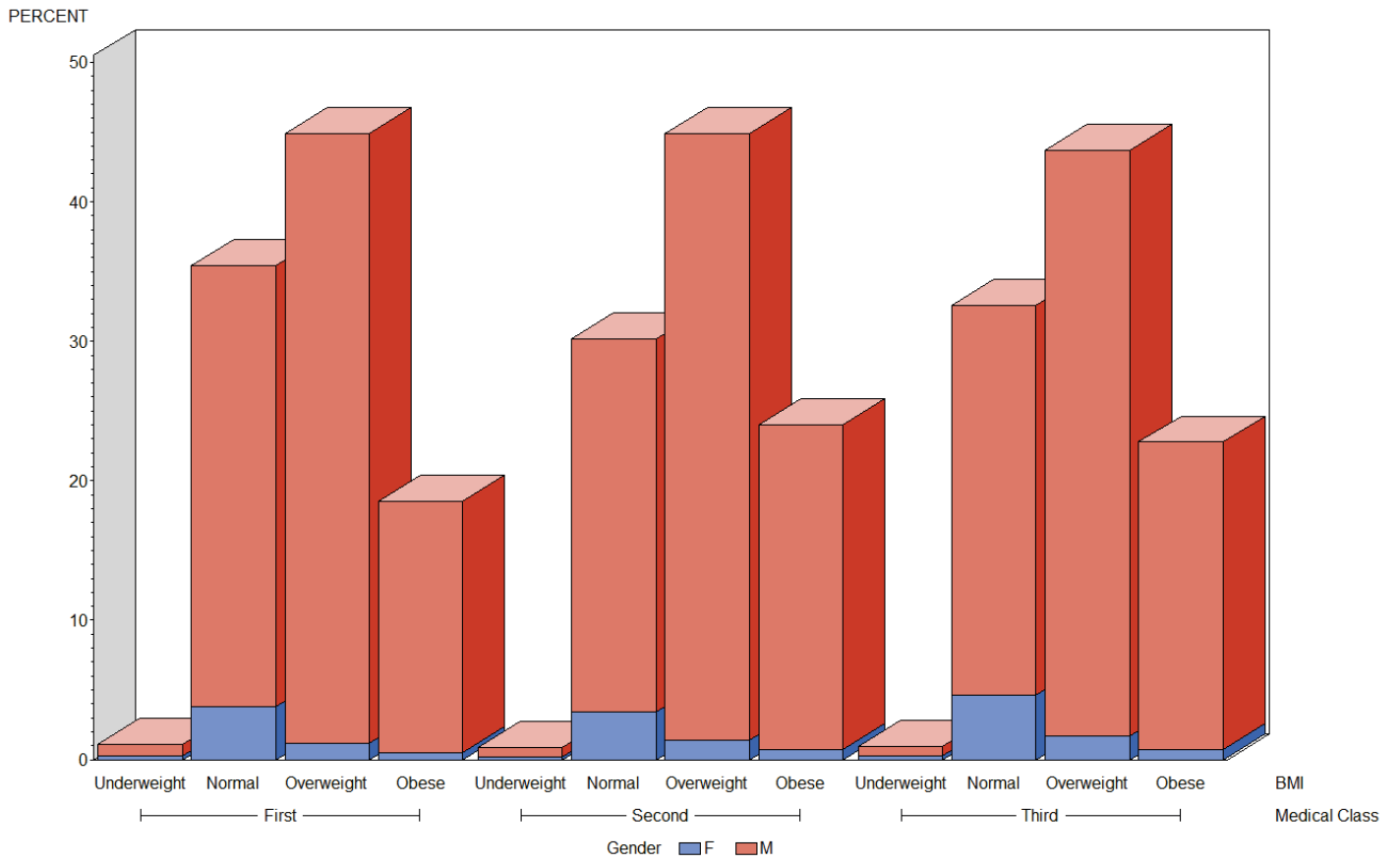


Figure 21. BMI by Gender and Issued Medical Class

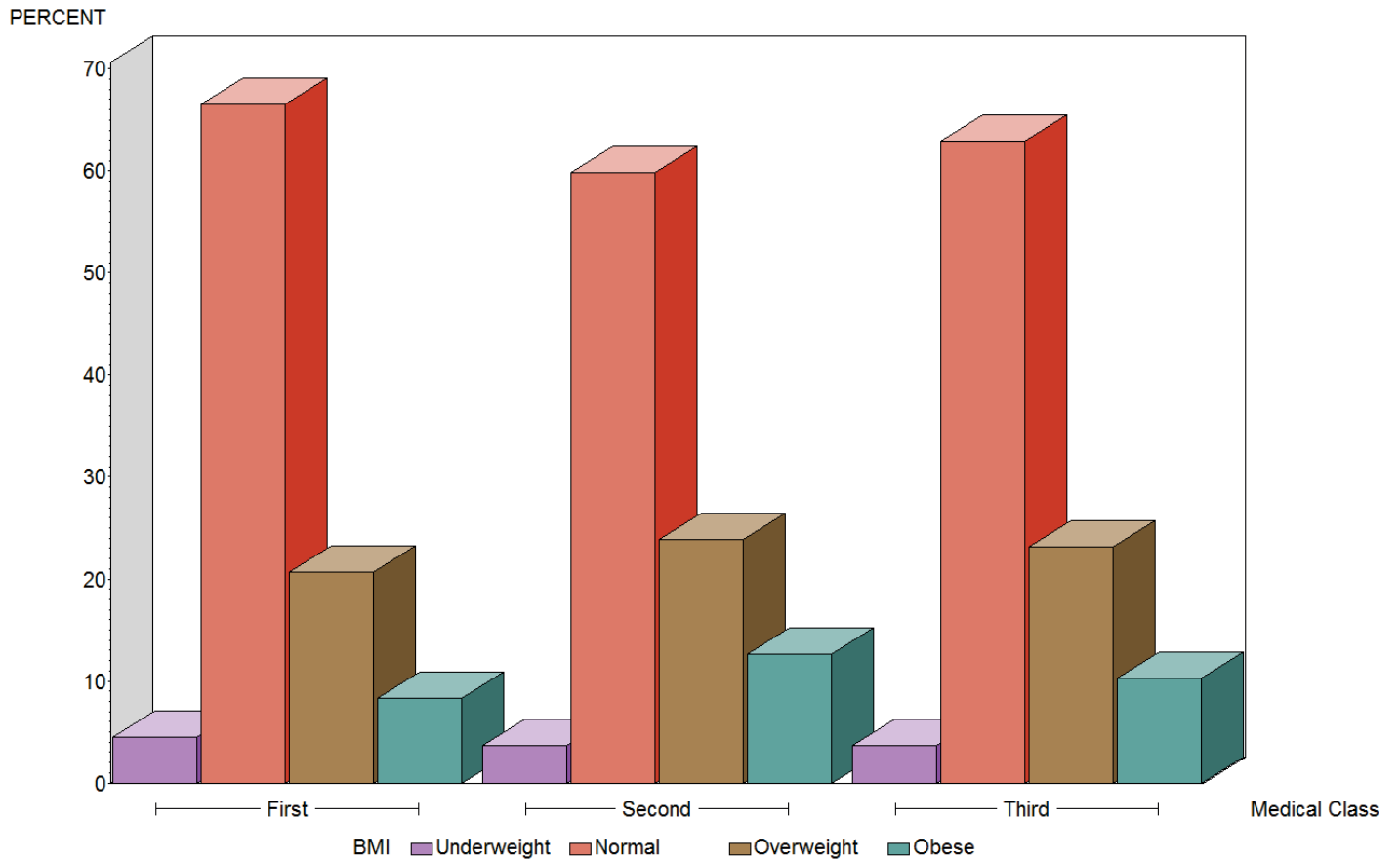


Figure 22. BMI by Issued Medical Class – Females only

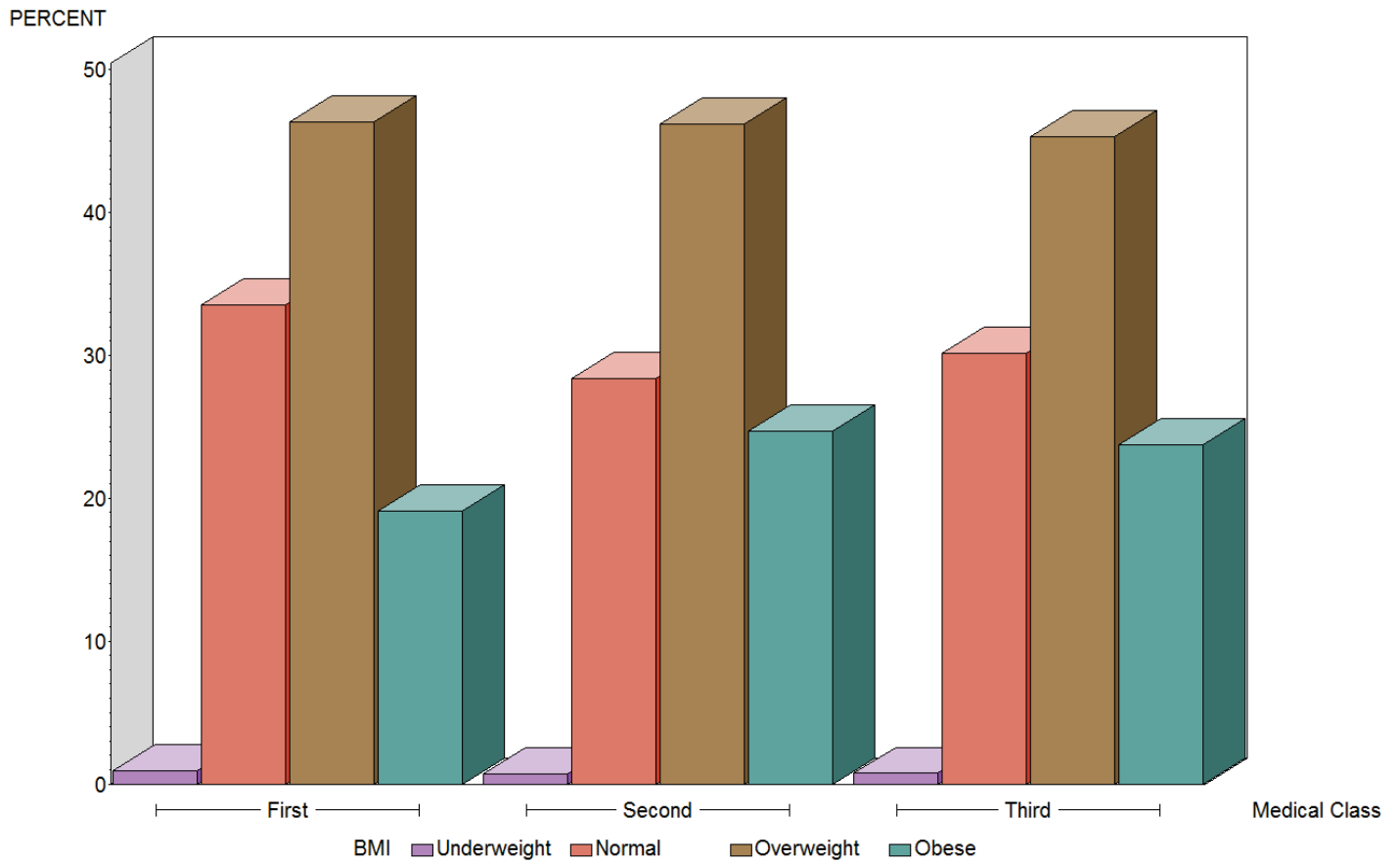


Figure 23. BMI by Issued Medical Class – Males only

Table 20. Special Issuance by Issued Medical Class, Gender, Age, and Body Mass Index

		Special Issuance	
		Yes (Percent)	No (Percent)
Class Issued	First	9,156 (4.73)	184,236 (95.27)
	Second	6,325 (5.26)	113,955 (94.74)
	Third	20,588 (7.96)	238,146 (92.04)
Gender	Female	1,235 (3.34)	35,695 (96.66)
	Male	34,834 (6.51)	500,642 (93.49)
Age at Exam	16-19	482 (1.27)	37,376 (98.73)
	20-24	616 (0.97)	63,204 (99.03)
	25-29	837 (1.46)	56,597 (98.54)
	30-34	980 (1.91)	50,273 (98.09)
	35-39	1,250 (2.46)	49,647 (97.54)
	40-44	1,774 (4.23)	40,144 (95.77)
	45-49	2,925 (5.39)	51,361 (94.61)
	50-54	4,586 (7.48)	56,752 (92.52)
	55-59	6,050 (10.53)	51,422 (89.47)
60-64	5,835 (13.55)	37,241 (86.45)	
65+	10,734 (20.23)	42,320 (79.77)	
BMI*	Underweight	123 (2.14)	5,623 (97.86)
	Normal	7,397 (3.91)	181,702 (96.09)
	Overweight	16,645 (6.56)	237,233 (93.44)
	Obese	11,903 (9.63)	111,701 (90.37)
Total		36,069 (6.30)	536,337 (93.70)

*79 airmen missing BMI

Percent with Special Issuance

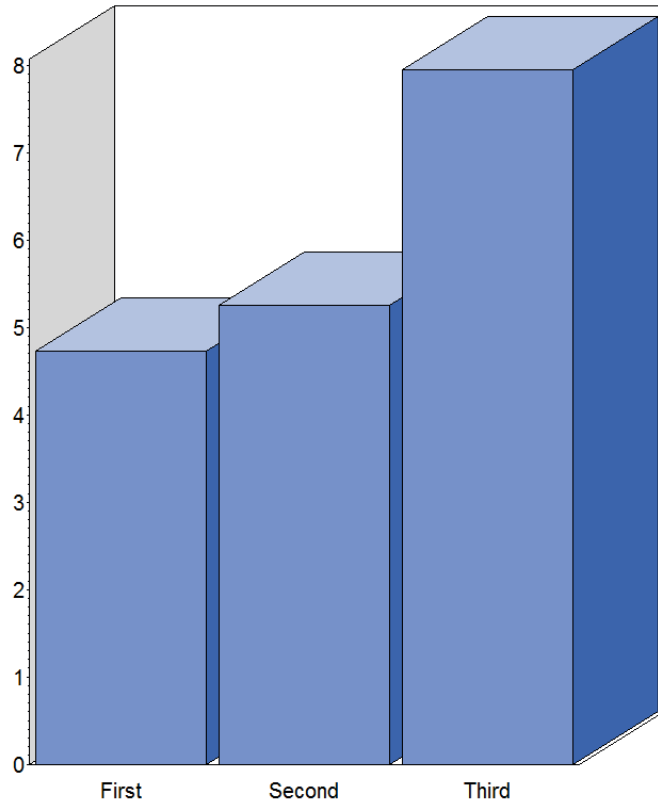


Figure 24. Special Issuance by Issued Medical Class

Percent with Special Issuance

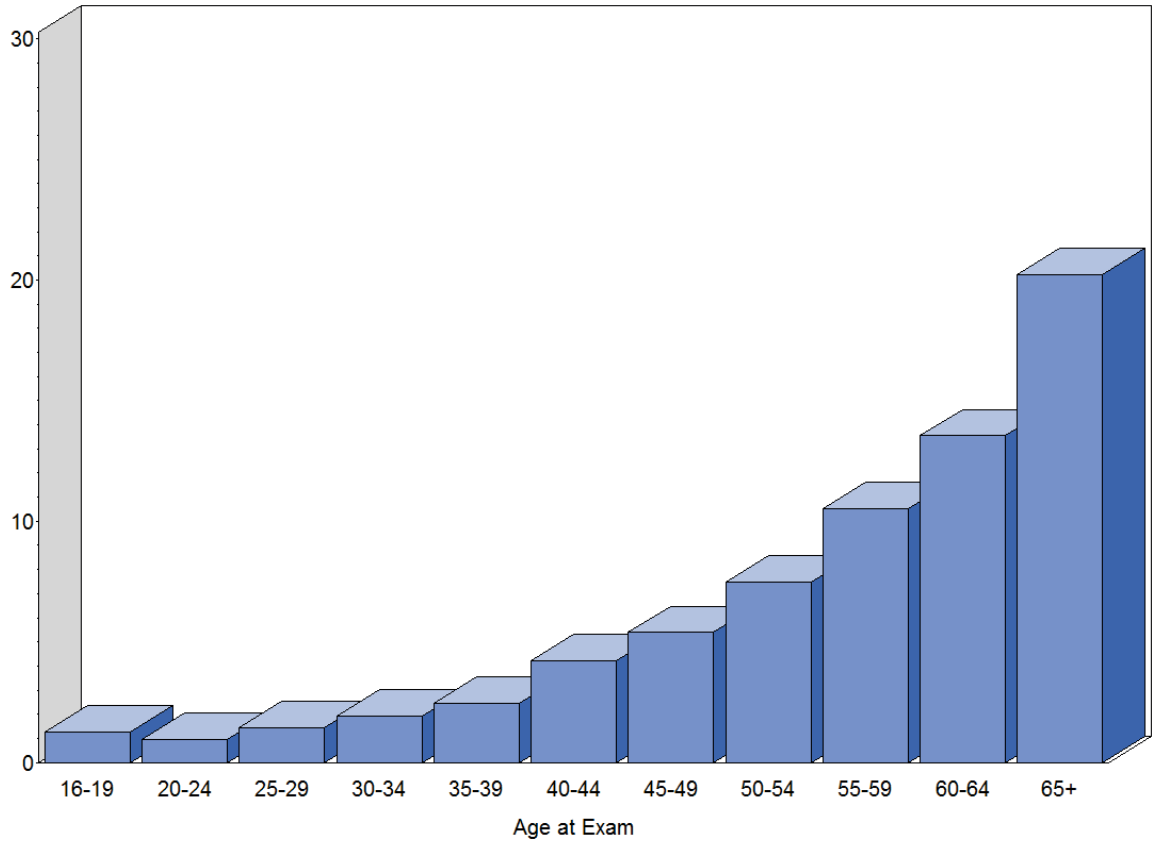


Figure 25. Special Issuance by Age Group at Time of Exam

Percent with Special Issuance

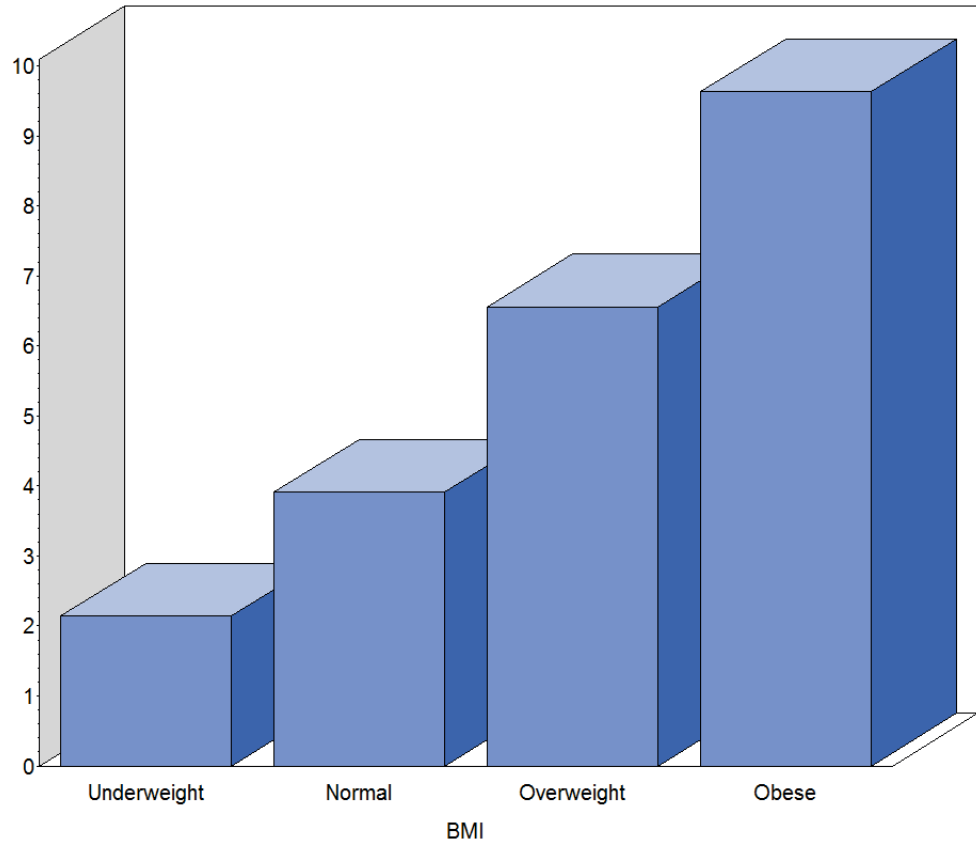


Figure 26. Special Issuance by BMI Category

Table 21. Top 15 Reported Medical Conditions

Pathology Description	Number	Percent
Hypertension with medication	62,595	10.94
Other miscellaneous allergic conditions*	38,150	6.66
Hernias – inguinal, femoral, umbilical, hiatal	29,328	5.12
Urolithiasis – stones or calculus of kidney, ureter, bladder	23,020	4.02
Other esophagus, stomach, and duodenal conditions – severe gastritis, esophageal reflux, achalasia, GERD, gastroplasty, dysphagia, dyspepsia, thrombus abdomen aorta [#]	21,645	3.78
Male genital system – prostatic, varicocele, hydrocele, transurethral resection of prostate (TURP), spermatocele, benign prostatic hypertrophy (BPH)	21,070	3.68
Other skin conditions – includes acne, abnormal pigmentation, vitiligo, psoriasis, keratosis, neurofibroma, (basal cell carcinoma), adenoma, ganglio neuroma, fibroma, fibroadenoma, neuroma, Morton's neuroma, hemangioma [‡]	15,377	2.69
Other lower extremities conditions – operations, fractures, dislocation, knee replacement, knee reconstruction, ACL reconstruction [§]	15,340	2.68
Ruptured intervertebral disk, nucleus pulposus, spinal fusion, laminectomy and spinal stenosis, compression disc, other back surgeries	14,530	2.54
Hay fever	13,849	2.42
Asthma	12,096	2.11
Other general heart pathology (abnormal ECG, open heart surgery, etc.). Wolff-Parkinson-White syndrome, ablation, AV block, right bundle branch block, left bundle branch block [†]	10,899	1.90
Hypothyroidism, underactive thyroid, euthyroid, Hashimoto	10,259	1.79
Arthritis (osteo, gout) -- degenerative joint disease	9,592	1.68
Other intestinal conditions -- diverticulitis, polyposis, appendicitis, appendectomy, colon cancer, rectal cancer, appendix cancer, colon resection	9,551	1.67

* Excludes hay fever and asthma

[#] Excludes ulcers, gastrectomy, lap band staple bypass, gastric bypass, hernias, esophageal varices

[‡] Excludes dermatitis, pilonidal cyst, significant scarring, melanoma, squamous cell carcinoma

[§] Excludes deformity of toes, foot, or leg, diseases (synovitis, arthritis, bursitis, osteomyelitis, neoplasms, polymyalgia, rheumatica, etc.), rheumatoid arthritis, unstable knee (locked knee, herniated meniscus, no patella)

[†] Excludes cardiomyopathy, pacemaker, cardiac stents, cardiac angioplasty

Table 22. Medical Conditions by Issued Medical Class

		Issued Medical Class			Total
		First	Second	Third	
Vision	Color vision deficiency*	1,556 (0.81)	1,619 (1.35)	5,745 (2.22)	8,920 (1.56)
	Monocular vision	279 (0.14)	375 (0.31)	1,265 (0.49)	1,919 (0.34)
Transplants	Lung transplant	2 (0.00)	1 (0.00)	2 (0.00)	5 (0.00)
	Heart transplant	0 (0.00)	0 (0.00)	1 (0.00)	1 (0.00)
	Liver transplant	6 (0.00)	9 (0.01)	32 (0.01)	47 (0.01)
	Kidney transplant	37 (0.02)	28 (0.02)	77 (0.03)	142 (0.02)
Cardiac	Myocardial infarction	629 (0.33)	353 (0.29)	2,026 (0.78)	3,008 (0.53)
	Coronary angioplasty with a stent	881 (0.46)	478 (0.40)	2,939 (1.14)	4,298 (0.75)
	Coronary angioplasty procedure	159 (0.08)	126 (0.10)	559 (0.22)	844 (0.15)
	Coronary artery bypass surgery	351 (0.18)	226 (0.19)	1,644 (0.64)	2,221 (0.39)
	Implanted pacemaker	69 (0.04)	66 (0.05)	349 (0.13)	484 (0.08)
	Aortic valve conditions*	590 (0.31)	396 (0.33)	1,383 (0.53)	2,369 (0.41)
	Mitral valve conditions [#]	846 (0.44)	517 (0.43)	1,872 (0.72)	3,235 (0.57)
	Hypertension with medication	13,971 (7.22)	12,752 (10.60)	35,872 (13.86)	62,595 (10.94)

Table 22 Continued. Medical Conditions by Issued Medical Class

		Medical Class Issued			Total
		First	Second	Third	
Alcohol and Drugs	Alcohol abuse/dependence	2,085 (1.08)	994 (0.83)	1,688 (0.65)	4,767 (0.83)
	Drug abuse/dependence	807 (0.42)	533 (0.44)	757 (0.29)	2,097 (0.37)
	Alcohol/Drug case monitored	1,129 (0.58)	83 (0.07)	15 (0.01)	1,227 (0.21)
	Alcohol related offense [‡]	10,375 (5.36)	7,072 (5.88)	13,065 (5.05)	30,512 (5.33)
	Drug related offense/misuse [§]	613 (0.32)	584 (0.49)	948 (0.37)	2,145 (0.37)
Other conditions of interest	Sleep apnea	1,985 (1.03)	1,437 (1.19)	3,376 (1.30)	6,798 (1.19)
	Applied for SSRI use	104 (0.05)	81 (0.07)	311 (0.12)	496 (0.09)
	SSRI special issuance	50 (0.03)	19 (0.02)	72 (0.03)	141 (0.03)
	Diabetes [†]	1,197 (0.62)	1,428 (1.19)	4,455 (1.72)	7,080 (1.24)

[¶] Color vision deficiency at initial screening test

* Includes aortic valvular disease, aortic stenosis, aortic regurgitation, aortic insufficiency, bicuspid aortic valve, also replacement, ruptured aorta or lacerated, aortic bruit

Includes mitral valve disease, mitral stenosis, mitral regurgitation, mitral insufficiency. Does not include valve replacement.

[‡] Includes DUI, DWI, public intoxication, wet/reckless, .04-.09 blood alcohol

[§] Includes drug offenses and positive drug test other than Drug Industry Program (Failed Drug Testing)

[†] Controlled by hypoglycemic drugs or insulin

