

**CALIFORNIA
MOTOR VEHICLE STOCK, TRAVEL AND FUEL
FORECAST**



California Department of Transportation

Division of Transportation System Information

December 30, 2005

**CALIFORNIA
MOTOR VEHICLE STOCK, TRAVEL AND FUEL
FORECAST (MVSTAFF)**

**GOVERNOR ARNOLD SCHWARZENEGGER
STATE OF CALIFORNIA**

**SUNNE WRIGHT MCPEAK, SECRETARY
BUSINESS, TRANSPORTATION AND HOUSING AGENCY**

**WILL KEMPTON, DIRECTOR
DEPARTMENT OF TRANSPORTATION**

**DIVISION OF TRANSPORTATION SYSTEM INFORMATION
OFFICE OF TRAVEL FORECASTING AND ANALYSIS
MODELING AND TRAVEL ANALYSIS BRANCH**

DECEMBER 2005

**This report was prepared in cooperation with the
U.S. Department of Transportation
Federal Highway Administration**

CALIFORNIA MOTOR VEHICLE STOCK, TRAVEL AND FUEL FORECAST

DECEMBER 2005

For individuals with sensory disabilities, this document is available in Braille, large print on audiocassette, or computer disk. To obtain a copy in one of these alternate formats, write to the Caltrans Division of Transportation System Information, Office of Travel Forecasting and Analysis, Modeling and Travel Analysis Branch, 1120 N Street, Room 5525, P. O. Box 942874, MS 38 Sacramento, CA 94274-0001, or call (916) 654-6925 Voice, or use the California Relay Service TTY at 1-800-735-2929. The report may be found at www.dot.ca.gov/hq/tsip.

The contents of this report reflect the view of the authors who are responsible for the facts and accuracy of the data presented herein. The contents do not necessarily reflect the official policy of the Department of Transportation. This report does not constitute a standard, specification, or regulation. This report was prepared in cooperation with U. S. Department of Transportation, Federal Highway Administration.

Table of Contents

	Page
List of Tables and Figures	ii
I. SUMMARY	1
II. INTRODUCTION	6
III. MVSTAFF PROCESS OVERVIEW	7
IV. FORECAST ASSUMPTIONS	10
V. FORECAST RESULTS	20
A. Motor Vehicle Stock	20
B. Vehicle Miles of Travel	24
C. Vehicle Fuel Consumption	28
D. Vehicle Fuel Economy	32
REFERENCES	35
APPENDIX A. Vehicle Body Type Definitions	36
APPENDIX B. California Vehicle Miles of Travel By County & Road System 1990, 1995, 2000, 2004, 2005, 2010, 2015, 2020, 2025, and 2030	37
APPENDIX C. California Vehicle Fuel Consumption By County & Fuel Type 1995, 2000, 2005, 2010, 2015, 2020, 2025 and 2030	48
APPENDIX D. California Truck Miles of Travel By County & Road System 2000, 2005, 2010, 2015, 2020, 2025 and 2030	56

List of Tables and Figures

<u>Table No.</u>		<u>Page</u>
1	California Total Vehicles	21
1.1	Statewide Total VMT and Five-Year Percent Change	24
2	California Total Vehicle Miles of Travel	25
3	California On-Road Vehicle Fuel Consumption	29
4	California Total Vehicle Fleet Fuel Economy	33

<u>Figure No.</u>		
S1	Motor Vehicle Stock, Travel and Fuel Forecast	3
S2	Percent Change by Decade in Annual VMT and Main Variables Affecting It	4
S3	California Total Vehicle Miles of Travel 1965 – 2030	5
S4	California Total Vehicle Fuel Consumption 1965 - 2030	5
1	Motor Vehicle Stock, Travel and Fuel Forecasting Process	9
2	California Total Population 2004 - 2030	12
3	U. S. Consumer Price Index 2004 - 2030	13
4	California Total Personal Income in 1967 Dollars	14
5	California Personal Income Per Person in 1967 Dollars	15
6	Gasoline Price Per Gallon in 1967 Dollars	16
7	Prime Lending Rate 2004 - 2030	17
8	California Total Vehicles 2004 - 2030	19
9	California Total Vehicles by Body Type	22
10	California Total Vehicle Miles of Travel	23
11	California Vehicle Miles of Travel by Body Type	26
12	California Total Vehicle Fuel Consumption	27
13	California Vehicle Fuel Consumption by Body Type	30
14	California Total Vehicle Fleet Fuel Economy	31
15	California Vehicle Fleet Fuel Economy by Body Type	34

I. SUMMARY

This is the twenty-first of a series of California Motor Vehicle Stock, Travel and Fuel Forecast (MVSTAFF) reports. These reports provide historical estimates and forecasts of the number of registered vehicles, miles of travel, fuel consumption, and fuel economy on a statewide basis. The forecasts are disaggregated into six vehicle body types (autos, four weight classes of trucks, and motorcycles) and two fuel types (gasoline and diesel).

The forecasts are primarily intended for short and long range statewide transportation planning, traffic forecasting and projections of revenues from excise taxes on fuel. In response to numerous requests, the statewide vehicle miles of travel (VMT) forecasts are distributed among the 58 counties and two major road systems (State Highways and all "Other" public roads) for sub-state planning, including transportation and air quality modeling and analysis. For the purpose of air quality conformity analysis, the 1990 county VMT table is included in the appendix. Also included in this report are the vehicle fuel consumption (VFC) distributions by the 58 counties and the two fuel types, gasoline and diesel.

The MVSTAFF process requires long-term projections of statewide population, economic growth (total personal income), fuel prices, inflation, and interest rates. For this forecast, population numbers were obtained from the latest California Department of Finance (DOF) population projection reports (Ref. 3 and 4). Income projections and other variables, including fuel price, were derived from, "The UCLA Anderson Forecast for the Nation and California," September 2005 (Ref. 1). The MVSTAFF forecast, therefore, reflects the same scenario superimposed on the DOF population and the existing legislation regarding current and future sales and excise taxes on fuel. The socioeconomic assumptions are further documented in the report.

The forecast results are summarized in Figure-S1. For the current year (2005), total VMT, and VFC are both projected to increase by 0.30 percent and 0.30 percent respectively from the previous year.

In 2006, the economy is expected to increase slightly. Real total personal income per person (IPP) increases by 2.20 percent. Total vehicles, VMT and fuel consumption are projected to increase moderately by 2.12 percent, 2.07 percent and 1.73 percent respectively.

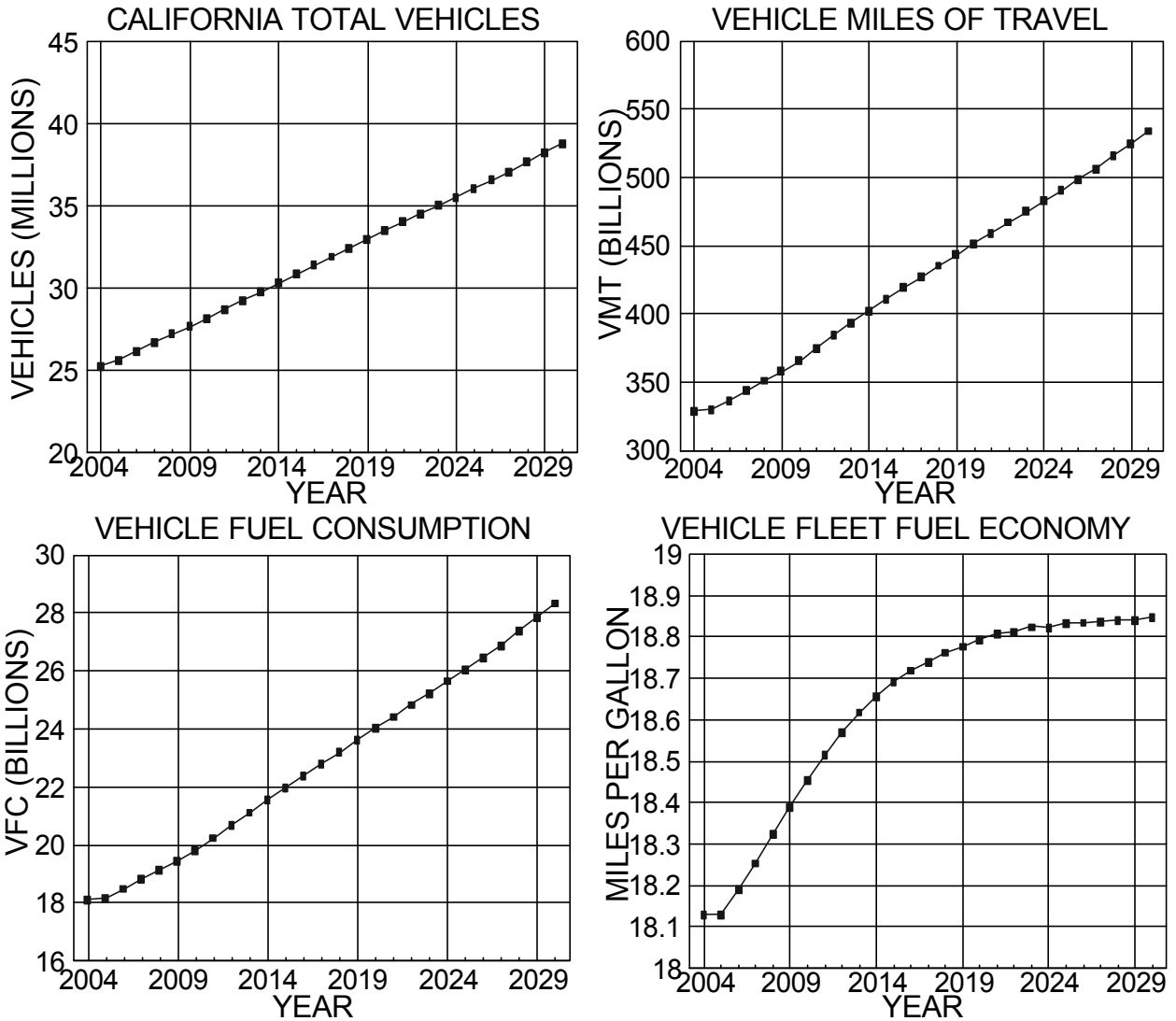
The long-term forecast is for total vehicles, vehicle travel, and fuel consumption to continue to increase but at declining rates. Under the assumption that the Corporate Average Fuel Economy (CAFE) standard for new cars will remain at 27.5 miles per gallon, and the projected increase in the proportion of heavy duty truck travel, the fleet fuel economy will continue to increase and reach a value of 18.85 miles per gallon by year 2030.

Past and projected growth in California VMT are affected by population, real total personal income per person (IPP), vehicles per person (VPP), and the fuel cost per mile (FCPM) of travel, all of which are put in a historical perspective in Figure-S2. The following summarizes the historical reasons for VMT change:

- The 1950s experienced a 71 percent increase in VMT which was driven primarily by a 49 percent increase in population and helped along with moderate increases in per capita total personal income and vehicle ownership.
- The 1960s experienced a 64 percent increase in VMT although population grew at about half the rate that it did in the 1950s (26 percent vs. the previous 49 percent). The driving force in the 1960s would appear to be the growth in per capita income and vehicle ownership, the highest in the 50-year history.
- The 1970s produced a 38 percent increase in VMT as a result of a low increase in population, a slow economy, and a 55 percent rise in fuel prices in the last half of the decade.
- The 1980s experienced a 62 percent increase in VMT rivaling its growth in the 1950s and 1960s. At the same time, per capita income and vehicle ownership grew by 12 percent and 7 percent, respectively. Growth in VMT in the 1980s can be attributed to strong population gains of 26 percent and the precipitous drop in the real fuel cost per mile of travel of 57 percent, resulting from a 45 percent drop in the real price of fuel and a 30 percent increase in the on-road fleet fuel economy.
- The 1990s saw a 19 percent increase in VMT as population growth slowed down to 15 percent. Personal income showed a 9 percent moderate growth, and fuel cost per mile increased 12 percent due to a sharp increase in fuel prices in 1999 and 2000.
- In the 2000s, VMT is projected to grow 20 percent as population growth rates increase similar to 1990s. Fuel cost per mile is expected to increase 15 percent in the 2000s. Most of the increase was in the first half of the decade.
- In the 2010s, VMT is projected to grow 24 percent as the population increases 12 percent. Personal income increases 24 percent. Fuel cost per mile is forecasted to drop 7.1 percent in 10 years.
- In the 2020s, VMT is projected to grow 18 percent as population grows 10 percent. Personal income increases 27 percent. Fuel cost per mile is forecasted to drop 0.6 percent in 10 years.

Estimates of total system and State Highway System VMT for the period 1965-2030 are shown in Figure-S3. Estimates of gasoline, diesel, and total fuel consumption for the years 1965-2030 are shown in Figure-S4.

Figure-S1
Motor Vehicle Stock, Travel and Fuel Forecast

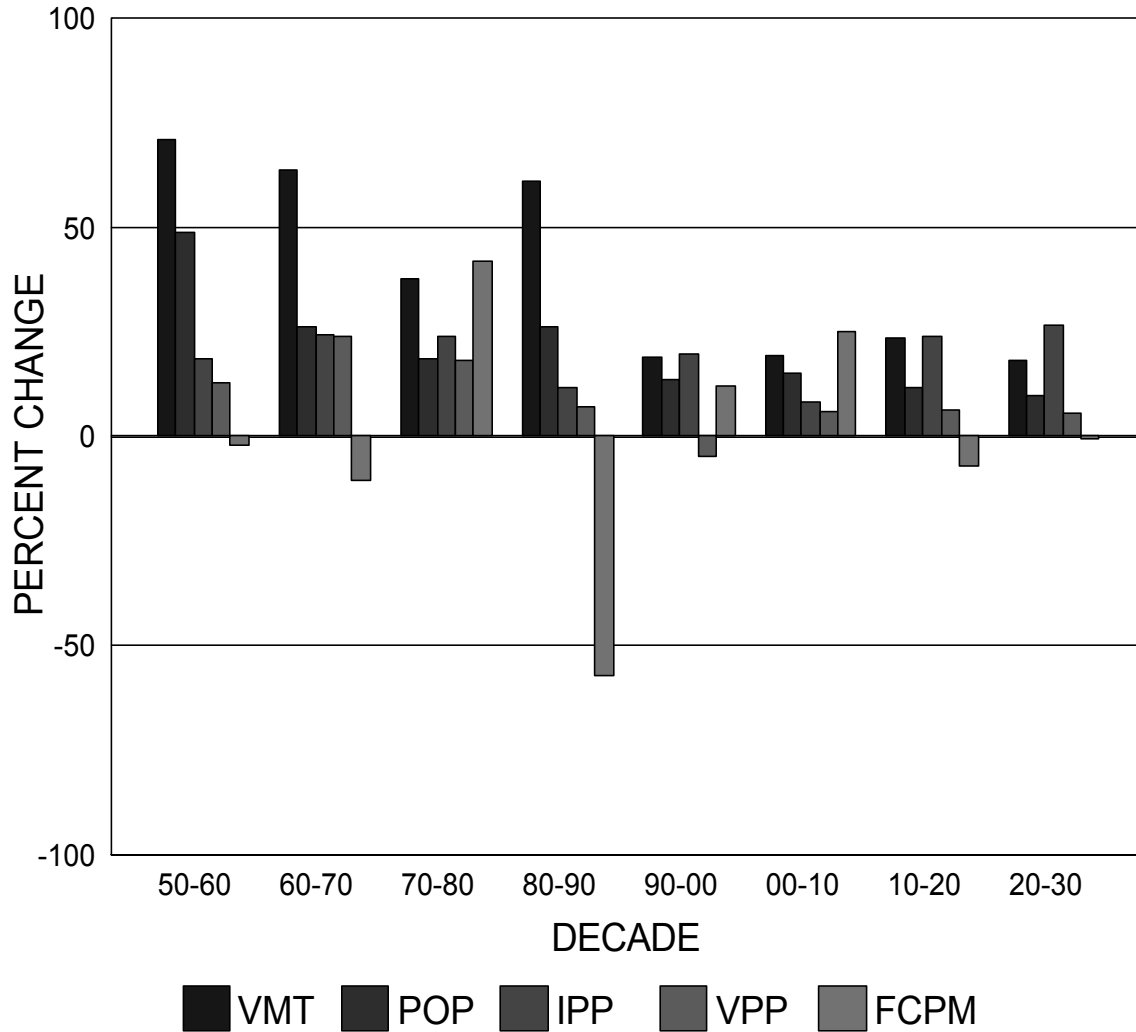


CALIFORNIA TOTAL VEHICLES, VMT, FUEL AND MPG FORECAST

YEAR	VEH	VMT	VFC	MPG	YEAR	VEH	VMT	VFC	MPG
2004	25.26	328.6	18.13	18.13	2018	32.45	435.3	23.20	18.76
2005	25.63	329.6	18.18	18.13	2019	32.99	443.5	23.62	18.78
2006	26.17	336.5	18.50	18.19	2020	33.52	451.7	24.03	18.79
2007	26.71	344.0	18.84	18.25	2021	34.02	459.4	24.43	18.81
2008	27.21	351.1	19.16	18.32	2022	34.54	467.3	24.84	18.81
2009	27.69	358.0	19.47	18.39	2023	35.05	475.1	25.24	18.83
2010	28.18	365.6	19.81	18.45	2024	35.56	483.0	25.66	18.82
2011	28.72	374.8	20.24	18.52	2025	36.07	490.8	26.06	18.83
2012	29.26	384.5	20.70	18.57	2026	36.57	498.5	26.47	18.84
2013	29.79	393.4	21.13	18.62	2027	37.08	506.4	26.88	18.84
2014	30.33	402.2	21.56	18.66	2028	37.66	515.7	27.37	18.84
2015	30.86	411.0	21.99	18.69	2029	38.24	525.0	27.86	18.84
2016	31.40	419.2	22.39	18.72	2030	38.81	534.1	28.34	18.85
2017	31.93	427.3	22.80	18.74					

Figure-S2

PERCENT CHANGE BY DECADE IN ANNUAL VMT AND THE MAIN VARIABLES AFFECTING IT



VMT: Vehicle Miles of Travel

POP: Population

IPP: Total Personal Income Per Person (67\$)

VPP: Vehicles Per Person

FCPM: Fuel Cost Per Mile

Figure-S3
 CALIFORNIA TOTAL VEHICLE MILES OF TRAVEL (1965 - 2030)

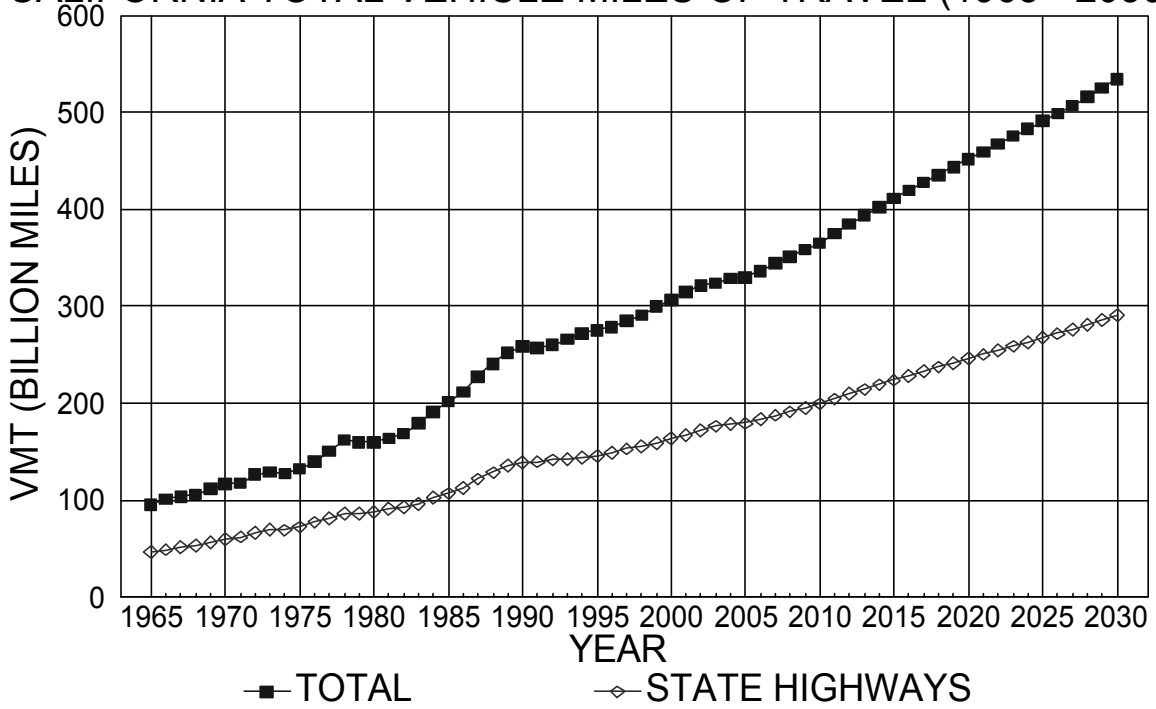
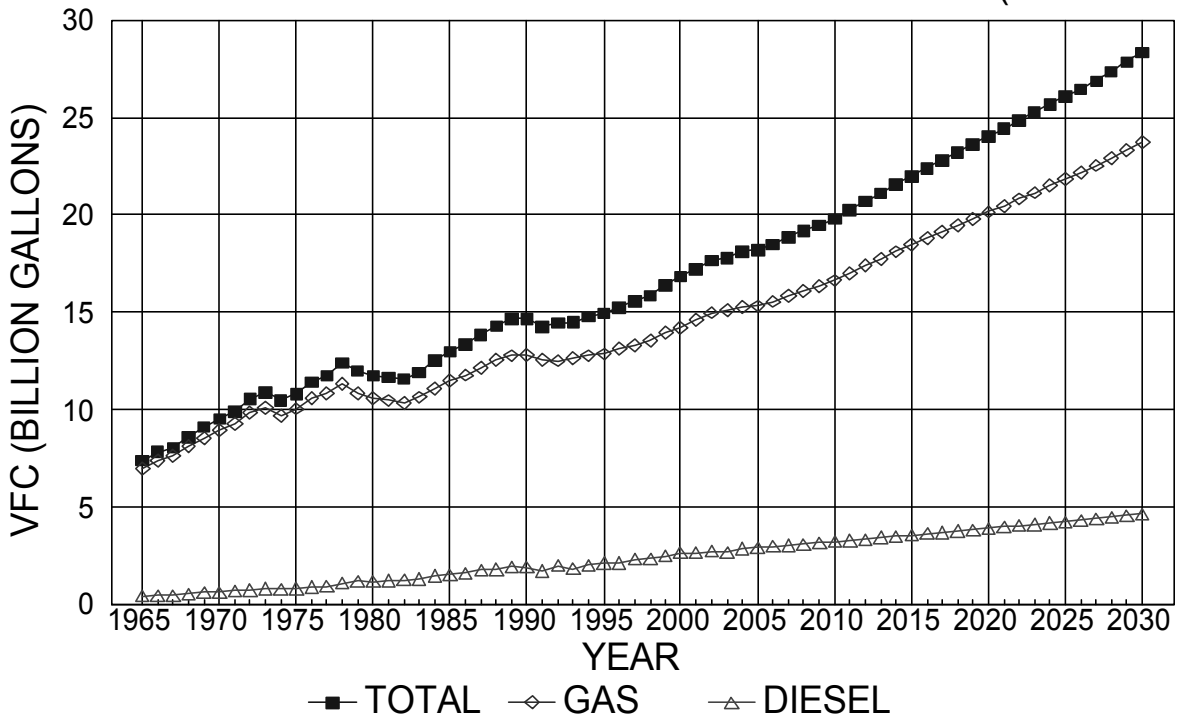


Figure-S4
 CALIFORNIA TOTAL VEHICLE FUEL CONSUMPTION (1965 - 2030)



II. INTRODUCTION

The California Department of Transportation utilizes estimates and forecasts of statewide VMT and VFC for a number of planning and reporting purposes. For example, estimates of VMT are needed annually for the FHWA-mandated Highway Performance Monitoring System (HPMS) program, and as input to the California Highway Patrol annual reporting system. Intermediate and long-term forecasts of VMT and VFC are used for system planning, projections of revenues from excise taxes on fuels, and air quality and energy conservation programs. To ensure that the forecasts are produced with appropriate, consistent and state-of-the-art methodologies, the Division of Transportation System Information has developed the MVSTAFF process which it updates on a continuous basis. The results of applying the process are summarized in the MVSTAFF report which has been published annually since 1984, except for 1990.

The forecasts are based on socioeconomic data developed by the Office of Travel Forecasting and Analysis of the Division of Transportation System Information using the latest DOF (Ref. 3 and 4) and the University of California at Los Angeles (UCLA) Anderson Forecast (Ref. 1) on population and economic projections. These forecasts are primarily intended for use at the statewide level. However, the statewide total VMT forecasts have been allocated down to the county level in response to numerous requests for data at a sub-state level for transportation and air quality modeling and analysis.

The remaining sections of the report follow the outline listed below:

- An overview of the MVSTAFF process.
- A brief description of the socioeconomic projections, which drive the forecasting process.
- A brief description of the forecast results.
- The appendices provide the county VMT (Appendix B), VFC (Appendix C), and truck miles of travel (TMT) (Appendix D) distribution based on statewide forecasts. The statewide total VMT and truck VMT are distributed to the 58 counties by State Highways and for all "Other" public roads. The statewide VFC are distributed to the 58 counties by gasoline fuel and diesel fuel.

III. MVSTAFF PROCESS OVERVIEW

The MVSTAFF process is a recursive procedure, which estimates, for each year of the forecast period, the following:

- The motor vehicle stock (average number of currently registered vehicles) by six body types, two fuel types, and 25 model years or age groups
- The fuel economy of the total fleet and each model year
- The vehicle travel and fuel consumption for the total fleet and each model year

The process consists of four major parts, which are outlined in Figure-1 and briefly described below.

1. Inventories

- Base year estimates and future year projections of the socioeconomic variables are assumed to be the causative factors for acquiring vehicles and generating travel, base year fuel consumption, and explicit assumptions about new vehicle fuel economy.
- The base year vehicle stock is stratified by vehicle type and model year, and derived estimates of the on-road fuel economy of each stratum of vehicles in the base year fleet.

2. The Stratified Rate Model

- When applied to the base year inventory, this model estimates base year vehicle travel, fuel consumption and fuel economy for each vehicle type and the total fleet.
- When applied in the forecasting mode, the Stratified Rate Model first updates the composition and fuel economy of the fleet by one year and then estimates the next year's stratified fleet, vehicle travel, fuel consumption and fuel economy.
- Imbedded in the Stratified Rate Model are sub-models which forecast the total number of vehicles by vehicle type, new vehicles, in-migration vehicles, and scrap value of old vehicles and the fuel economy of new vehicles under explicit socioeconomic assumptions.

3. The Statewide Aggregate VMT and VFC Model

- The Statewide Aggregate model accepts the vehicle fleet fuel economy from the Stratified Rate Model and socioeconomic data from the inventory. It estimates next year's statewide total VMT and VFC without regard to vehicle body type. Because

the Aggregate Model is more directly linked to socioeconomic variables, the VMT forecasts from the model are used as control totals for the forecast years.

4. A Comparison/Adjustment Model

- The Comparison/Adjustment model compares and adjusts the total VMT and VFC from the Stratified Rate Model to match that from the Aggregate Model. As part of the comparison/adjustment process, statewide total diesel fuel is forecasted with a Diesel Fuel Consumption Model, and gasoline fuel is computed as the difference between total fuel and diesel fuel. Following the comparison/adjustment step, future year VMT, VFC, and vehicle fuel economy (VFE) for each vehicle type are calculated.

The above sequence produces the "next year" forecast. The process is then recursively applied to produce forecasts for each succeeding year in the forecast period.

Statewide VMT from the above process is distributed to the 58 counties and two major road systems (State Highways and all "Other" public roads) as follows:

For the base year, county VMT on State Highways is obtained directly from the Division of Traffic Operations' annual Traffic Accident Surveillance and Analysis System (TASAS) file. County VMT on all other public roads, except that on the local road functional class, is estimated from the annual HPMS file. Local road VMT cannot be obtained from either TASAS or HPMS. Therefore, statewide local road VMT is calculated as the difference: statewide total VMT (MVSTAFF) minus State Highway VMT (TASAS) and other road VMT (HPMS). Statewide local road VMT is then allocated to each county on the basis of the relative distribution of the quantity, "county automobile registrations times the proportion of local road mileage to the total system mileage."

For future years, the statewide VMT from MVSTAFF is distributed by applying county-specific, annualized growth rates to the base year county estimates described above. The county-specific growth rates are calculated from county population estimates recently published by the Department of Finance. The annualized rates are normalized so that the sum of counties' VMT equals the MVSTAFF statewide VMT.

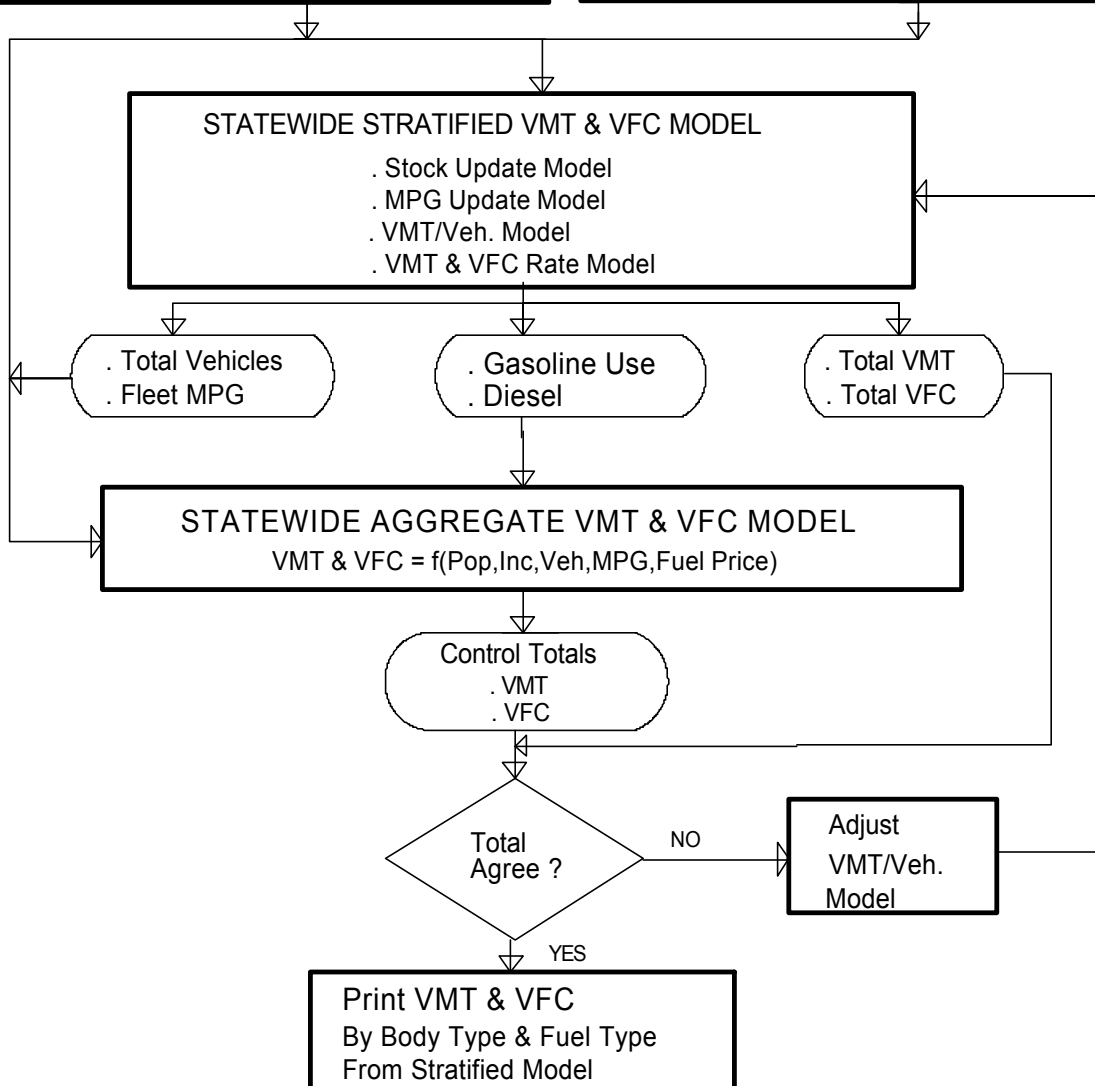
Statewide VFC is distributed to the 58 counties and the two fuel types, gasoline and diesel, using estimates of county VMT, Truck Miles of Travel (TMT), and statewide estimates of VFE.

For purposes of TMT, trucks are defined as vehicles having at least two axles and six tires. The county TMT distributions are based on the latest available county TMT and VMT distributions and the forecast year county VMT estimates.

Figure-1

MOTOR VEHICLE STOCK, TRAVEL AND FUEL FORECASTING PROCESS

BASE YEAR DATA AND FUTURE YEAR ASSUMPTIONS			BASE YEAR VEHICLE STOCK (BY MODEL YEAR, BODY TYPE, FUEL TYPE)		
	BASE YEAR	FUTURE YEAR	YEAR MODEL	NO. OF VEHICLES 1 2 . . . 11 T	FUEL ECONOMY 1 2 . . . 11 T
. Population	x	x	y		
. Personal Income	x	x	y-1		
. Prime Rate	x	x	y-2		
. Fuel Price (PPG)	x	x	.		
. Lic. Driver	x	x	.		
. Gasoline Use	x		.		
. Diesel Use	x		y-25		
. New Vehicle VFE	x	x	Bal		
. Assumptions			Total		



IV. FORECAST ASSUMPTIONS

As discussed in the previous section and shown in Figure-1, the MVSTAFF process requires base year estimates and future year projections of a number of socioeconomic variables and explicit assumptions regarding the fuel economy of the vehicle fleet, by vehicle type. The assumptions made regarding the key variables, that drive the forecasting process, are briefly described below.

A. SOCIOECONOMIC ASSUMPTIONS

Base year (2004) estimates of population and the economic variables were obtained from the DOF, the state's official source of such information. Future year population was also obtained from DOF. The Division of Transportation System Information developed projections of the economic variables based on the information in the "UCLA Anderson Forecast for the Nation and California, September 2005" (Ref. 1). The MVSTAFF forecasts, therefore, reflect the same scenario imposed on the DOF population projections and the existing legislation regarding current and future taxes on fuel.

The resulting projections, which were used in the forecast, are shown graphically and in tabular form in Figures 2 to 7. A brief discussion of each variable is given below.

1. Population

Population projections for the years 2004-2030 were the latest data available from DOF (Ref. 3 & 4). These projections are shown in Figure-2. The State's population is projected to continue to increase. The rate of increase is 1.31 percent in 2005 and 1.30 percent in 2006 and then falls to a low of 0.85 percent in 2030. The annual average rate of increase is 1.08 percent.

2. Inflation Assumptions: The U.S. Consumer Price Index

Projections of total personal income and motor vehicle fuel prices are normally made on a current dollar basis. Because the MVSTAFF process operates on a constant dollar basis, these need to be adjusted for inflation by dividing them by projections of the U.S. Consumer Price Index (U.S. CPI). The projections of the U.S. CPI to 2030 are shown in Figure-3.

Figure-3 shows that the CPI is projected to increase at an average rate of 3.15 percent per year throughout the forecast period.

3. Total Personal Income Per Person

Statewide total personal IPP is an important variable in a number of forecasting models used in the MVSTAFF process. For example, it is a major determinant of new car sales, vehicle ownership and annual miles of travel per person.

The 2004 base year IPP was also from DOF. The annual percentage growth rates for the future years were derived from DOF and the UCLA Anderson Forecast for the Nation and California, September 2005 (Ref. 1).

The forecast of statewide total personal income (TPI), in 1967 dollars, is shown in Figure-4, and the forecast of total personal IPP in Figure-5. As can be seen, total personal income is expected to increase 3.11 percent and total personal IPP is expected to increase 1.77 percent respectively in 2005. Total personal income is projected to increase at an annual average rate of 3.40 percent for the forecast period. The income per person growth rates follow a similar pattern but at a lower rate which average to an annual rate of about 2.29 percent.

4. Fuel Price

Fuel price is one of the most important variables in projecting future VMT and VFC. This is because: (a) it directly and significantly determines the amount of vehicular travel; (b) over the past 20 years it has had the greatest variability of any of the socioeconomic variables used to forecast VMT and VFC; and (c) it influences the fuel economy of the new vehicle fleet which directly impacts fuel consumption.

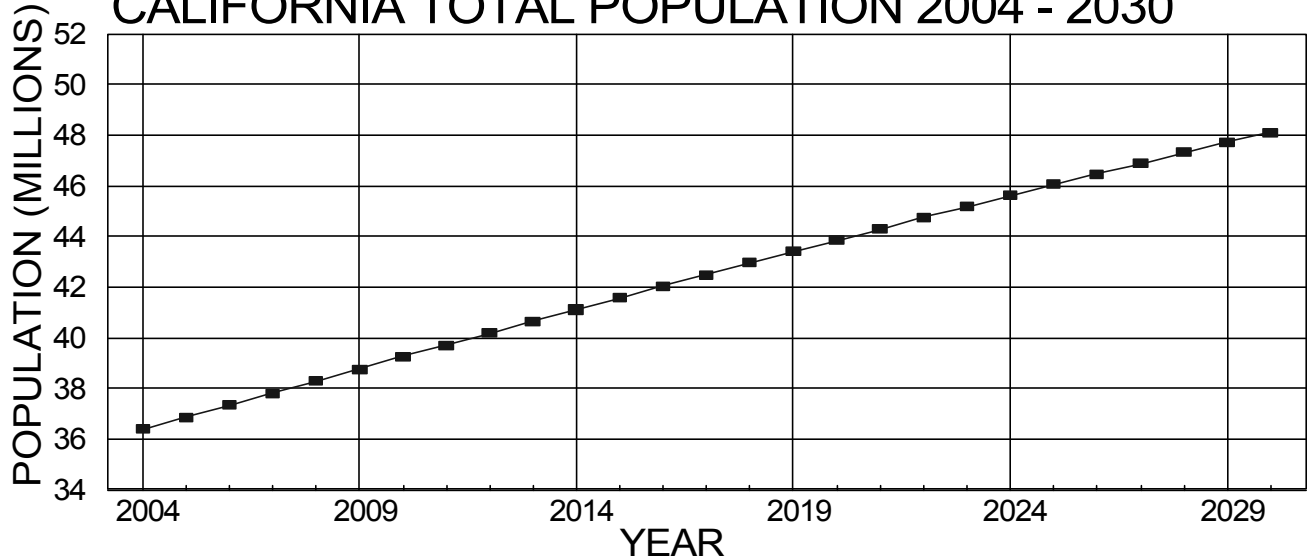
The fuel price variable used in the forecasting process is the price of gasoline, averaged over all grades, and full service and self-service sales. The price includes all excise taxes but not sales taxes. Projected gasoline prices in constant 1967 dollars are given in Figure-6. They were estimated using the UCLA Anderson Forecast gasoline price forecast.

Figure-6 shows the projected fuel prices in constant 1967 dollars. Fuel price is expected to continue to be high after 2004. The average annual rate of change over the forecast period is less than 0.2 percent.

5. Prime Lending Rate

The prime-lending rate is one of the variables used to estimate new vehicle sales, which is needed to annually update the vehicle fleet. The prime commercial bank rates for this year's forecast are given in Figure-7. The rate increased in 2005 to 6.18 from a low of 4.34 percent. The rate then increases slightly for the forecast period. The rates are very stable and generally are between 6 and 7 percent.

Figure-2
CALIFORNIA TOTAL POPULATION 2004 - 2030

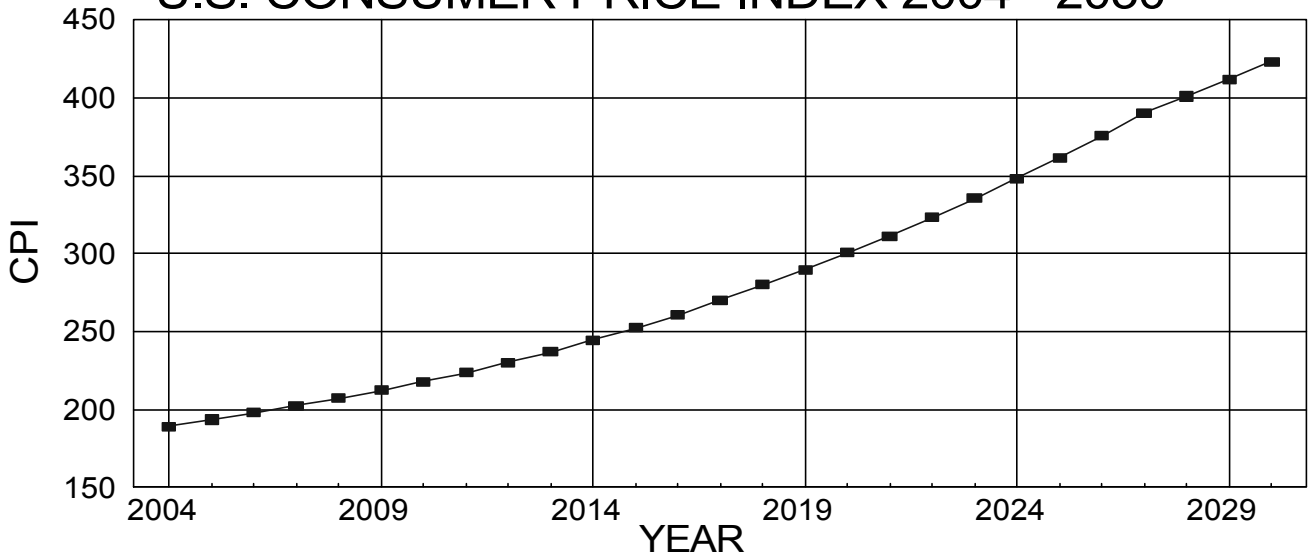


CALIFORNIA TOTAL POPULATION 2004-2030

Year	Population	%-CH
2004	36.376	
2005	36.854	1.314
2006	37.335	1.304
2007	37.810	1.273
2008	38.289	1.266
2009	38.768	1.251
2010	39.247	1.236
2011	39.714	1.190
2012	40.179	1.172
2013	40.645	1.158
2014	41.109	1.142
2015	41.571	1.124
2016	42.032	1.108
2017	42.490	1.091
2018	42.947	1.075
2019	43.401	1.058
2020	43.852	1.038
2021	44.299	1.019
2022	44.741	0.998
2023	45.179	0.979
2024	45.612	0.959
2025	46.041	0.940
2026	46.465	0.921
2027	46.884	0.902
2028	47.299	0.884
2029	47.707	0.865
2030	48.111	0.845

Population in Millions

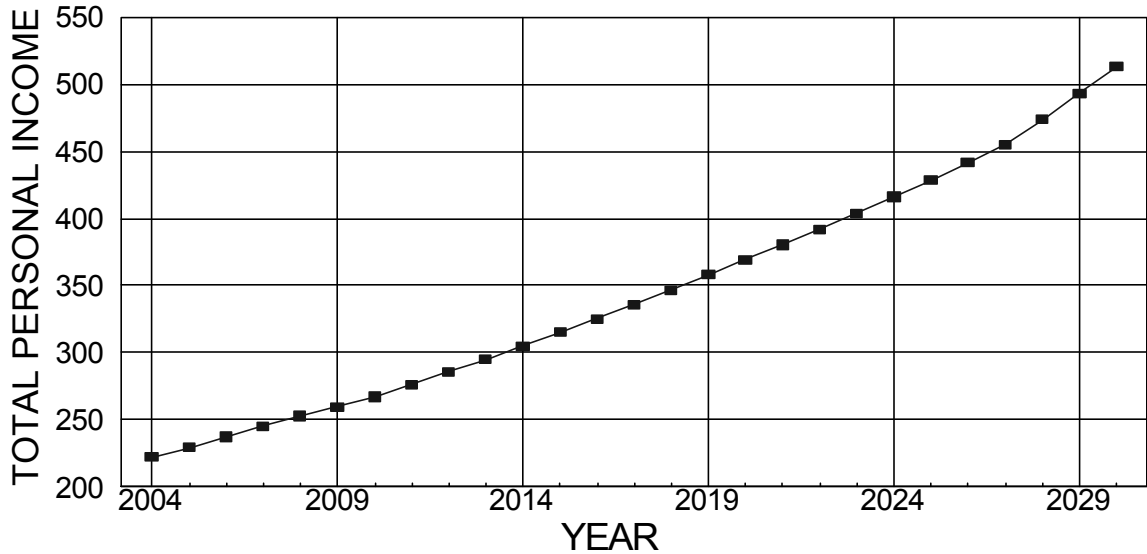
Figure-3
U.S. CONSUMER PRICE INDEX 2004 - 2030



U.S. CONSUMER PRICE INDEX, 1982-1984=100

Year	CPI	%-CH
2004	188.900	
2005	193.700	2.541
2006	198.000	2.220
2007	202.300	2.172
2008	207.300	2.472
2009	212.500	2.508
2010	217.800	2.494
2011	223.700	2.709
2012	230.100	2.861
2013	237.000	2.999
2014	244.400	3.122
2015	252.300	3.232
2016	260.800	3.369
2017	270.000	3.528
2018	279.800	3.630
2019	289.800	3.574
2020	300.400	3.658
2021	311.400	3.662
2022	323.100	3.757
2023	335.200	3.745
2024	347.900	3.789
2025	361.300	3.852
2026	375.500	3.930
2027	390.200	3.915
2028	400.800	2.717
2029	411.700	2.720
2030	423.000	2.745

Figure-4
CALIFORNIA TOTAL PERSONAL INCOME IN 1967 DOLLARS

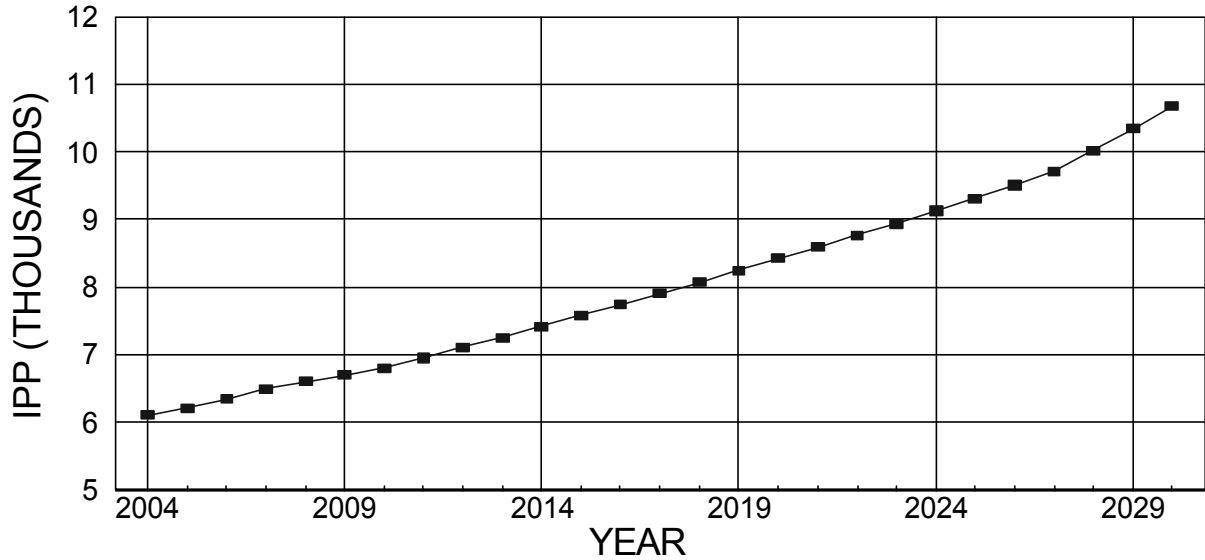


CALIFORNIA TOTAL PERSONAL INCOME IN 1967 DOLLARS

Year	TPI	%-CH
2004	222.071	
2005	228.973	3.108
2006	237.063	3.533
2007	245.320	3.483
2008	252.708	3.012
2009	259.590	2.723
2010	266.991	2.851
2011	276.027	3.384
2012	285.660	3.490
2013	294.946	3.251
2014	304.842	3.355
2015	314.935	3.311
2016	325.352	3.308
2017	335.881	3.236
2018	346.423	3.139
2019	357.854	3.300
2020	369.381	3.221
2021	380.330	2.964
2022	392.089	3.092
2023	403.766	2.978
2024	416.294	3.103
2025	428.706	2.982
2026	441.697	3.030
2027	455.432	3.109
2028	474.117	4.103
2029	493.476	4.083
2030	513.526	4.063

TPI in Billions (67\$)

Figure-5
CALIFORNIA PERSONAL INCOME PER PERSON



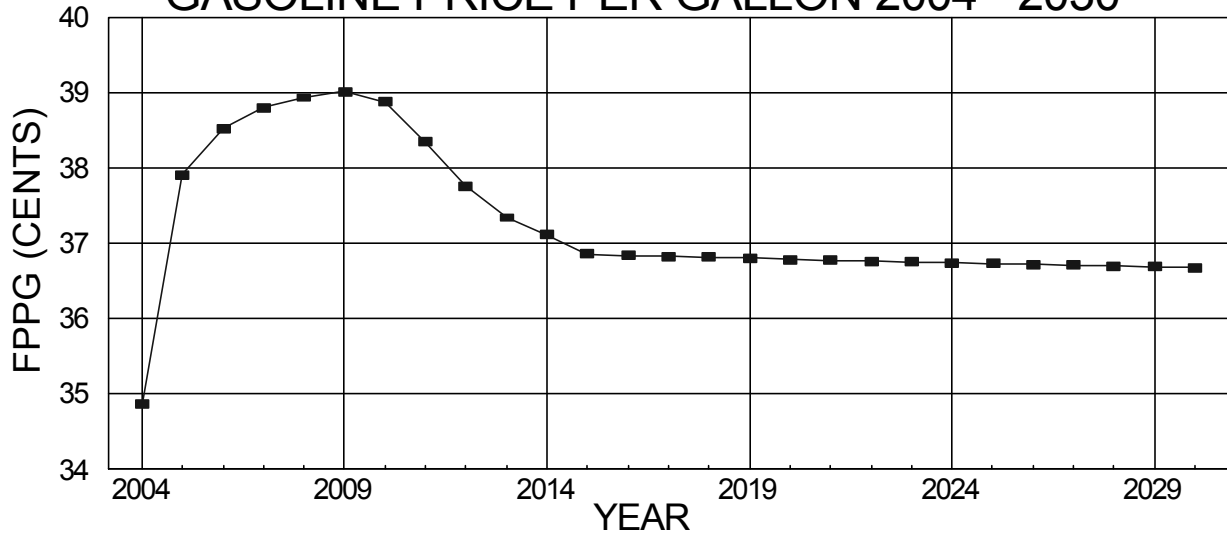
CALIFORNIA PERSONAL INCOME PER PERSON

Year	IPP	%-CH
2004	6.105	
2005	6.213	1.771
2006	6.350	2.200
2007	6.488	2.183
2008	6.600	1.724
2009	6.696	1.454
2010	6.803	1.596
2011	6.950	2.168
2012	7.110	2.291
2013	7.257	2.069
2014	7.416	2.188
2015	7.576	2.162
2016	7.741	2.175
2017	7.905	2.122
2018	8.066	2.042
2019	8.245	2.219
2020	8.423	2.160
2021	8.586	1.926
2022	8.764	2.073
2023	8.937	1.980
2024	9.127	2.123
2025	9.311	2.023
2026	9.506	2.090
2027	9.714	2.187
2028	10.024	3.191
2029	10.344	3.191
2030	10.674	3.191

IPP in Thousands (67\$)

Figure-6

GASOLINE PRICE PER GALLON 2004 - 2030

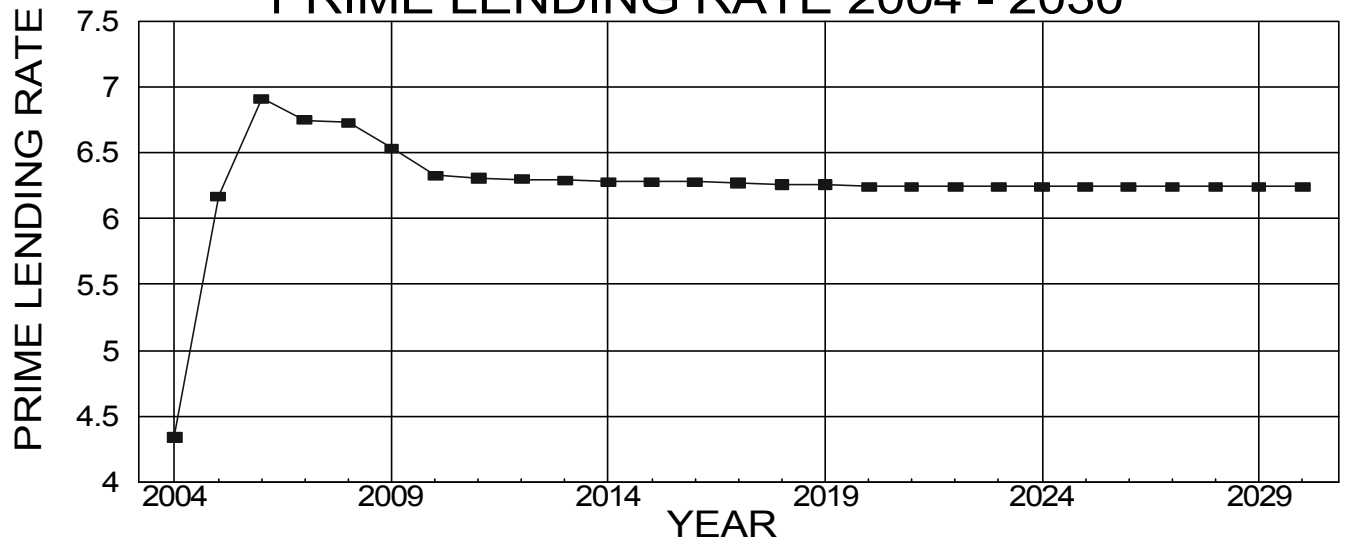


GASOLINE PRICE PER GALLON IN 1967 DOLLARS

Year	Price	%-CH
2004	34.857	
2005	37.902	8.737
2006	37.746	-0.411
2007	37.646	-0.266
2008	37.554	-0.245
2009	37.374	-0.478
2010	37.057	-0.848
2011	36.557	-1.350
2012	35.989	-1.554
2013	35.595	-1.094
2014	35.376	-0.614
2015	35.131	-0.693
2016	35.117	-0.040
2017	35.104	-0.038
2018	35.091	-0.037
2019	35.078	-0.036
2020	35.066	-0.034
2021	35.055	-0.033
2022	35.043	-0.032
2023	35.033	-0.031
2024	35.022	-0.030
2025	35.012	-0.029
2026	35.002	-0.028
2027	34.993	-0.027
2028	34.984	-0.026
2029	34.975	-0.025
2030	34.967	-0.025

Price in Cents (67\$)

Figure-7
PRIME LENDING RATE 2004 - 2030



PRIME LENDING RATE 2004-2030

Year	Prime	%-CH
2004	4.340	
2005	6.170	42.166
2006	6.910	11.994
2007	6.750	-2.315
2008	6.730	-0.296
2009	6.533	-2.927
2010	6.326	-3.169
2011	6.307	-0.300
2012	6.298	-0.143
2013	6.289	-0.143
2014	6.279	-0.159
2015	6.279	0.000
2016	6.279	0.000
2017	6.270	-0.143
2018	6.261	-0.144
2019	6.261	0.000
2020	6.242	-0.303
2021	6.242	0.000
2022	6.242	0.000
2023	6.242	0.000
2024	6.242	0.000
2025	6.242	0.000
2026	6.242	0.000
2027	6.242	0.000
2028	6.242	0.000
2029	6.242	0.000
2030	6.242	0.000

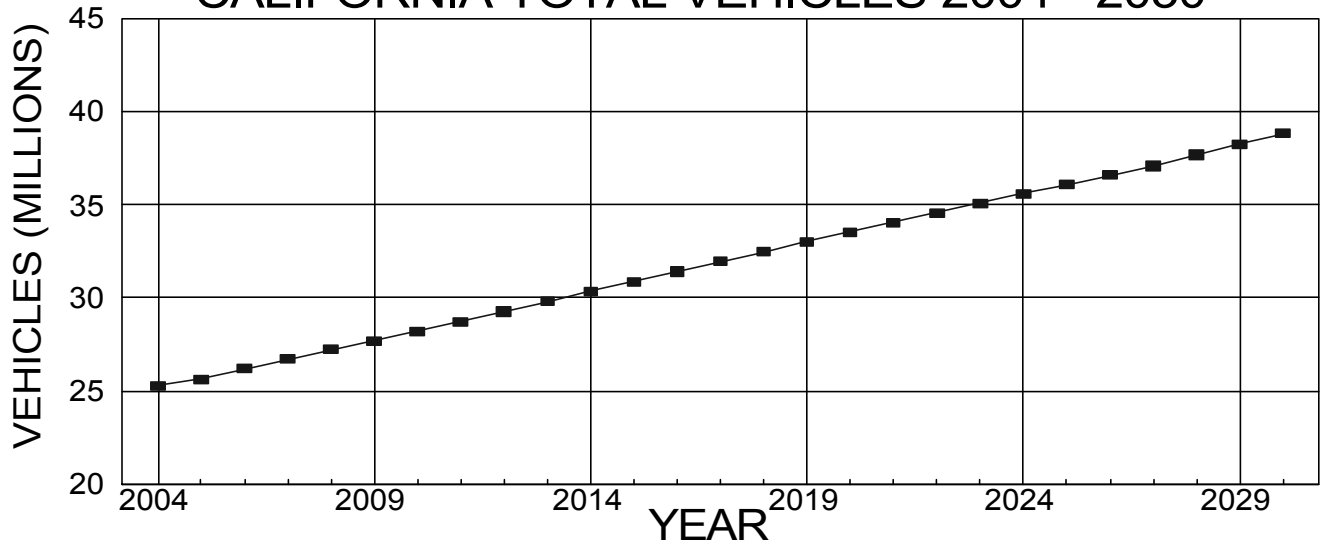
B. NEW VEHICLE FUEL ECONOMY

The MVSTAFF process requires explicit assumptions of the fuel economy of new vehicles entering the fleet each year. The recent update of the Miles Per Gallon (MPG) model, using the 1994 to 2004 Department of Motor Vehicles' vehicle population profile for California and the EPA Gas Mileage Guides, showed that the light duty vehicle fleets (autos and trucks of gross vehicle weight less than 10,000 pounds) meet the national Corporate Average Fuel Economy (CAFE) standards. Because of the fact that the CAFE standard has not been changed, it was assumed the new light duty fleets would continue to have the same fuel economy into the future.

For the medium truck fleets (gross vehicle weight from 10,001 to 33,000 lbs.) and heavy-duty truck fleets (gross vehicle weight greater than 33,000 lbs.), it was reasoned that the manufacturers and buyers are aware of the significance of the fuel operating cost to the trucking industry, and that the long-term outlook is for higher fuel prices. Hence, there will be a continuous need and effort to improve truck fuel economy so that in the long run, fuel-operating costs will not increase beyond current levels. Using the vehicle fuel economy values from the 1977, 1982, 1987, 1992 Truck Inventory and Use Survey (TIUS) reports (Ref. 6) and the 1997, 2002 Vehicle Inventory and Use Survey (VIUS) reports (Ref. 7), an average annual fleet MPG improvement was calculated for each vehicle and fuel type. These rates of improvement were assumed to continue in the future.

Fuel economy of motorcycles was assumed to be a constant on-road value of 50 MPG.

Figure-8
CALIFORNIA TOTAL VEHICLES 2004 - 2030



CALIFORNIA TOTAL VEHICLES 2004-2030

Year	Vehicle	%-CH
2004	25.255	
2005	25.627	1.473
2006	26.169	2.115
2007	26.706	2.052
2008	27.208	1.880
2009	27.689	1.768
2010	28.182	1.780
2011	28.717	1.898
2012	29.262	1.898
2013	29.789	1.801
2014	30.327	1.806
2015	30.861	1.761
2016	31.397	1.737
2017	31.927	1.688
2018	32.450	1.638
2019	32.987	1.655
2020	33.516	1.604
2021	34.024	1.516
2022	34.541	1.520
2023	35.047	1.465
2024	35.562	1.469
2025	36.065	1.414
2026	36.570	1.400
2027	37.079	1.392
2028	37.661	1.570
2029	38.237	1.529
2030	38.805	1.485

Vehicles in Millions

V. FORECAST RESULTS

A. Motor Vehicle Stock

The total vehicle figures used in this report are the average number of currently registered motor vehicles in operation in each calendar year. The estimates of the base year and the forecast years are provided in Figure-8. Values in the figure represent all vehicle body types (autos, trucks, and motorcycles) and fuel types (gasoline and diesel).

Total vehicles are expected to increase by 1.47 percent in 2005. The long-term forecast is for total vehicles to continue to increase at an annual average rate of 1.69 percent for the forecast period.

Total vehicles were stratified into body type, fuel type, and model year categories with the vehicle stock update model. Table-1 gives the forecasted number of vehicles in each body type and fuel type category for the years 2004 to 2018, 2020, 2025, and 2030.

Figure-9 graphically shows the estimates of total gasoline plus diesel vehicles, by body type, for the years 2004 to 2030. The plots correspond to the data given in the upper part of Table-1. Although motorcycles are not shown as a separate entry in the figure, they are included in the "Total" graph.

Table-1: CALIFORNIA TOTAL VEHICLES (MILLIONS)

	CAL. YEAR	BODY TYPE					M.C.	TOTAL
		AUTOS	TRK1	TRK2	TRK3	TRK4		
T O T A L	2004	18.471	2.995	2.619	0.425	0.129	0.617	25.255
	2005	18.738	3.068	2.614	0.446	0.137	0.624	25.627
	2006	19.138	3.138	2.674	0.454	0.139	0.626	26.169
	2007	19.535	3.208	2.734	0.462	0.141	0.626	26.706
	2008	19.907	3.273	2.789	0.469	0.144	0.626	27.208
	2009	20.263	3.335	2.842	0.476	0.146	0.627	27.689
	2010	20.630	3.399	2.896	0.484	0.148	0.626	28.182
	2011	21.028	3.467	2.954	0.492	0.150	0.625	28.717
	2012	21.435	3.537	3.014	0.501	0.153	0.624	29.262
	2013	21.828	3.604	3.071	0.509	0.155	0.623	29.789
	2015	22.628	3.740	3.187	0.526	0.160	0.622	30.861
2020	24.608	4.074	3.472	0.568	0.172	0.621	33.516	
2025	26.512	4.393	3.744	0.610	0.184	0.621	36.065	
2030	28.561	4.735	4.035	0.655	0.198	0.621	38.805	
G A S O L I N E	2004	18.317	2.985	2.351	0.144	0.001	0.617	24.414
	2005	18.598	3.059	2.351	0.150	0.001	0.624	24.782
	2006	19.007	3.130	2.408	0.151	0.001	0.626	25.323
	2007	19.412	3.200	2.465	0.153	0.001	0.626	25.859
	2008	19.792	3.266	2.519	0.155	0.001	0.626	26.360
	2009	20.155	3.328	2.571	0.157	0.001	0.627	26.840
	2010	20.528	3.393	2.624	0.159	0.001	0.626	27.332
	2011	20.933	3.461	2.681	0.162	0.001	0.625	27.863
	2012	21.344	3.532	2.739	0.164	0.001	0.624	28.404
	2013	21.742	3.599	2.794	0.167	0.001	0.623	28.927
	2015	22.550	3.736	2.907	0.173	0.001	0.622	29.988
2020	24.543	4.071	3.180	0.189	0.001	0.621	32.606	
2025	26.452	4.392	3.437	0.204	0.002	0.621	35.108	
2030	28.502	4.734	3.709	0.221	0.002	0.621	37.788	
D I E S E L	2004	0.154	0.010	0.267	0.282	0.128	0.000	0.841
	2005	0.140	0.009	0.264	0.296	0.136	0.000	0.845
	2006	0.131	0.008	0.266	0.302	0.138	0.000	0.845
	2007	0.123	0.008	0.268	0.309	0.140	0.000	0.847
	2008	0.115	0.007	0.269	0.314	0.142	0.000	0.848
	2009	0.108	0.007	0.271	0.319	0.144	0.000	0.849
	2010	0.101	0.006	0.272	0.325	0.146	0.000	0.850
	2011	0.096	0.006	0.273	0.330	0.149	0.000	0.854
	2012	0.090	0.005	0.275	0.336	0.151	0.000	0.858
	2013	0.086	0.005	0.277	0.342	0.154	0.000	0.862
	2015	0.078	0.004	0.280	0.353	0.158	0.000	0.873
2020	0.066	0.003	0.292	0.380	0.171	0.000	0.910	
2025	0.060	0.002	0.306	0.406	0.183	0.000	0.957	
2030	0.059	0.001	0.326	0.435	0.196	0.000	1.017	

Figure-9

CALIFORNIA TOTAL VEHICLES BY BODY TYPE

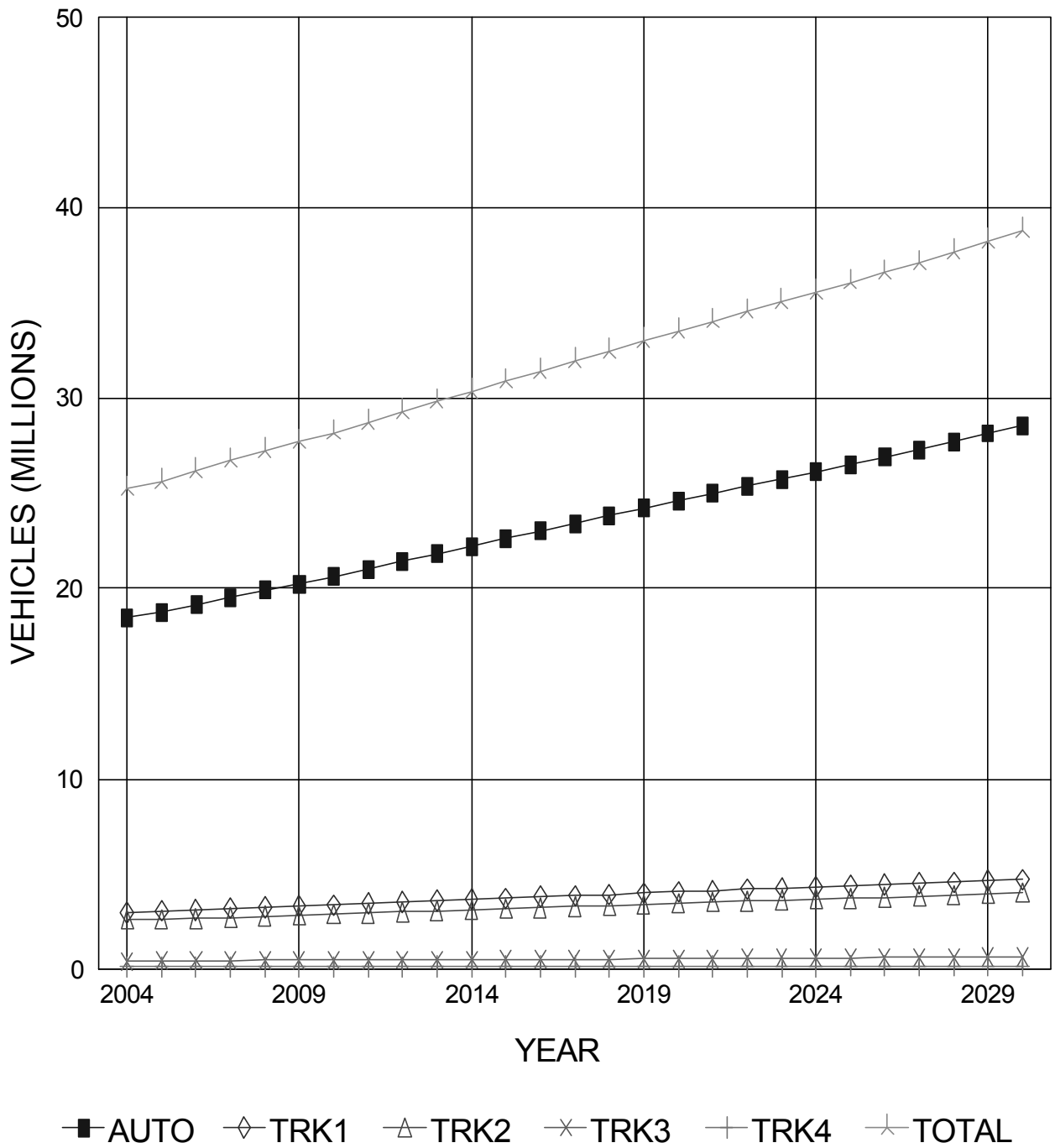
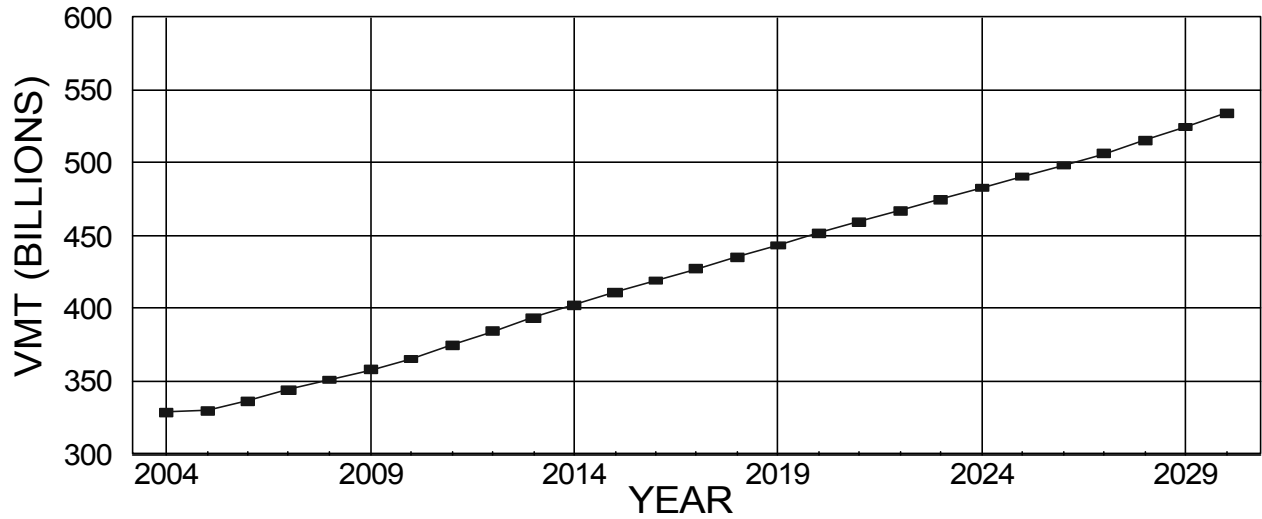


Figure-10

CALIFORNIA TOTAL VEHICLE MILES OF TRAVEL



CALIFORNIA TOTAL VEHICLE MILES OF TRAVEL

Year	VMT	%-CH
2004	328.641	
2005	329.641	0.304
2006	336.479	2.074
2007	343.952	2.221
2008	351.106	2.080
2009	357.982	1.958
2010	365.562	2.117
2011	374.805	2.528
2012	384.453	2.574
2013	393.430	2.335
2014	402.174	2.223
2015	410.961	2.185
2016	419.192	2.003
2017	427.276	1.928
2018	435.293	1.876
2019	443.521	1.890
2020	451.660	1.835
2021	459.425	1.719
2022	467.337	1.722
2023	475.106	1.662
2024	482.995	1.660
2025	490.766	1.609
2026	498.532	1.582
2027	506.428	1.584
2028	515.719	1.835
2029	524.952	1.790
2030	534.100	1.743

VMT in Billion Miles

B. Vehicle Miles of Travel

Statewide total vehicle miles of travel projected by the forecast are given in Figure-10. The values in the figure represent travel by all vehicle body types and fuel types on all public roads.

The 2004 vehicle miles of travel (VMT) estimate of 328.641 is based on the 2004 on-road fuel consumption estimate from the Board of Equalization's sales data, and the 2004 on-road vehicle fleet fuel economy from the MVSTAFF Stratified Rate Model. Annual statewide VMT is expected to increase 0.30 percent in 2005. The long-term forecast is for VMT to continue to grow, but at significantly lower rates than it has in the past. The slow down is predicated on lower statewide population and economic growth. For air quality conformity analysis purposes the annual VMT in five year increments from 1990 are listed in Table-1.1.

Forecasts of statewide total VMT stratified by six body types and two fuel types are given in Table-2. Graphs of VMT by body type are given in Figure-11. The graphs correspond to the data in the upper part of Table-2. Although VMT by motorcycles is not shown as a separate entry in the figure, it is included in the "Total VMT" graph.

Table-1.1

Statewide Total VMT and Five-year Percent Change

YEAR	VMT	%-CH
1990	259.003	
1995	276.968	6.936
2000	306.371	10.616
2005	329.641	7.595
2010	365.562	10.897
2015	410.961	12.419
2020	451.660	9.903
2025	490.766	8.660
2030	534.100	8.830

VMT in Billion Miles

Table-2: CALIFORNIA TOTAL VEHICLE MILES OF TRAVEL (BILLIONS)

CAL.	YEAR	BODY TYPE					M.C.	TOTAL
		AUTOS	TRK1	TRK2	TRK3	TRK4		
T O T A L	2004	235.804	34.807	37.023	11.510	8.141	1.357	328.641
	2005	236.589	34.242	37.275	11.664	8.497	1.373	329.641
	2006	241.535	34.862	37.911	11.968	8.827	1.376	336.479
	2007	247.030	35.611	38.515	12.269	9.149	1.378	343.952
	2008	252.302	36.390	39.058	12.530	9.448	1.378	351.106
	2009	257.383	37.179	39.538	12.769	9.734	1.379	357.982
	2010	262.957	38.092	40.089	13.012	10.033	1.378	365.562
	2011	269.751	39.204	40.821	13.285	10.368	1.375	374.805
	2012	276.729	40.413	41.662	13.561	10.715	1.372	384.453
	2013	283.241	41.525	42.420	13.821	11.053	1.370	393.430
G A S O L I N E	2015	295.972	43.635	43.895	14.364	11.727	1.368	410.961
	2020	325.597	48.239	47.383	15.792	13.283	1.367	451.660
	2025	353.804	52.427	51.291	17.274	14.604	1.367	490.766
	2030	385.163	56.797	55.625	19.067	16.081	1.367	534.100
	2004	234.397	34.785	33.152	1.902	0.012	1.357	305.604
	2005	235.381	34.225	33.471	1.980	0.014	1.373	306.444
D I E S E L	2006	240.432	34.846	34.152	2.072	0.016	1.376	312.895
	2007	246.005	35.597	34.792	2.163	0.018	1.378	319.953
	2008	251.343	36.377	35.371	2.247	0.020	1.378	326.736
	2009	256.479	37.167	35.887	2.327	0.022	1.379	333.261
	2010	262.099	38.081	36.461	2.409	0.024	1.378	340.452
	2011	268.925	39.194	37.194	2.497	0.026	1.375	349.210
	2012	275.929	40.404	38.021	2.584	0.028	1.372	358.337
	2013	282.466	41.516	38.766	2.666	0.029	1.370	366.814
	2015	295.240	43.628	40.208	2.827	0.033	1.368	383.302
	2020	324.917	48.234	43.547	3.191	0.039	1.367	421.295
2025	353.123	52.423	47.177	3.510	0.043	1.367	457.643	
2030	384.446	56.794	51.169	3.887	0.048	1.367	497.710	
D I E S E L	2004	1.406	0.022	3.871	9.608	8.129	0.000	23.036
	2005	1.208	0.017	3.804	9.684	8.483	0.000	23.196
	2006	1.103	0.015	3.758	9.896	8.811	0.000	23.583
	2007	1.025	0.014	3.723	10.106	9.131	0.000	23.999
	2008	0.960	0.013	3.687	10.283	9.428	0.000	24.371
	2009	0.904	0.012	3.651	10.442	9.712	0.000	24.721
	2010	0.858	0.011	3.628	10.603	10.010	0.000	25.110
	2011	0.827	0.010	3.627	10.788	10.342	0.000	25.594
	2012	0.800	0.009	3.642	10.977	10.687	0.000	26.116
	2013	0.775	0.009	3.653	11.156	11.023	0.000	26.616
D I E S E L	2015	0.733	0.007	3.687	11.538	11.694	0.000	27.659
	2020	0.679	0.005	3.835	12.601	13.244	0.000	30.365
	2025	0.680	0.004	4.115	13.764	14.560	0.000	33.123
	2030	0.718	0.003	4.456	15.181	16.033	0.000	36.390

Figure-11

CALIFORNIA VEHICLE MILES OF TRAVEL BY BODY TYPE

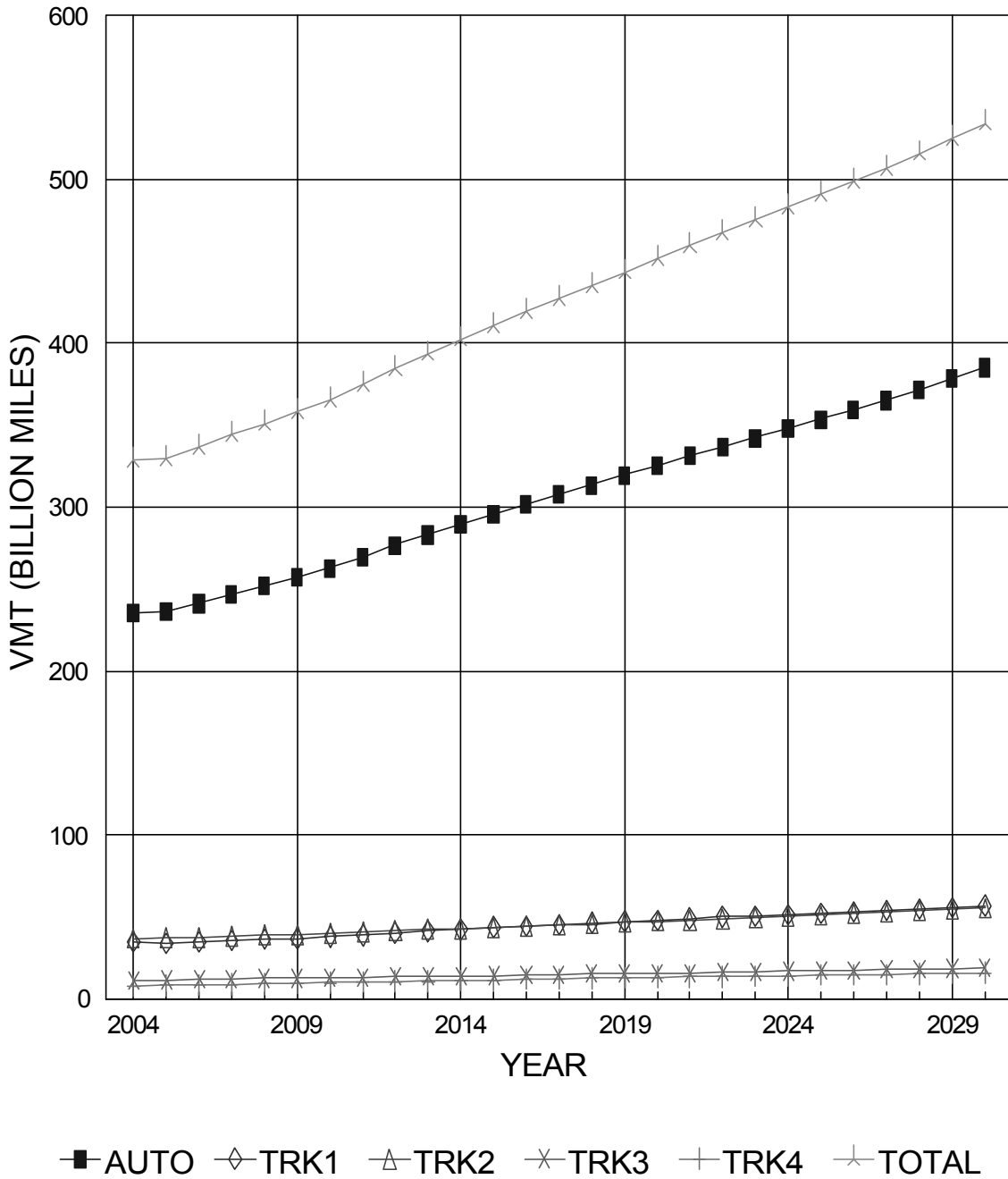
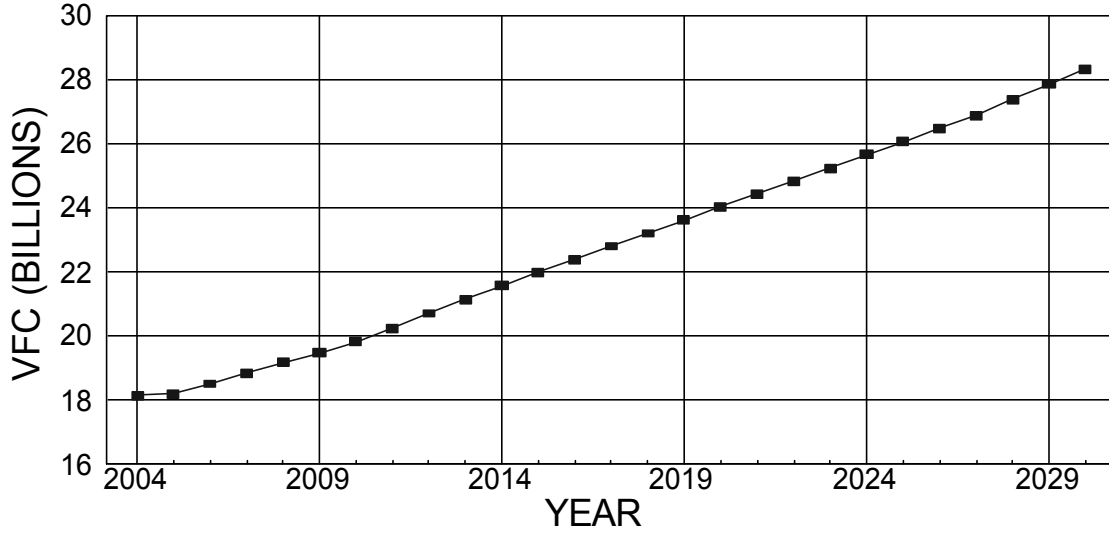


Figure-12
CALIFORNIA TOTAL VEHICLE FUEL CONSUMPTION



CALIFORNIA TOTAL VEHICLE FUEL CONSUMPTION

Year	VFC	%_CH
2004	18.127	
2005	18.182	0.303
2006	18.497	1.732
2007	18.842	1.865
2008	19.162	1.698
2009	19.465	1.581
2010	19.810	1.772
2011	20.243	2.186
2012	20.703	2.272
2013	21.131	2.067
2014	21.557	2.016
2015	21.985	1.985
2016	22.392	1.851
2017	22.803	1.835
2018	23.200	1.741
2019	23.620	1.810
2020	24.034	1.753
2021	24.426	1.631
2022	24.841	1.699
2023	25.238	1.598
2024	25.658	1.664
2025	26.057	1.555
2026	26.468	1.577
2027	26.883	1.568
2028	27.374	1.826
2029	27.862	1.783
2030	28.337	1.705

VFC in Billion Gallons

C. Vehicle Fuel Consumption

Statewide total on-road fuel consumption projected by the forecast is given in Figure-12. The values represent total gasoline and diesel fuel used on all public roads. The base year (2004) values are estimates using Board of Equalization data. Forecasts beyond 2004 use the MVSTAFF process with the 2004 estimate as a base.

On-road fuel consumption is expected to increase 0.30 percent in 2005 (Figure-12). Annual fuel consumption by vehicle type and fuel type for each year of the forecast is given in Table-3. Total fuel consumption is expected to increase for autos and all types of trucks. Diesel fuel consumption for autos and light trucks are decreasing because the numbers of these total vehicles are projected to decrease.

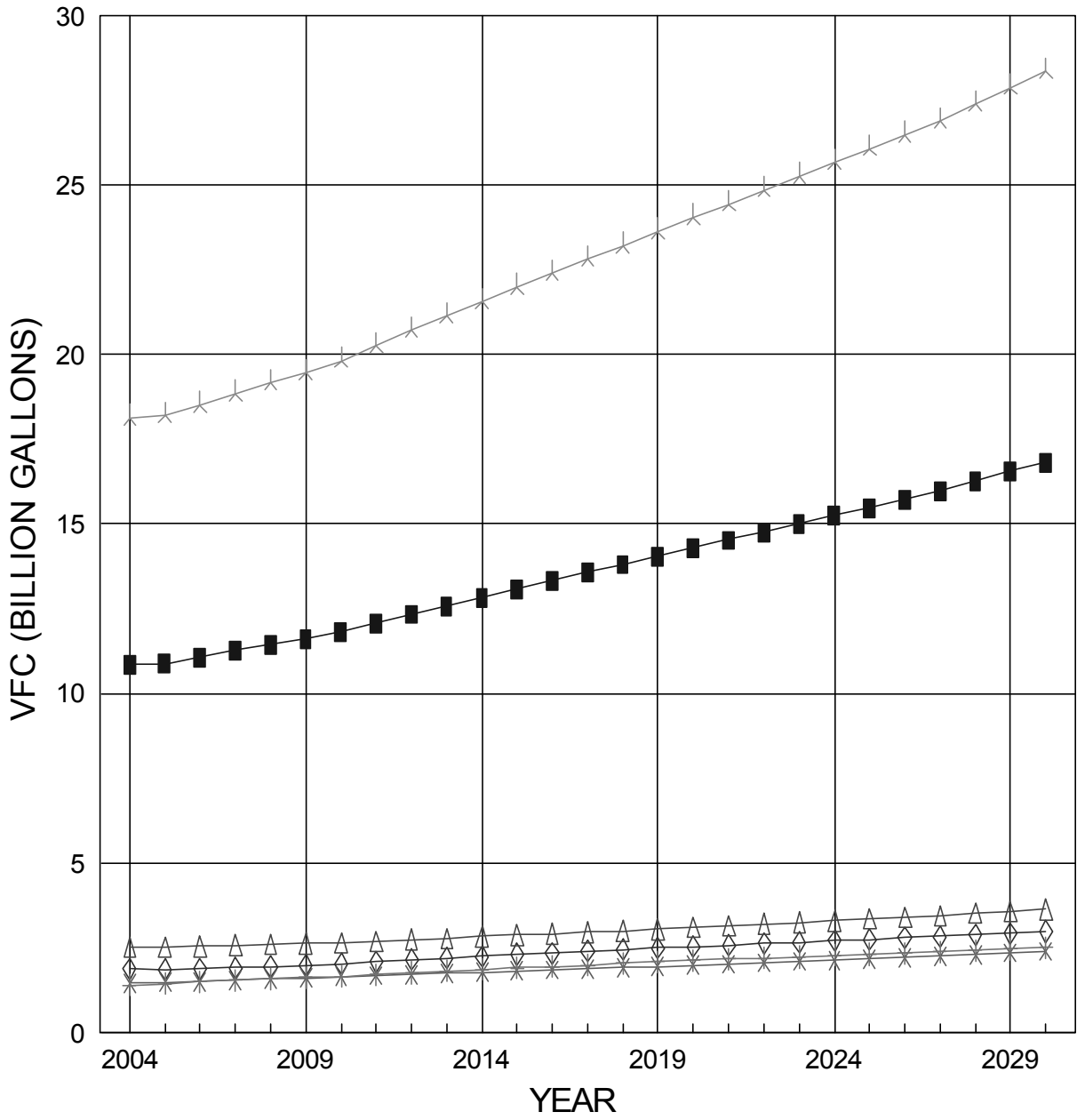
Figure-13 graphs the annual total fuel consumption of the vehicle fleet by body type for years 2004 to 2030. The graphs correspond to the data given in the upper part of Table-3. Although motorcycle fuel consumption is not shown as a separate entry in the figure; it is included in the "Total" graph.

Table3: CALIFORNIA ON-ROAD VEHICLE FUEL CONSUMPTION (BILLIONS)

CAL.	YEAR	BODY TYPE					M.C.	TOTAL
		AUTOS	TRK1	TRK2	TRK3	TRK4		
T O T A L	2004	10.865	1.878	2.521	1.454	1.381	0.027	18.127
	2005	10.883	1.849	2.517	1.471	1.434	0.027	18.182
	2006	11.063	1.877	2.539	1.508	1.483	0.028	18.497
	2007	11.263	1.911	2.567	1.544	1.530	0.028	18.842
	2008	11.448	1.946	2.593	1.575	1.572	0.028	19.162
	2009	11.624	1.982	2.615	1.603	1.613	0.028	19.465
	2010	11.824	2.026	2.644	1.633	1.656	0.028	19.810
	2011	12.078	2.079	2.687	1.666	1.705	0.028	20.243
	2012	12.344	2.139	2.737	1.700	1.754	0.027	20.703
	2013	12.593	2.194	2.782	1.732	1.802	0.027	21.131
2015	13.090	2.299	2.871	1.799	1.899	0.027	21.985	
2020	14.294	2.529	3.089	1.977	2.118	0.027	24.034	
2025	15.481	2.746	3.342	2.161	2.300	0.027	26.057	
2030	16.824	2.973	3.623	2.385	2.505	0.027	28.337	
G A S O I N E	2004	10.814	1.877	2.301	0.262	0.002	0.027	15.285
	2005	10.841	1.848	2.300	0.273	0.002	0.027	15.291
	2006	11.024	1.876	2.325	0.285	0.003	0.028	15.540
	2007	11.227	1.910	2.354	0.297	0.003	0.028	15.819
	2008	11.414	1.945	2.382	0.308	0.003	0.028	16.081
	2009	11.592	1.982	2.407	0.319	0.004	0.028	16.331
	2010	11.794	2.025	2.437	0.330	0.004	0.028	16.617
	2011	12.049	2.079	2.479	0.342	0.004	0.028	16.981
	2012	12.316	2.139	2.529	0.353	0.005	0.027	17.369
	2013	12.566	2.194	2.573	0.364	0.005	0.027	17.730
2015	13.065	2.299	2.660	0.386	0.006	0.027	18.442	
2020	14.270	2.528	2.870	0.435	0.007	0.027	20.137	
2025	15.457	2.746	3.107	0.479	0.007	0.027	21.823	
2030	16.799	2.973	3.368	0.530	0.008	0.027	23.705	
D I E S E L	2004	0.050	0.001	0.220	1.192	1.379	0.000	2.842
	2005	0.043	0.001	0.217	1.199	1.432	0.000	2.891
	2006	0.039	0.001	0.214	1.223	1.480	0.000	2.957
	2007	0.036	0.001	0.212	1.247	1.527	0.000	3.023
	2008	0.034	0.001	0.211	1.267	1.569	0.000	3.081
	2009	0.032	0.001	0.209	1.284	1.610	0.000	3.135
	2010	0.030	0.000	0.207	1.303	1.652	0.000	3.193
	2011	0.029	0.000	0.207	1.325	1.700	0.000	3.262
	2012	0.029	0.000	0.208	1.347	1.750	0.000	3.334
	2013	0.027	0.000	0.209	1.368	1.797	0.000	3.401
2015	0.026	0.000	0.211	1.414	1.893	0.000	3.543	
2020	0.024	0.000	0.219	1.541	2.111	0.000	3.896	
2025	0.024	0.000	0.235	1.682	2.292	0.000	4.234	
2030	0.025	0.000	0.255	1.856	2.497	0.000	4.633	

Figure-13

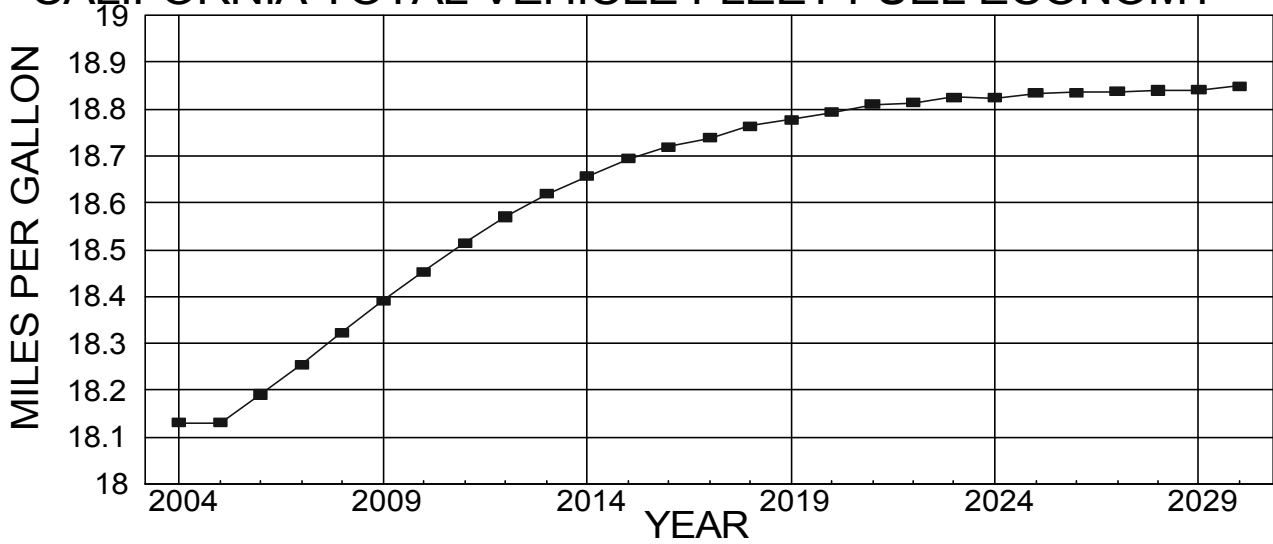
CALIFORNIA VEHICLE FUEL CONSUMPTION BY BODY TYPE



■ AUTO ◇ TRK1 △ TRK2 * TRK3 + TRK4 * TOTAL

Figure-14

CALIFORNIA TOTAL VEHICLE FLEET FUEL ECONOMY



CALIFORNIA TOTAL VEHICLE FLEET FUEL ECONOMY

Year	MPG	%-CH
2004	18.130	
2005	18.130	0.000
2006	18.191	0.336
2007	18.254	0.346
2008	18.323	0.378
2009	18.391	0.371
2010	18.453	0.337
2011	18.515	0.336
2012	18.570	0.297
2013	18.619	0.264
2014	18.657	0.204
2015	18.693	0.193
2016	18.720	0.144
2017	18.738	0.096
2018	18.763	0.133
2019	18.778	0.080
2020	18.793	0.080
2021	18.809	0.085
2022	18.813	0.021
2023	18.825	0.064
2024	18.824	-0.005
2025	18.834	0.053
2026	18.835	0.005
2027	18.838	0.016
2028	18.840	0.011
2029	18.841	0.005
2030	18.848	0.037

MPG: Miles Per Gallon

D. Vehicle Fuel Economy

Forecasts of the total fleet on-road fuel economy are given in Figure-14. The results are a direct output of the Stratified Rate Model, which computes the harmonic average fuel economy by weighting the number of vehicles in each stratum by the annual miles of travel and fuel economy of that stratum.

As can be seen from Figure-14, total fleet fuel economy is expected to improve slightly throughout the forecast period. This is the result of the assumption that the new car fleet fuel economy will remain at 27.5 MPG, replacing the older and lower fuel efficiency vehicles.

Fuel economies of the fleet, stratified by body type and fuel type for each year of the forecast, are given in Table-4. Vehicle fuel economy is projected to continuously improve for all strata of vehicles. The greatest improvements are being projected for heavy trucks. Fuel economy of year 2030 automobile fleet will be slightly (5.48 percent) higher than it was in 2004, while the total vehicle fleet fuel economy will be 3.96 percent higher than it was in 2004.

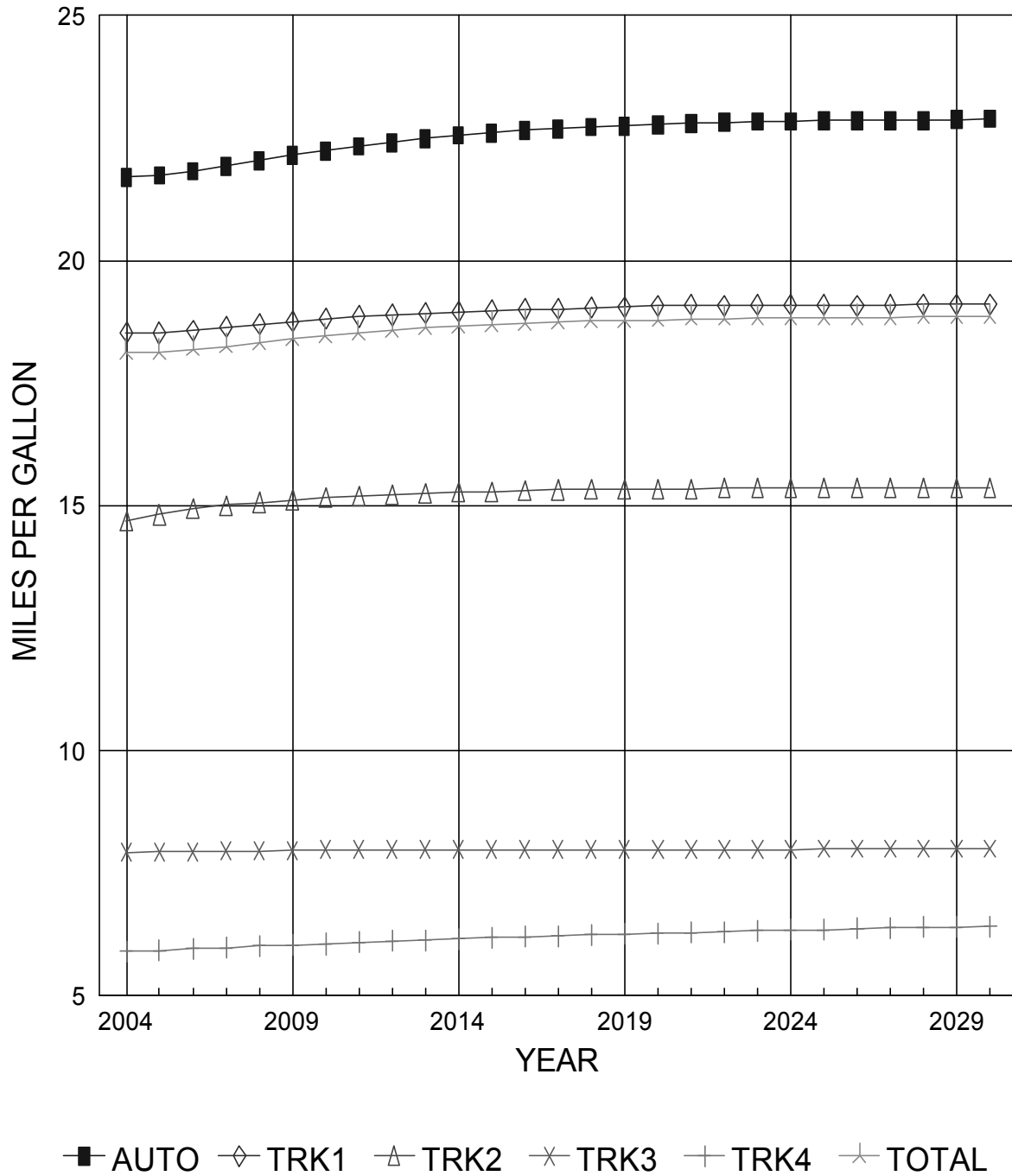
Figure-15 graphs the fuel economy of the vehicle fleet stratified by body type for the years 2004 to 2030. The graphs correspond to the data given in the upper part of Table-4. Although the fuel economy of motorcycles (assumed to be a constant value of 50 MPG) is not shown in the figure, its effect is included in the "Total" graph.

Table-4: CALIFORNIA TOTAL VEHICLE FLEET FUEL ECONOMY

	CAL. YEAR	BODY TYPE					M.C.	TOTAL
		AUTOS	TRK1	TRK2	TRK3	TRK4		
	2004	21.703	18.531	14.683	7.914	5.894	50.000	18.130
	2005	21.739	18.520	14.812	7.928	5.924	50.000	18.130
	2006	21.833	18.573	14.931	7.937	5.954	50.000	18.191
	2007	21.932	18.639	15.006	7.947	5.979	50.000	18.254
T	2008	22.039	18.702	15.063	7.956	6.008	50.000	18.323
O	2009	22.143	18.757	15.117	7.966	6.033	50.000	18.391
T	2010	22.240	18.805	15.160	7.970	6.058	50.000	18.453
A	2011	22.334	18.853	15.194	7.972	6.083	50.000	18.515
L	2012	22.418	18.891	15.222	7.976	6.107	50.000	18.570
	2013	22.492	18.922	15.248	7.980	6.132	50.000	18.619
	2015	22.610	18.981	15.290	7.983	6.177	50.000	18.693
	2020	22.779	19.077	15.339	7.990	6.271	50.000	18.793
	2025	22.854	19.091	15.349	7.993	6.350	50.000	18.834
	2030	22.893	19.106	15.354	7.994	6.419	50.000	18.848
	2004	21.674	18.529	14.405	7.247	5.759	50.000	19.994
	2005	21.713	18.518	14.555	7.259	5.768	50.000	20.041
	2006	21.811	18.571	14.691	7.271	5.776	50.000	20.135
	2007	21.912	18.637	14.779	7.284	5.786	50.000	20.226
G	2008	22.020	18.701	14.847	7.290	5.795	50.000	20.318
A	2009	22.126	18.755	14.910	7.302	5.800	50.000	20.407
S	2010	22.224	18.804	14.960	7.308	5.804	50.000	20.488
O	2011	22.320	18.852	15.001	7.308	5.814	50.000	20.565
L	2012	22.405	18.890	15.034	7.314	5.818	50.000	20.631
I	2013	22.479	18.922	15.065	7.320	5.823	50.000	20.689
N	2015	22.598	18.980	15.115	7.327	5.827	50.000	20.784
E	2020	22.769	19.077	15.174	7.333	5.836	50.000	20.921
	2025	22.846	19.090	15.186	7.333	5.846	50.000	20.971
	2030	22.885	19.106	15.192	7.339	5.845	50.000	20.996
	2004	27.914	23.625	17.595	8.061	5.894	0.000	8.105
	2005	28.205	23.575	17.545	8.080	5.924	0.000	8.024
	2006	28.249	26.614	17.530	8.092	5.954	0.000	7.976
	2007	28.313	23.988	17.520	8.105	5.979	0.000	7.938
D	2008	28.364	23.984	17.513	8.118	6.009	0.000	7.911
I	2009	28.598	24.014	17.511	8.131	6.034	0.000	7.887
E	2010	28.616	24.009	17.509	8.137	6.058	0.000	7.864
S	2011	28.105	24.012	17.506	8.143	6.083	0.000	7.846
E	2012	27.955	23.980	17.505	8.150	6.108	0.000	7.834
L	2013	28.635	23.989	17.505	8.156	6.133	0.000	7.825
	2015	28.481	23.974	17.504	8.162	6.178	0.000	7.806
	2020	28.354	24.028	17.499	8.175	6.272	0.000	7.793
	2025	28.320	23.970	17.500	8.181	6.352	0.000	7.823
	2030	28.320	23.918	17.500	8.181	6.421	0.000	7.855

Figure-15

CALIFORNIA VEHICLE FLEET FUEL ECONOMY BY BODY TYPE



REFERENCES

1. UCLA, "The UCLA Anderson Forecast for the Nation and California," September 2005.
2. The DRI-WEFA Group, "U.S. Economy, The 25-Year Focus," Spring Issue, 2004.
3. State of California, Department of Finance, California County Population Estimates and Components of Change by Year, July 1, 2000 – 2004, Sacramento, California, February 2005.
4. State of California, Department of Finance, Population Projections by Race/Ethnicity for California and Its Counties 2000-2050, Sacramento, California, May 2004.
5. R. L. Polk, "Annual National Vehicle Population Profile, California," 1983, 1984, 1986, 1988, 1990, 1992.
6. U.S. Department of Commerce, Bureau of the Census, "Truck Inventory and Use Survey," 1977, 1982, 1987 and 1992.
7. U.S. Department of Commerce, Bureau of the Census, "Vehicle Inventory and Use Survey," 1997 and 2002.

APPENDIX A

Vehicle Body Type Definitions:

The motor vehicle fleet is stratified into six classes by body type, one class of autos, four classes of trucks by gross vehicle weight, and one class of motorcycles. These are defined as follows:

- AUTOS AUTOS include all passenger vehicles registered as regular autos and station wagons.
- TRK1 TRK1 includes all Truck Gross Vehicle Weight Class 1 trucks (GVW 0 to 6,000 lbs.)
- TRK2 TRK2 includes all Truck Gross Vehicle Weight Class 2 trucks (GVW 6,001 to 10,000 lbs.)
- TRK3 TRK3 includes trucks of Truck Gross Vehicle Weight Class 3 (GVW 10,001 to 14,000 lbs.), 4 (GVW 14,001 to 16,000 lbs.), 5 (GVW 16,001 to 19,500 lbs.), 6 (GVW 19,501 to 26,000 lbs.), and 7 (GVW 26,001 to 33,000 lbs.)
- TRK4 TRK4 includes all trucks of Truck Gross Vehicle Weight Class 8 and above (GVW 33,001+ lbs.)
- MC MC includes all registered motorcycles which excludes motor-bicycles and off-road motor-powered dirt bikes.

APPENDIX B

**CALIFORNIA VEHICLE MILES OF TRAVEL BY COUNTY
AND
ROAD SYSTEM**

1990 ANNUAL STATEWIDE VMT DISTRIBUTION BY COUNTY (MILLIONS)

COUNTY	SHS	OTHER	TOTAL
ALAMEDA	7152.000	4279.340	11431.340
ALPINE	41.000	7.262	48.262
AMADOR	223.000	61.620	284.620
BUTTE	540.000	915.457	1455.457
CALAVERAS	215.000	89.559	304.559
COLUSA	347.000	102.236	449.236
CONTRA COSTA	3445.000	3246.368	6691.368
DEL NORTE	150.000	61.124	211.124
EL DORADO	757.000	474.890	1231.890
FRESNO	2066.000	3172.677	5238.677
GLENN	290.000	91.583	381.583
HUMBOLDT	661.000	408.296	1069.296
IMPERIAL	800.000	452.897	1252.897
INYO	382.000	65.501	447.501
KERN	3275.000	2022.720	5297.720
KINGS	489.000	417.384	906.384
LAKE	256.000	120.888	376.888
LASSEN	265.000	200.682	465.682
LOS ANGELES	34243.000	37622.039	71865.040
MADERA	655.000	281.274	936.274
MARIN	1409.000	1082.729	2491.729
MARIPOSA	105.000	103.366	208.366
MENDOCINO	619.000	346.644	965.644
MERCED	1289.000	470.881	1759.881
MODOC	83.000	60.075	143.075
MONO	276.000	24.399	300.399
MONTEREY	1710.000	1372.504	3082.504
NAPA	531.000	356.069	887.069
NEVADA	565.000	308.774	873.774
ORANGE	11304.000	11466.120	22770.120
PLACER	1295.000	702.972	1997.972
PLUMAS	160.000	99.828	259.828
RIVERSIDE	7170.000	4289.729	11459.730
SACRAMENTO	3771.000	5032.580	8803.580
SAN BENITO	255.000	93.997	348.997
SAN BERNARDINO	8593.000	4624.414	13217.410
SAN DIEGO	12088.000	9415.592	21503.590
SAN FRANCISCO	1441.000	2191.836	3632.836
SAN JOAQUIN	2415.000	1931.905	4346.905
SAN LUIS OBISPO	1482.000	698.928	2180.928
SAN MATEO	4212.000	2003.598	6215.598
SANTA BARBARA	1963.000	1055.183	3018.183
SANTA CLARA	5915.000	7116.808	13031.810
SANTA CRUZ	892.000	846.475	1738.475
SHASTA	973.000	614.108	1587.108
SIERRA	60.000	29.915	89.915
SISKIYOU	570.000	199.754	769.754
SOLANO	2381.000	970.847	3351.847
SONOMA	1605.000	1425.999	3030.999
STANISLAUS	1268.000	1509.908	2777.908
SUTTER	320.000	275.183	595.183
TEHAMA	516.000	215.304	731.304
TRINITY	117.000	25.272	142.272
TULARE	1173.000	1300.106	2473.106
TUOLUMNE	291.000	190.485	481.485
VENTURA	2931.000	2464.488	5395.488
YOLO	979.000	533.314	1512.314
YUBA	230.000	250.136	480.136
TOTAL	139209.000	119794.000	259003.000

1995 ANNUAL STATEWIDE VMT DISTRIBUTION BY COUNTY (MILLIONS)

COUNTY	SHS	OTHER	TOTAL
ALAMEDA	7446.094	4978.716	12424.810
ALPINE	42.031	8.258	50.288
AMADOR	245.670	84.153	329.823
BUTTE	607.915	981.743	1589.659
CALAVERAS	250.213	115.479	365.692
COLUSA	392.990	109.167	502.157
CONTRA COSTA	3643.810	3466.372	7110.182
DEL NORTE	157.375	67.824	225.199
EL DORADO	802.615	660.853	1463.468
FRESNO	2349.317	3697.812	6047.128
GLENN	322.618	120.538	443.156
HUMBOLDT	686.710	442.605	1129.314
IMPERIAL	880.310	502.488	1382.798
INYO	373.176	72.673	445.849
KERN	3692.823	2365.436	6058.259
KINGS	517.071	450.224	967.295
LAKE	298.372	159.667	458.039
LASSEN	313.735	243.389	557.124
LOS ANGELES	35077.895	38915.496	73993.391
MADERA	778.416	345.037	1123.453
MARIN	1433.790	1123.358	2557.148
MARISPOSA	125.356	114.461	239.817
MENDOCINO	646.967	419.624	1066.591
MERCED	1349.182	740.422	2089.604
MODOC	92.546	68.090	160.636
MONO	251.333	26.732	278.064
MONTEREY	1803.910	1421.387	3225.297
NAPA	536.263	373.575	909.837
NEVADA	634.526	344.081	978.607
ORANGE	11224.334	11905.607	23129.941
PLACER	1489.990	1039.482	2529.472
PLUMAS	180.789	109.287	290.076
RIVERSIDE	7380.951	4928.492	12309.442
SACRAMENTO	4193.164	5100.004	9293.169
SAN BENITO	285.832	119.000	404.832
SAN BERNARDINO	9716.704	5973.938	15690.642
SAN DIEGO	12603.485	10450.808	23054.293
SAN FRANCISCO	1503.313	2221.684	3724.997
SAN JOAQUIN	2818.117	2100.808	4918.925
SAN LUIS OBISPO	1557.005	767.077	2324.082
SAN MATEO	4271.216	2162.862	6434.078
SANTA BARBARA	2016.736	1165.377	3182.114
SANTA CLARA	6202.178	7372.168	13574.347
SANTA CRUZ	964.584	901.866	1866.449
SHASTA	1076.579	674.745	1751.324
SIERRA	57.836	28.706	86.542
SISKIYOU	579.600	279.885	859.485
SOLANO	2612.947	1109.651	3722.597
SONOMA	1752.949	1604.533	3357.483
STANISLAUS	1373.184	2049.389	3422.573
SUTTER	370.762	303.935	674.697
TEHAMA	553.252	235.268	788.520
TRINITY	113.962	31.776	145.738
TULARE	1341.240	1462.093	2803.333
TUOLUMNE	293.840	210.761	504.601
VENTURA	3117.036	2664.815	5781.852
YOLO	1063.659	563.462	1627.121
YUBA	246.729	295.853	542.581
TOTAL	146715.016	130252.969	276968.000

2000 ANNUAL STATEWIDE VMT DISTRIBUTION BY COUNTY (MILLIONS)

COUNTY	SHS	OTHER	TOTAL
ALAMEDA	8532.969	5493.258	14026.227
ALPINE	44.501	12.415	56.916
AMADOR	261.405	106.558	367.963
BUTTE	642.613	1357.711	2000.324
CALAVERAS	243.504	142.448	385.952
COLUSA	406.608	116.190	522.798
CONTRA COSTA	4220.383	3731.079	7951.462
DEL NORTE	153.903	87.401	241.304
EL DORADO	845.416	772.738	1618.154
FRESNO	2709.153	4116.970	6826.123
GLENN	308.507	130.725	439.231
HUMBOLDT	702.814	509.308	1212.122
IMPERIAL	1105.722	537.656	1643.377
INYO	404.908	115.702	520.609
KERN	4192.583	2823.800	7016.383
KINGS	649.413	459.336	1108.749
LAKE	308.406	184.271	492.677
LASSEN	295.605	284.158	579.764
LOS ANGELES	37403.344	41684.074	79087.418
MADERA	899.117	421.758	1320.876
MARIN	1552.530	1225.938	2778.469
MARIPOSA	122.002	139.324	261.326
MENDOCINO	689.414	449.632	1139.046
MERCED	1485.529	729.629	2215.158
MODOC	80.501	108.529	189.030
MONO	237.404	56.436	293.840
MONTEREY	2038.840	1544.548	3583.388
NAPA	675.513	473.885	1149.399
NEVADA	699.614	385.486	1085.100
ORANGE	12808.053	13008.400	25816.453
PLACER	1721.234	1188.512	2909.746
PLUMAS	176.203	178.069	354.272
RIVERSIDE	8394.666	5709.839	14104.505
SACRAMENTO	4959.698	5443.629	10403.327
SAN BENITO	347.107	185.868	532.974
SAN BERNARDINO	10485.908	6687.920	17173.828
SAN DIEGO	14770.092	11364.967	26135.058
SAN FRANCISCO	1562.730	2288.854	3851.584
SAN JOAQUIN	3116.562	2354.441	5471.002
SAN LUIS OBISPO	1734.235	896.256	2630.490
SAN MATEO	4910.597	2475.690	7386.287
SANTA BARBARA	2221.044	1345.261	3566.305
SANTA CLARA	7670.652	7736.795	15407.447
SANTA CRUZ	1011.820	1025.191	2037.011
SHASTA	1070.022	829.130	1899.152
SIERRA	65.801	44.724	110.525
SISKIYOU	579.412	301.579	880.991
SOLANO	2929.859	1337.424	4267.283
SONOMA	1898.838	1764.106	3662.944
STANISLAUS	1389.727	1995.865	3385.592
SUTTER	393.708	350.794	744.501
TEHAMA	560.411	273.792	834.203
TRINITY	110.602	72.922	183.525
TULARE	1510.930	1566.262	3077.192
TUOLUMNE	300.706	266.179	566.886
VENTURA	3482.669	2939.111	6421.780
YOLO	1182.924	657.314	1840.238
YUBA	278.605	324.130	602.736
TOTAL	163557.000	142814.000	306371.000

2004 ANNUAL STATEWIDE VMT DISTRIBUTION BY COUNTY (MILLIONS)

COUNTY	SHS	OTHER	TOTAL
ALAMEDA	8745.204	5701.647	14446.852
ALPINE	48.100	12.913	61.013
AMADOR	305.900	108.145	414.045
BUTTE	692.800	1102.677	1795.477
CALAVERAS	281.300	145.191	426.491
COLUSA	485.500	118.525	604.025
CONTRA COSTA	4727.302	3913.391	8640.693
DEL NORTE	141.600	89.180	230.780
EL DORADO	880.500	783.400	1663.900
FRESNO	3349.402	4303.136	7652.537
GLENN	362.900	144.208	507.108
HUMBOLDT	725.800	517.515	1243.316
IMPERIAL	1222.101	567.255	1789.356
INYO	404.400	111.682	516.082
KERN	4748.402	3129.627	7878.029
KINGS	781.500	539.235	1320.736
LAKE	336.800	199.242	536.042
LASSEN	297.700	294.104	591.804
LOS ANGELES	40065.219	42626.078	82691.297
MADERA	1050.700	441.666	1492.367
MARIN	1582.601	1259.713	2842.313
MARIPOSA	130.700	141.513	272.213
MENDOCINO	714.700	464.084	1178.785
MERCED	1750.201	784.591	2534.792
MODOC	83.000	103.724	186.724
MONO	248.300	53.362	301.662
MONTEREY	2140.601	1590.685	3731.286
NAPA	697.800	458.824	1156.625
NEVADA	669.300	418.488	1087.789
ORANGE	14096.407	13046.248	27142.656
PLACER	1858.501	1582.677	3441.178
PLUMAS	175.900	177.198	353.098
RIVERSIDE	10807.205	6535.147	17342.352
SACRAMENTO	5465.802	6206.255	11672.057
SAN BENITO	329.100	170.137	499.237
SAN BERNARDINO	12309.406	7327.349	19636.755
SAN DIEGO	16492.508	12060.873	28553.381
SAN FRANCISCO	1306.001	2336.939	3642.940
SAN JOAQUIN	3981.302	2454.608	6435.910
SAN LUIS OBISPO	1867.801	1001.457	2869.258
SAN MATEO	4743.402	2437.042	7180.444
SANTA BARBARA	2326.101	1321.883	3647.984
SANTA CLARA	7883.004	7403.348	15286.351
SANTA CRUZ	1051.100	1042.248	2093.348
SHASTA	1164.201	846.241	2010.442
SIERRA	63.400	44.538	107.938
SISKIYOU	591.900	298.653	890.554
SOLANO	3282.901	1433.675	4716.576
SONOMA	2102.801	1797.234	3900.035
STANISLAUS	1865.701	2131.723	3997.424
SUTTER	466.100	339.139	805.239
TEHAMA	630.200	278.501	908.701
TRINITY	121.300	63.713	185.013
TULARE	1774.301	1640.006	3414.307
TUOLUMNE	335.900	268.643	604.543
VENTURA	3756.502	3111.195	6867.697
YOLO	1304.901	685.827	1990.728
YUBA	329.100	321.546	650.646
TOTAL	180153.078	148487.844	328640.922

2005 ANNUAL STATEWIDE VMT DISTRIBUTION BY COUNTY (MILLIONS)

COUNTY	SHS	OTHER	TOTAL
ALAMEDA	8780.583	5729.410	14509.992
ALPINE	47.899	12.870	60.769
AMADOR	305.540	108.106	413.646
BUTTE	694.628	1106.494	1801.123
CALAVERAS	284.178	146.797	430.975
COLUSA	488.394	119.329	607.723
CONTRA COSTA	4766.945	3949.446	8716.391
DEL NORTE	141.122	88.952	230.073
EL DORADO	886.370	789.270	1675.641
FRESNO	3374.148	4338.484	7712.631
GLENN	363.004	144.367	507.371
HUMBOLDT	722.553	515.622	1238.175
IMPERIAL	1234.803	573.621	1808.424
INYO	400.976	110.827	511.803
KERN	4785.723	3156.813	7942.536
KINGS	788.783	544.707	1333.490
LAKE	338.754	200.563	539.317
LASSEN	296.372	293.032	589.404
LOS ANGELES	39908.844	42494.539	82403.383
MADERA	1061.056	446.385	1507.441
MARIN	1569.780	1250.533	2820.313
MARIPOSA	130.840	141.781	272.621
MENDOCINO	713.803	463.882	1177.685
MERCED	1778.208	797.800	2576.008
MODOC	82.028	102.594	184.622
MONO	248.801	53.513	302.314
MONTEREY	2146.266	1596.203	3742.469
NAPA	702.134	462.052	1164.186
NEVADA	672.729	420.977	1093.706
ORANGE	14088.285	13049.426	27137.711
PLACER	1886.296	1607.664	3493.960
PLUMAS	174.281	175.711	349.992
RIVERSIDE	10950.920	6627.483	17578.404
SACRAMENTO	5533.844	6288.669	11822.513
SAN BENITO	331.510	171.524	503.034
SAN BERNARDINO	12384.372	7378.021	19762.393
SAN DIEGO	16541.148	12106.367	28647.516
SAN FRANCISCO	1296.034	2321.008	3617.042
SAN JOAQUIN	4049.764	2498.865	6548.630
SAN LUIS OBISPO	1870.757	1003.864	2874.621
SAN MATEO	4729.077	2431.675	7160.752
SANTA BARBARA	2318.447	1318.614	3637.061
SANTA CLARA	7885.165	7411.452	15296.617
SANTA CRUZ	1048.068	1040.094	2088.162
SHASTA	1172.499	852.972	2025.472
SIERRA	63.231	44.456	107.686
SISKIYOU	587.334	296.592	883.926
SOLANO	3318.313	1450.328	4768.641
SONOMA	2119.349	1812.863	3932.211
STANISLAUS	1879.922	2149.733	4029.655
SUTTER	469.076	341.585	810.661
TEHAMA	630.551	278.885	909.436
TRINITY	120.182	63.178	183.360
TULARE	1792.978	1658.629	3451.606
TUOLUMNE	335.702	268.705	604.407
VENTURA	3755.208	3112.675	6867.883
YOLO	1322.102	695.438	2017.540
YUBA	331.657	324.310	655.967
TOTAL	180701.344	148939.750	329641.156

2010 ANNUAL STATEWIDE VMT DISTRIBUTION BY COUNTY (MILLIONS)

COUNTY	SHS	OTHER	TOTAL
ALAMEDA	9780.208	6407.966	16188.174
ALPINE	51.206	13.815	65.020
AMADOR	331.564	117.798	449.362
BUTTE	768.305	1228.898	1997.203
CALAVERAS	326.404	169.304	495.707
COLUSA	549.202	134.739	683.941
CONTRA COSTA	5425.398	4513.498	9938.896
DEL NORTE	151.461	95.862	247.323
EL DORADO	1000.236	894.332	1894.568
FRESNO	3821.251	4933.613	8754.863
GLENN	396.815	158.465	555.280
HUMBOLDT	771.242	552.635	1323.877
IMPERIAL	1419.412	662.097	2081.509
INYO	419.482	116.420	535.901
KERN	5432.575	3598.260	9030.835
KINGS	901.901	625.388	1527.289
LAKE	380.633	226.286	606.918
LASSEN	316.363	314.086	630.449
LOS ANGELES	42720.363	45675.629	88395.992
MADERA	1216.448	513.867	1730.314
MARIN	1645.255	1316.058	2961.313
MARIPOSA	143.589	156.237	299.826
MENDOCINO	774.301	505.271	1279.572
MERCED	2101.423	946.696	3048.119
MODOC	84.421	106.021	190.441
MONO	274.336	59.249	333.584
MONTEREY	2373.997	1772.843	4146.840
NAPA	790.537	522.371	1312.908
NEVADA	753.345	473.367	1226.711
ORANGE	15334.303	14262.081	29596.385
PLACER	2217.698	1897.901	4115.599
PLUMAS	181.648	183.893	365.542
RIVERSIDE	12770.098	7760.289	20530.387
SACRAMENTO	6426.130	7332.751	13758.881
SAN BENITO	375.320	194.991	570.311
SAN BERNARDINO	13935.292	8336.188	22271.480
SAN DIEGO	18323.908	13466.411	31790.320
SAN FRANCISCO	1361.568	2448.415	3809.983
SAN JOAQUIN	4814.049	2982.698	7796.747
SAN LUIS OBISPO	2058.297	1109.051	3167.348
SAN MATEO	5084.712	2625.313	7710.025
SANTA BARBARA	2489.414	1421.685	3911.099
SANTA CLARA	8619.130	8134.700	16753.830
SANTA CRUZ	1127.648	1123.679	2251.327
SHASTA	1326.152	968.727	2294.879
SIERRA	68.106	48.081	116.187
SISKIYOU	616.775	312.742	929.517
SOLANO	3821.841	1677.286	5499.127
SONOMA	2405.919	2066.470	4472.389
STANISLAUS	2131.504	2447.465	4578.969
SUTTER	528.595	386.513	915.108
TEHAMA	690.220	306.533	996.753
TRINITY	125.256	66.116	191.372
TULARE	2062.389	1915.713	3978.103
TUOLUMNE	365.370	293.656	659.026
VENTURA	4092.073	3405.875	7497.949
YOLO	1540.847	813.839	2354.686
YUBA	376.317	369.497	745.814
TOTAL	200392.266	165169.641	365561.844

2015 ANNUAL STATEWIDE VMT DISTRIBUTION BY COUNTY (MILLIONS)

COUNTY	SHS	OTHER	TOTAL
ALAMEDA	11031.888	7257.969	18289.857
ALPINE	55.434	15.017	70.452
AMADOR	364.372	129.989	494.361
BUTTE	860.581	1382.188	2242.770
CALAVERAS	379.661	197.743	577.404
COLUSA	625.419	154.073	779.492
CONTRA COSTA	6253.168	5223.660	11476.828
DEL NORTE	164.622	104.623	269.244
EL DORADO	1143.055	1026.257	2169.311
FRESNO	4382.521	5681.680	10064.201
GLENN	439.281	176.149	615.430
HUMBOLDT	833.659	599.832	1433.491
IMPERIAL	1652.328	773.931	2426.259
INYO	444.410	123.849	568.259
KERN	6245.122	4153.564	10398.687
KINGS	1044.328	727.145	1771.472
LAKE	433.117	258.552	691.669
LASSEN	341.988	340.932	682.920
LOS ANGELES	46310.320	49718.785	96029.102
MADERA	1412.296	599.068	2011.364
MARIN	1746.243	1402.619	3148.862
MARIPOSA	159.580	174.355	333.935
MENDOCINO	850.586	557.347	1407.933
MERCED	2514.904	1137.658	3652.562
MODOC	87.985	110.955	198.940
MONO	306.330	66.432	372.763
MONTEREY	2659.217	1994.055	4653.272
NAPA	901.366	598.069	1499.436
NEVADA	854.328	539.041	1393.368
ORANGE	16902.346	15785.525	32687.871
PLACER	2640.414	2269.010	4909.424
PLUMAS	191.730	194.902	386.632
RIVERSIDE	15080.472	9202.201	24282.672
SACRAMENTO	7556.995	8658.842	16215.837
SAN BENITO	430.312	224.486	654.798
SAN BERNARDINO	15879.438	9538.494	25417.932
SAN DIEGO	20556.426	15169.614	35726.039
SAN FRANCISCO	1448.569	2615.640	4064.209
SAN JOAQUIN	5795.197	3605.455	9400.652
SAN LUIS OBISPO	2293.380	1240.831	3534.211
SAN MATEO	5536.475	2870.393	8406.867
SANTA BARBARA	2706.914	1552.293	4259.207
SANTA CLARA	9540.982	9041.999	18582.980
SANTA CRUZ	1228.668	1229.409	2458.077
SHASTA	1518.977	1114.172	2633.149
SIERRA	74.288	52.662	126.950
SISKIYOU	655.911	333.963	989.874
SOLANO	4457.639	1964.412	6422.051
SONOMA	2765.900	2385.492	5151.392
STANISLAUS	2447.425	2821.844	5269.270
SUTTER	603.226	442.908	1046.135
TEHAMA	765.124	341.205	1106.328
TRINITY	132.201	70.071	202.271
TULARE	2402.389	2240.766	4643.155
TUOLUMNE	402.706	325.004	727.709
VENTURA	4515.750	3774.056	8289.806
YOLO	1818.575	964.502	2783.076
YUBA	432.410	426.330	858.741
TOTAL	225278.922	185681.984	410961.031

2020 ANNUAL STATEWIDE VMT DISTRIBUTION BY COUNTY (MILLIONS)

COUNTY	SHS	OTHER	TOTAL
ALAMEDA	12152.762	8028.589	20181.350
ALPINE	58.609	15.943	74.553
AMADOR	391.061	140.090	531.151
BUTTE	941.398	1518.266	2459.664
CALAVERAS	431.281	225.561	656.842
COLUSA	695.559	172.063	867.622
CONTRA COSTA	7038.693	5904.265	12942.957
DEL NORTE	174.741	111.515	286.256
EL DORADO	1275.718	1150.119	2425.837
FRESNO	4908.694	6390.247	11298.940
GLENN	474.920	191.230	666.150
HUMBOLDT	880.055	635.843	1515.898
IMPERIAL	1878.483	883.512	2761.995
INYO	459.811	128.672	588.483
KERN	7011.315	4682.508	11693.823
KINGS	1180.968	825.698	2006.666
LAKE	481.312	288.516	769.828
LASSEN	361.044	361.423	722.466
LOS ANGELES	49027.980	52854.953	101882.938
MADERA	1601.332	682.072	2283.404
MARIN	1810.088	1459.935	3270.023
MARIPOSA	173.205	190.027	363.231
MENDOCINO	912.536	600.422	1512.958
MERCED	2939.359	1335.186	4274.546
MODOC	89.556	113.404	202.960
MONO	334.057	72.746	406.803
MONTEREY	2909.047	2190.449	5099.496
NAPA	1003.700	668.734	1672.434
NEVADA	946.190	599.480	1545.670
ORANGE	18195.055	17063.354	35258.410
PLACER	3070.189	2649.283	5719.472
PLUMAS	197.638	201.742	399.380
RIVERSIDE	17392.379	10656.995	28049.373
SACRAMENTO	8679.051	9985.775	18664.826
SAN BENITO	481.824	252.402	734.226
SAN BERNARDINO	17671.672	10659.118	28330.791
SAN DIEGO	22521.664	16688.850	39210.516
SAN FRANCISCO	1505.090	2728.979	4234.069
SAN JOAQUIN	6813.172	4256.378	11069.551
SAN LUIS OBISPO	2495.556	1355.822	3851.378
SAN MATEO	5887.402	3065.001	8952.403
SANTA BARBARA	2874.584	1655.287	4529.871
SANTA CLARA	10314.452	9815.592	20130.043
SANTA CRUZ	1307.432	1313.651	2621.083
SHASTA	1699.153	1251.504	2950.657
SIERRA	79.137	56.332	135.468
SISKIYOU	681.219	348.289	1029.508
SOLANO	5077.625	2246.919	7324.543
SONOMA	3105.386	2689.403	5794.789
STANISLAUS	2744.455	3177.450	5921.905
SUTTER	672.296	495.671	1167.967
TEHAMA	828.322	370.921	1199.243
TRINITY	136.268	72.526	208.793
TULARE	2733.000	2559.715	5292.715
TUOLUMNE	433.477	351.290	784.767
VENTURA	4866.757	4084.296	8951.053
YOLO	2096.168	1116.341	3212.510
YUBA	485.245	480.408	965.654
TOTAL	247589.172	204070.781	451659.844

2025 ANNUAL STATEWIDE VMT DISTRIBUTION BY COUNTY (MILLIONS)

COUNTY	SHS	OTHER	TOTAL
ALAMEDA	13222.077	8771.359	21993.438
ALPINE	61.200	16.717	77.918
AMADOR	414.519	149.111	563.630
BUTTE	1017.079	1647.145	2664.224
CALAVERAS	483.865	254.115	737.980
COLUSA	764.004	189.781	953.785
CONTRA COSTA	7824.985	6591.137	14416.121
DEL NORTE	183.191	117.394	300.584
EL DORADO	1406.183	1273.014	2679.197
FRESNO	5430.095	7098.427	12528.521
GLENN	507.105	205.039	712.144
HUMBOLDT	917.552	665.693	1583.245
IMPERIAL	2109.201	996.153	3105.354
INYO	469.865	132.033	601.898
KERN	7774.235	5213.624	12987.858
KINGS	1318.983	926.030	2245.014
LAKE	528.261	317.976	846.236
LASSEN	376.451	378.414	754.865
LOS ANGELES	51263.680	55495.086	106758.766
MADERA	1793.232	766.988	2560.220
MARIN	1853.080	1500.829	3353.908
MARIPOSA	185.669	204.549	390.219
MENDOCINO	966.900	638.839	1605.738
MERCED	3392.997	1547.661	4940.658
MODOC	90.028	114.477	204.505
MONO	359.792	78.676	438.468
MONTEREY	3143.021	2376.472	5519.493
NAPA	1103.840	738.513	1842.354
NEVADA	1034.981	658.463	1693.444
ORANGE	19344.580	18216.852	37561.434
PLACER	3525.800	3055.090	6580.890
PLUMAS	201.211	206.244	407.455
RIVERSIDE	19810.826	12189.373	32000.199
SACRAMENTO	9844.527	11373.848	21218.375
SAN BENITO	532.835	280.285	813.120
SAN BERNARDINO	19423.150	11764.307	31187.457
SAN DIEGO	24369.855	18133.508	42503.363
SAN FRANCISCO	1544.491	2812.070	4356.561
SAN JOAQUIN	7910.977	4962.768	12873.745
SAN LUIS OBISPO	2681.996	1463.176	4145.172
SAN MATEO	6183.204	3232.389	9415.593
SANTA BARBARA	3014.915	1743.317	4758.232
SANTA CLARA	11012.827	10523.789	21536.615
SANTA CRUZ	1374.052	1386.332	2760.384
SHASTA	1877.211	1388.405	3265.616
SIERRA	83.260	59.513	142.773
SISKIYOU	698.760	358.743	1057.503
SOLANO	5712.363	2538.315	8250.679
SONOMA	3443.453	2994.591	6438.043
STANISLAUS	3039.502	3533.687	6573.189
SUTTER	740.015	547.868	1287.883
TEHAMA	885.659	398.246	1283.905
TRINITY	138.724	74.140	212.864
TULARE	3070.686	2887.954	5958.640
TUOLUMNE	460.834	375.014	835.848
VENTURA	5180.231	4365.456	9545.687
YOLO	2386.276	1276.129	3662.405
YUBA	537.807	534.661	1072.467
TOTAL	269026.125	221739.781	490765.875

2030 ANNUAL STATEWIDE VMT DISTRIBUTION BY COUNTY (MILLIONS)

COUNTY	SHS	OTHER	TOTAL
ALAMEDA	14393.072	9587.953	23981.025
ALPINE	63.939	17.538	81.478
AMADOR	439.616	158.797	598.414
BUTTE	1099.423	1787.917	2887.340
CALAVERAS	543.146	286.437	829.583
COLUSA	839.628	209.435	1049.063
CONTRA COSTA	8703.705	7361.835	16065.540
DEL NORTE	192.150	123.648	315.798
EL DORADO	1550.810	1409.791	2960.600
FRESNO	6010.049	7889.289	13899.338
GLENN	541.757	219.962	761.719
HUMBOLDT	957.152	697.315	1654.467
IMPERIAL	2369.506	1123.754	3493.259
INYO	480.393	135.554	615.947
KERN	8624.719	5808.073	14432.792
KINGS	1473.905	1039.108	2513.012
LAKE	580.095	350.630	930.725
LASSEN	392.722	396.415	789.137
LOS ANGELES	53629.617	58298.125	111927.742
MADERA	2009.190	862.935	2872.125
MARIN	1898.094	1543.689	3441.783
MARIPOSA	199.136	220.299	419.435
MENDOCINO	1025.043	680.075	1705.117
MERCED	3918.714	1794.903	5713.617
MODOC	90.551	115.621	206.172
MONO	387.714	85.135	472.849
MONTEREY	3397.606	2579.667	5977.273
NAPA	1214.612	816.009	2030.621
NEVADA	1132.700	723.635	1856.335
ORANGE	20577.584	19458.688	40036.270
PLACER	4051.160	3524.934	7576.094
PLUMAS	204.956	210.958	415.914
RIVERSIDE	22577.473	13949.521	36526.996
SACRAMENTO	11172.403	12961.771	24134.174
SAN BENITO	589.558	311.415	900.973
SAN BERNARDINO	21359.490	12991.004	34350.496
SAN DIEGO	26383.627	19713.719	46097.348
SAN FRANCISCO	1585.760	2899.234	4484.993
SAN JOAQUIN	9190.518	5789.473	14979.990
SAN LUIS OBISPO	2883.886	1579.871	4463.757
SAN MATEO	6497.296	3410.734	9908.030
SANTA BARBARA	3163.766	1837.007	5000.773
SANTA CLARA	11764.693	11289.094	23053.787
SANTA CRUZ	1444.829	1463.813	2908.642
SHASTA	2075.024	1541.101	3616.125
SIERRA	87.644	62.908	150.551
SISKIYOU	717.131	369.708	1086.839
SOLANO	6429.840	2869.031	9298.871
SONOMA	3820.339	3336.187	7156.526
STANISLAUS	3368.045	3931.955	7300.000
SUTTER	814.985	605.885	1420.870
TEHAMA	947.464	427.812	1375.276
TRINITY	141.298	75.831	217.129
TULARE	3451.916	3260.021	6711.937
TUOLUMNE	490.176	400.553	890.729
VENTURA	5516.805	4668.457	10185.262
YOLO	2717.968	1459.565	4177.533
YUBA	596.376	595.357	1191.733
TOTAL	292780.813	241319.109	534100.000

APPENDIX C

**CALIFORNIA VEHICLE FUEL CONSUMPTION
BY COUNTY AND ROAD SYSTEM**

2000 ANNUAL STATEWIDE VFC DISTRIBUTION BY COUNTY(MILLION GALLONS)

COUNTY	GASOLINE	DIESEL	TOTAL
ALAMEDA	653.376	99.330	752.706
ALPINE	2.650	0.408	3.059
AMADOR	17.115	2.774	19.889
BUTTE	93.391	12.767	106.159
CALAVERAS	18.011	2.522	20.532
COLUSA	23.092	12.050	35.142
CONTRA COSTA	370.883	53.103	423.986
DEL NORTE	11.149	2.315	13.464
EL DORADO	75.557	10.273	85.830
FRESNO	312.772	82.791	395.564
GLENN	19.630	8.607	28.237
HUMBOLDT	55.975	11.817	67.792
IMPERIAL	74.419	25.761	100.180
INYO	24.033	5.132	29.165
KERN	311.269	152.750	464.019
KINGS	50.008	18.711	68.718
LAKE	22.908	3.768	26.676
LASSEN	26.499	7.467	33.966
LOS ANGELES	3687.244	539.173	4226.416
MADERA	59.295	24.142	83.437
MARIN	130.150	14.896	145.046
MARIPOSA	12.286	1.104	13.390
MENDOCINO	52.947	8.813	61.759
MERCED	99.248	41.765	141.012
MODOC	8.630	2.498	11.128
MONO	13.547	3.015	16.562
MONTEREY	165.433	35.240	200.673
NAPA	53.296	9.764	63.060
NEVADA	49.821	12.489	62.310
ORANGE	1206.531	156.766	1363.297
PLACER	134.639	26.590	161.229
PLUMAS	16.343	3.567	19.910
RIVERSIDE	646.122	172.030	818.152
SACRAMENTO	483.659	79.986	563.645
SAN BENITO	24.345	6.965	31.310
SAN BERNARDINO	783.827	228.658	1012.485
SAN DIEGO	1222.122	154.059	1376.181
SAN FRANCISCO	181.247	15.156	196.403
SAN JOAQUIN	247.292	88.785	336.077
SAN LUIS OBISPO	121.548	25.156	146.704
SAN MATEO	346.404	36.871	383.275
SANTA BARBARA	165.768	27.635	193.403
SANTA CLARA	721.112	86.635	807.748
SANTA CRUZ	95.487	10.465	105.953
SHASTA	86.176	28.616	114.792
SIERRA	5.008	1.714	6.722
SISKIYOU	38.758	21.333	60.091
SOLANO	197.171	40.874	238.045
SONOMA	170.175	28.941	199.116
STANISLAUS	155.259	40.195	195.454
SUTTER	34.613	5.723	40.336
TEHAMA	37.278	16.373	53.651
TRINITY	8.432	2.073	10.505
TULARE	139.093	49.922	189.015
TUOLUMNE	26.480	3.533	30.013
VENTURA	299.855	40.762	340.617
YOLO	84.187	23.197	107.384
YUBA	27.976	4.935	32.911
TOTAL	14201.540	2632.760	16834.300

2005 ANNUAL STATEWIDE VFC DISTRIBUTION BY COUNTY (MILLION GALLONS)

COUNTY	GASOLINE	DIESEL	TOTAL
ALAMEDA	670.123	99.525	769.649
ALPINE	2.680	0.442	3.123
AMADOR	18.407	3.289	21.696
BUTTE	87.140	13.878	101.017
CALAVERAS	19.668	2.874	22.542
COLUSA	24.572	14.254	38.826
CONTRA COSTA	410.319	49.372	459.691
DEL NORTE	10.470	2.199	12.670
EL DORADO	78.728	11.692	90.421
FRESNO	360.561	97.466	458.027
GLENN	21.293	10.546	31.840
HUMBOLDT	56.486	13.046	69.532
IMPERIAL	78.703	27.594	106.297
INYO	22.194	5.599	27.793
KERN	342.356	168.322	510.678
KINGS	58.639	23.646	82.285
LAKE	24.459	5.148	29.607
LASSEN	27.082	7.698	34.780
LOS ANGELES	3907.487	593.794	4501.281
MADERA	64.266	27.583	91.849
MARIN	133.010	13.475	146.485
MARIPOSA	13.086	1.293	14.379
MENDOCINO	53.900	10.280	64.180
MERCED	110.435	46.059	156.494
MODOC	8.538	2.697	11.235
MONO	13.036	3.050	16.086
MONTEREY	171.465	37.942	209.407
NAPA	53.910	7.440	61.350
NEVADA	49.231	12.863	62.094
ORANGE	1282.929	166.318	1449.247
PLACER	161.579	34.380	195.959
PLUMAS	16.386	3.254	19.640
RIVERSIDE	787.361	217.765	1005.126
SACRAMENTO	561.427	91.035	652.462
SAN BENITO	22.093	7.346	29.439
SAN BERNARDINO	879.529	267.260	1146.789
SAN DIEGO	1335.816	177.344	1513.160
SAN FRANCISCO	179.112	13.831	192.943
SAN JOAQUIN	290.549	95.412	385.961
SAN LUIS OBISPO	129.705	27.243	156.949
SAN MATEO	330.276	31.312	361.588
SANTA BARBARA	166.248	27.020	193.268
SANTA CLARA	725.990	83.422	809.411
SANTA CRUZ	99.599	10.531	110.130
SHASTA	91.305	26.878	118.184
SIERRA	4.813	1.576	6.388
SISKIYOU	37.575	18.419	55.994
SOLANO	215.431	33.211	248.643
SONOMA	184.507	26.595	211.103
STANISLAUS	186.763	52.546	239.309
SUTTER	37.399	6.821	44.220
TEHAMA	39.040	15.880	54.921
TRINITY	8.224	1.923	10.147
TULARE	155.245	57.671	212.916
TUOLUMNE	28.220	4.237	32.457
VENTURA	322.297	43.573	365.870
YOLO	89.170	27.257	116.427
YUBA	30.298	7.750	38.048
TOTAL	15291.135	2890.875	18182.010

2010 ANNUAL STATEWIDE VFC DISTRIBUTION BY COUNTY (MILLION GALLONS)

COUNTY	GASOLINE	DIESEL	TOTAL
ALAMEDA	732.979	109.223	842.203
ALPINE	2.812	0.466	3.278
AMADOR	19.605	3.526	23.131
BUTTE	94.730	15.179	109.908
CALAVERAS	22.179	3.252	25.430
COLUSA	27.134	16.016	43.150
CONTRA COSTA	458.675	55.118	513.794
DEL NORTE	11.036	2.340	13.376
EL DORADO	87.267	13.021	100.288
FRESNO	401.357	109.870	511.227
GLENN	22.863	11.516	34.378
HUMBOLDT	59.221	13.830	73.051
IMPERIAL	88.848	31.608	120.456
INYO	22.788	5.814	28.602
KERN	381.912	190.931	572.843
KINGS	65.878	26.994	92.872
LAKE	26.988	5.737	32.725
LASSEN	28.407	8.186	36.594
LOS ANGELES	4109.473	627.318	4736.790
MADERA	72.360	31.572	103.932
MARIN	136.911	13.784	150.695
MARIPOSA	14.109	1.384	15.492
MENDOCINO	57.420	11.040	68.460
MERCED	128.184	54.306	182.490
MODOC	8.637	2.769	11.407
MONO	14.104	3.334	17.438
MONTEREY	186.298	41.629	227.928
NAPA	59.604	8.241	67.845
NEVADA	54.148	14.317	68.465
ORANGE	1371.681	177.996	1549.677
PLACER	186.624	40.080	226.704
PLUMAS	16.780	3.363	20.143
RIVERSIDE	901.801	252.548	1154.349
SACRAMENTO	640.587	104.451	745.038
SAN BENITO	24.565	8.289	32.855
SAN BERNARDINO	972.093	299.318	1271.411
SAN DIEGO	1453.280	193.102	1646.382
SAN FRANCISCO	184.938	14.066	199.003
SAN JOAQUIN	339.269	113.008	452.276
SAN LUIS OBISPO	140.127	29.715	169.843
SAN MATEO	348.606	32.749	381.355
SANTA BARBARA	175.278	28.620	203.898
SANTA CLARA	779.518	89.352	868.871
SANTA CRUZ	105.269	11.074	116.343
SHASTA	101.453	30.261	131.714
SIERRA	5.093	1.691	6.784
SISKIYOU	38.766	19.321	58.088
SOLANO	243.566	37.683	281.249
SONOMA	205.737	29.755	235.492
STANISLAUS	208.112	59.344	267.456
SUTTER	41.394	7.601	48.995
TEHAMA	41.972	17.343	59.315
TRINITY	8.416	1.989	10.406
TULARE	175.493	66.222	241.715
TUOLUMNE	30.167	4.549	34.715
VENTURA	344.960	46.714	391.674
YOLO	102.065	31.615	133.680
YUBA	33.780	8.749	42.528
TOTAL	16617.318	3192.892	19810.210

2015 ANNUAL STATEWIDE VFC DISTRIBUTION BY COUNTY (MILLION GALLONS)

COUNTY	GASOLINE	DIESEL	TOTAL
ALAMEDA	817.804	120.595	938.399
ALPINE	3.009	0.494	3.502
AMADOR	21.302	3.796	25.098
BUTTE	105.050	16.690	121.740
CALAVERAS	25.510	3.702	29.212
COLUSA	30.614	17.947	48.561
CONTRA COSTA	522.955	62.080	585.035
DEL NORTE	11.868	2.497	14.365
EL DORADO	98.672	14.588	113.261
FRESNO	455.936	123.946	579.882
GLENN	25.073	12.546	37.619
HUMBOLDT	63.352	14.689	78.041
IMPERIAL	102.390	36.179	138.569
INYO	23.875	6.045	29.920
KERN	435.136	216.107	651.244
KINGS	75.565	30.774	106.340
LAKE	30.383	6.409	36.792
LASSEN	30.410	8.710	39.119
LOS ANGELES	4408.616	666.595	5075.211
MADERA	83.193	36.079	119.272
MARIN	143.726	14.264	157.990
MARIPOSA	15.513	1.499	17.012
MENDOCINO	62.406	11.897	74.303
MERCED	151.921	63.931	215.853
MODOC	8.918	2.843	11.761
MONO	15.570	3.652	19.222
MONTEREY	206.529	45.775	252.304
NAPA	67.219	9.192	76.410
NEVADA	60.777	15.951	76.728
ORANGE	1495.873	191.985	1687.858
PLACER	219.925	46.841	266.767
PLUMAS	17.531	3.488	21.019
RIVERSIDE	1054.087	293.061	1347.149
SACRAMENTO	745.602	120.454	866.056
SAN BENITO	27.881	9.350	37.231
SAN BERNARDINO	1096.574	335.231	1431.805
SAN DIEGO	1612.675	211.835	1824.511
SAN FRANCISCO	194.730	14.549	209.279
SAN JOAQUIN	404.372	133.795	538.167
SAN LUIS OBISPO	154.458	32.496	186.954
SAN MATEO	375.255	34.691	409.945
SANTA BARBARA	188.513	30.467	218.980
SANTA CLARA	853.668	96.619	950.287
SANTA CRUZ	113.475	11.772	125.247
SHASTA	115.052	34.077	149.128
SIERRA	5.501	1.815	7.316
SISKIYOU	40.849	20.224	61.073
SOLANO	280.901	42.998	323.899
SONOMA	234.006	33.504	267.510
STANISLAUS	236.669	67.056	303.726
SUTTER	46.740	8.503	55.243
TEHAMA	46.072	18.913	64.985
TRINITY	8.789	2.062	10.851
TULARE	202.529	75.965	278.494
TUOLUMNE	32.895	4.912	37.807
VENTURA	376.601	50.444	427.045
YOLO	119.237	36.669	155.907
YUBA	38.431	9.887	48.319
TOTAL	18442.186	3543.137	21985.323

2020 ANNUAL STATEWIDE VFC DISTRIBUTION BY COUNTY (MILLION GALLONS)

COUNTY	GASOLINE	DIESEL	TOTAL
ALAMEDA	897.005	131.944	1028.949
ALPINE	3.165	0.518	3.683
AMADOR	22.750	4.047	26.797
BUTTE	114.518	18.179	132.696
CALAVERAS	28.847	4.177	33.023
COLUSA	33.884	19.856	53.740
CONTRA COSTA	586.235	69.367	655.601
DEL NORTE	12.544	2.636	15.179
EL DORADO	109.680	16.197	125.876
FRESNO	508.869	138.255	647.124
GLENN	26.985	13.499	40.484
HUMBOLDT	66.598	15.432	82.031
IMPERIAL	115.883	40.921	156.804
INYO	24.579	6.215	30.794
KERN	486.572	241.566	728.138
KINGS	85.105	34.659	119.765
LAKE	33.615	7.086	40.702
LASSEN	31.982	9.161	41.142
LOS ANGELES	4649.432	701.834	5351.266
MADERA	93.901	40.725	134.626
MARIN	148.362	14.660	163.022
MARIPOSA	16.773	1.612	18.386
MENDOCINO	66.663	12.691	79.354
MERCED	176.774	74.347	251.121
MODOC	9.045	2.886	11.930
MONO	16.891	3.956	20.847
MONTEREY	225.003	49.796	274.799
NAPA	74.527	10.163	84.690
NEVADA	67.025	17.574	84.599
ORANGE	1603.854	205.344	1809.198
PLACER	254.703	54.168	308.871
PLUMAS	18.001	3.580	21.581
RIVERSIDE	1210.481	336.231	1546.712
SACRAMENTO	853.092	137.594	990.686
SAN BENITO	31.080	10.423	41.503
SAN BERNARDINO	1215.140	371.123	1586.263
SAN DIEGO	1759.408	230.413	1989.821
SAN FRANCISCO	201.642	14.981	216.623
SAN JOAQUIN	473.396	156.552	629.948
SAN LUIS OBISPO	167.322	35.165	202.487
SAN MATEO	397.209	36.516	433.725
SANTA BARBARA	199.303	32.126	231.429
SANTA CLARA	919.204	103.679	1022.883
SANTA CRUZ	120.276	12.425	132.701
SHASTA	128.174	37.933	166.108
SIERRA	5.836	1.925	7.761
SISKIYOU	42.245	20.907	63.151
SOLANO	318.468	48.608	367.075
SONOMA	261.661	37.389	299.050
STANISLAUS	264.419	74.912	339.331
SUTTER	51.874	9.418	61.292
TEHAMA	49.655	20.375	70.029
TRINITY	9.019	2.114	11.132
TULARE	229.524	86.099	315.624
TUOLUMNE	35.262	5.256	40.518
VENTURA	404.213	54.005	458.218
YOLO	136.836	42.041	178.877
YUBA	42.961	11.050	54.011
TOTAL	20137.467	3896.307	24033.774

2025 ANNUAL STATEWIDE VFC DISTRIBUTION BY COUNTY (MILLION GALLONS)

COUNTY	GASOLINE	DIESEL	TOTAL
ALAMEDA	975.462	142.654	1118.116
ALPINE	3.300	0.537	3.837
AMADOR	24.090	4.259	28.349
BUTTE	123.771	19.560	143.331
CALAVERAS	32.340	4.657	36.997
COLUSA	37.180	21.634	58.814
CONTRA COSTA	651.553	76.678	728.231
DEL NORTE	13.144	2.746	15.890
EL DORADO	120.872	17.769	138.642
FRESNO	563.084	152.073	715.157
GLENN	28.794	14.306	43.100
HUMBOLDT	69.411	15.995	85.407
IMPERIAL	130.031	45.615	175.645
INYO	25.086	6.302	31.388
KERN	539.414	265.974	805.388
KINGS	95.027	38.461	133.488
LAKE	36.874	7.731	44.605
LASSEN	33.346	9.500	42.847
LOS ANGELES	4861.467	730.120	5591.587
MADERA	105.077	45.289	150.366
MARIN	151.839	14.922	166.761
MARIPOSA	17.980	1.719	19.699
MENDOCINO	70.602	13.364	83.966
MERCED	203.928	85.184	289.112
MODOC	9.095	2.887	11.981
MONO	18.167	4.228	22.395
MONTEREY	243.031	53.448	296.479
NAPA	81.923	11.108	93.031
NEVADA	73.282	19.094	92.377
ORANGE	1704.927	217.185	1922.112
PLACER	292.456	61.812	354.268
PLUMAS	18.326	3.626	21.952
RIVERSIDE	1378.171	380.381	1758.551
SACRAMENTO	967.730	155.252	1122.982
SAN BENITO	34.350	11.452	45.802
SAN BERNARDINO	1334.985	405.039	1740.025
SAN DIEGO	1903.078	247.797	2150.875
SAN FRANCISCO	207.016	15.312	222.328
SAN JOAQUIN	549.452	180.556	730.007
SAN LUIS OBISPO	179.705	37.552	217.257
SAN MATEO	416.854	38.087	454.941
SANTA BARBARA	208.908	33.462	242.369
SANTA CLARA	981.310	110.093	1091.403
SANTA CRUZ	126.394	12.985	139.379
SHASTA	141.570	41.632	183.202
SIERRA	6.138	2.012	8.150
SISKIYOU	43.313	21.288	64.600
SOLANO	357.970	54.291	412.261
SONOMA	290.082	41.238	331.320
STANISLAUS	292.892	82.516	375.409
SUTTER	57.080	10.298	67.379
TEHAMA	53.057	21.627	74.683
TRINITY	9.175	2.138	11.313
TULARE	257.888	96.165	354.052
TUOLUMNE	37.477	5.557	43.034
VENTURA	430.140	57.160	487.301
YOLO	155.686	47.517	203.202
YUBA	47.614	12.180	59.794
TOTAL	21822.914	4234.026	26056.940

2030 ANNUAL STATEWIDE VFC DISTRIBUTION BY COUNTY (MILLION GALLONS)

COUNTY	GASOLINE	DIESEL	TOTAL
ALAMEDA	1062.217	155.150	1217.368
ALPINE	3.446	0.560	4.006
AMADOR	25.542	4.509	30.051
BUTTE	133.951	21.171	155.122
CALAVERAS	36.306	5.223	41.529
COLUSA	40.832	23.700	64.532
CONTRA COSTA	725.156	85.277	810.433
DEL NORTE	13.790	2.877	16.667
EL DORADO	133.388	19.611	152.999
FRESNO	623.828	168.217	792.045
GLENN	30.753	15.245	45.998
HUMBOLDT	72.434	16.673	89.107
IMPERIAL	146.067	51.130	197.197
INYO	25.636	6.427	32.063
KERN	598.559	294.453	893.012
KINGS	106.217	42.915	149.132
LAKE	40.499	8.483	48.983
LASSEN	34.811	9.908	44.719
LOS ANGELES	5090.039	764.046	5854.085
MADERA	117.703	50.642	168.345
MARIN	155.616	15.284	170.901
MARIPOSA	19.302	1.843	21.145
MENDOCINO	74.871	14.154	89.025
MERCED	235.495	98.139	333.634
MODOC	9.155	2.904	12.059
MONO	19.563	4.544	24.108
MONTEREY	262.836	57.697	320.533
NAPA	90.176	12.213	102.390
NEVADA	80.222	20.864	101.086
ORANGE	1814.867	231.096	2045.963
PLACER	336.234	70.940	407.174
PLUMAS	18.680	3.694	22.375
RIVERSIDE	1570.975	432.752	2003.727
SACRAMENTO	1099.242	176.208	1275.450
SAN BENITO	38.006	12.653	50.659
SAN BERNARDINO	1468.365	444.532	1912.896
SAN DIEGO	2061.308	268.098	2329.406
SAN FRANCISCO	212.839	15.753	228.592
SAN JOAQUIN	638.452	209.401	847.853
SAN LUIS OBISPO	193.253	40.331	233.584
SAN MATEO	438.091	39.978	478.069
SANTA BARBARA	219.268	35.058	254.326
SANTA CLARA	1049.075	117.622	1166.697
SANTA CRUZ	133.011	13.654	146.666
SHASTA	156.549	45.948	202.497
SIERRA	6.463	2.115	8.579
SISKIYOU	44.449	21.795	66.244
SOLANO	402.914	60.998	463.912
SONOMA	322.027	45.754	367.781
STANISLAUS	324.819	91.405	416.224
SUTTER	62.892	11.327	74.218
TEHAMA	56.751	23.082	79.833
TRINITY	9.346	2.174	11.521
TULARE	290.071	108.002	398.073
TUOLUMNE	39.884	5.911	45.795
VENTURA	458.358	60.864	519.221
YOLO	177.339	54.006	231.345
YUBA	52.835	13.501	66.336
TOTAL	23704.773	4632.513	28337.286

APPENDIX D

**CALIFORNIA TRUCK MILES OF TRAVEL
BY COUNTY AND ROAD SYSTEM**

2000 ANNUAL STATEWIDE TMT DISTRIBUTION BY COUNTY (MILLIONS)

COUNTY	SHS	OTHER	TOTAL
ALAMEDA	580.291	214.801	795.091
ALPINE	2.789	0.480	3.269
AMADOR	17.591	4.725	22.317
BUTTE	49.262	52.171	101.433
CALAVERAS	14.032	5.993	20.025
COLUSA	96.022	6.768	102.789
CONTRA COSTA	281.663	141.243	422.906
DEL NORTE	14.996	4.001	18.997
EL DORADO	45.642	35.841	81.483
FRESNO	474.678	215.784	690.462
GLENN	64.699	8.405	73.105
HUMBOLDT	70.031	27.138	97.169
IMPERIAL	186.535	30.496	217.031
INYO	36.731	5.418	42.149
KERN	1109.778	192.524	1302.302
KINGS	127.227	31.001	158.227
LAKE	21.109	9.283	30.393
LASSEN	43.865	18.596	62.461
LOS ANGELES	2591.534	1715.261	4306.795
MADERA	167.997	36.728	204.725
MARIN	74.150	41.441	115.591
MARIPOSA	5.147	3.106	8.253
MENDOCINO	51.317	19.823	71.140
MERCED	308.646	45.666	354.312
MODOC	13.563	7.373	20.936
MONO	21.764	3.061	24.826
MONTEREY	221.029	68.760	289.789
NAPA	58.877	20.557	79.434
NEVADA	85.365	18.283	103.648
ORANGE	731.272	505.308	1236.580
PLACER	171.673	45.731	217.405
PLUMAS	19.589	9.828	29.417
RIVERSIDE	1151.737	281.089	1432.825
SACRAMENTO	421.036	224.937	645.973
SAN BENITO	44.845	13.409	58.254
SAN BERNARDINO	1599.259	313.180	1912.438
SAN DIEGO	824.038	385.445	1209.483
SAN FRANCISCO	48.249	63.929	112.178
SAN JOAQUIN	602.655	146.985	749.640
SAN LUIS OBISPO	157.664	48.792	206.456
SAN MATEO	207.012	75.866	282.878
SANTA BARBARA	172.877	50.076	222.953
SANTA CLARA	410.624	266.197	676.821
SANTA CRUZ	49.388	31.375	80.763
SHASTA	195.352	45.471	240.823
SIERRA	11.752	2.692	14.444
SISKIYOU	162.339	19.998	182.338
SOLANO	277.978	57.209	335.187
SONOMA	151.286	83.033	234.319
STANISLAUS	220.281	114.659	334.940
SUTTER	33.145	13.030	46.175
TEHAMA	121.662	17.431	139.093
TRINITY	13.088	4.112	17.201
TULARE	306.069	115.872	421.941
TUOLUMNE	17.725	10.211	27.936
VENTURA	209.647	113.254	322.901
YOLO	162.114	31.348	193.462
YUBA	24.994	15.094	40.089
TOTAL	15355.684	6090.287	21445.971

2005 ANNUAL STATEWIDE TMT DISTRIBUTION BY COUNTY (MILLIONS)

COUNTY	SHS	OTHER	TOTAL
ALAMEDA	554.399	219.094	773.493
ALPINE	3.048	0.546	3.594
AMADOR	21.411	5.265	26.675
BUTTE	53.470	50.455	103.925
CALAVERAS	15.701	6.533	22.234
COLUSA	119.629	8.684	128.313
CONTRA COSTA	231.422	133.219	364.641
DEL NORTE	13.417	4.486	17.903
EL DORADO	49.514	38.234	87.749
FRESNO	570.704	231.618	802.322
GLENN	82.379	10.917	93.297
HUMBOLDT	76.383	29.915	106.298
IMPERIAL	203.694	34.983	238.678
INYO	41.627	6.036	47.663
KERN	1249.039	226.486	1475.525
KINGS	160.862	42.097	202.958
LAKE	29.860	11.739	41.599
LASSEN	43.316	19.886	63.202
LOS ANGELES	2741.780	1771.952	4513.731
MADERA	200.518	39.362	239.880
MARIN	58.337	37.429	95.767
MARIPOSA	5.642	3.514	9.156
MENDOCINO	60.533	22.051	82.584
MERCED	353.589	50.303	403.892
MODOC	14.222	7.854	22.075
MONO	22.580	3.236	25.817
MONTEREY	242.587	69.700	312.287
NAPA	39.929	17.087	57.016
NEVADA	85.953	21.840	107.793
ORANGE	736.806	496.194	1233.000
PLACER	211.914	68.647	280.561
PLUMAS	16.074	9.537	25.611
RIVERSIDE	1486.580	350.742	1837.322
SACRAMENTO	443.883	257.830	701.713
SAN BENITO	49.059	13.294	62.352
SAN BERNARDINO	1899.551	381.914	2281.466
SAN DIEGO	930.437	417.535	1347.972
SAN FRANCISCO	30.572	56.206	86.777
SAN JOAQUIN	658.920	154.834	813.754
SAN LUIS OBISPO	167.540	54.484	222.024
SAN MATEO	158.774	65.579	224.353
SANTA BARBARA	169.124	46.675	215.798
SANTA CLARA	369.532	237.953	607.485
SANTA CRUZ	46.074	29.441	75.515
SHASTA	180.503	46.459	226.962
SIERRA	10.471	2.883	13.354
SISKIYOU	141.614	20.821	162.434
SOLANO	212.180	52.456	264.636
SONOMA	126.511	75.135	201.646
STANISLAUS	297.371	134.127	431.498
SUTTER	41.969	12.969	54.938
TEHAMA	119.531	19.121	138.652
TRINITY	12.320	3.571	15.891
TULARE	364.198	123.562	487.759
TUOLUMNE	20.717	11.677	32.394
VENTURA	212.266	116.444	328.710
YOLO	197.057	36.356	233.413
YUBA	43.654	19.581	63.236
TOTAL	16700.746	6440.547	23141.293

2010 ANNUAL STATEWIDE TMT DISTRIBUTION BY COUNTY (MILLIONS)

COUNTY	SHS	OTHER	TOTAL
ALAMEDA	625.255	249.737	874.992
ALPINE	3.300	0.597	3.897
AMADOR	23.526	5.847	29.372
BUTTE	59.883	57.110	116.992
CALAVERAS	18.260	7.679	25.939
COLUSA	136.210	9.993	146.203
CONTRA COSTA	266.689	155.162	421.851
DEL NORTE	14.580	4.927	19.508
EL DORADO	56.576	44.154	100.729
FRESNO	654.429	268.436	922.865
GLENN	91.181	12.213	103.394
HUMBOLDT	82.552	32.677	115.229
IMPERIAL	237.082	41.153	278.235
INYO	44.094	6.462	50.556
KERN	1435.634	263.104	1698.738
KINGS	186.236	49.258	235.494
LAKE	33.972	13.499	47.470
LASSEN	46.818	21.723	68.541
LOS ANGELES	2971.721	1941.089	4912.810
MADERA	232.765	46.181	278.946
MARIN	61.909	40.145	102.054
MARIPOSA	6.269	3.947	10.216
MENDOCINO	66.487	24.478	90.965
MERCED	423.096	60.835	483.931
MODOC	14.820	8.271	23.091
MONO	25.210	3.652	28.862
MONTEREY	271.691	78.896	350.586
NAPA	45.520	19.687	65.207
NEVADA	97.459	25.028	122.488
ORANGE	812.023	552.695	1364.718
PLACER	252.268	82.593	334.861
PLUMAS	16.963	10.172	27.135
RIVERSIDE	1755.261	418.561	2173.822
SACRAMENTO	521.916	306.397	828.313
SAN BENITO	56.238	15.402	71.640
SAN BERNARDINO	2164.227	439.780	2604.007
SAN DIEGO	1043.636	473.339	1516.975
SAN FRANCISCO	32.520	60.427	92.947
SAN JOAQUIN	793.091	188.354	981.445
SAN LUIS OBISPO	186.647	61.346	247.993
SAN MATEO	172.854	72.157	245.012
SANTA BARBARA	183.871	51.287	235.159
SANTA CLARA	408.991	266.178	675.169
SANTA CRUZ	50.193	32.416	82.610
SHASTA	206.717	53.774	260.491
SIERRA	11.420	3.178	14.598
SISKIYOU	150.576	22.375	172.951
SOLANO	247.439	61.827	309.267
SONOMA	145.417	87.287	232.704
STANISLAUS	341.393	155.629	497.022
SUTTER	47.887	14.956	62.843
TEHAMA	132.483	21.419	153.902
TRINITY	13.001	3.809	16.810
TULARE	424.172	145.448	569.620
TUOLUMNE	22.831	13.006	35.836
VENTURA	234.207	129.854	364.060
YOLO	232.539	43.361	275.899
YUBA	50.154	22.737	72.891
TOTAL	18944.158	7305.707	26249.865

2015 ANNUAL STATEWIDE TMT DISTRIBUTION BY COUNTY (MILLIONS)

COUNTY	SHS	OTHER	TOTAL
ALAMEDA	700.250	282.679	982.929
ALPINE	3.547	0.649	4.195
AMADOR	25.669	6.447	32.117
BUTTE	66.597	64.192	130.788
CALAVERAS	21.088	8.963	30.051
COLUSA	154.007	11.420	165.427
CONTRA COSTA	305.188	179.458	484.646
DEL NORTE	15.734	5.374	21.109
EL DORADO	64.193	50.634	114.827
FRESNO	745.204	308.937	1054.140
GLENN	100.220	13.567	113.787
HUMBOLDT	88.597	35.445	124.042
IMPERIAL	274.019	48.073	322.092
INYO	46.382	6.870	53.252
KERN	1638.601	303.509	1942.110
KINGS	214.110	57.235	271.345
LAKE	38.381	15.413	53.794
LASSEN	50.249	23.565	73.814
LOS ANGELES	3198.491	2111.533	5310.023
MADERA	268.315	53.803	322.118
MARIN	65.241	42.758	107.998
MARIPOSA	6.917	4.402	11.319
MENDOCINO	72.517	26.984	99.500
MERCED	502.738	73.058	575.796
MODOC	15.335	8.651	23.986
MONO	27.949	4.092	32.041
MONTEREY	302.164	88.682	390.846
NAPA	51.531	22.526	74.057
NEVADA	109.736	28.482	138.218
ORANGE	888.681	611.333	1500.014
PLACER	298.212	98.679	396.891
PLUMAS	17.777	10.774	28.551
RIVERSIDE	2058.053	496.009	2554.062
SACRAMENTO	609.388	361.571	970.959
SAN BENITO	64.018	17.720	81.739
SAN BERNARDINO	2448.589	502.880	2951.469
SAN DIEGO	1162.446	532.858	1695.304
SAN FRANCISCO	34.351	64.512	98.863
SAN JOAQUIN	947.927	227.531	1175.459
SAN LUIS OBISPO	206.482	68.591	275.073
SAN MATEO	186.871	78.842	265.713
SANTA BARBARA	198.511	55.962	254.474
SANTA CLARA	449.509	295.673	745.182
SANTA CRUZ	54.300	35.443	89.744
SHASTA	235.087	61.808	296.894
SIERRA	12.368	3.479	15.846
SISKIYOU	158.990	23.878	182.867
SOLANO	286.547	72.364	358.911
SONOMA	165.984	100.697	266.681
STANISLAUS	389.199	179.318	568.517
SUTTER	54.259	17.127	71.386
TEHAMA	145.814	23.826	169.639
TRINITY	13.624	4.034	17.659
TULARE	490.579	170.016	660.595
TUOLUMNE	24.984	14.385	39.369
VENTURA	256.614	143.797	400.411
YOLO	272.497	51.354	323.851
YUBA	57.219	26.217	83.436
TOTAL	21361.844	8238.076	29599.920

2020 ANNUAL STATEWIDE TMT DISTRIBUTION BY COUNTY (MILLIONS)

COUNTY	SHS	OTHER	TOTAL
ALAMEDA	771.317	314.688	1086.005
ALPINE	3.749	0.693	4.442
AMADOR	27.546	6.993	34.539
BUTTE	72.843	70.961	143.804
CALAVERAS	23.953	10.289	34.242
COLUSA	171.261	12.834	184.095
CONTRA COSTA	343.490	204.135	547.625
DEL NORTE	16.700	5.765	22.465
EL DORADO	71.636	57.107	128.743
FRESNO	834.587	349.681	1184.268
GLENN	108.339	14.823	123.162
HUMBOLDT	93.518	37.812	131.330
IMPERIAL	311.492	55.229	366.721
INYO	47.984	7.183	55.167
KERN	1839.443	344.343	2183.786
KINGS	242.098	65.407	307.506
LAKE	42.647	17.309	59.956
LASSEN	53.044	25.140	78.184
LOS ANGELES	3385.837	2259.045	5644.882
MADERA	304.197	61.648	365.845
MARIN	67.619	44.789	112.408
MARIPOSA	7.507	4.828	12.335
MENDOCINO	77.790	29.255	107.045
MERCED	587.526	86.290	673.817
MODOC	15.608	8.898	24.506
MONO	30.476	4.510	34.985
MONTEREY	330.517	98.038	428.555
NAPA	57.376	25.348	82.724
NEVADA	121.522	31.878	153.400
ORANGE	956.548	665.036	1621.584
PLACER	346.715	115.952	462.667
PLUMAS	18.323	11.223	29.546
RIVERSIDE	2373.314	578.089	2951.403
SACRAMENTO	699.797	419.641	1119.437
SAN BENITO	71.674	20.051	91.726
SAN BERNARDINO	2724.665	565.546	3290.211
SAN DIEGO	1273.445	589.964	1863.409
SAN FRANCISCO	35.688	67.737	103.425
SAN JOAQUIN	1114.323	270.323	1384.646
SAN LUIS OBISPO	224.661	75.425	300.087
SAN MATEO	198.695	84.725	283.419
SANTA BARBARA	210.786	60.056	270.842
SANTA CLARA	485.899	323.017	808.916
SANTA CRUZ	57.775	38.114	95.889
SHASTA	262.944	69.869	332.813
SIERRA	13.173	3.745	16.918
SISKIYOU	165.107	25.061	190.168
SOLANO	326.367	83.299	409.666
SONOMA	186.337	114.250	300.587
STANISLAUS	436.389	203.203	639.592
SUTTER	60.465	19.290	79.755
TEHAMA	157.841	26.066	183.907
TRINITY	14.042	4.202	18.244
TULARE	558.034	195.455	753.489
TUOLUMNE	26.890	15.647	42.538
VENTURA	276.531	156.611	433.142
YOLO	314.058	59.818	373.877
YUBA	64.204	29.731	93.935
TOTAL	23716.314	9146.065	32862.380

2025 ANNUAL STATEWIDE TMT DISTRIBUTION BY COUNTY (MILLIONS)

COUNTY	SHS	OTHER	TOTAL
ALAMEDA	836.917	345.080	1181.997
ALPINE	3.905	0.729	4.634
AMADOR	29.120	7.471	36.591
BUTTE	78.486	77.271	155.758
CALAVERAS	26.800	11.635	38.435
COLUSA	187.605	14.209	201.814
CONTRA COSTA	380.829	228.730	609.559
DEL NORTE	17.460	6.091	23.551
EL DORADO	78.749	63.444	142.193
FRESNO	920.742	389.878	1310.620
GLENN	115.369	15.952	131.321
HUMBOLDT	97.239	39.735	136.974
IMPERIAL	348.804	62.502	411.307
INYO	48.901	7.398	56.299
KERN	2034.085	384.826	2418.912
KINGS	269.661	73.628	343.289
LAKE	46.680	19.148	65.828
LASSEN	55.158	26.420	81.578
LOS ANGELES	3530.665	2380.708	5911.373
MADERA	339.731	69.581	409.312
MARIN	69.038	46.215	115.253
MARIPOSA	8.026	5.216	13.242
MENDOCINO	82.202	31.242	113.444
MERCED	676.368	100.394	776.762
MODOC	15.648	9.016	24.663
MONO	32.735	4.895	37.630
MONTEREY	356.136	106.760	462.895
NAPA	62.930	28.097	91.027
NEVADA	132.567	35.144	167.711
ORANGE	1014.232	712.634	1726.866
PLACER	397.091	134.210	531.301
PLUMAS	18.604	11.516	30.120
RIVERSIDE	2696.022	663.672	3359.694
SACRAMENTO	791.624	479.751	1271.375
SAN BENITO	79.049	22.349	101.397
SAN BERNARDINO	2986.619	626.506	3613.125
SAN DIEGO	1374.224	643.418	2017.642
SAN FRANCISCO	36.523	70.059	106.582
SAN JOAQUIN	1290.376	316.358	1606.735
SAN LUIS OBISPO	240.793	81.700	322.493
SAN MATEO	208.114	89.684	297.798
SANTA BARBARA	220.478	63.485	283.963
SANTA CLARA	517.396	347.611	865.007
SANTA CRUZ	60.555	40.372	100.927
SHASTA	289.714	77.800	367.514
SIERRA	13.822	3.971	17.793
SISKIYOU	168.901	25.909	194.810
SOLANO	366.172	94.452	460.624
SONOMA	206.064	127.688	333.752
STANISLAUS	481.997	226.826	708.823
SUTTER	66.376	21.400	87.776
TEHAMA	168.311	28.091	196.401
TRINITY	14.257	4.312	18.568
TULARE	625.289	221.339	846.628
TUOLUMNE	28.510	16.766	45.276
VENTURA	293.548	168.014	461.562
YOLO	356.558	68.635	425.192
YUBA	70.966	33.212	104.178
TOTAL	25964.736	10013.154	35977.891

2030 ANNUAL STATEWIDE TMT DISTRIBUTION BY COUNTY (MILLIONS)

COUNTY	SHS	OTHER	TOTAL
ALAMEDA	911.888	379.969	1291.857
ALPINE	4.083	0.771	4.854
AMADOR	30.912	8.014	38.926
BUTTE	84.920	84.490	169.410
CALAVERAS	30.112	13.211	43.323
COLUSA	206.368	15.795	222.163
CONTRA COSTA	423.991	257.347	681.337
DEL NORTE	18.331	6.463	24.794
EL DORADO	86.929	70.776	157.705
FRESNO	1020.032	436.490	1456.522
GLENN	123.367	17.238	140.606
HUMBOLDT	101.531	41.927	143.458
IMPERIAL	392.218	71.025	463.243
INYO	50.043	7.651	57.694
KERN	2258.718	431.844	2690.562
KINGS	301.615	83.224	384.839
LAKE	51.309	21.269	72.577
LASSEN	57.595	27.880	85.475
LOS ANGELES	3697.063	2519.275	6216.337
MADERA	381.000	78.859	459.859
MARIN	70.781	47.883	118.664
MARIPOSA	8.616	5.659	14.275
MENDOCINO	87.226	33.503	120.728
MERCED	781.895	117.285	899.180
MODOC	15.753	9.173	24.926
MONO	35.308	5.336	40.644
MONTEREY	385.342	116.737	502.079
NAPA	69.310	31.272	100.582
NEVADA	145.219	38.906	184.125
ORANGE	1079.886	766.790	1846.676
PLACER	456.686	155.985	612.670
PLUMAS	18.968	11.866	30.834
RIVERSIDE	3075.401	765.069	3840.470
SACRAMENTO	899.241	550.734	1449.976
SAN BENITO	87.545	25.013	112.558
SAN BERNARDINO	3287.430	696.901	3984.331
SAN DIEGO	1489.170	704.611	2193.781
SAN FRANCISCO	37.534	72.759	110.294
SAN JOAQUIN	1500.485	371.761	1872.246
SAN LUIS OBISPO	259.161	88.862	348.023
SAN MATEO	218.890	95.325	314.215
SANTA BARBARA	231.580	67.387	298.967
SANTA CLARA	553.236	375.621	928.857
SANTA CRUZ	63.734	42.941	106.674
SHASTA	320.542	86.989	407.531
SIERRA	14.564	4.228	18.792
SISKIYOU	173.503	26.897	200.400
SOLANO	412.549	107.540	520.089
SONOMA	228.831	143.295	372.127
STANISLAUS	534.596	254.239	788.835
SUTTER	73.169	23.840	97.009
TEHAMA	180.224	30.397	210.621
TRINITY	14.535	4.442	18.977
TULARE	703.576	251.685	955.261
TUOLUMNE	30.354	18.039	48.393
VENTURA	312.912	180.992	493.904
YOLO	406.498	79.076	485.574
YUBA	78.768	37.253	116.021
TOTAL	28575.043	11019.807	39594.850