

# ***Private Industry Partners Technologies Synopses***



safety, simplicity, and savings

Prepared by  
Oak Ridge National Laboratory  
for the  
U.S. Department of Transportation  
Federal Highway Administration

September 1997



U.S. Department  
of Transportation  
Federal Highway  
Administration

Publication No. FHWA-SA-97-114

## **NOTICE**

This publication is disseminated under the sponsorship of the Department of Transportation in the interest of information exchange. The report does not constitute a standard, specification, or regulation. The United States Government does not endorse products or manufacturers. Trade or manufactures' names appear in the publication only because they are considered essential to the object of this document.

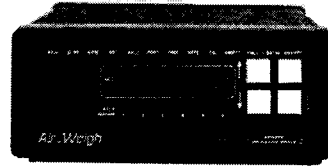
## TABLE OF CONTENTS

AIR-WEIGH SCALES.....	1
ALCOHOL SENSORS INTERNATIONAL, LTD. ....	2
ALK ASSOCIATES, INC. ....	3
AMERICAN MOBILE SATELLITE. ....	4
AMP, INC.....	5
AMTECH CORPORATION.....	6
ANDREW CORPORATION.....	7
ARMATRON INTERNATIONAL/ECHOVISION. ....	8
ATKINS TECHNICAL, INC.....	9
BRAK CHEK LTD.....	10
BREG INTERNATIONAL.....	11
CAPS LOGISTICS.....	12
CIE-TECH INC. ....	13
COLLISION AVOIDANCE SYSTEMS, INC. ....	14
COMPCARE SERVICES.....	15
CONTROL MODULE, INC.....	16
DAT SERVICES.....	17
DATA ENTRY SYSTEMS.....	18
EATON CORPORATION, TRUCK COMPONENTS OPERATIONS.....	19
EATON CORPORATION, TRUCKING INFORMATION SERVICES.....	20
ECCO ELECTRONIC CONTROLS CO.....	21
EVALUATION SYSTEMS INC. ....	22
FORD MOTOR COMPANY.....	23
GENERAL ELECTRODYNAMICS CORP. ....	24
GOODYEAR TIRE AND RUBBER COMPANY.....	25

<b>HICKLIN ENGINEERING .....</b>	<b>26</b>
<b>HIGHWAY MASTER, L.P.....</b>	<b>27</b>
<b>HUGHES TRANSPORTATION MANAGEMENT SYSTEMS .....</b>	<b>28</b>
<b>HUNTER ENGINEERING .....</b>	<b>29</b>
<b>INFINITY SYSTEMS, INC. ....</b>	<b>30</b>
<b>INFORMATION SOFTWARE, INC.....</b>	<b>31</b>
<b>INTERNATIONAL ROAD DYNAMICS, INC. ....</b>	<b>32</b>
<b>J.J. KELLER &amp; ASSOCIATES, INC. ....</b>	<b>33</b>
<b>KLEINSCHMIDT INC. ....</b>	<b>34</b>
<b>LIGHTSTONE GROUP .....</b>	<b>35</b>
<b>LINK MANUFACTURING LTD. ....</b>	<b>36</b>
<b>NATIONAL SEATING .....</b>	<b>37</b>
<b>ORBCOMM .....</b>	<b>38</b>
<b>PERCEPTICS CORPORATION.....</b>	<b>39</b>
<b>QUALCOMM INC. ....</b>	<b>40</b>
<b>RADIX CORPORATION.....</b>	<b>41</b>
<b>ROCKWELL .....</b>	<b>42</b>
<b>ROCKWELL WABCO VEHICLE CONTROL SYSTEMS .....</b>	<b>43</b>
<b>SEI INFORMATION TECHNOLOGY .....</b>	<b>44</b>
<b>SPRAGUE PRUTSMAN, INC. ....</b>	<b>45</b>
<b>STC TECHNOLOGIES .....</b>	<b>46</b>
<b>SURFACE SYSTEMS, INC. (SSI).....</b>	<b>47</b>
<b>SYNERGISTIC SYSTEMS, INC. ....</b>	<b>48</b>
<b>TOM MCLEOD SOFTWARE CORPORATION .....</b>	<b>49</b>
<b>ULTRA-VIEW TECHNOLOGY, INC.....</b>	<b>50</b>



**Company Name:** Air-Weigh Scales



**Product(s):** Air-Weigh: On-board electronic scales

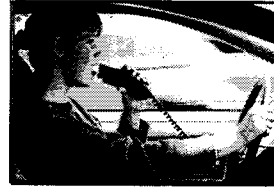
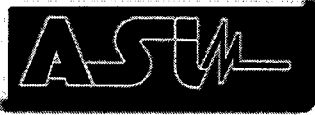
**Description:** The Air-Weigh on-board scale converts truck and trailer air-spring air pressure to an accurate weight display. The scale determines how much weight per pound of air pressure a suspension is supporting by comparing empty and loaded vehicle weights with the air pressure required to support those weights. Once calibrated, the scale will display the on-the-ground weight of each axle group to within 200 to 300 lbs. of an accurate, platform scale. To some extent, accuracy depends on weighing on a flat and level surface and the physical characteristics of the air suspension system itself.

The Air-Weigh scale receives power and communicates with the ComLink RSP over the truck's existing 7-pin disconnect socket.

**For More Information Call:** 800-938-2500

**For More Information FAX:** 541-342-3307

**Internet Address:** [www.air-weigh.com](http://www.air-weigh.com)



**Company Name:** Alcohol Sensors International, Ltd.

**Product(s):** SENS-O-LOCK - Breath Alcohol Ignition Interlock Device

**Description:** SENS-O-LOCK is a breath alcohol analyzer that is designed for use in a vehicle. Once installed, SENS-O-LOCK requires that a breath sample be given before the vehicle can be started. If a safe breath is provided, SENS-O-LOCK will allow the driver to start the vehicle. If SENS-O-LOCK detects an unacceptable alcohol level, the vehicle will not start. Once the vehicle is on the road, a rolling retest is conducted at a random time interval to assure that the driver doesn't drink while driving. If a retest is ignored or failed, the lights will flash and the horn will beep continuously until the vehicle is pulled off the road and the engine is turned off.

**For More Information Call:** 888-STOP-DWI

**For More Information FAX:** 516-342-1550

**Internet Address:** [www.asil.com](http://www.asil.com)



**Company Name:** ALK Associates, Inc.

**Product(s):** PC\*MILER and PC\*FUELTAX - Routing, mileage, and fuel tax software

**Description:** PC\*MILER generates point-to-point mileages, routes, and driving instructions over the United States, Canadian, and Mexican highway systems. PC\*MILER will calculate an unlimited number of mileages and routes on a single personal computer or a network installation.

PC\*MILER calculates point-to-point mileages for an origin-destination pair of locations with unlimited stop-off points. PC\*MILER provides leg and cumulative mileages, time and cost estimates, a state-by-state mileage summary, and Practical, Shortest, National Network, or Toll Discouraged mileages over the entire North American system of truck-usable highways.

PC\*FUELTAX that can eliminate the manual data entry involved in fuel tax reporting. The import features gives carriers the ability to directly convert information from various fuel services, such as Comdata and NTS, into data that can be used in the fuel reporting function. Such information as: truck number, gallons purchased, where purchased, when purchased, odometer reading and even trip number, can be captured and imported into PC\*FUELTAX --provided, of course, that the data has first been captured by the fuel purchasing system.

**For More Information Call:** 800-377-6453

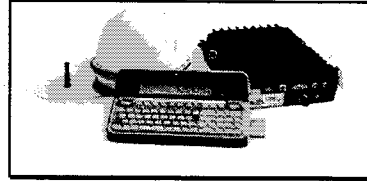
**For More Information FAX:** 609-252-8108

**Internet Address:** [www.alk.com](http://www.alk.com)

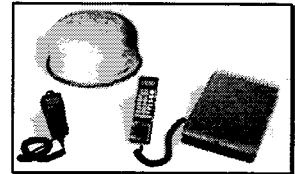


**American Mobile Satellite Corporation**

**Company Name: American Mobile Satellite**



**Product(s): Multi-Mode Mobile Communications**



**Description:** The Multi-Mode Communications System uses integrated satellite- and land-based technologies to provide commercial trucking fleets with two-way data communications and global vehicle location services, no matter where their vehicles are traveling throughout North America. Land-based technology ensures communications while vehicles travel in urban areas where tall buildings may block the line of sight to the satellite; satellite technology ensures the availability of communications while vehicles travel through desert, mountain or prairie, where land-based coverage is non-existent.

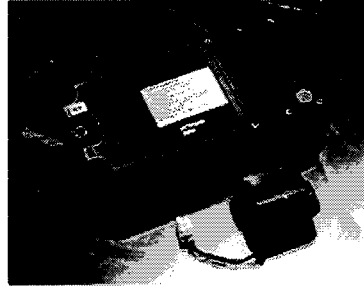
SKYCELL Plus Service is a digital broadcast dispatch capability. This feature allows a dispatcher to open a single voice channel and communicate with another worker, a group of workers or an entire fleet up to 10,000 mobile users, all at the touch of a button. This flexibility enables the dispatcher to obtain and convey critical information such as ETA's, rerouting of shipments or even lifesaving information, immediately and efficiently.

**For More Information Call: 800-872-6222**

**For More Information FAX: 703-758-6239**

**Internet Address: [www.skycell.com](http://www.skycell.com)**





**Company Name:** Amp, Inc.

**Product(s):** Shock and Temperature Recorder

**Description:** The Shockwriter 3000 is a portable shock and temperature recorder designed to monitor environmental conditions during transportation, including truck, air, sea or rail.

Shockwriter combines a precise electronic three axis accelerometer, to measure shock in any direction and one electronic thermometer (thermistor) for temperature monitoring. The electronic sensor information is processed through a microprocessor to measure and record detailed information about the magnitude of the shock event as well as temperature extremes. The Shockwriter stores all events with commensurate date and time in permanent memory which can be easily retrieved with a DOS-compatible personal computer. The recorded information could be used to support a claim that your product may have been mishandled. Since the date and time of the event is recorded in the Shockwriter's permanent memory, it can establish who had custody of the product at the time of the shock or temperature event. It can also eliminate costly start-ups of machinery and equipment that may have been inconspicuously damaged, by alerting you or your customer to possible damage prior to startup.

**For More Information Call:** 610-650-1500

**For More Information FAX:** 610-650-1509

**Internet Address:** [www.amp.com/sensors](http://www.amp.com/sensors)



**Company Name:** Amtech Corporation

**Product(s):** Intellitag Reader, Transponder, rf Antenna

**Description:** Using Amtech's wireless technology, commercial, government and private fleets can collect, track, monitor and report data for operations and maintenance. Hands-free, paperless applications allow fueling, weighing and gate access operations to be easily and securely automated. The wireless systems capture data automatically and accurately during the normal course of business. First, the tag is attached to all equipment. Readers are installed at strategic points, such as gates and fuel lanes, to read the tags. Information can then be automatically relayed to an in-house PC, network, or database system.

**For More Information Call:** 800-923-4824

**For More Information FAX:** 972-733-6699

**Internet Address:** [www.amtech.com](http://www.amtech.com)



**Company Name:** Andrew Corporation

**Product(s):** Communications Equipment, Services, and Systems

**Description:** Andrew Corporation is a global designer, manufacturer, and supplier of communications equipment, services, and systems. Andrew products and expertise are found in communications systems throughout the world, including wireless and distributed communications, land mobile radio, cellular and personal communications, broadcast, radar, navigation, and computer connectivity and networking.

**For More Information Call:** 708-349-3300

**For More Information FAX:** 708-873-8282

**Internet Address:** [www.andrew.com](http://www.andrew.com)



**Company Name:** Armatron International/Echovision

**Product(s):** Obstacle Detection System

**Description:** The ECHOVISION rear obstacle detection system eliminates the tractor to trailer cable connection using infrared (IR), wireless communication. The wireless communication system has the advantages of reduced installation cost (approximately 1/2 hour) and no additional burden on the driver to connect and disconnect the system. The driver only has to execute his normal hook-up of the J560 power connector and trailer air lines and the rig is ready to roll.

The ECHOVISION wireless communication system has a trailer subsystem and a tractor subsystem. The trailer subsystem consists of two sensor modules, a control module and a small IR transmitter module. The tractor subsystem consists of a small IR receiver and a smart display module. The Trailer Subsystem operates whenever power is applied to the trailer. During operation the subsystem performs a self test, checks for obstacles and then formulates a status word that is transmitted to the tractor via the IR transmitter. The status word defines the location of any detected obstacle and the pass/fail results of the self test. This routine repeats continuously as long as power is applied to the trailer.

**For More Information Call:** 617-321-2300

**For More Information FAX:** 617-321-2309

**Internet Address:** [armatron@aol.com](mailto:armatron@aol.com)

## PM MINDER



**Company Name:** Atkins Technical, Inc.

**Product(s):** Preventative Maintenance Minder

**Description:** The PM Minder can monitor up to five components simultaneously, such as hours run, miles or kilometers, and fuel or fluid levels. Flashing alarm lights for each channel are activated when a component being monitored reaches the desired PM interval. Data can then be downloaded to an IBM®-compatible PC and viewed, graphed, or stored. Time is saved by eliminating manual checking and recording, and human error can be eliminated. The PM Minder can be mounted inside or outside a truck cab, trailer, or reefer unit and is designed specifically to withstand weather, vibrations, and other rigors of the road.

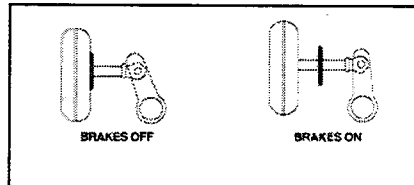
**For More Information Call:** 352-378-5555

**For More Information FAX:** 352-335-6736

**Internet Address:** [marketing@atkins.com](mailto:marketing@atkins.com)

# EZ Chek™

**Company Name:** Brak Chek Ltd



**Product(s):** Air Brake Adjustment Indicators

**Description:** EZ Chek™ goes on the air chamber push rod at the location where the Department of Transportation inspectors put their chalk mark to check your brake adjustment.

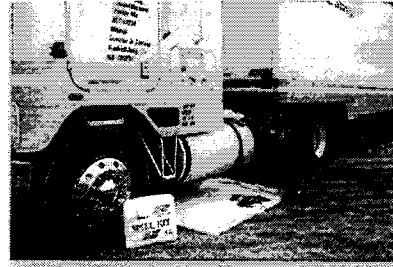
- Helps to promote the EQUAL adjustment of all brakes
- Allows you to quickly see if your brakes are over or under adjusted
- Makes sure your automatic slack adjusters are working properly
- Helps you make brake adjustments faster and more accurately
- Promotes early detection of brake parts failure
- Allows you to quickly check you brake adjustment anytime you are stopped and the brakes are applied

**For More Information Call:** 800-642-6364

**For More Information FAX:** 800-642-6361



**Company Name:** BREG International



**Product(s):** Spill Containment Products

**Description:** The compact size (18"x15"x5") of the standard spill kits make them adaptable for any transportation application. They are lightweight and fit easily in autos, truck, tractors, heavy equipment, airplanes and boats. They clean up spills on land or water, absorbing from 21 quarts to 25 gallons of oil, depending upon the type of kit used.

BREG also offers a "Build-Your-Own" feature that contains only the sorbents that the customer specifies.

**For More Information Call:** 800-433-1013

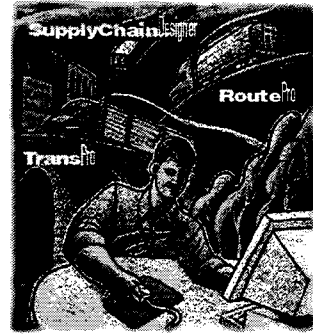
**For More Information FAX:** 540-371-9393

**Internet Address:** [breg@bregintl.com](mailto:breg@bregintl.com)



**Company Name:** CAPS Logistics

**Product(s):** RoutePro, TransPro, and Supply Chain Designer - Logistics for facilities and route planning software



**Description:** RoutePro's Windows NT/95 user interface and extensive use of pull down menus, tabbed forms, visual icons, wizards and drag-and-drop functionality make RoutePro very easy to use. Simply point-and-click to:

- setup your routing system
- integrate RoutePro with your existing systems
- build and edit routes
- dispatch vehicles
- generate reports and results

TransPro optimizes shipping decisions including:

- freight consolidation
- mode and carrier selection
- routing of private, contract and common carriers
- pooled consolidation/cross-docking
- continuous moves and backhauls
- shipment scheduling

Supply Chain Designer allows the user to quickly model a distribution network to examine it for potential savings and improvements. It includes optimization tools including CPLEX™ (mixed integer/linear programming solver). Other features include model setup wizards and a scenario manager which allows the user to define, analyze, and compare the effects of different business practices.

Supply Chain Designer answers questions such as:

- What is the optimal number, location, and size of my facilities?
- Are my customers being supplied through the right distribution channels?
- Am I balancing transportation and manufacturing costs with inventory costs?
- Am I striking the right balance between cost and service?
- Am I using the right suppliers?
- How can I best allocate supply chain resources to demand?

**For More Information Call:** 770-432-9955

**For More Information FAX:** 770-438-9630

**Internet Address:** [www.caps.com](http://www.caps.com)



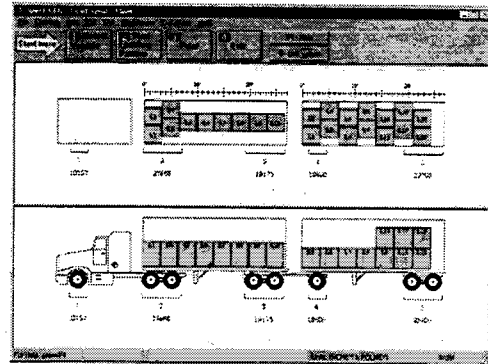
# CIE-Tech Inc.

**Company Name:** CIE-TECH Inc.

**Product(s):** X-PERT Axle Load Calculation Software

**Description:** Load Xpert is a axle load calculation software designed to run under Microsoft Windows 3.1, 3.11 and 95. Using this software, a vehicle can be properly loaded and thereby increase the payload and avoid any costly infractions to the weight regulations.

Load Xpert can be used in a wide-range of applications starting from vehicle design and specification to preparation of standard loading patterns (often needed for ISO 9000). It is also very useful for dealers and sales personnel.



Several versions of Load Xpert have been tailored for major user groups in the trucking industry:

**Load Xpert - Pro** This is the most flexible and comprehensive software for axle load distribution calculation. Tailored for designers and manufacturers.

**Load Xpert - Tanker** This software is specifically designed for Tank Vehicles with or without compartments and includes all features of Load Xpert - Pro.

**Load Xpert - Fleet** This version of Load Xpert provides step-by-step guidance to find instantly optimal load position for carrying maximum payload. Tailored for fleet operators, load dispatchers and drivers with on-board computer.

**Load Xpert - Tanker Fleet** This version of Load Xpert provides step-by-step guidance to find instantly for each product carried, the fill volume in compartments that will maximize the payload. Tailored for fleet operators, load dispatchers and drivers with on-board computer.

**Load Xpert - Owner Operator** This version of Load Xpert guides step-by-step through the creation of a vehicle and in finding optimal load placement for carrying maximum payload. Also useful for truck/trailer dealers and sales personnel.

**Load Xpert - Heavy Haul** This software is specifically designed for Heavy Haul operations with jeep dollies, drop deck trailers, booster axles, etc. It also includes all features of Load Xpert - Pro.

**LX-CAD** This is a small stand-alone drafting software which allows the user to draw the desired look of a unit. The new look created are saved in a Look File that can be read by Load Xpert

**For More Information Call:** 514-923-1458

**For More Information FAX:** 514-443-0031

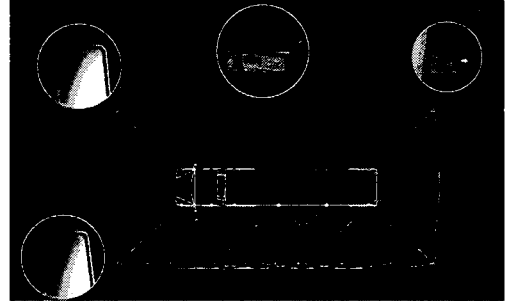
**Internet Address:** [www3.sympatico.ca/cie-tech](http://www3.sympatico.ca/cie-tech)



## **Blind-Sight™**

**Company Name:** Collision Avoidance Systems, Inc.

**Product(s):** Blindsight Collision Avoidance System



**Description:** The Blind-Sight system combines computer enhanced, state-of-the-art hardware and software technology that gives the driver the best defense for preventing avoidable accidents. Blind-Sight installs intelligence into a truck and displays it to the driver in a way that works in concert with his normal driving habits. The Blind-Sight system consists of Intelligent Sensors, mounted in locations around the truck, giving the driver the equivalent of electronic eyes to help watch the front, back, and sides. The "brain" of the system is the Command Module, mounted in the cab. This microprocessor-based unit computes all the sensor information and informs the driver through audible alarms and visual displays which are easy to read.

The Blind-Sight Intelligent Mirror system consists of driver side mirror electronics and passenger side mirror electronics that mount to your mirrors. Object detection information is communicated to the driver through numeric LEDs and warning lights. The display electronics of the Intelligent Mirror system can be customized to fit within the existing mirror system of most trucks (optional).

**For More Information Call:** 800-780-9062

**For More Information FAX:** 770-475-8322

**Internet Address:** [www.blindsight.com](http://www.blindsight.com)



**Company Name: Compcare Services**

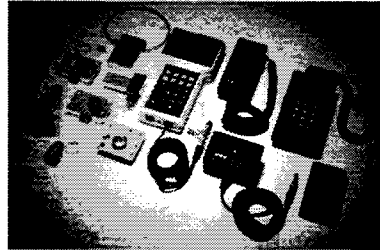
**Product(s): Fleet Management Software and Support**

**Description:** Specializes in transportation software and support. Products list includes: accounting, broker option, container/intermodal, dispatch, document imaging, driver logs, driver settlement, EDI, equipment permits, fuel tax, interlining, payroll, point-to-point mileage, rating, and vehicle maintenance.

**For More Information Call: 562-981-2330**

**For More Information FAX: 562-981-2342**

**Company Name:** Control Module, Inc.



**Product(s):** Electronic Seal/Pad Lock

**Description:** The SecurLock™ product line from Control Module, Inc. is an advanced Electro-mechanical Lock System that represents the next generation of security technology. This product line includes a variety of models, each with unique applications. SecurLocks™ are direct replacements for existing mechanical locks, requiring no modifications in the field. All SecurLock™ products meet or exceed high levels of durability and environmental specifications.

**For More Information Call:** 860-745-2433

**For More Information FAX:** 860-741-6064

**Internet Address:** [jwbianco@controlmod.com](mailto:jwbianco@controlmod.com)



**Company Name:** DAT Services



**Product(s):** Load Posting - Provides service that links terminals to satellites, databases, etc.

**Description:** DAT Services is an information source for the trucking industry. DAT provides freight-matching, transportation data, prepaid calling cards and electronic advertising services to carriers, intermediaries, truck stops and professional drivers throughout North America. It hosts a database consisting of freight loads and empty trucks and distributes that information in a multitude of ways; phone, fax, PC/modem, and satellite. DAT is a conduit for brokers and carriers who use it to do freight matching.

**For More Information Call:** 800-547-5417

**For More Information FAX:** 503-526-6454

**Internet Address:** [www.dat.com](http://www.dat.com)



**Company Name:** Data Entry Systems

**Product(s):** MiniWriter: Electronic Clipboard



**Description:** MiniWriter combines the benefits of the computer with the advantages of the traditional pen, paper, and clipboard. Using standard ball point pen and paper forms, its pressure-sensitive digitizing surface interprets pen strokes and converts them into ASCII text. MiniWriter stores captured data for both immediate and periodic upload into your computer system.

**For More Information Call:** 205-430-3023

**For More Information FAX:** 205-430-0989

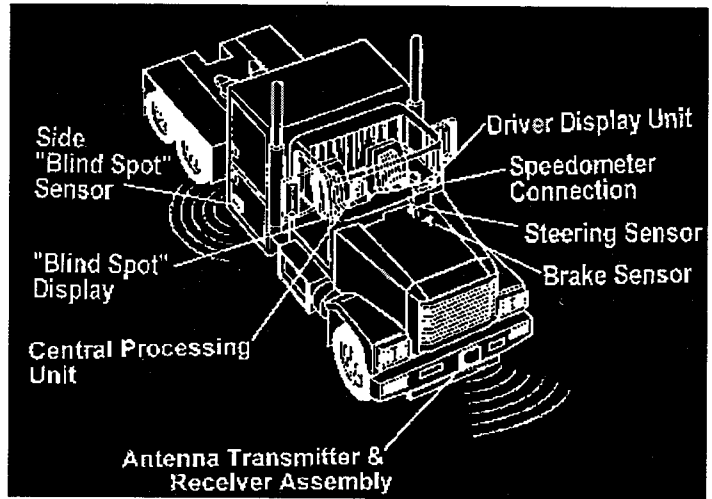
**Internet Address:** [deshsv@aol.com](mailto:deshsv@aol.com)



**Company Name:** Eaton Corporation,  
Truck Components Operations

**Product(s):** Vorad Collision Warning  
System

**Description:** The Eaton VORAD CWS is an advanced technology radar system. It alerts drivers - as much as three seconds in advance - to the potential hazards that are the root cause of accidents, such as stopped or slow-moving vehicles ahead, following too closely, and vehicles alongside your truck hidden from view.



CWS can be a vital instrument at nighttime and in conditions of fog, dust, rain or snow because it allows your drivers to actually "see through" the conditions, making their job much safer. Constantly vigilant, it's an invaluable aid to help your drivers stay more alert.

**For More Information Call:** 800-867-2332

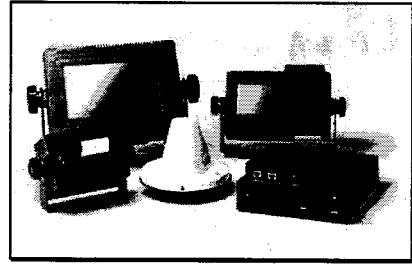
**For More Information FAX:** 616-383-5550

**Internet Address:** [www.truck.eaton.com](http://www.truck.eaton.com)



**Company Name:** Eaton Corporation, Trucking Information Services

**Product(s):** Fleetadvisor



**Description:** Fleet Advisor is an integrated truck fleet communications, logistics and management system, consisting of hardware and software in an On-Board System in the truck and Ground Support System at the fleet operations center. Fleet Advisor improves the efficiency and productivity of truck fleets in proven, measurable ways, using truck-to base communications, real-time routing and utilization, improved maintenance scheduling and complete driver records and reports. Eaton tailors a Fleet Advisor system for the unique needs of a particular private or for-hire fleet, using a combination of five Fleet Advisor components: Basic Advisor, Maintenance Advisor, Tracking Advisor, Activity Advisor, and Resource Advisor.

**For More Information Call:** 800-423-1525

**For More Information FAX:** 910-712-2111

**Internet Address:** [www.truck.eaton.com/advisor](http://www.truck.eaton.com/advisor)





Electronic Controls Co.

**Company Name:** ECCO Electronic Controls Company



**Product(s):** Scan Obstacle Detection System

**Description:** SCAN is an ultrasonic sensory device designed to assist drivers in safely changing lanes, backing up or docking. Comprising the system are three primary components—the smart sensor, the driver alert module, and the main power harness. SCAN's smart sensors feature state-of-the-art transducers which detect vehicles or objects near the truck's perimeter. The software interprets the signal received and transmits the data along a single wire to a display module mounted inside the cab. The module visibly and audibly alerts drivers to obstacles within SCAN's detection zone. The smart sensors perform self-diagnostics and report any malfunctions. They are also designed to monitor ambient temperatures and will activate a heating element to prevent buildup of ice and snow during winter use.

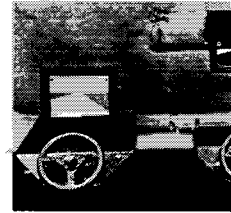
**For More Information Call:** 800-635-5900

**For More Information FAX:** 800-688-3226

**Internet Address:** [www.eccolink.com](http://www.eccolink.com)



**Company Name:** Evaluation Systems Inc.



**Product(s):** SMART TRUK®, ReadyShift® I, and ReadyShift® II Driver Evaluation System

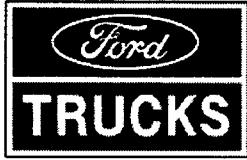
**Description:** The ReadyShift® I in-the-office system is composed of a dedicated computer, a roadway display, a printer, and specially designed steering wheel and foot throttle devices. The system's software provides the testing display and captures various performance measures. The steering and speed control functions have small variations built in that require constant attention on the part of the operator while taking the test. Once trained on the system, each driver establishes a personal baseline for purposes of measuring daily performance standards. The driver receives immediate performance feedback at the conclusion of the test.

ReadyShift® II in-the-cab system uses the vehicle's input devices, steering wheel, throttle and turn signal to administer the test. The computer is housed in a box mounted under the dashboard. The highway video display is mounted on the back of the truck's sun visor. The computer is linked, via cable, to optical encoder sensing devices located in the steering wheel column and throttle and to a switch in the turn signal.

The SMART TRUK® system allows real-time monitoring of driver performance. It is an information feedback system designed to alert the driver to his/her erratic performance which may be caused by fatigue or other impairment factors. The current usage of the ReadyShift® II computer requires the driver to stop the truck and test at scheduled intervals though out the day. This current methodology alerts the driver and management so that unfit drivers can be proactively removed from service.

**For More Information Call:** 619-443-0123

**For More Information FAX:** 619-443-6824



**Company Name:** Ford Motor Company

**Product(s):** Ford AT9522 Tractor



**Description:**

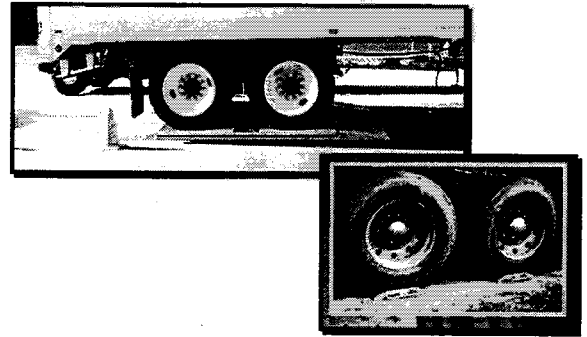
Wheelbase:	WB=262	CA=189	AF=50	OAL=369
Engine:	Cat 3406E Electronic 475 HP 2100 RPM			
Transmission:	Inquired DSO Transmission			
Rear Axle:	40,000 lb Rockwell AT-40-145P Steel 1S			
Ratio:	Axle Ratio 3.90			
Front Axle:	12,000 lb Front Axle			
Chassis Weight (LBS):	10,553-Front	8,260-Rear	18,813-Total**	
GVWR:	12,350-Front	40,000-Rear	N/A Component	
	20,000-Frame		52,350-Total	

\*\*Weight does not include driver and fuel.

**For More Information Call:** 800-FORD-1st

**For More Information FAX:** 800-367-3178

**Internet Address:** [www.ezonline.com/fordtruck.html](http://www.ezonline.com/fordtruck.html)



**Company Name:** General ElectroDynamics Corp.

**Product(s):** Portable Weigh Scales

**Description:** The MD700 heavy duty portable axle scales have a capacity of 60,000 pounds for tandem axle vehicles. The MD1100 has a capacity of 90,000 pounds for triple axle vehicles.

The electronic portable wheel loader weigher is designed to weigh accurately in rough environments on a variety of surfaces including dirt, gravel, tar, cement, and off-level surfaces. They are lightweight (40 pounds) and have a capacity to 20,000 pounds.

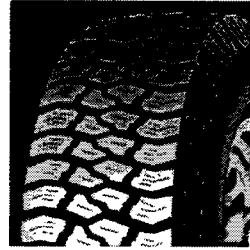
**For More Information Call:** 800-551-6038

**For More Information FAX:** 817-572-0373

**Internet Address:** [www.gecscales.com](http://www.gecscales.com)



**Company Name:** Goodyear Tire and Rubber Company



**Product(s):** Tire Optimization Software

**Description:** A program offered by Goodyear on CD-ROM, TVC-II is an encyclopedia of truck tire and vehicle information, according to the manufacturer, which allows users to plan purchases, analyze data and control costs. With TVC II equipment managers can enter information about vehicle usage to learn which tire is the best choice for the fleet's application, and the system is capable of calculating numbers on a fleet's tractors, trailers, dollies, fuel costs, average miles-per-gallon, tire mounting and dismounting costs, rotation schedules, tread wear rates and retreads. Fleet managers can calculate the number of casings needed for retreading or new tires each year, and they can electronically analyze tire usage on a fleet of trucks of different makes as well as tires from several manufacturers. Photos and specifications on leading Class 6, 7 and 8 domestically built trucks are included in the program, along with pictures and technical data on Goodyear's complete commercial tire and retread lines as well as tire products from most other manufacturers. The program also creates graphs and charts for use in analysis of various fleet tire scenarios.

In addition to TVC II, the CD-ROM also incorporates Goodyear's Tire/Vehicle Tracking System and the Goodyear Radial Truck Tire Service Manual, as well as information about the company's tires. Goodyear's commercial truck tire Web site will carry updates of the program so users can keep their CD-ROM system current simply by clicking on the "download" icon provided on the screen.

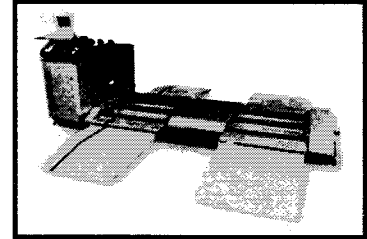
**For More Information Call:** 330-796-8365

**For More Information FAX:** 330-796-3369

**Internet Address:** [www.goodyear.com](http://www.goodyear.com)



**Company Name:** Hicklin Engineering



**Product(s):** Roller Brake Dynamometer

**Description:** Using the Roller Brake Dynamometer (RBD) the user can diagnose: brake imbalance, oil soaked lining, dragging brakes, cracked drums, broken spring brakes, worn or tight end bearings, air system problems, deficient parking brake force, and tractor/trailer incompatibility in a matter of minutes.

The portable RBD can be towed behind a half-ton vehicle, providing easy movement between maintenance shops, terminals, or other inspection sites.

**For More Information Call:** 515-254-1654

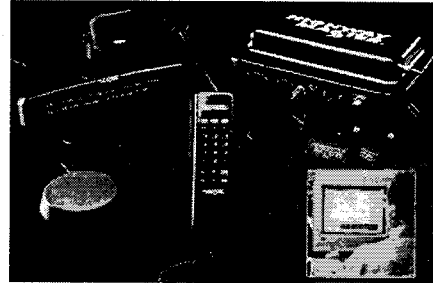
**For More Information FAX:** 515-254-1656

**Internet Address:** [www.hinklin.com](http://www.hinklin.com)

# HIGHWAY MASTER

**Company Name:** Highway Master, L.P.

**Product(s):** Mobile Communications and Information Systems



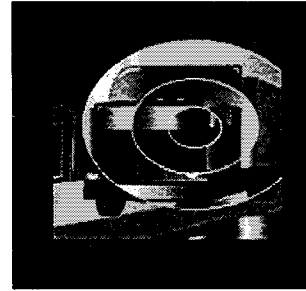
**Description:** The HighwayMaster system offers the combination of cellular, GPS, and state-of-the-art technology. The mobile communication and information system offers both voice and data capabilities. Drivers may place a hands-free voice call by issuing a simple voice command. Dispatchers may place a voice call to the truck anytime a truck is in an active cell. The Personal Call feature allows trucking companies to provide their drivers with the use of a cellular phone while billing the calls directly to the driver's calling card. Drivers may also send and receive data messages by issuing voice commands or by pressing buttons. In addition to voice and data capabilities, the unit can also provide an actual position report by using the Global Positioning System. Other features include: Exception Reporting, On-Screen Plotting and Mapping, Load Screen, Truck Log Report, Fleet Mileage Report, On-Time Report, System Integration, and Engine Performance Data Collection.

**For More Information Call:** 800-493-3022

**For More Information FAX:** 972-250-0182

**Internet Address:** [www.highwaymaster.com](http://www.highwaymaster.com)

**HUGHES**



**Company Name:** Hughes Transportation Management Systems

**Product(s):** Transponders and Communications Equipment

**Description:** Smart highways are here. In pilot programs in several North American cities, vehicle-to-roadside communication (VRC) systems are being used for electronic toll collection, weigh station pre-clearance, local traveler information, in-vehicle messaging and route guidance systems.

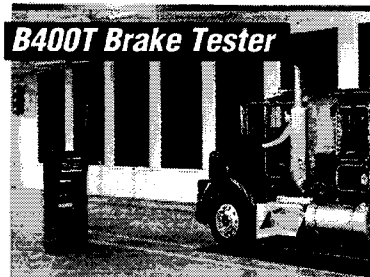
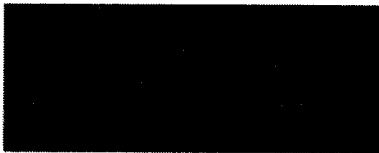
Based on dedicated short range communications (DSRC), VRC systems integrate in-vehicle transponder technology with a roadside transmitter and antenna to provide two-way communication between the roadside and VRC-compatible vehicles. Hughes Transportation Management Systems, for example, supplies roadside transmitters that communicate with in-vehicle transponders produced by Delco Electronics Corp. Once a vehicle is in range of the roadside equipment, the transmitter sends a message to the vehicle's transponder, which fits below the rearview mirror. This information is relayed to the driver either by an audible tone, visual LEDs, a voice output option, a traditional instrument panel display or a heads-up display system.

Currently, VRC technology is being installed primarily for electronic toll collection and commercial trucking operations. Instead of stopping to deposit tolls or pick up tickets, drivers using VRC can drive through an electronic toll station and have their fares billed to their homes.

**For More Information Call:** 800-494-5509

**For More Information FAX:** 714-446-2290





**Company Name:** Hunter Engineering

**Product(s):** Computerized Brake Tester/Sideslip Tester

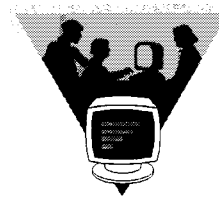
**Description:** Hunter's B400T utilizes microprocessor-based technology to measure braking forces for every brake on a vehicle: tandem-axle tractors; tractors and semi-trailers; buses; and two-axle vehicles, including passenger cars and light trucks.

The operator drives the vehicle onto a set of plates mounted into the shop floor and applies the brakes. Precision gauges in the plates automatically measure braking forces along with dynamic weight and send digital data to the computer. As each pair of axles is tested, results are displayed on the 19" color monitor. Results are automatically stored and can be printed out at the end of the test.

**For More Information Call:** 314-731-3020

**For More Information FAX:** 314-731-1776

**Internet Address:** [www.hunter.com](http://www.hunter.com)



**Company Name:** Infinity Systems, Inc.

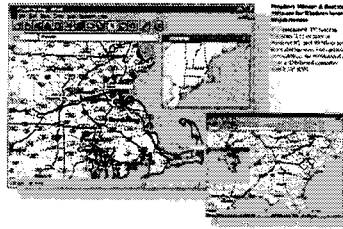
**Product(s):** LOGMATE™ Software: Automated logbook reporting system

**Description:** LOGMATE™ software helps keep track of drivers' DOT compliances on a weekly, monthly, and yearly basis. LOGMATE™ will also list, on demand, a drivers' next-day available hours. It is menu driven and will allow the user to quickly record 25 different logbook violations, to help decrease costly drivers' infractions. It can maintain comprehensive records for any accidents a driver may be involved in. LOGMATE™ is IBM-PC compatible.

**For More Information Call:** 616-392-8442

**For More Information FAX:** 616-392-6274

**Internet Address:** [jet@macatawa.org](mailto:jet@macatawa.org)



**Company Name:** Information Software, Inc.

**Product(s):** Prophecy Mileage and Routing System Software

**Description:** Prophecy is a Windows-based fully integrated mileage and routing decision support system. It routes to hundreds of thousands of cities, towns, zip codes, intersections, truck stops, and user-defined points quickly and easily. Prophecy can calculate both short-distance rating mileages and detailed practical routings, depending upon the needs of your company's transportation operation.

**Features**

- Short-distance or practical mileages
- Hundreds of thousands of driving locations
- Cities, zip codes, highway junctions, truckstops all on-line
- Optimize routes by quickest driving time or shortest distance
- Set vehicle heights and other commercial restrictions
- No transaction fees or lookup restrictions
- Optional integration with other transportation software
- Complete routing reports with route and exit numbers

**For More Information Call:** 800-776-6706

**For More Information FAX:** 860-243-2619

**Internet Address:** [www.mile.com](http://www.mile.com)



**Company Name:** International Road Dynamics, Inc.

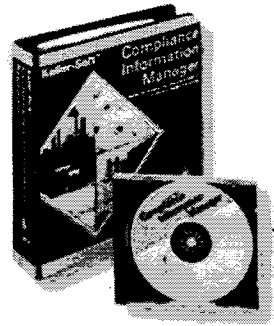
**Product(s):** Weigh-In-Motion Systems

**Description:** IRD's Integrated Vehicle Monitoring and Inspections Systems combine Weigh-In-Motion (WIM) and Automatic Vehicle Identification (AVI) technologies to weigh and identify vehicles entering a weigh station or port-of-entry facility. The system incorporates WIM scales, AVI, information signs and static scales to efficiently process high truck volumes at inspection facilities. The WIM and AVI Systems automatically prescreen vehicles based on weight compliance and credentials to significantly reduce truck delays.

**For More Information Call:** 306-653-6600

**For More Information FAX:** 306-242-5599

**Internet Address:** [www.ird.ca](http://www.ird.ca)



**Company Name:** J.J. Keller & Associates, Inc.

**Product(s):** DOT Safety and DOT HazMat Compliance Software

**Description:** Get fast, easy access to compliance information covering the three major federal regulatory agencies with this Windows-based CD-ROM software that brings together DOT, OSHA, and EPA regulations and guidance in one program.

Keller-Soft Compliance Information Manager features more than 250 E-Z Explanations for key regulatory areas, including: Hazardous Materials Transportation, Motor Carrier Safety, Workplace Safety, Construction Safety, Mine Safety, NIOSH, EEOC, Hazardous Waste, Toxic Substances, Clean Air, Clean Water, Right To Know, and more. Plus, you'll have direct access to special reports, proposals, regulation preambles, Q & As, and other technical and agency-related documents.

**For More Information Call:** 800-558-5011

**For More Information FAX:** 414-727-7516

**Internet Address:** [www.jjkeller.com](http://www.jjkeller.com)

# **KLEINSCHMIDT INC.**

**Company Name:** Kleinschmidt Inc.

**Product(s):** EDI - Network Services

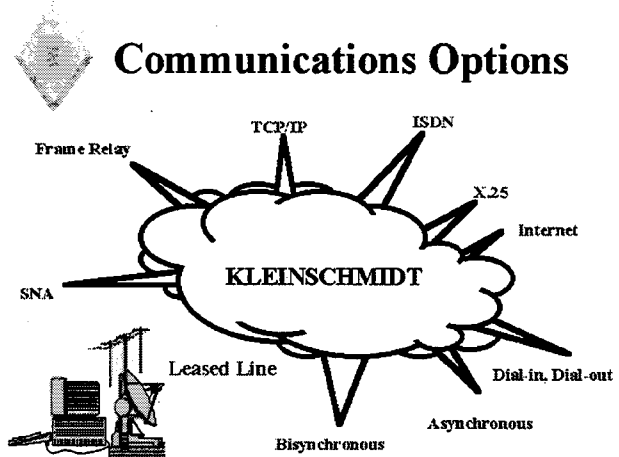
**Description:** Kleinschmidt provides full Electronic Commerce (EC) and Electronic Data Interchange (EDI) services.

The EDI services allow the interchange of documents, in any format, with any domestic or international firm directly or via interconnection with other networks. This flexibility can provide a seamless, fully integrated solution for all companies.

**For More Information Call:** 847-945-1000

**For More Information FAX:** 847-945-4619

**Internet Address:** [www.kleinschmidt.com](http://www.kleinschmidt.com)

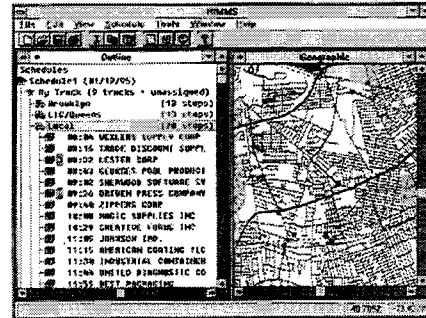




**Lightstone Group**

**Company Name: Lightstone Group**

**Product(s): RIMMS: Scheduling and Routing Support and Software**



**Description:** RIMMS is the decision support system used to make short and long term decisions about your trucking operations. RIMMS combines sophisticated scheduling, mapping, and information management tools in a single program to:

- Decide if a new load should be accepted knowing the costs, profit potential, and even other opportunities you might be passing up.
- Determine what truck (and driver) should be assigned to which load.
- Improve customer service by providing more accurate and timely delivery scheduling.
- Reduce the labor associated with creating and changing schedules.
- Lower mileage by more effective and accurate scheduling.
- Increase the potential for finding loads for empty trip legs.
- Avoid mistakes which result in drivers exceeding driving limits or "away from home" maximums.
- Decrease driver turnover.
- Make more effective use of owner-operated resources.
- Pay less overtime to complete schedules.
- Determine the best route between two areas.

**For More Information Call: 516-294-7505**

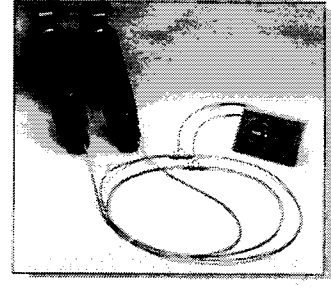
**For More Information FAX: 516-294-5543**

**Internet Address: [www.lightstone.com](http://www.lightstone.com)**



**Company Name:** Link Manufacturing Ltd.

**Product(s):** Ride Command Air Suspension System



**Description:** Ride Command is a driver-controlled ride system. With a Ride Command upgrade the driver can adapt immediately - from the driver's seat - to the constantly changing demands of the road, load, and weather conditions, from uneven roadways to wind, rain, ice, and snow.

**For More Information Call:** 800-222-6283

**For More Information FAX:** 712-722-4876

**Internet Address:** [www.linkmfg.com](http://www.linkmfg.com)



**Company Name: National Seating**

**Product(s): Truck Seats**

**Description:**

*Features*

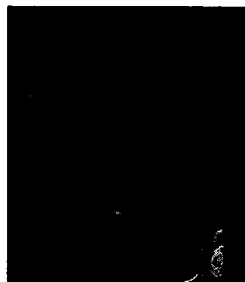
- Patented Dual-Ride™ Air Spring
- Flex-Ride™ Seat Cushion
- Contoured Cushions
- Adjustable Power Air Lumbar Support
- Fore and Aft Seat Movement
- Seat Cushion Front Tilt and Length Adjustment
- Drop Seam Sewing
- Seat Ride Adjustment
- Seat Back Angle Adjustment
- Three Position Rear Cushion Adjustment
- Built-in Chugger Snubber with Positive Lock-Out
- Standard Intermediate-Bac Design

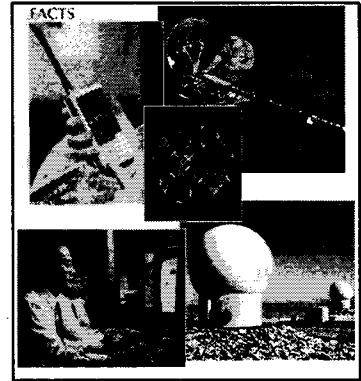
*Options*

- Adjustable Headrest
- Power Back and Cushion Bolsters
- Adjustable Armrests
- Vinyl Shroud/Bellows
- Three Position Front Cushion Adjustment
- Three-Chamber Power Air Lumbar

**For More Information Call: 423-884-6651**

**For More Information FAX: 423-884-6166**





**Company Name:** ORBCOMM

**Product(s):** Tracking/Monitoring Systems

**Description:** The ORBCOMM System user can compose, transmit, and receive messages on very small hand-held devices or devices integrated with palmtop computers, anywhere in the world. With a constellation of up to 36 LEO satellites and terrestrial facilities, the U.S. user will have a satellite in view continuously over 95% of the time and will have to wait less than two minutes the rest of the time.

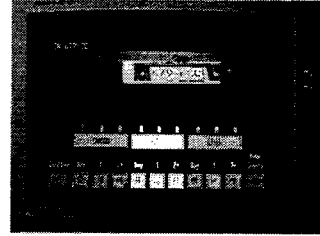
ORBCOMM's geolocation component allows you to maximize revenue and decrease costs by telling you the location and availability of all your tracker equipment. ORBCOMM, connected to sensors that monitor the compressor, allows quick response to problems, and helps shippers avoid hefty damage claims. ORBCOMM tells you where your containers are so you can find them quickly.

**For More Information Call:** 800-ORBCOMM

**For More Information FAX:** 703-406-3504

**Internet Address:** [www.orbcomm.net](http://www.orbcomm.net)

**perceptics**



**Company Name:** Perceptics Corporation

**Product(s):** License Plate Reader and Automatic Container Identification

**Description:** Perceptics License Plate Reader (LPR) locates and identifies a vehicle's plate number, state, province, and country of origin in milliseconds. And it does so in all weather conditions, at highway speeds, 24 hours a day, 7 days a week.

Applications include:

- Border Crossings
- Emissions Testing
- Commercial Vehicle Operations
- Automatic Toll Enforcement
- Registration Enforcement
- Revenue Collection
- Access Control & Security

**For More Information Call:** 800-448-8544

**For More Information FAX:** 423-966-9330

**Internet Address:** [www.perceptics.com](http://www.perceptics.com)



**Company Name:** QUALCOMM Inc.

**Product(s):** Advanced Mobile Satellite  
Communications System



**Description:** OmniTRACS is an interactive information management system that includes two-way mobile communications, satellite tracking, and fleet management software.

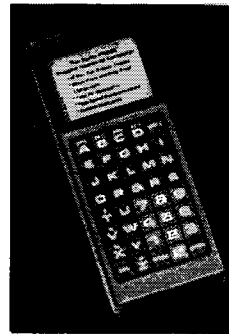
The OmniTRACS system consists of three major elements - integrated mobile hardware, network management services and application software.

The OmniTRACS system does more than transmit data from place to place. It manages the data flow, turning it into valuable information useful throughout an entire operation. From communications and tracking, to maintenance and performance monitoring, to state mileage reporting and driver e-mail, QUALCOMM offers a full suite of application software and a comprehensive library of integration links.

**For More Information Call:** 800-34-TRACS

**For More Information FAX:** 619-658-1578

**Internet Address:** [www.qualcomm.com](http://www.qualcomm.com)



**Company Name:** RADIX Corporation

**Product(s):** Portable Computing Devices, Automated MCSAP Inspection System

**Description:** The Radix AIS is a highly configurable system enabling MCSAP agencies to determine the most appropriate method of prompting the inspectors through commercial vehicle data. Inspectors follow and respond to prompts for carrier, driver, vehicle, and hazardous material information. There is also provision for PCS, ICC, DOT, and state numbers as well as MCSAP inspection levels.

At the end of the inspector's shift, or when it is convenient, the unit is attached to a Radix loader/charger to upload the handheld computer's inspection data to the agency's personal computer. This data upload may be accomplished through a direct link to the PC, or via modem over voice grade telephone lines.

**For More Information Call:** 800-723-6754

**For More Information FAX:** 801-328-3401

**Internet Address:** [www.radix-intl.com](http://www.radix-intl.com)



**Company Name:** Rockwell

**Product(s):** Tripmaster On-Board Computer

**Description:** The Rockwell DataTrax/GPS combines functions of the Tripmaster on-board recorder with a built-in Global Positioning System (GPS) receiver. DataTrax/GPS can act as a stand-alone recorder of vehicle data or be used with a variety of input and display devices, including alphanumeric wired and portable keypads, pen-based computers and touch-screen units. The system uses GPS to add the date, time and vehicle position to traditional OBC data. A key feature is the ability to accomplish hands-free recording of state line crossings and accurate mileage tracking by jurisdiction for fuel tax reporting. Fleets can also incorporate DataTrax/GPS data with popular route analysis and planning software.

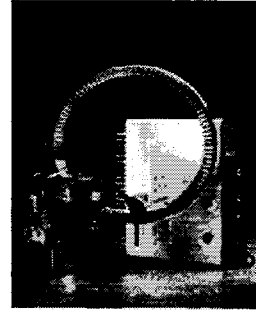
**For More Information Call:** 800-997-2595

**For More Information FAX:** 319-295-8969

**Internet Address:** [www.rockwell.com](http://www.rockwell.com)

# **Rockwell WABCO**

## *Vehicle Control Systems*



**Company Name:** Rockwell WABCO Vehicle Control Systems

**Product(s):** Anti-lock Brake Systems

**Description:** Rockwell WABCO's next generation ABS for trucks, tractors and buses was introduced in late 1995. The new system builds upon all of the proven benefits and technology of the company's previous system, in an even more compact, reliable and easy to install package.

Benefits include:

- Easier installation and enhanced reliability accomplished through a simplified wiring harness and a new, integrated valve package, coded electrical connectors and integration of electrical relays into the electronic control unit. By redesigning the system for simplicity, the number of major components has been reduced by 30 percent.
- Cab- and frame-mounted electronic control unit (ECU) designs for flexibility in packaging and manufacturing.
- Various system configurations available for virtually any application.
- Helps provide controlled braking which enhances vehicle stability, driver control and stable stopping during emergency situations or adverse conditions.
- Helps prevent wheel lock-up, spin-out and loss of steering control, which helps the driver avoid accidents and reduce damage to cargo and equipment.
- Can stabilize or even lower insurance costs through the potential for reduced accidents.

### **Easy-Stop Trailer ABS**

- Easy-Stop ABS is the company's latest generation of trailer ABS. The system can result in substantial savings for motor carriers.
- Easy-Stop features numerous advantages including light weight, compact size, fewer parts and easy diagnostics and installation.

Additional benefits include:

- Helps increase vehicle braking control and stability which can reduce tire flatspotting, helps avoid accidents by reducing trailer swing, lowers maintenance costs, reduces downtime and helps stabilize insurance costs.
- Easier installation and enhanced reliability accomplished through a simplified wiring harness and a new, integrated valve packaged, coded electrical connectors and integration of electrical relays into the ECU.
- Simple installation on virtually any single or tandem axle trailer configuration. Installation is also available on existing non-ABS equipped trailers through Rockwell WABCO's trailer retrofit program.
- Easy to maintain because it requires no routine maintenance, features standard, easily-accessible blink code diagnostics and it is compatible with the industry standard diagnostic tool MPSI Pro-Link 9000.

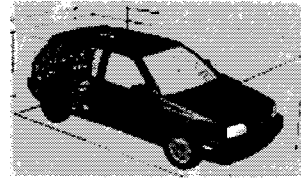
**For More Information Call:** 800-535-5560

**For More Information FAX:** 248-435-5580

**Internet Address:** [www.heavyvehicle.rockwell.com](http://www.heavyvehicle.rockwell.com)



**Company Name:** SEI Information Technology/NavTech



**Product(s):** Routing and Travel Software

**Description:** SEI EnRoute® is a database engine that provides remote, wireless route guidance and travel information -- anytime, anywhere.

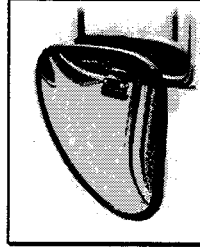
SEI EnRoute® contains dozens of categories of points-of-interest, and can direct end users to any number of nearby businesses, services, or specific addresses. SEI EnRoute® provides turn-by-turn driving instructions to selected destinations -- whether its the nearest available ATM or a preferred hotel -- and helps users explore types of businesses within any given geographic area. SEI EnRoute® also generates lists of points-of-interest that match specific requirements and directs end users to selected destinations. SEI EnRoute® works in partnership with third-party vendors to provide access to a fully integrated suite of traveler information services.

**For More Information Call:** 312-251-5120

**For More Information FAX:** 312-251-5130

**Internet Address:** [www.sei-it.com](http://www.sei-it.com)





**Company Name: Sprague Prutsmann, Inc.**

**Product(s): "Sweet Spot" Aspherical Convex Mirror and Road Temperature Warning System**

**Description:**

The Sweet Spot Aspherical Convex Mirror features:

- Improved Distance Judgement
- Improved Image Size
- Increased Useable Field of View
- Heated or Non-heated Versions

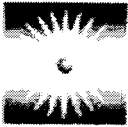
RoadWatch gives an accurate read-out of the actual road surface temperature, warning drivers of potential icy road conditions or potential high temperatures dangerous to tire performance and wear.

The latest generation of RoadWatch includes these features:

- A digital read-out for air temperature, in addition to road surface temperature.
- Improved display graphics.
- A "caution" light, which is displayed when the road surface temperature is 35 degrees F. or below.
- An audible beeper, which signals when the road surface lowers to 35 degrees F.
- Improved shielding from radio interference.
- An easy to install, mirror mounted sensor head.
- Centigrade or Fahrenheit display scales.

**For More Information Call: 800-521-5074**

**For More Information FAX: 616-947-3428**



**STC Technologies, Inc.**

DEFINITION TECHNOLOGIES FOR THE HEARD WORLDWIDE

**Company Name:** STC Technologies

**Product(s):** On-Site Alcohol Detection

**Description:** Q.E.D.®A150 Saliva Alcohol Test for use at the worksite.

**For More Information Call:** 610-882-1820

**For More Information FAX:** 610-882-1830

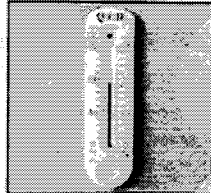
**Internet Address:** [qedsaliva@aol.com](mailto:qedsaliva@aol.com)



1. Swab mouth to collect saliva.



2. Insert collector into test.

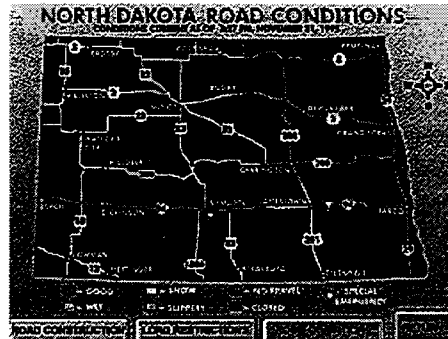


3. Read color bar.



**Company Name: Surface Systems, Inc. (SSI)**

**Product(s): Road/Runway Weather Information Systems**



**Description:** SSI is a full service weather information provider for transportation, utilities, construction, landscaping and more. SSI remote sensing equipment and specialized weather forecasting and information services help customers make timely and effective decisions in any weather.

Weather service options include:

- National Interstate Truck Summary
- Trucker Weather Watch Maps
- TravelCAST® - Interstate Truck Discussion
- Additional TravelCAST® for Fixed Routes
- TravelCAST® Interstate Maps
- TravelCAST® Dataset
- Dispatcher Briefing
- Dispatcher Phone Consultation
- City-Specific Forecasts

**For More Information Call: 800-325-7226**

**For More Information FAX: 314-569-3567**

**Internet Address: [www.ssiweather.com](http://www.ssiweather.com)**



**Company Name:** Synergistic Systems, Inc.

**Product(s):** Dispatch and Dock Operations Software

**Description:** Synergy Cross Dock Tracking prevents misloads and reduces OS&D for the LTL carrier, while improving the efficiency and accuracy of dock personnel.

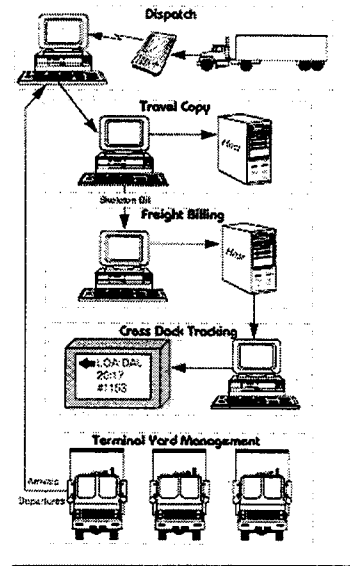
As freight is unloaded, a bar coded Travel Copy or pallet label is scanned by a wall-mount, forklift mount, or hand held mobile data terminal/bar code scanner. The dock worker is directed to the correct loading door for that shipment by the computer display at the door. If an OS&D incident occurs, it is noted in real-time on the mobile data terminal, increasing accountability.

As a trailer is loaded, total weight and cube is calculated, and warnings are generated for overloads and misloads. Special flags for hazardous, freezable, and special handling are noted in the system, preventing fines and damage to freight.

**For More Information Call:** 904-249-0201

**For More Information FAX:** 904-249-8045

**Internet Address:** [www.syn-sys.com](http://www.syn-sys.com)

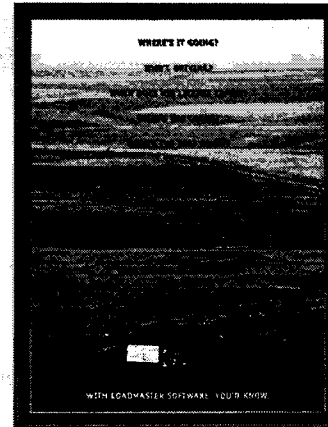




**LoadMaster™**

**Company Name: Tom McLeod Software Corporation**

**Product(s): Comprehensive Transportation Software Design and Installation**



**Description:** Tom McLeod Software Corporation offers a complete computer solution: time tested software, the right computer for the size of a truckline, installation, and training of employees. The company also develops software including:

- The LoadMaster™ Safety package keeps track of biographical data of your drivers.
- The LoadMaster™ Vehicle Maintenance and Inventory Control package is an equipment and maintenance management system based on standards developed by the American Trucking Associations.
- The LoadMaster™ Fuel Interface allows the dispatcher to wire funds directly from the Dispatcher's workstation via popular fuel services such as Comdata, etc.
- The LoadMaster™ package allows direct communication with the various mileage programs.
- The LoadMaster™ Satellite Interfaces allows the tracking of loads in real time across the country, and with two-way communication, allows contact with drivers.
- EDI support provides customer design and implementation based on the requirements of shippers.
- LoadMaster™ Driver Settlement gathers information from many sources including dispatch, billing, fuel tax, and driver advances.
- LoadMaster™ Billing and Accounts Receivable handles needs from printing freight bills to cash receipts entry.
- The LoadMaster™ Dispatch System provides the most current loads and equipment location at a glance.

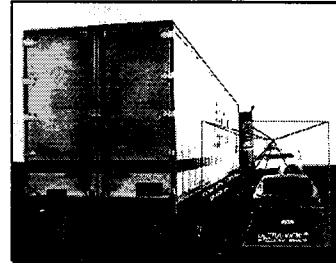
**For More Information Call:** 205-823-5100

**For More Information FAX:** 205-823-0000

**Internet Address:** [www.tmscorp.com](http://www.tmscorp.com)



**Company Name:** Ultra-View Technology, Inc.



**Product(s):** Automatic Mirror Tracking System

**Description:** The Ultra-View mirror system enables drivers to keep visual contact with the side and rear of trailer throughout a turn. This is accomplished by the use of sensors to measure the distance from the rear of the tractor to the front of the trailer. The sensors send this reading to the drivers control box inside the cab. The control box will then process the information and send a signal to the passenger side mirror telling it to turn either left or right, enabling the mirror to follow the side/rear area of the trailer.

**For More Information Call:** 800-610-1811

**For More Information FAX:** 417-863-0320

**Internet Address:** [www.ultraview.com](http://www.ultraview.com)





HTA-30/11-97(1M)QE