

# Montana Border Planning

Facilitating Transportation Across The Northern Border



## Montana Border Transportation Planning

Border transportation planning involves the development of goals, objectives, and strategies for moving people and goods across the U.S.–Canada border. FHWA leads multiple binational stakeholders to collaboratively create safe and effective cross-border transportation.

FHWA also facilitates the development and maintenance of the surface transportation system along the U.S.–Canada border to address existing and anticipated demand for cross border travel and trade while working with federal, state, regional, and local agencies, the private sector, and various stakeholders. In 2016, **157,000 trucks**, **672,000 personal vehicles**, and **1.2 million vehicle passengers** crossed through the **13 Land Ports of Entry (LPOEs)** along Montana's **545 miles of shared border** with the provinces of British Columbia, Alberta, and Saskatchewan.<sup>1</sup>

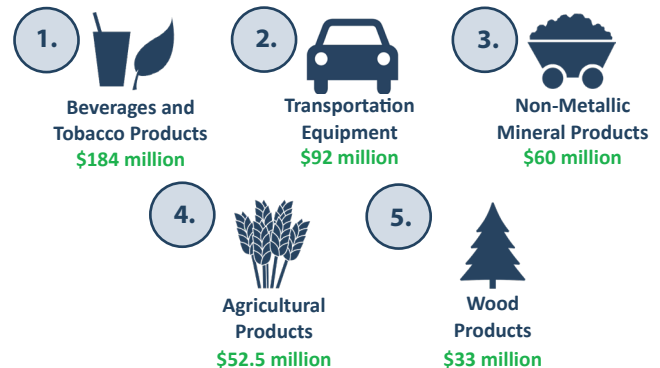


A billboard welcoming travelers to Montana. Source: FHWA Montana Division

## Importance of Montana – Canada Border Transportation to the U.S. Economy

- The Sweetgrass, MT–Coutts, AB LPOE is the **busiest port in Montana**. In 2016, it handled **\$11.1 billion in trade via surface modes**, which was the **ninth-most** of any LPOE along the U.S.–Canada border.<sup>1</sup>
- Many LPOEs in Montana have seen a drastic spike in personal vehicle traffic between 2006 and 2016:
  - **Rooseville, MT–Rooseville, BC: 146%**
  - **Turner, MT–Climax, SK: 96%**
  - **Del Bonita, MT–Del Bonita, AB: 81%**
  - **Scobey, MT–Coronach, SK: 32%**
  - **Willow Creek, MT–Willow Creek, SK: 30%**

## Montana's Top 5 Exports, 2016<sup>3</sup>



## Did You Know?

- Montana is the only state along the U.S.–Canada border to share a boundary with **three Canadian provinces**.
- The Chief Mountain LPOE is **one of only two ports on the U.S.–Canada border** that is closed during the winter, along with Poker Creek, AK–Little Gold Creek, YK.
- The U.S. and Canada have **six joint border crossing stations** along their shared border. Montana features two of them: **Sweetgrass–Coutts** and **Turner–Climax**.
- In 1996, the Scobey, MT–Coronach, SK LPOE became the **world's first fully-automated port of entry**.



### Citations

1. Bureau of Transportation Statistics

2. International Boundary Commission

3. International Trade Administration



February 2018

### For more information, contact:

Tricia Harr, Team Leader  
FHWA Office of Planning, Environment & Realty  
(202) 366-9214, [tricia.harr@dot.gov](mailto:tricia.harr@dot.gov)