

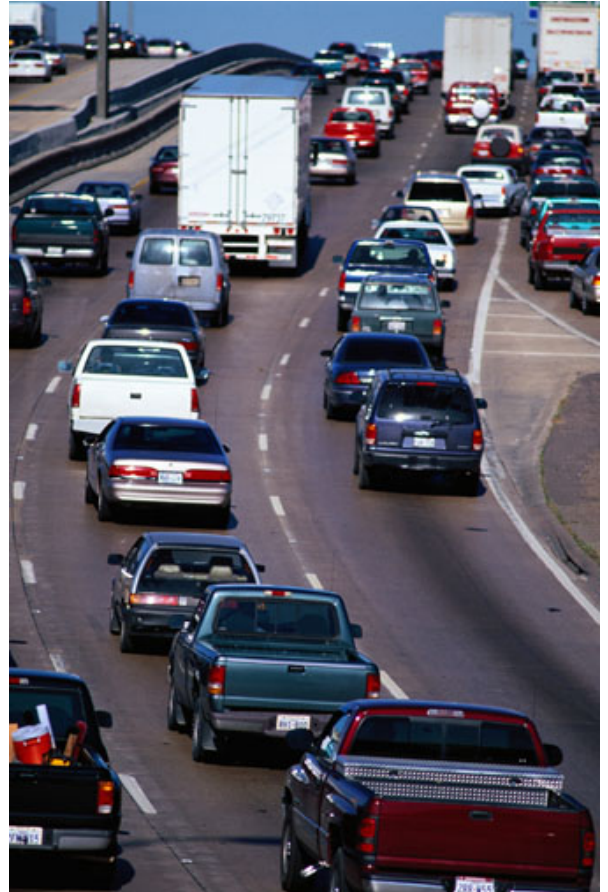
# TRANSPORTATION PERFORMANCE MANAGEMENT

The Federal Highway Administration (FHWA) has finalized six interrelated performance rulemakings to implement the TPM framework established by the Moving Ahead for Progress in the 21<sup>st</sup> Century Act (MAP-21) and the Fixing America's Surface Transportation (FAST) Act.

Collectively, the rules address challenges facing the U.S. transportation system, including:

- improving safety
- maintaining infrastructure condition
- reducing traffic congestion
- improving efficiency of the system and freight movement
- protecting the environment and
- reducing delays in project delivery.

The rules establish national performance measures; State Departments of Transportation (DOTs)



and metropolitan planning organizations (MPOs) will establish targets for applicable measures. New and existing plans will document the strategies and investments used to achieve the targets; progress toward the targets will be reported through new and existing mechanisms.

Learn more at the FHWA TPM web site:

<http://www.fhwa.dot.gov/tpm/>



# Freight Reliability Measure



**WHAT:** Measurement of travel time reliability on the Interstate System (Truck Travel Time Reliability (TTTR) Index). Read the final rule in the [Federal Register](#) [82 FR 5970 (January 18, 2017)].

**WHO:** State DOTs and MPOs.

**WHY:** Through MAP-21, Congress required FHWA to establish measures to assess performance in 12 areas, including freight movement on the Interstate. The measure considers factors that are unique to this industry, such as the use of the system during all hours of the day and the need to consider more extreme impacts to the system in planning for on-time arrivals. [23 CFR 490.607]

**WHEN:** State DOTs must establish 2- and 4-year targets by **May 20, 2018**. Those targets will be reported in the State's baseline performance period report due by **October 1, 2018**. The State DOTs have the option to adjust 4-year targets in their mid performance period progress report, due **October 1, 2020**.

MPOs must either support the State target or establish their own quantifiable 4-year targets within 180 days of the State target establishment.

**HOW:** Freight movement will be assessed by the TTTR Index. Reporting is divided into five periods: morning peak (6-10 a.m.), midday (10 a.m.-4 p.m.) and afternoon peak (4-8 p.m.) Mondays through Fridays; weekends (6 a.m.-8 p.m.); and overnights for all days (8 p.m.-6 a.m.). The TTTR ratio will be generated by dividing the 95<sup>th</sup> percentile time by the normal time (50<sup>th</sup> percentile) for each segment. The TTTR Index will be generated by multiplying each segment's largest ratio of the five periods by its length, then dividing the sum of all length-weighted segments by the total length of Interstate.

State DOTs and MPOs will have the data they need in FHWA's National Performance Management Research Data Set (NPMRDS) as data set includes truck travel times for the full Interstate System. State DOTs and MPOs may use an equivalent data set if they prefer.

**Note: The FHWA is preparing guidance on how all rules should be implemented.**

