

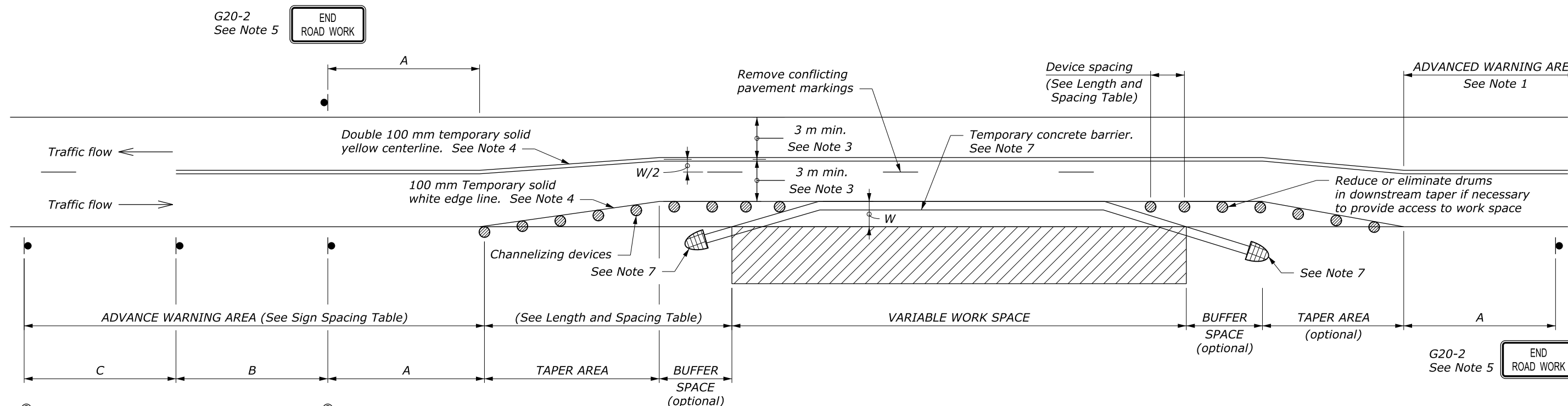
LENGTH AND SPACING TABLE							
APPROACH SPEED*		MINIMUM TAPER LENGTH METER	BUFFER SPACE LENGTH METER	CHANNELIZING DEVICE			WORK ZONE CLEAR ZONE WIDTH METER
				TAPER AREA	BUFFER SPACE	WORK SPACE	
MPH	km/h	SPACING IN METERS					
20	30	Shifting taper formula: $L = \frac{WS^2}{310}$ for $S < 70$ km/h	35	6	12	12	3.0
25	40		45	8	15	15	3.0
30	50		60	9	18	18	3.0
35	55	$L = \frac{WS}{3.2}$ for $S \geq 70$ km/h	75	11	21	21	3.0
40	65		95	12	24	24	4.6
45	70	Where:	110	14	27	27	6.1
50	80	$L$ = Minimum length of taper	130	15	30	30	6.1
55	90	$W$ = Width of offset in meters	150	17	34	34	6.1
60	95	$S$ = Metric equivalent of posted speed limit or 85 percentile speed prior to work in kilometers per hour	175	18	37	37	9.0
65	105		195	20	40	40	9.0
70	115		225	21	43	43	9.0

\* Approach speed based on the regulatory posted speed, not the advisory speed.

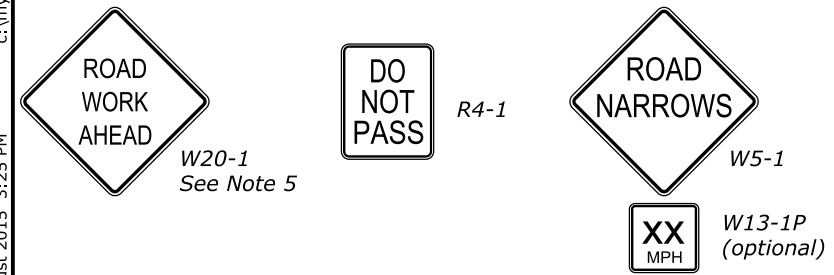
SIGN SPACING TABLE			
ROAD TYPE	DISTANCE BETWEEN SIGNS IN METERS		
	A	B	C
Urban and Rural $\leq 50$ km/h [ $\leq 30$ MPH]	30	30	30
Urban and Rural 60-80 km/h [35-50 MPH]	100	100	100
Rural greater than 80 km/h [50 MPH]	150	150	150
Expressway / Freeway	300	450	800

**NOTE:**

1. Signs are shown for one direction of travel only. Place devices similar to those depicted for the opposite direction of travel.
2. Final location and spacing of signs and devices may be changed to fit field conditions as approved by the CO.
3. For project specific minimum width, refer to Special Contract Requirements, Section 156.
4. If the roadway surface is paved, install temporary pavement markings. If nearest no-passing zone is within 120 m, extend markings to connect zones.
5. If closure is completely within the project limits, eliminate the "ROAD WORK AHEAD" (W20-1) and "END ROAD WORK" (G20-2) signs.
6. Install "PASS WITH CARE" sign (R4-2) at ends of no-passing zone if directed by the CO.
7. Place the barrier according to the AASHTO Roadside Design Guide. Terminate barrier ends outside the work zone clear zone or protect the barrier ends with a crash cushion. Include reflectors on barrier at 7.6 m intervals.
8. Do not allow equipment, materials, or vehicles to be parked or stored in the buffer space.
9. Dimensions without units are millimeters.



c:\myfiles\pw\_production\dms67497\std635-12.dgn [Metric] 4 August 2015 3:25 PM



U.S. DEPARTMENT OF TRANSPORTATION  
FEDERAL HIGHWAY ADMINISTRATION  
FEDERAL LANDS HIGHWAY

METRIC STANDARD  
**TEMPORARY TRAFFIC CONTROL  
PART LANE WIDTH AND  
SHOULDER CLOSURE LAYOUT  
WITH TEMPORARY BARRIER**

STANDARD APPROVED FOR USE 6/2006  
REVISED: 6/2015  
DRAFT: 6/2015

STANDARD  
M635-12

NO SCALE