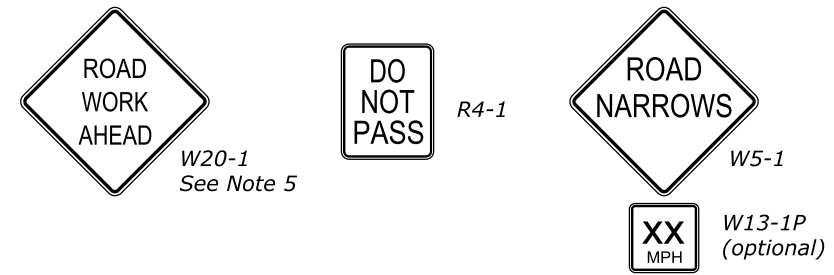
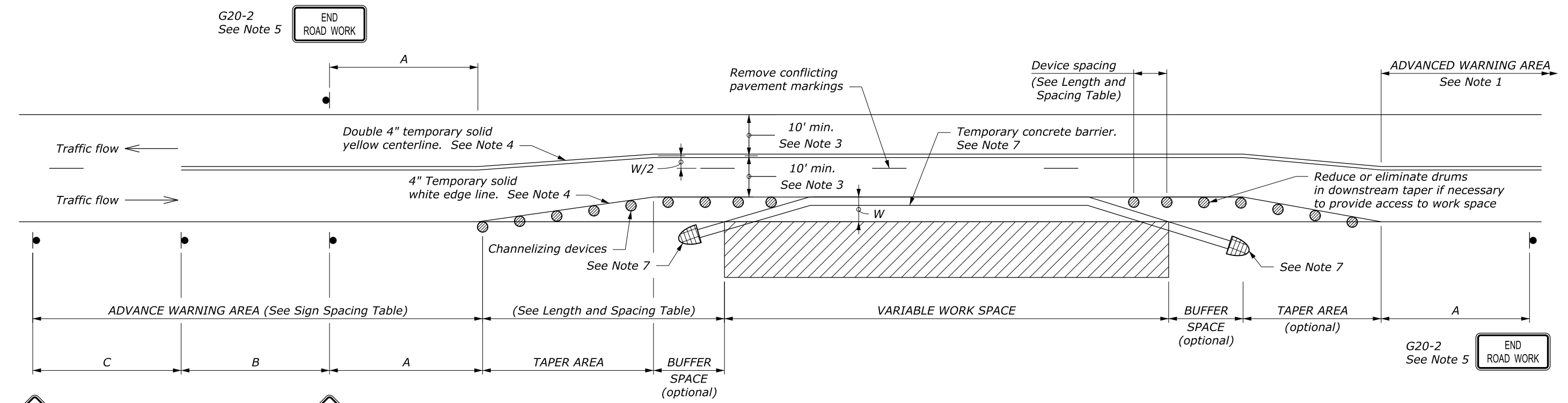


APPROACH SPEED* MPH	MINIMUM TAPER LENGTH FEET	BUFFER SPACE LENGTH FEET	CHANNELIZING DEVICE			WORK ZONE CLEAR ZONE WIDTH FEET
			TAPER AREA	BUFFER SPACE	WORK SPACE	
20	Shifting taper formula:	115	20	40	40	10
25	$L = \frac{WS^2}{120}$ for $S \leq 40$ MPH	155	25	50	50	10
30		200	30	60	60	10
35	$L = \frac{WS}{2}$ for $S \geq 45$ MPH	250	35	70	70	10
40		305	40	80	80	15
45	Where:	360	45	90	90	20
50	$L$ = Minimum length of taper	425	50	100	100	20
55	$W$ = Width of offset in feet	495	55	110	110	20
60	$S$ = Numerical value of posted speed limit or 85 percentile speed prior to work in miles per hour	570	60	120	120	30
65		645	65	130	130	30
70		730	70	140	140	30

ROAD TYPE	DISTANCE BETWEEN SIGNS IN FEET		
	A	B	C
Urban and Rural 30 MPH and less	100	100	100
Urban and Rural 35 MPH to 50 MPH	350	350	350
Rural greater than 50 MPH	500	500	500
Expressway / Freeway	1000	1500	2640

- NOTE:**
1. Signs are shown for one direction of travel only. Place devices similar to those depicted for the opposite direction of travel.
  2. Final location and spacing of signs and devices may be changed to fit field conditions as approved by the CO.
  3. For project specific minimum width, refer to Special Contract Requirements, Section 156.
  4. If the roadway surface is paved, install temporary pavement markings. If nearest no-passing zone is within 400', extend markings to connect zones.
  5. If closure is completely within the project limits, eliminate the "ROAD WORK AHEAD" (W20-1) and "END ROAD WORK" (G20-2) signs.
  6. Install "PASS WITH CARE" sign (R4-2) at ends of no-passing zone if directed by the CO.
  7. Place the barrier according to the AASHTO Roadside Design Guide. Terminate barrier ends outside the work zone clear zone or protect the barrier ends with a crash cushion. Include reflectors on barrier at 25' intervals.
  8. Do not allow equipment, materials, or vehicles to be parked or stored in the buffer space.

\* Approach speed based on the regulatory posted speed, not the advisory speed.



U.S. DEPARTMENT OF TRANSPORTATION  
FEDERAL HIGHWAY ADMINISTRATION  
FEDERAL LANDS HIGHWAY

U.S. CUSTOMARY STANDARD  
**TEMPORARY TRAFFIC CONTROL  
PART LANE WIDTH AND  
SHOULDER CLOSURE LAYOUT  
WITH TEMPORARY BARRIER**

STANDARD APPROVED FOR USE 6/2005  
REVISED: DRAFT: 6/2015

STANDARD  
635-12

NO SCALE