

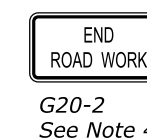
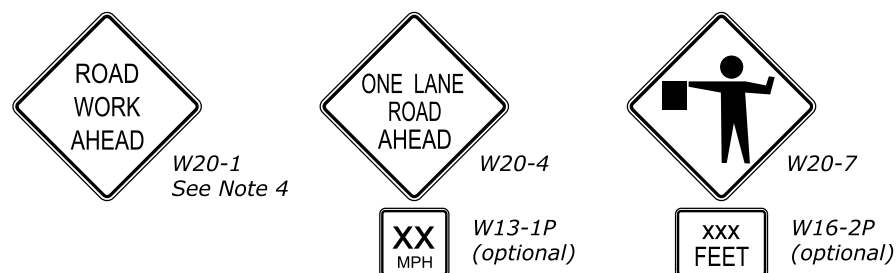
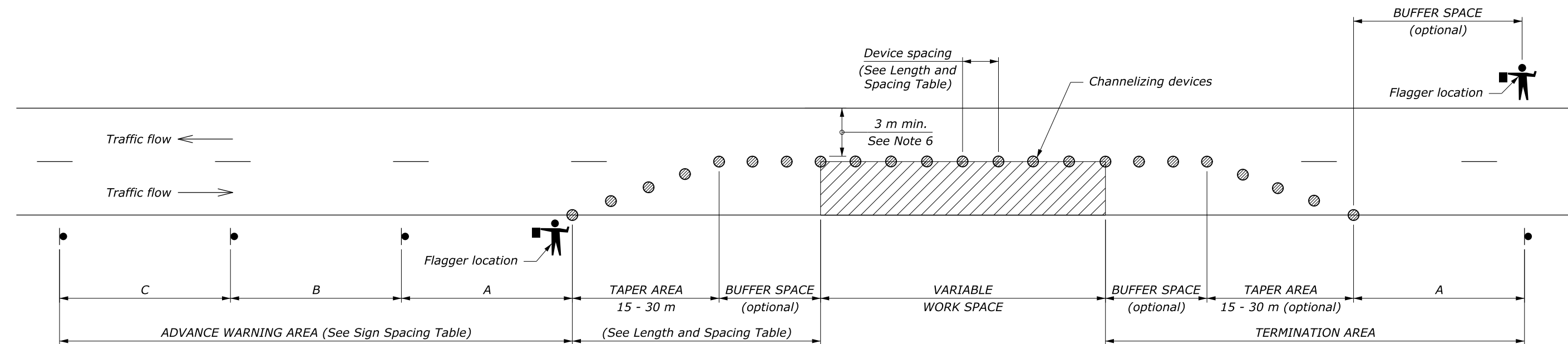
| LENGTH AND SPACING TABLE | | | | | |
|--------------------------|------|------------------------------|---------------------|--------------|------------|
| APPROACH SPEED* | | BUFFER SPACE LENGTH METER | CHANNELIZING DEVICE | | |
| MPH | km/h | | TAPER AREA | BUFFER SPACE | WORK SPACE |
| SPACING IN METERS | | | | | |
| 20 | 30 | 35 | 6 | 12 | 12 |
| 25 | 40 | 45 | 6 | 15 | 15 |
| 30 | 50 | 60 | 6 | 18 | 18 |
| 35 | 55 | 75 | 6 | 21 | 21 |
| 40 | 65 | 95 | 6 | 24 | 24 |
| 45 | 70 | 110 | 6 | 27 | 27 |
| 50 | 80 | 130 | 6 | 30 | 30 |
| 55 | 90 | 150 | 6 | 34 | 34 |
| 60 | 95 | 175 | 6 | 37 | 37 |
| 65 | 105 | 195 | 6 | 40 | 40 |
| 70 | 115 | 225 | 6 | 43 | 43 |

* Approach speed based on the regulatory posted speed, not the advisory speed.

| SIGN SPACING TABLE | | | |
|---|----------------------------------|-----|-----|
| ROAD TYPE | DISTANCE BETWEEN SIGNS IN METERS | | |
| | A | B | C |
| Urban and Rural ≤ 50 km/h [≤ 30 MPH] | 30 | 30 | 30 |
| Urban and Rural 60-80 km/h [35-50 MPH] | 100 | 100 | 100 |
| Rural greater than 80 km/h [50 MPH] | 150 | 150 | 150 |
| Expressway / Freeway | 300 | 450 | 800 |

NOTE:

- Signs are shown for one direction of travel only. Place devices similar to those depicted for the opposite direction of travel.
- Final location and spacing of signs and devices may be changed to fit field conditions as approved by the CO.
- For pilot car operation, mount the PILOT CAR FOLLOW ME (G20-4) sign at a conspicuous location on the rear of vehicle. Prominently display the name of the contractor on the pilot car.
- If closure is completely within the project limits, eliminate the "ROAD WORK AHEAD" (W20-1) and "END ROAD WORK" (G20-2) signs.
- For night time flagging operation, provide floodlighting at flagger stations.
- For project specific minimum width, refer to the Special Contract Requirements, Section 156.
- Do not allow equipment, materials, or vehicles to be parked or stored in the buffer space.



U.S. DEPARTMENT OF TRANSPORTATION
FEDERAL HIGHWAY ADMINISTRATION
FEDERAL LANDS HIGHWAY

METRIC STANDARD

**TEMPORARY TRAFFIC CONTROL
SINGLE LANE CLOSURE LAYOUT
(WITH FLAGGERS)**

| | |
|----------------------------------|--------------------|
| STANDARD APPROVED FOR USE 6/2005 | STANDARD M635-6 |
| REVISED: DRAFT: 8/2013 | |

NO SCALE