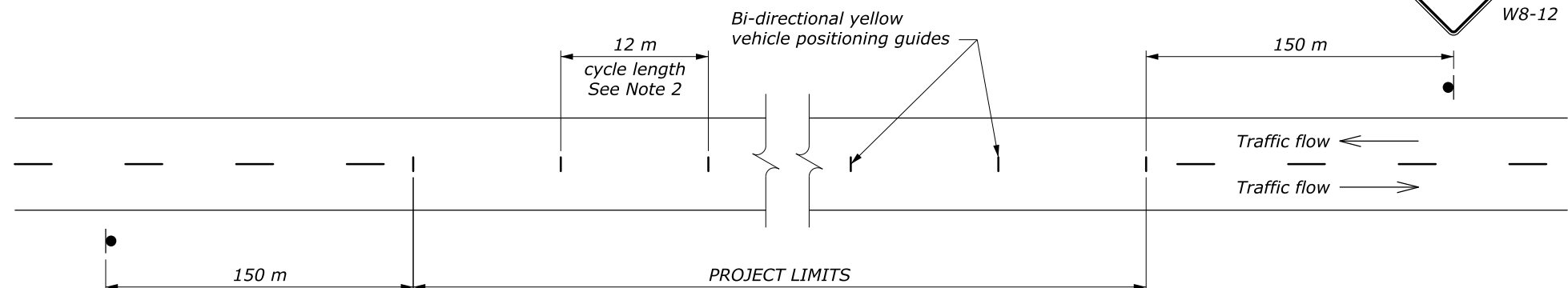
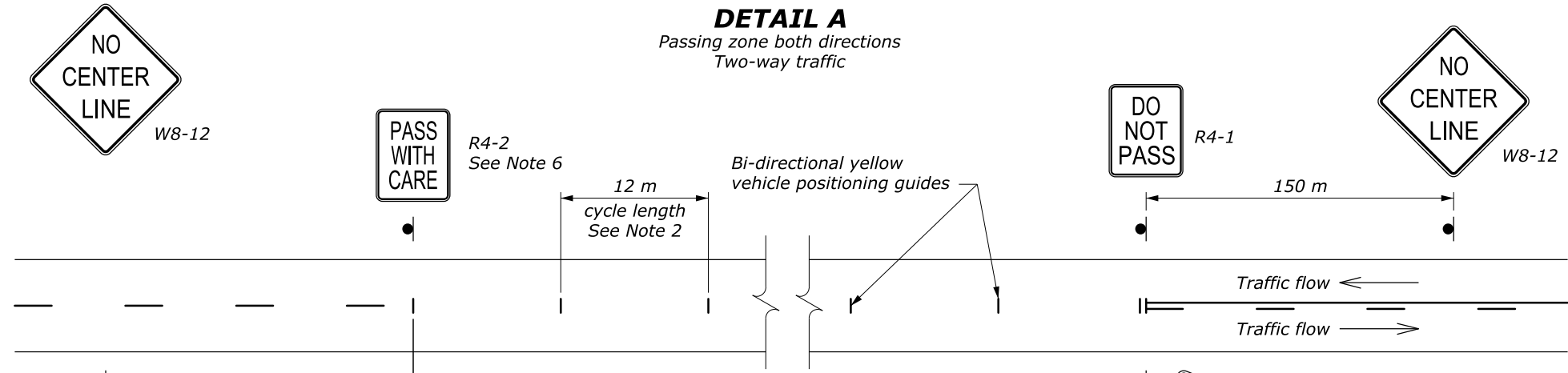


NOTE:

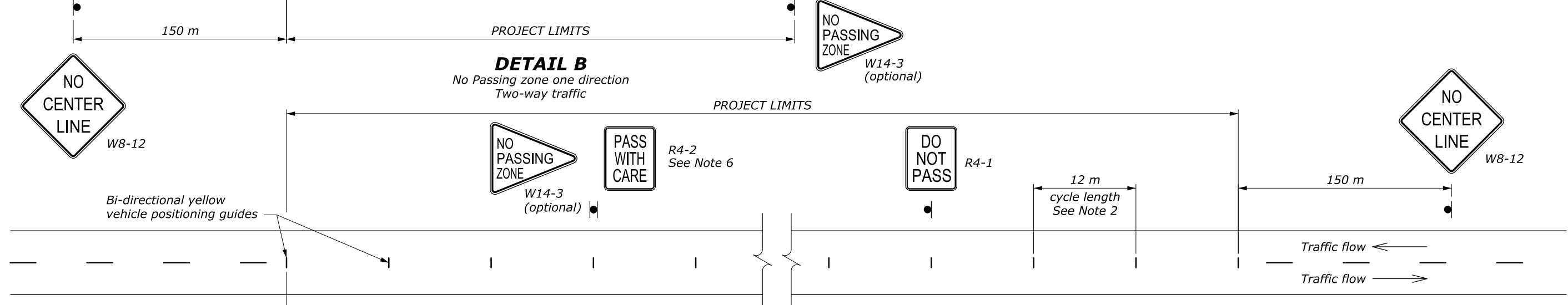
1. The pavement on two- or three-lane roads may remain unmarked up to 14 days when providing signs according to this standard. Optionally use the vehicle positioning guides to provide additional delineation.
2. On curves with radius less than 150 m, reduce cycle length to 6 m.
3. Use permanent markings plan to determine no passing zones for each direction of travel.
4. Repeat R4-1 at 1.5 km intervals.
5. Repeat W8-12 after each major intersection and every 3 km for temporary traffic control zones greater than 5 km long.
6. Use the "PASS WITH CARE" (R4-2) sign at the downstream end of a no-passing zone only if a "DO NOT PASS" (R4-1) sign has been installed at the upstream end of the zone.



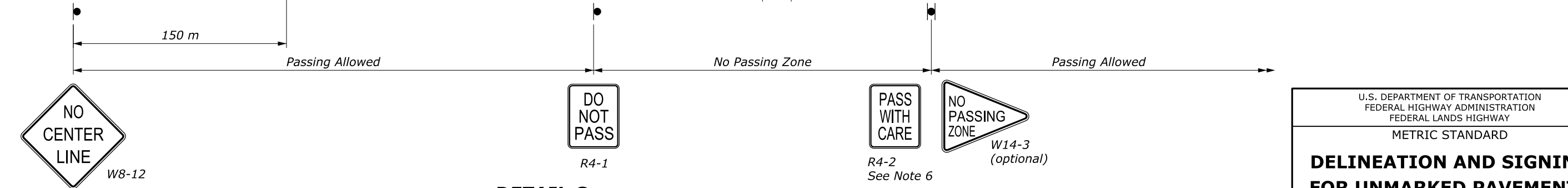
DETAIL A
 Passing zone both directions
 Two-way traffic



DETAIL B
 No Passing zone one direction
 Two-way traffic



DETAIL C
 No Passing zone both directions
 Two-way traffic



NO SCALE

U.S. DEPARTMENT OF TRANSPORTATION FEDERAL HIGHWAY ADMINISTRATION FEDERAL LANDS HIGHWAY	
METRIC STANDARD	
DELINEATION AND SIGNING FOR UNMARKED PAVEMENTS	
STANDARD APPROVED FOR USE 6/1998	STANDARD
REVISED: 6/2005 DRAFT: 8/2013	M635-3