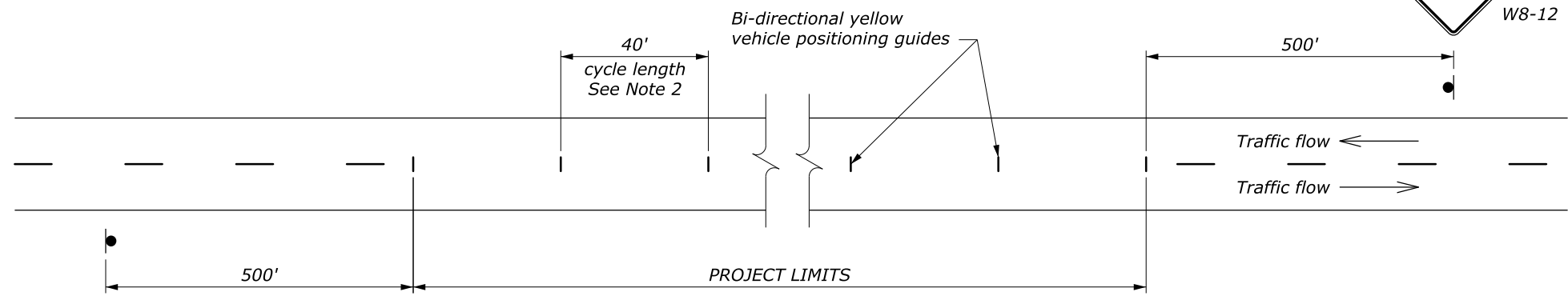
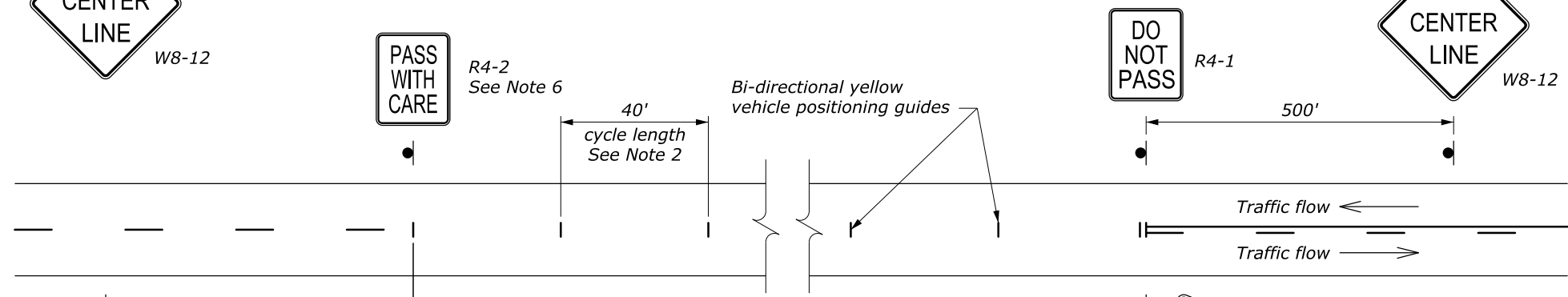


**NOTE:**

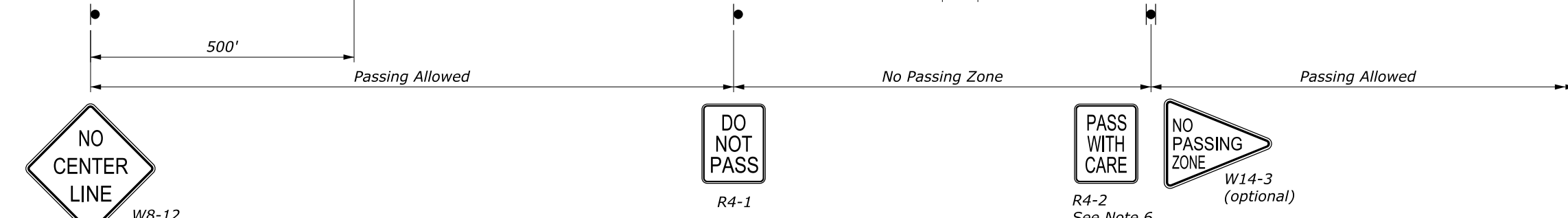
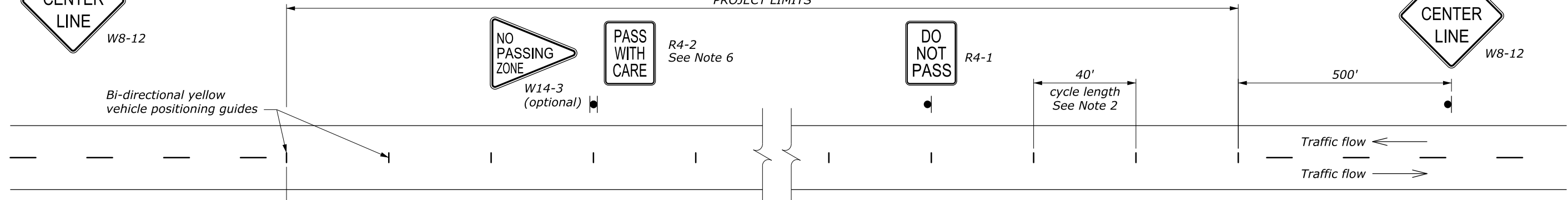
1. The pavement on two- or three-lane roads may remain unmarked up to 14 days when providing signs according to this standard. Optionally use the vehicle positioning guides to provide additional delineation.
2. On curves with radius less than 500', reduce cycle length to 20'.
3. Use permanent markings plan to determine no passing zones for each direction of travel.
4. Repeat R4-1 at 1 mile intervals.
5. Repeat W8-12 after each major intersection and every 2 miles for temporary traffic control zones greater than 3 miles long.
6. Use the "PASS WITH CARE" (R4-2) sign at the downstream end of a no-passing zone only if a "DO NOT PASS" (R4-1) sign has been installed at the upstream end of the zone.



**DETAIL A**  
 Passing zone both directions  
 Two-way traffic



**DETAIL B**  
 No Passing zone one direction  
 Two-way traffic



**DETAIL C**  
 No Passing zone both directions  
 Two-way traffic

NO SCALE

U.S. DEPARTMENT OF TRANSPORTATION  
 FEDERAL HIGHWAY ADMINISTRATION  
 FEDERAL LANDS HIGHWAY

U.S. CUSTOMARY STANDARD

**DELINEATION AND SIGNING  
 FOR UNMARKED PAVEMENTS**

STANDARD APPROVED FOR USE 6/2005	STANDARD
REVISED: DRAFT: 8/2013	635-3