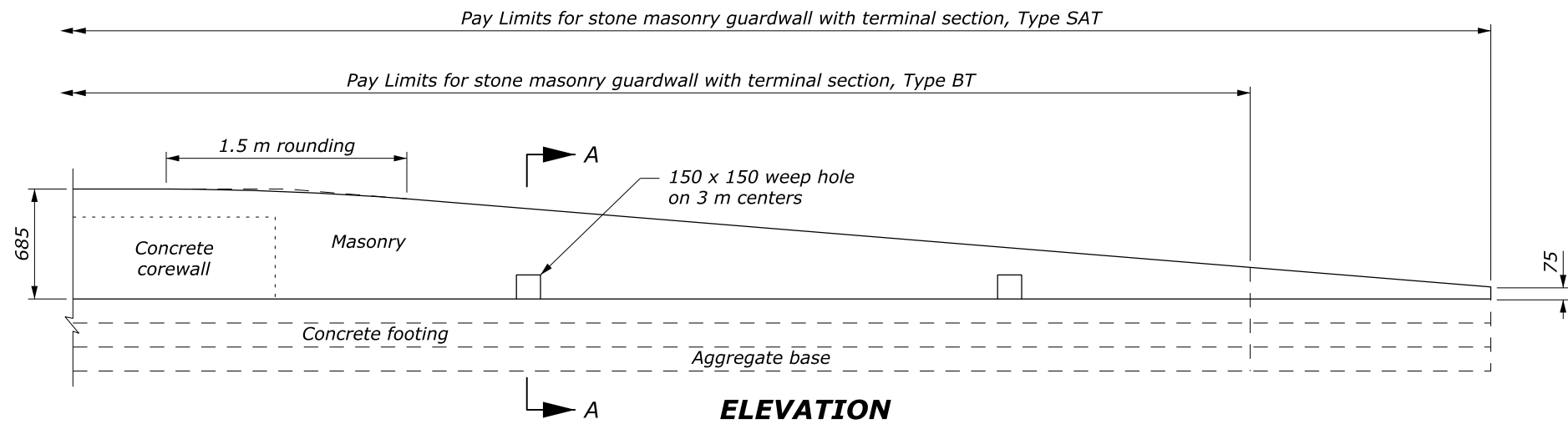


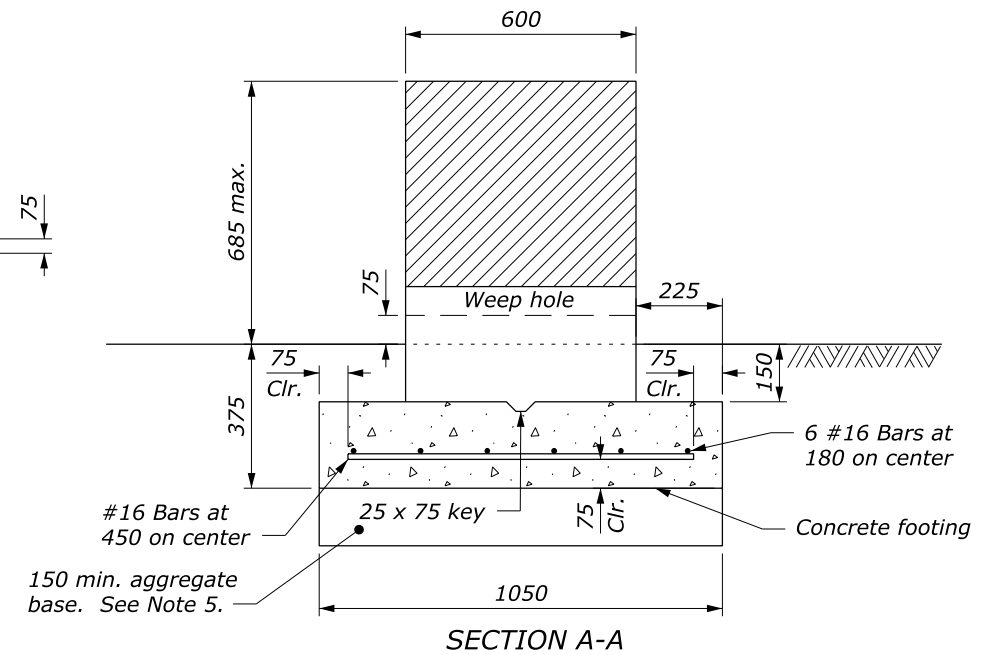
**PLAN**

**NOTE:**

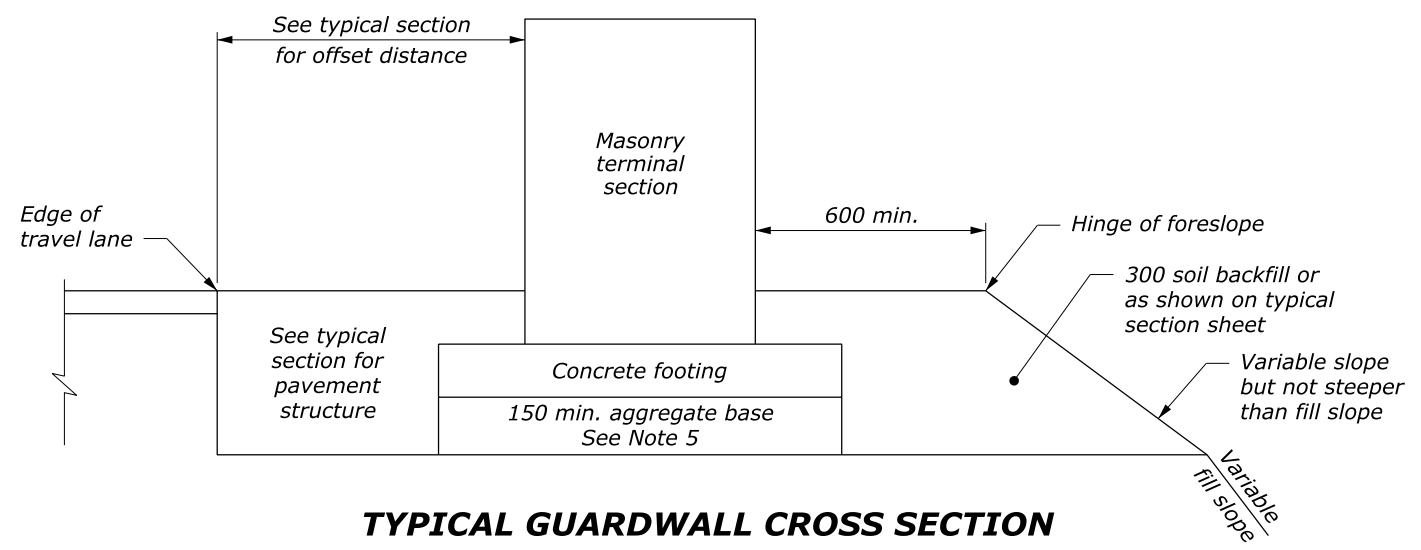
1. Use the Type SAT (Stand alone terminal) terminal section or the Type BT (Buried terminal) terminal section as specified.
2. For the Type BT terminal section delete the last 1.5 m of the Type SAT terminal section. See Standard M204-1, Earth Berm for Roadside Barrier Terminal Section, for construction of the earth berm.
3. Extend the fill widening a minimum of 1.5 m behind the guardwall for the Type SAT terminal section, unless otherwise directed.
4. The plan view guardwall flare indicates the minimum length and rate required. Flare the guardwall to locate the terminal section outside the clear zone as directed by the CO.
5. The depth of base may be less than 150 mm as directed by the CO, when the foundation is on either rock fill or solid rock.
6. Use the appropriate flare rate in guardwall layout to locate the guardwall terminal section outside the clear zone as directed by the CO.
7. Dimensions without units are millimeters.



**ELEVATION**



**SECTION A-A**



**TYPICAL GUARDWALL CROSS SECTION**

Design Speed (km/h)	Shy Line Offset (meters)	Flare Rate (a:b)	
		Inside Shy Line	Outside Shy Line
100	2.4	26:1	18:1
80	2.0	21:1	14:1
60	1.4	16:1	10:1
50 or less	1.1	13:1	8:1

U.S. DEPARTMENT OF TRANSPORTATION  
FEDERAL HIGHWAY ADMINISTRATION  
FEDERAL LANDS HIGHWAY

METRIC STANDARD

**STONE MASONRY GUARDWALL  
TERMINAL SECTIONS  
TYPE SAT AND TYPE BT**

STANDARD APPROVED FOR USE 3/1996  
REVISED: 6/1997 6/2005

STANDARD  
M620-3

NO SCALE

c:\myfiles\pw\_production\dms67489\Std620-3.dgn [Metric] 24 August 2015 3:25 PM