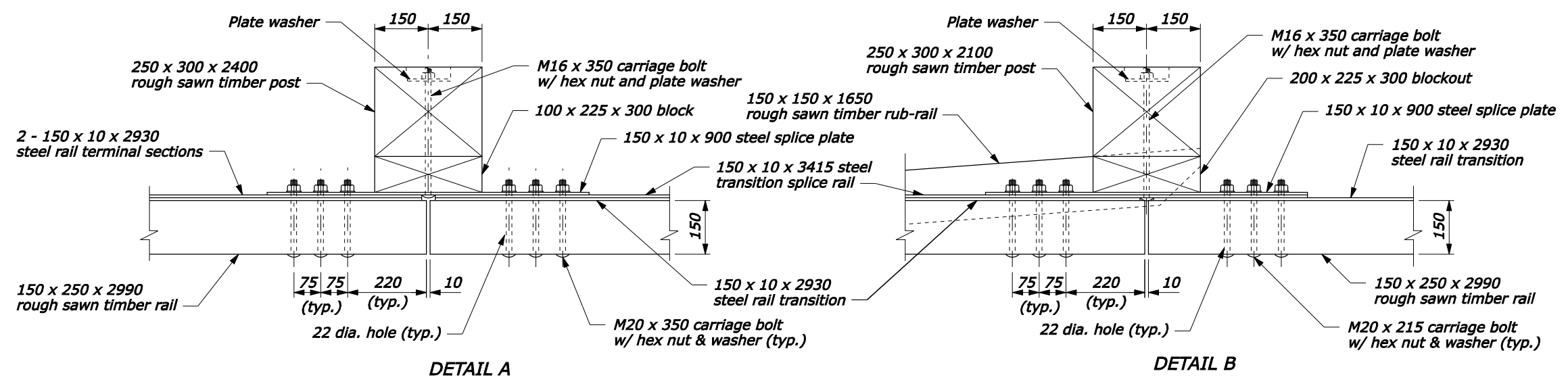
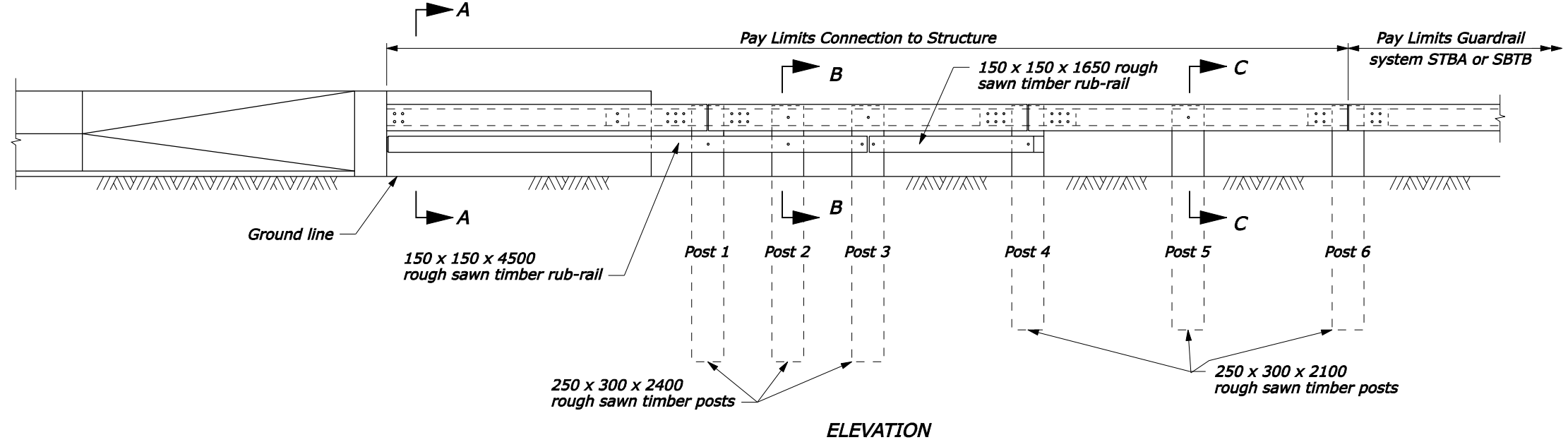


NOTE:

1. See the following sheets for Sections A-A through C-C, steel rail layouts, and other details.
2. Use weathering steel for all structural steel and fastener hardware.
3. Furnish hardware in the metric sizes shown. Equivalent US Customary sizes may be used when metric sizes are not available.
4. Dimensions without units are millimeters.



POST CONNECTION

NO SCALE

U.S. DEPARTMENT OF TRANSPORTATION
 FEDERAL HIGHWAY ADMINISTRATION
 FEDERAL LANDS HIGHWAY

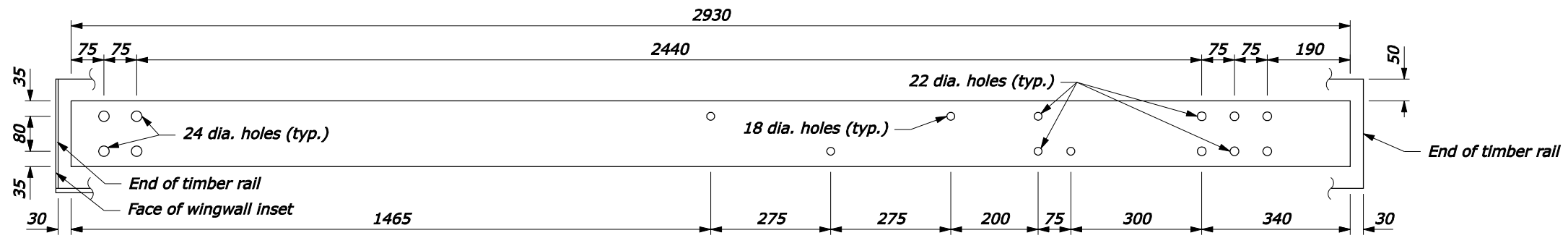
METRIC STANDARD
**STEEL-BACKED TIMBER GUARDRAIL
 CONNECTION TO
 CURVED BACK STRUCTURE**
 Sheet 1 of 3

STANDARD APPROVED FOR USE 3/1996

REVISOR: 1/2008
 DRAFT: 1/2008

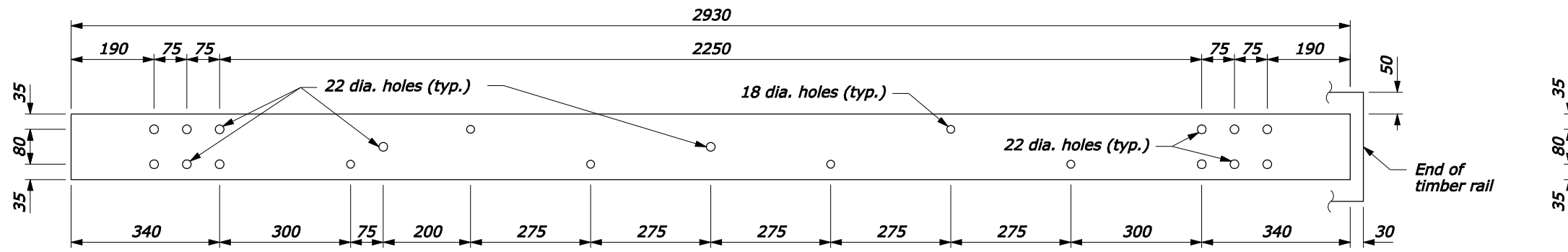
STANDARD
M617-66

23-Jan-2008 04:10 PM
 fhp://196.145.188.2/scd_plan/m61766.dgn [Metric]

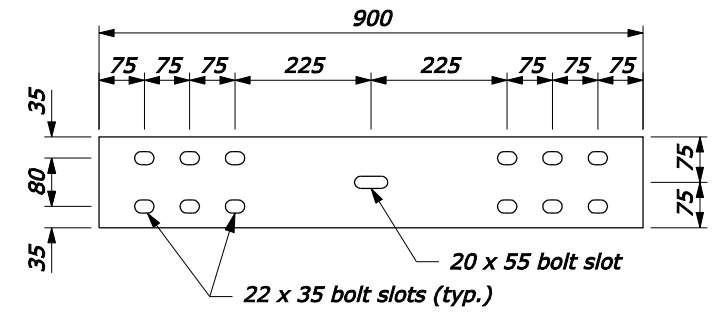


TERMINAL SECTION RAIL
150 x 10 x 2930

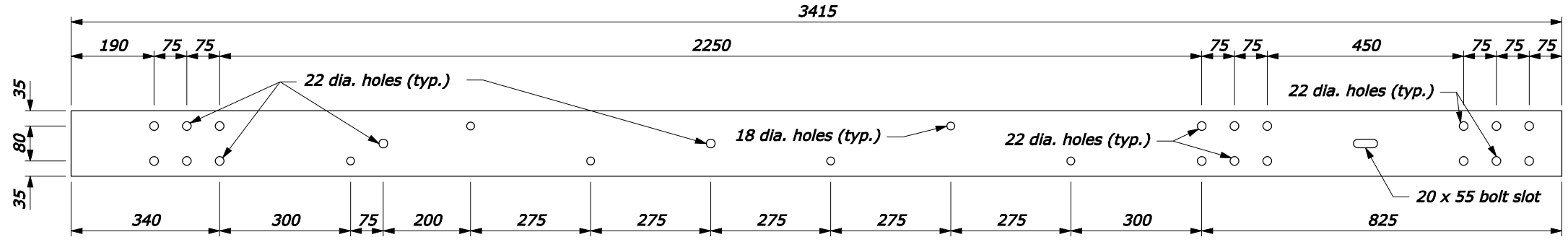
- NOTE:**
1. Pre-drill 16 mm holes in timber rail and 10 mm holes in the wood spacer block for the 16 mm lag screws.
 2. Furnish hardware in the metric sizes shown. Equivalent US Customary sizes may be used when metric sizes are not available.
 3. Dimensions without units are millimeters.



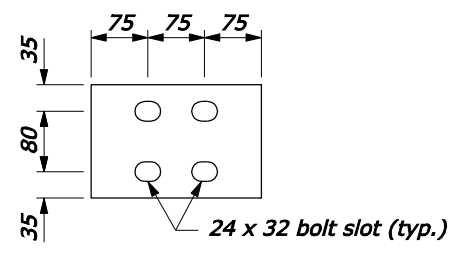
TRANSITION RAIL
150 x 10 x 2930



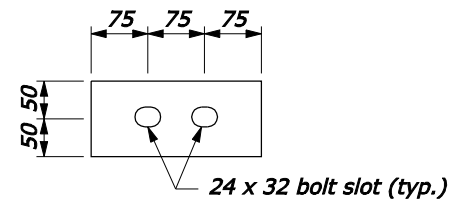
SPLICE PLATE
150 x 10 x 900



TRANSITION SPLICE RAIL
150 x 10 x 3415

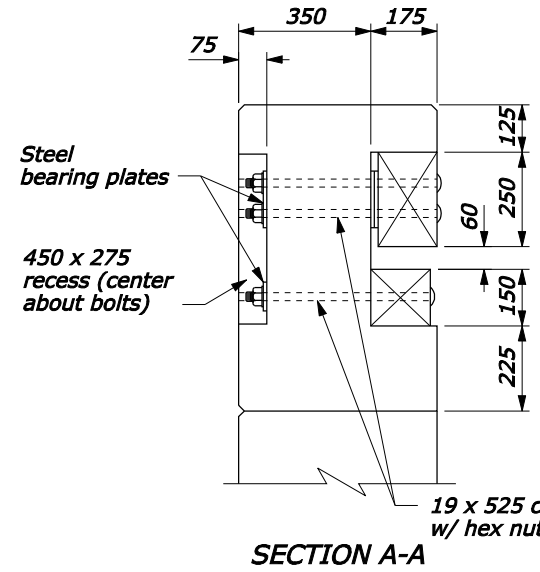


150 x 10 x 225

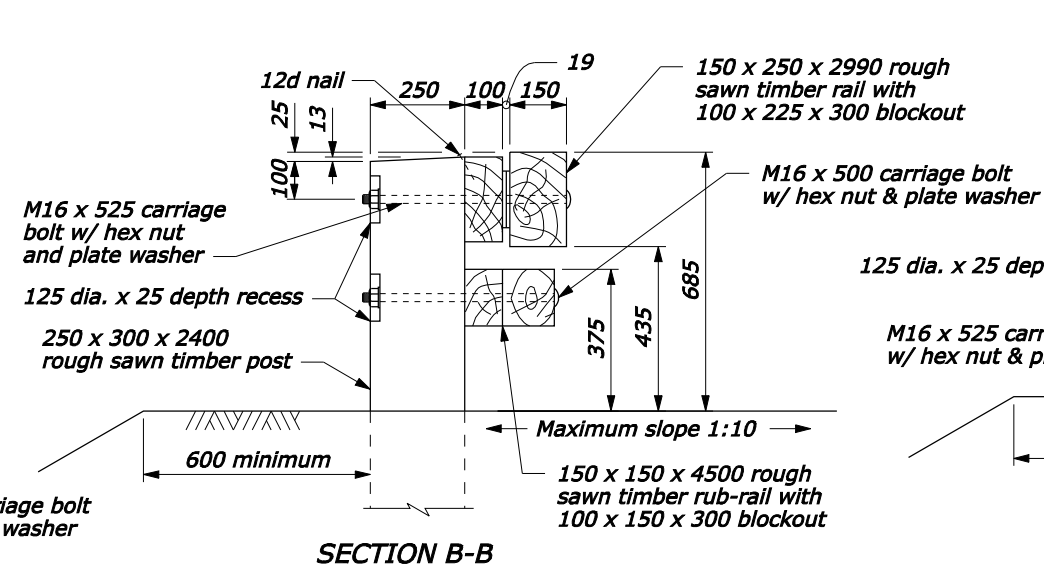


100 x 10 x 225

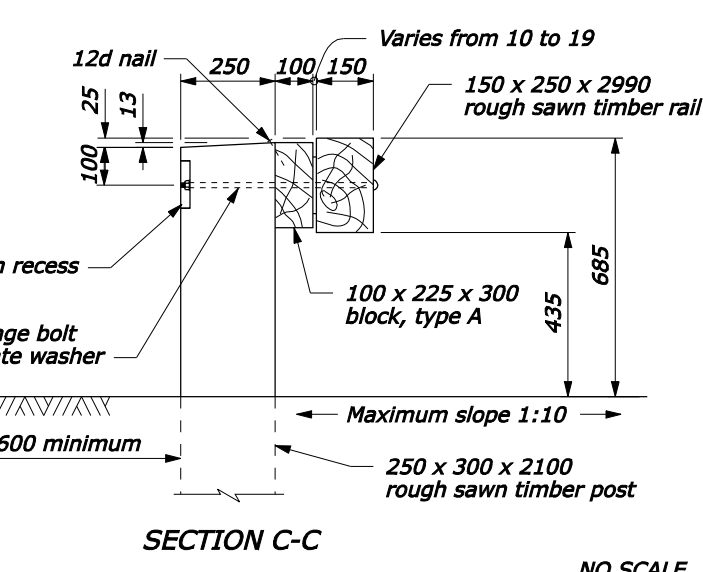
BEARING PLATE DETAILS



SECTION A-A



SECTION B-B



SECTION C-C

NO SCALE

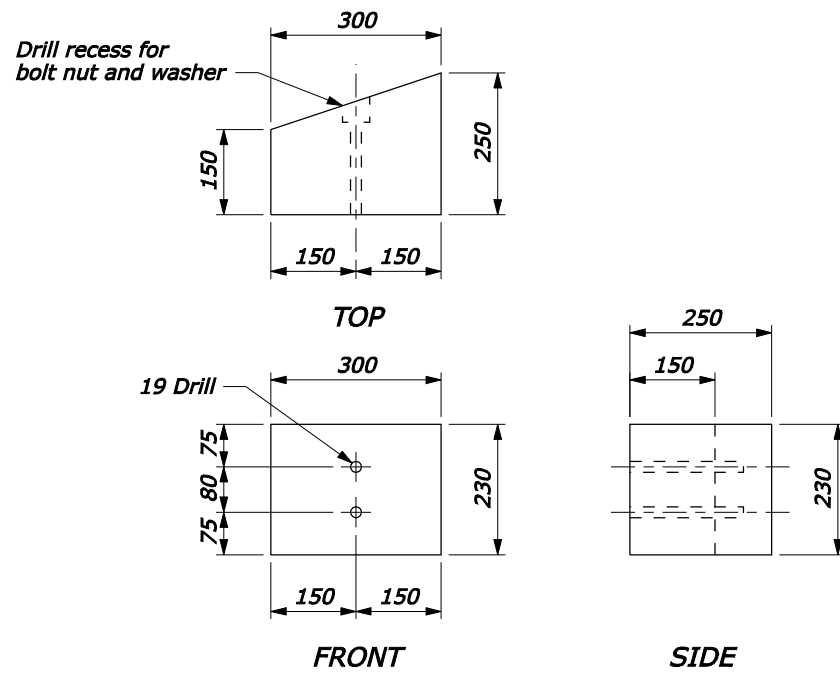
U.S. DEPARTMENT OF TRANSPORTATION
FEDERAL HIGHWAY ADMINISTRATION
FEDERAL LANDS HIGHWAY

METRIC STANDARD
STEEL-BACKED TIMBER GUARDRAIL CONNECTION TO CURVED BACK STRUCTURE
Sheet 2 of 3

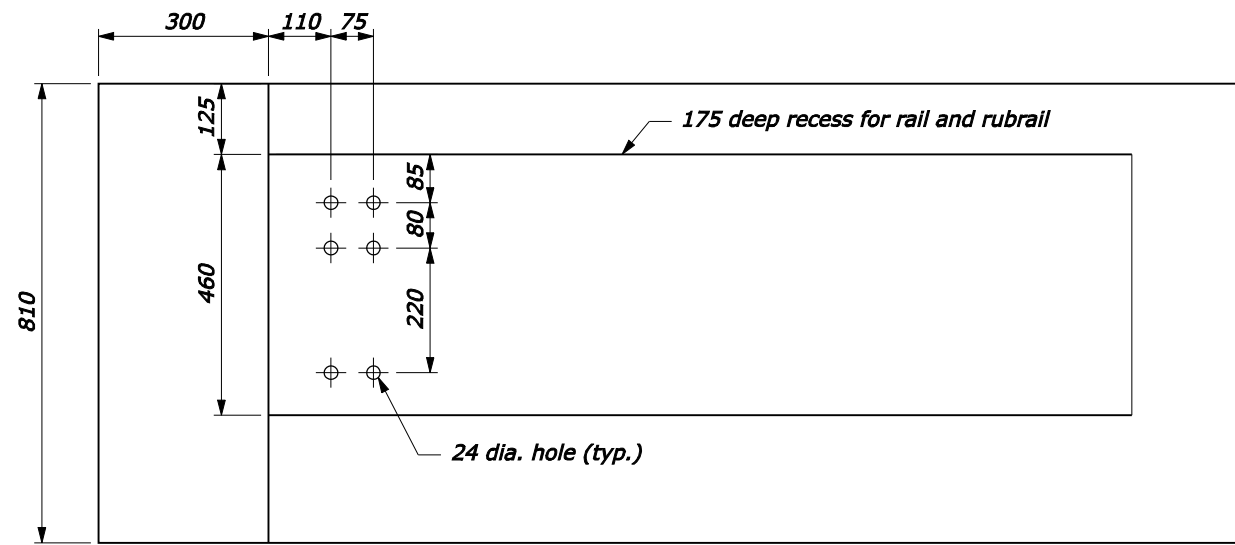
STANDARD APPROVED FOR USE 3/1996
REVISOR: 1/2008
DRAFT: 1/2008

STANDARD
M617-66

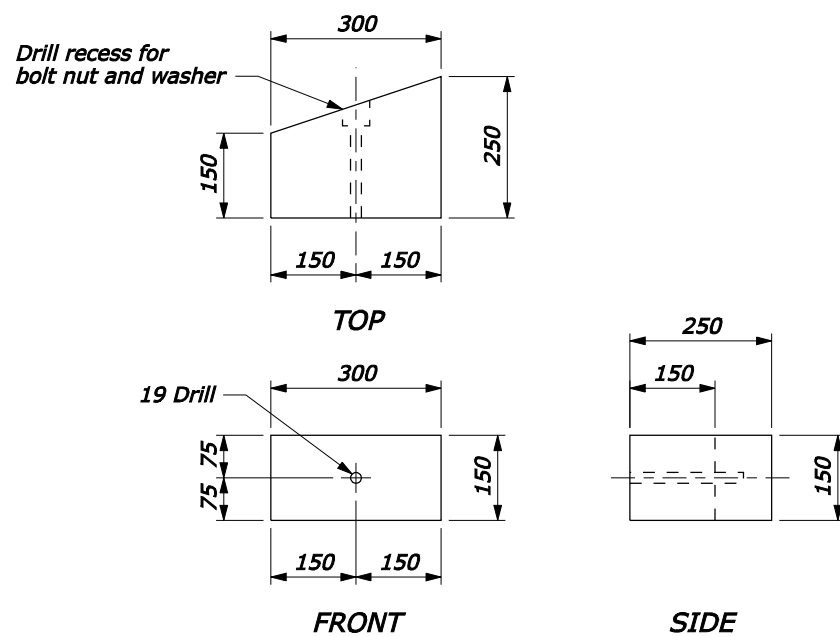
23-Jan-2008 04:10 PM
fp://196.145.188.2/scd_plan/s61766.dgn [Metric]



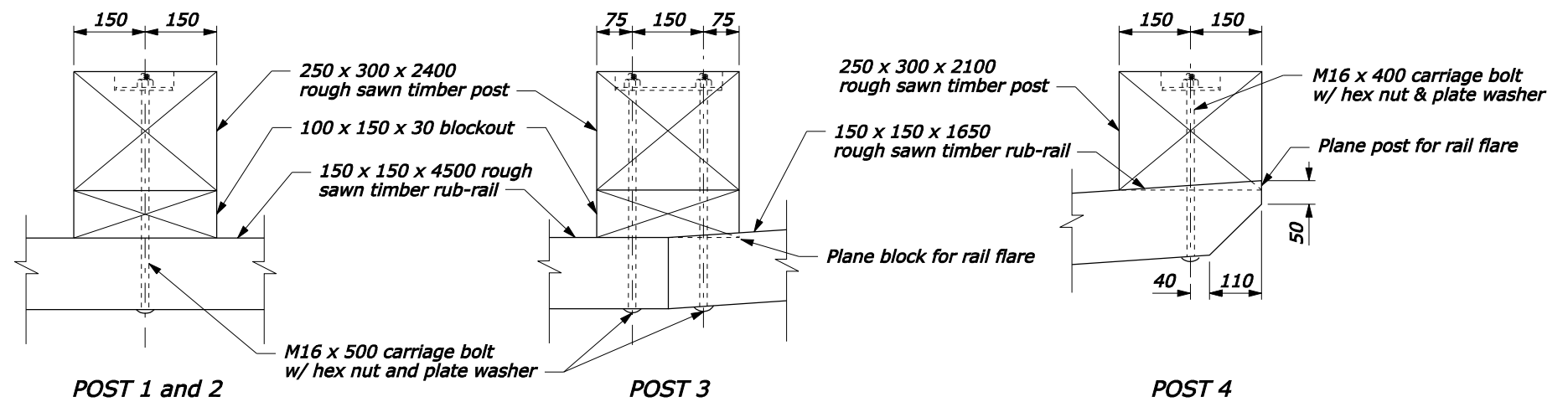
SPACER BLOCK FOR RAIL



PARAPET ATTACHMENT DETAIL



SPACER BLOCK FOR RUB-RAIL



RUB-RAIL CONNECTIONS

NO SCALE

U.S. DEPARTMENT OF TRANSPORTATION FEDERAL HIGHWAY ADMINISTRATION FEDERAL LANDS HIGHWAY	
METRIC STANDARD STEEL-BACKED TIMBER GUARDRAIL CONNECTION TO CURVED BACK STRUCTURE Sheet 3 of 3	
STANDARD APPROVED FOR USE 3/1996	STANDARD M617-66
REVISED: DRAFT: 1/2008	