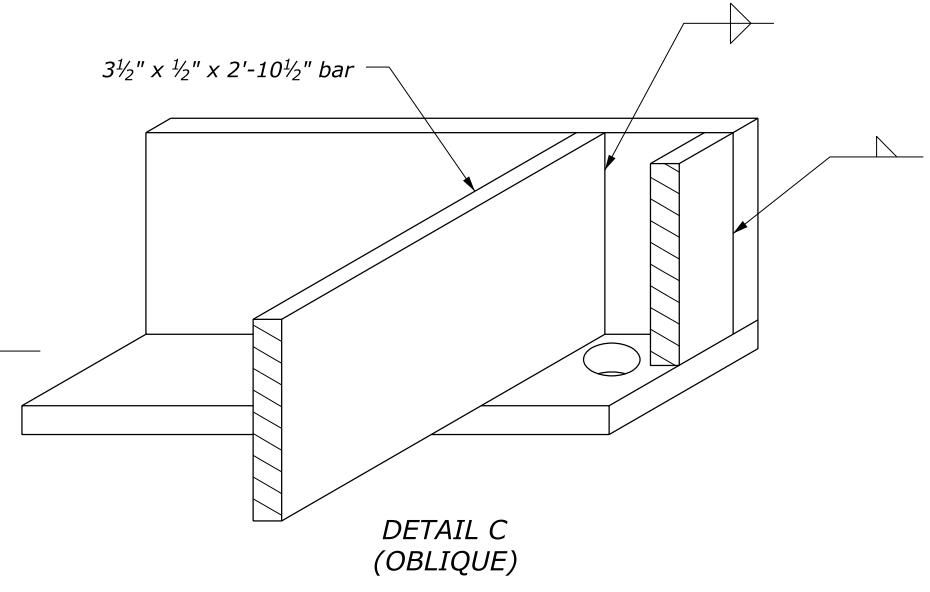
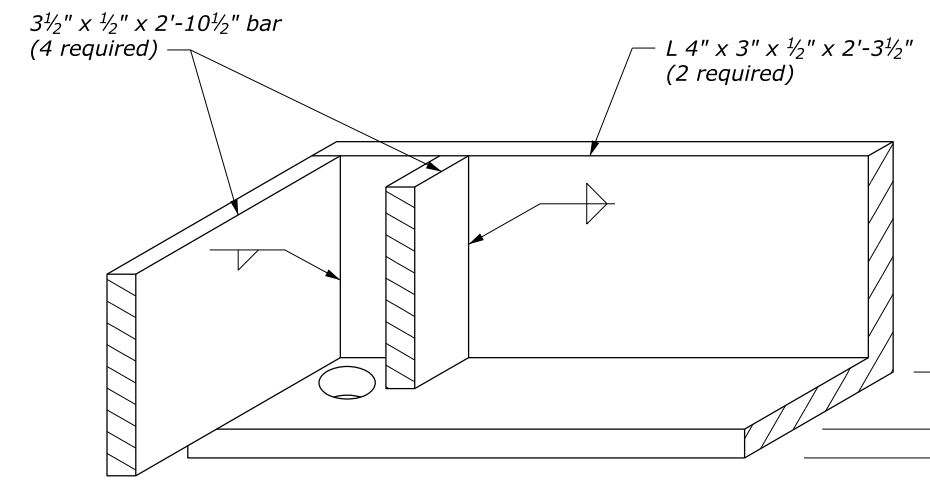
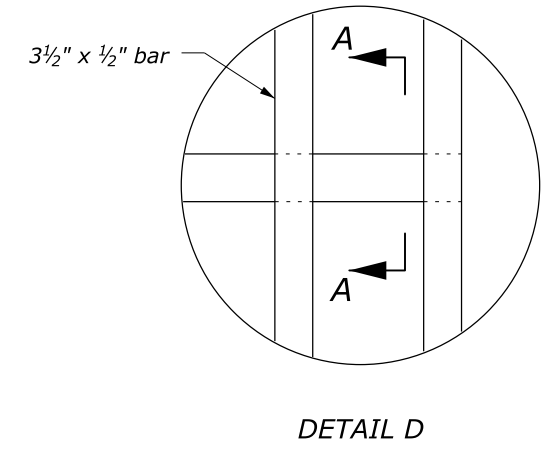
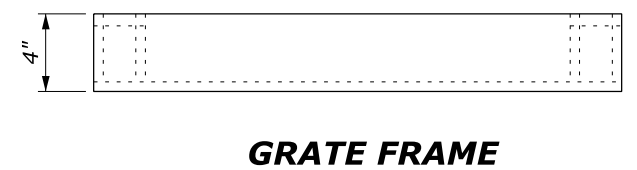
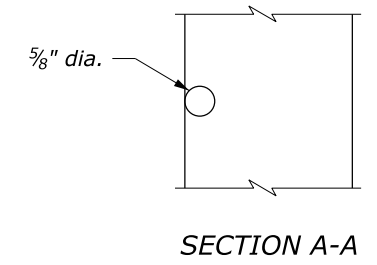
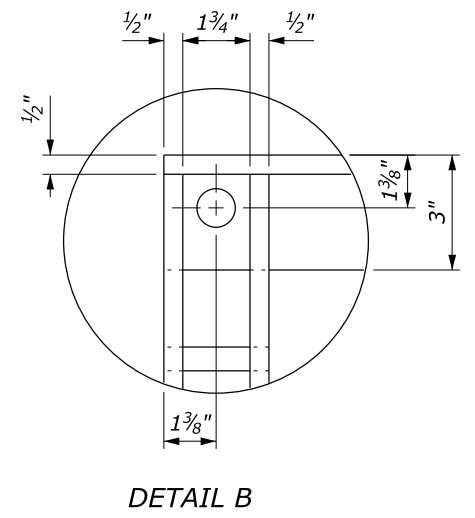


**NOTE:**

1. Hot dip galvanize all metal parts for frame and grate after fabrication.
2. Fabricate frame and grate from structural steel.
3. Furnish four 3/4" x 8" anchor bolts with nuts to attach frame to inlet.
4. Cut holes in 3 1/2" x 1/2" bar as required to place 5/8 inch diameter rods.
5. Spot weld 5/8 inch diameter rods for frame and grate to 3 1/2" x 1/2" bars.



U.S. DEPARTMENT OF TRANSPORTATION FEDERAL HIGHWAY ADMINISTRATION FEDERAL LANDS HIGHWAY	
U.S. CUSTOMARY STANDARD	
<b>FRAME AND GRATE TYPE 5A</b>	
STANDARD APPROVED FOR USE 6/2005	STANDARD
REVISED:	604-6

NO SCALE