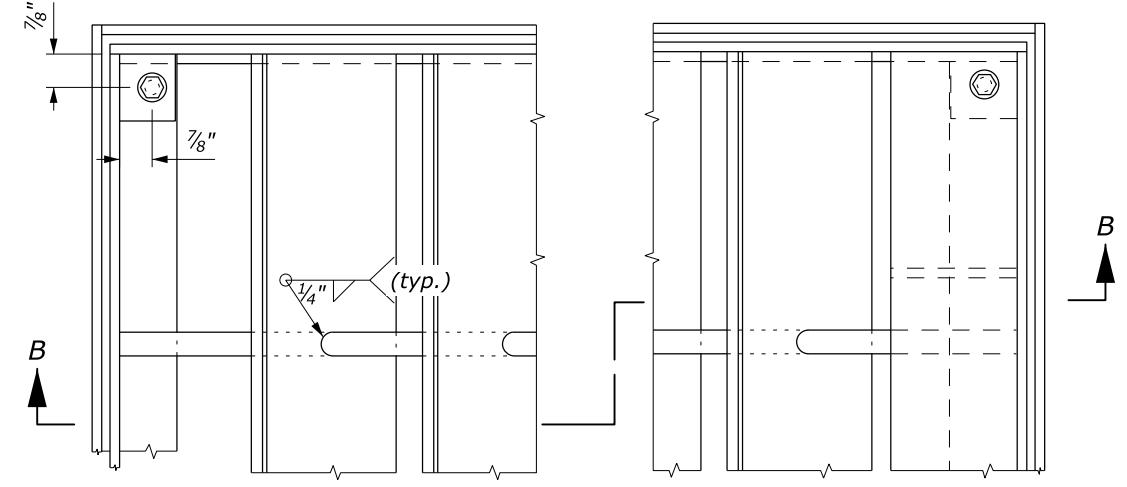
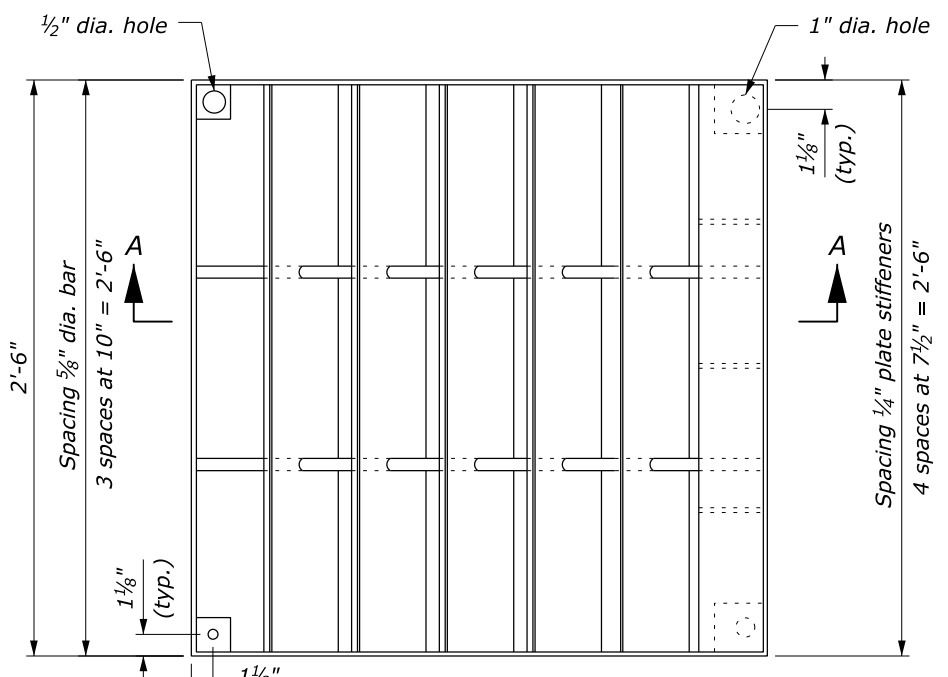


L4" x 2 1/2" x 1/4"
(trim L to size)

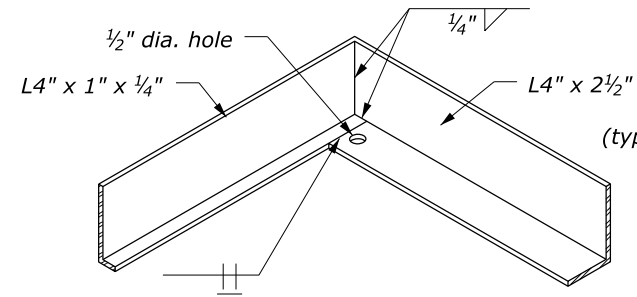
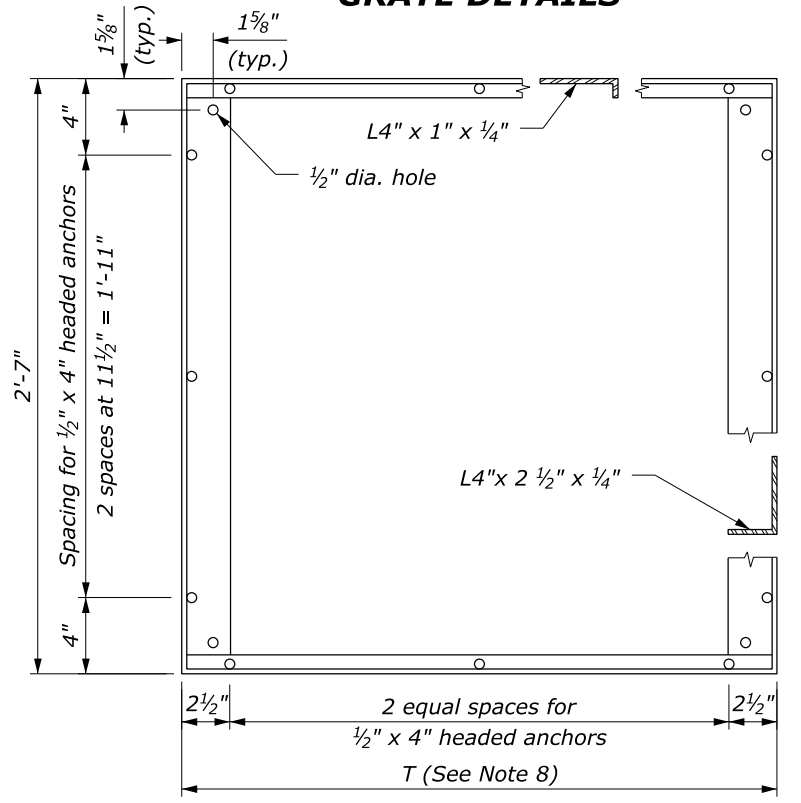
NOTE:

1. STRUCTURAL STEEL: AASHTO M 183 (ASTM A 36M).
2. BOLTS & WASHERS: ASTM A 307, Galvanized.
3. THREADED CONCRETE ANCHORS: Ferrule loop inserts for 3/8" bolt or approved equal.
4. HEADED CONCRETE ANCHORS: Weld to frame with a full penetration butt weld.
5. WELDING: Weld in conformance with the Standard Specifications. Unless otherwise indicated seal weld all joints with a minimum size fillet weld, based on material thickness. Grind smooth all contact surfaces. FINISH: Galvanized after fabrication.
6. Estimated weight, frame and grate (2'-6" x 2'-6") 215 lbs. Increase or decrease weight by 28 lbs for each 4 1/2" increment.
7. Number of plates varies according to pipe diameter. See Standard 604-1.
8. See Standard 604-1 for dimensions of T.

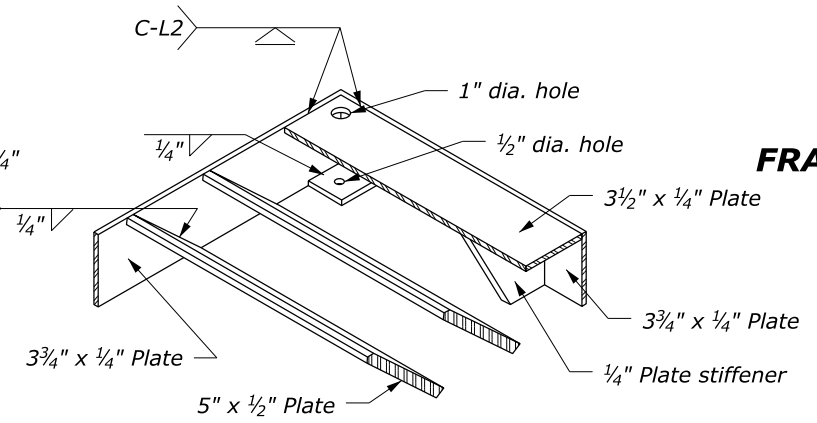


GRATE DETAILS

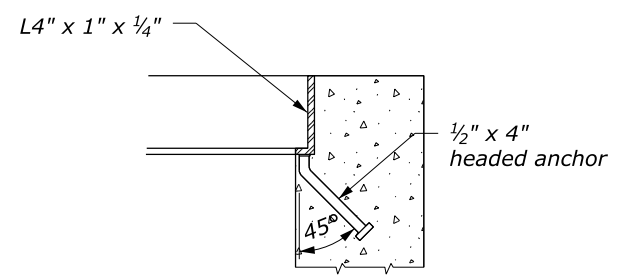
FRAME AND GRATE DETAILS



FRAME CORNER DETAIL



GRATE CORNER DETAIL



FRAME ANCHOR DETAIL

NO SCALE

U.S. DEPARTMENT OF TRANSPORTATION FEDERAL HIGHWAY ADMINISTRATION FEDERAL LANDS HIGHWAY	
U.S. CUSTOMARY STANDARD	
METAL FRAME AND GRATE TYPE A	
STANDARD APPROVED FOR USE 6/2005	STANDARD
REVISED:	604-2