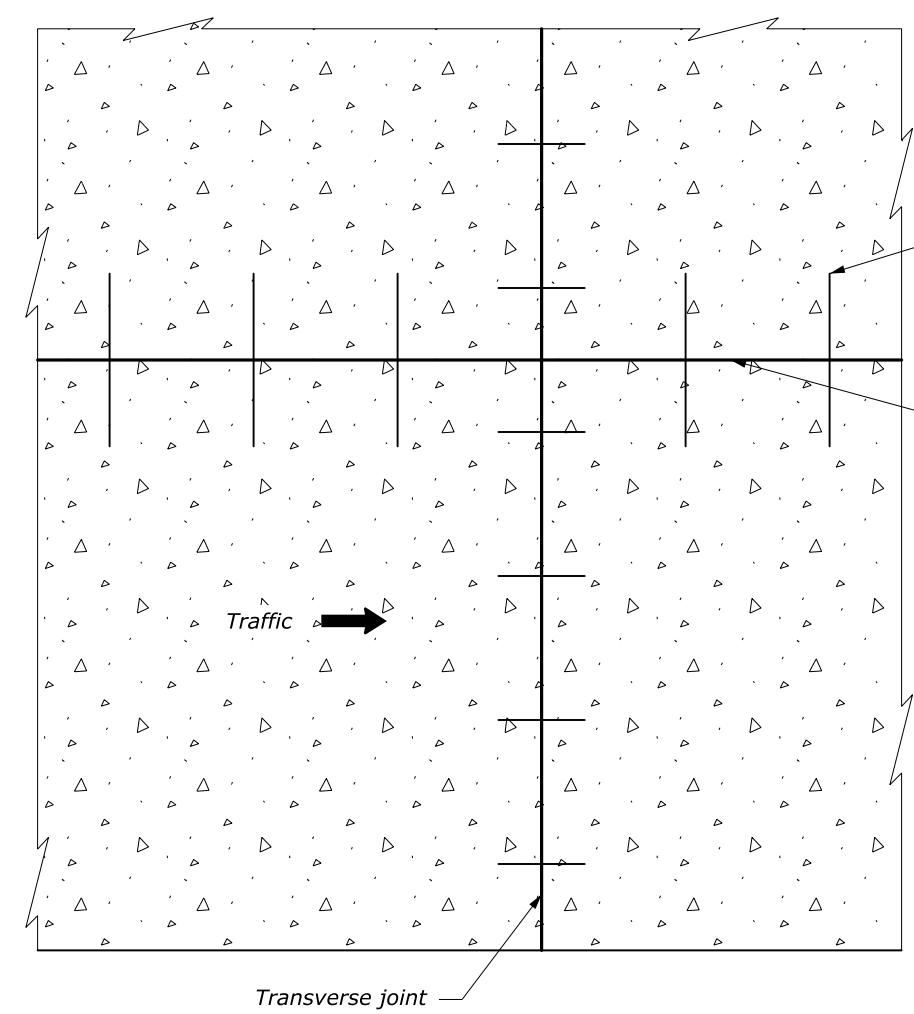
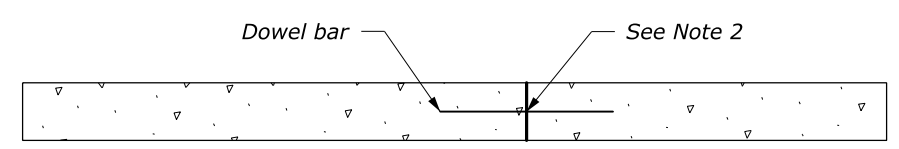


NOTE:

1. Provide the same type of dowel assemblies and tie bars for joints in plain portland cement concrete pavement as shown for joints in reinforced pavement.
2. See Standard M501-2 for joint and joint sealing details.
3. Lap longitudinal and transverse reinforcement not less than 380 mm.
4. Dimensions without units are millimeters.



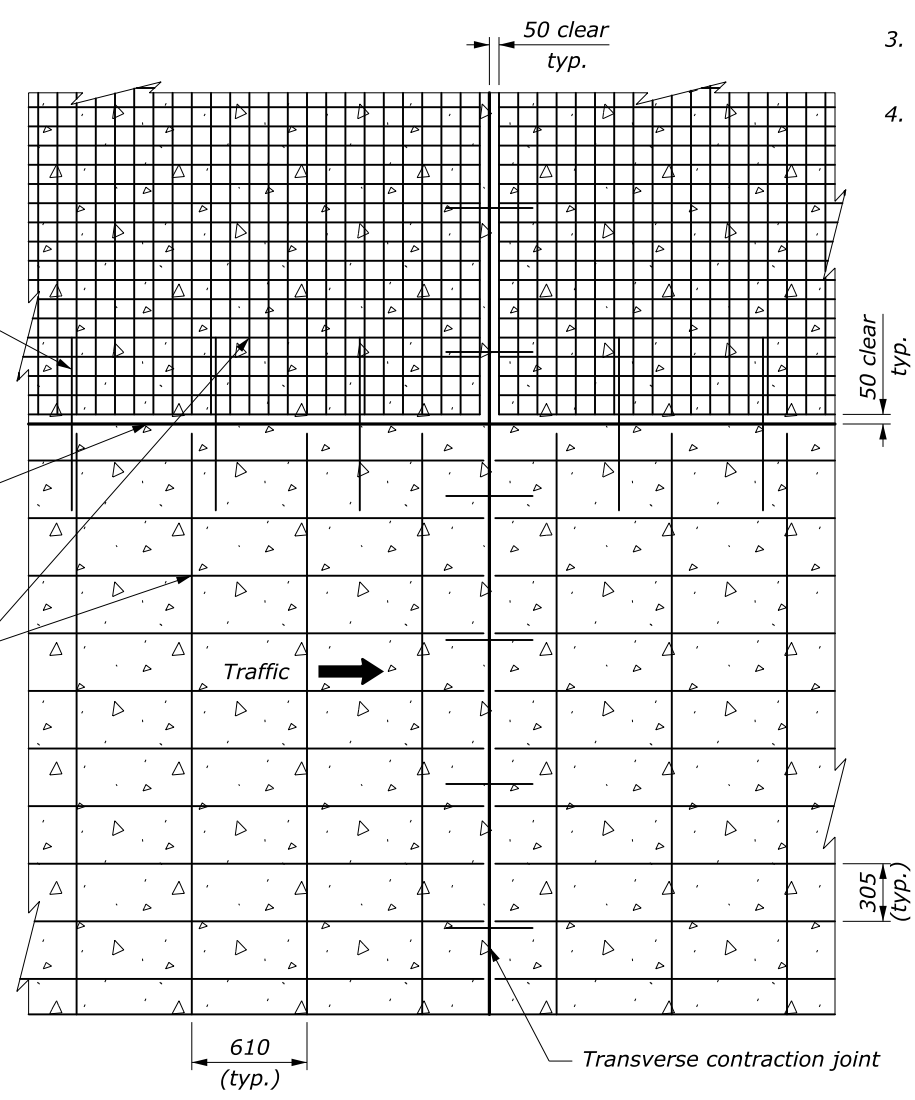
PLAN



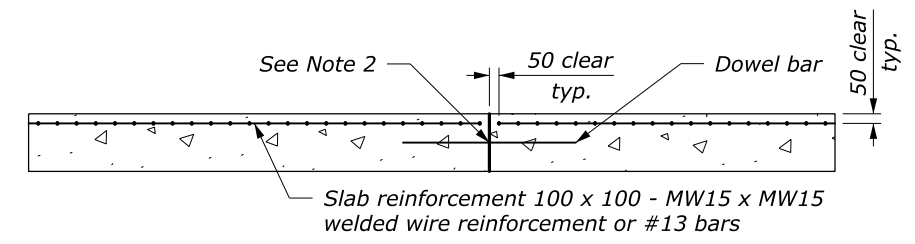
PROFILE

PLAIN MINOR CONCRETE PAVEMENT

Tie bar
 Longitudinal joint
 Slab reinforcement 100 x 100 -
 MW15 x MW15 welded wire
 reinforcement or #13 bars



PLAN



PROFILE

REINFORCED MINOR CONCRETE PAVEMENT

PAVEMENT THICKNESS (mm)	TRANSVERSE JOINT SPACING (m)
$T < 150$	3
$150 \leq T < 300$	4.5

U.S. DEPARTMENT OF TRANSPORTATION
 FEDERAL HIGHWAY ADMINISTRATION
 FEDERAL LANDS HIGHWAY
 METRIC STANDARD

MINOR CONCRETE PAVEMENT

STANDARD APPROVED FOR USE 3/1996
 REVISED: 6/1997
 DRAFT: 9/2016

STANDARD M501-1

NO SCALE