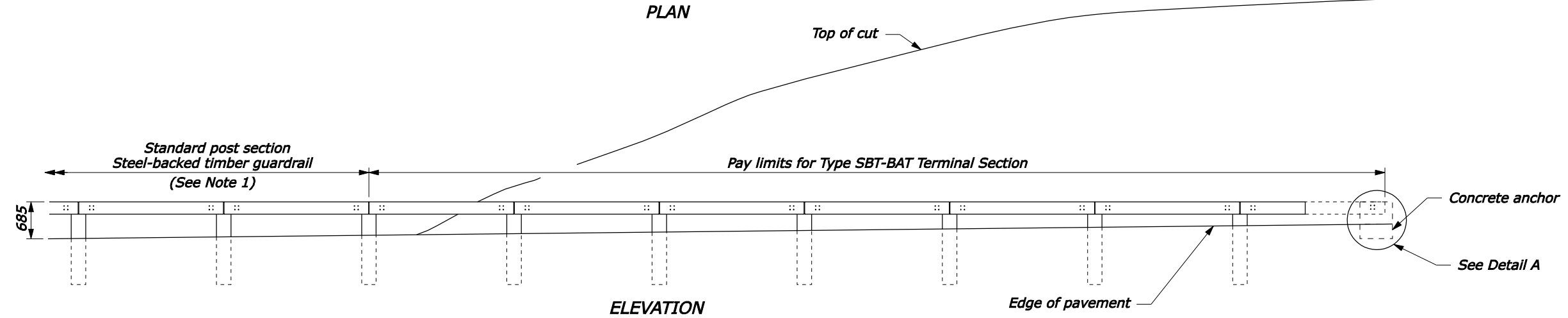
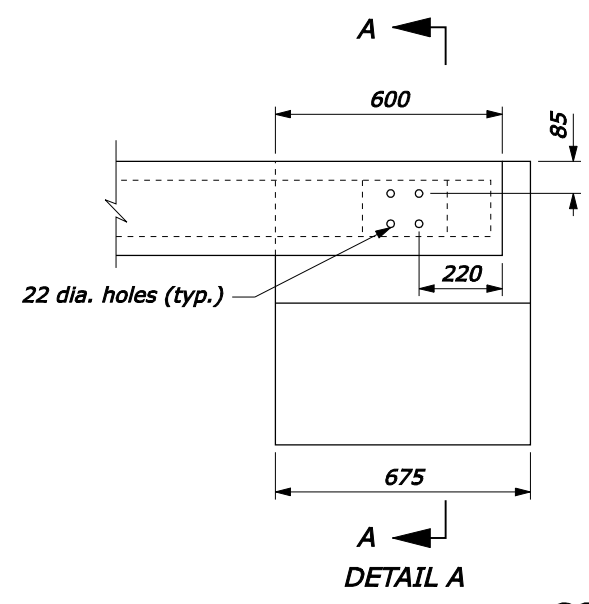


- NOTE:**
1. See Standard M617-60, SBTA and SBTB for timber, structural steel, and hardware details.
  2. On the Type A, blocked-out guardrail, include the blocks in the terminal section, except on the concrete anchor. For the Type B, non-blocked-out guardrail, no blocks are included.
  3. Begin the cut flares at the nearest post to a transition point between fill and cut as directed by the CO.
  4. Extend the flare into the cut until a minimum 300 mm cover is obtained over the guardrail end.
  5. Furnish hardware in the metric sizes shown. Equivalent US Customary sizes may be used when metric sizes are not available.
  6. Dimensions without units are millimeters.

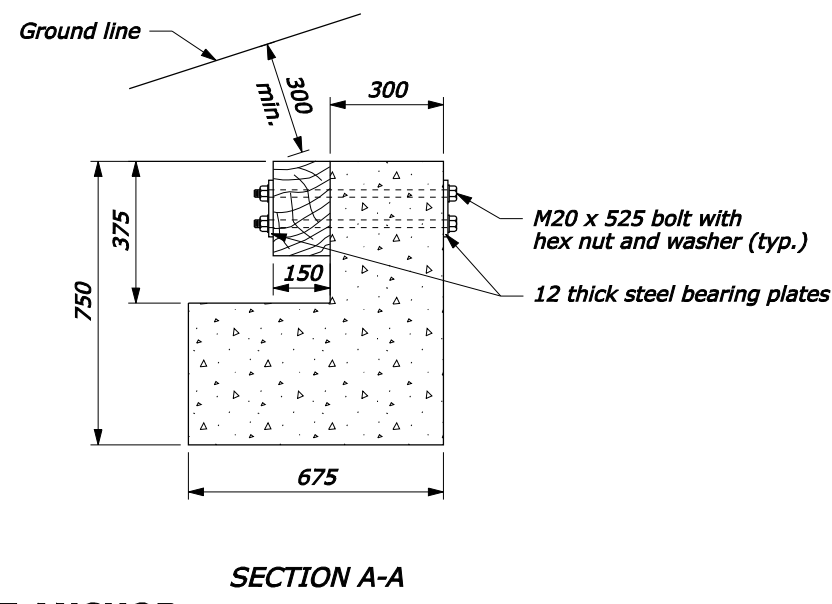


**APPROACH & DEPARTURE FLARE WITH BACK SLOPE ANCHOR TERMINAL (BAT)**

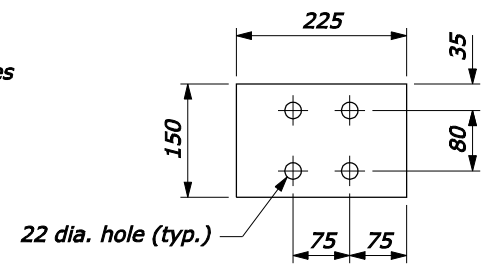
Design Speed (km/h)	Shy line offset (m)	Flare rate inside shy line (a:b)	Flare rate outside shy line (a:b)
100	2.5	26:1	14:1
80	2.0	21:1	11:1
60	1.5	16:1	8:1
50 or less	1.0	13:1	7:1



**CONCRETE ANCHOR**



**SECTION A-A**



**STEEL BEARING PLATE**

U.S. DEPARTMENT OF TRANSPORTATION  
 FEDERAL HIGHWAY ADMINISTRATION  
 FEDERAL LANDS HIGHWAY  
 METRIC STANDARD  
**STEEL-BACKED TIMBER GUARDRAIL  
 TERMINAL SECTION  
 TYPE SBT-BAT**  
 STANDARD APPROVED FOR USE 3/1996  
 REVISED: 6/2005  
 STANDARD  
**M617-62**

NO SCALE

24-Sep-2007 06:32 AM F:\StandDraw\std61762.dgn [Metric]