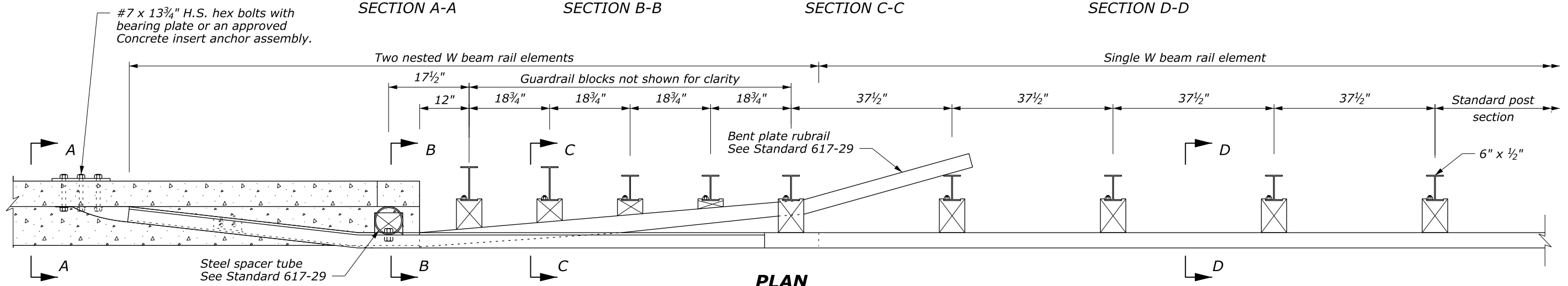


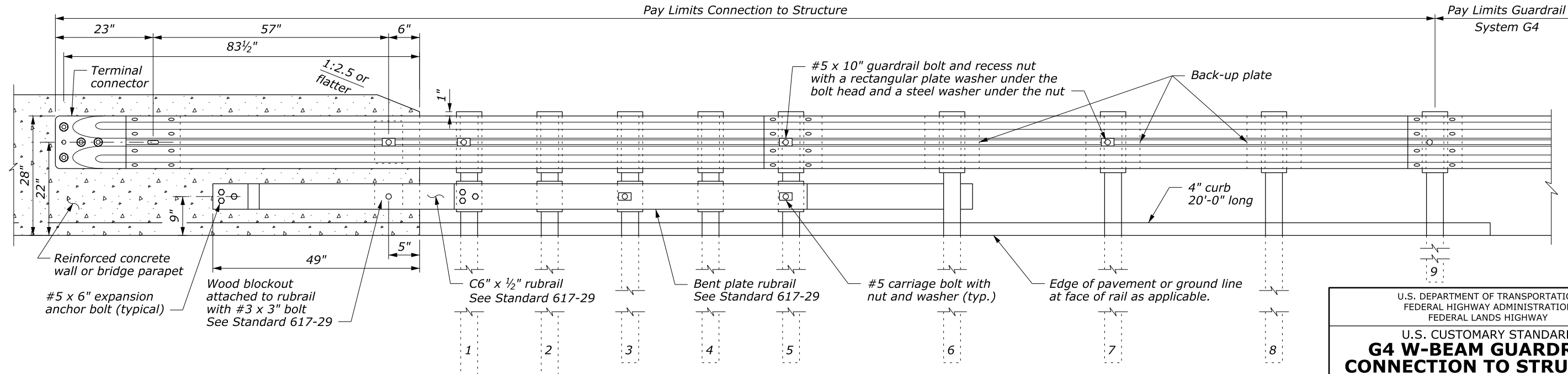
- NOTE:**
1. Posts 1 through 5 require an additional hole to attach lower wood blocks and/or rubrail.
 2. Offset drill wood blocks for rubrail to sit squarely on the post flange on posts 1 through 4. Secure blocks to posts 2 and 4. Secure rubrail and blocks to post flange on posts 1, 3, and 5 using #5 carriage bolts.
 3. Do not bolt W beam to posts and blocks at posts 2 and 4.
 4. Reinforced concrete wall or bridge parapet must be capable of developing a 59.6 kip pull out strength.

BEARING PLATE

SECTION A-A SECTION B-B SECTION C-C SECTION D-D



PLAN



ELEVATION

U.S. DEPARTMENT OF TRANSPORTATION
 FEDERAL HIGHWAY ADMINISTRATION
 FEDERAL LANDS HIGHWAY

U.S. CUSTOMARY STANDARD
**G4 W-BEAM GUARDRAIL
 CONNECTION TO STRUCTURE
 SAFETY SHAPE FACE
 STEEL POSTS**

STANDARD APPROVED FOR USE --/--

REVISOR: STANDARD
 DRAFT: 9/2013 617-28

NO SCALE

30 September 2013 10:59 AM c:\myfiles\pw_production\dms67487\Standard_617-28.DRAFT.dgn [USC]