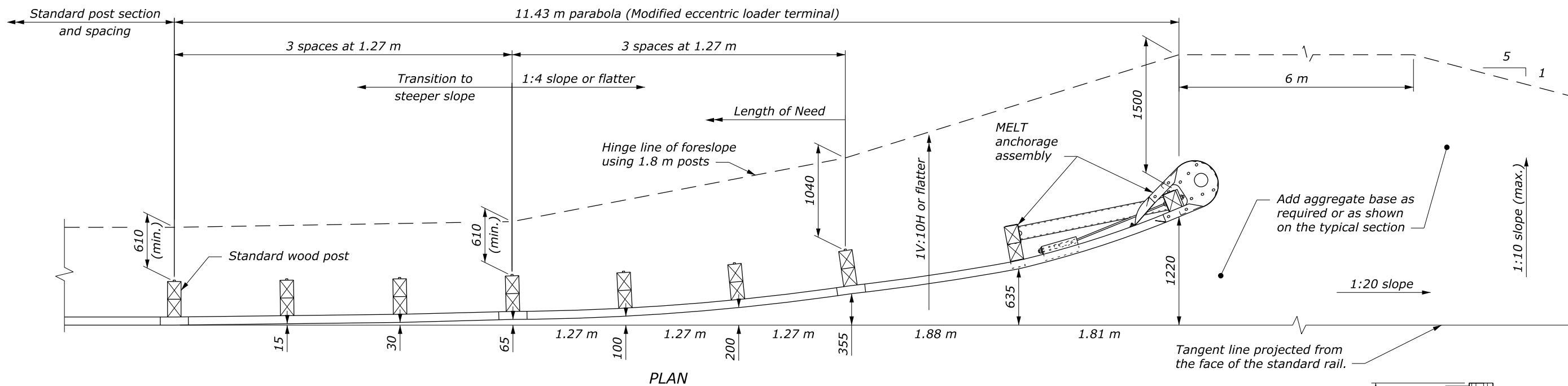
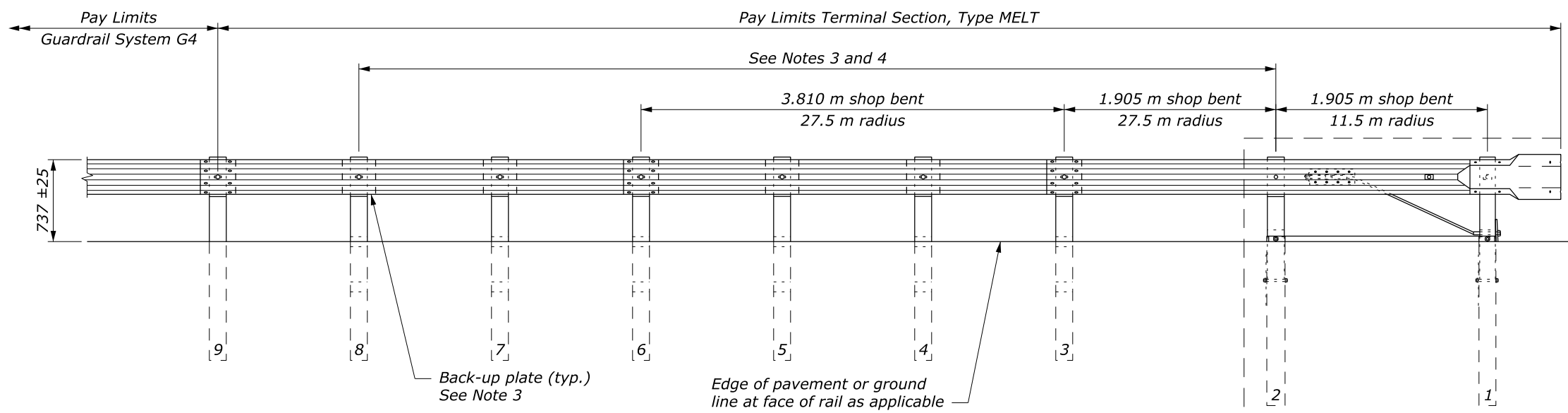


NOTE:

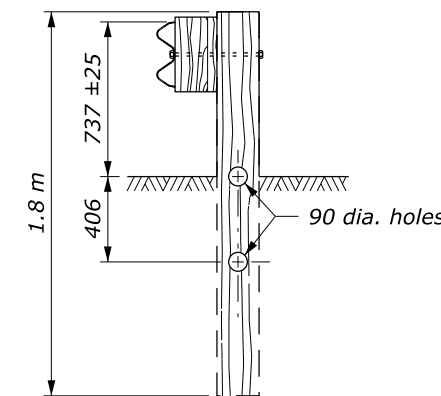
1. Do not use terminal where speeds are in excess of 70 kph.
2. Extend bolts through the post and block, but not through the W beam rail for Posts #2-8. Extend bolts through the W-Beam rail for Posts #1 and #9.
3. Use Back-up plates on posts #4, 5, 7, and 8.
4. Use Shelf angle on post #2.
5. Dimensions without units are millimeters.



PLAN



ELEVATION

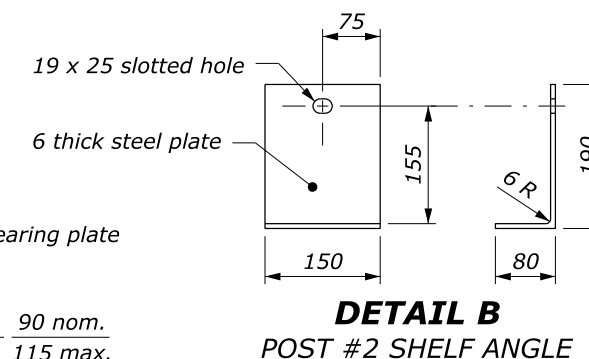
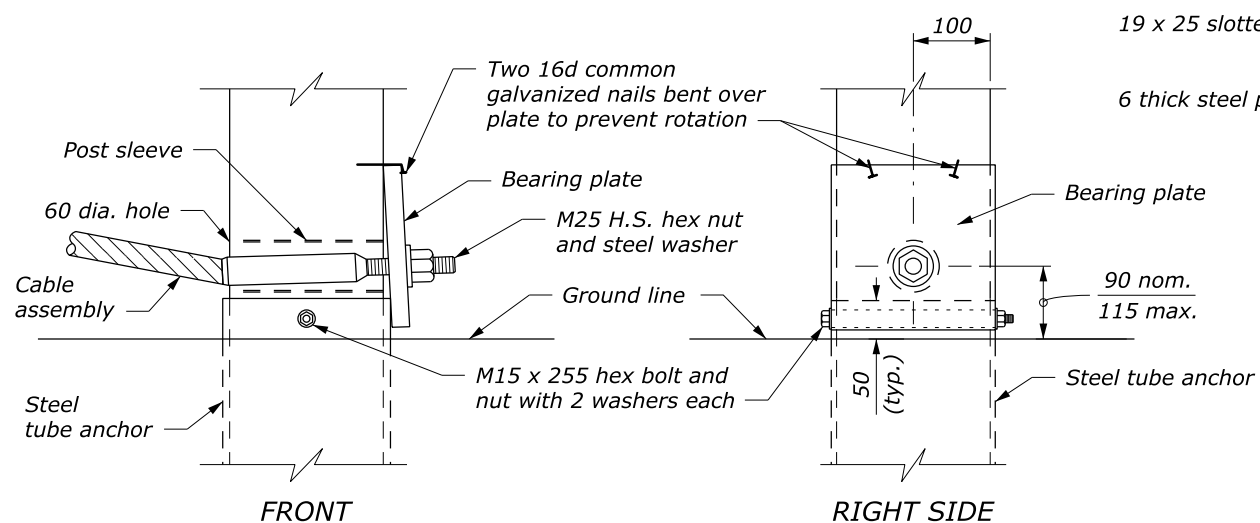
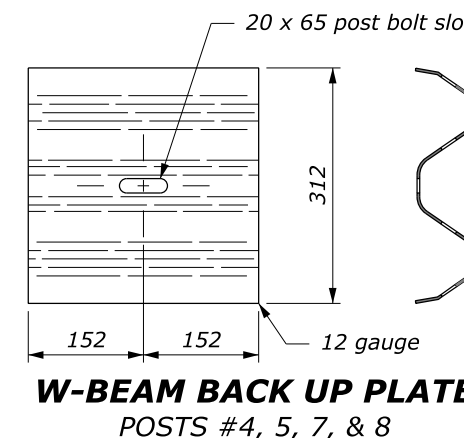
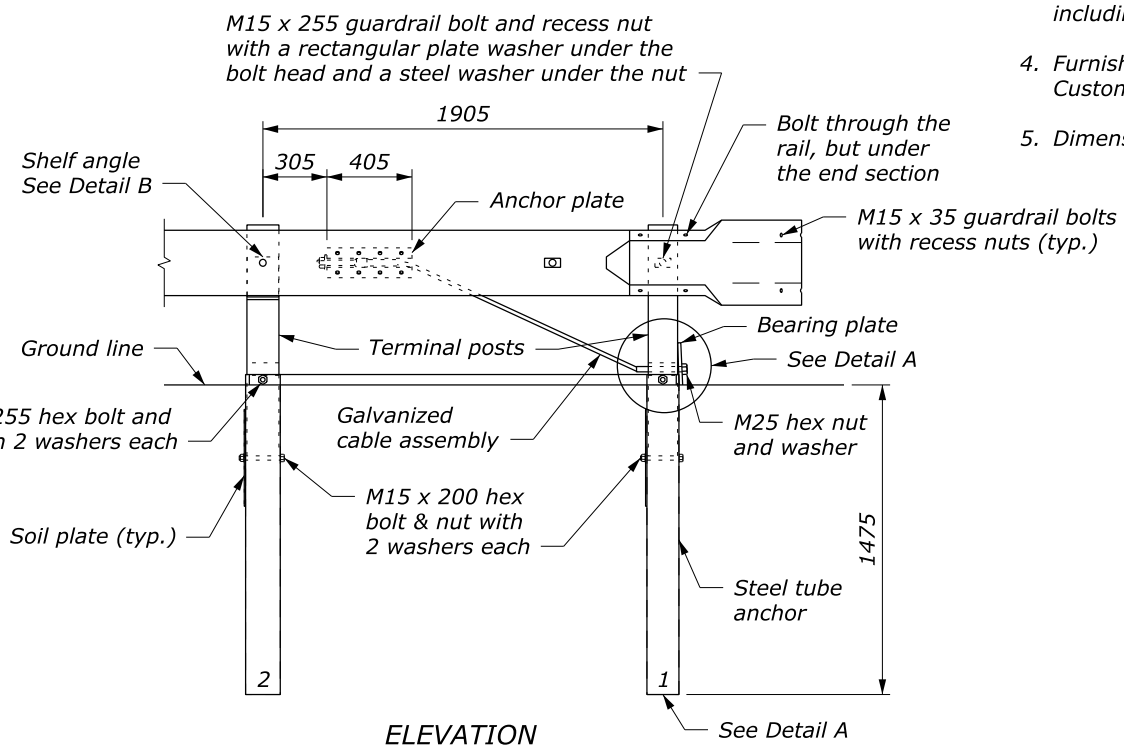
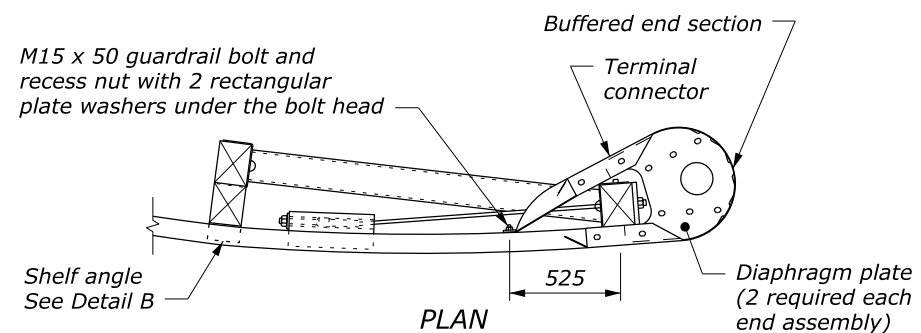
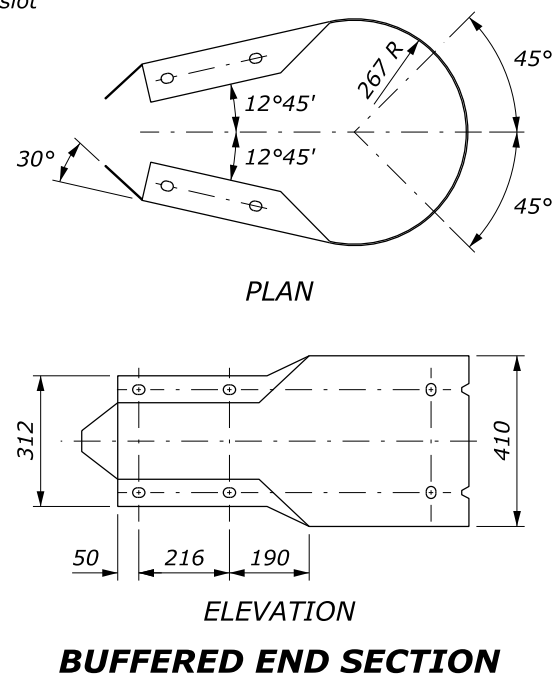
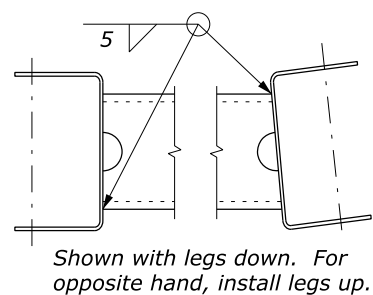
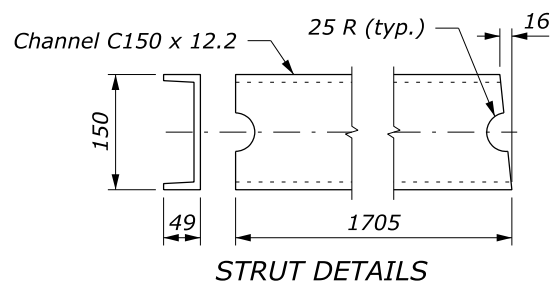
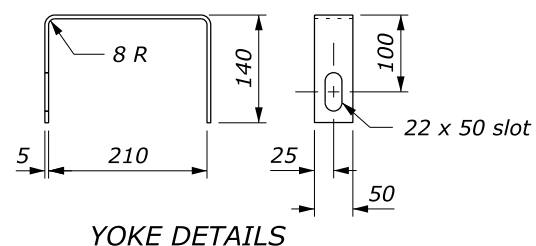
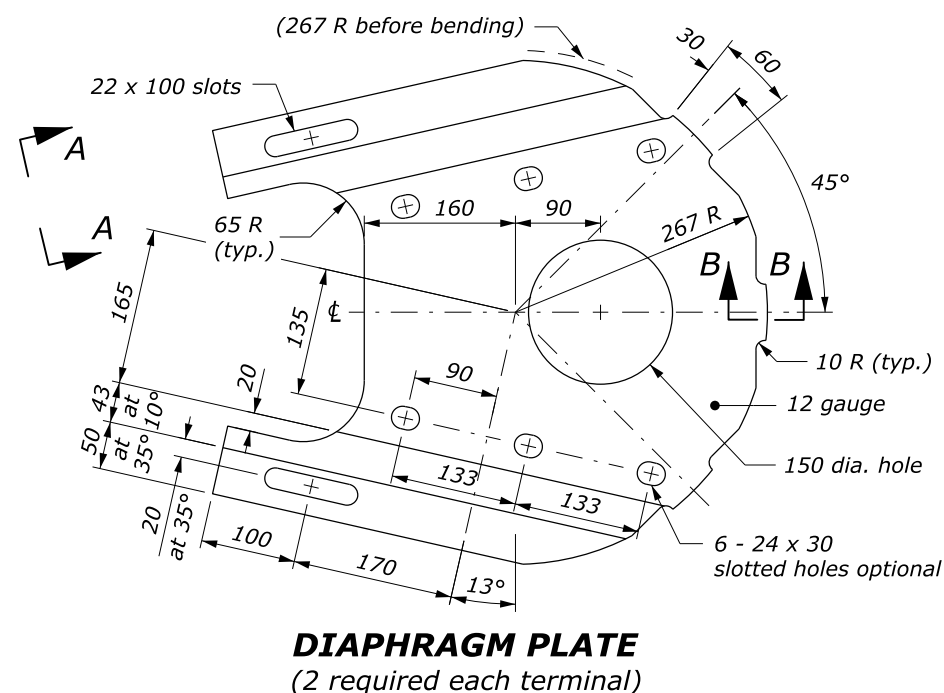
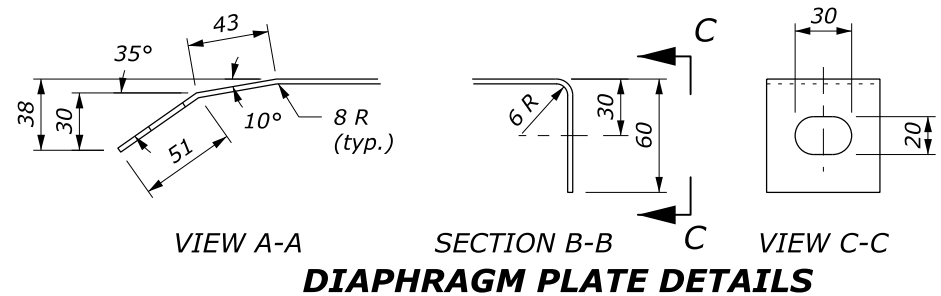


**BREAKAWAY LINE
POST AND BLOCK
POSTS #3 - #8**

**APPROACH & DEPARTURE FLARE
WITH MODIFIED ECCENTRIC LOADER TERMINAL**

NO SCALE

U.S. DEPARTMENT OF TRANSPORTATION FEDERAL HIGHWAY ADMINISTRATION FEDERAL LANDS HIGHWAY	
METRIC STANDARD G4 W-BEAM GUARDRAIL MODIFIED ECCENTRIC LOADER TERMINAL, TYPE MELT Sheet 1 of 2	
STANDARD APPROVED FOR USE 3/1996	STANDARD
REVISED: 12/1998 6/2005 DRAFT: 4/2016	M617-12



NOTE:

1. See Standard M617-15 for other details.
2. Extend bolts through the post and block, but not through the W-Beam rail for Posts #2-8. Extend bolts through the W-Beam rail for Posts #1 and #9.
3. Dimensional tolerances not shown or implied are intended to be those consistent with the proper functioning of the part, including its appearance, and accepted manufacturing practices.
4. Furnish hardware in metric sizes shown. Equivalent U.S. Customary sizes may be used when metric sizes are unavailable.
5. Dimensions without units are millimeters.

NO SCALE

U.S. DEPARTMENT OF TRANSPORTATION FEDERAL HIGHWAY ADMINISTRATION FEDERAL LANDS HIGHWAY	
METRIC STANDARD	
G4 W-BEAM GUARDRAIL MODIFIED ECCENTRIC LOADER TERMINAL, TYPE MELT	
Sheet 2 of 2	
STANDARD APPROVED FOR USE 3/1996	STANDARD
REVISED: 12/1998 6/2005	M617-12
DRAFT: 5/2014	