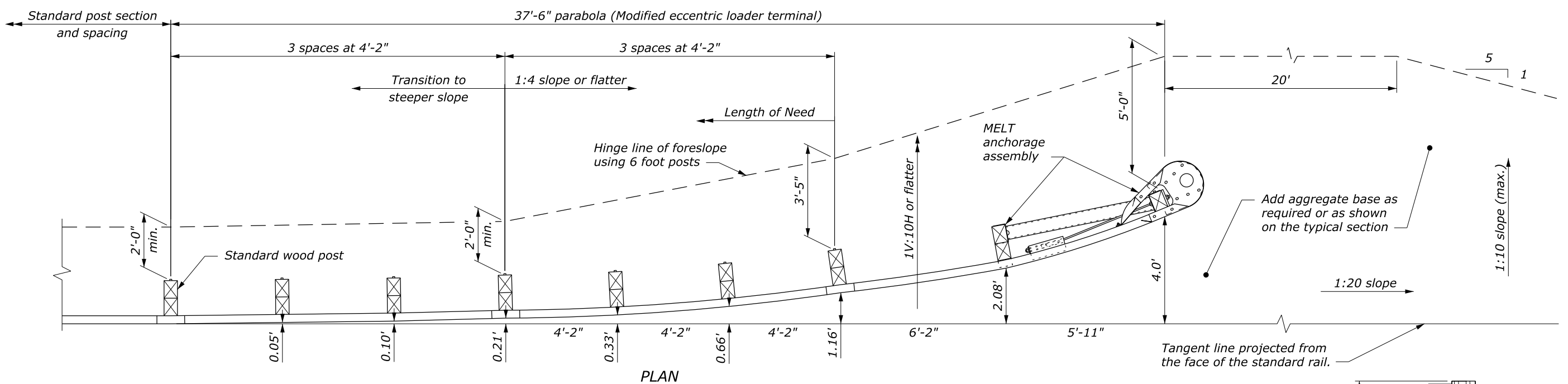
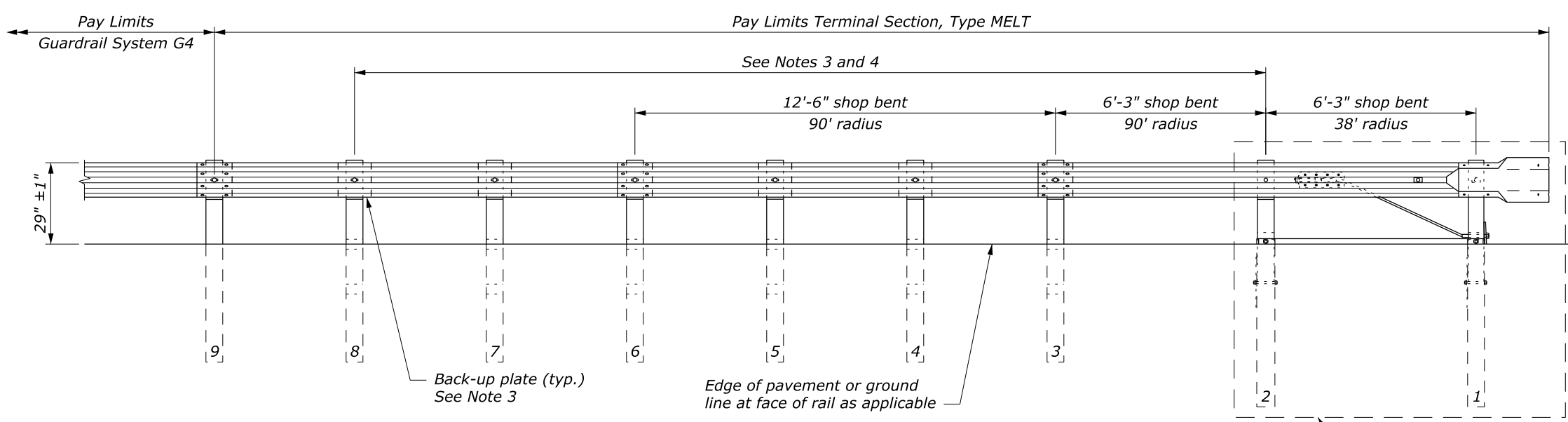


NOTE:

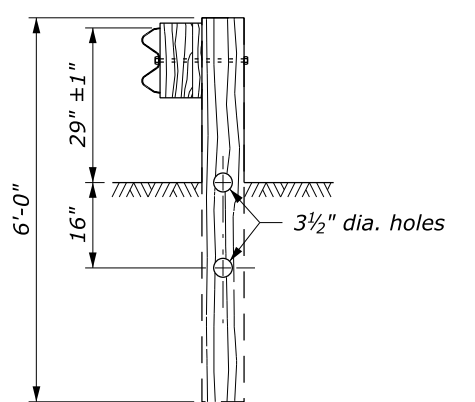
1. Do not use terminal where speeds are in excess of 45 MPH.
2. Extend bolts through the post and block, but not through the W beam rail for Posts #2-8. Extend bolts through the W-Beam rail for Posts #1 and #9.
3. Use Back-up plates on posts #4, 5, 7, and 8.
4. Use Shelf angle on post #2.



PLAN



ELEVATION



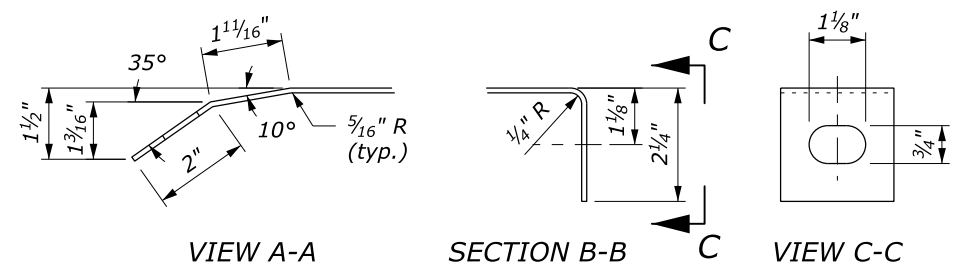
**BREAKAWAY LINE
POST AND BLOCK
POSTS #3 - #8**

**APPROACH & DEPARTURE FLARE
WITH MODIFIED ECCENTRIC LOADER TERMINAL**

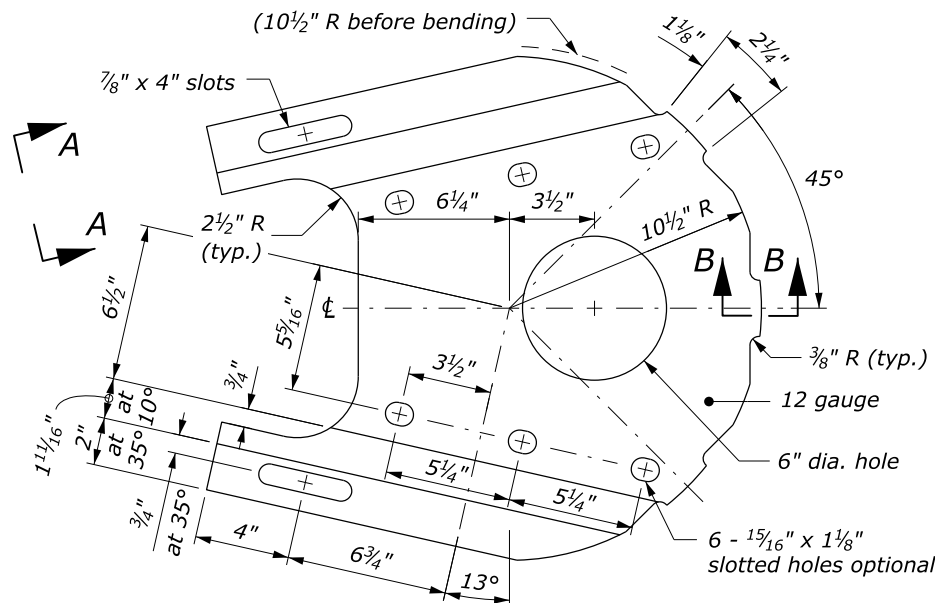
NO SCALE

| | |
|---|----------|
| U.S. DEPARTMENT OF TRANSPORTATION FEDERAL HIGHWAY ADMINISTRATION FEDERAL LANDS HIGHWAY | |
| U.S. CUSTOMARY STANDARD G4 W-BEAM GUARDRAIL MODIFIED ECCENTRIC LOADER TERMINAL, TYPE MELT Sheet 1 of 2 | |
| STANDARD APPROVED FOR USE 1/1994 | STANDARD |
| REVISED: 4/1994 6/2005 DRAFT: 4/2016 | 617-12 |

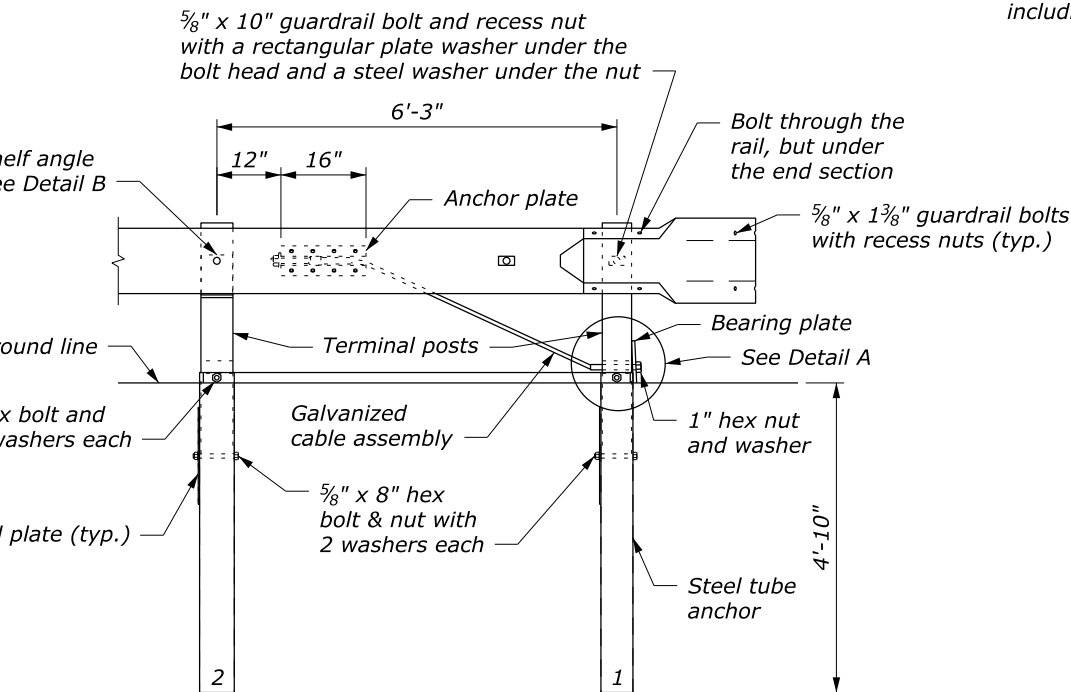
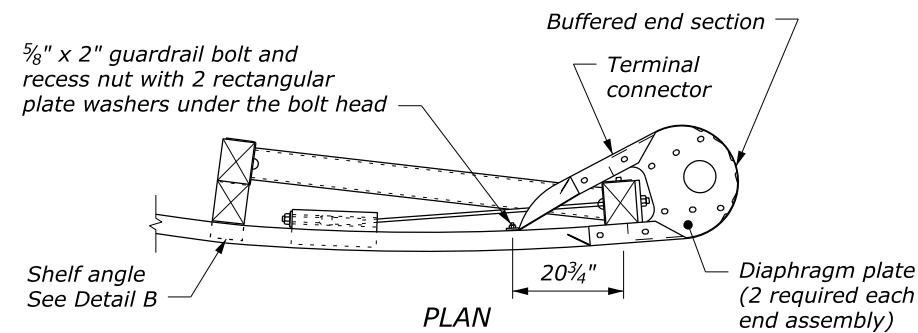
c:\myfiles\pw_production\dms67487\std617-12.dgn [USC] 13 April 2016 7:17 AM



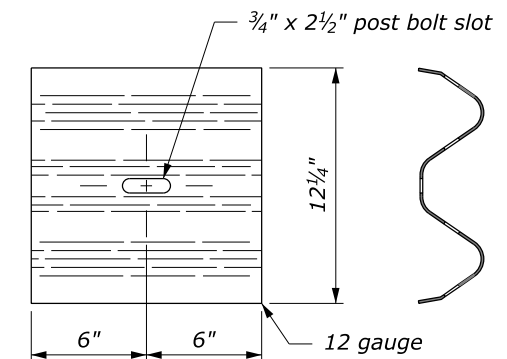
DIAPHRAGM PLATE DETAILS



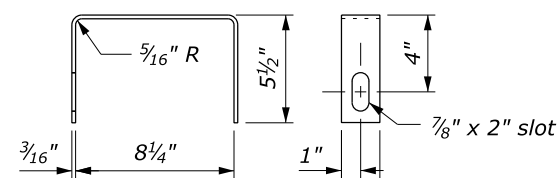
DIAPHRAGM PLATE
(2 required each terminal)



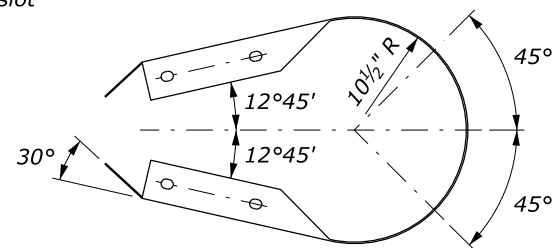
ANCHORAGE ASSEMBLY



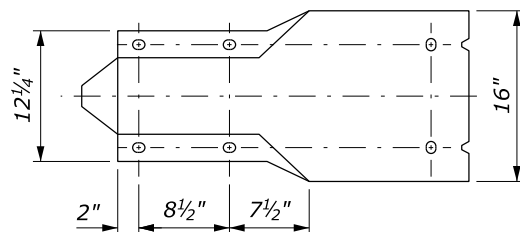
W-BEAM BACK UP PLATE
POSTS #4, 5, 7, & 8



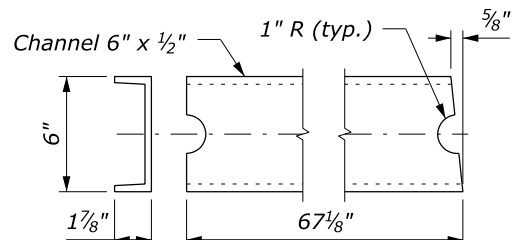
YOKE DETAILS



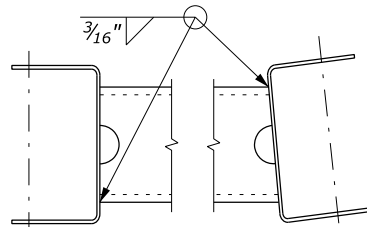
PLAN



BUFFERED END SECTION

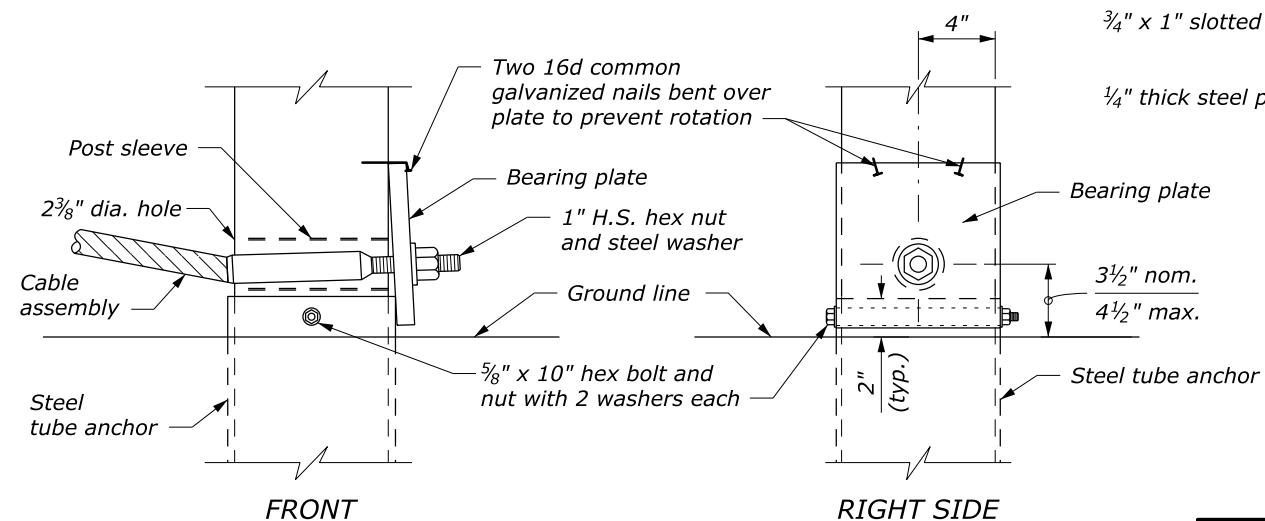


STRUT DETAILS



Shown with legs down. For opposite hand, install legs up.

STRUT AND YOKE ASSEMBLY



DETAIL A
POST #1 ASSEMBLY

DETAIL B
POST #2 SHELF ANGLE

NOTE:

1. See Standard 617-15 for other details.
2. Extend bolts through the post and block, but not through the W-Beam rail for Posts #2-8. Extend bolts through the W-Beam rail for Posts #1 and #9.
3. Dimensional tolerances not shown or implied are intended to be those consistent with the proper functioning of the part, including its appearance, and accepted manufacturing practices.

NO SCALE

| | |
|---|--------------------|
| U.S. DEPARTMENT OF TRANSPORTATION FEDERAL HIGHWAY ADMINISTRATION FEDERAL LANDS HIGHWAY | |
| U.S. CUSTOMARY STANDARD G4 W-BEAM GUARDRAIL MODIFIED ECCENTRIC LOADER TERMINAL, TYPE MELT Sheet 2 of 2 | |
| STANDARD APPROVED FOR USE 1/1994 REVISED: 4/1994 6/2005 DRAFT: 5/2014 | STANDARD 617-12 |