

DOMESTIC AIRLINE FARES CONSUMER REPORT

Third Report
First Quarter 1997 Passenger and Fare Information

September, 1997



U.S. Department of Transportation

FARE INFORMATION FOR CONSUMERS

Each month the Department of Transportation releases an [Air Travel Consumer Report](#) that includes information about various service quality elements, including flight delays, mishandled baggage, and oversales, and a variety of other types of consumer complaints.

In response to an increasing number of inquiries from consumers about domestic airline prices the Department decided to release a quarterly fare report. The first such report, for the third quarter of 1996, was released this past June. This is our third report, and is based on data for the first quarter of 1997.

The initial report provided information about average prices being paid by consumers in the 1,000 largest domestic city-pair markets within the 48 contiguous states. These markets account for about 75 percent of all 48-state passengers and 70 percent of total domestic passengers. The current report includes the same 1,000 city-pair markets, plus 61 new city pairs that were in the top 1,000 markets during the fourth quarter, and an additional 56 new city pairs that were in the top 1,000 markets during the first quarter.

Tables 1 through 4 contain the same information as our first two reports. As with the second report we have added at the end of the report as a special feature a further analysis of the markets that experienced significant increases or decreases in average fares.

For each market, in addition to the average one way fare, Table 1 shows the number of one way passenger trips per day, the nonstop distance, identifies the airline with the largest market share and its average fare, and identifies the carrier with the lowest average fare. Average fares are average prices paid by all fare paying passengers. It therefore covers first class fares paid to carriers offering such service but it does not cover free tickets, such as those awarded by carriers offering frequent flyer programs.

Airlines tend to offer a wide variety of prices in any given market and it is unlikely that the average fares from this report will be the same as any particular fare offered. Nevertheless, information about average fares charged, including fares charged by dominant carriers and lower-cost competing carriers where available, can provide useful consumer information. Also, how fares in particular markets compare with fares in other markets provides another source for a consumer to evaluate prices.

In particular, a high average fare in a market is an indication that a broad range of fares is available and that the number of seats sold at low fares are likely both very limited and subject to various travel restrictions. In such markets travelers must make extra efforts to get the lowest price for the service they want. Advice laid out in the fact sheet prepared by the Department's Aviation Consumer Protection Division—*Getting the Best Air Fare*—will help consumers accomplish this. This fact sheet can be obtained by requesting a copy at (202) 366-2220 or via the World Wide Web at: <http://www.dot.gov/ost/ogc/subject/consumer/aviation/publication/bestfare.html>.

To assist consumers in making average fare comparisons, Table 1 segregates the price information by mileage block, since distance is a major factor that affects the level of prices charged, and then sorts the markets within each mileage block by fare amount, from the highest average fare to the lowest. Consumers should understand that because carriers tend to offer a variety of prices in a market, carriers with higher average prices may offer some seats at prices as low as, or even lower, than carriers with much lower average prices.

The information contained in Table 1 reveals that in many markets the average fares are quite different from carrier-to-carrier. In some instances this reflects differences in service, such as connecting versus nonstop service, or service to different area airports. Note that the “lowest fare carrier” is the carrier with the lowest average fare that has at least a 10 percent share of the traffic in the market, except for markets where only a single carrier has a 10 percent or greater share. In such markets the carrier with the lowest average fare is identified even if its market share is less than 10 percent. In some markets the “market average” fare will be lower than the fare for the “lowest fare carrier” because several carriers that do not individually account for a 10 percent share can collectively account for a significant share. Often they charge lower average fares than individual carriers with greater market participation.

In Table 2, the data are summarized by city. The information provided includes the number of city-pair markets that involve each city (e.g., 9 for Burbank), the number of passengers traveling to and from each city, and the average fare, average fare per mile (yield), and average distance traveled. The data are sorted by distance.

Data are provided for markets that experienced changes in average fares of more than 33 percent compared with one year ago. Markets with large increases are shown in Table 3 and markets with large decreases are shown in Table 4. The information provided is average fares and the amount and percent change, and total passengers and the amount and percent change.

A special report on new entry effects of price and traffic in markets that experienced significant increases or decreases in average fares follows Table 4.

A key for carrier codes used in the report, as well as footnotes, are shown at the end of the report.

This report is also available at (<http://www.dot.gov/ost/aviation/>). Telephone inquiries should be referred to (202) 366-1032.

Market and Carrier Fare Information
Top 1,000 48 Contiguous State City Pair Markets
First Quarter 1997

Carrier Code Identifier and
Footnotes at End of Report

City Pair	Market Data			Largest Carrier			Lowest Fare Carrier		
	Nonstop Distance	Psgs Per Day	Avg. One Way Fare	Carrier	% Market Share	Avg One Way Fare	Carrier	% Market Share	Avg One Way Fare
Mileage Block--100-150 miles									
Aspen - Denver	125	170	118	ZW	93	119	UA	5	91
Portland, OR - Seattle	129	907	88	QX	44	108	YV	24	68
Albuquerque - Farmington	148	94	73	YV	100	73	YV	100	73
Los Angeles - San Diego	109	416	51	UA	43	51	AA	34	49
Mileage Block--151-200 miles									
Philadelphia - Richmond	198	174	259	US	98	259	US	98	259
Hartford - Philadelphia	196	284	239	US	97	242	RU	1	128
Atlanta - Columbia, SC	191	182	161	DL	74	190	WV	25	73
Baltimore - New York	185	378	135	US	57	130	US	57	130
New York - Syracuse	198	276	133	US	57	134	AA	14	91
Boston - New York	185	5959	129	DL	42	119	DL	42	119
Miami - Orlando	193	403	90	AA	86	94	NJ	6	33
Austin - Houston	152	1054	72	WN	76	71	WN	76	71
Chicago - Indianapolis	177	975	72	UA	47	85	WN	39	50
Austin - Dallas/Fr. Worth	183	2012	71	WN	74	68	WN	74	68
Corpus Christi - Houston	187	490	71	WN	73	70	WN	73	70
Houston - San Antonio	192	1050	68	WN	72	65	WN	72	65
Dallas/ Ft. Worth - Oklahoma City	181	769	66	WN	71	64	WN	71	64
Las Vegas - Ontario	197	1116	57	WN	97	57	WN	97	57
Reno - San Francisco	192	436	56	UA	100	56	UA	100	56
Oakland - Reno	180	553	52	WN	99	51	WN	99	51
Ft. Lauderdale - Orlando	178	933	48	WN	87	47	DL	13	44
Ft. Lauderdale - Tampa	197	1241	48	WN	92	47	WN	92	47
Reno - San Jose	188	749	46	WN	68	45	WN	68	45
Mileage Block--201-250 miles									
Detroit - Pittsburgh	201	208	257	US	54	256	US	54	256
Detroit - Milwaukee	238	258	232	NW	96	233	NW	96	233
Pittsburgh - Washington	202	293	230	US	98	229	US	98	229
Atlanta - Nashville	214	349	223	DL	99	223	DL	99	223
Atlanta - Charlotte	227	563	210	DL	62	215	US	34	199
Chicago - Dayton	240	197	203	UA	82	210	AA	15	160
Detroit - Indianapolis	231	454	183	NW	89	193	WN	7	81
Raleigh/Durham - Washington	227	413	167	JJ	58	166	JJ	58	166
New York - Washington	214	5197	130	DL	42	123	DL	42	123
Atlanta - Savannah	215	321	105	DL	87	109	J7	12	66
Las Vegas - Santa Ana	226	692	80	HP	98	79	HP	98	79
Miami - Tampa	204	242	76	AA	97	75	AA	97	75
Chicago - Detroit	233	3489	75	NW	42	73	WN	28	66
Indianapolis - St. Louis	229	336	69	WN	54	60	WN	54	60
Dallas/ Ft. Worth - Houston	235	5793	68	WN	73	65	WN	73	65
Albuquerque - El Paso	223	327	66	WN	81	68	F9	13	50
Harlingen - San Antonio	233	234	66	WN	99	66	WN	99	66
Dallas/ Ft. Worth - Tulsa	237	1205	65	WN	68	62	WN	68	62

**Carrier Code Identifier and
Footnotes at End of Report**

City Pair	Market Data			Largest Carrier			Lowest Fare Carrier		
	Nonstop Distance	Psgs Per Day	Avg. One Way Fare	Carrier	% Market Share	Avg One Way Fare	Carrier	% Market Share	Avg One Way Fare
Kansas City - Tulsa	223	220	64	WN	100	63	WN	100	63
Dallas/ Ft. Worth - San Antonio	248	2266	64	WN	73	61	WN	73	61
Burbank - Las Vegas	223	1852	59	WN	98	59	HP	2	55
Las Vegas - Los Angeles	236	4895	58	WN	51	56	WN	51	56
Kansas City - St. Louis	238	965	56	TW	54	58	WN	46	51
Seattle - Spokane	224	1782	52	WN	42	44	WN	42	44
Mileage Block--251-300 miles									
Chicago - Cincinnati	264	611	234	DL	56	240	UA	37	230
Buffalo - Philadelphia	279	180	222	US	90	231	US	90	231
Philadelphia - Rochester, NY	257	166	212	US	93	216	RU	2	114
Chicago - Des Moines	299	288	207	UA	84	213	NJ	4	84
New York - Portland, ME	285	110	199	RU	55	202	CO	40	196
Rochester, NW - Washington	296	210	187	US	60	196	UA	22	169
Milwaukee - Minneapolis	297	467	174	NW	98	173	NW	98	173
Buffalo - Washington	296	164	172	US	74	182	CO	7	107
Baltimore - Hartford	283	188	166	US	96	167	RU	2	100
Minneapolis - Omaha	282	216	165	NW	98	164	NW	98	164
Boston - Philadelphia	280	1507	163	US	97	163	US	97	163
New York - Norfolk	296	522	155	US	34	177	WV	23	89
Buffalo - New York	292	858	153	US	56	154	US	56	154
New York - Rochester, NY	254	563	149	US	62	142	US	62	142
Baton Rouge - Houston	253	156	145	RU	97	145	RU	97	145
Atlanta - Charleston, SC	259	286	145	DL	80	156	WV	17	86
New York - Richmond	278	523	142	CO	46	99	CO	46	99
Philadelphia - Pittsburgh	267	950	137	US	99	136	US	99	136
Cleveland - Indianapolis	261	209	122	CO	67	117	CO	67	117
Atlanta - Jacksonville	270	914	94	DL	74	103	J7	17	58
Atlanta - Valparaiso	264	157	80	EV	70	89	J7	28	52
San Francisco - Santa Barbara	262	296	79	UA	87	79	OE	12	75
Chicago - Columbus, OH	296	1551	76	UA	32	100	WN	30	57
Chicago - Louisville	271	795	73	WN	70	55	WN	70	55
Austin - Midland	290	199	73	WN	98	72	CO	1	69
Chicago - St. Louis	251	2453	70	WN	44	60	WN	44	60
Atlantic City - Boston	274	108	70	NK	93	61	NK	93	61
Austin - Harlingen	280	191	62	WN	97	62	WN	97	62
Little Rock - St. Louis	296	375	62	WN	65	56	WN	65	56
Harlingen - Houston	276	630	61	WN	92	60	WN	92	60
Burbank - San Jose	296	1247	61	WN	100	60	WN	100	60
Dallas/ Ft. Worth - Little Rock	296	1074	61	WN	75	58	WN	75	58
Dallas/ Ft. Worth - Lubbock	293	966	59	WN	84	57	WN	84	57
Las Vegas - Phoenix	256	2835	58	WN	78	54	WN	78	54
Las Vegas - San Diego	258	1896	57	WN	83	57	HP	16	56
Louisville - St. Louis	254	261	54	WN	61	50	WN	61	50
Boise - Salt Lake City	291	367	54	DL	54	59	WN	46	46
Boise - Spokane	287	329	52	WN	76	48	WN	76	48
Portland, OR - Spokane	279	656	51	WN	51	45	WN	51	45
Mileage Block--301-350 miles									
Atlanta - Greensboro	306	319	244	DL	86	246	US	6	186

**Carrier Code Identifier and
Footnotes at End of Report**

City Pair		Market Data			Largest Carrier			Lowest Fare Carrier		
		Nonstop Distance	Psgrs Per Day	Avg. One Way Fare	Carrier	% Market Share	Avg One Way Fare	Carrier	% Market Share	Avg One Way Fare
Charlotte	- Washington	327	339	230	US	96	231	US	96	231
Charlotte	- Nashville	329	212	221	US	94	219	US	94	219
Cleveland	- Washington	310	189	209	CO	85	207	US	2	181
Albany, NY	- Washington	318	173	198	US	90	202	AA	2	116
Philadelphia	- Raleigh/Durham	336	381	186	US	73	193	JI	25	168
Atlanta	- Jackson, MS	341	222	173	DL	93	173	NW	2	143
Cleveland	- Milwaukee	328	193	171	YX	57	185	CO	20	142
New York	- Pittsburgh	327	1299	165	US	75	175	AA	5	96
Boston	- Rochester, NY	343	219	161	US	93	160	CO	1	119
Chicago	- Minneapolis	345	2896	157	NW	62	131	NW	62	131
Columbus, OH	- Washington	322	383	153	US	51	152	US	51	152
Baltimore	- Columbus, OH	336	174	149	HP	74	144	HP	74	144
Hartford	- Washington	314	505	146	US	78	150	RU	1	85
Detroit	- Louisville	306	267	133	NW	78	139	WN	16	79
Albuquerque	- Denver	349	446	126	UA	70	132	F9	29	106
Phoenix	- Santa Ana	338	710	119	HP	98	119	HP	98	119
Atlanta	- Mobile	302	310	106	DL	82	115	J7	17	54
Atlanta	- Louisville	321	519	96	DL	70	106	J7	24	56
Burbank	- San Francisco	326	1510	85	UA	100	84	UA	100	84
Dallas/ Ft. Worth	- Wichita	328	269	84	AA	88	82	AA	88	82
Atlanta	- Memphis	332	1078	83	DL	56	97	J7	13	51
Houston	- New Orleans	303	2129	82	WN	63	76	WN	63	76
Los Angeles	- San Francisco	337	4249	82	UA	87	84	DL	9	56
Jacksonville	- Miami	334	234	75	AA	52	93	WV	47	53
Austin	- Lubbock	335	290	73	WN	96	73	CO	1	68
Omaha	- St. Louis	342	315	71	TW	54	89	WN	44	46
Birmingham	- New Orleans	321	340	70	WN	97	68	WN	97	68
Houston	- Mission/McAllen	316	325	69	CO	92	68	CO	92	68
Chicago	- Cleveland	311	2413	68	CO	34	65	WN	28	56
Boise	- Portland, OR	344	643	65	WN	62	51	WN	62	51
Kansas City	- Oklahoma City	312	393	63	WN	99	62	WN	99	62
Burbank	- Oakland	325	2141	62	WN	100	62	WN	100	62
San Jose	- Santa Ana	342	2165	62	QQ	54	66	WN	45	55
Dallas/ Ft. Worth	- Midland	319	716	61	WN	88	60	WN	88	60
El Paso	- Phoenix	347	642	61	WN	87	58	WN	87	58
Baltimore	- Cleveland	314	1170	60	CO	43	63	WN	43	53
Los Angeles	- San Jose	308	2702	59	WN	65	54	WN	65	54
Albuquerque	- Phoenix	328	1552	59	WN	80	56	WN	80	56
Los Angeles	- Oakland	337	3951	58	WN	67	55	WN	67	55
Ontario	- San Jose	333	930	57	WN	100	56	WN	100	56
Amarillo	- Dallas/Fr. Worth	324	797	56	WN	77	54	WN	77	54
Ft. Lauderdale	- Jacksonville	318	473	55	WN	81	49	WN	81	49
Ontario	- Phoenix	325	1520	55	WN	77	53	WN	77	53
Las Vegas	- Reno	345	1476	55	WN	62	53	WN	62	53
Phoenix	- San Diego	304	2066	53	WN	77	51	WN	77	51
Boise	- Reno	335	151	53	WN	98	51	WN	98	51
Baltimore	- Providence	328	1238	50	WN	73	46	WN	73	46
Mileage Block--351-400 miles										
Atlanta	- Cincinnati	373	343	267	DL	96	269	DL	96	269

**Carrier Code Identifier and
Footnotes at End of Report**

City Pair	Market Data			Largest Carrier			Lowest Fare Carrier		
	Nonstop Distance	Psgs Per Day	Avg. One Way Fare	Carrier	% Market Share	Avg One Way Fare	Carrier	% Market Share	Avg One Way Fare
Baltimore - Charlotte	360	223	248	US	94	249	DL	1	195
Charlotte - Pittsburgh	366	170	246	US	95	248	DL	1	217
Cleveland - Philadelphia	363	342	245	CO	54	229	CO	54	229
Detroit - Washington	399	698	234	NW	90	235	US	1	195
Philadelphia - Portland, ME	365	99	214	US	94	215	RU	2	161
Dayton - Washington	391	231	210	US	92	213	NW	2	197
Boston - Buffalo	396	223	205	US	85	215	CO	8	100
Providence - Washington	357	317	153	US	94	153	US	94	153
Baltimore - Boston	370	671	147	US	95	146	US	95	146
Atlanta - Raleigh/Durham	356	1061	142	DL	76	156	J7	18	72
Denver - Salt Lake City	391	1072	104	UA	44	98	UA	44	98
Baton Rouge - Dallas/Fr. Worth	383	211	101	DL	67	99	AA	29	97
Houston - Little Rock	391	325	91	WN	69	87	WN	69	87
Corpus Christi - Dallas/Fr. Worth	352	496	81	WN	66	77	WN	66	77
Chicago - Nashville	395	1079	80	WN	46	72	WN	46	72
Palm Springs - San Jose	390	176	77	QQ	66	70	QQ	66	70
Kansas City - Minneapolis	394	734	72	NW	84	70	NJ	14	59
Burbank - Reno	374	202	69	WN	88	68	UA	12	67
Ontario - Reno	394	229	68	WN	87	68	UA	12	65
Los Angeles - Reno	390	1183	66	QQ	58	70	WN	36	57
Oakland - Santa Ana	371	1715	64	WN	65	60	WN	65	60
Boise - Seattle	399	717	64	WN	60	48	WN	60	48
St. Louis - Tulsa	351	316	63	WN	55	55	WN	55	55
San Francisco - Santa Ana	372	1972	63	UA	75	65	QQ	23	52
Las Vegas - Sacramento	397	938	63	WN	92	62	WN	92	62
Ontario - San Francisco	363	903	62	UA	97	61	UA	97	61
Long Beach - Phoenix	355	468	59	HP	99	58	HP	99	58
Los Angeles - Sacramento	373	1940	59	WN	50	54	WN	50	54
Las Vegas - San Jose	386	1549	58	WN	64	56	WN	64	56
Oakland - Ontario	361	1525	57	WN	99	57	WN	99	57
Burbank - Phoenix	369	1124	57	WN	75	54	WN	75	54
Burbank - Sacramento	358	1528	56	WN	99	55	WN	99	55
Las Vegas - Salt Lake City	368	1204	56	WN	66	52	WN	66	52
San Diego - Tucson	367	450	55	WN	83	51	WN	83	51
Los Angeles - Phoenix	370	3562	55	WN	59	51	WN	59	51
Ontario - Sacramento	389	1564	55	WN	99	54	WN	99	54
Las Vegas - Tucson	365	691	50	WN	47	46	WN	47	46
Mileage Block--401-450 miles									
Charlotte - Philadelphia	447	373	259	US	94	261	DL	2	202
Hartford - Pittsburgh	406	160	254	US	93	260	RU	3	127
Chicago - Pittsburgh	412	601	240	US	58	239	UA	38	235
Baltimore - Detroit	408	281	234	NW	86	239	UA	3	122
Baltimore - Cincinnati	430	155	224	DL	75	240	US	11	189
Cincinnati - Washington	407	263	220	DL	91	221	NW	1	160
Cleveland - New York	412	1130	218	CO	88	220	AA	2	148
Charlotte - Indianapolis	428	109	218	US	93	219	NW	3	135
Minneapolis - St. Louis	449	458	198	NW	52	197	NW	52	197
Dallas/ Ft. Worth - Memphis	432	324	195	AA	55	188	NW	23	182
Columbus, OH - Philadelphia	405	348	190	US	64	200	HP	30	170

Carrier Code Identifier and
Footnotes at End of Report

City Pair		Market Data			Largest Carrier		Lowest Fare Carrier			
		Nonstop Distance	Psgs Per Day	Avg. One Way Fare	Carrier	% Market Share	Avg One Way Fare	Carrier	% Market Share	Avg One Way Fare
Atlanta	- Dayton	432	224	184	DL	90	188	US	5	99
Atlanta	- Baton Rouge	449	138	181	DL	85	187	NW	9	120
Nashville	- Raleigh/Durham	443	146	177	AA	53	163	US	26	150
Atlanta	- Indianapolis	432	378	175	DL	70	197	CO	7	89
New York	- Raleigh/Durham	427	1306	169	JI	45	165	US	25	152
Kansas City	- Milwaukee	436	175	168	YX	87	167	DL	1	156
Boston	- Washington	403	2611	160	US	70	178	UA	15	123
Dallas/ Ft. Worth	- Jackson, MS	408	157	136	DL	64	137	AA	33	127
Greenville, SC	- Orlando	449	187	133	FL	76	120	FL	76	120
Palm Springs	- San Francisco	421	226	116	AS	80	115	AS	80	115
Atlanta	- Orlando	403	1735	115	DL	72	131	J7	27	68
Atlanta	- Tampa	406	1684	115	DL	74	125	J7	23	73
Austin	- New Orleans	446	183	107	WN	57	103	WN	57	103
Atlanta	- Columbus, OH	446	630	106	DL	70	116	J7	23	68
Atlanta	- New Orleans	425	910	105	DL	71	116	J7	27	70
Sacramento	- Santa Ana	404	671	95	HP	97	94	HP	97	94
Amarillo	- Austin	412	156	95	WN	91	95	AA	8	89
Houston	- Oklahoma City	418	587	95	WN	57	89	WN	57	89
Dallas/ Ft. Worth	- New Orleans	437	1406	92	WN	64	84	WN	64	84
Houston	- Midland	440	494	92	WN	69	91	WN	69	91
Denver	- Wichita	419	287	88	NJ	45	60	NJ	45	60
Oklahoma City	- San Antonio	407	180	86	WN	71	88	AA	17	75
Detroit	- St. Louis	440	875	78	NW	44	79	WN	32	68
Chicago	- Omaha	416	726	75	UA	65	78	WN	32	62
Chicago	- Kansas City	405	1867	73	WN	46	68	WN	46	68
Las Vegas	- San Francisco	414	1756	73	UA	75	72	UA	75	72
Miami	- Tallahassee	403	204	70	YV	98	68	YV	98	68
Reno	- Santa Ana	415	461	68	QQ	85	67	WN	11	62
Las Vegas	- Oakland	407	1322	67	WN	95	67	WN	95	67
Columbus, OH	- St. Louis	410	333	67	TW	56	74	WN	42	52
Cleveland	- Nashville	448	442	65	WN	51	55	WN	51	55
Oakland	- San Diego	446	1568	63	WN	98	62	UA	2	58
San Diego	- San Jose	417	1971	62	WN	65	58	WN	65	58
San Diego	- San Francisco	447	2726	60	UA	56	66	WN	43	51
Reno	- Salt Lake City	422	291	57	WN	60	49	WN	60	49
Portland, OR	- Reno	444	982	47	QQ	43	49	AS	30	43
Mileage Block--451-500 miles										
Detroit	- Philadelphia	453	634	252	NW	64	247	NW	64	247
Detroit	- New York	496	1503	249	NW	68	264	CO	21	228
Cleveland	- Hartford	475	160	248	CO	89	244	CO	89	244
Chicago	- Memphis	491	387	232	UA	57	235	NW	35	233
Boston	- Richmond	475	131	231	US	72	231	CO	12	212
Atlanta	- Richmond	481	364	229	DL	90	230	US	7	208
Houston	- Memphis	485	169	219	NW	50	217	RU	34	212
Chicago	- Knoxville	475	157	216	UA	79	211	UA	79	211
Greensboro	- New York	461	594	212	US	51	213	CO	46	209
Buffalo	- Chicago	473	274	212	UA	46	221	AA	44	201
Boston	- Pittsburgh	496	524	212	US	89	218	US	89	218
Indianapolis	- Washington	498	332	203	US	77	215	AA	3	120

**Carrier Code Identifier and
Footnotes at End of Report**

City Pair	Market Data			Largest Carrier			Lowest Fare Carrier		
	Nonstop Distance	Psgs Per Day	Avg. One Way Fare	Carrier	% Market Share	Avg One Way Fare	Carrier	% Market Share	Avg One Way Fare
Atlanta - St. Louis	483	578	198	DL	48	208	TW	44	190
Charlotte - Orlando	468	309	185	US	91	184	US	91	184
Columbus, OH - New York	471	940	181	HP	37	173	HP	37	173
Boston - Norfolk	468	158	173	US	78	176	CO	4	134
Atlanta - Little Rock	453	187	171	DL	92	169	TW	2	145
Louisville - Washington	473	159	165	US	81	158	US	81	158
Detroit - Nashville	457	672	162	NW	81	174	WN	15	97
Newburgh - Raleigh/Durham	463	146	159	JI	91	160	US	6	103
Denver - Oklahoma City	495	235	139	UA	93	136	UA	93	136
Dallas/ Ft. Worth - Mission/McAllen	468	173	120	AA	73	126	CO	24	97
Denver - Omaha	472	514	116	UA	68	122	F9	31	99
Eugene - San Francisco	451	196	115	UA	92	113	UA	92	113
Houston - Tulsa	452	810	102	WN	58	96	WN	58	96
Chicago - Lincoln	467	103	100	UA	93	94	UA	93	94
Dallas/ Ft. Worth - Harlingen	458	400	94	WN	86	92	WN	86	92
Albuquerque - Salt Lake City	493	213	94	DL	61	101	WN	34	75
Dallas/ Ft. Worth - Kansas City	460	1108	93	AA	84	93	NJ	13	69
Jacksonville - Nashville	484	182	93	WN	74	82	WN	74	82
Birmingham - Tampa	460	243	92	WN	70	74	WN	70	74
San Antonio - Tulsa	484	144	92	WN	70	91	AA	15	86
New Orleans - San Antonio	495	271	88	WN	66	87	WN	66	87
El Paso - San Antonio	496	366	86	WN	92	87	CO	3	53
New Orleans - Tampa	487	497	84	WN	69	76	WN	69	76
Indianapolis - Kansas City	452	226	83	WN	66	73	WN	66	73
Cleveland - St. Louis	487	424	82	TW	49	86	WN	37	67
Birmingham - Orlando	478	223	81	WN	68	68	WN	68	68
Albuquerque - Las Vegas	487	766	80	WN	83	83	HP	17	62
Colorado Springs - Oklahoma City	458	191	76	W7	69	74	AA	15	55
Houston - Lubbock	472	350	74	WN	65	74	CO	31	72
Portland, OR - Sacramento	479	679	72	WN	66	65	WN	66	65
Kansas City - Louisville	492	126	72	WN	57	62	WN	57	62
Oklahoma City - St. Louis	462	302	69	TW	52	75	WN	47	61
Reno - San Diego	488	527	68	QQ	64	68	WN	31	63
Kansas City - Nashville	492	306	68	WN	74	58	WN	74	58
Nashville - New Orleans	471	411	62	WN	90	56	WN	90	56
Sacramento - San Diego	480	1548	58	WN	98	57	WN	98	57
Baltimore - Louisville	495	571	58	WN	65	52	WN	65	52
Los Angeles - Tucson	451	1279	52	WN	48	47	WN	48	47
Atlantic City - Detroit	497	136	33	NK	97	29	NK	97	29
Mileage Block--501-550 miles									
Detroit - Hartford	548	188	311	NW	90	310	NW	90	310
Indianapolis - Minneapolis	503	232	282	NW	85	288	AA	2	234
Detroit - White Plains	505	155	282	NW	96	282	NW	96	282
Detroit - Minneapolis	528	519	282	NW	94	286	UA	2	191
Cincinnati - Philadelphia	507	197	281	DL	86	280	NW	1	250
Charlotte - Detroit	501	216	277	NW	51	276	US	45	275
Detroit - Raleigh/Durham	501	165	264	NW	85	269	RU	1	146
Chicago - Rochester, NY	528	236	262	UA	54	281	AA	38	236
Charlotte - New York	537	888	257	US	82	260	CO	12	234

**Carrier Code Identifier and
Footnotes at End of Report**

City Pair		Market Data			Largest Carrier		Lowest Fare Carrier		
		Nonstop Distance	Psgs Per Day	Avg. One Way Fare	Carrier	% Market Share	Carrier	% Market Share	Avg One Way Fare
Charlotte	- Memphis	512	142	236	US	87	DL	9	232
Charlotte	- Tampa	508	263	212	US	89	DL	6	188
Dayton	- New York	534	236	208	CO	42	CO	42	196
Atlanta	- Pittsburgh	526	449	207	US	49	US	49	190
Atlanta	- Washington	540	2258	175	DL	69	J7	17	79
Greensboro	- Orlando	534	364	162	FL	63	US	18	129
Knoxville	- Orlando	532	208	157	FL	75	FL	75	151
Hartford	- Raleigh/Durham	532	177	156	JI	67	US	25	129
Atlanta	- Norfolk	516	336	134	DL	77	US	11	107
Denver	- Tulsa	541	264	134	UA	92	UA	92	131
Denver	- Kansas City	532	859	130	UA	66	NJ	30	102
Jacksonville	- Norfolk	544	138	127	US	71	DL	24	125
Baltimore	- Indianapolis	515	264	125	US	76	NW	4	101
Orlando	- Raleigh/Durham	534	360	125	JI	73	JI	73	119
Cleveland	- Providence	540	189	118	CO	66	WN	13	95
Atlanta	- West Palm Beach	545	726	118	DL	72	J7	20	75
Atlanta	- Ft. Myers	515	361	117	DL	74	J7	22	71
Boise	- San Francisco	522	250	114	UA	94	DL	5	98
Chicago	- Little Rock	544	315	103	WN	55	WN	55	95
Amarillo	- Houston	534	233	99	WN	91	WN	91	97
Austin	- El Paso	525	385	95	WN	92	CO	4	63
Jacksonville	- New Orleans	514	157	93	WN	66	WN	66	69
Colorado Springs	- Kansas City	538	188	83	W7	69	W7	69	71
Colorado Springs	- Tulsa	517	166	81	W7	72	W7	72	72
Atlanta	- Newport News	508	137	80	J7	89	J7	89	75
New Orleans	- Orlando	550	498	79	WN	84	WN	84	74
Portland, OR	- San Francisco	550	1200	76	UA	68	AS	30	68
Boise	- Las Vegas	520	245	75	WN	89	WN	89	72
Salt Lake City	- Spokane	546	211	75	DL	58	WN	40	64
Phoenix	- Salt Lake City	507	1572	74	WN	46	WN	46	69
Sacramento	- Salt Lake City	532	454	70	DL	71	WN	27	57
Oakland	- Portland, OR	543	862	70	AS	55	WN	44	65
Mileage Block--551-600 miles									
Chicago	- Greensboro	591	168	294	UA	74	US	12	258
Charlotte	- Chicago	599	453	284	US	56	US	56	277
Charlotte	- St. Louis	576	166	271	US	48	TW	45	263
Boston	- Cleveland	563	343	265	CO	89	US	4	252
Indianapolis	- Philadelphia	587	256	265	US	91	UA	2	171
Cincinnati	- New York	580	678	259	DL	73	CO	16	242
Pittsburgh	- St. Louis	554	140	247	TW	51	TW	51	240
Chicago	- Harrisburg	595	178	247	UA	64	AA	27	208
Atlanta	- Detroit	594	826	246	NW	49	NW	49	243
Dallas/ Ft. Worth	- Omaha	583	183	244	AA	74	TW	15	220
Cincinnati	- Minneapolis	597	202	230	NW	63	DL	32	221
Birmingham	- Dallas/Fr. Worth	597	189	220	AA	48	CO	16	157
Dallas/ Ft. Worth	- St. Louis	551	780	206	TW	52	TW	52	195
Atlanta	- Cleveland	554	525	200	CO	50	CO	50	177
Atlanta	- Baltimore	576	828	188	DL	57	US	39	150
Denver	- Des Moines	590	183	183	UA	61	NJ	35	103

**Carrier Code Identifier and
Footnotes at End of Report**

City Pair	Market Data			Largest Carrier			Lowest Fare Carrier		
	Nonstop Distance	Psgs Per Day	Avg. One Way Fare	Carrier	% Market Share	Avg One Way Fare	Carrier	% Market Share	Avg One Way Fare
Greenville, SC - New York	594	325	167	CO	32	185	WV	31	99
Nashville - Washington	561	256	165	US	77	159	US	77	159
Chicago - Greenville, SC	563	146	165	WV	45	106	WV	45	106
Atlanta - Miami	595	1098	147	DL	54	163	AA	32	121
Raleigh/Durham - Tampa	587	276	136	JI	72	131	JI	72	131
Chicago - Tulsa	585	338	131	AA	68	133	WN	27	118
Chicago - Wichita	588	242	127	UA	73	139	NJ	22	64
Myrtle Beach - New York	558	270	117	WV	56	101	WV	56	101
Birmingham - Chicago	570	372	117	WN	54	98	WN	54	98
Atlanta - Ft. Lauderdale	581	1486	117	DL	67	132	J7	30	77
Birmingham - Houston	570	412	107	WN	57	101	WN	57	101
Colorado Springs - Dallas/Fr. Worth	592	761	100	AA	64	100	W7	26	88
Salt Lake City - Santa Ana	588	470	96	DL	94	94	DL	94	94
Dallas/ Ft. Worth - El Paso	562	1088	93	WN	69	91	WN	69	91
Albuquerque - Dallas/Fr. Worth	580	1211	88	WN	72	82	WN	72	82
Salt Lake City - San Jose	585	456	88	DL	91	89	WN	7	58
Colorado Springs - Phoenix	551	671	81	W7	55	68	W7	55	68
El Paso - Las Vegas	584	440	79	WN	70	84	HP	30	64
Baltimore - Nashville	587	551	79	WN	82	72	WN	82	72
Salt Lake City - San Francisco	599	737	77	DL	68	75	UA	29	74
Ontario - Salt Lake City	558	497	76	DL	80	75	WN	17	71
Los Angeles - Salt Lake City	590	2002	75	DL	55	80	WN	41	65
Portland, OR - San Jose	569	1102	70	AS	64	74	WN	31	60
Oakland - Salt Lake City	588	765	68	WN	56	63	WN	56	63
Reno - Spokane	572	181	63	WN	81	63	AS	12	58
Reno - Seattle	564	1300	51	AS	46	47	AS	46	47
Mileage Block--601-650 miles									
Chicago - Richmond	642	216	297	UA	78	302	NW	3	239
Detroit - Memphis	610	151	291	NW	93	292	DL	2	217
Boston - Detroit	632	532	289	NW	87	296	CO	2	143
Columbus, OH - Minneapolis	628	154	274	NW	78	286	UA	5	211
Charlotte - Hartford	644	146	272	US	89	279	DL	3	196
Cleveland - Minneapolis	622	245	267	NW	71	280	CO	17	244
Grand Rapids - New York	613	154	240	NW	42	239	UA	14	223
Indianapolis - New York	645	620	234	CO	42	237	CO	42	237
Chicago - Syracuse	608	168	230	UA	46	241	AA	37	206
Dallas/ Ft. Worth - Nashville	631	439	221	AA	69	228	DL	20	223
Chicago - Washington	607	1714	218	UA	70	224	AA	23	184
Knoxville - New York	643	127	206	DL	54	199	DL	54	199
Boston - Raleigh/Durham	612	384	198	JI	60	211	US	22	188
Charlotte - Ft. Lauderdale	632	173	192	US	86	193	DL	7	192
Milwaukee - Washington	634	239	183	YX	68	184	NW	14	164
Boston - Columbus, OH	640	332	176	HP	58	159	HP	58	159
Boise - Denver	650	148	174	UA	76	179	DL	19	152
Dallas/ Ft. Worth - Denver	641	1408	173	AA	48	178	UA	43	160
Chicago - Raleigh/Durham	647	626	160	AA	63	155	AA	63	155
Birmingham - Detroit	626	137	158	NW	44	150	WN	22	122
Jacksonville - Washington	634	301	156	US	70	153	US	70	153
Detroit - Kansas City	630	417	148	NW	67	168	WN	23	95

**Carrier Code Identifier and
Footnotes at End of Report**

City Pair	Market Data			Largest Carrier			Lowest Fare		
	Nonstop Distance	Psgs Per Day	Avg. One Way Fare	Carrier	% Market Share	Avg One Way Fare	Carrier	% Market Share	Avg One Way Fare
New Orleans - St. Louis	604	284	146	TW	70	153	WN	20	122
Denver - Tucson	639	272	144	UA	73	141	UA	73	141
Dallas/ Ft. Worth - Des Moines	624	163	142	AA	72	132	AA	72	132
Columbia, SC - New York	614	287	141	WV	49	105	WV	49	105
Charleston, SC - New York	628	351	131	CO	34	133	WV	27	107
Houston - Kansas City	643	476	124	CO	47	130	WN	44	114
Atlanta - Chicago	606	2838	123	UA	32	102	UA	32	102
Albuquerque - Austin	614	174	114	WN	62	105	WN	62	105
Albuquerque - San Antonio	609	191	113	WN	71	112	AA	13	109
Detroit - Myrtle Beach	637	131	113	NK	61	102	NK	61	102
Nashville - Tampa	612	355	112	WN	72	90	WN	72	90
Columbus, OH - Kansas City	634	156	105	WN	49	96	WN	49	96
El Paso - San Diego	636	192	104	WN	92	101	WN	92	101
Albuquerque - Ontario	632	163	103	WN	72	97	WN	72	97
Albuquerque - San Diego	628	346	101	WN	88	99	WN	88	99
Denver - Phoenix	602	2075	98	UA	55	95	UA	55	95
Phoenix - San Jose	621	1221	93	WN	49	75	WN	49	75
Baltimore - Chicago	611	2311	92	WN	44	77	WN	44	77
Salt Lake City - Tucson	602	177	90	DL	57	90	HP	24	85
Nashville - Orlando	616	637	89	DL	56	91	WN	41	80
Phoenix - Sacramento	647	829	82	WN	58	75	WN	58	75
Portland, OR - Salt Lake City	630	676	81	DL	70	83	WN	27	67
Sacramento - Spokane	650	125	81	WN	68	74	WN	68	74
Oakland - Phoenix	646	992	80	WN	64	74	WN	64	74
Phoenix - Reno	601	563	77	WN	55	73	WN	55	73
Denver - Las Vegas	629	1711	76	UA	61	76	HP	12	59
Sacramento - Seattle	605	853	72	AS	60	76	WN	36	61
Salt Lake City - San Diego	626	902	71	DL	62	75	WN	33	62
Colorado Springs - Las Vegas	604	665	66	QQ	42	74	W7	21	56
Mileage Block--651-700 miles									
Allentown - Chicago	655	129	268	UA	89	265	NW	1	255
Minneapolis - Nashville	696	149	258	NW	86	254	TW	4	232
Louisville - New York	656	281	237	US	48	234	US	48	234
Chicago - Philadelphia	678	1537	237	UA	53	244	AA	23	216
Atlanta - Houston	693	857	233	DL	49	239	CO	41	225
Milwaukee - Philadelphia	691	184	213	YX	63	216	NW	11	180
Atlanta - Tulsa	675	162	198	DL	76	207	CO	4	87
Charlotte - Miami	651	179	185	US	88	186	DL	6	165
Chicago - Columbia, SC	667	122	180	DL	44	214	WV	27	118
Nashville - Philadelphia	675	272	178	US	82	176	CO	4	143
Miami - Raleigh/Durham	700	144	177	AA	72	163	AA	72	163
Miami - New Orleans	674	259	173	AA	85	170	AA	85	170
Atlanta - Milwaukee	669	312	158	DL	54	155	DL	54	155
Orlando - Richmond	668	235	154	FL	52	151	US	33	139
Memphis - Tampa	657	179	148	NW	76	145	NW	76	145
Ft. Lauderdale - Raleigh/Durham	680	231	147	JI	75	142	J7	5	118
Memphis - Orlando	683	332	135	NW	72	140	DL	15	129
Kansas City - New Orleans	691	186	135	TW	28	125	WN	23	124
Chicago - Oklahoma City	693	258	135	AA	50	140	WN	26	121

Carrier Code Identifier and
Footnotes at End of Report

City Pair		Market Data			Largest Carrier		Lowest Fare Carrier			
		Nonstop Distance	Psgrs Per Day	Avg. One Way Fare	Carrier	% Market Share	Avg One Way Fare	Carrier	% Market Share	Avg One Way Fare
Norfolk	- Orlando	656	255	134	FL	52	139	US	34	119
Ft. Lauderdale	- New Orleans	673	256	129	WN	74	117	WN	74	117
Baltimore	- Jacksonville	663	329	125	US	61	136	WN	31	94
El Paso	- Houston	677	407	123	WN	66	121	WN	66	121
Atlanta	- Kansas City	693	618	118	DL	79	119	NJ	15	85
Atlanta	- Philadelphia	665	1788	116	DL	53	119	US	36	105
Cleveland	- Kansas City	695	235	113	CO	72	111	WN	17	92
El Paso	- Ontario	671	121	106	WN	78	104	WN	78	104
Houston	- St. Louis	687	810	105	WN	51	95	WN	51	95
Houston	- Nashville	670	597	104	WN	66	96	WN	66	96
Denver	- Minneapolis	680	1196	102	NW	56	97	NW	56	97
Boise	- Los Angeles	675	212	98	WN	48	92	WN	48	92
Albuquerque	- Los Angeles	677	894	93	WN	69	90	WN	69	90
Baltimore	- Birmingham	682	325	86	WN	69	78	WN	69	78
Phoenix	- San Francisco	651	1814	79	UA	37	82	WN	31	69
San Francisco	- Seattle	678	2150	77	UA	62	79	AS	36	69
Salt Lake City	- Seattle	689	944	76	DL	62	78	WN	35	64
Oakland	- Seattle	671	1348	70	AS	61	72	WN	38	62
San Jose	- Seattle	697	1294	68	AS	64	71	WN	23	52
Mileage Block--701-750 miles										
Chicago	- White Plains	738	440	309	UA	69	315	AA	24	287
St. Louis	- Washington	715	352	299	TW	88	298	AA	2	194
Memphis	- Minneapolis	701	141	285	NW	92	289	UA	1	157
Albany, NY	- Chicago	724	151	273	UA	49	284	AA	35	244
Boston	- Charlotte	727	305	268	US	89	272	CO	2	174
Minneapolis	- Pittsburgh	727	154	259	NW	53	268	US	40	239
Atlanta	- Dallas/Fr. Worth	732	1957	223	DL	59	236	AA	35	201
Milwaukee	- New York	733	527	222	YX	70	238	CO	2	154
Chicago	- Norfolk	718	209	218	UA	64	229	US	15	185
Chicago	- New York	726	6063	216	UA	45	226	CO	12	164
Dallas/ Ft. Worth	- Louisville	734	197	215	DL	47	232	AA	35	202
Atlanta	- Rochester, NY	750	158	212	DL	70	214	US	19	196
Atlanta	- Buffalo	713	141	197	DL	73	196	DL	73	196
Jacksonville	- Philadelphia	742	278	161	US	81	163	J7	4	101
Austin	- St. Louis	718	182	144	TW	61	151	WN	24	121
New York	- Savannah	719	293	144	WV	42	102	WV	42	102
Vail	- Los Angeles	748	166	133	AA	62	125	AA	62	125
Indianapolis	- New Orleans	710	145	127	WN	33	121	NW	16	116
Kansas City	- San Antonio	706	187	124	AA	46	111	AA	46	111
Chicago	- Myrtle Beach	739	138	120	WV	60	106	WV	60	106
Albuquerque	- Kansas City	718	160	115	WN	61	117	AA	18	84
Colorado Springs	- San Antonio	732	175	109	AA	30	115	W7	26	74
Albuquerque	- Houston	744	460	109	CO	47	116	WN	46	97
El Paso	- Los Angeles	714	405	107	WN	91	106	WN	91	106
Boise	- Phoenix	736	218	102	WN	55	97	WN	55	97
Baltimore	- St. Louis	737	856	100	TW	56	104	WN	34	84
Colorado Springs	- Minneapolis	726	149	99	NW	80	94	NW	80	94
San Francisco	- Spokane	734	159	99	UA	81	98	DL	2	81
San Jose	- Tucson	722	232	97	QQ	43	95	QQ	43	95

Carrier Code Identifier and
Footnotes at End of Report

City Pair	Market Data			Largest Carrier			Lowest Fare Carrier		
	Nonstop Distance	Psgs Per Day	Avg. One Way Fare	Carrier	% Market Share	Avg One Way Fare	Carrier	% Market Share	Avg One Way Fare
Louisville - Tampa	728	263	96	WN	43	84	WN	43	84
Louisville - Orlando	718	412	92	DL	61	94	WN	23	83
Oakland - Tucson	747	241	89	WN	82	87	WN	82	87
Oakland - Spokane	724	158	79	WN	81	75	WN	81	75
Mileage Block--751-800 miles									
Boston - Cincinnati	752	286	295	DL	86	306	AA	2	130
Chicago - Hartford	783	510	275	UA	50	286	AA	41	262
Nashville - New York	763	660	249	AA	47	244	AA	47	244
Dallas/ Ft. Worth - Indianapolis	762	341	237	AA	71	250	US	2	172
Atlanta - New York	754	4090	213	DL	55	246	CO	33	162
Austin - Denver	769	243	199	UA	62	195	UA	62	195
Memphis - Washington	762	290	197	NW	74	196	J7	6	109
Cincinnati - Orlando	756	370	173	DL	51	180	FL	42	172
Cincinnati - Tampa	773	227	166	DL	90	168	TW	2	99
Houston - Omaha	783	135	160	CO	39	155	WN	20	128
Charleston, SC - Chicago	761	167	153	DL	44	172	WV	17	107
Atlanta - Oklahoma City	762	192	151	DL	78	155	NW	7	89
Denver - San Antonio	794	316	150	UA	65	143	UA	65	143
St. Louis - San Antonio	786	307	138	TW	65	150	WN	24	107
Houston - Tampa	787	461	131	CO	71	131	WN	19	113
Houston - Louisville	789	194	122	CO	57	124	WN	21	110
Orlando - Washington	758	1585	117	DL	53	109	DL	53	109
Denver - St. Louis	770	800	117	TW	43	119	F9	19	101
Ft. Lauderdale - Nashville	793	274	116	WN	77	101	WN	77	101
Austin - Nashville	754	156	104	WN	64	97	WN	64	97
Colorado Springs - Ontario	791	112	103	HP	33	125	W7	29	69
Baltimore - Orlando	787	1245	100	US	63	104	WN	32	86
San Francisco - Tucson	752	191	98	HP	65	92	HP	65	92
Las Vegas - Midland	796	184	88	WN	98	87	WN	98	87
Las Vegas - Lubbock	776	176	86	WN	96	85	WN	96	85
Amarillo - Las Vegas	759	172	82	WN	97	81	WN	97	81
Las Vegas - Portland, OR	762	1055	77	AS	43	74	HP	17	73
Mileage Block--801-850 miles									
Philadelphia - St. Louis	813	256	324	TW	81	330	AA	2	199
Boston - Indianapolis	818	189	271	US	66	285	UA	9	206
Cincinnati - Dallas/Fr. Worth	812	311	258	DL	66	281	AA	26	197
Charlotte - Kansas City	810	102	244	US	82	245	TW	5	161
Chicago - Dallas/Fr. Worth	802	2176	239	AA	70	243	AA	70	243
Chicago - Manchester	844	119	236	UA	89	233	US	7	214
Jacksonville - New York	821	645	217	CO	48	235	US	35	196
Dallas/ Ft. Worth - Tucson	813	179	205	AA	76	207	DL	13	187
Denver - Spokane	837	114	197	UA	75	194	DL	18	188
Madison - New York	809	127	193	NW	28	169	NW	28	169
Atlanta - Omaha	822	155	183	DL	66	197	UA	14	131
Denver - Santa Ana	846	492	176	UA	84	179	QQ	5	129
Detroit - Jacksonville	815	190	163	NW	76	161	WN	2	121
Atlanta - Austin	812	304	162	DL	79	164	NW	2	90
Houston - Jacksonville	818	181	148	CO	63	147	WN	15	112

Carrier Code Identifier and
Footnotes at End of Report

City Pair		Market Data			Largest Carrier		Lowest Fare Carrier			
		Nonstop Distance	Psgs Per Day	Avg. One Way Fare	Carrier	% Market Share	Avg One Way Fare	Carrier	% Market Share	Avg One Way Fare
Orlando	- Pittsburgh	834	596	144	US	91	143	US	91	143
Dayton	- Orlando	809	292	142	FL	57	161	DL	16	112
Denver	- Ontario	819	269	141	UA	78	133	UA	78	133
Houston	- Indianapolis	846	293	140	CO	62	139	WN	21	117
Chicago	- New Orleans	837	864	139	UA	36	138	WN	21	119
Tampa	- Washington	813	881	135	US	64	135	US	64	135
Chicago	- Providence	849	538	128	UA	36	133	WN	34	98
Miami	- Nashville	806	167	126	AA	56	106	AA	56	106
Oklahoma City	- Phoenix	833	277	126	WN	78	121	WN	78	121
Baltimore	- Tampa	842	854	112	US	61	118	WN	29	91
Phoenix	- San Antonio	843	366	110	WN	53	107	WN	53	107
Burbank	- Portland, OR	817	309	105	AS	71	105	WN	17	95
Los Angeles	- Portland, OR	834	1267	105	AS	39	102	WN	10	91
Ontario	- Portland, OR	838	435	102	AS	68	103	WN	20	97
Denver	- Reno	805	285	100	UA	54	99	QQ	42	94
Colorado Springs	- Los Angeles	833	471	98	W7	67	88	W7	67	88
Las Vegas	- Spokane	807	210	97	WN	54	91	WN	54	91
Indianapolis	- Tampa	838	730	97	US	33	101	TZ	31	89
Nashville	- San Antonio	823	205	95	WN	62	89	WN	62	89
Indianapolis	- Orlando	828	1084	95	DL	35	97	US	26	91
Columbus, OH	- Tampa	829	676	94	HP	38	94	WN	20	82
Columbus, OH	- Orlando	802	837	93	HP	39	92	WN	11	82
Colorado Springs	- San Diego	817	260	92	W7	61	83	W7	61	83
Colorado Springs	- Houston	809	815	86	CO	68	88	W7	15	82
Mileage Block--851-900 miles										
New York	- St. Louis	882	923	291	TW	72	302	CO	15	253
Birmingham	- New York	860	198	288	DL	59	309	US	25	264
Atlanta	- Hartford	859	401	264	DL	78	278	UA	1	175
Cincinnati	- Houston	885	163	261	DL	77	264	NW	3	144
Dallas/ Ft. Worth	- Milwaukee	854	258	250	YX	72	255	TW	4	180
Boston	- Milwaukee	861	226	242	YX	68	250	NW	13	222
Boston	- Chicago	867	1745	239	UA	53	242	AA	36	226
Dallas/ Ft. Worth	- Minneapolis	852	739	233	NW	54	229	NW	54	229
Memphis	- Philadelphia	875	162	233	NW	75	230	DL	11	207
Dallas/ Ft. Worth	- Dayton	861	155	230	AA	70	224	TW	11	208
Dallas/ Ft. Worth	- Phoenix	868	933	222	AA	55	232	HP	30	208
Atlanta	- San Antonio	874	294	214	DL	70	244	CO	15	122
Albany, NY	- Atlanta	853	163	213	DL	86	211	NW	1	128
Denver	- Milwaukee	896	235	205	YX	46	209	ZW	35	192
Akron	- Orlando	861	268	186	FL	61	235	US	23	113
Denver	- Houston	861	893	182	UA	47	171	UA	47	171
Cincinnati	- Ft. Myers	880	166	164	DL	85	168	NW	5	116
Chicago	- Jacksonville	866	414	153	UA	45	156	WN	13	109
Pittsburgh	- Tampa	873	442	151	US	87	152	NW	2	84
Chicago	- Denver	888	2305	145	UA	66	148	AA	18	139
Ft. Myers	- Washington	892	316	142	US	53	149	AA	12	126
Washington	- West Palm Beach	857	624	138	US	72	138	US	72	138
Cleveland	- Orlando	895	633	138	CO	68	140	US	12	133
Orlando	- St. Louis	880	609	137	TW	70	138	WN	17	113

**Carrier Code Identifier and
Footnotes at End of Report**

City Pair		Market Data			Largest Carrier			Lowest Fare Carrier		
		Nonstop Distance	Psgs Per Day	Avg. One Way Fare	Carrier	% Market Share	Avg One Way Fare	Carrier	% Market Share	Avg One Way Fare
Daytona Beach	- New York	884	283	137	CO	49	130	US	16	128
Houston	- Orlando	853	744	136	CO	66	137	WN	19	109
St. Louis	- Tampa	869	542	135	TW	64	142	WN	24	110
Baltimore	- West Palm Beach	883	276	131	US	83	128	US	83	128
Harrisburgh	- Orlando	852	248	125	US	57	99	US	57	99
Denver	- Los Angeles	862	2234	122	UA	82	121	F9	11	109
Austin	- Phoenix	868	476	122	WN	54	113	WN	54	113
Albuquerque	- San Jose	871	198	122	WN	49	113	WN	49	113
Ft. Lauderdale	- Washington	900	899	120	US	57	122	KW	19	96
Albuquerque	- Oakland	890	170	117	WN	69	113	UA	11	102
Denver	- San Diego	853	959	116	UA	78	114	F9	14	110
Albuquerque	- San Francisco	896	379	116	WN	76	116	UA	12	111
Portland, OR	- Santa Ana	859	485	115	AS	73	117	WN	8	93
Orlando	- Philadelphia	861	1793	114	US	58	116	DL	37	111
Palm Springs	- Portland, OR	873	222	111	AS	88	107	AS	88	107
Ft. Lauderdale	- Louisville	897	171	111	DL	43	120	J7	11	88
Atlantic City	- Orlando	852	126	97	NK	89	90	NK	89	90
Indianapolis	- Sarasota	877	264	94	TZ	68	92	TZ	68	92
Las Vegas	- Seattle	866	1601	79	AS	47	79	WN	26	73
Mileage Block--901-950 miles										
Baltimore	- Minneapolis	937	171	313	NW	80	320	CO	1	153
Charlotte	- Minneapolis	931	139	307	NW	51	301	NW	51	301
Charlotte	- Houston	914	199	285	US	80	285	TW	1	178
Minneapolis	- Washington	927	614	285	NW	86	293	AA	2	172
Chicago	- Portland, ME	901	88	284	UA	82	276	US	4	221
Atlanta	- Boston	946	1123	272	DL	64	321	J7	9	91
Charlotte	- Dallas/Fr. Worth	937	446	267	AA	51	265	US	39	254
Columbus, OH	- Dallas/Fr. Worth	927	329	258	AA	74	266	US	2	161
Atlanta	- Providence	904	205	239	DL	79	250	CO	4	141
Denver	- San Jose	948	477	236	UA	81	249	QQ	10	128
Allentown	- Orlando	907	286	212	FL	54	293	US	36	109
Bloomington, IL	- Orlando	937	169	205	FL	93	208	AA	2	142
Kansas City	- Washington	950	442	204	US	67	197	TW	9	168
Denver	- Sacramento	910	272	198	UA	81	197	DL	11	181
Dallas/ Ft. Worth	- Tampa	929	687	187	AA	62	191	DL	30	179
Cincinnati	- Miami	949	156	186	DL	79	193	AA	5	113
Boston	- Nashville	944	189	180	US	42	185	CO	12	141
Miami	- Washington	920	829	178	AA	76	175	AA	76	175
Detroit	- New Orleans	927	231	174	NW	70	180	UA	3	142
Orlando	- Toledo	919	195	171	FL	68	199	DL	14	112
Cincinnati	- Ft. Lauderdale	933	158	170	DL	85	175	US	4	112
Chicago	- Houston	925	1577	159	CO	32	166	WN	19	124
Baltimore	- Miami	947	285	159	US	69	157	US	69	157
Atlanta	- Minneapolis	906	752	156	NW	62	139	NW	62	139
Colorado Springs	- San Jose	944	146	148	UA	42	154	QQ	28	121
Dallas/ Ft. Worth	- Jacksonville	920	249	145	DL	58	148	AA	34	135
Detroit	- Oklahoma City	903	110	144	NW	29	144	WN	22	120
Philadelphia	- Tampa	920	916	138	US	82	139	J7	3	94
Baltimore	- Ft. Myers	920	169	136	US	67	134	US	67	134

**Carrier Code Identifier and
Footnotes at End of Report**

City Pair	Market Data			Largest Carrier			Lowest Fare		
	Nonstop Distance	Psgs Per Day	Avg. One Way Fare	Carrier	% Market Share	Avg One Way Fare	Carrier	% Market Share	Avg One Way Fare
New York - Orlando	945	4475	134	DL	40	134	US	13	131
Cleveland - Tampa	927	636	132	CO	74	128	TW	1	115
Melbourne - New York	943	281	132	CO	55	123	CO	55	123
Albuquerque - St. Louis	935	138	129	TW	60	129	WN	32	116
Los Angeles - Spokane	945	165	126	AS	44	134	WN	27	114
Phoenix - Tulsa	936	256	121	WN	78	119	WN	78	119
Columbus, OH - Ft. Myers	931	279	120	HP	35	117	HP	35	117
Chicago - Colorago Springs	911	405	111	UA	56	116	W7	35	93
Ft. Myers - Indianapolis	946	681	110	TZ	72	110	DL	8	107
Burbank - Seattle	937	460	106	AS	70	106	WN	17	95
Kansas City - Salt Lake City	920	279	105	DL	56	111	WN	30	91
Baltimore - Ft. Lauderdale	925	1026	105	US	46	113	WN	44	95
Portland, OR - San Diego	933	676	101	AS	61	101	WN	19	89
Mileage Block--951-1000 miles									
Hartford - St. Louis	958	117	316	TW	83	317	AA	3	273
Minneapolis - Philadelphia	980	385	311	NW	73	315	US	16	294
Memphis - New York	957	384	289	NW	79	290	DL	10	262
Minneapolis - Raleigh/Durham	982	139	275	NW	72	285	DL	6	168
Dallas/ Ft. Worth - Detroit	987	668	261	NW	45	268	AA	45	254
Dallas/ Ft. Worth - Salt Lake City	989	441	226	DL	47	242	AA	37	219
Greensboro - Houston	987	114	213	CO	71	198	CO	71	198
Denver - Oakland	957	251	212	UA	89	209	DL	5	205
Newburgh - Orlando	990	273	207	FL	66	247	JI	15	111
Houston - Miami	964	403	184	CO	61	179	CO	61	179
Denver - Portland, OR	992	464	182	UA	73	189	QQ	12	128
Minneapolis - Salt Lake City	992	271	182	NW	53	187	DL	36	171
Dallas/ Ft. Worth - Orlando	984	796	179	AA	55	183	DL	36	174
New Orleans - Washington	968	586	178	US	55	179	US	55	179
Columbus, OH - Houston	987	225	178	CO	67	184	WN	10	143
Albuquerque - Minneapolis	982	150	175	NW	73	169	NW	73	169
Austin - Chicago	972	416	174	AA	64	179	UA	20	165
Ft. Myers - St. Louis	980	202	169	TW	89	164	TW	89	164
Ft. Lauderdale - Houston	965	361	157	CO	65	159	WN	18	123
Denver - Indianapolis	977	354	155	UA	83	154	NW	4	124
Ft. Lauderdale - Pittsburgh	994	335	153	US	80	156	NW	2	85
Denver - San Francisco	967	1718	152	UA	82	155	F9	13	108
Pittsburgh - West Palm Beach	952	308	151	US	87	153	NW	2	96
New York - Tampa	998	2701	147	CO	41	151	US	22	148
Ft. Myers - Pittsburgh	966	288	143	US	83	146	NW	1	98
Ft. Lauderdale - Philadelphia	992	1010	141	US	83	141	J7	3	109
Ft. Myers - Philadelphia	992	557	140	US	79	142	J7	1	112
Philadelphia - West Palm Beach	951	938	139	US	83	139	J7	1	100
Las Vegas - Oklahoma City	988	172	135	WN	51	128	WN	51	128
Detroit - Orlando	957	1538	134	NW	72	141	NK	13	100
Baltimore - New Orleans	999	387	129	US	44	135	DL	12	116
Detroit - Tampa	983	1148	127	NW	69	132	NK	16	93
Austin - Orlando	996	218	126	WN	38	109	WN	38	109
Philadelphia - Sarasota	957	215	124	US	70	125	DL	18	122
Palm Springs - Seattle	987	298	124	AS	87	123	DL	2	101

**Carrier Code Identifier and
Footnotes at End of Report**

City Pair	Market Data			Largest Carrier			Lowest Fare		
	Nonstop Distance	Psgs Per Day	Avg. One Way Fare	Carrier	% Market Share	Avg One Way Fare	Carrier	% Market Share	Avg One Way Fare
Baltimore - Kansas City	968	338	123	US	47	129	WN	22	111
Columbus, OH - Ft. Lauderdale	973	265	121	DL	39	133	WN	15	101
Santa Ana - Seattle	978	853	117	AS	58	124	HP	23	105
Los Angeles - Seattle	954	2296	109	AS	50	106	AS	50	106
Islip - Orlando	972	453	109	US	55	108	KW	44	108
Las Vegas - Wichita	988	169	109	HP	75	109	NJ	13	82
Colorado Springs - San Francisco	964	287	105	W7	70	92	W7	70	92
Ontario - Seattle	956	580	102	AS	65	101	WN	19	93
Atlantic City - Ft. Lauderdale	977	225	102	NK	98	100	NK	98	100
Colorado Springs - Indianapolis	989	202	94	W7	64	88	W7	64	88
Mileage Block--1001-1050 miles									
Minneapolis - New York	1015	1015	354	NW	75	364	CO	13	323
Boston - St. Louis	1047	266	348	TW	78	358	AA	5	224
Cleveland - Dallas/Fr. Worth	1021	351	296	AA	54	319	CO	32	246
Houston - Raleigh/Durham	1044	159	283	CO	50	295	AA	26	220
Kansas City - Philadelphia	1040	213	281	US	71	293	CO	2	186
Minneapolis - New Orleans	1041	171	261	NW	71	268	DL	8	191
Boston - Jacksonville	1012	156	198	US	54	199	US	54	199
Denver - Nashville	1014	239	195	UA	69	185	UA	69	185
Omaha - Washington	1013	164	188	YX	66	173	YX	66	173
Miami - Philadelphia	1013	635	176	US	50	175	US	50	175
Cleveland - Ft. Myers	1025	395	171	CO	77	171	AA	1	139
Chicago - San Antonio	1041	525	168	AA	50	172	UA	28	163
Cleveland - West Palm Beach	1021	235	163	CO	71	152	CO	71	152
Miami - Pittsburgh	1014	229	162	US	77	166	NW	4	109
Detroit - Sarasota	1024	233	162	NW	71	166	DL	20	147
Orlando - Rochester, NY	1034	410	159	US	52	121	US	52	121
Buffalo - Orlando	1011	536	153	US	53	116	US	53	116
Houston - Phoenix	1020	725	152	WN	41	126	WN	41	126
Denver - Seattle	1024	953	148	UA	80	146	F9	11	120
New York - West Palm Beach	1024	4988	141	CO	30	146	TW	15	133
Chicago - Sarasota	1035	348	139	TZ	70	124	TZ	70	124
New York - Sarasota	1034	612	136	CO	50	133	US	10	128
Chicago - Tampa	1012	2042	135	UA	36	144	WN	11	105
Chicago - Orlando	1005	2773	132	UA	26	153	TZ	22	109
Kansas City - Tampa	1050	250	130	DL	23	143	AA	16	113
San Diego - Spokane	1030	109	126	UA	32	120	DL	11	102
Baltimore - Omaha	1029	86	125	WN	30	105	WN	30	105
Grand Rapids - Orlando	1024	316	124	NW	40	124	UA	11	111
Phoenix - Portland, OR	1009	983	121	AS	33	131	UA	13	95
Indianapolis - Miami	1023	221	121	NW	26	111	AA	21	110
Colorado Springs - Portland, OR	1029	146	118	W7	43	93	W7	43	93
Islip - Tampa	1035	279	118	KW	82	115	KW	82	115
Phoenix - Spokane	1021	214	113	WN	46	107	WN	46	107
Hartford - Orlando	1050	996	112	DL	67	111	DL	67	111
San Diego - Seattle	1050	1065	108	AS	65	113	WN	11	86
Colorado Springs - Nashville	1008	118	107	W7	38	80	W7	38	80
Kansas City - Phoenix	1043	918	107	WN	45	102	WN	45	102
Ft. Lauderdale - Indianapolis	1006	425	103	TZ	44	99	WN	18	95

Carrier Code Identifier and
Footnotes at End of Report

City Pair		Market Data			Largest Carrier			Lowest Fare Carrier		
		Nonstop Distance	Psgs Per Day	Avg. One Way Fare	Carrier	% Market Share	Avg One Way Fare	Carrier	% Market Share	Avg One Way Fare
Orlando	- San Antonio	1041	315	102	DL	33	97	AA	20	93
Omaha	- Phoenix	1037	725	99	HP	49	100	UA	11	94
Mileage Block--1051-1100 miles										
Hartford	- Minneapolis	1051	151	383	NW	84	391	DL	2	171
Houston	- Minneapolis	1058	264	329	NW	46	342	CO	37	323
Dallas/ Ft. Worth	- Raleigh/Durham	1062	397	296	AA	81	310	US	6	140
Dallas/ Ft. Worth	- Pittsburgh	1069	294	290	US	51	276	US	51	276
Kansas City	- New York	1094	635	253	CO	42	254	CO	42	254
Cincinnati	- Denver	1070	200	238	DL	74	257	AA	6	61
Miami	- St. Louis	1069	173	214	TW	75	216	NW	3	187
Cleveland	- Houston	1091	448	198	CO	75	203	WN	11	146
Denver	- New Orleans	1063	348	193	UA	60	205	CO	12	177
Minneapolis	- San Antonio	1098	231	192	NW	43	204	DL	15	133
Dallas/ Ft. Worth	- Las Vegas	1055	739	187	AA	51	211	HP	21	146
Orlando	- Syracuse	1054	497	180	US	46	120	US	46	120
Detroit	- Houston	1077	497	176	CO	44	183	NW	34	168
Detroit	- West Palm Beach	1087	480	176	NW	83	176	AA	2	140
Albany, NY	- Orlando	1074	445	175	US	46	116	US	46	116
New Orleans	- Philadelphia	1088	384	173	US	71	173	DL	11	171
Cleveland	- Miami	1081	257	172	CO	52	151	CO	52	151
Ft. Lauderdale	- St. Louis	1057	307	160	TW	58	169	WN	25	128
Rochester, NW	- Tampa	1080	178	157	US	71	156	NW	3	134
Ft. Myers	- New York	1068	1593	146	CO	42	154	KW	12	106
Buffalo	- Tampa	1055	218	144	US	68	143	US	68	143
Cleveland	- Ft. Lauderdale	1062	514	140	CO	68	135	DL	10	125
Salt Lake City	- San Antonio	1087	150	137	DL	63	149	WN	18	98
Detroit	- Ft. Myers	1085	966	136	NW	61	149	NK	30	102
Miami	- New York	1092	6504	133	AA	40	150	OP	15	106
Kansas City	- Orlando	1072	657	128	AA	19	94	AA	19	94
Ft. Lauderdale	- New York	1074	5718	126	DL	26	122	KW	22	110
Milwaukee	- Tampa	1078	507	125	TZ	32	111	TZ	32	111
Islip	- West Palm Beach	1052	338	122	KW	85	121	KW	85	121
Milwaukee	- Orlando	1066	797	117	TZ	41	111	TZ	41	111
Ft. Lauderdale	- Islip	1093	464	114	KW	83	112	KW	83	112
Colorado Springs	- Seattle	1068	188	111	W7	46	92	W7	46	92
Orlando	- Providence	1073	828	98	DL	40	96	WN	39	95
Las Vegas	- San Antonio	1069	691	93	WN	67	94	HP	18	75
Las Vegas	- Omaha	1099	660	88	HP	43	80	HP	43	80
Austin	- Las Vegas	1085	581	80	WN	49	87	HP	33	63
Mileage Block--1101-1200 miles										
Boston	- Minneapolis	1124	432	367	NW	85	372	CO	2	157
Houston	- Pittsburgh	1118	249	331	US	58	325	US	58	325
Dallas/ Ft. Worth	- Washington	1184	1294	314	AA	74	327	DL	12	291
Dallas/ Ft. Worth	- Richmond	1158	160	295	AA	66	279	AA	66	279
Boston	- Memphis	1140	140	281	NW	76	260	J7	1	111
New Orleans	- New York	1168	963	273	CO	42	287	TW	11	232
New York	- Omaha	1138	179	268	YX	38	259	TW	11	245
Dallas/ Ft. Worth	- Ontario	1189	252	259	AA	51	274	HP	15	248

**Carrier Code Identifier and
Footnotes at End of Report**

City Pair	Market Data			Largest Carrier			Lowest Fare Carrier		
	Nonstop Distance	Psgs Per Day	Avg. One Way Fare	Carrier	% Market Share	Avg One Way Fare	Carrier	% Market Share	Avg One Way Fare
Dallas/ Ft. Worth - San Diego	1171	491	257	AA	63	282	DL	14	243
Denver - Detroit	1124	443	240	UA	48	246	UA	48	246
Dallas/ Ft. Worth - Miami	1121	411	238	AA	71	246	DL	20	206
Atlanta - Denver	1199	976	207	DL	43	247	UA	36	196
Columbus, OH - Denver	1156	222	202	UA	67	204	TW	12	172
Dallas/ Ft. Worth - West Palm Beach	1103	236	192	AA	51	162	AA	51	162
Dallas/ Ft. Worth - Ft. Lauderdale	1119	461	189	AA	58	193	DL	33	182
Chicago - Miami	1197	1346	178	AA	48	178	AA	48	178
Chicago - West Palm Beach	1144	772	157	AA	41	148	AA	41	148
Hartford - Miami	1194	242	156	AA	33	165	US	28	150
Albuquerque - Chicago	1118	295	155	AA	37	165	WN	21	127
Los Angeles - Oklahoma City	1190	170	154	WN	25	141	WN	25	141
Detroit - Miami	1145	796	153	NW	78	153	DL	3	149
Houston - Salt Lake City	1197	442	147	DL	34	159	WN	19	98
Syracuse - Tampa	1105	170	145	US	70	147	US	70	147
Albuquerque - Portland, OR	1114	139	145	DL	29	144	WN	21	129
Austin - San Diego	1163	156	145	WN	34	114	WN	34	114
Baltimore - Oklahoma City	1183	137	145	TW	31	140	WN	27	128
Chicago - Ft. Myers	1105	1197	144	TZ	43	132	TZ	43	132
Chicago - Ft. Lauderdale	1182	1682	143	UA	29	157	TZ	21	122
Atlanta - Colorago Springs	1186	306	142	W7	43	117	W7	43	117
Boston - West Palm Beach	1197	1184	142	DL	68	147	US	15	134
Detroit - Ft. Lauderdale	1127	894	140	NW	63	149	NK	21	100
Des Moines - Phoenix	1150	340	138	YV	45	135	HP	21	134
Boston - Tampa	1185	1141	136	DL	46	129	DL	46	129
Buffalo - Ft. Lauderdale	1167	177	133	US	71	132	DL	11	132
Albuquerque - Seattle	1182	181	133	UA	31	132	WN	17	115
San Antonio - San Diego	1131	186	132	WN	36	127	DL	13	123
Hartford - West Palm Beach	1133	781	130	DL	53	142	KW	19	107
Providence - West Palm Beach	1149	238	127	US	49	122	US	49	122
Ft. Myers - Milwaukee	1184	420	126	TZ	25	116	NW	23	111
Ft. Myers - Kansas City	1158	179	125	NJ	32	107	NJ	32	107
Hartford - Tampa	1111	537	124	US	57	124	JI	19	113
Ft. Myers - Hartford	1181	337	124	DL	52	120	DL	52	120
Boston - Orlando	1121	2053	118	DL	54	115	DL	54	115
Ft. Lauderdale - Hartford	1174	456	118	KW	31	118	DL	17	116
Phoenix - Seattle	1107	1598	116	AS	37	126	UA	14	88
Ft. Lauderdale - Newburgh	1120	199	113	KW	68	111	KW	68	111
Manchester - Orlando	1143	247	111	US	87	109	US	87	109
Ft. Lauderdale - Providence	1189	434	108	WN	45	106	US	31	105
Providence - Tampa	1138	403	106	WN	56	99	WN	56	99
St. Louis - Salt Lake City	1157	372	99	TW	32	98	WN	29	79
Kansas City - Las Vegas	1139	973	88	WN	50	90	HP	19	77
Mileage Block--1201-1300 miles									
Houston - Washington	1206	460	317	CO	68	321	US	2	274
Dallas/ Ft. Worth - Santa Ana	1205	540	311	AA	73	314	DL	12	282
New York - Tulsa	1228	127	291	TW	34	290	CO	14	259
Dallas/ Ft. Worth - Los Angeles	1235	1089	291	AA	70	308	DL	11	285
Baltimore - Dallas/Fr. Worth	1217	419	290	AA	64	310	WN	1	23

**Carrier Code Identifier and
Footnotes at End of Report**

		Market Data			Largest Carrier		Lowest Fare Carrier			
City Pair		Nonstop Distance	Psgs Per Day	Avg. One Way Fare	Carrier	% Market Share	Avg One Way Fare	Carrier	% Market Share	Avg One Way Fare
Denver	- Pittsburgh	1291	202	281	US	71	279	US	71	279
Cleveland	- Denver	1202	252	221	UA	54	217	UA	54	217
Boston	- Kansas City	1259	209	214	YX	39	199	YX	39	199
Minneapolis	- Tucson	1299	166	207	NW	72	202	HP	11	201
Chicago	- Salt Lake City	1250	609	191	DL	40	202	AA	20	169
Chicago	- El Paso	1236	237	190	AA	70	198	WN	10	178
Detroit	- San Antonio	1218	175	178	NW	31	181	AA	26	176
Boston	- Miami	1258	856	171	AA	64	174	US	12	156
Baltimore	- Houston	1235	870	168	CO	65	175	WN	17	130
Omaha	- Orlando	1211	402	158	FL	25	305	DL	22	104
Austin	- Los Angeles	1238	366	157	AA	38	178	WN	29	120
Albuquerque	- Atlanta	1270	210	150	DL	48	193	AA	30	80
Minneapolis	- Phoenix	1276	1961	147	NW	66	147	HP	20	143
Los Angeles	- Tulsa	1283	177	146	AA	43	142	WN	14	139
Ft. Lauderdale	- Kansas City	1244	201	140	DL	39	145	TW	18	133
Kansas City	- Miami	1252	220	140	AA	19	157	NJ	18	110
Ft. Lauderdale	- Milwaukee	1245	226	136	NW	33	126	NW	33	126
Boston	- Ft. Lauderdale	1237	1310	134	US	41	135	DL	41	132
Las Vegas	- Minneapolis	1300	829	134	NW	58	145	HP	21	106
Los Angeles	- San Antonio	1211	451	133	WN	44	120	WN	44	120
Miami	- Milwaukee	1260	251	130	NW	45	129	AA	22	118
Boston	- Ft. Myers	1249	1090	128	DL	54	123	DL	54	123
Ft. Myers	- Providence	1203	159	122	US	52	115	US	52	115
Phoenix	- St. Louis	1262	814	122	WN	41	107	WN	41	107
Seattle	- Tucson	1217	241	120	HP	45	122	WN	17	105
Boston	- Sarasota	1221	355	111	DL	63	111	US	17	106
Houston	- Las Vegas	1235	1016	111	WN	47	95	WN	47	95
Des Moines	- Las Vegas	1217	245	100	UA	43	106	NJ	12	87
Dallas/ Ft. Worth	- Long Beach	1220	255	96	AA	95	89	AA	95	89
Mileage Block--1301-1400 miles										
Houston	- Philadelphia	1325	419	370	CO	68	388	AA	11	257
Dallas/ Ft. Worth	- New York	1379	2547	301	AA	70	323	CO	17	167
Dallas/ Ft. Worth	- Philadelphia	1302	763	289	AA	56	315	US	34	232
New York	- Oklahoma City	1334	144	278	AA	34	264	CO	14	242
Houston	- Santa Ana	1348	239	277	CO	70	276	AA	13	259
Minneapolis	- Seattle	1400	348	269	NW	81	273	TW	1	148
Austin	- Washington	1309	260	248	AA	48	248	CO	17	226
Charlotte	- Denver	1339	196	230	US	55	257	AA	24	110
Minneapolis	- Tampa	1307	445	217	NW	77	223	NJ	7	141
San Antonio	- Washington	1378	337	212	AA	49	182	AA	49	182
Dallas/ Ft. Worth	- Reno	1345	160	209	AA	39	201	HP	13	161
Boston	- New Orleans	1369	266	208	US	30	201	US	30	201
Minneapolis	- Orlando	1310	842	194	NW	66	213	AA	5	112
Omaha	- Seattle	1371	89	188	UA	49	194	DL	14	169
Houston	- Los Angeles	1379	1218	188	CO	62	189	WN	21	153
New Orleans	- Phoenix	1303	215	170	WN	38	144	WN	38	144
Houston	- Ontario	1335	224	165	CO	46	158	WN	26	146
Houston	- San Diego	1304	402	164	CO	56	165	WN	25	132
Austin	- Baltimore	1343	167	162	WN	29	126	WN	29	126

**Carrier Code Identifier and
Footnotes at End of Report**

		Market Data			Largest Carrier		Lowest Fare Carrier			
City Pair		Nonstop Distance	Psgs Per Day	Avg. One Way Fare	Carrier	% Market Share	Avg One Way Fare	Carrier	% Market Share	Avg One Way Fare
Los Angeles	- Omaha	1332	222	151	YX	40	162	UA	28	147
Omaha	- San Diego	1316	137	136	UA	42	131	UA	42	131
Kansas City	- San Diego	1334	349	120	UA	30	113	WN	25	110
Kansas City	- Ontario	1320	158	117	UA	31	108	AA	18	108
Las Vegas	- St. Louis	1372	662	116	TW	49	124	HP	20	101
Kansas City	- Los Angeles	1364	676	113	US	25	99	NJ	11	98
Mileage Block--1401-1500 miles										
Dallas/ Ft. Worth	- Hartford	1471	244	369	AA	70	391	US	7	256
Dallas/ Ft. Worth	- San Jose	1438	518	357	AA	77	367	DL	10	307
Houston	- New York	1407	1524	349	CO	74	368	NW	2	196
Dallas/ Ft. Worth	- San Francisco	1464	835	329	AA	57	355	DL	11	309
Minneapolis	- Portland, OR	1427	176	296	NW	74	295	AA	2	163
Dallas/ Ft. Worth	- Oakland	1456	262	288	AA	60	289	DL	25	275
Dallas/ Ft. Worth	- Sacramento	1431	221	279	AA	58	276	AA	58	276
Baltimore	- Denver	1492	294	274	UA	64	318	AA	10	125
Denver	- Washington	1454	1189	240	UA	72	268	AA	12	124
Denver	- Raleigh/Durham	1436	186	236	AA	32	229	US	11	221
Ft. Lauderdale	- Minneapolis	1488	243	215	NW	66	213	CO	3	161
Austin	- San Jose	1471	427	211	AA	82	216	WN	6	121
Chicago	- Tucson	1437	339	202	AA	72	201	WN	1	137
Ft. Myers	- Minneapolis	1416	489	197	NW	80	206	NJ	5	133
Detroit	- Salt Lake City	1483	187	182	NW	47	170	NW	47	170
Kansas City	- Portland, OR	1485	120	173	UA	35	171	UA	35	171
Austin	- San Francisco	1499	212	173	AA	35	178	WN	12	105
Little Rock	- Los Angeles	1494	122	168	AA	33	170	WN	30	149
San Antonio	- San Francisco	1482	170	167	AA	29	178	WN	15	117
Chicago	- Phoenix	1440	2710	166	UA	33	185	WN	18	116
Omaha	- San Francisco	1435	126	163	UA	55	179	TW	9	110
Baltimore	- San Antonio	1410	264	160	CO	22	158	WN	17	133
Kansas City	- Seattle	1492	220	159	UA	30	185	NW	20	144
Colorado Springs	- Washington	1472	443	151	UA	33	178	W7	32	123
Kansas City	- Sacramento	1446	96	148	UA	37	139	WN	12	129
Nashville	- Phoenix	1449	296	143	WN	56	143	AA	21	133
San Francisco	- Tulsa	1465	113	136	AA	38	131	DL	13	108
Indianapolis	- Phoenix	1489	629	131	HP	55	134	WN	10	111
Nashville	- Salt Lake City	1406	177	130	DL	34	153	AA	28	102
New Orleans	- Salt Lake City	1429	198	129	DL	76	127	NW	3	86
Milwaukee	- Phoenix	1461	907	122	HP	34	119	NW	20	105
Kansas City	- San Francisco	1499	501	111	UA	31	117	NJ	11	94
Mileage Block--1501-1600 miles										
Boston	- Dallas/Fr. Worth	1562	735	401	AA	68	413	DL	18	384
Minneapolis	- San Jose	1577	162	383	NW	76	382	HP	4	323
Boston	- Houston	1598	375	373	CO	72	373	NW	1	214
Hartford	- Houston	1510	112	345	CO	44	339	AA	14	297
Denver	- Philadelphia	1558	425	313	UA	71	332	US	13	276
Minneapolis	- Santa Ana	1523	246	310	NW	80	302	TW	1	226
Austin	- New York	1509	398	272	AA	41	308	CO	28	230
Cincinnati	- Phoenix	1570	173	271	DL	82	279	AA	2	170

**Carrier Code Identifier and
Footnotes at End of Report**

City Pair	Market Data			Largest Carrier			Lowest Fare Carrier		
	Nonstop Distance	Psgs Per Day	Avg. One Way Fare	Carrier	% Market Share	Avg One Way Fare	Carrier	% Market Share	Avg One Way Fare
Minneapolis - San Francisco	1589	807	255	NW	74	259	NJ	4	126
St. Louis - Santa Ana	1571	188	249	TW	72	248	HP	12	199
New York - San Antonio	1572	430	248	CO	48	219	CO	48	219
Los Angeles - Minneapolis	1536	872	235	NW	73	240	NJ	4	145
Atlanta - Salt Lake City	1590	479	233	DL	64	276	UA	16	124
Atlanta - Phoenix	1588	587	229	DL	52	259	HP	27	205
Los Angeles - St. Louis	1593	558	224	TW	66	247	WN	12	143
Denver - Tampa	1507	368	221	UA	52	242	CO	14	173
Miami - Minneapolis	1501	456	215	NW	76	222	US	1	109
Minneapolis - San Diego	1532	522	204	NW	67	208	TW	3	145
Denver - Orlando	1545	818	196	UA	57	215	DL	19	155
Oklahoma City - Seattle	1523	83	178	UA	48	180	DL	12	170
Cleveland - Salt Lake City	1570	129	175	DL	28	219	AA	10	128
Ontario - St. Louis	1549	151	166	TW	48	163	WN	23	138
St. Louis - San Diego	1559	323	160	TW	58	169	WN	18	120
Houston - Providence	1574	177	154	WN	33	132	WN	33	132
Las Vegas - New Orleans	1503	225	140	DL	42	131	WN	19	120
Louisville - Phoenix	1509	159	139	WN	37	122	WN	37	122
Colorado Springs - Orlando	1521	329	137	W7	63	121	W7	63	121
Las Vegas - Nashville	1589	297	134	WN	56	130	UA	14	111
Chicago - Las Vegas	1515	2309	131	UA	30	149	WN	13	93
Houston - Reno	1548	223	131	WN	42	107	WN	42	107
Las Vegas - Milwaukee	1525	489	121	HP	34	108	HP	34	108
Indianapolis - Las Vegas	1591	811	113	TZ	51	114	HP	26	100
Mileage Block--1601-1700 miles									
Denver - Hartford	1673	157	318	UA	55	331	AA	11	286
Dallas/ Ft. Worth - Seattle	1660	524	312	AA	54	334	DL	22	280
Dallas/ Ft. Worth - Portland, OR	1616	286	310	AA	47	312	DL	29	299
Austin - Boston	1695	193	304	AA	61	301	CO	14	253
Denver - New York	1611	1872	280	UA	57	325	CO	25	190
Milwaukee - Seattle	1698	73	274	NW	59	266	NW	59	266
Chicago - Palm Springs	1652	227	261	AA	83	256	AA	83	256
Los Angeles - Memphis	1620	190	250	NW	75	248	AA	12	225
Houston - San Jose	1611	185	225	CO	34	205	WN	20	143
Los Angeles - New Orleans	1672	612	223	UA	30	253	CO	17	192
Houston - San Francisco	1635	790	217	CO	65	208	CO	65	208
Albuquerque - Washington	1644	371	197	AA	40	190	TW	18	170
New Orleans - San Diego	1603	169	188	CO	29	176	WN	15	132
Houston - Oakland	1646	147	185	WN	35	140	WN	35	140
Cincinnati - Las Vegas	1680	166	185	DL	70	206	US	3	80
Albuquerque - Baltimore	1670	116	165	AA	21	155	WN	16	124
Detroit - Phoenix	1671	1243	156	NW	60	165	WN	10	117
Grand Rapids - Las Vegas	1644	174	147	NW	72	143	NW	72	143
Colorado Springs - New York	1624	493	146	CO	46	131	W7	29	119
Columbus, OH - Phoenix	1672	590	144	HP	62	158	TW	7	99
Chicago - Reno	1672	436	129	QQ	54	139	QQ	54	139
Colorado Springs - Miami	1681	208	120	W7	50	115	W7	50	115
Mileage Block--1701-1800 miles									

**Carrier Code Identifier and
Footnotes at End of Report**

		Market Data			Largest Carrier		Lowest Fare Carrier			
City Pair		Nonstop Distance	Psgs Per Day	Avg. One Way Fare	Carrier	% Market Share	Avg One Way Fare	Carrier	% Market Share	Avg One Way Fare
Boston	- Denver	1754	558	331	UA	72	355	US	6	185
Boston	- Colorago Springs	1782	99	297	UA	47	309	CO	13	201
Chicago	- Santa Ana	1727	706	294	UA	45	314	AA	38	290
Chicago	- Sacramento	1782	238	287	UA	65	327	TW	6	120
Chicago	- Seattle	1721	739	279	UA	58	316	AA	14	280
Chicago	- Portland, OR	1740	420	270	UA	57	294	AA	15	253
Vail	- New York	1729	395	253	AA	76	263	NW	10	199
Chicago	- Los Angeles	1744	2672	252	UA	43	292	TZ	15	152
Chicago	- San Diego	1724	872	246	UA	38	275	WN	13	130
Chicago	- Ontario	1701	326	241	UA	62	253	WN	11	137
St. Louis	- San Francisco	1737	342	233	TW	69	238	WN	4	121
Denver	- Ft. Lauderdale	1705	238	219	UA	37	237	CO	15	205
St. Louis	- San Jose	1719	116	213	TW	56	222	WN	11	135
Portland, OR	- St. Louis	1711	123	212	TW	57	209	DL	15	199
St. Louis	- Seattle	1711	231	205	TW	64	208	WN	6	154
Los Angeles	- Milwaukee	1758	300	204	YX	37	216	AA	11	163
Austin	- Seattle	1764	125	203	AA	27	257	CO	12	164
Los Angeles	- Nashville	1797	327	201	AA	51	226	WN	16	147
Denver	- Miami	1710	558	191	UA	37	245	DL	11	132
Phoenix	- Tampa	1790	298	173	DL	32	172	CO	24	148
Milwaukee	- San Diego	1741	182	171	YX	32	178	AA	11	166
Atlanta	- Las Vegas	1748	694	170	DL	52	204	HP	30	124
Indianapolis	- San Diego	1787	201	165	UA	25	169	TW	14	149
San Antonio	- Seattle	1774	151	163	AA	31	147	AA	31	147
Cleveland	- Phoenix	1738	541	154	CO	56	154	WN	13	123
Nashville	- San Diego	1751	158	152	AA	45	153	WN	14	135
Detroit	- Las Vegas	1750	903	146	NW	65	157	HP	17	104
Columbus, OH	- Las Vegas	1772	762	105	HP	58	117	DL	12	59
Mileage Block--1801-1900 miles										
Chicago	- San Francisco	1846	1866	324	UA	59	368	AA	17	333
Chicago	- San Jose	1830	415	300	UA	37	334	AA	36	326
Chicago	- Oakland	1836	306	300	UA	79	322	WN	11	127
Salt Lake City	- Washington	1834	287	267	DL	66	290	NW	5	133
Phoenix	- Pittsburgh	1814	221	266	US	76	271	CO	5	188
Atlanta	- San Diego	1892	375	264	DL	65	288	CO	6	139
Houston	- Portland, OR	1832	152	241	CO	19	240	AA	14	176
Indianapolis	- Seattle	1872	105	226	UA	34	266	TW	15	197
Houston	- Seattle	1875	317	225	CO	54	207	W7	1	125
Albuquerque	- New York	1814	331	219	CO	27	178	CO	27	178
Birmingham	- Los Angeles	1823	111	219	DL	23	288	WN	21	170
Orlando	- Phoenix	1850	413	185	HP	23	207	WN	18	134
Milwaukee	- San Francisco	1847	265	173	NW	45	158	NW	45	158
Indianapolis	- Los Angeles	1816	403	168	US	27	154	TW	11	141
Los Angeles	- Louisville	1846	153	166	DL	36	188	TW	15	132
Cleveland	- Las Vegas	1826	606	131	CO	65	131	HP	10	106
Baltimore	- Salt Lake City	1865	502	116	UA	30	105	AA	12	96
Mileage Block--1901-2000 miles										
Atlanta	- Santa Ana	1921	284	326	DL	49	363	AA	24	223

**Carrier Code Identifier and
Footnotes at End of Report**

City Pair		Market Data			Largest Carrier		Lowest Fare Carrier			
		Nonstop Distance	Psgs Per Day	Avg. One Way Fare	Carrier	% Market Share	Avg One Way Fare	Carrier	% Market Share	Avg One Way Fare
Detroit	- Portland, OR	1956	117	308	NW	63	326	UA	11	287
Phoenix	- Washington	1960	452	307	UA	34	370	AA	17	245
Tucson	- Washington	1947	204	301	AA	52	284	DL	11	277
Cincinnati	- Los Angeles	1901	278	293	DL	78	309	AA	5	143
Cincinnati	- Seattle	1967	109	289	DL	77	295	AA	2	165
Atlanta	- Los Angeles	1946	1182	278	DL	64	311	CO	5	137
Detroit	- Seattle	1928	247	269	NW	76	268	TW	4	151
Detroit	- Los Angeles	1979	817	263	NW	66	280	TW	4	139
Detroit	- Santa Ana	1961	270	259	NW	69	252	UA	8	226
Albuquerque	- Boston	1974	121	253	AA	25	259	UA	21	235
Atlanta	- Ontario	1902	166	252	DL	58	265	DL	58	265
New York	- Salt Lake City	1987	738	251	DL	39	309	UA	12	204
Philadelphia	- Salt Lake City	1930	197	245	UA	30	241	AA	22	171
New Orleans	- San Francisco	1912	324	230	UA	44	261	CO	21	184
Dayton	- Los Angeles	1933	117	228	UA	23	226	US	23	181
Las Vegas	- Pittsburgh	1912	167	224	US	51	250	CO	8	121
Ft. Lauderdale	- Phoenix	1976	166	216	DL	35	250	WN	14	105
Miami	- Phoenix	1975	200	210	HP	40	212	CO	12	193
Detroit	- San Diego	1958	379	206	NW	53	232	HP	11	156
Nashville	- Seattle	1984	112	202	NW	27	199	AA	24	185
Nashville	- San Francisco	1968	142	188	AA	28	188	NW	11	165
Indianapolis	- San Francisco	1946	283	171	UA	31	198	TW	15	129
Orlando	- Salt Lake City	1930	344	170	DL	66	184	WN	4	103
Buffalo	- Las Vegas	1987	177	157	AA	33	156	UA	30	149
Columbus, OH	- Los Angeles	1998	418	157	HP	27	160	NW	12	124
Baltimore	- Phoenix	1999	703	145	US	22	137	WN	19	130
Columbus, OH	- San Diego	1969	188	144	HP	25	144	AA	14	134
Las Vegas	- Tampa	1985	361	133	HP	41	110	HP	41	110
Detroit	- Reno	1905	193	131	NW	57	128	QQ	23	103
Mileage Block--2001-2200 miles										
Charlotte	- Los Angeles	2127	216	332	US	70	346	AA	9	243
Pittsburgh	- Seattle	2129	84	325	US	64	306	CO	1	212
Los Angeles	- Pittsburgh	2137	237	319	US	68	324	TW	5	219
Atlanta	- San Francisco	2139	959	319	DL	63	347	UA	13	329
Atlanta	- Portland, OR	2174	234	298	DL	68	324	CO	2	99
Boston	- Salt Lake City	2106	247	297	DL	72	307	NW	4	160
Cincinnati	- San Francisco	2037	250	294	DL	72	319	UA	12	159
Atlanta	- San Jose	2116	145	294	AA	27	300	HP	17	196
Detroit	- San Francisco	2080	558	288	NW	73	292	WN	1	165
Atlanta	- Seattle	2183	419	283	DL	66	307	CO	4	128
Orlando	- Santa Ana	2186	159	271	AA	30	308	CO	16	186
Philadelphia	- Phoenix	2076	490	270	US	58	268	HP	19	246
New York	- Phoenix	2144	1692	270	HP	42	288	AA	11	235
Atlanta	- Sacramento	2098	135	268	DL	29	333	TW	18	164
New York	- Tucson	2127	336	264	AA	36	290	CO	18	226
Cleveland	- Seattle	2030	104	258	NW	24	274	TW	12	224
Las Vegas	- Washington	2071	283	251	UA	39	281	AA	17	215
Orlando	- San Diego	2152	222	236	DL	29	280	CO	17	198
Cleveland	- San Francisco	2162	283	234	CO	65	207	CO	65	207

**Carrier Code Identifier and
Footnotes at End of Report**

City Pair	Market Data			Largest Carrier			Lowest Fare		
	Nonstop Distance	Psgrs Per Day	Avg. One Way Fare	Carrier	% Market Share	Avg One Way Fare	Carrier	% Market Share	Avg One Way Fare
San Diego - Tampa	2093	137	219	DL	28	246	AA	27	194
Cleveland - Los Angeles	2054	440	217	CO	63	203	HP	2	152
New Orleans - Seattle	2092	150	212	UA	26	221	CO	13	198
Columbus, OH - Portland, OR	2045	70	203	NW	30	160	NW	30	160
Los Angeles - Tampa	2159	476	199	DL	62	197	DL	62	197
Cleveland - San Diego	2029	175	194	CO	49	170	WN	8	128
Columbus, OH - San Francisco	2128	188	194	UA	18	258	NW	11	169
Las Vegas - Raleigh/Durham	2027	181	190	AA	43	196	US	11	153
Las Vegas - Philadelphia	2177	588	181	US	43	179	HP	32	149
Las Vegas - Miami	2177	317	177	HP	40	175	AA	29	154
Columbus, OH - Seattle	2022	128	173	NW	33	159	US	11	137
Ft. Lauderdale - Las Vegas	2177	240	160	DL	33	171	CO	26	147
Baltimore - Las Vegas	2107	573	145	HP	36	133	HP	36	133
Las Vegas - Orlando	2040	450	140	DL	54	143	AA	13	115
Mileage Block--2201-2400 miles									
Palm Springs - New York	2370	208	367	AA	60	347	AA	60	347
Charlotte - San Francisco	2298	167	356	US	71	367	UA	11	264
Philadelphia - Seattle	2381	219	356	US	42	343	NW	14	296
Los Angeles - Washington	2290	1660	346	UA	49	389	AA	30	314
Raleigh/Durham - San Francisco	2400	200	335	AA	31	312	US	16	264
Santa Ana - Washington	2281	201	334	AA	37	310	AA	37	310
Pittsburgh - San Francisco	2254	259	325	US	71	337	UA	12	242
Seattle - Washington	2312	504	322	UA	57	358	AA	12	201
Philadelphia - Santa Ana	2380	180	317	AA	30	316	AA	30	316
Hartford - Phoenix	2213	158	310	AA	22	360	US	17	259
Portland, OR - Washington	2339	215	304	UA	54	319	NW	12	249
Sacramento - Washington	2376	157	299	UA	44	316	AA	30	248
San Diego - Washington	2256	615	291	UA	44	337	AA	30	214
Philadelphia - San Diego	2371	303	273	US	47	256	US	47	256
San Francisco - Tampa	2396	240	266	DL	28	305	US	12	204
Los Angeles - Norfolk	2379	127	264	US	26	284	TW	15	185
Los Angeles - Orlando	2217	888	254	DL	60	270	DL	60	270
Los Angeles - Raleigh/Durham	2239	245	247	AA	28	280	US	24	190
Los Angeles - Miami	2342	994	243	AA	53	266	KW	25	173
Baltimore - Portland, OR	2367	96	234	DL	29	209	DL	29	209
Baltimore - Los Angeles	2330	754	230	US	59	232	WN	8	158
Baltimore - Seattle	2339	217	220	UA	29	230	NW	20	204
Las Vegas - New York	2242	1851	207	HP	43	181	HP	43	181
Boston - Phoenix	2301	708	191	HP	31	219	CO	11	128
Ft. Lauderdale - Los Angeles	2342	644	186	AA	36	173	KW	22	171
Baltimore - San Diego	2298	375	179	US	24	174	AA	17	161
Baltimore - Ontario	2292	116	177	UA	25	197	WN	14	134
Boston - Las Vegas	2383	637	171	HP	27	148	CO	17	111
Phoenix - Providence	2282	191	135	US	28	115	US	28	115
Mileage Block--2401 miles or more									
New York - San Francisco	2577	3842	417	UA	49	453	CO	13	274
Boston - San Francisco	2704	1511	413	UA	69	450	CO	3	189
New York - San Jose	2556	181	395	AA	39	400	AA	39	400

Carrier Code Identifier and
Footnotes at End of Report

City Pair	Market Data			Largest Carrier			Lowest Fare Carrier		
	Nonstop Distance	Psgs Per Day	Avg. One Way Fare	Carrier	% Market Share	Avg One Way Fare	Carrier	% Market Share	Avg One Way Fare
San Francisco - Washington	2421	1385	389	UA	68	442	AA	10	185
Philadelphia - San Francisco	2522	786	371	UA	45	396	US	35	357
Boston - San Jose	2689	365	364	AA	68	352	AA	68	352
New York - Sacramento	2512	160	362	UA	35	421	AA	19	329
Boston - Portland, OR	2542	147	360	UA	37	400	AA	12	305
New York - Santa Ana	2436	376	356	CO	31	288	CO	31	288
Boston - Seattle	2498	340	352	NW	42	336	NW	42	336
New York - Seattle	2415	743	351	UA	37	399	CO	24	275
Philadelphia - Portland, OR	2412	102	347	UA	45	361	NW	12	313
New York - Portland, OR	2443	338	347	UA	31	372	DL	30	329
Boston - Sacramento	2645	87	342	UA	36	358	UA	36	358
San Jose - Washington	2416	175	341	AA	41	319	AA	41	319
Hartford - San Francisco	2631	192	337	UA	27	375	DL	11	300
Boston - Los Angeles	2612	1257	331	UA	41	342	AA	32	341
Boston - Santa Ana	2592	186	330	AA	33	329	AA	33	329
Hartford - Los Angeles	2527	197	327	AA	25	365	DL	12	294
Los Angeles - New York	2471	6245	324	AA	32	395	CO	11	231
Los Angeles - Philadelphia	2402	850	320	US	43	308	US	43	308
Hartford - Seattle	2441	88	317	UA	31	315	US	12	269
New York - San Diego	2426	898	316	CO	31	246	CO	31	246
New York - Ontario	2426	120	302	UA	24	318	DL	11	283
Boston - San Diego	2591	402	274	UA	28	293	AA	25	271
Orlando - San Francisco	2446	468	269	UA	39	316	DL	16	279
New York - Reno	2402	187	265	UA	31	282	TW	11	218
Ft. Lauderdale - San Francisco	2589	171	265	DL	29	296	US	10	150
Miami - San Francisco	2585	608	263	AA	57	256	AA	57	256
Seattle - Tampa	2528	151	248	DL	23	287	CO	12	202
Baltimore - San Francisco	2458	675	245	UA	37	251	US	37	240
Orlando - Portland, OR	2539	164	237	DL	37	252	AA	12	212
New York - Oakland	2578	225	230	FF	65	159	FF	65	159
Miami - Seattle	2724	250	224	AA	44	234	AA	44	234
Baltimore - San Jose	2443	125	211	UA	43	213	TW	11	174
Los Angeles - Providence	2592	164	201	AA	24	194	US	22	181
Orlando - Seattle	2556	381	200	DL	25	230	NW	20	176

Top 1,000 City Pair Markets Summarized by City
First Quarter 1997 and 1996
Markets with 250,000 or More Passengers
Sorted by Average Passenger Trip

First Quarter 1997

First Quarter 1996

	Number of Markets	First Quarter 1997			First Quarter 1996				
		Average Psgrs	Average Fare	Average Yield (Cents) 3/	Average Psgr Distance	Average Psgrs	Average Fare	Average Yield (Cents) 3/	Average Psgr Distance
Burbank	9	933,770	67	18.6	358	883,390	61	17.1	356
Boise	10	295,170	76	16.7	454	272,910	74	16.5	450
Spokane	13	397,100	70	14.9	474	407,340	66	14.5	460
Oakland	19	1,665,110	76	14.8	516	1,664,220	68	14.0	488
Tulsa	13	386,620	103	18.9	543	354,860	103	19.9	518
Reno	21	969,840	70	12.2	578	922,460	68	12.2	556
El Paso	11	414,740	95	16.3	580	416,650	88	15.6	566
Ontario	22	1,032,830	86	14.3	602	965,870	84	13.8	607
Sacramento	19	1,124,660	87	14.4	605	986,580	82	13.4	613
Louisville	15	407,560	108	17.7	609	349,330	106	18.0	589
Oklahoma City	16	377,920	108	17.4	622	364,950	105	17.3	605
Jacksonville	15	435,770	132	20.7	637	351,860	143	21.5	665
Memphis	14	366,490	187	28.4	659	371,720	165	25.1	659
San Jose	27	1,748,720	105	15.8	666	1,557,790	108	16.0	673
Charlotte	25	602,270	250	36.6	684	548,570	235	34.8	674
Buffalo	10	265,140	168	23.7	709	250,430	164	24.9	662
Raleigh/Durham	21	659,200	185	25.4	730	614,140	161	23.6	684
Dallas/Ft. Worth	70	4,653,490	175	23.6	743	4,542,220	168	22.6	743
St. Louis	44	1,806,900	140	18.5	756	1,695,070	137	18.6	734
Austin	26	857,190	125	16.6	757	770,740	130	17.8	728
Albuquerque	27	881,590	108	14.1	766	813,450	105	13.9	756
Pittsburgh	25	797,310	204	26.3	775	787,550	192	25.4	756
Atlanta	69	4,152,720	177	22.8	776	3,928,000	150	19.8	756
Nashville	32	951,160	138	17.6	781	830,490	147	19.1	768
Houston	62	3,330,370	145	18.6	783	3,086,140	149	19.4	767
San Antonio	28	956,510	116	14.6	794	871,900	129	17.1	756
Santa Ana	23	1,283,600	139	16.9	822	954,000	164	17.9	918
Cleveland	31	1,278,640	150	18.0	829	1,213,500	149	18.2	818
Kansas City	41	1,560,450	115	13.8	830	1,404,290	119	14.7	811
New Orleans	31	1,262,040	138	16.6	830	1,101,060	133	16.1	823
Tucson	14	449,810	113	13.5	835	437,610	108	12.6	855
Chicago	81	7,016,600	166	19.2	866	6,662,470	157	18.3	858
Salt Lake City	36	1,715,070	111	12.7	875	1,563,970	104	12.4	843
Cincinnati	21	491,910	240	27.4	876	398,040	222	26.7	834
Omaha	17	452,970	127	14.2	895	482,780	109	12.0	904
Detroit	47	2,357,120	177	19.7	901	2,318,990	163	19.3	842
Portland, OR	35	1,498,160	120	13.3	903	1,401,050	113	12.7	896
Indianapolis	30	1,057,740	140	15.4	911	1,017,930	135	15.1	890

Columbus, OH	24	915,850	133	14.5	916	831,690	120	13.2	909
Las Vegas	58	4,450,210	95	10.3	922	4,130,750	90	9.4	951
Washington	53	3,179,150	207	21.6	959	3,045,540	192	19.9	968
San Diego	41	2,330,500	118	12.3	959	2,114,800	117	12.4	950
Colorado Springs	25	719,510	106	11.1	962	773,580	95	10.6	897
Providence	13	457,160	110	11.4	965	192,890	191	17.5	1095
Phoenix	55	4,388,490	117	12.0	972	3,725,420	109	11.1	986
Denver	54	3,079,320	166	17.0	976	2,582,780	177	18.3	969
Tampa	41	2,190,610	133	13.6	979	2,076,480	129	13.2	975
Minneapolis	45	1,989,390	209	21.2	988	1,730,960	221	22.8	969
Philadelphia	43	2,046,120	206	20.3	1015	1,898,490	201	19.9	1006
Baltimore	44	1,958,020	135	13.2	1020	1,484,600	149	14.9	1000
Orlando	64	3,840,190	136	13.2	1029	3,175,330	151	14.5	1041
Ft. Lauderdale	38	2,222,200	126	12.2	1037	1,816,020	135	12.4	1091
West Palm Beach	14	1,091,120	142	13.6	1043	1,051,700	140	13.4	1042
Hartford	25	673,680	203	18.7	1086	670,990	193	18.1	1065
Boston	51	3,166,980	207	18.8	1101	3,154,510	195	17.5	1113
Milwaukee	22	673,830	163	14.8	1101	596,520	151	14.0	1081
Ft. Myers	19	886,010	140	12.6	1107	851,450	136	12.3	1107
Seattle	50	2,597,580	134	12.0	1117	2,385,040	130	11.8	1100
New York	75	8,607,600	210	18.5	1133	7,953,270	201	17.5	1149
Los Angeles	59	5,686,140	160	13.3	1207	5,235,950	155	13.2	1178
Miami	34	1,830,020	162	13.2	1227	1,839,810	162	13.8	1175
San Francisco	52	3,840,890	190	14.6	1306	3,280,060	192	14.2	1353

City-Pair Markets with the Largest Percentage Increase
 First Quarter 1997 vs 1996

City-Pair		Average One Way Fare				Passengers			
		1997	1996	Amount Change	Percent Change	1997	1996	Amount Change	Percent Change
Atlanta	Detroit	246	107	139	129.9	72,720	102,870	(30,150)	-29.3
Columbus, OH	Washington	153	78	75	96.2	33,750	54,450	(20,700)	-38.0
Atlanta	Dallas/Fr. Worth	223	120	103	85.8	172,260	195,750	(23,490)	-12.0
Chicago	Des Moines	207	113	94	83.2	25,380	41,490	(16,110)	-38.8
Raleigh/Durham	Washington	167	94	73	77.7	36,360	45,180	(8,820)	-19.5
Atlanta	Indianapolis	175	100	75	75.0	33,300	48,150	(14,850)	-30.8
Atlanta	Nashville	223	133	90	67.7	30,690	47,520	(16,830)	-35.4
Omaha	Phoenix	99	60	39	65.0	63,810	83,520	(19,710)	-23.6
Atlanta	Columbia, SC	161	98	63	64.3	16,020	25,740	(9,720)	-37.8
Atlanta	Jackson, MS	173	106	67	63.2	19,530	27,090	(7,560)	-27.9
Colorado Springs	Phoenix	81	50	31	62.0	59,040	89,550	(30,510)	-34.1
Atlanta	Raleigh/Durham	142	89	53	59.6	93,420	101,160	(7,740)	-7.7
Atlanta	Hartford	264	174	90	51.7	35,280	44,100	(8,820)	-20.0
Boston	Raleigh/Durham	198	131	67	51.1	33,840	37,620	(3,780)	-10.0
Denver	Salt Lake City	104	69	35	50.7	94,410	119,520	(25,110)	-21.0
Baltimore	Columbus, OH	149	100	49	49.0	15,300	14,760	540	3.7
Boston	Columbus, OH	176	123	53	43.1	29,250	38,520	(9,270)	-24.1
Denver	Des Moines	183	128	55	43.0	16,110	18,450	(2,340)	-12.7
Atlanta	Charlotte	210	148	62	41.9	49,590	52,560	(2,970)	-5.7
Atlanta	Pittsburgh	207	146	61	41.8	39,510	47,250	(7,740)	-16.4
Chicago	Washington	218	155	63	40.6	150,930	168,120	(17,190)	-10.2
Atlanta	Miami	147	106	41	38.7	96,660	122,400	(25,740)	-21.0
Las Vegas	Washington	251	183	68	37.2	24,930	33,120	(8,190)	-24.7
Boston	Memphis	281	206	75	36.4	12,330	11,880	450	3.8
New York	Phoenix	270	198	72	36.4	148,950	161,100	(12,150)	-7.5
Miami	Tampa	76	56	20	35.7	21,330	50,850	(29,520)	-58.1
Denver	Milwaukee	205	152	53	34.9	20,700	18,630	2,070	11.1
Atlanta	Cincinnati	267	198	69	34.8	30,240	27,450	2,790	10.2
Kansas City	Salt Lake City	105	78	27	34.6	24,570	27,270	(2,700)	-9.9
Dallas/ Ft. Worth	Seattle	312	232	80	34.5	46,170	54,000	(7,830)	-14.5
Dallas/ Ft. Worth	Denver	173	129	44	34.1	123,930	147,510	(23,580)	-16.0
Milwaukee	Minneapolis	174	130	44	33.8	41,130	43,470	(2,340)	-5.4
Las Vegas	New York	207	155	52	33.5	162,990	211,050	(48,060)	-22.8
Dallas/ Ft. Worth	Wichita	84	63	21	33.3	23,670	30,510	(6,840)	-22.4
Phoenix	Santa Ana	119	90	29	32.2	62,550	26,280	36,270	138.0
Atlanta	Tampa	115	87	28	32.2	148,230	154,170	(5,940)	-3.9
Kansas City	Phoenix	107	81	26	32.1	80,820	70,380	10,440	14.8
Minneapolis	Omaha	165	125	40	32.0	18,990	20,790	(1,800)	-8.7
Boise	Salt Lake City	54	41	13	31.7	32,310	38,970	(6,660)	-17.1
Boise	Las Vegas	75	57	18	31.6	21,600	21,960	(360)	-1.6
						2,262,600	2,675,160	(412,560)	-15.4

City-Pair Markets with the Largest Percentage Decrease

First Quarter 1997 vs 1996

City-Pair		Average One Way Fare				Passengers			
		1997	1996	Amount	Percent	1997	1996	Amount	Percent
				Change	Change			Change	Change
Orlando	San Antonio	102	438	-336	-76.7	27,720	21,690	6,030	27.8
Baltimore	Providence	50	202	-152	-75.2	108,990	9,900	99,090	1000.9
Kansas City	Minneapolis	72	225	-153	-68.0	64,620	34,020	30,600	89.9
Ft. Lauderdale	Jacksonville	55	163	-108	-66.3	41,670	360	41,310	11475.0
Dallas/ Ft. Worth	Long Beach	96	245	-149	-60.8	22,410	1,260	21,150	1678.6
Houston	Providence	154	368	-214	-58.2	15,570	3,870	11,700	302.3
Birmingham	Orlando	81	189	-108	-57.1	19,620	16,380	3,240	19.8
Phoenix	Providence	135	283	-148	-52.3	16,830	4,410	12,420	281.6
Colorado Springs	Miami	120	248	-128	-51.6	18,270	3,420	14,850	434.2
Denver	Reno	100	205	-105	-51.2	25,110	11,070	14,040	126.8
Chicago	Providence	128	258	-130	-50.4	47,340	20,250	27,090	133.8
Orlando	Providence	98	195	-97	-49.7	72,900	40,950	31,950	78.0
Atlanta	Valparaiso	80	158	-78	-49.4	13,860	180	13,680	7600.0
Cleveland	Providence	118	233	-115	-49.4	16,650	3,510	13,140	374.4
Atlantic City	Detroit	33	65	-32	-49.2	11,970	14,310	(2,340)	-16.4
Chicago	Wichita	127	248	-121	-48.8	21,330	8,820	12,510	141.8
Atlanta	Mobile	106	200	-94	-47.0	27,270	11,430	15,840	138.6
Denver	St. Louis	117	219	-102	-46.6	70,470	36,360	34,110	93.8
Nashville	Orlando	89	161	-72	-44.7	56,070	25,200	30,870	122.5
San Francisco	Santa Ana	63	111	-48	-43.2	173,610	85,680	87,930	102.6
New Orleans	Orlando	79	138	-59	-42.8	43,830	9,990	33,840	338.7
New York	Richmond	142	246	-104	-42.3	46,080	33,660	12,420	36.9
San Francisco	Santa Barbara	79	133	-54	-40.6	26,100	10,170	15,930	156.6
Atlanta	Minneapolis	156	261	-105	-40.2	66,240	47,880	18,360	38.3
Colorado Springs	Portland, OR	118	194	-76	-39.2	12,870	5,490	7,380	134.4
Jacksonville	New Orleans	93	150	-57	-38.0	13,860	5,400	8,460	156.7
Chicago	Greenville, SC	165	262	-97	-37.0	12,870	6,660	6,210	93.2
Baltimore	Jacksonville	125	198	-73	-36.9	28,980	15,750	13,230	84.0
Los Angeles	Providence	201	311	-110	-35.4	14,400	6,120	8,280	135.3
Miami	Phoenix	210	324	-114	-35.2	17,640	11,340	6,300	55.6
Austin	Orlando	126	194	-68	-35.1	19,170	10,260	8,910	86.8
Jacksonville	Nashville	93	143	-50	-35.0	16,020	9,360	6,660	71.2
Dallas/ Ft. Worth	Jackson, MS	136	206	-70	-34.0	13,860	10,620	3,240	30.5
Las Vegas	Miami	177	265	-88	-33.2	27,900	12,150	15,750	129.6
Baltimore	Salt Lake City	116	171	-55	-32.2	44,190	19,440	24,750	127.3
						1,276,290	567,360	708,930	125.0

SPECIAL FEATURE

Illustrations of new entry effects on price and traffic (See Charts on pages 1-4 following.)

As we indicated in our initial report, one of our goals is to respond to consumer input. In this regard, there has been considerable interest in markets that experienced large increases or decreases in average fares. In most instances, large changes in average fares are directly attributable to entry or exit by a low-cost carrier. In our second report, we included several examples of how new entry resulted in large decreases in average fares. In this report we are providing additional details on how low fare exit affects average fares.

The charts in the second report show that the fares that many low-cost carriers charge can greatly expand the air travel market, enabling many who would otherwise not travel by air to do so. They also provide competitive alternatives for many travelers who would otherwise have to pay higher fares, and often compete down the prices of incumbent carriers who previously charged much higher prices.

The charts in this report suggest that the low fares and market expansion resulting from low cost entry quickly disappear when the low-cost airlines exit a market.

The charts on pages 1 through 4 (Charts A1-D2) illustrate the effects on traffic, average fares, and competitors in four city-pair markets—Detroit-Philadelphia, where Spirit Airlines exited; Kansas City-Minneapolis, where Vanguard Airlines exited; and Atlanta-Pittsburgh, and Atlanta-Detroit, where ValuJet exited. In each chart, the data show the number of passengers broken down by the fare paid in \$25 fare increments. As with the charts in our second report, these charts show data for periods before and after low-cost new entry. In addition, the charts in this report show data after the exit of the low-cost airline, for the most current period. In some cases the departure of the low-cost carriers is so recent that the full effects of its exit may not yet be reflected in the data.

Charts A1, B1, C1, and D1 at the tops of pages 1 through 4 all provide traffic by fare increment for the total market for periods before, during and after low-cost carrier entry. The data shown to the right of each chart show the total passengers, average fares, and total revenue for each period reflected in the chart. These charts show how the entry of low-cost carrier service changes the structure of fares in the market and increases traffic volume.

In each instance after low-cost carrier entry, traffic volumes at low fare levels increased substantially, the level of the lowest fares in the market were reduced substantially, and most passengers who had previously paid higher fares before low-cost carrier entry paid lower fares after such entry.

Conversely, when the low-cost carriers exited, the traffic volumes dramatically shrank to the pre-low fare carrier level and average fares increased. In fact, in three of the four examples, average fares rose to levels substantially greater than before new entry.

Charts A2, B2, C2, and D2 all provide traffic by fare increment for the total market before and after new entry only. This is the same information as graphed in charts A1, B1, C1, and D1, respectively, but is shown without the during-new-entry information so that the difference in price distribution can be more easily seen. The number of low fare passengers during the period when low-cost carriers operated was so great that it compressed the traffic for other periods to the point that changes were not readily apparent.

To illustrate, Chart A1 for Detroit-Philadelphia shows that after Spirit entered the number of passengers who paid fares between \$51 and \$75 surged to about 80,000 passengers whereas the number of passengers who paid between \$351 and \$375 precipitously declined. Before Spirit's entry only 4,500 passengers paid fares in the \$51 to \$75 range while 13,000 paid fares in the \$351-\$375 range. For the first quarter of 1997, after Spirit exited, only 1,200 passengers paid fares in the \$51-\$75 range while almost 17,000 passengers paid fares between \$375 and \$400, which resulted in an almost threefold increase in average fare. The message for consumers in this instance is that while some low fares continue to be available, they are quite limited. Price conscious consumers should carefully follow the advice laid out in the *Getting the Best Air Fare* fact sheet to give themselves the best chance of securing one of the limited number of low fare seats made available.

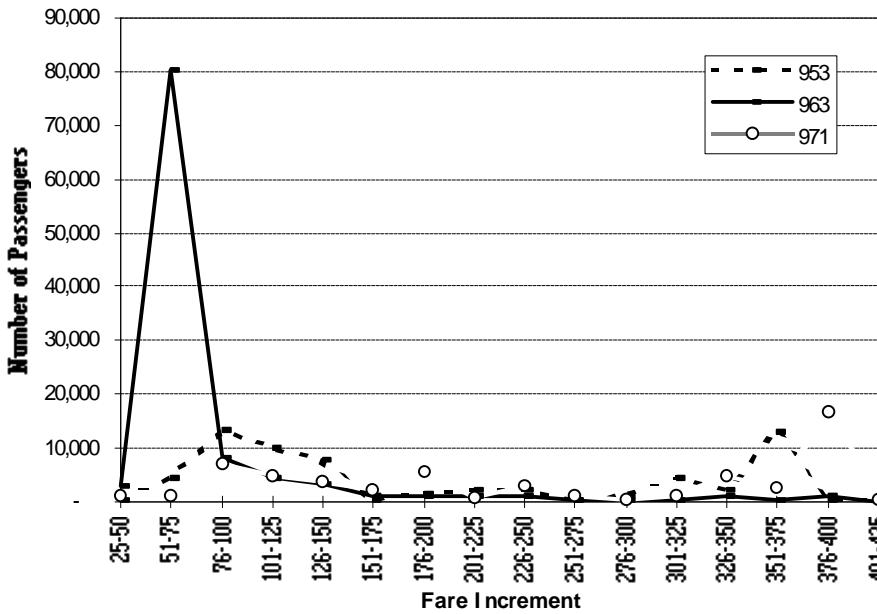
Chart A2 more clearly shows the after-Spirit consequence of fewer low fare sales and, at the same time, an increase in fares for non-discretionary travelers who pay more for unrestricted fares.

Chart B1, for the Kansas City-Minneapolis market is interesting because Vanguard has entered the market a second time. The market experience for its initial entry and exit is similar to that in the Detroit-Philadelphia market for Spirit, where entry produced a very large traffic gain and reduction in average fare, followed by traffic declines and an increase in average fare upon the low-cost carrier's exit. Upon Vanguard's reentry into the Kansas City-Minneapolis market, still more passengers traveled at still lower fares than when Vanguard first entered the market.

X X X

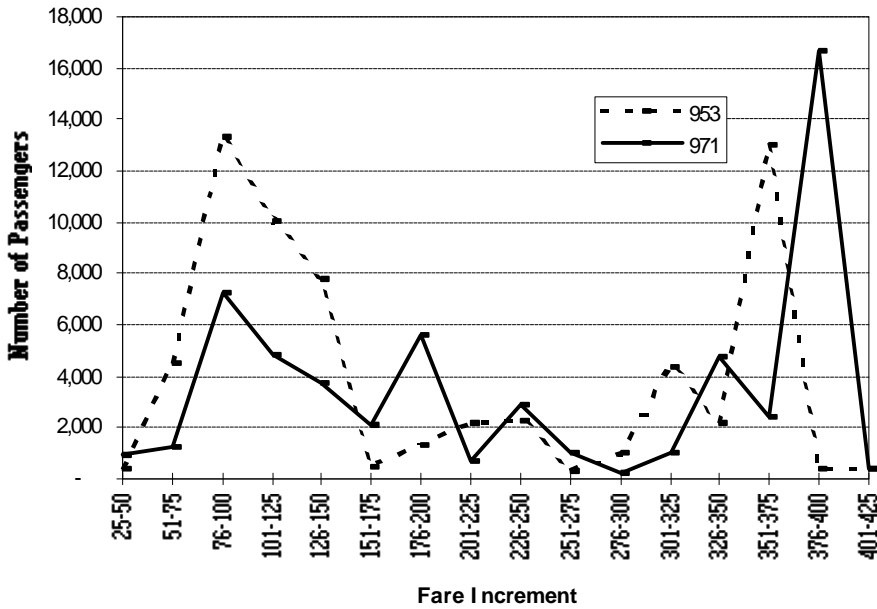
Detroit-Philadelphia
Passengers by \$25 Fare Increment
Before, During and After Spirit (all carriers)

Chart A-1



Detroit-Philadelphia
Passengers by \$25 Fare Increment
Before and After Spirit (all carriers)

Chart A-2



Passengers:		Avg. Fare:		Revenue	
		(000's):		(000's):	
Qtr 95/3	64,500	Qtr 95/3	197	Qtr 95/3	12,678
Qtr 96/3	108,290	Qtr 96/3	88	Qtr 96/3	9,491
Qtr 97/1	57,070	Qtr 97/1	252	Qtr 97/1	14,397

Chart B-1

**Kansas City-Minneapolis
Passengers by \$25 Fare Increment
Before, During and After Vanguard (all carriers)**

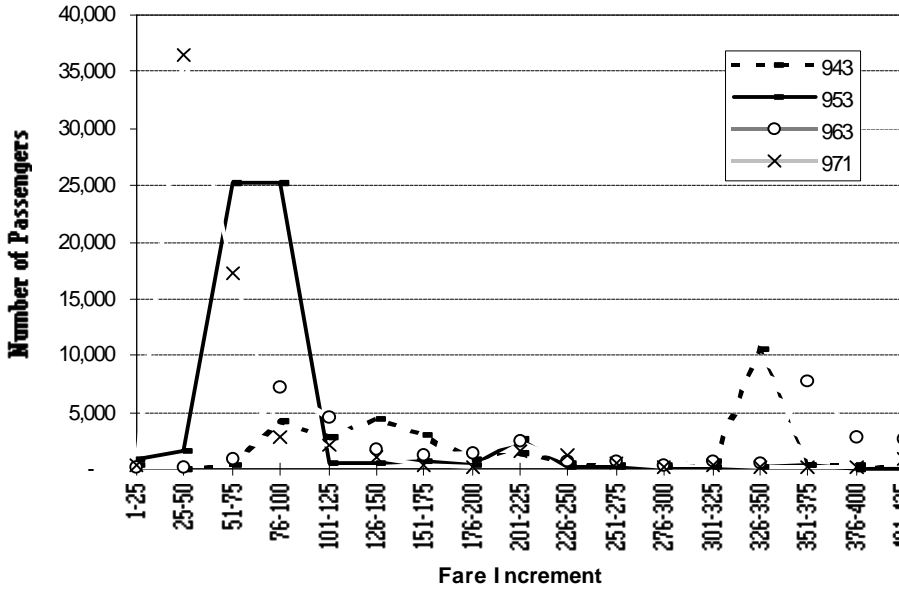
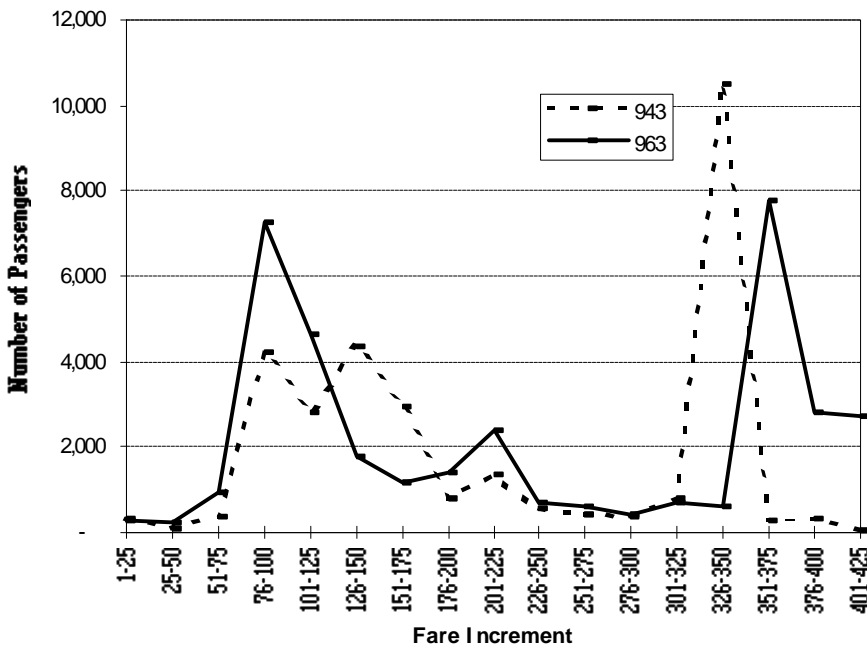
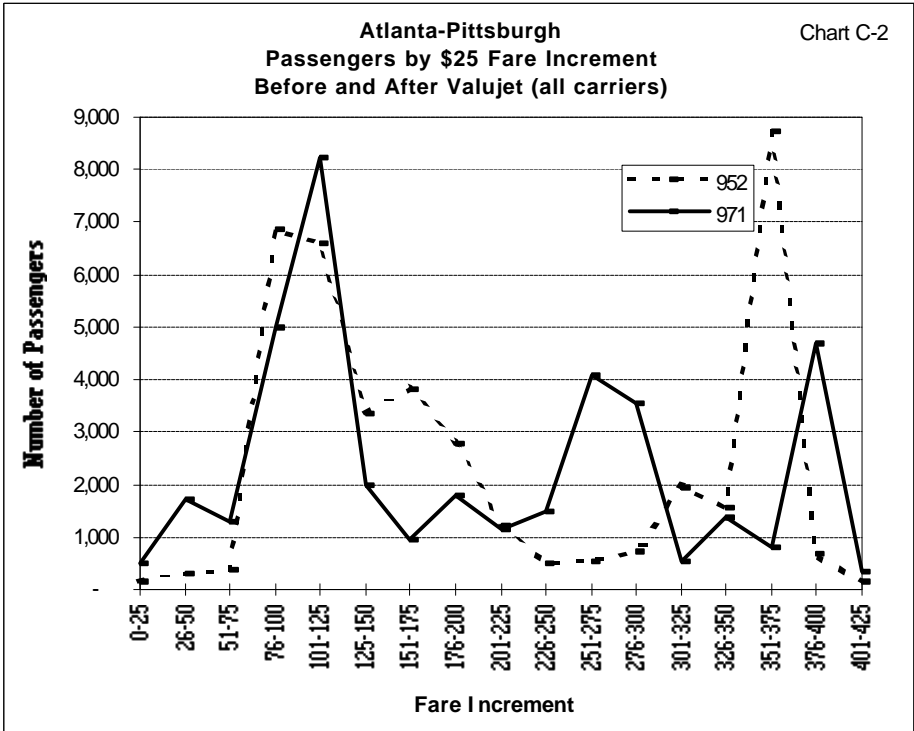
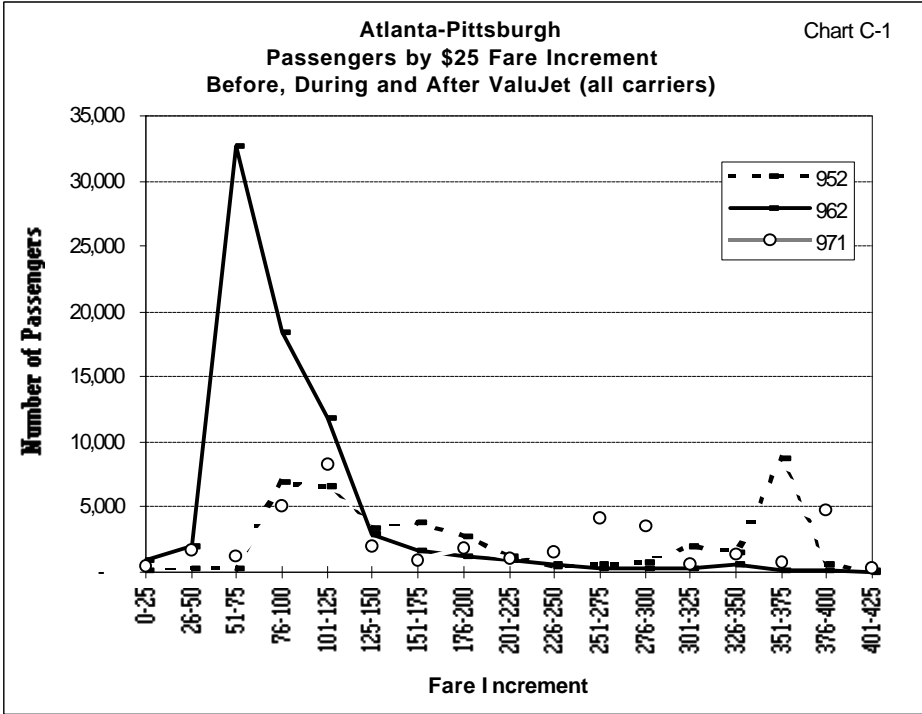


Chart B-2

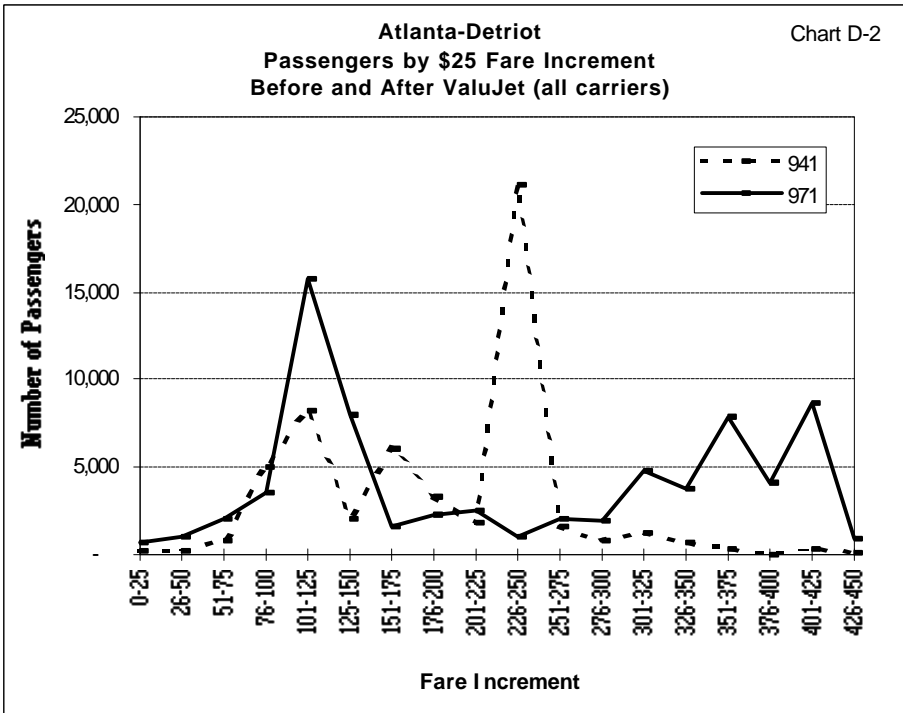
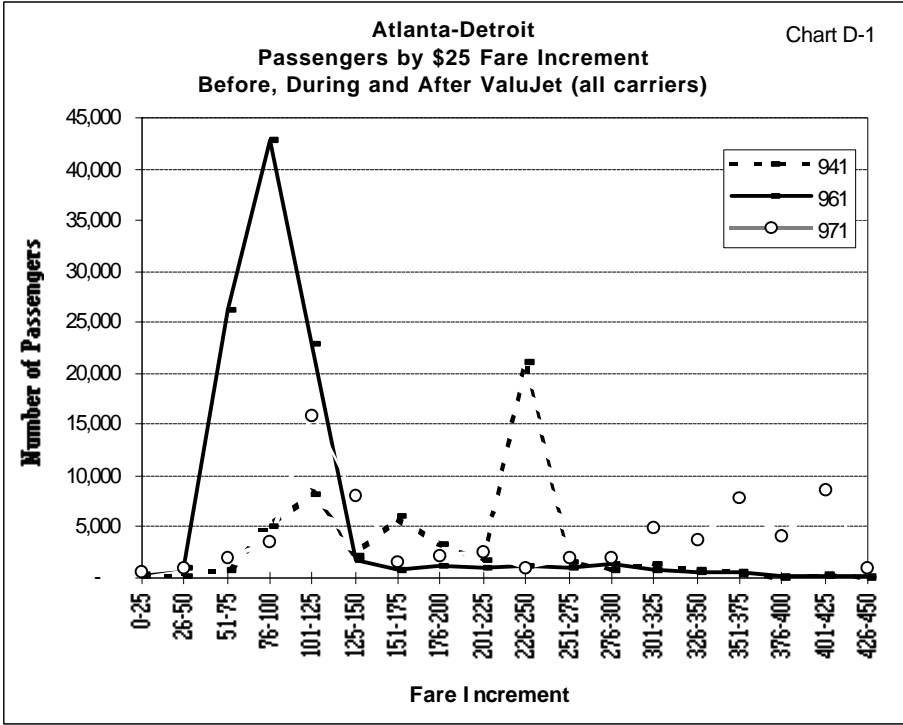
**Kansas City-Minneapolis
Passengers by \$25 Fare Increment
Before and After Vanguard (all carriers)**



	Passengers:	Avg. Fare:	Revenue (000's):
Qtr 94/3	30,740	220	6,761
Qtr 95/3	58,670	85	4,991
Qtr 96/3	36,900	232	8,552
Qtr 97/1	66,030	72	4,734



	Passengers:	Avg. Fare:	Revenue (000's):
Qtr 95/2	41,240	215	8,864
Qtr 96/2	75,630	94	7,117
Qtr 97/1	40,410	207	8,360



	Passengers:	Avg. Fare:	Revenue (000's):
Qtr 94/1	54,740	206	11,258
Qtr 96/1	122,470	109	13,336
Qtr 97/1	74,350	246	18,269