

**IMPROVED SAFETY PERFORMANCE  
FUNCTIONS FOR SIGNALIZED  
INTERSECTIONS**

**Appendix F Final Report**

**SPR 756**



Oregon Department of Transportation



**APPENDIX F**

**VALIDATION SITE INFORMATION**



# APPENDIX F - VALIDATION SITE INFORMATION

## LIST OF TABLES

Table F. 1: Location and Geometric Configuration – Intersection #51 .....	2
Table F.2: Lane Geometry – Intersection #51 .....	3
Table F.3: Location and Geometric Configuration – Intersection #52 .....	5
Table F.4: Lane Geometry – Intersection #52 .....	6
Table F.5: Location and Geometric Configuration – Intersection #53 .....	8
Table F.6: Lane Geometry – Intersection #53 .....	9
Table F.7: Location and Geometric Configuration – Intersection #54 .....	11
Table F.8: Lane Geometry – Intersection #54 .....	12
Table F.9: Location and Geometric Configuration – Intersection #55 .....	14
Table F.10: Lane Geometry – Intersection #55 .....	15
Table F.11: Location and Geometric Configuration – Intersection #56 .....	17
Table F.12: Lane Geometry – Intersection #56 .....	18
Table F.13: Location and Geometric Configuration – Intersection #57 .....	20
Table F.14: Lane Geometry – Intersection #57 .....	21
Table F.15: Location and Geometric Configuration – Intersection #58 .....	23
Table F.16: Lane Geometry – Intersection #58 .....	24
Table F.17: Location and Geometric Configuration – Intersection #59 .....	26
Table F.18: Lane Geometry – Intersection #59 .....	27
Table F.19: Location and Geometric Configuration – Intersection #60 .....	29
Table F.20: Lane Geometry – Intersection #60 .....	30
Table F. 21: Location and Geometric Configuration – Intersection #61 .....	32
Table F.22: Lane Geometry – Intersection #61 .....	33
Table F.23: Location and Geometric Configuration – Intersection #62 .....	35
Table F.24: Lane Geometry – Intersection #62 .....	36
Table F.25: Location and Geometric Configuration – Intersection #63 .....	38
Table F. 26: Lane Geometry – Intersection #63 .....	39
Table F.27: Location and Geometric Configuration – Intersection #64 .....	41
Table F.28: Lane Geometry – Intersection #64 .....	42
Table F.29: Location and Geometric Configuration – Intersection #65 .....	44
Table F.30: Lane Geometry – Intersection #65 .....	45
Table F.31: Location and Geometric Configuration – Intersection #66 .....	47
Table F.32: Lane Geometry – Intersection #66 .....	48
Table F.33: Location and Geometric Configuration – Intersection #67 .....	50
Table F.34: Lane Geometry – Intersection #67 .....	51
Table F.35: Location and Geometric Configuration – Intersection #68 .....	53
Table F.36: Lane Geometry – Intersection #68 .....	54
Table F.37: Location and Geometric Configuration – Intersection #69 .....	56
Table F.38: Lane Geometry – Intersection #69 .....	57
Table F.39: Location and Geometric Configuration – Intersection #70 .....	59
Table F.40: Lane Geometry – Intersection #70 .....	60
Table F.41: Location and Geometric Configuration – Intersection #71 .....	62
Table F.42: Lane Geometry – Intersection #71 .....	63
Table F.43: Location and Geometric Configuration – Intersection #72 .....	65
Table F.44: Lane Geometry – Intersection #72 .....	66
Table F.45: Location and Geometric Configuration – Intersection #73 .....	68
Table F.46: Lane Geometry – Intersection #73 .....	69
Table F.47: Location and Geometric Configuration – Intersection #74 .....	71
Table F.48: Lane Geometry – Intersection #74 .....	72
Table F.49: Location and Geometric Configuration – Intersection #75 .....	74
Table F.50: Lane Geometry – Intersection #75 .....	75

Table F.51: Location and Geometric Configuration – Intersection #76 .....	77
Table F.52: Lane Geometry – Intersection #76 .....	78
Table F.53: Location and Geometric Configuration – Intersection #77 .....	80
Table F.54: Lane Geometry – Intersection #77 .....	81
Table F.55: Location and Geometric Configuration – Intersection #78 .....	83
Table F.56: Lane Geometry – Intersection #78 .....	84
Table F.57: Location and Geometric Configuration – Intersection #79 .....	86
Table F.58: Lane Geometry – Intersection #79 .....	87
Table F.59: Location and Geometric Configuration – Intersection #80 .....	89
Table F.60: Lane Geometry – Intersection #80 .....	90
Table F.61: Location and Geometric Configuration – Intersection #81 .....	92
Table F.62: Lane Geometry – Intersection #81 .....	93
Table F.63: Location and Geometric Configuration – Intersection #82 .....	95
Table F.64: Lane Geometry – Intersection #82 .....	96
Table F.65: Location and Geometric Configuration – Intersection #83 .....	98
Table F.66: Lane Geometry – Intersection #83 .....	99
Table F.67: Location and Geometric Configuration – Intersection #84 .....	101
Table F.68: Lane Geometry – Intersection #84 .....	102
Table F.69: Location and Geometric Configuration – Intersection #85 .....	104
Table F.70: Lane Geometry – Intersection #85 .....	105

## LIST OF FIGURES

Figure F.1: Photos for Intersection #51 .....	1
Figure F.2: Photos for Intersection #52 .....	4
Figure F.3: Photos for Intersection #53 .....	7
Figure F.4: Photos for Intersection #54 .....	10
Figure F.5: Photos for Intersection #55 .....	13
Figure F.6: Photos for Intersection #56 .....	16
Figure F.7: Photos for Intersection #57 .....	19
Figure F.8: Photos for Intersection #58 .....	22
Figure F.9: Photos for Intersection #59 .....	25
Figure F.10: Photos for Intersection #60 .....	28
Figure F.11: Photos for Intersection #61 .....	31
Figure F.12: Photos for Intersection #62 .....	34
Figure F.13: Photos for Intersection #63 .....	37
Figure F.14: Photos for Intersection #64 .....	40
Figure F.15: Photos for Intersection #65 .....	43
Figure F.16: Photos for Intersection #66 .....	46
Figure F.17: Photos for Intersection #67 .....	49
Figure F.18: Photos for Intersection #68 .....	52
Figure F.19: Photos for Intersection #69 .....	55
Figure F.20: Photos for Intersection #70 .....	58
Figure F.21: Photos for Intersection #71 .....	61
Figure F.22: Photos for Intersection #72 .....	64
Figure F.23: Photos for Intersection #73 .....	67
Figure F.24: Photos for Intersection #74 .....	70
Figure F.25: Photos for Intersection #75 .....	73
Figure F.26: Photos for Intersection #76 .....	76
Figure F.27: Photos for Intersection #77 .....	79
Figure F.28: Photos for Intersection #78 .....	82
Figure F.29: Photos for Intersection #79 .....	85
Figure F.30: Photos for Intersection #80 .....	88
Figure F.31: Photos for Intersection #81 .....	91

Figure F.32: Photos for Intersection #82 .....	94
Figure F.33: Photos for Intersection #83 .....	97
Figure F.34: Photos for Intersection #84 .....	100
Figure F.35: Photos for Intersection #85 .....	103





## REGION 1 SITES FOR VALIDATION

**Intersection 51: NE 238th Dr. at NE Arata Rd. / Maple Blvd., Wood Village (Multnomah County)**



**Aerial Photo**



**Street View**

Figure F.1: Photos for Intersection #51

**Table F. 1: Location and Geometric Configuration – Intersection #51**

Location	Latitude: 45.534228		Longitude: -122.418464	
Milepost	--			
Int. Type <sup>1</sup>	1			
ODOT Region	Region 1			
Road 1 Name	NE 238 <sup>th</sup> Dr.		Road 2 Name	NE Arata Rd. / Maple Blvd.
No. of lanes <sup>2</sup>	NB: 3 (1,2), SB: 4 (2,2)		No. of lanes <sup>2</sup>	2 (1,1)
Road No.	--		Road No.	--
<b>Description</b>	<b>Road 1</b>		<b>Road 2</b>	
Direction (NB, SB, WB, EB)	NB	SB	WB	EB
Speed Limit (mph)	35	35	20	35
Road Width <sup>3</sup> (Face-face, ft)	32	42	23	38
Road Width at Int. <sup>3</sup> (Face-face at stop bar, ft)	56	59	45	42
Closest Int. Upstream <sup>4</sup> (ft. behind stop bar)	2594	336	155	196
Closest Int. Downstream <sup>4</sup> (ft. behind stop bar)	407	2648	258	215
1 <sup>st</sup> & 2 <sup>nd</sup> Closest Dwy. to Int. (ft. behind stop bar)	89	115	770	127
Dwy. Location	1	1	2	1
Dwy. Type	1	1	1	1
Median Type	1	1	6	1
On-Street Parking	2	4	4	3
On-Street Parking Location (ends ft. behind stop bar)	Unclear	N/A	N/A	Unclear
Bike Lane	4	4	4	4
Bus Stop Near Int.	3	3	3	3
Bus Stops Location (ft. behind stop bar)	N/A	N/A	N/A	N/A
Traffic Control Device <sup>5</sup>	2	2	13	2
Signs on Traffic Light Pole/Span wire	0	0	0	0
Pedestrian Crossing Light	1	1	1	1

**Table F.2: Lane Geometry – Intersection #51**

Description	Road 1		Road 2	
Exclusive Left Turn Lane per direction <sup>6</sup>	1	1	0	0
Shared - Left Turn & Thru Lane <sup>6</sup>	0	0	0	0
Exclusive Thru Lane <sup>6</sup>	0	1	0	0
Shared - Right Turn & Thru Lane <sup>6</sup>	1	1	0	0
Exclusive Right Turn Lane <sup>6</sup>	0	0	0	0
Shared – Left turn / thru / right turn lane <sup>6</sup>	0	0	1	1
Free Right Turn Lane <sup>6</sup>	0	0	0	0
Right Turn Lane Length <sup>7</sup> (ft. behind stop bar)	N/A	N/A	N/A	N/A
Right Turn Lane - Taper Length <sup>7</sup> (ft)	N/A	N/A	N/A	N/A
Left Turn Lane Length <sup>7</sup> (ft. behind stop bar)	100	99	N/A	N/A
Left Turn Lane - Taper Length <sup>7</sup> (ft.)	95	115	N/A	N/A
Offset Left Turn Lane <sup>8</sup>	2	2	3	3
Are chevrons properly oriented? <sup>9</sup>	3	3	1	3
Channelization <sup>10</sup>	3	3	3	3
Exclusive Left Turn Lane Signalization <sup>11</sup>	1	1	0	0
Shared turn & thru lane/Exclusive Thru Lane Signalization <sup>11</sup>	1	1	1	1
Exclusive Right Turn Lane Signalization <sup>11</sup>	0	0	0	0

**Intersection 52: SW Greenburg Rd. at SW Washington Square Rd., Tigard (Washington County)**



**Aerial Photo**



**Street View**

**Figure F.2: Photos for Intersection #52**

**Table F.3: Location and Geometric Configuration – Intersection #52**

Location	Latitude: 45.445906		Longitude: -122.776444					
Milepost	--							
Int. Type <sup>1</sup>	1							
ODOT Region	Region 1							
Road 1 Name	SW Greenburg Rd.		Road 2 Name	SW Washington Square Rd.				
No. of lanes <sup>2</sup>	4 (2,2)		No. of lanes <sup>2</sup>	WB: 3 (2,1), EB: 4 (2,2)				
Road No.	--		Road No.	--				
<b>Description</b>	<b>Road 1</b>		<b>Road 2</b>					
Direction (NB, SB, WB, EB)	NB      SB		WB      EB					
Speed Limit (mph)	35      35		15      15					
Road Width <sup>3</sup> (Face-face, ft)	86      65		36      66					
Road Width at Int. <sup>3</sup> (Face-face at stop bar, ft)	92      71		42      68					
Closest Int. Upstream <sup>4</sup> (ft. behind stop bar)	420      299		92      414					
Closest Int. Downstream <sup>4</sup> (ft. behind stop bar)	383      514		523      206					
1 <sup>st</sup> & 2 <sup>nd</sup> Closest Dwy. to Int. (ft. behind stop bar)	--	--	239	--	--	--	214	--
Dwy. Location	0	0	1	0	0	0	1	0
Dwy. Type	0	0	2	0	0	0	2	0
Median Type	1		1		1		4	
On-Street Parking	4		4		4		4	
On-Street Parking Location (ends ft. behind stop bar)	N/A		N/A		N/A		N/A	
Bike Lane	3		4		4		4	
Bus Stop Near Int.	3		1		3		3	
Bus Stops Location (ft. behind stop bar)	N/A		29		N/A		N/A	
Traffic Control Device <sup>5</sup>	1		1		1		12	
Signs on Traffic Light Pole/Span wire	1		0		1		4, 2	
Pedestrian Crossing Light	1		1		4		2	

**Table F.4: Lane Geometry – Intersection #52**

Description	Road 1		Road 2	
Exclusive Left Turn Lane per direction <sup>6</sup>	2	1	1	0
Shared - Left Turn & Thru Lane <sup>6</sup>	0	0	0	1
Exclusive Thru Lane <sup>6</sup>	1	1	0	0
Shared - Right Turn & Thru Lane <sup>6</sup>	1	1	0	0
Exclusive Right Turn Lane <sup>6</sup>	0	0	0	2
Shared – Left turn / thru / right turn lane <sup>6</sup>	0	0	1	0
Free Right Turn Lane <sup>6</sup>	0	0	0	0
Right Turn Lane Length <sup>7</sup> (ft. behind stop bar)	N/A	N/A	N/A	N/A
Right Turn Lane - Taper Length <sup>7</sup> (ft)	N/A	N/A	N/A	N/A
Left Turn Lane Length <sup>7</sup> (ft. behind stop bar)	128	105	N/A	197
Left Turn Lane - Taper Length <sup>7</sup> (ft.)	81	78	N/A	45
Offset Left Turn Lane <sup>8</sup>	2	2	2	2
Are chevrons properly oriented? <sup>9</sup>	3	3	3	3
Channelization <sup>10</sup>	3	3	3	3
Exclusive Left Turn Lane Signalization <sup>11</sup>	3	3	1	0
Shared turn & thru lane/Exclusive Thru Lane Signalization <sup>11</sup>	1	1	1	4
Exclusive Right Turn Lane Signalization <sup>11</sup>	0	0	0	3

**Intersection 53: SE Tualatin Valley Hwy. (OR 8) at SE Century Blvd., Hillsboro  
(Washington County)**



**Aerial Photo**



**Street View**

**Figure F.3: Photos for Intersection #53**

**Table F.5: Location and Geometric Configuration – Intersection #53**

Location	Latitude: 45.499076		Longitude: -122.917368					
Milepost	9.06							
Int. Type <sup>1</sup>	1							
ODOT Region	Region 1							
Road 1 Name	SE Tualatin Valley Hwy.		Road 2 Name	SE Century Blvd.				
No. of lanes <sup>2</sup>	WB: 4 (2,2), EB: 5 (2,2,TWLTL)		No. of lanes <sup>2</sup>	NB: 2 (1,1), SB: 4 (1, 2, TWLTL)				
Road No.	OR 8		Road No.	--				
<b>Description</b>	<b>Road 1</b>			<b>Road 2</b>				
Direction (NB, SB, WB, EB)	WB		EB		NB		SB	
Speed Limit (mph)	45		45		35		35	
Road Width <sup>3</sup> (Face-face, ft)	79		78		65		61	
Road Width at Int. <sup>3</sup> (Face-face at stop bar, ft)	85		83		74		76	
Closest Int. Upstream <sup>4</sup> (ft. behind stop bar)	1235		1325		656		508	
Closest Int. Downstream <sup>4</sup> (ft. behind stop bar)	1440		1348		617		763	
1 <sup>st</sup> & 2 <sup>nd</sup> Closest Dwy. to Int. (ft. behind stop bar)	313	890	432	732	355	355	351	351
Dwy. Location	1	1	2	2	1	2	2	1
Dwy. Type	2	2	2	5	2	2	2	2
Median Type	4		2		4		2	
On-Street Parking	4		4		4		4	
On-Street Parking Location (ends ft. behind stop bar)	N/A		N/A		N/A		N/A	
Bike Lane	3		3		4		3	
Bus Stop Near Int.	1		1		4		3	
Bus Stops Location (ft. behind stop bar)	41		41		N/A		N/A	
Traffic Control Device <sup>5</sup>	1		1		1		1	
Signs on Traffic Light Pole/Span wire	0		22, 20		5		5	
Pedestrian Crossing Light	1		1		1		1	

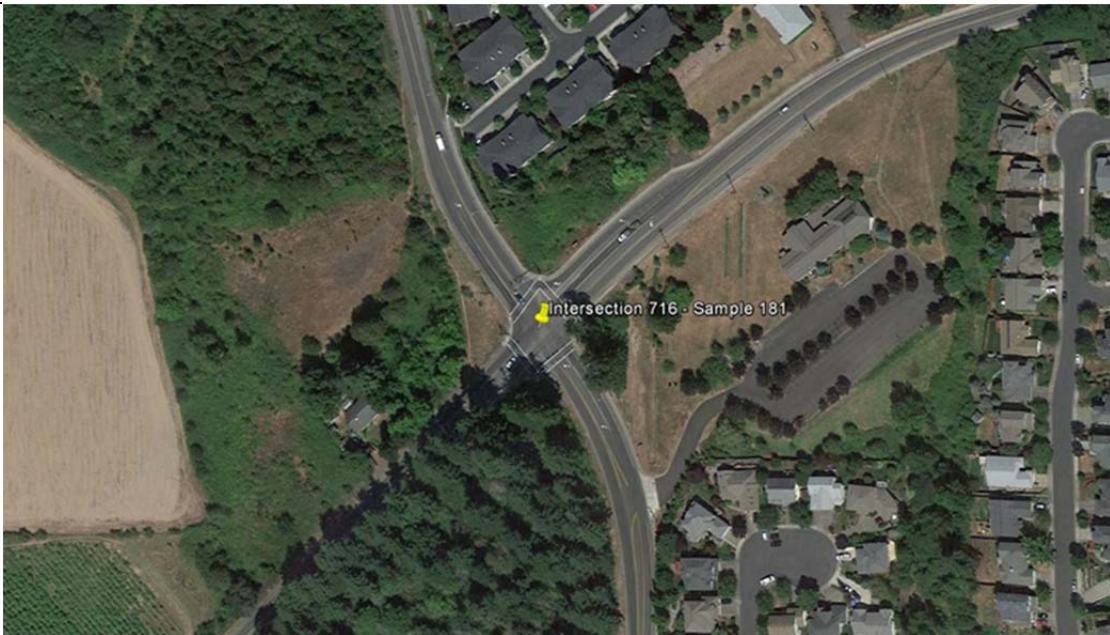


**Table F.6: Lane Geometry – Intersection #53**

Description	Road 1		Road 2	
Exclusive Left Turn Lane per direction <sup>6</sup>	1	1	1	1
Shared - Left Turn & Thru Lane <sup>6</sup>	0	0	0	0
Exclusive Thru Lane <sup>6</sup>	1	2	0	0
Shared - Right Turn & Thru Lane <sup>6</sup>	1	0	1	1
Exclusive Right Turn Lane <sup>6</sup>	0	1*	0	0
Shared – Left turn / thru / right turn lane <sup>6</sup>	0	0	0	0
Free Right Turn Lane <sup>6</sup>	0	0	0	0
Right Turn Lane Length <sup>7</sup> (ft. behind stop bar)	N/A	218	109	N/A
Right Turn Lane - Taper Length <sup>7</sup> (ft)	N/A	86	N/A	N/A
Left Turn Lane Length <sup>7</sup> (ft. behind stop bar)	356	200	109	164
Left Turn Lane - Taper Length <sup>7</sup> (ft.)	113	168	N/A	98
Offset Left Turn Lane <sup>8</sup>	2	2	2	2
Are chevrons properly oriented? <sup>9</sup>	3	3	3	3
Channelization <sup>10</sup>	3	3	3	3
Exclusive Left Turn Lane Signalization <sup>11</sup>	3	3	1	1
Shared turn & thru lane/Exclusive Thru Lane Signalization <sup>11</sup>	1	1	1	1
Exclusive Right Turn Lane Signalization <sup>11</sup>	0	3*	0	0

\*Right turn on red allowed during certain times of the day.

**Intersection 54: SW Farmington Rd. (OR 10) at SW Grabhorn Rd. / 209th Ave., Beaverton (Washington County)**



**Aerial Photo**



**Street View**

**Figure F.4: Photos for Intersection #54**

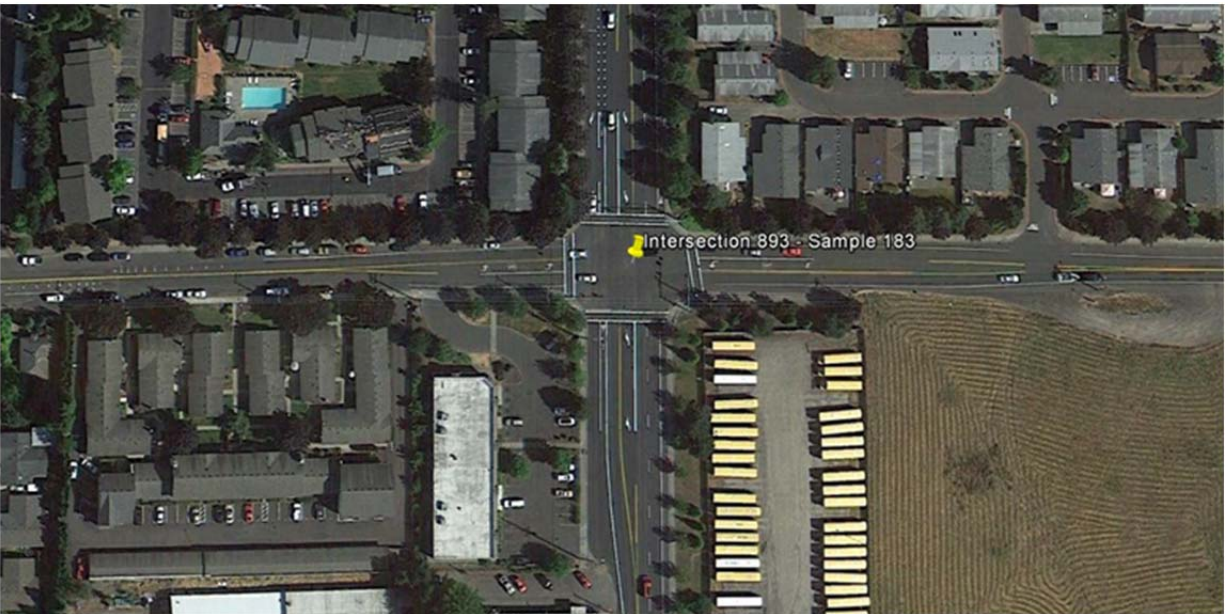
**Table F.7: Location and Geometric Configuration – Intersection #54**

Location	Latitude: 45.466577		Longitude: -122.892661	
Milepost	--			
Int. Type <sup>1</sup>	1			
ODOT Region	Region 1			
Road 1 Name	SW Farmington Rd.		Road 2 Name	SW Grabhorn Rd. / 209 <sup>th</sup> Ave.
No. of lanes <sup>2</sup>	2 (1,1)		No. of lanes <sup>2</sup>	2 (1,1)
Road No.	OR 10		Road No.	--
<b>Description</b>	<b>Road 1</b>		<b>Road 2</b>	
Direction (NB, SB, WB, EB)	WB	EB	NB	SB
Speed Limit (mph)	40	40	45	45
Road Width <sup>3</sup> (Face-face, ft)	34	28	34	32
Road Width at Int. <sup>3</sup> (Face-face at stop bar, ft)	75	59	57	60
Closest Int. Upstream <sup>4</sup> (ft. behind stop bar)	1172	3004	202	683
Closest Int. Downstream <sup>4</sup> (ft. behind stop bar)	3108	1261	787	312
1 <sup>st</sup> & 2 <sup>nd</sup> Closest Dwy. to Int. (ft. behind stop bar)	560	--	246	920
Dwy. Location	1	0	2	1
Dwy. Type	4	0	1	2
Median Type	1	1	1	1
On-Street Parking	4	4	4	4
On-Street Parking Location (ends ft. behind stop bar)	N/A	N/A	N/A	N/A
Bike Lane	3	4	4	4
Bus Stop Near Int.	3	3	3	3
Bus Stops Location (ft. behind stop bar)	N/A	N/A	N/A	N/A
Traffic Control Device <sup>5</sup>	1	1	1	1
Signs on Traffic Light Pole/Span wire	2	0	23	0
Pedestrian Crossing Light	1	1	1	1

**Table F.8: Lane Geometry – Intersection #54**

Description	Road 1		Road 2	
Exclusive Left Turn Lane per direction <sup>6</sup>	1	1	1	1
Shared - Left Turn & Thru Lane <sup>6</sup>	0	0	0	0
Exclusive Thru Lane <sup>6</sup>	1	0	0	0
Shared - Right Turn & Thru Lane <sup>6</sup>	0	1	1	1
Exclusive Right Turn Lane <sup>6</sup>	1	0	0	0
Shared – Left turn / thru / right turn lane <sup>6</sup>	0	0	0	0
Free Right Turn Lane <sup>6</sup>	0	0	0	0
Right Turn Lane Length <sup>7</sup> (ft. behind stop bar)	244	N/A	N/A	N/A
Right Turn Lane - Taper Length <sup>7</sup> (ft)	42	N/A	N/A	N/A
Left Turn Lane Length <sup>7</sup> (ft. behind stop bar)	216	200	127	178
Left Turn Lane - Taper Length <sup>7</sup> (ft.)	110	99	81	97
Offset Left Turn Lane <sup>8</sup>	2	2	2	2
Are chevrons properly oriented? <sup>9</sup>	3	3	3	3
Channelization <sup>10</sup>	3	3	3	3
Exclusive Left Turn Lane Signalization <sup>11</sup>	3	3	3	3
Shared turn & thru lane/Exclusive Thru Lane Signalization <sup>11</sup>	1	1	1	1
Exclusive Right Turn Lane Signalization <sup>11</sup>	5	0	0	0

**Intersection 55: SE Hogan Rd. at Roberts Ave. / SE Palmquist Rd., Gresham (Multnomah County)**



**Aerial Photo**



**Street View**

**Figure F.5: Photos for Intersection #55**

**Table F.9: Location and Geometric Configuration – Intersection #55**

Location	Latitude: 45.486819		Longitude: -122.413839	
Milepost	--			
Int. Type <sup>1</sup>	1			
ODOT Region	Region 1			
Road 1 Name	SE Hogan Rd.		Road 2 Name	Roberts Ave. / SE Palmquist Rd.
No. of lanes <sup>2</sup>	2 (1,1)		No. of lanes <sup>2</sup>	2 (1,1)
Road No.	--		Road No.	--
<b>Description</b>	<b>Road 1</b>		<b>Road 2</b>	
Direction (NB, SB, WB, EB)	NB	SB	WB	EB
Speed Limit (mph)	35	35	35	25
Road Width <sup>3</sup> (Face-face, ft)	43	48	42	41
Road Width at Int. <sup>3</sup> (Face-face at stop bar, ft)	69	71	49	49
Closest Int. Upstream <sup>4</sup> (ft. behind stop bar)	509	689	287	573
Closest Int. Downstream <sup>4</sup> (ft. behind stop bar)	785	488	694	409
1 <sup>st</sup> & 2 <sup>nd</sup> Closest Dwy. to Int. (ft. behind stop bar)	242	334	--	--
Dwy. Location	2	2	0	0
Dwy. Type	2	2	0	0
Median Type	1	1	1	1
On-Street Parking	1	4	1	3
On-Street Parking Location (ends ft. behind stop bar)	0	N/A	0	0 / 193
Bike Lane	3	3	4	4
Bus Stop Near Int.	3	3	3	3
Bus Stops Location (ft. behind stop bar)	N/A	N/A	N/A	N/A
Traffic Control Device <sup>5</sup>	1	1	1	1
Signs on Traffic Light Pole/Span wire	6	6	6	6
Pedestrian Crossing Light	1	1	1	1

**Table F.10: Lane Geometry – Intersection #55**

Description	Road 1		Road 2	
Exclusive Left Turn Lane per direction <sup>6</sup>	1	1	1	1
Shared - Left Turn & Thru Lane <sup>6</sup>	0	0	0	0
Exclusive Thru Lane <sup>6</sup>	1	1	0	0
Shared - Right Turn & Thru Lane <sup>6</sup>	1	0	1	1
Exclusive Right Turn Lane <sup>6</sup>	0	1	0	0
Shared – Left turn / thru / right turn lane <sup>6</sup>	0	0	0	0
Free Right Turn Lane <sup>6</sup>	0	0	0	0
Right Turn Lane Length <sup>7</sup> (ft. behind stop bar)	N/A	187	N/A	N/A
Right Turn Lane - Taper Length <sup>7</sup> (ft)	N/A	131	N/A	N/A
Left Turn Lane Length <sup>7</sup> (ft. behind stop bar)	97	93	103	75
Left Turn Lane - Taper Length <sup>7</sup> (ft.)	46	56	104	38
Offset Left Turn Lane <sup>8</sup>	2	2	2	2
Are chevrons properly oriented? <sup>9</sup>	3	3	3	3
Channelization <sup>10</sup>	3	3	3	3
Exclusive Left Turn Lane Signalization <sup>11</sup>	6	6	6	6
Shared turn & thru lane/Exclusive Thru Lane Signalization <sup>11</sup>	1	1	1	1
Exclusive Right Turn Lane Signalization <sup>11</sup>	0	1	0	0

## REGION 2 SITES FOR VALIDATION

**Intersection 56: Portland Rd. (OR 99W) at Villa Rd. (OR 219), Newberg (Yamhill County)**

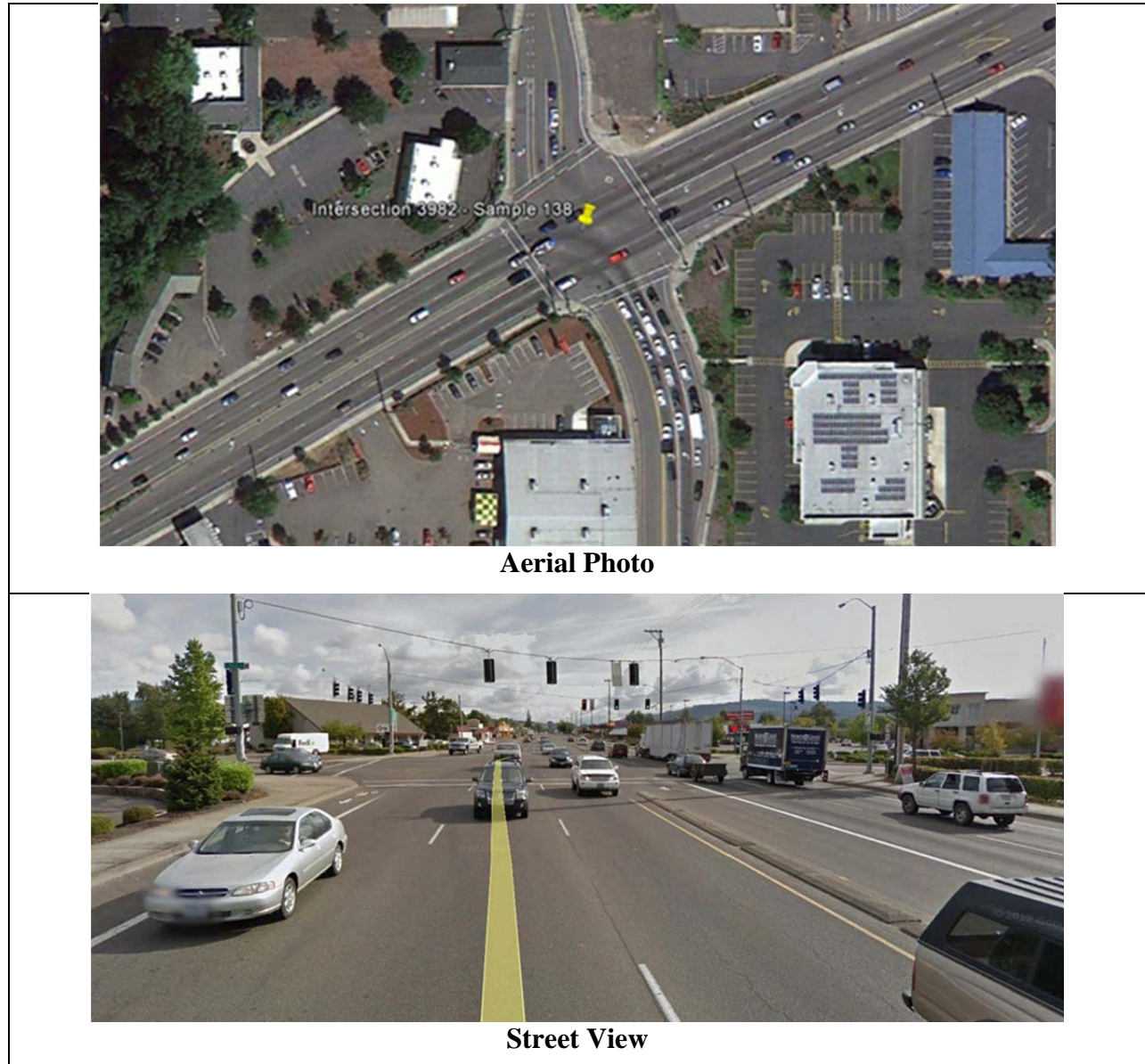


Figure F.6: Photos for Intersection #56



**Table F.11: Location and Geometric Configuration – Intersection #56**

Location	Latitude: 45.301221		Longitude: -122.962322					
Milepost	20.67							
Int. Type <sup>1</sup>	1							
ODOT Region	Region 2							
Road 1 Name	Portland Rd.		Road 2 Name	Villa Rd.				
No. of lanes <sup>2</sup>	WB: 4 (2,2), EB: 5 (2,3)		No. of lanes <sup>2</sup>	NB: 3 (2,1), SB: 2 (1,1)				
Road No.	OR 99W		Road No.	OR 219				
<b>Description</b>	<b>Road 1</b>			<b>Road 2</b>				
Direction (NB, SB, WB, EB)	WB		EB	NB	SB			
Speed Limit (mph)	35		35	25	25			
Road Width <sup>3</sup> (Face-face, ft)	74		86	52	40			
Road Width at Int. <sup>3</sup> (Face-face at stop bar, ft)	99		86	80	89			
Closest Int. Upstream <sup>4</sup> (ft. behind stop bar)	374		872	310	453			
Closest Int. Downstream <sup>4</sup> (ft. behind stop bar)	1005		495	596	453			
1 <sup>st</sup> & 2 <sup>nd</sup> Closest Dwy. to Int. (ft. behind stop bar)	193	248	207	364	--	--	56	114
Dwy. Location	1	1	1	1	0	0	1	1
Dwy. Type	2	2	2	2	0	0	2	2
Median Type	4		4	1	1			
On-Street Parking	4		4	4	4			
On-Street Parking Location (ends ft. behind stop bar)	N/A		N/A	N/A	N/A			
Bike Lane	3		3	3	3			
Bus Stop Near Int.	3		3	3	3			
Bus Stops Location (ft. behind stop bar)	N/A		N/A	N/A	N/A			
Traffic Control Device <sup>5</sup>	2		2	2	13			
Signs on Traffic Light Pole/Span wire	19		19	0	2			
Pedestrian Crossing Light	1		1	1	1			

**Table F.12: Lane Geometry – Intersection #56**

Description	Road 1		Road 2	
Exclusive Left Turn Lane per direction <sup>6</sup>	1	1	2	0
Shared - Left Turn & Thru Lane <sup>6</sup>	0	0	0	0
Exclusive Thru Lane <sup>6</sup>	2	1	0	1
Shared - Right Turn & Thru Lane <sup>6</sup>	1	1	1	0
Exclusive Right Turn Lane <sup>6</sup>	0	0	0	1
Shared – Left turn / thru / right turn lane <sup>6</sup>	0	0	0	0
Free Right Turn Lane <sup>6</sup>	0	0	0	0
Right Turn Lane Length <sup>7</sup> (ft. behind stop bar)	124	N/A	177	97
Right Turn Lane - Taper Length <sup>7</sup> (ft)	144	N/A	63	83
Left Turn Lane Length <sup>7</sup> (ft. behind stop bar)	198	334	N/A	84
Left Turn Lane - Taper Length <sup>7</sup> (ft.)	118	120	N/A	71
Offset Left Turn Lane <sup>8</sup>	2	2	2	2
Are chevrons properly oriented? <sup>9</sup>	3	3	3	3
Channelization <sup>10</sup>	3	3	3	3
Exclusive Left Turn Lane Signalization <sup>11</sup>	3	3	3	3
Shared turn & thru lane/Exclusive Thru Lane Signalization <sup>11</sup>	1	1	1	1
Exclusive Right Turn Lane Signalization <sup>11</sup>	0	0	0	1

**Intersection 57: Madrona Ave. SE at Peck Ave. SE, Salem (Marion County)**



**Aerial Photo**



**Street View**

**Figure F.7: Photos for Intersection #57**

**Table F.13: Location and Geometric Configuration – Intersection #57**

Location	Latitude: 44.904976		Longitude: -123.034150	
Milepost	--			
Int. Type <sup>1</sup>	1			
ODOT Region	Region 2			
Road 1 Name	Madrona Ave. SE		Road 2 Name	Peck Ave. SE
No. of lanes <sup>2</sup>	2 (1,1)		No. of lanes <sup>2</sup>	2 (1,1)
Road No.	--		Road No.	--
<b>Description</b>	<b>Road 1</b>		<b>Road 2</b>	
Direction (NB, SB, WB, EB)	WB	EB	NB	SB
Speed Limit (mph)	25	25	--	--
Road Width <sup>3</sup> (Face-face, ft)	31	28	20	20
Road Width at Int. <sup>3</sup> (Face-face at stop bar, ft)	38	40	40	36
Closest Int. Upstream <sup>4</sup> (ft. behind stop bar)	800	882	268	842
Closest Int. Downstream <sup>4</sup> (ft. behind stop bar)	941	862	922	334
1 <sup>st</sup> & 2 <sup>nd</sup> Closest Dwy. to Int. (ft. behind stop bar)	166	316	71	97
Dwy. Location	2	2	1	1
Dwy. Type	5	5	1	1
Median Type	1	1	1	1
On-Street Parking	4	4	4	4
On-Street Parking Location (ends ft. behind stop bar)	N/A	N/A	N/A	N/A
Bike Lane	4	4	4	4
Bus Stop Near Int.	3	1	3	3
Bus Stops Location (ft. behind stop bar)	N/A	8.91	N/A	N/A
Traffic Control Device <sup>5</sup>	1	1	1	1
Signs on Traffic Light Pole/Span wire	0	15	0	0
Pedestrian Crossing Light	1	1	1	1

**Table F.14: Lane Geometry – Intersection #57**

Description	Road 1		Road 2	
Exclusive Left Turn Lane per direction <sup>6</sup>	0	0	0	0
Shared - Left Turn & Thru Lane <sup>6</sup>	0	0	0	0
Exclusive Thru Lane <sup>6</sup>	0	0	0	0
Shared - Right Turn & Thru Lane <sup>6</sup>	0	0	0	0
Exclusive Right Turn Lane <sup>6</sup>	0	0	0	0
Shared – Left turn / thru / right turn lane <sup>6</sup>	1	1	1	1
Free Right Turn Lane <sup>6</sup>	0	0	0	0
Right Turn Lane Length <sup>7</sup> (ft. behind stop bar)	N/A	N/A	N/A	N/A
Right Turn Lane - Taper Length <sup>7</sup> (ft)	N/A	N/A	N/A	N/A
Left Turn Lane Length <sup>7</sup> (ft. behind stop bar)	N/A	N/A	N/A	N/A
Left Turn Lane - Taper Length <sup>7</sup> (ft.)	N/A	N/A	N/A	N/A
Offset Left Turn Lane <sup>8</sup>	3	3	3	3
Are chevrons properly oriented? <sup>9</sup>	3	3	3	3
Channelization <sup>10</sup>	3	3	3	3
Exclusive Left Turn Lane Signalization <sup>11</sup>	0	0	0	0
Shared turn & thru lane/Exclusive Thru Lane Signalization <sup>11</sup>	1	1	1	1
Exclusive Right Turn Lane Signalization <sup>11</sup>	0	0	0	0

**Intersection 58: Portland Rd. NE (OR 99E) at Brooklake Rd NE, Brooks (Marion County)**



**Aerial Photo**



**Street View**

**Figure F.8: Photos for Intersection #58**

**Table F.15: Location and Geometric Configuration – Intersection #58**

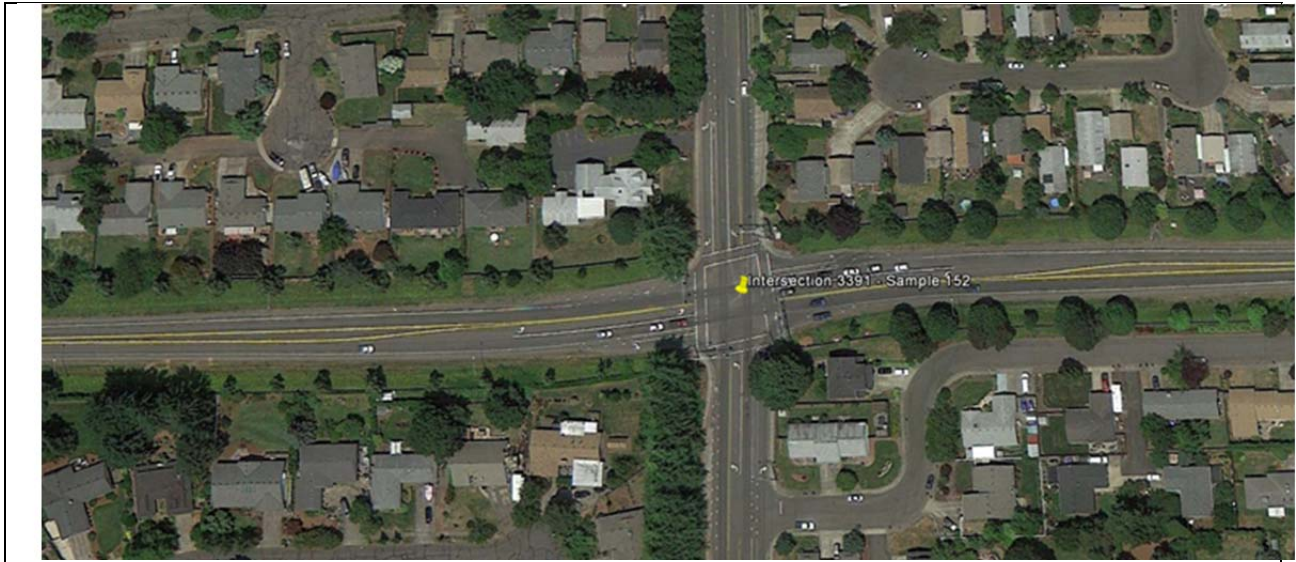
Location	Latitude: 45.046901		Longitude: -122.955197					
Milepost	41.24							
Int. Type <sup>1</sup>	1							
ODOT Region	Region 2							
Road 1 Name	Portland Rd. NE		Road 2 Name	Brooklake Rd. NE				
No. of lanes <sup>2</sup>	2 (1,1)		No. of lanes <sup>2</sup>	WB: 2 (1,1), EB: 3 (1,1,TWLTL)				
Road No.	OR 99E		Road No.	--				
<b>Description</b>	<b>Road 1</b>			<b>Road 2</b>				
Direction (NB, SB, WB, EB)	NB		SB	WB	EB			
Speed Limit (mph)	40		40	35	35			
Road Width <sup>3</sup> (Face-face, ft)	389		37	23	42			
Road Width at Int. <sup>3</sup> (Face-face at stop bar, ft)	65		70	52	74			
Closest Int. Upstream <sup>4</sup> (ft. behind stop bar)	2515		140	2828	1022			
Closest Int. Downstream <sup>4</sup> (ft. behind stop bar)	222		2603	335	2912			
1 <sup>st</sup> & 2 <sup>nd</sup> Closest Dwy. to Int. (ft. behind stop bar)	146	226	--	--	55	181	72	103
Dwy. Location	2	1	0	0	2	1	2	1
Dwy. Type	2	2	0	0	2	2	2	2
Median Type	1		1	1	1			
On-Street Parking	4		4	4	4			
On-Street Parking Location (ends ft. behind stop bar)	N/A		N/A	N/A	N/A			
Bike Lane	4		4	4	4			
Bus Stop Near Int.	3		3	3	3			
Bus Stops Location (ft. behind stop bar)	N/A		N/A	N/A	N/A			
Traffic Control Device <sup>5</sup>	2		2	2	2			
Signs on Traffic Light Pole/Span wire	0		2	0	0			
Pedestrian Crossing Light	1		1	1	1			

**Table F.16: Lane Geometry – Intersection #58**

<b>Description</b>	<b>Road 1</b>		<b>Road 2</b>	
Exclusive Left Turn Lane per direction <sup>6</sup>	1	1	0	0
Shared - Left Turn & Thru Lane <sup>6</sup>	0	0	0	0
Exclusive Thru Lane <sup>6</sup>	0	1	0	0
Shared - Right Turn & Thru Lane <sup>6</sup>	1	0	0	0
Exclusive Right Turn Lane <sup>6</sup>	0	1	0	0
Shared – Left turn / thru / right turn lane <sup>6</sup>	0	0	1	1
Free Right Turn Lane <sup>6</sup>	0	0	0	0
Right Turn Lane Length <sup>7</sup> (ft. behind stop bar)	N/A	90	N/A	N/A
Right Turn Lane - Taper Length <sup>7</sup> (ft)	N/A	N/A	N/A	N/A
Left Turn Lane Length <sup>7</sup> (ft. behind stop bar)	183	176	N/A	N/A
Left Turn Lane - Taper Length <sup>7</sup> (ft.)	144	118	N/A	N/A
Offset Left Turn Lane <sup>8</sup>	2	2	3	3
Are chevrons properly oriented? <sup>9</sup>	3	3	3	3
Channelization <sup>10</sup>	3	3	3	3
Exclusive Left Turn Lane Signalization <sup>11</sup>	5	5	0	0
Shared turn & thru lane/Exclusive Thru Lane Signalization <sup>11</sup>	1	1	1	1
Exclusive Right Turn Lane Signalization <sup>11</sup>	0	1	0	0



**Intersection 59: Liberty Rd. S at Kuebler Blvd., Salem (Marion County)**



**Aerial Photo**



**Street View**

**Figure F.9: Photos for Intersection #59**

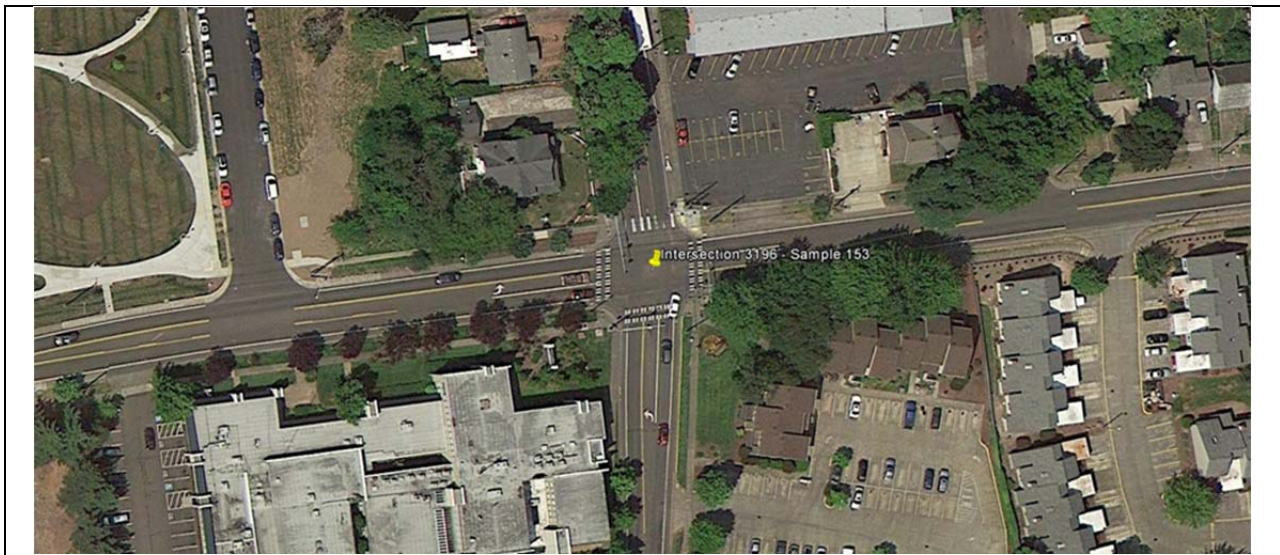
**Table F.17: Location and Geometric Configuration – Intersection #59**

Location	Latitude: 44.882861		Longitude: -123.061183	
Milepost	--			
Int. Type <sup>1</sup>	1			
ODOT Region	Region 2			
Road 1 Name	Liberty Rd. S		Road 2 Name	Kuebler Blvd.
No. of lanes <sup>2</sup>	3 (1,1,TWLTL)		No. of lanes <sup>2</sup>	2 (1,1)
Road No.	--		Road No.	--
Description	Road 1		Road 2	
Direction (NB, SB, WB, EB)	NB	SB	WB	EB
Speed Limit (mph)	35	35	45	45
Road Width <sup>3</sup> (Face-face, ft)	57	56	39	39
Road Width at Int. <sup>3</sup> (Face-face at stop bar, ft)	67	65	88	79
Closest Int. Upstream <sup>4</sup> (ft. behind stop bar)	144	295	2632	2206
Closest Int. Downstream <sup>4</sup> (ft. behind stop bar)	402	256	2288	2720
1 <sup>st</sup> & 2 <sup>nd</sup> Closest Dwy. to Int. (ft. behind stop bar)	--	116	--	--
Dwy. Location	0	1	0	0
Dwy. Type	0	2	0	0
Median Type	2	2/4	1	1
On-Street Parking	4	4	4	4
On-Street Parking Location (ends ft. behind stop bar)	N/A	N/A	N/A	N/A
Bike Lane	3	3	3	3
Bus Stop Near Int.	2*	3	3	3
Bus Stops Location (ft. behind stop bar)	1626	N/A	N/A	N/A
Traffic Control Device <sup>5</sup>	1	1	1	1
Signs on Traffic Light Pole/Span wire	11, 2	11, 2	11, 2	11, 2
Pedestrian Crossing Light	1	1	1	1

**Table F.18: Lane Geometry – Intersection #59**

Description	Road 1		Road 2	
Exclusive Left Turn Lane per direction <sup>6</sup>	1	1	1	1
Shared - Left Turn & Thru Lane <sup>6</sup>	0	0	0	0
Exclusive Thru Lane <sup>6</sup>	1	1	1	1
Shared - Right Turn & Thru Lane <sup>6</sup>	0	0	0	0
Exclusive Right Turn Lane <sup>6</sup>	1	1	1	1
Shared – Left turn / thru / right turn lane <sup>6</sup>	0	0	0	0
Free Right Turn Lane <sup>6</sup>	0	0	0	0
Right Turn Lane Length <sup>7</sup> (ft. behind stop bar)	4076	144	79	66
Right Turn Lane - Taper Length <sup>7</sup> (ft)	91	138	57	52
Left Turn Lane Length <sup>7</sup> (ft. behind stop bar)	126	167	192	189
Left Turn Lane - Taper Length <sup>7</sup> (ft.)	62	41	153	152
Offset Left Turn Lane <sup>8</sup>	2	2	2	2
Are chevrons properly oriented? <sup>9</sup>	3	3	3	3
Channelization <sup>10</sup>	3	3	3	3
Exclusive Left Turn Lane Signalization <sup>11</sup>	6	6	6	6
Shared turn & thru lane/Exclusive Thru Lane Signalization <sup>11</sup>	6	6	6	6
Exclusive Right Turn Lane Signalization <sup>11</sup>	5	5	5	5

**Intersection 60: SW 15th St. at SW Western Blvd., Corvallis (Benton County)**



**Aerial Photo**



**Street View**

**Figure F.10: Photos for Intersection #60**

**Table F.19: Location and Geometric Configuration – Intersection #60**

Location	Latitude: 44.559854		Longitude: -123.273990					
Milepost	--							
Int. Type <sup>1</sup>	1							
ODOT Region	Region 2							
Road 1 Name	SW 15 <sup>th</sup> St.		Road 2 Name	SW Western Blvd.				
No. of lanes <sup>2</sup>	2 (1,1)		No. of lanes <sup>2</sup>	WB: 2 (1,1), EB: 3 (1,1,TWLTL)				
Road No.	--		Road No.	--				
Description	Road 1				Road 2			
Direction (NB, SB, WB, EB)	NB		SB		WB		EB	
Speed Limit (mph)	25		25		30		30	
Road Width <sup>3</sup> (Face-face, ft)	31		30		35		40	
Road Width at Int. <sup>3</sup> (Face-face at stop bar, ft)	37		38		40		42	
Closest Int. Upstream <sup>4</sup> (ft. behind stop bar)	967		307		202		214	
Closest Int. Downstream <sup>4</sup> (ft. behind stop bar)	381		882		277		277	
1 <sup>st</sup> & 2 <sup>nd</sup> Closest Dwy. to Int. (ft. behind stop bar)	125	178	70	74	38	110	--	--
Dwy. Location	1	2	1	2	1	1	0	0
Dwy. Type	1	2	1	1	1	1	0	0
Median Type	7		1		1		2	
On-Street Parking	4		4		4		4	
On-Street Parking Location (ends ft. behind stop bar)	N/A		N/A		N/A		N/A	
Bike Lane	3		3		3		3	
Bus Stop Near Int.	3		2		3		3	
Bus Stops Location (ft. behind stop bar)	N/A		124		N/A		N/A	
Traffic Control Device <sup>5</sup>	1		1		1		1	
Signs on Traffic Light Pole/Span wire	0		0		0		0	
Pedestrian Crossing Light	1		1		1		1	

**Table F.20: Lane Geometry – Intersection #60**

Description	Road 1		Road 2	
Exclusive Left Turn Lane per direction <sup>6</sup>	1	1	1	1
Shared - Left Turn & Thru Lane <sup>6</sup>	0	0	0	0
Exclusive Thru Lane <sup>6</sup>	0	0	1	0
Shared - Right Turn & Thru Lane <sup>6</sup>	1	1	1	1
Exclusive Right Turn Lane <sup>6</sup>	0	0	0	0
Shared – Left turn / thru / right turn lane <sup>6</sup>	0	0	0	0
Free Right Turn Lane <sup>6</sup>	0	0	0	0
Right Turn Lane Length <sup>7</sup> (ft. behind stop bar)	N/A	N/A	N/A	N/A
Right Turn Lane - Taper Length <sup>7</sup> (ft)	N/A	N/A	N/A	N/A
Left Turn Lane Length <sup>7</sup> (ft. behind stop bar)	69	55	54	120
Left Turn Lane - Taper Length <sup>7</sup> (ft.)	75	86	85	570
Offset Left Turn Lane <sup>8</sup>	2	2	2	2
Are chevrons properly oriented? <sup>9</sup>	3	3	3	3
Channelization <sup>10</sup>	3	3	3	3
Exclusive Left Turn Lane Signalization <sup>11</sup>	3	3	3	3
Shared turn & thru lane/Exclusive Thru Lane Signalization <sup>11</sup>	1	1	1	1
Exclusive Right Turn Lane Signalization <sup>11</sup>	0	0	0	0

**Intersection 61: NW Walnut Blvd. at NW 29th St., Corvallis (Benton County)**



**Aerial Photo**



**Street View**

Figure F.11: Photos for Intersection #61

**Table F. 21: Location and Geometric Configuration – Intersection #61**

Location	Latitude: 44.593130		Longitude: -123.283370					
Milepost	--							
Int. Type <sup>1</sup>	1							
ODOT Region	Region 2							
Road 1 Name	NW Walnut Blvd.		Road 2 Name	NW 29 <sup>th</sup> St.				
No. of lanes <sup>2</sup>	4 (2,2)		No. of lanes <sup>2</sup>	2 (1,1)				
Road No.	--		Road No.	--				
<b>Description</b>	<b>Road 1</b>		<b>Road 2</b>					
Direction (NB, SB, WB, EB)	WB	EB	NB	SB				
Speed Limit (mph)	35	35	25	25				
Road Width <sup>3</sup> (Face-face, ft)	56	54	38	38				
Road Width at Int. <sup>3</sup> (Face-face at stop bar, ft)	69	70	41	41				
Closest Int. Upstream <sup>4</sup> (ft. behind stop bar)	748	2717	259	1734				
Closest Int. Downstream <sup>4</sup> (ft. behind stop bar)	2780	814	1841	347				
1 <sup>st</sup> & 2 <sup>nd</sup> Closest Dwy. to Int. (ft. behind stop bar)	434	--	250	401	24	33	740	804
Dwy. Location	1	0	1	1	2	1	2	1
Dwy. Type	2	0	1	1	1	1	2	1
Median Type	1		1		1		1/7	
On-Street Parking	4		4		4		2	
On-Street Parking Location (ends ft. behind stop bar)	N/A		N/A		N/A		413	
Bike Lane	3		3		3		3	
Bus Stop Near Int.	2		1		3		2	
Bus Stops Location (ft. behind stop bar)	142		522		N/A		460	
Traffic Control Device <sup>5</sup>	1		1		1		1	
Signs on Traffic Light Pole/Span wire	6		6		6		6	
Pedestrian Crossing Light	1		1		1		1	



**Table F.22: Lane Geometry – Intersection #61**

Description	Road 1		Road 2	
Exclusive Left Turn Lane per direction <sup>6</sup>	1	1	1	1
Shared - Left Turn & Thru Lane <sup>6</sup>	0	0	0	0
Exclusive Thru Lane <sup>6</sup>	1	1	0	0
Shared - Right Turn & Thru Lane <sup>6</sup>	1	1	1	1
Exclusive Right Turn Lane <sup>6</sup>	0	0	0	0
Shared – Left turn / thru / right turn lane <sup>6</sup>	0	0	0	0
Free Right Turn Lane <sup>6</sup>	0	0	0	0
Right Turn Lane Length <sup>7</sup> (ft. behind stop bar)	N/A	N/A	N/A	N/A
Right Turn Lane - Taper Length <sup>7</sup> (ft)	N/A	N/A	N/A	N/A
Left Turn Lane Length <sup>7</sup> (ft. behind stop bar)	102	122	73	253
Left Turn Lane - Taper Length <sup>7</sup> (ft.)	84	76	45	51
Offset Left Turn Lane <sup>8</sup>	2	2	2	2
Are chevrons properly oriented? <sup>9</sup>	3	3	3	3
Channelization <sup>10</sup>	3	3	3	3
Exclusive Left Turn Lane Signalization <sup>11</sup>	4	4	4	4
Shared turn & thru lane/Exclusive Thru Lane Signalization <sup>11</sup>	1	1	1	1
Exclusive Right Turn Lane Signalization <sup>11</sup>	0	0	0	0

**Intersection 62: Kuebler Blvd. at 27th Ave. SE, Salem (Marion County)**



**Aerial Photo**



**Street View**

Figure F.12: Photos for Intersection #62

**Table F.23: Location and Geometric Configuration – Intersection #62**

Location	Latitude: 44.885433		Longitude: -123.005186	
Milepost	--			
Int. Type <sup>1</sup>	1			
ODOT Region	Region 2			
Road 1 Name	Kuebler Blvd.		Road 2 Name	27 <sup>th</sup> Ave. SE
No. of lanes <sup>2</sup>	WB: 3 (2,1), EB: 3 (1,2)		No. of lanes <sup>2</sup>	2 (1,1)
Road No.	--		Road No.	--
Description	Road 1		Road 2	
Direction (NB, SB, WB, EB)	WB	EB	NB	SB
Speed Limit (mph)	45	45	35	35
Road Width <sup>3</sup> (Face-face, ft)	59	52	28	32
Road Width at Int. <sup>3</sup> (Face-face at stop bar, ft)	71	74	65	60
Closest Int. Upstream <sup>4</sup> (ft. behind stop bar)	1344	1859	1257	1286
Closest Int. Downstream <sup>4</sup> (ft. behind stop bar)	1956	1439	1388	1360
1 <sup>st</sup> & 2 <sup>nd</sup> Closest Dwy. to Int. (ft. behind stop bar)	--	--	256	778
Dwy. Location	0	0	2	1
Dwy. Type	0	0	5	5
Median Type	1	1	1	1/6
On-Street Parking	4	4	4	4
On-Street Parking Location (ends ft. behind stop bar)	N/A	N/A	N/A	N/A
Bike Lane	3	3	4	4
Bus Stop Near Int.	3	3	3	3
Bus Stops Location (ft. behind stop bar)	N/A	N/A	N/A	N/A
Traffic Control Device <sup>5</sup>	1	1	1	1
Signs on Traffic Light Pole/Span wire	0	0	0	0
Pedestrian Crossing Light	1	1	1	1

**Table F.24: Lane Geometry – Intersection #62**

Description	Road 1		Road 2	
Exclusive Left Turn Lane per direction <sup>6</sup>	1	1	1	1
Shared - Left Turn & Thru Lane <sup>6</sup>	0	0	0	0
Exclusive Thru Lane <sup>6</sup>	1	0	0	0
Shared - Right Turn & Thru Lane <sup>6</sup>	1	1	1	1
Exclusive Right Turn Lane <sup>6</sup>	0	0	0	0
Shared – Left turn / thru / right turn lane <sup>6</sup>	0	0	0	0
Free Right Turn Lane <sup>6</sup>	0	0	0	0
Right Turn Lane Length <sup>7</sup> (ft. behind stop bar)	N/A	N/A	N/A	N/A
Right Turn Lane - Taper Length <sup>7</sup> (ft)	N/A	N/A	N/A	N/A
Left Turn Lane Length <sup>7</sup> (ft. behind stop bar)	352	254	125	97
Left Turn Lane - Taper Length <sup>7</sup> (ft.)	110	1112	96	101
Offset Left Turn Lane <sup>8</sup>	2	2	2	2
Are chevrons properly oriented? <sup>9</sup>	3	3	3	3
Channelization <sup>10</sup>	3	3	3	3
Exclusive Left Turn Lane Signalization <sup>11</sup>	3	3	6	6
Shared turn & thru lane/Exclusive Thru Lane Signalization <sup>11</sup>	1	1	1	1
Exclusive Right Turn Lane Signalization <sup>11</sup>	0	0	0	0

**Intersection 63: River Rd. at River Ave. / Silver Ln., Eugene (Lane County)**



**Aerial Photo**



**Street View**

Figure F.13: Photos for Intersection #63

**Table F.25: Location and Geometric Configuration – Intersection #63**

Location	Latitude: 44.095518		Longitude: -123.127989	
Milepost	--			
Int. Type <sup>1</sup>	1			
ODOT Region	Region 2			
Road 1 Name	River Rd.		Road 2 Name	River Ave. / Silver Ln.
No. of lanes <sup>2</sup>	NB: 5 (2,2,TWLTL), SB: 5 (2,3)		No. of lanes <sup>2</sup>	3 (1,1,TWLTL)
Road No.	--		Road No.	--
Description	Road 1		Road 2	
Direction (NB, SB, WB, EB)	NB		WB	
Speed Limit (mph)	35		35	
Road Width <sup>3</sup> (Face-face, ft)	68		42	
Road Width at Int. <sup>3</sup> (Face-face at stop bar, ft)	81		69	
Closest Int. Upstream <sup>4</sup> (ft. behind stop bar)	798		1139	
Closest Int. Downstream <sup>4</sup> (ft. behind stop bar)	354		688	
1 <sup>st</sup> & 2 <sup>nd</sup> Closest Dwy. to Int. (ft. behind stop bar)	14	140	--	124
Dwy. Location	2	1	0	1
Dwy. Type	2	2	0	2
Median Type	2		2	
On-Street Parking	4		4	
On-Street Parking Location (ends ft. behind stop bar)	N/A		N/A	
Bike Lane	3		3	
Bus Stop Near Int.	2		2	
Bus Stops Location (ft. behind stop bar)	283		187	
Traffic Control Device <sup>5</sup>	1		1	
Signs on Traffic Light Pole/Span wire	0		2	
Pedestrian Crossing Light	1		1	

**Table F. 26: Lane Geometry – Intersection #63**

Description	Road 1		Road 2	
Exclusive Left Turn Lane per direction <sup>6</sup>	1	1	1	1
Shared - Left Turn & Thru Lane <sup>6</sup>	0	0	0	0
Exclusive Thru Lane <sup>6</sup>	1	1	1	0
Shared - Right Turn & Thru Lane <sup>6</sup>	1	1	0	1
Exclusive Right Turn Lane <sup>6</sup>	0	0	1	0
Shared – Left turn / thru / right turn lane <sup>6</sup>	0	0	0	0
Free Right Turn Lane <sup>6</sup>	0	0	0	0
Right Turn Lane Length <sup>7</sup> (ft. behind stop bar)	N/A	N/A	128	N/A
Right Turn Lane - Taper Length <sup>7</sup> (ft)	N/A	N/A	68	N/A
Left Turn Lane Length <sup>7</sup> (ft. behind stop bar)	149	108	120	149
Left Turn Lane - Taper Length <sup>7</sup> (ft.)	63	110	95	95
Offset Left Turn Lane <sup>8</sup>	2	2	2	2
Are chevrons properly oriented? <sup>9</sup>	3	3	3	3
Channelization <sup>10</sup>	3	3	3	3
Exclusive Left Turn Lane Signalization <sup>11</sup>	1	5	5	5
Shared turn & thru lane/Exclusive Thru Lane Signalization <sup>11</sup>	1	1	1	1
Exclusive Right Turn Lane Signalization <sup>11</sup>	0	0	0	0

## REGION 3 SITES FOR VALIDATION

### Intersection 64: NW 6th St. (OR 99) at NE D St., Grants Pass (Josephine County)



**Aerial Photo**



**Street View**

Figure F.14: Photos for Intersection #64



**Table F.27: Location and Geometric Configuration – Intersection #64**

Location	Latitude: 42.441438		Longitude: -123.325676			
Milepost	-0.99					
Int. Type <sup>1</sup>	1					
ODOT Region	Region 3					
Road 1 Name	NW 6 <sup>th</sup> St.	Road 2 Name	NE D St.			
No. of lanes <sup>2</sup>	3	No. of lanes <sup>2</sup>	2 (1,1)			
Road No.	OR 99	Road No.	--			
<b>Description</b>	<b>Road 1 (One Way)</b>		<b>Road 2</b>			
Direction (NB, SB, WB, EB)	SB		WB	EB		
Speed Limit (mph)	25		25	25		
Road Width <sup>3</sup> (Face-face, ft)	56		35	34		
Road Width at Int. <sup>3</sup> (Face-face at stop bar, ft)	56		35	35		
Closest Int. Upstream <sup>4</sup> (ft. behind stop bar)	223		305	306		
Closest Int. Downstream <sup>4</sup> (ft. behind stop bar)	280		389	379		
1 <sup>st</sup> & 2 <sup>nd</sup> Closest Dwy. to Int. (ft. behind stop bar)	69	110	29	144	18	28
Dwy. Location	2	2	1	1	2	1
Dwy. Type	2	2	2	2	2	2
Median Type	6		7	6		
On-Street Parking	3		3	3		
On-Street Parking Location (ends ft. behind stop bar)	8/19		20/44	63		
Bike Lane	5		4	4		
Bus Stop Near Int.	3		3	3		
Bus Stops Location (ft. behind stop bar)	N/A		N/A	N/A		
Traffic Control Device <sup>5</sup>	1		1	1		
Signs on Traffic Light Pole/Span wire	0		13	13		
Pedestrian Crossing Light	1		1	1		

**Table F.28: Lane Geometry – Intersection #64**

Description	Road 1	Road 2	
Exclusive Left Turn Lane per direction <sup>6</sup>	0	0	0
Shared - Left Turn & Thru Lane <sup>6</sup>	1	1	0
Exclusive Thru Lane <sup>6</sup>	1	0	0
Shared - Right Turn & Thru Lane <sup>6</sup>	1	0	1
Exclusive Right Turn Lane <sup>6</sup>	0	0	0
Shared – Left turn / thru / right turn lane <sup>6</sup>	0	0	0
Free Right Turn Lane <sup>6</sup>	0	0	0
Right Turn Lane Length <sup>7</sup> (ft. behind stop bar)	N/A	N/A	N/A
Right Turn Lane - Taper Length <sup>7</sup> (ft)	N/A	N/A	N/A
Left Turn Lane Length <sup>7</sup> (ft. behind stop bar)	N/A	N/A	N/A
Left Turn Lane - Taper Length <sup>7</sup> (ft.)	N/A	N/A	N/A
Offset Left Turn Lane <sup>8</sup>	3	3	3
Are chevrons properly oriented? <sup>9</sup>	3	3	3
Channelization <sup>10</sup>	3	3	3
Exclusive Left Turn Lane Signalization <sup>11</sup>	0	0	0
Shared turn & thru lane/Exclusive Thru Lane Signalization <sup>11</sup>	1	1	1
Exclusive Right Turn Lane Signalization <sup>11</sup>	0	0	0

**Intersection 65: S Central Ave. (OR 99) at E 8th St., Medford (Jackson County)**



**Aerial Photo**



**Street View**

**Figure F.15: Photos for Intersection #65**

**Table F.29: Location and Geometric Configuration – Intersection #65**

Location	Latitude: 42.325716		Longitude: -122.871438	
Milepost	--			
Int. Type <sup>1</sup>	1			
ODOT Region	Region 3			
Road 1 Name	S Central Ave.	Road 2 Name	E 8 <sup>th</sup> St.	
No. of lanes <sup>2</sup>	2	No. of lanes <sup>2</sup>	2	
Road No.	OR 99	Road No.	--	
<b>Description</b>	<b>Road 1 (One Way)</b>		<b>Road 2 (One Way)</b>	
Direction (NB, SB, WB, EB)	SB		EB	
Speed Limit (mph)	20		20	
Road Width <sup>3</sup> (Face-face, ft)	37		38	
Road Width at Int. <sup>3</sup> (Face-face at stop bar, ft)	22		23	
Closest Int. Upstream <sup>4</sup> (ft. behind stop bar)	298		219	
Closest Int. Downstream <sup>4</sup> (ft. behind stop bar)	366		277	
1 <sup>st</sup> & 2 <sup>nd</sup> Closest Dwy. to Int. (ft. behind stop bar)	148	148	105	112
Dwy. Location	1	2	1	2
Dwy. Type	5	5	2	5
Median Type	6		6	
On-Street Parking	3		3	
On-Street Parking Location (ends ft. behind stop bar)	17		18	
Bike Lane	5		5	
Bus Stop Near Int.	3		3	
Bus Stops Location (ft. behind stop bar)	N/A		N/A	
Traffic Control Device <sup>5</sup>	1		1	
Signs on Traffic Light Pole/Span wire	13		8	
Pedestrian Crossing Light	1		1	

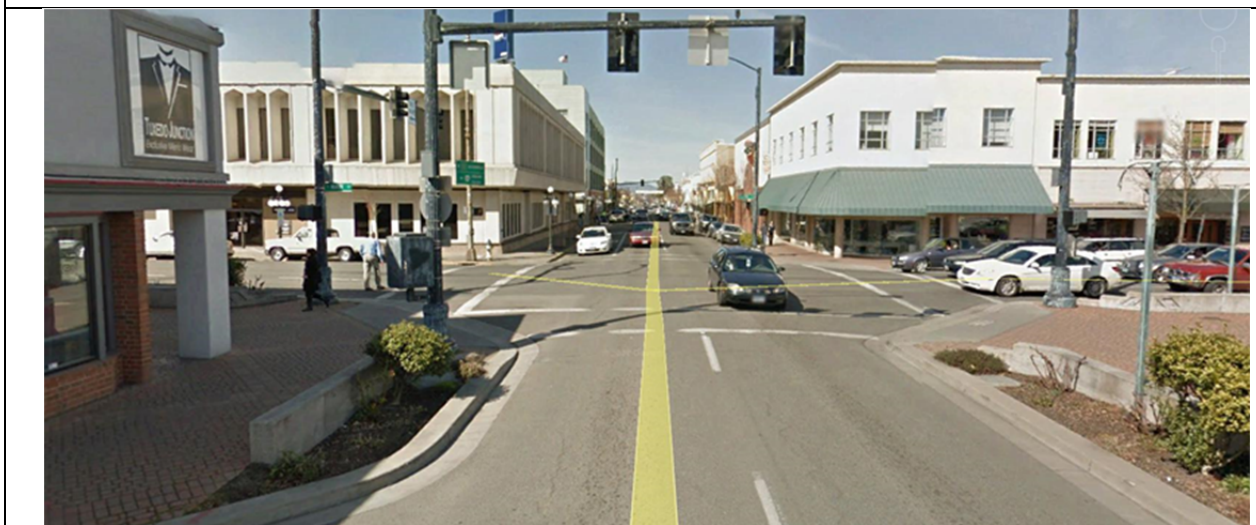
**Table F.30: Lane Geometry – Intersection #65**

<b>Description</b>	<b>Road 1 (One Way)</b>	<b>Road 2 (One Way)</b>
Exclusive Left Turn Lane per direction <sup>6</sup>	0	0
Shared - Left Turn & Thru Lane <sup>6</sup>	1	0
Exclusive Thru Lane <sup>6</sup>	1	1
Shared - Right Turn & Thru Lane <sup>6</sup>	0	1
Exclusive Right Turn Lane <sup>6</sup>	0	0
Shared – Left turn / thru / right turn lane <sup>6</sup>	0	0
Free Right Turn Lane <sup>6</sup>	0	0
Right Turn Lane Length <sup>7</sup> (ft. behind stop bar)	N/A	N/A
Right Turn Lane - Taper Length <sup>7</sup> (ft)	N/A	N/A
Left Turn Lane Length <sup>7</sup> (ft. behind stop bar)	N/A	N/A
Left Turn Lane - Taper Length <sup>7</sup> (ft.)	N/A	N/A
Offset Left Turn Lane <sup>8</sup>	3	3
Are chevrons properly oriented? <sup>9</sup>	3	3
Channelization <sup>10</sup>	3	3
Exclusive Left Turn Lane Signalization <sup>11</sup>	0	0
Shared turn & thru lane/Exclusive Thru Lane Signalization <sup>11</sup>	1	1
Exclusive Right Turn Lane Signalization <sup>11</sup>	0	0

**Intersection 66: S Central Ave. (OR 99) at E Main St., Medford (Jackson County)**



**Aerial Photo**



**Street View**

**Figure F.16: Photos for Intersection #66**

**Table F.31: Location and Geometric Configuration – Intersection #66**

Location	Latitude: 42.326550		Longitude: -122.872231	
Milepost	--			
Int. Type <sup>1</sup>	1			
ODOT Region	Region 3			
Road 1 Name	S Central Ave.	Road 2 Name	E Main St.	
No. of lanes <sup>2</sup>	2	No. of lanes <sup>2</sup>	3	
Road No.	OR 99	Road No.	--	
<b>Description</b>	<b>Road 1 (One Way)</b>		<b>Road 2 (One Way)</b>	
Direction (NB, SB, WB, EB)	SB		WB	
Speed Limit (mph)	20		20	
Road Width <sup>3</sup> (Face-face, ft)	360		530	
Road Width at Int. <sup>3</sup> (Face-face at stop bar, ft)	30		35	
Closest Int. Upstream <sup>4</sup> (ft. behind stop bar)	303		219	
Closest Int. Downstream <sup>4</sup> (ft. behind stop bar)	376		282	
1 <sup>st</sup> & 2 <sup>nd</sup> Closest Dwy. to Int. (ft. behind stop bar)	153	156	--	--
Dwy. Location	1	2	0	0
Dwy. Type	5	5	0	0
Median Type	6		6	
On-Street Parking	3		3	
On-Street Parking Location (ends ft. behind stop bar)	39/174		51/29	
Bike Lane	5		5	
Bus Stop Near Int.	3		3	
Bus Stops Location (ft. behind stop bar)	N/A		N/A	
Traffic Control Device <sup>5</sup>	1		1	
Signs on Traffic Light Pole/Span wire	13, 2		13	
Pedestrian Crossing Light	1		1	

**Table F.32: Lane Geometry – Intersection #66**

Description	Road 1 (One Way)	Road 2 (One Way)
Exclusive Left Turn Lane per direction <sup>6</sup>	0	0
Shared - Left Turn & Thru Lane <sup>6</sup>	0	1
Exclusive Thru Lane <sup>6</sup>	2	2
Shared - Right Turn & Thru Lane <sup>6</sup>	0	0
Exclusive Right Turn Lane <sup>6</sup>	1	0
Shared – Left turn / thru / right turn lane <sup>6</sup>	0	0
Free Right Turn Lane <sup>6</sup>	0	0
Right Turn Lane Length <sup>7</sup> (ft. behind stop bar)	89	N/A
Right Turn Lane - Taper Length <sup>7</sup> (ft)	N/A	N/A
Left Turn Lane Length <sup>7</sup> (ft. behind stop bar)	N/A	N/A
Left Turn Lane - Taper Length <sup>7</sup> (ft.)	N/A	N/A
Offset Left Turn Lane <sup>8</sup>	3	3
Are chevrons properly oriented? <sup>9</sup>	3	3
Channelization <sup>10</sup>	3	3
Exclusive Left Turn Lane Signalization <sup>11</sup>	0	0
Shared turn & thru lane/Exclusive Thru Lane Signalization <sup>11</sup>	2	2
Exclusive Right Turn Lane Signalization <sup>11</sup>	0	0

Time restricted parking from 7 a.m. to 6 p.m. (Roads 1 & 2)



**Intersection 67: Redwood Hwy. (US 199) at NE F St., Grants Pass (Josephine County)**



**Aerial Photo**



**Street View**

**Figure F.17: Photos for Intersection #67**

**Table F.33: Location and Geometric Configuration – Intersection #67**

Location	Latitude: 42.436856		Longitude: -123.310182	
Milepost	0.87			
Int. Type <sup>1</sup>	1			
ODOT Region	Region 3			
Road 1 Name	Redwood Hwy.	Road 2 Name	NE F St.	
No. of lanes <sup>2</sup>	4 (2,2)	No. of lanes <sup>2</sup>	WB: 3 (1,1,TWLTL), EB: 4 (2,2)	
Road No.	US 199	Road No.	--	
Description	Road 1		Road 2	
Direction (NB, SB, WB, EB)	NB	SB	WB	EB
Speed Limit (mph)	45	45	35	35
Road Width <sup>3</sup> (Face-face, ft)	65	79	46	76
Road Width at Int. <sup>3</sup> (Face-face at stop bar, ft)	98	89	65	98
Closest Int. Upstream <sup>4</sup> (ft. behind stop bar)	3133	581	1046	715
Closest Int. Downstream <sup>4</sup> (ft. behind stop bar)	705	3259	830	1166
1 <sup>st</sup> & 2 <sup>nd</sup> Closest Dwy. to Int. (ft. behind stop bar)	--	--	450	453
Dwy. Location	0	0	1	2
Dwy. Type	0	0	2	2
Median Type	1/4	4	2	4
On-Street Parking	4	4	4	4
On-Street Parking Location (ends ft. behind stop bar)	N/A	N/A	N/A	N/A
Bike Lane	3	3	3	3
Bus Stop Near Int.	3	3	1	3
Bus Stops Location (ft. behind stop bar)	N/A	N/A	395	N/A
Traffic Control Device <sup>5</sup>	1	1	1	1
Signs on Traffic Light Pole/Span wire	0	2	0	4
Pedestrian Crossing Light	1	1	2	1

**Table F.34: Lane Geometry – Intersection #67**

Description	Road 1		Road 2	
Exclusive Left Turn Lane per direction <sup>6</sup>	1	1	1	2
Shared - Left Turn & Thru Lane <sup>6</sup>	0	0	0	0
Exclusive Thru Lane <sup>6</sup>	1	2	0	0
Shared - Right Turn & Thru Lane <sup>6</sup>	1	0	1	1
Exclusive Right Turn Lane <sup>6</sup>	0	1	0	0
Shared – Left turn / thru / right turn lane <sup>6</sup>	0	0	0	0
Free Right Turn Lane <sup>6</sup>	0	0	0	0
Right Turn Lane Length <sup>7</sup> (ft. behind stop bar)	N/A	281	N/A	259
Right Turn Lane - Taper Length <sup>7</sup> (ft)	N/A	87	N/A	129
Left Turn Lane Length <sup>7</sup> (ft. behind stop bar)	212	190	145	258
Left Turn Lane - Taper Length <sup>7</sup> (ft.)	131	70	94	N/A
Offset Left Turn Lane <sup>8</sup>	2	2	2	2
Are chevrons properly oriented? <sup>9</sup>	3	3	3	3
Channelization <sup>10</sup>	3	3	3	3
Exclusive Left Turn Lane Signalization <sup>11</sup>	3	3	3	3
Shared turn & thru lane/Exclusive Thru Lane Signalization <sup>11</sup>	1	1	1	1
Exclusive Right Turn Lane Signalization <sup>11</sup>	0	3	0	0

**Intersection 68: Black Oak Dr. at Siskiyou Blvd., Medford (Jackson County)**



**Aerial Photo**



**Street View**

Figure F.18: Photos for Intersection #68

**Table F.35: Location and Geometric Configuration – Intersection #68**

Location	Latitude: 42.319650		Longitude: -122.835669	
Milepost	--			
Int. Type <sup>1</sup>	1			
ODOT Region	Region 3			
Road 1 Name	Black Oak Dr.		Road 2 Name	Siskiyou Blvd.
No. of lanes <sup>2</sup>	2 (1,1)		No. of lanes <sup>2</sup>	2 (1,1)
Road No.	--		Road No.	--
<b>Description</b>	<b>Road 1</b>		<b>Road 2</b>	
Direction (NB, SB, WB, EB)	NB SB		WB EB	
Speed Limit (mph)	25		30	
Road Width <sup>3</sup> (Face-face, ft)	42		42	
Road Width at Int. <sup>3</sup> (Face-face at stop bar, ft)	45		43	
Closest Int. Upstream <sup>4</sup> (ft. behind stop bar)	196		358	
Closest Int. Downstream <sup>4</sup> (ft. behind stop bar)	227		915	
1 <sup>st</sup> & 2 <sup>nd</sup> Closest Dwy. to Int. (ft. behind stop bar)	81	--	68	--
Dwy. Location	2	0	2	0
Dwy. Type	1	0	1	0
Median Type	1		1	
On-Street Parking	4		4	
On-Street Parking Location (ends ft. behind stop bar)	N/A		N/A	
Bike Lane	3		3	
Bus Stop Near Int.	1		3	
Bus Stops Location (ft. behind stop bar)	242		N/A	
Traffic Control Device <sup>5</sup>	1		1	
Signs on Traffic Light Pole/Span wire	0		0	
Pedestrian Crossing Light	1		1	

**Table F.36: Lane Geometry – Intersection #68**

Description	Road 1		Road 2	
Exclusive Left Turn Lane per direction <sup>6</sup>	1	1	1	1
Shared - Left Turn & Thru Lane <sup>6</sup>	0	0	0	0
Exclusive Thru Lane <sup>6</sup>	0	0	0	0
Shared - Right Turn & Thru Lane <sup>6</sup>	1	1	1	1
Exclusive Right Turn Lane <sup>6</sup>	0	0	0	0
Shared – Left turn / thru / right turn lane <sup>6</sup>	0	0	0	0
Free Right Turn Lane <sup>6</sup>	0	0	0	0
Right Turn Lane Length <sup>7</sup> (ft. behind stop bar)	N/A	N/A	N/A	N/A
Right Turn Lane - Taper Length <sup>7</sup> (ft)	N/A	N/A	N/A	N/A
Left Turn Lane Length <sup>7</sup> (ft. behind stop bar)	92	95	96	93
Left Turn Lane - Taper Length <sup>7</sup> (ft.)	56	55	75	105
Offset Left Turn Lane <sup>8</sup>	2	2	2	2
Are chevrons properly oriented? <sup>9</sup>	3	3	3	3
Channelization <sup>10</sup>	3	3	3	3
Exclusive Left Turn Lane Signalization <sup>11</sup>	3	3	3	3
Shared turn & thru lane/Exclusive Thru Lane Signalization <sup>11</sup>	1	1	1	1
Exclusive Right Turn Lane Signalization <sup>11</sup>	0	0	0	0

**Intersection 69: Hamrick Rd. at E Pine St. / Biddle Rd., Central Point (Jackson County)**



**Aerial Photo**



**Street View**

**Figure F.19: Photos for Intersection #69**

**Table F.37: Location and Geometric Configuration – Intersection #69**

Location	Latitude: 42.378678		Longitude: -122.89295	
Milepost	--			
Int. Type <sup>1</sup>	1			
ODOT Region	Region 3			
Road 1 Name	Hamrick Rd.		Road 2 Name	E Pine St. / Biddle Rd.
No. of lanes <sup>2</sup>	NB: 2 (1,1), SB: 3 (1,1,TWLTL)		No. of lanes <sup>2</sup>	5 (2,2,TWLTL)
Road No.	--		Road No.	--
Description	Road 1		Road 2	
Direction (NB, SB, WB, EB)	NB		WB	
	SB		EB	
Speed Limit (mph)	40		45	
	40		35	
Road Width <sup>3</sup> (Face-face, ft)	46		68	
	50		71	
Road Width at Int. <sup>3</sup> (Face-face at stop bar, ft)	74		83	
	77		93	
Closest Int. Upstream <sup>4</sup> (ft. behind stop bar)	431		802	
	351		674	
Closest Int. Downstream <sup>4</sup> (ft. behind stop bar)	461		768	
	541		902	
1 <sup>st</sup> & 2 <sup>nd</sup> Closest Dwy. to Int. (ft. behind stop bar)	177	--	51	225
	--	--	--	--
Dwy. Location	2	0	2	2
	0	0	0	0
Dwy. Type	5	0	1	1
	0	0	0	0
Median Type	1		2	
	1		2	
On-Street Parking	4		4	
	4		4	
On-Street Parking Location (ends ft. behind stop bar)	N/A		N/A	
	N/A		N/A	
Bike Lane	3		3	
	3		3	
Bus Stop Near Int.	3		3	
	3		3	
Bus Stops Location (ft. behind stop bar)	N/A		N/A	
	N/A		N/A	
Traffic Control Device <sup>5</sup>	1		1	
	1		1	
Signs on Traffic Light Pole/Span wire	2		6	
	2		0	
Pedestrian Crossing Light	1		1	
	1		1	



**Table F.38: Lane Geometry – Intersection #69**

Description	Road 1		Road 2	
Exclusive Left Turn Lane per direction <sup>6</sup>	0	0	1	1
Shared - Left Turn & Thru Lane <sup>6</sup>	1	1	0	0
Exclusive Thru Lane <sup>6</sup>	0	0	1	1
Shared - Right Turn & Thru Lane <sup>6</sup>	0	0	1	1
Exclusive Right Turn Lane <sup>6</sup>	1	1	0	0
Shared – Left turn / thru / right turn lane <sup>6</sup>	0	0	0	0
Free Right Turn Lane <sup>6</sup>	0	0	0	0
Right Turn Lane Length <sup>7</sup> (ft. behind stop bar)	150	191	N/A	N/A
Right Turn Lane - Taper Length <sup>7</sup> (ft)	N/A	N/A	N/A	N/A
Left Turn Lane Length <sup>7</sup> (ft. behind stop bar)	N/A	191	307	386
Left Turn Lane - Taper Length <sup>7</sup> (ft.)	N/A	N/A	99	106
Offset Left Turn Lane <sup>8</sup>	2	2	2	2
Are chevrons properly oriented? <sup>9</sup>	3	3	3	3
Channelization <sup>10</sup>	3	3	3	3
Exclusive Left Turn Lane Signalization <sup>11</sup>	0	0	6	5
Shared turn & thru lane/Exclusive Thru Lane Signalization <sup>11</sup>	1	1	1	1
Exclusive Right Turn Lane Signalization <sup>11</sup>	1	1	0	0

**Intersection 70: Redwood Hwy. (US 199) at SW Allen Creek Rd., Grants Pass (Josephine County)**



**Aerial Photo**



**Street View**

**Figure F.20: Photos for Intersection #70**

**Table F.39: Location and Geometric Configuration – Intersection #70**

Location	Latitude: 42.421324		Longitude: -123.351589	
Milepost	1.24			
Int. Type <sup>1</sup>	1			
ODOT Region	Region 3			
Road 1 Name	Redwood Hwy.	Road 2 Name	SW Allen Creek Rd.	
No. of lanes <sup>2</sup>	4 (2,2)	No. of lanes <sup>2</sup>	NB: 4 (2,2), SB: 2 (1,1)	
Road No.	US 199	Road No.	--	
<b>Description</b>	<b>Road 1</b>		<b>Road 2</b>	
Direction (NB, SB, WB, EB)	WB	EB	NB	SB
Speed Limit (mph)	45	45	35	35
Road Width <sup>3</sup> (Face-face, ft)	83	82	753	23
Road Width at Int. <sup>3</sup> (Face-face at stop bar, ft)	103	103	92	64
Closest Int. Upstream <sup>4</sup> (ft. behind stop bar)	997	4140	466	304
Closest Int. Downstream <sup>4</sup> (ft. behind stop bar)	4242	1111	444	582
1 <sup>st</sup> & 2 <sup>nd</sup> Closest Dwy. to Int. (ft. behind stop bar)	--	--	142	222
Dwy. Location	0	0	1	1
Dwy. Type	0	0	5	1
Median Type	1*	1*	4	1
On-Street Parking	4	4	4	4
On-Street Parking Location (ends ft. behind stop bar)	N/A	N/A	N/A	N/A
Bike Lane	3	3	3	3
Bus Stop Near Int.	3	3	3	3
Bus Stops Location (ft. behind stop bar)	N/A	N/A	N/A	N/A
Traffic Control Device <sup>5</sup>	1	1	1	1
Signs on Traffic Light Pole/Span wire	2	2	0	0
Pedestrian Crossing Light	1	1	1	1

**Table F.40: Lane Geometry – Intersection #70**

Description	Road 1		Road 2	
Exclusive Left Turn Lane per direction <sup>6</sup>	1	1	2	1
Shared - Left Turn & Thru Lane <sup>6</sup>	0	0	0	0
Exclusive Thru Lane <sup>6</sup>	2	2	0	0
Shared - Right Turn & Thru Lane <sup>6</sup>	0	0	1	1
Exclusive Right Turn Lane <sup>6</sup>	1	1	0	0
Shared – Left turn / thru / right turn lane <sup>6</sup>	0	0	0	0
Free Right Turn Lane <sup>6</sup>	0	0	0	0
Right Turn Lane Length <sup>7</sup> (ft. behind stop bar)	184	312	N/A	N/A
Right Turn Lane - Taper Length <sup>7</sup> (ft)	204	116	N/A	N/A
Left Turn Lane Length <sup>7</sup> (ft. behind stop bar)	177	172	162	72
Left Turn Lane - Taper Length <sup>7</sup> (ft.)	138	127	63	47
Offset Left Turn Lane <sup>8</sup>	2	2	2	2
Are chevrons properly oriented? <sup>9</sup>	3	3	3	3
Channelization <sup>10</sup>	3	3	3	3
Exclusive Left Turn Lane Signalization <sup>11</sup>	3	3	3	3
Shared turn & thru lane/Exclusive Thru Lane Signalization <sup>11</sup>	1	1	1	1
Exclusive Right Turn Lane Signalization <sup>11</sup>	1	1	0	0

\*Painted median is 15.5 ft. wide

## REGION 4 SITES FOR VALIDATION

### Intersection 71: SW Glacier Ave. (OR 126) at W 9th St., Redmond (Deschutes County)



**Aerial Photo**



**Street View**

Figure F.21: Photos for Intersection #71

**Table F.41: Location and Geometric Configuration – Intersection #71**

Location	Latitude: 44.270578		Longitude: -121.177479	
Milepost	111.75			
Int. Type <sup>1</sup>	1			
ODOT Region	Region 4			
Road 1 Name	SW Glacier Ave.	Road 2 Name	SW 9 <sup>th</sup> St.	
No. of lanes <sup>2</sup>	2	No. of lanes <sup>2</sup>	3	
Road No.	OR 126	Road No.	--	
<b>Description</b>	<b>Road 1 (One Way)</b>		<b>Road 2 (One Way)</b>	
Direction (NB, SB, WB, EB)	WB		NB	
Speed Limit (mph)	25		--	
Road Width <sup>3</sup> (Face-face, ft)	35		40	
Road Width at Int. <sup>3</sup> (Face-face at stop bar, ft)	33		47	
Closest Int. Upstream <sup>4</sup> (ft. behind stop bar)	223		286	
Closest Int. Downstream <sup>4</sup> (ft. behind stop bar)	295		375	
1 <sup>st</sup> & 2 <sup>nd</sup> Closest Dwy. to Int. (ft. behind stop bar)	105	105	83	145
Dwy. Location	2	1	1	2
Dwy. Type	2	2	5	2
Median Type	6		6	
On-Street Parking	2		4	
On-Street Parking Location (ends ft. behind stop bar)	46		N/A	
Bike Lane	2		2	
Bus Stop Near Int.	3		3	
Bus Stops Location (ft. behind stop bar)	N/A		N/A	
Traffic Control Device <sup>5</sup>	1		1	
Signs on Traffic Light Pole/Span wire	13		13	
Pedestrian Crossing Light	1		1*	

**Table F.42: Lane Geometry – Intersection #71**

Description	Road 1 (One Way)	Road 2 (One Way)
Exclusive Left Turn Lane per direction <sup>6</sup>	0	1
Shared - Left Turn & Thru Lane <sup>6</sup>	0	1
Exclusive Thru Lane <sup>6</sup>	1	1
Shared - Right Turn & Thru Lane <sup>6</sup>	1	0
Exclusive Right Turn Lane <sup>6</sup>	0	0
Shared – Left turn / thru / right turn lane <sup>6</sup>	0	0
Free Right Turn Lane <sup>6</sup>	0	0
Right Turn Lane Length <sup>7</sup> (ft. behind stop bar)	N/A	N/A
Right Turn Lane - Taper Length <sup>7</sup> (ft)	N/A	N/A
Left Turn Lane Length <sup>7</sup> (ft. behind stop bar)	N/A	N/A
Left Turn Lane - Taper Length <sup>7</sup> (ft.)	N/A	N/A
Offset Left Turn Lane <sup>8</sup>	3	3
Are chevrons properly oriented? <sup>9</sup>	3	3
Channelization <sup>10</sup>	3	3
Exclusive Left Turn Lane Signalization <sup>11</sup>	0	1
Shared turn & thru lane/Exclusive Thru Lane Signalization <sup>11</sup>	1	1
Exclusive Right Turn Lane Signalization <sup>11</sup>	0	0

**\*Crosswalk closed – left side of NB approach**

**Intersection 72: Avalon St. at Shasta Way, Klamath Falls (Klamath County)**



**Aerial Photo**



**Street View**

Figure F.22: Photos for Intersection #72



**Table F.43: Location and Geometric Configuration – Intersection #72**

Location	Latitude: 42.213825		Longitude: -121.752314					
Milepost	--							
Int. Type <sup>1</sup>	1							
ODOT Region	Region 4							
Road 1 Name	Avalon St		Road 2 Name	Shasta Way				
No. of lanes <sup>2</sup>	NB: 3 (1,1,TWLTL), SB: 2 (1,1)		No. of lanes <sup>2</sup>	WB: 2 (1,1), EB: 3 (1,1,TWLTL)				
Road No.	--		Road No.	--				
<b>Description</b>	<b>Road 1</b>			<b>Road 2</b>				
Direction (NB, SB, WB, EB)	NB		SB	WB	EB			
Speed Limit (mph)	--		--	25	25			
Road Width <sup>3</sup> (Face-face, ft)	59		28	52	52			
Road Width at Int. <sup>3</sup> (Face-face at stop bar, ft)	59		32	53	55			
Closest Int. Upstream <sup>4</sup> (ft. behind stop bar)	407		891	295	1232			
Closest Int. Downstream <sup>4</sup> (ft. behind stop bar)	964		479	1305	516			
1 <sup>st</sup> & 2 <sup>nd</sup> Closest Dwy. to Int. (ft. behind stop bar)	125	140	117	161	162	220	207	474
Dwy. Location	2	1	2	2	1	1	1	1
Dwy. Type	2	2	1	1	1	1	2	2
Median Type	2		1	1	2			
On-Street Parking	4		4	4	4			
On-Street Parking Location (ends ft. behind stop bar)	N/A		N/A	N/A	N/A			
Bike Lane	3		4	3	3			
Bus Stop Near Int.	3		3	3	3			
Bus Stops Location (ft. behind stop bar)	N/A		N/A	N/A	N/A			
Traffic Control Device <sup>5</sup>	1		1	1	1			
Signs on Traffic Light Pole/Span wire	0		0	6	6			
Pedestrian Crossing Light	1		1	1	1			

**Table F.44: Lane Geometry – Intersection #72**

Description	Road 1		Road 2	
Exclusive Left Turn Lane per direction <sup>6</sup>	0	0	1	1
Shared - Left Turn & Thru Lane <sup>6</sup>	1	0	0	0
Exclusive Thru Lane <sup>6</sup>	0	0	0	0
Shared - Right Turn & Thru Lane <sup>6</sup>	0	0	1	1
Exclusive Right Turn Lane <sup>6</sup>	1	0	0	0
Shared – Left turn / thru / right turn lane <sup>6</sup>	0	1	0	0
Free Right Turn Lane <sup>6</sup>	0	0	0	0
Right Turn Lane Length <sup>7</sup> (ft. behind stop bar)	67	N/A	N/A	N/A
Right Turn Lane - Taper Length <sup>7</sup> (ft)	37	N/A	N/A	N/A
Left Turn Lane Length <sup>7</sup> (ft. behind stop bar)	N/A	N/A	105	105
Left Turn Lane - Taper Length <sup>7</sup> (ft.)	N/A	N/A	167	126
Offset Left Turn Lane <sup>8</sup>	3	3	2	2
Are chevrons properly oriented? <sup>9</sup>	3	3	3	3
Channelization <sup>10</sup>	3	3	3	3
Exclusive Left Turn Lane Signalization <sup>11</sup>	0	0	1	1
Shared turn & thru lane/Exclusive Thru Lane Signalization <sup>11</sup>	1	1	1	1
Exclusive Right Turn Lane Signalization <sup>11</sup>	1	0	0	0

**Intersection 73: Washington St. at E 3rd St., The Dalles (Wasco County)**



**Aerial Photo**



**Street View**

**Figure F.23: Photos for Intersection #73**

**Table F.45: Location and Geometric Configuration – Intersection #73**

Location	Latitude: 45.600674		Longitude: -121.182551			
Milepost	--					
Int. Type <sup>1</sup>	1					
ODOT Region	Region 4					
Road 1 Name	Washington St.		Road 2 Name	E 3 <sup>rd</sup> St.		
No. of lanes <sup>2</sup>	2 (1,1)		No. of lanes <sup>2</sup>	2 (1,1)		
Road No.	--		Road No.	--		
<b>Description</b>	<b>Road 1</b>				<b>Road 2 (One Way)</b>	
Direction (NB, SB, WB, EB)	NB		SB		EB	
Speed Limit (mph)	20		20		20	
Road Width <sup>3</sup> (Face-face, ft)	52		51		39	
Road Width at Int. <sup>3</sup> (Face-face at stop bar, ft)	52		51		39	
Closest Int. Upstream <sup>4</sup> (ft. behind stop bar)	224		217		290	
Closest Int. Downstream <sup>4</sup> (ft. behind stop bar)	278		283		377	
1 <sup>st</sup> & 2 <sup>nd</sup> Closest Dwy. to Int. (ft. behind stop bar)	110	110	111	111	106	-
Dwy. Location	1	2	1	2	1	0
Dwy. Type	2	2	5	5	2	0
Median Type	1		1		6	
On-Street Parking	3		3		3	
On-Street Parking Location (ends ft. behind stop bar)	7		13		5/16	
Bike Lane	4		4		4	
Bus Stop Near Int.	3		3		3	
Bus Stops Location (ft. behind stop bar)	N/A		N/A		N/A	
Traffic Control Device <sup>5</sup>	2		2		2	
Signs on Traffic Light Pole/Span wire	12		3		0	
Pedestrian Crossing Light	1		1		1	

**Table F.46: Lane Geometry – Intersection #73**

Description	Road 1		Road 2 (One Way)
Exclusive Left Turn Lane per direction <sup>6</sup>	0	1	0
Shared - Left Turn & Thru Lane <sup>6</sup>	0	0	1
Exclusive Thru Lane <sup>6</sup>	0	1	0
Shared - Right Turn & Thru Lane <sup>6</sup>	1	0	1
Exclusive Right Turn Lane <sup>6</sup>	0	0	0
Shared – Left turn / thru / right turn lane <sup>6</sup>	0	0	0
Free Right Turn Lane <sup>6</sup>	0	0	0
Right Turn Lane Length <sup>7</sup> (ft. behind stop bar)	N/A	N/A	N/A
Right Turn Lane - Taper Length <sup>7</sup> (ft)	N/A	N/A	N/A
Left Turn Lane Length <sup>7</sup> (ft. behind stop bar)	N/A	49	N/A
Left Turn Lane - Taper Length <sup>7</sup> (ft.)	N/A	N/A	N/A
Offset Left Turn Lane <sup>8</sup>	3	3	3
Are chevrons properly oriented? <sup>9</sup>	3	3	3
Channelization <sup>10</sup>	3	3	3
Exclusive Left Turn Lane Signalization <sup>11</sup>	0	3	0
Shared turn & thru lane/Exclusive Thru Lane Signalization <sup>11</sup>	2	2	2
Exclusive Right Turn Lane Signalization <sup>11</sup>	0	0	0

**Intersection 74: NW Colorado Ave. at NW Wall St., Bend (Deschutes County)**



**Aerial Photo**



**Street View**

Figure F.24: Photos for Intersection #74

**Table F.47: Location and Geometric Configuration – Intersection #74**

Location	Latitude: 44.052313		Longitude: -121.317639	
Milepost	--			
Int. Type <sup>1</sup>	1			
ODOT Region	Region 4			
Road 1 Name	NW Colorado Ave.	Road 2 Name	NW Wall St.	
No. of lanes <sup>2</sup>	2	No. of lanes <sup>2</sup>	2	
Road No.	--	Road No.	--	
<b>Description</b>	<b>Road 1 (One Way)</b>		<b>Road 2 (One Way)</b>	
Direction (NB, SB, WB, EB)	SB		WB	
Speed Limit (mph)	25		35	
Road Width <sup>3</sup> (Face-face, ft)	35		395	
Road Width at Int. <sup>3</sup> (Face-face at stop bar, ft)	40		33	
Closest Int. Upstream <sup>4</sup> (ft. behind stop bar)	255		237	
Closest Int. Downstream <sup>4</sup> (ft. behind stop bar)	296		310	
1 <sup>st</sup> & 2 <sup>nd</sup> Closest Dwy. to Int. (ft. behind stop bar)	117	121	141	177
Dwy. Location	1	2	2	2
Dwy. Type	2	1	5	1
Median Type	6		6	
On-Street Parking	1		1	
On-Street Parking Location (ends ft. behind stop bar)	45		51	
Bike Lane	2		2	
Bus Stop Near Int.	3		3	
Bus Stops Location (ft. behind stop bar)	N/A		N/A	
Traffic Control Device <sup>5</sup>	1		1	
Signs on Traffic Light Pole/Span wire	13		13	
Pedestrian Crossing Light	1		1	

**Table F.48: Lane Geometry – Intersection #74**

<b>Description</b>	<b>Road 1 (One Way)</b>	<b>Road 2 (One Way)</b>
Exclusive Left Turn Lane per direction <sup>6</sup>	0	0
Shared - Left Turn & Thru Lane <sup>6</sup>	0	1
Exclusive Thru Lane <sup>6</sup>	1	1
Shared - Right Turn & Thru Lane <sup>6</sup>	1	0
Exclusive Right Turn Lane <sup>6</sup>	0	0
Shared – Left turn / thru / right turn lane <sup>6</sup>	0	0
Free Right Turn Lane <sup>6</sup>	0	0
Right Turn Lane Length <sup>7</sup> (ft. behind stop bar)	N/A	N/A
Right Turn Lane - Taper Length <sup>7</sup> (ft)	N/A	N/A
Left Turn Lane Length <sup>7</sup> (ft. behind stop bar)	N/A	N/A
Left Turn Lane - Taper Length <sup>7</sup> (ft.)	N/A	N/A
Offset Left Turn Lane <sup>8</sup>	3	3
Are chevrons properly oriented? <sup>9</sup>	3	3
Channelization <sup>10</sup>	3	3
Exclusive Left Turn Lane Signalization <sup>11</sup>	0	0
Shared turn & thru lane/Exclusive Thru Lane Signalization <sup>11</sup>	2	1
Exclusive Right Turn Lane Signalization <sup>11</sup>	0	0



**Intersection 75: S 6th St. (OR 39) at Madison St., Klamath Falls (Klamath County)**



**Aerial Photo**



**Street View**

Figure F.25: Photos for Intersection #75

**Table F.49: Location and Geometric Configuration – Intersection #75**

Location	Latitude: 42.206509		Longitude: -121.717850	
Milepost	4.25			
Int. Type <sup>1</sup>	1			
ODOT Region	Region 4			
Road 1 Name	S 6 <sup>th</sup> St.		Road 2 Name	Madison St.
No. of lanes <sup>2</sup>	5 (2,2,TWLTL)		No. of lanes <sup>2</sup>	3 (1,1,TWLTL)
Road No.	OR 39		Road No.	--
<b>Description</b>	<b>Road 1</b>		<b>Road 2</b>	
Direction (NB, SB, WB, EB)	WB	EB	NB	SB
Speed Limit (mph)	35	35	30	35
Road Width <sup>3</sup> (Face-face, ft)	67	68	38	38
Road Width at Int. <sup>3</sup> (Face-face at stop bar, ft)	77	69	46	48
Closest Int. Upstream <sup>4</sup> (ft. behind stop bar)	407	390	806	424
Closest Int. Downstream <sup>4</sup> (ft. behind stop bar)	464	468	525	905
1 <sup>st</sup> & 2 <sup>nd</sup> Closest Dwy. to Int. (ft. behind stop bar)	100	179	40	97
Dwy. Location	1	2	2	1
Dwy. Type	2	2	2	2
Median Type	2	2	2	2
On-Street Parking	4	4	4	4*
On-Street Parking Location (ends ft. behind stop bar)	N/A	N/A	N/A	N/A
Bike Lane	4	4	4	4
Bus Stop Near Int.	2	3	3	3
Bus Stops Location (ft. behind stop bar)	218	N/A	N/A	N/A
Traffic Control Device <sup>5</sup>	1	1	1	1
Signs on Traffic Light Pole/Span wire	0	0	0	4
Pedestrian Crossing Light	1	1	1	1

**Table F.50: Lane Geometry – Intersection #75**

Description	Road 1		Road 2	
Exclusive Left Turn Lane per direction <sup>6</sup>	1	1	1	1
Shared - Left Turn & Thru Lane <sup>6</sup>	0	0	0	0
Exclusive Thru Lane <sup>6</sup>	1	1	0	0
Shared - Right Turn & Thru Lane <sup>6</sup>	1	1	1	1
Exclusive Right Turn Lane <sup>6</sup>	0	0	0	0
Shared – Left turn / thru / right turn lane <sup>6</sup>	0	0	0	0
Free Right Turn Lane <sup>6</sup>	0	0	0	0
Right Turn Lane Length <sup>7</sup> (ft. behind stop bar)	N/A	N/A	N/A	N/A
Right Turn Lane - Taper Length <sup>7</sup> (ft)	N/A	N/A	N/A	N/A
Left Turn Lane Length <sup>7</sup> (ft. behind stop bar)	104	99	100	135
Left Turn Lane - Taper Length <sup>7</sup> (ft.)	128	78	85	77
Offset Left Turn Lane <sup>8</sup>	2	2	2	2
Are chevrons properly oriented? <sup>9</sup>	3	3	3	3
Channelization <sup>10</sup>	3	3	3	3
Exclusive Left Turn Lane Signalization <sup>11</sup>	3	3	1	1
Shared turn & thru lane/Exclusive Thru Lane Signalization <sup>11</sup>	1	1	1	1
Exclusive Right Turn Lane Signalization <sup>11</sup>	0	0	0	0

\*Parking area on right side of SB road

**Intersection 76: NW Wall St. at NW Portland Ave. / NE Olney Ave., Bend (Deschutes County)**



**Aerial Photo**



**Street View**

Figure F.26: Photos for Intersection #76

**Table F.51: Location and Geometric Configuration – Intersection #76**

Location	Latitude: 44.064169		Longitude: -121.308932					
Milepost	--							
Int. Type <sup>1</sup>	1							
ODOT Region	Region 4							
Road 1 Name	NW Wall St.		Road 2 Name	NW Portland Ave. / NE Olney Ave.				
No. of lanes <sup>2</sup>	2 (1,1)		No. of lanes <sup>2</sup>	2 (1,1)				
Road No.	--		Road No.	--				
Description	Road 1		Road 2					
Direction (NB, SB, WB, EB)	NB	SB	WB	EB				
Speed Limit (mph)	--	--	25	25				
Road Width <sup>3</sup> (Face-face, ft)	53	62	48	31				
Road Width at Int. <sup>3</sup> (Face-face at stop bar, ft)	63	56	56	55				
Closest Int. Upstream <sup>4</sup> (ft. behind stop bar)	134	419	862	783				
Closest Int. Downstream <sup>4</sup> (ft. behind stop bar)	504	242	867	954				
1 <sup>st</sup> & 2 <sup>nd</sup> Closest Dwy. to Int. (ft. behind stop bar)	90	--	287	--	311	311	122	184
Dwy. Location	1	0	2	0	2	1	1	1
Dwy. Type	2	0	5	0	2	5	2	1
Median Type	2	1/4	4	1				
On-Street Parking	2	4	4	4				
On-Street Parking Location (ends ft. behind stop bar)	328	N/A	N/A	N/A				
Bike Lane	3	3	3	3				
Bus Stop Near Int.	3	3	3	3				
Bus Stops Location (ft. behind stop bar)	N/A	N/A	N/A	N/A				
Traffic Control Device <sup>5</sup>	1	1	1	1				
Signs on Traffic Light Pole/Span wire	0	0	1, 3	1, 4				
Pedestrian Crossing Light	1	1	1	1				

**Table F.52: Lane Geometry – Intersection #76**

Description	Road 1		Road 2	
Exclusive Left Turn Lane per direction <sup>6</sup>	1	1	1	1
Shared - Left Turn & Thru Lane <sup>6</sup>	0	0	0	0
Exclusive Thru Lane <sup>6</sup>	0	1	1	0
Shared - Right Turn & Thru Lane <sup>6</sup>	1	0	0	1
Exclusive Right Turn Lane <sup>6</sup>	0	1	0	0
Shared – Left turn / thru / right turn lane <sup>6</sup>	0	0	0	0
Free Right Turn Lane <sup>6</sup>	0	0	1	0
Right Turn Lane Length <sup>7</sup> (ft. behind stop bar)	N/A	221	N/A	N/A
Right Turn Lane - Taper Length <sup>7</sup> (ft)	N/A	28	N/A	N/A
Left Turn Lane Length <sup>7</sup> (ft. behind stop bar)	169	111	188	102
Left Turn Lane - Taper Length <sup>7</sup> (ft.)	N/A	28	41	N/A
Offset Left Turn Lane <sup>8</sup>	2	2	2	2
Are chevrons properly oriented? <sup>9</sup>	3	3	3	3
Channelization <sup>10</sup>	3	3	1	3
Exclusive Left Turn Lane Signalization <sup>11</sup>	5	5	3	3
Shared turn & thru lane/Exclusive Thru Lane Signalization <sup>11</sup>	1	1	1	1
Exclusive Right Turn Lane Signalization <sup>11</sup>	0	5	0	0

**Intersection 77: NW Bond St. at NW Oregon Ave., Bend (Deschutes County)**



**Aerial Photo**



**Street View**

Figure F.27: Photos for Intersection #77

**Table F.53: Location and Geometric Configuration – Intersection #77**

Location	Latitude: 44.059016		Longitude: -121.312244			
Milepost	--					
Int. Type <sup>1</sup>	1					
ODOT Region	Region 4					
Road 1 Name	NW Bond St.	Road 2 Name	NW Oregon Ave.			
No. of lanes <sup>2</sup>	2	No. of lanes <sup>2</sup>	2 (1,1)			
Road No.	--	Road No.	--			
<b>Description</b>	<b>Road 1 (One Way)</b>		<b>Road 2</b>			
Direction (NB, SB, WB, EB)	NB		WB	EB		
Speed Limit (mph)	20		20	20		
Road Width <sup>3</sup> (Face-face, ft)	56		55	57		
Road Width at Int. <sup>3</sup> (Face-face at stop bar, ft)	30		33	34		
Closest Int. Upstream <sup>4</sup> (ft. behind stop bar)	297		82	299		
Closest Int. Downstream <sup>4</sup> (ft. behind stop bar)	406		378	160		
1 <sup>st</sup> & 2 <sup>nd</sup> Closest Dwy. to Int. (ft. behind stop bar)	94	--	109	150	155	155
Dwy. Location	1	0	2	2	1	2
Dwy. Type	2	0	2	5	5	5
Median Type	6		1	1		
On-Street Parking	3		3	3		
On-Street Parking Location (ends ft. behind stop bar)	16		14	17		
Bike Lane	4		4	4		
Bus Stop Near Int.	3		3	3		
Bus Stops Location (ft. behind stop bar)	N/A		N/A	N/A		
Traffic Control Device <sup>5</sup>	1		1	1		
Signs on Traffic Light Pole/Span wire	0		13	13		
Pedestrian Crossing Light	1		1	1		



**Table F.54: Lane Geometry – Intersection #77**

<b>Description</b>	<b>Road 1</b>	<b>Road 2</b>	
Exclusive Left Turn Lane per direction <sup>6</sup>	0	0	0
Shared - Left Turn & Thru Lane <sup>6</sup>	1	0	1
Exclusive Thru Lane <sup>6</sup>	0	0	0
Shared - Right Turn & Thru Lane <sup>6</sup>	1	1	0
Exclusive Right Turn Lane <sup>6</sup>	0	0	0
Shared – Left turn / thru / right turn lane <sup>6</sup>	0	0	0
Free Right Turn Lane <sup>6</sup>	0	0	0
Right Turn Lane Length <sup>7</sup> (ft. behind stop bar)	N/A	N/A	N/A
Right Turn Lane - Taper Length <sup>7</sup> (ft)	N/A	N/A	N/A
Left Turn Lane Length <sup>7</sup> (ft. behind stop bar)	N/A	N/A	N/A
Left Turn Lane - Taper Length <sup>7</sup> (ft.)	N/A	N/A	N/A
Offset Left Turn Lane <sup>8</sup>	3	3	3
Are chevrons properly oriented? <sup>9</sup>	3	3	3
Channelization <sup>10</sup>	3	3	3
Exclusive Left Turn Lane Signalization <sup>11</sup>	0	0	0
Shared turn & thru lane/Exclusive Thru Lane Signalization <sup>11</sup>	2	2	2
Exclusive Right Turn Lane Signalization <sup>11</sup>	0	0	0

**Intersection 78: Washburn Way (CR 875) at Crosby Ave., Klamath Falls (Klamath County)**



**Aerial Photo**



**Street View**

Figure F.28: Photos for Intersection #78

**Table F.55: Location and Geometric Configuration – Intersection #78**

Location	Latitude: 42.205423		Longitude: -121.757155					
Milepost	--							
Int. Type <sup>1</sup>	1							
ODOT Region	Region 4							
Road 1 Name	Washburn Way	Road 2 Name	Crosby Ave.					
No. of lanes <sup>2</sup>	5 (2,2,TWLTL)	No. of lanes <sup>2</sup>	WB: 3 (1,1,TWLTL), EB: 2 (1,1)					
Road No.	County Rd 875	Road No.	--					
Description	Road 1		Road 2					
Direction (NB, SB, WB, EB)	NB	SB	WB	EB				
Speed Limit (mph)	35	35	25	25				
Road Width <sup>3</sup> (Face-face, ft)	67	68	37	35				
Road Width at Int. <sup>3</sup> (Face-face at stop bar, ft)	68	70	37	37				
Closest Int. Upstream <sup>4</sup> (ft. behind stop bar)	2106	1371	552	497				
Closest Int. Downstream <sup>4</sup> (ft. behind stop bar)	1451	2186	613	667				
1 <sup>st</sup> & 2 <sup>nd</sup> Closest Dwy. to Int. (ft. behind stop bar)	405	412	245	245	274	358	43	96
Dwy. Location	1	2	1	2	1	2	1	2
Dwy. Type	2	2	2	2	2	2	2	2
Median Type	2	2	2	1				
On-Street Parking	4	4	4	4				
On-Street Parking Location (ends ft. behind stop bar)	N/A	N/A	N/A	N/A				
Bike Lane	3	3	4	4				
Bus Stop Near Int.	3	2	1	3				
Bus Stops Location (ft. behind stop bar)	N/A	213	220	N/A				
Traffic Control Device <sup>5</sup>	1	1	1	1				
Signs on Traffic Light Pole/Span wire	0	0	5	5				
Pedestrian Crossing Light	1	1	1	1				

**Table F.56: Lane Geometry – Intersection #78**

<b>Description</b>	<b>Road 1</b>		<b>Road 2</b>	
Exclusive Left Turn Lane per direction <sup>6</sup>	1	1	1	0
Shared - Left Turn & Thru Lane <sup>6</sup>	0	0	0	0
Exclusive Thru Lane <sup>6</sup>	1	1	0	0
Shared - Right Turn & Thru Lane <sup>6</sup>	1	1	1	0
Exclusive Right Turn Lane <sup>6</sup>	0	0	0	0
Shared – Left turn / thru / right turn lane <sup>6</sup>	0	0	0	1
Free Right Turn Lane <sup>6</sup>	0	0	0	0
Right Turn Lane Length <sup>7</sup> (ft. behind stop bar)	N/A	N/A	N/A	N/A
Right Turn Lane - Taper Length <sup>7</sup> (ft)	N/A	N/A	N/A	N/A
Left Turn Lane Length <sup>7</sup> (ft. behind stop bar)	127	150	84	N/A
Left Turn Lane - Taper Length <sup>7</sup> (ft.)	72	85	93	N/A
Offset Left Turn Lane <sup>8</sup>	2	2	3	3
Are chevrons properly oriented? <sup>9</sup>	3	3	3	3
Channelization <sup>10</sup>	3	3	3	3
Exclusive Left Turn Lane Signalization <sup>11</sup>	5	5	1	0
Shared turn & thru lane/Exclusive Thru Lane Signalization <sup>11</sup>	1	1	1	1
Exclusive Right Turn Lane Signalization <sup>11</sup>	0	0	0	0

## REGION 5 SITES FOR VALIDATION

**Intersection 79: Umatilla-Stanfield Hwy. (US 395) at W Orchard Ave. / E Hurlburt Ave.,  
Hermiston (Umatilla County)**



**Aerial Photo**



**Street View**

Figure F.29: Photos for Intersection #79

**Table F.57: Location and Geometric Configuration – Intersection #79**

Location	Latitude: 45.839548		Longitude: -119.290005					
Milepost	5.53							
Int. Type <sup>1</sup>	1							
ODOT Region	Region 5							
Road 1 Name	Umatilla-Stanfield Hwy.		Road 2 Name	W Orchard Ave. / E Hurlburt Ave.				
No. of lanes <sup>2</sup>	5 (2,2,TWLTL)		No. of lanes <sup>2</sup>	2 (1,1)				
Road No.	US 395		Road No.	--				
Description	Road 1				Road 2			
Direction (NB, SB, WB, EB)	NB		SB		WB		EB	
Speed Limit (mph)	30		30		25		25	
Road Width <sup>3</sup> (Face-face, ft)	65		53		47		42	
Road Width at Int. <sup>3</sup> (Face-face at stop bar, ft)	66		67		54		43	
Closest Int. Upstream <sup>4</sup> (ft. behind stop bar)	298		280		248		129	
Closest Int. Downstream <sup>4</sup> (ft. behind stop bar)	359		372		218		337	
1 <sup>st</sup> & 2 <sup>nd</sup> Closest Dwy. to Int. (ft. behind stop bar)	144	208	149	--	19	24	--	--
Dwy. Location	1	1	2	0	1	2	0	0
Dwy. Type	2	2	2	0	2	2	0	0
Median Type	2		1		1		1	
On-Street Parking	4		4		1		4	
On-Street Parking Location (ends ft. behind stop bar)	N/A		N/A		131		N/A	
Bike Lane	4		4		4		4	
Bus Stop Near Int.	3		3		3		3	
Bus Stops Location (ft. behind stop bar)	N/A		N/A		N/A		N/A	
Traffic Control Device <sup>5</sup>	1		1		1		1	
Signs on Traffic Light Pole/Span wire	0		20		5, 1, 4		5, 1, 4	
Pedestrian Crossing Light	1		1		1		1	

**Table F.58: Lane Geometry – Intersection #79**

Description	Road 1		Road 2	
Exclusive Left Turn Lane per direction <sup>6</sup>	1	1	1	1
Shared - Left Turn & Thru Lane <sup>6</sup>	0	0	0	0
Exclusive Thru Lane <sup>6</sup>	1	1	0	0
Shared - Right Turn & Thru Lane <sup>6</sup>	1	1	1	1
Exclusive Right Turn Lane <sup>6</sup>	0	0	0	0
Shared – Left turn / thru / right turn lane <sup>6</sup>	0	0	0	0
Free Right Turn Lane <sup>6</sup>	0	0	0	0
Right Turn Lane Length <sup>7</sup> (ft. behind stop bar)	N/A	N/A	N/A	N/A
Right Turn Lane - Taper Length <sup>7</sup> (ft)	N/A	N/A	N/A	N/A
Left Turn Lane Length <sup>7</sup> (ft. behind stop bar)	127	77	83	N/A
Left Turn Lane - Taper Length <sup>7</sup> (ft.)	78	50	26	N/A
Offset Left Turn Lane <sup>8</sup>	2	2	2	2
Are chevrons properly oriented? <sup>9</sup>	3	3	3	3
Channelization <sup>10</sup>	3	3	3	3
Exclusive Left Turn Lane Signalization <sup>11</sup>	3	3	0	1
Shared turn & thru lane/Exclusive Thru Lane Signalization <sup>11</sup>	2	2	2	1
Exclusive Right Turn Lane Signalization <sup>11</sup>	0	3*	0	0

\*Right turn on red allowed during certain times of the day (indicated with a blank out sign).

**Intersection 80: SW Court Ave. (US 30) at SW 10th St., Pendleton (Umatilla County)**



**Aerial Photo**



**Street View**

Figure F.30: Photos for Intersection #80



**Table F.59: Location and Geometric Configuration – Intersection #80**

Location	Latitude: 45.669801		Longitude: -118.796873			
Milepost	2.88					
Int. Type <sup>1</sup>	1					
ODOT Region	Region 5					
Road 1 Name	SW Court Ave.	Road 2 Name	SW 10 <sup>th</sup> St.			
No. of lanes <sup>2</sup>	2	No. of lanes <sup>2</sup>	NB: 3 (1,1,TWLT), SB: 2 (1,1)			
Road No.	US 30	Road No.	--			
<b>Description</b>	<b>Road 1 (One Way)</b>		<b>Road 2</b>			
Direction (NB, SB, WB, EB)	WB		NB	SB		
Speed Limit (mph)	30		--	--		
Road Width <sup>3</sup> (Face-face, ft)	39		42	35		
Road Width at Int. <sup>3</sup> (Face-face at stop bar, ft)	39		42	52		
Closest Int. Upstream <sup>4</sup> (ft. behind stop bar)	205		347	544		
Closest Int. Downstream <sup>4</sup> (ft. behind stop bar)	525		606	417		
1 <sup>st</sup> & 2 <sup>nd</sup> Closest Dwy. to Int. (ft. behind stop bar)	28	67	23	74	40	107
Dwy. Location	1	2	2	1	2	2
Dwy. Type	2	2	2	2	2	2
Median Type	6		2	1		
On-Street Parking	1		4	1		
On-Street Parking Location (ends ft. behind stop bar)	Unclear		N/A	132		
Bike Lane	4		5	5		
Bus Stop Near Int.	3		3	3		
Bus Stops Location (ft. behind stop bar)	N/A		N/A	N/A		
Traffic Control Device <sup>5</sup>	2		2	2		
Signs on Traffic Light Pole/Span wire	0		5, 13	13		
Pedestrian Crossing Light	1		1	1		

**Table F.60: Lane Geometry – Intersection #80**

<b>Description</b>	<b>Road 1 (One Way)</b>	<b>Road 2</b>	
Exclusive Left Turn Lane per direction <sup>6</sup>	0	1	0
Shared - Left Turn & Thru Lane <sup>6</sup>	1	0	0
Exclusive Thru Lane <sup>6</sup>	0	1	1
Shared - Right Turn & Thru Lane <sup>6</sup>	1	0	0
Exclusive Right Turn Lane <sup>6</sup>	0	0	1
Shared – Left turn / thru / right turn lane <sup>6</sup>	0	0	0
Free Right Turn Lane <sup>6</sup>	0	0	0
Right Turn Lane Length <sup>7</sup> (ft. behind stop bar)	N/A	79	59
Right Turn Lane - Taper Length <sup>7</sup> (ft)	N/A	39	N/A
Left Turn Lane Length <sup>7</sup> (ft. behind stop bar)	N/A	N/A	N/A
Left Turn Lane - Taper Length <sup>7</sup> (ft.)	N/A	N/A	N/A
Offset Left Turn Lane <sup>8</sup>	3	3	3
Are chevrons properly oriented? <sup>9</sup>	3	3	3
Channelization <sup>10</sup>	3	3	3
Exclusive Left Turn Lane Signalization <sup>11</sup>	0	1	0
Shared turn & thru lane/Exclusive Thru Lane Signalization <sup>11</sup>	1	1	1
Exclusive Right Turn Lane Signalization <sup>11</sup>	0	0	1

\*Sharrow lane pavement markings added after May 2012

**Intersection 81: N 1st St. / Umatilla-Stanfield Hwy. (US 395) at W Locust Ave. / E Main St.,  
Hermiston (Umatilla County)**



**Aerial Photo**



**Street View**

Figure F.31: Photos for Intersection #81

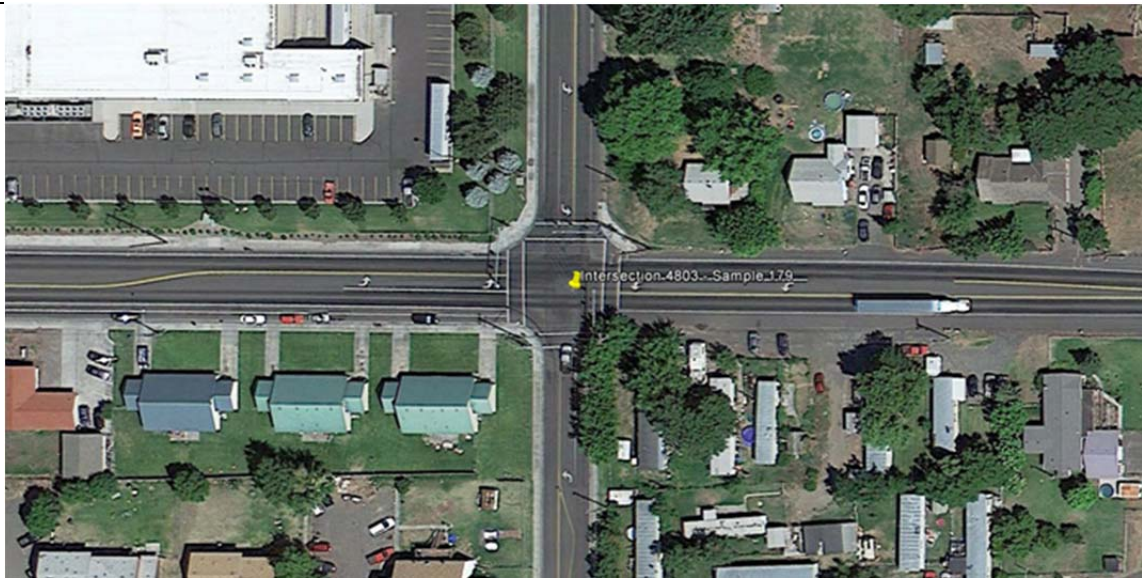
**Table F.61: Location and Geometric Configuration – Intersection #81**

Location	Latitude: 45.840515		Longitude: -119.290222					
Milepost	5.46							
Int. Type <sup>1</sup>	1							
ODOT Region	Region 5							
Road 1 Name	N 1 <sup>st</sup> St / Umatilla-Stanfield Hwy.		Road 2 Name	W Locust Ave. / E Main St.				
No. of lanes <sup>2</sup>	4 (2,2)		No. of lanes <sup>2</sup>	2 (1,1)				
Road No.	US 395		Road No.	--				
<b>Description</b>	<b>Road 1</b>		<b>Road 2</b>					
Direction (NB, SB, WB, EB)	NB	SB	WB	EB				
Speed Limit (mph)	30	30	25	25				
Road Width <sup>3</sup> (Face-face, ft)	54	54	47	41				
Road Width at Int. <sup>3</sup> (Face-face at stop bar, ft)	55	54	47	41				
Closest Int. Upstream <sup>4</sup> (ft. behind stop bar)	281	248	305	150				
Closest Int. Downstream <sup>4</sup> (ft. behind stop bar)	328	359	315	394				
1 <sup>st</sup> & 2 <sup>nd</sup> Closest Dwy. to Int. (ft. behind stop bar)	138	--	131	153	--	--	55	84
Dwy. Location	1	0	2	1	0	0	1	2
Dwy. Type	2	0	2	2	0	0	5	2
Median Type	1		1		1		1	
On-Street Parking	4		4		3		4	
On-Street Parking Location (ends ft. behind stop bar)	N/A		N/A		20 / 65		N/A	
Bike Lane	4		4		4		4	
Bus Stop Near Int.	3		3		3		3	
Bus Stops Location (ft. behind stop bar)	N/A		N/A		N/A		N/A	
Traffic Control Device <sup>5</sup>	1		1		1		1	
Signs on Traffic Light Pole/Span wire	0		0		23		0	
Pedestrian Crossing Light	1		1		1		1	

**Table F.62: Lane Geometry – Intersection #81**

Description	Road 1		Road 2	
Exclusive Left Turn Lane per direction <sup>6</sup>	1	1	0	0
Shared - Left Turn & Thru Lane <sup>6</sup>	0	0	0	0
Exclusive Thru Lane <sup>6</sup>	1	1	0	0
Shared - Right Turn & Thru Lane <sup>6</sup>	1	1	0	0
Exclusive Right Turn Lane <sup>6</sup>	0	0	0	0
Shared – Left turn / thru / right turn lane <sup>6</sup>	0	0	1	1
Free Right Turn Lane <sup>6</sup>	0	0	0	0
Right Turn Lane Length <sup>7</sup> (ft. behind stop bar)	N/A	N/A	N/A	N/A
Right Turn Lane - Taper Length <sup>7</sup> (ft)	N/A	N/A	N/A	N/A
Left Turn Lane Length <sup>7</sup> (ft. behind stop bar)	75	64	N/A	N/A
Left Turn Lane - Taper Length <sup>7</sup> (ft.)	55	54	N/A	N/A
Offset Left Turn Lane <sup>8</sup>	2	2	3	3
Are chevrons properly oriented? <sup>9</sup>	3	3	3	3
Channelization <sup>10</sup>	3	3	3	3
Exclusive Left Turn Lane Signalization <sup>11</sup>	5	5	0	0
Shared turn & thru lane/Exclusive Thru Lane Signalization <sup>11</sup>	1	1	1	1
Exclusive Right Turn Lane Signalization <sup>11</sup>	0	0	0	0

**Intersection 82: Hermiston Hwy. / E Elm Ave. (OR 207) at NE 4th St., Hermiston (Umatilla County)**



**Aerial Photo**



**Street View**

Figure F.32: Photos for Intersection #82

**Table F.63: Location and Geometric Configuration – Intersection #82**

Location	Latitude: 45.849551		Longitude: -119.285011					
Milepost	6.81							
Int. Type <sup>1</sup>	1							
ODOT Region	Region 5							
Road 1 Name	Hermiston Hwy. / E Elm Ave.		Road 2 Name	NE 4 <sup>th</sup> St.				
No. of lanes <sup>2</sup>	2 (1,1)		No. of lanes <sup>2</sup>	2 (1,1)				
Road No.	OR 207		Road No.	--				
<b>Description</b>	<b>Road 1</b>		<b>Road 2</b>					
Direction (NB, SB, WB, EB)	WB      EB		NB      SB					
Speed Limit (mph)	25      25		25      25					
Road Width <sup>3</sup> (Face-face, ft)	27      49		33      42					
Road Width at Int. <sup>3</sup> (Face- face at stop bar, ft)	49      52		35      47					
Closest Int. Upstream <sup>4</sup> (ft. behind stop bar)	3922      545		206      259					
Closest Int. Downstream <sup>4</sup> (ft. behind stop bar)	623      4000		348      296					
1 <sup>st</sup> & 2 <sup>nd</sup> Closest Dwy. to Int. (ft. behind stop bar)	55	105	13	738	193	--	212	--
Dwy. Location	2	1	1	1	1	0	2	0
Dwy. Type	1	1	1	1	5	0	1	0
Median Type	1		1		1		1	
On-Street Parking	4		2		4		4	
On-Street Parking Location (ends ft. behind stop bar)	N/A		0		N/A		N/A	
Bike Lane	4		3		4		3	
Bus Stop Near Int.	3		3		3		3	
Bus Stops Location (ft. behind stop bar)	N/A		N/A		N/A		N/A	
Traffic Control Device <sup>5</sup>	1		1		1		1	
Signs on Traffic Light Pole/Span wire	5		5		5		5	
Pedestrian Crossing Light	1		1		1		1	

**Table F.64: Lane Geometry – Intersection #82**

Description	Road 1		Road 2	
Exclusive Left Turn Lane per direction <sup>6</sup>	1	1	1	1
Shared - Left Turn & Thru Lane <sup>6</sup>	0	0	0	0
Exclusive Thru Lane <sup>6</sup>	0	0	0	0
Shared - Right Turn & Thru Lane <sup>6</sup>	1	1	1	1
Exclusive Right Turn Lane <sup>6</sup>	0	0	0	0
Shared – Left turn / thru / right turn lane <sup>6</sup>	0	0	0	0
Free Right Turn Lane <sup>6</sup>	0	0	0	0
Right Turn Lane Length <sup>7</sup> (ft. behind stop bar)	N/A	N/A	N/A	N/A
Right Turn Lane - Taper Length <sup>7</sup> (ft)	N/A	N/A	N/A	N/A
Left Turn Lane Length <sup>7</sup> (ft. behind stop bar)	130	202	88	146
Left Turn Lane - Taper Length <sup>7</sup> (ft.)	101	60	40	43
Offset Left Turn Lane <sup>8</sup>	2	2	2	2
Are chevrons properly oriented? <sup>9</sup>	3	3	3	3
Channelization <sup>10</sup>	3	3	3	3
Exclusive Left Turn Lane Signalization <sup>11</sup>	1	1	1	1
Shared turn & thru lane/Exclusive Thru Lane Signalization <sup>11</sup>	1	1	1	1
Exclusive Right Turn Lane Signalization <sup>11</sup>	0	0	0	0



**Intersection 83: E Main St. at 4th St., Hermiston (Umatilla County)**



**Aerial Photo**



**Street View**

**Figure F.33: Photos for Intersection #83**

**Table F.65: Location and Geometric Configuration – Intersection #83**

Location	Latitude: 45.840475		Longitude: -119.285097	
Milepost	--			
Int. Type <sup>1</sup>	1			
ODOT Region	Region 5			
Road 1 Name	E Main St.		Road 2 Name	4 <sup>th</sup> St.
No. of lanes <sup>2</sup>	2 (1,1)		No. of lanes <sup>2</sup>	2 (1,1)
Road No.	--		Road No.	--
<b>Description</b>	<b>Road 1</b>			
	<b>Road 1</b>		<b>Road 2</b>	
Direction (NB, SB, WB, EB)	WB	EB	NB	SB
Speed Limit (mph)	25	25	25	25
Road Width <sup>3</sup> (Face-face, ft)	48	45	41	41
Road Width at Int. <sup>3</sup> (Face-face at stop bar, ft)	48	45	41	41
Closest Int. Upstream <sup>4</sup> (ft. behind stop bar)	389	398	265	268
Closest Int. Downstream <sup>4</sup> (ft. behind stop bar)	460	451	336	332
1 <sup>st</sup> & 2 <sup>nd</sup> Closest Dwy. to Int. (ft. behind stop bar)	94	191	86	186
Dwy. Location	2	1	2	2
Dwy. Type	2	2	2	5
Median Type	1	1	1	1
On-Street Parking	3	3	3	3
On-Street Parking Location (ends ft. behind stop bar)	17	21 / 156	69 / 103	33 / 19
Bike Lane	4	4	4	4
Bus Stop Near Int.	3	3	3	3
Bus Stops Location (ft. behind stop bar)	N/A	N/A	N/A	N/A
Traffic Control Device <sup>5</sup>	1	1	1	1
Signs on Traffic Light Pole/Span wire	0	0	2	0
Pedestrian Crossing Light	1	1	1	1

**Table F.66: Lane Geometry – Intersection #83**

Description	Road 1		Road 2	
Exclusive Left Turn Lane per direction <sup>6</sup>	1	1	0	0
Shared - Left Turn & Thru Lane <sup>6</sup>	0	0	1	0
Exclusive Thru Lane <sup>6</sup>	0	0	0	0
Shared - Right Turn & Thru Lane <sup>6</sup>	1	1	0	0
Exclusive Right Turn Lane <sup>6</sup>	0	0	1	0
Shared – Left turn / thru / right turn lane <sup>6</sup>	0	0	0	1
Free Right Turn Lane <sup>6</sup>	0	0	0	0
Right Turn Lane Length <sup>7</sup> (ft. behind stop bar)	N/A	N/A	76	N/A
Right Turn Lane - Taper Length <sup>7</sup> (ft)	N/A	N/A	N/A	N/A
Left Turn Lane Length <sup>7</sup> (ft. behind stop bar)	152	77	N/A	N/A
Left Turn Lane - Taper Length <sup>7</sup> (ft.)	71	56	N/A	N/A
Offset Left Turn Lane <sup>8</sup>	2	2	3	2
Are chevrons properly oriented? <sup>9</sup>	3	3	3	3
Channelization <sup>10</sup>	3	3	3	3
Exclusive Left Turn Lane Signalization <sup>11</sup>	5	5	0	0
Shared turn & thru lane/Exclusive Thru Lane Signalization <sup>11</sup>	1	1	1	1
Exclusive Right Turn Lane Signalization <sup>11</sup>	0	0	1	0

**Intersection 84: Court Ave. (US 30) at S Main St., Pendleton (Umatilla County)**



**Aerial Photo**



**Street View**

**Figure F.34: Photos for Intersection #84**

**Table F.67: Location and Geometric Configuration – Intersection #84**

Location	Latitude: 45.672667		Longitude: -118.787503	
Milepost	--			
Int. Type <sup>1</sup>	1			
ODOT Region	Region 5			
Road 1 Name	Court Ave.	Road 2 Name	S Main St.	
No. of lanes <sup>2</sup>	2	No. of lanes <sup>2</sup>	4 (2,2)	
Road No.	US 30	Road No.	--	
<b>Description</b>	<b>Road 1 (One Way)</b>		<b>Road 2</b>	
Direction (NB, SB, WB, EB)	WB		NB	SB
Speed Limit (mph)	20		25	25
Road Width <sup>3</sup> (Face-face, ft)	54		56	55
Road Width at Int. <sup>3</sup> (Face-face at stop bar, ft)	54		58	55
Closest Int. Upstream <sup>4</sup> (ft. behind stop bar)	204		340	302
Closest Int. Downstream <sup>4</sup> (ft. behind stop bar)	278		371	410
1 <sup>st</sup> & 2 <sup>nd</sup> Closest Dwy. to Int. (ft. behind stop bar)	--	--	--	--
Dwy. Location	0	0	0	0
Dwy. Type	0	0	0	0
Median Type	6		1	1
On-Street Parking	3		3	3
On-Street Parking Location (ends ft. behind stop bar)	27 / 18		18	10
Bike Lane	4		4	4
Bus Stop Near Int.	3		3	3
Bus Stops Location (ft. behind stop bar)	N/A		N/A	N/A
Traffic Control Device <sup>5</sup>	1		1	1
Signs on Traffic Light Pole/Span wire	0		13	13
Pedestrian Crossing Light	1		1	1

**Table F.68: Lane Geometry – Intersection #84**

<b>Description</b>	<b>Road 1 (One Way)</b>	<b>Road 2</b>	
Exclusive Left Turn Lane per direction <sup>6</sup>	0	0	0
Shared - Left Turn & Thru Lane <sup>6</sup>	1	1	0
Exclusive Thru Lane <sup>6</sup>	0	1	1
Shared - Right Turn & Thru Lane <sup>6</sup>	1	0	1
Exclusive Right Turn Lane <sup>6</sup>	0	0	0
Shared – Left turn / thru / right turn lane <sup>6</sup>	0	0	0
Free Right Turn Lane <sup>6</sup>	0	0	0
Right Turn Lane Length <sup>7</sup> (ft. behind stop bar)	N/A	N/A	N/A
Right Turn Lane - Taper Length <sup>7</sup> (ft)	N/A	N/A	N/A
Left Turn Lane Length <sup>7</sup> (ft. behind stop bar)	N/A	N/A	N/A
Left Turn Lane - Taper Length <sup>7</sup> (ft.)	N/A	N/A	N/A
Offset Left Turn Lane <sup>8</sup>	3	3	3
Are chevrons properly oriented? <sup>9</sup>	3	3	3
Channelization <sup>10</sup>	3	3	3
Exclusive Left Turn Lane Signalization <sup>11</sup>	0	0	0
Shared turn & thru lane/Exclusive Thru Lane Signalization <sup>11</sup>	2	2	2
Exclusive Right Turn Lane Signalization <sup>11</sup>	0	0	0

**Intersection 85: Southgate / SW Pendleton-John Day Hwy. (US 395) at SW Perkins Ave., Pendleton (Umatilla County)**



**Aerial Photo**



**Street View**

**Figure F.35: Photos for Intersection #85**

**Table F.69: Location and Geometric Configuration – Intersection #85**

Location	Latitude: 45.652757		Longitude: -118.812301	
Milepost	2.51			
Int. Type <sup>1</sup>	1			
ODOT Region	Region 5			
Road 1 Name	Southgate / SW Pendleton-John Day Hwy.		Road 2 Name	SW Perkins Ave.
No. of lanes <sup>2</sup>	NB: 3 (1,2), SB: 5 (2,2,TWLTL)		No. of lanes <sup>2</sup>	2 (1,1)
Road No.	US 395		Road No.	--
<b>Description</b>	<b>Road 1</b>		<b>Road 2</b>	
Direction (NB, SB, WB, EB)	NB	SB	WB	EB
Speed Limit (mph)	35	35	--	--
Road Width <sup>3</sup> (Face-face, ft)	53	71	35	35
Road Width at Int. <sup>3</sup> (Face-face at stop bar, ft)	67	72	37	42
Closest Int. Upstream <sup>4</sup> (ft. behind stop bar)	695	114	1108	1259
Closest Int. Downstream <sup>4</sup> (ft. behind stop bar)	210	794	1397	1204
1 <sup>st</sup> & 2 <sup>nd</sup> Closest Dwy. to Int. (ft. behind stop bar)	--	--	57	198
Dwy. Location	0	0	2	1
Dwy. Type	0	0	2	2
Median Type	1	2	6	6
On-Street Parking	4	4	4	3
On-Street Parking Location (ends ft. behind stop bar)	N/A	N/A	N/A	152.56
Bike Lane	3	3	4	4
Bus Stop Near Int.	3	3	3	3
Bus Stops Location (ft. behind stop bar)	N/A	N/A	N/A	N/A
Traffic Control Device <sup>5</sup>	1	1	1	1
Signs on Traffic Light Pole/Span wire	15	0	0	0
Pedestrian Crossing Light	1	1	1	2



**Table F.70: Lane Geometry – Intersection #85**

Description	Road 1		Road 2	
Exclusive Left Turn Lane per direction <sup>6</sup>	1	1	0	0
Shared - Left Turn & Thru Lane <sup>6</sup>	0	0	0	0
Exclusive Thru Lane <sup>6</sup>	0	1	0	0
Shared - Right Turn & Thru Lane <sup>6</sup>	1	1	0	0
Exclusive Right Turn Lane <sup>6</sup>	0	0	0	0
Shared – Left turn / thru / right turn lane <sup>6</sup>	0	0	1	1
Free Right Turn Lane <sup>6</sup>	0	0	0	0
Right Turn Lane Length <sup>7</sup> (ft. behind stop bar)	N/A	N/A	N/A	N/A
Right Turn Lane - Taper Length <sup>7</sup> (ft)	N/A	N/A	N/A	N/A
Left Turn Lane Length <sup>7</sup> (ft. behind stop bar)	80	87	N/A	N/A
Left Turn Lane - Taper Length <sup>7</sup> (ft.)	93	95	N/A	N/A
Offset Left Turn Lane <sup>8</sup>	2	2	3	3
Are chevrons properly oriented? <sup>9</sup>	3	3	3	3
Channelization <sup>10</sup>	3	3	3	3
Exclusive Left Turn Lane Signalization <sup>11</sup>	5	5	0	0
Shared turn & thru lane/Exclusive Thru Lane Signalization <sup>11</sup>	1	1	1	1
Exclusive Right Turn Lane Signalization <sup>11</sup>	0	0	0	0