

# Pennsylvania Department of Transportation

## *Pennsylvania Highway Statistics*



### *2007 Highway Data*

*Bureau of Planning and Research*

PUB 600 (9-08)

*US Route 22/322*



*Juniata County, PA*

# INTRODUCTION

***Pennsylvania Highway Statistics*** is annually updated to summarize a variety of highway mileage and travel information in Pennsylvania. Most of the information is derived from the Highway Performance Monitoring System (HPMS) and reflects 2007 travel activity and highway conditions.

The collection and compilation of this information was accomplished with the assistance of the Federal Highway Administration, Pennsylvania Turnpike Commission, Metropolitan Planning Organizations, Rural Planning Organizations, toll authorities and others. Without their support, this report would not be possible.

It is our goal to continuously improve this annual report as a service to anyone interested in Pennsylvania Highway Statistics. Any comments or suggestions will be greatly appreciated.

For more information, visit us through the PennDOT Homepage at <http://www.dot.state.pa.us>

If you have any questions concerning this report, please contact Mr. Gaye Liddick at (717) 787-5983 or email: [galiddick@state.pa.us](mailto:galiddick@state.pa.us)

Laine A. Heltebride, Acting Director  
Bureau of Planning and Research



# TABLE OF CONTENTS

<b>STATEWIDE MEASURES</b>	<b>PAGE</b>
Mileage and Travel – 2007 Highway Statistics	2
Mileage and Travel – Interstate and US Routes	3
Mileage and Travel – Federal Aid/Non-Federal Aid Systems	4
Mileage and Travel – Total System	5
Mileage – Rural, Small Urban, Urbanized Areas	6
Travel – Rural, Small Urban, Urbanized Areas	7
Travel – Vehicle Type by Highway Functional Classification	8
Mileage and Travel – Trends	9
<b>COUNTY AND DISTRICT MEASURES</b>	
Mileage – Jurisdiction	10
Travel – Jurisdiction	12
Mileage and Travel – National Highway System	14
Map of National Highway System	16
Mileage – Federal Aid System	18
Mileage – Highway Functional Classification	20
Travel – Highway Functional Classification	22
Statewide Traffic Trends	24
Mileage – Maintenance Functional Classification	26
Mileage and Travel – PennDOT System	28
Mileage and Travel – PennDOT Districts	30
<b>Functional Classification</b>	<b>32</b>
<b>Glossary</b>	<b>33</b>
<b>Customer Service Information</b>	<b>34</b>

## MILEAGE AND TRAVEL 2007 HIGHWAY STATISTICS

### Mileage and Travel 2007 Highway Statistics

PENNSYLVANIA HIGHWAY SYSTEMS	LINEAR MILES	DVMT
<b>TOTAL SYSTEM</b>	121,581	296,938,866
<i>Rural</i>	76,450	106,920,595
<i>Urban</i>	45,131	190,018,271
<b>FEDERAL AID SYSTEM</b>	28,160	249,994,394
<i>National Highway System</i>	5,495	134,987,602
<i>Interstate System</i>	1,759	70,682,779
<b>NON-FEDERAL AID SYSTEM</b>	93,421	46,944,472
<b>TOTAL STATE OWNED</b>	43,606	244,923,278
<i>PennDOT owned</i>	39,872	224,428,698
<i>Other PA State Agencies</i>	3,199	3,267,942
<i>Pennsylvania Turnpike</i>	535	17,226,638
<b>TOTAL NON STATE OWNED</b>	77,975	52,015,588
<i>Local Municipal owned</i>	77,126	50,572,927
<i>Federal Agency owned</i>	838	857,735
<i>Toll Bridge/Ferry</i>	11	584,926

DVMT = Daily Vehicle Miles of Travel

## MILEAGE AND TRAVEL SELECTED ROUTES

INTER-STATE ROUTE	TOTAL LINEAR MILES	TOTAL LANE MILES	TOTAL DVMT	MEAN AADT
I 70	80.68	323.21	2,588,006	32,076
I 76	349.62	1,454.46	13,449,370	38,469
I 78	75.49	316.93	3,197,860	42,360
I 79	179.38	739.72	5,654,766	31,524
I 80	311.34	1,265.05	9,048,211	29,062
I 81	232.74	978.12	10,348,181	44,462
I 83	50.93	214.19	3,087,772	60,631
I 84	54.89	221.81	1,269,464	23,128
I 86	7.00	27.99	64,552	9,226
I 90	46.39	185.56	1,363,230	29,387
I 95	51.02	309.08	6,358,860	124,627
I 99	51.51	208.02	897,922	17,434
I 176	11.34	44.62	278,346	24,537
I 180	28.84	121.79	797,511	27,651
I 276	32.65	166.50	2,648,555	81,120
I 279	19.52	87.60	1,520,438	77,879
I 283	2.91	11.63	161,264	55,474
I 376	14.70	76.27	1,173,810	79,862
I 380	24.48	97.90	532,130	21,742
I 476	129.61	542.90	5,838,679	45,047
I 579	1.57	6.27	110,058	70,190
I 676	2.55	15.13	336,594	131,998

US ROUTE	TOTAL LINEAR MILES	TOTAL LANE MILES	TOTAL DVMT	MEAN AADT
US 1	92.37	427.25	3,677,990	39,818
US 6	401.38	936.71	2,623,073	6,535
US 6N	26.59	55.69	100,545	3,781
US 11	244.43	665.05	3,061,609	12,525
US 13	44.35	149.92	764,655	17,241
US 15	139.57	531.36	2,522,940	18,077
US 19	169.52	442.38	1,704,578	10,056
US 20	45.38	157.91	501,163	11,043
US 22	275.49	983.97	6,050,409	21,962
US 30	308.62	929.06	6,092,667	19,741
US 40	80.66	204.30	638,674	7,918
US 62	113.69	263.88	619,466	5,449
US 119	120.50	336.95	1,351,527	11,216
US 202	63.85	214.46	2,353,659	36,860
US 206	0.40	0.80	3,400	8,500
US 209	130.60	284.54	1,204,939	9,226
US 219	208.05	548.69	1,457,935	7,008
US 220	159.91	432.75	1,349,451	8,439
US 222	99.57	303.80	2,471,030	24,816
US 224	10.16	23.82	97,960	9,645
US 322	276.94	659.23	2,859,815	10,327
US 422	197.61	628.88	4,077,196	20,632
US 522	101.54	204.14	479,922	4,726

Values are reported for the primary Traffic Route on a section of highway. Where Traffic Routes run concurrent, such as for US 22/322, the mileage and DVMT of that section of road are only reported for US 22.

**MILEAGE AND TRAVEL  
FEDERAL AID/NON-FEDERAL AID SYSTEM**

FEDERAL AID HIGHWAYS

RURAL:

FUNCTIONAL CLASS	MILES	DVMT
Interstate	1,071	29,658,125
Other Principal Arterials	1,963	18,512,715
Minor Arterials	4,540	19,801,772
Major Collectors	7,223	12,918,875
<b>SUB TOTAL</b>	<b>14,797</b>	<b>80,891,486</b>

URBAN:

FUNCTIONAL CLASS	MILES	DVMT
Interstate	688	41,024,654
Other Freeways/Expressways	549	19,674,427
Other Principal Arterials	2,842	48,911,681
Minor Arterials	3,956	36,802,735
Collectors	5,328	22,689,410
<b>SUB TOTAL</b>	<b>13,363</b>	<b>169,102,908</b>

FEDERAL AID TOTAL \*

<b>28,160</b>	<b>249,994,394</b>
---------------	--------------------

NON-FEDERAL AID HIGHWAYS

RURAL:

FUNCTIONAL CLASS	MILES	DVMT
Minor Collectors	7,255	6,019,848
Local Roads	54,397	20,009,261
<b>SUB TOTAL</b>	<b>61,652</b>	<b>26,029,108</b>

URBAN:

FUNCTIONAL CLASS	MILES	DVMT
Local Roads	31,768	20,915,363
<b>SUB TOTAL</b>	<b>31,768</b>	<b>20,915,363</b>

NON-FEDERAL AID TOTAL

<b>93,421</b>	<b>46,944,471</b>
---------------	-------------------

GRAND TOTAL

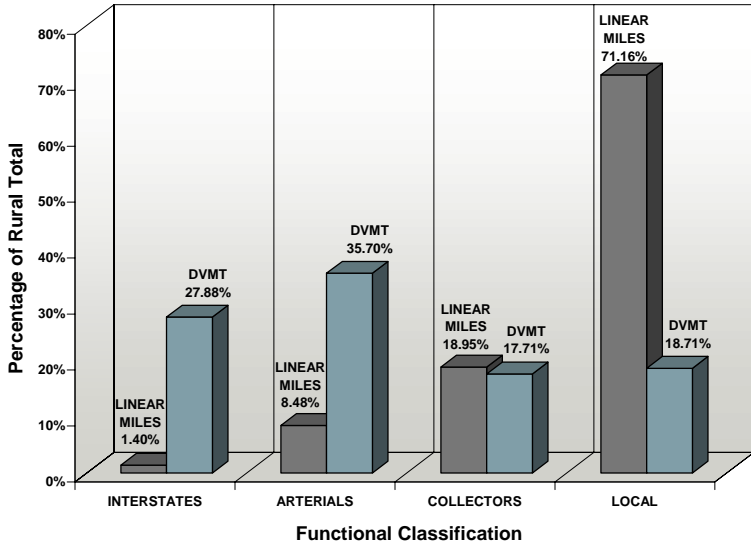
<b>121,581</b>	<b>296,938,866</b>
----------------	--------------------

\* Includes Turnpike and Toll Bridges

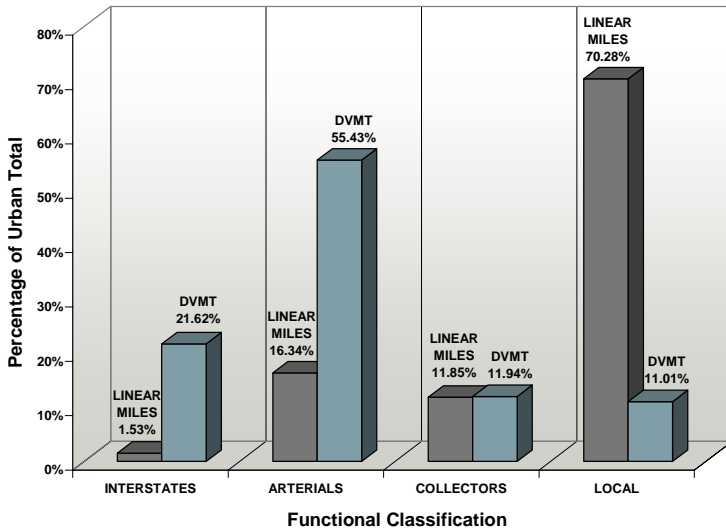


**MILEAGE AND TRAVEL  
TOTAL SYSTEM**

**MILEAGE AND TRAVEL BY FUNCTIONAL CLASSIFICATION  
AS A PERCENTAGE OF TOTAL RURAL SYSTEM**



**MILEAGE AND TRAVEL BY FUNCTIONAL CLASSIFICATION  
AS A PERCENTAGE OF TOTAL URBAN SYSTEM**



## MILEAGE RURAL, SMALL URBAN, URBANIZED AREA

LINEAR MILES BY URBANIZED AREA AND FUNCTIONAL CLASSIFICATION	INTERSTATE	OTH. FRWY/EXPWY	OTHER PRINC ART	MINOR ARTERIAL	MAJOR COLLECTOR	MINOR COLLECTOR	LOCAL ROADS	TOTAL LINEAR MILES
Allentown/Beth/Easton	56	36	173	180	386	0	2,073	2,904
Altoona	15	0	40	36	63	0	341	495
Binghamton, NY	4	0	0	1	11	0	22	38
Erie	18	0	67	111	100	0	622	918
Hagerstown, MD	3	0	2	0	2	0	10	17
Harrisburg	67	31	110	152	286	0	1,445	2,090
Hazleton	8	0	18	30	36	0	259	351
Johnstown	0	12	34	51	66	0	346	509
Lancaster	7	28	63	172	210	0	1,227	1,707
Lebanon	0	0	29	20	42	0	272	364
Monessen	17	6	22	63	63	0	444	615
Philadelphia	163	112	904	971	1,322	0	8,821	12,292
Pittsburgh	170	134	550	905	872	0	6,724	9,356
Pottstown	0	9	47	17	81	0	357	511
Reading	5	23	79	92	165	0	791	1,155
Scranton/Wilkes-Barre	52	32	122	224	231	0	1,376	2,037
State College	0	13	26	25	38	0	198	301
Uniontown/Connellsville	0	22	27	30	87	0	294	460
Weirton, WV	0	2	0	0	2	0	0	4
Williamsport	15	5	42	53	56	0	279	449
York	16	10	48	95	166	0	854	1,190
Youngstown, OH	6	6	17	34	46	0	214	322
<b>Urbanized Area Total</b>	<b>623</b>	<b>480</b>	<b>2,421</b>	<b>3,260</b>	<b>4,332</b>	<b>0</b>	<b>26,971</b>	<b>38,086</b>
<b>Small Urban Area Total</b>	<b>65</b>	<b>69</b>	<b>421</b>	<b>696</b>	<b>997</b>	<b>0</b>	<b>4,798</b>	<b>7,045</b>
<b>Rural Area Total</b>	<b>1,071</b>	<b>0</b>	<b>1,963</b>	<b>4,540</b>	<b>7,223</b>	<b>7,256</b>	<b>54,398</b>	<b>76,451</b>
<b>GRAND TOTAL</b>	<b>1,759</b>	<b>549</b>	<b>4,805</b>	<b>8,496</b>	<b>12,551</b>	<b>7,256</b>	<b>86,166</b>	<b>121,581</b>

## TRAVEL RURAL, SMALL URBAN, URBANIZED AREA

DVMT (THOUSANDS) BY URBANIZED AREA AND FUNCTIONAL CLASSIFICATION	INTERSTATE	OTH. FRWY/EXPWY	OTHER PRINC ART	MINOR ARTERIAL	MAJOR COLLECTOR	MINOR COLLECTOR	LOCAL ROADS	TOTAL DVMT
Allentown/Beth/Easton	2,512	2,055	3,141	2,070	1,674	0	1,306	12,758
Altoona	374	0	530	359	196	0	188	1,648
Binghamton, NY	100	0	0	4	47	0	20	172
Erie	691	0	995	938	402	0	327	3,352
Hagerstown, MD	150	0	19	0	9	0	3	182
Harrisburg	4,068	1,490	2,102	1,630	1,206	0	1,235	11,732
Hazleton	303	0	251	262	90	0	160	1,066
Johnstown	0	236	323	311	224	0	154	1,248
Lancaster	201	1,612	1,128	2,220	957	0	908	7,027
Lebanon	0	0	425	143	172	0	170	910
Monessen	610	57	221	322	165	0	147	1,523
Philadelphia	16,716	5,819	17,786	11,211	7,536	0	6,939	66,007
Pittsburgh	8,541	3,862	9,802	7,560	3,787	0	4,821	38,374
Pottstown	0	408	652	140	275	0	173	1,648
Reading	124	1,119	1,568	833	709	0	404	4,757
Scranton/Wilkes-Barre	2,461	783	1,845	1,634	727	0	905	8,354
State College	0	253	390	205	212	0	139	1,198
Uniontown/Connellsville	0	275	385	175	215	0	216	1,265
Weirton, WV	0	38	0	0	8	0	173.36	46
Williamsport	539	117	571	398	121	0	165	1,910
York	885	367	1,061	892	806	0	460	4,471
Youngstown, OH	173	88	229	203	109	0	107	909
<b>Urbanized Area Total</b>	<b>38,448</b>	<b>18,577</b>	<b>43,425</b>	<b>31,510</b>	<b>19,648</b>	<b>0</b>	<b>18,948</b>	<b>170,556</b>
<b>Small Urban Area Total</b>	<b>2,576</b>	<b>1,097</b>	<b>5,487</b>	<b>5,293</b>	<b>3,042</b>	<b>0</b>	<b>1,967</b>	<b>19,462</b>
<b>Rural Area Total</b>	<b>29,658</b>	<b>0</b>	<b>18,513</b>	<b>19,802</b>	<b>12,919</b>	<b>6,020</b>	<b>20,009</b>	<b>106,921</b>
<b>GRAND TOTAL</b>	<b>70,683</b>	<b>19,674</b>	<b>67,424</b>	<b>56,605</b>	<b>35,608</b>	<b>6,020</b>	<b>40,925</b>	<b>296,939</b>

**TRAVEL**  
**VEHICLE TYPE BY HIGHWAY FUNCTIONAL CLASS**

FUNCTIONAL CLASSIFICATION SYSTEM		DAILY VEHICLE MILES OF TRAVEL (THOUSANDS)									TOTAL
		PASS- ENGER CARS	OTHER 2-AXLE 4 TIRE SINGLE- UNIT VEHICLES	2-AXLE 6 TIRE SINGLE- UNIT TRUCKS	3-AXLE SINGLE- UNIT TRUCKS	4 OR MORE SINGLE- TRAILER TRUCKS	4 OR FEWER AXLE- SINGLE- TRAILER TRUCKS	5-AXLE SINGLE- TRAILER TRUCKS	5-AXLE SINGLE- TRAILER TRUCKS	6-AXLE MULTI- TRAILER TRUCKS	
R U R A L	INTERSTATE 01	17,541	3,577	1,022	241	83	1,165	5,681	322	173	29,805
	OTH PRINC ARTER 02	12,870	3,306	678	182	75	253	940	22	39	18,365
	MINOR ARTERIAL 06	12,853	5,346	739	192	75	164	408	4	20	19,802
	MAJ COLLECTOR 07	8,459	3,488	572	129	44	71	146	1	8	12,919
	MIN COLLECTOR 08	3,732	1,806	337	59	16	29	40	1	1	6,020
	LOCAL 09	12,220	6,003	1,315	202	50	74	144	0	2	20,009
<b>TOTAL</b>		<b>67,676</b>	<b>23,526</b>	<b>4,662</b>	<b>1,006</b>	<b>344</b>	<b>1,757</b>	<b>7,359</b>	<b>350</b>	<b>242</b>	<b>106,921</b>
U R B A N	INTERSTATE 11	30,033	4,930	1,368	333	123	567	3,513	131	86	41,085
	OTH FRWY/EXPWY 12	14,632	3,334	632	141	55	169	616	10	25	19,614
	OTH PRINC ARTER 14	36,830	8,804	1,560	333	108	328	885	15	49	48,912
	MINOR ARTERIAL 16	27,359	7,545	1,111	224	66	158	317	4	18	36,803
	COLLECTORS 17	17,196	4,198	803	177	39	118	150	2	7	22,689
	LOCAL 19	15,806	3,869	855	144	31	65	138	2	4	20,915
<b>TOTAL</b>		<b>141,857</b>	<b>32,680</b>	<b>6,330</b>	<b>1,352</b>	<b>422</b>	<b>1,404</b>	<b>5,618</b>	<b>164</b>	<b>190</b>	<b>190,018</b>
<b>GRAND TOTAL</b>		<b>209,532</b>	<b>56,206</b>	<b>10,992</b>	<b>2,358</b>	<b>766</b>	<b>3,162</b>	<b>12,977</b>	<b>514</b>	<b>432</b>	<b>296,939</b>

Travel Activity by Vehicle Type and Functional System is an annual report required by the Federal Highway Administration. This report provides a summary of the traffic mix on various types of highways from local roads, which provide access to individual parcels of land, to limited access highways such as freeways, expressways and Interstates.

## MILEAGE AND TRAVEL TRENDS

### TOTAL DVMT VS. HEAVY TRUCK DVMT (THOUSANDS)

		1998	1999	2000	2001	2002	2003	2004	2005	2006	2007
INTERSTATE	Total DVMT	59,095	61,192	61,500	63,037	65,880	68,362	70,246	70,304	70,982	70,890
	Heavy Truck DVMT (5 Axle +)	8,253	8,512	8,580	8,824	9,507	9,831	10,035	9,918	10,002	9,906
	Heavy Truck DVMT (% of Total)	13.97%	13.91%	13.95%	14.00%	14.43%	14.38%	14.29%	14.11%	14.09%	13.97%
NON- INTERSTATE	Total DVMT	215,856	219,585	219,048	220,659	221,323	222,364	223,541	225,324	225,324	226,049
	Heavy Truck DVMT (5 Axle +)	3,589	3,663	3,686	3,742	3,792	3,888	3,792	3,835	3,971	4,017
	Heavy Truck DVMT (% of Total)	1.66%	1.67%	1.68%	1.70%	1.71%	1.75%	1.70%	1.70%	1.76%	1.78%
STATEWIDE	Total DVMT	274,951	280,777	280,548	283,696	287,203	290,726	293,787	295,628	296,149	296,939
	Heavy Truck DVMT (5 Axle +)	11,842	12,175	12,266	12,566	13,299	13,719	13,827	13,753	13,971	13,923
	Heavy Truck DVMT (% of Total)	4.31%	4.34%	4.37%	4.43%	4.63%	4.72%	4.71%	4.65%	4.72%	4.69%

### DVMT (THOUSANDS)

		1998	1999	2000	2001	2002	2003	2004	2005	2006	2007
STATEWIDE	Urban DVMT	154,310	155,513	154,969	157,632	159,351	180,314	187,624	189,109	189,060	190,018
	% of Total	56.12%	55.39%	55.24%	55.56%	55.48%	62.02%	63.86%	63.97%	63.84%	63.99%
	Rural DVMT	120,641	125,264	125,579	126,064	127,852	110,412	106,163	106,519	107,088	106,921
	% of Total	43.88%	44.61%	44.76%	44.44%	44.52%	37.98%	36.14%	36.03%	36.16%	36.01%
TOTAL DVMT		274,951	280,777	280,548	283,696	287,203	290,726	293,787	295,628	296,148	296,939

### LINEAR MILES

		1998	1999	2000	2001	2002	2003	2004	2005	2006	2007
STATEWIDE	Urban Linear Miles	34,137	34,286	34,251	34,526	34,712	37,689	44,255	44,481	44,924	45,131
	% of Total	28.62%	28.72%	28.63%	28.78%	28.86%	31.30%	36.69%	36.86%	37.04%	37.12%
	Rural Linear Miles	85,142	85,095	85,392	85,460	85,586	82,734	76,368	76,186	76,370	76,450
	% of Total	71.38%	71.28%	71.37%	71.22%	71.14%	68.70%	63.31%	63.14%	62.96%	62.88%
TOTAL LINEAR MILES		119,279	119,381	119,643	119,986	120,298	120,423	120,623	120,667	121,294	121,581

## MILEAGE JURISDICTION

COUNTY	PENN- DOT LINEAR MILES	OTHER AGENCIES LINEAR MILES*	TURNPIKE LINEAR MILES	TOLL BRIDGE LINEAR MILES	LOCAL MUNICIPAL LINEAR MILES	TOTAL LINEAR MILES
1 ADAMS	543.6	52.5	0.0	0.0	819.9	1,416.0
2 ALLEGHENY	1,180.5	6.7	38.6	0.0	4,574.8	5,800.6
3 ARMSTRONG	657.3	14.1	0.0	0.0	1,149.2	1,820.6
4 BEAVER	604.1	23.6	24.4	0.0	1,034.4	1,686.5
5 BEDFORD	796.6	66.4	35.3	0.0	914.6	1,813.0
6 BERKS	880.5	58.7	4.8	0.0	2,358.7	3,302.6
7 BLAIR	463.6	5.6	0.0	0.0	757.7	1,226.9
8 BRADFORD	896.5	3.3	0.0	0.0	1,595.6	2,495.4
9 BUCKS	960.3	28.1	19.4	1.3	2,441.8	3,450.8
10 BUTLER	654.3	44.2	4.4	0.0	1,591.5	2,294.3
11 CAMBRIA	672.5	21.5	0.0	0.0	1,030.5	1,724.6
12 CAMERON	112.6	77.4	0.0	0.0	122.4	312.4
13 CARBON	268.7	20.2	26.9	0.0	404.3	720.1
14 CENTRE	588.5	272.1	0.0	0.0	875.3	1,735.9
15 CHESTER	1,021.5	27.7	26.0	0.0	2,459.0	3,534.2
16 CLARION	469.0	12.7	0.0	0.0	948.7	1,430.4
17 CLEARFIELD	802.6	131.2	0.0	0.0	1,133.5	2,067.3
18 CLINTON	296.1	376.6	0.0	0.0	410.0	1,082.7
19 COLUMBIA	492.5	4.6	0.0	0.0	895.7	1,392.9
20 CRAWFORD	909.9	29.9	0.0	0.0	1,499.2	2,439.0
21 CUMBERLAND	556.8	108.6	37.9	0.0	1,239.8	1,943.1
22 DAUPHIN	557.3	16.5	12.9	1.0	1,298.5	1,886.2
23 DELAWARE	447.9	21.3	0.0	1.4	1,342.3	1,812.9
24 ELK	293.1	163.2	0.0	0.0	373.6	829.9
25 ERIE	781.7	28.5	0.0	0.0	1,775.7	2,586.0
26 FAYETTE	758.6	14.7	6.2	0.3	1,301.7	2,081.4
27 FOREST	201.3	127.5	0.0	0.0	163.1	491.8
28 FRANKLIN	613.9	92.4	14.9	0.0	1,029.4	1,750.6
29 FULTON	342.2	54.0	19.2	0.0	323.0	738.4
30 GREENE	573.7	13.5	0.0	0.0	929.1	1,516.3
31 HUNTINGDON	598.5	205.1	2.5	0.0	635.4	1,441.4
32 INDIANA	798.7	29.7	0.0	0.0	1,262.5	2,090.9
33 JEFFERSON	555.7	9.7	0.0	0.0	841.2	1,406.6
34 JUNIATA	354.9	8.0	0.0	0.0	372.6	735.4

\* Includes State and Federal Agency Miles

## MILEAGE JURISDICTION

COUNTY	PENN- DOT LINEAR MILES	OTHER AGENCIES LINEAR MILES*	TURNPIKE LINEAR MILES	TOLL BRIDGE LINEAR MILES	LOCAL MUNICIPAL LINEAR MILES	TOTAL LINEAR MILES
35 LACKAWANNA	557.1	22.3	11.9	0.0	1,006.4	1,597.7
36 LANCASTER	1,046.9	18.0	30.6	0.0	2,781.9	3,877.4
37 LAWRENCE	385.3	2.7	17.4	0.0	791.5	1,196.9
38 LEBANON	369.7	1.4	5.9	0.0	810.9	1,187.9
39 LEHIGH	535.8	7.9	25.7	0.0	1,459.1	2,028.5
40 LUZERNE	852.8	38.7	20.1	0.0	1,763.8	2,675.3
41 LYCOMING	716.5	219.0	0.0	0.0	1,255.2	2,190.7
42 MCKEAN	381.7	163.9	0.0	0.0	479.7	1,025.2
43 MERCER	743.8	32.0	0.0	0.0	1,266.6	2,042.4
44 MIFFLIN	239.7	97.2	0.0	0.0	378.4	715.3
45 MONROE	519.0	51.2	0.0	0.4	1,007.4	1,577.9
46 MONTGOMERY	769.4	50.5	39.2	0.0	2,781.1	3,640.3
47 MONTOUR	172.1	6.5	0.0	0.0	230.9	409.5
48 NORTHAMPTON	501.0	1.3	0.0	1.0	1,456.4	1,959.8
49 NORTHUMBERLAND	525.3	5.4	0.0	0.0	892.9	1,423.6
50 PERRY	419.5	64.5	0.0	0.0	600.9	1,084.9
51 PIKE	327.4	64.9	0.0	0.7	251.0	644.1
52 POTTER	444.6	215.7	0.0	0.0	634.0	1,294.2
53 SCHUYLKILL	597.9	29.4	0.0	0.0	1,267.2	1,894.5
54 SNYDER	303.4	53.3	0.0	0.0	510.9	867.6
55 SOMERSET	882.3	85.6	29.9	0.0	1,289.3	2,287.1
56 SULLIVAN	243.8	73.9	0.0	0.0	297.4	615.1
57 SUSQUEHANNA	795.8	0.0	0.0	0.0	1,081.9	1,877.7
58 TIOGA	623.9	207.8	0.0	0.0	1,140.2	1,971.9
59 UNION	280.9	109.8	0.0	0.0	313.3	704.0
60 VENANGO	529.1	10.3	0.0	0.0	827.8	1,367.1
61 WARREN	530.4	151.4	0.0	0.0	611.9	1,293.6
62 WASHINGTON	1,094.0	10.9	21.0	0.0	1,747.1	2,873.0
63 WAYNE	717.1	10.0	0.0	0.0	699.8	1,426.8
64 WESTMORELAND	1,201.7	34.6	54.4	0.0	2,366.1	3,656.7
65 WYOMING	364.9	0.0	0.0	0.0	394.9	759.8
66 YORK	1,132.5	16.6	6.5	0.0	2,612.5	3,768.1
67 PHILADELPHIA	360.5	11.2	0.0	4.8	2,213.4	2,589.8
<b>TOTAL</b>	<b>39,871.7</b>	<b>4,037.3</b>	<b>535.4</b>	<b>10.8</b>	<b>77,126.3</b>	<b>121,581.4</b>

\* Includes State and Federal Agency Miles

## TRAVEL JURISDICTION

COUNTY	PENN- DOT DVMT	OTHER AGENCIES DVMT*	TURNPIKE DVMT	TOLL BRIDGE DVMT	LOCAL MUNICIPAL DVMT	TOTAL DVMT
1 ADAMS	2,154,901	53,697	0	0	260,424	2,469,023
2 ALLEGHENY	17,279,851	6,854	1,144,972	0	7,188,114	25,619,790
3 ARMSTRONG	1,482,656	14,424	0	0	223,166	1,720,246
4 BEAVER	2,967,872	24,143	509,363	0	576,291	4,077,669
5 BEDFORD	1,442,985	67,927	1,163,697	0	345,111	3,019,720
6 BERKS	7,457,946	60,071	202,225	0	1,440,840	9,161,081
7 BLAIR	2,655,432	5,759	0	0	484,425	3,145,617
8 BRADFORD	1,135,577	3,376	0	0	201,660	1,340,613
9 BUCKS	10,589,369	28,727	1,153,605	36,820	2,033,042	13,841,563
10 BUTLER	4,075,647	45,186	95,427	0	613,615	4,829,875
11 CAMBRIA	2,569,104	22,005	0	0	581,239	3,172,348
12 CAMERON	107,131	79,221	0	0	16,152	202,504
13 CARBON	1,223,087	20,700	652,953	0	249,380	2,146,121
14 CENTRE	3,474,356	278,307	0	0	587,506	4,340,169
15 CHESTER	9,261,638	28,337	1,263,906	0	1,571,893	12,125,773
16 CLARION	1,520,742	12,992	0	0	215,699	1,749,433
17 CLEARFIELD	2,593,301	134,218	0	0	362,516	3,090,034
18 CLINTON	1,336,751	385,252	0	0	165,900	1,887,903
19 COLUMBIA	1,580,994	4,706	0	0	254,099	1,839,799
20 CRAWFORD	2,038,991	30,588	0	0	306,973	2,376,552
21 CUMBERLAND	5,829,002	111,098	889,248	0	1,016,386	7,845,733
22 DAUPHIN	6,569,691	16,839	362,765	100	1,471,185	8,420,580
23 DELAWARE	8,765,070	21,800	0	49,950	1,485,900	10,322,720
24 ELK	755,515	166,984	0	0	125,648	1,048,147
25 ERIE	5,070,345	29,196	0	0	1,280,493	6,380,034
26 FAYETTE	2,331,110	14,987	13,407	30	585,449	2,944,983
27 FOREST	162,631	130,381	0	0	25,442	318,455
28 FRANKLIN	3,325,958	94,495	351,171	0	529,796	4,301,420
29 FULTON	709,346	55,242	436,700	0	141,561	1,342,850
30 GREENE	1,084,042	13,831	0	0	174,898	1,272,771
31 HUNTINGDON	976,621	209,776	57,205	0	181,973	1,425,575
32 INDIANA	1,971,747	30,332	0	0	311,908	2,313,987
33 JEFFERSON	1,492,055	9,944	0	0	202,926	1,704,924
34 JUNIATA	659,235	8,133	0	0	90,907	758,275

\* Includes State and Federal Agency DVMT



## TRAVEL JURISDICTION

COUNTY	PENN- DOT DVMT	OTHER AGENCIES DVMT*	TURNPIKE DVMT	TOLL BRIDGE DVMT	LOCAL MUNICIPAL DVMT	TOTAL DVMT
35 LACKAWANNA	4,551,533	22,813	106,668	0	812,537	5,493,551
36 LANCASTER	8,754,220	18,414	969,619	0	1,924,148	11,666,401
37 LAWRENCE	1,539,859	2,762	354,010	0	328,651	2,225,282
38 LEBANON	2,461,620	1,432	162,396	0	689,034	3,314,482
39 LEHIGH	5,612,566	8,082	945,171	0	1,511,080	8,076,899
40 LUZERNE	6,361,077	39,549	257,113	0	1,412,715	8,070,454
41 LYCOMING	2,568,053	224,047	0	0	509,586	3,301,687
42 MCKEAN	788,220	167,670	0	0	133,692	1,089,581
43 MERCER	3,197,567	32,756	0	0	510,697	3,741,020
44 MIFFLIN	902,317	99,405	0	0	152,324	1,154,047
45 MONROE	4,184,588	52,337	0	22,000	364,881	4,623,806
46 MONTGOMERY	11,826,044	51,702	2,994,918	0	4,519,721	19,392,386
47 MONTOUR	714,472	6,650	0	0	101,743	822,865
48 NORTHAMPTON	4,518,046	1,330	0	30,976	986,970	5,537,321
49 NORTHUMBERLAND	1,868,139	5,524	0	0	326,259	2,199,922
50 PERRY	1,329,766	65,984	0	0	182,336	1,578,086
51 PIKE	1,479,182	66,393	0	4,900	305,495	1,855,969
52 POTTER	406,431	220,671	0	0	58,959	686,062
53 SCHUYLKILL	3,336,383	30,035	0	0	466,696	3,833,114
54 SNYDER	1,039,360	50,008	0	0	136,064	1,225,431
55 SOMERSET	1,594,207	87,610	973,080	0	364,905	3,019,802
56 SULLIVAN	169,790	75,630	0	0	25,276	270,697
57 SUSQUEHANNA	1,408,555	0	0	0	208,514	1,617,069
58 TIOGA	1,202,273	212,538	0	0	150,416	1,565,227
59 UNION	1,296,435	112,325	0	0	164,963	1,573,724
60 VENANGO	1,546,615	10,486	0	0	242,463	1,799,564
61 WARREN	875,165	154,831	0	0	170,898	1,200,894
62 WASHINGTON	5,200,665	11,110	202,514	0	742,109	6,156,398
63 WAYNE	1,141,790	10,179	0	0	305,791	1,457,760
64 WESTMORELAND	6,281,585	35,437	1,767,674	0	1,544,058	9,628,754
65 WYOMING	669,866	0	0	0	98,710	768,575
66 YORK	7,509,813	16,982	196,831	0	1,334,092	9,057,717
67 PHILADELPHIA	11,441,796	11,458	0	440,150	4,484,629	16,378,032
<b>TOTAL</b>	<b>224,428,698</b>	<b>4,125,677</b>	<b>17,226,638</b>	<b>584,926</b>	<b>50,572,927</b>	<b>296,938,866</b>

\* Includes State and Federal Agency DVMT

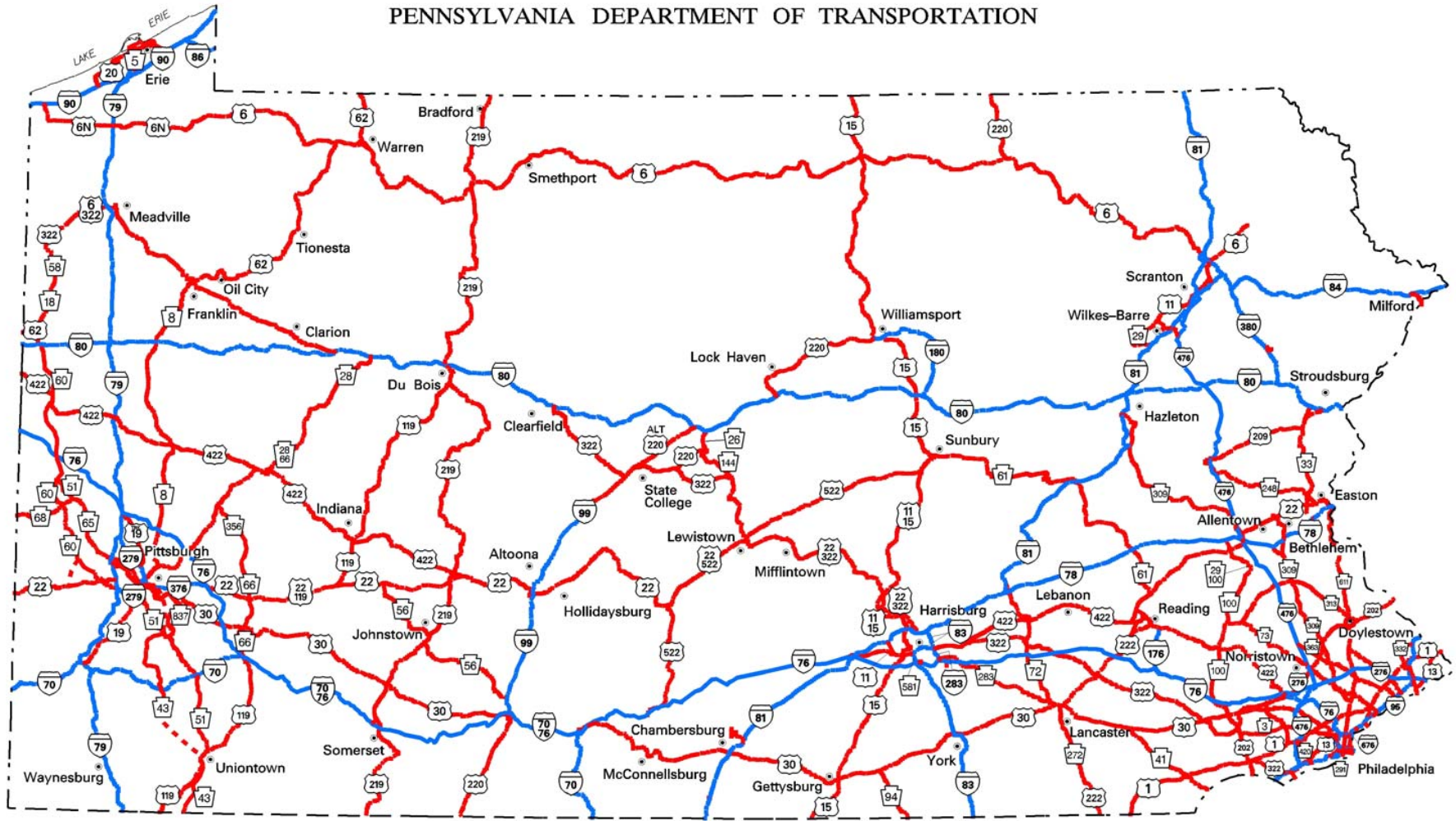
## MILEAGE AND TRAVEL NATIONAL HIGHWAY SYSTEM

COUNTY	LINEAR MILES				TOTAL	
	STATE	TURN-PIKE	TOLL BRIDGES	LOCAL MUNICIPAL	LINEAR MILES	DVMT
1 ADAMS	58.3	0.0	0.0	0.0	58.3	864,827
2 ALLEGHENY	257.5	34.1	0.0	8.7	300.3	11,420,399
3 ARMSTRONG	55.4	0.0	0.0	0.0	55.4	591,773
4 BEAVER	47.9	24.4	0.0	0.0	72.3	1,458,178
5 BEDFORD	76.8	35.3	0.0	0.0	112.1	1,713,784
6 BERKS	150.3	4.8	0.0	0.0	155.1	4,591,087
7 BLAIR	68.3	0.0	0.0	0.2	68.5	1,080,536
8 BRADFORD	65.3	0.0	0.0	0.0	65.3	382,186
9 BUCKS	163.7	19.4	1.3	1.1	185.4	6,374,081
10 BUTLER	99.6	4.4	0.0	0.0	104.0	1,994,096
11 CAMBRIA	86.6	0.0	0.0	0.3	86.9	1,149,769
12 CAMERON	0.0	0.0	0.0	0.0	0.0	0
13 CARBON	27.8	26.9	0.0	0.0	54.7	1,158,757
14 CENTRE	136.0	0.0	0.0	0.0	136.0	2,101,110
15 CHESTER	160.4	26.0	0.0	0.5	186.9	5,898,487
16 CLARION	61.0	0.0	0.0	0.0	61.0	912,949
17 CLEARFIELD	102.4	0.0	0.0	0.0	102.4	1,440,081
18 CLINTON	40.8	0.0	0.0	0.0	40.8	904,337
19 COLUMBIA	23.8	0.0	0.0	0.0	23.8	570,858
20 CRAWFORD	60.4	0.0	0.0	0.0	60.4	833,433
21 CUMBERLAND	76.5	37.9	0.0	0.0	114.3	4,526,666
22 DAUPHIN	77.9	12.9	0.0	7.9	98.6	4,345,083
23 DELAWARE	99.2	0.0	1.4	1.4	102.0	5,442,101
24 ELK	35.7	0.0	0.0	0.0	35.7	198,481
25 ERIE	157.8	0.0	0.0	4.2	162.0	2,870,649
26 FAYETTE	54.0	6.2	0.0	0.0	60.1	739,629
27 FOREST	14.1	0.0	0.0	0.0	14.1	29,637
28 FRANKLIN	60.3	14.9	0.0	0.0	75.2	1,948,995
29 FULTON	43.9	19.2	0.0	0.0	63.1	891,668
30 GREENE	21.9	0.0	0.0	0.0	21.9	445,138
31 HUNTINGDON	47.9	2.5	0.0	0.0	50.3	412,797
32 INDIANA	87.1	0.0	0.0	0.0	87.1	874,117
33 JEFFERSON	60.1	0.0	0.0	0.0	60.1	888,374
34 JUNIATA	22.0	0.0	0.0	0.0	22.0	304,993

## MILEAGE AND TRAVEL NATIONAL HIGHWAY SYSTEM

COUNTY	LINEAR MILES				TOTAL	
	STATE	TURN-PIKE	TOLL BRIDGES	LOCAL MUNICIPAL	LINEAR MILES	DVMT
35 LACKAWANNA	86.2	11.9	0.0	0.1	98.2	2,755,507
36 LANCASTER	137.2	30.6	0.0	0.0	167.8	4,870,253
37 LAWRENCE	37.1	17.4	0.0	0.0	54.5	895,064
38 LEBANON	73.7	5.9	0.0	8.3	87.8	1,735,455
39 LEHIGH	83.3	25.7	0.0	1.2	110.2	3,873,949
40 LUZERNE	104.7	20.1	0.0	1.4	126.1	3,564,382
41 LYCOMING	70.5	0.0	0.0	0.0	70.5	1,399,706
42 MCKEAN	79.6	0.0	0.0	0.0	79.6	340,647
43 MERCER	87.9	0.0	0.0	0.0	87.9	1,779,317
44 MIFFLIN	56.2	0.0	0.0	0.0	56.2	481,772
45 MONROE	71.5	0.0	0.4	0.0	71.9	2,145,782
46 MONTGOMERY	157.0	39.2	0.0	12.1	208.3	9,335,859
47 MONTOUR	11.7	0.0	0.0	0.0	11.7	360,006
48 NORTHAMPTON	75.5	0.0	0.6	0.8	76.9	2,368,957
49 NORTHUMBERLAND	41.7	0.0	0.0	0.0	41.7	625,800
50 PERRY	42.7	0.0	0.0	0.0	42.7	774,259
51 PIKE	38.2	0.0	0.4	0.4	39.0	762,877
52 POTTER	36.5	0.0	0.0	0.0	36.5	148,812
53 SCHUYLKILL	94.7	0.0	0.0	0.0	94.7	1,878,626
54 SNYDER	48.9	0.0	0.0	0.0	48.9	652,862
55 SOMERSET	86.0	29.9	0.0	0.0	115.8	1,541,756
56 SULLIVAN	0.0	0.0	0.0	0.0	0.0	0
57 SUSQUEHANNA	27.2	0.0	0.0	0.0	27.2	711,938
58 TIOGA	80.5	0.0	0.0	0.0	80.5	599,505
59 UNION	35.5	0.0	0.0	0.0	35.5	879,462
60 VENANGO	83.0	0.0	0.0	0.0	83.0	900,835
61 WARREN	79.4	0.0	0.0	0.0	79.4	439,152
62 WASHINGTON	101.8	19.5	0.0	0.0	121.3	2,989,051
63 WAYNE	6.6	0.0	0.0	0.0	6.6	135,358
64 WESTMORELAND	126.3	54.4	0.0	0.0	180.7	4,506,644
65 WYOMING	28.1	0.0	0.0	0.0	28.1	231,238
66 YORK	87.7	6.5	0.0	0.0	94.2	3,709,888
67 PHILADELPHIA	118.8	0.0	4.8	11.8	135.4	8,233,826
<b>TOTAL</b>	<b>4,896.5</b>	<b>529.4</b>	<b>8.8</b>	<b>60.3</b>	<b>5,494.9</b>	<b>134,987,602</b>

# NATIONAL HIGHWAY SYSTEM PENNSYLVANIA DEPARTMENT OF TRANSPORTATION



— INTERSTATE HIGHWAYS

— OTHER NHS ROUTES

## MILEAGE FEDERAL AID SYSTEM

COUNTY	FEDERAL AID LINEAR MILES		
	STATE OWNED	LOCAL OWNED	TOTAL
1 ADAMS	249.0	6.5	255.5
2 ALLEGHENY	979.4	576.7	1,556.1
3 ARMSTRONG	345.4	11.9	357.3
4 BEAVER	376.0	27.2	403.1
5 BEDFORD	322.7	0.0	322.7
6 BERKS	560.1	132.0	692.1
7 BLAIR	320.0	32.0	352.0
8 BRADFORD	343.2	8.7	351.9
9 BUCKS	801.2	93.1	894.3
10 BUTLER	465.8	58.0	523.8
11 CAMBRIA	444.7	25.9	470.6
12 CAMERON	83.4	0.0	83.4
13 CARBON	185.0	9.7	194.7
14 CENTRE	430.9	31.6	462.5
15 CHESTER	757.0	136.7	893.7
16 CLARION	253.5	3.4	256.9
17 CLEARFIELD	442.9	7.7	450.7
18 CLINTON	227.6	11.4	239.0
19 COLUMBIA	239.1	17.6	256.7
20 CRAWFORD	547.6	11.1	558.6
21 CUMBERLAND	362.2	53.2	415.4
22 DAUPHIN	398.1	122.5	520.6
23 DELAWARE	418.8	80.3	499.1
24 ELK	191.4	3.6	195.0
25 ERIE	531.5	124.7	656.2
26 FAYETTE	495.2	39.3	534.4
27 FOREST	135.8	0.0	135.8
28 FRANKLIN	324.9	26.0	350.9
29 FULTON	137.1	0.0	137.1
30 GREENE	300.0	4.4	304.4
31 HUNTINGDON	288.3	12.3	300.6
32 INDIANA	414.8	18.4	433.2
33 JEFFERSON	278.3	4.3	282.5
34 JUNIATA	137.5	0.0	137.5
35 LACKWANNA	387.8	52.9	440.7

## MILEAGE FEDERAL AID SYSTEM

COUNTY	FEDERAL AID LINEAR MILES		
	STATE OWNED	LOCAL OWNED	TOTAL
36 LANCASTER	683.3	107.8	791.0
37 LAWRENCE	243.9	28.6	272.5
38 LEBANON	233.5	43.5	277.0
39 LEHIGH	338.1	110.8	448.9
40 LUZERNE	566.2	118.6	684.8
41 LYCOMING	440.7	52.0	492.7
42 MCKEAN	313.3	6.5	319.8
43 MERCER	449.9	43.0	492.8
44 MIFFLIN	146.4	10.5	156.9
45 MONROE	320.0	4.0	324.0
46 MONTGOMERY	689.1	310.0	999.1
47 MONTOUR	70.4	5.8	76.2
48 NORTHAMPTON	363.5	86.5	450.0
49 NORTHUMBERLAND	312.5	33.7	346.2
50 PERRY	227.2	1.2	228.4
51 PIKE	199.0	19.7	218.7
52 POTTER	236.6	0.0	236.6
53 SCHUYLKILL	430.9	28.0	458.9
54 SNYDER	136.1	3.1	139.2
55 SOMERSET	404.5	6.8	411.3
56 SULLIVAN	124.2	0.0	124.2
57 SUSQUEHANNA	308.1	0.0	308.1
58 TIOGA	314.2	0.0	314.2
59 UNION	135.3	11.6	147.0
60 VENANGO	377.1	20.8	398.0
61 WARREN	276.6	8.7	285.3
62 WASHINGTON	621.9	25.9	647.8
63 WAYNE	243.8	1.8	245.6
64 WESTMORELAND	762.4	110.1	872.4
65 WYOMING	137.6	0.0	137.6
66 YORK	653.2	85.7	738.9
67 PHILADELPHIA	358.8	293.4	652.1
<b>TOTAL</b>	<b>24,294.0</b>	<b>3,321.1</b>	<b>27,615.1</b>
<b>TURNPIKE</b>			<b>535.4</b>
<b>TOLL BRIDGES</b>			<b>9.2</b>
<b>GRAND TOTAL</b>			<b>28,159.7</b>

## MILEAGE HIGHWAY FUNCTIONAL CLASSIFICATION

COUNTY	FEDERAL AID LINEAR MILES					NON FEDERAL AID LINEAR MILES		TOTAL LINEAR MILES
	INTER-STATE	OTHER FRWY/EXPWY	OTHER PRINC ARTER	MINOR ARTER	MAJOR COLLEC	MINOR COLLEC	LOCAL	
1 ADAMS	0.0	0.0	63.8	110.4	81.3	156.4	1,004.2	1,416.0
2 ALLEGHENY	93.8	72.5	364.0	595.7	468.9	20.7	4,185.2	5,800.6
3 ARMSTRONG	0.0	6.2	54.0	116.8	180.3	147.8	1,315.4	1,820.6
4 BEAVER	16.4	25.8	85.2	132.4	167.7	66.8	1,192.2	1,686.5
5 BEDFORD	53.2	0.0	58.4	73.5	172.8	190.1	1,265.0	1,813.0
6 BERKS	51.5	22.9	113.4	148.7	360.4	184.2	2,421.5	3,302.6
7 BLAIR	37.1	0.0	66.1	64.7	184.1	70.8	804.1	1,226.9
8 BRADFORD	0.0	4.1	60.9	121.9	165.0	216.3	1,927.3	2,495.4
9 BUCKS	37.3	23.9	240.9	256.6	356.2	121.5	2,414.3	3,450.8
10 BUTLER	33.7	7.9	79.2	157.7	249.7	118.0	1,648.1	2,294.3
11 CAMBRIA	0.0	11.5	100.6	107.3	251.2	132.2	1,121.8	1,724.6
12 CAMERON	0.0	0.0	0.0	44.7	38.7	22.4	206.6	312.4
13 CARBON	37.1	3.2	19.4	42.4	119.4	51.1	447.4	720.1
14 CENTRE	32.8	13.1	119.7	103.2	193.8	83.8	1,189.6	1,735.9
15 CHESTER	26.0	64.1	132.6	244.8	452.2	104.2	2,510.3	3,534.2
16 CLARION	28.1	0.0	38.4	126.0	64.4	127.7	1,045.8	1,430.4
17 CLEARFIELD	41.8	0.0	70.3	138.6	199.9	173.1	1,443.5	2,067.3
18 CLINTON	24.0	7.1	10.1	90.7	107.1	42.4	801.3	1,082.7
19 COLUMBIA	19.1	0.0	23.2	87.1	127.2	90.6	1,045.5	1,392.9
20 CRAWFORD	27.1	0.0	38.0	184.8	308.7	217.1	1,663.2	2,439.0
21 CUMBERLAND	79.5	15.0	40.3	112.7	205.8	102.8	1,387.0	1,943.1
22 DAUPHIN	41.4	16.0	77.4	176.6	222.1	59.4	1,293.3	1,886.2
23 DELAWARE	25.5	4.8	137.1	132.9	200.0	0.0	1,312.4	1,812.9
24 ELK	0.0	0.0	35.7	50.3	109.0	66.6	568.3	829.9
25 ERIE	73.0	0.0	118.6	237.1	227.6	165.9	1,763.8	2,586.0
26 FAYETTE	0.0	21.8	98.1	112.0	308.7	155.1	1,385.7	2,081.4
27 FOREST	0.0	0.0	14.2	45.2	76.3	38.0	318.0	491.8
28 FRANKLIN	40.7	0.0	41.0	124.3	159.8	147.4	1,237.5	1,750.6
29 FULTON	38.9	0.0	24.2	48.7	44.5	68.8	513.4	738.4
30 GREENE	21.9	0.0	12.9	57.4	212.2	81.2	1,130.7	1,516.3
31 HUNTINGDON	2.5	0.0	52.3	87.3	161.1	101.9	1,036.4	1,441.4
32 INDIANA	0.0	5.9	90.6	96.4	240.3	174.6	1,483.1	2,090.9
33 JEFFERSON	23.8	0.0	35.8	110.7	112.2	158.6	965.4	1,406.6
34 JUNIATA	0.0	0.0	22.0	46.8	68.7	89.7	508.3	735.4

## MILEAGE HIGHWAY FUNCTIONAL CLASSIFICATION

COUNTY	FEDERAL AID LINEAR MILES					NON FEDERAL AID LINEAR MILES		TOTAL LINEAR MILES
	INTER-STATE	OTHER FRWY/EXPWY	OTHER PRINC ARTER	MINOR ARTER	MAJOR COLLEC	MINOR COLLEC	LOCAL	
35 LACKAWANNA	62.7	20.6	59.6	112.2	197.6	71.4	1,073.7	1,597.7
36 LANCASTER	30.6	32.1	121.3	288.6	349.1	227.1	2,828.6	3,877.4
37 LAWRENCE	13.4	1.7	59.6	81.9	133.3	60.2	846.8	1,196.9
38 LEBANON	29.5	0.0	54.4	47.3	151.6	81.3	823.7	1,187.9
39 LEHIGH	44.9	15.2	115.6	85.8	213.1	59.4	1,494.5	2,028.5
40 LUZERNE	84.6	10.9	79.0	247.4	282.9	124.0	1,846.5	2,675.3
41 LYCOMING	19.5	5.1	59.1	162.6	246.4	165.2	1,532.9	2,190.7
42 MCKEAN	0.0	3.5	76.1	76.4	163.8	29.6	675.9	1,025.2
43 MERCER	53.8	5.8	39.1	147.5	246.7	140.4	1,409.1	2,042.4
44 MIFFLIN	0.0	8.8	54.4	31.7	62.0	64.3	494.0	715.3
45 MONROE	41.6	0.0	29.0	134.7	119.0	80.9	1,172.7	1,577.9
46 MONTGOMERY	57.2	29.9	296.9	258.5	395.8	8.0	2,594.0	3,640.3
47 MONTOUR	11.7	0.0	9.8	23.2	31.5	29.9	303.4	409.5
48 NORTHAMPTON	12.5	17.5	75.9	138.8	206.3	46.3	1,462.4	1,959.8
49 NORTHUMBERLAND	14.8	5.3	53.3	114.1	158.6	91.4	986.1	1,423.6
50 PERRY	0.0	0.0	43.2	79.3	105.9	73.1	783.4	1,084.9
51 PIKE	35.4	0.0	5.1	94.2	84.4	65.7	359.3	644.1
52 POTTER	0.0	0.0	36.5	88.8	111.2	134.4	923.2	1,294.2
53 SCHUYLKILL	42.9	0.0	52.2	161.1	202.7	132.3	1,303.3	1,894.5
54 SNYDER	0.0	2.5	50.1	36.7	49.9	80.6	647.8	867.6
55 SOMERSET	29.9	0.5	100.3	115.4	195.1	237.0	1,609.0	2,287.1
56 SULLIVAN	0.0	0.0	0.0	58.3	65.9	38.0	453.0	615.1
57 SUSQUEHANNA	27.2	0.0	0.0	99.4	181.4	181.2	1,388.5	1,877.7
58 TIOGA	0.0	0.0	80.5	95.0	138.7	162.0	1,495.7	1,971.9
59 UNION	16.2	0.0	22.5	27.4	80.9	78.0	479.0	704.0
60 VENANGO	14.7	0.1	68.7	90.1	224.3	99.6	869.6	1,367.1
61 WARREN	0.0	0.0	83.3	85.8	116.2	139.7	868.6	1,293.6
62 WASHINGTON	64.7	15.3	73.1	211.5	304.1	207.6	1,996.6	2,873.0
63 WAYNE	6.6	0.0	0.0	126.3	112.8	164.1	1,017.0	1,426.8
64 WESTMORELAND	57.7	31.8	139.7	293.7	403.9	159.4	2,570.5	3,656.7
65 WYOMING	0.0	0.0	30.1	55.5	52.0	66.6	555.6	759.8
66 YORK	46.0	9.9	78.9	213.4	397.0	209.5	2,813.3	3,768.1
67 PHILADELPHIA	34.6	7.1	219.1	226.8	169.2	0.0	1,933.0	2,589.8
<b>TOTAL</b>	<b>1,758.8</b>	<b>549.3</b>	<b>4,804.7</b>	<b>8,496.0</b>	<b>12,551.0</b>	<b>7,255.6</b>	<b>86,166.2</b>	<b>121,581.4</b>



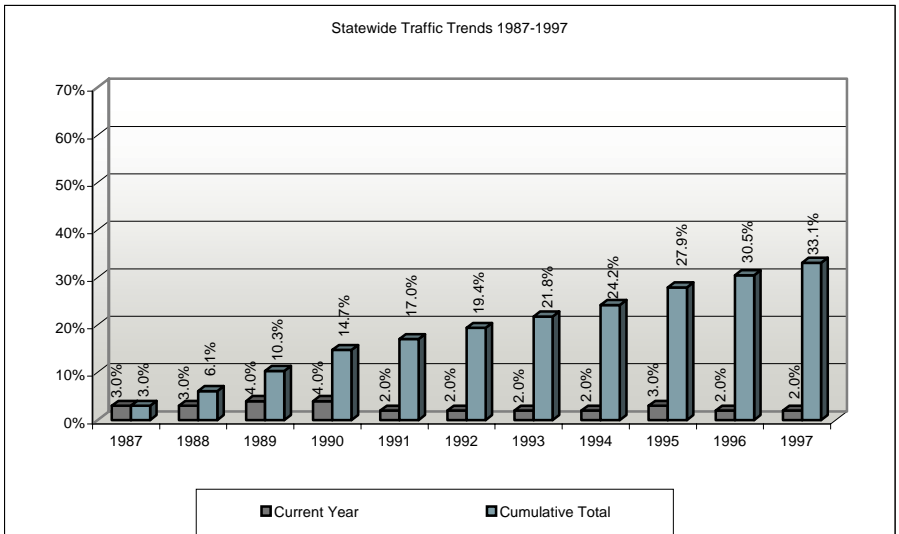
## TRAVEL HIGHWAY FUNCTIONAL CLASSIFICATION

COUNTY	FEDERAL AID DVMT					NON FEDERAL AID DVMT		TOTAL LINEAR DVMT
	INTER-STATE	OTHER FREEWY/ EXPWY	OTHER PRINC ARTER	MINOR ARTER	MAJOR COLLEC	MINOR COLLEC	LOCAL	
1 ADAMS	0	0	920,789	761,436	211,559	189,212	386,026	2,469,023
2 ALLEGHENY	5,706,487	2,491,365	6,797,028	5,094,800	2,234,769	14,025	3,281,317	25,619,790
3 ARMSTRONG	0	98,441	553,376	517,676	201,578	76,674	272,501	1,720,246
4 BEAVER	355,683	652,430	1,031,450	830,666	517,584	58,902	630,954	4,077,669
5 BEDFORD	1,411,843	0	296,470	418,844	294,107	81,477	516,979	3,019,720
6 BERKS	1,752,466	1,119,472	2,167,827	1,335,673	1,456,608	267,301	1,061,733	9,161,081
7 BLAIR	723,885	0	795,969	578,845	556,318	82,042	408,558	3,145,617
8 BRADFORD	0	37,206	343,249	397,546	204,744	90,761	267,107	1,340,613
9 BUCKS	2,513,886	1,091,546	4,448,843	2,250,144	1,934,026	153,773	1,449,346	13,841,563
10 BUTLER	1,001,296	160,080	1,128,736	1,219,265	614,296	126,814	579,388	4,829,875
11 CAMBRIA	0	229,356	1,129,495	524,180	630,453	121,250	537,614	3,172,348
12 CAMERON	0	0	0	68,145	27,553	9,058	97,747	202,504
13 CARBON	943,094	59,312	220,382	272,248	327,181	61,801	262,101	2,146,121
14 CENTRE	857,007	252,627	1,342,094	616,662	478,080	56,844	736,855	4,340,169
15 CHESTER	1,263,906	2,718,357	2,385,531	2,478,306	1,865,313	161,078	1,253,284	12,125,773
16 CLARION	727,390	0	240,523	413,302	72,955	53,463	241,800	1,749,433
17 CLEARFIELD	1,135,887	0	381,590	659,968	275,544	95,131	541,913	3,090,034
18 CLINTON	658,309	108,724	142,172	230,623	175,018	22,903	550,155	1,887,903
19 COLUMBIA	559,844	0	269,771	391,463	273,146	62,425	283,151	1,839,799
20 CRAWFORD	593,606	0	253,358	648,206	425,111	104,783	351,489	2,376,552
21 CUMBERLAND	3,325,086	769,054	743,628	981,097	916,361	148,512	961,995	7,845,733
22 DAUPHIN	2,485,343	720,661	1,792,645	1,670,683	720,374	61,279	969,595	8,420,580
23 DELAWARE	3,407,605	227,521	2,961,817	1,524,292	1,056,572	0	1,144,912	10,322,720
24 ELK	0	0	198,481	257,629	213,514	27,905	350,619	1,048,147
25 ERIE	1,982,941	0	1,250,868	1,598,794	683,779	136,461	727,192	6,380,034
26 FAYETTE	0	275,044	1,034,042	409,929	558,576	98,897	568,495	2,944,983
27 FOREST	0	0	29,778	99,203	24,605	5,712	159,156	318,455
28 FRANKLIN	1,580,192	0	450,774	763,955	595,325	245,844	665,330	4,301,420
29 FULTON	818,346	0	73,322	151,352	27,301	24,271	248,258	1,342,850
30 GREENE	445,138	0	105,865	249,452	219,422	24,666	228,228	1,272,771
31 HUNTINGDON	57,205	0	377,652	288,810	206,346	65,095	430,467	1,425,575
32 INDIANA	0	49,783	911,550	484,375	399,212	92,952	376,115	2,313,987
33 JEFFERSON	644,585	0	240,212	393,942	112,556	67,548	246,081	1,704,924
34 JUNIATA	0	0	304,993	134,936	94,888	57,892	165,565	758,275

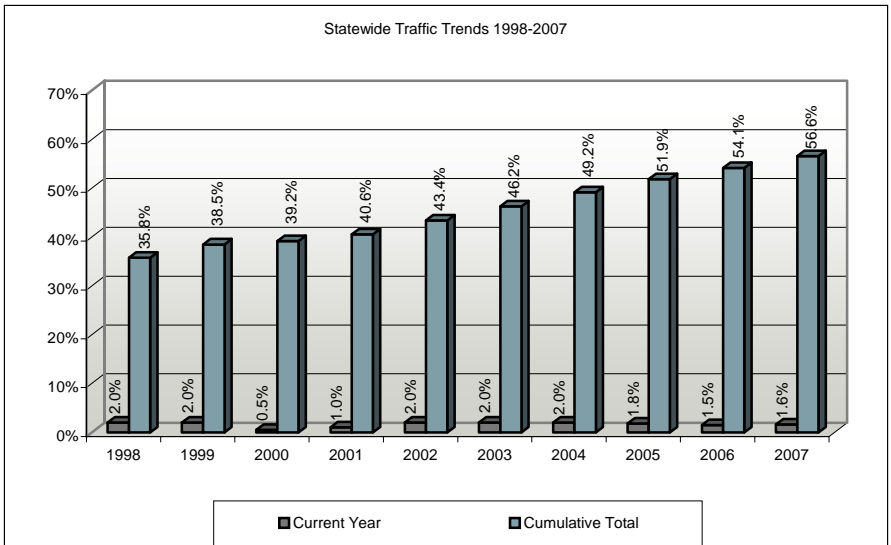
## TRAVEL HIGHWAY FUNCTIONAL CLASSIFICATION

COUNTY	FEDERAL AID DVMT					NON FEDERAL AID DVMT		TOTAL LINEAR DVMT
	INTER-STATE	OTHER FREEWAY/ EXPWY	OTHER PRINC ARTER	MINOR ARTER	MAJOR COLLEC	MINOR COLLEC	LOCAL	
35 LACKAWANNA	2,154,899	377,997	895,838	771,706	561,715	76,472	654,923	5,493,551
36 LANCASTER	969,619	1,790,632	2,340,810	3,123,130	1,536,249	372,926	1,533,036	11,666,401
37 LAWRENCE	280,522	30,932	769,199	428,457	404,662	39,857	271,651	2,225,282
38 LEBANON	972,523	0	746,863	360,581	620,253	149,802	464,459	3,314,482
39 LEHIGH	1,951,870	1,004,894	1,995,181	1,165,988	844,620	98,782	1,015,565	8,076,899
40 LUZERNE	2,779,500	404,687	1,196,506	1,782,844	763,479	89,871	1,063,566	8,070,454
41 LYCOMING	618,065	116,795	773,819	758,751	318,844	80,756	634,656	3,301,687
42 MCKEAN	0	39,976	300,670	177,705	246,987	11,307	312,936	1,089,581
43 MERCER	1,382,375	87,974	426,636	752,996	485,541	87,796	517,702	3,741,020
44 MIFFLIN	0	143,792	407,075	192,083	96,412	78,603	236,081	1,154,047
45 MONROE	1,562,177	0	592,048	1,299,004	422,208	192,734	555,635	4,623,806
46 MONTGOMERY	5,332,953	1,703,550	4,971,993	3,064,342	2,197,783	8,605	2,113,160	19,392,386
47 MONTOUR	360,006	0	125,639	134,870	57,108	15,879	129,363	822,865
48 NORTHAMPTON	648,673	990,437	1,079,475	1,245,630	858,920	92,307	621,880	5,537,321
49 NORTHUMBERLAND	370,294	75,375	552,330	533,059	293,442	67,294	308,128	2,199,922
50 PERRY	0	0	779,695	312,696	144,707	53,065	287,923	1,578,086
51 PIKE	726,855	0	59,057	425,456	239,517	88,862	316,222	1,855,969
52 POTTER	0	0	148,812	117,669	66,351	52,052	301,177	686,062
53 SCHUYLKILL	1,143,682	0	738,327	969,251	399,735	128,853	453,266	3,833,114
54 SNYDER	0	45,090	646,383	168,771	98,506	58,707	207,975	1,225,431
55 SOMERSET	973,080	6,520	675,369	429,218	297,421	134,635	503,559	3,019,802
56 SULLIVAN	0	0	0	94,104	53,299	8,505	114,788	270,697
57 SUSQUEHANNA	711,938	0	0	248,150	255,617	107,977	293,387	1,617,069
58 TIOGA	0	0	599,505	309,312	161,998	84,377	410,036	1,565,227
59 UNION	443,274	0	467,324	157,803	150,934	69,647	284,742	1,573,724
60 VENANGO	415,891	941	484,866	350,011	292,968	25,561	229,325	1,799,564
61 WARREN	0	0	477,262	199,742	131,185	50,817	341,887	1,200,894
62 WASHINGTON	2,194,706	165,921	906,589	1,229,769	666,371	148,377	844,664	6,156,398
63 WAYNE	135,358	0	0	594,825	162,623	121,476	443,478	1,457,760
64 WESTMORELAND	2,226,905	655,190	2,228,640	1,821,932	1,262,571	129,991	1,303,525	9,628,754
65 WYOMING	0	0	241,598	207,520	104,427	51,832	163,199	768,575
66 YORK	2,308,987	367,109	1,694,309	1,734,384	1,512,144	295,374	1,145,411	9,057,717
67 PHILADELPHIA	5,067,596	605,637	4,778,299	2,726,299	1,294,910	0	1,905,290	16,378,032
<b>TOTAL</b>	<b>70,682,779</b>	<b>19,674,427</b>	<b>67,424,396</b>	<b>56,604,507</b>	<b>35,608,285</b>	<b>6,019,848</b>	<b>40,924,624</b>	<b>296,938,866</b>

# STATEWIDE TRAFFIC TRENDS 1987-1997



# STATEWIDE TRAFFIC TRENDS 1998-2007



## MILEAGE - PENNDOT SYSTEM MAINTENANCE FUNCTIONAL CLASSIFICATION

COUNTY	LINEAR MILES BY MAINTENANCE FUNCTIONAL CLASS						RAMPS
	"A"	"B"	"C"	"D"	"E"	TOTAL	"F"
1 ADAMS	0.0	63.8	109.8	231.7	138.3	543.6	4.9
2 ALLEGHENY	63.7	364.2	333.1	239.2	180.4	1,180.5	91.4
3 ARMSTRONG	0.0	60.2	116.3	316.8	164.0	657.3	9.7
4 BEAVER	0.0	103.0	129.3	210.5	161.4	604.1	10.5
5 BEDFORD	17.9	58.4	73.5	346.1	300.7	796.6	10.8
6 BERKS	46.7	136.3	132.2	420.9	144.4	880.5	30.7
7 BLAIR	37.1	64.4	60.3	219.4	82.4	463.6	20.1
8 BRADFORD	0.0	65.0	119.2	365.1	347.2	896.5	3.5
9 BUCKS	17.9	263.6	243.5	394.1	41.1	960.3	33.2
10 BUTLER	29.3	87.1	151.7	313.6	72.5	654.3	16.1
11 CAMBRIA	0.0	111.0	101.9	363.4	96.2	672.5	17.2
12 CAMERON	0.0	0.0	44.7	61.1	6.8	112.6	0.1
13 CARBON	10.2	22.7	42.3	160.9	32.5	268.7	2.9
14 CENTRE	32.8	132.8	97.0	252.1	73.8	588.5	23.5
15 CHESTER	0.0	196.4	232.3	428.8	164.0	1,021.5	30.0
16 CLARION	28.1	38.4	125.4	182.8	94.3	469.0	7.4
17 CLEARFIELD	41.8	70.3	136.1	367.7	186.7	802.6	8.4
18 CLINTON	24.0	17.2	90.7	135.1	29.1	296.1	8.9
19 COLUMBIA	19.1	23.2	82.2	205.3	162.7	492.5	7.5
20 CRAWFORD	27.1	38.0	181.7	515.3	147.8	909.9	4.9
21 CUMBERLAND	41.6	55.2	109.1	258.4	92.4	556.8	26.0
22 DAUPHIN	28.5	86.7	163.9	178.4	99.9	557.3	40.3
23 DELAWARE	25.5	139.7	120.8	132.8	29.1	447.9	21.7
24 ELK	0.0	35.7	50.3	171.8	35.4	293.1	1.0
25 ERIE	73.0	113.0	192.5	319.0	84.3	781.7	19.9
26 FAYETTE	0.0	113.8	108.8	423.8	112.2	758.6	10.3
27 FOREST	0.0	14.2	45.2	114.4	27.5	201.3	0.1
28 FRANKLIN	25.8	41.0	121.1	282.3	143.8	613.9	7.5
29 FULTON	19.8	24.2	48.7	105.8	143.8	342.2	3.0
30 GREENE	21.9	12.9	57.4	284.8	196.7	573.7	3.2
31 HUNTINGDON	0.0	51.7	84.6	244.1	218.1	598.5	0.9
32 INDIANA	0.0	96.4	95.6	397.3	209.4	798.7	14.5
33 JEFFERSON	23.8	35.8	109.9	267.4	118.8	555.7	3.2
34 JUNIATA	0.0	22.0	46.8	158.4	127.8	354.9	4.6

## MILEAGE - PENNDOT SYSTEM MAINTENANCE FUNCTIONAL CLASSIFICATION

COUNTY	LINEAR MILES BY MAINTENANCE FUNCTIONAL CLASS						RAMPS
	"A"	"B"	"C"	"D"	"E"	TOTAL	"F"
35 LACKAWANNA	50.8	75.5	93.5	239.4	98.0	557.1	34.0
36 LANCASTER	0.0	151.2	276.0	461.5	158.1	1,046.9	16.9
37 LAWRENCE	5.4	51.1	77.5	167.8	83.6	385.3	8.8
38 LEBANON	23.7	46.1	37.0	201.2	61.8	369.7	6.6
39 LEHIGH	19.2	122.7	72.5	183.0	138.4	535.8	21.6
40 LUZERNE	64.5	82.1	221.8	321.8	162.7	852.8	30.4
41 LYCOMING	19.5	61.3	154.0	364.6	117.1	716.5	17.9
42 MCKEAN	0.0	79.6	72.4	190.9	38.8	381.7	3.3
43 MERCER	53.8	43.5	138.6	354.4	153.5	743.8	12.2
44 MIFFLIN	0.0	63.2	31.3	116.2	29.0	239.7	7.2
45 MONROE	41.2	29.0	133.3	196.1	119.4	519.0	18.6
46 MONTGOMERY	18.0	269.9	213.2	196.0	72.3	769.4	31.6
47 MONTOUR	11.7	9.8	22.4	56.5	71.8	172.1	2.3
48 NORTHAMPTON	12.2	90.1	125.5	181.9	91.2	501.0	18.0
49 NORTHUMBERLAND	14.8	57.5	107.1	224.0	121.9	525.3	8.2
50 PERRY	0.0	43.2	79.3	177.8	119.2	419.5	3.4
51 PIKE	35.4	4.3	74.9	149.8	63.0	327.4	5.3
52 POTTER	0.0	36.5	88.8	245.6	73.6	444.6	0.3
53 SCHUYLKILL	42.9	52.2	154.4	313.7	34.8	597.9	18.7
54 SNYDER	0.0	52.5	34.2	127.7	88.9	303.4	4.6
55 SOMERSET	0.0	100.8	113.0	427.7	240.8	882.3	8.5
56 SULLIVAN	0.0	0.0	58.3	103.9	81.7	243.8	0.1
57 SUSQUEHANNA	27.2	0.0	99.4	362.6	306.6	795.8	4.8
58 TIOGA	0.0	80.5	95.0	297.3	151.1	623.9	7.8
59 UNION	16.2	22.5	25.8	148.8	67.6	280.9	4.1
60 VENANGO	14.7	68.6	87.7	305.7	52.4	529.1	4.4
61 WARREN	0.0	82.4	83.6	250.4	114.0	530.4	2.7
62 WASHINGTON	64.7	67.3	209.1	488.4	264.6	1,094.0	23.6
63 WAYNE	6.6	0.0	125.8	275.5	309.2	717.1	1.1
64 WESTMORELAND	16.7	156.8	267.6	480.4	280.1	1,201.7	22.4
65 WYOMING	0.0	30.1	55.5	118.7	160.7	364.9	1.0
66 YORK	39.6	80.5	196.8	542.0	273.7	1,132.5	18.0
67 PHILADELPHIA	31.7	196.5	104.7	25.8	1.8	360.5	41.3
<b>TOTAL</b>	<b>1,286.2</b>	<b>5,065.5</b>	<b>7,687.9</b>	<b>17,365.5</b>	<b>8,466.5</b>	<b>39,871.7</b>	<b>908.2</b>

## MILEAGE AND TRAVEL PENNDOT SYSTEM

COUNTY	TOTAL			
	LINEAR MILES	LANE MILES	12' EQUIV *	DVMT
1 ADAMS	543.6	1,144.4	1,057.3	2,154,901
2 ALLEGHENY	1,180.5	3,075.6	2,991.7	17,279,851
3 ARMSTRONG	657.3	1,378.3	1,200.8	1,482,656
4 BEAVER	604.1	1,342.7	1,221.5	2,967,872
5 BEDFORD	796.6	1,681.9	1,421.9	1,442,985
6 BERKS	880.5	2,029.7	1,950.1	7,457,946
7 BLAIR	463.6	1,088.3	1,044.2	2,655,432
8 BRADFORD	896.5	1,810.3	1,471.7	1,135,577
9 BUCKS	960.3	2,241.8	2,251.4	10,589,369
10 BUTLER	654.3	1,476.0	1,416.0	4,075,647
11 CAMBRIA	672.5	1,480.2	1,370.2	2,569,104
12 CAMERON	112.6	225.3	197.8	107,131
13 CARBON	268.7	576.6	539.6	1,223,087
14 CENTRE	588.5	1,346.9	1,262.9	3,474,356
15 CHESTER	1,021.5	2,300.4	2,211.3	9,261,638
16 CLARION	469.0	997.2	881.8	1,520,742
17 CLEARFIELD	802.6	1,719.7	1,536.2	2,593,301
18 CLINTON	296.1	674.2	620.4	1,336,751
19 COLUMBIA	492.5	1,047.4	941.0	1,580,994
20 CRAWFORD	909.9	1,898.9	1,665.3	2,038,991
21 CUMBERLAND	556.8	1,288.3	1,254.2	5,829,002
22 DAUPHIN	557.3	1,357.0	1,357.7	6,569,691
23 DELAWARE	447.9	1,200.2	1,365.6	8,765,070
24 ELK	293.1	602.3	538.4	755,515
25 ERIE	781.7	1,851.0	1,782.3	5,070,345
26 FAYETTE	758.6	1,629.4	1,439.1	2,331,110
27 FOREST	201.3	402.5	325.3	162,631
28 FRANKLIN	613.9	1,301.8	1,206.5	3,325,958
29 FULTON	342.2	729.0	614.2	709,346
30 GREENE	573.7	1,200.0	965.8	1,084,042
31 HUNTINGDON	598.5	1,211.2	1,020.3	976,621
32 INDIANA	798.7	1,705.1	1,468.7	1,971,747
33 JEFFERSON	555.7	1,169.8	1,015.1	1,492,055
34 JUNIATA	354.9	757.1	642.8	659,235

\* 12' EQUIVALENT LANE MILES

## MILEAGE AND TRAVEL PENNDOT SYSTEM

COUNTY	TOTAL			
	LINEAR MILES	LANE MILES	12' EQUIV *	DVMT
35 LACKAWANNA	557.1	1,345.1	1,341.7	4,551,533
36 LANCASTER	1,046.9	2,260.3	2,230.0	8,754,220
37 LAWRENCE	385.3	839.2	771.9	1,539,859
38 LEBANON	369.7	842.2	819.2	2,461,620
39 LEHIGH	535.8	1,256.6	1,206.3	5,612,566
40 LUZERNE	852.8	2,025.1	1,999.9	6,361,077
41 LYCOMING	716.5	1,593.7	1,411.8	2,568,053
42 MCKEAN	381.7	782.6	701.4	788,220
43 MERCER	743.8	1,650.5	1,498.5	3,197,567
44 MIFFLIN	239.7	531.1	492.0	902,317
45 MONROE	519.0	1,184.4	1,119.7	4,184,588
46 MONTGOMERY	769.4	1,865.9	2,028.8	11,826,044
47 MONTOUR	172.1	382.6	350.4	714,472
48 NORTHAMPTON	501.0	1,111.7	1,091.9	4,518,046
49 NORTHUMBERLAND	525.3	1,139.2	1,060.2	1,868,139
50 PERRY	419.5	910.7	795.4	1,329,766
51 PIKE	327.4	731.8	676.3	1,479,182
52 POTTER	444.6	893.4	708.9	406,431
53 SCHUYLKILL	597.9	1,375.4	1,321.0	3,336,383
54 SNYDER	303.4	654.8	576.4	1,039,360
55 SOMERSET	882.3	1,833.2	1,575.0	1,594,207
56 SULLIVAN	243.8	490.4	396.0	169,790
57 SUSQUEHANNA	795.8	1,647.0	1,362.5	1,408,555
58 TIOGA	623.9	1,315.3	1,160.5	1,202,273
59 UNION	280.9	630.2	567.2	1,296,435
60 VENANGO	529.1	1,136.0	1,023.4	1,546,615
61 WARREN	530.4	1,087.9	925.0	875,165
62 WASHINGTON	1,094.0	2,407.1	2,140.2	5,200,665
63 WAYNE	717.1	1,451.8	1,217.4	1,141,790
64 WESTMORELAND	1,201.7	2,645.8	2,419.3	6,281,585
65 WYOMING	364.9	756.1	667.4	669,866
66 YORK	1,132.5	2,437.1	2,334.3	7,509,813
67 PHILADELPHIA	360.5	1,307.1	1,727.7	11,441,796
<b>TOTAL PENNDOT</b>	<b>39,871.7</b>	<b>88,462.1</b>	<b>81,966.4</b>	<b>224,428,698</b>

\* 12' EQUIVALENT LANE MILES



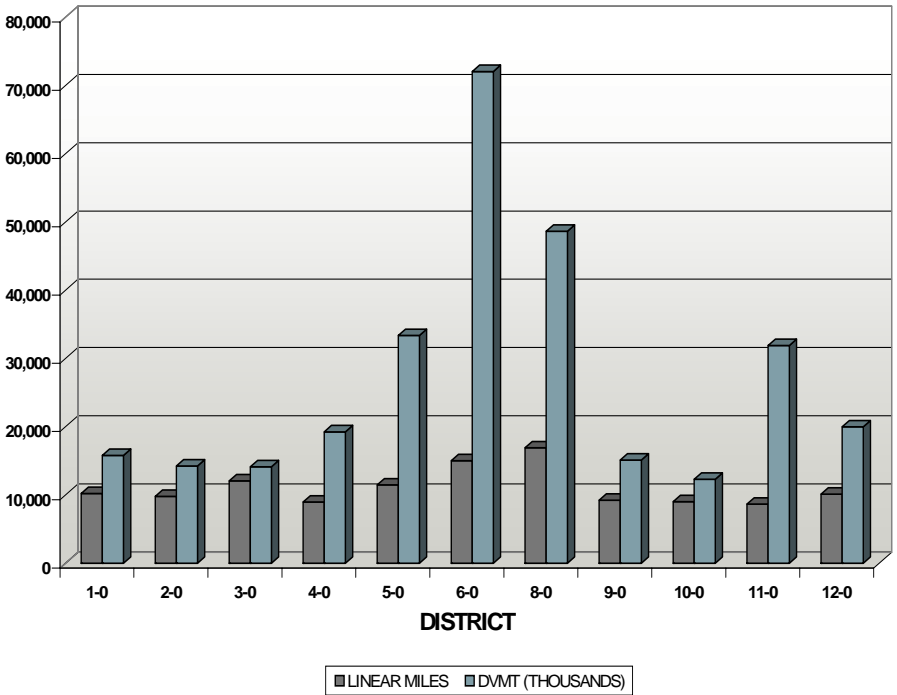
## MILEAGE AND TRAVEL PENNDOT DISTRICTS

DISTRICT	PENNDOT		OTHER AGENCY LINEAR MILES*	TURNPIKE LINEAR MILES	TOLL BRIDGES LINEAR MILES	LOCAL LINEAR MILES	TOTAL	
	LINEAR MILES	DVMT (THOUSANDS)					LINEAR MILES	DVMT (THOUSANDS)
1-0	3,696.2	12,891	379.5	0.0	0.0	6,144.2	10,219.9	15,817
2-0	3,513.8	11,023	1,505.2	0.0	0.0	4,779.4	9,798.4	14,257
3-0	4,255.0	11,575	683.6	0.0	0.0	7,132.2	12,070.8	14,140
4-0	3,615.2	15,612	135.8	32.0	0.7	5,197.7	8,981.4	19,263
5-0	3,302.9	26,333	168.7	57.3	1.4	7,953.0	11,483.4	33,378
6-0	3,559.7	51,884	138.8	84.5	7.4	11,237.4	15,027.8	72,060
8-0	5,240.3	37,935	370.4	108.6	1.0	11,193.9	16,914.1	48,653
9-0	3,755.9	9,948	438.2	86.8	0.0	4,950.6	9,231.4	15,126
10-0	3,135.0	10,543	110.3	4.4	0.0	5,792.9	9,042.7	12,318
11-0	2,169.9	21,788	33.0	80.4	0.0	6,400.8	8,684.1	31,923
12-0	3,627.9	14,897	73.7	81.6	0.3	6,344.0	10,127.5	20,003
<b>TOTAL</b>	<b>39,871.7</b>	<b>224,429</b>	<b>4,037.3</b>	<b>535.5</b>	<b>10.8</b>	<b>77,126.1</b>	<b>121,581.4</b>	<b>296,939</b>

\* Includes State and Federal Agency Miles

MILEAGE AND TRAVEL  
PENNDOT DISTRICTS

TOTAL HIGHWAY SYSTEM  
LINEAR MILES AND DVMT BY DISTRICT



## FUNCTIONAL CLASSIFICATION

- 1. Interstate System** – The Interstate System consists of all presently designated freeway routes meeting the Interstate geometric and construction standards for future traffic. The Interstate System is the highest classification of arterial roads and streets and provides the highest level of mobility, at the highest speed, for a long uninterrupted distance.  
(Maintenance Functional Class “A”)
- 2. Other Arterials** – These consist of limited access freeways, multi-lane highways, and other important highways supplementing the Interstate System that connect, as directly as practicable, the Nation’s principal urbanized areas, cities, and industrial centers; serve the national defense; and connect at suitable border points with routes of continental importance.  
(Maintenance Functional Class “B” and “C”)
- 3. Collectors** – The collectors provide both land access service and traffic circulation within residential neighborhoods, commercial and industrial areas, and downtown city centers. Collectors connect local roads and streets with arterials and provide less mobility than arterials at lower speeds and for a shorter distance.  
(Maintenance Functional Class “D”)
- 4. Locals** – The local roads and streets provide a high level of access to abutting land but limited mobility.  
(Maintenance Functional Class “E”)

## GLOSSARY

**AADT** (Annual Average Daily Traffic) – Typical daily traffic on a road segment for all days in the week, over a one year period.

**Mean AADT** – The weighted average of AADTs for all segments of the road.

**DVMT** – Daily Vehicle Miles of Travel; a measure of total travel, by all vehicles.

**Federal Aid System** – Roads eligible for federal-aid-highway funds; determined by functional classification.

**Heavy Trucks** – Trucks with 5 or more axles.

**Lane Miles** – Aggregate of miles times number of lanes.

**12' Equivalent Lane Miles** – Total pavement width is divided by 12 to yield the number of equivalent 12' lanes.

**Linear Miles** – Length measured along roadway centerline.

**Maintenance Functional Class** - Maintenance Functional Class is based on the federal functional class shown on page 32.

**National Highway System (NHS)** – The NHS is comprised of principal arterial and Interstate routes, serving major population centers and intermodal transportation facilities.

**Other Agencies** – Includes other state and federal agencies such as State Universities, Department of Conservation and Natural Resources, Department of Health, Department of Education, National Parks & US Forest Service.

**Rural** – The area outside the boundaries of small urban & urbanized areas.

**Small Urban** – Places having a population of 5,000 or more, not in an urbanized area.

**Toll Bridges** – Delaware River toll bridges operated by Delaware River Joint Toll Bridge Commission, Delaware River Port Authority & Burlington County Bridge Commission.

**Turnpike** – Toll roads operated by the PA Turnpike Commission.

**Urban** – Urban places of 5,000 or more population and urbanized areas as designated by the Bureau of the Census.

**CUSTOMER SERVICE INFORMATION****National Highway System Maps:**

State, district and county maps available from  
Gaye Liddick, Transportation Planning Division  
Telephone: (717) 787-5983 or email: [galiddick@state.pa.us](mailto:galiddick@state.pa.us)

**Functional Class Maps:**

State, district and county maps available from  
Gaye Liddick, Transportation Planning Division  
Telephone: (717) 787-5983 or email: [galiddick@state.pa.us](mailto:galiddick@state.pa.us)

**Traffic Volume Maps:**

Statewide and selected county maps available from  
Jeremy Freeland, Transportation Planning Division  
Telephone: (717) 787-2939 or email: [jfreeland@state.pa.us](mailto:jfreeland@state.pa.us)

**Highway and Truck Traffic Data:**

Available from  
Jeremy Freeland, Transportation Planning Division  
Telephone: (717) 787-2939 or email: [jfreeland@state.pa.us](mailto:jfreeland@state.pa.us)

**All the above information is also available  
by writing to:**

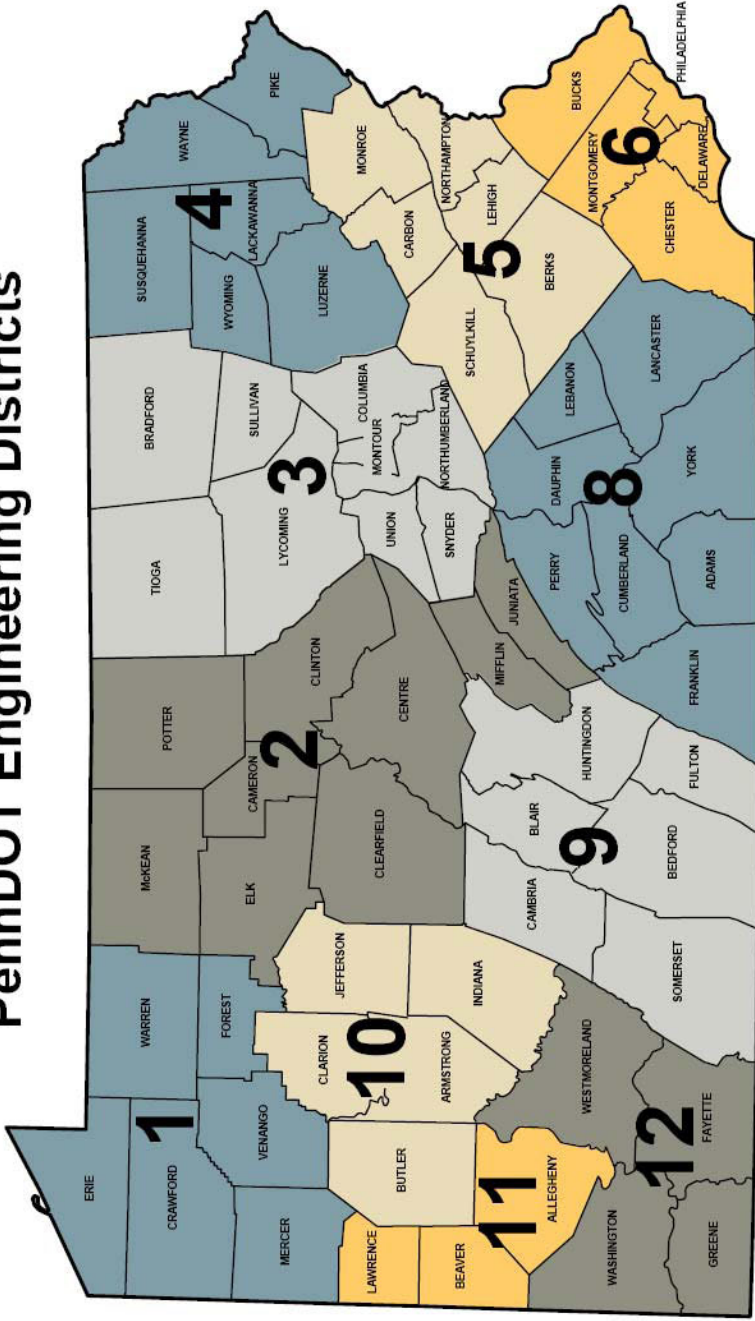
Pennsylvania Department of Transportation  
Bureau of Planning and Research  
Transportation Planning Division  
P.O. Box 3555  
Harrisburg, Pennsylvania 17105-3555

**Fax Number:** (717) 783-9152

**PennDOT Home Page Address:**

For more information, visit us through the Pennsylvania  
Homepage at <http://www.state.pa.us> or visit PennDOT  
directly at <http://www.dot.state.pa.us>

# PennDOT Engineering Districts



In cooperation with



U.S. Department of Transportation

**Federal Highway  
Administration**