

Maryland Traffic Safety Facts 2007



Maryland Department of
Transportation
State Highway Administration



Charles "McC." Mathias, Jr., National Study Center
for Trauma and Emergency Medical Systems



January 2009

The Honorable Martin O'Malley
Governor of Maryland

The Honorable Anthony G. Brown
Lt. Governor of Maryland

The Honorable John D. Procari
Secretary of Transportation

Neil J. Pedersen
*Administrator, State Highway Administration and
Governor's Highway Safety Representative*

Vernon F. Betkey, Jr.
*Chief, Maryland Highway Safety Office
and Maryland Highway Safety Coordinator*

For further information, please contact:
Maryland Highway Safety Office
7491 Connelly Drive
Hanover, MD 21076
Phone 410.787.4050
Toll free 888.963.0307
mhso@sha.state.md.us
www.marylandroads.com

Table of Contents

<i>Introduction</i>	1
<i>Chapter 1: Trends</i>	3
Table 1 – Maryland Crash Summary	5
Figure 1 – Crashes in Maryland.....	5
Figure 2 – Persons Injured in Crashes in Maryland.....	5
Table 2 - Crashes by Severity, 2003-2007	6
Table 3 - Persons Killed or Injured and Fatality and Injury Rates per Population, Licensed Drivers, Registered Vehicles and Vehicle Miles Traveled, 2003-2007	7
Table 4 - Vehicles Involved in Crashes and Involvement Rates per Vehicle Miles of Travel and per Registered Vehicles by Vehicle Type and Crash Severity, 2003-2007	8
Table 5 - Persons Killed or Injured by Person Type and Vehicle Type, 2003-2007	9
Table 6 - Drivers Involved in Crashes and Involvement Rates per Licensed Drivers by Sex and Crash Severity, 2003-2007.....	10
Table 7 - Motor Vehicle Occupants and Motorcycle Rider Fatality and Injury Rates per Population by Age Group, 2003-2007	11
Table 8 – Passenger Car Occupants Killed or Injured and Fatality and Injury Rates per Registered Vehicles and Vehicle Miles of Travel, 2003-2007	11
Table 9 – Light Truck Occupants Killed or Injured and Fatality and Injury Rates per Registered Vehicles and Vehicle Miles of Travel, 2003-2007	12
Table 10 – Large Truck Occupants Killed or Injured and Fatality and Injury Rates per Registered Vehicles and Vehicle Miles of Travel, 2003-2007	12
Table 11 – Motorcycle Riders Killed or Injured and Fatality and Injury Rates per Registered Vehicles and Vehicle Miles of Travel, 2003-2007	12
Table 12: Non-motorist Fatality and Injury Rates per Population by Age Group, 2003-2007	13
Table 13 - Persons Killed, by Highest Blood Alcohol Concentration (BAC) in the Crash, 2003-2007	14
Table 14 - Drivers in Fatal Crashes by Blood Alcohol Concentration (BAC) and Sex, 2003-2007	14
Table 15 – Drivers of Passenger Cars and Light Trucks in Crashes by Crash Severity and Restraint Use, 2003-2007.....	15
Table 16 – Occupants of Passenger Cars and Light Trucks Killed or Injured, by Restraint Use, 2003-2007	15
<i>Chapter 2: 2007 Crashes</i>	17
Table 17 - Crashes and Crash Rates per 100 Million Vehicle Miles Traveled by Month and Crash Severity.....	19
Table 18 - Crashes by Time of Day, Day of Week, and Crash Severity.....	20
Table 19 - Crashes by Weather Conditions, Light Condition, and Crash Severity.....	22

Table 20 - Crashes by Crash Type, Relation to Roadway, and Crash Severity	23
Table 21 - Crashes by Speed Limit Crash Type, and Crash Severity	24
Table 22- Fatal Crashes by Speed Limit and Land Use - 2007.....	25
Table 23 – Crashes by First Harmful Event, Manner of Collision, and Crash Severity	26
Table 24 – Two-Vehicle Crashes by Vehicle Type and Crash Severity	27
Table 25 – Crashes and Percent Alcohol Related by Time of Day, Crash Type, and Crash Severity	28
<i>Chapter 3: 2007 Vehicles</i>	31
Table 26 - Vehicles Involved in Crashes by Vehicle Type and Crash Severity	33
Table 27 – Vehicles Involved in Fatal Crashes by Body Type.....	34
Table 28 – Vehicles Involved in Crashes by Vehicle Type, Rollover Occurrence, and Crash Severity (Excludes Motorcycles).....	35
Table 29 – Vehicles Involved in Crashes by Vehicle Type, Fire Occurrence, and Crash Severity	37
Table 30 – Vehicles Involved in Single- and Two-Vehicle Crashes by Movement and Crash Severity	38
Table 31 – Passenger Cars Involved in Crashes by First Harmful Event and Crash Severity ..	39
Table 32 – Passenger Cars Involved in Crashes by Initial Point of Impact, Crash Severity, and Crash Type.....	40
Table 33 – Light Trucks Involved in Crashes by First Harmful Event and Crash Severity	41
Table 34 – Light Trucks Involved in Crashes by Initial Point of Impact, Crash Severity, and Crash Type.....	42
Table 35 – Large Trucks Involved in Crashes by First Harmful Event and Crash Severity	43
Table 36 – Large Trucks Involved in Crashes by Initial Point of Impact, Crash Severity, and Crash Type.....	44
Table 37 – Large Trucks Involved in Crashes by Truck Type, Rollover Occurrence, and Crash Severity	45
Table 38 – Motorcycles Involved in Crashes by First Harmful Event and Crash Severity	46
Table 39 – Motorcycles Involved in Crashes by Initial Point of Impact, Crash Severity, and Crash Type.....	47
Table 40 – Buses Involved in Crashes by First Harmful Event and Crash Severity.....	48
Table 41 – Buses Involved in Crashes by Initial Point of Impact, Crash Severity, and Crash Type	49
<i>Chapter 4: 2007 People</i>	51
Table 42 - Persons Killed or Injured by Person Type and Injury Severity	53
Table 43 - Persons Killed or Injured, by Age and Injury Severity.....	54
Table 44 - Persons Killed or Injured by Sex and Injury Severity	54

Table 45 - Persons Killed or Injured and Fatality and Injury Rates per 100,000 Population by Age and Sex	55
Table 46 - Persons Killed or Injured in Crashes by Weather Condition and Light Condition .	56
Table 47 - Persons Killed or Injured in Crashes by Speed Limit and Crash Type	57
Table 48 - Persons Killed in Crashes by Speed Limit and Land Use - 2007	58
Table 49 - Persons Killed or Injured in Crashes and Percent Alcohol-Related by Time of Day and Crash Type	59
Table 50 - Persons Killed in Construction/Maintenance Zones, by Roadway Function Class and Person Type.....	60
Table 51 - Driver Involvement Rates per 100,000 Licensed Drivers by Age, Sex and Crash Severity	61
Table 51 - Driver Involvement Rates per 100,000 Licensed Drivers by Age, Sex and Crash Severity (continued).....	62
Table 52 - Related Factors for Drivers and Motorcycle Operators Involved in Fatal Crashes .	63
Table 53 - Vehicle Occupants Killed or Injured, by Vehicle Type, Person Type, and Injury Severity	64
Table 54 - Vehicle Occupants Killed or Injured, by Sex and Vehicle Type.....	65
Table 55 - Vehicle Occupants Killed or Injured, by Age and Vehicle Type	66
Table 56 - Vehicle Occupants Killed or Injured, by Age, Person Type, and Sex.....	67
Table 57 - Vehicle Occupants Killed or Injured, by Vehicle Type and First Harmful Event...	68
Table 58 - Vehicle Occupants Killed or Injured, by Initial Point of Impact and Vehicle Type	69
Table 59 - Vehicle Occupants Killed or Injured, by Vehicle Type and Ejection.....	70
Table 60 - Occupants Killed or Injured in Two-Vehicle Crashes, by Vehicle Types Involved	71
Table 61 - Occupants Involved in Fatal Crashes and Occupant Fatalities by Vehicle Body Types.....	73
Table 62 - Persons Injured in Alcohol Crashes, by Person Type and Injury Severity	74
Table 63 - Drivers and Motorcycle Operators Involved in Crashes, by Age, Alcohol Involvement, and Crash Severity	75
Table 64 - Drivers and Motorcycle Operators Injured, by Time of Day, Day of Week, Age, Alcohol Involvement, and Crash Type	76
Table 65 - Drivers and Motorcycle Operators Involved in Crashes, by Vehicle Type, Alcohol Involvement, and Crash Severity	77
Table 66 - Drivers Involved in Crashes, by Vehicle Type, Restraint Use, and Crash Severity	79
Table 67 - Passenger Car and Light Truck Occupants Killed or Injured by Age and Restraint Use	81
Table 68 - Passenger Car and Light Truck Occupants Survivors of Fatal Crashes, by Age and Restraint Use.....	82
Table 69 - Passenger Car Occupants Killed or Injured, by Seating Position and Restraint Use	83

Table 70 - Light Truck Occupants Killed or Injured, by Seating Position and Restraint Use ..	84
Table 71 - Passenger Car and Light Truck Occupants Killed or Injured, by Restraint Use and Type of Restraint.....	85
Table 72 - Motorcycle Riders Killed or Injured, by Time of Day and Day of Week	86
Table 73 - Motorcycle Riders Killed, by Person Type and Helmet Use.....	87
Table 74 - Persons Killed or Injured in School Bus Related Crashes, by Person Type.....	87
Table 75 - Pedestrians Killed or Injured, by Age and Location.....	88
Table 76 - Pedestrians Killed or Injured and Fatality and Injury Rates per 100,000 Population, by Age and Sex	89
Table 77 - Pedestrians Killed or Injured by Time of Day and Day of Week.....	90
Table 78 - Pedestrians Killed or Injured in Single-Vehicle Crashes, by Vehicle Type and Initial Point of Impact.....	91
Table 79 - Pedestrians Killed, by Related Factors	92
Table 80 - Pedalcyclists Killed or Injured, by Age and Location	93
Table 81 - Pedalcyclists Killed or Injured and Fatality and Injury Rates per 100,000 Population, by Age and Sex.....	94
Table 82 - Pedalcyclists Killed or Injured by Time of Day and Day of Week	95
Table 83 - Pedalcyclists Killed or Injured in Single-Vehicle Crashes, by Vehicle Type and Initial Point of Impact	96
Table 84 - Pedalcyclists Killed, by Related Factors	97
<i>Chapter 5: 2007 Counties.....</i>	<i>99</i>
Table 85 - Fatality and Total Crash Rates per VMT, Population, Licensed Driver, and Registered Vehicle by County, 2007	101
Table 86 - 2007 Traffic Fatalities by County and Percent Change from 2006	102
Table 87 - Fatal Crashes, by County and First Harmful Event.....	103
Table 88 - Fatal Crashes, by County and Roadway Function Class	104
Table 89 - Fatalities, by County and Roadway Function Class	105
Table 90 – Persons Killed, Licensed Drivers, Registered Vehicles, Population, and Fatality Rates by County	106
Table 91 - Persons Killed, by County and Person Type	107
Table 92 - Persons Killed, by County and Age Group	108
Table 93 - Occupants Killed, by County and Vehicle Type	109
Table 94 - Passenger Car and Light Truck Occupants Killed, by County and Restraint Use.	110
Table 95 - 2007 Ranking of County Pedestrian Fatality Rates	111
Table 96 – Persons Killed, by County and Highest Blood Alcohol Concentration (BAC) in the Crash - 2007.....	112

Table 97 – Drivers Involved in Fatal Crashes, by County and Blood Alcohol Concentration (BAC) of the Driver - 2007.....	113
Table 98 – Drivers Killed in Fatal Crashes, by County and Blood Alcohol Concentration (BAC) of the Driver - 2007.....	114
Table 99 – Surviving Drivers Involved in Fatal Crashes, by County and Blood Alcohol Concentration (BAC) of the Driver - 2007	115
Table 100 - Fatalities and Fatality Rates by County, 2003-2007.....	116

Introduction

This publication is a statistical review of reported motor vehicle traffic crashes and other data related to highway safety in the State of Maryland for the year 2007**. Crash data are aggregated by Maryland State Police Central Records Division from 144 law enforcement agencies statewide. Other data are provided through the Maryland Crash Outcome Data Evaluation System project sponsored by the National Highway Traffic Safety Administration (NHTSA). Alcohol fatalities are provided through NHTSA's Fatality Analysis Reporting System (FARS). FARS data are obtained solely from the State's existing documents:

- Police Accident Reports Death Certificates
- State Vehicle Registration Files Coroner/Medical Examiner Reports
- State Driver Licensing Files Hospital Medical Reports
- State Highway Department Data Emergency Medical Service Reports
- Vital Statistics Other State Records

This report has been compiled by the University of Maryland's National Study Center for Trauma and EMS (<http://nsc.umaryland.edu>).

**Note: In some cases, unknown data are not shown in the table so rows and columns may not add up to the given total.

Date of Publication: November 2008

Chapter 1: Trends

Table 1 – Maryland Crash Summary

	2003	2004	2005	2006	2007	5 Year Avg.*
Fatal Crashes	596	576	577	593	558	580
Injury Crashes	38,710	37,422	36,543	35,864	34,866	36,681
Property Damage Only	69,824	66,105	65,488	65,431	65,519	66,473
Total Crashes	109,130	104,103	102,608	101,888	100,943	103,734
Total of All Fatalities	651	643	614	651	615	635
Total Number Injured	58,118	57,409	55,287	53,615	51,729	55,232

* Averages for all pages are 5 year averages.

Figure 1 – Crashes in Maryland

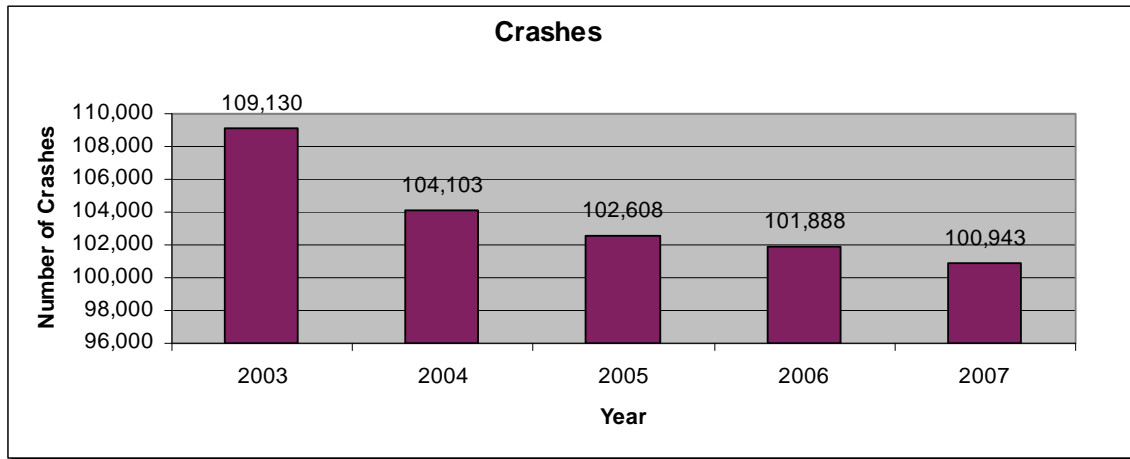


Figure 2 – Persons Injured in Crashes in Maryland

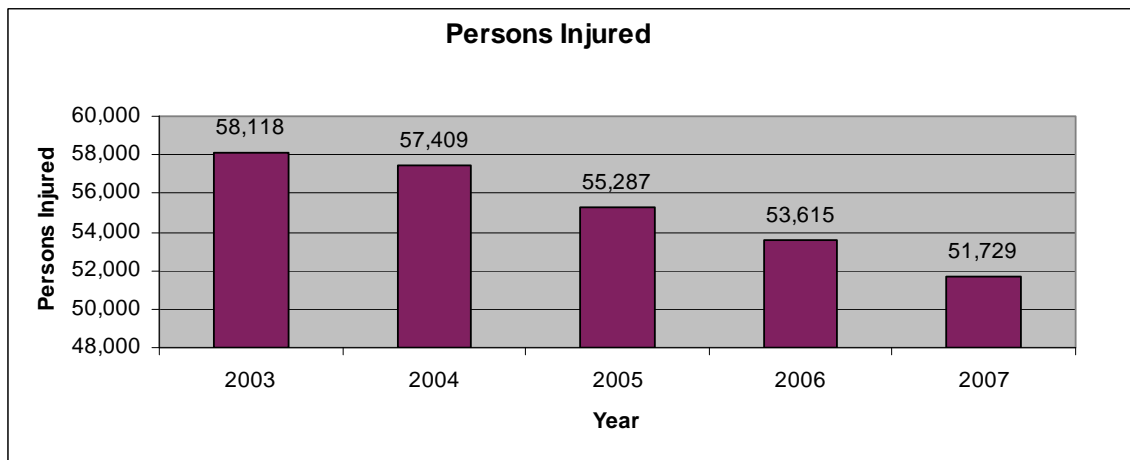


Figure 3 – Persons Killed in Crashes in Maryland

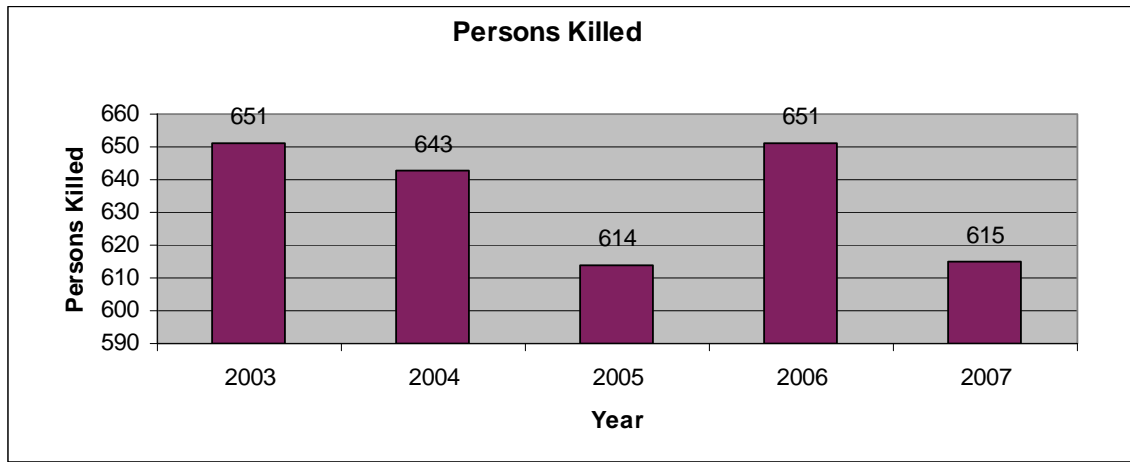


Table 2 - Crashes by Severity, 2003-2007

Year	Fatal Crashes		Injury Crashes		Property Damage Only		Total Crashes	
	Number	%	Number	%	Number	%	Number	%
2003	596	0.5	38,710	35.5	69,824	64.0	109,130	100.0
2004	576	0.6	37,422	35.9	66,105	63.5	104,103	100.0
2005	577	0.6	36,548	35.6	65,499	63.8	102,624	100.0
2006	593	0.6	35,864	35.2	65,431	64.2	101,888	100.0
2007	558	0.6	34,866	34.5	65,519	64.9	100,943	100.0

Table 3 - Persons Killed or Injured and Fatality and Injury Rates per Population, Licensed Drivers, Registered Vehicles and Vehicle Miles Traveled, 2003-2007

Killed									
Year	Fatalities	Resident Population (Thousands)	Fatality Rate per 100,000 Population	Licensed Drivers (Thousands)	Fatality Rate per 100,000 Licensed Drivers	Registered Motor Vehicles (Thousands)	Fatality Rate per 100,000 Registered Vehicles	Vehicle Miles Traveled*	Fatality Rate per 100 Million Vehicle Miles Traveled
2003	651	5,509	11.8	3,763	17.3	4,481	14.5	54.7	1.2
2004	643	5,558	11.6	3,820	16.8	4,562	14.1	55.1	1.2
2005	614	5,600	11.0	3,872	15.9	4,498	13.6	56.7	1.1
2006	651	5,615	11.6	3,872	16.8	4,691	13.9	56.6	1.2
2007	615	5,618	10.9	3,966	15.5	4,749	13.0	56.8	1.1
Injured									
Year	Injuries	Resident Population (Thousands)	Injury Rate per 100,000 Population	Licensed Drivers (Thousands)	Injury Rate per 100,000 Licensed Drivers	Registered Motor Vehicles (Thousands)	Injury Rate per 100,000 Registered Vehicles	Vehicle Miles Traveled*	Injury Rate per 100 Million Vehicle Miles Traveled
2003	58,118	5,509	1,055.0	3,763	1,544.4	4,481	1,297.0	54.7	106.2
2004	57,409	5,558	1,032.9	3,820	1,502.8	4,562	1,258.4	55.1	97.6
2005	55,303	5,600	987.6	3,872	1,428.3	4,498	1,229.5	56.7	97.5
2006	53,615	5,615	954.8	3,872	1,384.7	4,691	1,142.9	56.6	94.7
2007	51,729	5,618	920.8	3,966	1,304.3	4,749	1,089.3	56.8	91.1

*In billions

Table 4 - Vehicles Involved in Crashes and Involvement Rates per Vehicle Miles of Travel and per Registered Vehicles by Vehicle Type and Crash Severity, 2003-2007

Year	Vehicle Type											
	Passenger Cars			Light Trucks			Large Trucks			Motorcycles		
	No.	Rate per 100 Million VMT	Rate per 100,000 Registered Vehicles	No.	Rate per 100 Million VMT	Rate per 100,000 Registered Vehicles	No.	Rate per 100 Million VMT	Rate per 100,000 Registered Vehicles	No.	Rate per 100 Million VMT	Rate per 100,000 Registered Vehicles
Fatal Crashes												
2003	541	0.99	12.07	329	0.60	7.34	78	0.14	1.74	61	0.11	1.36
2004	447	0.81	9.80	274	0.50	6.01	94	0.17	2.06	68	0.12	1.49
2005	444	0.78	9.87	312	0.55	6.94	75	0.13	1.67	89	0.16	2.05
2006	468	0.83	9.98	318	0.56	6.78	76	0.13	1.62	86	0.15	1.83
2007	404	0.71	8.51	286	0.50	6.02	71	0.12	1.50	98	0.17	2.06
Injury Crashes												
2003	45,358	82.95	1012.16	22,051	40.33	492.07	2,374	4.34	52.98	1,134	2.07	25.31
2004	42,135	76.44	923.58	21,182	38.43	464.30	2,315	4.20	50.74	1,339	2.43	29.35
2005	41,073	72.39	913.13	21,887	38.58	486.59	2,479	4.37	55.11	1,473	2.60	33.88
2006	39,381	69.56	839.51	22,214	39.24	473.55	2,298	4.06	48.99	1,585	2.80	33.79
2007	37,097	65.35	781.19	22,320	39.32	470.02	2,043	3.60	43.02	1,593	2.81	33.54
Property-Damage-Only Crashes												
2003	74,876	136.94	1,670.85	35,992	65.83	803.16	5,463	9.99	121.91	285	0.52	6.36
2004	71,605	129.91	1,569.55	35,001	63.50	767.21	5,211	9.45	114.22	354	0.64	7.76
2005	68,202	120.21	1,516.26	35,721	62.96	794.14	5,395	9.51	119.94	358	0.63	8.23
2006	66,920	118.20	1,426.58	37,602	66.42	801.59	5,221	9.22	111.30	372	0.66	7.93
2007	65,496	115.38	1,379.22	38,326	67.52	807.07	4,909	8.65	103.37	375	0.66	7.90

**Table 5 - Persons Killed or Injured by Person Type and Vehicle Type,
2003-2007**

Year	Person Type											Total
	Occupants by Vehicle Type						Motorcycle Riders	Nonoccupants				
	Passenger Cars	Light Truck	Large Truck	Buses	Other/Unknown	Total		Pedestrian	Pedalcyclist	Other/Unknown	Total	
Killed												
2003	308	158	13	1	6	526	40	118	6	1	125	651
2004	296	154	24	3	4	536	55	95	11	1	107	643
2005	271	152	12	2	7	503	59	101	7	3	111	614
2006	314	141	8	0	4	467	82	93	7	2	102	651
2007	254	131	8	0	5	398	97	110	7	3	120	615
Injured												
2003	33,530	17,373	928	687	1,143	54,623	962	2,724	659	112	3,495	58,118
2004	30,378	16,315	869	690	1,137	50,453	1,064	2,481	673	146	3,300	53,753
2005	30,403	17,431	917	694	1,242	51,892	1,205	2,625	629	157	3,411	55,303
2006	31,036	15,095	743	847	855	48,576	1,660	2,594	648	137	3,379	53,615
2007	28,986	15,302	616	761	1,090	46,755	1,657	2,526	636	155	3,317	51,729

Table 6 - Drivers Involved in Crashes and Involvement Rates per Licensed Drivers by Sex and Crash Severity, 2003-2007

Year	Sex						Total (>15 Years Old)		
	Male (>15 Years Old)			Female (>15 Years Old)					
	Number Involved in Crashes	Licensed Drivers (Thousands)	Rate per 100,000 Licensed Drivers	Number Involved in Crashes	Licensed Drivers (Thousands)	Rate per 100,000 Licensed Drivers	Number Involved in Crashes	Licensed Drivers (Thousands)	Rate per 100,000 Licensed Drivers
Drivers in Fatal Crashes									
2003	722	1,846,781	39.1	264	1,916,250	13.8	986	3,763,031	26.2
2004	655	1,874,145	35.0	203	1,945,969	10.4	858	3,820,114	22.5
2005	670	1,899,500	35.3	232	1,972,071	11.8	902	3,871,571	23.3
2006	682	1,840,886	37.0	244	1,937,307	12.6	926	3,778,193	24.5
2007	632	1,954,346	32.3	203	2,011,820	10.1	835	3,966,166	21.0
Drivers in Injury Crashes									
2003	39,203	1,846,781	2,122.8	29,575	1,916,250	1,543.4	68,778	3,763,031	1,827.7
2004	36,303	1,874,145	1,937.0	27,714	1,945,969	1,424.2	64,017	3,820,114	1,675.8
2005	37,152	1,899,500	1,955.9	27,915	1,972,071	1,415.5	65,067	3,871,571	1,680.6
2006	35,765	1,840,886	1,942.8	27,341	1,937,307	1,411.3	63,106	3,778,193	1,670.3
2007	34,388	1,954,346	1,759.6	26,488	2,011,820	1,316.6	60,876	3,966,166	1,534.9
Drivers in Property-Damage-Only Crashes									
2003	61,332	1,846,781	3,321.0	37,502	1,916,250	1,957.0	98,834	3,763,031	2,626.4
2004	57,485	1,874,145	3,067.3	35,763	1,945,969	1,837.8	93,248	3,820,114	2,441.0
2005	57,187	1,899,500	3,010.6	35,785	1,972,071	1,814.6	92,972	3,871,571	2,401.4
2006	56,326	1,840,886	3,059.7	35,429	1,937,307	1,828.8	91,755	3,778,193	2,428.5
2007	55,529	1,954,346	2,841.3	35,581	2,011,820	1,768.6	91,110	3,966,166	2,297.2

Table 7 - Motor Vehicle Occupants and Motorcycle Rider Fatality and Injury Rates per Population by Age Group, 2003-2007

Year	Age Group (Years)											Total
	<5	5-9	10-15	16-20	21-24	25-34	35-44	45-54	55-64	65-74	75+	
Fatality Rate per 100,000 Population												
2003	1.1	1.9	2.4	22.5	18.9	14.3	7.6	7.2	7.4	10.2	17.8	9.4
2004	1.6	1.6	3.2	22.4	24.0	12.9	7.4	6.8	8.0	11.6	16.2	9.6
2005	0.5	1.9	2.4	16.9	22.8	12.1	9.5	6.5	6.4	10.3	14.0	8.9
2006	0.8	0.8	0.8	19.0	25.1	12.7	10.6	7.5	9.5	9.6	14.9	9.7
2007	0.5	0.8	2.8	17.9	22.4	12.6	9.1	8.6	6.7	7.7	8.3	8.8
Injury Rate per 100,000 Population												
2003	296.4	344.7	418.4	2,158.8	2,069.8	1,460.1	1,053.8	881.0	731.3	614.6	542.8	969.0
2004	222.9	285.8	334.9	1,959.8	1,846.6	1,338.1	978.4	814.6	678.6	567.1	434.7	875.1
2005	256.9	323.6	412.0	1,967.2	1,890.2	1,357.8	1,018.6	828.8	689.4	573.6	483.1	904.3
2006	255.8	290.0	366.9	1,854.6	1,830.2	1,287.8	972.9	815.4	667.0	566.7	524.1	874.4
2007	262.0	299.0	354.8	1,709.3	1,732.0	1,257.5	949.2	800.5	638.0	541.6	496.5	841.7

** This table does not include occupants and riders of unknown age

Table 8 – Passenger Car Occupants Killed or Injured and Fatality and Injury Rates per Registered Vehicles and Vehicle Miles of Travel, 2003-2007

Year	Registered Vehicles	Vehicle Miles Traveled (Millions)	Passenger Car Occupants Killed	Fatality Rate per 100,000 Registered Vehicles	Fatality Rate per 100 Million Vehicle Miles Traveled	Passenger Car Occupants Injured	Injury Rate per 100,000 Registered Vehicles	Injury Rate per 100 Million Vehicle Miles Traveled
2003	4,481,302	54,678	308	6.9	0.6	33,518	748.0	61.3
2004	4,562,129	55,119	295	6.5	0.5	30,368	665.6	55.1
2005	4,498,048	56,736	270	6.0	0.5	30,378	675.4	53.5
2006	4,690,937	56,616	314	6.7	0.6	31,036	661.6	54.8
2007	4,748,757	56,766	254	5.3	0.4	28,986	610.4	51.1

Table 9 – Light Truck Occupants Killed or Injured and Fatality and Injury Rates per Registered Vehicles and Vehicle Miles of Travel, 2003-2007

Year	Registered Vehicles	Vehicle Miles Traveled (Millions)	Light Truck Occupants Killed	Fatality Rate per 100,000 Registered Vehicles	Fatality Rate per 100 Million Vehicle Miles Traveled	Light Truck Occupants Injured	Injury Rate per 100,000 Registered Vehicles	Injury Rate per 100 Million Vehicle Miles Traveled
2003	4,481,302	54,678	148	3.30	0.27	16,661	371.79	30.47
2004	4,562,129	55,119	146	3.20	0.26	15,578	341.46	28.26
2005	4,498,048	56,736	145	3.22	0.26	16,652	370.21	29.35
2006	4,690,937	56,616	141	3.00	0.25	15,095	321.79	26.66
2007	4,748,757	56,766	131	2.76	0.23	15,302	322.23	26.96

Table 10 – Large Truck Occupants Killed or Injured and Fatality and Injury Rates per Registered Vehicles and Vehicle Miles of Travel, 2003-2007

Year	Registered Vehicles	Vehicle Miles Traveled (Millions)	Large Truck Occupants Killed	Fatality Rate per 100,000 Registered Vehicles	Fatality Rate per 100 Million Vehicle Miles Traveled	Large Truck Occupants Injured	Injury Rate per 100,000 Registered Vehicles	Injury Rate per 100 Million Vehicle Miles Traveled
2003	4,481,302	54,678	23	0.51	0.04	1,640	36.60	3.00
2004	4,562,129	55,119	32	0.70	0.06	1,606	35.20	2.91
2005	4,498,048	56,736	19	0.42	0.03	1,696	37.70	2.99
2006	4,690,937	56,616	8	0.17	0.01	743	15.84	1.31
2007	4,748,757	56,766	8	0.17	0.01	616	12.97	1.08

Table 11 – Motorcycle Riders Killed or Injured and Fatality and Injury Rates per Registered Vehicles and Vehicle Miles of Travel, 2003-2007

Year	Registered Vehicles	Vehicle Miles Traveled (Millions)	Motorcycle Riders Killed	Fatality Rate per 100,000 Registered Vehicles	Fatality Rate per 100 Million Vehicle Miles Traveled	Motorcycle Riders Injured	Injury Rate per 100,000 Registered Vehicles	Injury Rate per 100 Million Vehicle Miles Traveled
2003	4,481,302	54,678	40	0.89	0.07	962	21.47	1.76
2004	4,562,129	55,119	55	1.20	0.10	1,064	23.32	1.93
2005	4,498,048	56,736	59	1.31	0.10	1,205	26.79	2.12
2006	4,690,937	56,616	82	1.75	0.14	1,660	35.39	2.93
2007	4,748,757	56,766	97	2.04	0.17	1,657	34.89	2.92

Table 12: Non-motorist Fatality and Injury Rates per Population by Age Group, 2003-2007

Year	Age Group (Years)											Total
	<5	5-9	10-15	16-20	21-24	25-34	35-44	45-54	55-64	65-74	74+	
Fatality Rate per 100,000 Population												
2003	0.5	1.4	1.4	1.3	1.8	1.8	2.6	4.2	2.2	3.4	1.6	2.2
2004	0.5	1.6	2.0	1.3	1.4	1.4	2.0	3.0	1.7	3.1	1.6	1.9
2005	0.5	0.3	1.2	1.3	1.0	2.4	2.3	2.8	1.5	4.0	3.5	2.0
2006	1.1	0.6	1.1	1.5	1.0	1.6	2.4	3.2	1.3	1.2	2.9	1.8
2007	0.3	0.3	1.1	2.2	3.9	2.5	2.8	2.2	2.4	0.8	2.6	2.0
Injury Rate per 100,000 Population												
2003	19.6	88.3	119.9	89.3	92.8	61.7	54.8	49.8	36.9	33.0	25.4	60.3
2004	16.3	83.3	114.6	96.6	82.7	55.1	46.8	45.7	32.2	25.1	27.2	55.6
2005	24.4	63.9	109.0	98.6	90.4	61.7	52.3	48.3	34.5	33.1	28.2	57.6
2006	20.4	69.9	106.0	108.2	84.9	56.2	48.6	50.1	42.1	26.3	33.0	57.4
2007	18.8	63.2	102.9	96.2	84.6	55.8	49.6	48.7	32.9	30.3	29.5	54.5

Table 13 - Persons Killed, by Highest Blood Alcohol Concentration (BAC) in the Crash, 2003-2007

Year	BAC=0.00		BAC=0.01--0.07		BAC=0.08+		Total Number	Total Fatalities in Alcohol--Related Crashes	
	Number	Percent	Number	Percent	Number	Percent		Number	Percent
2003	400	62	63	10	187	29	650	250	38
2004	384	60	46	7	211	33	643	257	40
2005	403	66	45	7	165	27	614	210	34
2006	416	64	47	7	189	29	652	236	36
2007	389	63	46	8	179	29	614	225	37

Table 14 - Drivers in Fatal Crashes by Blood Alcohol Concentration (BAC) and Sex, 2003-2007

Year	Male			Female		
	Total	BAC = 0.01+ (Percent)	BAC = 0.08+ (Percent)	Total	BAC = 0.01+ (Percent)	BAC = 0.08+ (Percent)
2003	719	27	20	262	14	10
2004	663	30	26	192	14	10
2005	674	25	19	215	12	9
2006	688	26	21	231	16	11
2007	638	28	23	192	11	8

Table 15 – Drivers of Passenger Cars and Light Trucks in Crashes by Crash Severity and Restraint Use, 2003-2007

Year	Restraint Used		Restraint Not Used		Restraint Use Unknown		Total	
	Number	Percent	Number	Percent	Number	Percent	Number	Percent
Drivers in Fatal Crashes								
2003	567	72.5	126	16.1	89	11.4	782	100.0
2004	467	70.8	122	18.5	71	10.8	660	100.0
2005	507	75.7	116	17.3	47	7.0	670	100.0
2006	563	71.6	156	19.8	67	8.5	786	100.0
2007	476	69.0	137	19.8	77	11.1	690	100.0
Drivers in Injury Crashes								
2003	57,107	86.7	1,893	2.9	6,837	10.4	65,837	100.0
2004	53,571	86.5	1,668	2.7	6,667	10.8	61,906	100.0
2005	53,049	86.6	1,653	2.7	6,592	10.8	61,294	100.0
2006	52,474	85.2	1,872	3.0	7,249	11.8	61,595	100.0
2007	50,389	84.8	1,708	2.9	7,320	12.3	59,417	100.0
Drivers in Property-Damage-Only Crashes								
2003	78,323	72.8	1,896	1.8	27,440	25.5	107,659	100.0
2004	74,477	71.8	1,804	1.7	27,424	26.4	103,705	100.0
2005	72,373	71.8	1,690	1.7	26,710	26.5	100,773	100.0
2006	72,900	69.8	1,814	1.7	29,808	28.5	104,522	100.0
2007	72,053	69.4	1,800	1.7	29,969	28.9	103,822	100.0

Table 16 – Occupants of Passenger Cars and Light Trucks Killed or Injured, by Restraint Use, 2003-2007

Year	Restraint Used		Restraint Not Used		Restraint Use Unknown		Total	
	Number	Percent	Number	Percent	Number	Percent	Number	Percent
Occupants Killed								
2003	206	53.6	151	39.3	27	7.0	384	100.0
2004	225	57.7	134	34.4	31	8.0	390	100.0
2005	195	56.4	131	37.9	20	5.8	346	100.0
2006	250	54.9	167	36.7	38	8.4	455	100.0
2007	193	50.1	162	42.1	30	7.8	385	100.0
Occupants Injured								
2003	42,117	87.7	3,079	6.4	2,820	5.9	48,016	100.0
2004	38,759	87.8	2,577	5.8	2,784	6.3	44,120	100.0
2005	39,353	88.1	2,618	5.9	2,679	6.0	44,650	100.0
2006	39,282	85.1	2,705	5.9	4,144	9.0	46,131	100.0
2007	37,498	84.7	2,394	5.4	4,396	9.9	44,288	100.0

Chapter 2: 2007 Crashes

Table 17 - Crashes and Crash Rates per 100 Million Vehicle Miles Traveled by Month and Crash Severity

Month	Crash Severity						Total Crashes	
	Fatal		Injury		Property Damage Only			
	Number	Rate	Number	Rate	Number	Rate	Number	Rate
January	33	0.06	2,705	4.77	5,641	9.94	8,379	14.76
February	28	0.05	2,577	4.54	5,580	9.83	8,185	14.42
March	51	0.09	2,782	4.90	5,542	9.76	8,375	14.75
April	41	0.07	2,698	4.75	4,891	8.62	7,630	13.44
May	55	0.10	3,117	5.49	5,533	9.75	8,705	15.33
June	49	0.09	2,955	5.21	5,427	9.56	8,431	14.85
July	53	0.09	2,999	5.28	5,042	8.88	8,094	14.26
August	48	0.08	2,932	5.17	5,174	9.11	8,154	14.36
September	57	0.10	3,032	5.34	4,979	8.77	8,068	14.21
October	46	0.08	3,328	5.86	6,111	10.77	9,485	16.71
November	53	0.09	2,876	5.07	5,535	9.75	8,464	14.91
December	44	0.08	2,866	5.05	6,063	10.68	8,973	15.81
Total	558	0.98	34,867	61.42	65,518	115.42	100,943	177.82

Table 18 - Crashes by Time of Day, Day of Week, and Crash Severity

Time of Day	Day of Week							Total
	Sunday	Monday	Tuesday	Wednesday	Thursday	Friday	Saturday	
Fatal Crashes								
Midnight to 3 am	23	6	6	8	13	6	18	80
3 am to 6 am	17	9	1	6	2	6	19	60
6 am to 9 am	5	7	5	8	2	9	4	40
9 am to Noon	6	4	5	3	7	5	6	36
Noon to 3 pm	7	8	11	6	8	12	12	64
3 pm to 6 pm	15	23	15	9	21	11	10	104
6 pm to 9 pm	15	11	9	7	6	16	22	86
9 pm to Midnight	7	13	14	8	5	19	22	88
Total	95	81	66	55	64	84	113	558
Injury Crashes								
Midnight to 3 am	590	237	145	179	202	265	574	2,192
3 am to 6 am	302	170	117	168	147	182	254	1,340
6 am to 9 am	257	779	811	844	747	732	332	4,502
9 am to Noon	516	638	681	713	635	706	663	4,552
Noon to 3 pm	833	881	836	815	814	1,037	934	6,150
3 pm to 6 pm	861	1,165	1,159	1,148	1,151	1,432	861	7,777
6 pm to 9 pm	685	708	767	672	745	926	667	5,170
9 pm to Midnight	411	346	371	398	424	606	625	3,181
Unknown	1	0	0	0	0	1	1	3
Total	4,456	4,924	4,887	4,937	4,865	5,887	4,911	34,867
Property-Damage-Only Crashes								
Midnight to 3 am	1,405	623	475	526	567	692	1,404	5,692
3 am to 6 am	820	396	289	345	357	403	779	3,389
6 am to 9 am	548	1,490	1,457	1,463	1,375	1,302	738	8,373
9 am to Noon	900	1,253	1,353	1,395	1,287	1,348	1,176	8,712
Noon to 3 pm	1,385	1,414	1,437	1,482	1,456	1,790	1,396	10,360
3 pm to 6 pm	1,427	1,872	1,958	1,993	2,059	2,331	1,445	13,085
6 pm to 9 pm	1,283	1,202	1,187	1,291	1,221	1,664	1,194	9,042
9 pm to Midnight	918	732	774	822	939	1,396	1,262	6,843
Unknown	7	1	4	1	2	3	4	22
Total	8,693	8,983	8,934	9,318	9,263	10,929	9,398	65,518

**Table 18 - Crashes by Time of Day, Day of Week, and Crash Severity
(continued)**

All Crashes								
Midnight to 3 am	2,018	866	626	713	782	963	1,996	7,964
3 am to 6 am	1,139	575	407	519	506	591	1,052	4,789
6 am to 9 am	810	2,276	2,273	2,315	2,124	2,043	1,074	12,915
9 am to Noon	1,422	1,895	2,039	2,111	1,929	2,059	1,845	13,300
Noon to 3 pm	2,225	2,303	2,284	2,303	2,278	2,839	2,342	16,574
3 pm to 6 pm	2,303	3,060	3,132	3,150	3,231	3,774	2,316	20,966
6 pm to 9 pm	1,983	1,921	1,963	1,970	1,972	2,606	1,883	14,298
9 pm to Midnight	1,336	1,091	1,159	1,228	1,368	2,021	1,909	10,112
Unknown	8	1	4	1	2	4	5	25
Total	13,244	13,988	13,887	14,310	14,192	16,900	14,422	100,943

Table 19 - Crashes by Weather Conditions, Light Condition, and Crash Severity

	Light Condition					Total
	Daylight	Dark, But lighted	Dark	Dawn or Dusk	Other/Unknown	
Fatal Crashes						
Clear/Cloudy	226	127	114	22	0	489
Raining	14	18	12	1	0	45
Snow/Sleet	6	5	3	0	0	14
Other	1	3	4	1	0	9
Unknown	0	1	0	0	0	1
Total	247	154	133	24	0	558
Injury Crashes						
Clear/Cloudy	20,403	5,640	2,155	1,196	80	29,474
Raining	1,932	1,146	386	277	19	3,760
Snow/Sleet	757	204	120	68	6	1,155
Other	162	95	78	39	4	378
Unknown	53	17	8	.	22	100
Total	23,307	7,102	2,747	1,580	131	34,867
Property-Damage-Only Crashes						
Clear/Cloudy	34,513	12,733	3,994	2,444	339	54,023
Raining	3,458	2,724	825	526	52	7,585
Snow/Sleet	1,617	618	292	185	20	2,732
Other	289	189	118	77	5	678
Unknown	215	72	43	30	140	500
Total	40,092	16,336	5,272	3,262	556	65,518
All Crashes						
Clear/Cloudy	55,142	18,500	6,263	3,662	419	83,986
Foggy	5,404	3,888	1,223	804	71	11,390
Raining	2,380	827	415	253	26	3,901
Other	452	287	200	117	9	1,065
NA / Unknown	268	90	51	30	162	601
Total	63,646	23,592	8,152	4,866	687	100,943

Table 20 - Crashes by Crash Type, Relation to Roadway, and Crash Severity

Crash Type	Relation to Roadway					Total
	On Roadway	Off Roadway	Shoulder	Median	Other/Unknown	
Fatal Crashes						
Single	129	130	27	12	12	310
Multiple	223	7	12	4	2	248
Total	352	137	39	16	14	558
Injury Crashes						
Single	6,532	2,559	494	172	949	10,706
Multiple	23,011	240	188	26	666	24,131
Other/Unknown	13	6	0	0	11	30
Total	29,556	2,805	682	198	1,626	34,867
Property-Damage-Only Crashes						
Single	10,213	4,015	830	383	2,116	17,557
Multiple	43,327	515	565	25	3,420	47,852
Other/Unknown	58	31	2	0	18	109
Total	53,598	4,561	1,397	408	5,554	65,518
All Crashes						
Single	16,874	6,704	1,351	567	3,077	28,573
Multiple	66,561	762	765	55	4,088	72,231
Other/Unknown	71	37	2	0	29	139
Total	83,506	7,503	2,118	622	7,194	100,943

Table 21 - Crashes by Speed Limit Crash Type, and Crash Severity

Speed Limit	Crash Type						Total	
	Single Vehicle		Multiple Vehicle		Other/Unknown			
	Number	Percent	Number	Percent	Number	Percent	Number	Percent
Fatal Crashes								
30 mph or less	42	13.5	39	15.7	0	0.0	81	14.5
35 or 40 mph	67	21.6	55	22.2	0	0.0	122	21.9
45 or 50 mph	39	12.6	71	28.6	0	0.0	110	19.7
55 mph	44	14.2	56	22.6	0	0.0	100	17.9
60 mph or higher	11	3.5	7	2.8	0	0.0	18	3.2
No Statutory Limit / Unknown	107	34.5	20	8.1	0	0.0	127	22.7
Total	310	100.0	248	100.0	0	0.0	558	100.0
Injury Crashes								
30 mph or less	1,907	17.8	7,368	30.5	2	6.7	9,277	26.6
35 or 40 mph	2,343	21.9	8,164	33.8	4	13.3	10,511	30.1
45 or 50 mph	1,366	12.8	3,870	16.0	1	3.3	5,237	15.0
55 mph	1,273	11.9	2,814	11.7	0	0	4,087	11.7
60 mph or higher	563	5.3	721	3.0	0	0	1,284	3.7
No Statutory Limit / Unknown	3,254	30.4	1,194	4.9	23	76.7	4,471	12.8
Total	10,706	100.0	24,131	100.0	30	100.0	34,867	100.0
Property-Damage-Only Crashes								
30 mph or less	5,509	31.4	20,335	42.5	63	57.8	25,907	39.5
35 or 40 mph	4,407	25.1	12,373	25.9	17	15.6	16,797	25.6
45 or 50 mph	2,416	13.8	4,635	9.7	5	4.6	7,056	10.8
55 mph	2,447	13.9	3,751	7.8	3	2.8	6,201	9.5
60 mph or higher	1,138	6.5	1,063	2.2	1	0.9	2,202	3.4
No Statutory Limit / Unknown	1,640	9.3	5,695	11.9	20	18.4	7,355	11.2
Total	17,557	100.0	47,852	100.0	109	100.0	65,518	100.0
All Crashes								
30 mph or less	7,458	26.1	27,742	38.4	65	46.8	35,265	34.9
35 or 40 mph	6,817	23.9	20,592	28.5	21	15.1	27,430	27.2
45 or 50 mph	3,821	13.4	8,576	11.9	6	4.3	12,403	12.3
55 mph	3,764	13.2	6,621	9.2	3	2.2	10,388	10.3
60 mph or higher	1,712	6.0	1,791	2.5	1	0.7	3,504	3.5
No Statutory Limit / Unknown	5,001	17.5	6,909	9.6	43	31.0	11,953	11.9
Total	28,573	100.0	72,231	100.0	139	100.0	100,943	100.0

Table 22- Fatal Crashes by Speed Limit and Land Use - 2007

Speed Limit	Land Use						Total	
	Rural		Urban		Unknown		Number	Percent
	Number	Percent	Number	Percent	Number	Percent		
30 mph or less	14	17.5	38	47.5	28	35.0	80	100.0
35 or 40 mph	48	32.9	72	49.3	26	17.8	146	100.0
45 or 50 mph	71	55.0	42	32.6	16	12.4	129	100.0
55 mph	37	37.8	52	53.1	9	9.2	98	100.0
60 mph or higher	12	46.2	10	38.5	4	15.4	26	100.0
No Statutory Limit / Unknown	15	13.2	64	56.1	35	30.7	114	100.0
Total	197	33.2	278	46.9	118	19.9	593	100.0

Table 23 – Crashes by First Harmful Event, Manner of Collision, and Crash Severity

First Harmful Event	Crash Severity						Total	
	Fatal Crashes		Injury Crashes		Property-Damage-Only Crashes			
	Number	Percent	Number	Percent	Number	Percent	Number	Percent
Collision with Motor Vehicle in Transport								
Angle	49	8.8	5,759	16.5	6,772	10.3	12,580	12.5
Rear End	34	6.1	9,308	26.7	14,472	22.1	23,814	23.6
Sideswipe	16	2.9	1,642	4.7	4,690	7.2	6,348	6.3
Head On	94	16.8	4,090	11.7	3,906	6.0	8,090	8.0
Turn	0	0.0	380	1.1	1,109	1.7	1,489	1.5
Other/Unknown	6	1.1	974	2.8	2,838	4.3	3,818	3.8
<i>Subtotal</i>	199	35.7	22,153	63.5	33,787	51.6	56,139	55.6
Collision with Fixed Object								
Pole/Post	33	5.9	1,215	3.5	3,324	5.1	4,572	4.5
Culvert/Curb/Ditch	48	8.6	1,231	3.5	2,874	4.4	4,153	4.1
Shrubbery/Tree	58	10.4	1,099	3.2	1,389	2.1	2,546	2.5
Guard Rail	28	5.0	1,274	3.7	2,685	4.1	3,987	3.9
Embankment	11	2.0	405	1.2	517	0.8	933	0.9
Bridge	2	0.4	53	0.2	158	0.2	213	0.2
Building	1	0.2	134	0.4	584	0.9	719	0.7
Fence	2	0.4	136	0.4	769	1.2	907	0.9
Other/Unknown	5	0.9	212	0.6	806	1.2	1,023	1.0
<i>Subtotal</i>	188	33.7	5,759	16.5	13,106	20.0	19,053	18.9
Collision with Object Not Fixed								
Parked Motor Vehicle	9	1.6	970	2.8	11,243	17.2	12,222	12.1
Animal	2	0.4	208	0.6	1,211	1.8	1,421	1.4
Pedestrian	100	17.9	2,326	6.7	400	0.6	2,826	2.8
Pedalcyclist	7	1.3	655	1.9	241	0.4	903	0.9
Train	2	0.4	19	0.1	31	0.0	52	0.1
Other/Unknown	2	0.4	228	0.7	826	1.3	1,056	1.0
<i>Subtotal</i>	122	21.9	4,406	12.6	13,952	21.3	18,480	18.3
Noncollision								
Rollover	15	2.7	627	1.8	405	0.6	1,047	1.0
Other/Unknown	29	5.2	1,131	3.2	1,735	2.6	2,895	2.9
<i>Subtotal</i>	44	7.9	1,758	5.0	2,140	3.3	3,942	3.9
Other/Unknown	5	0.9	791	2.3	2,533	3.9	3,329	3.3
Total	558	100.0	34,867	100.0	65,518	100.0	100,943	100.0

Table 24 – Two-Vehicle Crashes by Vehicle Type and Crash Severity

Vehicle Type	Vehicle Type					
	Passenger Car	Light Truck	Large Truck	Motorcycle	Bus	Other/Unknown
Fatal Crashes (Total =235)						
Passenger Car	26	50	21	20	1	4
Light Truck		17	11	15	1	4
Large Truck			1	6	0	1
Motorcycle				1	0	2
Bus					0	0
Other/Unknown						13
Injury Crashes (Total=19,599)						
Passenger Car	6,492	7,514	805	379	203	520
Light Truck		2,212	393	252	136	237
Large Truck			45	22	12	16
Motorcycle				22	9	23
Bus					8	9
Other/Unknown						291
Property-Damage-Only Crashes (Total=42,640)						
Passenger Car	12,000	14,118	1,757	125	1,198	4,210
Light Truck		4,237	1,131	82	704	1,958
Large Truck			176	5	170	151
Motorcycle				4	2	18
Bus					86	99
Other/Unknown						409

Table 25 – Crashes and Percent Alcohol Related by Time of Day, Crash Type, and Crash Severity

Time of Day	Crash Type									Total		
	Single Vehicle			Multiple Vehicle			Unknown Number of Vehicles					
	No.	Alcohol Related	% Alcohol	No.	Alcohol Related	% Alcohol	No.	Alcohol Related	% Alcohol	No.	Alcohol Related	% Alcohol
Fatal Crashes												
Midnight to 3 am	54	36	66.7	26	18	69.2	0	0	0.0	80	54	67.5
3 am to 6 am	42	29	69.0	18	11	61.1	0	0	0.0	60	40	66.6
6 am to 9 am	21	3	14.3	19	1	5.3	0	0	0.0	40	4	10.0
9 am to Noon	18	3	16.7	18	2	11.1	0	0	0.0	36	5	13.9
Noon to 3 pm	25	4	16.0	39	3	7.7	0	0	0.0	64	7	10.9
3 pm to 6 pm	44	8	18.2	60	8	13.3	0	0	0.0	104	16	15.4
6 pm to 9 pm	50	16	32.0	36	16	44.4	0	0	0.0	86	32	37.2
9 pm to Midnight	56	29	51.8	32	16	50.0	0	0	0.0	88	45	51.1
Total	310	128	41.3	248	75	30.2	0	0	0.0	558	203	36.4
Injury Crashes												
Midnight to 3 am	1,196	505	42.2	993	278	28.0	3	0	0.0	2,192	783	35.7
3 am to 6 am	738	194	26.3	601	106	17.6	1	0	0.0	1,340	300	22.4
6 am to 9 am	1,307	64	4.9	3,191	53	1.7	4	0	0.0	4,502	117	2.6
9 am to Noon	1,170	37	3.2	3,380	55	1.6	2	0	0.0	4,552	92	2.0
Noon to 3 pm	1,492	63	4.2	4,647	102	2.2	11	0	0.0	6,150	165	2.7
3 pm to 6 pm	1,927	140	7.3	5,848	222	3.8	2	0	0.0	7,777	362	4.6
6 pm to 9 pm	1,603	226	14.1	3,562	279	7.8	5	0	0.0	5,170	505	9.8
9 pm to Midnight	1,270	345	27.2	1,909	323	16.9	2	1	50.0	3,181	669	21.0
Unknown	3	1	33.3	0	0	0.0	0	0	0.0	3	1	33.3
Total	10,706	1,575	14.7	24,131	1,418	5.9	30	1	3.3	34,867	2,994	8.6
Property-Damage-Only Crashes												
Midnight to 3 am	2,562	699	27.3	3,110	639	20.5	20	3	15.0	5,692	1,341	23.6
3 am to 6 am	1,800	323	17.9	1,577	199	12.6	12	0	0.0	3,389	522	15.4
6 am to 9 am	2,166	80	3.7	6,197	101	1.6	10	0	0.0	8,373	181	2.2
9 am to Noon	2,012	46	2.3	6,683	120	1.8	17	0	0.0	8,712	166	1.9
Noon to 3 pm	2,068	74	3.6	8,281	169	2.0	11	0	0.0	10,360	243	2.3
3 pm to 6 pm	2,370	115	4.9	10,701	318	3.0	14	0	0.0	13,085	433	3.3
6 pm to 9 pm	2,188	213	9.7	6,838	467	6.8	16	1	6.3	9,042	681	7.5
9 pm to Midnight	2,387	408	17.1	4,448	645	14.5	8	1	12.5	6,843	1,054	15.4
Unknown	4	0	0.0	17	0	0.0	1	0	0.0	22	0	0.0
Total	17,557	1,958	11.2	47,852	2,658	5.6	109	5	4.6	65,518	4,621	7.0

Table 25 – Crashes and Percent Alcohol Related by Time of Day, Crash Type, and Crash Severity (continued)

All Crashes												
Midnight to 3 am	3,812	1,240	32.5	4,129	935	22.6	23	3	13.0	7,964	2,178	27.3
3 am to 6 am	2,580	546	21.2	2,196	316	14.4	13	0	0.0	4,789	862	18.0
6 am to 9 am	3,494	147	4.2	9,407	155	1.6	14	0	0.0	12,915	302	2.3
9 am to Noon	3,200	86	2.7	10,081	177	1.8	19	0	0.0	13,300	263	2.0
Noon to 3 pm	3,585	141	3.9	12,967	274	2.1	22	0	0.0	16,574	415	2.5
3 pm to 6 pm	4,341	263	6.1	16,609	548	3.3	16	0	0.0	20,966	811	3.9
6 pm to 9 pm	3,841	455	11.8	10,436	762	7.3	21	1	4.8	14,298	1,218	8.5
9 pm to Midnight	3,713	782	21.1	6,389	984	15.4	10	2	20.0	10,112	1,768	17.5
Unknown	7	1	14.3	17	0	0.0	1	0	0.0	25	1	4.0
Total	28,573	3,661	12.8	72,231	4,151	5.7	139	6	4.3	100,943	7,818	7.7

Chapter 3: 2007 Vehicles

Table 26 - Vehicles Involved in Crashes by Vehicle Type and Crash Severity

Vehicle Type	Crash Severity						Total	
	Fatal		Injury		Property Damage Only			
	Number	Percent	Number	Percent	Number	Percent	Number	Percent
Passenger Car	404	45.5	37,097	57.1	65,496	54.6	102,997	55.4
Light Truck	286	32.2	22,320	34.3	38,326	31.9	60,932	32.8
Large Truck	71	8.0	2,043	3.1	4,909	4.1	7,023	3.8
Motorcycle	98	11.0	1,593	2.5	375	0.3	2,066	1.1
Bus	6	0.7	559	0.9	2,629	2.2	3,194	1.7
Other/Unknown	22	2.5	1,405	2.2	8,309	6.9	9,736	5.2
Total	887	100.0	65,017	100.0	120,044	100.0	185,948	100.0

Table 27 – Vehicles Involved in Fatal Crashes by Body Type

Body Type	Number	Percent
Passenger Cars	404	45.5
Automobile	396	44.6
Station Wagon	8	0.9
Light Trucks	286	32.2
Recreational Vehicle	136	15.3
Pickup Truck	109	12.3
Van	41	4.6
Large Trucks	71	8.0
Single Truck 2 Axles	26	2.9
Single Truck 3 Axles	8	0.9
Truck Tractor	37	4.2
Motorcycles	98	11.1
Buses	6	0.7
Transit Bus	4	0.5
School Bus	2	0.2
Other Vehicles	16	1.8
Police Vehicle/Emergency	2	0.2
Police Vehicle/Non-Emergency	4	0.5
Other	9	1.1
Unknown	6	0.7
Total	887	100.0

Table 28 – Vehicles Involved in Crashes by Vehicle Type, Rollover Occurrence, and Crash Severity (Excludes Motorcycles)

Vehicle Type	Rollover Occurrence						Total	
	Yes		No		Unknown		Number	Percent
	Number	Percent	Number	Percent	Number	Percent		
Fatal Crashes								
Passenger Car	3	0.7	401	99.3	0	0.0	404	100.0
Light Truck								
Pickup	3	2.8	106	97.2	0	0.0	109	100.0
Van	1	2.4	40	97.6	0	0.0	41	100.0
Utility	4	2.9	132	97.1	0	0.0	136	100.0
Large Truck	2	2.8	69	97.2	0	0.0	71	100.0
Bus	0	0	6	100.0	0	0.0	6	100.0
Other/Unknown	1	4.5	21	95.5	0	0.0	22	100.0
Total	14	1.8	775	98.2	0	0.0	789	100.0
Injury Crashes								
Passenger Car	159	0.4	36,909	99.5	29	0.1	37,097	100.0
Light Truck								
Pickup	67	1.1	6,040	98.8	6	0.1	6,113	100.0
Van	24	0.5	5,139	99.5	3	0.1	5,166	100.0
Utility	146	1.3	10,885	98.6	10	0.1	11,041	100.0
Large Truck	48	2.3	1,995	97.7	0	0.0	2,043	100.0
Bus	0	0	559	100.0	0	0.0	559	100.0
Other/Unknown	20	1.4	1,380	98.2	5	0.4	1,405	100.0
Total	464	0.7	62,907	99.2	53	0.1	63,424	100.0
Property-Damage-Only Crashes								
Passenger Car	138	0.2	65,248	99.6	110	0.2	65,496	100.0
Light Truck								
Pickup	68	0.6	11,542	99.3	14	0.1	11,624	100.0
Van	23	0.3	8,868	99.7	7	0.1	8,898	100.0
Utility	120	0.7	17,667	99.2	17	0.1	17,804	100.0
Large Truck	46	0.9	4,857	98.9	6	0.1	4,909	100.0
Bus	0	0	2,629	100.0	0	0.0	2,629	100.0
Other/Unknown	3	0.0	8,260	99.4	46	0.6	8,309	100.0
Total	398	0.3	119,071	99.5	200	0.2	119,669	100.0

**Table 28 – Vehicles Involved in Crashes by Vehicle Type, Rollover Occurrence, and Crash Severity (Excludes Motorcycles)
(continued)**

All Crashes								
Passenger Car	300	0.3	102,558	99.6	139	0.1	102,997	100.0
Light Truck								
Pickup	138	0.8	17,688	99.1	20	0.1	17,846	100.0
Van	48	0.3	14,047	99.6	10	0.1	14,105	100.0
Utility	270	0.9	28,684	99.0	27	0.1	28,981	100.0
Large Truck	96	1.4	6,921	98.5	6	0.1	7,023	100.0
Bus	0.	0	3,194	100.0	0	0.0	3,194	100.0
Other/Unknown	24	0.2	9,661	99.2	51	0.5	9,736	100.0
Total	876	0.5	182,753	99.4	253	0.1	183,882	100.0

Table 29 – Vehicles Involved in Crashes by Vehicle Type, Fire Occurrence, and Crash Severity

Vehicle Type	Fire Occurrence				Total	
	Yes		No			
	Number	Percent	Number	Percent	Number	Percent
Fatal Crashes						
Passenger Car	13	3.2	391	96.8	404	100.0
Light Truck	4	1.4	282	98.6	286	100.0
Large Truck	4	5.6	67	94.4	71	100.0
Bus	0	0.0	6	100.0	6	100.0
Other/Unknown	0	0.0	22	100.0	22	100.0
Motorcycle	2	2.0	96	98.0	98	100.0
Total	23	2.6	864	97.4	887	100.0
Injury Crashes						
Passenger Car	62	0.2	37,035	99.8	37,097	100.0
Light Truck	31	0.1	22,289	99.9	22,320	100.0
Large Truck	10	0.5	2,033	99.5	2,043	100.0
Bus	0	0.0	559	100.0	559	100.0
Other/Unknown	3	0.2	1,402	99.8	1,405	100.0
Motorcycle	3	0.2	1,590	99.8	1,593	100.0
Total	109	0.2	64,908	99.8	65,017	100.0
Property-Damage-Only Crashes						
Passenger Car	59	0.1	65,437	99.9	65,496	100.0
Light Truck	36	0.1	38,290	99.9	38,326	100.0
Large Truck	9	0.2	4,900	99.8	4,909	100.0
Bus	0	0.0	2,629	100.0	2,629	100.0
Other/Unknown	5	0.1	8,304	99.9	8,309	100.0
Motorcycle	1	0.3	374	99.7	375	100.0
Total	110	0.1	119,934	99.9	120,044	100.0
All Crashes						
Passenger Car	134	0.1	102,863	99.9	102,997	100.0
Light Truck	71	0.1	60,861	99.9	60,932	100.0
Large Truck	23	0.3	7,000	99.7	7,023	100.0
Bus	0	0.0	3,194	100.0	3,194	100.0
Other/Unknown	8	0.1	9,728	99.8	9,736	100.0
Motorcycle	6	0.3	2,060	99.7	2,066	100.0
Total	242	0.1	185,706	99.9	185,948	100.0

Table 30 – Vehicles Involved in Single- and Two-Vehicle Crashes by Movement and Crash Severity

Movement	Crash Severity						Total	
	Fatal		Injury		Property Damage Only			
	Number	%	Number	%	Number	%	Number	%
Moving Constant Speed	430	61.6	24,616	49.3	41,450	40.2	66,496	43.3
Accelerating	36	5.2	3,183	6.4	5,329	5.2	8,548	5.6
Slowing or Stopping	18	2.6	6,166	12.4	11,828	11.5	18,012	11.7
Starting from Lane	10	1.4	1,504	3.0	2,290	2.2	3,804	2.5
Starting from Park	2	0.3	329	0.7	1,142	1.1	1,473	1.0
Stopped in Traffic Lane	8	1.1	2,792	5.6	5,884	5.7	8,684	5.7
Changing Lane	25	3.6	1,042	2.1	2,326	2.3	3,393	2.2
Passing	2	0.3	199	0.4	691	0.7	892	0.6
Parking	0	0.0	72	0.1	523	0.5	595	0.4
Parked	12	1.7	697	1.4	9,892	9.6	10,601	6.9
Backing	0	0.0	400	0.8	3,137	3.0	3,537	2.3
Making Left Turn	40	5.7	5,140	10.3	6,890	6.7	12,070	7.9
Making Right Turn	4	0.6	1,000	2.0	2,614	2.5	3,618	2.4
Right Turn on Red	0	0.0	25	0.1	56	0.1	81	0.1
Making U Turn	5	0.7	341	0.7	609	0.6	955	0.6
Skidding	66	9.5	1,627	3.3	2,317	2.2	4,010	2.6
Driverless Moving Vehicle	0	0.0	17	0.0	142	0.1	159	0.1
Other/Unknown	40	5.7	773	1.5	5,867	5.7	6,680	4.3
Total	698	100.0	49,923	100.0	102,987	100.0	153,608	100.0

Table 31 – Passenger Cars Involved in Crashes by First Harmful Event and Crash Severity

First Harmful Event	Crash Severity						Total	
	Fatal		Injury		Property Damage Only			
	Number	Percent	Number	Percent	Number	Percent	Number	Percent
Collision with Motor Vehicle in Transport by Initial Impact								
Front	107	26.5	14,987	40.4	19,665	30.0	34,759	33.7
Left Side	31	7.7	3,185	8.6	4,904	7.5	8,120	7.9
Right Side	26	6.4	2,692	7.3	4,123	6.3	6,841	6.6
Rear	22	5.4	6,572	17.7	8,499	13.0	15,093	14.7
Other/Unknown	11	2.7	1,272	3.4	3,317	5.1	4,600	4.4
<i>Subtotal</i>	<i>197</i>	<i>48.8</i>	<i>28,708</i>	<i>77.4</i>	<i>40,508</i>	<i>61.8</i>	<i>69,413</i>	<i>67.4</i>
Collision with Fixed Object	120	29.7	3,554	9.6	7,936	12.1	11,610	11.3
Collision with Object Not Fixed	65	16.1	3,270	8.8	13,196	20.1	16,531	16.0
Non Collision	19	4.7	759	2.0	1,171	1.8	1,949	1.9
Unknown	3	0.7	806	2.2	2,685	4.1	3,494	3.4
Total	404	100.0	37,097	100.0	65,496	100.0	102,997	100.0

Table 32 – Passenger Cars Involved in Crashes by Initial Point of Impact, Crash Severity, and Crash Type

	Crash Severity						Total	
	Fatal		Injury		Property Damage Only			
	Number	Percent	Number	Percent	Number	Percent	Number	Percent
Single-Vehicle Crashes								
Front	103	63.6	3,715	63.6	6,725	67.5	10,543	66.0
Left Side	24	14.8	473	8.1	821	8.2	1,318	8.3
Right Side	18	11.1	570	9.8	801	8.0	1,389	8.7
Rear	2	1.2	202	3.5	391	3.9	595	3.7
Noncollision	2	1.2	181	3.1	136	1.4	319	2.0
Other/Unknown	13	8.1	699	12.0	1,091	11.0	1,803	11.3
Total	162	100.0	5,840	100.0	9,965	100.0	15,967	100.0
Multiple-Vehicle Crashes								
Front	129	53.3	16,210	51.9	24,454	44.1	40,793	46.9
Left Side	40	16.5	3,556	11.4	7,928	14.3	11,524	13.2
Right Side	30	12.4	2,918	9.3	5,568	10.0	8,516	9.8
Rear	24	9.9	7,068	22.6	11,689	21.1	18,781	21.6
Noncollision	2	0.8	24	0.1	11	0.0	37	0.0
Other/Unknown	17	7.0	1,470	4.7	5,836	10.5	7,323	8.4
Total	242	100.0	31,246	100.0	55,486	100.0	86,974	100.0
Crashes with Unknown Number of Vehicles Involved								
Front	0	0.0	6	54.5	33	73.3	39	69.6
Left Side	0	0.0	1	9.1	2	4.4	3	5.4
Right Side	0	0.0	0	0.0	2	4.4	2	3.6
Rear	0	0.0	3	27.3	5	11.1	8	14.3
Noncollision	0	0.0	0	0.0	0	0.0	0	0.0
Other/Unknown	0	0.0	1	9.1	3	6.7	4	7.2
Total	0	0.0	11	100.0	45	100.0	56	100.0
All Crashes								
Front	232	57.4	19,931	53.7	31,212	47.7	51,375	49.9
Left Side	64	15.8	4,030	10.9	8,751	13.4	12,845	12.5
Right Side	48	11.9	3,488	9.4	6,371	9.7	9,907	9.6
Rear	26	6.4	7,273	19.6	12,085	18.5	19,384	18.8
Noncollision	4	1.0	205	0.6	147	0.2	356	0.3
Other/Unknown	30	7.4	2,170	5.8	6,930	10.6	9,130	8.9
Total	404	100.0	37,097	100.0	65,496	100.0	102,997	100.0

Table 33 – Light Trucks Involved in Crashes by First Harmful Event and Crash Severity

First Harmful Event	Crash Severity						Total	
	Fatal		Injury		Property Damage Only			
	Number	Percent	Number	Percent	Number	Percent	Number	Percent
Collision with Motor Vehicle in Transport by Initial Impact								
Front	90	31.5	8,941	40.1	10,456	27.3	19,487	32.0
Left Side	18	6.3	1,663	7.5	2,696	7.0	4,377	7.2
Right Side	21	7.3	1,515	6.8	2,506	6.5	4,042	6.6
Rear	16	5.6	4,280	19.2	6,712	17.5	11,008	18.1
Other/Unknown	11	3.8	705	3.1	1,828	4.8	2,544	4.2
<i>Subtotal</i>	<i>156</i>	<i>54.5</i>	<i>17,104</i>	<i>76.6</i>	<i>24,198</i>	<i>63.1</i>	41,458	68.0
Collision with Fixed Object	55	19.2	2,107	9.4	4,173	10.9	6,335	10.4
Collision with Object Not Fixed	48	16.8	2,028	9.1	7,582	19.8	9,658	15.9
Non Collision	22	7.7	609	2.7	874	2.3	1,505	2.5
Unknown	5	1.7	472	2.1	1,499	3.9	1,976	3.2
Total	286	100.0	22,320	100.0	38,326	100.0	60,932	100.0

Table 34 – Light Trucks Involved in Crashes by Initial Point of Impact, Crash Severity, and Crash Type

	Crash Severity						Total	
	Fatal		Injury		Property Damage Only			
	Number	Percent	Number	Percent	Number	Percent	Number	Percent
Single-Vehicle Crashes								
Front	56	65.1	2,242	63.3	3,584	64.7	5,882	64.2
Left Side	8	9.3	276	7.8	438	7.9	722	7.9
Right Side	7	8.1	361	10.2	497	9.0	865	9.4
Rear	0	0.0	115	3.2	251	4.5	366	4.0
Noncollision	5	5.8	181	5.1	167	3.0	353	3.9
Other/Unknown	10	11.6	368	10.4	600	10.8	978	10.7
Total	86	100.0	3,543	100.0	5,537	100.0	9,166	100.0
Multiple-Vehicle Crashes								
Front	110	55.0	9,686	51.6	12,855	39.3	22,651	43.8
Left Side	23	11.5	1,894	10.1	4,288	13.1	6,205	12.0
Right Side	23	11.5	1,640	8.7	3,402	10.4	5,065	9.8
Rear	25	12.5	4,687	25.0	9,105	27.8	13,817	26.7
Noncollision	0	0.0	22	0.1	13	0.0	35	0.1
Other/Unknown	19	9.5	832	4.4	3,088	9.4	3,939	7.6
Total	200	100.0	18,761	100.0	32,751	100.0	51,712	100.0
Crashes with Unknown Number of Vehicles Involved								
Front	0	0.0	5	31.3	22	57.9	27	50.0
Left Side	0	0.0	4	25.0	2	5.3	6	11.1
Right Side	0	0.0	1	6.3	0	0.0	1	1.9
Rear	0	0.0	2	12.5	10	26.3	12	22.2
Noncollision	0	0.0	0	0.0	0	0.0	0	0.0
Other/Unknown	0	0.0	4	25.0	4	10.5	8	14.8
Total	0	0.0	16	100.0	38	100.0	54	100.0

Table 34 – Light Trucks Involved in Crashes by Initial Point of Impact, Crash Severity, and Crash Type (continued)

All Crashes								
Front	166	58.0	11,933	53.5	16,461	42.9	28,560	46.9
Left Side	31	10.8	2,174	9.7	4,728	12.3	6,933	11.4
Right Side	30	10.5	2,002	9.0	3,899	10.2	5,931	9.7
Rear	25	8.7	4,804	21.5	9,366	24.4	14,195	23.3
Noncollision	5	1.7	203	0.9	180	0.5	388	0.6
Other/Unknown	29	10.1	1,204	5.3	3,692	9.6	4,925	8.0
Total	286	100.0	22,320	100.0	38,326	100.0	60,932	100.0

Table 35 – Large Trucks Involved in Crashes by First Harmful Event and Crash Severity

First Harmful Event	Crash Severity						Total	
	Fatal		Injury		Property Damage Only			
	Number	Percent	Number	Percent	Number	Percent	Number	Percent
Collision with Motor Vehicle in Transport by Initial Impact								
Front	24	33.8	803	39.3	900	18.3	1,727	24.6
Left Side	2	2.8	172	8.4	387	7.9	561	8.0
Right Side	4	5.6	173	8.5	401	8.2	578	8.2
Rear	6	8.5	216	10.6	448	9.1	670	9.5
Other/Unknown	5	7.0	238	11.6	666	13.5	908	13.0
<i>Subtotal</i>	<i>41</i>	<i>57.7</i>	<i>1,602</i>	<i>78.4</i>	<i>2,802</i>	<i>57.1</i>	<i>4,445</i>	<i>63.3</i>
Collision with Fixed Object	6	8.5	116	5.7	712	14.5	834	11.9
Collision with Object Not Fixed	16	22.5	176	8.6	1,011	20.6	1,203	17.1
Non Collision	7	9.9	94	4.6	155	3.2	256	3.6
Unknown	1	1.4	55	2.7	229	4.7	285	4.1
Total	71	100.0	2,043	100.0	4,909	100.0	7,023	100.0

Table 36 – Large Trucks Involved in Crashes by Initial Point of Impact, Crash Severity, and Crash Type

	Crash Severity						Total	
	Fatal		Injury		Property Damage Only			
	Number	Percent	Number	Percent	Number	Percent	Number	Percent
Single-Vehicle Crashes								
Front	11	84.6	96	44.2	228	25.3	335	29.6
Left Side	0	0.0	25	11.5	61	6.8	86	7.6
Right Side	0	0.0	28	12.9	122	13.6	150	13.3
Rear	0	0.0	11	5.1	84	9.3	95	8.4
Noncollision	0	0.0	23	10.6	24	2.7	47	4.2
Other/Unknown	2	15.4	34	15.6	381	42.3	417	36.9
Total	13	100.0	217	100.0	900	100.0	1,130	100.0
Multiple-Vehicle Crashes								
Front	30	51.7	854	46.8	1,108	27.7	1,992	33.8
Left Side	3	5.2	206	11.3	510	12.7	719	12.2
Right Side	5	8.6	192	10.5	544	13.6	741	12.6
Rear	8	13.8	276	15.1	756	18.9	1,040	17.7
Noncollision	1	1.7	3	0.2	4	0.1	8	0.1
Other/Unknown	11	18.9	295	16.2	1,082	27.1	1,388	23.6
Total	58	100.0	1,826	100.0	4,004	100.0	5,888	100.0
Crashes with Unknown Number of Vehicles Involved								
Front	0	0.0	0	0.0	4	80.0	4	80.0
Other/Unknown	0	0.0	0	0.0	1	20.0	1	20.0
Total	0	0.0	0	0.0	5	100.0	5	100.0
All Crashes								
Front	41	57.7	950	46.5	1,340	27.3	2,331	33.2
Left Side	3	4.2	231	11.3	571	11.6	805	11.5
Right Side	5	7.0	220	10.8	666	13.6	891	12.7
Rear	8	11.3	287	14.0	840	17.1	1,135	16.2
Noncollision	1	1.4	26	1.3	28	0.6	55	0.8
Other/Unknown	13	18.3	329	16.1	1,464	29.9	1,806	25.7
Total	71	100.0	2,043	100.0	4,909	100.0	7,023	100.0

Table 37 – Large Trucks Involved in Crashes by Truck Type, Rollover Occurrence, and Crash Severity

	Rollover Occurrence						Total	
	Yes		No		Unknown		Number	Percent
	Number	Percent	Number	Percent	Number	Percent		
Fatal Crashes								
Single Truck 2 Axles	1	3.8	25	96.2	0	0.0	26	100.0
Single Truck 3 Axles	0	0.0	8	100.0	0	0.0	8	100.0
Truck Tractor	1	2.7	36	97.3	0	0.0	37	100.0
Total	2	2.8	69	97.2	0	0.0	71	100.0
Injury Crashes								
Single Truck 2 Axles	12	1.3	914	98.7	0	0.0	926	100.0
Single Truck 3 Axles	13	4.1	305	95.9	0	0.0	318	100.0
Truck Tractor	23	2.9	776	97.1	0	0.0	799	100.0
Total	48	2.3	1,995	97.7	0	0.0	2,043	100.0
Property-Damage-Only Crashes								
Single Truck 2 Axles	17	0.7	2,517	99.2	4	0.2	2,538	100.0
Single Truck 3 Axles	9	1.3	707	98.6	1	0.1	717	100.0
Truck Tractor	20	1.2	1,633	98.7	1	0.1	1,654	100.0
Total	46	0.9	4,857	98.9	6	0.1	4,909	100.0
All Crashes								
Single Truck 2 Axles	30	0.9	3,456	99.0	4	0.1	3,490	100.0
Single Truck 3 Axles	22	2.1	1,020	97.8	1	0.1	1,043	100.0
Truck Tractor	44	1.8	2,445	98.2	1	0.0	2,490	100.0
Total	96	1.4	6,921	98.5	6	0.1	7,023	100.0

Table 38 – Motorcycles Involved in Crashes by First Harmful Event and Crash Severity

First Harmful Event	Crash Severity						Total	
	Fatal		Injury		Property Damage Only			
	Number	Percent	Number	Percent	Number	Percent	Number	Percent
Collision with Motor Vehicle in Transport by Initial Impact								
Front	32	32.7	375	23.5	83	22.1	490	23.7
Left Side	5	5.1	86	5.4	15	4.0	106	5.1
Right Side	3	3.1	83	5.2	20	5.3	106	5.1
Rear	2	2.0	54	3.4	25	6.7	81	3.9
Other/Unknown	10	10.2	118	7.4	48	12.8	176	8.6
<i>Subtotal</i>	<i>52</i>	<i>53.1</i>	<i>716</i>	<i>44.9</i>	<i>191</i>	<i>50.9</i>	959	46.4
Collision with Fixed Object	30	30.6	276	17.3	36	9.6	342	16.6
Collision with Object Not Fixed	5	5.1	153	9.6	86	22.9	244	11.8
Non Collision	10	10.2	355	22.3	45	12.0	410	19.8
Unknown	1	1.0	93	5.8	17	4.5	111	5.4
Total	98	100.0	1,593	100.0	375	100.0	2,066	100.0

Table 39 – Motorcycles Involved in Crashes by Initial Point of Impact, Crash Severity, and Crash Type

	Crash Severity						Total	
	Fatal		Injury		Property Damage Only			
	Number	Percent	Number	Percent	Number	Percent	Number	Percent
Single-Vehicle Crashes								
Front	13	33.3	237	31.0	43	41.7	293	32.3
Left Side	4	10.3	150	19.6	16	15.5	170	18.7
Right Side	6	15.4	130	17.0	14	13.6	150	16.5
Rear	1	2.6	4	0.5	3	2.9	8	0.9
Noncollision	11	28.2	103	13.5	9	8.7	123	13.6
Other/Unknown	4	10.3	141	18.5	18	17.5	163	18.0
Total	39	100.0	765	100.0	103	100.0	907	100.0
Multiple-Vehicle Crashes								
Front	34	57.6	431	52.1	113	41.5	578	49.9
Left Side	6	10.2	102	12.3	27	9.9	135	11.7
Right Side	5	8.5	96	11.6	29	10.7	130	11.2
Rear	2	3.4	58	7.0	30	11.0	90	7.8
Noncollision	5	8.5	28	3.4	3	1.1	36	3.1
Other/Unknown	7	11.9	112	13.6	70	25.7	189	16.3
Total	59	100.0	827	100.0	272	100.0	1,158	100.0
Crashes with Unknown Number of Vehicles Involved								
Front	0	0.0	1	100.0	0	0.0	1	100.0
Total	0	0.0	1	100.0	0	0.0	1	100.0
All Crashes								
Front	47	48.0	669	42.0	156	41.6	872	42.2
Left Side	10	10.2	252	15.8	43	11.5	305	14.8
Right Side	11	11.2	226	14.2	43	11.5	280	13.6
Rear	3	3.1	62	3.9	33	8.8	98	4.7
Noncollision	16	16.3	131	8.2	12	3.2	159	7.7
Other/Unknown	11	11.2	253	15.9	88	23.4	352	17.0
Total	98	100.0	1,593	100.0	375	100.0	2,066	100.0

Table 40 – Buses Involved in Crashes by First Harmful Event and Crash Severity

First Harmful Event	Crash Severity						Total	
	Fatal		Injury		Property Damage Only			
	Number	Percent	Number	Percent	Number	Percent	Number	Percent
Collision with Motor Vehicle in Transport by Initial Impact								
Front	2	33.3	204	36.5	531	20.2	737	23.1
Left Side	0	0.0	62	11.1	382	14.5	444	13.9
Right Side	0	0.0	49	8.8	208	7.9	257	8.0
Rear	1	16.7	88	15.7	471	17.9	560	17.5
Other/Unknown	0	0.0	25	4.5	167	6.4	192	6.0
<i>Subtotal</i>	<i>3</i>	<i>50.0</i>	<i>428</i>	<i>76.6</i>	<i>1,759</i>	<i>66.9</i>	2,190	68.6
Collision with Fixed Object	0	0.0	25	4.5	163	6.2	188	5.9
Collision with Object Not Fixed	3	50.0	85	15.2	572	21.8	660	20.7
Non Collision	0	0.0	10	1.8	7	0.3	17	0.5
Unknown	0	0.0	11	2.0	128	4.9	139	4.4
Total	6	100.0	559	100.0	2,629	100.0	3,194	100.0

Table 41 – Buses Involved in Crashes by Initial Point of Impact, Crash Severity, and Crash Type

	Crash Severity						Total	
	Fatal		Injury		Property Damage Only			
	Number	Percent	Number	Percent	Number	Percent	Number	Percent
Single-Vehicle Crashes								
Front	2	66.7	34	41.0	34	18.1	70	25.5
Left Side	0	0.0	6	7.2	12	6.4	18	6.6
Right Side	0	0.0	21	25.3	62	33.0	83	30.3
Rear	0	0.0	2	2.4	37	19.7	39	14.2
Other/Unknown	1	33.3	20	24.1	43	22.9	64	23.4
Total	3	100.0	83	100.0	188	100.0	274	100.0
Multiple-Vehicle Crashes								
Front	2	66.7	221	46.5	635	26.1	858	29.4
Left Side	0	0.0	68	14.3	472	19.4	540	18.5
Right Side	0	0.0	51	10.7	378	15.5	429	14.7
Rear	1	33.3	106	22.3	685	28.1	792	27.2
Other/Unknown	0	0.0	29	6.1	266	10.9	295	10.1
Total	3	100.0	475	100.0	2,436	100.0	2,914	100.0
Crashes with Unknown Number of Vehicles Involved								
Front	0	0.0	1	100.0	1	20.0	2	33.3
Right Side	0	0.0	0	0.0	1	20.0	1	16.7
Rear	0	0.0	0	0.0	1	20.0	1	16.7
Other/Unknown	0	0.0	0	0.0	2	40.0	2	33.4
Total	0	0.0	1	100.0	5	100.0	6	100.0
All Crashes								
Front	4	66.7	256	45.8	670	25.5	930	29.1
Left Side	0	0.0	74	13.2	484	18.4	558	17.5
Right Side	0	0.0	72	12.9	441	16.8	513	16.1
Rear	1	16.7	108	19.3	723	27.5	832	26.0
Other/Unknown	1	16.7	49	8.8	311	11.8	361	11.3
Total	6	100.0	559	100.0	2,629	100.0	3,194	100.0

Chapter 4: 2007 People

Table 42 - Persons Killed or Injured by Person Type and Injury Severity

Person Type	Person Killed	Person Injured by Injury Severity				Total Killed or Injured
		Incapacitating	Nonincapacitating	Possible	Total Injured	
Vehicle Occupants						
Driver	283	3,331	12,632	16,963	32,926	33,209
Passenger	115	1,073	4,734	7,871	13,678	13,793
Occupant of Unknown Body Type	0	0	44	107	151	151
<i>Subtotal</i>	<i>398</i>	<i>4,404</i>	<i>17,410</i>	<i>24,941</i>	46,755	47,153
Motorcycle Riders	97	419	860	378	1,657	1,754
Nonmotorists						
Pedestrian	110	478	1,170	878	2,526	2,636
Pedalcyclist	7	73	357	206	636	643
Other/Unknown	3	19	79	57	155	158
<i>Subtotal</i>	<i>120</i>	<i>570</i>	<i>1,606</i>	<i>1,141</i>	3,317	3,437
Total	615	5,393	19,876	26,460	51,729	52,344

Table 43 - Persons Killed or Injured, by Age and Injury Severity

Age(Year)	Persons Killed	Person Injured by Injury Severity				Total Killed or Injured
		Incapacitating	Nonincapacitating	Possible	Total Injured	
<5	3	53	229	783	1,065	1,068
5-9	4	88	423	796	1,307	1,311
10-15	19	193	798	1,110	2,101	2,120
16-20	81	757	3,026	3,495	7,278	7,359
21-24	80	619	2,185	2,723	5,527	5,607
25-34	109	997	3,613	4,872	9,482	9,591
35-44	102	924	3,301	4,262	8,487	8,589
45-54	94	845	2,760	3,749	7,354	7,448
55-64	57	401	1,672	2,119	4,192	4,249
65-74	30	258	800	948	2,006	2,036
75+	34	185	676	814	1,675	1,709
Unknown	2	73	393	789	1,255	1,257
Total	615	5,393	19,876	26,460	51,729	52,344

Table 44 - Persons Killed or Injured by Sex and Injury Severity

Gender	Person Killed	Person Injured by Injury Severity				Total Killed or Injured
		Incapacitating	Nonincapacitating	Possible	Total Injured	
Male	452	2,954	9,907	12,497	25,358	25,810
Female	163	2,433	9,928	13,871	26,232	26,395
Unknown	0	6	41	92	139	139
Total	615	5,393	19,876	26,460	51,729	52,344

Table 45 - Persons Killed or Injured and Fatality and Injury Rates per 100,000 Population by Age and Sex

Age(Years)	Male			Female			Total		
	Killed	Population (Thousands)	Rate	Killed	Population (Thousands)	Rate	Killed	Population (Thousands)	Rate
<5	1	192.6	0.52	2	184.2	1.08	3	376.7	0.80
5-9	3	183.1	1.64	1	175.8	0.57	4	358.8	1.11
10-15	14	233.0	6.00	5	223.8	2.23	19	456.8	4.16
16-20	55	204.4	26.91	26	198.0	13.13	81	402.5	20.12
21-24	69	153.5	44.95	11	150.3	7.32	80	303.8	26.33
25-34	90	356.0	25.28	19	365.5	5.20	109	721.4	15.11
35-44	74	410.4	18.03	28	437.6	6.40	102	848.0	12.03
45-54	72	415.1	17.34	22	449.7	4.89	94	864.8	10.87
55-64	37	295.4	12.52	20	328.0	6.10	57	623.5	9.14
65-74	18	159.8	11.26	12	191.4	6.27	30	350.2	8.57
75+	18	116.2	15.49	16	195.4	8.19	34	311.6	10.91
Unknown	1	*	*	1	*	*	2	*	*
Total	452	2,718.6	16.63	163	2,899.8	5.62	615	5,618.3	10.95

Age(Years)	Male			Female			Total		
	Injured	Population (Thousands)	Rate	Injured	Population (Thousands)	Rate	Injured	Population (Thousands)	Rate
<5	547	192.6	284.01	515	184.2	279.59	1,062	376.7	281.92
5-9	696	183.1	380.12	605	175.8	344.14	1,301	358.8	362.60
10-15	1,054	233.0	452.36	1,040	223.8	464.70	2,094	456.8	458.41
16-20	3,562	204.4	1,742.66	3,708	198.0	1,872.73	7,270	402.5	1,806.21
21-24	2,780	153.5	1,811.07	2,737	150.3	1,821.02	5,517	303.8	1,816.00
25-34	4,723	356.0	1,326.68	4,751	365.5	1,299.86	9,474	721.4	1,313.28
35-44	4,228	410.4	1,030.21	4,251	437.6	971.44	8,479	848.0	999.88
45-54	3,551	415.1	855.46	3,802	449.7	845.45	7,353	864.8	850.25
55-64	1,973	295.4	667.91	2,215	328.0	675.30	4,188	623.5	671.69
65-74	888	159.8	555.69	1,114	191.4	582.03	2,002	350.2	571.67
75+	731	116.2	629.09	934	195.4	478.00	1,665	311.6	534.34
Unknown	625	*	*	560	*	*	1,185	*	*
Total	25,358	2,718.6	932.76	26,232	2,899.8	904.61	51,590	5,618.3	918.25

Table 46 - Persons Killed or Injured in Crashes by Weather Condition and Light Condition

Weather Condition	Light Condition				Unknown	Total
	Daylight	Dark, But lighted	Dark	Dawn or Dusk		
Persons Killed						
Clear/Cloudy	253	140	122	23	0	538
Raining	15	22	14	1	0	52
Snow/Sleet	6	5	3	0	0	14
Other	1	3	4	1	0	9
Unknown	0	2	0	0	0	2
Total	275	172	143	25	0	615
Persons Injured						
Clear/Cloudy	30,243	8,556	3,069	1,718	119	43,705
Raining	2,929	1,699	574	400	34	5,636
Snow/Sleet	1,094	282	182	86	6	1,650
Other	247	142	121	56	4	570
Unknown	93	25	14	0	36	168
Total	34,606	10,704	3,960	2,260	199	51,729

Table 47 - Persons Killed or Injured in Crashes by Speed Limit and Crash Type

Speed Limit	Crash Type						Total	
	Single Vehicle		Multiple Vehicle		Unknown			
	Number	Percent	Number	Percent	Number	Percent	Number	Percent
Persons Killed								
30 mph or less	45	13.7	36	12.9	2	33.3	83	13.5
35 or 40 mph	73	22.2	62	22.1	1	16.7	136	22.1
45 or 50 mph	43	13.1	83	29.6	1	16.7	127	20.7
55 mph	47	14.3	69	24.6	1	16.7	117	19.0
60 mph or higher	13	4.0	7	2.5	1	16.7	21	3.4
No Statutory Limit / Unknown	108	32.8	23	8.2	0	0	131	21.4
Total	329	100.0	280	100.0	6	100.0	615	100.0
Persons Injured								
30 mph or less	2,409	19.2	11,050	29.5	617	36.1	14,076	27.2
35 or 40 mph	2,847	22.7	12,708	33.9	451	26.4	16,006	30.9
45 or 50 mph	1,649	13.2	6,446	17.2	153	8.9	8,248	15.9
55 mph	1,595	12.7	4,670	12.5	122	7.1	6,387	12.3
60 mph or higher	754	6.0	1,239	3.3	25	1.5	2,018	3.9
No Statutory Limit / Unknown	3,276	26.1	1,375	3.6	343	20.0	4,994	9.7
Total	12,530	100.0	37,488	100.0	1,711	100.0	51,729	100.0

Table 48 - Persons Killed in Crashes by Speed Limit and Land Use - 2007

Speed Limit	Land Use						Total	
	Rural		Urban		Unknown			
	Number	Percent	Number	Percent	Number	Percent	Number	Percent
30 mph or less	11	13.3	49	59.0	23	27.7	83	100.0
35 or 40 mph	41	30.1	79	58.1	16	11.8	136	100.0
45 or 50 mph	78	61.4	43	33.9	6	4.7	127	100.0
55 mph	45	38.5	69	59.0	3	2.6	117	100.0
60 mph or higher	9	42.9	10	47.6	2	9.5	21	100.0
No Statutory Limit / Unknown	12	9.2	93	71.0	26	19.8	131	100.0
Total	196	31.9	343	55.8	76	12.4	615	100.0

Table 49 - Persons Killed or Injured in Crashes and Percent Alcohol-Related by Time of Day and Crash Type

Time of Day	Crash Type									Total		
	Single Vehicle			Multiple Vehicle			Unknown					
	Number	Alcohol-Related	% Alcohol Related	Number	Alcohol-Related	% Alcohol Related	Number	Alcohol-Related	% Alcohol Related	Number	Alcohol-Related	% Alcohol Related
Persons Killed												
Midnight to 3 am	59	30	50.8	28	12	42.9	1	0	0.0	88	42	47.7
3 am to 6 am	43	26	60.5	21	8	38.1	1	0	0.0	65	34	52.3
6 am to 9 am	22	3	13.6	23	1	4.3	0	0	0.0	45	4	8.9
9 am to Noon	18	3	16.7	19	1	5.3	1	0	0.0	38	4	10.5
Noon to 3 pm	27	4	14.8	45	2	4.4	0	0	0.0	72	6	8.3
3 pm to 6 pm	47	6	12.8	69	5	7.2	1	0	0.0	117	11	9.4
6 pm to 9 pm	52	16	30.8	43	11	25.6	1	1	100.0	96	28	29.2
9 pm to Midnight	61	26	42.6	32	12	37.5	1	0	0.0	94	38	40.4
Total	329	114	34.7	280	52	18.6	6	1	16.7	615	167	27.2
Persons Injured												
Midnight to 3 am	1,489	464	31.2	1,554	169	10.9	118	18	15.3	3,161	651	20.6
3 am to 6 am	895	187	20.9	942	66	7.0	39	3	7.7	1,876	256	13.6
6 am to 9 am	1,435	56	3.9	4,715	29	0.6	196	5	2.6	6,346	90	1.4
9 am to Noon	1,346	33	2.5	5,140	35	0.7	213	1	0.5	6,699	69	1.0
Noon to 3 pm	1,728	58	3.4	7,196	58	0.8	326	4	1.2	9,250	120	1.3
3 pm to 6 pm	2,219	127	5.7	9,156	103	1.1	354	2	0.6	11,729	232	2.0
6 pm to 9 pm	1,847	204	11.0	5,663	124	2.2	268	8	3.0	7,778	336	4.3
9 pm to Midnight	1,569	324	20.7	3,122	155	5.0	196	10	5.1	4,887	489	10.0
Unknown	2	0	0.0	0	0	0.0	1	1	100.0	3	1	33.3
Total	12,530	1,453	11.6	37,488	739	2.0	1,711	52	3.0	51,729	2,244	4.3

* Figures from MAARS (state crash reports)

Table 50 - Persons Killed in Construction/Maintenance Zones, by Roadway Function Class and Person Type

Roadway Function Class	Person Type			Total
	Driver	Motorcycle Riders	Pedestrian	
Interstate	2	1	2	5
US	0	0	3	3
Maryland	0	1	0	1
City	0	0	2	2
Total	2	2	7	11

Table 51 - Driver Involvement Rates per 100,000 Licensed Drivers by Age, Sex and Crash Severity

Age (Years)	Sex					Total	
	Male		Female		Unknown		
	Drivers	Involvement Rate	Drivers	Involvement Rate	Drivers	Drivers	Involvement Rate
Drivers in Fatal Crashes							
<16	2	N/A	1	N/A	0	3	N/A
16-20	69	59.3	31	27.9	0	100	44.0
21-24	80	60.5	25	19.8	1	106	41.0
25-34	144	41.0	30	8.6	1	175	25.0
35-44	130	32.6	45	10.9	0	175	21.6
45-54	101	25.0	29	6.9	0	130	15.7
55-64	59	20.2	17	5.5	1	77	12.8
65-74	31	20.2	16	10.0	0	47	15.0
75+	18	16.9	10	8.2	0	28	12.3
Unknown	5	N/A	1	N/A	40	46	N/A
Total	639	32.7	205	10.2	43	887	22.4
Drivers in Injury Crashes							
<16	75	N/A	33	N/A	0	108	N/A
16-20	4,296	3,692.6	3,506	3,152.8	14	7,816	3,435.0
21-24	3,807	2,879.5	2,951	2,336.1	11	6,769	2,618.2
25-34	7,291	2,074.5	5,676	1,630.4	23	12,990	1,856.8
35-44	6,856	1,720.8	5,345	1,294.2	31	12,232	1,507.5
45-54	5,945	1,472.2	4,483	1,061.3	13	10,441	1,263.7
55-64	3,465	1,185.2	2,549	823.9	14	6,028	1,001.8
65-74	1,608	1,048.6	1,164	728.3	2	2,774	885.8
75+	1,120	1,052.7	814	669.8	3	1,937	849.8
Unknown	662	N/A	246	N/A	3,014	3,922	N/A
Total	35,125	1797.3	26,767	1,330.5	3,125	65,017	1,639.3

Table 51 - Driver Involvement Rates per 100,000 Licensed Drivers by Age, Sex and Crash Severity (continued)

Age (Years)	Sex					Total	
	Male		Female		Unknown	Drivers	Involvement Rate
	Drivers	Involvement Rate	Drivers	Involvement Rate	Drivers		

Drivers in Property-Damage-Only Crashes

<16	114	N/A	59	N/A	1	174	N/A
16-20	7,253	6,234.3	5,044	4,535.9	30	12,327	5,417.5
21-24	6,620	5,007.2	4,298	3,402.4	51	10,969	4,242.8
25-34	12,407	3,530.1	7,879	2,263.1	107	20,393	2,914.9
35-44	11,105	2,787.4	7,062	1,709.9	99	18,266	2,251.2
45-54	9,295	2,301.7	5,708	1,351.3	99	15,102	1,827.8
55-64	5,311	1,816.6	3,259	1,053.4	66	8,636	1,435.2
65-74	2,263	1,475.8	1,337	836.6	20	3,620	1,156.0
75+	1,275	1,198.4	994	817.9	17	2,286	1,002.9
Unknown	2,812	N/A	1,014	N/A	24,445	28,271	N/A
Total	58,455	2,991.0	36,654	1,821.9	24,935	120,044	3,026.7

Drivers in All Crashes

<16	191	N/A	93	N/A	1	285	N/A
16-20	11,618	9,986.2	8,581	7,716.7	44	20,243	8,896.4
21-24	10,507	7,947.2	7,274	5,758.2	63	17,844	6,902.0
25-34	19,842	5,645.6	13,585	3,902.1	131	33,558	4,796.7
35-44	18,091	4,540.8	12,452	3,015.0	130	30,673	3,780.2
45-54	15,341	3,798.9	10,220	2,419.5	112	25,673	3,107.2
55-64	8,835	3,021.9	5,825	1,882.8	81	14,741	2,449.7
65-74	3,902	2,544.7	2,517	1,574.9	22	6,441	2,056.8
75+	2,413	2,268.0	1,818	1,495.9	20	4,251	1,865.0
Unknown	3,479	N/A	1,261	N/A	27,499	32,239	N/A
Total	94,219	4,821.0	63,626	3,162.6	28,103	185,948	4,688.4

Table 52 - Related Factors for Drivers and Motorcycle Operators Involved in Fatal Crashes

Factors	Number	Percent
Under influence of drugs	16	1.32
Under influence of alcohol	51	4.21
Under combined of medication	1	0.08
Under combined influence'	5	0.41
Physical/mental difficulty	6	0.50
Fell asleep, fainted, etc	17	1.40
Failed to give full time and attention	152	12.55
Did not comply with license restrictions	9	0.74
Failed to drive within a single lane	120	9.91
Failed to yield right of way	70	5.78
Failed to obey stop sign	9	0.74
Failed to obey traffic signal	18	1.49
Failed to obey other traffic control	10	0.83
Failed to keep right of center	82	6.77
Failed to stop for school bus	1	0.08
Wrong way on one way road	5	0.41
Exceeded speed limit	79	6.52
Operator using a cellular telephone	1	0.08
Stopping in lane/roadway	4	0.33
Too fast for conditions	96	7.93
Follow too closely	12	0.99
Improper turn	8	0.66
Improper lane change	18	1.49
Improper backing	0	0.00
Improper passing	9	0.74
Improper signal	0	0.00
Improper parking	0	0.00
Interference/Obstruction by passenger	0	0.00
Other factors	21	1.73
Not applicable	391	32.29
Unknown	0	0.00
Total Drivers	1,211	100.00

* The sum of the numbers and percentages is greater than total drivers and operators involved as more than one factor may be present for the same person.

Table 53 - Vehicle Occupants Killed or Injured, by Vehicle Type, Person Type, and Injury Severity

Vehicle and Person Type		Persons Killed	Persons Injured by Injury Severity				Total Killed or Injured
			Incapacitating	Nonincapacitating	Possible	Total Injured	
Passenger Car							
	Drivers	181	2,110	8,017	10,946	21,073	21,254
	Passengers	73	665	2,820	4,428	7,913	7,986
	<i>Subtotal</i>	254	2,775	10,837	15,374	28,986	29,240
Light Truck							
	Drivers	89	1,067	4,090	5,396	10,553	10,642
	Passengers	42	370	1,632	2,747	4,749	4,791
	<i>Subtotal</i>	131	1,437	5,722	8,143	15,302	15,433
Large Truck							
	Drivers	8	38	182	272	492	500
	Passengers	0	10	36	78	124	124
	<i>Subtotal</i>	8	48	218	350	616	624
Bus							
	Drivers	0	8	42	75	125	125
	Passengers	0	9	156	471	636	636
	<i>Subtotal</i>	0	17	198	546	761	761
Other/Unknown							
	Drivers	5	108	301	275	684	689
	Passengers	0	19	134	253	406	406
	<i>Subtotal</i>	5	127	435	528	1,090	1,095
Subtotal							
	Drivers	283	3,331	12,632	16,964	32,927	33,210
	Passengers	115	1,073	4,778	7,977	13,828	13,943
	<i>Subtotal</i>	398	4,404	17,410	24,941	46,755	47,153
Motorcycle							
	Drivers	91	386	786	350	1,522	1,613
	Passengers	6	33	74	28	135	141
	<i>Subtotal</i>	97	419	860	378	1,657	1,754
Total		495	4,823	18,270	25,319	48,412	48,907

Table 54 - Vehicle Occupants Killed or Injured, by Sex and Vehicle Type

Sex	Vehicle Type						Subtotal	Motorcycles	Total
	Passenger Car	Light Truck	Large Truck	Bus	Other/Unknown				
Occupants Killed									
Male	163	99	8	0	5	275	90	365	
Female	91	32	0	0	0	123	7	130	
Total	254	131	8	0	5	398	97	495	
Occupants Injured									
Male	12,337	7,907	551	338	772	21,905	1,399	23,304	
Female	16,578	7,357	64	419	300	24,718	255	24,973	
Unknown	71	38	1	4	18	132	3	135	
Total	28,986	15,302	616	761	1,090	46,755	1,657	48,412	

Table 55 - Vehicle Occupants Killed or Injured, by Age and Vehicle Type

Age (Year)	Vehicle Type						Subtotal	Motorcycle	Total
	Passenger Car	Light Truck	Large Truck	Bus	Other/Unknown				
Occupants Killed									
<5	0	2	0	0	0	2	0	2	
5-9	3	0	0	0	0	3	0	3	
10-15	6	7	0	0	0	13	0	13	
16-20	50	11	0	0	1	62	10	72	
21-24	44	12	0	0	3	59	9	68	
25-34	43	20	2	0	0	65	26	91	
35-44	30	20	0	0	0	50	27	77	
45-54	25	32	4	0	0	61	13	74	
55-64	20	11	2	0	0	33	9	42	
65-74	16	8	0	0	1	25	2	27	
75+	17	8	0	0	0	25	1	26	
Total	254	131	8	0	5	398	97	495	
Occupants Injured									
<5	558	406	0	16	6	986	1	987	
5-9	538	480	3	36	8	1,065	8	1,073	
10-15	832	621	2	74	67	1,596	25	1,621	
16-20	4,932	1,605	14	69	103	6,723	157	6,880	
21-24	3,715	1,114	57	35	135	5,056	206	5,262	
25-34	5,484	2,719	146	86	292	8,727	345	9,072	
35-44	4,009	3,156	158	134	227	7,684	366	8,050	
45-54	3,603	2,580	132	149	109	6,573	350	6,923	
55-64	2,314	1,341	70	68	34	3,827	151	3,978	
65-74	1,237	589	18	23	7	1,874	23	1,897	
75+	1,156	357	6	10	7	1,536	11	1,547	
Unknown	608	334	10	61	95	1,108	14	1,122	
Total	28,986	15,302	616	761	1,090	46,755	1,657	48,412	

Table 56 - Vehicle Occupants Killed or Injured, by Age, Person Type, and Sex

Age (Year)	Person Type											
	Drivers						Passengers					
	Male		Female		Total		Male		Female		Total	
	Number	Percent	Number	Percent	Number	Percent	Number	Percent	Number	Percent	Number	Percent
Occupants Killed												
<5	0	0.0	0	0.0	0	0.0	1	50.0	1	50.0	2	100.0
5-9	0	0.0	0	0.0	0	0.0	2	66.7	1	33.3	3	100.0
10-15	0	0.0	0	0.0	0	0.0	9	69.2	4	30.8	13	100.0
16-20	33	76.7	10	23.3	43	100.0	16	55.2	13	44.8	29	100.0
21-24	48	85.7	8	14.3	56	100.0	9	75.0	3	25.0	12	100.0
25-34	63	90.0	7	10.0	70	100.0	10	47.6	11	52.4	21	100.0
35-44	52	75.4	17	24.6	69	100.0	7	87.5	1	12.5	8	100.0
45-54	47	79.7	12	20.3	59	100.0	9	60.0	6	40.0	15	100.0
55-64	29	78.4	8	21.6	37	100.0	0	0.0	5	100.0	5	100.0
65-74	15	68.2	7	31.8	22	100.0	1	20.0	4	80.0	5	100.0
75+	11	61.1	7	38.9	18	100.0	3	37.5	5	62.5	8	100.0
Total	298	79.7	76	20.3	374	100.0	67	55.4	54	44.6	121	100.0
Occupants Injured												
<5	0	0.0	1	100.0	1	100.0	495	50.4	488	49.6	983	100.0
5-9	5	100.0	0	0.0	5	100.0	540	50.8	522	49.2	1,062	100.0
10-15	55	68.8	25	31.2	80	100.0	686	44.7	850	55.3	1,536	100.0
16-20	2,324	51.3	2,207	48.7	4,531	100.0	994	42.5	1,347	57.5	2,341	100.0
21-24	2,013	50.9	1,940	49.1	3,953	100.0	609	46.9	690	53.1	1,299	100.0
25-34	3,644	50.1	3,624	49.9	7,268	100.0	816	45.4	980	54.6	1,796	100.0
35-44	3,413	50.6	3,338	49.4	6,751	100.0	543	42.1	748	57.9	1,291	100.0
45-54	2,857	50.1	2,844	49.9	5,701	100.0	421	34.5	800	65.5	1,221	100.0
55-64	1,669	51.2	1,593	48.8	3,262	100.0	181	25.4	531	74.6	712	100.0
65-74	737	49.5	751	50.5	1,488	100.0	88	21.7	317	78.3	405	100.0
75+	546	50.8	528	49.2	1,074	100.0	122	26.3	341	73.7	463	100.0
Unknown	181	66.8	90	33.2	271	100.0	365	46.6	418	53.4	783	100.0
Total	17,444	50.7	16,941	49.3	34,385	100.0	5,860	73.0	8,032	27.0	13,892	100.0

Table 57 - Vehicle Occupants Killed or Injured, by Vehicle Type and First Harmful Event

Vehicle Type	First Harmful Event										Total	
	Collision With						Noncollision		Other/Unknown			
	Motor Vehicle in Transport		Object Not Fixed		Fixed Object							
Number	Percent	Number	Percent	Number	Percent	Number	Percent	Number	Percent	Number	Percent	
Occupants Killed												
Passenger Car	116	45.7	3	1.2	115	45.3	17	6.7	3	1.2	254	100.0
Light Truck	57	43.5	5	3.8	51	38.9	17	13	1	0.8	131	100.0
Large Truck	4	50	0	0.0	2	25	2	25	0	0.0	8	100.0
Other/Unknown	3	60	0	0.0	2	40	0	0.0	0	0.0	5	100.0
Motorcycle	49	50.5	4	4.1	32	33	11	11.3	1	1.0	97	100.0
Total	229	46.3	12	2.4	202	40.8	47	9.5	5	1.0	495	100.0
Occupants Injured												
Passenger Car	22,166	76.5	1,042	3.6	4,192	14.5	960	3.3	626	2.2	28,986	100.0
Light Truck	11,206	73.2	527	3.4	2,475	16.2	778	5.1	316	2.1	15,302	100.0
Large Truck	371	60.2	37	6	109	17.7	85	13.8	14	2.3	616	100.0
Bus	648	85.2	25	3.3	40	5.3	19	2.5	29	3.8	761	100.0
Other/Unknown	770	70.6	105	9.6	120	11	46	4.2	49	4.5	1,090	100.0
Motorcycle	740	44.7	148	8.9	293	17.7	379	22.9	97	5.9	1,657	100.0
Total	35,901	74.2	1,884	3.9	7,229	14.9	2,267	4.7	1,131	2.3	48,412	100.0

Table 58 - Vehicle Occupants Killed or Injured, by Initial Point of Impact and Vehicle Type

Initial Point of Impact	Vehicle Type							Total
	Passenger Car	Light Truck	Large Truck	Bus	Other/Unknown	Subtotal	Motorcycle	
Occupants Killed								
Front	127	65	5	0	3	200	47	247
Left	54	14	1	0	0	69	12	81
Right	43	23	0	0	0	66	11	77
Rear	9	3	0	0	1	13	2	15
Other	18	23	2	0	0	43	23	66
Unknown	3	3	0	0	1	7	2	9
Total	254	131	8	0	5	398	97	495
Occupants Injured								
Front	14,988	7,846	275	355	451	23,915	695	24,610
Left	3,418	1,521	83	129	144	5,295	264	5,559
Right	2,949	1,454	69	63	96	4,631	241	4,872
Rear	6,022	3,493	95	172	137	9,919	59	9,978
Other	845	630	47	14	51	1,587	255	1,842
Unknown	764	358	47	28	211	1,408	143	1,551
Total	28,986	15,302	616	761	1,090	46,755	1,657	48,412

Table 59 - Vehicle Occupants Killed or Injured, by Vehicle Type and Ejection

Vehicle Type	Ejected		Not Ejected		Other/Unknown		Total	
	Number	Percent	Number	Percent	Number	Percent	Number	Percent
Occupants Killed								
Passenger Car	45	17.7	208	81.9	1	0.4	254	100.0
Light Truck	33	25.2	98	74.8	0	0	131	100.0
Large Truck	3	37.5	5	62.5	0	0	8	100.0
Other/Unknown	3	60.0	2	40.0	0	0	5	100.0
Motorcycle	89	91.8	8	8.2	0	0	97	100.0
Total	173	34.9	321	64.8	1	0.2	495	100.0
Occupants Injured								
Passenger Car	172	0.6	28,371	97.9	443	1.5	28,986	100.0
Light Truck	180	1.2	14,950	97.7	172	1.1	15,302	100.0
Large Truck	13	2.1	592	96.1	11	1.8	616	100.0
Bus	3	0.4	749	98.4	9	1.2	761	100.0
Other/Unknown	115	10.6	947	86.9	28	2.6	1,090	100.0
Motorcycle	979	59.1	619	37.4	59	3.6	1,657	100.0
Total	1,462	3.0	46,228	95.5	722	1.5	48,412	100.0

Table 60 - Occupants Killed or Injured in Two-Vehicle Crashes, by Vehicle Types Involved

Vehicle Type	Occupants Killed	Vehicle Type	Occupants Killed	Total Occupants Killed
Passenger Car	-	Passenger Car	-	30
Passenger Car	49	Light Truck	12	61
Passenger Car	25	Large Truck	1	26
Passenger Car	1	Bus	0	1
Passenger Car	0	Motorcycle	20	20
Passenger Car	3	Other/Unknown	1	4
Light Truck	-	Light Truck	-	19
Light Truck	13	Large Truck	1	14
Light Truck	1	Bus	0	1
Light Truck	1	Motorcycle	14	15
Light Truck	5	Other/Unknown	1	6
Large Truck	-	Large Truck	-	1
Large Truck	0	Bus	0	0
Large Truck	0	Motorcycle	6	6
Large Truck	0	Other/Unknown	1	1
Motorcycle	-	Motorcycle	-	1
Motorcycle	0	Bus	0	0
Motorcycle	2	Other/Unknown	0	2
Other/Unknown	-	Other/Unknown	-	0
Total Occupants Killed				208
Vehicle Type	Occupants Injured	Vehicle Type	Occupants Injured	Total Occupants Injured
Passenger Car	-	Passenger Car	-	10,132
Passenger Car	6,989	Light Truck	4,895	11,884
Passenger Car	902	Large Truck	148	1,050
Passenger Car	159	Bus	262	421
Passenger Car	55	Motorcycle	399	454
Passenger Car	433	Other Unknown	352	785
Light Truck	-	Light Truck	-	3,604
Light Truck	452	Large Truck	127	579
Light Truck	121	Bus	284	405
Light Truck	41	Motorcycle	270	311
Light Truck	174	Other Unknown	191	365
Large Truck	-	Large Truck	-	59
Large Truck	4	Bus	19	23
Large Truck	0	Motorcycle	22	22

Table 60 - Occupants Killed or Injured in Two-Vehicle Crashes, by Vehicle Types Involved (continued)

Vehicle Type	Occupants Injured	Vehicle Type	Occupants Injured	Total Occupants Injured
Large Truck	2	Other Unknown	22	24
Motorcycle	-	Bus	-	44
Motorcycle	0	Motorcycle	10	10
Motorcycle	22	Other Unknown	36	58
Bus	-	Motorcycle	-	32
Bus	27	Other Unknown	1	28
Other/Unknown	-	Other Unknown	-	179
Total Occupants Injured				30,469

Table 61 - Occupants Involved in Fatal Crashes and Occupant Fatalities by Vehicle Body Types

Body Type		Occupants Involved		Occupants Killed	
		No.	%	No.	%
Passenger Cars	Automobile	610	46.7	250	50.5
	Station Wagon	9	0.7	4	0.8
	Subtotal	619	47.4	254	51.3
Light Trucks	Pickup Truck	145	11.1	53	10.7
	Recreational Vehicle	222	17	56	11.3
	Van	85	6.5	22	4.4
	Subtotal	452	34.6	131	26.5
Large Trucks	Single Truck 2 Axles	39	3	2	0.4
	Single Truck 3 Axles	9	0.7		
	Truck Tractor	38	2.9	6	1.2
	Subtotal	86	6.6	8	1.6
Motorcycles		106	8.1	97	19.6
Buses	School Bus	4	0.3	0	0.0
	Transit Bus	11	0.8	0	0.0
	Subtotal	15	1.1	0	0.0
Other Vehicles	Other	15	1.2	5	1.0
	Police Vehicle / Emergency	2	0.2	0	0.0
	Police Vehicle/Non-Emergency	4	0.3	0	0.0
	Subtotal	21	1.6	5	1.0
Unknown Body Type		6	0.5	0	0.0
Total		1,305	100	495	100.0

Table 62 - Persons Injured in Alcohol Crashes, by Person Type and Injury Severity

Person Type		Person Injured by Injury Severity			Total Injured
		Incapacitating	Nonincapacitating	Possible	
Vehicle Occupants	Driver	468	1,208	1,131	2,807
	Passenger	172	470	526	1,168
	Unknown Occupant	0	0	14	14
	Subtotal	640	1,678	1,671	3,989
Motorcycle Rider		66	48	67	25
Nonmotorists	Pedestrian	75	121	63	259
	Pedalcyclist	4	22	11	37
	Other/Unknown	0	7	2	9
	Subtotal	79	150	76	305
Total		767	1,895	1,772	4,434

Table 63 - Drivers and Motorcycle Operators Involved in Crashes, by Age, Alcohol Involvement, and Crash Severity

Age (Year)	Alcohol Involvement				Total	
	Yes		No			
	Number	Percent	Number	Percent	Number	Percent
Drivers in Fatal Crashes						
<16	0	0.0	3	100.0	3	100.0
16-20	17	17.0	83	83.0	100	100.0
21-24	46	43.4	60	56.6	106	100.0
25-34	52	29.7	123	70.3	175	100.0
35-44	27	15.4	148	84.6	175	100.0
45-54	23	17.7	107	82.3	130	100.0
55-64	5	6.5	72	93.5	77	100.0
65-74	7	14.9	40	85.1	47	100.0
75+	0	0.0	28	100.0	28	100.0
Unknown	0	0.0	46	100.0	46	100.0
Total	177	20.0	710	80.0	887	100.0
Drivers in Injury Crashes						
<16	6	5.6	102	94.4	108	100.0
16-20	316	4.0	7,500	96.0	7,816	100.0
21-24	520	7.7	6,249	92.3	6,769	100.0
25-34	713	5.5	12,277	94.5	12,990	100.0
35-44	566	4.6	11,666	95.4	12,232	100.0
45-54	414	4.0	10,027	96.0	10,441	100.0
55-64	157	2.6	5,871	97.4	6,028	100.0
65-74	45	1.6	2,729	98.4	2,774	100.0
75+	14	0.7	1,923	99.3	1,937	100.0
Unknown	44	1.1	3,878	98.9	3,922	100.0
Total	2,795	4.3	62,222	95.7	65,017	100.0

Table 63 - Drivers and Motorcycle Operators Involved in Crashes, by Age, Alcohol Involvement, and Crash Severity (continued)

Drivers in Property-Damage-Only Crashes						
<16	5	2.9	169	97.1	174	100.0
16-20	497	4.0	11,830	96.0	12,327	100.0
21-24	812	7.4	10,157	92.6	10,969	100.0
25-34	1,241	6.1	19,152	93.9	20,393	100.0
35-44	847	4.6	17,419	95.4	18,266	100.0
45-54	635	4.2	14,467	95.8	15,102	100.0
55-64	273	3.2	8,363	96.8	8,636	100.0
65-74	63	1.7	3,557	98.3	3,620	100.0
75+	20	0.9	2,266	99.1	2,286	100.0
Unknown	254	0.9	28,017	99.1	28,271	100.0
Total	4,647	3.9	115,397	96.1	120,044	100.0

*Not all drivers in injury or PDO crashes are tested for alcohol

Table 64 - Drivers and Motorcycle Operators Injured, by Time of Day, Day of Week, Age, Alcohol Involvement, and Crash Type

Time of Day and Day of Week		Under 21			21 and Older		
		Number Injured	With Alcohol Involvement		Number Injured	With Alcohol Involvement	
			No	%		No	%
Single-Vehicle Crashes							
Daytime	Weekday	614	16	2.6	1,968	100	5.1
	Weekend	266	20	7.5	853	83	9.7
Nighttime	Weekday	440	91	20.7	1,139	319	28.0
	Weekend	567	155	27.3	1,279	441	34.5
Total		1,887	282	14.9	5,239	943	18.0
Multiple-Vehicle Crashes							
Daytime	Weekday	1,976	16	0.8	12,994	132	1.0
	Weekend	521	6	1.2	3,287	69	2.1
Nighttime	Weekday	665	34	5.1	3,193	168	5.3
	Weekend	708	52	7.3	2,890	257	8.9
Total		3,870	108	2.8	22,364	626	2.8

*Not all drivers in injury or PDO crashes are tested for alcohol

Table 65 - Drivers and Motorcycle Operators Involved in Crashes, by Vehicle Type, Alcohol Involvement, and Crash Severity

Vehicle Type	Alcohol Involvement				Total	
	Yes		No		Number	Percent
	Number	Percent	Number	Percent		
Drivers in Fatal Crashes						
Passenger Car	92	22.8	312	77.2	404	100.0
Light Truck	57	19.9	229	80.1	286	100.0
Large Truck	1	1.4	70	98.6	71	100.0
Bus	0	0.0	6	100.0	6	100.0
Other/Unknown	3	13.6	19	86.4	22	100.0
<i>Subtotal</i>	<i>153</i>	<i>19.4</i>	<i>636</i>	<i>80.6</i>	<i>789</i>	<i>100.0</i>
Motorcycle	24	24.5	74	75.5	98	100.0
Total	177	20.0	710	80.0	887	100.0
Drivers in Injury Crashes						
Passenger Car	1,556	4.2	35,541	95.8	37,097	100.0
Light Truck	1,089	4.9	21,231	95.1	22,320	100.0
Large Truck	17	0.8	2,026	99.2	2,043	100.0
Bus	3	0.5	556	99.5	559	100.0
Other/Unknown	23	1.6	1,382	98.4	1,405	100.0
<i>Subtotal</i>	<i>2,688</i>	<i>4.2</i>	<i>60,736</i>	<i>95.8</i>	<i>63,424</i>	<i>100.0</i>
Motorcycle	107	6.7	1,486	93.3	1,593	100.0
Total	2,795	4.3	62,222	95.7	65,017	100.0

**Not all drivers in injury or PDO crashes are tested for alcohol*

**Table 65 - Drivers and Motorcycle Operators Involved in Crashes, by Vehicle Type, Alcohol Involvement, and Crash Severity
(continued)**

Vehicle Type	Alcohol Involvement				Total	
	Yes		No		Number	Percent
	Number	Percent	Number	Percent		
Drivers in Property-Damage-Only Crashes						
Passenger Car	2,786	4.3	62,710	95.7	65,496	100.0
Light Truck	1,754	4.6	36,572	95.4	38,326	100.0
Large Truck	47	1.0	4,862	99.0	4,909	100.0
Bus	6	0.2	2,623	99.8	2,629	100.0
Other/Unknown	37	0.4	8,272	99.6	8,309	100.0
<i>Subtotal</i>	<i>4,630</i>	<i>3.9</i>	<i>115,39</i>	<i>96.1</i>	<i>119,669</i>	<i>100.0</i>
Motorcycle	17	4.5	358	95.5	375	100.0
Total	4,647	3.9	115,397	96.1	120,044	100.0

**Not all drivers in injury or PDO crashes are tested for alcohol*

Table 66 - Drivers Involved in Crashes, by Vehicle Type, Restraint Use, and Crash Severity

Vehicle Type	Restraint Use						Total	
	Used		Not Used		Other/Unknown			
	Number	Percent	Number	Percent	Number	Percent	Number	Percent
Drivers in Fatal Crashes								
Passenger Car	280	69.3	77	19.1	47	11.6	404	100.0
Light Truck	196	68.5	60	21.0	30	10.5	286	100.0
Large Truck	52	73.2	8	11.3	11	15.5	71	100.0
Bus	6	100.0	0	0.0	0	0.0	6	100.0
Other/Unknown	8	36.4	6	27.3	8	36.4	22	100.0
Total	542	68.7	151	19.1	96	12.2	789	100.0
Drivers in Injury Crashes								
Passenger Car	31,414	84.7	1,072	2.9	4,611	12.4	37,097	100.0
Light Truck	18,975	85.0	636	2.8	2,709	12.1	22,320	100.0
Large Truck	1,732	84.8	49	2.4	262	12.8	2,043	100.0
Bus	503	90.0	4	0.7	52	9.3	559	100.0
Other/Unknown	709	50.5	155	11.0	541	38.5	1,405	100.0
Total	53,333	84.1	1,916	3.0	8,175	12.9	63,424	100.0
Drivers in Property-Damage-Only Crashes								
Passenger Car	44,986	68.7	1,145	1.7	19,365	29.6	65,496	100.0
Light Truck	27,067	70.6	655	1.7	10,604	27.7	38,326	100.0
Large Truck	3,565	72.6	79	1.6	1,265	25.8	4,909	100.0
Bus	2,240	85.2	54	2.1	335	12.7	2,629	100.0
Other/Unknown	2,350	28.3	132	1.6	5,827	70.1	8,309	100.0
Total	80,208	67.0	2,065	1.7	37,396	31.2	119,669	100.0

**Table 66 - Drivers Involved in Crashes, by Vehicle Type, Restraint Use, and Crash Severity
(continued)**

Vehicle Type	Restraint Use						Total	
	Used		Not Used		Other/Unknown		Number	Percent
	Number	Percent	Number	Percent	Number	Percent		
Drivers in All Crashes								
Passenger Car	76,680	74.4	2,294	2.2	24,023	23.3	102,997	100.0
Light Truck	46,238	75.9	1,351	2.2	13,343	21.9	60,932	100.0
Large Truck	5,349	76.2	136	1.9	1,538	21.9	7,023	100.0
Bus	2,749	86.1	58	1.8	387	12.1	3,194	100.0
Other/Unknown	3,067	31.5	293	3.0	6,376	65.5	9,736	100.0
Total	134,083	72.9	4,132	2.2	45,667	24.8	183,882	100.0

Table 67 - Passenger Car and Light Truck Occupants Killed or Injured by Age and Restraint Use

Age (Years)	Restraint Use						Total	
	Used		Not Used		Other/Unknown			
	Number	Percent	Number	Percent	Number	Percent	Number	Percent
Occupants Killed								
<5	0	0.0	0	0.0	2	100.0	2	100.0
5-9	1	33.3	1	33.3	1	33.3	3	100.0
10-15	7	53.8	6	46.2	0	0.0	13	100.0
16-20	27	44.3	28	45.9	6	9.8	61	100.0
21-24	22	39.3	25	44.6	9	16.1	56	100.0
25-34	23	36.5	34	54.0	6	9.5	63	100.0
35-44	22	44.0	25	50.0	3	6.0	50	100.0
45-54	33	57.9	22	38.6	2	3.5	57	100.0
55-64	25	80.6	6	19.4	0	0.0	31	100.0
65-74	15	62.5	8	33.3	1	4.2	24	100.0
75+	18	72.0	7	28.0	0	0.0	25	100.0
Total	193	50.1	162	42.1	30	7.8	385	100.0
Occupants Injured								
<5	166	17.2	40	4.1	758	78.6	964	100.0
5-9	683	67.1	68	6.7	267	26.2	1,018	100.0
10-15	1,231	84.7	127	8.7	95	6.5	1,453	100.0
16-20	5,593	85.6	526	8.0	418	6.4	6,537	100.0
21-24	4,083	84.6	354	7.3	392	8.1	4,829	100.0
25-34	7,095	86.5	452	5.5	656	8.0	8,203	100.0
35-44	6,267	87.5	326	4.5	572	8.0	7,165	100.0
45-54	5,537	89.6	205	3.3	441	7.1	6,183	100.0
55-64	3,315	90.7	99	2.7	241	6.6	3,655	100.0
65-74	1,644	90.0	66	3.6	116	6.4	1,826	100.0
75+	1,347	89.0	63	4.2	103	6.8	1,513	100.0
Unknown	537	57.0	68	7.2	337	35.8	942	100.0
Total	37,498	84.7	2,394	5.4	4,396	9.9	44,288	100.0

Table 68 - Passenger Car and Light Truck Occupants Survivors of Fatal Crashes, by Age and Restraint Use

Age (Years)	Restraint Use						Total	
	Used		Not Used		Other/Unknown		Number	Percent
	Number	Percent	Number	Percent	Number	Percent		
<5	1	8.3	1	8.3	10	83.3	12	100.0
5-9	17	51.5	7	21.2	9	27.3	33	100.0
10-15	31	86.1	5	13.9	0	0.0	36	100.0
16-20	79	73.1	20	18.5	9	8.3	108	100.0
21-24	51	63.0	16	19.8	14	17.3	81	100.0
25-34	92	74.2	20	16.1	12	9.7	124	100.0
35-44	85	84.2	10	9.9	6	5.9	101	100.0
45-54	60	92.3	2	3.1	3	4.6	65	100.0
55-64	40	87.0	2	4.3	4	8.7	46	100.0
65-74	24	96.0	0	0.0	1	4.0	25	100.0
75+	13	86.7	1	6.7	1	6.7	15	100.0
Unknown	7	17.5	0	0.0	33	82.5	40	100.0
Total	500	72.9	84	12.2	102	14.9	686	100.0

Table 69 - Passenger Car Occupants Killed or Injured, by Seating Position and Restraint Use

Seating Position		Restraint Use						Total	
		Used		Not Used		Other/Unknown			
		Number	Percent	Number	Percent	Number	Percent	Number	Percent
Passenger Car Occupants Killed									
Front Seat	Left	102	56.4	67	37.0	12	6.6	181	100.0
	Right	31	63.3	12	24.5	6	12.2	49	100.0
	Subtotal	133	57.8	79	34.3	18	7.8	230	100.0
Second Seat	Left	2	18.2	9	81.8	0	0.0	11	100.0
	Right	1	8.3	10	83.3	1	8.3	12	100.0
	Subtotal	3	13.0	19	82.6	1	4.3	23	100.0
Unknown		0	0.0	0	0.0	1	100.0	1	100.0
Total		136	53.5	98	38.6	20	7.9	254	100.0
Passenger Car Occupants Injured									
Front Seat	Left	18,620	88.3	801	3.8	1,661	7.9	21,082	100.0
	Middle	63	81.8	5	6.5	9	11.7	77	100.0
	Right	4,195	87.7	286	6.0	300	6.3	4,781	100.0
	Subtotal	22,878	88.2	1,092	4.2	1,970	7.6	25,940	100.0
Second Seat	Left	651	64.5	118	11.7	241	23.9	1,010	100.0
	Middle	145	45.6	48	15.1	125	39.3	318	100.0
	Right	867	59.2	177	12.1	420	28.7	1,464	100.0
	Subtotal	1,663	59.6	343	12.3	786	28.2	2,792	100.0
Other		49	42.6	23	20.0	43	37.4	115	100.0
Unknown		88	63.3	19	13.7	32	23.0	139	100.0
Total		24,678	85.1	1,477	5.1	2,831	9.8	28,986	100.0

Table 70 - Light Truck Occupants Killed or Injured, by Seating Position and Restraint Use

Seating Position		Restraint Use						Total	
		Used		Not Used		Other/Unknown			
		Number	Percent	Number	Percent	Number	Percent	Number	Percent
Light Truck Occupants Killed									
Front Seat	Left	42	47.2	41	46.1	6	6.7	89	100.0
	Right	9	36.0	14	56.0	2	8.0	25	100.0
	Subtotal	51	44.7	55	48.2	8	7.0	114	100.0
Second Seat	Left	3	42.9	3	42.9	1	14.3	7	100.0
	Right	2	25.0	5	62.5	1	12.5	8	100.0
	Subtotal	5	33.3	8	53.3	2	13.3	15	100.0
Other		1	50.0	1	50.0	0	0.0	2	100.0
Total		57	43.5	64	48.9	10	7.6	131	100.0
Light Truck Occupants Injured									
Front Seat	Left	9,279	87.9	502	4.8	781	7.4	10,562	100.0
	Middle	47	70.1	13	19.4	7	10.4	67	100.0
	Right	2,245	88.3	157	6.2	140	5.5	2,542	100.0
	Subtotal	11,571	87.9	672	5.1	928	7.0	13,171	100.0
Second Seat	Left	383	63.3	46	7.6	176	29.1	605	100.0
	Middle	140	49.0	27	9.4	119	41.6	286	100.0
	Right	506	64.1	55	7.0	229	29.0	790	100.0
	Subtotal	1,029	61.2	128	7.6	524	31.2	1,681	100.0
Other		182	47.6	104	27.2	96	25.1	382	100.0
Unknown		38	55.9	13	19.1	17	25.0	68	100.0
Total		12,820	83.8	917	6.0	1,565	10.2	15,302	100.0

Table 71 - Passenger Car and Light Truck Occupants Killed or Injured, by Restraint Use and Type of Restraint

Restraint Use and Type of Restraint		Vehicle Type			
		Passenger Car		Light Truck	
		Number	Percent	Number	Percent
Occupants Killed					
Restraint Used	Lap/Shoulder Belt	68	26.8	32	24.4
	Lap Belt Only	1	0.4	0	0.0
	Shoulder Belt Only	3	1.2	0	0.0
	Child/Youth Restraint	1	0.4	2	1.5
	Type Unknown	1	0.4	0	0.0
	Restraint Used, Airbag Deployed	59	23.2	24	18.3
	Safety Belt Used Improperly	5	2.0	1	0.8
	<i>Subtotal</i>	<i>138</i>	<i>54.3</i>	<i>59</i>	<i>45.0</i>
No Restraint Used		58	22.8	42	32.1
No Restraint Used Airbag Deployed		40	15.7	22	16.8
Other/Unknown		18	7.1	8	6.1
Total		254	100.0	131	100.0
Occupants Injured					
Restraint Used	Lap/Shoulder Belt	18,283	63.1	9,725	63.6
	Lap Belt Only	235	0.8	154	1.0
	Shoulder Belt Only	327	1.1	167	1.1
	Child/Youth Restraint	607	2.1	484	3.2
	Type Unknown	2	0.0	16	0.1
	Restraint Used, Airbag Deployed	5,764	19.9	2,731	17.8
	Safety Belt Used Improperly	69	0.2	43	0.3
	Child Safety Seat Used Improperly	5	0.0	2	0.0
	<i>Subtotal</i>	<i>25,292</i>	<i>87.3</i>	<i>13,322</i>	<i>87.1</i>
No Restraint Used		1,187	4.1	800	5.2
No Restraint Used, Airbag Deployed		290	1.0	117	0.8
Other/Unknown		2,217	7.6	1,063	6.9
Total		28,986	100.0	15,302	100.0

Table 72 - Motorcycle Riders Killed or Injured, by Time of Day and Day of Week

Time of Day	Day of Week				Total	
	Weekday		Weekend			
	Number	Percent	Number	Percent	Number	Percent
Motorcycle Riders Killed						
Midnight to 3 am	3	6.8	5	9.4	8	8.2
3 am to 6 am	2	4.5	2	3.8	4	4.1
6 am to 9 am	2	4.5	0	0.0	2	2.1
9 am to Noon	2	4.5	4	7.5	6	6.2
Noon to 3 pm	7	15.9	7	13.2	14	14.4
3 pm to 6 pm	16	36.4	6	11.3	22	22.7
6 pm to 9 pm	8	18.2	19	35.8	27	27.8
9 pm to Midnight	4	9.1	10	18.9	14	14.4
Total	44	100.0	53	100.0	97	100.0
Motorcycle Riders Injured						
Midnight to 3 am	34	4.2	66	7.8	100	6.0
3 am to 6 am	14	1.7	17	2.0	31	1.9
6 am to 9 am	74	9.1	15	1.8	89	5.4
9 am to Noon	74	9.1	73	8.7	147	8.9
Noon to 3 pm	140	17.2	167	19.8	307	18.5
3 pm to 6 pm	248	30.4	206	24.5	454	27.4
6 pm to 9 pm	162	19.9	205	24.3	367	22.1
9 pm to Midnight	69	8.5	92	10.9	161	9.7
Unknown	0	0.0	1	0.1	1	0.1
Total	815	100.0	842	100.0	1,657	100.0

Table 73 - Motorcycle Riders Killed, by Person Type and Helmet Use

Person Type	Helmet Used						Total	
	Used		Not Used		Other/Unknown			
	Number	Percent	Number	Percent	Number	Percent	Number	Percent
Operators	78	85.7	7	7.7	6	6.6	91	100.0
Passengers	4	66.7	2	33.3	0	0.0	6	100.0
Total	82	84.5	9	9.3	6	6.2	97	100.0

Table 74 - Persons Killed or Injured in School Bus Related Crashes, by Person Type

Person Type	Killed		Injured	
	Number	Percent	Number	Percent
School Bus Driver	0	0.0	51	12.8
School Bus Passenger	0	0.0	126	31.5
Pedestrian	0	0.0	13	3.3
Pedalcyclist	0	0.0	2	0.5
Occupant of Other Vehicle	2	100.0	208	52.0
Other Nonoccupants	0	0.0	0	0.0
Total	2	100.0	400	100.0

Table 75 - Pedestrians Killed or Injured, by Age and Location

Age (Years)	Location				Total	
	Intersection		Nonintersection			
	Number	Percent	Number	Percent	Number	Percent
Pedestrians Killed						
<5	0	0.0	1	100.0	1	100.0
5-9	0	0.0	1	100.0	1	100.0
10-15	0	0.0	4	100.0	4	100.0
16-20	1	12.5	7	87.5	8	100.0
21-24	1	8.3	11	91.7	12	100.0
25-34	1	5.9	16	94.1	17	100.0
35-44	2	8.7	21	91.3	23	100.0
45-54	1	6.3	15	93.8	16	100.0
55-64	2	13.3	13	86.7	15	100.0
65-74	0	0.0	3	100.0	3	100.0
75+	2	25.0	6	75.0	8	100.0
Unknown	0	0.0	2	100.0	2	100.0
Total	10	9.1	100	90.9	110	100.0
Pedestrians Injured						
<5	6	9.1	60	90.9	66	100.0
5-9	19	11.4	147	88.6	166	100.0
10-15	66	21.3	244	78.7	310	100.0
16-20	66	22.1	233	77.9	299	100.0
21-24	42	20.3	165	79.7	207	100.0
25-34	56	16.9	276	83.1	332	100.0
35-44	67	19.1	283	80.9	350	100.0
45-54	61	17.6	286	82.4	347	100.0
55-64	34	19.8	138	80.2	172	100.0
65-74	25	25.0	75	75.0	100	100.0
75+	11	12.5	77	87.5	88	100.0
Unknown	25	28.1	64	71.9	89	100.0
Total	478	18.9	2,048	81.1	2,526	100.0

Table 76 - Pedestrians Killed or Injured and Fatality and Injury Rates per 100,000 Population, by Age and Sex

Age(Years)	Male			Female			Total		
	Killed	Population (Thousands)	Rate	Killed	Population (Thousands)	Rate	Killed	Population (Thousands)	Rate
<5	0	192,592	0.00	1	184,153	0.54	1	376,745	0.27
5-9	1	183,090	0.55	0	175,750	0.00	1	358,840	0.28
10-15	3	233,033	1.29	1	223,772	0.45	4	456,805	0.88
16-20	5	204,456	2.45	3	198,038	1.51	8	402,494	1.99
21-24	12	153,486	7.82	0	150,316	0.00	12	303,802	3.95
25-34	16	355,964	4.49	1	365,492	0.27	17	721,456	2.36
35-44	14	410,405	3.41	9	437,628	2.06	23	848,033	2.71
45-54	12	415,112	2.89	4	449,727	0.89	16	864,839	1.85
55-64	8	295,457	2.71	7	328,064	2.13	15	623,521	2.41
65-74	2	158,794	1.26	1	191,440	0.52	3	350,234	0.86
75+	4	116,201	3.44	4	195,374	2.05	8	311,575	2.57
Unknown	1	N/A		1	N/A		2	N/A	
Total	78	2,718,590	2.87	32	2,899,754	1.10	110	5,618,344	1.96
Age(Years)	Male			Female			Total		
	Injured	Population (Thousands)	Rate	Injured	Population (Thousands)	Rate	Injured	Population (Thousands)	Rate
<5	44	192,592	22.85	22	184,153	11.95	66	376,745	17.52
5-9	100	183,090	54.62	66	175,750	37.55	166	358,840	46.26
10-15	166	233,033	71.23	142	223,772	63.46	308	456,805	67.42
16-20	157	204,456	76.79	142	198,038	71.70	299	402,494	74.29
21-24	116	153,486	75.58	91	150,316	60.54	207	303,802	68.14
25-34	197	355,964	55.34	135	365,492	36.94	332	721,456	46.02
35-44	204	410,405	49.71	146	437,628	33.36	350	848,033	41.27
45-54	200	415,112	48.18	147	449,727	32.69	347	864,839	40.12
55-64	90	295,457	30.46	82	328,064	25.00	172	623,521	27.59
65-74	58	158,794	36.53	42	191,440	21.94	100	350,234	28.55
75+	35	116,201	30.12	53	195,374	27.13	88	311,575	28.24
Unknown	45	N/A		42	N/A		87	N/A	
Total	1,412	2,718,590	51.94	1,110	2,899,754	38.28	2,522	5,618,344	44.89

Table 77 - Pedestrians Killed or Injured by Time of Day and Day of Week

Time of Day	Day of Week				Total	
	Weekday		Weekend			
	Number	Percent	Number	Percent	Number	Percent
Pedestrians Killed						
Midnight to 3 am	7	11.7	8	16.0	15	13.6
3 am to 6 am	1	1.7	10	20.0	11	10.0
6 am to 9 am	6	10.0	2	4.0	8	7.3
9 am to Noon	7	11.7	0	0.0	7	6.4
Noon to 3 pm	5	8.3	1	2.0	6	5.5
3 pm to 6 pm	10	16.7	4	8.0	14	12.7
6 pm to 9 pm	13	21.7	14	28.0	27	24.5
9 pm to Midnight	11	18.3	11	22.0	22	20.0
Total	60	100.0	50	100.0	110	100.0
Pedestrians Injured						
Midnight to 3 am	40	2.3	91	11.6	131	5.2
3 am to 6 am	23	1.3	17	2.2	40	1.6
6 am to 9 am	294	16.9	25	3.2	319	12.6
9 am to Noon	218	12.5	59	7.5	277	11.0
Noon to 3 pm	288	16.6	105	13.4	393	15.6
3 pm to 6 pm	471	27.1	128	16.3	599	23.7
6 pm to 9 pm	279	16.0	215	27.4	494	19.6
9 pm to Midnight	127	7.3	146	18.6	273	10.8
Total	1,740	100.0	786	100.0	2,526	100.0

Table 78 - Pedestrians Killed or Injured in Single-Vehicle Crashes, by Vehicle Type and Initial Point of Impact

Vehicle Type	Initial Point of Impact												Total	
	Front		Left		Right		Rear		Other		Unknown			
	No.	%	No.	%	No.	%	No.	%	No.	%	No.	%	No.	%
Pedestrians Killed														
Passenger Car	49	90.7	0	0.0	2	3.7	0	0.0	1	1.9	2	3.7	54	100.0
Light Truck	21	95.5	0	0.0	0	0.0	0	0.0	1	4.5	0	0.0	22	100.0
Large Truck	8	88.9	0	0.0	0	0.0	0	0.0	0	0.0	1	11.1	9	100.0
Bus	2	66.7	0	0.0	0	0.0	0	0.0	1	33.3	0	0.0	3	100.0
Other/Unknown	2	40.0	0	0.0	0	0.0	0	0.0	1	20.0	2	40.0	5	100.0
Motorcycle	0	0.0	0	0.0	0	0.0	0	0.0	1	100	0	0.0	1	100.0
Total	82	87.2	0	0.0	2	2.1	0	0.0	5	5.3	5	5.3	94	100.0
Pedestrians Injured														
Passenger Car	694	53.7	97	7.5	141	10.9	62	4.8	49	3.8	249	19.3	1,292	100.0
Light Truck	377	49.2	79	10.3	98	12.8	64	8.3	25	3.3	124	16.2	767	100.0
Large Truck	11	33.3	3	9.1	3	9.1	6	18.2	0	0.0	10	30.3	33	100.0
Bus	23	44.2	4	7.7	13	25.0	2	3.8	0	0.0	10	19.2	52	100.0
Other/Unknown	18	20.0	7	7.8	4	4.4	1	1.1	1	1.1	59	65.6	90	100.0
Motorcycle	2	25.0	0	0.0	0	0.0	0	0.0	1	12.5	5	62.5	8	100.0
Total	1,125	50.2	190	8.5	259	11.6	135	6.0	76	3.4	457	20.4	2,242	100.0

Table 79 - Pedestrians Killed, by Related Factors

Factors	Number	Percent
Under influence of drugs	1	0.7
Under influence of alcohol	4	2.7
Under influence of medication	0	0.0
Under combined influence	2	1.3
Physical/mental difficulty	0	0.0
Fell asleep, fainted, etc	0	0.0
Failed to give full time and attention	6	4.0
Did not comply with license restrictions	0	0.0
Failed to yield right of way	6	4.0
Failed to obey stop sign	0	0.0
Failed to obey traffic signal	0	0.0
Failed to obey other traffic control	1	0.7
Illegally in roadway	46	30.9
Bicycle violation	0	0.0
Clothing not visible	16	10.7
Other factors	3	2.0
Not applicable	64	43.0
Unknown	0	0.0
Total Pedestrians	149	100.0

** The sum of the numbers and percentages is greater than total pedestrians killed as more than one factor may be present for the same pedestrian.*

Table 80 - Pedalcyclists Killed or Injured, by Age and Location

Age (Years)	Location				Total	
	Intersection		Nonintersection			
	Number	Percent	Number	Percent	Number	Percent
Pedalcyclists Killed						
<5	0	0.0	0	0.0	0	0.0
5-9	0	0.0	0	0.0	0	0.0
10-15	0	0.0	1	100.0	1	100.0
16-20	1	100.0	0	0.0	1	100.0
21-24	0	0.0	0	0.0	0	0.0
25-34	0	0.0	1	100.0	1	100.0
35-44	0	0.0	1	100.0	1	100.0
45-54	0	0.0	3	100.0	3	100.0
55-64	0	0.0	0	0.0	0	0.0
65-74	0	0.0	0	0.0	0	0.0
75+	0	0.0	0	0.0	0	0.0
Unknown	0	0.0	0	0.0	0	0.0
Total	1	14.3	6	85.7	7	100.0
Pedalcyclists Injured						
<5	2	40.0	3	60.0	5	100.0
5-9	21	34.4	40	65.6	61	100.0
10-15	61	38.1	99	61.9	160	100.0
16-20	38	43.2	50	56.8	88	100.0
21-24	29	58.0	21	42.0	50	100.0
25-34	25	35.2	46	64.8	71	100.0
35-44	27	38.0	44	62.0	71	100.0
45-54	33	44.6	41	55.4	74	100.0
55-64	15	45.5	18	54.5	33	100.0
65-74	3	50.0	3	50.0	6	100.0
75+	2	50.0	2	50.0	4	100.0
Unknown	9	40.9	13	59.1	22	100.0
Total	265	41.1	380	58.9	645	100.0

Table 81 - Pedalcyclists Killed or Injured and Fatality and Injury Rates per 100,000 Population, by Age and Sex

Age(Years)	Male			Female			Total		
	Killed	Population	Rate	Killed	Population	Rate	Killed	Population	Rate
10-15	1	233,033	0.43	0	223,772	0.0	1	456,805	0.22
16-20	1	204,456	0.49	0	198,038	0.0	1	402,494	0.25
25-34	1	355,964	0.28	0	365,492	0.0	1	721,456	0.14
35-44	1	410,405	0.24	0	437,628	0.0	1	848,033	0.12
45-54	3	415,112	0.72	0	449,727	0.0	3	864,839	0.35
Total	7	1,618,970	0.43	0	1,674,657	0.0	7	3,293,627	0.21
Age(Years)	Male			Female			Total		
	Injured	Population	Rate	Injured	Population	Rate	Injured	Population	Rate
<5	5	192,592	2.60	0	184,153	0	5	376,745	1.33
5-9	46	183,090	25.12	15	175,750	8.53	61	358,840	17.00
10-15	138	233,033	59.22	22	223,772	9.83	160	456,805	35.03
16-20	77	204,456	37.66	11	198,038	5.55	88	402,494	21.86
21-24	34	153,486	22.15	16	150,316	10.64	50	303,802	16.46
25-34	60	355,964	16.86	11	365,492	3.01	71	721,456	9.84
35-44	56	410,405	13.65	15	437,628	3.43	71	848,033	8.37
45-54	65	415,112	15.66	9	449,727	2.00	74	864,839	8.56
55-64	28	295,457	9.48	5	328,064	1.52	33	623,521	5.29
65-74	4	158,794	2.52	2	191,440	1.04	6	350,234	1.71
75+	3	116,201	2.58	1	195,374	0.51	4	311,575	1.28
Unknown	21			1			22		
Total	537	2,718,590	19.75	108	2,899,754	3.72	645	5,618,344	11.48

Table 82 - Pedalcyclists Killed or Injured by Time of Day and Day of Week

Time of Day	Day of Week				Total	
	Weekday		Weekend			
	Number	Percent	Number	Percent	Number	Percent
Pedalcyclists Killed						
Midnight to 3 am	0	0.0	0	0.0	0	0.0
3 am to 6 am	0	0.0	0	0.0	0	0.0
6 am to 9 am	1	16.7	0	0.0	1	14.3
9 am to Noon	2	33.3	0	0.0	2	28.6
Noon to 3 pm	0	0.0	0	0.0	0	0.0
3 pm to 6 pm	2	33.3	0	0.0	2	28.6
6 pm to 9 pm	0	0.0	0	0.0	0	0.0
9 pm to Midnight	1	16.7	1	100.0	2	28.6
Total	6	100.0	1	100.0	7	100.0
Pedalcyclists Injured						
Midnight to 3 am	4	0.9	10	5.2	14	2.2
3 am to 6 am	5	1.1	2	1.0	7	1.1
6 am to 9 am	52	11.5	6	3.1	58	9.0
9 am to Noon	40	8.8	24	12.5	64	9.9
Noon to 3 pm	72	15.9	42	21.9	114	17.7
3 pm to 6 pm	158	34.9	44	22.9	202	31.3
6 pm to 9 pm	101	22.3	47	24.5	148	22.9
9 pm to Midnight	21	4.6	17	8.9	38	5.9
Total	453	100.0	192	100.0	645	100.0

Table 83 - Pedalcyclists Killed or Injured in Single-Vehicle Crashes, by Vehicle Type and Initial Point of Impact

Vehicle Type	Initial Point of Impact												Total	
	Front		Left		Right		Rear		Other		Unknown			
	No.	%	No.	%	No.	%	No.	%	No.	%	No.	%	No.	%
Pedalcyclists Killed														
Passenger Car	3	100.0	0	0.0	0	0.0	0	0.0	0	0.0	0	0.0	3	100.0
Light Truck	1	33.3	2	66.7	0	0.0	0	0.0	0	0.0	0	0.0	3	100.0
Large Truck	0	0.0	0	0.0	0	0.0	0	0.0	0	0.0	0	0.0	0	0.0
Bus	0	0.0	0	0.0	0	0.0	0	0.0	0	0.0	0	0.0	0	0.0
Other/Unknown	0	0.0	0	0.0	0	0.0	0	0.0	0	0.0	0	0.0	0	0.0
Motorcycle	0	0.0	0	0.0	0	0.0	0	0.0	0	0.0	0	0.0	0	0.0
Total	4	66.7	2	33.3	0	0.0	0	0.0	0	0.0	0	0.0	6	100.0
Pedalcyclists Injured														
Passenger Car	181	52.5	34	9.9	65	18.8	15	4.3	7	2.0	43	12.5	345	100.0
Light Truck	126	56.0	19	8.4	52	23.1	6	2.7	1	0.4	21	9.3	225	100.0
Large Truck	1	11.1	1	11.1	2	22.2	2	22.2	0	0.0	3	33.3	9	100.0
Bus	1	20.0	1	20.0	3	60.0	0	0.0	0	0.0	0	0.0	5	100.0
Other/Unknown	2	25.0	1	12.5	0	0.0	0	0.0	0	0.0	5	62.5	8	100.0
Motorcycle	0	0.0	1	100	0	0.0	0	0.0	0	0.0	0	0.0	1	100.0
Total	311	52.4	57	9.6	122	20.6	23	3.9	8	1.3	72	12.1	593	100.0

Table 84 - Pedalcyclists Killed, by Related Factors

Factors	Number	Percent
Under influence of drugs	0	0.0
Under influence of alcohol	2	12.5
Under influence of medication	0	0.0
Under combined influence	0	0.0
Physical/mental difficulty	0	0.0
Fell asleep, fainted, etc	0	0.0
Failed to give full time and attention	1	6.3
Did not comply with license restrictions	0	0.0
Failed to yield right of way	3	18.8
Failed to obey stop sign	0	0.0
Failed to obey traffic signal	1	6.3
Failed to obey other traffic control	0	0.0
Failed to keep right of center	1	6.3
Too fast for condition	1	6.3
Illegally in roadway	3	18.8
Bicycle violation	1	6.3
Clothing not visible	1	6.3
Other factors	0	0.0
Not applicable	1	6.3
Unknown	1	6.3
Total Pedestrians	16	100.0

*** Since there are only seven pedalcyclists killed, all four contributing circumstances are included. The sum of the numbers and percentages is greater than total pedestrians killed as more than one factor may be present for the same pedestrian.*

Chapter 5: 2007 Counties

Table 85 - Fatality and Total Crash Rates per VMT, Population, Licensed Driver, and Registered Vehicle by County, 2007

County	Fatalities	Total Crashes	VMT (mill.)	Pop.*	Licensed Drivers †	Regist. Vehicles †	Fatality Rates per**				Total Crash Rates per**			
							VMT	Pop.	Licen. Dr.	Regist. Veh.	VMT	Pop.	Licen. Dr.	Regist. Veh.
Allegany	8	786	823	72,594	50,601	63,369	0.97	1.10	1.58	1.26	95.5	108.3	155.3	124.0
Anne Arundel	48	8,850	5,785	512,154	383,061	527,091	0.83	0.94	1.25	0.91	153.0	172.8	231.0	167.9
Baltimore	72	15,719	8,261	788,994	577,557	675,824	0.87	0.91	1.25	1.07	190.3	199.2	272.2	232.6
Calvert	17	1,224	762	88,223	65,268	90,753	2.23	1.93	2.60	1.87	160.6	138.7	187.5	134.9
Caroline	6	437	387	32,910	25,208	37,442	1.55	1.82	2.38	1.60	112.9	132.8	173.4	116.7
Carroll	21	2,168	1,298	169,220	128,170	176,716	1.62	1.24	1.64	1.19	167.0	128.1	169.2	122.7
Cecil	22	1,702	1,388	99,695	72,115	92,683	1.59	2.21	3.05	2.37	122.6	170.7	236.0	183.6
Charles	23	2,773	1,284	140,444	101,590	137,519	1.79	1.64	2.26	1.67	216.0	197.4	273.0	201.6
Dorchester	2	471	416	31,846	23,406	32,265	0.48	0.63	0.85	0.62	113.2	147.9	201.2	146.0
Frederick	25	3,074	3,009	224,705	170,710	223,914	0.83	1.11	1.46	1.12	102.2	136.8	180.1	137.3
Garrett	8	583	559	29,627	22,102	33,573	1.43	2.70	3.62	2.38	104.3	196.8	263.8	173.7
Harford	30	3,388	2,362	239,993	182,993	234,782	1.27	1.25	1.64	1.28	143.4	141.2	185.1	144.3
Howard	20	3,379	3,814	273,669	210,393	246,112	0.52	0.73	0.95	0.81	88.6	123.5	160.6	137.3
Kent	8	224	235	19,987	15,309	21,071	3.40	4.00	5.23	3.80	95.3	112.1	146.3	106.3
Montgomery	49	12,460	7,473	930,813	711,194	729,670	0.66	0.53	0.69	0.67	166.7	133.9	175.2	170.8
Prince George's	126	15,060	8,755	828,770	547,775	633,364	1.44	1.52	2.30	1.99	172.0	181.7	274.9	237.8
Queen Anne's	12	716	977	46,571	34,992	54,130	1.23	2.58	3.43	2.22	73.3	153.7	204.6	132.3
St. Mary's	10	1,354	847	100,378	70,785	100,678	1.18	1.00	1.41	0.99	159.9	134.9	191.3	134.5
Somerset	1	366	299	26,016	14,351	21,131	0.33	0.38	0.70	0.47	122.4	140.7	255.0	173.2
Talbot	11	861	627	36,193	29,467	42,459	1.75	3.04	3.73	2.59	137.3	237.9	292.2	202.8
Washington	21	2,683	2,091	145,113	104,163	137,531	1.00	1.45	2.02	1.53	128.3	184.9	257.6	195.1
Wicomico	18	1,998	1,016	93,600	68,192	92,269	1.77	1.92	2.64	1.95	196.7	213.5	293.0	216.5
Worcester	11	1,273	672	49,374	42,035	58,574	1.64	2.23	2.62	1.88	189.4	257.8	302.8	217.3
Baltimore City	46	19,394	3,626	637,455	314,729	285,837	1.27	0.72	1.46	1.61	534.9	304.2	616.2	678.5
Total	615	100,943	56,766	5,618,344	3,966,166	4,748,757	1.08	1.09	1.55	1.30	177.8	179.7	254.5	212.6

1. Source: *Maryland Department of Planning † Maryland Motor Vehicle Administration

2. ** Fatality and Total Crash rates per VMT are calculated per 100 Million Vehicle Miles of Travel

Fatality and Total Crash rates per Population/Licensed Drivers/Registered Vehicles are calculated per 10,000

Table 86 - 2007 Traffic Fatalities by County and Percent Change from 2006

County	Fatalities		Percent Change
	2006	2007	
Allegany	10	8	-20.0
Anne Arundel	61	48	-21.3
Baltimore	68	72	5.9
Calvert	21	17	-19.0
Caroline	14	6	-57.1
Carroll	24	21	-12.5
Cecil	23	22	-4.3
Charles	30	23	-23.3
Dorchester	4	2	-50.0
Frederick	33	25	-24.2
Garrett	4	8	100.0
Harford	24	30	25.0
Howard	23	20	-13.0
Kent	6	8	33.3
Montgomery	58	49	-15.5
Prince Georges	111	126	13.5
Queen Anne's	9	12	33.3
St. Mary's	17	10	-41.2
Somerset	4	1	-75.0
Talbot	6	11	83.3
Washington	31	21	-32.3
Wicomico	15	18	20.0
Worcester	11	11	0.0
Baltimore City	44	46	4.5
Maryland	651	615	-5.5

Table 87 - Fatal Crashes, by County and First Harmful Event

County	First Harmful Event										Total Fatal Crashes	
	Collision With						Noncollision					
	Motor Vehicle in Transport		Object Not Fixed		Fixed Object		Noncollision		Other/Unknown			
	Number	%	Number	%	Number	%	Number	%	Number	%	Number	%
Allegany	3	42.9	2	28.6	1	14.3	1	14.3	0	0	7	100.0
Anne Arundel	15	34.9	14	32.6	9	20.9	3	7.0	2	4.7	43	100.0
Baltimore	18	26.9	31	46.3	17	25.4	1	1.5	0	0	67	100.0
Baltimore City	11	26.8	10	24.4	18	43.9	2	4.9	0	0	41	100.0
Calvert	11	78.6	3	21.4	0	0	0	0	0	0	14	100.0
Caroline	2	33.3	4	66.7	0	0	0	0	0	0	6	100.0
Carroll	11	61.1	3	16.7	2	11.1	1	5.6	1	5.6	18	100.0
Cecil	8	40.0	8	40.0	1	5.0	3	15.0	0	0	20	100.0
Charles	5	26.3	5	26.3	6	31.6	3	15.8	0	0	19	100.0
Dorchester	2	100.0	0	0	0	0	0	0	0	0	2	100.0
Frederick	9	45.0	8	40.0	2	10.0	1	5.0	0	0	20	100.0
Garrett	1	16.7	4	66.7	1	16.7	0	0	0	0	6	100.0
Harford	12	42.9	6	21.4	5	17.9	4	14.3	1	3.6	28	100.0
Howard	5	29.4	8	47.1	3	17.6	1	5.9	0	0	17	100.0
Kent	1	16.7	4	66.7	0	0	1	16.7	0	0	6	100.0
Montgomery	9	19.1	17	36.2	16	34.0	5	10.6	0	0	47	100.0
Prince Georges	44	36.4	41	33.9	31	25.6	5	4.1	0	0	121	100.0
Queen Anne's	11	100.0	0	0	0	0	0	0	0	0	11	100.0
Somerset	1	100.0	0	0	0	0	0	0	0	0	1	100.0
St. Mary's	1	11.1	4	44.4	1	11.1	3	33.3	0	0	9	100.0
Talbot	4	44.4	2	22.2	2	22.2	0	0	1	11.1	9	100.0
Washington	6	31.6	7	36.8	1	5.3	5	26.3	0	0	19	100.0
Wicomico	7	41.2	5	29.4	3	17.6	2	11.8	0	0	17	100.0
Worcester	2	20.0	2	20.0	3	30.0	3	30.0	0	0	10	100.0
Maryland	199	35.7	188	33.7	122	21.9	44	7.9	5	0.9	558	100.0

Table 88 - Fatal Crashes, by County and Roadway Function Class

County	Roadway Function Class									Total Fatal Crashes
	Interstate			US	Maryland	County	City	Municipal	Unknown	
	Rural	Urban	Unknown							
Allegany	0	0	0	3	3	0	0	1	0	7
Anne Arundel	0	3	0	3	30	5	0	1	1	43
Baltimore	0	14	2	5	24	22	0	0	0	67
Baltimore City	0	2	1	0	0	0	38	0	0	41
Calvert	0	0	0	0	10	4	0	0	0	14
Caroline	0	0	0	0	5	1	0	0	0	6
Carroll	0	1	0	0	10	7	0	0	0	18
Cecil	0	0	0	6	8	6	0	0	0	20
Charles	0	0	0	2	11	6	0	0	0	19
Dorchester	0	0	0	1	1	0	0	0	0	2
Frederick	3	0	0	6	7	3	0	1	0	20
Garrett	2	0	0	0	2	2	0	0	0	6
Harford	0	1	0	8	12	7	0	0	0	28
Howard	0	3	0	5	4	3	0	0	2	17
Kent	0	0	0	0	4	2	0	0	0	6
Montgomery	1	4	1	4	21	16	0	0	0	47
Prince Georges	0	24	0	7	62	23	0	4	1	121
Queen Anne's	0	0	0	5	6	0	0	0	0	11
Somerset	0	0	0	0	1	0	0	0	0	1
St. Mary's	0	0	0	0	7	2	0	0	0	9
Talbot	0	0	0	5	3	1	0	0	0	9
Washington	2	2	0	6	6	2	0	1	0	19
Wicomico	0	0	0	6	3	8	0	0	0	17
Worcester	0	0	0	6	2	2	0	0	0	10
Maryland	8	54	4	78	242	122	38	8	4	558

Table 89 - Fatalities, by County and Roadway Function Class

County	Roadway Function Class									Total Fatalities
	Interstate			US	Maryland	County	City	Municipal	Unknown	
	Rural	Urban	Unknown							
Allegany	0	0	0	4	3	0	0	1	0	8
Anne Arundel	0	4	0	5	31	6	0	1	1	48
Baltimore	0	14	0	6	27	23	0	0	0	72
Baltimore City	0	2	1	0	0	0	43	0	0	46
Calvert	0	0	0	0	13	4	0	0	0	17
Caroline	0	0	0	0	5	1	0	0	0	6
Carroll	0	1	0	0	13	7	0	0	0	21
Cecil	0	0	0	7	8	7	0	0	0	22
Charles	0	0	0	2	12	9	0	0	0	23
Dorchester	0	0	0	1	1	0	0	0	0	2
Frederick	5	0	0	8	8	3	0	1	0	25
Garrett	2	0	0	0	2	4	0	0	0	8
Harford	0	2	0	8	12	8	0	0	0	30
Howard	0	4	0	6	5	3	0	0	2	20
Kent	0	0	0	0	5	3	0	0	0	8
Montgomery	1	5	1	5	21	16	0	0	0	49
Prince Georges	0	25	0	7	64	25	0	4	1	126
Queen Anne's	0	0	0	5	7	0	0	0	0	12
Somerset	0	0	0	0	1	0	0	0	0	1
St. Mary's	0	0	0	0	8	2	0	0	0	10
Talbot	0	0	0	6	4	1	0	0	0	11
Washington	2	2	0	7	7	2	0	1	0	21
Wicomico	0	0	0	7	3	8	0	0	0	18
Worcester	0	0	0	7	2	2	0	0	0	11
Maryland	10	59	4	91	262	134	43	8	4	615

Table 90 – Persons Killed, Licensed Drivers, Registered Vehicles, Population, and Fatality Rates by County

County	Licensed Drivers	Fatalities per 10,000 Licensed Drivers	Registered Vehicles	Fatalities per 10,000 Registered Vehicles	Population	Fatalities per 10,000 Population	Total Killed
Allegany	50,601	1.58	63,369	1.26	72,594	1.10	8
Anne Arundel	383,061	1.25	527,091	0.91	512,154	0.94	48
Baltimore	577,557	1.25	675,824	1.07	788,994	0.91	72
Calvert	65,268	2.60	90,753	1.87	88,223	1.93	17
Caroline	25,208	2.38	37,442	1.60	32,910	1.82	6
Carroll	128,170	1.64	176,716	1.19	169,220	1.24	21
Cecil	72,115	3.05	92,683	2.37	99,695	2.21	22
Charles	101,590	2.26	137,519	1.67	140,444	1.64	23
Dorchester	23,406	0.85	32,265	0.62	31,846	0.63	2
Frederick	170,710	1.46	223,914	1.12	224,705	1.11	25
Garrett	22,102	3.62	33,573	2.38	29,627	2.70	8
Harford	182,993	1.64	234,782	1.28	239,993	1.25	30
Howard	210,393	0.95	246,112	0.81	273,669	0.73	20
Kent	15,309	5.23	21,071	3.80	19,987	4.00	8
Montgomery	711,194	0.69	729,670	0.67	930,813	0.53	49
Prince Georges	547,775	2.30	633,364	1.99	828,770	1.52	126
Queen Annes	34,992	3.43	54,130	2.22	46,571	2.58	12
St. Marys	70,785	1.41	100,678	0.99	100,378	1.00	10
Somerset	14,351	0.70	21,131	0.47	26,016	0.38	1
Talbot	29,467	3.73	42,459	2.59	36,193	3.04	11
Washington	104,163	2.02	137,531	1.53	145,113	1.45	21
Wicomico	68,192	2.64	92,269	1.95	93,600	1.92	18
Worcester	42,035	2.62	58,574	1.88	49,374	2.23	11
Baltimore City	314,729	1.46	285,837	1.61	637,455	0.72	46
Maryland	3,966,166	1.55	4,748,757	1.30	5,618,344	1.09	615

Table 91 - Persons Killed, by County and Person Type

County	Person Type												Total Killed		
	Driver		Passenger		Motorcycle Riders		Pedestrian		Pedalcyclist		Other/Unknown				
	No.	%	No.	%	No.	%	No.	%	No.	%	No.	%	No.	%	
Allegany	7	87.5	1	12.5	0	0	0	0	0	0	0	0	0	8	100.0
Anne Arundel	23	47.9	11	22.9	6	12.5	8	16.7	0	0	0	0	0	48	100.0
Baltimore	30	41.7	10	13.9	14	19.4	17	23.6	1	1.4	0	0	0	72	100.0
Baltimore City	12	26.1	9	19.6	7	15.2	17	37.0	0	0	1	2.2	0	46	100.0
Calvert	9	52.9	4	23.5	4	23.5	0	0	0	0	0	0	0	17	100.0
Caroline	6	100.0	0	0	0	0	0	0	0	0	0	0	0	6	100.0
Carroll	12	57.1	5	23.8	2	9.5	2	9.5	0	0	0	0	0	21	100.0
Cecil	9	40.9	5	22.7	7	31.8	1	4.5	0	0	0	0	0	22	100.0
Charles	7	30.4	5	21.7	4	17.4	5	21.7	1	4.3	1	4.3	0	23	100.0
Dorchester	2	100.0	0	0	0	0	0	0	0	0	0	0	0	2	100.0
Frederick	15	60.0	5	20.0	4	16.0	1	4.0	0	0	0	0	0	25	100.0
Garrett	2	25.0	3	37.5	1	12.5	2	25.0	0	0	0	0	0	8	100.0
Harford	10	33.3	6	20.0	11	36.7	2	6.7	1	3.3	0	0	0	30	100.0
Howard	11	55.0	1	5.0	4	20.0	4	20.0	0	0	0	0	0	20	100.0
Kent	5	62.5	3	37.5	0	0	0	0	0	0	0	0	0	8	100.0
Montgomery	18	36.7	8	16.3	6	12.2	16	32.7	1	2.0	0	0	0	49	100.0
Prince Georges	64	50.8	16	12.7	16	12.7	28	22.2	1	0.8	1	0.8	0	126	100.0
Queen Anne's	7	58.3	5	41.7	0	0	0	0	0	0	0	0	0	12	100.0
Somerset	0	0	0	0	1	100.0	0	0	0	0	0	0	0	1	100.0
St. Mary's	4	40.0	3	30.0	2	20.0	1	10.0	0	0	0	0	0	10	100.0
Talbot	4	36.4	3	27.3	2	18.2	1	9.1	1	9.1	0	0	0	11	100.0
Washington	10	47.6	7	33.3	3	14.3	1	4.8	0	0	0	0	0	21	100.0
Wicomico	10	55.6	4	22.2	1	5.6	3	16.7	0	0	0	0	0	18	100.0
Worcester	6	54.5	1	9.1	2	18.2	1	9.1	1	9.1	0	0	0	11	100.0
Maryland	283	46.0	115	18.7	97	15.8	110	17.9	7	1.1	3	0.5	0	615	100.0

Table 92 - Persons Killed, by County and Age Group

County	Age Group (Years)												Total Killed
	<5	5-9	10-15	16-20	21-24	25-34	35-44	45-54	55-64	65-74	75+	Unknown	
Allegany	1	0	0	0	1	0	2	0.	2	2	0	0	8
Anne Arundel	0	1	2	10	6	8	9	6	1	1	3	1	48
Baltimore	1	0	0	7	10	17	15	9	8	3	2	0	72
Baltimore City	0	1	2	5	3	9	11	8	3	0.	4	0	46
Calvert	0	0	1	4	0	1	5	2	0	2	2	0	17
Caroline	0	0	0	0	3	1	0	2	0	0	0	0	6
Carroll	0	0	0	1	1	2	5	5	3	1	3	0	21
Cecil	0	0	0	4	1	6	3	2	1	5	0.	0	22
Charles	0	0	3	7	1	3	3	2	2	1	1	0	23
Dorchester	0	0	0	0	1	0	0	0	0	1	0.	0	2
Frederick	0	0	1	2	1	5	3	8	4	0	1	0	25
Garrett	0	0	1	0	1	2	0	2	1	0	1	0	8
Harford	0	0	0	5	5	5	2	4	5	2	2	0	30
Howard	0	0	0	2	7	2	4	2	2	1	0	0	20
Kent	0	0	0	2	0.	1	0	3	2	0	0	0	8
Montgomery	0	0	1	9	7	7	10	4	4	3	4	0	49
Prince Georges	0	2	5	8	19	26	25	20	14	2	4	1	126
Queen Anne's	1	0	2	1	0	1	2	2	0	2	1	0	12
Somerset	0	0	0	0	0	1	0	0	0	0	0	0	1
St. Mary's	0	0	0	2	1	3	2	0	0	0	2	0	10
Talbot	0	0	0	4	2	2	0.	1	1	1	0.	0	11
Washington	0	0	0	4	1	4	1	5	2	1	3	0	21
Wicomico	0	0	1	1	6	1	0	5	1	2	1	0	18
Worcester	0	0	0	3	3	2	0	2	1	0	0	0	11
Maryland	3	4	19	81	80	109	102	94	57	30	34	2	615

Table 93 - Occupants Killed, by County and Vehicle Type

County	Vehicle Type										Total Occupants Killed	
	Passenger Car		Light Truck		Large Truck		Other /Unknown		Motorcycle			
	No.	%	No.	%	No.	%	No.	%	No.	%	No.	%
Allegany	4	50.0	4	50.0	0	0.0	0	00.0	0	0.0	8	100.0
Anne Arundel	24	60.0	9	22.5	0	0.0	1	2.5	6	15.0	40	100.0
Baltimore	31	57.4	7	13.0	1	1.9	1	1.9	14	25.9	54	100.0
Baltimore City	12	42.9	6	21.4	1	3.6	2	7.1	7	25.0	28	100.0
Calvert	6	35.3	7	41.2	0	0.0	0	0.0	4	23.5	17	100.0
Caroline	5	83.3	1	16.7	0	0.0	0	0.0	0	0.0	6	100.0
Carroll	8	42.1	9	47.4	0	0.0	0	0.0	2	10.5	19	100.0
Cecil	8	38.1	6	28.6	0	0.0	0	0.0	7	33.3	21	100.0
Charles	8	50.0	4	25.0	0	0.0	0	0.0	4	25.0	16	100.0
Dorchester	1	50.0	0	0.0	0	0.0	1	50.0	0	0.0	2	100.0
Frederick	6	25.0	12	50.0	2	8.3	0	0.0	4	16.7	24	100.0
Garrett	3	50.0	2	33.3	0	0.0	0	0.0	1	16.7	6	100.0
Harford	11	40.7	5	18.5	0	0.0	0	0.0	11	40.7	27	100.0
Howard	7	43.8	5	31.3	0	0.0	0	0.0	4	25.0	16	100.0
Kent	4	50.0	3	37.5	1	12.5	0	0.0	0	0.0	8	100.0
Montgomery	21	65.6	5	15.6	0	0.0	0	0.0	6	18.8	32	100.0
Prince Georges	55	57.3	24	25.0	1	1.0	0	0.0	16	16.7	96	100.0
Queen Anne's	8	66.7	4	33.3	0	0.0	0	0.0	0	0.0	12	100.0
Somerset	0	0.0	0	0.0	0	0.0	0	0.0	1	100.0	1	100.0
St. Mary's	4	44.4	3	33.3	0	0.0	0	0.0	2	22.2	9	100.0
Talbot	6	66.7	1	11.1	0	0.0	0	0.0	2	22.2	9	100.0
Washington	11	55.0	5	25.0	1	5.0	0	0.0	3	15.0	20	100.0
Wicomico	6	40.0	8	53.3	0	0.0	0	0.0	1	6.7	15	100.0
Worcester	5	55.6	1	11.1	1	11.1	0	0.0	2	22.2	9	100.0
Maryland	254	51.3	131	26.5	8	1.6	5	1.0	97	19.6	495	100.0

Table 94 - Passenger Car and Light Truck Occupants Killed, by County and Restraint Use

County	Restraint Use						Total Occupants Killed	
	Used		Not Used		Other/Unknown		Number	Percent
	Number	Percent	Number	Percent	Number	Percent		
Allegany	6	75.0	1	12.5	1	12.5	8	100.0
Anne Arundel	16	48.5	14	42.4	3	9.1	33	100.0
Baltimore	17	44.7	16	42.1	5	13.2	38	100.0
Baltimore City	8	44.4	10	55.6	0	0.0	18	100.0
Calvert	6	46.2	7	53.8	0	0.0	13	100.0
Caroline	1	16.7	5	83.3	0	0.0	6	100.0
Carroll	8	47.1	9	52.9	0	0.0	17	100.0
Cecil	8	57.1	4	28.6	2	14.3	14	100.0
Charles	3	25.0	9	75.0	0	0.0	12	100.0
Dorchester	0	0.0	1	100.0	0	0.0	1	100.0
Frederick	11	61.1	7	38.9	0	0.0	18	100.0
Garrett	5	100.0	0	0.0	0	0.0	5	100.0
Harford	10	62.5	5	31.3	1	6.3	16	100.0
Howard	10	83.3	2	16.7	0	0.0	12	100.0
Kent	4	57.1	3	42.9	0	0.0	7	100.0
Montgomery	12	46.2	12	46.2	2	7.7	26	100.0
Prince Georges	33	41.8	36	45.6	10	12.7	79	100.0
Queen Anne's	8	66.7	3	25.0	1	8.3	12	100.0
Somerset	0	0.0	0	0.0	0	0.0	0	100.0
St. Mary's	2	28.6	4	57.1	1	14.3	7	100.0
Talbot	4	57.1	2	28.6	1	14.3	7	100.0
Washington	9	56.3	7	43.8	0	0.0	16	100.0
Wicomico	10	71.4	4	28.6	0	0.0	14	100.0
Worcester	2	33.3	1	16.7	3	50.0	6	100.0
Maryland	193	50.1	162	42.1	30	7.8	385	100.0

Table 95 - 2007 Ranking of County Pedestrian Fatality Rates

Rank	County	Pedestrians Killed	Population	Pedestrian Fatality Rate per 100,000 Population
1	Garrett	2	29,627	6.75
2	Charles	5	140,444	3.56
3	Prince Georges	28	828,770	3.38
4	Wicomico	3	93,600	3.21
5	Talbot	1	36,193	2.76
6	Baltimore	17	637,455	2.67
7	Baltimore City	17	788,994	2.15
8	Worcester	1	49,374	2.03
9	Montgomery	16	930,813	1.72
10	Anne Arundel	8	512,154	1.56
11	Howard	4	273,669	1.46
12	Carroll	2	169,220	1.18
13	Cecil	1	99,695	1.00
14	St. Mary's	1	100,378	1.00
15	Harford	2	239,993	0.83
16	Washington	1	145,113	0.69
17	Frederick	1	224,705	0.45
18	Allegany	0	72,594	0.00
19	Calvert	0	88,223	0.00
20	Caroline	0	32,910	0.00
21	Dorchester	0	31,846	0.00
22	Kent	0	19,987	0.00
23	Queen Anne's	0	46,571	0.00
24	Somerset	0	26,016	0.00
	Maryland	110	5,618,344	1.96

Table 96 – Persons Killed, by County and Highest Blood Alcohol Concentration (BAC) in the Crash - 2007

County	Highest Blood Alcohol Concentration in Crash						Total Killed in Alcohol--Related Crashes		Total Killed	
	BAC=0.00		BAC=0.01--0.07		BAC=0.08+		Number	Percent	Number	Percent
	Number	Percent	Number	Percent	Number	Percent				
Allegany	4	50	0	0	4	50	4	50	8	100
Anne Arundel	34	71	1	3	12	26	14	29	48	100
Baltimore	36	50	5	7	31	43	36	50	72	100
Calvert	12	68	0	1	5	32	6	32	17	100
Caroline	2	32	0	4	3	64	3	68	5	100
Carroll	18	83	2	10	1	6	4	17	21	100
Cecil	13	57	3	15	6	28	10	43	22	100
Charles	20	85	1	4	3	11	4	15	23	100
Dorchester	1	33	0	0	2	67	2	67	3	100
Frederick	20	80	1	4	4	16	5	20	25	100
Garrett	5	60	0	5	3	35	3	40	8	100
Harford	21	74	2	6	6	20	8	26	29	100
Howard	9	45	2	8	10	48	11	55	20	100
Kent	4	48	0	3	4	50	4	53	8	100
Montgomery	33	69	4	9	11	22	15	31	48	100
Prince George's	74	59	11	9	40	32	51	41	125	100
Queen Anne's	10	87	0	1	2	13	2	13	12	100
St. Mary's	5	52	1	6	4	42	5	48	10	100
Somerset	1	80	0	0	0	20	0	20	1	100
Talbot	8	68	0	1	4	31	4	32	12	100
Washington	15	69	0	0	6	30	7	31	21	100
Wicomico	9	52	3	18	5	30	9	48	18	100
Worcester	5	48	3	31	2	21	6	52	11	100
Baltimore	32	67	5	11	10	21	15	33	47	100
Maryland	389	63	46	8	179	29	225	37	614	100

Table 97 – Drivers Involved in Fatal Crashes, by County and Blood Alcohol Concentration (BAC) of the Driver - 2007

County	Blood Alcohol Concentration of the Driver								Total Drivers Involved in Fatal Crashes	
	BAC=0.00		BAC=0.01--0.07		BAC=0.08+		Any Alcohol (BAC = 0.01+)		Number	Percent
	Number	Percent	Number	Percent	Number	Percent	Number	Percent		
Allegany	10	77	0	0	3	23	3	23	13	100
Anne Arundel	60	82	1	2	11	16	13	18	73	100
Baltimore	64	66	6	6	27	28	34	34	98	100
Calvert	27	83	0	0	5	17	6	17	32	100
Caroline	4	51	0	3	3	46	3	49	7	100
Carroll	31	92	1	4	1	4	3	8	33	100
Cecil	19	64	3	11	7	24	10	36	29	100
Charles	23	90	1	4	2	6	3	10	25	100
Dorchester	3	54	0	0	2	46	2	46	5	100
Frederick	28	86	1	3	3	11	5	14	32	100
Garrett	5	70	0	3	2	27	2	30	7	100
Harford	36	85	2	4	5	11	7	15	43	100
Howard	12	56	1	6	8	37	10	44	22	100
Kent	4	54	0	1	3	44	3	46	7	100
Montgomery	43	76	3	6	10	18	14	24	57	100
Prince George's	134	73	9	5	41	22	51	27	185	100
Queen Anne's	26	94	0	0	1	5	2	6	27	100
St. Mary's	6	61	0	3	4	36	4	39	10	100
Somerset	2	90	0	0	0	10	0	10	2	100
Talbot	18	86	0	0	3	13	3	14	21	100
Washington	21	79	0	0	5	20	5	21	26	100
Wicomico	17	70	2	9	5	22	8	30	25	100
Worcester	7	57	3	25	2	18	6	43	13	100
Baltimore	44	78	3	6	9	16	12	22	56	100
Maryland	642	76	40	5	166	20	206	24	848	100

Table 98 – Drivers Killed in Fatal Crashes, by County and Blood Alcohol Concentration (BAC) of the Driver - 2007

County	Blood Alcohol Concentration of the Driver								Total Drivers Killed in Fatal Crashes	
	BAC=0.00		BAC=0.01--0.07		BAC=0.08+		Any Alcohol (BAC = 0.01+)		Number	Percent
	Number	Percent	Number	Percent	Number	Percent	Number	Percent		
Allegany	4	57	0	0	3	43	3	43	7	100
Anne Arundel	20	70	0	0	8	30	8	30	28	100
Baltimore	18	44	3	7	21	49	24	56	42	100
Calvert	9	69	0	0	4	31	4	31	13	100
Caroline	2	34	0	4	3	62	3	66	5	100
Carroll	12	86	1	7	1	7	2	14	14	100
Cecil	7	49	3	21	4	29	8	51	15	100
Charles	9	82	1	9	1	9	2	18	11	100
Dorchester	1	33	0	0	2	67	2	67	3	100
Frederick	15	82	0	0	3	18	3	18	18	100
Garrett	2	67	0	0	1	33	1	33	3	100
Harford	15	77	1	6	3	16	4	23	19	100
Howard	7	47	1	7	7	47	8	53	15	100
Kent	3	60	0	0	2	40	2	40	5	100
Montgomery	13	58	3	14	6	28	9	42	22	100
Prince George's	46	59	5	7	26	34	32	41	78	100
Queen Anne's	7	97	0	0	0	3	0	3	7	100
St. Mary's	2	38	0	5	3	57	4	62	6	100
Somerset	1	80	0	0	0	20	0	20	1	100
Talbot	4	60	0	1	3	39	3	40	7	100
Washington	8	62	0	0	5	38	5	38	13	100
Wicomico	7	62	1	9	3	29	4	38	11	100
Worcester	3	40	2	30	2	30	4	60	7	100
Baltimore	14	70	2	10	4	20	6	30	20	100
Maryland	228	62	25	7	117	32	142	38	370	100

Table 99 – Surviving Drivers Involved in Fatal Crashes, by County and Blood Alcohol Concentration (BAC) of the Driver - 2007

County	Blood Alcohol Concentration of the Driver								Total Surviving Drivers in Fatal Crashes	
	BAC=0.00		BAC=0.01--0.07		BAC=0.08+		Any Alcohol (BAC = 0.01+)			
	Number	Percent	Number	Percent	Number	Percent	Number	Percent	Number	Percent
Allegany	6	100	0	0	0	0	0	0	6	100
Anne Arundel	41	90	1	3	3	7	4	10	45	100
Baltimore	46	82	3	6	7	12	10	18	56	100
Calvert	18	92	0	1	1	7	2	8	19	100
Caroline	2	95	0	0	0	5	0	5	2	100
Carroll	19	97	0	1	0	2	1	3	19	100
Cecil	11	80	0	1	3	19	3	20	14	100
Charles	14	96	0	0	1	4	1	4	14	100
Dorchester	2	85	0	0	0	15	0	15	2	100
Frederick	13	91	1	8	0	1	1	9	14	100
Garrett	3	73	0	5	1	23	1	28	4	100
Harford	22	90	1	2	2	8	2	10	24	100
Howard	5	77	0	6	1	17	2	23	7	100
Kent	1	40	0	5	1	55	1	60	2	100
Montgomery	31	87	0	1	4	12	5	13	35	100
Prince George's	88	82	4	4	15	14	19	18	107	100
Queen Anne's	19	94	0	1	1	6	1	7	20	100
St. Mary's	4	95	0	0	0	5	0	5	4	100
Somerset	1	100	0	0	0	0	0	0	1	100
Talbot	14	99	0	0	0	1	0	1	14	100
Washington	13	97	0	1	0	2	0	3	13	100
Wicomico	11	76	1	9	2	16	3	24	14	100
Worcester	5	77	1	20	0	3	1	23	6	100
Baltimore	30	82	1	3	5	14	6	18	36	100
Maryland	414	87	15	3	49	10	64	13	478	100

Table 100 - Fatalities and Fatality Rates by County, 2003-2007

County	Fatalities						Fatality Rate per 100 Million Vehicle Miles Traveled					
	2003	2004	2005	2006	2007	Difference, 2003-2007	2003	2004	2005	2006	2007	Difference, 2003-2007
Allegany	8	9	11	10	8	0	0.95	1.09	1.28	1.20	0.97	+.02
Anne Arundel	66	53	54	61	48	-18	1.18	0.94	0.94	1.06	0.83	-.35
Baltimore	87	80	73	68	72	-15	1.08	0.99	0.88	0.82	0.87	-.21
Calvert	19	16	10	21	17	-2	2.63	2.11	1.26	2.74	2.23	-.40
Caroline	8	11	10	14	6	-2	2.33	3.12	2.46	3.52	1.55	-.78
Carroll	26	19	21	24	21	-5	2.08	1.49	1.58	1.85	1.62	-.46
Cecil	23	25	21	23	22	-1	1.87	2.10	1.68	1.84	1.59	-.28
Charles	20	16	40	30	23	+3	1.70	1.28	3.01	2.34	1.79	+.09
Dorchester	7	7	6	4	2	-5	1.93	1.89	1.42	0.95	0.48	-1.45
Frederick	18	28	33	33	25	+7	0.66	0.98	1.11	1.09	0.83	+.17
Garrett	16	12	8	4	8	-8	3.29	2.38	1.36	0.70	1.43	-1.86
Harford	35	19	22	24	30	-5	1.55	0.84	0.95	1.05	1.27	-.28
Howard	20	33	18	23	20	0	0.55	0.89	0.48	0.61	0.52	-.03
Kent	1	3	1	6	8	+7	0.44	1.29	0.41	2.50	3.40	+2.96
Montgomery	52	79	44	58	49	-3	0.70	1.07	0.58	0.77	0.66	-.04
Prince Georges	122	121	134	111	126	+4	1.41	1.40	1.50	1.27	1.44	+.03
Queen Annes	14	11	7	9	12	-2	1.54	1.18	0.71	0.91	1.23	-.31
St. Marys	16	4	14	17	10	-6	2.06	0.50	1.68	2.03	1.18	-.88
Somerset	3	4	2	4	1	-2	1.05	1.38	0.65	1.28	0.33	-.72
Talbot	3	6	7	6	11	+8	0.48	1.00	1.12	0.95	1.75	+1.27
Washington	26	17	21	31	21	-5	1.32	0.87	1.05	1.48	1.00	-.32
Wicomico	16	14	13	15	18	+2	1.90	1.58	1.40	1.47	1.77	-.13
Worcester	9	12	10	11	11	+2	1.34	1.86	1.49	1.63	1.64	+.30
Baltimore City	36	44	34	44	46	+10	0.99	1.22	0.94	1.21	1.27	+.28
Maryland	651	643	614	651	615	-36	1.19	1.17	1.08	1.15	1.08	-.11

Glossary

Alcohol-Related Crash

Any Reportable crash in which one or more of the drivers, pedestrians or pedalcyclists involved in the crash was reported to have been drinking.

Alcohol-Related Fatality

A person who died within 30 days as a result of a traffic crash involving alcohol.

Blood Alcohol Concentration (BAC)

The BAC is measured as a percentage by weight of alcohol in the blood (grams/deciliter). A positive BAC level (0.01 g/d and higher) indicates that alcohol was consumed by the person tested. A BAC level of .08 g/dl or more indicates that the person was intoxicated.

Body Type

Detailed type of motor vehicle within a vehicle type.

Bus

Large motor vehicles used to carry more than ten passengers, including school buses, inter-city buses, and transit buses.

Child Passenger Restraint System

A combination of an approved child safety seat and existing vehicle safety belt restraints.

Collision Diagram

A diagram which shows all the crashes in a intersection and the directions and types of crashes.

Construction Zone

The area between the first advance warning sign and the point beyond the work area where traffic is no longer affected.

Glossary

Crash

An occurrence that originates or terminates on a traffic way, which involves at least one motor vehicle in transport and results in injury or death to any person, or damage to any property.

Crash Rates

VMT - The number of crashes per 100 million vehicle miles traveled.

Population - The number of crashes per 100,000 population.

Licensed Drivers - The number of crashes per 100,000 licensed drivers.

Registered Vehicles - The number of crashes per 100,000 registered vehicles.

Crash Severity

1. Fatal Crash - A motor vehicle traffic crash in which one or more persons were killed.
2. Injury Crash - A motor vehicle traffic crash involving one or more persons who were physically harmed or who complained of physical harm but were not killed.
3. Property Damage Crash - A motor vehicle traffic crash involving property damage and no injury or death.

Crash Type

The category that best describes the general type of collision which was the first harmful event, that is, the first occurrence of injury or damage.

DUI

Driving Under the Influence.

DWI

Driving While Impaired

Ejection

Refers to occupants being totally or partially thrown from the vehicle as a result of an impact or rollover.

Glossary

Fatality

A person who dies as the result of a motor vehicle traffic crash. (For record keeping purposes, the death must occur within 30 days of the crash).

Fatality Rate

VMT - The number of persons killed per 100 million vehicle miles traveled.

Population - The number of persons killed per 100,000 population.

Licensed Drivers - The number of persons killed per 100,000 licensed drivers.

Registered Vehicles - The number of persons killed per 100,000 registered vehicles.

First Harmful Event

The first occurrence of injury or property damage in a motor vehicle crash.

Fixed Object

Stationary structures or substantial vegetation attached to the terrain.

Hazardous Material Spillage

A load spilled from a cargo carrying vehicle which is considered dangerous or involves risk.

Holidays

The holiday weekend begins at 6:00 PM of the last working day before the holiday and ends at midnight on the last day of the holiday. Pre-Holiday weekends and post-holiday weekends are time periods equivalent to that of the weekend before or the weekend after the holiday, respectively. The same applies to holidays during the middle of the work week where no weekend is involved.

Intersection

An area which contains a crossing or connection of two or more roadways not classified as driveway access and within the prolongation of the lateral curb lines. If no curb exists, it is the area within the extension of the lateral boundary lines of the roadway of two joined traffic ways.

Glossary

Intersection Related

A crash resulting from an activity, behavior or traffic control that affects a unit's movement in relation to an intersection, whether or not the point of origin or first harmful event occurred within the intersection.

Land Use

The crash location (urban or rural).

Most Harmful Event

The event during a crash for a particular vehicle that is judged to have produced the greatest personal injury or property damage.

Non-motorist

Any person who is not an occupant of a motor vehicle in transport and includes the following:

1. Pedestrians
2. Pedalcyclists
3. Occupants of parked motor vehicles
4. Others such as skateboard riders, people riding on animals, and persons riding in animal drawn conveyances.

Occupant

Any person who is in or upon a vehicle, including the driver, passenger, and persons riding on the outside of the vehicle.

Pedalcyclist

A person on a vehicle that is powered solely by pedals.

Pedestrian

Any person on foot, not in or upon a motor vehicle or other vehicle.

Passenger

Any occupant of a vehicle who is not the driver.

Glossary

Passenger Car

Motor vehicles used primarily for carrying passengers, including utility vehicles, sedans, convertibles and station wagons.

Reportable Crash

A crash resulting in a death within the 30 days of the crash, or injury, in any degree, to any person involved; or crashes resulting in damage to any vehicle serious enough to require towing.

Restraint Use

The occupant's use of available vehicle restraints including lap belt, shoulder belt, or automatic belt.

Roadway

That part of a traffic-way designed, improved, and ordinarily used for motor vehicle travel.

Seating Position

The location of the occupants in the vehicle. More than one can be assigned the same seat position.

Speed-Related Crash

Any reportable crash in which speed was listed as a contributing factor, whether or not the driver was noted as going over the posted speed limit.

Vehicle Miles of Travel (VMT)

A measure which indicates the number of miles traveled by vehicles on Maryland roadways.

Work Zone

The area between the first advance warning sign and the point beyond the work area where traffic is no longer affected (same as construction zone).

Glossary



Internet Websites

Maryland State Highway Administration - www.sha.state.md.us

US DOT NHTSA website - www.nhtsa.dot.gov

National Study Center for Trauma and EMS (CODES) – nsc.umaryland.edu

A

Age · 11, 13, 54, 55, 61, 62, 66, 67, 75, 76, 81, 82, 88, 89, 93, 94, 108
Injury rates · 55
Alcohol · 1, 14, 59, 74, 75, 76, 77, 78, 112, 113, 114, 115, 117
Alcohol-Related · 59, 117
Allegany County · 106, 116
Anne Arundel County · 106, 116

B

Baltimore City · 106, 116
Baltimore County · 106, 116

C

Calvert County · 106, 116
Caroline County · 106, 116
Carroll County · 106, 116
Cecil County · 106, 116
Charles County · 106, 116
Construction/Maintenance Zones · 60
Crash
 Gender · 10
Crash Severity · 6, 19, 75, 79, 80
Crash Type · 23, 24, 57, 59, 76, 118

D

Day of Week · 20, 21, 76
 Motorcycle injuries · 86
 Pedalcyclist injuries · 95
Dorchester County · 106, 116

E

Ejection
 Vehicle type · 70

F

Fatal Crashes
 Factors · 63
Fatalities
 by county · 116
Fatality Rates
 By county · 106
Fire · 37
Frederick County · 106, 116

G

Garrett County · 106, 116

H

Harford County · 106, 116
Helmet Use · 87
Howard County · 106, 116

I

Injury Rates · 7
 By age · 11
 Per registered vehicle · 11
Intersection · 88, 93, 119, 120

K

Kent County · 106, 116

L

Large Trucks · 8, 34, 73
Large Trucks
 Injury rates · 12
Light Condition · 22, 56
Light Truck · 9, 12, 33, 35, 36, 37, 64, 65, 66, 68, 69, 70, 71, 77, 78, 79, 80, 81, 82, 84, 85, 91, 96, 110
 Fatality and injury rates · 12
 Restraint use · 84
 Seating position · 84
Light Trucks
 Crash severity · 15
 Restraint use · 15
Location
 Pedalcyclist injuries · 93
 Pedestrian injuries · 88

M

Montgomery County · 106, 116
Month
 Crash rates · 19
Motorcycle · 9, 11, 12, 33, 37, 53, 63, 64, 66, 68, 69, 70, 71, 72, 74, 75, 76, 77, 78, 86, 91, 96, 107
 Fatality & injury rates · 12
 Helmet use · 87

Index

O

Occupant Fatalities
Vehicle type · 73

P

Passenger Car · 11, 33, 35, 36, 37, 64, 65, 66, 68, 69,
70, 71, 77, 78, 79, 80, 81, 82, 83, 85, 91, 96, 110,
121
Crash severity · 15
Fatality and injury rates · 11
Restraint use · 15, 83
Seating position · 83
Pedalcyclists · 93, 94, 95, 96, 97, 120
Pedestrians · 88, 89, 90, 91, 92, 111, 120
Prince Georges County · 106, 116
Property-Damage-Only · 20, 23, 24

Q

Queen Annes County · 106, 116

R

Restraint Use · 15, 79, 80, 81, 82, 83, 84, 85, 110, 121
Rollover · 35, 36
Rural
Fatalities · 58

S

School Bus · 34, 73, 87
Seating Position · 83, 84

Single-Vehicle Crashes · 38, 76, 91, 96
Somerset County · 106, 116
Speed Limit · 24, 25, 57, 58
St. Mary's County · 106, 116

T

Talbot County · 106, 116
Time of Day · 20, 21, 59, 76
Motorcycle injuries · 86
Pedalcyclist injuries · 95
Traffic Fatalities · 102
Two-Vehicle Crashes · 38, 71, 72

U

Urban
Fatalities · 58

V

Vehicle Miles Traveled · 7, 11, 12, 116
Vehicle Occupants · 11, 53, 64, 65, 66, 67, 68, 69, 70,
74
Vehicle Type · 8, 9, 33, 35, 36, 37, 64, 65, 66, 68, 69,
70, 71, 72, 77, 78, 79, 80, 85, 91, 96, 109
Fatal crashes · 34

W

Washington County · 106, 116
Weather Condition · 22, 56
Wicomico County · 106, 116
Worcester County · 106, 116