

**1997
OKLAHOMA
Traffic Crash Facts**

Oklahoma Highway Safety Office

1997 Edition

**Oklahoma Highway Safety Office
3223 N. Lincoln Blvd.
Okla. City, OK 73105-5403
Telephone (405) 521-3314
Fax (405) 524-4906**

July 1997

This publication printed by the Department of Public Safety is issued by the Oklahoma Highway Safety Office as authorized by 47 O.S. 1961, Sec. 10-116. Two thousand (2,000) copies have been prepared and distributed at a cost of _____. Copies have been deposited with the Publications Clearinghouse of the Oklahoma Department of Libraries.

Acknowledgments

Prepared by:

**Kathy Evans
Data Analyst
Oklahoma Highway Safety Office**

Special thanks to the following people for their invaluable assistance:

**Carol Williams
Program Manager
Oklahoma Highway Safety Office**

**Clint Robison
Administrative Assistant Technician
Oklahoma Highway Safety Office**

**Charles Mast, Data Manager
Application Support
Oklahoma Department of Public Safety**

**Jan Turney, Administrative Assistant
Accident Records
Oklahoma Department of Public Safety**

**Tom Baty, DP Application Specialist
Microcomputer Support
Oklahoma Department of Public Safety**

Table of Contents

Introduction	i
Oklahoma Background	ii
Population in Major Cities	ii
Most Severe Fatal Crashes in Oklahoma's History	iii
1997 Feature Facts	iv
1997 Time Lines	v

Persons

1997 Safety Equipment Statistics	1
Safety Belt Usage Among 1997 Traffic Fatality Victims	2
Safety Belt Usage Among Fatalities Age 0 - 5	2
Fatalities Age 0 - 12	
Safety Equipment Usage	3
Fatalities by Month and Age	3
Fatalities by Person Type	3
Traffic Deaths in Oklahoma by County 1992 - 1997	4
Injuries by County and Injury Severity	5
Fatalities by Highway Class	7
ABC Injuries by Highway Class	8
Alcohol Related Injury Severity by County	9
Non-Alcohol Related Injury Severity by County	10
1996 - 1997 Fatality Comparison by County	11
1996 - 1997 (ABC) Injury Comparison by County	12
Fatality Graphs:	
Fatalities by Month	13
Fatalities by Time of Day	13
Fatalities by Day of Week	13
Injury Graphs:	
ABC Injuries by Month	14
ABC Injuries by Time of Day	14
ABC Injuries by Day of Week	14
Fatalities by Date	15
Fatalities by Person Type	16
Age Distribution of Drivers Involved in Crashes	16
Age Distribution of Youthful Drivers Involved in Crashes	16
Holiday Traffic Fatalities	17
Holiday Traffic Fatalities 1980 - 1997	17
Drivers Involved in Crashes:	
Alcohol/Drug Related Driver Condition	
By Driver Sex and Cause of Crash	18
By County and Injury Severity	19
UnSafe Speed Crashes	20
By Sex and Injury Severity	21
By State of Residence	22
By Driver License State	22

Crashes

By County, Injury Severity, and Agency	23
By Alcohol Involvement	25
By Crash Injury Severity and Number of Vehicles	30
By Cause of Crash and Injury Severity	30
Contributing Causes of Statewide Crashes	
By Crash Injury Severity	26
Change from Previous Year	26
OHP Crashes	27
Municipal Crashes	2

Table of Contents

Graphs:	
Crashes by Month	28
Crashes by Day of Week	28
Crashes by Time of Day	29
Cellular Telephone Usage in Crashes:	
By Cause and Crash Injury Severity	31
By Cause of Crash	31

Motorcycle

Fatalities and Injuries	32
Fatalities:	
By Sex and Person Type	32
By Helmet Use	32
By Age and Sex	
Fatal Crashes:	
By Condition of Driver	32
Crashes:	
By Injury Severity	33
By Cause	33
Statewide Motorcycle Statistics (1972 - 1997)	34

School Bus

Persons Injured in Crashes Involving a School Bus	35
Fatalities in School Bus Crashes	36
Injuries Inside School Buses Involved in Crashes	37
Crashes Involving School Buses by Cause	38

Pedalcyclists

Injury Severity	39
Fatalities by Age and Sex	39
Injury Severity by Month	39
Graphs:	
Fatalities 1979 - 1997	40
Injuries 1979 - 1997	40

Pedestrians

Pedestrian Involvement by Age and Sex	41
Fatalities:	
By Age and Sex	41
Under Age 21 by Age and Sex	41
Injuries:	
By Age and Injury Severity	42
Under Age 21 by Age and Injury Severity	42
Pedestrian Condition and Pedestrian Action	43
Graphs:	
Fatalities 1979 - 1997	44
Injuries 1979 - 1997	44

Miscellaneous

Oklahoma Traffic Statistics	45
Oklahoma Highway Patrol Citations 1993 - 1997	46
Total Court convictions 1993 - 1997	46
State, County, and City Maintained Roads	47
Driver License by Class and Age Group	48

Introduction

- Purpose:** The purpose of this document is to provide Oklahoma crash, injury and fatality data.
- Reporting Year:** 1997 calendar year
- Crash Data:** The Accident Records Division of the Oklahoma Department of Public Safety maintains a database of crash records as reported by law enforcement agencies throughout Oklahoma. This database includes crashes resulting in injury, death, property damage over \$300. Crashes occurring on private or public property are included in this database. Data elements include information on vehicles, roadways, crash circumstances, drivers, passengers, pedestrians, motorcyclists, and bicyclists involved in these crashes.
- Exclusions:** The Department of Public Safety database is used with one exclusion: non-traffic crashes. Non-traffic crashes are those occurring on private property, deliberate acts, heart attacks, legal interventions, suicides, industrial crashes, drownings, boat crashes, incidents, and others. These crash records are kept in the DPS database but are not used for statistical purposes.
- KABCO Scale:** This scale is used for classifying injury severity. The letters in this scale indicate the following injury severities:
- K = Fatal injuries
 - A = Incapacitating injuries
 - B = Non-incapacitating injuries
 - C = Possible injuries
 - O = No injuries
- Every effort has been made to clearly document which injury severity classifications are included for each report.
- Persons:** It should also be noted that all drivers involved in a crash are entered into the database, whether injured or not. However, only injured non-drivers are entered into the database.
- Agency:** Reporting agencies include: Oklahoma Highway Patrol, city police, sheriff departments, game or park rangers, campus police, or other agencies.

For the purpose of this document:

- OHP = Oklahoma Highway Patrol
- Non-OHP = all reporting agencies except OHP
- Statewide = all reporting agencies

Oklahoma Background 1997

Population ¹	3,317,091
Square Miles ²	69,957
Registered Vehicles ³	3,422,510
Registered Motorcycles ³	51,581

Population in Major Cities ¹

Oklahoma City	469,852
Tulsa	378,491
Norman	90,228
Lawton	82,582
Broken Arrow	69,175
Edmond	63,475
Midwest City	54,252
Enid	45,724
Moore	44,472
Stillwater	38,487
Muskogee	37,891
Bartlesville	33,733

¹ U.S. Census Bureau, 1997 Estimates

² Oklahoma Department of Commerce

³ Oklahoma Tax Commission

Most Severe Fatal Crashes in Oklahoma's History 1994-1997

Saturday, May 10, was the deadliest day on Oklahoma roads in 1997. A total of 11 people were killed in that 24-hour period. Ten males and one female died in nine crashes. Six were drivers and five were passengers. Alcohol use was cited as a contributing factor in four of the crashes in which a total of four people were killed. Four people were killed in two crashes in which driver fatigue was cited. Eight of the fatality victims were not using seat belts; three of the victims were using seat belts. Four 4-fatality, six 3-fatality, and seventy-four 2-fatality crashes occurred on Oklahoma roadways in 1997.

July 12 was the deadliest day on Oklahoma roads in 1996. A total of 11 people were killed in that 24-hour period. Six males and five females died in six crashes. Four of the six crashes occurred on a wet roadway. Alcohol was not cited as a contributing cause in any of the crashes. Safety belts were in use by five of the victims; five were not wearing safety belts. Safety belt usage for one victim is unknown.

Twelve 3-fatality and four 4-fatality crashes occurred on Oklahoma roadways in 1996. Eleven persons under the age of twenty-one were killed in three of the 4-fatality crashes.

Canadian County - 1995 - January 3 - 9:25 p.m. - 4 killed

Northwest 206 Street near Piedmont
1 vehicle/4 pedestrians - Ran off roadway
1987 Mitsubishi pickup truck
Dry asphalt, darkness, clear, alcohol involved

Lincoln County - 1995 - August 14 - 8:15 a.m. - 5 killed

US Highway 177
2 vehicles - Head-on crash/driver fatigue
1994 Ford pickup truck 1991 Plymouth Acclaim
Dry asphalt, daylight, clear, no alcohol involvement

Okfuskee County - 1994 - July 30 - 7:05 p.m. - 5 killed

Interstate 40, MM 220
1 vehicle - Ran off roadway/driver fatigue
1990 Nissan Stanza
Dry asphalt, daylight, clear, no alcohol involvement

Pittsburg County - 1994 - July 31 - 10:35 a.m. - 5 killed

US Highway 270
2 vehicles - Head-on crash/left of center
1983 Ford LTD, 1997 Mercury Marquis
Dry asphalt, daylight, clear, alcohol involved

1997 Feature Facts

In 1997 there were 79,755 reported traffic crashes involving 139,462 drivers.

There were 52,929 persons killed or injured in 32,949 KABC crashes.

729 fatal (K) crashes claimed the lives of 846 persons.

Of the 846 fatalities: 548 were drivers, 220 were passengers, 70 were pedestrians, 5 were bicyclists and 3 were persons in a parked car.

542 (64%) of the number killed were males, 303 (36%) were females and 1 was unknown.

The 1997 mileage death rate of 2.4 deaths per 100 million vehicle miles is a 4% increase from 1996.

Oklahoma had 25.5 traffic deaths per 100,000 population.

56% of all drivers in crashes were male.

72% of all drivers in fatal crashes were male.

The number of fatalities increased 9.2% from 1996.

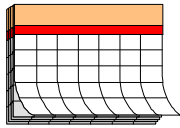
The number of fatal crashes increased 7.8% from 1996.



In 1997 the ratio of injured to killed was 61.6 to 1.

1997 Time Lines

DAILY TRAFFIC CRASH TOLL:



218 crashes occurred each day

143 persons were injured every day

176 (20.8%) of the 1997 fatalities occurred on Sunday

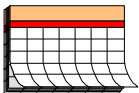


9 crashes occurred every hour

1 crash occurred every 6.6 minutes

1 fatality occurred every 10.4 hours

MORE CRASHES OCCURRED:



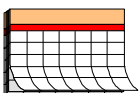
On Friday than any other day of the week

In October than any other month of the year



Between 5 p.m. and 6 p.m. than any other hour of the day

MORE FATALITIES OCCURRED



In May than any other month of the year

On Sunday than any other day of the week



Between 5 p.m. and 6 p.m. than any other hour of the day

1997 SAFETY EQUIPMENT STATISTICS

Safety Equipment Usage Among the 846 Fatality Victims:

87.2% (738 of 846) should have been using safety belts or child restraints

73.6% (543 of 738) were not using safety belts or child restraints

22.2% (164 of 738) were using safety belts or child restraint devices

4.2% (31 of 738) were cases in which safety belt usage was unknown

12.8% (108 of 846) were cases in which safety belt usage was not applicable. This category includes: motorcyclists, pedestrians, bicyclists, and victims in vehicles not equipped with safety belts.

Safety Equipment Usage Among the 52,929 Injured:

were using safety belts or child restraint devices

were not using safety belts or child restraints

not applicable

unknown

Safety Belt Usage					
Among 1997 Traffic Fatality Victims					
Month	Victims	YES	NO	N/A	UNKNOWN
Jan	49	11	29	6	3
Feb	58	13	37	5	3
Mar	62	12	42	7	1
Apr	62	10	44	7	1
May	91	16	64	7	4
Jun	79	15	46	17	1
Jul	73	16	48	7	2
Aug	88	11	60	11	6
Sep	73	15	43	11	4
Oct	77	16	46	13	2
Nov	62	19	35	6	2
Dec	72	10	49	11	2
TOTALS	846	164	543	108	31
		19.4%	64.2%	12.8%	3.7%

YES Safety Belts in Use
 NO Safety Belts Not In Use
 N/A Not Applicable (Includes Pedestrians, Motorcyclists, Bicyclists, and Victims in Vehicles Not Equipped With Safety Belts)
 UNKNOWN Information Unavailable/Undetermined

Safety Belt Usage Among Fatalities Age 0 - 5						
Safety Equipment	Age 1	Age 2	Age 3	Age 4	Age 5	Total
Not Applicable	1	0	0	0	1	2
Not in Use	5	3	0	2	2	12
Child Restraint	1	0	1	0	0	2
Seat Belt	0	0	1	1	0	2
Shoulder Belt	0	0	0	0	0	0
Seat & Shoulder Belt	0	1	0	0	0	1
Person Type	Age 1	Age 2	Age 3	Age 4	Age 5	Total
Bicyclist	0	0	0	0	1	1
Passenger	6	4	2	3	2	17
Pedestrian	1	0	0	0	0	1
Sex	Age 1	Age 2	Age 3	Age 4	Age 5	Total
Male	4	1	2	1	3	11
Female	3	3	0	2	0	8
Total Fatalities	7	4	2	3	3	19

SAFETY EQUIPMENT USAGE AMONG 1997 TRAFFIC FATALITIES AGES 0 - 12

Month	Age	Sex	Person Type	Safety Equip
Jan	6	F	Bicyclist	Not Applicable
Feb	4	F	Passenger	Not in Use
Mar	1	F	Pedestrian	Not Applicable
	7	M	Passenger	Not in Use
	1	F	Passenger	Not in Use
	12	F	Passenger	Not in Use
	2	F	Passenger	Not in Use
	4	F	Passenger	Not in Use
	6	M	Passenger	Not in Use
Apr	1	F	Passenger	Child Restraint
	5	M	Passenger	Not in Use
	4	M	Passenger	Seat Belt
	2	M	Passenger	Not in Use
	12	M	Pedestrian	Not Applicable
May	12	M	Driver	Not in Use
	10	M	Passenger	Seat & Shoulder Belt
	1	M	Passenger	Not in Use
Jun	7	F	Passenger	Not in Use
	1	M	Passenger	Not in Use
Jul	5	M	Passenger	Not in Use
	1	M	Passenger	Not in Use
	1	M	Passenger	Not in Use
Aug	3	M	Passenger	Seat Belt
	2	F	Passenger	Not in Use
	5	M	Bicyclist	Not Applicable
	3	M	Passenger	Child Restraint
	8	F	Passenger	Not in Use
Sep	9	M	Passenger	Not in Use
Oct	9	F	Passenger	Shoulder Belt
	2	F	Passenger	Seat & Shoulder Belt
	8	M	Passenger	Not in Use
	10	F	Passenger	Not in Use
Nov	12	M	Pedestrian	Not Applicable
Dec	8	F	Passenger	Seat Belt
	11	M	Pedestrian	Not Applicable
	6	M	Passenger	Not in Use
Total	36			

Fatalities by Month		Fatalities by Age	
Month	Fatalities	Age	Fatalities
Jan	1	1	7
Feb	1	2	4
Mar	7	3	2
Apr	5	4	3
May	3	5	3
Jun	2	6	3
Jul	3	7	2
Aug	5	8	3
Sep	1	9	2
Oct	5	10	2
Nov	0	11	1
Dec	3	12	4
Total	36	Total	36

Fatalities by Safety Equip Ages 0 - 12	
Safety Equip	Fatalities
Not Applicable	6
Not in Use	22
Child Restraint	2
Seat Belt	3
Shoulder Belt	1
Seat & Shoulder Belt	2
Total	36

Fatalities by Person Type Ages 0 - 12	
Type	Fatalities
Bicyclist	2
Passenger	29
Pedestrian	4
Driver	1
Total	36

*Age 1 indicates ages 0 - 1

TRAFFIC DEATHS IN OKLAHOMA BY COUNTY 1992 - 1997

County	1992	1993	1994	1995	1996	1997	County	1992	1993	1994	1995	1996	1997
Adair	11	10	4	5	4	5	Leflore	11	12	12	6	19	11
Alfalfa	2	3	5	2	1	0	Lincoln	6	11	9	12	7	19
Atoka	6	8	2	8	10	6	Logan	8	2	6	21	10	5
Beaver	1	1	3	1	2	4	Love	5	2	7	3	10	2
Beckham	7	8	9	6	6	11	McClain	3	5	5	9	14	21
Blaine	3	4	4	7	1	3	McCurtain	13	16	14	9	22	17
Bryan	6	10	8	4	6	13	McIntosh	8	12	8	6	14	12
Caddo	10	13	17	14	20	26	Major	1	1	5	6	5	2
Canadian	17	14	11	13	13	15	Marshall	2	4	3	1	6	5
Carter	4	13	11	10	8	9	Mayes	9	7	11	12	15	15
Cherokee	15	12	9	16	4	14	Murray	4	3	2	2	4	2
Choctaw	4	6	5	8	2	4	Muskogee	13	15	13	9	19	21
Cimarron	2	2	3	2	2	6	Noble	2	8	7	6	6	3
Cleveland	20	19	25	25	32	26	Nowata	3	2	3	6	1	9
Coal	1	4	4	0	3	2	Okfuskee	4	4	10	4	4	3
Comanche	17	10	13	17	15	15	Oklahoma	70	69	79	74	102	100
Cotton	1	2	5	8	3	1	Okmulgee	6	12	8	10	8	10
Craig	10	8	8	4	3	9	Osage	6	12	10	16	14	12
Creek	17	20	21	23	14	20	Ottawa	10	12	7	10	15	16
Custer	4	5	4	5	8	8	Pawnee	3	1	7	6	6	8
Delaware	7	7	15	8	12	14	Payne	16	10	9	14	13	12
Dewey	2	4	4	0	3	2	Pittsburg	7	16	15	14	19	17
Ellis	4	1	2	2	2	2	Pontotoc	10	14	14	8	17	10
Garfield	10	12	13	7	13	12	Pottawatomie	15	14	13	12	14	12
Garvin	14	16	13	7	10	17	Pushmataha	5	3	2	3	8	4
Grady	7	12	15	14	15	22	Roger Mills	3	3	0	1	0	0
Grant	0	0	2	2	0	3	Rogers	16	9	15	17	19	19
Greer	1	1	0	1	1	0	Seminole	6	9	5	3	10	12
Harmon	1	0	0	1	2	3	Sequoyah	3	7	11	13	9	17
Harper	1	3	1	0	2	1	Stephens	5	8	9	11	5	9
Haskell	2	3	1	3	1	4	Texas	10	12	7	7	8	16
Hughes	5	2	4	3	4	8	Tillman	1	3	3	1	3	1
Jackson	2	3	1	2	6	2	Tulsa	60	42	66	61	57	76
Jefferson	5	2	3	2	1	2	Wagoner	10	16	17	10	20	10
Johnston	3	8	5	2	5	7	Washington	5	3	7	5	4	4
Kay	16	15	9	12	11	15	Washita	3	6	6	9	4	4
Kingfisher	4	9	2	3	7	3	Woods	2	3	1	2	2	4
Kiowa	2	9	1	2	3	4	Woodward	4	3	1	3	5	4
Latimer	7	2	6	3	2	4	TOTAL	619	672	695	674	775	846

1997 Injuries by County and Injury Severity											
COUNTY	(K) Fatal Injuries		(A) Incapacitating Injuries		(B) Non-Incapacitating Injuries		(C) Possible Injuries		(KABC) Total Injuries		
	OHP	NON-OHP	OHP	NON-OHP	OHP	NON-OHP	OHP	NON-OHP	OHP	NON-OHP	TOTAL
ADAIR	5		27		85	13	86	37	203	50	253
ALFALFA			4		16	1	15	1	35	2	37
ATOKA	6		19	3	73	10	25	7	123	20	143
BEAVER	4		19	1	59	2	27	7	109	10	119
BECKHAM	11		26	12	94	42	47	68	178	122	300
BLAINE	3		14	2	37	4	33	21	87	27	114
BRYAN	10	3	34	20	80	72	165	132	289	227	516
CADDO	21	5	56	3	92	21	85	40	254	69	323
CANADIAN	8	7	32	36	85	191	110	234	235	468	703
CARTER	4	5	34	15	82	134	99	238	219	392	611
CHEROKEE	12	2	71	16	108	49	231	114	422	181	603
CHOCTAW	4		27	2	82	10	72	39	185	51	236
CIMARRON	6		5		12	2	5	5	28	7	35
CLEVELAND	11	15	62	204	102	676	176	1266	351	2,161	2512
COAL	2		7	2	35		11	6	55	8	63
COMANCHE	11	4	47	39	151	372	118	707	327	1122	1449
COTTON	1		3	1	29	6	20	8	53	15	68
CRAIG	7	2	13	3	84	22	70	34	174	61	235
CREEK	15	5	61	29	153	102	174	202	403	338	741
CUSTER	8		27	12	70	46	106	114	211	172	383
DELAWARE	12	2	31	7	125	26	177	111	345	146	491
DEWEY	2		4	1	26	5	18	1	50	7	57
ELLIS	2		9		15		6	2	32	2	34
GARFIELD	5	7	10	52	85	202	63	513	163	774	937
GARVIN	14	3	63	7	89	20	142	75	308	105	413
GRADY	19	3	37	22	157	78	124	143	337	246	583
GRANT	3		9		22		13	1	47	1	48
GREER			4		14	3	17	6	35	9	44
HARMON	3		3	1	7	3	5	7	18	11	29
HARPER	1		9	1	12	5	11	4	33	10	43
HASKELL	4		18		25		32	3	79	3	82
HUGHES	8		13		30	2	21	3	72	5	77
JACKSON	2		10	12	30	64	36	167	78	243	321
JEFFERSON	2		8	1	20	1	11	7	41	9	50
JOHNSTON	7		26	4	65	6	51	28	149	38	187
KAY	15		37	8	174	110	73	283	299	401	700
KINGFISHER	3		12	1	53	7	40	47	108	55	163
KIOWA	4		9	1	56	3	6	12	75	16	91
LATIMER	4		19	1	38	11	55	15	116	27	143
LEFLORE	11		37	13	74	43	202	139	324	195	519
LINCOLN	18	1	54	1	103	19	115	51	290	72	362

1997 Injuries by County and Injury Severity											
COUNTY	(K) Fatal Injuries		(A) Incapacitating Injuries		(B) Non-Incapacitating Injuries		(C) Possible Injuries		(KABC) Total Injuries		
	OHP	NON-OHP	OHP	NON-OHP	OHP	NON-OHP	OHP	NON-OHP	OHP	NON-OHP	TOTAL
LOGAN	5		30	9	114	54	104	90	253	153	406
LOVE	2		32		45	3	46	4	125	7	132
MAJOR	2		9		51	1	21	2	83	3	86
MARSHALL	5		28		93	3	27	27	153	30	183
MAYES	14	1	55	7	173	31	118	116	360	155	515
MCCLAIN	15	6	61	11	112	58	136	137	324	212	536
MCCURTAIN	17		65	15	120	34	163	136	365	185	550
MCINTOSH	8	4	32	3	29	11	50	45	119	63	182
MURRAY	2		21	2	26	18	57	50	106	70	176
MUSKOGEE	20	1	92	37	40	217	237	697	389	952	1341
NOBLE	3		17	2	65	9	37	3	122	14	136
NOWATA	9		6		37	8	50	19	102	27	129
OKFUSKEE	3		25	3	37	1	48	20	113	24	137
OKLAHOMA	37	63	167	718	641	3488	1387	7295	2232	11564	13796
OKMULGEE	7	3	20	13	83	81	139	144	249	241	490
OSAGE	12		40	5	130	29	112	57	294	91	385
OTTAWA	15	1	37	13	173	58	112	78	337	150	487
PAWNEE	8		18	3	56	6	51	9	133	18	151
PAYNE	8	4	38	30	152	211	101	339	299	584	883
PITTSBURG	15	2	63	19	206	44	102	161	386	226	612
PONTOTOC	9	1	28	33	90	77	115	82	242	193	435
POTTAWATOMIE	10	2	52	54	155	217	163	328	380	601	981
PUSHMATAHA	4		18	7	48	11	57	9	127	27	154
ROGER MILLS			11		15	1	10		36	1	37
ROGERS	15	4	76	22	261	83	275	156	627	265	892
SEMINOLE	12		46	10	52	21	109	56	219	87	306
SEQUOYAH	17		45	5	59	9	133	58	254	72	326
STEPHENS	6	3	35	32	95	144	53	204	189	383	572
TEXAS	14	2	30	2	62	19	66	78	172	101	273
TILLMAN	1		3	3	15	13	7	33	26	49	75
TULSA	29	47	189	743	550	3140	711	5614	1479	9544	11023
WAGONER	9	1	72	9	125	67	151	152	357	229	586
WASHINGTON	3	1	20	37	37	183	76	310	136	531	667
WASHITA	4		15		41	2	53		113	2	115
WOODS	4		2	2	15	13	15	20	36	35	71
WOODWARD	4		16	12	50	52	50	101	120	165	285
Total	636	210	2524	2394	6802	10800	8035	21528	17997	34932	52929

1997 FATALITIES BY HIGHWAY CLASS

County	U.S. Hwy.	Interstate	Turnpike	State Hwy.	County Rd.	City St.	U.S. Hwy. & City St.	State Hwy. & City St.	Total
ADAIR	3				2				5
ALFALFA									
ATOKA	2			2	2				6
BEAVER	2				2				4
BECKHAM		9		2					11
BLAINE	1			2					3
BRYAN	6			3	2	2			13
CADDO	3	3	2	6	9	1	2		26
CANADIAN	1	5		2	1	6			15
CARTER	1	1		2	1	4			9
CHEROKEE				6	6	2			14
CHOCTAW	2				2				4
CIMARRON	4				2				6
CLEVELAND		7		1	2	16			26
COAL				2					2
COMANCHE	4	2		1	5	3			15
COTTON			1						1
CRAIG			3	1	3	1	1		9
CREEK	2		6	10	2				20
CUSTER		5			3				8
DELAWARE	3		2	5	3	1			14
DEWEY	2								2
ELLIS				1	1				2
GARFIELD	2			1	3	6			12
GARVIN	1	1		6	6	1		2	17
GRADY	2		4	6	7	3			22
GRANT	1				2				3
HARMON				3					3
HARPER	1								1
HASKELL				2	2				4
HUGHES	2			6					8
JACKSON				1	1				2
JEFFERSON				1	1				2
JOHNSTON	2			4	1				7
KAY	3	2		3	7				15
KINGFISHER				3					3
KIOWA	3			1					4
LATIMER				2	2				4

County	U.S. Hwy.	Interstate	Turnpike	State Hwy.	County Rd.	City St.	U.S. Hwy. & City St.	State Hwy. & City St.	Total
LEFLORE	5			1	3	2			11
LINCOLN	8		1	3	7				19
LOGAN		4			1				5
LOVE	1	1							2
MAJOR					2				2
MARSHALL	2			1	2				5
MAYES	3		2	5	4	1			15
MCCLAIN	2	4	2	9	1	3			21
MCCURTAIN	7			4	6				17
MCINTOSH	3	3	1		1	4			12
MURRAY		1	1						2
MUSKOGEE	9		2	3	6	1			21
NOBLE	1		2						3
NOWATA	7				2				9
OKFUSKEE		1			2				3
OKLAHOMA		23		1	4	72			100
OKMULGEE	3	2		1	1	2		1	10
OSAGE	2			7	3				12
OTTAWA	5		3	3	4	1			16
PAWNEE	4		3	1					8
PAYNE	2		2	4	1	3			12
PITTSBURG	5		2	1	7	1	1		17
PONTOTOC				5	4	1			10
POTTAWATOMIE	2			5	3	2			12
PUSHMATAHA	2			2					4
ROGERS	3		1	3	11	1			19
SEMINOLE	3	3		4	2				12
SEQUOYAH	2	6		2	7				17
STEPHENS				1	5	3			9
TEXAS	3				11	2			16
TILLMAN					1				1
TULSA	5	6	1	6	12	43	2	1	76
WAGONER	3		1	1	4	1			10
WASHINGTON	2				1	1			4
WASHITA	1			2	1				4
WOODS	3				1				4
WOODWARD	4								4
Total	155	89	42	160	200	190	6	4	846

1997 ABC INJURIES BY HIGHWAY CLASS

County	U.S. Hwy.	Interstate	Turnpike	State Hwy.	County Rd.	City St.	U.S. Hwy. & City St.	State Hwy. & City St.	Total
ADAIR	78			35	85	12	28	10	248
ALFALFA	6			17	12	1	1		37
ATOKA	40			35	40	5	16	1	137
BEAVER	44			14	46	8	3		115
BECKHAM	7	89		36	41	65	4	47	289
BLAINE	28			24	32	23		4	111
BRYAN	142			60	76	102	113	10	503
CADDO	44	31	3	77	81	33	11	17	297
CANADIAN	57	118		16	32	391	6	68	688
CARTER	37	58		57	74	354	8	14	602
CHEROKEE	68			189	155	140	33	4	589
CHOCTAW	86	1		8	80	51	6		232
CIMARRON	17			1	4	5	1	1	29
CLEVELAND	15	226	1	43	78	1952	56	115	2486
COAL	12			20	20	4	5		61
COMANCHE	55	38	28	87	130	1073	14	9	1434
COTTON	9	10	14	12	7	11		4	67
CRAIG	44		21	45	57	30	21	8	226
CREEK	12		112	135	135	244	2	81	721
CUSTER	9	93		40	72	100	6	55	375
DELAWARE	109		7	124	98	46	70	23	477
DEWEY	22			10	15	2	6		55
ELLIS	11			9	10	2			32
GARFIELD	28			30	100	601	162	4	925
GARVIN	47	47		99	105	53	11	34	396
GRADY	66	3	56	56	142	116	76	46	561
GRANT	17			17	11				45
GREER	12			8	15	9			44
HARMON	4			5	7	10			26
HARPER	18			2	12	4	6		42
HASKELL				56	20			2	78
HUGHES	22			24	19		3	1	69
JACKSON	32			9	33	155	90		319
JEFFERSON	11			13	15	8	1		48
JOHNSTON	25			60	54	25	5	11	180
KAY	65	28		52	134	285	112	9	685
KINGFISHER	14			22	70	16	37	1	160
KIOWA	11			26	33	13	2	2	87
LATIMER	26			54	34	12	6	7	139

	U.S. Hwy.	Interstate	Turnpike	State Hwy.	County Rd.	City St.	U.S. Hwy. & City St.	State Hwy. & City St.	Total
LEFLORE	127			90	99	141	27	24	508
LINCOLN	64		58	77	75	47	3	19	343
LOGAN	10	62		87	86	128	11	17	401
LOVE	13	64		16	31	1		5	130
MAJOR	31			16	33	4			84
MARSHALL	65			39	45	11	17	1	178
MAYES	80		24	93	155	77	50	21	500
MCCLAIN	9	142	13	90	60	50	65	86	515
MCCURTAIN	122			55	167	96	89	4	533
MCINTOSH	17	22	14	23	35	43	2	14	170
MURRAY	25	18	5	28	28	12	7	51	174
MUSKOGEE	111	15	8	77	155	858	77	19	1320
NOBLE	38	38	7	9	25	6	10		133
NOWATA	38			17	38	21	6		120
OKFUSKEE	23	26		39	21	19		6	134
OKLAHOMA	24	1917	68	13	94	11478	16	86	13696
OKMULGEE	132	22	6	30	52	154	81	3	480
OSAGE	47			101	134	71	3	17	373
OTTAWA	77	1	64	83	99	71	46	30	471
PAWNEE	63		24	14	22	18	1	1	143
PAYNE	33	30	12	121	96	375	93	111	871
PITTSBURG	155		19	93	96	135	91	6	595
PONTOTOC	30		2	104	96	130	34	29	425
POTTAWATOMIE	87	55		113	107	525	37	45	969
PUSHMATAHA	33		6	51	34	6	11	9	150
ROGER MILLS	8			11	14	4			37
ROGERS	79	35	38	226	240	84	8	163	873
SEMINOLE	58	24		75	52	61	17	7	294
SEQUOYAH	74	27		37	99	70	2		309
STEPHENS	2			50	130	168	185	28	563
TEXAS	78			14	65	63	34	3	257
TILLMAN	7			14	8	15	17	13	74
TULSA	212	674	10	107	466	8703	584	191	10947
WAGONER	40	1	50	74	180	134	13	84	576
WASHINGTON	65			19	53	430	91	5	663
WASHITA	12	18		23	56			2	111
WOODS	9			3	20	33	2		67
WOODWARD	49			26	46	139	21		281
Total	3497	3933	670	3785	5496	30342	2672	1685	52083

1997 ALCOHOL RELATED INJURY SEVERITY BY COUNTY

County	K Fatal	A Incapacitating Injury	B Non-Incapacitating	C Possible Injury	O No Injury	Unknown	Total
ADAIR	1	13	23	24	36	1	98
ALFALFA		1					1
ATOKA	3	2	4	3	17	1	30
BEAVER		5	6	1	8	5	25
BECKHAM	5	4	17	1	25	3	55
BLAINE	2	3	9	3	12	3	32
BRYAN	3	13	29	34	57	6	142
CADDO	3	16	26	23	51	8	127
CANADIAN	1	11	31	22	53	6	124
CARTER	2	18	41	25	75	15	176
CHEROKEE	2	21	18	30	41	4	116
CHOCTAW	2	10	16	8	12	2	50
CIMARRON	2				4		6
CLEVELAND	8	31	76	74	211	26	426
COAL		1	12	1	4		18
COMANCHE	7	21	73	75	192	29	397
COTTON			5	2	8		15
CRAIG	1	3	9	2	12		27
CREEK	4	17	35	27	57	12	152
CUSTER	2	4	16	13	25	3	63
DELAWARE	1	5	29	31	36	3	105
DEWEY			4	2	5	5	16
ELLIS	2	4	3	1	4	1	15
GARFIELD	3	5	41	18	66	23	156
GARVIN	7	13	13	11	25	4	73
GRADY	4	13	20	19	30	4	90
GRANT		2	4		1		7
GREER		1		2	2		5
HARMON			1		1	1	3
HARPER			2	2	10	2	16
HASKELL	2	3	6	6	2	1	20
HUGHES	1	2	1	4	11	1	20
JACKSON	1	1	4	4	22	3	35
JEFFERSON		2			4	2	8
JOHNSTON	2	8	10	8	20		48
KAY	7	19	53	17	67	9	172
KINGFISHER	1	3	5	5	7	2	23
KIOWA		1	9		15		25
LATIMER		2	12	10	8	1	33

County	K Fatal	A Incapacitating Injury	B Non-Incapacitating	C Possible Injury	O No Injury	Unknown	Total
LEFLORE	4	4	23	23	45	1	100
LINCOLN	2	8	25	8	16	4	63
LOGAN	1	8	16	14	27	3	69
LOVE		4	8	8	8		28
MAJOR	2	4	7	2	9	1	25
MARSHALL	2	14	4	2	11	1	34
MAYES	8	14	32	28	41	3	126
MCCLAIN	5	11	14	18	28	2	78
MCCURTAIN	2	28	35	36	64	10	175
MCINTOSH	4	7		13	23	4	51
MURRAY		2	9	11	14	1	37
MUSKOGEE	5	11	23	59	78	6	182
NOBLE		4	6		6		16
NOWATA	2	2	8	5	5	1	23
OKFUSKEE		5	5	6	16	1	33
OKLAHOMA	21	126	405	440	938	152	2082
OKMULGEE	1	6	21	28	52	3	111
OSAGE	2	12	24	35	42	4	119
OTTAWA	2	15	28	10	41	6	102
PAWNEE	1	7	5	9	12	3	37
PAYNE	3	5	39	34	64	15	160
PITTSBURG	4	17	50	23	45	1	140
PONTOTOC		9	26	8	22	4	69
POTTAWATOMIE	4	12	32	28	62	9	147
PUSHMATAHA	1	3	3	6	5	1	19
ROGER MILLS		2	2	1	2		7
ROGERS	2	19	45	22	58	3	149
SEMINOLE	2	12	11	9	29	3	66
SEQUOYAH	4	11	15	16	48	3	97
STEPHENS		6	20	14	38	4	82
TEXAS	7	11	13	9	20	2	62
TILLMAN	1		1		4	1	7
TULSA	20	130	320	310	778	115	1673
WAGONER	5	24	36	30	55	9	159
WASHINGTON	1	9	14	22	51	11	108
WASHITA		2	8	5	6		21
WOODS	1	1	1	1			4
WOODWARD	2	3	5	5	16	2	33
Total	200	846	2002	1806	4015	575	9444

Counties with Liquor by the drink are shaded.

1997 Non-Alcohol Related Injury Severity by County

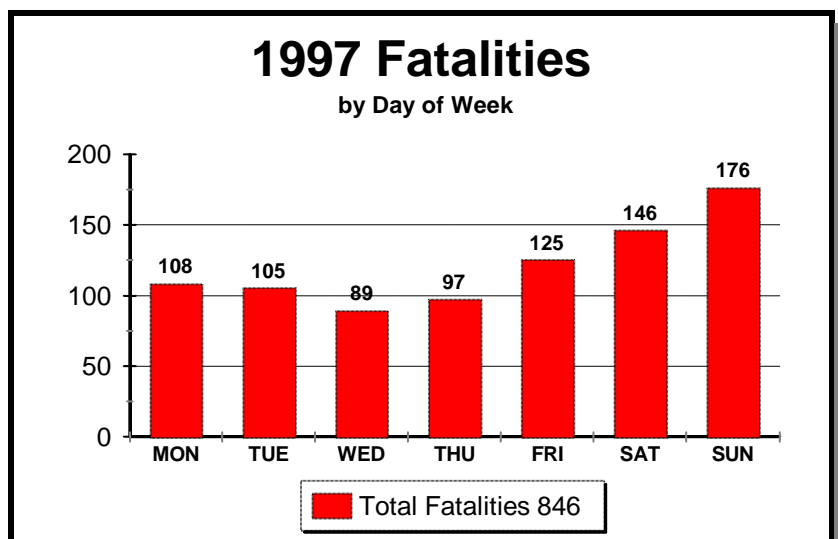
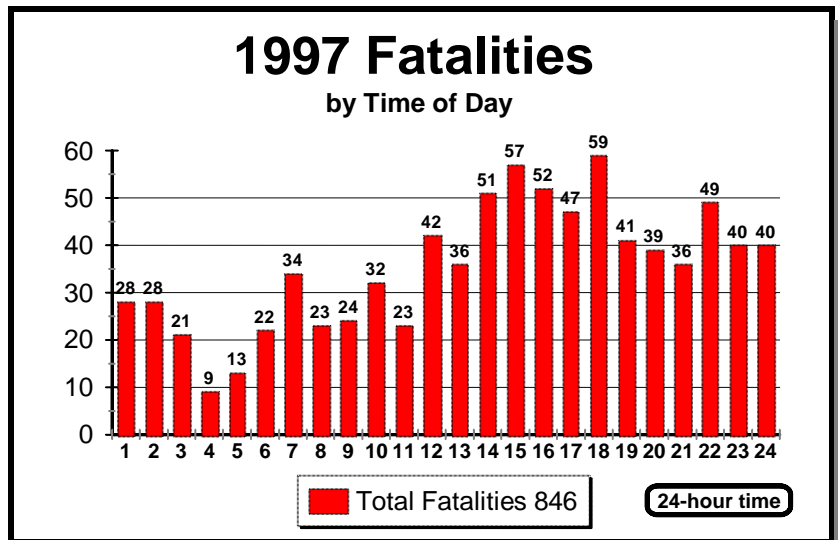
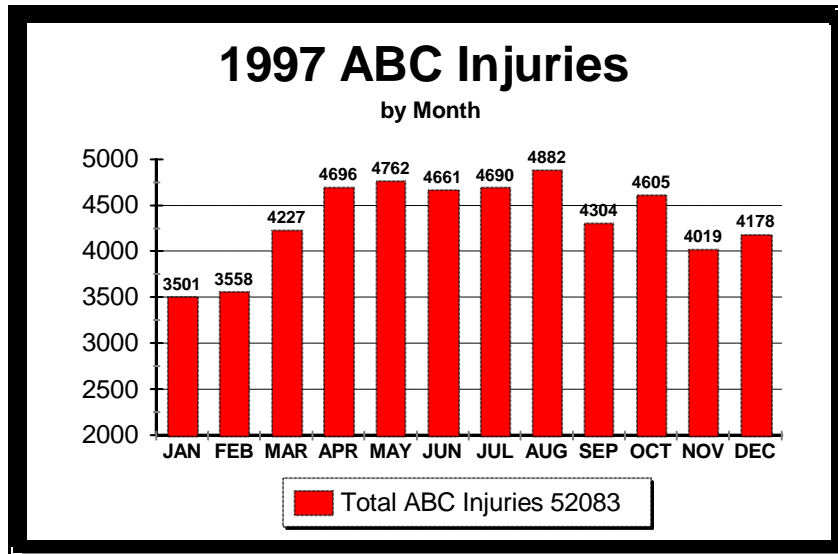
County	K Fatal	A Incapacitating Injury	B Non-Incapacitating Injury	C Possible Injury	O No Injury	Unknown Injury	Total	County	K Fatal	A Incapacitating Injury	B Non-Incapacitating Injury	C Possible Injury	O No Injury	Unknown Injury	Total
ADAIR	4	14	75	99	276	47	515	LATIMER	4	18	37	60	209	26	354
ALFALFA		3	17	16	100	51	187	LEFLORE	7	46	94	318	820	109	1394
ATOKA	3	20	79	29	165	19	315	LINCOLN	17	47	97	158	531	68	918
BEAVER	4	15	55	33	192	48	347	LOGAN	4	31	152	180	560	69	996
BECKHAM	6	34	119	114	543	77	893	LOVE	2	28	40	42	130	30	272
BLAINE	1	13	32	51	204	61	362	MAJOR		5	45	21	95	26	192
BRYAN	10	41	123	263	1082	110	1629	MARSHALL	3	14	92	52	221	30	412
CADDO	23	43	87	102	498	71	824	MAYES	7	48	172	206	681	80	1194
CANADIAN	14	57	245	322	1483	183	2304	MCCLAIN	16	61	156	255	703	102	1293
CARTER	7	31	175	312	1551	202	2278	MCCURTAIN	15	52	119	263	954	155	1558
CHEROKEE	12	66	139	315	1084	78	1694	MCINTOSH	8	28	40	82	341	46	545
CHOCTAW	2	19	76	103	264	31	495	MURRAY	2	21	35	96	355	30	539
CIMARRON	4	5	14	10	95	14	142	MUSKOGEE	16	118	234	875	2151	282	3676
CLEVELAND	18	235	702	1368	5808	635	8766	NOBLE	3	15	68	40	206	26	358
COAL	2	8	23	16	73	23	145	NOWATA	7	4	37	64	205	28	345
COMANCHE	8	65	450	750	3630	515	5418	OKFUSKEE	3	23	33	62	133	36	290
COTTON	1	4	30	26	97	46	204	OKLAHOMA	79	759	3724	8242	28121	3622	44547
CRAIG	8	13	97	102	413	58	691	OKMULGEE	9	27	143	255	784	117	1335
CREEK	16	73	220	349	1322	147	2127	OSAGE	10	33	135	134	430	78	820
CUSTER	6	35	100	207	821	117	1286	OTTAWA	14	35	203	180	878	114	1424
DELAWARE	13	33	122	257	645	83	1153	PAWNEE	7	14	57	51	232	41	402
DEWEY	2	5	27	17	71	18	140	PAYNE	9	63	324	406	1991	169	2962
ELLIS		5	12	7	37	11	72	PITTSBURG	13	65	200	240	986	62	1566
GARFIELD	9	57	246	558	2587	595	4052	PONTOTOC	10	52	141	189	623	71	1086
GARVIN	10	57	96	206	705	109	1183	POTTAWATOMIE	8	94	340	463	1675	155	2735
GRADY	18	46	215	248	1000	132	1659	PUSHMATAHA	3	22	56	60	207	34	382
GRANT	3	7	18	14	68	29	139	ROGER MILLS		9	14	9	43	12	87
GREER		3	17	21	68	20	129	ROGERS	17	79	299	409	1573	118	2495
HARMON	3	4	9	12	52	13	93	SEMINOLE	10	44	62	156	477	50	799
HARPER	1	10	15	13	76	31	146	SEQUOYAH	13	39	53	175	620	49	949
HASKELL	2	15	19	29	115	18	198	STEPHENS	9	61	219	243	1122	121	1775
HUGHES	7	11	31	20	86	16	171	TEXAS	9	21	68	135	576	73	882
JACKSON	1	21	90	199	843	95	1249	TILLMAN		6	27	40	164	40	277
JEFFERSON	2	7	21	18	86	13	147	TULSA	56	802	3370	6015	20293	2772	33308
JOHNSTON	5	22	61	71	243	53	455	WAGONER	5	57	156	273	911	97	1499
KAY	8	26	231	339	1349	199	2152	WASHINGTON	3	48	206	364	1638	180	2439
KINGFISHER	2	10	55	82	311	54	514	WASHITA	4	13	35	48	156	40	296
KIOWA	4	9	50	18	174	37	292	WOODS	3	3	27	34	186	54	307
								WOODWARD	2	25	97	146	603	49	922
								Total	646	4072	15600	27757	100801	13320	162196

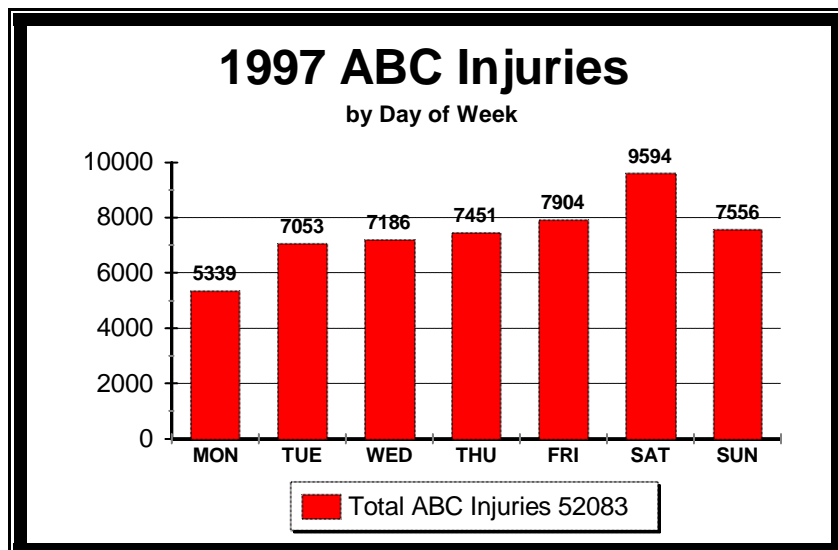
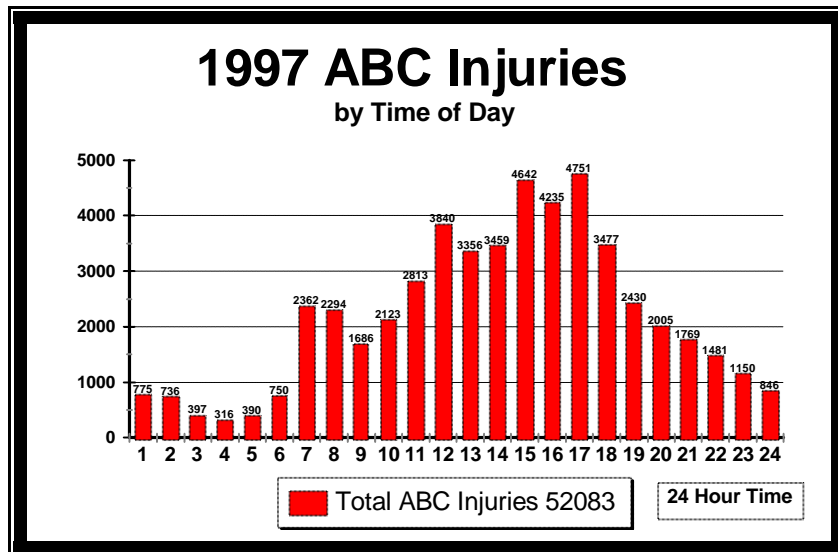
Counties with liquor by the drink are shaded.

1996 - 1997 FATALITY COMPARISON

County	1996	1997	% +/-	County	1996	1997	% +/-
Adair	4	5	25%	Leflore	19	11	-42%
Alfalfa	1	0	-100%	Lincoln	7	19	171%
Atoka	10	6	-40%	Logan	10	5	-50%
Beaver	2	4	100%	Love	10	2	-80%
Beckham	6	11	83%	McClain	14	2	-86%
Blaine	1	3	200%	McCurtain	22	5	-77%
Bryan	6	13	117%	McIntosh	14	15	7%
Caddo	20	26	30%	Major	5	21	320%
Canadian	13	15	15%	Marshall	6	17	183%
Carter	8	9	13%	Mayes	15	12	-20%
Cherokee	4	14	250%	Murray	4	2	-50%
Choctaw	2	4	100%	Muskogee	19	21	11%
Cimarron	2	6	200%	Noble	6	3	-50%
Cleveland	32	26	-19%	Nowata	1	9	800%
Coal	3	2	-33%	Okfuskee	4	3	-25%
Comanche	15	15	0%	Oklahoma	102	100	-2%
Cotton	3	1	-67%	Okmulgee	8	10	25%
Craig	3	9	200%	Osage	14	12	-14%
Creek	14	20	43%	Ottawa	15	16	7%
Custer	8	8	0%	Pawnee	6	8	33%
Delaware	12	14	17%	Payne	13	12	-8%
Dewey	3	2	-33%	Pittsburg	19	17	-11%
Ellis	2	2	0%	Pontotoc	17	10	-41%
Garfield	13	12	-8%	Pottawatomie	14	12	-14%
Garvin	10	17	70%	Pushmataha	8	4	-50%
Grady	15	22	47%	Roger Mills	0	0	0%
Grant	0	3	300%	Rogers	19	19	0%
Greer	1	0	-100%	Seminole	10	12	20%
Harmon	2	3	50%	Sequoyah	9	17	89%
Harper	2	1	-50%	Stephens	5	9	80%
Haskell	1	4	300%	Texas	8	16	100%
Hughes	4	8	100%	Tillman	3	1	-67%
Jackson	6	2	-67%	Tulsa	57	76	33%
Jefferson	1	2	100%	Wagoner	20	10	-50%
Johnston	5	7	40%	Washington	4	4	0%
Kay	11	15	36%	Washita	4	4	0%
Kingfisher	7	3	-57%	Woods	2	4	100%
Kiowa	3	4	33%	Woodward	5	4	-20%
Latimer	2	4	100%	TOTAL	775	846	9.2%

1996 - 1997 (ABC) INJURY COMPARISON							
County	1996	1997	% +/-	County	1996	1997	% +/-
Adair	190	248	31%	Leflore	500	508	2%
Alfalfa	49	37	-24%	Lincoln	364	343	-6%
Atoka	211	137	-35%	Logan	378	401	6%
Beaver	112	115	3%	Love	101	130	29%
Beckham	269	289	7%	McClain	530	84	-84%
Blaine	110	111	1%	McCurtain	537	178	-67%
Bryan	541	503	-7%	McIntosh	188	500	166%
Caddo	323	297	-8%	Major	94	515	448%
Canadian	868	688	-21%	Marshall	151	533	253%
Carter	683	602	-12%	Mayes	450	170	-62%
Cherokee	379	589	55%	Murray	204	174	-15%
Choctaw	215	232	8%	Muskogee	1,330	1,320	-1%
Cimarron	21	29	38%	Noble	175	133	-24%
Cleveland	2,718	2,486	-9%	Nowata	107	120	12%
Coal	41	61	49%	Okfuskee	137	134	-2%
Comanche	1,530	1,434	-6%	Oklahoma	14,508	13,696	-6%
Cotton	75	67	-11%	Okmulgee	455	480	5%
Craig	200	226	13%	Osage	390	373	-4%
Creek	902	721	-20%	Ottawa	454	471	4%
Custer	380	375	-1%	Pawnee	164	143	-13%
Delaware	490	477	-3%	Payne	861	871	1%
Dewey	53	55	4%	Pittsburg	587	595	1%
Ellis	38	32	-16%	Pontotoc	471	425	-10%
Garfield	933	925	-1%	Pottawatomie	1,066	969	-9%
Garvin	373	396	6%	Pushmataha	129	150	16%
Grady	711	561	-21%	Roger Mills	50	37	-26%
Grant	54	45	-17%	Rogers	917	873	-5%
Greer	61	44	-28%	Seminole	329	294	-11%
Harmon	38	26	-32%	Sequoyah	389	309	-21%
Harper	27	42	56%	Stephens	581	563	-3%
Haskell	103	78	-24%	Texas	187	257	37%
Hughes	105	69	-34%	Tillman	84	74	-12%
Jackson	299	319	7%	Tulsa	10,465	10,947	5%
Jefferson	43	48	12%	Wagoner	508	576	13%
Johnston	153	180	18%	Washington	662	663	0%
Kay	654	685	5%	Washita	109	111	2%
Kingfisher	169	160	-5%	Woods	82	67	-18%
Kiowa	84	87	4%	Woodward	235	281	20%
Latimer	130	139	7%	TOTAL	53,264	52,083	-2%





1997
S
 BY DATE

FATALITIE

1997
Oklahoma Traffic
Crash Facts

1/1	5	3/13	1	5/14	1	7/11	2	9/3	3	11/1	4
1/2	4	3/14	1	5/15	4	7/12	6	9/4	5	11/3	3
1/3	4	3/15	2	5/16	6	7/13	2	9/5	4	11/4	4
1/4	2	3/16	1	5/17	1	7/14	3	9/6	7	11/5	1
1/5	3	3/18	1	5/19	3	7/16	1	9/8	2	11/6	1
1/6	2	3/19	1	5/20	4	7/17	2	9/10	2	11/7	4
1/8	2	3/20	2	5/21	3	7/18	8	9/11	2	11/8	6
1/9	3	3/22	7	5/22	3	7/19	3	9/12	1	11/9	3
1/10	3	3/23	4	5/23	2	7/20	1	9/13	5	11/10	1
1/11	1	3/24	2	5/24	4	7/21	6	9/14	1	11/11	2
1/13	2	3/25	4	5/25	1	7/22	4	9/15	3	11/12	1
1/14	2	3/26	2	5/27	1	7/23	1	9/16	1	11/13	1
1/15	2	3/27	3	5/28	1	7/24	2	9/17	5	11/14	6
1/17	2	3/28	8	5/29	3	7/25	3	9/18	1	11/15	3
1/18	1	3/30	4	5/30	3	7/26	1	9/20	5	11/16	1
1/19	1	3/31	2	5/31	4	7/27	3	9/21	3	11/17	1
1/20	1	4/1	1	6/1	7	7/28	1	9/22	2	11/19	1
1/22	1	4/3	1	6/2	1	7/29	4	9/23	1	11/20	1
1/24	2	4/4	9	6/3	1	7/30	1	9/24	3	11/22	2
1/25	2	4/5	2	6/4	1	7/31	3	9/25	3	11/25	1
1/27	1	4/7	1	6/5	1	8/1	2	9/26	3	11/26	7
1/29	1	4/8	2	6/6	2	8/2	8	9/27	5	11/27	6
1/30	1	4/9	7	6/7	2	8/3	1	9/28	2	11/28	1
1/31	1	4/11	6	6/8	9	8/4	3	10/1	2	11/30	1
2/1	7	4/12	4	6/9	1	8/5	3	10/2	1	12/1	5
2/2	3	4/13	1	6/10	1	8/6	1	10/3	5	12/2	2
2/4	4	4/14	4	6/12	6	8/7	2	10/4	7	12/4	3
2/5	3	4/15	2	6/13	3	8/8	4	10/5	2	12/5	1
2/6	4	4/16	2	6/14	2	8/9	1	10/6	1	12/6	4
2/7	1	4/17	4	6/15	3	8/10	3	10/8	1	12/8	2
2/8	3	4/19	3	6/16	2	8/11	6	10/9	4	12/9	4
2/10	2	4/21	1	6/17	1	8/12	1	10/10	4	12/10	4
2/11	1	4/22	1	6/18	2	8/13	4	10/11	3	12/11	4
2/13	1	4/24	5	6/19	2	8/14	3	10/12	1	12/12	3
2/14	4	4/26	1	6/20	4	8/15	3	10/13	4	12/13	2
2/15	2	4/27	2	6/21	2	8/16	2	10/14	2	12/16	4
2/16	2	4/28	2	6/22	6	8/17	3	10/15	3	12/17	1
2/20	4	4/30	1	6/23	3	8/19	1	10/16	3	12/18	2
2/21	3	5/1	6	6/24	4	8/20	2	10/17	3	12/19	7
2/22	5	5/2	3	6/26	2	8/21	1	10/18	3	12/20	2
2/23	3	5/3	2	6/27	2	8/22	3	10/19	5	12/21	1
2/24	1	5/4	1	6/28	3	8/23	6	10/20	4	12/23	6
2/26	1	5/5	4	6/29	2	8/24	4	10/22	1	12/24	2
2/27	2	5/6	1	6/30	4	8/25	2	10/23	4	12/25	2
2/28	2	5/7	3	7/1	5	8/26	4	10/24	2	12/26	1
3/2	3	5/8	1	7/2	1	8/28	1	10/25	4	12/27	3
3/3	3	5/9	2	7/3	2	8/29	2	10/27	1	12/28	2
3/4	2	5/10	11	7/5	1	8/30	10	10/28	1	12/29	1
3/9	4	5/11	7	7/7	4	8/31	2	10/29	2	12/31	4
3/11	3	5/12	5	7/8	1	9/1	3	10/30	3	Total	846
3/12	2	5/13	1	7/9	2	9/2	1	10/31	1		

PERSONS/15

1997 FATALITIES BY PERSON TYPE								
Person Type	NON-OHP			OHP			Total Fatalities	
	F	M	Total	Unknown	F	M		Total
Bicycle		1	1		2	2	4	5
Parked Car						3	3	3
Driver	47	76	123	1	124	300	425	548
Pedestrian	11	27	38		10	22	32	70
Passenger	25	23	48		84	88	172	220
TOTALS	83	127	210	1	220	415	636	846

Person Type Driver includes motorcycle drivers.

AGE DISTRIBUTION OF DRIVERS INVOLVED IN CRASHES														
Age	Unknown		(O) No Injury		(C) Possible Injury		(B) Non-incapacitating Injury		(A) Incapacitating Injury		(K) Fatal Injury		Total	
	1996	1997	1996	1997	1996	1997	1996	1997	1996	1997	1996	1997	1996	1997
14 & Under	10	5	104	91	38	34	39	39	15	10	3	9	209	188
15 - 24	536	526	31842	31466	5802	5750	3785	3757	942	950	129	133	43036	42582
25 - 34	371	413	22210	21749	4475	4313	2473	2393	760	664	94	92	30383	29624
35 - 44	338	347	19367	19105	3785	3596	2043	2010	623	605	97	91	26253	25754
45 - 54	197	219	12288	12929	2463	2526	1177	1224	406	387	62	81	16593	17366
55 - 64	127	138	7582	7637	1373	1326	668	691	219	200	43	47	10012	10039
65 - 74	103	115	5622	5601	908	872	476	493	145	151	33	31	7287	7263
75 - 84	67	73	3362	3281	462	438	307	342	98	98	36	44	4332	4276
85 - 94	17	18	722	678	104	81	76	86	27	29	7	18	953	910
95 & over		1	14	20	1	2	1	1				1	16	25
Unknown	1364	1337	71	80	9	9	5	4	1	4		1	1450	1435
Total	3130	3192	103184	102637	19420	18947	11050	11040	3236	3098	504	548	140524	139462

AGE DISTRIBUTION OF YOUTHFUL DRIVERS INVOLVED IN CRASHES														
Age	Unknown		(O) No Injury		(C) Possible Injury		(B) Non-incapacitating Injury		(A) Incapacitating Injury		(K) Fatal Injury		Total	
	1996	1997	1996	1997	1996	1997	1996	1997	1996	1997	1996	1997	1996	1997
14 & Under	10	5	104	91	38	34	39	39	15	10	3	9	209	188
15	8	5	239	311	55	45	53	64	15	21	4	2	374	448
16	80	71	4863	4764	763	750	571	522	147	121	13	12	6437	6240
17	81	62	4330	4562	782	846	496	522	117	113	21	23	5827	6128
18	76	70	4254	4284	766	730	522	501	128	125	21	13	5767	5723
19	65	73	3665	3669	628	657	457	437	112	123	16	15	4943	4974
20	42	63	3233	3233	641	639	383	417	95	97	9	14	4403	4463
21	42	46	3104	2907	597	560	351	353	87	100	15	14	4196	3980
Total	404	395	23792	23821	4270	4261	2872	2855	716	710	102	102	32156	32144

HOLIDAY TRAFFIC FATALITIES

1997 Holiday	Beginning 6 p.m.	Ending Midnight	Total Hours		Fatalities		Fatality Rate per Hour		Change
			1996	1997	1996	1997	1996	1997	
New Year	Tuesday 31-Dec-96	Wednesday 01-Jan-97	78	30	3	5	0.04	0.17	0.13
Memorial Day	Friday 23-May-97	Monday 26-May-97	78	78	9	6	0.12	0.08	-0.04
Independence Day	Thursday 03-Jul-97	Friday 04-Jul-97	102	30	4	2	0.04	0.07	0.03
Labor Day	Friday 29-Aug-97	Monday 01-Sep-97	78	78	6	15	0.08	0.19	0.12
Thanksgiving	Wednesday 26-Nov-97	Sunday 30-Nov-97	102	102	15	11	0.15	0.11	-0.04
Christmas	Wednesday 24-Dec-97	Thursday 25-Dec-97	30	30	5	2	0.17	0.07	-0.10

HOLIDAY TRAFFIC FATALITIES 1980-1997

Holiday	1980	1981	1982	1983	1984	1985	1986	1987	1988	1989	1990	1991	1992	1993	1994	1995	1996	1997
New Year	18	10	10	11	4	1	1	5	2	4	4	10	3	4	3	7	3	5
Memorial Day	12	11	10	12	4	8	10	5	12	10	14	3	3	11	6	6	9	6
Independence Day	14	10	8	16	1	0	10	6	2	3	3	18	5	5	6	10	4	2
Labor Day	12	7	7	20	13	11	10	5	7	9	12	6	12	6	11	10	6	15
Thanksgiving	12	11	8	7	13	21	5	9	7	13	6	4	4	12	6	5	15	11
Christmas	13	9	3	5	6	2	5	11	4	6	4	5	7	3	8	4	5	2

Alcohol/Drug Related Driver Condition

By Driver Sex and Cause of Crash

Cause		Drinking/Impaired	Odor of Alcohol	Drug Use
CHANGED LANES UNSAFELY	F	5	5	6
	M	46	33	7
FAILED TO STOP	F	34	16	20
	M	141	88	22
FAILED TO YIELD	F	54	24	28
	M	172	123	41
FOLLOWED TOO CLOSELY	F	21	16	19
	M	74	40	14
IMPROPER OVERTAKING	F	2	1	4
	M	24	16	2
IMPROPER PARKING	F	0	0	1
	M	4	3	1
IMPROPER START	F	2	1	3
	M	3	2	3
IMPROPER TURN	F	46	27	17
	M	128	78	18
INATTENTION	F	54	43	14
	M	134	100	17
LEFT OF CENTER	F	20	9	4
	M	48	37	6
NOT KNOWN OR NO IMPROPER ACTION	F	15	14	4
	M	45	39	5
OTHER ACTION	F	2	1	0
	M	5	3	0
OTHER IMPROPER ACT OR MOVEMENT	F	509	133	43
	M	1902	401	84
PEDESTRIAN ACTION	F	2	1	0
	M	4	4	0
STOPPED IN TRAFFIC LANE	F			
	M	4	2	0
UNSAFE SPEED	F	83	75	19
	M	455	345	30
UNSAFE VEHICLE	F	7	4	1
	M	21	16	1
WRONG WAY	F	4	3	0
	M	9	4	0
Total		2514	1707	434

Drivers Involved in Alcohol Related Crashes

By County and Injury Severity

Injury Severity							
County	K	A	B	C	O	Unkn	Total
ADAIR	1	7	11	5	17		41
ALFALFA		1					1
ATOKA	2	3	3	1	8		17
BEAVER		2	2	1	7		12
BECKHAM	2	4	6	1	15		28
BLAINE	2	1	4	2	11		20
BRYAN	1	7	11	13	39		71
CADDO	1	8	15	11	32		67
CANADIAN		8	19	12	35		74
CARTER	1	11	20	14	45	1	92
CHEROKEE	3	10	6	13	31		63
CHOCTAW	2	6	9	5	7		29
CIMARRON	1		1		3		5
CLEVELAND	1	19	40	15	135	5	215
COAL		1	3		4		8
COMANCHE	2	14	36	18	106	2	178
COTTON			1	2	6		9
CRAIG	1	2	5	3	9		20
CREEK	1	10	17	10	40		78
CUSTER	1	3	10	8	17		39
DELAWARE		4	21	9	20		54
DEWEY			4	2	1		7
ELLIS	1	3	2		4		10
GARFIELD	1	2	28	8	42	1	82
GARVIN	6	5	9	11	17	1	49
GRADY	1	5	14	7	19		46
GRANT		1	4		1		6
GREER		1		1	2		4
HARMON			1		1		2
HARPER				1	6		7
HASKELL		2	1	3	1		7
HUGHES	1	2	1	1	9		14
JACKSON	1	1	2	2	16		22
JEFFERSON		2			3		5
JOHNSTON	1	5	8	3	10		27
KAY	6	7	26	4	34		77
KINGFISHER		3		2	6		11
KIOWA		1	7		12		20
LATIMER		1	8	5	8		22

LOGAN			5	12	7	16		40
LOVE			1	5	2	7		15
MAJOR	1		2	5	1	5		14
MARSHALL			7	3	2	6		18
MAYES	3		7	15	7	31		63
MCCLAIN	3		5	9	8	21		46
MCCURTAIN	1	12	24	11	40	1	89	
MCINTOSH	4	4		6	12	1	27	
MURRAY		2	6	5	10		23	
MUSKOGEE	3	9	11	26	43		92	
NOBLE		4	6		5		15	
NOWATA	1	1	6	5	4		17	
OKFUSKEE		1	2	4	12		19	
OKLAHOMA	9	58	176	139	514	17	913	
OKMULGEE	1	1	10	11	35		58	
OSAGE	2	7	11	13	29		62	
OTTAWA	1	7	12	6	22		48	
PAWNEE		4	2	4	5	1	16	
PAYNE	2	3	13	7	44	1	70	
PITTSBURG	3	7	25	7	31		73	
PONTOTOC		4	13	4	12		33	
POTTAWATOMIE	1	3	21	10	31		66	
PUSHMATAHA		3	3	1	5		12	
ROGER MILLS		1	1	1	1		4	
ROGERS		10	25	13	30		78	
SEMINOLE	1	6	6	4	20		37	
SEQUOYAH	2	9	11	6	27		55	
STEPHENS		3	11	5	26	1	46	
TEXAS	2	7	4	4	12		29	
TILLMAN	1		1		3		5	
TULSA	11	70	138	91	452	6	768	
WAGONER	2	16	14	14	35	1	82	
WASHINGTON	1	5	6	9	34		55	
WASHITA		2	4	2	4		12	
WOODS	1		2	1			4	
WOODWARD	1	2	3	2	8		16	
Total	102	457	998	644	2415	39	465	

Injury Severity							
County	K	A	B	C	O	Unkn	Total
LEFLORE	3	3	16	12	32		66
LINCOLN	2	4	11	1	12		30

Drivers Involved in Unsafe Speed Crashes By County and Injury Severity

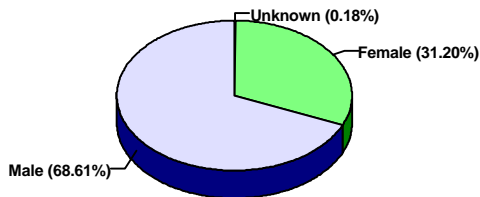
County	Injury Severity						Total
	K	A	B	C	O	Unkn	
ADAIR	2	2	11	11	29		55
ALFALFA		1	1	3	8		13
ATOKA		2	13	7	31		53
BEAVER		4	11	5	34		54
BECKHAM		7	18	11	47	3	86
BLAINE		2	14	7	27	1	51
BRYAN	3	7	16	26	73	3	128
CADDO	2	10	22	11	53	3	101
CANADIAN	4	8	29	29	126	8	204
CARTER	2	9	22	18	102	2	155
CHEROKEE	4	19	28	64	167	7	289
CHOCTAW	3	1	18	15	19	4	60
CIMARRON	1	2	5	2	43	1	54
CLEVELAND	1	25	61	111	446	9	653
COAL		1	6	2	10	2	21
COMANCHE	2	10	43	36	176	10	277
COTTON			4	3	8	3	18
CRAIG	2	1	20	11	41	1	76
CREEK	4	11	37	33	156	2	243
CUSTER	3	5	14	19	89	3	133
DELAWARE	4	11	32	32	94	3	176
DEWEY			3	6	10		19
ELLIS		1	3	1	12		17
GARFIELD	1	3	21	25	79	5	134
GARVIN	4	11	18	25	61		119
GRADY	4	8	38	29	107	5	191
GRANT	2	3	6		9		20
GREER		1	2	2	10		15
HARMON	1	1	1	1	5		9
HARPER		1	2	1	13		17
HASKELL	1	3	1	5	22	1	33
HUGHES	3		6	7	13	1	30
JACKSON	1	4	13	14	45		77
JEFFERSON	1	1	2	1	8		13
JOHNSTON		9	18	9	37	3	76
KAY	2	2	23	16	74	3	120
KINGFISHER		2	10	8	34	1	55
KIOWA		1	12	2	21	1	37
LATIMER	1	4	12	11	40		68

County	Injury Severity						Total
	K	A	B	C	O	Unkn	
LEFLORE	4	10	22	41	105	3	185
LINCOLN	4	8	18	27	86	5	148
LOGAN		6	19	20	53	3	101
LOVE	1	3	6	8	40	2	60
MAJOR		1	10	7	18		36
MARSHALL	2	6	15	8	33		64
MAYES	3	7	34	36	100	4	184
MCCLAIN	4	10	29	32	94	4	173
MCCURTAIN	7	15	25	30	115	10	202
MCINTOSH	2	7	5	10	35	1	60
MURRAY	1	8	2	13	48	2	74
MUSKOGEE	4	19	17	42	95	6	183
NOBLE		1	9	6	35		51
NOWATA	3	1	10	8	25	1	48
OKFUSKEE	1	2	3	8	9		23
OKLAHOMA	19	79	339	617	2428	63	3545
OKMULGEE	1	4	16	27	49		97
OSAGE	1	5	16	19	50	2	93
OTTAWA	2	8	23	18	100	2	153
PAWNEE	2		5	10	27	3	47
PAYNE	2	3	23	24	118	5	175
PITTSBURG	4	14	43	13	114	1	189
PONTOTOC	1	7	22	16	54	2	102
POTTAWATOMIE	2	13	24	21	97	6	163
PUSHMATAHA	1	6	10	9	35		61
ROGER MILLS		1	5	3	8		17
ROGERS	5	12	60	61	288	12	438
SEMINOLE		5	3	15	50	1	74
SEQUOYAH	3	9	11	19	86	6	134
STEPHENS	4	8	13	12	46		83
TEXAS	1	9	16	23	58	2	109
TILLMAN	1		3	5	13		22
TULSA	12	86	322	463	1830	47	2760
WAGONER	2	10	26	52	113		203
WASHINGTON	1	7	22	22	149		201
WASHITA		2	7	10	33	4	56
WOODS	2		1	4	15		22
WOODWARD		7	13	18	37		75
Total	160	592	1863	2396	9068	282	14361

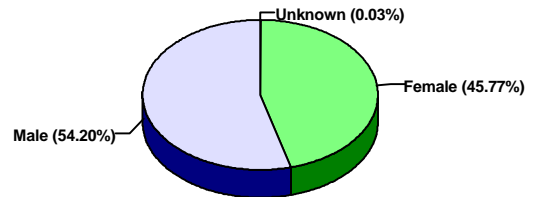
Drivers Involved in Crashes by Sex and Injury Severity

Sex	K Fatal Injury	A Incapacitating Injury	B Non-Incapacitating Injury	C Possible Injury	O No Injury	Unknown Injury	Total Drivers
Unknown	1	1	1	4	26	1254	1287
Female	171	1418	5286	10528	41390	773	59566
Male	376	1679	5753	8415	61221	1165	78609
Total	548	3098	11040	18947	102637	3192	139462

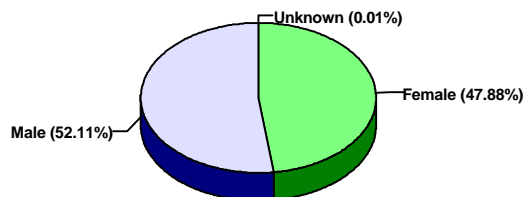
K - Fatal Driver Injuries
by Sex of Driver



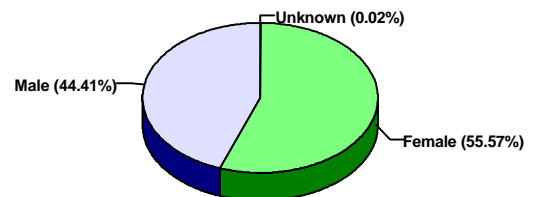
A - Incapacitating Driver Injuries
by Sex of Driver



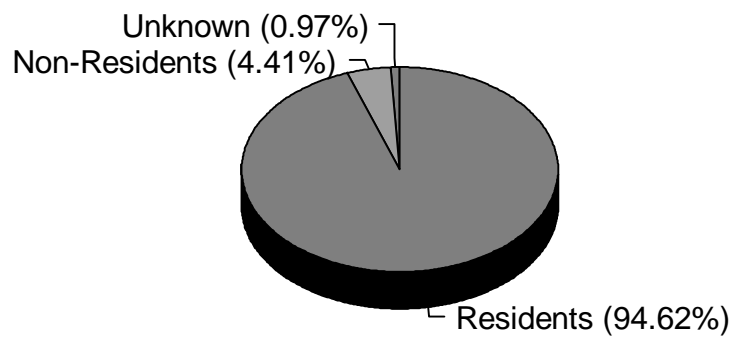
B - Non-Incapacitating Driver Injuries
by Sex of Driver



C - Possible Driver Injuries
by Sex of Driver

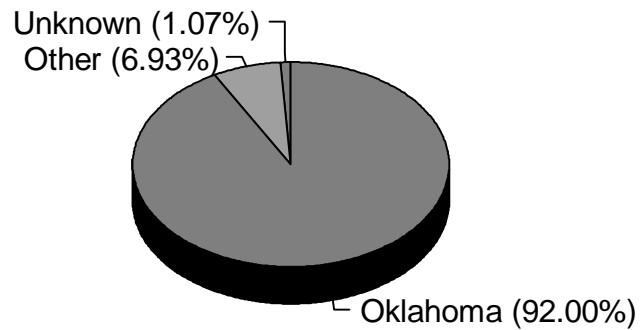


Drivers Involved in Crashes
by Residency and Driver License State



Drivers Involved in Crashes by Residency	
Residents	131956
Non-Residents	6152
Unknown	1354
Total	139462

Drivers Involved in Crashes
by Driver License State



Drivers Involved in Crashes by Driver License State	
Oklahoma	128299

Non-Oklahoma	9670
Unknown	1493
Total	139462

1997 Crashes by County and Injury Severity

COUNTY	(K) Fatal Crashes		(A) Incapacitating Crashes		(B) Non-Incapacitating Crashes		(C) Possible Injury Crashes		(O) Non-Injury Crashes		Unknown Injury Crashes		Total Crashes
	OHP	Non-OHP	OHP	Non-OHP	OHP	Non-OHP	OHP	Non-OHP	OHP	Non-OHP	OHP	Non-OHP	Statewide
ADAIR	5		22		49	8	33	28	78	54	5	2	284
ALFALFA			4		11	1	9	1	60	6	1	7	100
ATOKA	5		16	3	41	3	16	5	83	12			184
BEAVER	4		14	1	38	1	12	4	89	30	1	9	203
BECKHAM	7		19	10	58	30	23	38	120	160	3	9	477
BLAINE	3		8	1	27	3	21	12	75	50	1	6	207
BRYAN	9	3	27	18	52	43	99	76	175	361	4	12	879
CADDO	20	3	35	3	53	14	49	27	131	143	15	1	494
CANADIAN	5	7	26	26	48	128	59	155	173	535	5	19	1,186
CARTER	4	5	29	13	60	86	57	150	196	592	6	25	1,223
CHEROKEE	12	2	46	11	67	29	103	73	203	285	11	6	848
CHOCTAW	4		23	2	55	7	24	22	58	67	5	1	268
CIMARRON	4		3		8	2	5	3	61	14	1		101
CLEVELAND	10	12	41	152	62	439	99	779	252	2,204	1	110	4,161
COAL	1		4	2	22		6	3	26	11		3	78
COMANCHE	8	4	37	34	94	275	55	437	174	1,536	6	90	2,750
COTTON	1		1	1	18	4	14	3	57	16	1	3	119
CRAIG	6	2	9	2	46	15	44	18	106	96	3	9	356
CREEK	15	4	44	22	87	78	106	129	198	389	7	19	1,098
CUSTER	6		21	11	47	35	54	76	142	274	3	13	682
DELAWARE	12	2	23	6	76	15	80	64	173	147	6	9	613
DEWEY	2		4	1	14	3	11	1	37	8		3	84
ELLIS	2		7		12		4	1	24	5	1	1	57
GARFIELD	5	7	8	46	51	144	46	308	105	1,206	5	119	2,050
GARVIN	11	2	45	6	58	18	80	52	178	182	11	7	650
GRADY	15	2	25	18	99	54	64	71	213	299	5	9	874
GRANT	3		8		17		10	1	47		1		87
GREER			4		11	2	9	4	26	14		2	72
HARMON	2		1	1	5	3	3	3	10	20	2	1	51
HARPER	1		7	1	6	4	7	2	40	12		1	81
HASKELL	4		14		10		19	2	57	3	2	1	112
HUGHES	6		9		20	2	12	2	44	4	1		100
JACKSON	2		8	9	22	44	24	100	86	309	1	11	616
JEFFERSON	2		8	1	11	1	5	5	37	14			84
JOHNSTON	4		19	4	41	6	35	15	98	48	3	9	282
KAY	14		23	6	99	79	32	179	147	484	10	29	1,102

1997 Crashes

by County and Injury Severity

COUNTY	(K) Fatal Crashes		(A) Incapacitating Crashes		(B) Non-Incapacitating Crashes		(C) Possible Injury Crashes		(O) Non-Injury Crashes		Unknown Injury Crashes		Total Crashes
	OHP	Non-OHP	OHP	Non-OHP	OHP	Non-OHP	OHP	Non-OHP	OHP	Non-OHP	OHP	Non-OHP	Statewide
KINGFISHER	2		10	1	35	7	20	25	79	84	3	5	271
KIOWA	2		5	1	42	2	4	8	67	43		3	177
LATIMER	3		17	1	30	8	27	11	62	39	3	3	204
LEFLORE	8		28	10	44	31	110	87	145	215	3	17	698
LINCOLN	16	1	34	1	57	15	64	31	142	114	3	11	489
LOGAN	5		21	8	70	34	55	46	106	160	2	8	515
LOVE	2		20		26	3	22	1	80	4	3	1	162
MAJOR	1		7		36	1	17	2	53	6			123
MARSHALL	5		17		44	2	18	17	63	48	2	5	221
MAYES	12	1	30	7	109	24	55	72	188	129	13	7	647
MCCLAIN	12	5	38	8	69	35	70	72	134	187	3	16	649
MCCURTAIN	15		47	12	71	24	92	77	269	230	19	11	867
MCINTOSH	8	4	22	3	22	8	28	24	118	81	4	4	326
MURRAY	2		19	2	19	12	36	27	84	96	6	2	305
MUSKOGEE	15	1	55	31	27	149	126	375	145	782	7	47	1,760
NOBLE	2		13	2	37	6	21	2	90	31		1	205
NOWATA	5		3		21	7	36	15	41	58	2	6	194
OKFUSKEE	3		22	2	21	1	23	9	41	32	1	6	161
OKLAHOMA	26	58	115	579	448	2,341	827	4,254	1,901	9,494	21	592	20,656
OKMULGEE	7	3	14	9	57	55	72	78	90	275	2	18	680
OSAGE	12		29	5	76	21	58	31	120	97	6	12	467
OTTAWA	11	1	25	10	87	45	68	48	164	281	5	15	760
PAWNEE	8		13	3	35	5	31	7	70	56		4	232
PAYNE	8	4	28	26	84	146	51	206	149	715	5	19	1,441
PITTSBURG	14	2	45	17	108	28	47	101	196	262	2	4	826
PONTOTOC	7	1	19	26	56	48	57	43	164	110	11		542
POTTAWATOMIE	7	1	39	39	100	127	86	181	184	538	7	21	1,330
PUSHMATAHA	4		16	5	29	5	20	4	68	47	2	2	202
ROGER MILLS			7		11	1	7		19	7		3	55
ROGERS	12	3	60	17	166	57	159	91	356	351	11	3	1,286
SEMINOLE	10		29	9	30	13	53	38	115	104	6	4	411
SEQUOYAH	17		31	5	36	8	67	34	228	99	7		532
STEPHENS	6	3	30	25	53	98	22	119	63	428	2	15	864
TEXAS	9	1	15	2	36	16	43	54	105	178	2	8	469
TILLMAN	1		3	2	14	10	4	23	18	74	1	2	152
TULSA	27	45	127	578	351	2,132	372	3,206	799	7,314	29	442	15,422
WAGONER	8	1	53	6	76	43	85	94	213	251	4	11	845
WASHINGTON	3	1	14	25	23	129	44	179	74	685	2	25	1,204
WASHITA	3		11		28	1	34		88	5	3	1	174
WOODS	3		1	2	11	7	7	11	42	62		9	155
WOODWARD	3		10	10	34	35	25	52	49	244		1	463
Total	538	191	1,784	1,900	4,224	7,316	4,392	12,604	10,961	33,606	329	1,910	79,755
Statewide	729		3,684		11,540		16,996		44,567		2,239		79,755

OHP indicates crashes worked by the Oklahoma Highway Patrol. These crashes are generally on rural roads and highways.



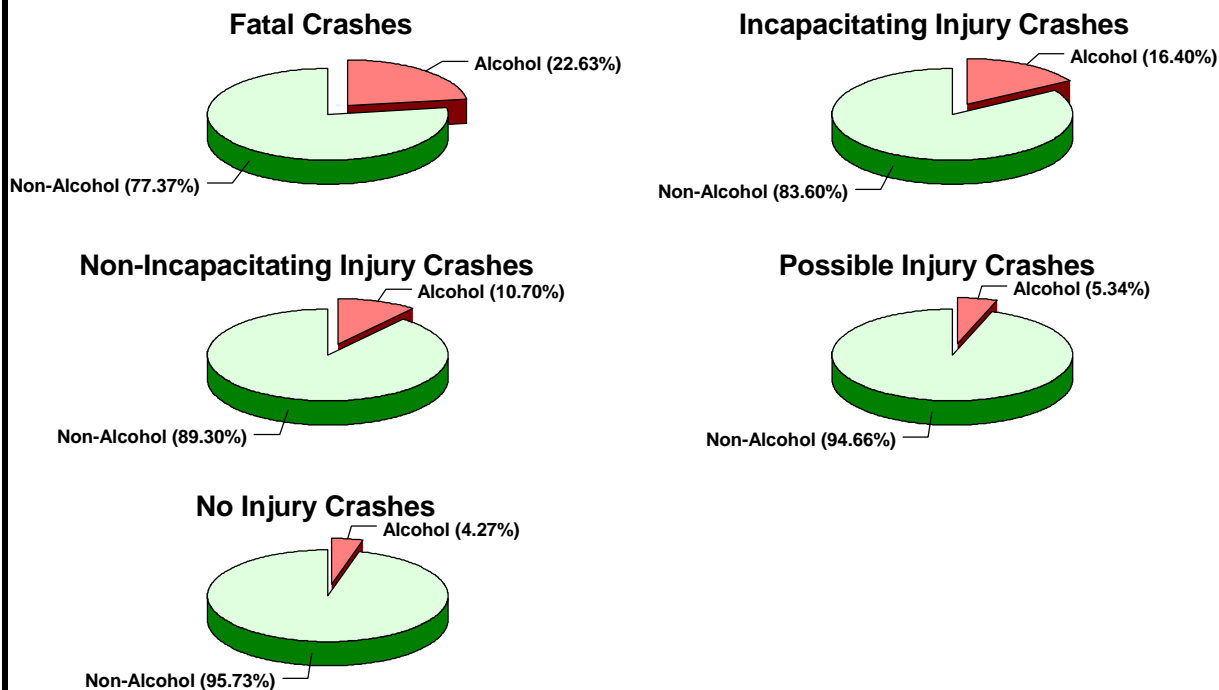
Non-OHP indicates crashes worked by agencies other than Oklahoma Highway Patrol. These crashes are generally worked within municipalities.

1997 Crashes by Alcohol Involvement

Most Severe Injury of Crash	Alcohol Related Crashes	Non-Alcohol Related Crashes	Total Crashes	% of Total Alcohol Crashes	% of Total Non-Alcohol Crashes
(K) Fatal	165	564	729	3.42%	0.75%
(A) Incapacitating Injury	604	3,080	3,684	12.50%	4.11%
(B) Non-Incapacitating Injury	1,235	10,305	11,540	25.56%	13.75%
(C) Possible Injury	907	16,089	16,996	18.77%	21.47%
(O) No Injury	1,905	42,662	44,567	39.43%	56.94%
Unknown Injury	15	2,224	2,239	0.31%	2.97%
Total	4,831	74,924	79,755		

The report defines an alcohol involvement as a crash involving at least one driver whose condition is determined by the investigating officer as: drinking -- ability impaired or odor of alcoholic beverage. Crash level injury is determined by reviewing the injuries of all persons involved in a crash. The most severe

1997 Alcohol Related Crashes



injury determines the crash level injury rating for the crash.

Contributing Causes of Statewide Crashes by Crash Injury Severity

Cause of Crash	(K)	(A)	(B)	(C)	(O)	Unknown	Total
	Fatal Injury	Incapacitating Injury	Non-Incapacitating Injury	Possible Injury	No Injury		
CHANGED LANES UNSAFELY	11	74	246	508	2835	36	3710
FAILED TO STOP	39	318	1153	1927	3601	6	7107
FAILED TO YIELD	96	612	1968	3102	8410	102	14290
FOLLOWED TOO CLOSELY	4	158	954	2751	5168	50	9085
IMPROPER OVERTAKING	8	24	100	135	596	14	877
IMPROPER PARKING	1	5	18	15	121	64	224
IMPROPER START	1	4	32	122	329	7	495
IMPROPER TURN	28	388	1266	1811	5110	121	8724
INATTENTION	41	290	1087	1730	3281	193	6622
LEFT OF CENTER	51	117	267	265	833	20	1553
NOT KNOWN OR NO IMPROPER ACTION	13	125	576	515	2257	37	3523
OTHER ACTION	5	25	54	60	336	8	488
OTHER IMPROPER ACT OR MOVEMENT	162	663	1496	1396	6200	1153	11070
PEDESTRIAN ACTION	52	126	168	109	24		479
STOPPED IN TRAFFIC LANE	1	8	21	30	92	3	155
UNSAFE SPEED	201	678	1949	2237	4507	326	9898
UNSAFE VEHICLE	8	63	175	267	830	32	1375
WRONG WAY	7	6	10	16	37	4	80
Total	729	3684	11540	16996	44567	2239	79755

Crash Injury Severity indicates the most severe injury of all persons involved in the crash.

Contributing Causes of Statewide Crashes 1996 - 1997 Change from previous year

Cause of Crash	1996	1997	-/ %	% Difference
CHANGED LANES UNSAFELY	3,817	3,710	-107	-2.8%
FAILED TO STOP	7,787	7,107	-680	-8.7%
FAILED TO YIELD	14,190	14,290	100	0.7%
FOLLOWED TOO CLOSELY	8,248	9,085	837	10.1%
IMPROPER OVERTAKING	837	877	40	4.8%
IMPROPER PARKING	207	224	17	8.2%
IMPROPER START	397	495	98	24.7%
IMPROPER TURN	8,696	8,724	28	0.3%
INATTENTION	6,362	6,622	260	4.1%
LEFT OF CENTER	1,526	1,553	27	1.8%
NOT KNOWN OR NO IMPROPER ACTION	3,461	3,523	62	1.8%
OTHER ACTION	1,237	488	-749	-60.6%
OTHER IMPROPER ACT OR MOVEMENT	8,796	8,394	-402	-4.6%
DUI	2,859	2,676	-183	-6.4%
PEDESTRIAN ACTION	444	479	35	7.9%
STOPPED IN TRAFFIC LANE	177	155	-22	-12.4%
UNSAFE SPEED	10,230	9,898	-332	-3.2%
UNSAFE VEHICLE	1,405	1,375	-30	-2.1%
WRONG WAY	81	80	-1	-1.2%
Total	80,757	79,755	-1002	-1.2%

NOTE: 1996 numbers may differ from the 1996 Crash Fact Book because crashes have been added to the database since publication.

CONTRIBUTING CAUSES OF OHP CRASHES 1996 - 1997

Cause of Crash	1996	1997	-/ %	% Difference
CHANGED LANES UNSAFELY	1,019	959	-60	-5.9%
FAILED TO STOP	356	306	-50	-14.0%
FAILED TO YIELD	1,880	2,002	122	6.5%
FOLLOWED TOO CLOSELY	1,272	1,531	259	20.4%
IMPROPER OVERTAKING	300	351	51	17.0%
IMPROPER PARKING	70	94	24	34.3%
IMPROPER START FROM	48	38	-10	-20.8%
IMPROPER TURN	1,021	950	-71	-7.0%
INATTENTION	1,873	1,789	-84	-4.5%
LEFT OF CENTER	831	848	17	2.0%
NOT KNOWN OR NO IMPROPER ACTION	2,113	2,068	-45	-2.1%
OTHER ACTION	355	331	-24	-6.8%
OTHER IMPROPER ACT OR MOVEMENT	2,315	2,503	188	8.1%
DUI	1,463	1,297	-166	-11.3%
PEDESTRIAN ACTION	76	67	-9	-11.8%
STOPPED IN TRAFFIC LANE	96	78	-18	-18.8%
UNSAFE SPEED	6,437	6,289	-148	-2.3%
UNSAFE VEHICLE	660	698	38	5.8%
WRONG WAY ON	28	29	1	3.6%
Total	22,213	22,228	15	0.1%

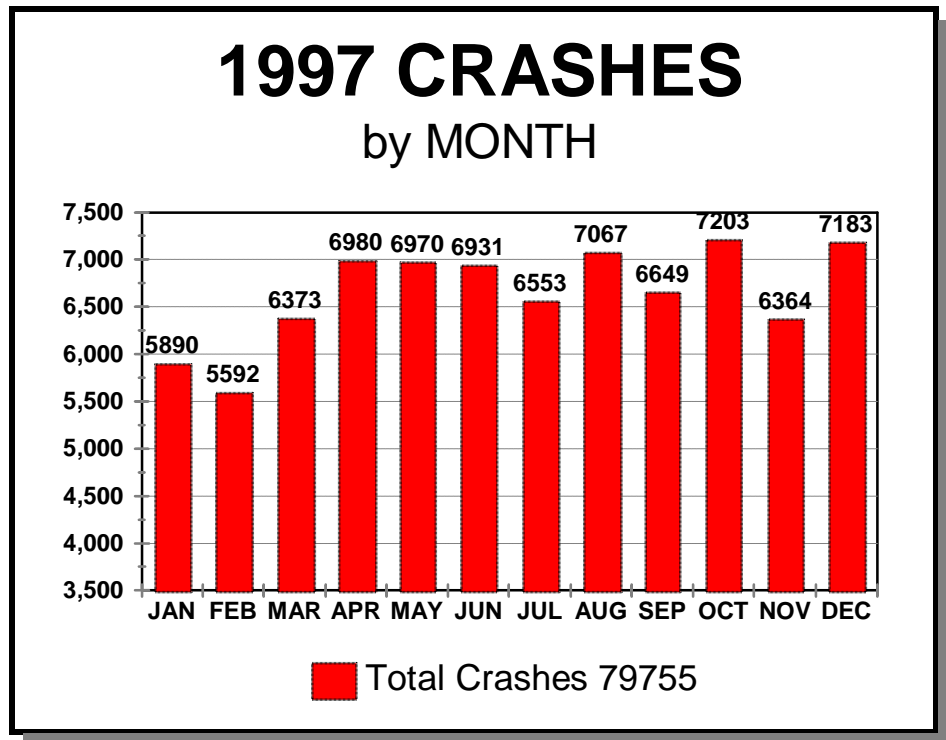
NOTE: 1996 numbers may differ from the 1996 Crash Fact Book because crashes have been added to the database since publication.

CONTRIBUTING CAUSES OF NON-OHP (MUNICIPAL) CRASHES 1996 - 1997

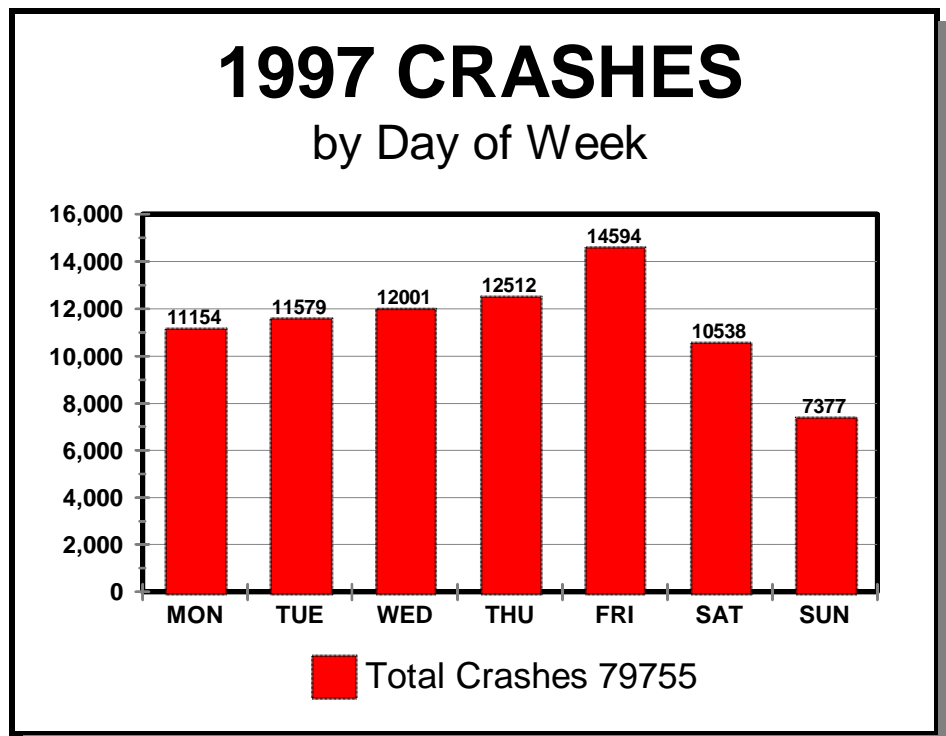
Cause of Crash	1996	1997	-/ %	% Difference
CHANGED LANES UNSAFELY	2,798	2,751	-47	-1.7%
FAILED TO STOP	7,431	6,801	-630	-8.5%
FAILED TO YIELD	12,310	12,288	-22	-0.2%
FOLLOWED TOO CLOSELY	6,976	7,554	578	8.3%
IMPROPER OVERTAKING	537	526	-11	-2.0%
IMPROPER PARKING	137	130	-7	-5.1%
IMPROPER START	349	457	108	30.9%
IMPROPER TURN	7,675	7,774	99	1.3%
INATTENTION	4,489	4,833	344	7.7%
LEFT OF CENTER	695	705	10	1.4%
NOT KNOWN OR NO IMPROPER ACTION	1,348	1,455	107	7.9%
OTHER ACTION	882	157	-725	-82.2%
OTHER IMPROPER ACT OR MOVEMENT	6,481	5,891	-590	-9.1%
DUI	1,396	1,379	-17	-1.2%
PEDESTRIAN ACTION	368	412	44	12.0%
STOPPED IN TRAFFIC LANE	81	77	-4	-4.9%
UNSAFE SPEED	3,793	3,609	-184	-4.9%
UNSAFE VEHICLE	745	677	-68	-9.1%
WRONG WAY	53	51	-2	-3.8%
Total	58,544	57,527	-1017	-1.7%

NOTE: 1996 numbers may differ from the 1996 Crash Fact Book because crashes have been added to the database since publication.

1997 CRASHES	
MONTH	CRASHES
JAN	5,890
FEB	5,592
MAR	6,373
APR	6,980
MAY	6,970
JUN	6,931
JUL	6,553
AUG	7,067
SEP	6,649
OCT	7,203
NOV	6,364
DEC	7,183
TOTAL	79,755



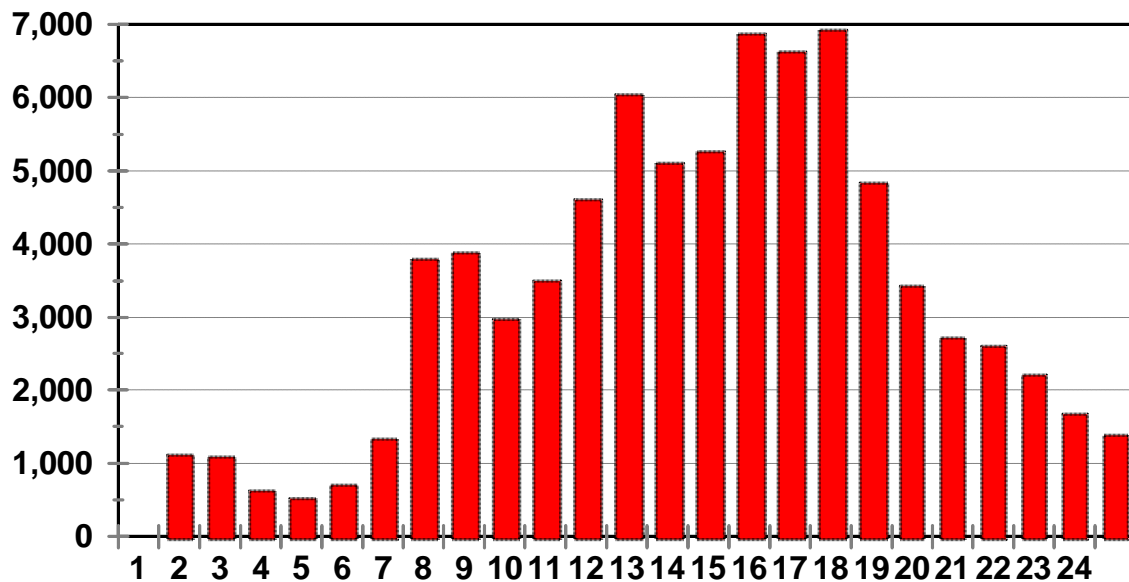
1997 CRASHES	
DAY	CRASHES
MON	11,154
TUE	11,579
WED	12,001
THU	12,512
FRI	14,594
SAT	10,538
SUN	7,377
TOTAL	79,755



1997 CRASHES			
TIME	CRASHES	TIME	CRASHES
00:00	1,385	12:00	6,037
01:00	1,110	13:00	5,103
02:00	1,088	14:00	5,263
03:00	628	15:00	6,872
04:00	519	16:00	6,626
05:00	697	17:00	6,927
06:00	1,329	18:00	4,832
07:00	3,789	19:00	3,424
08:00	3,885	20:00	2,710
09:00	2,969	21:00	2,598
10:00	3,490	22:00	2,204
11:00	4,598	23:00	1,672
12:00	6,037	TOTAL	79,755

1997 CRASHES

by Time of Day



■ Total Crashes 79755

24 Hour
Time

1997 ALCOHOL RELATED CRASHES					
by Crash Injury Severity and Number of Vehicles Involved					
Crash Injury Severity	One Vehicle	Two Vehicles	Three Vehicles	Four or more Vehicles	Total
Fatal Injury	104	53	6	2	165
Incapacitating Injury	387	185	20	12	604
Non-Incapacitating Injury	722	448	54	11	1,235
Possible Injury	351	497	46	13	907
No Injury	902	918	76	9	1,905
Unknown	9	6			15
Total	2,475	2,107	202	47	4,831

For this report a crash is classified as alcohol related if the condition of at least one driver is considered to be impaired or there is an odor of alcohol.

1997 Alcohol Related Crashes							
by Cause of Crash and Injury Severity							
Cause of Crash	(K) Fatal Injury	(A) Incapacitating Injury	(B) Non-Incapacitating Injury	(C) Possible Injury	(O) No Injury	Unknown Injury	Total
CHANGED LANES UNSAFELY		5	12	11	36		64
FAILED TO STOP	7	17	58	56	79	1	218
FAILED TO YIELD	7	29	54	61	109	2	262
FOLLOWED TOO CLOSELY		3	18	39	53		88
IMPROPER OVERTAKING		2	5	7	12		26
IMPROPER PARKING		2	1	1			4
IMPROPER START		1	1	1	3		6
IMPROPER TURN	3	15	37	49	93	1	198
INATTENTION	2	23	63	40	97		225
LEFT OF CENTER	7	14	22	9	35		87
NOT KNOWN OR NO IMPROPER ACTION	1	4	19	14	36		74
OTHER ACTION		1	1		5		7
OTHER IMPROPER ACT OR MOVEMENT	9	34	98	58	167	2	368
DUI	64	314	653	429	976	7	2443
PEDESTRIAN ACTION	15	31	16	18	1		81
STOPPED IN TRAFFIC LANE	1	1	1	1	1		5
UNSAFE SPEED	44	101	166	106	188	2	607
UNSAFE VEHICLE	1	3	8	6	11		29
WRONG WAY	4	4	2	1	3		14
Total	165	604	1235	907	1905	15	4831

Crash injury severity is based on the most severe injury that occurred in the crash.

Cellular Telephone Usage in Crashes by Cause of Crash and Crash Injury Severity							
Cause of Crash	(K) Fatal Injury	(A) Incapacitating Injury	(B) Non- incapacitating Injury	(C) Possible Injury	(O) No Injury	Unknown	Total
CHANGED LANES UNSAFELY		1	1		6		8
FAILED TO STOP		2	1	6	8		17
FAILED TO YIELD	1		2	1	14		18
FOLLOWED TOO CLOSELY			3	6	8		17
IMPROPER TURN			4	8	9		21
INATTENTION		2	4	8	15		29
LEFT OF CENTER		1	1		1		3
NOT KNOWN OR NO IMPROPER ACTION					2		2
DUI		2	1	2	1		6
OTHER IMPROPER ACT OR MOVEMENT		2	2	5	9		12
PEDESTRIAN ACTION		1	1				2
UNSAFE SPEED	1		2		7	1	11
UNSAFE VEHICLE				1			1
WRONG WAY					1		1
Total	2	9	21	35	80	1	148

Cellular Telephone Usage in Crashes By Cause of Crash				
Cause of Crash	1994	1995	1996	1997
CHANGED LANES UNSAFELY	7	5	7	8
FAILED TO STOP	8	13	13	17
FAILED TO YIELD	17	17	16	18
FOLLOWED TOO CLOSELY	14	17	16	17
IMPROPER TURN	9	13	10	21
IMPROPER OVERTAKING	1	0	1	
IMPROPER PARKING	0	1	0	
INATTENTION	22	28	26	29
LEFT OF CENTER	3	3	3	3
NOT KNOWN OR NO IMPROPER ACTION				2
DUI	7	5	8	6
OTHER IMPROPER ACT OR MOVEMENT	19	13	18	12
PEDESTRIAN ACTION				2
STOPPED IN TRAFFIC LANE	1	0	0	
UNSAFE SPEED	10	10	10	11
UNSAFE VEHICLE	1	3	0	1
WRONG WAY	0	0	0	1
TOTALS	119	128	128	148

The injuries columns for the motorcycle section include (C) possible injuries, (B) non-incapacitating injuries, and (A) incapacitating injuries.

Motorcycle Fatalities & Injuries		
Year	Fatalities	Injuries
1997	30	691
1996	27	879
1995	38	767
1994	31	888
1993	35	960
1992	35	10261
1991	37	1126
1990	39	1140

Motorcycle Fatalities by Age & Sex			
Age	Female	Male	Total
12		1	1
14		1	1
15	1	1	2
17		1	1
18		1	1
19	1	2	3
20	1		1
21		1	1
35	1	2	3
36	1	1	2
38		2	2
41		2	2
42		2	2
44		2	2
45		1	1
47		1	1
49		1	1
50		1	1
52		1	1
55		1	1
Total	5	25	30

Motorcycle Fatalities by Sex and Person Type			
Person Type	Female	Male	Total
Driver	1	25	26
Passenger	4		4
Total	5	25	30

Motorcycle Drivers in Fatal Crashes by Condition of Driver				
Normal	Ability Impaired	Odor of Alcohol	Unknown	Total
18	1	1	6	26

Motorcycle Fatalities by Helmet Use		
Not in Use	Helmet	Total
25	5	30

Motorcycle Crashes by Injury Severity					
Year	Fatal Crashes	Injury Crashes	Non-Injury Crashes	Unknown Injury	Total Crashes
1997	29	598	100	6	733
1996	27	726	36		789
1995	37	767	25		829
1994	29	773	43		845
1993	33	764	140		937
1992	32	906	191		1129
1991	37	914	280		1231
1990	39	1016	285		1340

1997 Motorcycle Crashes by Cause	
CAUSE	CRASHES
CHANGED LANES UNSAFELY	21
FAILED TO STOP	31
FAILED TO YIELD	125
FOLLOWED TOO CLOSELY	43
IMPROPER OVERTAKING	14
IMPROPER PARKING	1
IMPROPER START	8
IMPROPER TURN	102
INATTENTION	54
LEFT OF CENTER	15
NOT KNOWN OR NO IMPROPER ACTION	64
OTHER ACTION	10
OTHER IMPROPER ACT OR MOVEMENT	83
PEDESTRIAN ACTION	3
UNSAFE SPEED	145
UNSAFE VEHICLE	13
WRONG WAY	1
TOTAL	733

Statewide Motorcycle Statistics			
1972 - 1997			
Year	Killed	Injured	Registrations
1997	30	691	51,581
1996	27	726	58,442
1995	38	767	55,146
1994	31	888	56,008
1993	35	960	54,899
1992	35	1,601	56,107
1991	37	1,126	58,111
1990	39	1,140	59,964
1989	39	1,215	60,000
1988	48	1,261	64,056
1987	45	1,245	67,802
1986	60	1,652	106,940
1985	68	1,511	107,840
1984	64	1,592	105,963
1983	61	1,807	127,809
1982	79	2,338	132,516
1981	92	2,444	127,957
1980	90	1,636	125,380
1979	80	1,656	122,764
1978	74	1,541	113,902
1977	72	1,774	109,847
1976	54	1,592	109,443
1975	59	1,434	107,501
1974	41	1,645	104,059
1973	47	1,568	94,156
1972	55	1,490	84,536

PERSONS INJURED IN CRASHES INVOLVING A SCHOOL BUS
by County and Injury Severity

	1994						1995						1996						1997																	
	Unknown Injury	O No Injury	C Possible Injury	B Non-Incapacitating Injury	A Incapacitating Injury	K Fatal Injury	Total Injuries	Unknown Injury	O No Injury	C Possible Injury	B Non-Incapacitating Injury	A Incapacitating Injury	K Fatal Injury	Total Injuries	Unknown Injury	O No Injury	C Possible Injury	B Non-Incapacitating Injury	A Incapacitating Injury	K Fatal Injury	Total Injuries	Unknown Injury	O No Injury	C Possible Injury	B Non-Incapacitating Injury	A Incapacitating Injury	K Fatal Injury	Total Injuries								
ADAIR		2	1				3		2					2		4		3										7		4	16	10				30
ALFALFA																2	3												5							
ATOKA									2		1			3																						
BEAVER	1	2					3									2												2								
BECKHAM		2					2									2												2								
BLAINE																																				2
BRYAN			6	9	1		16	11	2					13	10	10	2										22	1	7	4	1	1			14	
CADDO		5	1				6	2						2	4	5	1										10									
CANADIAN		4	3	1	2		10	1	11	2	11			25	5	25	12	1									43	1	5	1	4	1	1		13	
CARTER		7		2			9	14	1		1			16	7		1										8	2	2						4	
CHEROKEE		2					2								1	9	3										13	4	4						8	
CHOCTAW	2	2					4								2	8	3										13									
CIMARRON	1	1					2								2												2									
CLEVELAND	5	24	23	3	2		57	1	49	6	12			68	1	36	14	3	1							55	3	29	3	3					38	
COAL								1		1				2																						
COMANCHE	3	30	2				35	3	26	1	6	1		37	3	26	4	2								35	1	27	3	3	1				35	
CRAIG		2					2	2						2	4		1										5	2		2		1			5	
CREEK		11		1			12	5	14		1		1	21	3											3	9		1					10		
CUSTER		6	4				10	2						2	1	4	1									6	2								2	
DELAWARE		5	1	7			13								1		1									2	1	2	1	1					5	
GARFIELD	1	5					6	4						4	1	4	3									8	2	6	1	2					11	
GARVIN	1	2			1		4	2						2													4								4	
GRADY		12	1				13	4						4	1	16	6									23	6	6				1			13	
GRANT		1	3				4																													
GREER																																				2
HARMON		1			1		2																													2
HARPER	1	1					2	2						2																						
HASKELL		3	4				7																													
HUGHES								1	1					2	2	1		1								4										
JACKSON		2					2	3	4					7															3		2				5	
JOHNSTON								2	1					3	2											2	2									2
KAY		6	1	1			8	2						2	1	5	1									7	1	5							6	
KINGFISHER								1		1				2	2												2									
KIOWA	1	1					2																						1		2					3
LATIMER		2					2	2						2														1	1							2
LEFLORE	1	5					6	8	1					9	3	7	6	2	1							19	2	1		1					4	
LINCOLN	1	8	1				10	2	3	5	1			11	2	4										6	5		1						6	
LOGAN		6	1	1			8	8	15	1	2			26		6		1								7	4		1						5	
MARSHALL		2					2	3	32					35														4								4
MAYES		2					2	2	4					6	5	4	14									23	6		7						13	
MCCLAIN		2					2								3		2									5	6								6	
MCCURTAIN		12	4				16	1	7		1			9	8	2										1	11	1	7	6	6	1			21	
MCINTOSH	1	9			1		11	10	6					16														1		1					2	
MUSKOGEE	1	8	8	6			23	2	16	48	12	3	1	82		10										10	1	14	1	4					20	

PERSONS INJURED IN CRASHES INVOLVING A SCHOOL BUS by County and Injury Severity

	1994							1995							1996							1997						
	Unknown Injury	O No Injury	C Possible Injury	B Non-Incapacitating Injury	A Incapacitating Injury	K Fatal Injury	Total Injuries	Unknown Injury	O No Injury	C Possible Injury	B Non-Incapacitating Injury	A Incapacitating Injury	K Fatal Injury	Total Injuries	Unknown Injury	O No Injury	C Possible Injury	B Non-Incapacitating Injury	A Incapacitating Injury	K Fatal Injury	Total Injuries	Unknown Injury	O No Injury	C Possible Injury	B Non-Incapacitating Injury	A Incapacitating Injury	K Fatal Injury	Total Injuries
NOBLE									2					2		2												
NOWATA	1	2	1				4									2	3	1										
OKFUSKEE								1	1					2		2												
OKLAHOMA	24	133	22	8	5	1	193	19	152	35	3			209	16	133	42	56	1			248	18	113	47	34	2	214
OKMULGEE		2					2	1	2	1				4		2	1											4
OSAGE	1	2	1	1			5		4					4		6	1	1										2
OTTAWA		8					8		2					2		5		1										1
PAWNEE									2					2			13	2										2
PAYNE		10	5				15		12		3			15	2	7	14	1	1				25		13			13
PITTSBURG		2					2		2					2	1	5												10
PONTOTOC		6					6	2	4		5			11		2												2
POTTAWATOMIE		7	1				8	2	6	1				9	1	9	2	1										6
PUSHMATAHA																												13
ROGER MILLS		1					1																					
ROGERS		18					18		8	25	1			34		9		1										16
SEMINOLE																2	1											19
SEQUOYAH	1	5	2		1		9		4	2		1		7	1	10		1										4
STEPHENS		6	1				7		8	1				9		3	5	3										2
TEXAS		2					2		2					2	1	1												4
TULSA	13	95	15	5	1		129	12	104	53	10	1		180	15	122	45	9	3	1		195	16	129	32	17	1	195
WAGONER		1	3	2	1		7	1	8	6	2			17		10	3	7										21
WASHINGTON	1	20		3			24	1	6	1				8	1	11	1											12
WASHITA																2												3
WOODS									2					2	1	2												2
WOODWARD		2	3				5									2												4
Total	61	517	118	50	16	1	763	53	545	253	75	10	2	938	58	566	214	121	8	2	969	50	503	174	105	9	3	844

School bus crashes are defined as crashes where at least one involved vehicle is a school bus. Injuries shown for these crashes include all involved persons in all vehicles. Counties not shown did not report any crashes involving school buses.

FATALITIES IN SCHOOL BUS CRASHES

YEAR	COUNTY	CAUSE	PERSON TYPE	VEHICLE TYPE	AGE	SEX
1994	OKLAHOMA	OTHER IMPROPER ACT OR MOVEMENT	Pedestrian		7	M
1995	CREEK	INATTENTION	Pedestrian		5	M
1995	MUSKOGEE	UNSAFE SPEED	Driver	Passenger	16	M
1996	TULSA	PEDESTRIAN ACTION	Pedestrian		Unknown	Unknown
1996	MCCURTAIN	UNSAFE SPEED	Driver	Motorcycle	28	M
1997	GRADY	INATTENTION	Pedestrian		14	F
1997	CRAIG	LEFT OF CENTER	Driver	Passenger	31	F
1997	CANADIAN	INATTENTION	Driver	Passenger	17	F

INJURIES INSIDE SCHOOL BUSES INVOLVED IN CRASHES by County and Injury Severity

	1994					1995					1996					1997							
	Unknown	O No Injury	C Possible Injury	B Non-incapacitating Injury	A Incapacitating Injury	Total	Unknown Injury	O No Injury	C Possible Injury	B Non-incapacitating Injury	Total	Unknown	O No Injury	C Possible Injury	B Non-incapacitating Injury	A Incapacitating Injury	Total	Unknown	O No Injury	C Possible Injury	B Non-incapacitating Injury	A Incapacitating Injury	Total
ADAIR		1	1			2		1			1		2		3		5		2	16	10		28
ALFALFA													1	3			4						
ATOKA							1			1													
BEAVER		1				1						1					1						
BECKHAM		1				1						1					1						
BLAINE																		1					1
BRYAN			6	9	1	16	5	1		6	6	7	1			14	5	3					8
CADDO		3				3	1			1	3	4				7							
CANADIAN		2	2			4	1	4	2	10	17	1	14	9			24	3	1	2			6
CARTER		4		1		5		8			8	4				4	1	1					2
CHEROKEE		1				1						1	4	1			6	2	4				6
CHOCTAW		2				2						1	8	2			11						
CIMARRON	1					1						2				2							
CLEVELAND		17	19	1		37	26	2	8	36	20	13	1			34	1	17					18
COAL								1		1													
COMANCHE	1	16				17	14		5	19	1	15	3			19	14	1	2				17
COTTON																							
CRAIG		1				1	1			1	2		1			3	2						2
CREEK		6				6	3	6		1	10	1				1	5						5
CUSTER		4				4	1			1	3					3	1						1
DELAWARE		3		6		9						1				1	1	1		1			3
GARFIELD		3				3	2			2	3	2				5	5		2				7
GARVIN		2				2	1			1								2					2
GRADY		6				6	2			2	8	6				14	4	2					6
GRANT		1				1																	
GREER																		1					1
HARMON		1				1																	
HARPER		1				1	1			1													
HASKELL		2	2			4																	
HUGHES							1			1	1	1				2							
JACKSON		1				1	2	3		5								2					2
JOHNSTON							1			1	1					1	1						1
KAY		3		1		4	1			1	3					3	3						3
KINGFISHER							1			1	1					1							
KIOWA	1					1												1					1
LATIMER		1				1	1			1								1					1
LEFLORE		3				3	3			3	3	3	6			12	1	1					2
LINCOLN		5				5	1	2	5	8	1	2				3	3						3
LOGAN		4				4	5	11	1	17		3				3	2		1				3
MARSHALL		1				1	2	32		34							2						2
MAYES		2				2	1	4		5		3	4	11		18	3		7				10
MCCLAIN		1				1						2				2	3						3
MCCURTAIN		6	4			10	1	4		5	5					5	5	6	5				16

INJURIES INSIDE SCHOOL BUSES INVOLVED IN CRASHES by County and Injury Severity

	1994						1995					1996					1997							
	Unknown	O No Injury	C Possible Injury	B Non-incapacitating Injury	A Incapacitating Injury	Total	Unknown Injury	O No Injury	C Possible Injury	B Non-incapacitating Injury	Total	Unknown	O No Injury	C Possible Injury	B Non-incapacitating Injury	A Incapacitating Injury	Total	Unknown	O No Injury	C Possible Injury	B Non-incapacitating Injury	A Incapacitating Injury	Total	
MCINTOSH	1	5				6		5	6		11								1					1
MUSKOGEE	1	4	5	3		13	2	8	45	10	65		5				5		8		1			9
NOBLE								1			1		1				1							
NOWATA		2				2							2	1			3							
OKFUSKEE								1			1		1				1							
OKLAHOMA	7	75	11		1	94	4	83	15	2	104	5	73	28	44		150	3	65	36	29	1	134	
OKMULGEE		1				1		2			2		1				1		1	1				2
OSAGE	1	1				2		2			2		4				4		1					1
OTTAWA		4				4		1			1		3				3		1					1
PAWNEE								1			1			13	2		15		1					1
PAYNE		4	5			9		6		1	7		5	14		1	20		6					6
PITTSBURG		1				1		1			1	1	2				3		4					4
PONTOTOC		3				3		3		5	8		1				1		1					1
POTTAWATOMIE		4				4	1	3			4		5				5		3					3
PUSHMATAHA																			1	12				13
ROGER MILLS		1				1																		
ROGERS		8				8		5	24	1	30		5				5		7					7
SEMINOLE													1	1			2		2	15				17
SEQUOYAH		3	2			5		3			3	1	5				6		1	2				3
STEPHENS		3				3		4	1		5		1	3	2		6		1					1
TEXAS		1				1		1			1		1				1		2					2
TULSA	3	48	3	2		56	1	57	43	7	108	2	68	29	9		108	5	68	27	13		113	
WAGONER		1	3	1		5		5	3		8		4	3	6		13		7	5				12
WASHINGTON		10				10		4			4	1	6				7		6					6
WASHITA													1				1		1					1
WOODS								1			1		1				1	1						1
WOODWARD		1	3			4							1				1		1					1
Total	16	285	66	24	2	393	13	294	195	56	558	17	313	159	82	1	572	12	282	132	73	1	500	

1997 CRASHES INVOLVING SCHOOL BUSES BY CAUSE

CHANGED LANES UNSAFELY	17
FAILED TO STOP	26
FAILED TO YIELD	50
FOLLOWED TOO CLOSELY	31
IMPROPER OVERTAKING	2
IMPROPER PARKING	1
IMPROPER START FROM	5
IMPROPER TURN	45
INATTENTION	16

1997 CRASHES INVOLVING SCHOOL BUSES BY CAUSE

LEFT OF CENTER	12
NOT KNOWN OR NO IMPROPER ACTION	3
OTHER ACTION	4
OTHER IMPROPER ACT OR MOVEMENT	56
STOPPED IN TRAFFIC LANE	2
UNSAFE SPEED	36
UNSAFE VEHICLE	8
Total	314

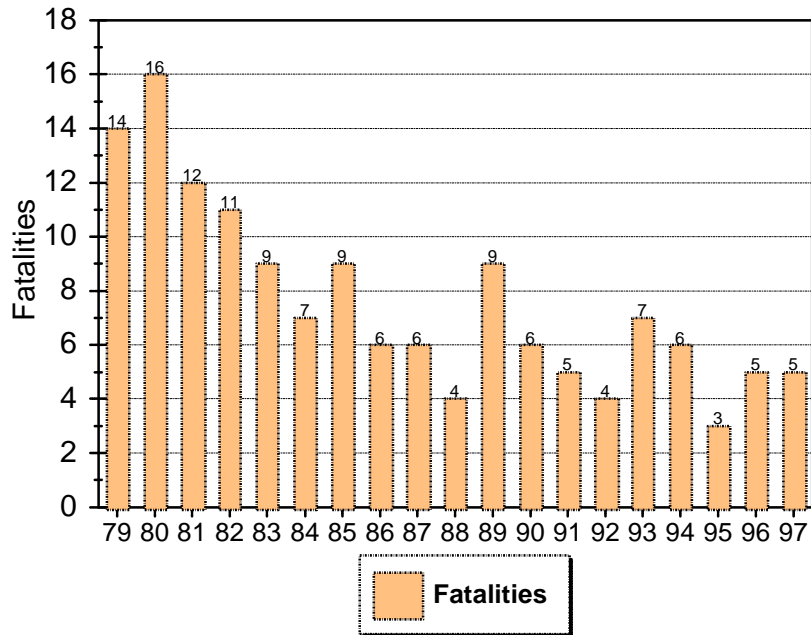
Pedalcyclists

Pedalcyclist by Injury Severity	
Unknown Injury	47
(O) No Injury	15
(C) Possible Injury	112
(B) Non-incapacitating Injury	189
(A) Incapacitating Injury	61
(K) Fatal Injury	5
Total	429

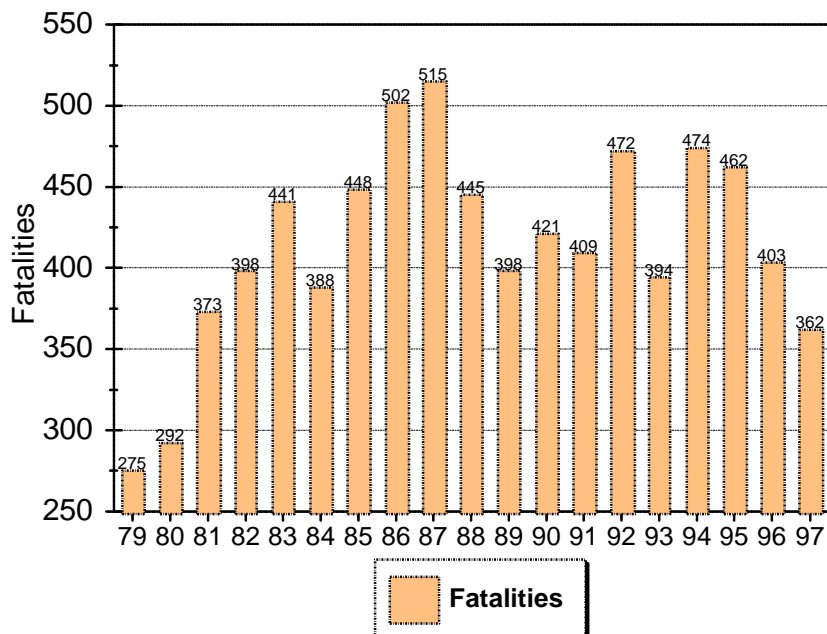
Pedalcyclist Fatalities by Age and Sex			
Age	F	M	Total
5		1	1
6	1		1
14	1		1
26		1	1
48		1	1
Total	2	3	5

Pedalcyclist by Injury Severity & Month							
Month	Unknown Injury	(O) No Injury	(C) Possible Injury	(B) Non-incapacitating Injury	(A) Incapacitating Injury	(K) Fatal Injury	Total
JAN	4		5	7	2	1	19
FEB		1	8	14	10		33
MAR	3	2	5	7	1		18
APR	2	1	11	21	3		38
MAY	3	2	12	28	7		52
JUN	9	4	11	18	7	1	50
JUL	7	2	13	19	7		48
AUG	6	1	14	27	12	2	62
SEP	7		13	24	3	1	48
OCT	2	2	12	12	7		35
NOV	4		7	11	2		24
DEC			1	1			2
Total	47	15	112	189	61	5	429

PEDALCYCLIST Fatalities 1979 - 1997



PEDALCYCLIST Injuries 1979 - 1997



Pedestrian Involvement by Age and Sex				
Age	Unknown	F	M	Total
Age 1-10	4	57	80	141
Age 11-20	2	59	91	152
Age 21-30	1	36	62	99
Age 31-40	1	52	66	119
Age 41-50	2	25	63	90
Age 51-60		12	28	40
Age 61-70		9	19	28
Age 71-80	1	11	8	20
Age 81-90		8	6	14
Age 90+		5	9	14
Unknown	36	5	8	49
Total	47	279	440	766

Pedestrian Fatalities by Age and Sex			
Age	F	M	Total
Age 1-10	1		1
Age 11-20	3	6	9
Age 21-30	3	9	12
Age 31-40	6	7	13
Age 41-50	2	9	11
Age 51-60	1	6	7
Age 61-70	2	6	8
Age 71-80	2	4	6
Age 81-90	1	2	3
Total	21	49	70

Pedestrian Fatalities Under Age 21 by Age and Sex			
Age	F	M	Total
1	1		1
11		1	1
12		2	2
14	2		2
16	1	1	2
17		2	2
Totals	4	6	10

Pedestrian Injuries by Age and Injury Severity

Age	(K) Fatal Injury	(A) Incapacitating Injury	(B) Non-Incapacitating Injury	(C) Possible Injury	(O) No Injury	Unknown Injury	Total
Age 1-10	1	32	66	34	3	5	141
Age 11-20	9	28	63	46	3	3	152
Age 21-30	12	24	39	22		2	99
Age 31-40	13	37	35	30	2	2	119
Age 41-50	11	37	19	19	2	2	90
Age 51-60	7	9	11	9	1	3	40
Age 61-70	8	7	11	1		1	28
Age 71-80	6	10	2	2			20
Age 81-90	3	6	3	1		1	14
Age 90+		4	5	4	1		14
Unknown		7	17	13		12	49
Total	70	201	271	181	12	31	766

Pedestrian Injuries Under Age 21 by Age and Injury Severity

Age	(K) Fatal Injury	(A) Incapacitating Injury	(B) Non-Incapacitating Injury	(C) Possible Injury	(O) No Injury	Unknown Injury	Total
0		7	17	13		12	49
1	1	1	1	1		1	5
2		2	2	2			6
3		1	6	1			8
4		1	10	3	1		15
5		5	10	6			21
6		5	7	2			14
7		6	10	4		1	21
8		4	10	7		1	22
9		4	5	5	1		15
10		3	5	3	1	2	14
11	1	1	2	4			8
12	2	2	8	2	1		15
13		10	13	5	1		29

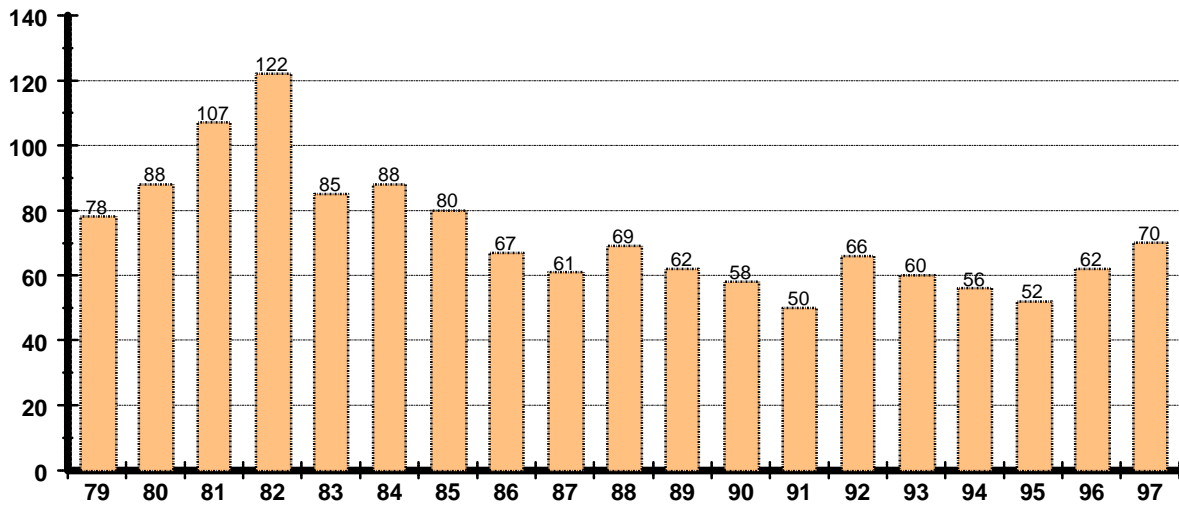
Pedestrian Injuries Under Age 21 by Age and Injury Severity

Age	(K) Fatal Injury	(A) Incapacitating Injury	(B) Non-Incapacitating Injury	(C) Possible Injury	(O) No Injury	Unknown Injury	Total
14	2	2	6	10		1	21
15		3	8	7		2	20
16	2	2	8	5			17
17	2	3	2	1			8
18		2	5	4	1		12
19		2	9	6			17
20		1	2	2			5
Total	10	67	146	93	6	20	342

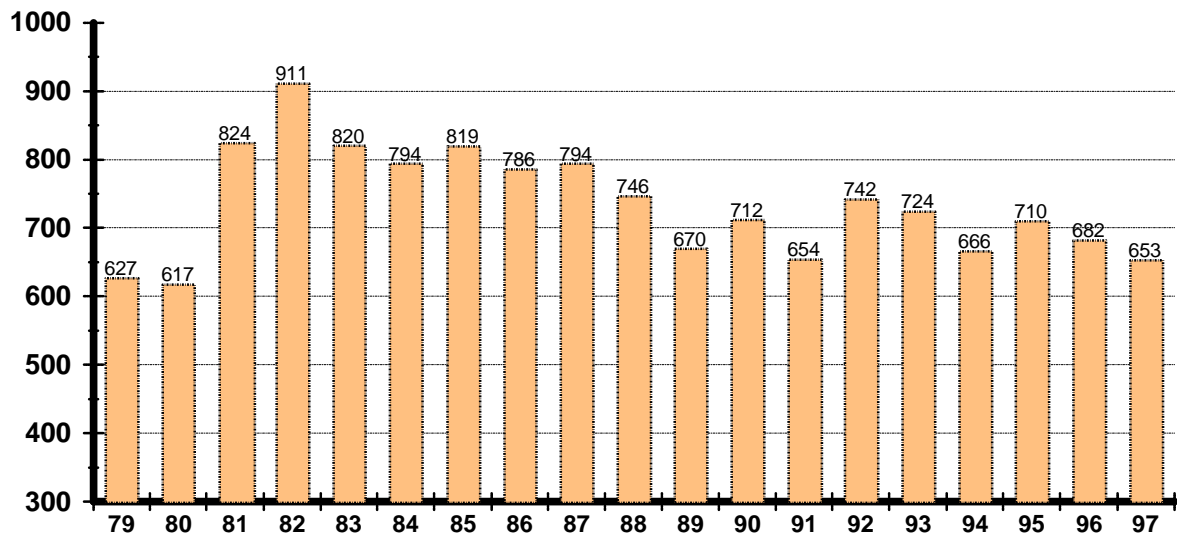
1997 Pedestrians Involved in Crashes by Pedestrian Condition and Pedestrian Action

Pedestrian Condition	Not Stated	Crossing at Intersection	Crossing at Non-Intersection	Crossing at other Crosswalk	Getting on Vehicle	Getting off Vehicle	Walking with Traffic	Walking Against Traffic	Pushing Vehicle	Working on Vehicle	Playing	Other Working	Other	Total
Unknown			6					1					2	9
Not Stated	15	19	46	3		1	12	7		1	5	1	23	133
Normal	57	70	148	16	2	3	37	16	1	16	31	10	46	453
Ability Impaired	5	5	26	2			3	2					7	50
Odor of Alcohol	3	2	19	2		1	3	2	1	1			13	47
Drug Use Indicated		1	1			1		1					1	5
Unknown	2	9	20	2	1		4	5			3		11	57
Very Tired													1	1
Body Defects	1	1					1							3
Other		2	3										3	8
Total	83	109	269	25	3	6	60	34	2	18	39	11	107	766

PEDESTRIAN FATALITIES
1979 - 1997



PEDESTRIAN INJURIES
1979 - 1997



OKLAHOMA TRAFFIC STATISTICS							
Year	Licensed Drivers	Registered Vehicles	Mileage (+000,000)	Crashes	Non-Fatal Injuries	Deaths	Mileage Death Rate
1963	1,314,169	1,385,801	12,532	45,844	20,389	765	5.9
1964	1,371,404	1,439,530	13,183	49,922	21,220	786	5.9
1965	1,393,037	1,507,637	13,654	53,117	21,592	737	5.3
1966	1,424,807	1,579,148	14,745	55,807	22,100	799	5.4
1967	1,447,659	1,634,583	15,089	55,498	21,783	881	5.7
1968	1,489,532	1,714,371	16,188	59,284	20,776	797	4.9
1969	1,536,731	1,772,903	17,114	63,821	21,430	899	4.9
1970	1,651,245	1,861,102	18,142	65,183	20,935	851	4.7
1971	1,690,430	1,965,377	19,021	64,948	21,846	843	4.4
1972	1,716,468	2,094,172	20,410	68,617	21,667	846	4.1
1973	1,795,221	2,214,866	21,647	73,290	22,905	797	3.7
1974	1,732,082	2,320,422	20,933	68,204	20,630	751	3.5
1975	1,756,773	2,371,126	21,980	73,741	20,806	763	3.4
1976	1,815,941	2,484,057	23,499	75,441	24,129	838	3.5
1977	1,872,370	2,568,653	25,397	82,518	24,151	860	3.4
1978	2,020,420	2,729,114	26,441	85,956	23,885	920	3.5
1979	1,971,712	2,885,673	27,079	83,762	22,968	870	3.2
1980	2,016,965	2,717,363	27,331	77,660	24,058	972	3.6
1981	2,047,970	2,890,135	28,242	85,387	34,751	1,004	3.6
1982	2,121,700	3,077,997	29,385	89,004	35,743	1,070	3.6
1983	2,174,350	3,078,010	29,689	84,038	32,232	854	2.8
1984	2,075,309	3,068,010	29,020	81,648	32,672	817	2.8
1985	2,187,408	3,067,681	28,657	81,073	34,255	749	2.6
1986	2,149,439	3,068,022	27,993	75,423	34,462	711	2.5
*1987	2,163,148	4,135,384	27,036	71,651	34,454	611	2.2
*1988	2,225,634	4,173,368	29,862	69,420	35,527	643	2.1
1989	2,292,867	3,119,680	30,119	67,836	35,068	656	2.2
1990	2,288,997	3,100,908	29,335	71,438	38,404	649	2.2
1991	2,283,074	3,139,804	28,844	67,838	38,193	649	2.2
1992	2,311,450	3,208,636	29,638	70,531	45,078	619	2.1
1993	2,324,921	3,257,220	30,497	72,789	47,147	672	2.2
1994	2,343,749	3,302,607	31,674	74,331	48,098	695	2.2
1995	2,357,733	3,361,753	32,070	77,712	51,461	674	2.1
1996	2,334,098	3,588,439	33,874	80,392	53,264	775	2.3
1997	2,564,615	3,422,510	35,528	79,755	52,083	846	2.4

* VEHICLE REGISTRATION STATISTICS FURNISHED BY OKLAHOMA TAX COMMISSION ADJUSTED DUE TO CHANGE IN VEHICLE LAWS.

OKLAHOMA HIGHWAY PATROL CITATIONS 1993 - 1997

TYPE OF TRAFFIC VIOLATION											
Year	Alcohol/ Drugs	Excessive Speed	Financial Responsibility	Driver License	Seat Belt	Reckless Driving	Vehicle Inspection	Failure To Yield	Stop Sign	Other Offenses	Total Citations
1993	12,279	73,436	17,445	15,415	15,988	6,330	3,416	1,528	1,489	26,686	174,012
1994	11,352	63,394	18,907	15,618	16,825	6,520	3,306	1,549	1,501	44,646	183,618
1995	10,374	91,882	19,480	15,663	17,326	6,649	3,051	1,463	1,760	27,388	195,036
1996	10,274	93,911	19,101	16,060	17,753	7,027	3,469	1,590	1,927	27,674	198,786
1997	9,106	82,758	17,995	15,465	15,447	7,017	3,250	1,709	1,890	27,832	182,469

O. S. 47 12-416 Oklahoma Mandatory Seat Belt Usage Act

Effective February 1, 1987

No Law Enforcement Officer Shall Make Routine Stops To Enforce This Act.

Amended November 1, 1997

Removed the language "No Law Enforcement Officer Shall Make Routine Stops to Enforce This Act."

TOTAL COURT CONVICTIONS 1993 - 1997

TYPE OF TRAFFIC VIOLATION											
Year	Alcohol/ Drugs	Excessive Speed	Financial Responsibility	Driver License	Seat Belt	Reckless Driving	Vehicle Inspection	Failure To Yield	Stop Sign	Other Offenses	*Total Convictions
1993	24,582	121,779	36,050	30,690	33,634	10,381	14,880	9,714	17,557	133,798	433,065
1994	23,313	118,036	40,417	36,040	36,664	11,477	16,679	10,654	16,989	167,068	477,337
1995	19,265	139,050	39,744	37,997	35,990	11,912	15,328	10,654	16,381	156,881	483,202
1996	22,204	139,578	38,766	37,939	34,394	12,066	16,346	10,150	15,900	160,299	487,642
1997	19,220	126,179	36,207	39,028	32,220	12,075	17,696	10,279	15,505	166,080	474,489

* These figures represent convictions only and are not indicative of the actual number of citations issued by all Oklahoma law enforcement officials.

Miles of Highway In The State of Oklahoma
STATE, COUNTY, AND CITY MAINTAINED ROADS
1973 - 1996

Year	State Maintained		County Maintained		City Maintained		Turnpikes <i>(Includes 260 Interstate Miles)</i>	TOTAL	
	As Of Dec 31	Rural	Municipal	Paved	Unpaved	Paved			Unpaved
1973		10,567	1,262	16,100	69,432	7,009	2,712	419	107,501
1974		10,610	1,279	16,869	68,434	6,625	2,646	419	106,882
1975		10,775	1,282	17,240	67,844	6,528	2,623	487	106,779
1976		10,903	1,327	17,162	67,864	7,538	2,226	487	107,507
1977		10,906	1,327	18,730	66,336	7,607	2,139	487	107,532
1978		10,986	732	20,204	65,520	7,681	2,087	487	107,697
1979		10,809	741	17,701	63,604	*12,452	*2,965	487	93,342
1980		10,775	750	17,987	63,250	12,282	3,245	487	108,776
1981		10,914	1,254	21,557	64,911	8,593	1,962	487	109,678
1982		10,445	1,138	17,973	63,059	12,609	3,212	486	108,922
1983		10,445	1,138	17,973	63,059	12,609	3,212	486	108,922
1984		11,447	1,542	17,973	62,951	12,796	3,212	486	110,407
1985		11,447	1,542	17,973	62,951	12,796	3,212	486	110,407
1986		11,447	1,542	17,973	62,951	12,796	3,212	486	110,407
**1987		10,971	1,413	20,947	64,012	11,342	1,511	486	110,682
1988		10,971	1,413	20,947	64,012	11,342	1,511	486	110,682
1989		11,135	1,413	23,001	63,933	9,984	1,378	486	111,330
1990		11,135	1,413	23,001	63,933	9,984	1,378	486	111,330
1991		11,588	1,442	23,158	63,341	9,788	1,610	486	111,413
1992		11,588	1,442	23,158	63,341	9,788	1,610	486	111,413
1993		11,129	1,455	23,233	63,836	10,509	1,281	551	111,994
1994		11,116	1,459	23,209	63,692	10,687	1,319	552	112,036
1995		11,121	1,462	23,234	63,587	11,305	1,257	552	112,518
1996		11,114	1,462	23,552	63,265	11,487	1,160	552	112,592

The Information in this chart was obtained from the Planning Division of the Department of Transportation.

* Large change due to improved accuracy in inventory.

**Mileage difference due to change in State Laws.

DRIVER LICENSES BY CLASS AND AGE GROUP - 1997

1997
Oklahoma Traffic
Crash Facts

Age	Class A			Class B			Class C			Class D			Total Drivers	Total I. D.
	Male	Female	Total	Male	Female	Total	Male	Female	Total	Male	Female	Total		
Under 14										5	1	6	6	2,774
14-15										6,146	5,644	11,790	11,790	3,824
16										18,728	17,503	36,231	36,231	3,686
17	4		4							21,916	20,441	42,357	42,361	4,892
18	21		21	15	5	20		1	1	22,247	21,440	43,687	43,729	6,513
19	56		56	50	9	59		2	2	21,219	20,681	41,900	42,017	6,625
20	122	1	123	108	17	125		4	4	21,306	20,940	42,246	42,498	6,940
21	316	6	322	149	16	165	20	6	26	20,292	20,135	40,427	40,940	7,444
22	550	14	564	242	30	272	41	3	44	19,678	20,006	39,684	40,564	7,409
23	765	15	780	347	47	394	52	13	65	19,327	20,302	39,629	40,868	7,346
24	928	25	953	410	79	489	73	16	89	18,596	19,489	38,085	39,616	7,355
25-29	7,040	247	7,287	3,308	543	3,851	551	239	790	93,906	103,845	197,751	209,679	32,436
30-34	10,000	398	10,398	3,666	721	4,387	623	306	929	89,780	105,152	194,932	210,646	22,996
35-39	12,984	575	13,559	4,322	1,006	5,328	738	370	1,108	102,514	122,762	225,276	245,271	19,654
40-44	12,638	686	13,324	4,230	1,041	5,271	718	319	1,037	101,367	120,796	222,163	241,795	14,127
45-49	10,826	635	11,461	3,720	773	4,493	622	271	893	90,969	107,767	198,736	215,583	8,793
50-54	9,203	518	9,721	2,906	573	3,479	479	169	648	79,555	94,204	173,759	187,607	5,917
55-59	7,225	307	7,532	2,204	363	2,567	348	85	433	64,082	76,408	140,490	151,022	3,826
60-64	4,780	106	4,886	1,694	155	1,849	265	56	321	55,920	66,141	122,061	129,117	1,877
65-69	2,214	28	2,242	1,103	67	1,170	185	33	218	52,441	61,088	113,529	117,159	105
70 & Over	753	2	755	567	13	580	156	13	169	117,071	147,445	264,516	266,020	3,298
16 & Over	80,425	3,563	83,988	29,041	5,458	34,499	4,871	1,906	6,777	1,030,914	1,186,545	2,217,459	2,342,723	171,239
TOTAL	80,425	3,563	83,988	29,041	5,458	34,499	4,871	1,906	6,777	1,037,065	1,192,190	2,229,255	2,354,519	177,837

Four operators licenses not included in above chart (2 male, 2 female).

License Class

- A - Any Combination of Vehicles
- B - Any Vehicle with a GVWR of 26,000 or More Pounds. May Tow Vehicle Not in Excess of 10,000 Pounds GVWR. Includes Class C and D Vehicles.
- C - Any Vehicle or Combination of Vehicles Except Class A & B Which is Required to be Placarded for Hazardous Materials or Designed for 16+ Occupants and Class D Vehicle
- D - All Vehicles or Combination of Vehicles Except A, B & C

License Endorsements		
Endorsement	Description	Total
N	Tank	19,421
T	Double/Triple	29,758
H	Hazardous Material	9,812
P	Passenger	30,216
X	Endorsements N & H	28,091
M	Motorcycle	128,983

Licenses Issued	
License on File	3,307,993
Current License	2,354,523
Expired License	285,032
Suspended License	56,206
Current I.D.	177,837

License Restrictions	
Restriction	Total
A	3,548
E	4,744
K	1,031
V	14,616
O	1,583
9	37,894
8	5,122
Other	628,276

LICENSE RESTRICTIONS

- 0 - Motorcycle Only - If under 16, 125cc Motorcycle or Motor Scooter 4:30 a.m. to 9:00 p.m.
- 1 - Corrective Lenses
- 2 - Left Outside Rearview Mirror
- 3 - Restriction #1 or #2
- 4 - Automatic Transmission
- 5 - Turn Indicators, Power Steering or Steering Knob
- 6 - Food, Fruit or Candy Within Reach of Driver
- 7 - Adequate Artificial Limbs
- 8 - Detailed Restrictions - Inquire Oklahoma Driver License File
- 9 - Accompanied by Licensed Driver Over 18 in Front Seat

- E - When Operating Passenger Bus, Restricted to Class B or C
- K - CDL Interstate Only
- R - Ignition InterLock Device
- V - Vehicle Without Air Brakes

A - Regardless of Age, When Operating a Motorcycle Must Be in View of Licensed Driver 21 Yrs of Age