

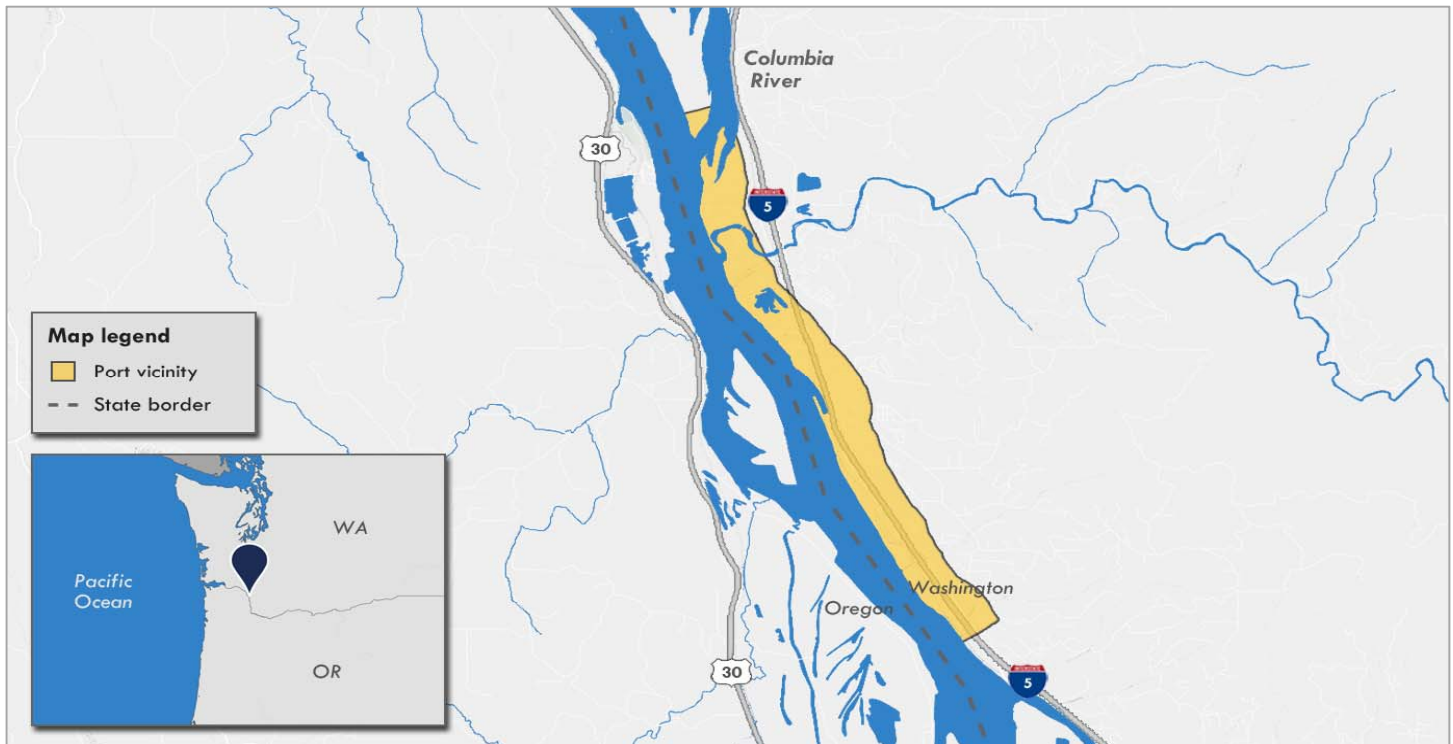
PORT OF KALAMA

Washington

Pacific Coast

Port list:

Dry bulk



Port vicinity map illustrates area facilities.

The Lewis & Clark Bridge (187 ft), not shown, may limit vessels serviced at the Port of Kalama.

Port overview

The Port of Kalama complex is approximately five miles long and is located along the Columbia River in southwest Washington, about 30 miles from Portland, Oregon. The Port of Kalama is governed by a three-member port commission.

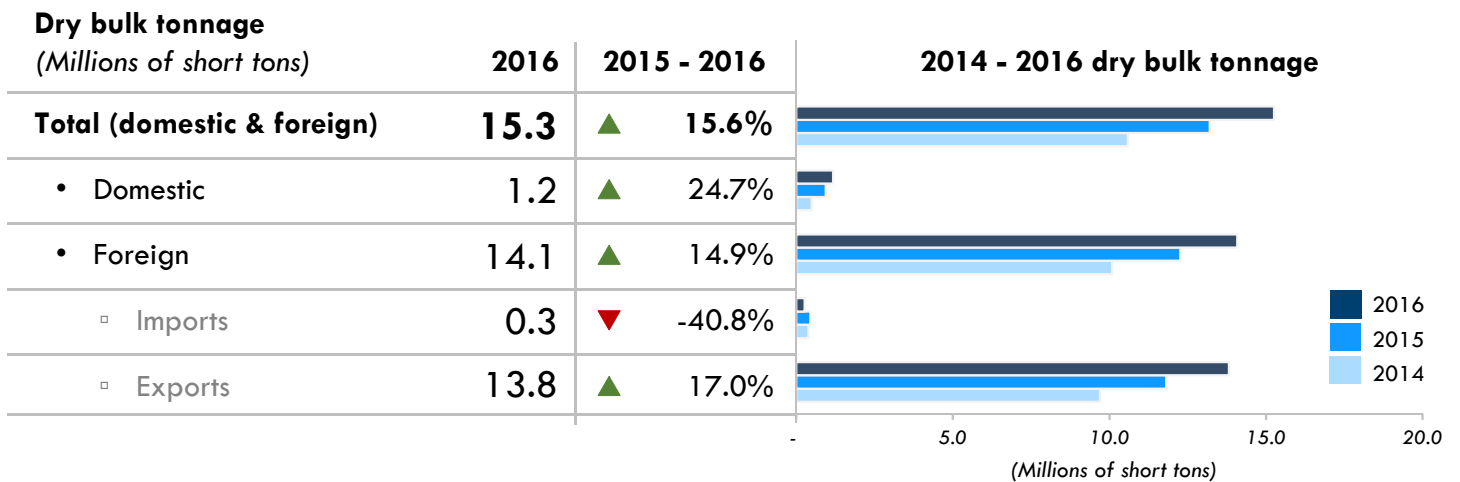
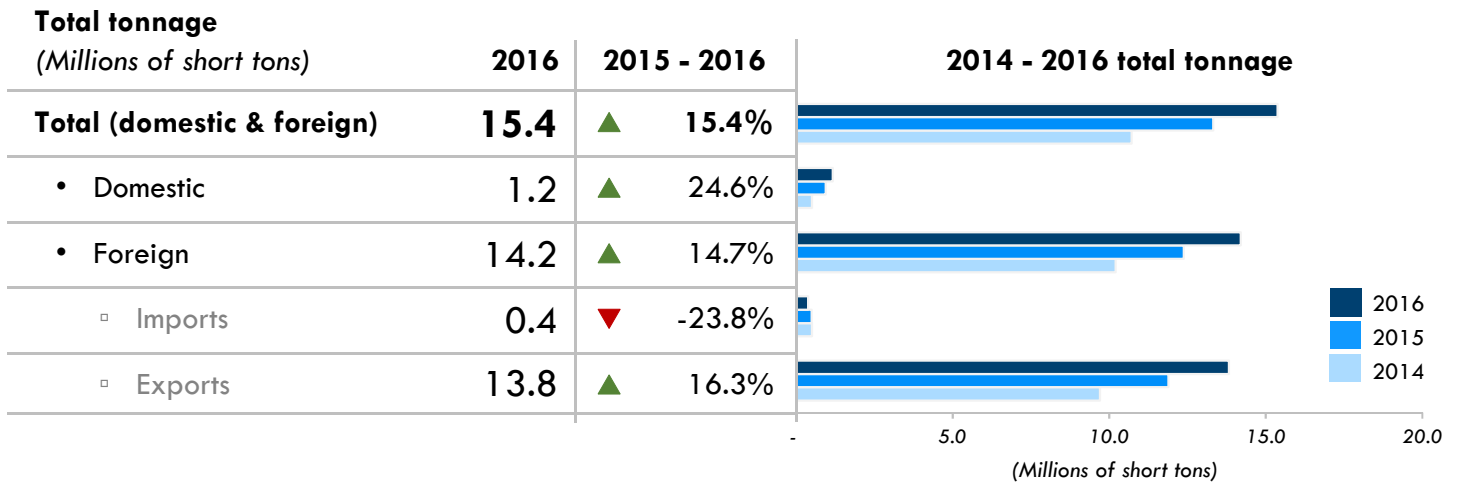
The port consists of five marine terminal facilities. The port's public terminals include TEMCO, RSG Forest Products, and the North Port Marine Terminal, which handles general cargo such as steel products for a port-owned steel mill. Other, private terminals handle liquid bulk (primarily toluene, an industry solvent), dry bulk (e.g., soybeans, wheat, corn, sorghum grains, and lumber), and break-bulk. Barges handle some of these materials.

Two Class I railroads serve the port with railyards adjacent.

PORT OF KALAMA (CONTINUED)

THROUGHPUT

Cargo

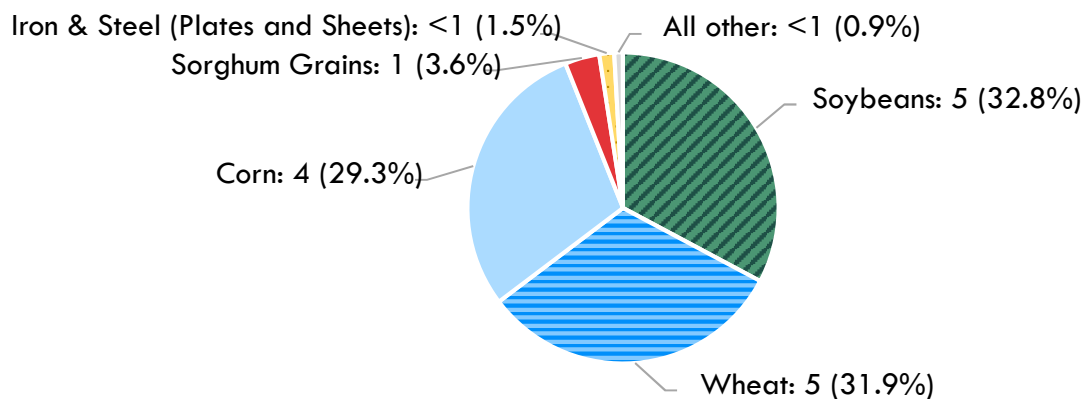


PORT OF KALAMA (CONTINUED)

THROUGHPUT

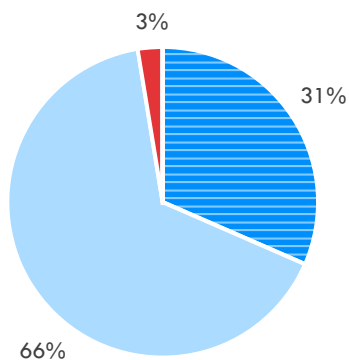
Commodities

Tonnage Millions of short tons (percent of total)



Vessel calls

% of total vessel calls



By vessel type

| | 2016 | 2015 - 2016 |
|---|------------|----------------|
| Total vessel calls | 484 | ▲ 27.1% |
| Container vessel | 0 | N/A |
| Average TEU per container vessel | N/A | N/A |
| Dry bulk vessel | 153 | ▲ 10.1% |
| Average dry bulk tonnage (short tons) per dry bulk vessel | 92,347 | |
| Dry bulk barge | 319 | ▲ 37.3% |
| Average dry bulk tonnage (short tons) per non-dry bulk vessel | 3,682 | |
| Other freight vessel | 13 | ▲ 31.6% |
| Other freight barge | 0 | N/A |

PORT OF KALAMA (CONTINUED)

CAPACITY

Non-container terminals

The Port of Kalama complex includes the following terminals: North Port Marine Terminal, TEMCO LLC, and RSG Forest Products terminals.

Channel depth

| | | | |
|-------------------------------|------|--|------|
| Authorized channel depth (ft) | 55.0 | Maximum depth of approach channel (ft) | 42.0 |
|-------------------------------|------|--|------|

NOTES: “N/A” designates a metric that does not apply for this port. Vessel call numbers might not add to 100% due to rounding.

SOURCES: Port Overview/Terminals—Port of Kalama website, available at <http://portofkalama.com/>, including terminal websites accessed through the main port website, as of November 2017.