

The logo for the Joint Advanced Materials and Structures Center of Excellence (JAMS) is displayed at the top center. It consists of the letters 'JAMS' in a bold, blue, textured font. Below the text are two thick, curved lines: a yellow one on top and a blue one on the bottom, both curving from left to right.

JAMS

Methods for the Evaluation of the Fitness of Fiber Reinforced Composite Surfaces for Subsequent Adhesive Bonding

Bill Stevenson
Dept. of Chemistry
Wichita State University



The Joint Advanced Materials and Structures Center of Excellence

Methods for the Evaluation of the Fitness of Fiber Reinforced Composite Surfaces for Subsequent Adhesive Bonding

- **Motivation and Key Issues**
- With user safety in mind, the FAA has determined to coordinate and lead an effort to improve our understanding of current composite bonding methodology in the commercial aerospace and scientific community, with special emphasis on surface preparation and characterization prior to the bonding event.
- **Objectives**
- To develop nondestructive analytical techniques for application to the analysis of prebonded CF reinforced composite surfaces on the shop floor that can be used to support a decision to “go ahead” and bond the part or “stop” and have it re-cleaned, dried, or cured further prior to bonding
- To integrate these techniques of analysis into the joint FAA/NIAR scarf repair project to develop insights into the influence of surface contaminants on the integrity of composite patches for very thick CF reinforced composite laminates to be used in primary load bearing applications in next generation aircraft
- **Approach - Techniques of analysis**
- Contact angle measurement - Overall fitness for bonding
- Near Infrared Spectroscopy – Water
- Laser desorption – mass spectroscopy - Specific surface contaminants such as jet fuel, hydraulic oil, etc.

FAA Sponsored Project Information

- **Principle Investigators & Researchers**
 - William Stevenson, Irish Alkalen, Laura Stevenson, Michael VanStipdonk, Dennis Burns (Chemistry, Wichita State University) Chemical analysis
 - Lamia Salah, John Tomblin (National Institute for Aviation Research – NIAR, Wichita State University) Sample design, fabrication, mechanical testing, design of and interpretation
 - Charles Yang (NIAR & Aeronautical Engineering, Wichita State University) Finite element analysis
- **FAA Technical Monitor**
 - Curt Davies
- **Other FAA Personnel Involved**
 - Larry Ilcewicz
- **Industry Advisory**
 - Michael Borgman, Robert Bohaty

Water by near IR Spectroscopy

- Dissolved – entrained water in the composite will migrate to the surface and produce a poor bond.
- Even if the surface is dried by transient heating, water can migrate from the bulk to the surface to cause a poor bond
- Infrared spectroscopy can detect water if signals from water and hydroxyl groups in the resin can be separated – **near infrared spectroscopy**
- Instrument makers will custom build near IR configurations for the shop floor

Methods for the Evaluation of the Fitness of Fiber Reinforced Composite Surfaces for Subsequent Adhesive Bonding

- **Phase I (Dec 2005) goal**
- **To have a working Integrating Sphere diffuse reflectance Near IR system in place to analyze surface treated composite samples for water content**

Progress: Completed

- **Integrating sphere module was custom built to fit Nexus spectrometer.**
- **Hardware and software “glitches” were solved.**
- **Preliminary testing indicated that water in high performance composites containing Toray T-800 fibers can be observed by this method**

Methods for the Evaluation of the Fitness of Fiber Reinforced Composite Surfaces for Subsequent Adhesive Bonding

Phase II (2006) goals

- To produce calibration curves relating spectrum to water content in epoxy resin based composite systems

Progress: Completed

- Calibration curves have been constructed for...
- A medium performance epoxy resin
- A high performance epoxy resin
- A carbon fiber reinforced composite containing the same high performance epoxy resin

Methods for the Evaluation of the Fitness of Fiber Reinforced Composite Surfaces for Subsequent Adhesive Bonding

Phase III (2006-07) goals

To integrate this technique into the joint FAA/NIAR scarf repair project to characterize “conditioned” repair surfaces made from high performance composite prior to repair layup for **water content** at and near the scarfed surface

Progress: To commence this summer

Background Info

Combination stretching/deformation band
@ 5215cm^{-1} $\nu_{\text{assym}} + \delta_{\text{in plane}}$

Pro's

Free of interference from resin hydroxyls

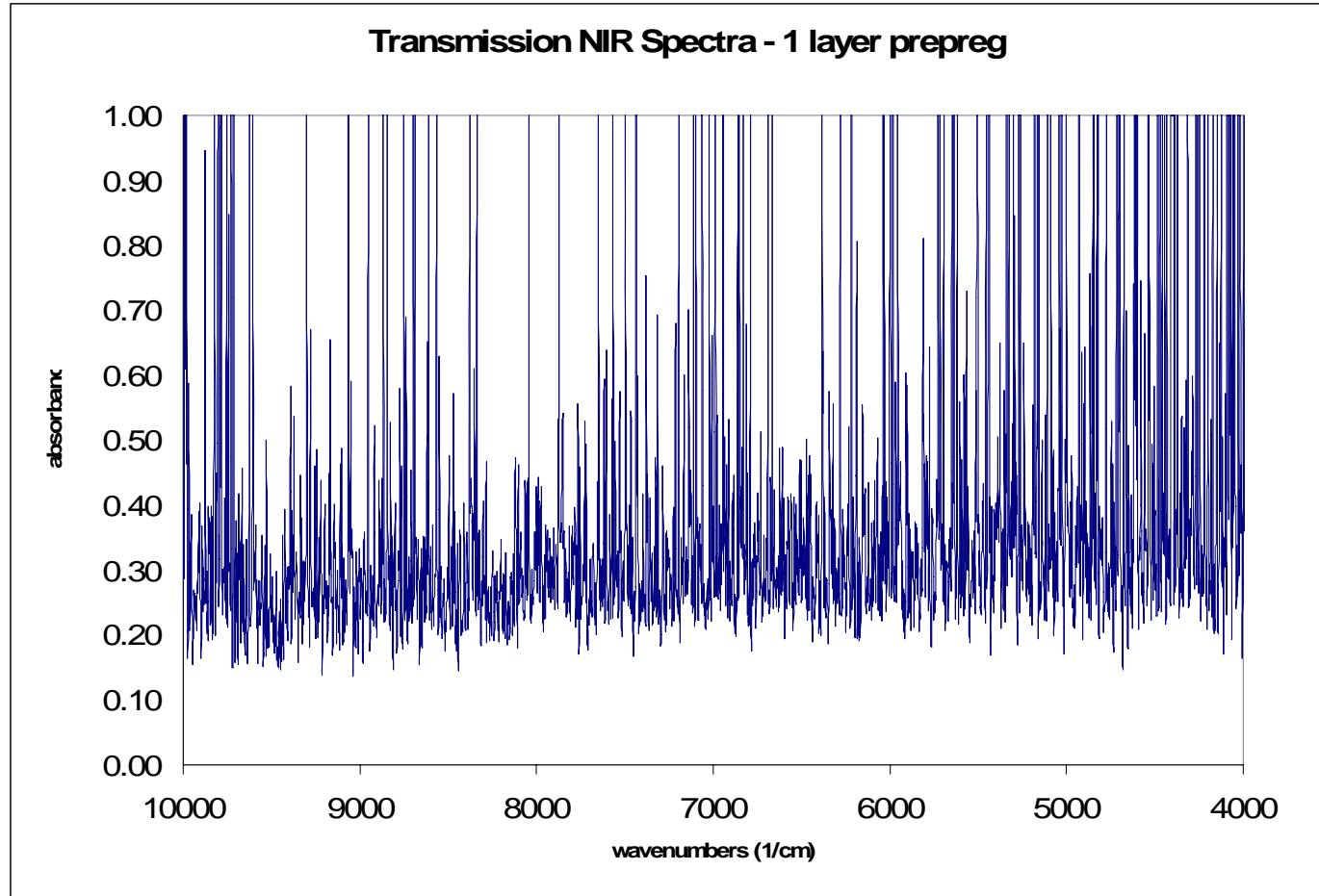
Quantitative measure of water

Con's

Little info on state of water in resin

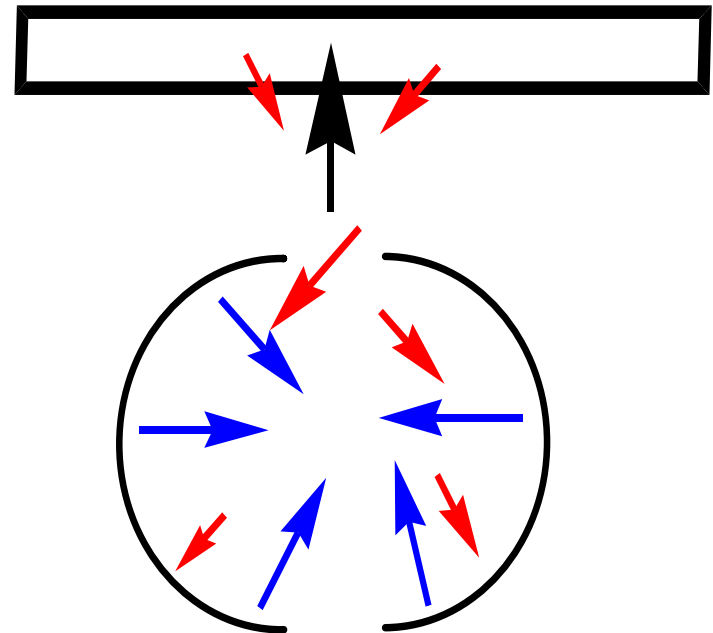
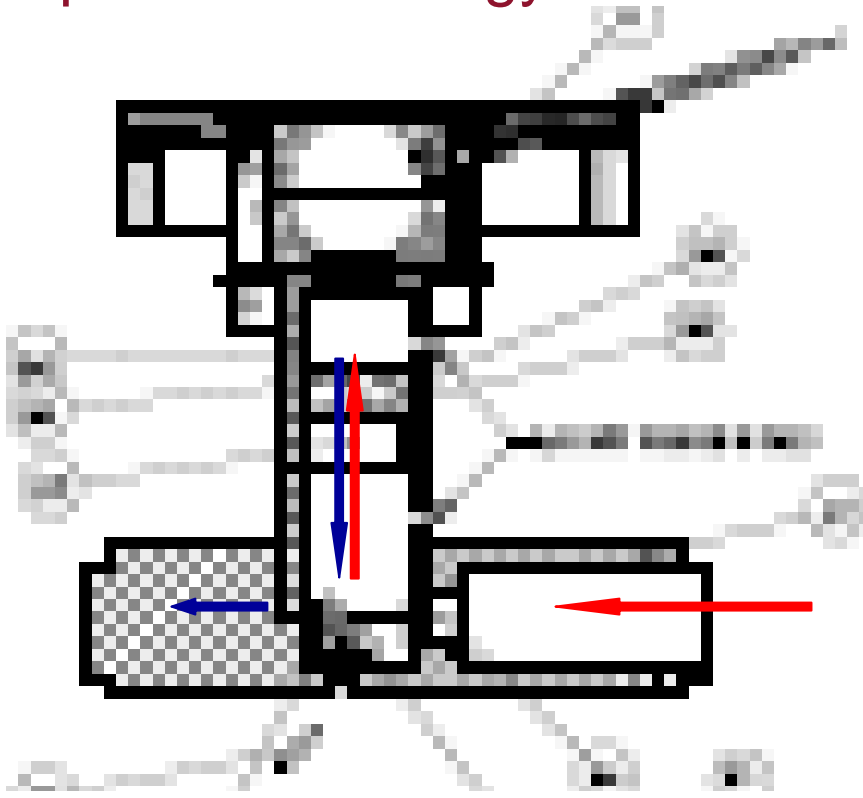
Methods for the Evaluation of the Fitness of Fiber Reinforced Composite Surfaces for Subsequent Adhesive Bonding

Unfortunately near IR spectroscopy of composites does not work in transmission



Methods for the Evaluation of the Fitness of Fiber Reinforced Composite Surfaces for Subsequent Adhesive Bonding

Diffuse reflectance Near IR spectroscopy using integrating sphere technology



Methods for the Evaluation of the Fitness of Fiber Reinforced Composite Surfaces for Subsequent Adhesive Bonding

TE Nexus
with
Integrating
sphere
module



Methods for the Evaluation of the Fitness of Fiber Reinforced Composite Surfaces for Subsequent Adhesive Bonding

A composite sample placed on top of the integrating sphere module and ready for analysis



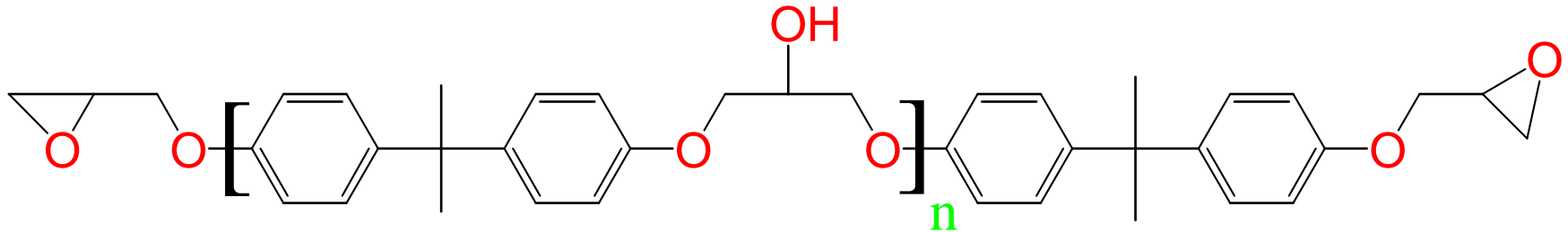
Methods for the Evaluation of the Fitness of Fiber Reinforced Composite Surfaces for Subsequent Adhesive Bonding

Procedure for resin samples

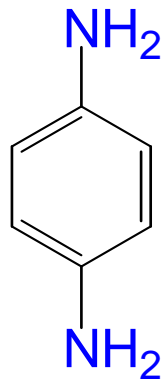
- (1). Resin cured between steel plates
- (2). Near IR spectrum acquired
- (3). Weighed then exposed to water vapor @ 140 °F
- (4). Reweighed then near IR spectrum acquired
- (5). Dried @ 50°C, reweighed, and near IR spectrum acquired

Methods for the Evaluation of the Fitness of Fiber Reinforced Composite Surfaces for Subsequent Adhesive Bonding

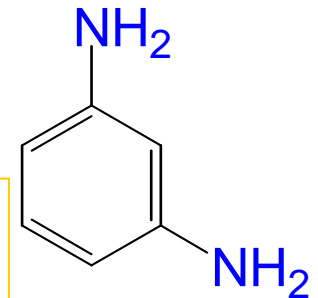
Cured 2h at 120°C then 2h at 180°C and stored in a dessicator



Water in a stoicheometrically balanced mid performance epoxy resin



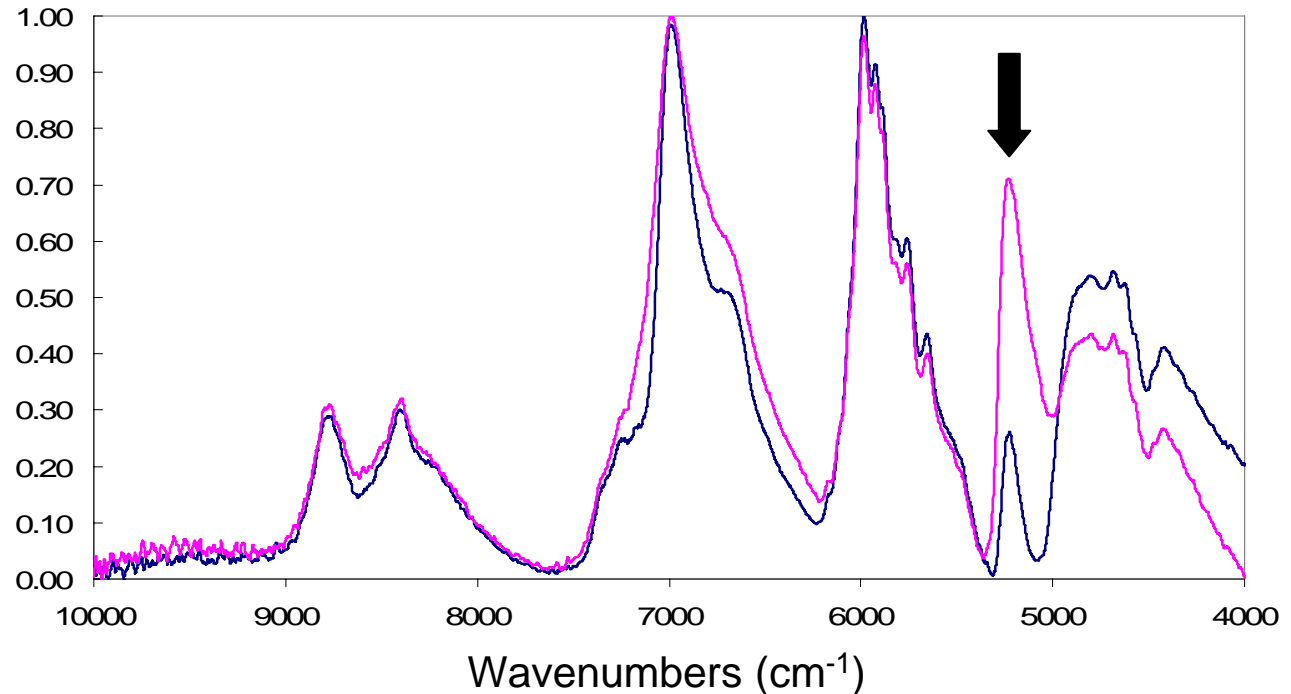
Curative - PPDA : MPDA
1:1 mole : mole



Methods for the Evaluation of the Fitness of Fiber Reinforced Composite Surfaces for Subsequent Adhesive Bonding

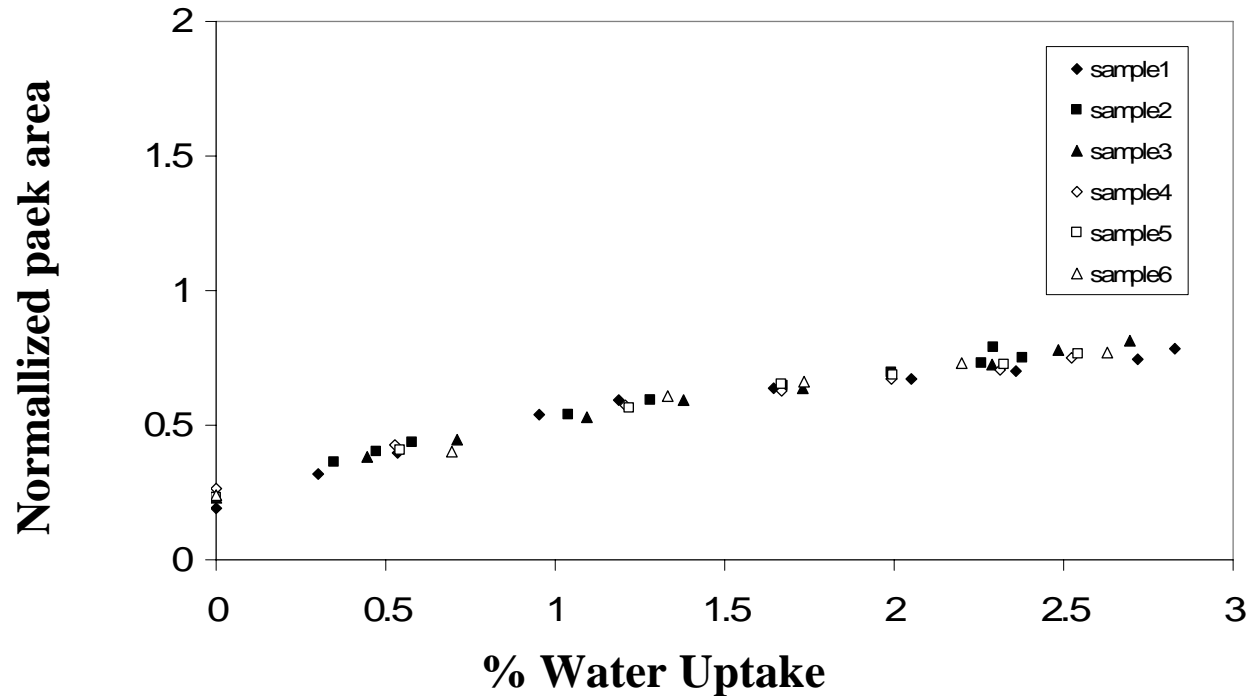
Near IR spectra of mid performance DGEBA epoxy resin before (blue) and after (wine) water absorption. The water absorption (overtone) is denoted by the arrow.

NIR (integrating sphere) Spectra - resin825-MPDA-PPDA dry and wet



Methods for the Evaluation of the Fitness of Fiber Reinforced Composite Surfaces for Subsequent Adhesive Bonding

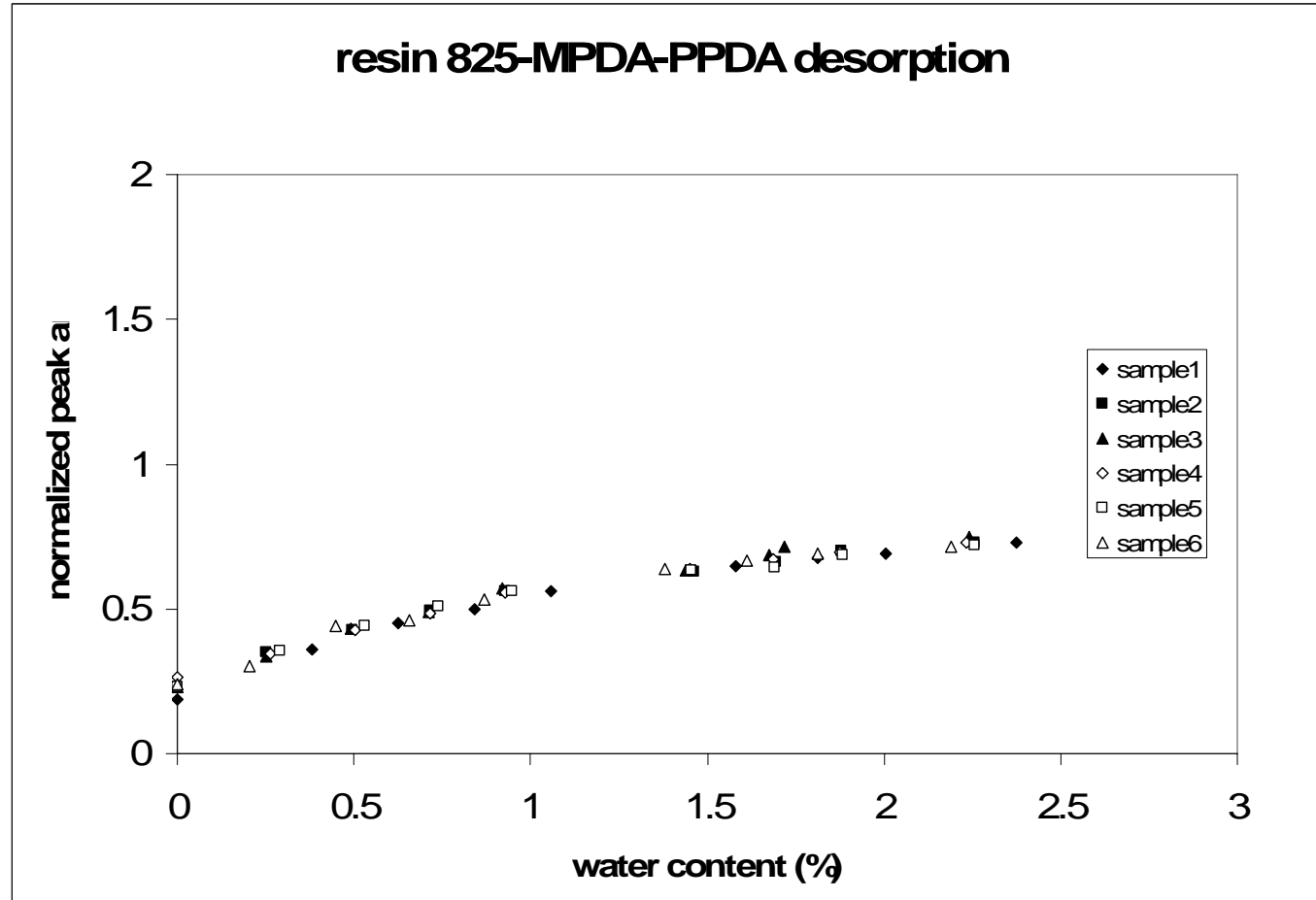
resin825-PPDA-MPDA water uptake



A plot of normalized water absorbance at 5215 cm^{-1} , versus % water uptake for this resin system

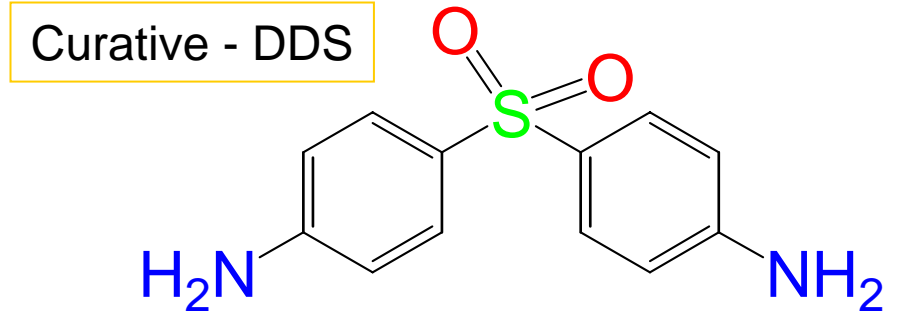
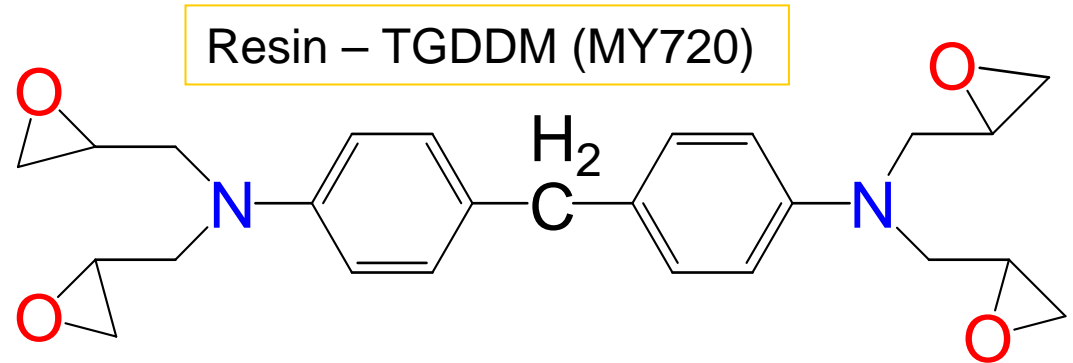
Methods for the Evaluation of the Fitness of Fiber Reinforced Composite Surfaces for Subsequent Adhesive Bonding

Spectra were also obtained during desorption (drying) cycles @ 50°C



Methods for the Evaluation of the Fitness of Fiber Reinforced Composite Surfaces for Subsequent Adhesive Bonding

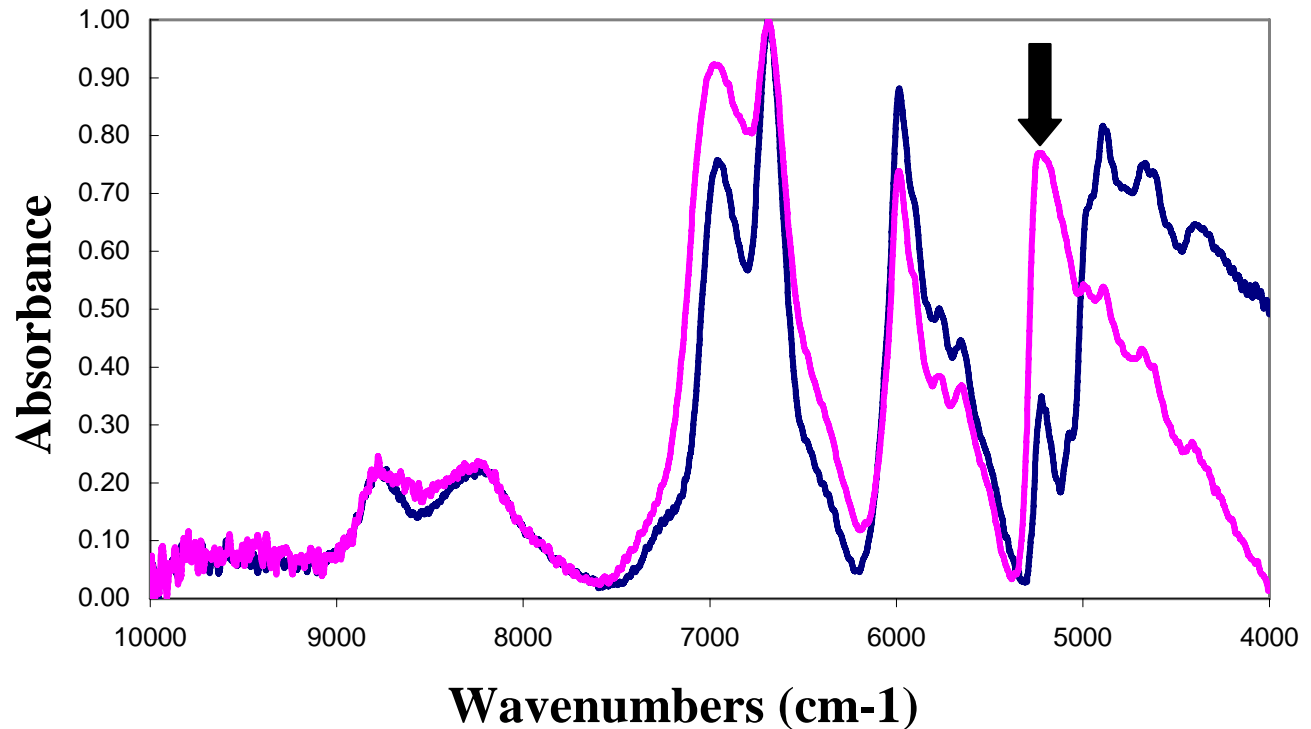
Water in a stoichiometrically balanced high performance epoxy resin formulated to “mimic” 934 resin



Resin cured between steel plates 2h at 140°C then 4h at 200°C

Methods for the Evaluation of the Fitness of Fiber Reinforced Composite Surfaces for Subsequent Adhesive Bonding

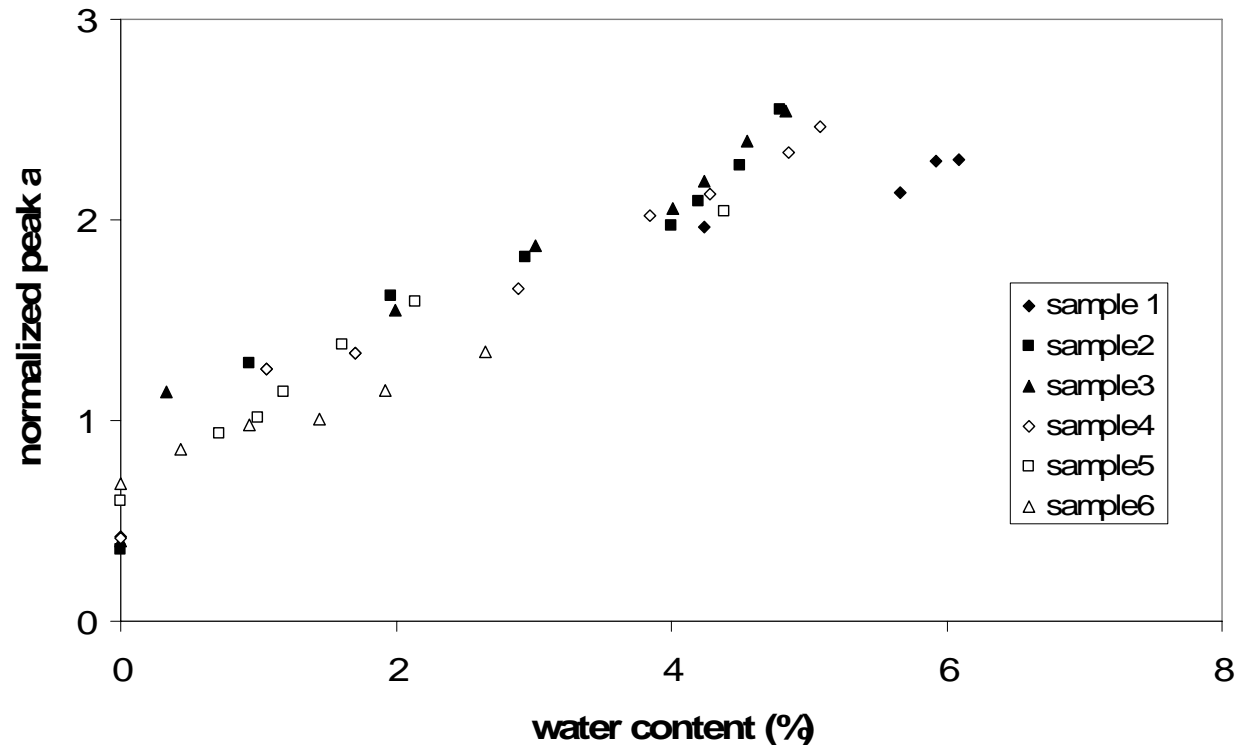
NIR (integrating sphere) Spectra - my720-dds resin dry and wet



Near IR spectra of a high performance epoxy resin containing MY720 epoxy resin and DDS curative before (blue) and after (wet) water absorption. The water absorption (overtone) is denoted by the arrow

Methods for the Evaluation of the Fitness of Fiber Reinforced Composite Surfaces for Subsequent Adhesive Bonding

my720-dds resin water uptake

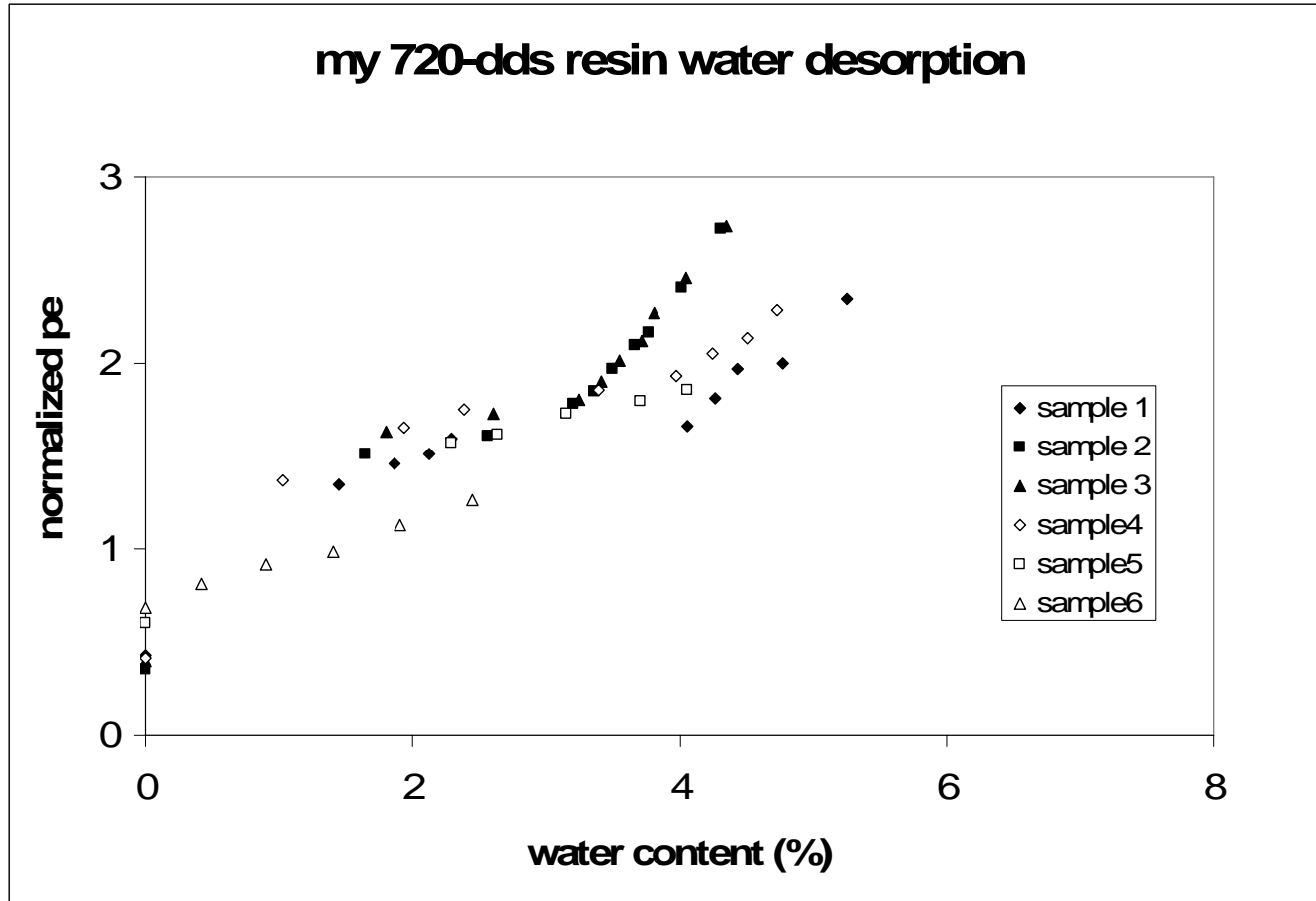


A plot of normalized water absorbance at 5215 cm-1 versus % water uptake for the MY720-DDS resin system

Methods for the Evaluation of the Fitness of Fiber Reinforced Composite Surfaces for Subsequent Adhesive Bonding



Spectra were also obtained during desorption (drying) cycles @ 50°C



Conclusions

- More water is absorbed by the high performance resin than the mid performance resin (free volume)
- More scatter with the high performance resin than with the mid performance resin
- Reproducible calibration curves

Methods for the Evaluation of the Fitness of Fiber Reinforced Composite Surfaces for Subsequent Adhesive Bonding

Water in an epoxy resin – carbon fiber based composite

Fibers – woven T300 carbon

Resin – generic “934” high performance resin

Details of cure – double vacuum bagged and cured in a forced air oven, 2h at 120°C followed by 2h at 200°C

Component	Percent Composition by Mass	Methods
Carbon Fiber	62.0 – 63.1%	solvent extraction & HNO ₃ resin burn off
TGDDM (MY720 epoxy resin)	22%	¹ H NMR spectroscopy, prep TLC
DDS (amine curative)	14%	¹ H NMR spectroscopy, prep TLC
BF ₃ (catalyst)	< 1 %	¹¹ B & ¹⁹ F NMR spectroscopy
Acetone solvent	< 1%	mid IR & ¹ H NMR spectroscopy

Methods for the Evaluation of the Fitness of Fiber Reinforced Composite Surfaces for Subsequent Adhesive Bonding

Strength

Works well with fiber reinforced composite on resin rich vacuum bag and peel ply surfaces

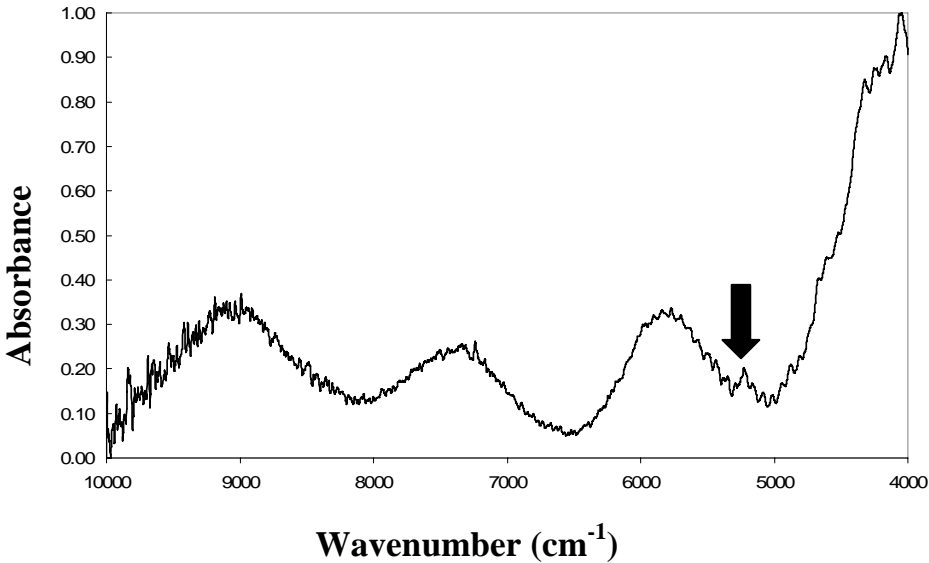
Weakness

Does not work well on resin poor (tool) surfaces

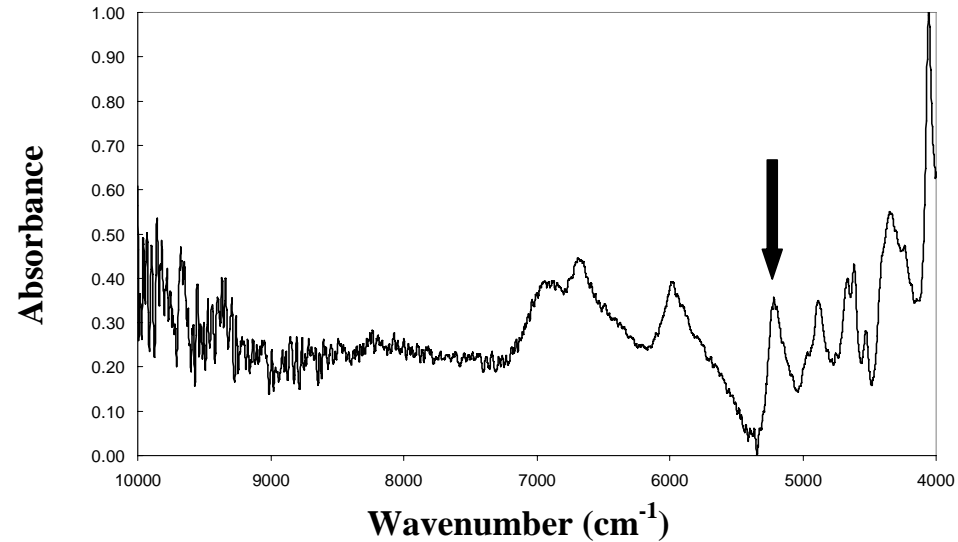
Methods for the Evaluation of the Fitness of Fiber Reinforced Composite Surfaces for Subsequent Adhesive Bonding

Near IR spectra of tool face (left) and bag face (right) of composite. “Bag face” spectra can be normalized

NIR (integrating sphere) Spectra - generic 934 composite tool face



NIR (integrating sphere) Spectra - generic 934 composite bag face



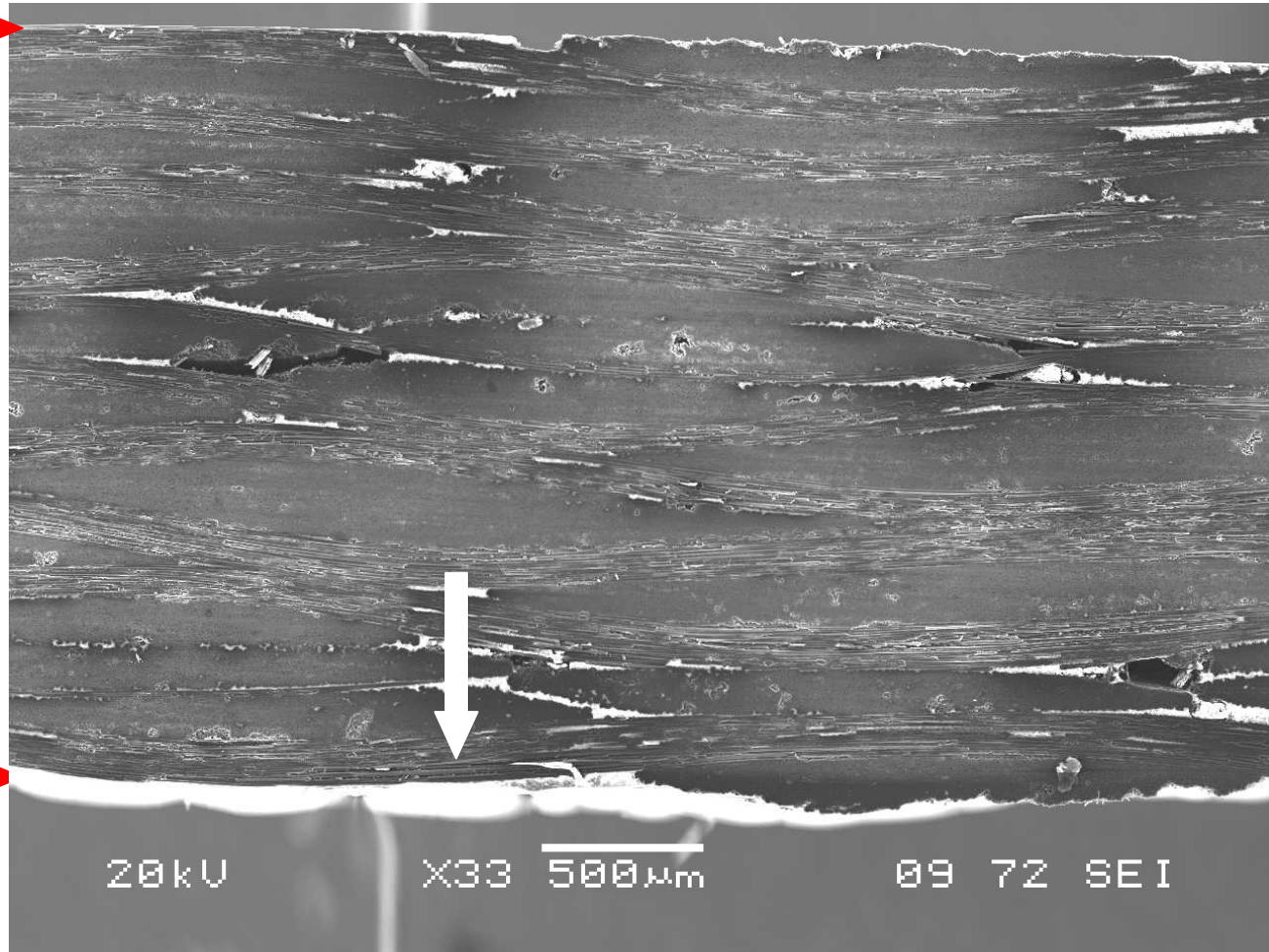
Methods for the Evaluation of the Fitness of Fiber Reinforced Composite Surfaces for Subsequent Adhesive Bonding

Tool face →



Resin rich regions are overexposed due to charging

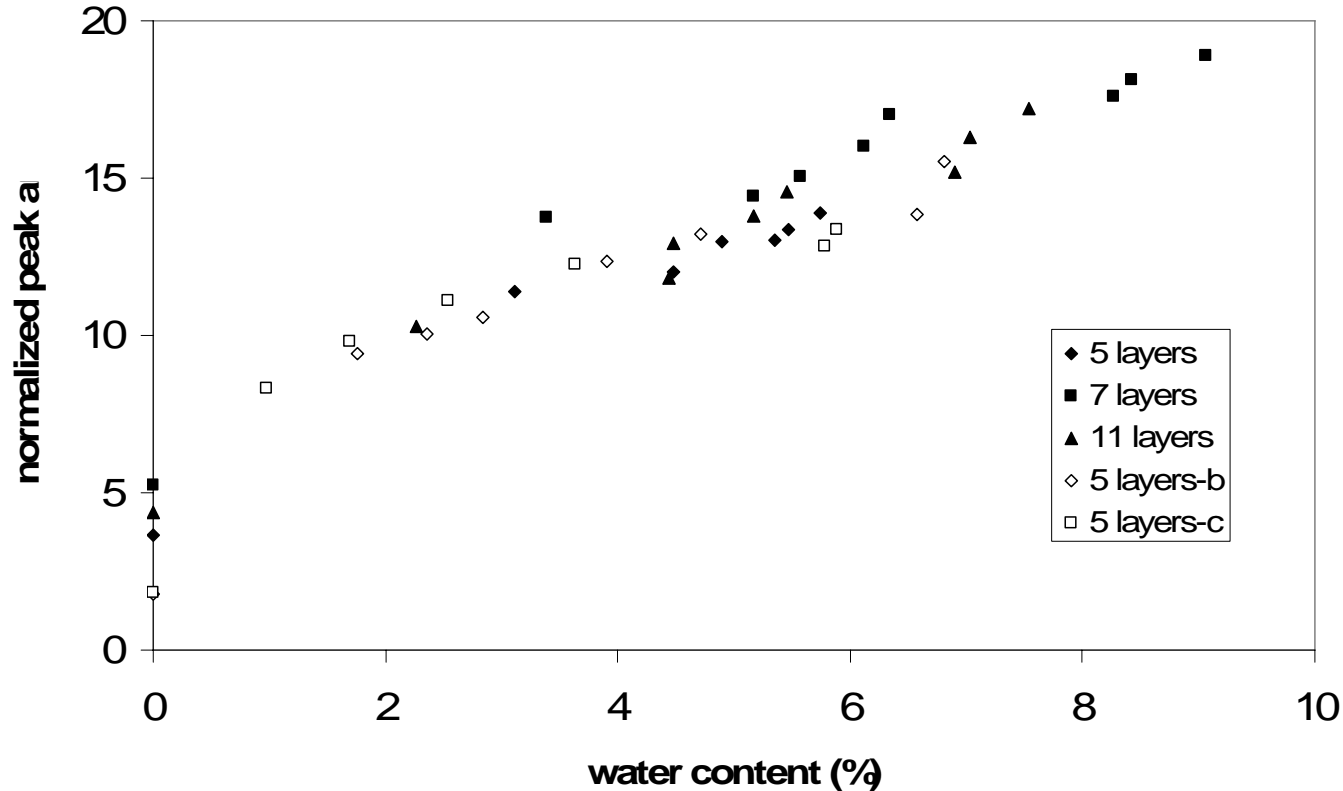
Bag face →



Methods for the Evaluation of the Fitness of Fiber Reinforced Composite Surfaces for Subsequent Adhesive Bonding

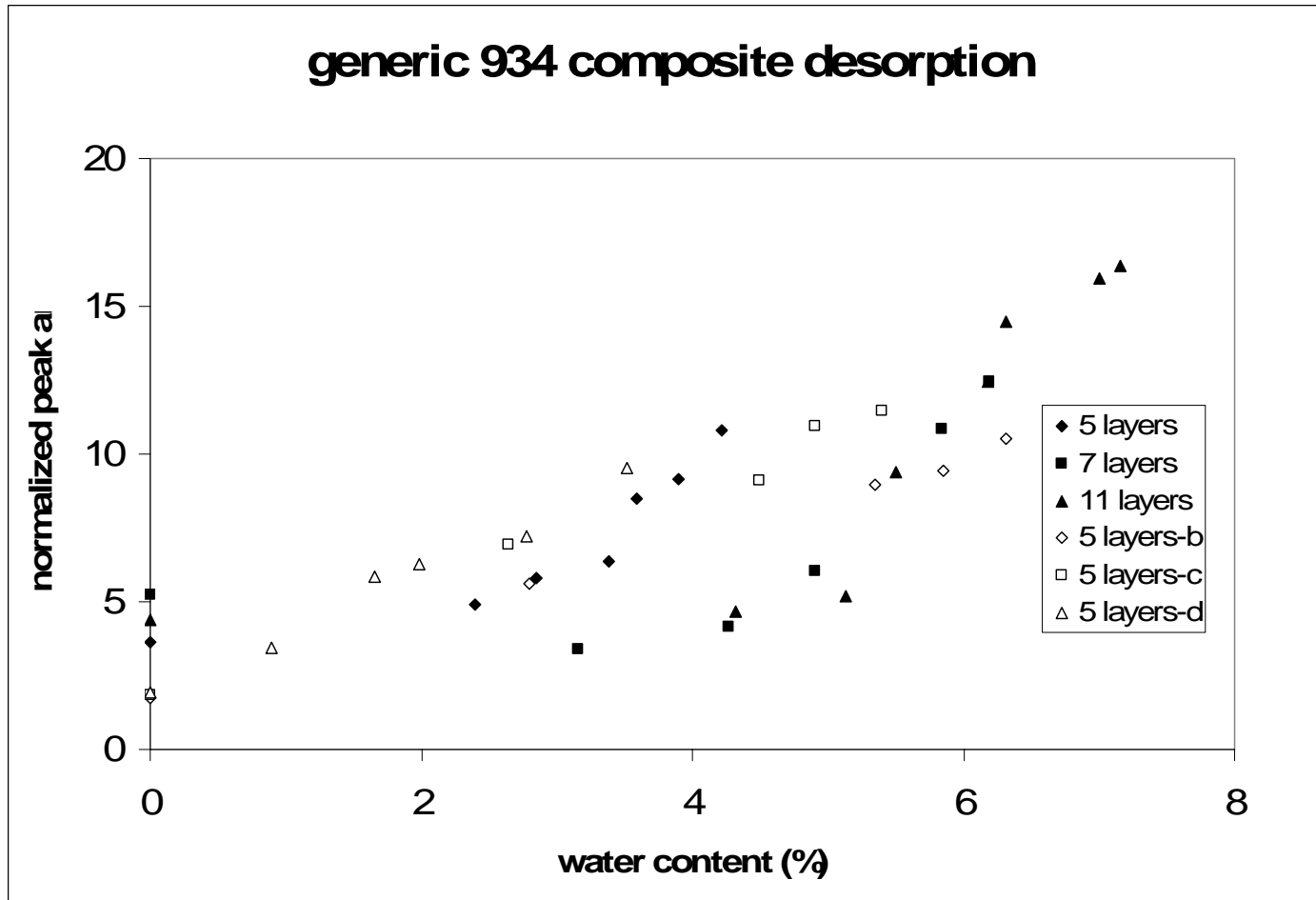


generic 934 composite water uptake



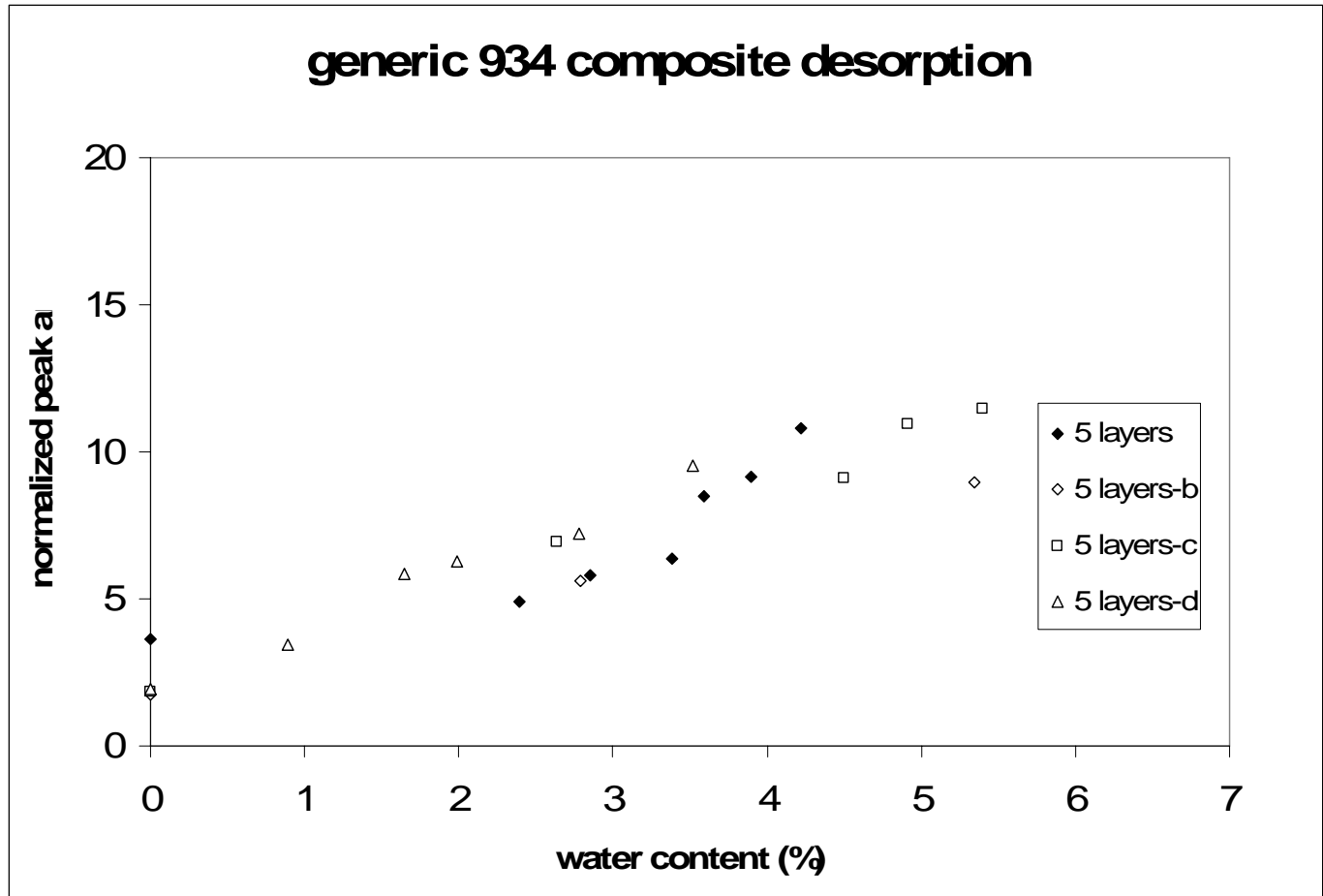
A plot of normalized water absorbance at 5215 cm^{-1} versus % water uptake measured at the bag face of a composite made using generic “934” resin and carbon fiber fabric

Methods for the Evaluation of the Fitness of Fiber Reinforced Composite Surfaces for Subsequent Adhesive Bonding



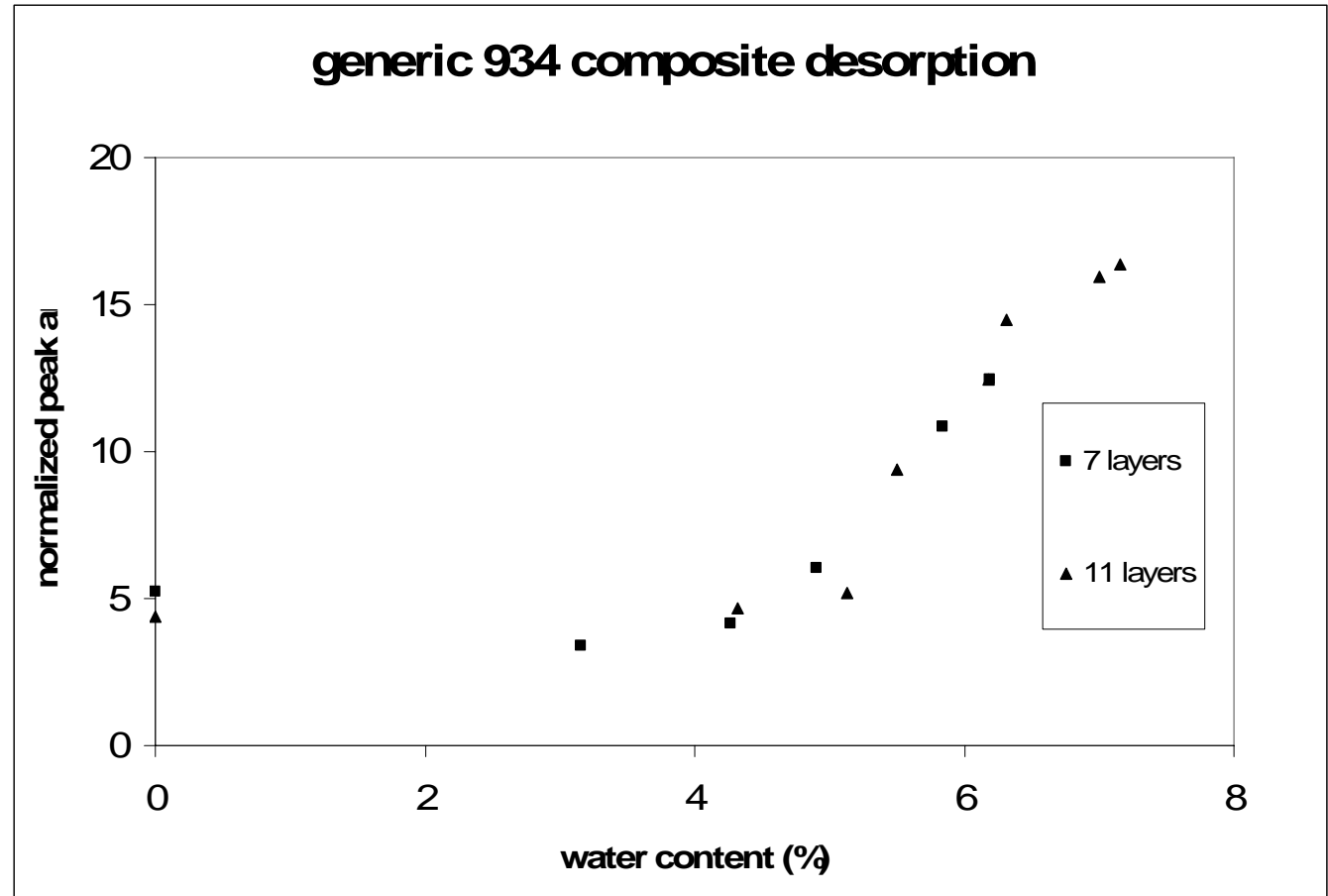
Methods for the Evaluation of the Fitness of Fiber Reinforced Composite Surfaces for Subsequent Adhesive Bonding

5
layers



Methods for the Evaluation of the Fitness of Fiber Reinforced Composite Surfaces for Subsequent Adhesive Bonding

7 & 11
 layers

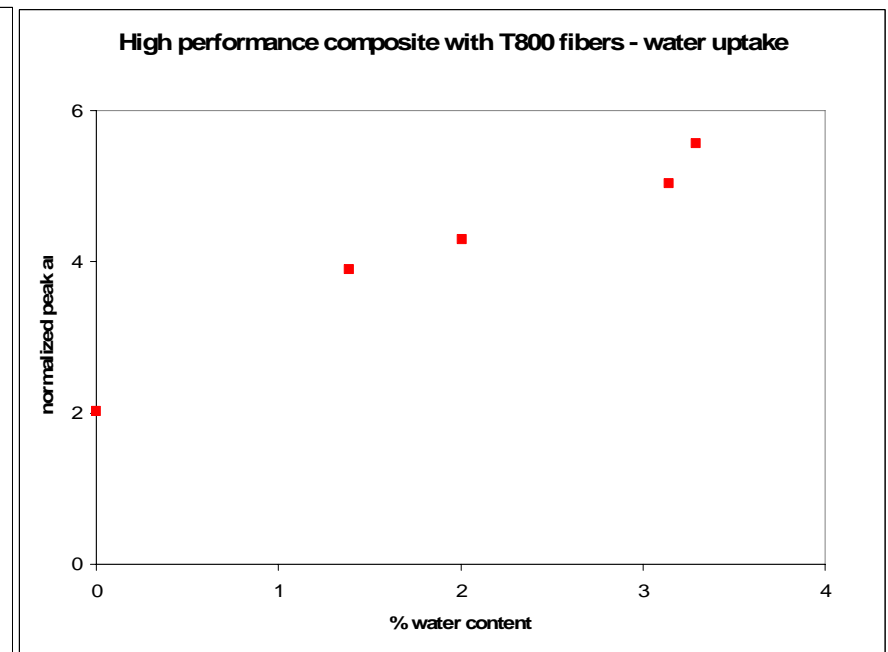
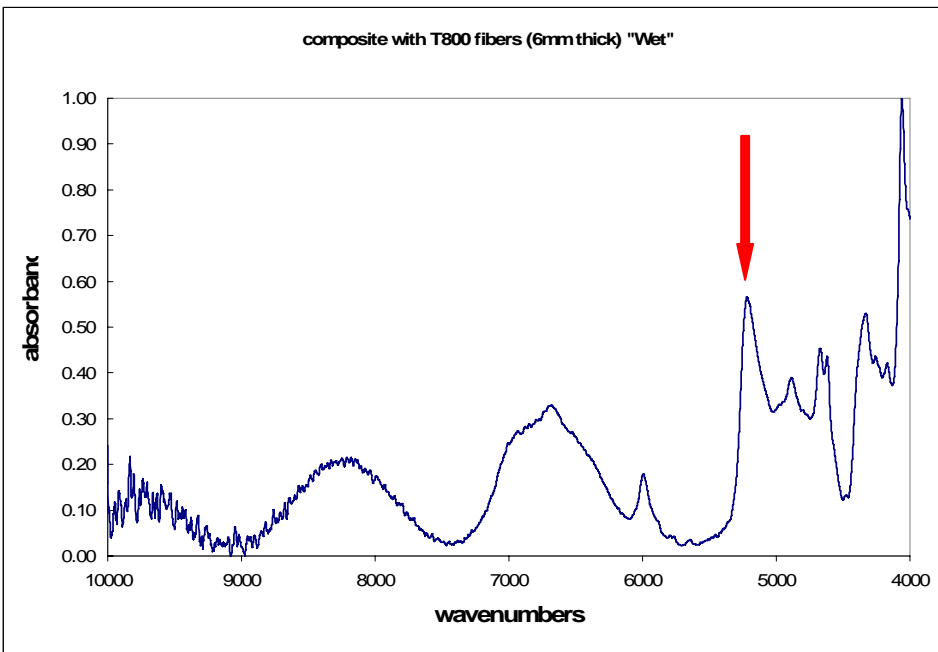


Conclusions

- Scatter during absorption of water by the composite < scatter during water loss
- Hysteresis during fast water loss due to concentration gradient imposed by fiber layers.
- At similar overall water content measured during a fast desorption cycle, the thicker composites contain less water at the surface and produce a smaller absorption

Methods for the Evaluation of the Fitness of Fiber Reinforced Composite Surfaces for Subsequent Adhesive Bonding

High performance composite with Toray T-800 fibers



Methods for the Evaluation of the Fitness of Fiber Reinforced Composite Surfaces for Subsequent Adhesive Bonding

Current near IR projects

Resin and adhesive cure state by diffuse reflectance (integrating sphere) near IR spectroscopy

Preliminary results presented here

Adhesive water uptake studies

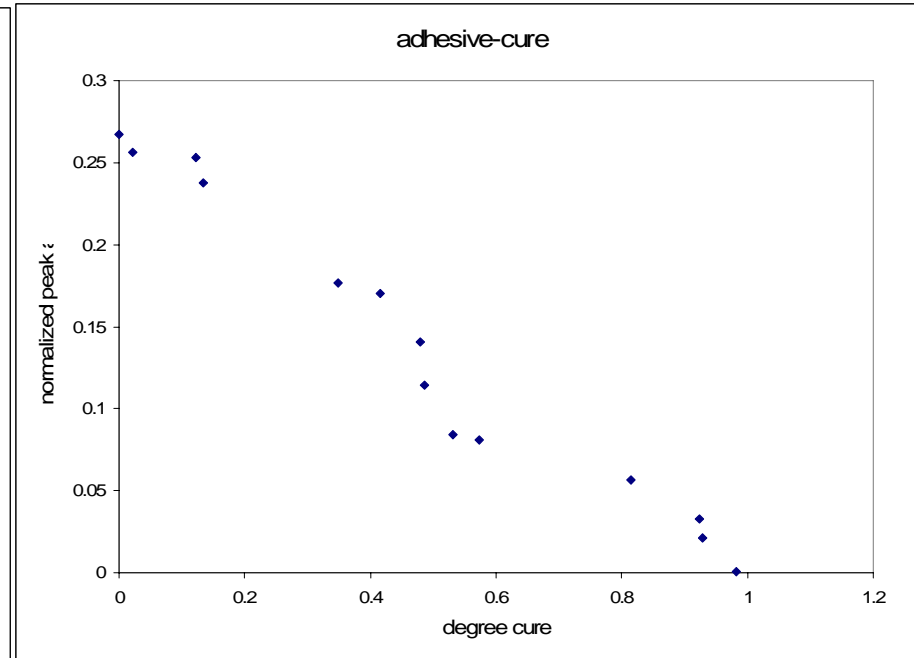
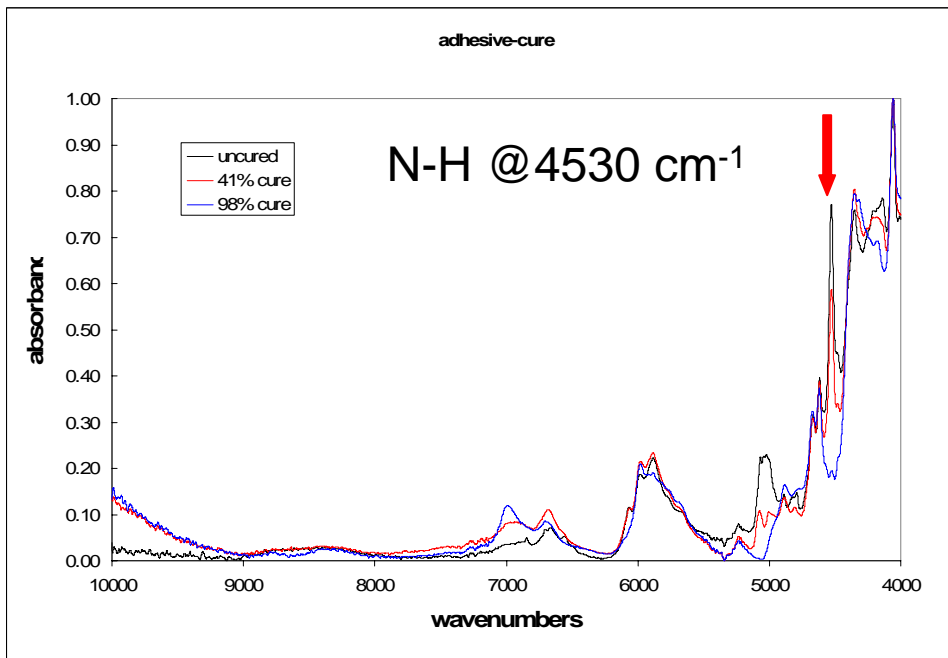
In progress

Methods for the Evaluation of the Fitness of Fiber Reinforced Composite Surfaces for Subsequent Adhesive Bonding

Composition of a filled high shear adhesive

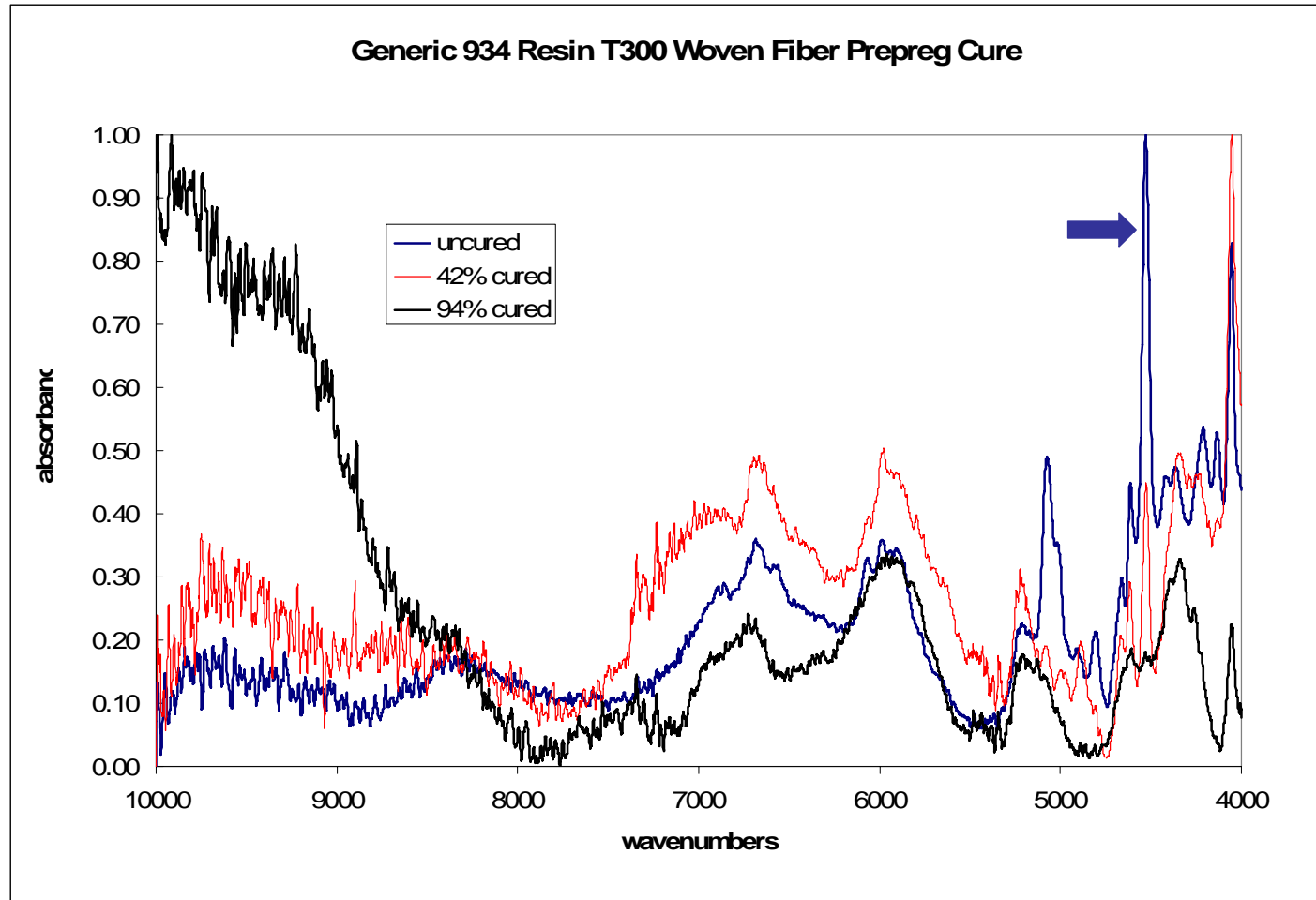
Component	Analysis	Mass%
Aluminum Filler	Gravimetry	34 %
DGEBA epoxy resin with n = 0.4	Prep. TLC & ¹ H NMR	35 %
TGDDM – MY720 epoxy resin	Prep. TLC & ¹ H NMR	15 %
DDS amine curative	Prep. TLC & ¹ H NMR	10 %
dicyandiamide (DCDA) amine curative	Mid IR	< 1%
CTBN rubber	Prep. TLC, ¹ H NMR, mid IR	< 5 %

Filled High Shear Adhesive cure state by near IR spectroscopy



Methods for the Evaluation of the Fitness of Fiber Reinforced Composite Surfaces for Subsequent Adhesive Bonding

934 resin w
T300 woven
fibers
prepreg -
cure state



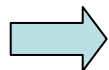
Laser Desorption – Mass Spectroscopy Experiment

Sample holder

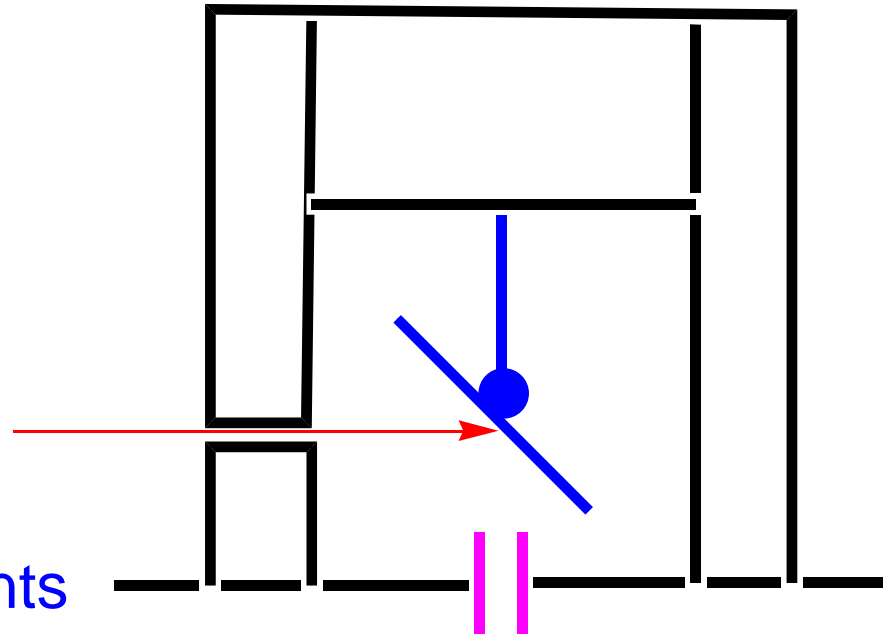
Laser beam

MS siphon tube

Surface contaminants



Ion fragments



Methods for the Evaluation of the Fitness of Fiber Reinforced Composite Surfaces for Subsequent Adhesive Bonding

Phase I (Dec 2005) goals

To have a working LD-MS system in place to analyze surface treated composite samples

Progress

Completed – laser has been purchased, sample stage has been built and “debugged”. System works.

Commenced work on Phase II

Development of spectral database for analysis of unknowns

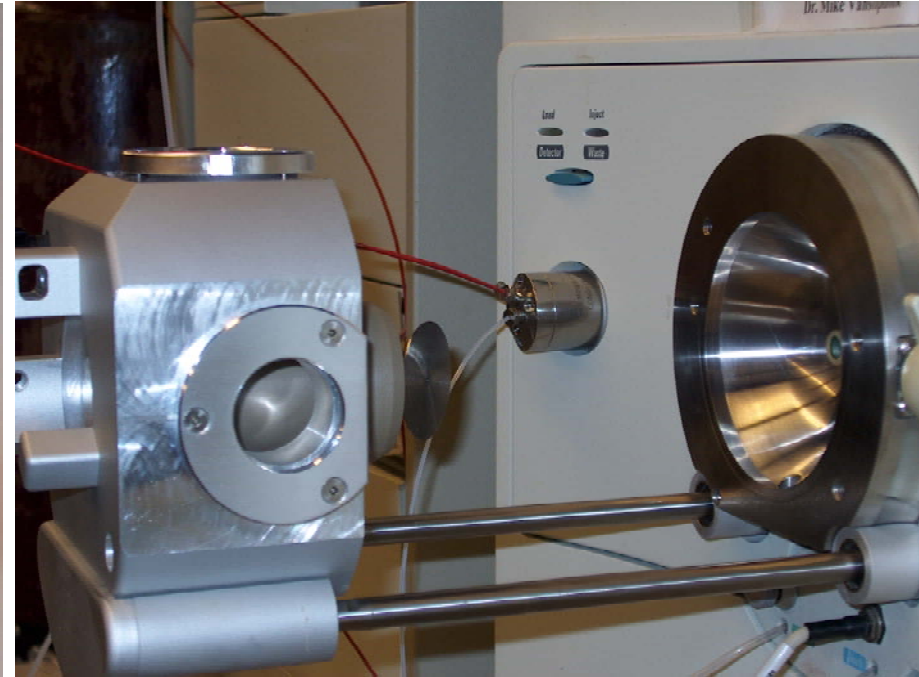
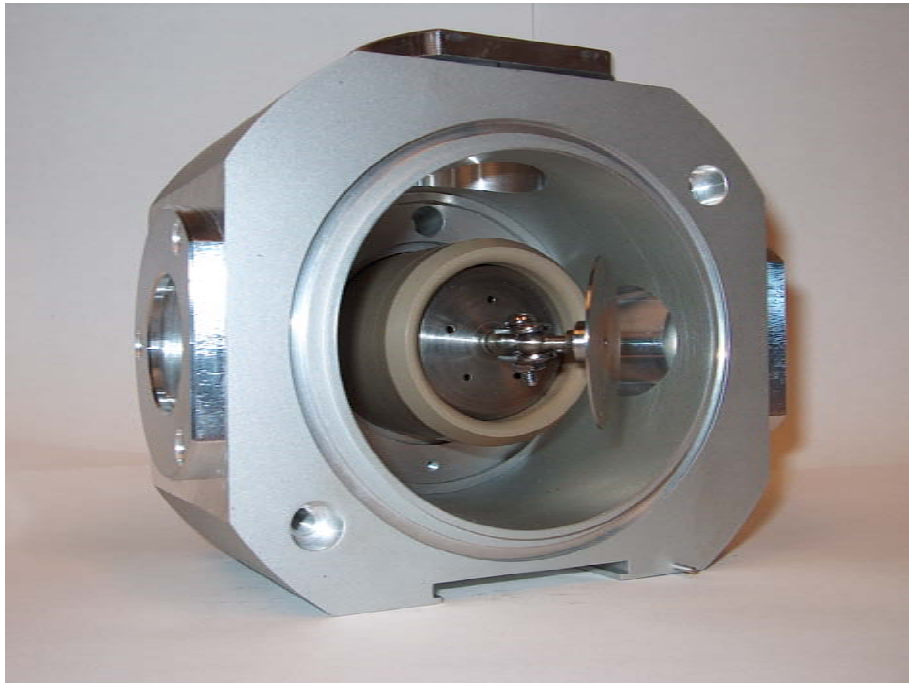
Methods for the Evaluation of the Fitness of Fiber Reinforced Composite Surfaces for Subsequent Adhesive Bonding

Phase III (2006-07) goals

To integrate this technique into the joint FAA/NIAR scarf repair project to characterize “conditioned” scarfed repair surfaces made from high performance composite prior to repair layup for **hydraulic fluid and jet fuel** at the scarfed surface

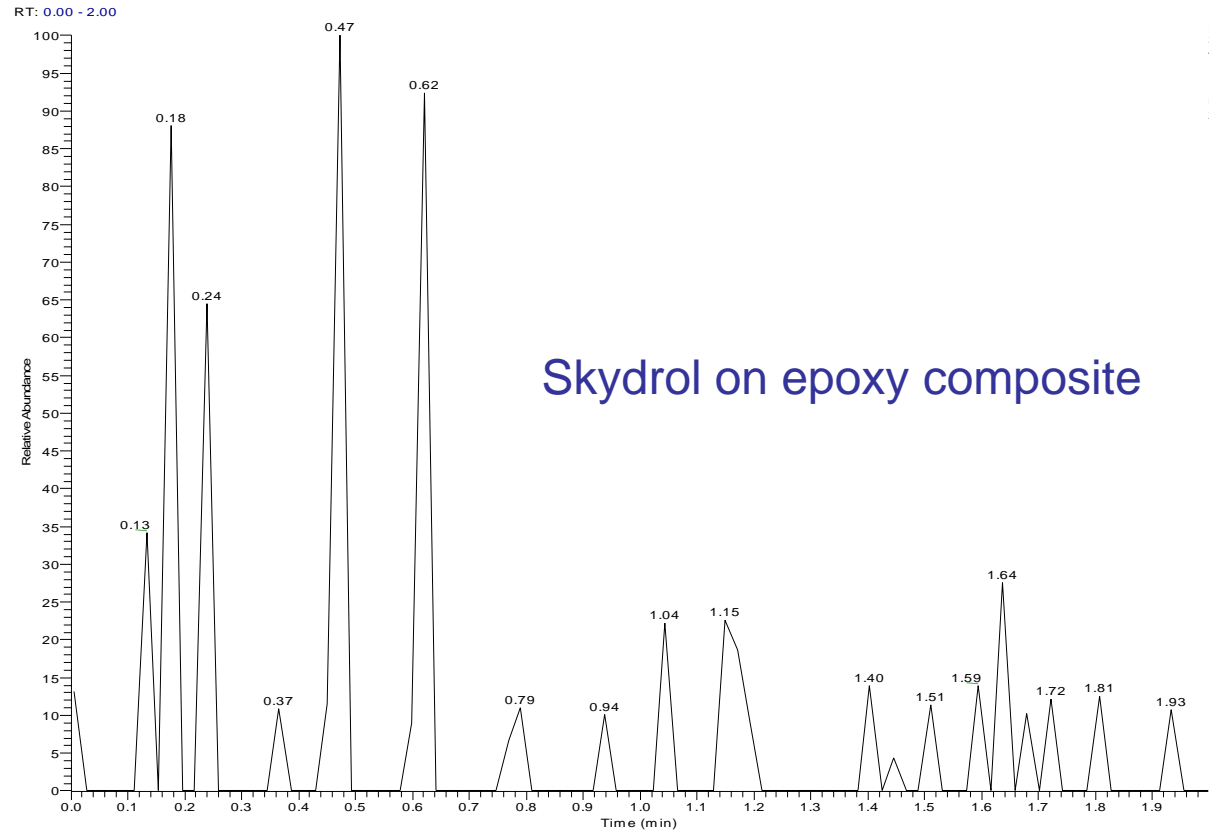
Progress: To commence this summer

Methods for the Evaluation of the Fitness of Fiber Reinforced Composite Surfaces for Subsequent Adhesive Bonding



Methods for the Evaluation of the Fitness of Fiber Reinforced Composite Surfaces for Subsequent Adhesive Bonding

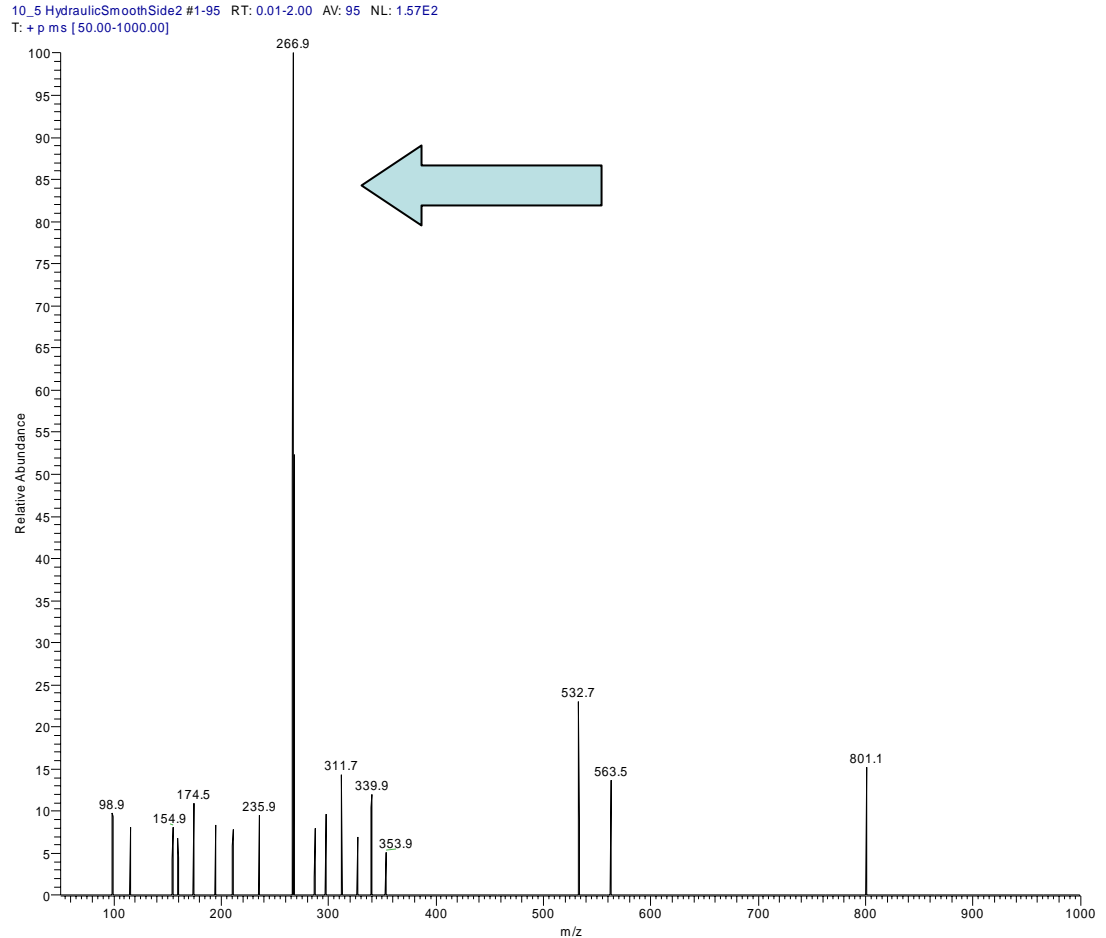
Material is removed from the surface in “bursts” We can focus on any burst or integrate the mass spectrum over the entire time interval. Molecular damage is minimal & parent ions can be identified



NL:
3.40E4
TIC MS
10.5
HydraulicS
mouthSide
2

Methods for the Evaluation of the Fitness of Fiber Reinforced Composite Surfaces for Subsequent Adhesive Bonding

Time averaged spectrum with tributyl phosphate (TBP) M266 arrowed



Methods for the Evaluation of the Fitness of Fiber Reinforced Composite Surfaces for Subsequent Adhesive Bonding

Spectra can be integrated into the NIST library using NIST MS search program (Version 1.7) tool to produce a library of LD-MS spectra to compare with and help recognize unknowns

Proof of concept

- Acquire spectrum of skydrol on composite
- Add to NIST library
- Reacquire as “unknown” on composite, search library for best fit, and re-identify Skydrol as most probable species

Methods for the Evaluation of the Fitness of Fiber Reinforced Composite Surfaces for Subsequent Adhesive Bonding

HydraulicSmooth#1-94 RT: 0.02-1.99 AV: 94 NL: 1.76E2

Formula:

MW: NA CAS#: NA NIST#: NA ID#: 8 DB: faa

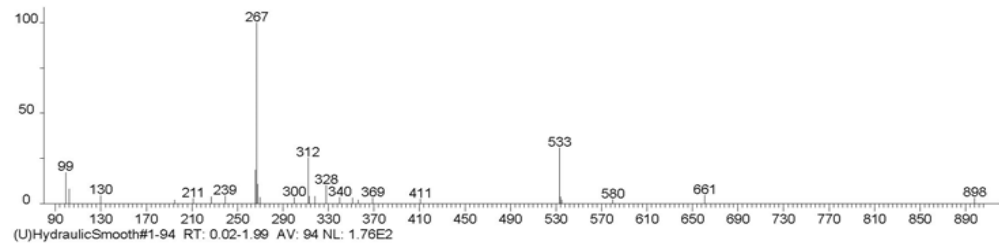
Comment: T: + p ms [50.00-1000.00]

27 Masses and Abundances

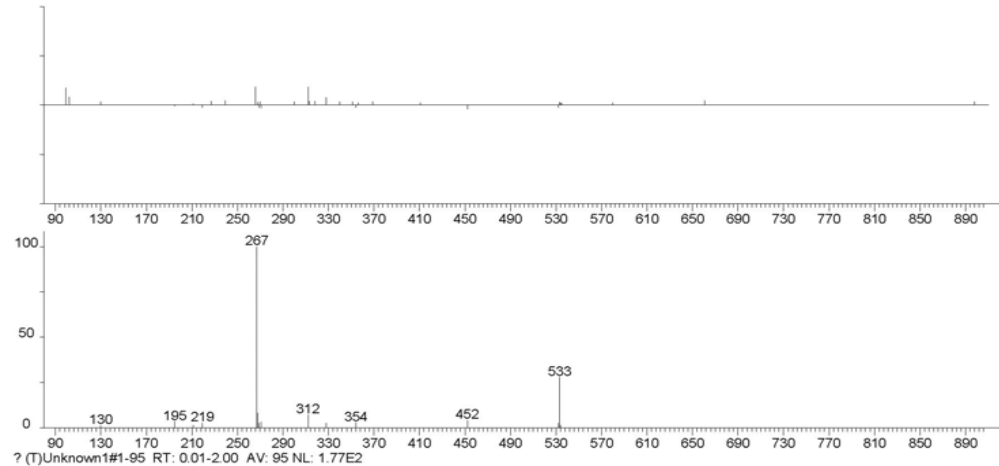
99	173	195	21	239	44	268	108	312	254	328	102	356	21	533	309	580	23
102	82	211	28	266	185	270	36	313	40	340	34	369	32	534	39	661	46
130	45	227	38	267	999	300	34	318	41	351	31	411	25	535	20	898	33

No synonyms

Best fit
from database



“Unknown”



Methods for the Evaluation of the Fitness of Fiber Reinforced Composite Surfaces for Subsequent Adhesive Bonding



- 1 611 663R 98.0P (U) HydraulicSmooth#1-94 RT: 0.02-1.99 AV: 94 NL: 1.76E2
- 2 306 422R 0.98P (U) hexa-ethyleneglycol#1-446 RT: 0.01-3.99 AV: 446 NL: 4.00E2
- 3 286 315R 0.44P (U) Sulfoxazole
- 4 273 278R 0.28P (U) Adenosine
- 5 240 302R 0.07P (U) 3-Methylcholanthrene
- 6 232 307R 0.05P (U) Methanone, bis[4-(dimethylamino)phenyl]-
- 7 224 277R 0.04P (U) Ergotamine Tartrate
- 8 214 251R 0.02P (U) Benzenamine, 4,4'-methylenebis[2-chloro-
- 9 204 232R 0.02P (U) Octadecanoic acid, methyl ester
- 10 188 192R 0.01P (U) Propyl Gallate
- 11 152 178R 0.00P (U) Squalane
- 12 137 156R 0.00P (U) Stannane, (acetyloxy)triphenyl-

Methods for the Evaluation of the Fitness of Fiber Reinforced Composite Surfaces for Subsequent Adhesive Bonding

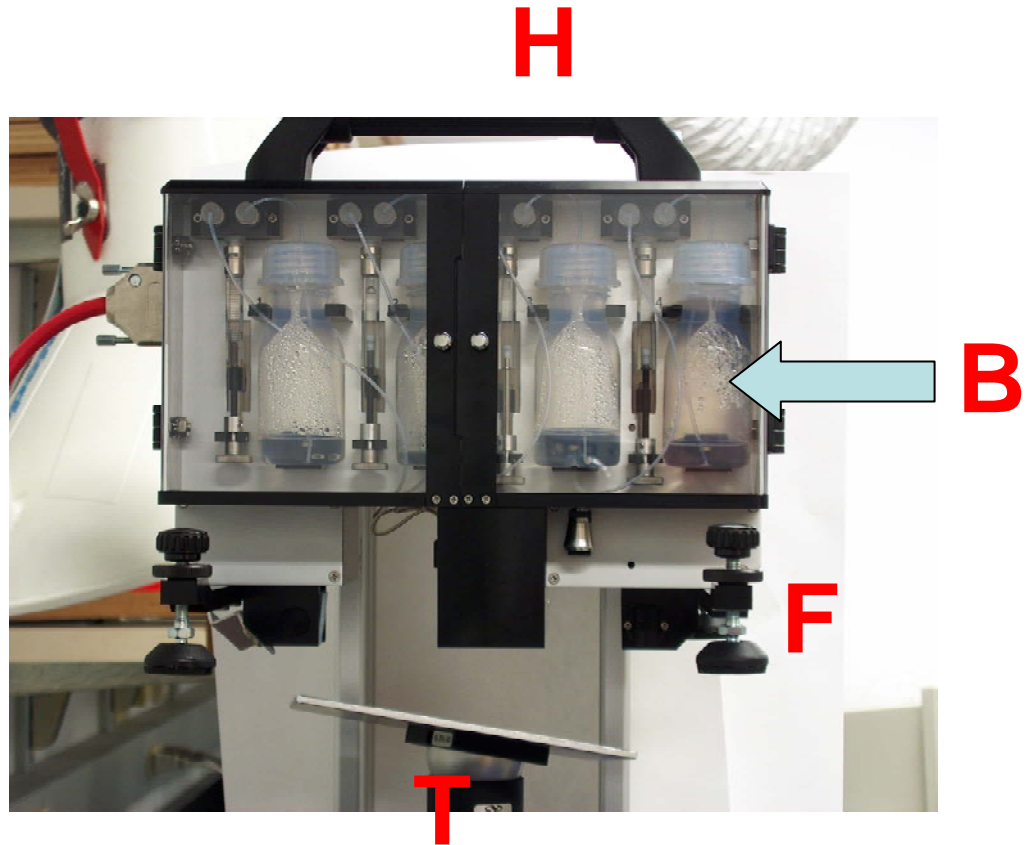
Surface free energy by contact angle measurement

H carry handle

F feet

B solvent bottle

T tilting stage



Methods for the Evaluation of the Fitness of Fiber Reinforced Composite Surfaces for Subsequent Adhesive Bonding

Phase I (Dec 2005) goals

To have a working automated portable multi-solvent contact angle measuring device in place to analyze surface treated composite samples as supplied by NIAR and Spirit Aerosystems beginning

Progress

Completed- Device has been fabricated and delivered (FDS PCA 100M-4). Sample mount has been modified to handle wedge shaped surfaces. Contact angle measurements have been made on scarfed surfaces ground into sheets of high performance composite.

Methods for the Evaluation of the Fitness of Fiber Reinforced Composite Surfaces for Subsequent Adhesive Bonding

Phase II (2006-07) goals

To integrate this technique into the joint FAA/NIAR scarf repair project to characterize “conditioned” scarfed repair surfaces made from high performance composite prior to repair layup for **surface free energy** at the scarfed surface

Progress: To commence this summer

Methods for the Evaluation of the Fitness of Fiber Reinforced Composite Surfaces for Subsequent Adhesive Bonding

Selected results

SURFACE	FLUID	CONTACT ANGLE (water)	SURFACE ENERGY - EOS (mN/m)
rough	none	59.2	48.28
smooth	none	65.3	44.57
wedge	none	47.5	55.16
smooth	deicing fluid	49.5	54.05
wedge	deicing fluid	45.5	56.29
rough	skydrol (hydraulic fluid)	47.2	55.33
smooth	skydrol (hydraulic fluid)	60	47.80
wedge	skydrol (hydraulic fluid)	66.5	43.83
rough	JP-8	37.5	60.66
smooth	JP-8	53.4	51.74
wedge	JP-8	45.3	56.41
	saltwater	no measurable contact angle, liquid simply spreads on contact	

Methods for the Evaluation of the Fitness of Fiber Reinforced Composite Surfaces for Subsequent Adhesive Bonding

A Look Forward Benefit to Aviation

LD-MS: An analytical tool to provide surface analysis at atmospheric pressure of composite and metal surfaces contaminated with volatile organics

Contact angle device: A robust, portable, user friendly version of a device that can be mounted on a cart or robotic arm to contribute to a go/no go answer to the bonding question

Near IR diffuse reflectance: A device that can be mounted on a hand held grip to determine moisture content and surface cure state in a composite part

NIST repair project : Design of repair methodologies for thick composite parts in the field