

*Six-Mile Corridor Economic Impact Study*

# Interstate 44 and Interstate 70 Corridor Summary

## What Businesses are Located inside the I-44 and I-70 Corridors?

### Employment Information within the Corridors

990,188 JOBS  
36% of all JOBS in Missouri  
42,029 EMPLOYERS  
24% of all EMPLOYERS in Missouri

### Top Five Employing Industries in the Corridors

102,418 JOBS in Retail Trade  
81,154 JOBS in Educational Services  
77,971 JOBS in Food Services and Drinking Places  
58,957 JOBS in Construction  
55,195 JOBS in Hospitals

*Note: Non-Farm Employment for June 2006*

## What Economic Impact do those Businesses have?

### 2006 Economic Impact to Missouri

1,863,655 JOBS each year paying an avg wage of \$34,628  
\$6.4 Billion in NET GENERAL REVENUES  
\$65.3 Billion in PERSONAL INCOME  
\$130.3 Billion in GROSS STATE PRODUCT



Our mission is to provide a world-class transportation experience that delights our customers and promotes a prosperous Missouri.



*Six-Mile Corridor Economic Impact Study*  
**Interstate 44 Corridor Summary**

**What Businesses are Located inside the I-44 Corridor?**

**Employment Information within the Corridor**

469,724 JOBS  
 17% of all JOBS in Missouri

21,966 EMPLOYERS  
 13% of all EMPLOYERS in Missouri

**Top Five Employing Industries in the Corridor**

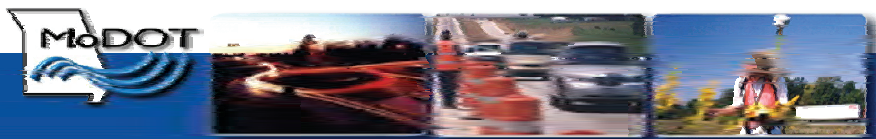
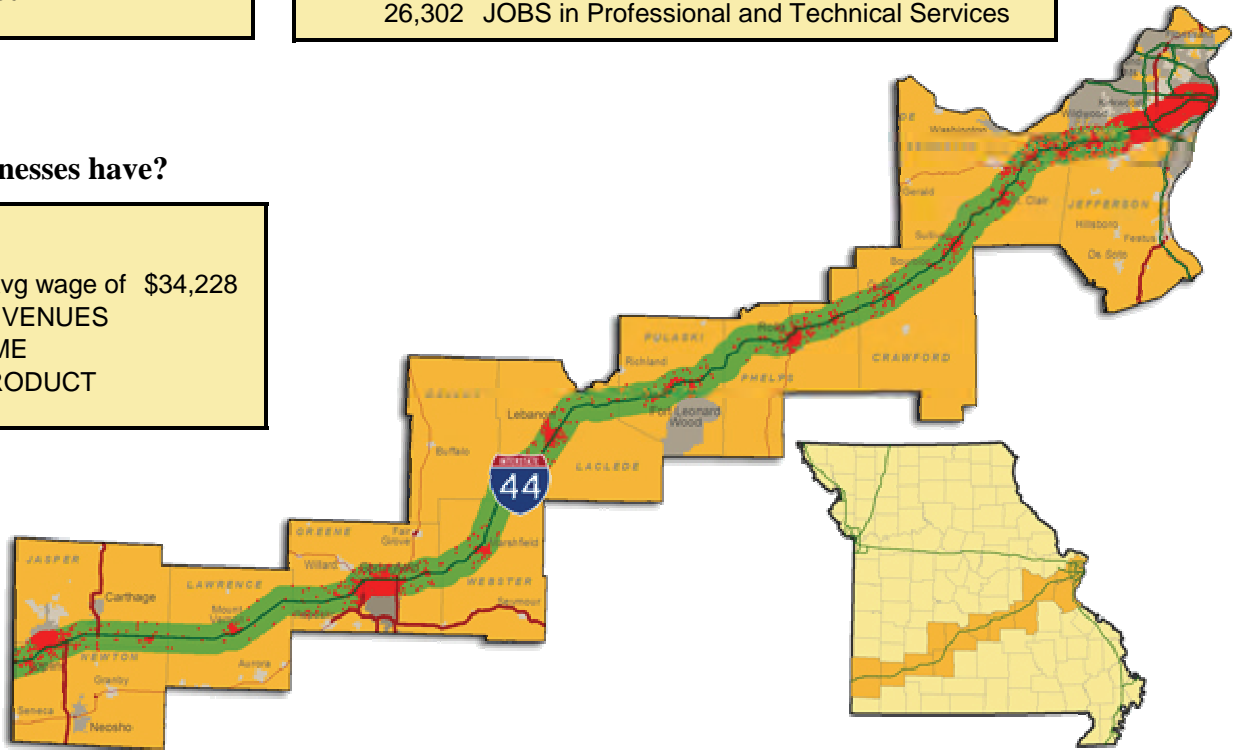
46,680 JOBS in Retail Trade  
 42,103 JOBS in Educational Services  
 40,465 JOBS in Food Services and Drinking Places  
 32,633 JOBS in Hospitals  
 26,302 JOBS in Professional and Technical Services

*Note: Non-Farm Employment for June 2006*

**What Economic Impact do those Businesses have?**

**2006 Economic Impact to Missouri**

869,662 JOBS each year paying an avg wage of \$34,228  
 \$2.9 Billion in NET GENERAL REVENUES  
 \$30.0 Billion in PERSONAL INCOME  
 \$60.2 Billion in GROSS STATE PRODUCT



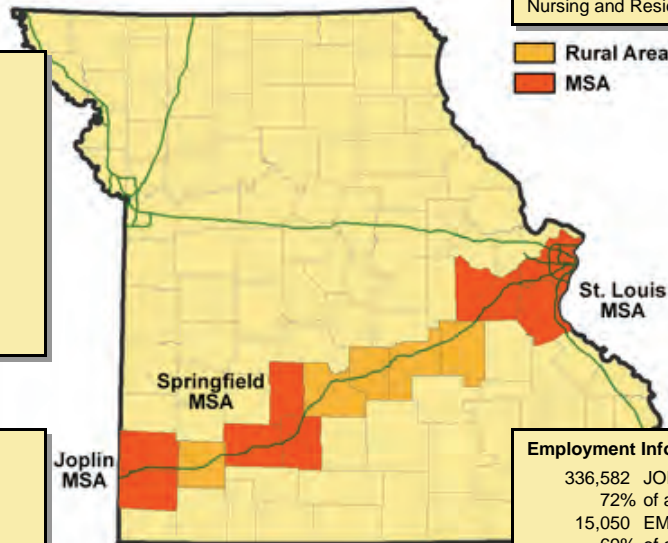
Our mission is to provide a world-class transportation experience that delights our customers and promotes a prosperous Missouri.



# Six-Mile Corridor Economic Impact Study

## Interstate 44 Corridor Area Details

Missouri Metropolitan Statistical Areas (MSA) along the I-44 Corridor



### Employment Information within the Springfield MSA

59,016 JOBS  
 13% of all JOBS in the I-44 Corridor  
 2,689 EMPLOYERS  
 12% of all EMPLOYERS in the I-44 Corridor

### Top Five Industries in the Springfield MSA

Retail Trade  
 Wholesale Trade  
 Truck Transportation  
 Food Services and Drinking Places  
 Construction

### Employment Information within the Joplin MSA

33,703 JOBS  
 7% of all JOBS in the I-44 Corridor  
 1,713 EMPLOYERS  
 8% of all EMPLOYERS in the I-44 Corridor

### Top Five Industries in the Joplin MSA

Retail Trade  
 Truck Transportation  
 Hospitals  
 Food Services and Drinking Places  
 Ambulatory Health Care Services

### Employment Information within Rural Areas

40,423 JOBS  
 9% of all JOBS in the I-44 Corridor  
 2,514 EMPLOYERS  
 11% of all EMPLOYERS in the I-44 Corridor

### Top Five Industries in Rural Areas

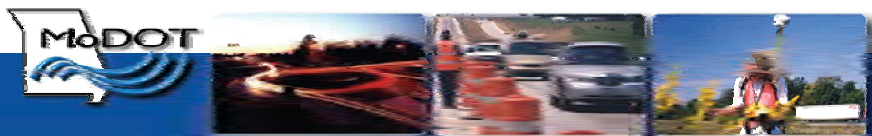
Retail Trade  
 Food Services and Drinking Places  
 Educational Services  
 Hospitals  
 Nursing and Residential Care Facilities

### Employment Information within the St. Louis MSA

336,582 JOBS  
 72% of all JOBS in the I-44 Corridor  
 15,050 EMPLOYERS  
 69% of all EMPLOYERS in the I-44 Corridor

### Top Five Industries in the St. Louis MSA

Educational Services  
 Food Services and Drinking Places  
 Retail Trade  
 Hospitals  
 Professional and Technical Services





# Six-Mile Corridor Economic Impact Study Interstate 70 Corridor Summary

## What Businesses are Located inside the I-70 Corridor?

### Employment Information within the Corridor

637,952 JOBS  
23% of all JOBS in Missouri  
27,419 EMPLOYERS  
16% of all EMPLOYERS in Missouri

### Top Five Employing Industries in the Corridor

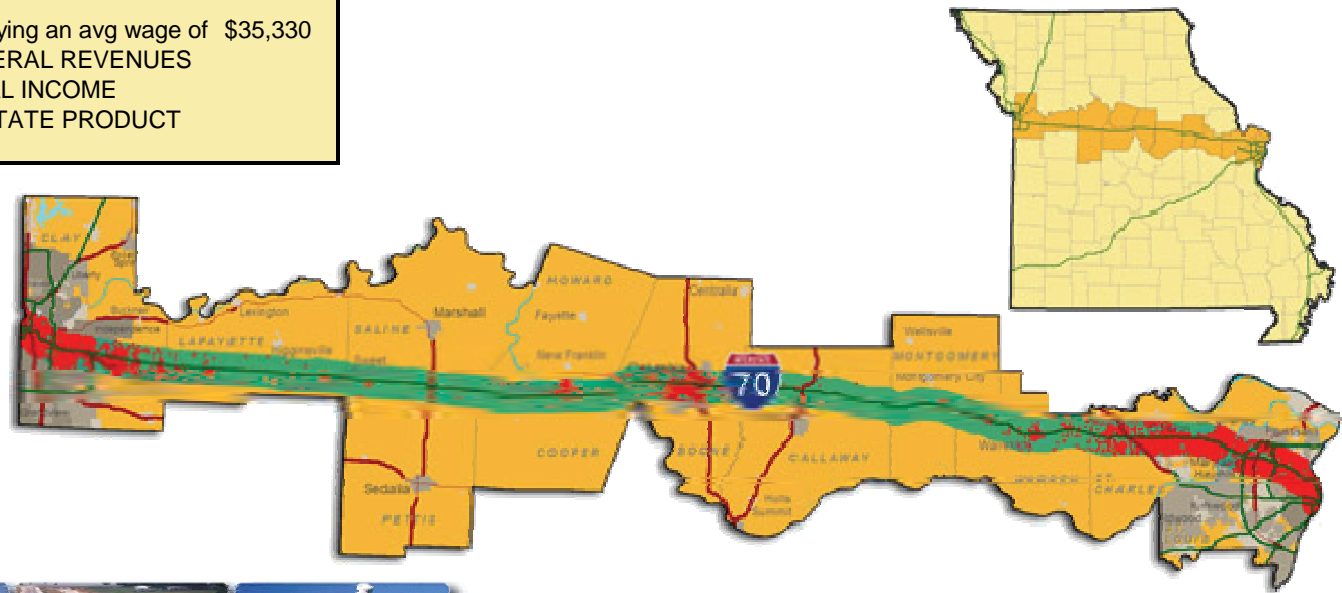
59,016 JOBS in Retail Trade  
47,938 JOBS in Educational Services  
46,224 JOBS in Food Services and Drinking Places  
39,057 JOBS in Professional and Technical Services  
36,556 JOBS in Administrative and Support Services

*Note: Non-Farm Employment for June 2006*

## What Economic Impact do those Businesses have?

### 2006 Economic Impact to Missouri

1,234,105 JOBS each year paying an avg wage of \$35,330  
\$4.3 Billion in NET GENERAL REVENUES  
\$44.2 Billion in PERSONAL INCOME  
\$89.9 Billion in GROSS STATE PRODUCT



Our mission is to provide a world-class transportation experience that delights our customers and promotes a prosperous Missouri.





# Six-Mile Corridor Economic Impact Study

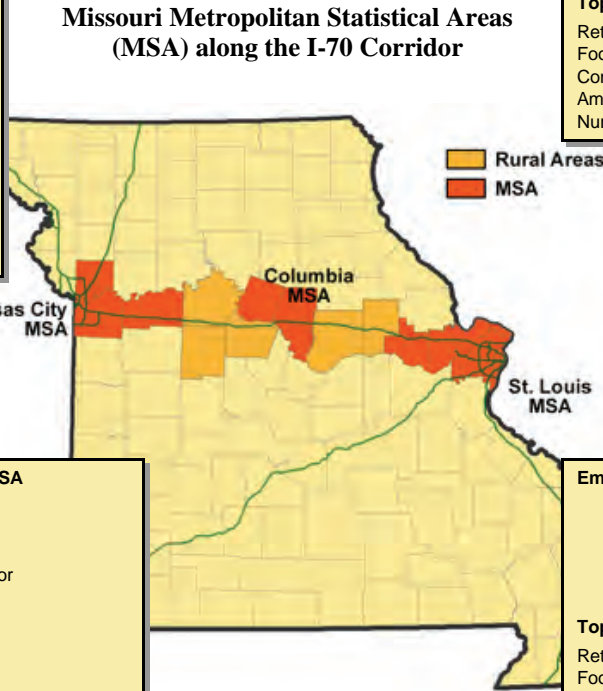
## Interstate 70 Corridor Area Details

**Employment Information within the Kansas City MSA**

188,566 JOBS  
 30% of all JOBS in the I-70 Corridor  
 8,987 EMPLOYERS  
 33% of all EMPLOYERS in the I-70 Corridor

**Top Five Industries in the Kansas City MSA**

- Retail Trade
- Professional and Technical Services
- Construction
- Food Services and Drinking Places
- Wholesale Trade



**Employment Information within Rural Areas**

8,820 JOBS  
 1% of all JOBS in the I-70 Corridor  
 539 EMPLOYERS  
 2% of all EMPLOYERS in the I-70 Corridor

**Top Five Industries in Rural Areas**

- Retail Trade
- Food Services and Drinking Places
- Construction
- Amusement, Gambling, and Recreation
- Nursing and Residential Care Facilities

**Employment Information within the Columbia MSA**

59,851 JOBS  
 9% of all JOBS in the I-70 Corridor  
 2,658 EMPLOYERS  
 10% of all EMPLOYERS in the I-70 Corridor

**Top Five Industries in the Columbia MSA**

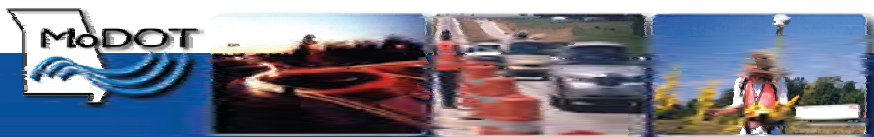
- Educational Services
- Hospitals
- Retail Trade
- Food Services and Drinking Places
- Ambulatory Health Care Services

**Employment Information within the St. Louis MSA**

380,715 JOBS  
 60% of all JOBS in the I-70 Corridor  
 15,235 EMPLOYERS  
 56% of all EMPLOYERS in the I-70 Corridor

**Top Five Industries in the St. Louis MSA**

- Retail Trade
- Food Services and Drinking Places
- Management of Companies and Enterprises
- Administrative and Support Services
- Educational Services

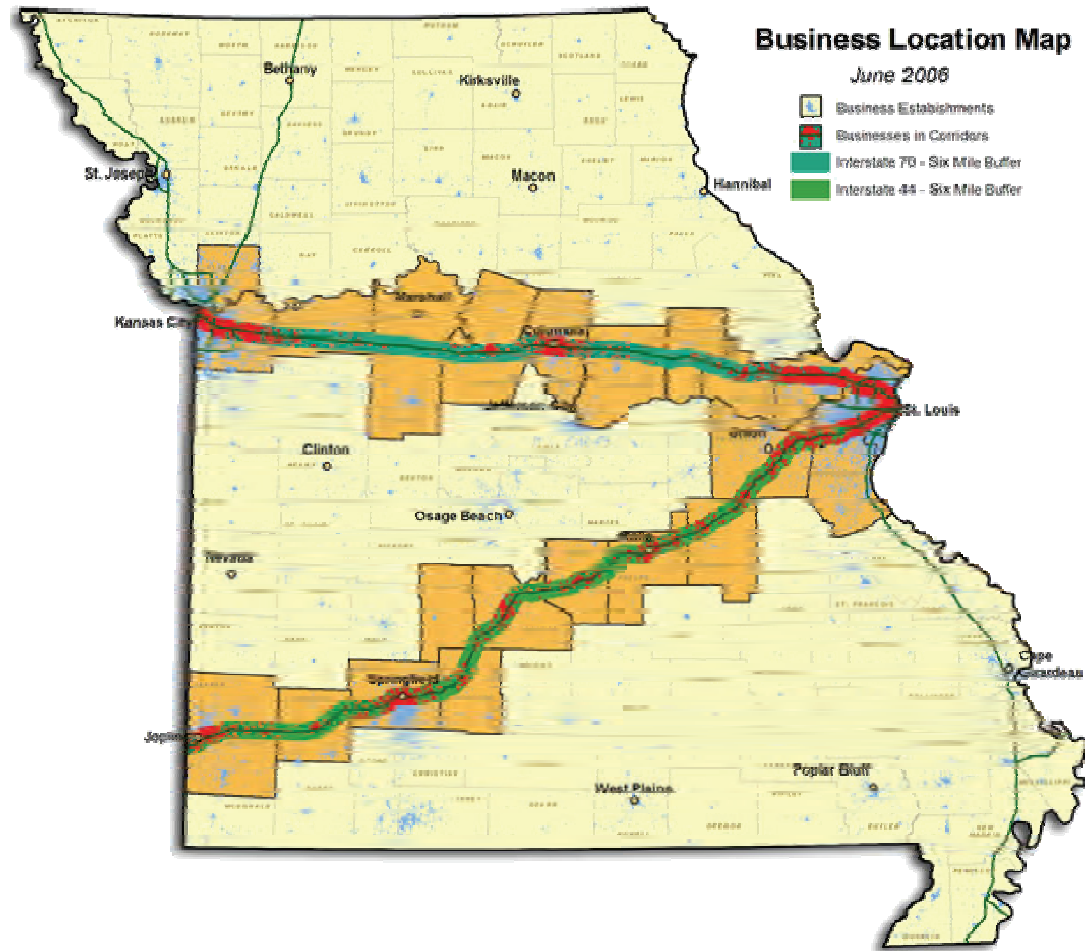


Our mission is to provide a world-class transportation experience that delights our customers and promotes a prosperous Missouri.



## Impact Analysis Notes

- The Quarterly Census of Employment and Wages (QCEW) data for June 2006 was used to derive industry employment information for the impact analyses. Only non-farm, non-governmental business establishments, with accurate location information, was used in the analyses.
- Buffer spatial analysis was used to determine which businesses resided within three miles of the selected interstate.
- Impact analysis conducted with REMI economic impact modeling software.
- The combined corridor impact analysis is not a sum of the individual I-44 and I-70 impact analyses. Because of buffer overlaps in the City of St. Louis, those businesses within 3 miles of both interstates were subtracted to avoid double-counting the impacts.
- Analysis conducted by the Missouri Economic Research and Information Center (MERIC), a unit within the Missouri Department of Economic Development. March 2007.



Our mission is to provide a world-class transportation experience that delights our customers and promotes a prosperous Missouri.