

TL
242
.093
v.3



U.S. Department
of Transportation
**National Highway
Traffic Safety
Administration**

DOT HS 806 772

April 1985

Final Report

Cost Evaluation of Federal Motor Vehicle Safety Standard
210 - Passenger Cars and Evaluation of Cost and Weight
Trends for Standards 201, 203 and 204 - Passenger Cars
Volume: III

1. Report No. DOT HS 806 772	2. Government Accession No.	3. Recipient's Catalog No.	
4. Title and Subtitle COST EVALUATION OF FEDERAL MOTOR VEHICLE SAFETY STANDARD 210 - PASSENGER CARS AND EVALUATION OF COST AND WEIGHT TRENDS FOR STANDARDS 201, 203 and 204 - PASSENGER CARS		5. Report Date APRIL 1985	6. Performing Organization Code
7. Author(s) WILLIAM R. OSEN, AND NORMAN F. LUDTKE		8. Performing Organization Report No.	
9. Performing Organization Name and Address PIONEER ENGINEERING & MANUFACTURING COMPANY 2500 E. NINE MILE ROAD WARREN, MICHIGAN 48091		10. Work Unit No. (TRAIS)	11. Contract or Grant No. DTNH22-83-C-06007
12. Sponsoring Agency Name and Address U.S. DEPARTMENT OF TRANSPORTATION NATIONAL HIGHWAY TRAFFIC SAFETY ADMINISTRATION 400 SEVENTH STREET, S.W. WASHINGTON, D. C. 20590		13. Type of Report and Period Covered FINAL REPORT SEPTEMBER 1983-APRIL 1985	
15. Supplementary Notes		14. Sponsoring Agency Code	
<p>16. Abstract</p> <p>The consumer cost and weight effect on 1983 vehicles, to comply with FMVSS 201, 203 and 204 as determined by a process of teardown analysis of those components affected by the Standards.</p> <p>The Standards cover:</p> <ul style="list-style-type: none"> FMVSS 201 - Occupant Protection in Interior Impact, VOLUME I FMVSS 203 - Impact Protection for the Driver from the Steering Control System, VOLUME II FMVSS 204 - Steering Control Rearward Displacement, VOLUME III* <p>A pre, post and trend cost and weight effect of complying with FMVSS 210 as determined by detail analysis of those components affected.</p> <p>The cars selected for this study were to be high volume representatives of all the various size classifications and, as near as possible, carry-over models or direct descendants of those in previous related studies. The sampling also includes cars downsized by weight reductions, recently redesigned smaller, more efficient vehicles with four and six cylinder engines, rack and pinion steering and front wheel drive.</p> <p>*This Document is VOLUME III (see above).</p>			
17. Key Words FMVSS 201, 203, 204 and 210, Consumer Cost, Wholesale Cost, Variable Manufacturing Cost, Micro-Analysis, Macro-Analysis		18. Distribution Statement Document is available to the public through the National Technical Information Service, Springfield, Virginia 22161	
19. Security Classif. (of this report) Unclassified	20. Security Classif. (of this page) Unclassified	21. No. of Pages	22. Price

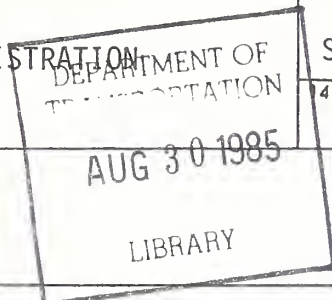


TABLE OF CONTENTS

	PAGE
TECHNICAL DOCUMENTATION PAGE	i
TABLE OF CONTENTS	iii
LIST OF TABLES	iv
PREFACE	v
INTRODUCTION	1
SUMMARY	3
APPENDIX A - FMVSS 210	A-1
ABBREVIATIONS FOR MATERIALS	
PART NUMBERING SYSTEM	
COST SHEETS & PHOTOGRAPHS	

LIST OF TABLES

<u>TABLE</u>	<u>TITLE</u>	<u>PAGE</u>
1	WEIGHTED AVERAGE SEAT BELT ANCHOR COSTS PRE STANDARD (1965, 1966, 1967) VEHICLES	10
2	WEIGHTED AVERAGE SEAT BELT ANCHOR COSTS POST STANDARD (1972, 1973, 1974) VEHICLES	11
3	WEIGHTED AVERAGE SEAT BELT ANCHOR COSTS TREND (1983) VEHICLES	12

PREFACE

Pioneer Engineering has conducted a cost study of components affected by:

- FMVSS 201 - Occupant Protection in Interior Impact
- FMVSS 203 - Impact protection for the Driver from the Steering Control System
- FMVSS 204 - Steering Control Rearward Displacement
- FMVSS 210 - Seat Belt Assembly Achorages

This work was performed under Contract DTNH22-83-C-06007. The objective of the study was to develop cost trends of the components required to meet these Standards. These costs were developed by selecting a sampling of automobiles that are produced in a relative high volume and were representative of a majority of those sold in the United States. Components from the sample vehicles were obtained and detailed cost were derived through reverse engineering analysis and detailed processing. The resulting cost data indicates the magnitude of the economic impact on the industry and the consumer from the implementation of these Standards. All cost data were based on on third quarter 1984 economics.

This contractor, Pioneer Engineering and Manufacturing Company, has conducted numerous previous "teardown" analyses for the NHTSA and private industry. The methodology for both conducting the "teardown" analysis and determining the estimated costs from actual part manufacturing process analysis has been developed and perfected by over 15 years experience in this type of work. The cost estimating techniques employed in the analysis are based on current automotive industry practice to assure real world consumer price values.

The contractor acknowledges the contributions of its staff, the automotive manufacturers, the Motor Vehicle Manufacturers Association and automotive trade publications. Special acknowledgement is made to the Contract Technical Manager, Mr. Warren LaHeist, for his contributions and helpful reviews throughout the program.

INTRODUCTION

The objectives of this contract were as follows:

- Determine the cost effect (trend cost) that Federal Motor Vehicle Safety Standards:
 - FMVSS 201 - Occupant Protection in Interior Impact
 - FMVSS 203 - Impact Protection for the Driver from the Steering Control System
 - FMVSS 204 - Steering Control Rearward Displacementhad on 1983 automobiles and also to make a determination of the affect of downsizing, weight reduction and front wheel drive may have had on the cost of implementing these Standards. These Standards were implemented in 1968.
- Develop Pre, Post and Trend Cost Comparison of:
 - oo FMVSS 210 - Seat Belt Assembly Anchoragesfor full, mid, compact, sub-compact, foreign cars, multi-purpose vehicles, and both standard and light-weight pickup trucks.

The basis for the above price determinations is the "teardown" and analysis of system components from selected vehicles representing comparable makes/models prior to and after the effective date of the Standards. All of the cost information is therefore compiled from actual changes made by the manufacturers to assure compliance with the requirements specified in the FMVSS.

The analysis of design changes between comparable vehicles highlights those resulting from implementation of the Standards and those made for other reasons, such as styling, cost reduction or other functional improvements not associated with the requirement of these Standards. The analysis also provides the material type and weight of all components in the systems. For those components identified as changed because of the Standards, a detailed, or Micro-Cost Analysis, was conducted to determine the variable manufacturing costs. This analysis is based on a complete manufacturing process study which provides material, labor and burden costs for each part plus the costs of assembly operations.

A Macro-Analysis of the major U.S. automobile manufacturer's financial statements was utilized to determine the ratio of cost of goods sold to income from sales which

in turn provided an average ratio of variable manufacturing cost to manufacturers wholesale price. An analysis of dealer discounts in the automotive industry provided a typical ratio of wholesale price to consumer price. A summation of the component consumer price changes for each set of comparable vehicles provided the net consumer price effect of the specified Standards.

The quantity of pages generated by this effort has dictated that this report be presented in three (3) volumes. This volumes includes text for the entire report, and the data for Standard 201. Volume II contains the data for Standards 203 and 204; Volume III contains text for Standard 210.

SUMMARY

The purpose of FMVSS 210 is to minimize injuries by ensuring that seat belt anchorages are properly located and they will transmit the required loads from the seat belts to the vehicle structure.

The purpose of this study is to identify the motor vehicle industry's initial cost to comply with FMVSS 210, and to track the cost of seat belt anchors of comparable models, by analyzing anchor related components of Pre-Standard, Post-Standard and Current (late trend) vehicles.

The vehicles selected for this study are each representative of a large group of cars. Chevrolet's Impala/Caprice represents not only the standard size model of other manufacturers, but other GM models across all car sizes. GM uses the same floor pan anchor for the standard size Caprice as it does for the Cavalier.

Other manufacturers do the same thing. Some of the anchors on the Ford LTD appear identical to those on both larger and smaller Ford models. The Reliant too has anchors that are comparable to anchors found in other Chrysler models.

The AMC Gremlin and Alliance were selected because of their comparable size and the fact that they were American Motors high volume cars.

Toyota's Tercel and Nissan's Sentra were the two highest volume import models and represented the two manufacturers that sell 45% of all imported cars sold in the U.S.

The sampling of light trucks include the highest volume vehicles in each category. The categories include standard and light domestic pickup trucks, light weight foreign trucks and the four most popular multi-purpose vehicles.

All of the pre, post and trend vehicles included in the study had at least front seat inboard and outboard anchors with the exception of the 1965 Toyota Corona and the two Pre-Standard imported (Toyota and Datsun) pick-up trucks. Pioneer was informed by Mr. Mike DeAmato, Toyota Customer Relations in Cincinnati, Ohio that Pre-Standard seat belts were available as options but not installed as standard equipment. None of the Pre or Post (72-74) Standard multi-purpose vehicles or trucks had provisions for shoulder belts (Type II) anchors. However, all trend (83) vehicles had anchor provisions for both Type I and II seat belts.

Information provided thru Wm. C. Jones of American Motors, C. Kennedy of Chrysler, Rober Maugh of Ford and D. Landwher of General Motors, indicated that there was no metal gage increase or additional reinforcement necessary when seat belt anchors were installed on underbody panels. As a general rule, as the gage of the supporting panel increased, the size of the anchor plate decreased. The floor pan usually had the larger anchor plates and ofter the "B" pillar anchor was just a nut welded to a heavy gage "B" pillar inner panel.

MAKE AND MODEL IDENTIFICATION OF VEHICLES
 USED IN COST SAMPLING PLAN FOR
 FEDERAL MOTOR VEHICLE SAFETY STANDARD 210

NUMBER	MAKE	SIZE*	MODEL
01	Chevrolet	Standard	Impala/Caprice
05	Ford	Intermediate	Fairlane/LTD
09	Chrysler	Compact	Valiant/Reliant
10	A.M.C.	Subcompact	American, Gremlin, Alliance
11	Toyota	Subcompact	Corona, Tercel
12	Nissan	Subcompact	Sentra
13	Chevrolet	Standard	Pickup, C-10
14	Chevrolet	Light	Pickup, S-10
15	Ford	Standard	Pickup, F-150
16	Ford	Light	Pickup, Ranger
17	Chevrolet	Standard	M.P.V., Blazer
18	Ford	Standard	M.P.V., Bronco
19	Chrysler	Standard	M.P.V., Ram Charger
20	A.M.C.	Standard	M.P.V., Jeep
21	Nissan	Light	Pickup
22	Toyota	Light	Pickup

*Size Classification Per Automotive News

SEAT BELT ANCHORS

The Society of Automotive Engineers' original seat belt anchor recommended practice (SAE J787) was issued in June and approved by the Motor Vehicle Seat Belt Committee in November of 1961. By 1964 the major automobile manufacturers installed seat belts as standard equipment, but the buyer could delete them as an option until 1965 when front seat "Type I" lap belts (pelvic protection) were standard on most cars.

In 1963 the SAE recommendations were revised and more detailed (SAE J787a). In addition, a recommended method of testing and corrosion protection was included. Again in 1966 the standard was updated (SAE J787b) and for the first time included "Type II" upper torso restraint anchorage, suggested strength requirements, and testing specifications. Outboard rear seat belts were added to the SAE recommendations in 1967.

Motor Vehicle Safety Standard 210 made Type I seat belts mandatory on multi-purpose vehicles, trucks and busses on July 1, 1971. Upper torso restraint anchors were included on January 1, 1972. Safety Standard 210 became effective for passenger cars on January 1, 1972. Type II seat belts for multi purpose vehicles and trucks required January 1, 1976 (FMVSS 208).

In July, 1976 the recommended practice (SAE J787b) was discontinued and replaced with three recommendations, each with a different area of responsibility; SAE J383 deals with specific design recommendations for locating both the lap and torso belt assembly anchors. Recommended practice (SAE J384) outlines both dynamic and static test procedures of seat belt anchorages attached to the vehicle structure or seat assemblies installed in the vehicle. Recommended practice (SAE J385) specifies performance requirements for both static and dynamic testing of seat belt anchors.

A brief analysis of the cost effect of the above changes had on the vehicles studied under this contract follows.

ANCHOR PLATE COST INCREASE

CHEVROLET - Post cost was .055 more than Pre due to the addition of upper shoulder belt anchors in 1972. Trend added a lower shoulder belt anchor but cost .024 less than Post because the anchor plates are extruded and left untapped. This saves the cost of a nut and its assembly to the plate. Self tapping anchor screws are necessary at a small cost penalty (see Figure A).

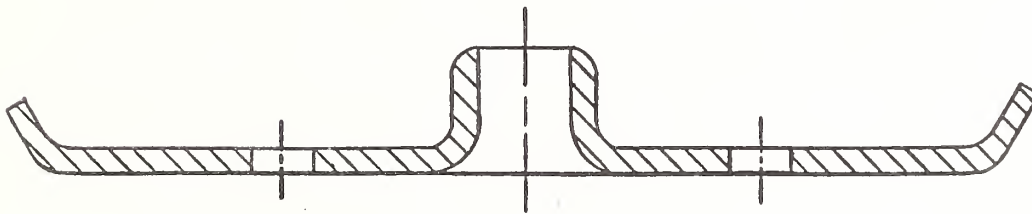
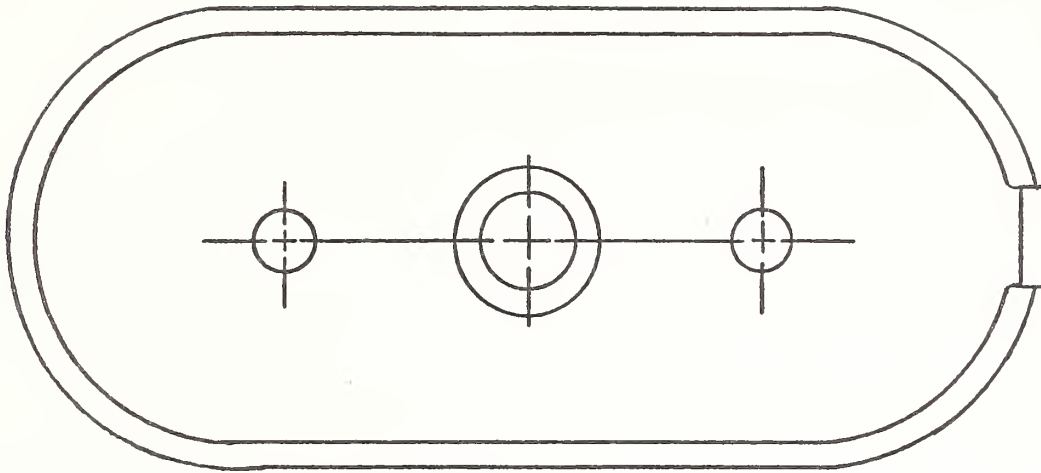


Figure A

TYPICAL GM SEAT BELT ANCHOR PLATE

The extruded center serves as an integral nut whose internal threads are cut when the self tapping anchor screw is driven home at assembly.

FORD - Post cost was 1.042 more than Pre because of heavier anchors and the addition of shoulder belts. Trend added a lower shoulder belt anchor but cost 1.262 less than Post because three of the anchor plates were eliminated. Nuts were projection welded directly to the body panel.

CHRYSLER - Post cost was .717 more than Pre due to the addition of upper and lower shoulder belts.

AMC - Post cost was 2.607 more than Pre due to larger anchors and the addition of shoulder belts. Trend cost was 3.836 lower than Post because of smaller and thinner anchor plates.

TOYOTA - Seat belts were not required on Pre models per Mike DeAmato, Toyota Customer Relations, Cincinnati, Ohio. There was 1.227 cost increase in the Trend Toyota due to larger anchor plates and the addition of lower shoulder belts.

CHEVROLET C10 PICKUP - Post cost was .877 more than Pre due to the addition of a shoulder belt.

FORD PICKUP - Trend cost was .531 more than Post due to the addition of a shoulder belt.

CHEVROLET BLAZER - Trend cost was .531 more than Post due to the addition of a shoulder belt.

FORD BRONCO - Anchor plates for Pre and Trend vehicles were not available. The cost of these parts was based on Ford Body Illustrations. The cost of Trend model increased .897 over the Post model because of larger anchor plates and the addition of shoulder belts.

CHRYSLER RAM CHARGER - Cost of Trend was .567 more than Post because lower and upper shoulder belts were added.

JEEP CJ - Trend cost was 5.358 more than Post due to the addition of upper and lower anchor points to accommodate shoulder belts. Instead of using a conventional nut and reinforcing plate assembly spot welded to a body structure panel, in-line holes were pierced into the tubular crash bar and anchor bolt tubes were arc welded into place for both lower and upper shoulder belt anchors.

NISSAN PICKUP - Cost of the Trend was .976 more than the Post model because two rear seats requiring two anchors points were added.

TOYOTA PICKUP - Trend cost was 1.951 more than the Post model because of larger anchor plates and the addition of a lower shoulder belt anchor.

TABLE 1
WEIGHTED AVERAGE SEAT BELT ANCHOR COSTS
PRE STANDARD (1965, 1966, 1967) VEHICLES

PASSENGER CARS	NO.	CLASS	COST	A	B
GM Chevrolet	1	Std	\$2.73	1,201,700	\$3,280,641
Ford Fairlane	5	Int	3.07	238,800	733,116
Chrysler Valiant	9	Com	2.30	251,057	577,431
AMC American	10	Subcom	2.97	93,760	278,467
Toyota Tercel	11	Subcom	----	----	----
Nissan Sentra	12	Subcom	----	----	----
				1,785,317	\$4,869,655

Safety System Weighted Average Cost - Column B Total Divided By Column A Total = \$2.73.

LIGHT TRUCKS	NO.	CLASS	COST	A	B
GM C-10 Pickup/GMC	13	Std	\$0.47	422,300	\$ 198,481
GM S-10 Pickup	14	Light	----	----	----
Ford F-150 Pickup	15	Std	1.05	328,100	344,505
Ford Ranger	16	Light	---	----	----
GM Blazer	17	Std	---	----	----
Ford Bronco	18	Std	0.71	16,631	11,808
Chrysler Ram Charger	19	Std	---	----	----
AMC Jeep	20	Std	1.14	99,612	113,558
Nissan Pickup	21	Light	---	----	----
Toyota Pickup	22	Light	---	----	----
				866,643	\$ 668,352

Safety System Weighted Average Cost - Column B Total Divided By Column A Total = \$.77.

A = Total Vehicle Production, B = Cost x A (Production).

TABLE 2
WEIGHTED AVERAGE SEAT BELT ANCHOR COSTS
POST STANDAD (1972, 1973, 1974) VEHICLES

PASSENGER CARS	NO.	CLASS	COST	A	B
GM Chevrolet	1	Std	\$2.78	904,541	\$2,514,623
Ford Fairlane	5	Int	4.11	331,798	1,363,690
Chrysler Valiant	9	Com	3.02	544,060	1,643,061
AMC Gremlin	10	Subcom	5.58	85,181	475,310
Toyota Corona	11	Subcom	2.71	53,047	143,757
Nissan Sentra	12	Subcom	----	----	----
				1,918,627	\$6,140,441

Safety System Weighted Average Cost - Column B Total Divided By Column A Total = \$3.20.

LIGHT TRUCKS	NO.	CLASS	COST	A	B
GM C-10 Pickup/GMC	13	Std	\$1.35	445,699	\$ 601,694
GM S-10 Pickup	14	Light	----	----	----
Ford F-150 Pickup	15	Std	1.05	429,664	452,147
Ford Ranger	16	Light	----	----	----
GM Blazer	17	Std	0.76	57,711	43,860
Ford Bronco	18	Std	0.71	19,961	14,172
Chrysler Ram Charger	19	Std	1.40	14,733	20,626
AMC Jeep	20	Std	1.14	14,340	16,348
Nissan Pickup	21	Light	1.70	60,118	102,200
Toyota Pickup	22	Light	1.97	37,466	73,808
				1,079,692	\$1,323,855

Safety System Weighted Average Cost - Column B Total Divided By Column A Total = \$1.23.
A = Total Vehicle Production, B = Cost x A (Production).

TABLE 3
WEIGHTED AVERAGE SEAT BELT ANCHOR COSTS
TREND (1983) VEHICLES

PASSENGER CARS	NO.	CLASS	COST	A	B
GM Chevrolet	1	Std	\$2.76	676,907	\$1,868,263
Ford LTD	2	Int	2.85	420,858	1,199,445
Chrysler Reliant	9	Com	2.99	338,652	1,012,569
AMC Alliance	10	Subcom	1.74	142,205	247,437
Toyota Tercel	11	Subcom	3.94	147,965	582,982
Nissan Sentra	12	Subcom	2.97	<u>209,889</u>	<u>623,370</u>
				1,936,476	\$5,534,067

Safety System Weighted Average Cost - Column B Total Divided By Column A Total = \$2.86.

LIGHT TRUCKS	NO.	CLASS	COST	A	B
GM C-10 Pickup/GMC	13	Std	\$1.30	424,221	\$ 551,487
GM S-10 Pickup	14	Light	2.22	321,054	712,740
Ford F-150 Pickup	15	Std	1.61	345,182	555,743
Ford Ranger	16	Light	1.61	203,078	326,956
GM Blazer/GMC	17	Std	1.30	58,647	76,241
Ford Bronco	18	Std	1.61	131,203	211,237
Chrysler Ram Charger	19	Std	1.96	11,774	23,077
AMC Jeep	20	Std	6.50	70,829	460,389
Nissan Pickup	21	Light	2.68	137,355	368,111
Toyota Pickup	22	Light	3.92	<u>171,052</u>	<u>670,524</u>
				1,874,395	\$3,956,505

Safety System Weighted Average Cost - Column B Total Divided By Column A Total = \$2.11.

A = Total Vehicle Production, B = Cost x A (Production).

APPENDIX A
ABBREVIATIONS FOR MATERIALS
PART NUMBERING SYSTEM
COST SHEETS AND PHOTOGRAPHS

ABBREVIATIONS

NUMERICAL ORDER

MATERIAL TYPE	MATERIAL DESCRIPTION	MATERIAL TYPE	MATERIAL DESCRIPTION	MATERIAL TYPE	MATERIAL DESCRIPTION
01	ACRIDE	37	FOUNDED METAL	71	STEEL & BRASS
02	ALUMINUM	38	FOUR WHEEL MOLDING COMPOUND	72	STEEL & BRASS
03	ALUMINUM	39	FOUR WHEEL MOLDING COMPOUND	73	STEEL & BRASS
04	ALUMINUM	40	FOUR WHEEL MOLDING COMPOUND	74	STEEL & BRASS
05	ALUMINUM	41	FOUR WHEEL MOLDING COMPOUND	75	STEEL & BRASS
06	ALUMINUM	42	FOUR WHEEL MOLDING COMPOUND	76	STEEL & BRASS
07	ALUMINUM	43	FOUR WHEEL MOLDING COMPOUND	77	STEEL & BRASS
08	ALUMINUM	44	FOUR WHEEL MOLDING COMPOUND	78	STEEL & BRASS
09	ALUMINUM	45	FOUR WHEEL MOLDING COMPOUND	79	STEEL & BRASS
10	ALUMINUM	46	FOUR WHEEL MOLDING COMPOUND	80	STEEL & BRASS
11	ALUMINUM	47	FOUR WHEEL MOLDING COMPOUND	81	STEEL & BRASS
12	ALUMINUM	48	FOUR WHEEL MOLDING COMPOUND	82	STEEL & BRASS
13	ALUMINUM	49	FOUR WHEEL MOLDING COMPOUND	83	STEEL & BRASS
14	ALUMINUM	50	FOUR WHEEL MOLDING COMPOUND	84	STEEL & BRASS
15	ALUMINUM	51	FOUR WHEEL MOLDING COMPOUND	85	STEEL & BRASS
16	ALUMINUM	52	FOUR WHEEL MOLDING COMPOUND	86	STEEL & BRASS
17	ALUMINUM	53	FOUR WHEEL MOLDING COMPOUND	87	STEEL & BRASS
18	ALUMINUM	54	FOUR WHEEL MOLDING COMPOUND	88	STEEL & BRASS
19	ALUMINUM	55	FOUR WHEEL MOLDING COMPOUND	89	STEEL & BRASS
20	ALUMINUM	56	FOUR WHEEL MOLDING COMPOUND	90	STEEL & BRASS
21	ALUMINUM	57	FOUR WHEEL MOLDING COMPOUND	91	STEEL & BRASS
22	ALUMINUM	58	FOUR WHEEL MOLDING COMPOUND	92	STEEL & BRASS
23	ALUMINUM	59	FOUR WHEEL MOLDING COMPOUND	93	STEEL & BRASS
24	ALUMINUM	60	FOUR WHEEL MOLDING COMPOUND	94	STEEL & BRASS
25	ALUMINUM	61	FOUR WHEEL MOLDING COMPOUND	95	STEEL & BRASS
26	ALUMINUM	62	FOUR WHEEL MOLDING COMPOUND	96	STEEL & BRASS
27	ALUMINUM	63	FOUR WHEEL MOLDING COMPOUND	97	STEEL & BRASS
28	ALUMINUM	64	FOUR WHEEL MOLDING COMPOUND	98	STEEL & BRASS
29	ALUMINUM	65	FOUR WHEEL MOLDING COMPOUND	99	STEEL & BRASS
30	ALUMINUM	66	FOUR WHEEL MOLDING COMPOUND	00	STEEL & BRASS
31	ALUMINUM	67	FOUR WHEEL MOLDING COMPOUND		
32	ALUMINUM	68	FOUR WHEEL MOLDING COMPOUND		
33	ALUMINUM	69	FOUR WHEEL MOLDING COMPOUND		
34	ALUMINUM	70	FOUR WHEEL MOLDING COMPOUND		

ALPHABETICAL ORDER

MAT'L. NAME	CODE ABBR.	MAT'L. NAME	CODE ABBR.	MAT'L. NAME	CODE ABBR.	MAT'L. NAME	CODE ABBR.
ABS PLASTIC	80	GOLD	20	STEEL	81	STEEL	81
ACRYLIC	81	HEAVY	21	STEEL	82	STEEL	82
ADHESIVE	82	HRSA	22	STEEL	83	STEEL	83
ALUMINUM	01	HRSD	23	STEEL	84	STEEL	84
ALUMINUM	02	HRSE	24	STEEL	85	STEEL	85
ALUMINUM	03	HRSF	25	STEEL	86	STEEL	86
ALUMINUM	04	HRSG	26	STEEL	87	STEEL	87
ALUMINUM	05	HRSH	27	STEEL	88	STEEL	88
ALUMINUM	06	HRSI	28	STEEL	89	STEEL	89
ALUMINUM	07	HRSJ	29	STEEL	90	STEEL	90
ALUMINUM	08	HRSK	30	STEEL	91	STEEL	91
ALUMINUM	09	HRSL	31	STEEL	92	STEEL	92
ALUMINUM	10	HRSM	32	STEEL	93	STEEL	93
ALUMINUM	11	HRSN	33	STEEL	94	STEEL	94
ALUMINUM	12	HRSO	34	STEEL	95	STEEL	95
ALUMINUM	13	HRSP	35	STEEL	96	STEEL	96
ALUMINUM	14	HRSQ	36	STEEL	97	STEEL	97
ALUMINUM	15	HRSR	37	STEEL	98	STEEL	98
ALUMINUM	16	HRSS	38	STEEL	99	STEEL	99
ALUMINUM	17	HRST	39	STEEL	00	STEEL	00
ALUMINUM	18	HRSU	40	STEEL			
ALUMINUM	19	HRSV	41	STEEL			
ALUMINUM	20	HRSW	42	STEEL			
ALUMINUM	21	HRSX	43	STEEL			
ALUMINUM	22	HRSY	44	STEEL			
ALUMINUM	23	HRSZ	45	STEEL			
ALUMINUM	24	HRTA	46	STEEL			
ALUMINUM	25	HRTE	47	STEEL			
ALUMINUM	26	HRTH	48	STEEL			
ALUMINUM	27	HRTI	49	STEEL			
ALUMINUM	28	HRTO	50	STEEL			
ALUMINUM	29	HRTP	51	STEEL			
ALUMINUM	30	HRTR	52	STEEL			
ALUMINUM	31	HRTS	53	STEEL			
ALUMINUM	32	HRTU	54	STEEL			
ALUMINUM	33	HRTV	55	STEEL			
ALUMINUM	34	HRTW	56	STEEL			
ALUMINUM	35	HRTX	57	STEEL			
ALUMINUM	36	HRTY	58	STEEL			
ALUMINUM	37	HRTZ	59	STEEL			
ALUMINUM	38	HRUA	60	STEEL			
ALUMINUM	39	HRUB	61	STEEL			
ALUMINUM	40	HRUC	62	STEEL			
ALUMINUM	41	HRUD	63	STEEL			
ALUMINUM	42	HRUE	64	STEEL			
ALUMINUM	43	HRUF	65	STEEL			
ALUMINUM	44	HRUG	66	STEEL			
ALUMINUM	45	HRUH	67	STEEL			
ALUMINUM	46	HRUI	68	STEEL			
ALUMINUM	47	HRUJ	69	STEEL			
ALUMINUM	48	HRUK	70	STEEL			
ALUMINUM	49	HRUL	71	STEEL			
ALUMINUM	50	HRUM	72	STEEL			
ALUMINUM	51	HRUN	73	STEEL			
ALUMINUM	52	HRUO	74	STEEL			
ALUMINUM	53	HRUP	75	STEEL			
ALUMINUM	54	HRUR	76	STEEL			
ALUMINUM	55	HRUS	77	STEEL			
ALUMINUM	56	HRUT	78	STEEL			
ALUMINUM	57	HRUV	79	STEEL			
ALUMINUM	58	HRUW	80	STEEL			
ALUMINUM	59	HRUX	81	STEEL			
ALUMINUM	60	HRUY	82	STEEL			
ALUMINUM	61	HRUZ	83	STEEL			
ALUMINUM	62	HRVA	84	STEEL			
ALUMINUM	63	HRVB	85	STEEL			
ALUMINUM	64	HRVC	86	STEEL			
ALUMINUM	65	HRVD	87	STEEL			
ALUMINUM	66	HRVE	88	STEEL			
ALUMINUM	67	HRVF	89	STEEL			
ALUMINUM	68	HRVG	90	STEEL			
ALUMINUM	69	HRVH	91	STEEL			
ALUMINUM	70	HRVI	92	STEEL			
ALUMINUM	71	HRVJ	93	STEEL			
ALUMINUM	72	HRVK	94	STEEL			
ALUMINUM	73	HRVL	95	STEEL			
ALUMINUM	74	HRVM	96	STEEL			
ALUMINUM	75	HRVN	97	STEEL			
ALUMINUM	76	HRVO	98	STEEL			
ALUMINUM	77	HRVP	99	STEEL			
ALUMINUM	78	HRVR	00	STEEL			
ALUMINUM	79	HRVS					
ALUMINUM	80	HRVT					
ALUMINUM	81	HRVU					
ALUMINUM	82	HRVV					
ALUMINUM	83	HRVW					
ALUMINUM	84	HRVX					
ALUMINUM	85	HRVY					
ALUMINUM	86	HRVZ					
ALUMINUM	87	HRWA					
ALUMINUM	88	HRWB					
ALUMINUM	89	HRWC					
ALUMINUM	90	HRWD					
ALUMINUM	91	HRWE					
ALUMINUM	92	HRWF					
ALUMINUM	93	HRWG					
ALUMINUM	94	HRWH					
ALUMINUM	95	HRWI					
ALUMINUM	96	HRWJ					
ALUMINUM	97	HRWK					
ALUMINUM	98	HRWL					
ALUMINUM	99	HRWM					
ALUMINUM	00	HRVN					

PART NUMBERING SYSTEM

The part numbers are derived from a "Master Bill of Material" that contains all of the component parts and subassemblies for a given assembly or system. Thus a glove compartment release knob for a Chevrolet will appear on the same line of its Bill of Material, and have the same item number as any glove compartment release knob for any vehicle in the study. Following is a detailed breakdown and explanation of the numbering system.

Ford (Full Size) 04	1983	Board 4 (Seat Back Pad) 4	Border Wire 04A
---------------------------	------	---------------------------------	--------------------

Vehicle	Year	Photograph Number	Item Number
The first and second numbers indicate mfg. and model (car size) (01-22).	The third and fourth numbers indicate the year (1963-1983).	The fifth number is the photograph board number (1-7).	The sixth, seventh and eighth (when necessary) numbers indicate the part as it appears on the Master Part List, Detail Process Sheet, Computer Cost Sheet and Photograph.

VEHICLE- TOT

DESCRIPTION	ITEM NO.	QTY	MATL	WEIGHT	MATERIAL	LABOR	BURDEN	TOTAL	PRICE	CONSUMER
TOTAL COST ALL PARTS										
CHEVROLET IMPALA/CAPRICE	01	1		10.9678	3.9076	1.5914	2.7722	8.2712	11.8850	13.5000
FORD FAIRLANE/LTD	05	1		11.7008	4.2690	2.0500	3.7052	10.0242	14.4028	16.3614
CHRYSLER/PLYMOUTH VALIANT/RELIANT	09	1		9.3336	3.2490	1.9564	3.1030	8.3084	11.9380	13.5614
AMC AMERICAN/GREMLIN/ALLIANCE	10	1		13.9594	4.1446	2.3156	3.8336	10.2938	14.7906	16.8020
TOYOTA CORONA/TERCEL	11	1		5.2744	2.3924	1.5482	2.7080	6.6486	9.5532	10.8526
NISSAN SENTRA	12	1		1.5794	.7238	.7800	1.4652	2.9690	4.2660	4.8464
CHEVROLET C-10 PICK-UP	13	1		2.5304	.9694	.8530	1.3042	3.1266	4.4926	5.1042
CHEVROLET S-10 PICK-UP	14	1		1.7106	.7524	.5804	.8842	2.2170	3.1852	3.6184
FORD F-100/F-150 PICK-UP	15	1		3.3666	1.1578	.9294	1.6282	3.7154	5.3386	6.0644
FORD RANGER PICK-UP	16	1		1.8218	.5462	.3510	.7118	1.6090	2.3118	2.6260
CHEVROLET BLAZER	17	1		1.4634	.6396	.5678	.8540	2.0614	2.9622	3.3654
FORD BRONCO	18	1		3.3362	.9726	.6806	1.3798	3.0330	4.3574	4.9492
DODGE RAM CHARGER	19	1		2.2198	.8806	.9380	1.5428	3.3614	4.8296	5.4860
JEEP CJ	20	1		2.8230	1.3084	3.5784	3.9060	8.7928	12.6352	14.3542
DATSUN/NISSAN PICK-UP	21	1		3.0650	1.2322	1.1958	1.9630	4.3810	6.2948	7.1514
TOYOTA PICK-UP	22	1		7.8966	2.5998	1.2308	2.0572	5.8878	8.4604	9.6112

VEHICLE- 01- CHEVROLET IMPALA/CAPRICE

DESCRIPTION	ITEM NO.	QTY	MATL	WEIGHT	MATERIAL	LABOR	BURDEN	TOTAL	PRICE	CONSUMER PRICE	TOOLING
CHEVROLET IMPALA/CAPRICE		1		10.9678	3.9076	1.5914	2.7722	8.2712	11.8850	13.5000	450.0
ASM - FRONT S/BELT OUTBOARD ANCHOR	167701	2	ASSY	.2640	.0818	.0626	.1120	.2564	.3684	.4184	2.0
ASM - FRONT S/BELT INBOARD ANCHOR	167711	2	ASSY	1.2952	.3592	.1830	.2818	.8240	1.1840	1.3450	23.0
ASM - REAR S/BELT OUTBOARD ANCHOR	167721	2	ASSY	1.2952	.3592	.1830	.2818	.8240	1.1840	1.3450	23.0
ASM - REAR S/BELT INBOARD ANCHOR	167731	2	ASSY	1.2952	.3592	.1830	.2818	.8240	1.1840	1.3450	23.0
ASM - FRONT S/BELT OUTBOARD ANCHOR	172701	2	ASSY	.2400	.1568	.0440	.0428	.2436	.3500	.3976	2.0
ASM - FRONT S/BELT INBOARD ANCHOR	172711	2	ASSY	1.0620	.4066	.1320	.2412	.7798	1.1206	1.2728	39.0
ASM - REAR S/BELT OUTBOARD ANCHOR	172721	2	ASSY	1.0558	.4048	.1320	.2412	.7780	1.1180	1.2698	39.0
ASM - REAR S/BELT INBOARD ANCHOR	172731	2	ASSY	1.0620	.4066	.1320	.2412	.7798	1.1206	1.2728	39.0
ASM - SHOULDER BELT UPPER ANCHOR	172741	2	ASSY	.0480	.1090	.0472	.0464	.2026	.2912	.3308	2.0
ASM - FRONT S/BELT OUTBOARD ANCHOR	183701	2	ASSY	.3884	.1532	.0818	.1670	.4020	.5776	.6560	37.0
ASM - FRONT S/BELT INBOARD ANCHOR	183711	2	ASSY	.7688	.2968	.0924	.1670	.5462	.7848	.8914	37.0
ASM - REAR S/BELT OUTBOARD ANCHOR	183721	2	ASSY	.7688	.2968	.0924	.1670	.5462	.7848	.8914	37.0
ASM - REAR S/BELT INBOARD ANCHOR	183731	2	ASSY	.7688	.2968	.0924	.1670	.5462	.7848	.8914	37.0
ASM - SHOULDER BELT UPPER ANCHOR	183741	2	ASSY	.3330	.1256	.0818	.1670	.3744	.5380	.6112	55.0
ASM - SHOULDER BELT LOWER ANCHOR	183751	2	ASSY	.3226	.0952	.0818	.1670	.3440	.4942	.5614	55.0
ASSEMBLY COST											
ASM - FRONT S/BELT OUTBOARD ANCHOR	167701	2	ASSY	.1320	.0409	.0313	.0560	.1282	.1842	.2092	2.0
NUT	167703	1	STL	.1320	.0400			.0400	.0575	.0653	
ASSEMBLY COST					.0009	.0313	.0560	.0882	.1267	.1439	2.0
ASM - FRONT S/BELT INBOARD ANCHOR	167711	2	ASSY	.6476	.1796	.0915	.1409	.4120	.5920	.6725	23.0
ASM - ANCHOR FLATE	167714	1	ASSY	.6476	.1787	.0602	.0849	.3238	.4653	.5286	21.0
ASSEMBLY COST					.0009	.0313	.0560	.0882	.1267	.1439	2.0

VEHICLE- 01- CHEVROLET IMPALA/CAPRICE

DESCRIPTION	ITEM NO.	QTY	MATL	WEIGHT	MATERIAL	LABOR	BURDEN	TOTAL	PRICE	PRICE	CONSUMER
ASM - ANCHOR PLATE	167714	1	21ASSY	.6476	.1787	.0602	.0849	.3238	.4653		.5286
ANCHOR - INBOARD FRONT	167712	1	1HRS	.5156	.1381	.0288	.0546	.2215	.3183		.3616
NUT	167713	1	1STL	.1320	.0400			.0400	.0575		.0653
ASSEMBLY COST					.0006	.0314	.0303	.0623	.0895		.1017
ASM - REAR S/BELT OUTBOARD ANCHOR	167721	1	21ASSY	.6476	.1796	.0915	.1409	.4120	.5920		.6725
ASM - ANCHOR PLATE	167724	1	1ASSY	.6476	.1787	.0602	.0849	.3238	.4653		.5286
ASSEMBLY COST					.0009	.0313	.0560	.0882	.1267		.1439
ASM - ANCHOR PLATE	167724	1	21ASSY	.6476	.1787	.0602	.0849	.3238	.4653		.5286
ANCHOR - OUTBOARD REAR	167722	1	1HRS	.5156	.1381	.0288	.0546	.2215	.3183		.3616
NUT	167723	1	1STL	.1320	.0400			.0400	.0575		.0653
ASSEMBLY COST					.0006	.0314	.0303	.0623	.0895		.1017
ASM - REAR S/BELT INBOARD ANCHOR	167731	1	21ASSY	.6476	.1796	.0915	.1409	.4120	.5920		.6725
ASM - ANCHOR PLATE	167734	1	1ASSY	.6476	.1787	.0602	.0849	.3238	.4653		.5286
ASSEMBLY COST					.0009	.0313	.0560	.0882	.1267		.1439
ASM - ANCHOR PLATE	167734	1	21ASSY	.6476	.1787	.0602	.0849	.3238	.4653		.5286
ANCHOR - INBOARD REAR	167732	1	1HRS	.5156	.1381	.0288	.0546	.2215	.3183		.3616
NUT	167733	1	1STL	.1320	.0400			.0400	.0575		.0653
ASSEMBLY COST					.0006	.0314	.0303	.0623	.0895		.1017
ASM - FRONT S/BELT OUTBOARD ANCHOR	172701	1	21ASSY	.1200	.0784	.0220	.0214	.1218	.1750		.1988
NUT	172703	1	1HRS	.1200	.0780			.0780	.1121		.1273
ASSEMBLY COST					.0004	.0220	.0214	.0438	.0629		.0715
ASM - FRONT S/BELT INBOARD ANCHOR	172711	1	21ASSY	.5310	.2033	.0660	.1206	.3899	.5603		.6364
ASM - ANCHOR PLATE	172714	1	1ASSY	.5310	.2024	.0347	.0646	.3017	.4336		.4925
ASSEMBLY COST					.0009	.0313	.0560	.0882	.1267		.1439

VEHICLE- 01- CHEVROLET IMPALA/CAPRICE

DESCRIPTION	ITEM NO.	QTY	MATERIAL	WEIGHT	VARIABLE MANUFACTURING COST	LABOR	KURDEN	TOTAL	PRICE	CONSUMER PRICE	TOOLING
-------------	----------	-----	----------	--------	-----------------------------	-------	--------	-------	-------	----------------	---------

ASM - ANCHOR PLATE	172714	2	1ASSY	.5310	.2024	.0347	.0646	.3017	.4336	.4925	37.0
--------------------	--------	---	-------	-------	-------	-------	-------	-------	-------	-------	------

PLATE - INBOARD FRONT	172712	1	1HRS	.4110	.1240	.0159	.0468	.1867	.2683	.3048	35.0
-----------------------	--------	---	------	-------	-------	-------	-------	-------	-------	-------	------

NUT	172713	1	1HRS	.1200	.0780			.0780	.1121	.1273	
-----	--------	---	------	-------	-------	--	--	-------	-------	-------	--

ASSEMBLY COST					.0004	.0188	.0178	.0370	.0532	.0604	2.0
---------------	--	--	--	--	-------	-------	-------	-------	-------	-------	-----

ASM - REAR S/BELT OUTBOARD ANCHOR	172721	2	1ASSY	.5279	.2024	.0660	.1206	.3890	.5590	.6349	39.0
-----------------------------------	--------	---	-------	-------	-------	-------	-------	-------	-------	-------	------

ASM - ANCHOR PLATE	172724	1	1ASSY	.5279	.2015	.0347	.0646	.3008	.4323	.4910	37.0
--------------------	--------	---	-------	-------	-------	-------	-------	-------	-------	-------	------

ASSEMBLY COST					.0009	.0313	.0560	.0882	.1267	.1439	2.0
---------------	--	--	--	--	-------	-------	-------	-------	-------	-------	-----

ASM - ANCHOR PLATE	172724	2	1ASSY	.5279	.2015	.0347	.0646	.3008	.4323	.4910	37.0
--------------------	--------	---	-------	-------	-------	-------	-------	-------	-------	-------	------

PLATE - OUTBOARD FRONT	172722	1	1HRS	.4079	.1231	.0159	.0468	.1858	.2670	.3033	35.0
------------------------	--------	---	------	-------	-------	-------	-------	-------	-------	-------	------

NUT	172723	1	1HRS	.1200	.0780			.0780	.1121	.1273	
-----	--------	---	------	-------	-------	--	--	-------	-------	-------	--

ASSEMBLY COST					.0004	.0188	.0178	.0370	.0532	.0604	2.0
---------------	--	--	--	--	-------	-------	-------	-------	-------	-------	-----

ASM - REAR S/BELT INBOARD ANCHOR	172731	2	1ASSY	.5310	.2033	.0660	.1206	.3899	.5603	.6364	39.0
----------------------------------	--------	---	-------	-------	-------	-------	-------	-------	-------	-------	------

ASM - ANCHOR PLATE	172734	1	1ASSY	.5310	.2024	.0347	.0646	.3017	.4336	.4925	37.0
--------------------	--------	---	-------	-------	-------	-------	-------	-------	-------	-------	------

ASSEMBLY COST					.0009	.0313	.0560	.0882	.1267	.1439	2.0
---------------	--	--	--	--	-------	-------	-------	-------	-------	-------	-----

ASM - ANCHOR PLATE	172734	2	1ASSY	.5310	.2024	.0347	.0646	.3017	.4336	.4925	37.0
--------------------	--------	---	-------	-------	-------	-------	-------	-------	-------	-------	------

PLATE - INBOARD REAR	172732	1	1HRS	.4110	.1240	.0159	.0468	.1867	.2683	.3048	35.0
----------------------	--------	---	------	-------	-------	-------	-------	-------	-------	-------	------

NUT	172733	1	1HRS	.1200	.0780			.0780	.1121	.1273	
-----	--------	---	------	-------	-------	--	--	-------	-------	-------	--

ASSEMBLY COST					.0004	.0188	.0178	.0370	.0532	.0604	2.0
---------------	--	--	--	--	-------	-------	-------	-------	-------	-------	-----

ASM - SHOULDER BELT UPPER ANCHOR	172741	2	1ASSY	.0240	.0545	.0236	.0232	.1013	.1456	.1654	2.0
----------------------------------	--------	---	-------	-------	-------	-------	-------	-------	-------	-------	-----

NUT	172743	2	1HRS	.0240	.0540			.0540	.0776	.0882	
-----	--------	---	------	-------	-------	--	--	-------	-------	-------	--

ASSEMBLY COST					.0005	.0236	.0232	.0473	.0680	.0772	2.0
---------------	--	--	--	--	-------	-------	-------	-------	-------	-------	-----

ASM - FRONT S/BELT OUTBOARD ANCHOR	183701	2	1ASSY	.1942	.0766	.0409	.0835	.2010	.2888	.3280	37.0
------------------------------------	--------	---	-------	-------	-------	-------	-------	-------	-------	-------	------

ANCHOR - OUTBOARD FRONT	183702	1	1HRS	.1942	.0757	.0096	.0275	.1128	.1621	.1841	35.0
-------------------------	--------	---	------	-------	-------	-------	-------	-------	-------	-------	------

ASSEMBLY COST					.0009	.0313	.0560	.0882	.1267	.1439	2.0
---------------	--	--	--	--	-------	-------	-------	-------	-------	-------	-----

VEHICLE- 01- CHEVROLET IMPALA/CAPRICE

DESCRIPTION	ITEM NO.	QTY	UNIT	WEIGHT	MATERIAL	LABOR	BURDEN	TOTAL	PRICE	PRICE	TOOLING
ASM - FRONT S/BELT INBOARD ANCHOR	183711	2	ASSY	.3844	.1484	.0412	.0835	.2731	.3924	.4457	37.0
ANCHOR - INBOARD FRONT	183712	1	HRS	.3844	.1475	.0099	.0275	.1849	.2657	.3018	35.0
ASSEMBLY COST					.0009	.0313	.0560	.0882	.1267	.1439	2.0
ASM - REAR S/BELT OUTBOARD ANCHOR	183721	2	ASSY	.3844	.1484	.0412	.0835	.2731	.3924	.4457	37.0
ANCHOR - OUTBOARD REAR	183722	1	HRS	.3844	.1475	.0099	.0275	.1849	.2657	.3018	35.0
ASSEMBLY COST					.0009	.0313	.0560	.0882	.1267	.1439	2.0
ASM - REAR S/BELT INBOARD ANCHOR	183731	2	ASSY	.3844	.1484	.0412	.0835	.2731	.3924	.4457	37.0
ANCHOR - INBOARD REAR	183732	1	HRS	.3844	.1475	.0099	.0275	.1849	.2657	.3018	35.0
ASSEMBLY COST					.0009	.0313	.0560	.0882	.1267	.1439	2.0
ASM - SHOULDER BELT UPPER ANCHOR	183741	2	ASSY	.1665	.0628	.0409	.0835	.1872	.2690	.3056	55.0
ANCHOR - UPPER SHOULDER BELT	183742	1	HRS	.1665	.0619	.0096	.0275	.0990	.1423	.1617	35.0
ASSEMBLY COST					.0009	.0313	.0560	.0882	.1267	.1439	20.0
ASM - SHOULDER BELT LOWER ANCHOR	183751	2	ASSY	.1613	.0476	.0409	.0835	.1720	.2471	.2807	55.0
ANCHOR - LOWER SHOULDER BELT	183752	1	HRS	.1613	.0467	.0096	.0275	.0838	.1204	.1368	35.0
ASSEMBLY COST					.0009	.0313	.0560	.0882	.1267	.1439	20.0

COMPONENT NO	NAME	PRE		POST		TREND		POST/PRE TREND/PRE		TREND/POST	
		FCS RQD	WEIGHT #	FCS RQD	WEIGHT #	\$ COST	WGT #	\$ COST	WGT #	\$ COST	WGT #
01 ASM	FRONT S/BELT OUTBOARD ANCHOR	2	.26	2	.24	2	.40	2	.02	2	.14
			.26		.24		.39		.02		.13
02 PLATE		2		2		2	.23			2	.23
							.39				.39
03 NUT		2	.08	2	.16		.39	2	.08		.16
			.26		.24		.02		.02		.24
11 ASM	FRONT S/BELT INBOARD ANCHOR	2	.82	2	.78	2	.55	2	.04	2	.27
			1.30		1.06		.77		.24		.53
14 ASM	ANCHOR PLATE	2	.65	2	.60	2	.77	2	.05	2	.65
			1.30		1.06		.24		.24		1.30
12 PLATE		2	.44	2	.37	2	.37	2	.07	2	.07
			1.03		.82		.77		.21		.26
13 NUT		2	.08	2	.16		.08	2	.08		.08
			.26		.24		.02		.02		.26
21 ASM	REAR S/BELT OUTBOARD ANCHOR	2	.82	2	.78	2	.55	2	.04	2	.27
			1.30		1.06		.77		.24		.53
24 ASM	ANCHOR PLATE	2	.65	2	.60	2	.77	2	.05	2	.65
			1.30		1.06		.24		.24		1.30
22 PLATE		2	.44	2	.37	2	.37	2	.07	2	.07
			1.03		.82		.77		.21		.26
23 NUT		2	.08	2	.16		.08	2	.08		.08
			.26		.24		.02		.02		.26
31 ASM	REAR S/BELT INBOARD ANCHOR	2	.82	2	.78	2	.55	2	.04	2	.27
			1.30		1.06		.77		.24		.53
34 ASM	ANCHOR PLATE	2	.65	2	.60	2	.77	2	.05	2	.65
			1.30		1.06		.24		.24		1.30
32 PLATE		2	.44	2	.37	2	.37	2	.07	2	.07
			1.03		.82		.77		.21		.26
33 NUT		2	.08	2	.16		.08	2	.08		.08
			.26		.24		.02		.02		.26
41 ASM	SHOULDER BELT UPPER ANCHOR	2	.20	2	.20	2	.37	2	.20	2	.37
			.05		.05		.33		.05		.33
42 PLATE		2		2		2	.20	2		2	.20
							.33				.33
43 NUT		4		4		4	.22	4		4	.22
			.10		.10		.10		.10		.10
51 ASM	SHOULDER BELT LOWER ANCHOR	2		2		2	.34	2		2	.34
							.32				.32
52 PLATE		2		2		2	.17	2		2	.17
							.32				.32

CAPRICE BOARD 7

TREND

POST

PRE



1

11

21

31

41

51

VEHICLE- 05- FORD FAIRLANE/LTD

DESCRIPTION	ITEM NO.	QTY	MATL	WEIGHT	MATERIAL	LABOR	BURDEN	TOTAL	WHOLESALE PRICE	CONSUMER PRICE	TOOLING
FORD FAIRLANE/LTD.											
ASM - FRONT S/BELT OUTBOARD ANCHOR	67701	2	ASSY	3.444	1.430	.1628	.2694	.5752	.8264	.9388	54.0
ASM - FRONT S/BELT INBOARD ANCHOR	67711	2	ASSY	.8386	.3172	.1194	.2442	.6808	.9782	1.1112	52.0
ASM - REAR S/BELT OUTBOARD ANCHOR	67721	2	ASSY	.3734	.1036	.1126	.2230	.4392	.6310	.7168	52.0
ASM - REAR S/BELT INBOARD ANCHOR	67731	2	ASSY	2.2046	.7480	.2172	.4068	1.3720	1.9714	2.2396	79.0
ASM - FRONT S/BELT OUTBOARD ANCHOR	73701	2	ASSY	1.4606	.5670	.1126	.2230	.9026	1.2970	1.4734	47.0
ASM - FRONT S/BELT INBOARD ANCHOR	73711	2	ASSY	1.0890	.4416	.1446	.2558	.8420	1.2098	1.3744	39.0
ASM - REAR S/BELT OUTBOARD ANCHOR	73721	2	ASSY	.3508	.1424	.1446	.2520	.5390	.7744	.8796	29.0
ASM - REAR S/BELT INBOARD ANCHOR	73731	2	ASSY	2.4290	.9266	.2424	.4146	1.5836	2.2754	2.5848	56.0
ASM - SHOULDER BELT UPPER ANCHOR	73741	2	ASSY	.0828	.0678	.0626	.1120	.2424	.3482	.3954	2.0
ASM - FRONT S/BELT OUTBOARD ANCHOR	83701	2	ASSY	.4048	.1532	.1428	.2240	.5200	.7472	.8488	13.0
ASM - FRONT S/BELT INBOARD ANCHOR	83711	2	ASSY	1.2572	.3678	.1898	.3114	.8690	1.2486	1.4184	28.0
ASM - REAR S/BELT OUTBOARD ANCHOR	83721	2	ASSY	.1236	.0364	.0818	.1686	.2868	.4120	.4680	12.0
ASM - REAR S/BELT INBOARD ANCHOR	83731	2	ASSY	.1236	.0364	.0818	.1686	.2868	.4120	.4680	12.0
ASM - SHOULDER BELT UPPER ANCHOR	83741	2	ASSY	.1236	.0364	.0818	.1686	.2868	.4120	.4680	12.0
ASM - SHOULDER BELT LOWER ANCHOR	83751	2	ASSY	.4948	.1816	.1532	.2632	.5980	.8592	.9762	13.0
ASSEMBLY COST											

ASM - FRONT S/BELT OUTBOARD ANCHOR	67701	2	ASSY	.1722	.0715	.0814	.1347	.2876	.4132	.4674	54.0
ASM - ANCHOR PLATE	67704	1	ASSY	.1722	.0706	.0501	.0787	.1994	.2865	.3255	52.0
ASSEMBLY COST					.0009	.0313	.0560	.0882	.1267	.1439	2.0
ASM - ANCHOR PLATE	67704	2	ASSY	.1722	.0706	.0501	.0787	.1994	.2865	.3255	52.0
ANCHOR - OUTBOARD FRONT	67702	1	HRS	.1402	.0411	.0250	.0555	.1216	.1747	.1985	50.0

VEHICLE- 05- FORD FAIRLANE/LTD

DESCRIPTION	ITEM NO.	QTY	MATL	WEIGHT	MATERIAL	VARIABLE MANUFACTURING COST	TOTAL	WHOLESALE PRICE	CONSUMER PRICE
WELD STUD - ANCHOR	167703	1	HRS	.0320	.0290	.0290	.0290	.0417	.0474
ASSEMBLY COST					.0005	.0251	.0488	.0701	.0796
ASM - FRONT S/BELT INBOARD ANCHOR	167711	2	ASSY	.4193	.1586	.1221	.3404	.4891	.5556
ANCHOR - INBOARD FRONT	167712	1	HRS	.4193	.1577	.0284	.2522	.3624	.4117
ASSEMBLY COST					.0009	.0313	.0882	.1267	.1439
ASM - REAR S/BELT OUTBOARD ANCHOR	167721	2	ASSY	.1867	.0518	.1115	.2196	.3155	.3584
ANCHOR - OUTBOARD REAR	167722	1	HRS	.1867	.0509	.0250	.1314	.1888	.2145
ASSEMBLY COST					.0009	.0313	.0882	.1267	.1439
ASM - REAR S/BELT INBOARD ANCHOR	167731	2	ASSY	1.1023	.3740	.1086	.6860	.9857	1.1198
ASM - ANCHOR & BASE PLATE	167736	1	ASSY	1.1023	.3731	.1474	.5978	.8590	.9759
ASSEMBLY COST					.0009	.0313	.0882	.1267	.1439
ASM - ANCHOR & BASE PLATE	167736	2	ASSY	1.1023	.3731	.1474	.5978	.8590	.9759
ANCHOR - INBOARD REAR	167732	1	HRS	.4193	.1577	.0284	.2522	.3624	.4117
BASE PLATE - INBOARD REAR	167735	1	HRS	.6830	.2148	.0175	.2833	.4071	.4625
ASSEMBLY COST					.0006	.0314	.0623	.0895	.1017
ASM - FRONT S/BELT OUTBOARD ANCHOR	173701	2	ASSY	.7303	.2835	.1115	.4513	.6485	.7367
ANCHOR - OUTBOARD FRONT	173702	1	HRS	.7303	.2826	.0250	.3631	.5218	.5928
ASSEMBLY COST					.0009	.0313	.0882	.1267	.1439
ASM - FRONT S/BELT INBOARD ANCHOR	173711	2	ASSY	.5445	.2208	.0723	.4210	.6049	.6872
ASM - ANCHOR PLATE	173714	1	ASSY	.5445	.2199	.0410	.3328	.4782	.5433
ASSEMBLY COST					.0009	.0313	.0882	.1267	.1439
ASM - ANCHOR PLATE	173714	2	ASSY	.5445	.2199	.0410	.3328	.4782	.5433
ANCHOR - INBOARD FRONT	173712	1	HRS	.4505	.1434	.0159	.2080	.2989	.3396

VEHICLE- 05- FORD FAIRLANE/LTD

DESCRIPTION	ITEM NO.	QTY	MATL	WEIGHT	MATERIAL	LABOR	BURDEN	TOTAL	WHOLESALE PRICE	CONSUMER PRICE	TOOLING
NUT	173713	1	HRS	.0940	.0760			.0760	.1092	.1241	
ASSEMBLY COST					.0005	.0251	.0232	.0488	.0701	.0796	2.0
ASM - REAR S/BELT OUTBOARD ANCHOR	173721	2	ASSY	.1754	.0712	.0723	.1260	.2695	.3872	.4398	29.0
ASM - ANCHOR PLATE	173724	1	ASSY	.1754	.0703	.0410	.0700	.1813	.2605	.2959	27.0
ASSEMBLY COST					.0009	.0313	.0560	.0882	.1267	.1439	2.0
ASM - ANCHOR FLATE	173724	2	ASSY	.1754	.0703	.0410	.0700	.1813	.2605	.2959	27.0
ANCHOR - OUTBOARD REAR	173722	1	HRS	.1564	.0488	.0159	.0468	.1115	.1602	.1820	25.0
NUT	173723	1	HRS	.0190	.0210			.0210	.0302	.0343	
ASSEMBLY COST					.0005	.0251	.0232	.0488	.0701	.0796	2.0
ASM - REAR S/BELT INBOARD ANCHOR	173731	2	ASSY	1.2145	.4633	.1212	.2073	.7918	1.1377	1.2924	56.0
ASM - ANCHOR & BASE PLATE	173736	1	ASSY	1.2145	.4624	.0899	.1513	.7036	1.0110	1.1485	54.0
ASSEMBLY COST					.0009	.0313	.0560	.0882	.1267	.1439	2.0
ASM - ANCHOR FLATE	173734	2	ASSY	.5440	.2443	.0410	.0700	.3553	.5105	.5799	27.0
ANCHOR - INBOARD REAR	173732	1	HRS	.4500	.1678	.0159	.0468	.2305	.3312	.3762	25.0
NUT	173733	1	HRS	.0940	.0760			.0760	.1092	.1241	
ASSEMBLY COST					.0005	.0251	.0232	.0488	.0701	.0796	2.0
ASM - ANCHOR & BASE PLATE	173736	2	ASSY	1.2145	.4624	.0899	.1513	.7036	1.0110	1.1485	54.0
ASM - ANCHOR FLATE	173734	1	ASSY	.5440	.2443	.0410	.0700	.3553	.5105	.5799	27.0
BASE PLATE - INBOARD REAR	173735	1	CRS	.6705	.2175	.0175	.0510	.2860	.4110	.4669	25.0
ASSEMBLY COST					.0006	.0314	.0303	.0623	.0895	.1017	2.0
ASM - SHOULDER BELT UPPER ANCHOR	173741	2	ASSY	.0414	.0339	.0313	.0560	.1212	.1741	.1977	2.0
NUT	173743	1	HRS	.0414	.0330			.0330	.0474	.0538	
ASSEMBLY COST					.0009	.0313	.0560	.0882	.1267	.1439	2.0

VEHICLE- 05- FORD FAIRLANE/LTD

DESCRIPTION	ITEM NO.	QTY	MATERIAL	WEIGHT	VARIABLE MANUFACTURING COST		WHOLESALE CONSUMER				
					LABOR	BURDEN	PRICE	PRICE			
ASM - FRONT S/BELT OUTBOARD ANCHOR	183701	2	1 ASSY	.2024	.0766	.0714	.1120	.2600	.3736	.4244	13.0
ASM - ANCHOR PLATE	183704	1	1 ASSY	.2024	.0757	.0401	.0560	.1718	.2469	.2805	11.0
ASSEMBLY COST					.0009	.0313	.0560	.0882	.1267	.1439	2.0
ASM - ANCHOR PLATE	183704	2	1 ASSY	.2024	.0757	.0401	.0560	.1718	.2469	.2805	11.0
ANCHOR - OUTBOARD FRONT	183702	1	1 HRS	.1198	.0401	.0087	.0257	.0745	.1071	.1217	10.0
NUT	183703	1	1 HRS	.0826	.0350			.0350	.0503	.0571	
ASSEMBLY COST					.0006	.0314	.0303	.0623	.0895	.1017	1.0
ASM - FRONT S/BELT INBOARD ANCHOR	183711	2	1 ASSY	.6286	.1839	.0949	.1557	.4345	.6243	.7092	28.0
ASM - ANCHOR PLATE	183714	1	1 ASSY	.6286	.1830	.0636	.0977	.3463	.4976	.5653	26.0
ANCHOR - INBOARD FRONT	183712	1	1 HRS	.5460	.1474	.0322	.0694	.2490	.3578	.4065	25.0
NUT	183713	1	1 HRS	.0826	.0350			.0350	.0503	.0571	
ASSEMBLY COST					.0006	.0314	.0303	.0623	.0895	.1017	1.0
ASM - REAR S/BELT OUTBOARD ANCHOR	183721	2	1 ASSY	.0618	.0182	.0409	.0843	.1434	.2060	.2340	12.0
ANCHOR - OUTBOARD REAR	183722	1	1 HRS	.0618	.0173	.0096	.0283	.0552	.0793	.0901	10.0
ASSEMBLY COST					.0009	.0313	.0560	.0882	.1267	.1439	2.0
ASM - REAR S/BELT INBOARD ANCHOR	183731	2	1 ASSY	.0618	.0182	.0409	.0843	.1434	.2060	.2340	12.0
ANCHOR - INBOARD REAR	183732	1	1 HRS	.0618	.0173	.0096	.0283	.0552	.0793	.0901	10.0
ASSEMBLY COST					.0009	.0313	.0560	.0882	.1267	.1439	2.0
ASM - SHOULDER BELT UPPER ANCHOR	183741	2	1 ASSY	.0618	.0182	.0409	.0843	.1434	.2060	.2340	12.0
ANCHOR - UPPER SHOULDER BELT	183742	1	1 HRS	.0618	.0173	.0096	.0283	.0552	.0793	.0901	10.0
ASSEMBLY COST					.0009	.0313	.0560	.0882	.1267	.1439	2.0

VEHICLE- 05- FORD FAIRLANE/LTD

DESCRIPTION	ITEM NO.	QTY	MATERIAL	WEIGHT	VARIABLE MANUFACTURING COST			WHOLESALE CONSUMER TOOLING			
					LABOR	BURDEN	TOTAL	PRICE	PRICE	PRICE	000S
ASM - SHOULDER BELT LOWER ANCHOR	183751	1	21ASSY	.2474	.0908	.0766	.1316	.2990	.4296	.4881	13.0
ASM - ANCHOR PLATE	183754	1	11ASSY	.2474	.0899	.0453	.0756	.2108	.3029	.3442	11.0
ASSEMBLY COST					.0009	.0313	.0560	.0882	.1267	.1439	2.0
ASM - ANCHOR PLATE	183754	1	21ASSY	.2474	.0899	.0453	.0756	.2108	.3029	.3442	11.0
ANCHOR - LOWER SHOULDER BELT	183752	1	11HRS	.2244	.0603	.0139	.0453	.1195	.1717	.1951	10.0
NUT	183753	1	11HRS	.0230	.0290			.0290	.0417	.0474	
ASSEMBLY COST					.0006	.0314	.0303	.0623	.0895	.1017	1.0

COMPONENT NO	NAME	PRE		POST		TREND		POST/PRE		TREND/FRE		TREND/FOST	
		PCS	RQD	WEIGHT	COST	WEIGHT	COST	WEIGHT	COST	WEIGHT	COST	WEIGHT	COST
01 ASM	FRONT S/BELT OUTBOARD ANCHOR	2	2	.58	.90	2	.52	.32	.52	.06	.38		
				.34	1.46		1.12	.40	1.12	.06	1.06		
04 ASM	ANCHOR PLATE	2	2	.40	.34	2	.34	.40	.34	.06	.34		
				.34	.40		.40	.34	.40	.06	.40		
02 PLATE		2	2	.24	.73	2	.15	.49	.49	.09	.58		
				.28	1.46		.24	1.18	1.18	.04	1.22		
03 NUT		2	2	.06	.07	2	.06	.07	.06	.01	.07		
				.06	.17		.17	.06	.17	.11	.17		
11 ASM	FRONT S/BELT INBOARD ANCHOR	2	2	.68	.84	2	.87	.16	.87	.19	.03		
				.84	1.09		1.26	.25	1.26	.42	.17		
14 ASM	ANCHOR PLATE	2	2	.67	1.09	2	.69	.67	1.09	.69	.02		
				.84	1.09		1.26	1.09	1.26	1.26	.17		
12 PLATE		2	2	.50	.42	2	.50	.08	.08	.00	.08		
				.84	.90		1.09	.06	.06	.25	.19		
13 NUT		2	2	.15	.15	2	.07	.15	.15	.07	.08		
				.19	.19		.17	.19	.17	.17	.02		
21 ASM	REAR S/BELT OUTBOARD ANCHOR	2	2	.44	.54	2	.29	.10	.29	.15	.25		
				.37	.35		.12	.02	.12	.25	.23		
24 ASM	ANCHOR PLATE	2	2	.36	.36	2	.36	.36	.36	.36	.36		
				.35	.35		.35	.35	.35	.35	.35		
22 PLATE		2	2	.26	.22	2	.11	.04	.11	.15	.11		
				.37	.31		.12	.06	.12	.25	.19		
23 NUT		2	2	.04	.04	2	.04	.04	.04	.04	.04		
				.04	.04		.04	.04	.04	.04	.04		
31 ASM	REAR S/BELT INBOARD ANCHOR	2	2	1.37	1.58	2	.29	.21	.29	1.08	1.29		
				2.20	2.43		.12	.23	.12	2.08	2.31		
36 ASM	ANCHOR PLATE & COVER	2	2	1.20	1.41	2	.21	.21	.21	1.20	1.41		
	OR ASM - ANCHOR & BASE PLATE			2.20	2.43		.23	.23	.23	2.20	2.43		
35 COVER		2	2	.57	.57	2	.57	.57	.57	.57	.57		
	OR BASE PLATE			1.37	1.37		1.37	1.37	1.37	1.37	1.37		
34 ASM	ANCHOR PLATE	2	2	.71	.71	2	.71	.71	.71	.71	.71		
				1.09	1.09		1.09	1.09	1.09	1.09	1.09		
32 PLATE		2	2	.50	.46	2	.11	.04	.11	.39	.35		
				.84	.90		.12	.06	.12	.72	.78		
33 NUT		2	2	.15	.15	2	.15	.15	.15	.15	.15		
				.19	.19		.19	.19	.19	.19	.19		
41 ASM	SHOULDER BELT UPPER ANCHOR	2	2	.24	.24	2	.29	.24	.29	.29	.05		
				.08	.08		.12	.08	.12	.12	.04		
42 PLATE		2	2	.11	.11	2	.11	.11	.11	.11	.11		
				.12	.12		.12	.12	.12	.12	.12		
43 NUT		2	2	.07	.07	2	.07	.07	.07	.07	.07		
				.08	.08		.08	.08	.08	.08	.08		
51 ASM	SHOULDER BELT LOWER ANCHOR	2	2	.60	.60	2	.60	.60	.60	.60	.60		
				.49	.49		.49	.49	.49	.49	.49		
54 ASM	ANCHOR PLATE	2	2	.42	.42	2	.42	.42	.42	.42	.42		
				.49	.49		.49	.49	.49	.49	.49		
52 PLATE		2	2	.24	.24	2	.24	.24	.24	.24	.24		
				.45	.45		.45	.45	.45	.45	.45		
53 NUT		2	2	.06	.06	2	.06	.06	.06	.06	.06		
				.05	.05		.05	.05	.05	.05	.05		

A-14

VEHICLE- 09- CHRY/PLYMOUTH VALIANT/RELIANT

DESCRIPTION	ITEM	NO.1 QTY	UNIT	WEIGHT	MATERIAL	VARIABLE MANUFACTURING COST	TOTAL	PRICE	CONSUMER		
CHRYSLER/PLYMOUTH VALIANT/RELIANT		1		9.3336	3.2490	1.9564	3.1030	8.3084	11.9380	13.5614	400.0
ASM - FRONT S/BELT OUTBOARD ANCHOR	65701	2	ASSY	.3160	.1474	.1378	.2280	.5132	.7374	.8376	24.0
ASM - FRONT S/BELT INBOARD ANCHOR	65711	2	ASSY	1.1816	.3854	.1446	.2520	.7820	1.1236	1.2764	29.0
ASM - REAR S/BELT OUTBOARD ANCHOR	65721	2	ASSY	.0460	.0598	.0626	.1120	.2344	.3368	.3826	1.0
ASM - REAR S/BELT INBOARD ANCHOR	65731	2	ASSY	1.0960	.3512	.1666	.2506	.7684	1.1042	1.2542	19.0
ASM - FRONT S/BELT OUTBOARD ANCHOR	74701	2	ASSY	.0460	.0598	.0626	.1120	.2344	.3368	.3826	1.0
ASM - FRONT S/BELT INBOARD ANCHOR	74711	2	ASSY	1.1380	.3692	.1514	.2276	.7482	1.0750	1.2212	33.0
ASM - REAR S/BELT OUTBOARD ANCHOR	74721	2	ASSY	.3330	.1726	.1464	.2158	.5348	.7684	.8730	13.0
ASM - REAR S/BELT INBOARD ANCHOR	74731	2	ASSY	1.1340	.3032	.1134	.1836	.6002	.8624	.9796	50.0
ASM - SHOULDER BELT UPPER ANCHOR	74741	2	ASSY	.1660	.0940	.1428	.2122	.4490	.6452	.7330	31.0
ASM - SHOULDER BELT LOWER ANCHOR	74751	2	ASSY	.1660	.0940	.1428	.2122	.4490	.6452	.7330	31.0
ASM - FRONT S/BELT OUTBOARD ANCHOR	83701	2	ASSY	.7884	.2634	.1514	.2276	.6424	.9230	1.0486	13.0
ASM - FRONT S/BELT INBOARD ANCHOR	83711	2	ASSY	1.0920	.3048	.0886	.1670	.5604	.8052	.9146	32.0
ASM - REAR S/BELT OUTBOARD ANCHOR	83721	2	ASSY	.0460	.0598	.0626	.1120	.2344	.3368	.3826	1.0
ASM - REAR S/BELT INBOARD ANCHOR	83731	2	ASSY	.8976	.2454	.0886	.1588	.4928	.7080	.8042	50.0
ASM - SHOULDER BELT UPPER ANCHOR	83741	2	ASSY	.7210	.2450	.1514	.2194	.6158	.8848	1.0052	41.0
ASM - SHOULDER BELT LOWER ANCHOR	83751	2	ASSY	.1660	.0940	.1428	.2122	.4490	.6452	.7330	31.0
ASSEMBLY COST											
ASM - FRONT S/BELT OUTBOARD ANCHOR	65701	2	ASSY	.1580	.0737	.0689	.1140	.2566	.3687	.4188	24.0
ASM - ANCHOR PLATE	65704	1	ASSY	.1580	.0728	.0376	.0580	.1684	.2420	.2749	22.0
ASSEMBLY COST											
ASM - ANCHOR PLATE	65704	2	ASSY	.1580	.0728	.0376	.0580	.1684	.2420	.2749	22.0
ANCHOR - OUTBOARD FRONT	65702	1	HRS	.1350	.0433	.0125	.0348	.0904	.1302	.1479	20.0

A-16

VEHICLE- 02 CHEV/ELYMOUTH VALIANT/RELIANT

DESCRIPTION	ITEM NO.	QTY	MATL	WEIGHT	MATERIAL	LABOR	BURDEN	TOTAL	PRICE	PRICE	CONSUMER	TOOLING
NUT	165703	1	HRS	.0230	.0290			.0290	.0417		.0474	
ASSEMBLY COST					.0005	.0251	.0232	.0488	.0701		.0796	2.0
ASM - FRONT S/BELT INBOARD ANCHOR	165711	2	ASSY	.5908	.1927	.0723	.1260	.3910	.5618		.6382	29.0
ASM - ANCHOR PLATE	165714	1	ASSY	.5908	.1918	.0410	.0700	.3028	.4351		.4943	27.0
ASSEMBLY COST					.0009	.0313	.0560	.0882	.1267		.1439	2.0
ASM - ANCHOR PLATE	165714	2	ASSY	.5908	.1918	.0410	.0700	.3028	.4351		.4943	27.0
ANCHOR - INBOARD FRONT	165712	1	HRS	.5678	.1623	.0159	.0468	.2250	.3233		.3673	25.0
NUT	165713	1	HRS	.0230	.0290			.0290	.0417		.0474	
ASSEMBLY COST					.0005	.0251	.0232	.0488	.0701		.0796	2.0
ASM - REAR S/BELT OUTBOARD ANCHOR	165721	2	ASSY	.0230	.0299	.0313	.0560	.1172	.1684		.1913	1.0
NUT	165723	1	HRS	.0230	.0290			.0290	.0417		.0474	
ASSEMBLY COST					.0009	.0313	.0560	.0882	.1267		.1439	1.0
ASM - REAR S/BELT INBOARD ANCHOR	165731	2	ASSY	.5480	.1756	.0833	.1253	.3842	.5521		.6271	19.0
ASM - ANCHOR PLATE	165734	1	ASSY	.5480	.1747	.0520	.0693	.2960	.4254		.4832	17.0
ASSEMBLY COST					.0009	.0313	.0560	.0882	.1267		.1439	2.0
ASM - ANCHOR PLATE	165734	2	ASSY	.5480	.1747	.0520	.0693	.2960	.4254		.4832	17.0
ANCHOR - INBOARD REAR	165732	1	HRS	.5250	.1452	.0269	.0461	.2182	.3136		.3562	15.0
NUT	165733	1	HRS	.0230	.0290			.0290	.0417		.0474	
ASSEMBLY COST					.0005	.0251	.0232	.0488	.0701		.0796	2.0
ASM - FRONT S/BELT OUTBOARD ANCHOR	174701	2	ASSY	.0230	.0299	.0313	.0560	.1172	.1684		.1913	1.0
NUT	174703	1	HRS	.0230	.0290			.0290	.0417		.0474	
ASSEMBLY COST					.0009	.0313	.0560	.0882	.1267		.1439	1.0
ASM - FRONT S/BELT INBOARD ANCHOR	174711	2	ASSY	.5690	.1846	.0757	.1138	.3741	.5375		.6106	33.0
ASM - ANCHOR PLATE	174714	1	ASSY	.5690	.1837	.0444	.0578	.2859	.4108		.4667	31.0
ASSEMBLY COST					.0009	.0313	.0560	.0882	.1267		.1439	2.0

VEHICLE- 09- CHRY/PLYMOUTH VALIANT/RELIANT

DESCRIPTION	ITEM NO.	QTY	MATL	WEIGHT	MATERIAL	LABOR	BURDEN	TOTAL	PRICE	PRICE	CONSUMER	TOOLS
ASM - ANCHOR PLATE	174714	2	ASSY	5.690	.1837	.0444	.0578	.2859	.4108	.4667	31.0	
ANCHOR - INBOARD FRONT	174712	1	HRS	5.460	.1541	.0130	.0275	.1946	.2796	.3176	30.0	
NUT	174713	1	HRS	.0230	.0290			.0290	.0417	.0474		
ASSEMBLY COST					.0006	.0314	.0303	.0623	.0895	.1017	1.0	
ASM - REAR S/BELT OUTBOARD ANCHOR	174721	2	ASSY	1.665	.0863	.0732	.1079	.2674	.3842	.4365	13.0	
ASM - ANCHOR PLATE	174724	1	ASSY	1.665	.0854	.0419	.0519	.1792	.2575	.2926	11.0	
ASSEMBLY COST					.0009	.0313	.0560	.0882	.1267	.1439	2.0	
ASM - ANCHOR PLATE	174724	2	ASSY	1.665	.0854	.0419	.0519	.1792	.2575	.2926	11.0	
ANCHOR - OUTBOARD REAR	174722	1	HRS	1.068	.0348	.0105	.0216	.0669	.0961	.1092	10.0	
WELD STUD	174723	1	HRS	.0597	.0500			.0500	.0719	.0817		
ASSEMBLY COST					.0006	.0314	.0303	.0623	.0895	.1017	1.0	
ASM - REAR S/BELT INBOARD ANCHOR	174731	2	ASSY	5.670	.1516	.0567	.0918	.3001	.4312	.4898	50.0	
ANCHOR - INBOARD REAR	174732	1	HRS	5.670	.1507	.0254	.0358	.2119	.3045	.3459	30.0	
ASSEMBLY COST					.0009	.0313	.0560	.0882	.1267	.1439	20.0	
ASM - SHOULDER BELT UPPER ANCHOR	174741	2	ASSY	.0830	.0470	.0714	.1061	.2245	.3226	.3665	31.0	
ASM - ANCHOR PLATE	174744	1	ASSY	.0830	.0461	.0401	.0501	.1363	.1959	.2226	11.0	
ASSEMBLY COST					.0009	.0313	.0560	.0882	.1267	.1439	20.0	
ASM - ANCHOR PLATE	174744	2	ASSY	.0830	.0461	.0401	.0501	.1363	.1959	.2226	11.0	
ANCHOR - UPPER SHOULDER BELT	174742	1	HRS	.0600	.0165	.0087	.0198	.0450	.0647	.0735	10.0	
NUT	174743	1	HRS	.0230	.0290			.0290	.0417	.0474		
ASSEMBLY COST					.0006	.0314	.0303	.0623	.0895	.1017	1.0	
ASM - SHOULDER BELT LOWER ANCHOR	174751	2	ASSY	.0830	.0470	.0714	.1061	.2245	.3226	.3665	31.0	
ASM - ANCHOR PLATE	174754	1	ASSY	.0830	.0461	.0401	.0501	.1363	.1959	.2226	11.0	
ASSEMBLY COST					.0009	.0313	.0560	.0882	.1267	.1439	20.0	

ASM - ANCHOR PLATE 174734 1 CLASSY 1.0401 .0501 1.3631 1.9591 2.2261 11.0
 ASSEMBLY COST .0007 .0313 .0882 1.2671 1.4391 20.0

COST SUMMARY OF FMVSS #210

VEHICLE- 09-- CHRY/PLYMOUTH VALIANT/RELIANT

DESCRIPTION	ITEM NO.	QTY	MATL	WEIGHT	MATERIAL	VARIABLE MANUFACTURING COST	LABOR	BURDEN	TOTAL	PRICE	CONSUMER	TOOLING
ASM - ANCHOR FLATE	174754	2	CLASSY	.0830	.0461	.0401	.0501	.1363	.1959	.2226	11.0	
ANCHOR - LOWER SHOULDER BELT	174752	1	HRS	.0600	.0165	.0087	.0198	.0450	.0647	.0735	10.0	
NUT	174753	1	HRS	.0230	.0290			.0290	.0474			
ASSEMBLY COST					.0006	.0314	.0303	.0623	.0895	.1017	1.0	
ASM - FRONT S/BELT OUTBOARD ANCHOR	183704	2	CLASSY	.3942	.1317	.0757	.1138	.3212	.4615	.5243	13.0	
ASM - ANCHOR FLATE	183704	1	CLASSY	.3942	.1308	.0444	.0578	.2330	.3348	.3804	11.0	
ASSEMBLY COST					.0009	.0313	.0560	.0882	.1267	.1439	2.0	
ASM - ANCHOR FLATE	183704	2	CLASSY	.3942	.1308	.0444	.0578	.2330	.3348	.3804	11.0	
ANCHOR - OUTBOARD FRONT	183702	1	HRS	.3712	.1012	.0130	.0275	.1417	.2036	.2313	10.0	
NUT	183703	1	HRS	.0230	.0290			.0290	.0474			
ASSEMBLY COST					.0006	.0314	.0303	.0623	.0895	.1017	1.0	
ASM - FRONT S/BELT INBOARD ANCHOR	183744	2	CLASSY	.5460	.1524	.0443	.0835	.2802	.4026	.4573	32.0	
ANCHOR - INBOARD FRONT	183742	1	HRS	.5460	.1515	.0130	.0275	.1920	.2759	.3134	30.0	
ASSEMBLY COST					.0009	.0313	.0560	.0882	.1267	.1439	2.0	
ASM - REAR S/BELT OUTBOARD ANCHOR	183724	2	CLASSY	.0230	.0299	.0313	.0560	.1172	.1684	.1913	1.0	
NUT	183723	1	HRS	.0230	.0290			.0290	.0474	.0474		
ASSEMBLY COST					.0009	.0313	.0560	.0882	.1267	.1439	1.0	
ASM - REAR S/BELT INBOARD ANCHOR	183734	2	CLASSY	.4488	.1227	.0443	.0794	.2464	.3540	.4024	50.0	
ANCHOR - INBOARD REAR	183732	1	HRS	.4488	.1218	.0130	.0234	.1582	.2273	.2582	30.0	
ASSEMBLY COST					.0009	.0313	.0560	.0882	.1267	.1439	20.0	
ASM - SHOULDER BELT UPPER ANCHOR	183744	2	CLASSY	.3605	.1225	.0757	.1097	.3079	.4424	.5026	41.0	
ASM - ANCHOR FLATE	183744	1	CLASSY	.3605	.1216	.0444	.0537	.2197	.3157	.3587	21.0	
ASSEMBLY COST					.0009	.0313	.0560	.0882	.1267	.1439	20.0	

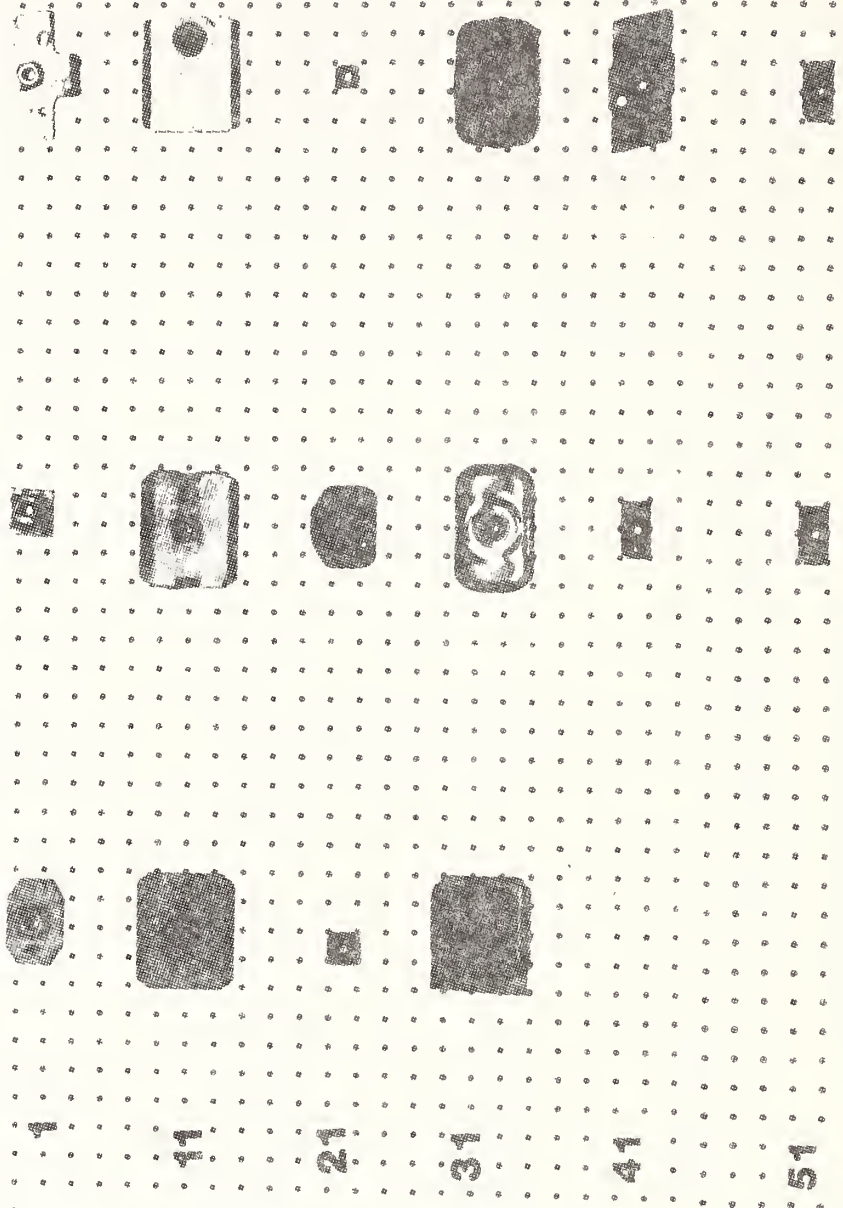
VEHICLE- 09- CHRY/PLYMOUTH VALIANT/RELIANT

DESCRIPTION	ITEM NO.	QTY	MATL	WEIGHT	MATERIAL	VARIABLE MANUFACTURING COST	TOTAL	PRICE	WHOLESALE PRICE	CONSUMER PRICE	LOADING
ASM - ANCHOR PLATE	183744	2	ASSY	.3605	.1216	.0444	.2177	.3157	.3587	21.0	
ANCHOR - UPPER SHOULDER BELT	183742	1	HRS	.3375	.0920	.0130	.1284	.1845	.2096	20.0	
NUT	183743	1	HRS	.0230	.0290		.0220	.0417	.0474		
ASSEMBLY COST					.0006	.0314	.0623	.0895	.1017	1.0	
ASM - SHOULDER BELT LOWER ANCHOR	183751	2	ASSY	.0830	.0470	.0714	.2245	.3226	.3665	31.0	
ASM - ANCHOR PLATE	183754	1	ASSY	.0830	.0461	.0401	.1363	.1959	.2226	11.0	
ASSEMBLY COST					.0009	.0313	.0882	.1267	.1439	20.0	
ASM - ANCHOR PLATE	183754	2	ASSY	.0830	.0461	.0401	.1363	.1959	.2226	11.0	
ANCHOR - LOWER SHOULDER BELT	183752	1	HRS	.0600	.0165	.0087	.0450	.0647	.0735	10.0	
NUT	183753	1	HRS	.0230	.0290		.0290	.0417	.0474		
ASSEMBLY COST					.0006	.0314	.0623	.0895	.1017	1.0	

COMPONENT NO	NAME	PRE			POST			TREND			POST/PRE			TREND/PRE			TREND/POST		
		FCS	\$ COST	RQD	FCS	\$ COST	RQD	WEIGHT	\$	WEIGHT	\$	WGT	\$	WGT	\$	WGT	\$	WGT	\$
01	ASM - FRONT S/BELT OUTBOARD ANCHOR	2	\$.51	2	\$.23	2	\$.64	\$.28-	\$.13	\$.41						
			.32		.05		.79		.27-		.47		.74						
04	ASM - ANCHOR PLATE	2	\$.34	2	\$.47	2	\$.34-	\$.34-	\$.13	\$.47						
			.32		.79		.32-		.32-		.47		.79						
02	PLATE	2	\$.48	2	\$.28	2	\$.18-	\$.18-	\$.10	\$.28						
			.27		.74		.27-		.27-		.47		.74						
03	NUT	2	\$.06	2	\$.06	2	\$.06	\$.00	\$.00	\$.00						
			.05		.05		.05		.00		.00		.00						
11	ASM - FRONT S/BELT INBOARD ANCHOR	2	\$.78	2	\$.75	2	\$.56	\$.03-	\$.22-	\$.19-						
			1.18		1.14		1.09		.04-		.09-		.05-						
14	ASM - ANCHOR PLATE	2	\$.61	2	\$.57	2	\$.61-	\$.61-	\$.61-	\$.57-						
			1.18		1.14		.04-		.04-		1.14-		1.14-						
12	PLATE	2	\$.45	2	\$.39	2	\$.38	\$.06-	\$.07-	\$.01						
			1.14		1.09		1.09		.05-		.05-		.00						
13	NUT	2	\$.06	2	\$.06	2	\$.06	\$.00	\$.06-	\$.06-						
			.05		.05		.05		.00		.05-		.05-						
21	ASM - REAR S/BELT OUTBOARD ANCHOR	2	\$.23	2	\$.53	2	\$.23	\$.30	\$.00	\$.30-						
			.05		.33		.05		.28-		.00		.28-						
24	ASM - ANCHOR PLATE	2	\$.36	2	\$.36	2	\$.36	\$.36	\$.36	\$.36-						
			.33		.33		.33		.33		.33		.33-						
22	PLATE	2	\$.13	2	\$.13	2	\$.13	\$.13	\$.13	\$.13-						
			.21		.21		.21		.21		.21		.21-						
23	NUT OR WELD STUD	2	\$.06	2	\$.10	2	\$.06	\$.04	\$.00	\$.04-						
			.05		.12		.05		.07		.00		.07-						
31	ASM - REAR S/BELT INBOARD ANCHOR	2	\$.77	2	\$.60	2	\$.49	\$.17-	\$.28-	\$.11-						
			1.10		1.13		.90		.03		.20-		.23-						
34	ASM - ANCHOR PLATE	2	\$.59	2	\$.59	2	\$.59-	\$.59-	\$.59-	\$.59-						
			1.10		1.13		1.10-		1.10-		1.10-		1.10-						
32	PLATE	2	\$.44	2	\$.42	2	\$.32	\$.02-	\$.12-	\$.10-						
			1.05		1.13		.90		.08		.15-		.23-						
33	NUT	2	\$.06	2	\$.06	2	\$.06	\$.06-	\$.06-	\$.06-						
			.05		.05		.05		.05-		.05-		.05-						
41	ASM - SHOULDER BELT UPPER ANCHOR	2	\$.45	2	\$.62	2	\$.45	\$.45	\$.62	\$.17						
			.17		.72		.17		.17		.72		.55						
44	ASM - ANCHOR PLATE	2	\$.27	2	\$.44	2	\$.27	\$.27	\$.44	\$.17						
			.17		.72		.17		.17		.72		.55						
42	PLATE	2	\$.09	2	\$.26	2	\$.09	\$.09	\$.26	\$.17						
			.12		.68		.12		.12		.68		.56						
43	NUT	2	\$.06	2	\$.06	2	\$.06	\$.06	\$.06	\$.00						
			.05		.05		.05		.05		.05		.00						
51	ASM - SHOULDER BELT LOWER ANCHOR	2	\$.45	2	\$.45	2	\$.45	\$.45	\$.45	\$.00						
			.17		.17		.17		.17		.17		.00						
54	ASM - ANCHOR PLATE	2	\$.27	2	\$.27	2	\$.27	\$.27	\$.27	\$.00						
			.17		.17		.17		.17		.17		.00						
52	PLATE	2	\$.09	2	\$.09	2	\$.09	\$.09	\$.09	\$.00						
			.12		.12		.12		.12		.12		.00						
53	NUT	2	\$.06	2	\$.06	2	\$.06	\$.06	\$.06	\$.00						
			.05		.05		.05		.05		.05		.00						

PASSENGER VEHICLE

VALIANT VALIANT RELIANT
PRE POST TREND



VEHICLE- 10- AMC AMERICAN/GREMLIN/ALLIANCE

DESCRIPTION	ITEM NO.	QTY	MATL	WEIGHT	MATERIAL	VARIABLE MANUFACTURING LABOR	BURDEN	TOTAL	WHOLESALE PRICE	CONSUMER PRICE	TOOLING
AMC AMERICAN/GREMLIN/ALLIANCE		11		13.9594	4.1446	2.3156	3.8336	10.2938	14.7906	16.8020	324.0
ASM - FRONT S/BELT OUTBOARD ANCHOR	66701	2	ASSY	.4076	.1170	.2582	.3678	.7430	1.0676	1.2128	25.0
ASM - FRONT S/BELT INBOARD ANCHOR	66711	2	ASSY	.4076	.1170	.2582	.3678	.7430	1.0676	1.2128	25.0
ASM - REAR S/BELT OUTBOARD ANCHOR	66721	2	ASSY	.4076	.1170	.2582	.3678	.7430	1.0676	1.2128	25.0
ASM - REAR S/BELT INBOARD ANCHOR	66731	2	ASSY	.4076	.1170	.2582	.3678	.7430	1.0676	1.2128	25.0
ASM - FRONT S/BELT OUTBOARD ANCHOR	73701	2	ASSY	5.9522	1.6040	1.754	3.430	2.1224	3.0498	3.4646	28.0
ASM - FRONT S/BELT INBOARD ANCHOR	73711	2	ASSY	1.3688	.4034	.1588	.2866	.8488	1.2196	1.3854	38.0
ASM - REAR S/BELT OUTBOARD ANCHOR	73721	2	ASSY	2.5396	.8126	.1618	.2974	1.2718	1.8274	2.0760	23.0
ASM - REAR S/BELT INBOARD ANCHOR	73731	2	ASSY	1.3688	.4034	.1618	.2936	.8588	1.2340	1.4018	38.0
ASM - SHOULDER BELT UPPER ANCHOR	73741	2	ASSY	.2618	.1106	.1428	.2240	.4774	.6860	.7794	13.0
ASM - FRONT S/BELT OUTBOARD ANCHOR	83701	2	ASSY	.1236	.0364	.0918	.1686	.2868	.4120	.4680	12.0
ASM - FRONT S/BELT INBOARD ANCHOR	83711	2	ASSY	.1236	.0364	.0818	.1686	.2868	.4120	.4680	12.0
ASM - REAR S/BELT OUTBOARD ANCHOR	83721	2	ASSY	.1236	.0364	.0818	.1686	.2868	.4120	.4680	12.0
ASM - REAR S/BELT INBOARD ANCHOR	83731	2	ASSY	.1236	.0364	.0818	.1686	.2868	.4120	.4680	12.0
ASM - SHOULDER BELT UPPER ANCHOR	83741	2	ASSY	.3434	.1970	.1550	.2434	.5954	.8554	.9716	36.0

ASSEMBLY COST

ASM - FRONT S/BELT OUTBOARD ANCHOR	66701	2	ASSY	.2038	.0585	.1291	.1839	.3715	.5338	.6064	25.0
ASM - ANCHOR FLATE	66704	1	ASSY	.2038	.0576	.0978	.1279	.2833	.4071	.4625	23.0
ASSEMBLY COST					.0009	.0313	.0560	.0882	.1267	.1439	2.0
ASM - ANCHOR FLATE	66704	2	ASSY	.2038	.0576	.0978	.1279	.2833	.4071	.4625	23.0
ANCHOR - OUTBOARD FRONT	66702	1	HRS	.1687	.0463	.0096	.0283	.0842	.1210	.1375	10.0
ANCHOR - OUTBOARD FRONT	66703	1	HRS	.0351	.0097	.0077	.0247	.0421	.0605	.0687	10.0
ASSEMBLY COST					.0016	.0805	.0749	.1570	.2256	.2563	3.0

COST SUMMARY OF FMVSS 210

VEHICLE- 10- AMC AMERICAN/GREMLIN/ALLIANCE

DESCRIPTION	ITEM NO.	QTY	MATERIAL	WEIGHT	VARIABLE MANUFACTURING COST			WHOLESALE CONSUMER TOOLING			
					MATERIAL	LABOR	BURDEN	TOTAL	PRICE	PRICE	PRICE
ASM - FRONT S/BELT INBOARD ANCHOR	166711	2	ASSY	.2038	.0585	.1291	.1839	.3715	.5338	.6064	25.0
ASM - ANCHOR FLATE	166714	1	ASSY	.2038	.0576	.0978	.1279	.2833	.4071	.4625	23.0
ASSEMBLY COST					.0009	.0313	.0560	.0882	.1267	.1439	2.0
ASM - ANCHOR FLATE	166714	2	ASSY	.2038	.0576	.0978	.1279	.2833	.4071	.4625	23.0
ANCHOR - INBOARD FRONT	166712	1	HRS	.1687	.0463	.0096	.0283	.0842	.1210	.1375	10.0
NUT	166713	1	HRS	.0351	.0097	.0077	.0247	.0421	.0605	.0687	10.0
ASSEMBLY COST					.0016	.0805	.0749	.1570	.2256	.2563	3.0
ASM - REAR S/BELT OUTBOARD ANCHOR	166721	2	ASSY	.2038	.0585	.1291	.1839	.3715	.5338	.6064	25.0
ASM - ANCHOR FLATE	166724	1	ASSY	.2038	.0576	.0978	.1279	.2833	.4071	.4625	23.0
ASSEMBLY COST					.0009	.0313	.0560	.0882	.1267	.1439	2.0
ASM - ANCHOR FLATE	166724	2	ASSY	.2038	.0576	.0978	.1279	.2833	.4071	.4625	23.0
ANCHOR - OUTBOARD REAR	166722	1	HRS	.1687	.0463	.0096	.0283	.0842	.1210	.1375	10.0
NUT	166723	1	HRS	.0351	.0097	.0077	.0247	.0421	.0605	.0687	10.0
ASSEMBLY COST					.0016	.0805	.0749	.1570	.2256	.2563	3.0
ASM - REAR S/BELT INBOARD ANCHOR	166731	2	ASSY	.2038	.0585	.1291	.1839	.3715	.5338	.6064	25.0
ASM - ANCHOR FLATE	166734	1	ASSY	.2038	.0576	.0978	.1279	.2833	.4071	.4625	23.0
ASSEMBLY COST					.0009	.0313	.0560	.0882	.1267	.1439	2.0
ASM - ANCHOR FLATE	166734	2	ASSY	.2038	.0576	.0978	.1279	.2833	.4071	.4625	23.0
ANCHOR - INBOARD REAR	166732	1	HRS	.1687	.0463	.0096	.0283	.0842	.1210	.1375	10.0
NUT	166733	1	HRS	.0351	.0097	.0077	.0247	.0421	.0605	.0687	10.0
ASSEMBLY COST					.0016	.0805	.0749	.1570	.2256	.2563	3.0
ASM - FRONT S/BELT OUTBOARD ANCHOR	173701	2	ASSY	2.9761	.8020	.0877	.1715	1.0612	1.5249	1.7323	28.0
ASM - ANCHOR FLATE	173704	1	ASSY	2.9761	.8011	.0564	.1155	.9730	1.3982	1.5884	26.0
ASSEMBLY COST					.0009	.0313	.0560	.0882	.1267	.1439	2.0

A-24

VEHICLE- 10- AMC AMERICAN/GREMLIN/ALLIANCE

DESCRIPTION	ITEM NO.	QTY	MATL	WEIGHT	MATERIAL	LABOR	BURDEN	TOTAL	PRICE	PRICE	TOOLING
ASM - ANCHOR PLATE	173704	2	ASSY	2.9761	.8011	.0564	.1155	.9730	1.3982	1.5884	26.0
ANCHOR - OUTBOARD FRONT	173702	1	HRS	2.9531	.7715	.0250	.0852	.8817	1.2670	1.4393	25.0
NUT	173703	1	HRS	.0230	.0290			.0290	.0417	.0474	
ASSEMBLY COST					.0006	.0314	.0303	.0623	.0895	.1017	1.0
ASM - FRONT S/BELT INBOARD ANCHOR	173711	2	ASSY	.6844	.2017	.0794	.1433	.4244	.6098	.6927	38.0
ASM - ANCHOR PLATE	173714	1	ASSY	.6844	.2008	.0481	.0873	.3362	.4831	.5488	36.0
ASSEMBLY COST					.0009	.0313	.0560	.0882	.1267	.1439	2.0
ASM - ANCHOR PLATE	173714	2	ASSY	.6844	.2008	.0481	.0873	.3362	.4831	.5488	36.0
ANCHOR - INBOARD FRONT	173712	1	HRS	.6591	.1762	.0167	.0570	.2499	.3591	.4079	35.0
NUT	173713	1	HRS	.0253	.0240			.0240	.0345	.0392	
ASSEMBLY COST					.0006	.0314	.0303	.0623	.0895	.1017	1.0
ASM - REAR S/BELT OUTBOARD ANCHOR	173721	2	ASSY	1.2698	.4063	.0809	.1487	.6359	.9137	1.0380	23.0
ASM - ANCHOR PLATE	173724	1	ASSY	1.2698	.4054	.0496	.0927	.5477	.7870	.8941	21.0
ASSEMBLY COST					.0009	.0313	.0560	.0882	.1267	.1439	2.0
ASM - ANCHOR PLATE	173724	2	ASSY	1.2698	.4054	.0496	.0927	.5477	.7870	.8941	21.0
ANCHOR - OUTBOARD REAR	173722	1	HRS	1.2468	.3758	.0182	.0624	.4564	.6558	.7450	20.0
NUT	173723	1	HRS	.0230	.0290			.0290	.0417	.0474	
ASSEMBLY COST					.0006	.0314	.0303	.0623	.0895	.1017	1.0
ASM - REAR S/BELT INBOARD ANCHOR	173731	2	ASSY	.6844	.2017	.0809	.1468	.4294	.6170	.7009	38.0
ASM - ANCHOR PLATE	173734	1	ASSY	.6844	.2008	.0496	.0908	.3412	.4903	.5570	36.0
ASSEMBLY COST					.0009	.0313	.0560	.0882	.1267	.1439	2.0
ASM - ANCHOR PLATE	173734	2	ASSY	.6844	.2008	.0496	.0908	.3412	.4903	.5570	36.0
ANCHOR - INBOARD REAR	173732	1	HRS	.6591	.1762	.0182	.0605	.2549	.3663	.4161	35.0

VEHICLE- 10- AMC AMERICAN/GREMLIN/ALLIANCE

DESCRIPTION	ITEM NO.	QTY	MATL	WEIGHT	MATERIAL	VARIABLE MANUFACTURING COST	LABOR	BURDEN	TOTAL	WHOLESALE PRICE	CONSUMER PRICE	TOOLING
NUT	73733	1	HR	.0253	.0240				.0240	.0345	.0392	
ASSEMBLY COST					.0006	.0314	.0303		.0623	.0895	.1017	1.0
ASM - SHOULDER BELT UPPER ANCHOR	73741	2	ASSY	.1309	.0553	.0714	.1120		.2387	.3430	.3897	13.0
ASM - ANCHOR PLATE	73744	1	ASSY	.1309	.0544	.0401	.0560		.1505	.2163	.2458	11.0
ASSEMBLY COST					.0009	.0313	.0560		.0882	.1267	.1439	2.0
ASM - ANCHOR PLATE	73744	2	ASSY	.1309	.0544	.0401	.0560		.1505	.2163	.2458	11.0
ANCHOR - UPPER SHOULDER BELT	73742	1	HR	.1056	.0298	.0087	.0257		.0642	.0923	.1049	10.0
NUT	73743	1	HR	.0253	.0240				.0240	.0345	.0392	
ASSEMBLY COST					.0006	.0314	.0303		.0623	.0895	.1017	1.0
ASM - FRONT S/BELT OUTBOARD ANCHOR	83701	2	ASSY	.0618	.0182	.0409	.0843		.1434	.2060	.2340	12.0
ANCHOR - OUTBOARD FRONT	83702	1	HR	.0618	.0173	.0096	.0283		.0552	.0793	.0901	10.0
ASSEMBLY COST					.0009	.0313	.0560		.0882	.1267	.1439	2.0
ASM - FRONT S/BELT INBOARD ANCHOR	83711	2	ASSY	.0618	.0182	.0409	.0843		.1434	.2060	.2340	12.0
ANCHOR - INBOARD FRONT	83712	1	HR	.0618	.0173	.0096	.0283		.0552	.0793	.0901	10.0
ASSEMBLY COST					.0009	.0313	.0560		.0882	.1267	.1439	2.0
ASM - REAR S/BELT OUTBOARD ANCHOR	83721	2	ASSY	.0618	.0182	.0409	.0843		.1434	.2060	.2340	12.0
ANCHOR - OUTBOARD REAR	83722	1	HR	.0618	.0173	.0096	.0283		.0552	.0793	.0901	10.0
ASSEMBLY COST					.0009	.0313	.0560		.0882	.1267	.1439	2.0
ASM - REAR S/BELT INBOARD ANCHOR	83731	2	ASSY	.0618	.0182	.0409	.0843		.1434	.2060	.2340	12.0
ANCHOR - INBOARD REAR	83732	1	HR	.0618	.0173	.0096	.0283		.0552	.0793	.0901	10.0
ASSEMBLY COST					.0009	.0313	.0560		.0882	.1267	.1439	2.0
ASM - SHOULDER BELT UPPER ANCHOR	83741	2	ASSY	.1717	.0985	.0775	.1217		.2977	.4277	.4858	36.0
ASM - ANCHOR PLATE	83744	1	ASSY	.1717	.0976	.0462	.0657		.2095	.3010	.3419	16.0
ASSEMBLY COST					.0009	.0313	.0560		.0882	.1267	.1439	2.0

VEHICLE- 10- AMC AMERICAN/GREMLIN/ALLIANCE

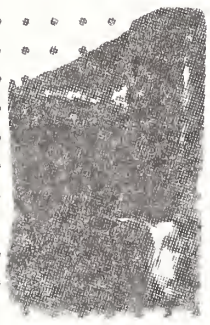
DESCRIPTION	ITEM NO.	QTY	MATL	WEIGHT	VARIABLE MATERIAL	LABOR	BURDEN	TOTAL	WHOLESALE PRICE	CONSUMER PRICE	TOOLING
ASM - ANCHOR FLATE	183744	1	2	ASSY	.1717	.0976	.0462	.2095	.3010	.3419	16.0
ANCHOR - UFFER 'B' PILLAR	183742	1	1	HRS	.1426	.0570	.0148	.1072	.1540	.1749	15.0
NUT	183743	1	1	STL	.0291	.0400		.0400	.0575	.0653	
ASSEMBLY COST						.0006	.0314	.0623	.0895	.1017	1.0

COMPONENT NO	NAME	PRE		POST		TREND		POST/PRE		TREND/PRE		TREND/POST	
		PCS	WEIGHT	PCS	WEIGHT	PCS	WEIGHT	PCS	WEIGHT	PCS	WEIGHT	PCS	WEIGHT
01 ASM	FRONT S/BELT OUTBOARD ANCHOR	2	.74	2	2.12	2	.29	2	1.38	2	.45	2	1.83
			.41		5.95		.12		5.54		.29		5.83
04 ASM	ANCHOR PLATE	2	.57	2	1.95				1.38		.57		1.95
			.41		5.95				5.54		.41		5.95
02 PLATE		2	.17	2	1.76	2	.11	2	1.59	2	.06	2	1.65
			.34		5.91		.12		5.57		.22		5.79
03 NUT		2	.08	2	.06				.02		.08		.06
			.07		.05				.02		.07		.05
11 ASM	FRONT S/BELT INBOARD ANCHOR	2	.74	2	.85	2	.29	2	.11	2	.45	2	.56
			.41		1.37		.12		.96		.29		1.25
14 ASM	ANCHOR PLATE	2	.57	2	1.37				.10		.57		.67
			.41		1.37				.96		.41		1.37
12 PLATE		2	.17	2	.50	2	.11	2	.33	2	.06	2	.39
			.34		1.32		.12		.98		.22		1.20
13 NUT		2	.08	2	.05				.03		.08		.05
			.07		.05				.02		.07		.05
21 ASM	REAR S/BELT OUTBOARD ANCHOR	2	.74	2	1.27	2	.29	2	.53	2	.45	2	.98
			.41		2.54		.12		2.13		.29		2.42
24 ASM	ANCHOR PLATE	2	.57	2	1.10				.53		.57		1.10
			.41		2.54				2.13		.41		2.54
22 PLATE		2	.17	2	.91	2	.11	2	.74	2	.06	2	.80
			.34		2.49		.12		2.15		.22		2.37
23 NUT		2	.08	2	.06				.02		.08		.06
			.07		.05				.02		.07		.05
31 ASM	REAR S/BELT INBOARD ANCHOR	2	.74	2	.86	2	.29	2	.12	2	.45	2	.57
			.41		1.37		.12		.96		.29		1.25
34 ASM	ANCHOR PLATE	2	.57	2	.68				.11		.57		.68
			.41		1.37				.96		.41		1.37
32 PLATE		2	.17	2	.51	2	.11	2	.34	2	.06	2	.40
			.34		1.32		.12		.98		.22		1.20
33 NUT		2	.08	2	.05				.03		.08		.05
			.07		.05				.02		.07		.05
41 ASM	SHOULDER BELT UPPER ANCHOR	2	.48	2	.60	2	.60	2	.48	2	.60	2	.12
			.26		.34		.34		.26		.34		.08
44 ASM	ANCHOR PLATE	2	.30	2	.42	2	.42	2	.30	2	.42	2	.12
			.26		.34		.34		.26		.34		.08
42 PLATE		2	.13	2	.21	2	.21	2	.13	2	.21	2	.08
			.21		.29		.29		.21		.29		.08
43 NUT		2	.05	2	.08	2	.08	2	.05	2	.08	2	.03
			.05		.06		.06		.05		.06		.01

PASSENGER VEHICLE

RAMBLER GREMLIN ALLIANCE

PRE POST TREND



1



11



21



31



41

VEHICLE- 11- TOYOTA CORONA/TERCEL

DESCRIPTION	ITEM NO.	QTY	MATL	WEIGHT	VARIABLE MANUFACTURING COST	TOTAL	WHOLESALE PRICE	CONSUMER PRICE	TOOLING		
					MATERIAL	LABOR	BURDEN				
TOYOTA CORONA/TERCEL		1		5.2744	2.3924	1.5402	2.7080	6.6486	9.5532	10.8526	220.5
ASM - FRONT S/BELT OUTBOARD ANCHOR	174701	2	ASSY	.3058	.1324	.1446	.2292	.5062	.7274	.8264	13.0
ASM - FRONT S/BELT INBOARD ANCHOR	174711	2	ASSY	.0842	.0254	.0962	.1784	.3000	.4310	.4896	11.0
ASM - REAR S/BELT OUTBOARD ANCHOR	174721	2	ASSY	.2204	.1096	.1436	.2292	.4824	.6932	.7876	13.0
ASM - REAR S/BELT INBOARD ANCHOR	174731	2	ASSY	.2940	.1294	.1436	.2292	.5022	.7216	.8198	13.0
ASM - SHOULDER BELT UPPER ANCHOR	174741	2	ASSY	1.1010	.4732	.1600	.2868	.9200	1.3218	1.5018	41.0
ASM - FRONT S/BELT OUTBOARD ANCHOR	183701	2	ASSY	.0460	.0598	.0626	.1120	.2344	.3368	.3826	1.0
ASM - FRONT S/BELT INBOARD ANCHOR	183711	2	ASSY	.3058	.1344	.1504	.2598	.5446	.7826	.8890	18.0
ASM - REAR S/BELT OUTBOARD ANCHOR	183721	2	ASSY	1.3136	.7250	.2434	.4964	1.4648	2.1048	2.3908	36.5
ASM - REAR S/BELT INBOARD ANCHOR	183731	2	ASSY	.3866	.1786	.1514	.2598	.5898	.8474	.9626	18.0
ASM - SHOULDER BELT UPPER ANCHOR	183741	2	ASSY	.0460	.0598	.0626	.1120	.2344	.3368	.3826	20.0
ASM - SHOULDER BELT LOWER ANCHOR	183751	2	ASSY	1.1710	.3648	.1898	.3152	.8698	1.2498	1.4198	36.0
ASSEMBLY COST											

ASM - FRONT S/BELT OUTBOARD ANCHOR	174701	2	ASSY	.1529	.0662	.0723	.1146	.2531	.3637	.4132	13.0
ASM - ANCHOR PLATE	174704	1	ASSY	.1529	.0653	.0410	.0586	.1649	.2370	.2693	11.0
ASSEMBLY COST					.0009	.0313	.0560	.0892	.1267	.1439	2.0
ASM - ANCHOR PLATE	174704	2	ASSY	.1529	.0653	.0410	.0586	.1649	.2370	.2693	11.0
ANCHOR - OUTBOARD FRONT	174702	1	HRS	.1299	.0357	.0096	.0283	.0736	.1058	.1202	10.0
NUT	174703	1	STL	.0230	.0290			.0290	.0417	.0474	
ASSEMBLY COST					.0006	.0314	.0303	.0623	.0895	.1017	1.0
ASM - FRONT S/BELT INBOARD ANCHOR	174711	2	ASSY	.0421	.0127	.0481	.0892	.1500	.2155	.2448	11.0
ANCHOR - INBOARD FRONT	174712	1	HRS	.0421	.0121	.0167	.0589	.0877	.1260	.1431	10.0
ASSEMBLY COST					.0006	.0314	.0303	.0623	.0895	.1017	1.0

VEHICLE 11- TOYOTA CORONA/TERCEL

ITEM NO.	DESCRIPTION	QTY	MATERIAL	WEIGHT	MATERIAL	VARIABLE MANUFACTURING COST	LABOR	BURDEN	TOTAL	WHOLESALE PRICE	CONSUMER PRICE
174721	ASM - REAR S/BELT OUTBOARD ANCHOR	2	ASSY	.1102	.0548	.0718	.1146	.2412	.3466	.3738	13.0
174724	ASM - ANCHOR PLATE	1	ASSY	.1102	.0539	.0405	.0586	.1530	.2199	.2499	11.0
	ASSEMBLY COST				.0009	.0313	.0560	.0892	.1267	.1439	2.0
174724	ASM - ANCHOR PLATE	2	ASSY	.1102	.0539	.0405	.0586	.1530	.2199	.2499	11.0
174722	ANCHOR - OUTBOARD REAR	1	HRS	.0872	.0243	.0091	.0283	.0617	.0887	.1008	10.0
174723	NUT	1	STL	.0230	.0290			.0290	.0417	.0474	
	ASSEMBLY COST				.0006	.0314	.0303	.0623	.0895	.1017	1.0
174731	ASM - REAR S/BELT INBOARD ANCHOR	2	ASSY	.1470	.0647	.0718	.1146	.2511	.3608	.4099	13.0
174734	ASM - ANCHOR PLATE	1	ASSY	.1470	.0638	.0405	.0586	.1629	.2341	.2660	11.0
	ASSEMBLY COST				.0009	.0313	.0560	.0892	.1267	.1439	2.0
174734	ASM - ANCHOR PLATE	2	ASSY	.1470	.0638	.0405	.0586	.1629	.2341	.2660	11.0
174732	ANCHOR - INBOARD REAR	1	HRS	.1240	.0342	.0091	.0283	.0716	.1029	.1169	10.0
174733	NUT	1	STL	.0230	.0290			.0290	.0417	.0474	
	ASSEMBLY COST				.0006	.0314	.0303	.0623	.0895	.1017	1.0
174741	ASM - SHOULDER BELT UPPER ANCHOR	2	ASSY	.5505	.2366	.0800	.1434	.4600	.6609	.7509	41.0
174744	ASM - ANCHOR PLATE	1	ASSY	.5505	.2357	.0487	.0874	.3718	.5342	.6070	21.0
	ASSEMBLY COST				.0009	.0313	.0560	.0882	.1267	.1439	20.0
174744	ASM - ANCHOR PLATE	2	ASSY	.5505	.2357	.0487	.0874	.3718	.5342	.6070	21.0
174742	ANCHOR - UPPER	1	HRS	.4909	.1751	.0173	.0571	.2495	.3585	.4073	20.0
174743	NUT	2	STL	.0594	.0600			.0600	.0862	.0980	
	ASSEMBLY COST				.0006	.0314	.0303	.0623	.0895	.1017	1.0
183701	ASM - FRONT S/BELT OUTBOARD ANCHOR	2	ASSY	.0230	.0299	.0313	.0560	.1172	.1684	.1913	1.0
183703	NUT	1	STL	.0230	.0290			.0290	.0417	.0474	
	ASSEMBLY COST				.0009	.0313	.0560	.0892	.1267	.1439	2.0

VEHICLE- 11- TOYOTA CORONA/TERCEL

ITEM NO.	DESCRIPTION	QTY	MATL	WEIGHT	VARIABLE MATERIAL	LABOR	MANUFACTURING BURDEN	TOTAL COST	WHOLESALE PRICE	CONSUMER PRICE	TOOLING
83711	ASM - FRONT S/BELT INBOARD ANCHOR	2	ASSY	.1529	.0672	.0752	.1299	.2723	.3913	.4445	18.0
83714	ASM - ANCHOR PLATE	1	ASSY	.1529	.0663	.0439	.0739	.1841	.2646	.3006	16.0
	ASSEMBLY COST				.0009	.0313	.0560	.0882	.1267	.1439	2.0
83714	ASM - ANCHOR PLATE	2	ASSY	.1529	.0663	.0439	.0739	.1841	.2646	.3006	16.0
83712	ANCHOR - INBOARD FRONT	1	HRS	.1299	.0367	.0125	.0436	.0928	.1334	.1515	15.0
83713	NUT	1	STL	.0230	.0290			.0290	.0417	.0474	
	ASSEMBLY COST				.0006	.0314	.0303	.0623	.0895	.1017	1.0
83721	ASM - REAR S/BELT OUTBOARD ANCHOR	2	ASSY	.6568	.3625	.1217	.2482	.7324	1.0524	1.1954	36.5
83724	ASM - ANCHOR PLATE	1	ASSY	.6568	.3616	.0904	.1922	.6442	.9257	1.0515	26.5
	ASSEMBLY COST				.0009	.0313	.0560	.0882	.1267	.1439	10.0
83724	ASM - ANCHOR PLATE	2	ASSY	.6568	.3616	.0904	.1922	.6442	.9257	1.0515	26.5
83722	ANCHOR - OUTBOARD REAR	1	HRS	.5972	.2847	.0433	.1476	.4756	.6834	.7763	25.0
83723	NUT	2	STL	.0596	.0760			.0760	.1092	.1240	
	ASSEMBLY COST				.0009	.0471	.0446	.0926	.1331	.1512	1.5
83731	ASM - REAR S/BELT INBOARD ANCHOR	2	ASSY	.1933	.0893	.0757	.1299	.2949	.4237	.4813	18.0
83734	ASM - ANCHOR PLATE	1	ASSY	.1933	.0884	.0444	.0739	.2067	.2970	.3374	16.0
	ASSEMBLY COST				.0009	.0313	.0560	.0882	.1267	.1439	2.0
83734	ASM - ANCHOR PLATE	2	ASSY	.1933	.0884	.0444	.0739	.2067	.2970	.3374	16.0
83732	ANCHOR - INBOARD REAR	1	HRS	.1588	.0448	.0130	.0436	.1014	.1457	.1655	15.0
83733	NUT	1	STL	.0345	.0430			.0430	.0618	.0702	
	ASSEMBLY COST				.0006	.0314	.0303	.0623	.0895	.1017	1.0
83741	ASM - SHOULDER BELT UPPER ANCHOR	2	ASSY	.0230	.0299	.0313	.0560	.1172	.1684	.1913	20.0
83743	NUT	1	STL	.0230	.0290			.0290	.0417	.0474	
	ASSEMBLY COST				.0009	.0313	.0560	.0882	.1267	.1439	20.0

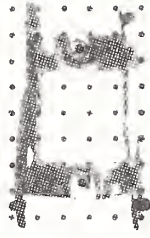
DESCRIPTION	ITEM NO.	QTY	MATL	WEIGHT	MATERIAL	LABOR	BURDEN	TOTAL	WHOLESALE PRICE	CONSUMER PRICE	TOTAL
ASM - SHOULDER BELT LOWER ANCHOR	183751	2	ASSY	.5855	.1824	.0949	.1576	.4349	.6249	.7099	36.0
ASM - ANCHOR PLATE	183754	1	ASSY	.5855	.1815	.0636	.1016	.3467	.4982	.5660	16.0
ASSEMBLY COST						.0313	.0560	.0882	.1267	.1439	20.0
ASM - ANCHOR FLATE	183754	2	ASSY	.5855	.1815	.0636	.1016	.3467	.4982	.5660	16.0
ANCHOR - LOWER	183752	1	HRS	.5625	.1519	.0322	.0713	.2554	.3670	.4169	15.0
NUT	183753	1	STL	.0230	.0290			.0290	.0417	.0474	
ASSEMBLY COST					.0006	.0314	.0303	.0623	.0895	.1017	1.0

COMPONENT NO	NAME	PRE		POST		TREND		POST/PRE		TREND/PRE		TREND/POST	
		PCS \$	RQD WEIGHT \$	COST \$	PCS \$	RQD WEIGHT \$	\$	WGT \$	\$	WGT \$	\$	WGT \$	\$
01 ASM	FRONT S/BELT OUTBOARD ANCHOR	2	\$.51	2	\$.23	2	\$.51	2	\$.23	2	\$.23	2	\$.28
04 ASM	ANCHOR PLATE	2	\$.31	2	\$.05	2	\$.31	2	\$.05	2	\$.05	2	\$.26
02 PLATE		2	\$.31	2	\$.31	2	\$.31	2	\$.31	2	\$.31	2	\$.31
03 NUT		2	\$.15	2	\$.15	2	\$.15	2	\$.15	2	\$.15	2	\$.15
		2	\$.26	2	\$.26	2	\$.26	2	\$.26	2	\$.26	2	\$.26
		2	\$.06	2	\$.06	2	\$.06	2	\$.06	2	\$.06	2	\$.06
		2	\$.05	2	\$.05	2	\$.05	2	\$.05	2	\$.05	2	\$.05
11 ASM	FRONT S/BELT INBOARD ANCHOR	2	\$.30	2	\$.54	2	\$.30	2	\$.54	2	\$.54	2	\$.24
14 ASM	ANCHOR PLATE	2	\$.08	2	\$.37	2	\$.08	2	\$.37	2	\$.37	2	\$.37
12 PLATE		2	\$.18	2	\$.19	2	\$.18	2	\$.19	2	\$.19	2	\$.01
13 NUT		2	\$.08	2	\$.26	2	\$.08	2	\$.26	2	\$.26	2	\$.18
		2	\$.06	2	\$.06	2	\$.06	2	\$.06	2	\$.06	2	\$.06
		2	\$.05	2	\$.05	2	\$.05	2	\$.05	2	\$.05	2	\$.05
21 ASM	REAR S/BELT OUTBOARD ANCHOR	2	\$.48	2	\$ 1.46	2	\$.48	2	\$ 1.46	2	\$ 1.46	2	\$.98
24 ASM	ANCHOR PLATE	2	\$.22	2	\$ 1.31	2	\$.22	2	\$ 1.31	2	\$ 1.31	2	\$ 1.09
22 PLATE		2	\$.22	2	\$ 1.31	2	\$.22	2	\$ 1.31	2	\$ 1.31	2	\$ 1.09
23 NUT		2	\$.12	2	\$.95	2	\$.12	2	\$.95	2	\$.95	2	\$.83
		2	\$.17	2	\$ 1.19	2	\$.17	2	\$ 1.19	2	\$ 1.19	2	\$ 1.02
		2	\$.06	2	\$.30	2	\$.06	2	\$.30	2	\$.30	2	\$.24
		2	\$.05	2	\$.24	2	\$.05	2	\$.24	2	\$.24	2	\$.19
31 ASM	REAR S/BELT INBOARD ANCHOR	2	\$.50	2	\$.59	2	\$.50	2	\$.59	2	\$.59	2	\$.09
34 ASM	ANCHOR PLATE	2	\$.29	2	\$.39	2	\$.29	2	\$.39	2	\$.39	2	\$ 1.0
32 PLATE		2	\$.41	2	\$.41	2	\$.41	2	\$.41	2	\$.41	2	\$.08
33 NUT		2	\$.29	2	\$.39	2	\$.29	2	\$.39	2	\$.39	2	\$.10
		2	\$.14	2	\$.20	2	\$.14	2	\$.20	2	\$.20	2	\$.06
		2	\$.25	2	\$.32	2	\$.25	2	\$.32	2	\$.32	2	\$.07
		2	\$.06	2	\$.09	2	\$.06	2	\$.09	2	\$.09	2	\$.03
		2	\$.05	2	\$.07	2	\$.05	2	\$.07	2	\$.07	2	\$.02
41 ASM	SHOULDER BELT UPPER ANCHOR	2	\$.92	2	\$.23	2	\$.92	2	\$.23	2	\$.23	2	\$.69
44 ASM	ANCHOR PLATE	2	\$ 1.10	2	\$.05	2	\$ 1.10	2	\$.05	2	\$.05	2	\$ 1.05
42 PLATE		2	\$.74	2	\$.74	2	\$.74	2	\$.74	2	\$.74	2	\$.74
43 NUT		2	\$ 1.10	2	\$ 1.10	2	\$ 1.10	2	\$ 1.10	2	\$ 1.10	2	\$ 1.10
		2	\$.50	2	\$.50	2	\$.50	2	\$.50	2	\$.50	2	\$.50
		4	\$.98	4	\$.98	4	\$.98	4	\$.98	4	\$.98	4	\$.98
		2	\$.24	2	\$.24	2	\$.24	2	\$.24	2	\$.24	2	\$.18
		2	\$.24	2	\$.24	2	\$.24	2	\$.24	2	\$.24	2	\$.19
51 ASM	SHOULDER BELT LOWER ANCHOR	2	\$.87	2	\$ 1.17	2	\$.87	2	\$ 1.17	2	\$ 1.17	2	\$.87
54 ASM	ANCHOR PLATE	2	\$.69	2	\$ 1.17	2	\$.69	2	\$ 1.17	2	\$ 1.17	2	\$.69
52 PLATE		2	\$.51	2	\$.51	2	\$.51	2	\$.51	2	\$.51	2	\$.51
53 NUT		2	\$ 1.13	2	\$ 1.13	2	\$ 1.13	2	\$ 1.13	2	\$ 1.13	2	\$ 1.13
		2	\$.06	2	\$.06	2	\$.06	2	\$.06	2	\$.06	2	\$.06
		2	\$.05	2	\$.05	2	\$.05	2	\$.05	2	\$.05	2	\$.05

PASSENGER VEHICLE

CORONA CORONA TERCEL

PRE POST TREND



1

11

21

31

41

51

VEHICLE- 12- NISSAN SENTRA

DESCRIPTION	ITEM NO.	QTY	MATL	WEIGHT	MATERIAL	VARIABLE LABOR	MANUFACTURING BURDEN	COST TOTAL	WHOLESALE PRICE	CONSUMER PRICE	TOOLING 000S
NISSAN SENTRA		1		1.5794	.7238	.7800	1.4652	2.9690	4.2660	4.8464	102.0
ASM - FRONT S/BELT OUTBOARD ANCHOR	183701	2	ASSY	.2336	.1178	.1420	.2256	.4854	.6974	.7922	13.0
ASM - FRONT S/BELT INBOARD ANCHOR	183711	2	ASSY	.1274	.0372	.0962	.1784	.3118	.4480	.5090	11.0
ASM - REAR S/BELT OUTBOARD ANCHOR	183721	2	ASSY	.3202	.1484	.1504	.2598	.5586	.8026	.9118	13.0
ASM - REAR S/BELT INBOARD ANCHOR	183731	2	ASSY	.3460	.1462	.2026	.4430	.7918	1.1378	1.2926	24.0
ASM - SHOULDER BELT UPPER ANCHOR	183741	2	ASSY	.5522	.2742	.1888	.3584	.8214	1.1802	1.3408	41.0

ASSEMBLY COST

ASM - FRONT S/BELT OUTBOARD ANCHOR	183701	2	ASSY	.1168	.0589	.0710	.1128	.2427	.3487	.3961	13.0
ASM - ANCHOR FLATE	183704	1	ASSY	.1168	.0580	.0397	.0568	.1545	.2220	.2522	11.0
ASSEMBLY COST					.0009	.0313	.0560	.0882	.1267	.1439	2.0

ASM - ANCHOR FLATE	183704	2	ASSY	.1168	.0580	.0397	.0568	.1545	.2220	.2522	11.0
ANCHOR - OUTBOARD FRONT	183702	1	HRS	.0938	.0284	.0083	.0265	.0632	.0908	.1031	10.0
NUT	183703	1	STL	.0230	.0290			.0290	.0417	.0474	
ASSEMBLY COST					.0006	.0314	.0303	.0623	.0895	.1017	1.0

ASM - FRONT S/BELT INBOARD ANCHOR	183711	2	ASSY	.0637	.0186	.0481	.0892	.1559	.2240	.2545	11.0
ANCHOR - INBOARD FRONT	183712	1	HRS	.0637	.0180	.0167	.0589	.0936	.1345	.1528	10.0
ASSEMBLY COST					.0006	.0314	.0303	.0623	.0895	.1017	1.0

ASM - REAR S/BELT OUTBOARD ANCHOR	183721	2	ASSY	.1601	.0742	.0752	.1299	.2793	.4013	.4559	13.0
ASM - ANCHOR FLATE	183724	1	ASSY	.1601	.0733	.0439	.0739	.1911	.2746	.3120	11.0
ASSEMBLY COST					.0009	.0313	.0560	.0882	.1267	.1439	2.0

ASM - ANCHOR FLATE	183724	2	ASSY	.1601	.0733	.0439	.0739	.1911	.2746	.3120	11.0
ANCHOR - OUTBOARD REAR	183722	1	HRS	.1371	.0437	.0125	.0436	.0998	.1434	.1629	10.0

DESCRIPTION	ITEM NO.	QTY	MATERIAL	WEIGHT	VARIABLE MANUFACTURING COST			WHOLESALE CONSUMER TOOLING		
					MATERIAL	LABOR	BURDEN	TOTAL	PRICE	PRICE
NUT	83723	1	STL	.0230	.0290			.0290	.0417	.0474
ASSEMBLY COST					.0006	.0314	.0303	.0623	.0895	.1017
ASM - REAR S/BELT INBOARD ANCHOR	83731	2	ASSY	.1730	.0731	.1013	.2215	.3959	.5689	.6463
ASM - ANCHOR FLATE	83734	1	ASSY	.1730	.0722	.0700	.1655	.3077	.4422	.5024
ASSEMBLY COST					.0009	.0313	.0560	.0882	.1267	.1439
ASM - ANCHOR FLATE	83734	2	ASSY	.1730	.0722	.0700	.1655	.3077	.4422	.5024
ANCHOR - INBOARD REAR	83732	1	HRS	.1500	.0426	.0386	.1352	.2164	.3110	.3533
NUT	83733	1	STL	.0230	.0290			.0290	.0417	.0474
ASSEMBLY COST					.0006	.0314	.0303	.0623	.0895	.1017
ASM - SHOULDER BELT UPPER ANCHOR	83741	2	ASSY	.2761	.1371	.0944	.1792	.4107	.5901	.6704
ASM - ANCHOR FLATE	83744	1	ASSY	.2761	.1362	.0631	.1232	.3225	.4634	.5265
ASSEMBLY COST					.0009	.0313	.0560	.0882	.1267	.1439
ASM - ANCHOR FLATE	83744	2	ASSY	.2761	.1362	.0631	.1232	.3225	.4634	.5265
ANCHOR - UPPER	83742	1	HRS	.2463	.1056	.0317	.0929	.2302	.3308	.3758
NUT	83743	1	STL	.0298	.0300			.0300	.0431	.0490
ASSEMBLY COST					.0006	.0314	.0303	.0623	.0895	.1017

A-3

DATE 2/05/85
PRE-

COST-WEIGHT COMPARISON CHART--FMUSS 210
POST-

TREND-1983 NISSAN SENTRA

PAGE 6

COMPONENT NO	NAME	PRE		POST		TREND		POST/PRE		TREND/PRE		TREND/POST	
		PCS RQD.	\$ WEIGHT	PCS RQD.	\$ WEIGHT	\$ WEIGHT	\$ RQD.	\$ WEIGHT	\$ WEIGHT	\$ RQD.	\$ WEIGHT	\$ WEIGHT	\$ RQD.
01	ASM - FRONT S/BELT OUTBOARD ANCHOR	2	\$.49	2	\$.49	\$.49	\$.49	\$.49	\$.49	\$.49	\$.49	\$.49	\$.49
04	ASM - ANCHOR PLATE	2	\$.31	2	\$.31	\$.31	\$.31	\$.31	\$.31	\$.31	\$.31	\$.31	\$.31
02	PLATE	2	\$.13	2	\$.13	\$.13	\$.13	\$.13	\$.13	\$.13	\$.13	\$.13	\$.13
03	NUT	2	\$.06	2	\$.06	\$.06	\$.06	\$.06	\$.06	\$.06	\$.06	\$.06	\$.06
11	ASM - FRONT S/BELT INBOARD ANCHOR	2	\$.31	2	\$.31	\$.31	\$.31	\$.31	\$.31	\$.31	\$.31	\$.31	\$.31
12	PLATE	2	\$.13	2	\$.13	\$.13	\$.13	\$.13	\$.13	\$.13	\$.13	\$.13	\$.13
21	ASM - REAR S/BELT OUTBOARD ANCHOR	2	\$.56	2	\$.56	\$.56	\$.56	\$.56	\$.56	\$.56	\$.56	\$.56	\$.56
24	ASM - ANCHOR PLATE	2	\$.38	2	\$.38	\$.38	\$.38	\$.38	\$.38	\$.38	\$.38	\$.38	\$.38
22	PLATE	2	\$.20	2	\$.20	\$.20	\$.20	\$.20	\$.20	\$.20	\$.20	\$.20	\$.20
23	NUT	2	\$.27	2	\$.27	\$.27	\$.27	\$.27	\$.27	\$.27	\$.27	\$.27	\$.27
31	ASM - REAR S/BELT INBOARD ANCHOR	2	\$.79	2	\$.79	\$.79	\$.79	\$.79	\$.79	\$.79	\$.79	\$.79	\$.79
34	ASM - ANCHOR PLATE	2	\$.62	2	\$.62	\$.62	\$.62	\$.62	\$.62	\$.62	\$.62	\$.62	\$.62
32	PLATE	2	\$.35	2	\$.35	\$.35	\$.35	\$.35	\$.35	\$.35	\$.35	\$.35	\$.35
33	NUT	2	\$.30	2	\$.30	\$.30	\$.30	\$.30	\$.30	\$.30	\$.30	\$.30	\$.30
41	ASM - SHOULDER BELT UPPER ANCHOR	2	\$.82	2	\$.82	\$.82	\$.82	\$.82	\$.82	\$.82	\$.82	\$.82	\$.82
44	ASM - ANCHOR PLATE	2	\$.65	2	\$.65	\$.65	\$.65	\$.65	\$.65	\$.65	\$.65	\$.65	\$.65
42	PLATE	2	\$.46	2	\$.46	\$.46	\$.46	\$.46	\$.46	\$.46	\$.46	\$.46	\$.46
43	NUT	2	\$.49	2	\$.49	\$.49	\$.49	\$.49	\$.49	\$.49	\$.49	\$.49	\$.49
		2	\$.06	2	\$.06	\$.06	\$.06	\$.06	\$.06	\$.06	\$.06	\$.06	\$.06

A-30

PASSENGER VEHICLE

SENTRA

TREND

POST

PRE

1

1

11

11

21

21

31

31

41

51

VEHICLE- 13- CHEVROLET C-10 PICK-UP

DESCRIPTION	ITEM NO.	QTY	MATL	WEIGHT	MATERIAL	LABOR	BURDEN	TOTAL	PRICE	PRICE	CONSUMER	TOOLING
CHEVROLET C-10 PICK-UP		1		2.5304	.9694	.8530	1.3042	3.1266	4.4926	5.1042	96.0	
ASM - FRONT S/BELT ANCHOR OUTBOARD	67701	2	ASSY	.0460	.0598	.0626	.1120	.2344	.3368	.3826	2.0	
ASM - FRONT S/BELT ANCHOR INBOARD	67711	2	ASSY	.4500	.0658	.0626	.1120	.2404	.3454	.3924	2.0	
ASM - FRONT S/BELT ANCHOR OUTBOARD	74701	2	ASSY	.0460	.0598	.0626	.1120	.2344	.3368	.3826	2.0	
ASM - FRONT S/BELT ANCHOR INBOARD	74711	2	ASSY	.4660	.1764	.1468	.2310	.5542	.7964	.9048	13.0	
ASM - SHOULDER BELT UPPER ANCHOR	74741	2	ASSY	.5052	.1860	.1544	.2228	.5632	.8092	.9194	31.0	
ASM - FRONT S/BELT ANCHOR OUTBOARD	83701	2	ASSY	.0460	.0598	.0626	.1120	.2344	.3368	.3826	2.0	
ASM - FRONT S/BELT ANCHOR INBOARD	83711	2	ASSY	.4660	.1764	.1468	.2310	.5542	.7964	.9048	13.0	
ASM - SHOULDER BELT UPPER ANCHOR	83741	2	ASSY	.5052	.1854	.1546	.1714	.5114	.7348	.8350	31.0	
ASSEMBLY COST												

A-40

ASM - FRONT S/BELT ANCHOR OUTBOARD	67701	2	ASSY	.0230	.0299	.0313	.0560	.1172	.1684	.1913	2.0	
NUT	67703	1	STL	.0230	.0290			.0290	.0417	.0474		
ASSEMBLY COST					.0009	.0313	.0560	.0882	.1267	.1439	2.0	
ASM - FRONT S/BELT ANCHOR INBOARD	67711	2	ASSY	.2250	.0329	.0313	.0560	.1202	.1727	.1962	2.0	
NUT	67713	1	STL	.2250	.0320			.0320	.0460	.0523		
ASSEMBLY COST					.0009	.0313	.0560	.0882	.1267	.1439	2.0	
ASM - FRONT S/BELT ANCHOR OUTBOARD	74701	2	ASSY	.0230	.0299	.0313	.0560	.1172	.1684	.1913	2.0	
NUT	74703	1	STL	.0230	.0290			.0290	.0417	.0474		
ASSEMBLY COST					.0009	.0313	.0560	.0882	.1267	.1439	2.0	
ASM - FRONT S/BELT ANCHOR INBOARD	74711	2	ASSY	.2330	.0882	.0734	.1155	.2771	.3982	.4524	13.0	
ASM - ANCHOR FLATE	74714	1	ASSY	.2330	.0873	.0421	.0595	.1889	.2715	.3085	11.0	
ASSEMBLY COST					.0009	.0313	.0560	.0882	.1267	.1439	2.0	

VEHICLE- 13- CHEVROLET C-10 PICK-UP

DESCRIPTION	ITEM NO.	QTY	MATERIAL	WEIGHT	VARIABLE MANUFACTURING COST			TOTAL	WHOLESALE CONSUMER TOOLING		
					LABOR	BURDEN	MATERIAL		PRICE	PRICE	000S
ASM - ANCHOR PLATE	174714	2	1 ASSY	.2330	.0873	.0424	.0595	.1889	.2715	.3085	11.0
ANCHOR PLATE	174712	1	1 HRS	.2100	.0577	.0107	.0292	.0976	.1403	.1594	10.0
NUT	174713	1	1 STL	.0230	.0290			.0290	.0417	.0474	
ASSEMBLY COST					.0006	.0314	.0303	.0623	.0895	.1017	1.0
ASM - SHOULDER BELT UPPER ANCHOR	174741	2	1 ASSY	.2526	.0930	.0772	.1114	.2816	.4046	.4597	31.0
ASM - ANCHOR PLATE	174744	1	1 ASSY	.2526	.0924	.0459	.0554	.1934	.2779	.3158	11.0
ASSEMBLY COST					.0009	.0313	.0560	.0882	.1267	.1439	20.0
ASM - ANCHOR PLATE	174744	2	1 ASSY	.2526	.0924	.0459	.0554	.1934	.2779	.3158	11.0
ANCHOR - UPPER SHOULDER BELT	174742	1	1 HRS	.2296	.0625	.0145	.0251	.1021	.1467	.1667	10.0
NUT	174743	1	1 HRS	.0230	.0290			.0290	.0417	.0474	
ASSEMBLY COST					.0006	.0314	.0303	.0623	.0895	.1017	1.0
ASM - FRONT S/BELT ANCHOR OUTBOARD	183701	2	1 ASSY	.0230	.0299	.0313	.0560	.1172	.1684	.1913	2.0
NUT	183703	1	1 STL	.0230	.0290			.0290	.0417	.0474	
ASSEMBLY COST					.0009	.0313	.0560	.0882	.1267	.1439	2.0
ASM - FRONT S/BELT ANCHOR INBOARD	183711	2	1 ASSY	.2330	.0882	.0734	.1155	.2771	.3982	.4524	13.0
ASM - ANCHOR PLATE	183714	1	1 ASSY	.2330	.0873	.0424	.0595	.1889	.2715	.3085	11.0
ASSEMBLY COST					.0009	.0313	.0560	.0882	.1267	.1439	2.0
ASM - ANCHOR PLATE	183714	2	1 ASSY	.2330	.0873	.0424	.0595	.1889	.2715	.3085	11.0
ANCHOR PLATE	183712	1	1 HRS	.2100	.0577	.0107	.0292	.0976	.1403	.1594	10.0
NUT	183713	1	1 STL	.0230	.0290			.0290	.0417	.0474	
ASSEMBLY COST					.0006	.0314	.0303	.0623	.0895	.1017	1.0
ASM - SHOULDER BELT UPPER ANCHOR	183741	2	1 ASSY	.2526	.0927	.0773	.1114	.2557	.3674	.4175	31.0
ASM - ANCHOR PLATE	183744	1	1 ASSY	.2526	.0924	.0459	.0554	.1934	.2779	.3158	11.0
ASSEMBLY COST					.0006	.0314	.0303	.0623	.0895	.1017	20.0

VEHICLE- 13- CHEVROLET C-10 PICK-UP

DESCRIPTION	ITEM NO.	QTY	MATL	WEIGHT	MATERIAL	VARIABLE MANUFACTURING COST	TOTAL	WHOLESALE PRICE	CONSUMER PRICE	TOOLING
ASM - ANCHOR PLATE	183744	2	ASSY	.2526	.0921	.0459	.1934	.2779	.3158	11.0
ANCHOR - UPPER SHOULDER BELT	183742	1	HRS	.2296	.0625	.0145	.1021	.1467	.1667	10.0
NUT	183743	1	STL	.0230	.0290		.0290	.0417	.0474	
ASSEMBLY COST					.0006	.0314	.0623	.0895	.1017	1.0

COMPONENT NO	NAME	PRE		POST		TREND		POST/PRE		TREND/PRE		TREND/POST	
		FCS RQD	\$ WEIGHT	FCS RQD	\$ WEIGHT	\$ COST	\$ WEIGHT	\$ COST	\$ WGT	\$ COST	\$ WGT	\$ COST	\$ WGT
01	ASM - FRONT S/BELT OUTBOARD ANCHOR	2	\$.23	2	\$.23	2	\$.23	2	\$.00	2	\$.00	2	\$.00
03	NUT	2	\$.05	2	\$.06	2	\$.05	2	\$.00	2	\$.00	2	\$.00
11	ASM - FRONT S/BELT INBOARD ANCHOR	2	\$.24	2	\$.45	2	\$.55	2	\$.31	2	\$.31	2	\$.00
14	ASM - ANCHOR PLATE	2	\$.38	2	\$.47	2	\$.38	2	\$.38	2	\$.38	2	\$.00
12	PLATE	2	\$.20	2	\$.47	2	\$.20	2	\$.47	2	\$.47	2	\$.00
13	NUT	2	\$.06	2	\$.42	2	\$.06	2	\$.42	2	\$.42	2	\$.00
41	ASM - SHOULDER BELT UPPER ANCHOR	2	\$.51	2	\$.56	2	\$.51	2	\$.56	2	\$.51	2	\$.05
44	ASM - ANCHOR PLATE	2	\$.39	2	\$.51	2	\$.39	2	\$.51	2	\$.39	2	\$.00
42	PLATE	2	\$.20	2	\$.51	2	\$.20	2	\$.51	2	\$.20	2	\$.00
43	NUT	2	\$.46	2	\$.46	2	\$.46	2	\$.46	2	\$.46	2	\$.00
		2	\$.06	2	\$.06	2	\$.06	2	\$.06	2	\$.06	2	\$.00
		2	\$.05	2	\$.05	2	\$.05	2	\$.05	2	\$.05	2	\$.00

PICK UP TRUCKS

C-10

C-10

C-10

TREND

POST

PRE

5

5

5

5

5

11

21

31

41

51

VEHICLE- 14- CHEVROLET S-10 PICK-UP

DESCRIPTION	ITEM NO.	QTY	MATL	WEIGHT	MATERIAL	LABOR	BURDEN	TOTAL	PRICE	PRICE	TOOLING
CHEVROLET S-10 PICK-UP		1		1.71061	.7524	.5804	.8842	2.2170	3.1852	3.6184	98.0
ASM - FRONT S/BELT OUTBOARD ANCHOR	83701	2	ASSY	.0666	.0612	.0628	.0606	.1846	.2652	.3014	2.0
ASM - FRONT S/BELT INBOARD ANCHOR	83711	2	ASSY	.0666	.0612	.0628	.0606	.1846	.2652	.3014	2.0
ASM - REAR S/BELT OUTBOARD ANCHOR	83721	2	ASSY	.6014	.2382	.1474	.2496	.6352	.9126	1.0366	40.0
ASM - REAR S/BELT INBOARD ANCHOR	83731	2	ASSY	.4418	.1752	.1474	.2496	.5722	.8222	.9338	40.0
ASM - SHOULDER BELT UPPER ANCHOR	83741	2	ASSY	.5342	.2166	.1600	.2638	.6404	.9200	1.0452	14.0

ASSEMBLY COST

ASM - FRONT S/BELT OUTBOARD ANCHOR	83701	2	ASSY	.0333	.0306	.0314	.0303	.0923	.1326	.1507	2.0
------------------------------------	-------	---	------	-------	-------	-------	-------	-------	-------	-------	-----

NUT

ASM - FRONT S/BELT OUTBOARD ANCHOR	83703	1	HRS	.0333	.0300			.0300	.0431	.0490	
------------------------------------	-------	---	-----	-------	-------	--	--	-------	-------	-------	--

ASSEMBLY COST

ASM - FRONT S/BELT OUTBOARD ANCHOR	83703	1	HRS	.0006	.0314	.0303	.0623	.0895	.1017	2.0
------------------------------------	-------	---	-----	-------	-------	-------	-------	-------	-------	-----

A-45

ASM - FRONT S/BELT INBOARD ANCHOR	83711	2	ASSY	.0333	.0306	.0314	.0303	.0923	.1326	.1507	2.0
-----------------------------------	-------	---	------	-------	-------	-------	-------	-------	-------	-------	-----

NUT

ASM - FRONT S/BELT INBOARD ANCHOR	83713	1	HRS	.0333	.0300			.0300	.0431	.0490	
-----------------------------------	-------	---	-----	-------	-------	--	--	-------	-------	-------	--

ASSEMBLY COST

ASM - FRONT S/BELT INBOARD ANCHOR	83713	1	HRS	.0006	.0314	.0303	.0623	.0895	.1017	2.0
-----------------------------------	-------	---	-----	-------	-------	-------	-------	-------	-------	-----

ASM - REAR S/BELT OUTBOARD ANCHOR	83721	2	ASSY	.3007	.1191	.0737	.1248	.3176	.4563	.5183	40.0
-----------------------------------	-------	---	------	-------	-------	-------	-------	-------	-------	-------	------

ASM - ANCHOR PLATE

ASM - ANCHOR PLATE	83724	1	ASSY	.3007	.1182	.0424	.0688	.2294	.3296	.3744	38.0
--------------------	-------	---	------	-------	-------	-------	-------	-------	-------	-------	------

ASSEMBLY COST

ASM - ANCHOR PLATE	83724	1	ASSY	.0009	.0313	.0560	.0882	.1267	.1439	2.0
--------------------	-------	---	------	-------	-------	-------	-------	-------	-------	-----

ASM - ANCHOR PLATE	83724	2	ASSY	.3007	.1182	.0424	.0688	.2294	.3296	.3744	38.0
--------------------	-------	---	------	-------	-------	-------	-------	-------	-------	-------	------

PLATE - OUTBOARD FRONT

PLATE - OUTBOARD FRONT	83722	1	HRS	.2674	.0877	.0173	.0456	.1506	.2164	.2458	35.0
------------------------	-------	---	-----	-------	-------	-------	-------	-------	-------	-------	------

NUT

PLATE - OUTBOARD FRONT	83723	1	HRS	.0333	.0300			.0300	.0431	.0490	
------------------------	-------	---	-----	-------	-------	--	--	-------	-------	-------	--

ASSEMBLY COST

PLATE - OUTBOARD FRONT	83723	1	HRS	.0005	.0251	.0232	.0488	.0701	.0796	3.0
------------------------	-------	---	-----	-------	-------	-------	-------	-------	-------	-----

ASM - REAR S/BELT INBOARD ANCHOR	83731	2	ASSY	.2209	.0876	.0737	.1248	.2861	.4111	.4669	40.0
----------------------------------	-------	---	------	-------	-------	-------	-------	-------	-------	-------	------

ASM - ANCHOR PLATE

ASM - ANCHOR PLATE	83734	1	ASSY	.2209	.0867	.0424	.0688	.1979	.2844	.3230	38.0
--------------------	-------	---	------	-------	-------	-------	-------	-------	-------	-------	------

ASSEMBLY COST

ASM - ANCHOR PLATE	83734	1	ASSY	.0009	.0313	.0560	.0882	.1267	.1439	2.0
--------------------	-------	---	------	-------	-------	-------	-------	-------	-------	-----

VEHICLE- 14- CHEVROLET S-10 PICK-UP

DESCRIPTION	ITEM NO.	QTY	MATL	WEIGHT	MATERIAL	LABOR	BURDEN	TOTAL	PRICE	PRICE	TOOLING
ASM - ANCHOR PLATE	183734	2	ASSY	.2209	.0867	.0424	.0488	.1979	.2844	.3230	38.0
PLATE - INBOARD REAR	183732	1	HRS	.1924	.0632	.0173	.0456	.1261	.1812	.2058	35.0
WELD STUD	183733	1	HRS	.0285	.0230			.0230	.0331	.0376	
ASSEMBLY COST					.0005	.0251	.0232	.0488	.0701	.0796	3.0
ASM - SHOULDER BELT UPPER ANCHOR	183741	2	ASSY	.2671	.1083	.0800	.1319	.3202	.4600	.5226	14.0
ASM - ANCHOR PLATE	183744	1	ASSY	.2671	.1074	.0487	.0759	.2320	.3333	.3787	12.0
ASSEMBLY COST					.0009	.0313	.0560	.0882	.1267	.1439	2.0
ASM - ANCHOR PLATE	183744	2	ASSY	.2671	.1074	.0487	.0759	.2320	.3333	.3787	12.0
ANCHOR - UPPER SHOULDER BELT	183742	1	HRS	.2338	.0768	.0173	.0456	.1397	.2007	.2280	10.0
NOT	183743	1	HRS	.0333	.0300			.0300	.0431	.0490	
ASSEMBLY COST					.0006	.0314	.0303	.0623	.0895	.1017	2.0

DATE 2/05/85
PRE-

COST-WEIGHT COMPARISON CHART ---FMUSS 210
POST-

TREND--1983 CHEVROLET S-10 PICKUP

PAGE 8

COMPONENT NO	NAME	PRE		POST		TREND		POST/PRE		TREND/PRE	
		PCS RQD	WEIGHT	PCS RQD	WEIGHT	WEIGHT	WEIGHT	\$ COST	MGT	\$ COST	MGT
01	ASM - FRONT S/BELT OUTBOARD ANCHOR	2	\$.18	2	\$.18	2	\$.18	2	\$.18	2	\$.18
	03 NUT	2	\$.07	2	\$.06	2	\$.07	2	\$.07	2	\$.07
11	ASM - FRONT S/BELT INBOARD ANCHOR	2	\$.18	2	\$.18	2	\$.18	2	\$.18	2	\$.18
	13 NUT	2	\$.07	2	\$.06	2	\$.07	2	\$.07	2	\$.07
21	ASM - REAR S/BELT OUTBOARD ANCHOR	2	\$.64	2	\$.64	2	\$.64	2	\$.64	2	\$.64
	24 ASM - ANCHOR PLATE	2	\$.60	2	\$.46	2	\$.60	2	\$.60	2	\$.60
	22 PLATE	2	\$.60	2	\$.30	2	\$.60	2	\$.60	2	\$.60
	23 NUT	2	\$.53	2	\$.53	2	\$.53	2	\$.53	2	\$.53
	31 ASM - REAR S/BELT INBOARD ANCHOR	2	\$.57	2	\$.57	2	\$.57	2	\$.57	2	\$.57
	34 ASM - ANCHOR PLATE	2	\$.44	2	\$.40	2	\$.44	2	\$.44	2	\$.44
	32 PLATE	2	\$.44	2	\$.25	2	\$.44	2	\$.44	2	\$.44
	33 NUT	2	\$.38	2	\$.38	2	\$.38	2	\$.38	2	\$.38
	41 ASM - SHOULDER BELT UPPER ANCHOR	2	\$.05	2	\$.05	2	\$.05	2	\$.05	2	\$.05
	42 PLATE	2	\$.06	2	\$.06	2	\$.06	2	\$.06	2	\$.06
	44 ASM - ANCHOR PLATE	2	\$.64	2	\$.53	2	\$.64	2	\$.64	2	\$.64
	42 PLATE	2	\$.53	2	\$.46	2	\$.53	2	\$.53	2	\$.53
	43 NUT	2	\$.53	2	\$.53	2	\$.53	2	\$.53	2	\$.53
	42 PLATE	2	\$.28	2	\$.47	2	\$.28	2	\$.28	2	\$.28
	43 NUT	2	\$.47	2	\$.47	2	\$.47	2	\$.47	2	\$.47
	43 NUT	2	\$.06	2	\$.06	2	\$.06	2	\$.06	2	\$.06
	43 NUT	2	\$.07	2	\$.07	2	\$.07	2	\$.07	2	\$.07

CHEVROLET PICK UP TRUCKS

S-10

TREND

PRE POST

1

6

11

9

21



31



41



51

VEHICLE- 15- FORD F-100/F-150 PICK-UP

DESCRIPTION	ITEM NO.	QTY	MATL	WEIGHT	MATERIAL	VARIABLE LABOR	MANUFACTURING BURDEN	COST	TOTAL	WHOLESALE PRICE	CONSUMER PRICE	TOOLING
FORD F-100/F-150 PICK-UP		1		3.3666	1.1578	.9294	1.6282	3.7154	5.3386	6.0644	122.0	
ASM - FRONT S/BELT OUTBOARD ANCHOR	166701	2	ASSY	.2484	.1168	.1428	.2256	.4852	.6972	.7920	13.0	
ASM - FRONT S/BELT INBOARD ANCHOR	166711	2	ASSY	.5240	.1890	.1464	.2326	.5680	.8162	.9272	13.0	
ASM - FRONT S/BELT OUTBOARD ANCHOR	172701	2	ASSY	.2484	.1168	.1428	.2256	.4852	.6972	.7920	13.0	
ASM - FRONT S/BELT INBOARD ANCHOR	172711	2	ASSY	.5240	.1890	.1464	.2326	.5680	.8162	.9272	13.0	
ASM - FRONT S/BELT OUTBOARD ANCHOR	183701	2	ASSY	.9000	.2502	.0876	.1992	.5370	.7716	.8764	12.0	
ASM - FRONT S/BELT INBOARD ANCHOR	183711	2	ASSY	.4592	.1252	.0904	.2026	.4182	.6008	.6824	12.0	
ASM - SHOULDER BELT UPPER ANCHOR	183741	2	ASSY	.4626	.1708	.1730	.3100	.6538	.9394	1.0672	46.0	
ASSEMBLY COST												

ASM - FRONT S/BELT OUTBOARD ANCHOR	166701	2	ASSY	.1242	.0584	.0714	.1128	.2426	.3486	.3960	13.0	
ASM - ANCHOR PLATE	166704	1	ASSY	.1242	.0575	.0401	.0568	.1544	.2219	.2521	11.0	
ASSEMBLY COST												
ASM - ANCHOR PLATE	166704	2	ASSY	.1242	.0575	.0401	.0568	.1544	.2219	.2521	11.0	
ANCHOR - OUTBOARD FRONT	166702	1	HRS	.1012	.0279	.0087	.0265	.0631	.0907	.1030	10.0	
NUT	166703	1	STL	.0230	.0290			.0290	.0417	.0474		
ASSEMBLY COST												
ASM - FRONT S/BELT INBOARD ANCHOR	166711	2	ASSY	.2620	.0945	.0732	.1163	.2840	.4081	.4636	13.0	
ASM - ANCHOR FLATE	166714	1	ASSY	.2620	.0936	.0419	.0603	.1958	.2814	.3197	11.0	
ASSEMBLY COST												
ASM - ANCHOR FLATE	166714	2	ASSY	.2620	.0936	.0419	.0603	.1958	.2814	.3197	11.0	
ANCHOR - INBOARD FRONT	166712	1	HRS	.2390	.0640	.0105	.0300	.1045	.1502	.1706	10.0	

A-49

VEHICLE- 15- FORD F-100/F-150 PICK-UP

DESCRIPTION	ITEM NO.	QTY	MATL	WEIGHT	MATERIAL	LABOR	BURDEN	TOTAL	PRICE	PRICE	PRICE	PRICE
NUT	166713	1	STL	.0230	.0290			.0290	.0417			.0474
ASSEMBLY COST					.0006	.0314	.0303	.0623	.0895			.1017
ASM - FRONT S/BELT OUTBOARD ANCHOR	172701	2	ASSY	.1242	.0584	.0714	.1128	.2426	.3486			.3960
ASM - ANCHOR PLATE	172704	1	ASSY	.1242	.0575	.0401	.0568	.1544	.2219			.2521
ASSEMBLY COST					.0009	.0313	.0560	.0882	.1267			.1439
ASM - ANCHOR PLATE	172704	2	ASSY	.1242	.0575	.0401	.0568	.1544	.2219			.2521
ANCHOR - OUTBOARD FRONT	172702	1	HRS	.1012	.0279	.0087	.0265	.0631	.0907			.1030
NUT	172703	1	STL	.0230	.0290			.0290	.0417			.0474
ASSEMBLY COST					.0006	.0314	.0303	.0623	.0895			.1017
ASM - FRONT S/BELT INBOARD ANCHOR	172711	2	ASSY	.2620	.0945	.0732	.1163	.2840	.4081			.4636
ASM - ANCHOR PLATE	172714	1	ASSY	.2620	.0936	.0419	.0603	.1958	.2814			.3197
ASSEMBLY COST					.0009	.0313	.0560	.0882	.1267			.1439
ASM - ANCHOR PLATE	172714	2	ASSY	.2620	.0936	.0419	.0603	.1958	.2814			.3197
ANCHOR - INBOARD FRONT	172712	1	HRS	.2390	.0640	.0105	.0300	.1045	.1502			.1706
NUT	172713	1	STL	.0230	.0290			.0290	.0417			.0474
ASSEMBLY COST					.0006	.0314	.0303	.0623	.0895			.1017
ASM - FRONT S/BELT OUTBOARD ANCHOR	183701	2	ASSY	.4500	.1251	.0438	.0996	.2685	.3858			.4382
ASM - ANCHOR PLATE	183702	1	ASSY	.4500	.1242	.0125	.0436	.1803	.2591			.2943
ASSEMBLY COST					.0009	.0313	.0560	.0882	.1267			.1439
ASM - FRONT S/BELT INBOARD ANCHOR	183711	2	ASSY	.2296	.0626	.0452	.1013	.2091	.3004			.3412
ASM - ANCHOR PLATE	183712	1	ASSY	.2296	.0617	.0139	.0453	.1209	.1737			.1973
ASSEMBLY COST					.0009	.0313	.0560	.0882	.1267			.1439
ASM - SHOULDER BELT UPPER ANCHOR	183741	2	ASSY	.2313	.0854	.0865	.1550	.3269	.4697			.5336
ASM - ANCHOR PLATE	183744	1	ASSY	.2313	.0845	.0552	.0990	.2387	.3430			.3897
ASSEMBLY COST					.0009	.0313	.0560	.0882	.1267			.1439

A-50

COST SUMMARY OF FMVSS 210

VOLUME- 300000

VEHICLE- 15- FORD F-100/F-150 PICK-UP

DESCRIPTION	ITEM NO.	QTY	MTRL	WEIGHT	VARIABLE MANUFACTURING COST			WHOLESALE CONSUMER TOOLING				
					MATERIAL	LABOR	BURDEN	TOTAL	PRICE	PRICE	PRICE	PRICE
ASM - ANCHOR PLATE	183744	1	2	ASSY	.2313	.0845	.0552	.0990	.2387	.3430	.3897	26.0
ANCHOR - UPPER SHOULDER BELT	183742	1	1	HRS	.2160	.0589	.0238	.0687	.1514	.2176	.2472	25.0
NUT	183743	1	1	HRS	.0153	.0250			.0250	.0359	.0408	
ASSEMBLY COST						.0006	.0314	.0303	.0623	.0895	.1017	1.0

COMPONENT NO	NAME	PRE		POST		TREND		POST/PRE		TREND/PRE		TREND/POST	
		FCS RQD	\$ WEIGHT	FCS RQD	\$ WEIGHT	FCS RQD	\$ WEIGHT	FCS RQD	\$ WEIGHT	FCS RQD	\$ WEIGHT	FCS RQD	\$ WEIGHT
01	ASM - FRONT S/BELT OUTBOARD ANCHOR	2	\$.49	2	\$.25	2	\$.54	2	\$.00	2	\$.05	2	\$.05
04	ASM - ANCHOR PLATE	2	\$.31	2	\$.25		\$.90		\$.00		\$.65		\$.65
02	PLATE	2	\$.13	2	\$.20	2	\$.36	2	\$.00	2	\$.23	2	\$.23
03	NUT	2	\$.06	2	\$.05		\$.90		\$.00		\$.70		\$.70
11	ASM - FRONT S/BELT INBOARD ANCHOR	2	\$.57	2	\$.52	2	\$.42	2	\$.00	2	\$.15	2	\$.15
14	ASM - ANCHOR PLATE	2	\$.39	2	\$.52		\$.46		\$.00		\$.06		\$.06
12	PLATE	2	\$.21	2	\$.48	2	\$.24	2	\$.00	2	\$.03	2	\$.03
13	NUT	2	\$.06	2	\$.05		\$.46		\$.00		\$.02		\$.02
41	ASM - SHOULDER BELT UPPER ANCHOR	2	\$.65	2	\$.46		\$.65		\$.00		\$.65		\$.65
44	ASM - ANCHOR PLATE	2	\$.48	2	\$.46		\$.48		\$.00		\$.48		\$.48
42	PLATE	2	\$.30	2	\$.43	2	\$.30	2	\$.00	2	\$.30	2	\$.30
43	NUT	2	\$.05	2	\$.03		\$.05		\$.00		\$.05		\$.05

FORD PICK UP TRUCKS

150

100

100

TREND

POST

PRE

[REDACTED]

[REDACTED]

[REDACTED]

1

[REDACTED]

[REDACTED]

[REDACTED]

11

21

31

[REDACTED]

41

COST SUMMARY OF FMVSS 210

VOLUME- 300000

VEHICLE- 16- FORD RANGER PICK-UP

DESCRIPTION	ITEM NO.	QTY	MATL	WEIGHT	MATERIAL	VARIABLE MANUFACTURING COST	TOTAL	WHOLESALE PRICE	CONSUMER PRICE	TOOLING
FORD RANGER PICK-UP		1		1.8218	.5462	.7118	1.6090	2.3118	2.6260	70.0
ASM - FRONT S/BELT OUTBOARD ANCHOR	183701	2	ASSY	.9000	.2502	.1992	.5370	.7716	.8764	12.0
ASM - FRONT S/BELT INBOARD ANCHOR	183741	2	ASSY	.4592	.1252	.2026	.4182	.6008	.6824	12.0
ASM - SHOULDER BELT UPPER ANCHOR	183741	2	ASSY	.4626	.1708	.3100	.6538	.9394	1.0672	46.0

ASSEMBLY COST

ASM - FRONT S/BELT OUTBOARD ANCHOR	183701	2	ASSY	.4500	.1251	.0996	.2685	.3858	.4382	12.0
ANCHOR - OUTBOARD FRONT	183702	1	HRS	.4500	.1242	.0436	.1803	.2591	.2943	10.0
ASSEMBLY COST					.0009	.0313	.0882	.1267	.1439	2.0

A-54

ASM - FRONT S/BELT INBOARD ANCHOR	183741	2	ASSY	.2296	.0626	.1013	.2091	.3004	.3412	12.0
ANCHOR - INBOARD FRONT	183742	1	HRS	.2296	.0617	.0453	.1209	.1737	.1973	10.0
ASSEMBLY COST					.0009	.0313	.0882	.1267	.1439	2.0

ASM - SHOULDER BELT UPPER ANCHOR	183741	2	ASSY	.2313	.0854	.1550	.3269	.4697	.5336	46.0
ASM - ANCHOR PLATE	183744	1	ASSY	.2313	.0845	.0990	.2387	.3430	.3897	26.0
ASSEMBLY COST					.0009	.0313	.0882	.1267	.1439	20.0

ASM - ANCHOR PLATE	183744	2	ASSY	.2313	.0845	.0990	.2387	.3430	.3897	26.0
ANCHOR - UPPER	183742	1	HRS	.2160	.0589	.0687	.1514	.2176	.2472	25.0
NUT	183743	1	STL	.0153	.0250		.0250	.0359	.0408	
ASSEMBLY COST					.0006	.0314	.0623	.0895	.1017	1.0

DATE 2/05/85
PRE-

COST-WEIGHT COMPARISON CHART---FMVSS 210
POST-

TREND-1983 FORD RANGER PICKUP

PAGE 10

COMPONENT NO	NAME	PRE		POST		TREND		POST/PRE		TREND/PRE		TREND/POST	
		FCS RQD	\$ WEIGHT	FCS RQD	\$ WEIGHT	\$ WEIGHT	\$ WEIGHT	\$ WEIGHT	\$ WEIGHT	\$ WEIGHT	\$ WEIGHT	\$ WEIGHT	\$ WEIGHT

01	ASM - FRONT S/BELT OUTBOARD ANCHOR	2	.54	2	.54	2	.54	2	.54	2	.54	2	.54
	02 PLATE	2	.90	2	.90	2	.90	2	.90	2	.90	2	.90

11	ASM - FRONT S/BELT INBOARD ANCHOR	2	.42	2	.42	2	.42	2	.42	2	.42	2	.42
	12 PLATE	2	.46	2	.46	2	.46	2	.46	2	.46	2	.46

41	ASM - SHOULDER BELT UPPER ANCHOR	2	.65	2	.65	2	.65	2	.65	2	.65	2	.65
	44 ASM - ANCHOR PLATE	2	.46	2	.46	2	.46	2	.46	2	.46	2	.46
	42 PLATE	2	.48	2	.48	2	.48	2	.48	2	.48	2	.48
	43 NUT	2	.46	2	.46	2	.46	2	.46	2	.46	2	.46
		2	.30	2	.30	2	.30	2	.30	2	.30	2	.30
		2	.43	2	.43	2	.43	2	.43	2	.43	2	.43
		2	.05	2	.05	2	.05	2	.05	2	.05	2	.05
		2	.03	2	.03	2	.03	2	.03	2	.03	2	.03

FORD PICK UP TRUCKS

RANGER

TREND

POST

PRE

10

1

11

21

31

41

51

VEHICLE- 17- CHEVROLET BLAZER

DESCRIPTION	ITEM NO.	QTY	MATL	WEIGHT	MATERIAL	VARIABLE LABOR	MANUFACTURING BURDEN	COST TOTAL	WHOLESALE PRICE	CONSUMER PRICE	TOOLING
CHEVROLET BLAZER											
ASM - FRONT S/BELT OUTBOARD ANCHOR	173701	1		1.4634	.6396	.5678	.8540	2.0614	2.9622	3.3654	66.0
					.0598	.0626	.1120	.2344	.3368	.3826	2.0
ASM - FRONT S/BELT INBOARD ANCHOR	173711	2		4.002	1.582	1.446	2.276	5.304	7.622	8.660	18.0
					.0598	.0626	.1120	.2344	.3368	.3826	2.0
ASM - FRONT S/BELT INBOARD ANCHOR	183711	2		4.660	1.764	1.468	2.310	5.542	7.964	9.048	13.0
					.1854	.1512	.1714	.5080	.7300	.8294	31.0

ASSEMBLY COST

ASM - FRONT S/BELT OUTBOARD ANCHOR	173701	2		.0230	.0299	.0313	.0560	.1172	.1684	.1913	2.0
NUT	173703	1		.0230	.0290			.0290	.0417	.0474	
ASSEMBLY COST					.0009	.0313	.0560	.0882	.1267	.1439	2.0
ASM - FRONT S/BELT INBOARD ANCHOR	173711	2		.2001	.0791	.0723	.1138	.2652	.3811	.4330	18.0
ASM - ANCHOR PLATE	173714	1		.2001	.0782	.0410	.0578	.1770	.2544	.2891	16.0
ASSEMBLY COST					.0009	.0313	.0560	.0882	.1267	.1439	2.0
ASM - ANCHOR FLATE	173714	2		.2001	.0782	.0410	.0578	.1770	.2544	.2891	16.0
ANCHOR - INBOARD FRONT	173712	1		.1771	.0486	.0096	.0275	.0857	.1232	.1400	15.0
NUT	173713	1		.0230	.0290			.0290	.0417	.0474	
ASSEMBLY COST					.0006	.0314	.0303	.0623	.0895	.1017	1.0
ASM - FRONT S/BELT OUTBOARD ANCHOR	183701	2		.0230	.0299	.0313	.0560	.1172	.1684	.1913	2.0
NUT	183703	1		.0230	.0290			.0290	.0417	.0474	
ASSEMBLY COST					.0009	.0313	.0560	.0882	.1267	.1439	2.0
ASM - FRONT S/BELT INBOARD ANCHOR	183711	2		.2330	.0882	.0734	.1155	.2771	.3982	.4524	13.0
ASM - ANCHOR FLATE	183714	1		.2330	.0873	.0421	.0595	.1889	.2715	.3085	11.0
ASSEMBLY COST					.0009	.0313	.0560	.0882	.1267	.1439	2.0

VEHICLE- 17- CHEVROLET BLAZER

DESCRIPTION	ITEM NO.	QTY	MATL	WEIGHT	MATERIAL	VARIABLE LABOR	MANUFACTURING BURDEN	COST	TOTAL	WHOLESALE PRICE	CONSUMER PRICE	TOOLING
ASM - ANCHOR PLATE	183714	2	1	2330	.0873	.0421	.0595	.1889	.2715	.3085	11.0	
ANCHOR - INWARD FRONT	183712	1	1	2100	.0577	.0107	.0292	.0976	.1403	.1594	10.0	
NUT	183713	1	1	0230	.0290			.0290	.0417	.0474		
ASSEMBLY COST					.0006	.0314	.0303	.0623	.0895	.1017	1.0	
ASM - SHOULDER BELT UPPER ANCHOR	183741	2	1	2526	.0927	.0756	.0857	.2540	.3650	.4147	31.0	
ASM - ANCHOR PLATE	183744	1	1	2526	.0921	.0442	.0554	.1917	.2755	.3130	11.0	
ASSEMBLY COST					.0006	.0314	.0303	.0623	.0895	.1017	20.0	
ASM - ANCHOR PLATE	183744	2	1	2526	.0921	.0442	.0554	.1917	.2755	.3130	11.0	
ANCHOR - UPPER	183742	1	1	2296	.0625	.0128	.0251	.1004	.1443	.1639	10.0	
NUT	183743	1	1	0230	.0290			.0290	.0417	.0474		
ASSEMBLY COST					.0006	.0314	.0303	.0623	.0895	.1017	1.0	

DATE 2/05/85
PRE-

COST-WEIGHT COMPARISON CHART---FMVSS 210
POST-1973 CHEVROLET BLAZER

PAGE 11
TREND-1983 CHEVROLET BLAZER

COMPONENT NO	NAME	PRE		POST		TREND		POST/PRE		TREND/PRE		TREND/POST	
		FCS RQD	\$ WEIGHT	FCS RQD	\$ WEIGHT	\$ COST	WGT #	\$ COST	WGT #	\$ COST	WGT #	\$ COST	WGT #
01	ASM - FRONT S/BELT OUTBOARD ANCHOR	2	\$.23	2	\$.23	2	\$.23	2	\$.23	2	\$.23	2	\$.23
03	NUT	2	\$.05	2	\$.05	2	\$.05	2	\$.05	2	\$.05	2	\$.05
11	ASM - FRONT S/BELT INBOARD ANCHOR	2	\$.53	2	\$.53	2	\$.53	2	\$.53	2	\$.53	2	\$.53
14	ASM - ANCHOR PLATE	2	\$.40	2	\$.35	2	\$.38	2	\$.40	2	\$.47	2	\$.47
12	PLATE	2	\$.40	2	\$.17	2	\$.40	2	\$.40	2	\$.47	2	\$.47
13	NUT	2	\$.35	2	\$.17	2	\$.42	2	\$.35	2	\$.42	2	\$.42
41	ASM - SHOULDER BELT UPPER ANCHOR	2	\$.06	2	\$.06	2	\$.06	2	\$.06	2	\$.06	2	\$.06
44	ASM - ANCHOR PLATE	2	\$.51	2	\$.51	2	\$.51	2	\$.51	2	\$.51	2	\$.51
42	PLATE	2	\$.38	2	\$.38	2	\$.38	2	\$.38	2	\$.38	2	\$.38
43	NUT	2	\$.51	2	\$.20	2	\$.51	2	\$.51	2	\$.51	2	\$.51
		2	\$.46	2	\$.46	2	\$.46	2	\$.46	2	\$.46	2	\$.46
		2	\$.06	2	\$.06	2	\$.06	2	\$.06	2	\$.06	2	\$.06
		2	\$.05	2	\$.05	2	\$.05	2	\$.05	2	\$.05	2	\$.05

MULTI PURPOSE VEHICLE

BLAZER

BLAZER

TREND

POST

PRE

1

1

1

1

1

11

21

31

41

51

VEHICLE- 18-

DESCRIPTION	ITEM NO.	QTY	MATL	WEIGHT	MATERIAL	VARIABLE MANUFACTURING COST	LABOR	BURDEN	TOTAL	PRICE	CONSUMER PRICE	TOOLING
FORD BRONCO												
ASM - FRONT S/BELT OUTBOARD ANCHOR	166701	2	ASSY	3.3362	.9726	.6806	1.3798	3.0330	4.3574	4.9492	118.0	
					.1066	.0824	.1670	.3560	.5114	.5808	12.0	
ASM - FRONT S/BELT INBOARD ANCHOR	166711	2	ASSY	3.786	.1066	.0824	.1670	.3560	.5114	.5808	12.0	
					.1066	.0824	.1670	.3560	.5114	.5808	12.0	
ASM - FRONT S/BELT OUTBOARD ANCHOR	172701	2	ASSY	3.786	.1066	.0824	.1670	.3560	.5114	.5808	12.0	
					.1066	.0824	.1670	.3560	.5114	.5808	12.0	
ASM - FRONT S/BELT INBOARD ANCHOR	172711	2	ASSY	3.786	.1066	.0824	.1670	.3560	.5114	.5808	12.0	
					.2502	.0876	.1992	.5370	.7716	.8764	12.0	
ASM - FRONT S/BELT INBOARD ANCHOR	183711	2	ASSY	.4592	.1252	.0904	.2026	.4182	.6008	.6824	12.0	
					.1708	.1730	.3100	.6538	.9394	1.0672	46.0	
ASM - SHOULDER BELT UPPER ANCHOR	183741	2	ASSY	.4626								
ASSEMBLY COST												

ASSEMBLY COST

ASM - FRONT S/BELT OUTBOARD ANCHOR	166701	2	ASSY	.1893	.0533	.0412	.0835	.1780	.2557	.2904	12.0	
ANCHOR - OUTBOARD FRONT	166702	1	HRS	.1893	.0524	.0099	.0275	.0898	.1290	.1465	10.0	
ASSEMBLY COST					.0009	.0313	.0560	.0882	.1267	.1439	2.0	
ASM - FRONT S/BELT INBOARD ANCHOR	166711	2	ASSY	.1893	.0533	.0412	.0835	.1780	.2557	.2904	12.0	
ANCHOR - INBOARD FRONT	166712	1	HRS	.1893	.0524	.0099	.0275	.0898	.1290	.1465	10.0	
ASSEMBLY COST					.0009	.0313	.0560	.0882	.1267	.1439	2.0	
ASM - FRONT S/BELT OUTBOARD ANCHOR	172701	2	ASSY	.1893	.0533	.0412	.0835	.1780	.2557	.2904	12.0	
ANCHOR - OUTBOARD FRONT	172702	1	HRS	.1893	.0524	.0099	.0275	.0898	.1290	.1465	10.0	
ASSEMBLY COST					.0009	.0313	.0560	.0882	.1267	.1439	2.0	
ASM - FRONT S/BELT INBOARD ANCHOR	172711	2	ASSY	.1893	.0533	.0412	.0835	.1780	.2557	.2904	12.0	
ANCHOR - INBOARD FRONT	172712	1	HRS	.1893	.0524	.0099	.0275	.0898	.1290	.1465	10.0	
ASSEMBLY COST					.0009	.0313	.0560	.0882	.1267	.1439	2.0	

VEHICLE- 18- FORD BRONCO

DESCRIPTION	ITEM NO.	QTY	MATL	WEIGHT	MATERIAL	LABOR	BURDEN	TOTAL	WHOLESALE PRICE	CONSUMER PRICE	TOOLING
ASM - FRONT S/BELT OUTBOARD ANCHOR	183701	2	ASSY	.4500	.1251	.0438	.0996	.2685	.3858	.4382	12.0
ANCHOR - OUTBOARD FRONT	183702	1	HRS	.4500	.1242	.0125	.0436	.1803	.2591	.2943	10.0
ASSEMBLY COST					.0009	.0313	.0560	.0882	.1267	.1439	2.0
ASM - FRONT S/BELT INBOARD ANCHOR	183711	2	ASSY	.2296	.0626	.0452	.1013	.2091	.3004	.3412	12.0
ANCHOR - INBOARD FRONT	183712	1	HRS	.2296	.0617	.0139	.0453	.1209	.1737	.1973	10.0
ASSEMBLY COST					.0009	.0313	.0560	.0882	.1267	.1439	2.0
ASM - SHOULDER BELT UPPER ANCHOR	183741	2	ASSY	.2313	.0854	.0865	.1550	.3269	.4697	.5336	46.0
ASM - ANCHOR FLATE	183744	1	ASSY	.2313	.0845	.0552	.0990	.2387	.3430	.3897	26.0
ASSEMBLY COST					.0009	.0313	.0560	.0882	.1267	.1439	20.0
ASM - ANCHOR FLATE	183744	2	ASSY	.2313	.0845	.0552	.0990	.2387	.3430	.3897	26.0
ANCHOR - UPPER	183742	1	HRS	.2160	.0589	.0238	.0687	.1514	.2176	.2472	25.0
NUT	183743	1	STL	.0153	.0250			.0250	.0359	.0408	
ASSEMBLY COST					.0006	.0314	.0303	.0623	.0895	.1017	1.0

A-62

COMPONENT NO	NAME	PRE		POST		TREND		POST/FRE		TREND/FRE		TREND/FOST	
		PCS RQD	\$ WEIGHT	FCS RQD	\$ WEIGHT	\$ COST	\$ WEIGHT	\$ COST	\$ COST	\$ WGT	\$ COST	\$ WGT	\$ COST
01	ASM - FRONT S/BELT OUTBOARD ANCHOR	2	\$.36	2	\$.36	2	\$.54	\$.00	\$.18	\$.18	\$.52	\$.18	\$.52
02	PLATE	2	\$.38	2	\$.38	2	\$.36	\$.00	\$.18	\$.18	\$.52	\$.18	\$.52
11	ASM - FRONT S/BELT INBOARD ANCHOR	2	\$.36	2	\$.36	2	\$.42	\$.00	\$.06	\$.06	\$.46	\$.06	\$.46
12	PLATE	2	\$.38	2	\$.38	2	\$.24	\$.00	\$.06	\$.06	\$.46	\$.06	\$.46
41	ASM - SHOULDER BELT UPPER ANCHOR	2	\$.65	2	\$.65	2	\$.46	\$.48	\$.46	\$.48	\$.46	\$.48	\$.46
44	ASM - ANCHOR FLATE	2	\$.46	2	\$.46	2	\$.30	\$.30	\$.30	\$.30	\$.43	\$.43	\$.43
42	PLATE	2	\$.38	2	\$.38	2	\$.05	\$.05	\$.05	\$.05	\$.03	\$.03	\$.03
43	NUT	2	\$.03	2	\$.03	2	\$.03	\$.03	\$.03	\$.03	\$.03	\$.03	\$.03

MULTI PURPOSE VEHICLE

BRONCO BRONCO BRONCO

PRE POST TREND

1

11

27

31

41

COST SUMMARY OF FMVSS 210

VEHICLE- 19- DODGE RAM CHARGER

DESCRIPTION	ITEM NO.	QTY	MATL	WEIGHT	MATERIAL	LABOR	BURDEN	TOTAL	PRICE	PRICE	TOTAL
DODGE RAM CHARGER											
ASM - FRONT S/BELT OUTBOARD ANCHOR	73701	2	ASSY	.4580	.2506	.1378	.2280	.6164	.8956	1.0058	29.0
ASM - FRONT S/BELT INBOARD ANCHOR	73711	2	ASSY	.5158	.2290	.2136	.3378	.7804	1.1212	1.2736	65.0
ASM - FRONT S/BELT OUTBOARD ANCHOR	83701	2	ASSY	.5260	.1934	.1600	.2900	.6434	.9244	1.0502	18.0
ASM - FRONT S/BELT INBOARD ANCHOR	83711	2	ASSY	.2400	.0692	.1422	.2290	.4404	.6328	.7188	14.0
ASM - SHOULDER BELT UPPER ANCHOR	83741	2	ASSY	.2400	.0692	.1422	.2290	.4404	.6328	.7188	14.0
ASM - SHOULDER BELT LOWER ANCHOR	83751	2	ASSY	.2400	.0692	.1422	.2290	.4404	.6328	.7188	14.0
ASSEMBLY COST											

ASM - FRONT S/BELT OUTBOARD ANCHOR	73701	2	ASSY	.2290	.1253	.0689	.1140	.3082	.4428	.5029	29.0
ASM - ANCHOR PLATE	73704	1	ASSY	.2290	.1244	.0376	.0580	.2200	.3161	.3590	27.0
ASSEMBLY COST											

ASM - ANCHOR PLATE	73704	2	ASSY	.2290	.1244	.0376	.0580	.2200	.3161	.3590	27.0
ANCHOR - OUTBOARD FRONT	73702	1	G/ST	.1560	.0679	.0125	.0348	.1152	.1655	.1890	25.0
NUT	73703	1	HRS	.0730	.0560			.0560	.0805	.0914	
ASSEMBLY COST											

ASM - FRONT S/BELT INBOARD ANCHOR	73711	2	ASSY	.2579	.1145	.1068	.1689	.3902	.5606	.6368	65.0
ASM - ANCHOR PLATE & COVER	73716	1	ASSY	.2579	.1136	.0755	.1129	.3020	.4339	.4929	63.0
ASSEMBLY COST											

ASM - ANCHOR PLATE	73714	2	ASSY	.2349	.0889	.0376	.0594	.1859	.2671	.3034	27.0
ANCHOR - INBOARD FRONT	73712	1	HRS	.1949	.0564	.0125	.0362	.1051	.1510	.1715	25.0
NUT	73713	1	HRS	.0400	.0320			.0320	.0460	.0523	
ASSEMBLY COST											

VEHICLE - 19- DODGE RAM CHARGER

DESCRIPTION	ITEM NO.	QTY	MTRL	WEIGHT	VARIABLE MANUFACTURING COST		WHOLESALE CONSUMER TOOLING				
					LABOR	BURDEN	PRICE	PRICE			
ASM - ANCHOR PLATE & COVER	173716	2	ASSY	.2579	.1136	.0755	.1129	.3020	.4339	.4929	63.0
ASM - ANCHOR PLATE	173714	1	ASSY	.2349	.0889	.0376	.0594	.1859	.2671	.3034	27.0
COVER - ANCHOR NUT	173715	1	CRS	.0230	.0091	.0125	.0348	.0564	.0810	.0920	35.0
ASSEMBLY COST					.0156	.0254	.0187	.0597	.0858	.0975	1.0
ASM - FRONT S/BELT OUTBOARD ANCHOR	183701	2	ASSY	.2630	.0967	.0800	.1450	.3217	.4622	.5251	18.0
ASM - ANCHOR PLATE	183704	1	ASSY	.2630	.0958	.0487	.0890	.2335	.3355	.3812	16.0
ASSEMBLY COST					.0009	.0313	.0560	.0882	.1267	.1439	2.0
ASM - ANCHOR PLATE	183704	2	ASSY	.2630	.0958	.0487	.0890	.2335	.3355	.3812	16.0
ANCHOR - OUTBOARD FRONT	183702	1	HRS	.2400	.0662	.0173	.0587	.1422	.2043	.2321	15.0
NUT	183703	1	STL	.0230	.0290			.0290	.0417	.0474	
ASSEMBLY COST					.0006	.0314	.0303	.0623	.0895	.1017	1.0
ASM - FRONT S/BELT INBOARD ANCHOR	183711	2	ASSY	.1200	.0346	.0711	.1145	.2202	.3164	.3594	14.0
ANCHOR - INBOARD FRONT	183712	1	HRS	.1200	.0337	.0398	.0595	.1320	.1897	.2155	12.0
ASSEMBLY COST					.0009	.0313	.0560	.0882	.1267	.1439	2.0
ASM - SHOULDER BELT UPPER ANCHOR	183741	2	ASSY	.1200	.0346	.0711	.1145	.2202	.3164	.3594	14.0
ANCHOR - UPPER	183742	1	HRS	.1200	.0337	.0398	.0595	.1320	.1897	.2155	12.0
ASSEMBLY COST					.0009	.0313	.0560	.0882	.1267	.1439	2.0
ASM - SHOULDER BELT LOWER ANCHOR	183751	2	ASSY	.1200	.0346	.0711	.1145	.2202	.3164	.3594	14.0
ANCHOR - LOWER	183752	1	HRS	.1200	.0337	.0398	.0585	.1320	.1897	.2155	12.0
ASSEMBLY COST					.0009	.0313	.0560	.0882	.1267	.1439	2.0

COMPONENT NO	NAME	PRE		POST		TREND		POST/PRE		TREND/PRE		TREND/POST	
		PCS RQD	\$ WEIGHT	PCS RQD	\$ WEIGHT	\$ WEIGHT	\$ WGT	\$ COST	\$ WGT	\$ COST	\$ WGT	\$ COST	\$ WGT
01	ASM - FRONT S/BELT OUTBOARD ANCHOR	2	\$.62	2	\$.64	2	\$.62	2	\$.64	2	\$.64	2	\$.62
			.46		.53		.46		.53		.53		.46
04	ASM - ANCHOR PLATE	2	\$.44	2	\$.47	2	\$.44	2	\$.47	2	\$.47	2	\$.44
			.46		.53		.46		.53		.53		.46
02	PLATE	2	\$.23	2	\$.28	2	\$.23	2	\$.28	2	\$.28	2	\$.23
			.31		.48		.31		.48		.48		.31
03	NUT	2	\$.11	2	\$.06	2	\$.11	2	\$.06	2	\$.06	2	\$.05
			.15		.05		.15		.05		.05		.10
11	ASM - FRONT S/BELT INBOARD ANCHOR	2	\$.78	2	\$.44	2	\$.78	2	\$.44	2	\$.44	2	\$.34
			.52		.24		.52		.24		.24		.28
16	ASM - ANCHOR PLATE & COVER OR ASM - ANCHOR PLATE & COVER	2	\$.60	2	\$.52	2	\$.60	2	\$.52	2	\$.52	2	\$.60
			.37		.37		.37		.37		.37		.37
14	ASM - ANCHOR PLATE	2	\$.47	2	\$.26	2	\$.47	2	\$.26	2	\$.26	2	\$.47
			.21		.24		.21		.24		.24		.21
12	PLATE	2	\$.39	2	\$.39	2	\$.39	2	\$.39	2	\$.39	2	\$.15
			.06		.06		.06		.06		.06		.06
13	NUT	2	\$.08	2	\$.08	2	\$.08	2	\$.08	2	\$.08	2	\$.08
			.08		.08		.08		.08		.08		.08
41	ASM - SHOULDER BELT UPPER ANCHOR	2	\$.44	2	\$.44	2	\$.44	2	\$.44	2	\$.44	2	\$.44
			.24		.24		.24		.24		.24		.24
42	PLATE	2	\$.26	2	\$.26	2	\$.26	2	\$.26	2	\$.26	2	\$.26
			.24		.24		.24		.24		.24		.24
51	ASM - SHOULDER BELT LOWER ANCHOR	2	\$.44	2	\$.44	2	\$.44	2	\$.44	2	\$.44	2	\$.44
			.24		.24		.24		.24		.24		.24
52	PLATE	2	\$.26	2	\$.26	2	\$.26	2	\$.26	2	\$.26	2	\$.26
			.24		.24		.24		.24		.24		.24

MULTI PURPOSE VEHICLE

RAMCHARGER RAMCHARGER

PRE POST TREND



1



11

21

31



41



51

VEHICLE- 20- JEEP CJ

DESCRIPTION	ITEM NO.	QTY	MATL	WEIGHT	MATERIAL	VARIABLE MANUFACTURING COST	TOTAL	WHOLESALE PRICE	CONSUMER PRICE	TOOLING COST	
JEEP CJ		1		2.8230	1.3084	3.5784	3.9060	8.7928	12.6352	14.3542	128.0
ASM - FRONT S/BELT OUTBOARD ANCHOR	66701	2	ASSY	.7480	.2534	.1532	.2530	.6596	.9478	1.0768	13.0
ASM - FRONT S/BELT INBOARD ANCHOR	66711	2	ASSY	.2484	.1168	.1428	.2256	.4852	.6972	.7920	13.0
ASM - FRONT S/BELT OUTBOARD ANCHOR	73701	2	ASSY	.7480	.2534	.1532	.2530	.6596	.9478	1.0768	13.0
ASM - FRONT S/BELT INBOARD ANCHOR	73711	2	ASSY	.2484	.1168	.1428	.2256	.4852	.6972	.7920	13.0
ASM - FRONT S/BELT OUTBOARD ANCHOR	83701	2	ASSY	.2316	.1122	.1428	.2256	.4806	.6906	.7846	13.0
ASM - FRONT S/BELT INBOARD ANCHOR	83711	2	ASSY	.2316	.1122	.1428	.2256	.4806	.6906	.7846	13.0
ASM - SHOULDER BELT UPPER ANCHOR	83741	2	ASSY	.2138	.2204	1.3504	1.2488	2.8196	4.0518	4.6030	25.0
ASM - SHOULDER BELT LOWER ANCHOR	83751	2	ASSY	.1532	.1232	1.3504	1.2488	2.7224	3.9122	4.4444	25.0
ASSEMBLY COST											

A-69

ASM - FRONT S/BELT OUTBOARD ANCHOR	66701	2	ASSY	.3740	.1267	.0766	.1265	.3298	.4739	.5384	13.0
ASM - ANCHOR FLATE	66704	1	ASSY	.3740	.1258	.0453	.0705	.2416	.3472	.3945	11.0
ASSEMBLY COST					.0009	.0313	.0560	.0882	.1267	.1439	2.0
ASM - ANCHOR FLATE	66704	2	ASSY	.3740	.1258	.0453	.0705	.2416	.3472	.3945	11.0
ANCHOR - OUTBOARD FRONT	66702	1	HRS	.3510	.0962	.0139	.0402	.1503	.2160	.2454	10.0
NUT	66703	1	STL	.0230	.0290			.0290	.0417	.0474	
ASSEMBLY COST					.0006	.0314	.0303	.0623	.0895	.1017	1.0
ASM - FRONT S/BELT INBOARD ANCHOR	66711	2	ASSY	.1242	.0584	.0714	.1128	.2426	.3486	.3960	13.0
ASM - ANCHOR FLATE	66714	1	ASSY	.1242	.0575	.0401	.0568	.1544	.2219	.2521	11.0
ASSEMBLY COST					.0009	.0313	.0560	.0882	.1267	.1439	2.0
ASM - ANCHOR FLATE	66714	2	ASSY	.1242	.0575	.0401	.0568	.1544	.2219	.2521	11.0
ANCHOR - INBOARD FRONT	66712	1	HRS	.1012	.0279	.0087	.0265	.0631	.0907	.1030	10.0

VEHICLE- 20- JEEP CJ

DESCRIPTION	ITEM NO.	QTY	MATL	WEIGHT	MATERIAL	LABOR	VARIABLE MANUFACTURING COST	TOTAL	WHOLESALE PRICE	CONSUMER PRICE	TOOLING
NUT	166713	1	1STL	.0230	.0290			.0290	.0417	.0474	
ASSEMBLY COST					.0006	.0314	.0303	.0623	.0895	.1017	1.0
ASM - FRONT S/BELT OUTBOARD ANCHOR	173701	2	1ASSY	.3740	.1267	.0766	.1265	.3298	.4739	.5384	13.0
ASM - ANCHOR PLATE	173704	1	1ASSY	.3740	.1258	.0453	.0705	.2416	.3472	.3945	11.0
ASSEMBLY COST					.0009	.0313	.0560	.0882	.1267	.1439	2.0
ASM - ANCHOR FLATE	173704	2	1ASSY	.3740	.1258	.0453	.0705	.2416	.3472	.3945	11.0
ANCHOR - OUTBOARD FRONT	173702	1	1HRS	.3510	.0962	.0139	.0402	.1503	.2160	.2454	10.0
NUT	173703	1	1STL	.0230	.0290			.0290	.0417	.0474	
ASSEMBLY COST					.0006	.0314	.0303	.0623	.0895	.1017	1.0
ASM - FRONT S/BELT INBOARD ANCHOR	173711	2	1ASSY	.1242	.0584	.0714	.1128	.2426	.3486	.3960	13.0
ASM - ANCHOR PLATE	173714	1	1ASSY	.1242	.0575	.0401	.0568	.1544	.2219	.2521	11.0
ASSEMBLY COST					.0009	.0313	.0560	.0882	.1267	.1439	2.0
ASM - ANCHOR PLATE	173714	2	1ASSY	.1242	.0575	.0401	.0568	.1544	.2219	.2521	11.0
ANCHOR - INBOARD FRONT	173712	1	1HRS	.1012	.0279	.0087	.0265	.0631	.0907	.1030	10.0
NUT	173713	1	1STL	.0230	.0290			.0290	.0417	.0474	
ASSEMBLY COST					.0006	.0314	.0303	.0623	.0895	.1017	1.0
ASM - FRONT S/BELT OUTBOARD ANCHOR	183701	2	1ASSY	.1158	.0561	.0714	.1128	.2403	.3453	.3923	13.0
ASM - ANCHOR PLATE	183704	1	1ASSY	.1158	.0552	.0401	.0568	.1521	.2186	.2484	11.0
ASSEMBLY COST					.0009	.0313	.0560	.0882	.1267	.1439	2.0
ASM - ANCHOR FLATE	183704	2	1ASSY	.1158	.0552	.0401	.0568	.1521	.2186	.2484	11.0
ANCHOR - OUTBOARD FRONT	183702	1	1HRS	.0928	.0256	.0087	.0265	.0608	.0874	.0993	10.0
NUT	183703	1	1STL	.0230	.0290			.0290	.0417	.0474	
ASSEMBLY COST					.0006	.0314	.0303	.0623	.0895	.1017	1.0

A-70

VEHICLE- 20- JEEP CJ

DESCRIPTION	ITEM NO.	QTY	MATL	WEIGHT	MATERIAL	VARIABLE MANUFACTURING COST	TOTAL	PRICE	CONSUMER PRICE	TOOLING
ASM - FRONT S/BELT INBOARD ANCHOR	183711	2	ASSY	.1158	.0561	.0714	.1128	.2403	.3453	.3923
ASM - ANCHOR PLATE	183714	1	ASSY	.1158	.0552	.0401	.0568	.1521	.2186	.2484
ASSEMBLY COST					.0009	.0313	.0560	.0882	.1267	.1439
ASM - ANCHOR PLATE	183714	2	ASSY	.1158	.0552	.0401	.0568	.1521	.2186	.2484
ANCHOR - INBOARD FRONT	183712	1	HRS	.0928	.0256	.0087	.0265	.0608	.0874	.0993
NUT	183713	1	STL	.0230	.0290			.0290	.0417	.0474
ASSEMBLY COST					.0006	.0314	.0303	.0623	.0895	.1017
ASM - SHOULDER BELT UPPER ANCHOR	183741	2	ASSY	.1069	.1102	.6752	.6244	1.4098	2.0259	2.3015
TUBE - ANCHOR	183742	1	STB	.1069	.0978	.0314	.0303	.1595	.2292	.2604
ASSEMBLY COST					.0124	.6438	.5941	1.2503	1.7967	2.0411
ASM - SHOULDER BELT LOWER ANCHOR	183751	2	ASSY	.0766	.0616	.6752	.6244	1.3612	1.9561	2.2222
TUBE - ANCHOR	183752	1	STB	.0766	.0492	.0314	.0303	.1109	.1594	.1811
ASSEMBLY COST					.0124	.6438	.5941	1.2503	1.7967	2.0411

COMPONENT NO	NAME	PRE		POST		TREND		POST/PRE		TREND/FRE		TREND/POST	
		PCS	\$	PCS	\$	\$	WEIGHT	\$	WEIGHT	\$	WEIGHT	\$	WEIGHT
01	ASM - FRONT S/BELT OUTBOARD ANCHOR	2	\$.66	2	\$.75	2	\$.48	2	\$.00	2	\$.18	2	\$.18
04	ASM - ANCHOR PLATE	2	\$.48	2	\$.75	2	\$.30	2	\$.00	2	\$.52	2	\$.52
02	PLATE	2	\$.30	2	\$.75	2	\$.23	2	\$.00	2	\$.52	2	\$.52
03	NUT	2	\$.70	2	\$.30	2	\$.12	2	\$.00	2	\$.18	2	\$.18
		2	\$.06	2	\$.70	2	\$.19	2	\$.00	2	\$.51	2	\$.51
		2	\$.05	2	\$.06	2	\$.06	2	\$.00	2	\$.00	2	\$.00
		2	\$.05	2	\$.05	2	\$.05	2	\$.00	2	\$.00	2	\$.00
11	ASM - FRONT S/BELT INBOARD ANCHOR	2	\$.49	2	\$.25	2	\$.48	2	\$.00	2	\$.01	2	\$.01
14	ASM - ANCHOR PLATE	2	\$.31	2	\$.25	2	\$.23	2	\$.00	2	\$.02	2	\$.02
12	PLATE	2	\$.13	2	\$.25	2	\$.30	2	\$.00	2	\$.01	2	\$.01
13	NUT	2	\$.20	2	\$.13	2	\$.12	2	\$.00	2	\$.02	2	\$.02
		2	\$.06	2	\$.20	2	\$.19	2	\$.00	2	\$.01	2	\$.01
		2	\$.05	2	\$.06	2	\$.06	2	\$.00	2	\$.00	2	\$.00
		2	\$.05	2	\$.05	2	\$.05	2	\$.00	2	\$.00	2	\$.00
41	ASM - SHOULDER BELT UPPER ANCHOR	2	\$ 2.82	2	\$.21	2	\$ 2.82	2	\$.00	2	\$ 2.82	2	\$ 2.82
42	PLATE	2	\$.32	2	\$.21	2	\$.32	2	\$.00	2	\$.21	2	\$.21
51	ASM - SHOULDER BELT LOWER ANCHOR	2	\$ 2.72	2	\$.15	2	\$ 2.72	2	\$.00	2	\$ 2.72	2	\$ 2.72
52	PLATE	2	\$.22	2	\$.15	2	\$.22	2	\$.00	2	\$.15	2	\$.15
		2	\$.15	2	\$.22	2	\$.15	2	\$.00	2	\$.22	2	\$.22
		2	\$.15	2	\$.15	2	\$.15	2	\$.00	2	\$.15	2	\$.15

MULTI PURPOSE VEHICLE

JEEP CJ JEEP CJ JEEP CJ

PRE POST TREND

1 [REDACTED] [REDACTED] [REDACTED]

11 [REDACTED] [REDACTED] [REDACTED]

21 [REDACTED] [REDACTED] [REDACTED]

31 [REDACTED] [REDACTED] [REDACTED]

41 [REDACTED] [REDACTED] [REDACTED]

51 [REDACTED] [REDACTED] [REDACTED]

DESCRIPTION	ITEM NO.	QTY	MATL	WEIGHT	MATERIAL	VARIABLE MANUFACTURING COST	TOTAL	WHOLESALE PRICE	CONSUMER PRICE	TOOLING	
DATSUN/NISSAN PICK-UP		1		3.0650	1.2322	1.1858	1.9630	4.3810	6.2948	7.1514	114.0
ASM - FRONT S/BELT OUTBOARD ANCHOR	74701	2	ASSY	.3960	.1594	.1446	.2392	.5332	.7662	.8704	13.0
ASM - FRONT S/BELT INBOARD ANCHOR	74711	2	ASSY	.3960	.1594	.1446	.2392	.5332	.7662	.8704	13.0
ASM - SHOULDER BELT UPPER ANCHOR	74741	2	ASSY	.4256	.1662	.1650	.3046	.6358	.9136	1.0380	18.0
ASM - FRONT S/BELT OUTBOARD ANCHOR	83701	2	ASSY	.2934	.1292	.1436	.2392	.5020	.7212	.8194	13.0
ASM - FRONT S/BELT INBOARD ANCHOR	83711	2	ASSY	.7720	.2572	.1596	.2904	.7072	1.0162	1.1544	18.0
ASM - REAR S/BELT OUTBOARD ANCHOR	83721	2	ASSY	.3050	.1324	.1436	.2392	.5052	.7258	.8246	13.0
ASM - SHOULDER BELT UPPER ANCHOR	83741	2	ASSY	.1720	.0960	.1412	.2220	.4592	.6598	.7496	13.0
ASM - REAR REAR S/BELT OUTBOARD AN	83771	2	ASSY	.3050	.1324	.1436	.2392	.5052	.7258	.8246	13.0
ASSEMBLY COST											

A-74

ASM - FRONT S/BELT OUTBOARD ANCHOR	74701	2	ASSY	.1980	.0797	.0723	.1146	.2666	.3831	.4352	13.0
ASM - ANCHOR PLATE	74704	1	ASSY	.1980	.0788	.0410	.0586	.1784	.2564	.2913	11.0
ASSEMBLY COST					.0009	.0313	.0560	.0882	.1267	.1439	2.0
ASM - ANCHOR PLATE	74704	2	ASSY	.1980	.0788	.0410	.0586	.1784	.2564	.2913	11.0
ANCHOR - OUTBOARD FRONT	74702	1	HRS	.1750	.0492	.0096	.0283	.0871	.1252	.1422	10.0
NUT	74703	1	HRS	.0230	.0290			.0290	.0417	.0474	
ASSEMBLY COST					.0006	.0314	.0303	.0623	.0895	.1017	1.0
ASM - FRONT S/BELT INBOARD ANCHOR	74711	2	ASSY	.1980	.0797	.0723	.1146	.2666	.3831	.4352	13.0
ASM - ANCHOR PLATE	74714	1	ASSY	.1980	.0788	.0410	.0586	.1784	.2564	.2913	11.0
ASSEMBLY COST					.0009	.0313	.0560	.0882	.1267	.1439	2.0
ASM - ANCHOR PLATE	74714	2	ASSY	.1980	.0788	.0410	.0586	.1784	.2564	.2913	11.0
ANCHOR - INBOARD FRONT	74712	1	HRS	.1750	.0492	.0096	.0283	.0871	.1252	.1422	10.0

VEHICLE- 21- DATSUN/NISSAN PICK-UP

DESCRIPTION	ITEM NO.	QTY	MATL	WEIGHT	MATERIAL	LABOR	BURDEN	TOTAL	WHOLESALE PRICE	CONSUMER PRICE	LOADING
NUT	174713	1	HRS	.0230	.0290			.0290	.0417	.0474	
ASSEMBLY COST					.0006	.0314	.0303	.0623	.0895	.1017	1.0
ASM - SHOULDER BELT UPPER ANCHOR	174741	2	ASSY	.2128	.0831	.0825	.1523	.3179	.4568	.5190	18.0
ASM - ANCHOR PLATE	174744	1	ASSY	.2128	.0822	.0512	.0963	.2297	.3301	.3751	16.0
ASSEMBLY COST					.0009	.0313	.0560	.0882	.1267	.1439	2.0
ASM - ANCHOR FLATE	174744	2	ASSY	.2128	.0822	.0512	.0963	.2297	.3301	.3751	16.0
ANCHOR - UPPER SHOULDER BELT	174742	1	HRS	.1898	.0526	.0198	.0660	.1384	.1989	.2260	15.0
NUT	174743	1	HRS	.0230	.0290			.0290	.0417	.0474	
ASSEMBLY COST					.0006	.0314	.0303	.0623	.0895	.1017	1.0
ASM - FRONT S/BELT OUTBOARD ANCHOR	183701	2	ASSY	.1467	.0646	.0718	.1146	.2510	.3606	.4097	13.0
ASM - ANCHOR FLATE	183704	1	ASSY	.1467	.0637	.0405	.0586	.1628	.2339	.2658	11.0
ASSEMBLY COST					.0009	.0313	.0560	.0882	.1267	.1439	2.0
ASM - ANCHOR FLATE	183704	2	ASSY	.1467	.0637	.0405	.0586	.1628	.2339	.2658	11.0
ANCHOR - OUTBOARD FRONT	183702	1	HRS	.1237	.0341	.0091	.0283	.0715	.1027	.1167	10.0
NUT	183703	1	STL	.0230	.0290			.0290	.0417	.0474	
ASSEMBLY COST					.0006	.0314	.0303	.0623	.0895	.1017	1.0
ASM - FRONT S/BELT INBOARD ANCHOR	183711	2	ASSY	.3860	.1286	.0798	.1452	.3536	.5081	.5772	18.0
ASM - ANCHOR FLATE	183714	1	ASSY	.3860	.1277	.0485	.0892	.2654	.3814	.4333	16.0
ASSEMBLY COST					.0009	.0313	.0560	.0882	.1267	.1439	2.0
ASM - ANCHOR PLATE	183714	2	ASSY	.3860	.1277	.0485	.0892	.2654	.3814	.4333	16.0
ANCHOR - INBOARD FRONT	183712	1	HRS	.3630	.0981	.0171	.0589	.1741	.2502	.2842	15.0
NUT	183713	1	STL	.0230	.0290			.0290	.0417	.0474	
ASSEMBLY COST					.0006	.0314	.0303	.0623	.0895	.1017	1.0

A-75

VEHICLE- 21- DATSUN/NISSAN PICK-UP

DESCRIPTION	ITEM NO.	QTY	MATL	WEIGHT	MATERIAL	LABOR	BURDEN	TOTAL	PRICE	FRIDE	TOOLING
ASM - REAR S/BELT OUTBOARD ANCHOR	183721	2	ASSY	.1525	.0662	.0718	.1146	.2526	.3629	.4123	13.0
ASM - ANCHOR FLATE	183724	1	ASSY	.1525	.0653	.0405	.0586	.1644	.2362	.2684	11.0
ASSEMBLY COST					.0009	.0313	.0560	.0882	.1267	.1439	2.0
ASM - ANCHOR FLATE	183724	2	ASSY	.1525	.0653	.0405	.0586	.1644	.2362	.2684	11.0
ANCHOR - OUTBOARD REAR	183722	1	HRS	.1295	.0357	.0091	.0283	.0731	.1050	.1193	10.0
NUT	183723	1	STL	.0230	.0290			.0290	.0417	.0474	
ASSEMBLY COST					.0006	.0314	.0303	.0623	.0895	.1017	1.0
ASM - SHOULDER BELT UPPER ANCHOR	183741	2	ASSY	.0860	.0480	.0706	.1110	.2296	.3299	.3748	13.0
ASM - ANCHOR FLATE	183744	1	ASSY	.0860	.0471	.0393	.0550	.1414	.2032	.2309	11.0
ANCHOR - UPPER	183742	1	HRS	.0630	.0175	.0079	.0247	.0501	.0720	.0818	10.0
NUT	183743	1	STL	.0230	.0290			.0290	.0417	.0474	
ASSEMBLY COST					.0006	.0314	.0303	.0623	.0895	.1017	1.0
ASM - REAR REAR S/BELT OUTBOARD ANCH	183771	2	ASSY	.1525	.0662	.0718	.1146	.2526	.3629	.4123	13.0
ASM - ANCHOR FLATE	183774	1	ASSY	.1525	.0653	.0405	.0586	.1644	.2362	.2684	11.0
ASSEMBLY COST					.0009	.0313	.0560	.0882	.1267	.1439	2.0
ASM - ANCHOR FLATE	183774	2	ASSY	.1525	.0653	.0405	.0586	.1644	.2362	.2684	11.0
ANCHOR - OUTBOARD REAR REAR	183772	1	HRS	.1295	.0357	.0091	.0283	.0731	.1050	.1193	10.0
NUT	183773	1	STL	.0230	.0290			.0290	.0417	.0474	
ASSEMBLY COST					.0006	.0314	.0303	.0623	.0895	.1017	1.0

COMPONENT NO	NAME	PRE			POST			TREND			POST/PRE			TREND/PRE			TREND/POST		
		PCS	WEIGHT	RQD	PCS	WEIGHT	RQD	\$ COST	WGT	WGT	\$ COST	WGT	\$ COST	WGT	\$ COST	WGT	\$ COST	WGT	
01	ASM - FRONT S/BELT OUTBOARD ANCHOR	2	\$.53	2	\$.40	2	\$.50	\$.53	\$.40	\$.50	\$.53	\$.50	\$.53	\$.40	\$.50	\$.53	\$.40	\$.50	
04	ASM - ANCHOR PLATE	2	\$.36	2	\$.40	2	\$.33	\$.36	\$.40	\$.33	\$.36	\$.33	\$.36	\$.40	\$.33	\$.36	\$.40	\$.33	
02	PLATE	2	\$.17	2	\$.35	2	\$.14	\$.17	\$.35	\$.14	\$.17	\$.14	\$.17	\$.35	\$.14	\$.17	\$.35	\$.14	
03	NUT	2	\$.06	2	\$.05	2	\$.06	\$.06	\$.05	\$.06	\$.06	\$.06	\$.06	\$.05	\$.06	\$.06	\$.05	\$.06	
11	ASM - FRONT S/BELT INBOARD ANCHOR	2	\$.53	2	\$.40	2	\$.71	\$.53	\$.40	\$.71	\$.53	\$.71	\$.53	\$.40	\$.71	\$.53	\$.40	\$.71	
14	ASM - ANCHOR PLATE	2	\$.36	2	\$.40	2	\$.53	\$.36	\$.40	\$.53	\$.36	\$.53	\$.36	\$.40	\$.53	\$.36	\$.40	\$.53	
12	PLATE	2	\$.17	2	\$.35	2	\$.35	\$.17	\$.35	\$.35	\$.17	\$.35	\$.35	\$.17	\$.35	\$.35	\$.17	\$.35	
13	NUT	2	\$.06	2	\$.05	2	\$.06	\$.06	\$.05	\$.06	\$.06	\$.06	\$.06	\$.05	\$.06	\$.06	\$.05	\$.06	
21	ASM - REAR S/BELT OUTBOARD ANCHOR	2	\$.51	2	\$.31	2	\$.51	\$.51	\$.31	\$.51	\$.51	\$.51	\$.51	\$.31	\$.51	\$.51	\$.31	\$.51	
24	ASM - ANCHOR PLATE	2	\$.33	2	\$.31	2	\$.33	\$.33	\$.31	\$.33	\$.33	\$.33	\$.33	\$.31	\$.33	\$.33	\$.31	\$.33	
22	PLATE	2	\$.15	2	\$.26	2	\$.15	\$.15	\$.26	\$.15	\$.15	\$.15	\$.15	\$.26	\$.15	\$.15	\$.26	\$.15	
23	NUT	2	\$.06	2	\$.05	2	\$.06	\$.06	\$.05	\$.06	\$.06	\$.06	\$.06	\$.05	\$.06	\$.06	\$.05	\$.06	
41	ASM - SHOULDER BELT UPPER ANCHOR	2	\$.64	2	\$.43	2	\$.46	\$.64	\$.43	\$.46	\$.64	\$.46	\$.64	\$.43	\$.46	\$.64	\$.43	\$.46	
44	ASM - ANCHOR PLATE	2	\$.46	2	\$.43	2	\$.28	\$.46	\$.43	\$.28	\$.46	\$.28	\$.46	\$.43	\$.28	\$.46	\$.43	\$.28	
42	PLATE	2	\$.28	2	\$.38	2	\$.10	\$.28	\$.38	\$.10	\$.28	\$.10	\$.28	\$.38	\$.10	\$.28	\$.38	\$.10	
43	NUT	2	\$.06	2	\$.05	2	\$.06	\$.06	\$.05	\$.06	\$.06	\$.06	\$.06	\$.05	\$.06	\$.06	\$.05	\$.06	
71	ASM - REAR REAR S/BELT OUTBOARD ANCHOR	2	\$.51	2	\$.31	2	\$.51	\$.51	\$.31	\$.51	\$.51	\$.51	\$.51	\$.31	\$.51	\$.51	\$.31	\$.51	
74	ASM - ANCHOR PLATE	2	\$.33	2	\$.31	2	\$.33	\$.33	\$.31	\$.33	\$.33	\$.33	\$.33	\$.31	\$.33	\$.33	\$.31	\$.33	
72	PLATE	2	\$.15	2	\$.26	2	\$.15	\$.15	\$.26	\$.15	\$.15	\$.15	\$.15	\$.26	\$.15	\$.15	\$.26	\$.15	
73	NUT	2	\$.06	2	\$.05	2	\$.06	\$.06	\$.05	\$.06	\$.06	\$.06	\$.06	\$.05	\$.06	\$.06	\$.05	\$.06	

DATSUN - NISSAN PICK - TRUCKS

PRE POST TREND

1



11



21



31

41



51

61

71



DESCRIPTION	ITEM NO.	QTY	MATL	WEIGHT	MATERIAL	LABOR	BURDEN	MANUFACTURING COST	TOTAL	PRICE	WHOLESALE CONSUMER PRICE
TOYOTA PICK-UP											
ASM - FRONT S/BELT OUTBOARD ANCHOR	73701	2	ASSY	1.1934	3754	1830	2846	1.2308	2.0572	5.8878	8.4604
ASM - FRONT S/BELT INBOARD ANCHOR	73711	2	ASSY	0.460	0598	0626	1120	0.2344	0.3368	0.3826	2.0
ASM - SHOULDER BELT UPPER ANCHOR	73741	2	ASSY	1.2036	3858	1898	3152	0.8908	1.2800	1.4542	36.0
ASM - FRONT S/BELT OUTBOARD ANCHOR	73701	2	ASSY	0.460	0598	0626	1120	0.2344	0.3368	0.3826	1.0
ASM - FRONT S/BELT INBOARD ANCHOR	73711	2	ASSY	4.0150	11750	3798	6314	2.1862	3.1416	3.5688	25.0
ASM - SHOULDER BELT UPPER ANCHOR	73741	2	ASSY	0.9146	3610	1836	3082	0.8528	1.2252	1.3918	36.0
ASM - SHOULDER BELT LOWER ANCHOR	73751	2	ASSY	0.4780	1830	1694	2938	0.6462	0.9286	1.0550	36.0
ASSEMBLY COST											
ASM - FRONT S/BELT OUTBOARD ANCHOR	73701	2	ASSY	0.5967	1877	0915	1423	0.4215	0.6057	0.6881	18.0
ASM - ANCHOR PLATE	73704	1	ASSY	0.5967	1868	0602	0863	0.3333	0.4790	0.5442	16.0
ASSEMBLY COST											
ASM - ANCHOR PLATE	73704	2	ASSY	0.5967	1868	0602	0863	0.3333	0.4790	0.5442	16.0
ANCHOR - OUTBOARD FRONT	73702	1	HRS	0.5737	1572	0288	0560	0.2420	0.3478	0.3951	15.0
NUT	73703	1	STL	0.0230	0290			0.0290	0.0417	0.0474	
ASSEMBLY COST											
ASM - FRONT S/BELT INBOARD ANCHOR	73711	2	ASSY	0.0230	0299	0313	0560	0.1172	0.1684	0.1913	2.0
NUT	73713	1	STL	0.0230	0290			0.0290	0.0417	0.0474	
ASSEMBLY COST											
ASM - SHOULDER BELT UPPER ANCHOR	73741	2	ASSY	0.6018	1929	0949	1576	0.4454	0.6400	0.7271	36.0
ASM - ANCHOR PLATE	73744	1	ASSY	0.6018	1920	0636	1016	0.3572	0.5133	0.5832	16.0
ASSEMBLY COST											
ASM - ANCHOR PLATE	73744	1	ASSY	0.6018	1920	0636	1016	0.3572	0.5133	0.5832	16.0
ASSEMBLY COST											

A-79

VEHICLE- 22- TOYOTA PICK-UP

DESCRIPTION	ITEM NO.	QTY	MATL	WEIGHT	MATERIAL	VARIABLE MANUFACTURING COST	LABOR	BURDEN	TOTAL	WHOLESALE PRICE	CONSUMER PRICE	TOOLING
ASM - ANCHOR PLATE	173744	2	ASSY	.6018	.1920	.0636	.1016	.3572	.5133	.5832	16.0	
ANCHOR - UPPER	173742	1	HRS	.5788	.1624	.0322	.0713	.2659	.3821	.4341	15.0	
NUT	173743	1	STL	.0230	.0290			.0290	.0417	.0474		
ASSEMBLY COST					.0006	.0314	.0303	.0623	.0895	.1017	1.0	
ASM - FRONT S/BELT OUTBOARD ANCHOR	183701	2	ASSY	.0230	.0299	.0313	.0560	.1172	.1684	.1913	1.0	
NUT	183703	1	STL	.0230	.0290			.0290	.0417	.0474		
ASSEMBLY COST					.0009	.0313	.0560	.0882	.1267	.1439	1.0	
ASM - FRONT S/BELT INBOARD ANCHOR	183711	2	ASSY	2.0075	.5875	.1899	.3157	1.0931	1.5708	1.7844	25.0	
ASM - ANCHOR PLATE	183714	1	ASSY	2.0075	.5862	.1429	.2333	.9624	1.3830	1.5711	22.0	
ASSEMBLY COST					.0013	.0470	.0824	.1307	.1878	.2133	3.0	
ASM - ANCHOR PLATE	183714	2	ASSY	2.0075	.5862	.1429	.2333	.9624	1.3830	1.5711	22.0	
ANCHOR - INBOARD FRONT	183712	1	HRS	1.9845	.5563	.0958	.1887	.8408	1.2082	1.3725	20.0	
NUT	183713	1	STL	.0230	.0290			.0290	.0417	.0474		
ASSEMBLY COST					.0009	.0471	.0446	.0926	.1331	.1512	2.0	
ASM - SHOULDER BELT UPPER ANCHOR	183741	2	ASSY	.4573	.1805	.0918	.1541	.4264	.6126	.6959	36.0	
ASM - ANCHOR FLATE	183744	1	ASSY	.4573	.1796	.0605	.0981	.3382	.4859	.5520	16.0	
ASSEMBLY COST					.0009	.0313	.0560	.0882	.1267	.1439	20.0	
ASM - ANCHOR PLATE	183744	2	ASSY	.4573	.1796	.0605	.0981	.3382	.4859	.5520	16.0	
ANCHOR - UPPER	183742	1	HRS	.4320	.1540	.0291	.0678	.2509	.3605	.4095	15.0	
NUT	183743	1	STL	.0253	.0250			.0250	.0359	.0408		
ASSEMBLY COST					.0006	.0314	.0303	.0623	.0895	.1017	1.0	
ASM - SHOULDER BELT LOWER ANCHOR	183751	2	ASSY	.2390	.0915	.0847	.1469	.3231	.4643	.5275	36.0	
ASM - ANCHOR PLATE	183754	1	ASSY	.2390	.0906	.0534	.0909	.2349	.3376	.3836	16.0	
ASSEMBLY COST					.0009	.0313	.0560	.0882	.1267	.1439	20.0	

.00091 .03131 .05601 .08921 .12671 .14391 20.0
 .38361 12.0

VEHICLE- 22- TOYOTA PICK-UP

DESCRIPTION	ITEM NO.	QTY	MATERIAL	WEIGHT	VARIABLE MANUFACTURING COST		WHOLESALE CONSUMER TOOLING				
					MATERIAL	LABOR	TOTAL	PRICE	PRICE		
ASM - ANCHOR PLATE	183754	1	21ASSY	.2390	.0906	.0534	.0909	.2349	.3376	.3836	16.0
ANCHOR - LOWER	183752	1	11HRS	.2160	.0610	.0220	.0606	.1436	.2064	.2345	15.0
NUT	183753	1	11STL	.0230	.0290			.0290	.0417	.0474	
ASSEMBLY COST					.0006	.0314	.0303	.0623	.0895	.1017	1.0

COMPONENT NO. NAME	FRE		POST		TREND		POST/FRE		TREND/FRE		TREND/POST	
	FCS RQD	\$ WEIGHT	FCS RQD	\$ WEIGHT	\$ WEIGHT	FCS RQD	\$ WEIGHT	\$ WEIGHT	\$ WEIGHT	\$ WEIGHT	\$ WEIGHT	\$ WEIGHT
01 ASM - FRONT S/BELT OUTBOARD ANCHOR	2	\$.84	2	\$.23	2	\$.84	2	\$.23	2	\$.23	2	\$.61
04 ASM - ANCHOR PLATE	2	\$ 1.19	2	\$.67	2	\$ 1.19	2	\$.67	2	\$.05	2	\$ 1.14
02 PLATE	2	\$ 1.19	2	\$.48	2	\$ 1.19	2	\$.48	2	\$.05	2	\$ 1.19
03 NUT	2	\$ 1.15	2	\$.06	2	\$ 1.15	2	\$.06	2	\$.06	2	\$ 1.15
11 ASM - FRONT S/BELT INBOARD ANCHOR	2	\$.23	2	\$.23	2	\$.23	2	\$.23	2	\$.23	2	\$ 1.96
14 ASM - ANCHOR PLATE	2	\$ 1.92	2	\$ 4.02	2	\$ 1.92	2	\$ 4.02	2	\$ 4.02	2	\$ 3.97
12 PLATE	2	\$ 1.68	2	\$ 3.97	2	\$ 1.68	2	\$ 3.97	2	\$ 4.02	2	\$ 4.02
13 NUT	2	\$.06	2	\$.06	2	\$.06	2	\$.06	2	\$ 1.68	2	\$ 1.68
41 ASM - SHOULDER BELT UPPER ANCHOR	2	\$.89	2	\$.85	2	\$.89	2	\$.85	2	\$.85	2	\$.04
44 ASM - ANCHOR PLATE	2	\$ 1.20	2	\$.68	2	\$ 1.20	2	\$.71	2	\$.91	2	\$.29
42 PLATE	2	\$ 1.53	2	\$.50	2	\$ 1.20	2	\$.91	2	\$.68	2	\$.03
43 NUT	2	\$ 1.16	2	\$.86	2	\$ 1.16	2	\$.53	2	\$.50	2	\$.03
51 ASM - SHOULDER BELT LOWER ANCHOR	2	\$.06	2	\$.05	2	\$.06	2	\$.05	2	\$.86	2	\$.30
54 ASM - ANCHOR PLATE	2	\$.65	2	\$.48	2	\$.65	2	\$.48	2	\$.05	2	\$.01
52 PLATE	2	\$.47	2	\$.48	2	\$.47	2	\$.48	2	\$.05	2	\$.05
53 NUT	2	\$.43	2	\$.43	2	\$.43	2	\$.43	2	\$.43	2	\$.43

TOYOTA PICK UP TRUCKS

PRE POST TREND

1



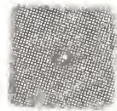
11



21

31

41



51





TL 242 .083 V

Osen, William

Cost evaluation
Motor Vehicle

Form DOT F 172
FORMERLY FORM D

DOT LIBRARY



00092508