

What Is the National ITS Architecture?

The transportation systems that we are planning and designing today incorporate sophisticated information systems designed to improve traffic safety and efficiency. These systems reflect local needs and are built and operated by individual States or local agencies and their contractors. How can we ensure that these systems will smoothly integrate not only with each other, but also with existing systems, and that they will operate consistently across the country?

The answer is the *National ITS Architecture*, which provides a master plan for developing and deploying *ITS* technologies and systems. It sets forth boundaries, responsibilities, and strategies for managing the vast amounts of information needed for *ITS*.

For more information on the *National ITS Architecture*, go online to www.its.dot.gov.



An Interactive Software Tool -
for Regional and Project
Architecture Development

Turbo Architecture is available from the
McTrans Center at the University of Florida.

For further information:

TEL: 352-392-0378

FAX: 352-392-3224

EMAIL: mctrans@ce.ufl.edu



EDL #12703

New ITS Planning Tool



An Interactive Software Tool -
for Regional and Project
Architecture Development



Maximizes integration

Facilitates future expansion

Saves money, time,
and effort

Turbo Architecture is a new, easy-to-use tool that simplifies use of the database and takes the guesswork out of planning and integrating intelligent transportation systems.



Turbo Architecture provides two options for entering information that will be used to create an inventory of services:

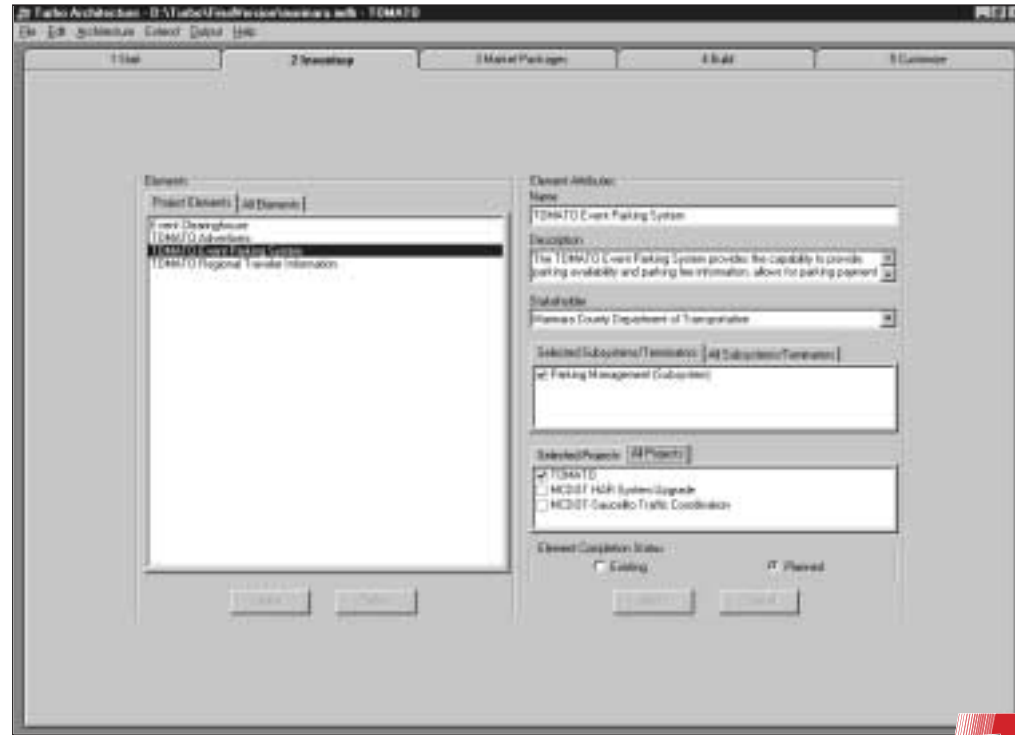
- ◆ Respond to a series of questions (interview process), or
- ◆ Fill in forms.

Once the information is entered, you then customize the architecture to accommodate local needs, services, and systems and eventually output multiple reports and diagrams.

Turbo Architecture allows you to:

- ◆ Create a regional architecture
- ◆ Create an architecture for a single ITS project when no regional architecture exists
- ◆ Create a project architecture from an existing regional architecture
- ◆ Add a previously defined project architecture to an existing regional architecture

By helping you integrate multiple project architectures with each other and with a regional architecture, *Turbo Architecture* makes it easier to develop an architecture that is consistent with the *National ITS Architecture*.



Who Should Use This Tool?

If you are a transportation professional involved in developing regional or project architectures and have a basic working knowledge of the *National ITS Architecture*, then *Turbo Architecture* is for you.

Computer Requirements

Turbo Architecture runs on personal computers with at least a 100 MHz Pentium processor and operating under Windows 95/98/NT. It requires 80 MB of hard disk space, a monitor with a minimum resolution of 800X600, 32 MB of RAM, and a CD-ROM drive.



Turbo Architecture is a stand-alone software program, but the data files generated by the program can be imported into Microsoft Access 97 for further manipulation.

The program comes bundled with an installation guide, a user's manual, and online help screens.

How To Order

Turbo Architecture, which was developed under a Federal Highway Administration contract, is expected to be available in spring 2000 from McTrans (Center for Microcomputers in Transportation) at the University of Florida (www.mctrans.ce.ufl.edu/catalog).