

Connected Commercial Vehicles— Integrated Truck Project

Applications Requirements Final Technical Report

www.its.dot.gov/index.htm

Final Technical Report — January 31, 2014

FHWA-JPO-13-106



U.S. Department of Transportation
Research and Innovative Technology
Administration

Produced by Connected Commercial Vehicle Integrated Truck Project
ITS Joint Program Office
Research and Innovative Technology Administration
Federal Highway Administration
Federal Motor Carrier Safety Administration
National Highway Traffic Safety Administration
U.S. Department of Transportation

Notice

This document is disseminated under the sponsorship of the Department of Transportation in the interest of information exchange. The United States Government assumes no liability for its contents or use thereof.

The U.S. Government is not endorsing any manufacturers, products, or services cited herein and any trade name that may appear in the work has been included only because it is essential to the contents of the work.

1. Report No. FHWA-JPO-13-106		2. Government Accession No.		3. Recipient's Catalog No.	
4. Title and Subtitle Connected Commercial Vehicles—Integrated Truck Project Applications Requirements Final Technical Report				5. Report Date January 31, 2014	
				6. Performing Organization Code 100003838	
7. Author(s) Gordon Peredo, MBRDNA				8. Performing Organization Report No. 100003838-401	
9. Performing Organization Name And Address Mercedes-Benz Research & Development North America, Inc. (MBRDNA) 309 North Pastoria Ave Sunnyvale, CA 94085				10. Work Unit No. (TRAIS)	
				11. Contract or Grant No. DTFH61-06-D0007/ ORDER T11004/WO BA07-092	
12. Sponsoring Agency Name and Address Federal Highway Administration 1200 New Jersey Avenue, S.E. Washington, DC 20590				13. Type of Report and Period Covered Task Report 9/1/2011-1/31/2014	
				14. Sponsoring Agency Code	
15. Supplementary Notes This work was conducted by Mercedes Benz Research & Development of North America (MBRDNA), Sunnyvale, CA. The Connected Commercial Vehicle Team is led and managed by Battelle and includes MBRDNA, the University of Michigan Transportation Institute (UMTRI), DENSO International America, Inc.—North America Research and Development, California Office, Daimler Trucks North America (DTNA), and Meritor WABCO..					
16. Abstract Connected vehicle wireless data communications can enable safety applications that may reduce crashes, injuries, and fatalities suffered on our roads and highways, as well as enabling reductions in traffic congestion and effects on the environment. As a critical part of achieving these goals, the USDOT contracted with a Team led by Battelle to integrate and validate connected vehicle on-board equipment (OBE) and safety applications on selected Class 8 commercial vehicles and to support those vehicles in research and testing activities that provide information and data needed to assess their safety benefits and support regulatory decision processes. This document describes application requirements for CCV-IT specific safety applications, including Forward Collision Warning (FCW), Intersection Movement Assist (IMA), Blind Spot Warning / Lane Change Warning (BSW/LCW), Emergency Electronic Brake Lights (EEBL), and Curve Speed Warning (CSW). It also describes key software modules, application scenarios, and basic assumptions.					
17. Key Words Commercial vehicle, connected vehicle, dedicated short-range communication, vehicle integration			18. Distribution Statement Distribution Unlimited		
19. Security Classif. (of this report) Unclassified		20. Security Classif. (of this page) Unclassified		21. No. of Pages 33	22. Price

Table of Contents

Table of Contents	i
Executive Summary	iii
Chapter 1 Introduction	1
Chapter 2 Safety Applications	2
APPLICATIONS.....	2
FCW.....	2
IMA.....	2
BSW/LCW.....	2
EEBL.....	2
CSW.....	2
SOFTWARE ARCHITECTURE.....	3
Supporting Modules.....	3
Chapter 3 Application Requirements	6
FORWARD COLLISION WARNING (FCW).....	6
Scenario.....	6
Design Assumptions.....	6
Application Requirements.....	6
Inputs.....	7
Outputs.....	8
INTERSECTION MOVEMENT ASSIST (IMA).....	8
Scenario.....	8
Design Assumptions.....	10
Application Requirements.....	10
Inputs.....	12
Outputs.....	12
BLIND SPOT WARNING / LANE CHANGE WARNING (BSW/LCW).....	13
Scenario.....	13
Design Assumptions.....	13
Application Requirements.....	13
Inputs.....	15
Outputs.....	15
EMERGENCY ELECTRONIC BRAKE LIGHTS (EEBL).....	16
Scenario.....	16
Design Assumptions.....	17
Application Requirements.....	17
Inputs.....	19
Outputs.....	19

CURVE SPEED WARNING (CSW).....20
 Scenario.....20
 Design Assumptions20
 CSW Interface within System Architecture21
 Application Requirements.....21
 Inputs23
 Outputs24

List of Appendices

APPENDIX A. WSU Configuration Parameters for Connected Commercial
 Vehicles..... A-1

List of Figures

Figure 2-1. Software Architecture3
Figure 2-2. Illustration of TC Location Zone Definition4
Figure 2-3. Illustration of Relative Distance Defined in TC.....5
Figure 3-1. Illustration of the FCW Scenario.....6
Figure 3-2. Illustration of IMA Scenario 1.....9
Figure 3-3. Illustration of IMA Scenario 2.....10
Figure 3-4. Illustration of BSW/LCW Scenario13
Figure 3-5. Illustration of EEBL Scenario.....16
Figure 3-6. Illustration of the CSW Scenario.....20
Figure 3-7. CSW Functional Context Diagram.....21

Executive Summary

This document describes the Applications Requirements of the Connected Commercial Vehicles. It is a deliverable under Task 4 of the Connected Commercial Vehicles—Integrated Truck (CCV-IT) Project..

This document describes application requirements for CCV-IT-specific safety applications, including Forward Collision Warning (FCW), Intersection Movement Assist (IMA), Blind Spot Warning / Lane Change Warning (BSW/LCW), Emergency Electronic Brake Lights (EEBL), and Curve Speed Warning (CSW). It also describes key software modules, application scenarios, and basic assumptions.

The software architecture includes the ability to add applications in the future, including applications that use information from the vehicle's data-bus, exchange information with infrastructure applications, or other connected vehicles via the 5.9 GHz Dedicated Short Range Communication (DSRC) radio.

Chapter 1 Introduction

The safety application development portion of the CCV-IT project is structured largely as an adaptation of a preexisting system developed over multiple projects for Light Vehicles (LV). System development was initiated in 2006 by the Crash Avoidance Metrics Partnership (CAMP) Vehicle Safety Communications 2 (VSC2) Consortium (Ford Motor Company, General Motors Corporation, Honda R&D Americas, Inc., Mercedes-Benz Research and Development North America, Inc., and Toyota Motor Engineering & Manufacturing North America, Inc.) for the U.S. Department of Transportation (USDOT) Cooperative Intersection Collision Avoidance System Limited to Stop Sign and Traffic Signal Violations (CICAS-V) project. Development continued in the Vehicle Safety Communications – Applications (VSC-A) project based on the platform used for the CICAS-V project. The platform is again being used and modified for vehicle safety communications research in the Vehicle-to-Vehicle – Safety Pilot (V2V-SP) project.

Due to the nature of this project and its foundation in technology from earlier projects, this document focuses on the new or modified areas of the platform expressly developed for the CCV-IT project. Detailed information on the baseline platform and safety applications specifications and designs can be found in USDOT documentation from the above referenced projects, especially those from the VSC-A project. Only CSW is an entirely new safety application, not previously developed by CAMP, but still based on the same software architecture and core modules originating in the above projects. Also, since CSW application development requires a stable definition of the Traveler Information Message (TIM) structure and content supplied by the Roadside Equipment, firm requirements as well as design will depend, in part, on the availability of stable message content and structure. In the absence of a stable TIM, the CCV-IT applications team may opt to develop and implement its own TIM functionality in order to prove the CSW application and potentially provide guidance to the TIM standardization process.

Chapter 2 Safety Applications

Applications

FCW

Forward Collision Warning is a vehicle-to-vehicle (V2V) communications based safety feature that issues a warning to the driver of a vehicle in case of an impending rear-end collision with a vehicle ahead in the same lane and direction of travel. The vehicle can be moving or stopped. FCW will help drivers in avoiding or mitigating rear-end vehicle collisions in the forward path of travel.

IMA

Intersection Movement Assist is a V2V communications based safety feature that warns the vehicle driver when it is not safe to enter an intersection due to high probability of collision with other vehicles approaching the intersection from crossing paths. IMA is primarily intended to help drivers avoid or mitigate vehicle collisions at stop sign controlled and uncontrolled intersections.

BSW/LCW

Blind Spot Warning / Lane Change Warning is a V2V communications based safety feature that warns the vehicle driver if the blind spot zone into which the driver intends to move is, or will soon be occupied by another vehicle traveling in the same direction during a lane change attempt. Moreover, the application provides advisory information to the driver whenever a vehicle in an adjacent lane is positioned in their blind spot. A lane change attempt is recognized by the driver's use of the turn signal.

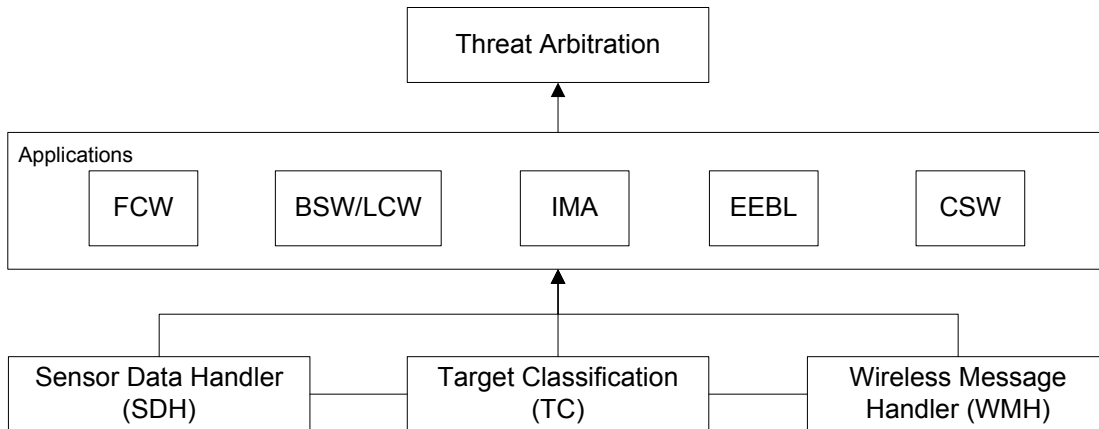
EEBL

Emergency Electronic Brake Lights is a V2V communications based safety feature that informs or warns a following vehicle's driver if a leading vehicle is engaging their brakes above a predetermined threshold. Upon receiving braking information from the leading vehicle, the following vehicle determines the relevance and severity of the event and provides an advisory or warning to the driver, if appropriate. This application is particularly useful when the driver's line of sight is obstructed by other vehicles or in bad weather conditions (e.g. fog, heavy rain).

CSW

Curve Speed Warning is a vehicle-to-infrastructure (V2I) communications based safety feature that informs or warns the driver if the vehicle is in danger of exceeding the recommended speed for an upcoming curve. The vehicle receives curve information from roadside equipment (e.g. recommended speed, curve start, end, and direction), determines if the curve is relevant, and provides an advisory or warning to the driver, if appropriate.

Software Architecture



MBRDNA

Figure 2-1. Software Architecture

Supporting Modules

Sensor Data Handler (SDH)

Sensor Data Handler is a module that monitors the status of the host vehicle (HV). It provides the following information:

- Host vehicle speed
- Host vehicle current gear
- Timestamp of the current GPS reading
- Host vehicle brake status
- Host vehicle length
- Longitudinal acceleration

Wireless Message Handler (WMH)

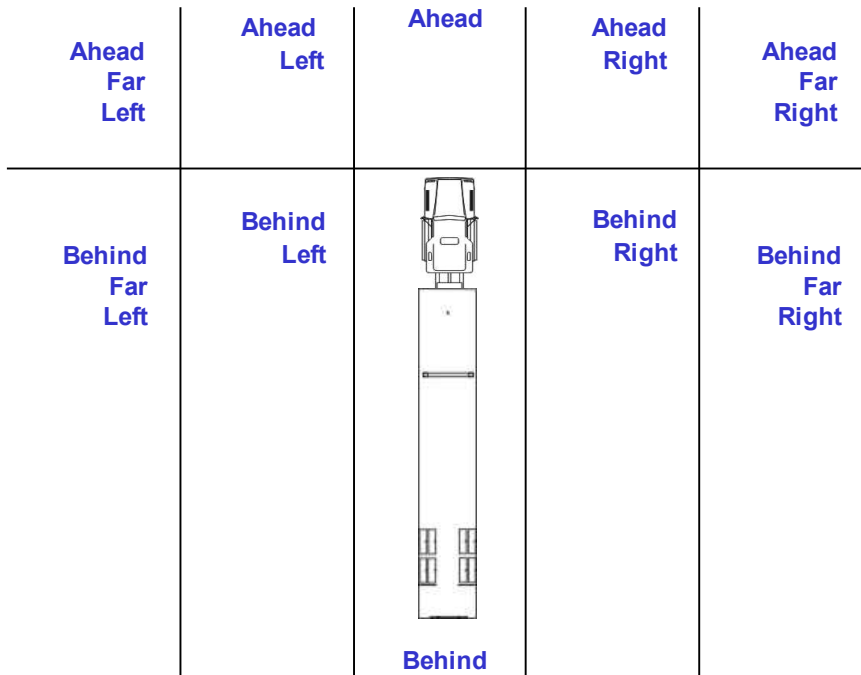
Wireless Message Handler is a module that communicates with remote (neighboring) vehicles (RV) and infrastructure. From over the air messages, WMH can provide the following information about each remote vehicle to the host vehicle:

- Remote vehicle ID
- Remote vehicle speed
- Remote vehicle position
- Remote vehicle longitudinal acceleration
- Remote vehicle brake status

Target Classification (TC)

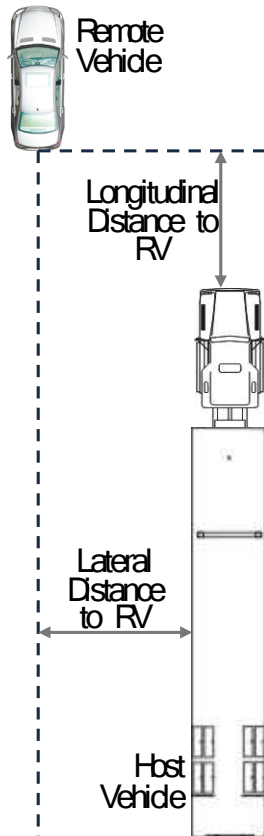
Target Classification (TC) is a module that classifies the locations of remote vehicles relative to the host vehicle. For each of the remote communicating vehicles, TC would provide the following information relative to the local host vehicle:

- Location of a remote vehicle, classified into zones shown in Figure 2-2
- Range and heading of a remote vehicle
- Relative speed of a remote vehicle
- Relative longitudinal and lateral distance, as illustrated by Figure 2-3
- Confidence level of target tracking



MBRDNA

Figure 2-2. Illustration of TC Location Zone Definition



MBRDNA

Figure 2-3. Illustration of Relative Distance Defined in TC

Threat Arbitration (TA)

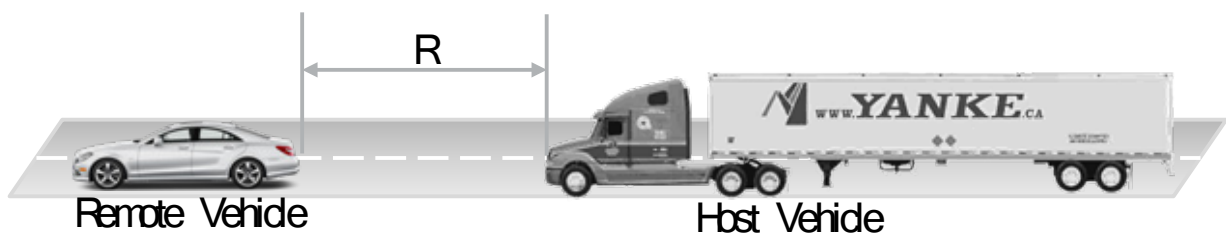
The Threat Arbitration (TA) module arbitrates between all safety applications warning requests to resolve driver notification conflicts should they occur. In order to ensure the most important warning request is sent to the driver, this module uses threat level, relative speed, location of threat, and other information from each safety module to assess relative severity. It then determines the highest priority warning request and triggers notification of this warning to the driver.

Chapter 3 Application Requirements

Forward Collision Warning (FCW)

Scenario

FCW shall inform or warn the HV driver if an ahead (same lane, same direction) RV is moving slower than the HV or is stopped.



MBRDNA

Figure 3-1. Illustration of the FCW Scenario

Design Assumptions

- FCW logic flow will be executed either periodically or when a new vehicle is detected by the Target Classification (TC) module.
- Only remote vehicles identified as AHEAD by the TC module will be processed by the FCW application.

Application Requirements

User Requirements

- FCW shall be capable of being turned On or Off.
- FCW shall provide warning information to the driver only when the speed of the host vehicle is at least above a configurable threshold.
- FCW shall warn the driver of the host vehicle when there is imminent danger of a rear-end collision with a remote lead vehicle in its lane of travel.
- When the FCW warning is determined, it shall persist for a configurable duration.
- FCW shall suppress a warning if the host vehicle is applying sufficient brake at the time the warning would normally be issued.
- FCW shall be capable of providing multi-stage warnings to indicate cautionary and imminent threat levels.

Functional Requirements

1. FCW shall transition between one of the following FCW states:
 - DISABLED: The FCW feature is disabled
 - ENABLED: The FCW feature is enabled
 - ENGAGED: The FCW feature is engaged
 - FAILED: The FCW feature is unavailable because of one or more failures/faults in the system.
2. FCW shall enter the ENABLED state by default when the System Power is switched On. FCW shall reset to the ENABLED state following all power cycles.
3. FCW shall transition from ENABLED to ENGAGED if the following conditions are valid:
 - Host vehicle speed is above the configured threshold speed
 - Host vehicle is moving in the forward direction
4. When FCW is ENGAGED, FCW shall periodically process inputs from the following subsystems: Target Classification, Sensor Data Handler, and Wireless Message Handler.
 - FCW shall select all remote target vehicles classified as AHEAD in lane by the Target Classification module with longitudinal range less than a configurable threshold.
 - FCW shall process all selected remote target vehicles and evaluate the threat level for each one.
5. Threat level shall be assigned an integer value between 0 and 100.
6. FCW shall select the remote target vehicle with the highest threat level and output the information to the Threat Arbitration module.
7. FCW warning state should be assigned as one of the following:
 - NONE
 - DETECTED
 - INFORM
 - WARN
8. When the FCW warning state is INFORM or WARN, it shall remain in that state for a defined minimum duration.
9. The FCW warning state shall be reset to NONE following detection that the host vehicle has brakes active. The driver is assumed to be aware of the situation and is preparing to take action.
10. FCW shall completely process the assessment within a defined latency from the reception of incoming messages in the Wireless Message Handler.

Inputs

FCW receives updates from the Target Classification, Sensor Data Handler, and Wireless Message Handler modules every 100 ms.

Outputs

- FCW shall send at least the following information to the Threat Arbitration module:
- FCW application state
- Current FCW warning state
- In case a threat from a remote vehicle is detected, the following remote vehicle information shall be included:
 - Vehicle Identifier
 - Relative location of the remote vehicle
 - Longitudinal Offset
 - Relative Speed
 - Associated FCW threat level

Intersection Movement Assist (IMA)

Scenario

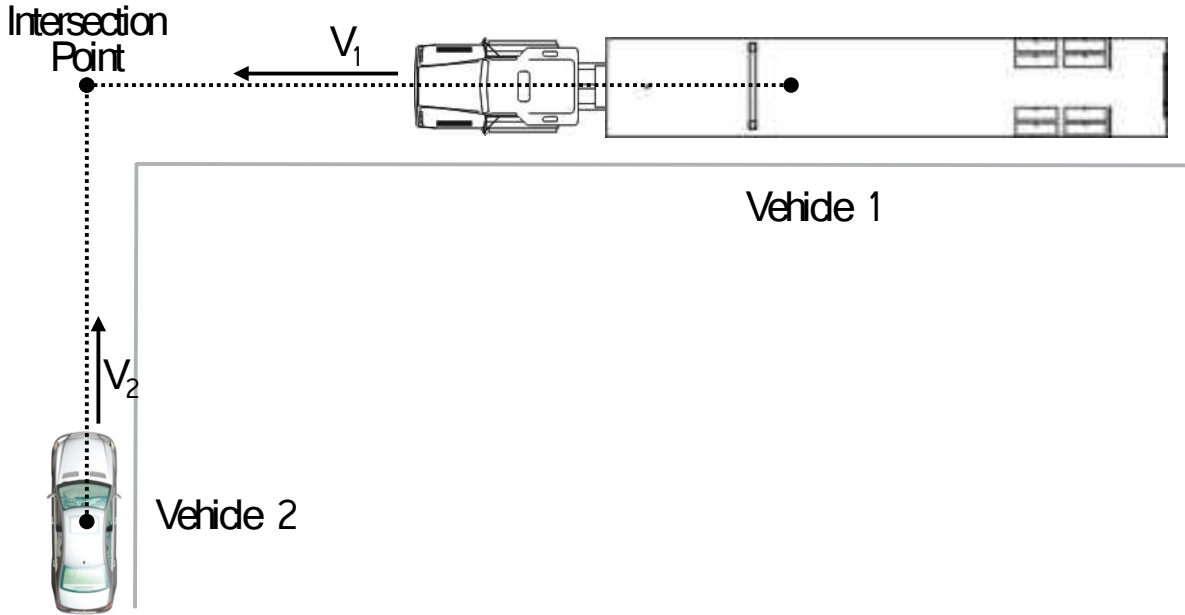
IMA's scope shall be limited to the following two scenarios.

Scenario 1: Two Vehicles Approaching an Intersection

In this scenario two vehicles whose paths are roughly perpendicular are approaching the intersection point. This is commonly seen at uncontrolled intersections. This scenario is distinguished from Scenario 2 in that both vehicles here are traveling above a configurable threshold speed and neither vehicle has its brake applied.

In this scenario the driver is informed if the Host Vehicle is some distance away from the intersection point.

A warning is issued if the Host Vehicle is within the critical stopping distance from the intersection point.



MBRDNA

Figure 3-2. Illustration of IMA Scenario 1: both vehicles are in motion

Scenario 2: Two-Way Stop

In this scenario one vehicle is attempting to cross or merge into a perpendicular route. This may be seen at any road intersection containing only two stop signs, where parking lots lead onto regular roads, and where rural highways intersect with other roads.

At the beginning (in time) of this scenario one vehicle will be stopped with its brake applied. A second vehicle is traveling on a route perpendicular to the first vehicle's heading, possibly posing a collision threat should the first vehicle creep forward.

In this scenario the warnings and informs issued to the drivers of each vehicle will be different. This Scenario is broken down into two phases: Vehicle 1 with its brake applied and Vehicle 1 with its brake not applied with very minimal speed (creeping forward).

Phase 1: Vehicle 1 Braking

In this phase Vehicle 1 has its brake applied. This is the distinguishing characteristic between Phase 1 and Phase 2 for Scenario 2.

Vehicle 1 shall receive an inform if Vehicle 2 is within range of posing a collision threat.

Vehicle 2 shall not receive either a warning or an inform from IMA at any time during this phase.

Phase 2: Vehicle 1 Creeping Forward

In this phase Vehicle 1 is no longer applying its brake and begins creeping forward (assuming an automatic transmission). Vehicle 1 remains at very low speed. At this time it is impossible to determine if the driver of Vehicle 1 is attempting to creep forward to see around sight-blocking vehicles, or if the driver is preparing to apply the gas to progress forward either across the intersection or to turn and merge into traffic on the intersecting road.

Vehicle 1 shall receive a warning (and only a warning) during this phase if Vehicle 2 is within range of posing a collision threat (within the critical stopping distance). No inform will be issued during this phase to Vehicle 1 by IMA.

Vehicle 2 shall now receive an inform if it is within a preset multiplier of the critical stopping distance. No warning is issued in this phase to Vehicle 2 by IMA.

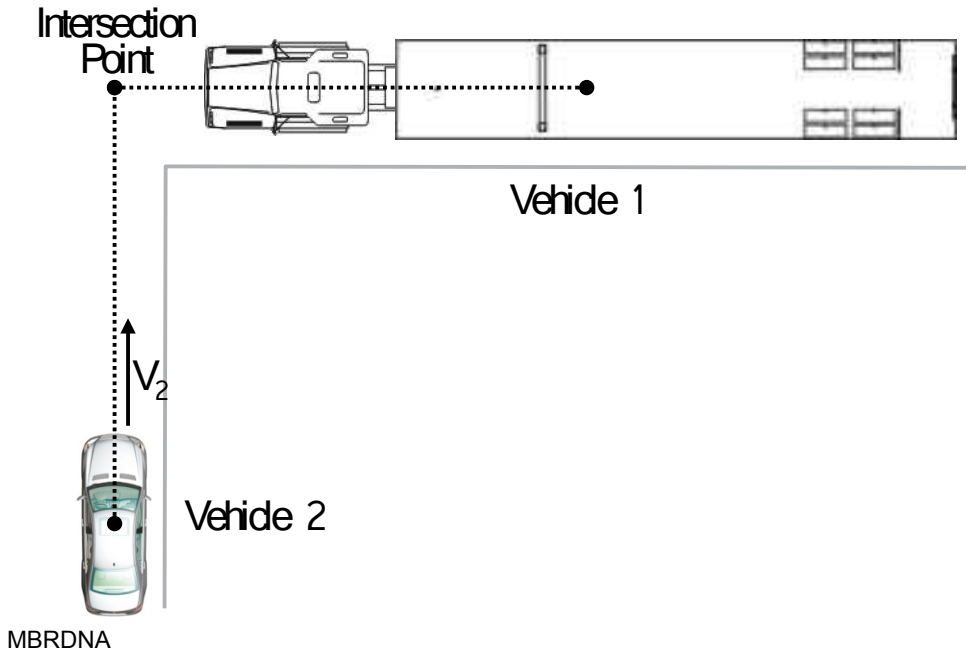


Figure 3-3. Illustration of IMA Scenario 2: Truck is stopped.

Design Assumptions

- IMA logic flow will be executed when a new object is detected by the Target Classification module.
- Only remote vehicles identified as LEFT or RIGHT by the TC module will be processed.

Application Requirements

User Requirements

- IMA shall be capable of being turned ON or OFF.
- IMA shall be capable of computing threat level for all RVs classified as either intersecting from left or right if they are within a defined range.
- IMA shall assign multi-stage warning levels to each RV commensurate with their threat level.
- IMA shall provide warning information to Threat Arbitration about the highest threat RV intersecting from left (if any) and the highest threat RV intersecting from right (if any).

- When the IMA warning is determined, it shall persist for a configurable duration and continue as long as no corrective action is taken that sufficiently avoids the collision danger.
- IMA shall suppress a warning if the HV and/or RV driver is reducing speed or changing path to avoid collision.

Functional Requirements

1. IMA shall transition between one of the following IMA states:
 - DISABLED: The IMA feature is disabled
 - ENABLED: The IMA feature is enabled
 - ENGAGED: The IMA feature is engaged
 - FAILED: The IMA feature is unavailable because of one or more failures/faults in the system.
2. IMA shall enter the ENABLED state by default when the System Power is switched ON and the host vehicle's gear is not in Park.
3. IMA shall transition from ENABLED to ENGAGED if there are any RVs reported by TC as either intersecting left or right within a defined range.
4. When IMA is ENABLED, IMA shall periodically process inputs from the Target Classification, Sensor Data Handler, and Wireless Message Handler modules every 100 ms. IMA shall determine if a collision is imminent based on the remote vehicles detected by Target Classification and by monitoring its own brake status, longitudinal acceleration, speed, and heading.
5. IMA shall have four stages of warning: NONE, DETECTED, INFORM, and WARN.
6. IMA shall ignore all RVs when both RV and HV are traveling at a speed below a minimal speed threshold.
7. IMA shall report a DETECTED status for each TC target location (intersecting right and intersecting left) for which TC reports active RVs within a preset maximum range. Any reporting of an Inform or Warn threat level for either location shall supersede the DETECTED status.
8. (Warn Conditions) While IMA is in the ENGAGED state, IMA shall set a WARN threat level for all RVs classified as intersecting left or intersecting right if any of the following are true:
 - (Scenario 1 (Symmetric)) If both the HV and RV are traveling at a speed at or above a minimal speed threshold and will be arriving at the intersection point at roughly the same time and also the HV is within critical stopping distance.
 - (Scenario 2 Phase 2 Vehicle 1) If the HV is traveling below a minimal speed threshold but the RV is traveling at a speed above the minimal speed threshold and the HV does not have its brakes applied and the HV is within critical stopping distance.
9. A WARN report to Threat Arbitration shall be suppressed if the HV changes course to avoid a collision (difference between HV time to intersection and RV time to intersection exceeds the time a vehicle need to cross the intersection) at the time the warning would normally be issued.

- 10.** (Inform Conditions) While IMA is in the ENGAGED state, IMA shall set an INFORM threat level for all RVs classified as intersecting left or intersecting right if any of the following are true:
- (Scenario 1 Symmetric) If both the HV and RV are traveling at a speed at or above a minimal speed threshold and will be arriving at the intersection point at roughly the same time and the HV is not yet at the critical stopping distance.
 - (Scenario 2 Phase 1 Vehicle 1) The HV is traveling at a speed below a minimal speed threshold together with its brake applied, the HV is within a preset distance to intersection, the RV is traveling above a minimum speed threshold, and the RV is within a preset multiplier of the critical stopping distance for the RV's current speed.
 - (Scenario 2 Phase 2 Vehicle 2) The HV is traveling at or above a minimum speed threshold, the RV is traveling below a minimum speed threshold, the RV does not have its brake applied, the RV is within a preset distance to the intersection, and the HV is within a preset multiplier of its critical stopping distance.
- 11.** IMA shall indicate from which direction an RV is predicted to impact the HV by setting the threat location appropriately to LEFT or RIGHT.
- 12.** IMA threat level shall be assigned an integer value between 0 and 100.
- 13.** IMA will assign a threat level for each processed RV. The RV with the highest threat level will be passed to the Threat Arbitration module.

Special Terms

1. "Critical Stopping Distance" is the distance to stop for the vehicle under consideration.
2. "Distance To Intersection" is the distance provided by TC and is computed by subtracting half of the respective vehicle's Length from the distance to intersection.

Inputs

IMA receives updates from the Target Classification, Sensor Data Handler, and Wireless Data Handler modules every 100ms.

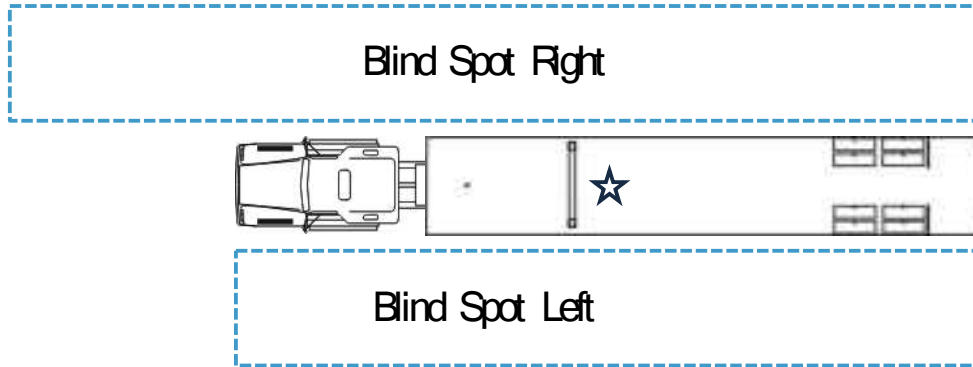
Outputs

IMA shall output at least the following information to the Target Arbitration module:

- IMA application state
- Current IMA warning state: NONE, DETECTED, INFORM, or WARN
- Location of a detected IMA threat (LEFT, RIGHT), if any
- Threat level of the detected IMA threat

Blind Spot Warning / Lane Change Warning (BSW/LCW)

Scenario



MBRDNA

Figure 3-4. Illustration of BSW/LCW Scenario

Note: In the figure above, lateral and longitudinal distance offsets are relative to host vehicle geometric center (star).

Note: A remote vehicle position for BSW/LCW is referred to by the center of the remote vehicle's bumper (not the remote vehicle geometric center).

Design Assumptions

- BSW/LCW logic flow will be executed either periodically or when a new object is detected by the Target Classification module.
- A lane change warning will only be given if the turn indicator status of the turn indicator is ON.
- Blind spot zone may differ between driver-side and passenger-side blind spots.
- Only remote vehicles identified as behind left or behind right by the TC module will be processed.
- Remote vehicles that are currently ahead of the host vehicle but could possibly fall back into the blind spot zone are not considered threats.

Application Requirements

User Requirements

- BSW/LCW shall be capable of being turned ON or OFF.
- BSW/LCW shall inform the HV driver whenever a remote vehicle is located within a blind spot zone of the host vehicle.
- BSW/LCW shall provide information and warnings to the HV driver only when the host vehicle is traveling above a defined minimal speed threshold.

- BSW/LCW shall warn the HV driver only when
 - The left turn indicator status is on and at least one remote vehicle is in or will be in the left blindspot.
 - The right turn indicator status is on and at least one remote vehicle is in or will be in the right blindspot.
- When a BSW/LCW warning is determined, it shall persist at least for a defined duration of time.
- BSW/LCW shall provide informs and warnings to the HV driver regarding a particular remote vehicle only when that remote vehicle is traveling at a speed above a defined threshold.

Functional Requirements

1. BSW/LCW shall transition between one of the following states:
 - DISABLED: The BSW/LCW functionality is disabled
 - ENABLED: The BSW/LCW functionality is enabled
 - INFORM: The BSW/LCW functionality informs the HV driver of a vehicle(s) currently in a blind spot zone.
 - WARN: The BSW/LCW functionality warns the HV driver who is intending to change lanes that a vehicle(s) is currently or soon will be, in a blind spot zone.
 - FAILED: The BSW/LCW functionality determines that insufficient information from other modules is available for the BSW/LCW feature logic to function properly.
2. BSW/LCW shall enter the ENABLED state by default when the System Power is switched ON.
3. BSW/LCW shall transition from ENABLED to DISABLED state when the enable state is set to FALSE.
4. BSW/LCW shall transition from DISABLED to ENABLED state when the following conditions are satisfied:
 - The System Power is ON
 - The enable state is set to TRUE
5. BSW/LCW will use Target Classification output to further classify remote vehicles in behind left and behind right locations as possible threat vehicles in or will be in left or right blindspots.
6. BSW/LCW shall use classifications for remote vehicles to inform the HV driver of any threat vehicles that are currently occupying the blind spot zones of the host vehicle.
7. BSW/LCW shall use the host vehicle's turn signal status and classifications for remote vehicles to warn the HV driver of any threat vehicles occupying the blind spot zone in the adjacent lanes into which the host vehicle driver wants to maneuver.
8. BSW/LCW shall transition from ENABLED to INFORM state if the following conditions are valid:
 - a. Host vehicle speed is above the defined speed threshold.
 - b. Host vehicle turn indicator status is OFF.
 - c. At least one threat vehicle is positioned in a blindspot.

- d. Remote vehicle speed is above the defined remote vehicle speed threshold.
- e. Host vehicle transmission is in Drive.
9. BSW/LCW shall transition from ENABLED to WARN state if the following conditions are valid:
 - a. Host vehicle speed is above the defined speed threshold.
 - b. Host vehicle left or right turn indicator status is on.
 - c. If left turn indicator of host vehicle is on, then at least one remote vehicle is classified as in left blindspot or will be in left blindspot.
 - d. If right turn indicator of host vehicle is on, then at least one remote vehicle is classified as in right blindspot or will be in right blindspot.
 - e. Remote vehicle speed is above the defined remote vehicle speed threshold.
 - f. Host vehicle transmission is in Drive.
10. When BSW/LCW is in WARN state, BSW/LCW shall continue to provide advisory information to Threat Arbitration of any threat vehicles currently in the opposite blind spot zone.
11. BSW/LCW shall assign a threat level (between 0-100) to all remote vehicles.
12. For each blind spot zone, the remote vehicle with the highest threat level will be passed by BSW/LCW to Threat Arbitration.
13. When BSW/LCW enters the WARN state, it shall remain in that state at least for a defined duration of time.
14. BSW/LCW shall transition from INFORM to WARN if the following conditions are valid:
 - a. Host vehicle speed is above the defined speed threshold.
 - b. Host vehicle left or right turn indicator status is on.
 - c. If left turn indicator of host vehicle is on, then at least one remote vehicle is classified as in left blindspot.
 - d. If right turn indicator of host vehicle is on, then at least one remote vehicle is classified as in right blindspot.
 - e. Remote vehicle speed is above the defined speed threshold.

Inputs

BSW/LCW receives updates from the Target Classification, Sensor Data Handler, and Wireless Data Handler modules every 100ms.

Outputs

BSW/LCW shall send at least the following information to the Threat Arbitration module:

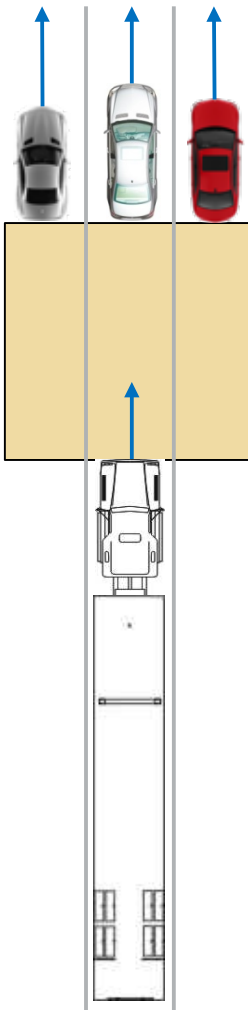
- BSW/LCW state: DISABLED, ENABLED, INFORM, WARN, or FAILED
- BSW/LCW threat location: in left, right, or both blindspots
- BSW/LCW threat ID left and/or right
- BSW/LCW threat level left and/or right
- BSW/LCW threat longitudinal offset left and/or right
- BSW/LCW threat relative velocity left and/or right
- BSW/LCW warn state: NONE, DETECTED, INFORM, or WARN

Emergency Electronic Brake Lights (EEBL)

Scenario

The application is divided into two sub-applications:

- EEBL Remote Vehicle Self-Identification: EEBL-RV.
This sub-application monitors the vehicle brake and deceleration status, and updates the event status accordingly.
- EEBL Warning: EEBL-HV.
This sub-application identifies EEBL threat vehicles, assesses the threat and warning levels, and issues warnings accordingly.



MBRDNA

Figure 3-5. Illustration of EEBL Scenario

Design Assumptions

- EEBL-RV logic flow can be executed periodically or event driven to detect the EEBL event generated by the vehicle. It will alert the WMH as a trigger for an immediate outgoing message.
- EEBL-HV shall be event driven, triggered by the EEBL event flag, set by WMH.
- Only Vehicles ahead, ahead left, or ahead right will be considered for EEBL processing.

Application Requirements

User requirements for EEBL-RV

- EEBL-RV shall be capable of being turned On or OFF.
- EEBL-RV shall be capable of setting the EEBL-RV event flag when it detects RV hard braking.

Functional Requirements for EEBL-RV

1. EEBL-RV shall transition between one of the following states:
 - DISABLED: EEBL-RV feature is disabled.
 - ENABLED: EEBL-RV feature is enabled.
 - ENGAGED: EEBL-RV is monitoring the relevant data inputs and updating the EEBL-RV status.
 - FAILED: EEBL-RV is unavailable because of one or more failures/faults in the system.
2. EEBL-RV shall be in the ENABLED state when System Power is switched to ON.
3. EEBL-RV state shall transition from ENABLED to DISABLED state when the EEBL-RV enabled is FALSE.
4. EEBL-RV shall transition from DISABLED to ENABLED state when the following conditions are satisfied:
 - The system power is ON.
 - EEBL-RV enable is TRUE.
 - EEBL-RV failure is FALSE.
5. EEBL-RV enable state shall be TRUE by default.
6. EEBL-RV state shall transition from ENABLED to ENGAGED if the following conditions are satisfied:
 - EEBL-RV state is ENABLED.
 - RV is moving forward (transmission is in Drive).
 - RV speed is above a predefined threshold.

7. When EEBL-RV state is ENGAGED, EEBL-RV shall process inputs from the Sensor Data Handler at least every 100ms.
8. EEBL-RV Status shall be set to FALSE by default.
9. EEBL-RV shall set its Status to TRUE if the vehicle brakes above a preset threshold.

User requirements for EEBL-HV

- EEBL-HV shall be capable of being turned On or OFF.
- EEBL-HV shall be capable of warning the driver only when the host vehicle speed is above a specified threshold
- EEBL-HV shall warn the driver when the host vehicle determines that there is a threat.
- When EEBL-HV issues a warning, it shall persist for at least a predetermined duration.
- EEBL-HV shall suppress the warning if the host vehicle applies sufficient brake.
- EEBL-HV shall be capable of providing multi-stage warnings to indicate level of urgency.

Functional Requirements for EEBL-HV

10. EEBL-HV shall transition between one of the following states:
 - DISABLED: EEBL-HV feature is disabled.
 - ENABLED: EEBL-HV feature is enabled.
 - ENGAGED: EEBL-HV is monitoring the target vehicle(s) data inputs and updating the EEBL threat level(s).
 - FAILED: EEBL-HV is unavailable because of one or more failures/faults in the system.
11. EEBL-HV state shall be set to ENABLED when System Power is ON.
12. EEBL-HV shall transition from ENABLED to DISABLED state when EEBL-HV enabled is FALSE.
13. EEBL-HV shall transition from DISABLED to ENABLED state when the following conditions are satisfied:
 - The system power is ON.
 - EEBL-HV enable is TRUE.
 - EEBL-HV failure is FALSE.
14. EEBL-HV enable shall be TRUE by default.
15. EEBL-HV shall transition from ENABLED to ENGAGED state if the following conditions are valid:
 - EEBL-HV state is ENABLED.
 - HV speed is above a preset threshold.
 - HV is moving forward (in Drive gear).

16. When EEBL-HV is ENGAGED, EEBL-HV shall continuously process inputs from the following subsystems: Target Classification, Sensor Data Handler, and Wireless Data Handler every 100ms.

- EEBL-HV shall select the threat vehicle(s) that satisfy the following conditions:
 - Classified as one of the followings: Ahead, Ahead Left, or Ahead Right.
 - Longitudinal offset from RV's rear bumper to the host vehicle's front bumper is less than preset maximum range.
 - EEBL-RV Status is TRUE (identified by the event flag in the incoming messages).
 - During the EEBL event, HV detects that RV's braking exceeds a pre-defined deceleration value from the time HV first receives the EEBL-RV status as True.

- EEBL-HV shall process all threat vehicles to set the warning state(s) and to calculate threat levels for each remote (threat) vehicle.
 - EEBL WARN shall be NONE by default.
 - EEBL WARN shall be set according to the threat level.
 - When EEBL WARN is WARN, it shall remain in that level for at least a specified minimum amount of time.
 - EEBL threat level shall be NONE if the host vehicle applies or has already applied sufficient brakes to avoid a collision with the RV.

- EEBL-HV shall select the RV with the highest EEBL threat level and output this data and other threat related data to the Threat Arbitration module

Inputs

EEBL receives updates from the Target Classification, Sensor Data Handler, and Wireless Data Handler modules every 100ms.

Outputs

EEBL shall send at least the following information to the Threat Arbitration module:

EEBL-RV state: DISABLED, ENABLED, ENGAGED, or FAILED

EEBL-RV Status: TRUE, FALSE

EEBL-HV state: DISABLED, ENABLED, ENGAGED, or FAILED

EEBL-HV threat location: AHEAD, AHEAD LEFT, or AHEAD RIGHT)

EEBL-HV threat ID

EEBL-HV threat level (per threat ID)

EEBL-HV threat longitudinal offset (per threat ID)

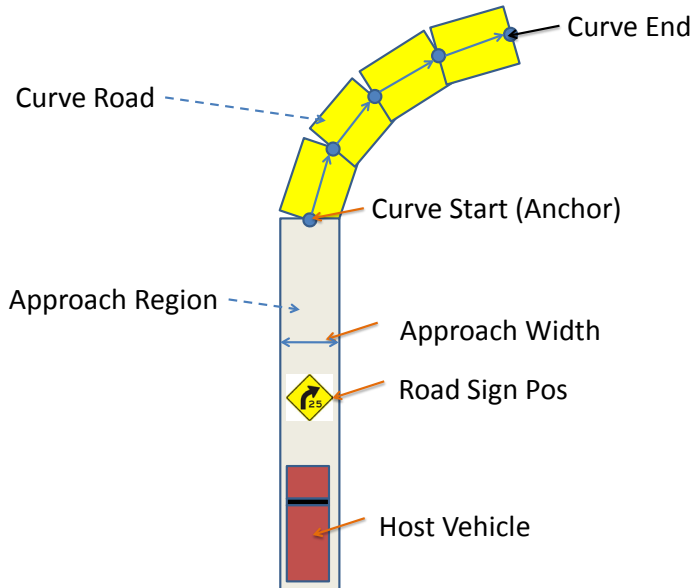
EEBL-HV threat Relative Velocity (per threat ID)

EEBL-HV WARN state: NONE, DETECTED, INFORM, or WARN

Curve Speed Warning (CSW)

Scenario

CSW shall inform or warn the HV driver if the HV speed is faster than the advised speed when it is approaching a curve.



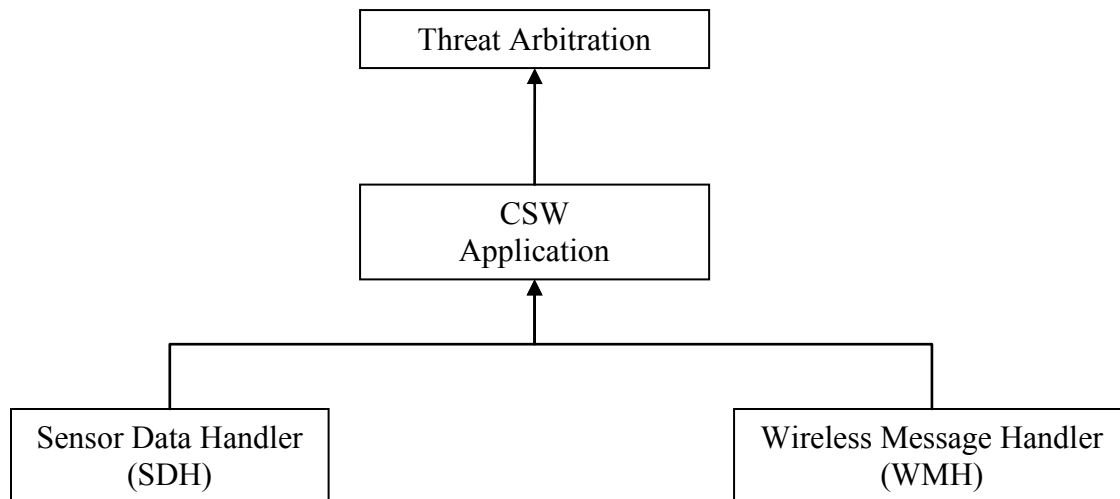
MBRDNA

Figure 3-6. Illustration of the CSW Scenario

Design Assumptions

- RSE shall broadcast Traveler Information Message (TIM) message periodically.
- CSW shall be event driven, triggered by the TIM event flag, set by WMH.

CSW Interface within System Architecture



MBRDNA

Figure 3-7. CSW Functional Context Diagram

Application Requirements

User requirements

- CSW shall be capable of being turned On or Off.
- CSW shall provide warning or cautionary inform to the driver only when the speed of the host vehicle is at least above a configurable threshold.
- CSW shall output the target speed of the most relevant curve and the current distance to the curve start.
- CSW shall allow adjustment to the target curve speed, depending on the type of host vehicles or host vehicle configurations.
- CSW shall be capable of providing warning or cautionary inform depending on the imminent threat levels.
- CSW will provide cautionary inform when a relevant curve is ahead and the distance to the curve start is less than the comfortable braking distance, which is calculated based on the current vehicle speed and target curve speed ahead.
- CSW will provide warning when a relevant curve is ahead and the distance to the curve start is less than the emergency braking distance, which is calculated based on the current vehicle speed and target curve speed ahead.
- CSW shall suppress advisory / warning if the host vehicle has passed the curve.

Functional Requirements

1. CSW shall transit between one of the following CSW states:
 - DISABLED: The CSW feature is disabled
 - ENABLED: The CSW feature is enabled
 - ENGAGED: The CSW feature is engaged
 - FAILED: The CSW feature is unavailable because of one or more failures/faults in the system.
2. CSW shall enter the ENABLED state by default when the System Power is switched on. CSW shall reset to the ENABLED state following all power cycles.
3. CSW shall transit from ENABLED to ENGAGED if the following conditions are valid:
 - Host vehicle speed is above the configured application threshold speed
 - Host vehicle is moving in the forward direction
4. CSW shall transit to FAILED if the inputs are invalid.
5. When CSW is ENGAGED, CSW shall process every TIM message received by the Wireless Message Handler. CSW shall put a curve speed sign in a tracking list if:
 - the sign ID is new to the host vehicle or a sign ID's valid duration has been updated
 - the valid duration of the sign does not expire
6. When CSW is ENGAGED, CSW shall process inputs from the Sensor Data Handler every 100ms and use the host vehicle's current heading and position to determine the relevance of signs being tracked by the host vehicle. If a sign is relevant, CSW shall:
 - output the distance to the start of the curve and distance to the sign
 - check if the host vehicle is inside the curve or not
 - calculate the target speed of the curve associated with the sign by applying the speed adjustment, if any, on the advisory speed of the sign
7. When CSW is ENGAGED, CSW shall periodically process inputs from the Sensor Data Handler and use the host vehicle's current speed, target speed of the curve, and the assumed deceleration of the host vehicle to calculate
 - a comfortable braking distance
 - an emergency braking distance
 - threat level
8. Threat level shall be assigned an integer value between 0 and 100.

9. CSW warning state shall be assigned as one of the following:
 - NONE
 - DETECTED
 - INFORM
 - WARN
10. CSW warning state shall transit from NONE to DETECTED if there are any relevant curve speed signs.
11. CSW warning state shall transit to INFORM if distance to the curve start is shorter than the calculated comfortable braking distance, but longer than the emergency braking distance.
12. CSW warning state shall transit to WARN if distance to the curve start is close to or shorter than the calculated emergency braking distance.
13. The CSW warning state shall be reset to NONE after the host vehicle has passed the curve.

Inputs

The user shall enable CSW through the CSW_ENABLE switch.

The Sensor Data Handler module will provide vehicle:

- Position
- Speed
- Heading
- Brake Status
- PRNDL
- Turn signal indicator Status
- Longitudinal acceleration
- SDH_SEQ_NUM (for relaying to Threat Arbitration block)
- SDH_STATE (for setting CSW_FAILURE)

The Wireless Message Handler module will provide:

- TIM data
- WMH_SEQ_NUM (for relaying to Threat Arbitration block)
- WMH_STATE (for setting CSW_FAILURE)

Calibration parameters from Application Parameters file:

- CSW Minimum Speed Threshold
- CSW maximum assumed braking factor
- CSW advisory speed adjustment

Outputs

CSW shall send at least the following information to the Threat Arbitration module:

- CSW state: DISABLED, ENABLED, ENGAGED, or FAILED
- CSW failure: true or false
- CSW most relevant curve speed sign ID
- CSW distance to the most relevant curve start along the direction of travel
- Target speed of the most relevant curve
- Direction of the most relevant curve: left, right, ahead
- Flag if inside the curve: true or false
- CSW threat level
- Current speed of the host vehicle
- CSW WARN state: NONE, DETECTED, INFORM, or WARN
- CSW emergency braking distance
- CSW comfortable braking distance

APPENDIX A. WSU Configuration Parameters for Connected Commercial Vehicles

The following table lists WSU configuration parameters that may need to be modified to account for differences between LVs and CCVs. These parameters are used in various WSU software modules and applications and make it possible to easily customize performance characteristics of these modules and applications to the vehicle hosting the OBE.

Parameter Name	Parameter Description	Implications
BSWLCWHorizonTimeS	A time horizon in which a closing vehicle must enter the blind spot zone to be considered “Will be in Blind Spot”	Increase default value to account for CCV longer lane change time
BSWLCWBsLengthLeftM	Length of the left blind spot zone	A CCV has a longer blind spot zone than LVs
BSWLCWBsLengthRightM	Length of the right blind spot zone	A CCV has a much longer blind spot zone on the right
EEBLMaxLongOffsetDistM	Longitudinal length of the EEBL zone	A longer EEBL zone is needed when CCV is the host vehicle
FCWMaxRangeM	Maximum longitudinal range for FCW application	Increase default value to account for longer CCV stopping distance
FCWDriverReactionTimeS	Assumed driver reaction time in s	May need longer reaction time for CCV drivers
FCWCaFollowCeilingFactor	Maximum host vehicle deceleration	Need to adapt to CCV braking
FCWCaFollowFloorFactor	Minimum host vehicle deceleration	Need to adapt to CCV braking
IMAMinCrossPathS	Minimum acceptable separation time (in seconds) between an HV and RV below whose absolute value a collision is possible	May need more time buffer for CCV in crossing paths
IMAMaxRvRangeM	Maximum range to intersection point that IMA considers RVs for warning or informing	May need longer default range to account for longer CCV stopping distance
IMABrakingSystemDelayS	Estimated response time for a braking system from brake pedal press to brake application	Adapt to CCV braking profile
IMABrakingConstant	A unitless braking parameter representing a fraction of gravitational acceleration	Need to adapt to CCV braking system

Parameter Name	Parameter Description	Implications
IMAInformMultiplier	A unitless multiplier used to determine the size of the inform zone based on the size of the warn zone	May need to adjust default value
COMMONAntAdjXm	Longitudinal offset adjustment if GPS antenna is not installed at the center of the vehicle	Need to allow for CCV size and changes in configuration
COMMONAntAdjYm	Lateral offset adjustment if GPS antenna is not installed at the center of the vehicle	Need to allow for CCV size and changes in configuration
COMMONMultiRadioEnable	Enable/Disable simultaneous dual radio use for WMH/VSC-A	May adjust for dual WSUs

U.S. Department of Transportation
ITS Joint Program Office-HOIT
1200 New Jersey Avenue, SE
Washington, DC 20590

Toll-Free "Help Line" 866-367-7487
www.its.dot.gov

FHWA-JPO-13-106



U.S. Department of Transportation