

APPENDIX A

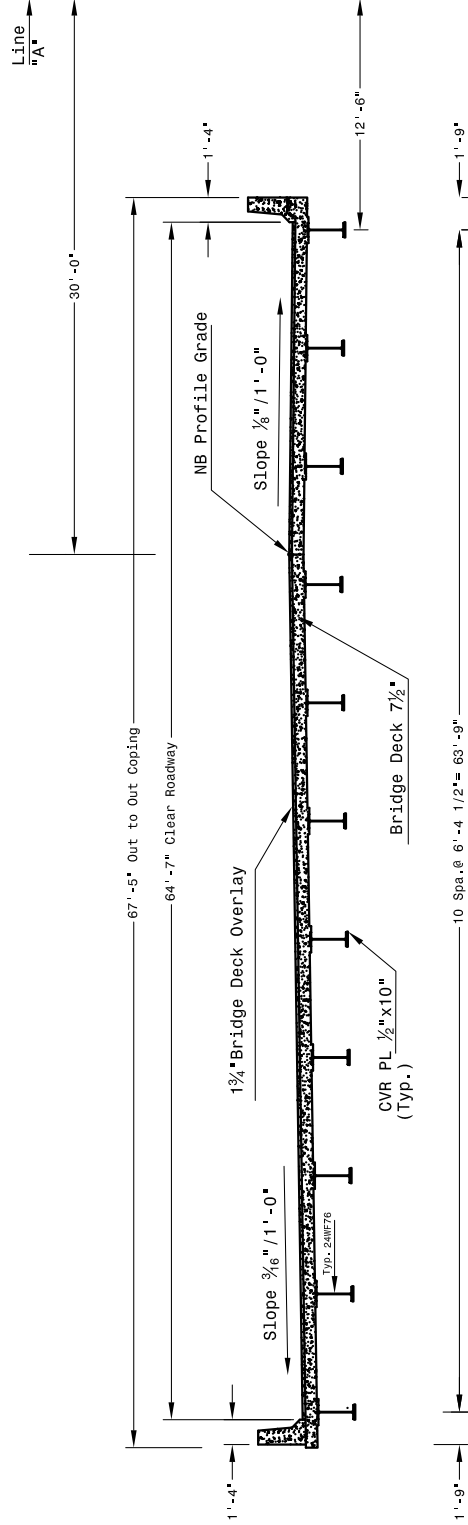
Instrumentation Plans



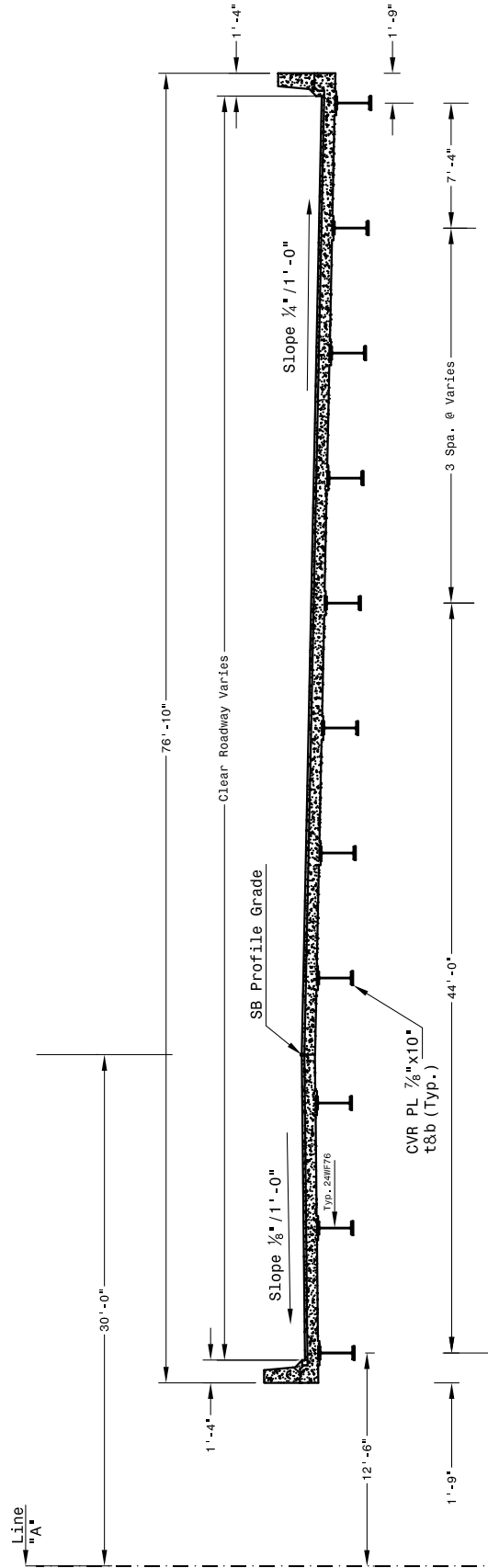
1040 SOUTH RIVER ROAD
WEST LAFAYETTE, IN 47906
P: 765-494-2227 F: 765-494-9886

PROJECT:
**I-465 Bridge,
Indianapolis, IN**

SHEET NOTES:
ADD NOTES HERE.



SECTION A1-A1



SECTION A2-A2

REVISIONS:
NO. 1 DATE: 02-04-2010
BY: STM

DESIGNED BY: INDDT
DRAWN BY: STM
NO SCALE
CHECKED BY: RJS & RJC
DATE: 01/07/2010
PROJECT NO.:
SHEET TITLE:

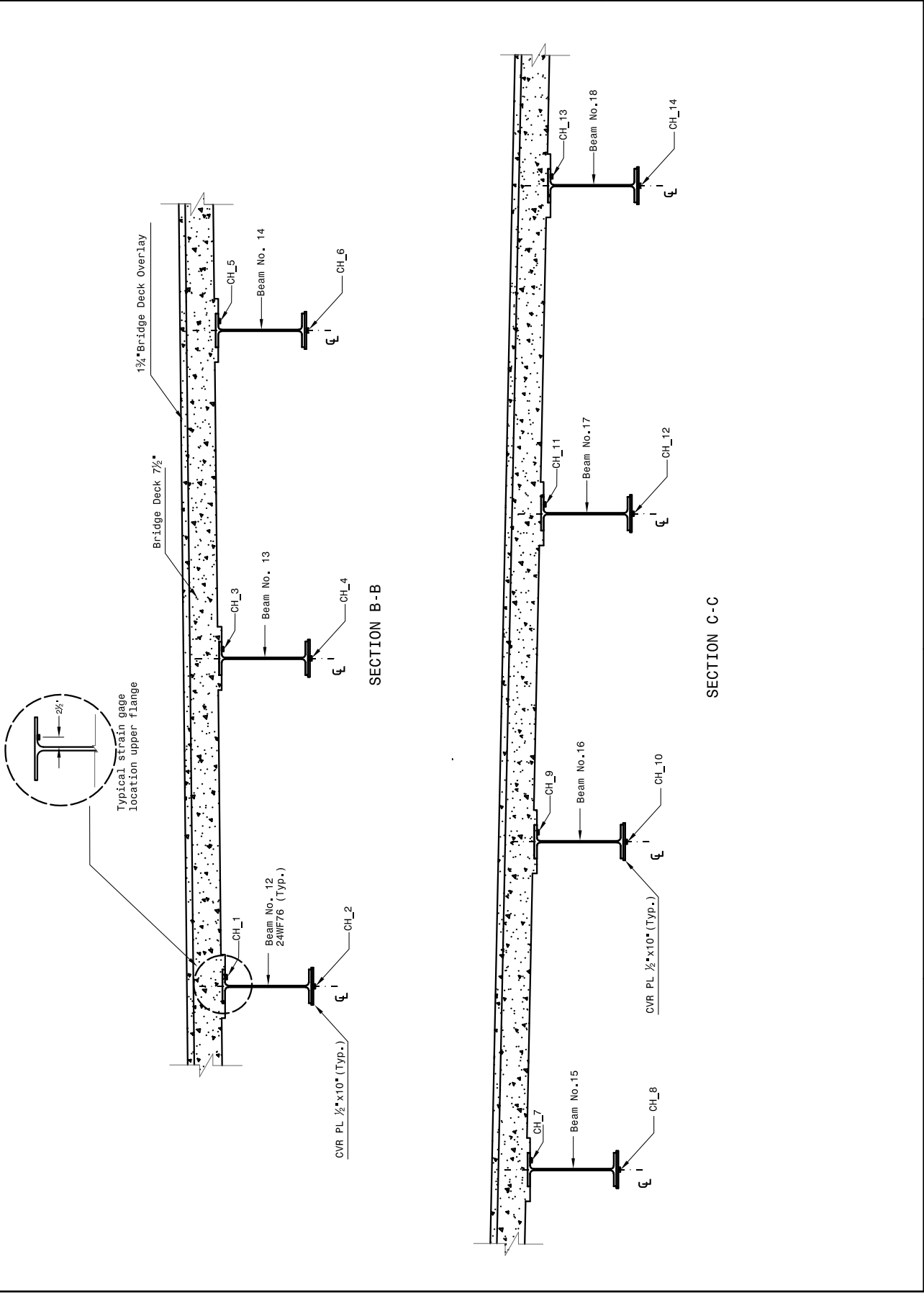
SECTION A1-A1
SECTION A2-A2

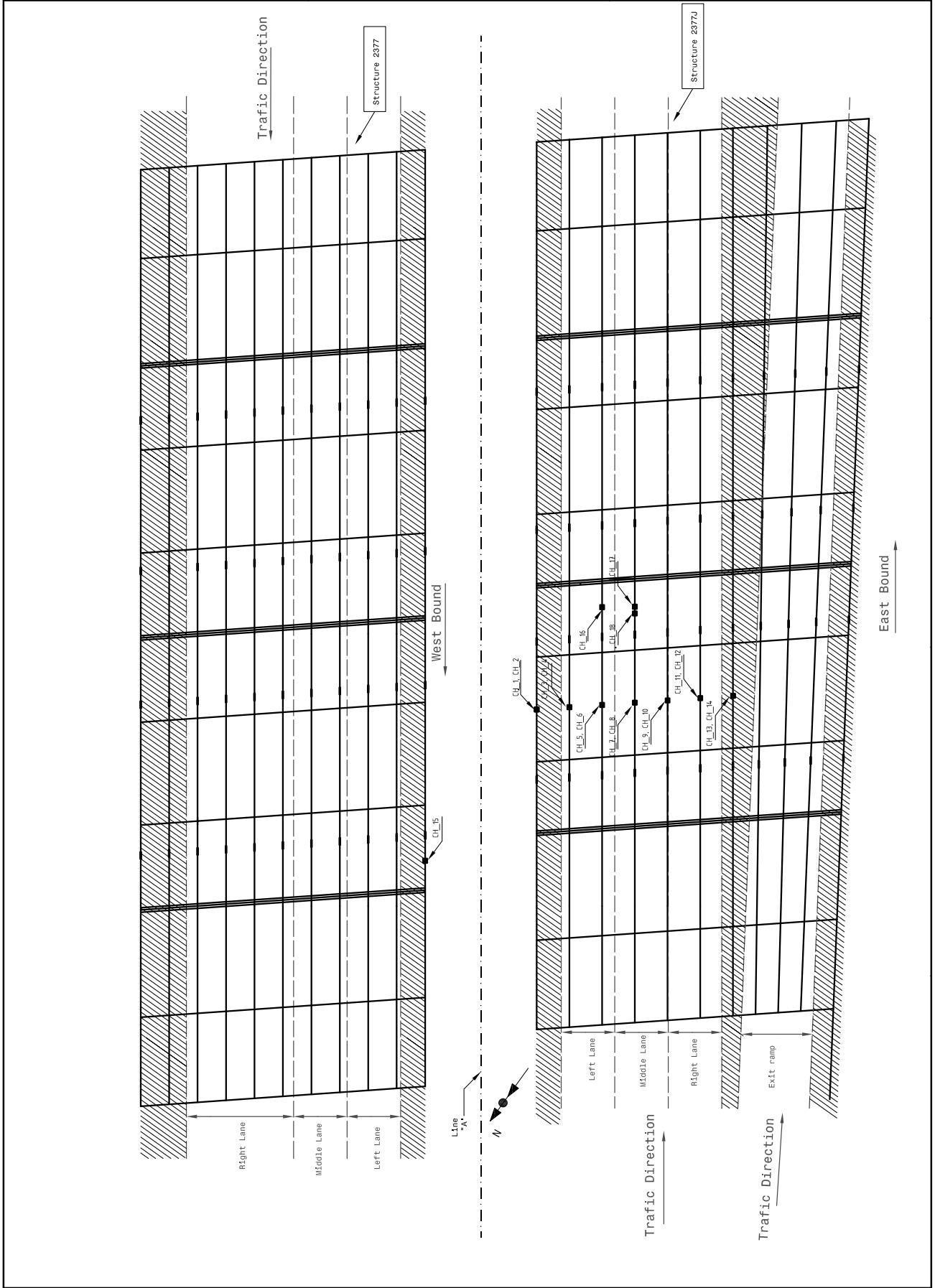
REVISIONS:

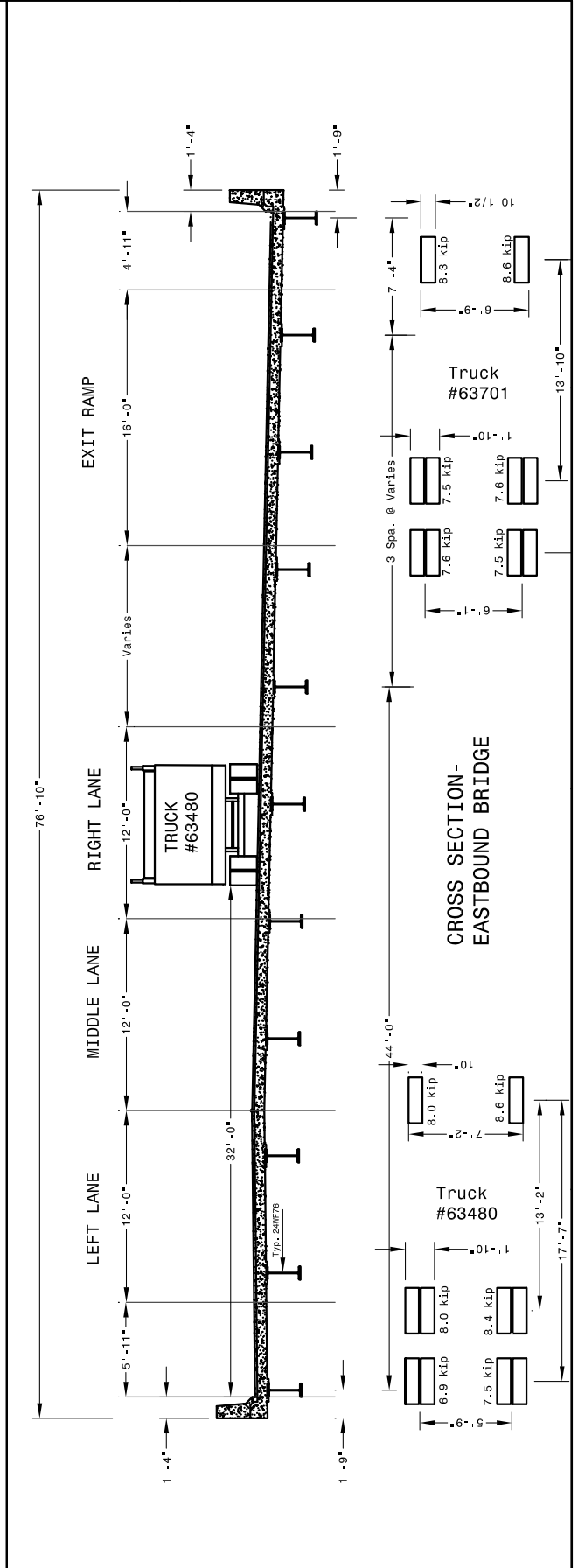
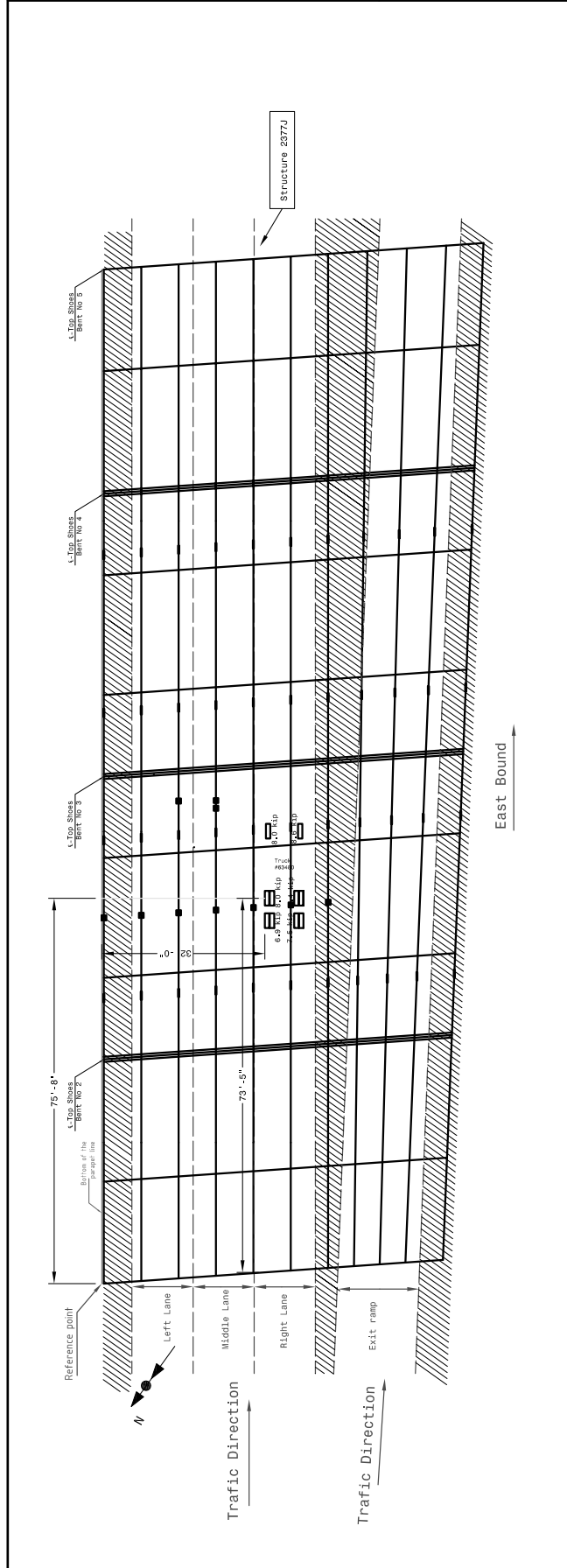
NO. 1	DATE: 01-27-10
BY	
DESCRIPTION	

DESIGNED BY: JMDOT
DRAWN BY: SIM
NO. SCALE
CHECKED BY: RJS & RLC
DATE: 01/07/2010
PROJECT NO.:
SHEET TITLE:

Cross Sections B-B & C-C
CH_1 trough CH_14







REVISIONS:

NO. 1	DATE: 04-21-2010
BY: STM	
DESCRIPTION	
DESIGNED BY: JINDOOT	
DRAWN BY: STM	
NO SCALE	
CHECKED BY: RJS & RJC	
DATE: 03/22/2010	
PROJECT NO.:	
SHEET TITLE:	

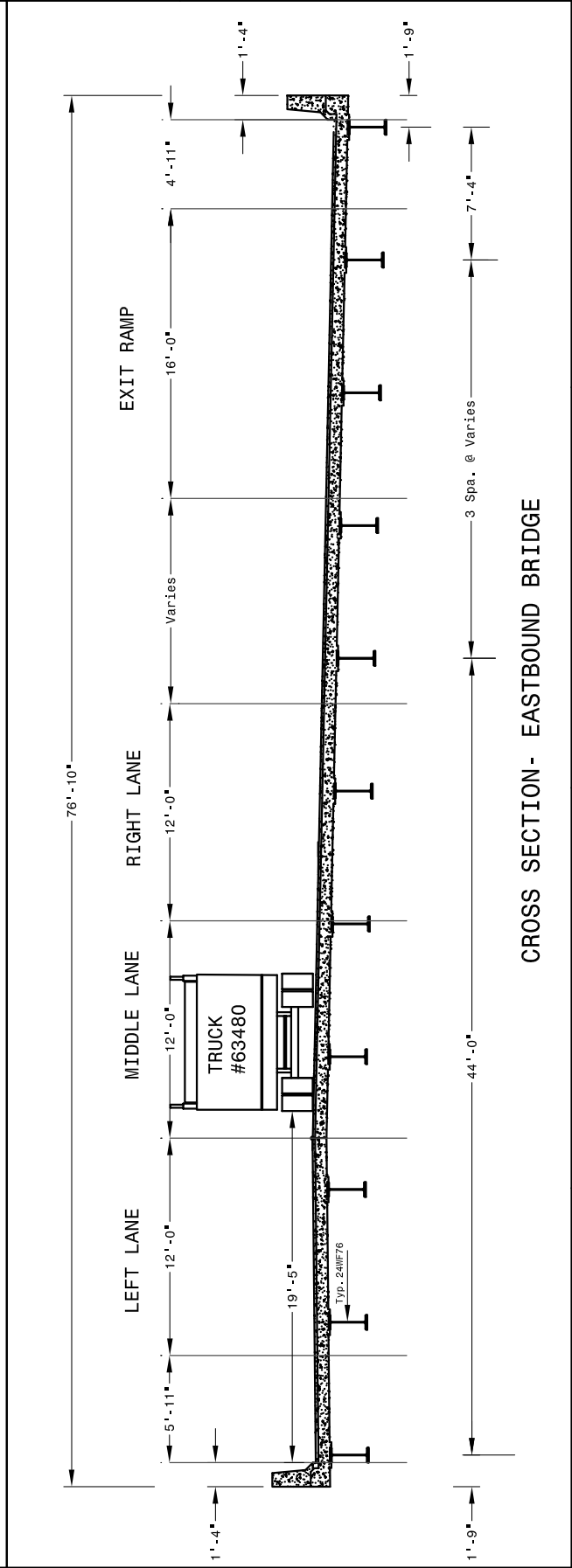
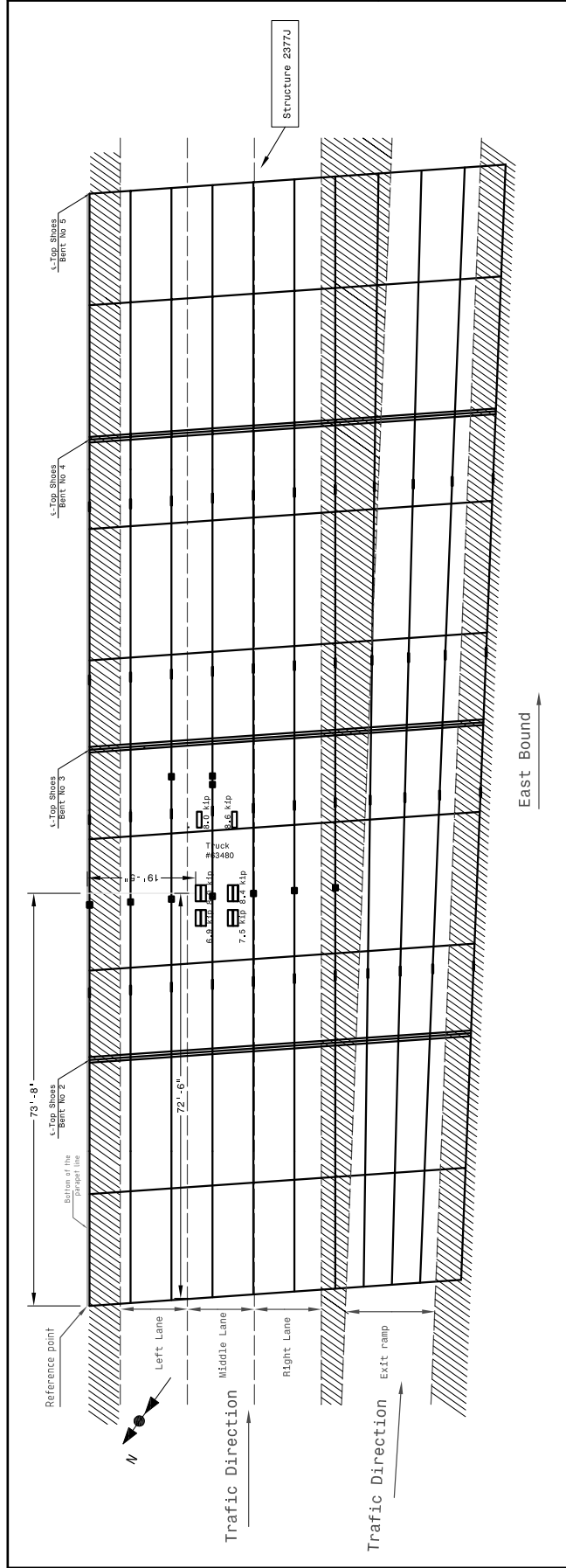
Calibration Testing
PARK_4.DAT - Single
Truck - Right Lane



1040 SOUTH RIVER ROAD
WEST LAFAYETTE, IN 47906
P: 765-494-2227 F: 765-494-8886

PROJECT:
**I-465 Bridge,
Indianapolis, IN**

SHEET NOTES:



REVISIONS:

NO. 1	DATE: 04-21-2010
BY: SIM	
DESCRIPTION	
DESIGNED BY: JINDOT	
DRAWN BY: SIM	
NO. SCALE	
CHECKED BY: RJS & RJC	
DATE: 03/22/2010	
PROJECT NO.:	
SHEET TITLE:	

Calibration Testing
PARK_2C.DAT - Single
Truck - Middle Lane

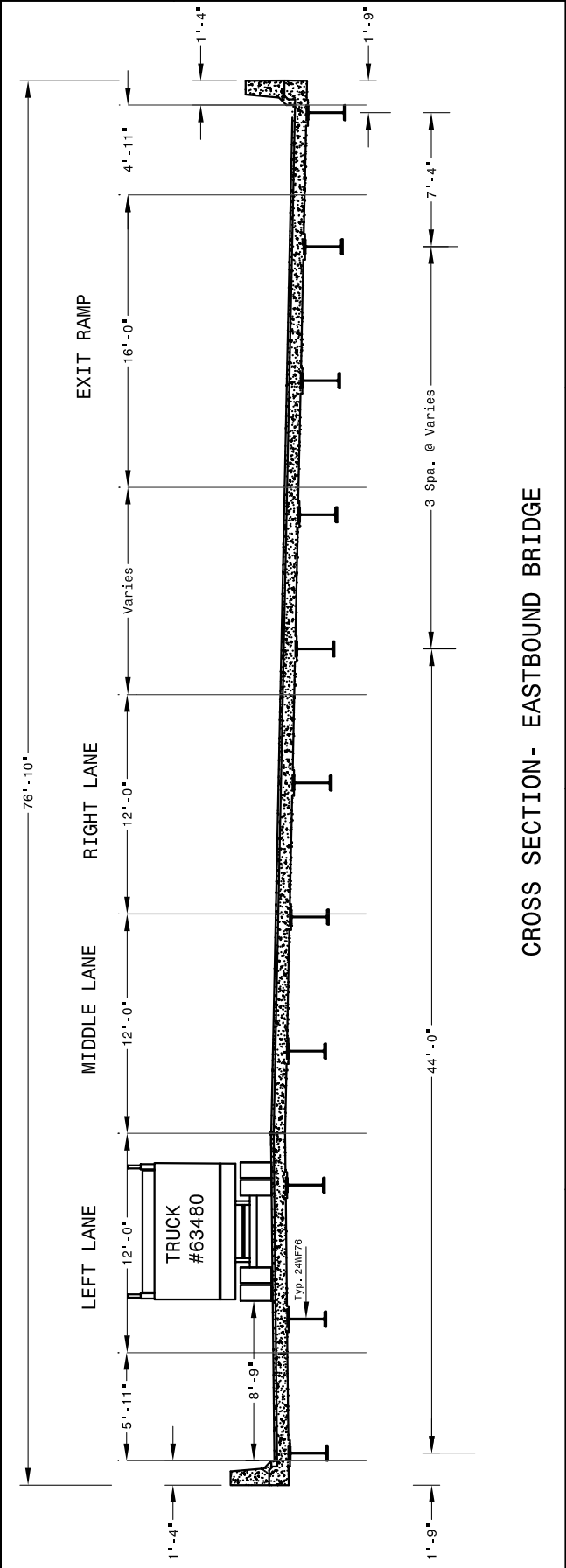
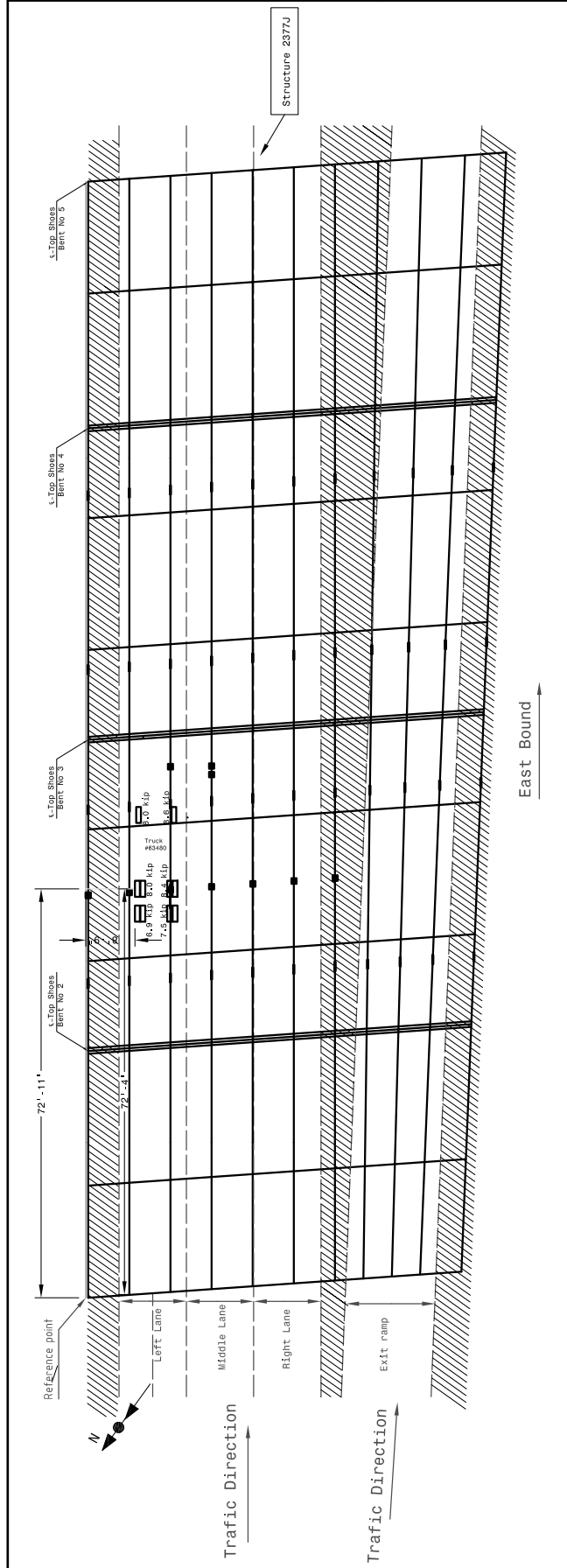
CROSS SECTION - EASTBOUND BRIDGE



1040 SOUTH RIVER ROAD
WEST LAFAYETTE, IN 47906
P: 765-494-2227 F: 765-494-8886

PROJECT:
I-465 Bridge,
Indianapolis, IN

SHEET NOTES:
The beam # included the 2
beams added in 1992 on the
No. 0 bridge.



CROSS SECTION- EASTBOUND BRIDGE

REVISIONS:	NO. 1	DATE: 04-21-2010
BY: STM		
DESCRIPTION		
DESIGNED BY: JMDOT		
DRAWN BY: STM		
NO SCALE		
CHECKED BY: RJS & RLC		
DATE: 03/22/2010		
PROJECT NO.:		
SHEET TITLE:		

Calibration Testing
PARK 1.DAT - Single
Truck - Left Lane

