

ARIZONA

MOTOR VEHICLE CRASH FACTS

2010



2010 Motor Vehicle Crash Facts for the State of Arizona

Prepared by:
The Arizona Department of Transportation
Intermodal Transportation Division

Publication Date: August 22, 2011



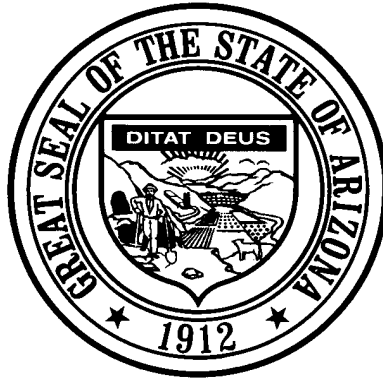
This publication is an annual statistical review of the motor vehicle crashes in the State of Arizona for the calendar year 2010. The results are compiled from Arizona Traffic Accident Reports submitted to the Arizona Department of Transportation by state, county, city, tribal, and other law enforcement agencies. Specific inquiries regarding the data in this report should be directed to:

The Arizona Department of Transportation
Intermodal Transportation Division
Traffic Records Section
206 S. 17th Ave. MD 064R
Phoenix, AZ 85007-3213

E-mail: azcrashfacts@azdot.gov

In order to provide the most current information, preliminary data is utilized when necessary. For this reason, previous or future reports may differ slightly and we encourage you to refer to the latest issue of Motor Vehicle Crash Facts.

This issue as well as previous issues of this publication may be viewed and downloaded from ADOT's Web Site at:
<http://www.azdot.gov/mvd/Statistics/crash/index.asp>



Janice K. Brewer
Governor

Arizona Department of Transportation

John S. Halikowski
Director

State Transportation Board

William (Bill) J. Feldmeier – District 6
Chairman

Barbara (Bobbie) Ann Lundstrom – District 3
Vice Chairwoman

Members

Felipe Andres Zubia – District 1

Victor Flores – District 1

Stephen W. Christy – District 2

Kelly O. Anderson – District 4

Hank Rogers – District 5

OVERVIEW

Section 1: – Highlights and Historical Trends1

Section 2: – Geographic Location.....9

Section 3: – Crash Descriptions17

Section 4: – Safety Devices23

Section 5: – Motor Vehicle and Driver Descriptions26

Section 6: – Alcohol Related Crashes.....32

Section 7: – Pedestrian and Pedalcyclist Crashes41

Section 8: – Motorcycle (MC) Crashes46

Acknowledgements55

2010 Arizona Crash Facts Summary

Table of Contents

Section 1: Highlights and Historical Trends	1
Arizona Crash Facts Summary and Comparison.....	2
Arizona at a Glance – 2010	2
Licensed Drivers, Motor Vehicle Registration and Crash History in Arizona	3
Historical Trends – Arizona and the United States	3
Statewide Economic Loss Due to Motor Vehicle Crashes	4
Average Economic Cost per Incident.....	4
Traffic Crashes in Arizona by Year.....	5
Victims of Motor Vehicle Crashes	6
Arizona’s 2010 Estimated Population	6
Victims of Motor Vehicle Crashes (Arizona Residents Only)*	6
Vehicle Miles Traveled	7
Arizona vs. U.S. Fatality Rate	7
Traffic Fatalities by Geographic Region	7
Traffic Injuries by Geographic Region.....	7
Holiday Crash Statistics	8
Section 2: Geographic Location	9
Crash Severity by First Harmful Event Statewide.....	10
Crashes by County	10
Crash Severity by First Harmful Event in Urban Areas	11
Crash Severity by First Harmful Event in Rural Areas	11
Analysis by Jurisdiction	12
Total Fatalities by County for 2009 and 2010.....	15
Urban and Rural Crashes by Day of Week.....	16
Urban and Rural Fatal Crashes by Day of Week.....	16
All Urban and Rural Crashes vs. Urban and Rural Fatal Crashes by Month.....	16
Section 3: Crash Descriptions	17
Manner of Collision in Multi-Vehicle Crashes	18
Lighting Conditions.....	18
Weather Conditions.....	18
Road Surface Conditions.....	19
Roadway Grade.....	19
Roadway Alignment.....	19
All Crashes vs. Fatal Crashes by Time of Day - Weekdays.....	20
All Crashes vs. Fatal Crashes by Time of Day - Weekends.....	20
Crashes by Day of Week	21
Fatal Crashes by Day of Week	21
All Crashes vs. Fatal Crashes by Month	21
Crashes by Hour and Day of Week	22
Section 4: Safety Devices	23
Child Safety Device Usage (less than five years old).....	24
Driver Safety Device Usage	24
Passenger Safety Device Usage.....	24
Driver Safety Device Usage by Gender	25
Driver Safety Device Usage by Age	25
Section 5: Motor Vehicle and Driver Descriptions	26
Arizona Motor Vehicle Registrations.....	27
Motor Vehicle Crash Involvement by Vehicle Type.....	27
Hit and Run Drivers Involved in Crashes.....	28
Gender of Drivers Involved in Crashes	28

2010 Arizona Crash Facts Summary

License Status of Drivers Involved in Crashes	28
Passengers Killed and Injured by Age and Gender	28
Drivers and Passengers Killed and Injured by Vehicle Type	29
Drivers Killed and Injured by Age and Gender	29
Licensed Drivers in Arizona by Age	30
Driver Involvement by Age	30
Driver Errors	31
Driver Physical Condition	31
Section 6: Alcohol Related Crashes	32
Economic Loss Due to Alcohol Related Crashes in Arizona for 2010	33
Alcohol Related Crash History	33
Manner of Collision in Alcohol Related Crashes	33
Alcohol Related Crashes by First Harmful Event	34
Alcohol Related Crashes by Vehicle Type	34
Lighting Conditions in Alcohol Related Crashes	35
Road Surface Conditions in Alcohol Related Crashes	35
Gender of Drivers Involved in Alcohol Related Crashes	35
Driver Involvement by Age in Alcohol Related Crashes	36
When Alcohol Related Crashes Occurred in 2010	36
Safety Device Usage for Drinking Drivers	36
Persons Killed and Injured in Alcohol Related Crashes	37
Alcohol Related Crashes by County	37
All Alcohol Related Crashes vs. Fatal Alcohol Related Crashes by Day of Week	38
All Alcohol Related Crashes vs. Fatal Alcohol Related Crashes by Month	38
All Alcohol Related Crashes vs. Fatal Alcohol Related Crashes - Weekdays	39
All Alcohol Related Crashes vs. Fatal Alcohol Related Crashes - Weekends	39
Alcohol Related Crashes by Hour and Day of Week	40
Section 7: Pedestrian and Pedalcyclist Crashes	41
Pedestrians Killed and Injured By Age and Gender	42
Pedestrian Crashes by Geographic Location	42
Pedestrian Crash History	42
Pedestrians Killed by Age and Action	43
Pedestrians Injured by Age and Action	43
Pedestrian Physical Condition in Motor Vehicle Crashes	43
Lighting Conditions in Pedestrian Crashes	44
Weather Conditions in Pedestrian Crashes	44
Pedalcyclists Killed and Injured by Age and Gender	44
Pedalcycle Crashes by Geographic Location	45
Pedalcycle Crash History	45
Lighting Conditions in Pedalcyclist Crashes	45
Weather Conditions in Pedalcyclist Crashes	45
Section 8: Motorcycle (MC) Crashes	46
MC Fatalities by Year	47
MC Registrations in Arizona	47
Fatality Rate per Registered MC	47
Percent of MC Crashes to All Crashes	47
MC Crashes by First Harmful Event	48
Lighting Conditions in MC Crashes	48
Road Surface Conditions in MC Crashes	48
MC Crashes by Geographic Location	49
Operator Involvement by Age in MC Crashes	49
MC Operator Physical Condition	49
MC Operators Involved in Fatal Crashes by License Status	50
MC Operator's Helmet Use	50

2010 Arizona Crash Facts Summary

MC Passenger's Helmet Use	50
MC Operators and Passengers Killed and Injured.....	51
MC Operator Errors	51
All MC Crashes vs. Fatal MC Crashes by Time of Day - Weekdays.....	52
All MC Crashes vs. Fatal MC Crashes by Time of Day - Weekends.....	52
All MC Crashes vs. Fatal MC Crashes by Day of Week.....	53
Alcohol Related MC Crashes vs. Fatal Alcohol Related MC Crashes by Day of Week.....	53
MC Crashes by Hour and Day of Week.....	54
Acknowledgements	55

2010 Arizona Crash Facts Summary

BREAKDOWN OF ALL CRASHES IN ARIZONA

TOTAL	106,177
FATAL	698
INJURY	33,195
PROPERTY DAMAGE ONLY	72,284
URBAN	84,802
RURAL	21,375
ALCOHOL RELATED	5,489
PEDESTRIAN	1,449
PEDALCYCLE	1,914
MOTORCYCLE	2,735
SINGLE VEHICLE	18,501
MULTI-VEHICLE	87,676

BREAKDOWN OF FATAL CRASHES IN ARIZONA

TOTAL	698
ALCOHOL RELATED	210
URBAN	354
RURAL	344
SINGLE VEHICLE	287
MULTI-VEHICLE	411
ALCOHOL RELATED SINGLE VEHICLE	100
ALCOHOL RELATED MULTI-VEHICLE	110

BREAKDOWN OF PERSONS KILLED AND INJURED

TYPE	KILLED	INJURED
IN ALL CRASHES	762	50,110
IN ALCOHOL RELATED CRASHES	223	3,724
IN URBAN CRASHES	380	39,907
IN RURAL CRASHES	382	10,203
USING SAFETY DEVICE	189	39,905
NOT USING SAFETY DEVICE	266	3,800
DRIVERS AGE 24 OR YOUNGER	59	7,896
DRINKING DRIVERS AGE 24 OR YOUNGER	30	519

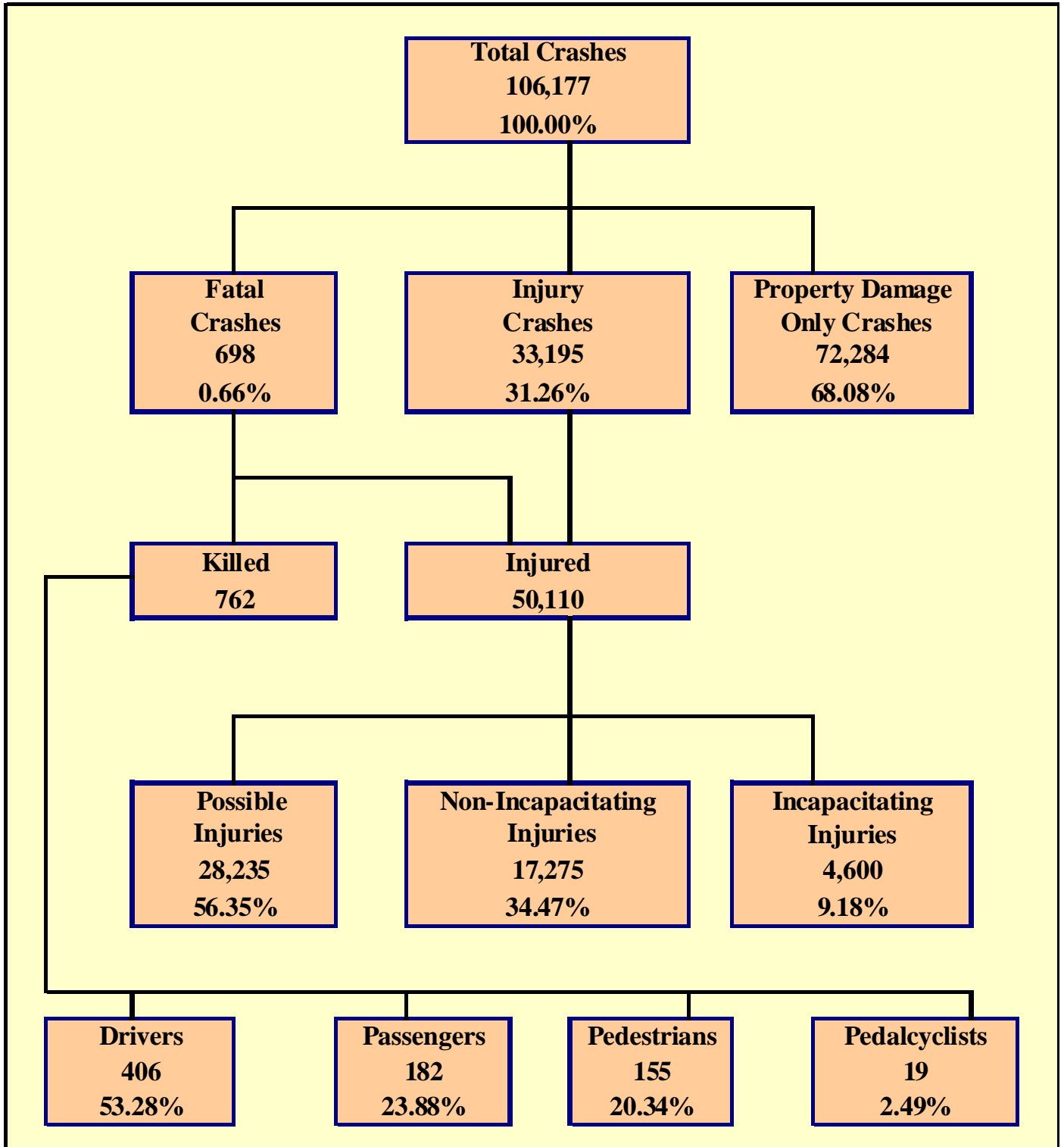
BREAKDOWN OF CRASHES BY TIME

PEAK MONTH FOR ALL CRASHES	OCTOBER
PEAK DAY FOR ALL CRASHES	FRIDAY
PEAK HOUR FOR ALL CRASHES	5 PM - 6 PM
PEAK MONTH FOR FATAL CRASHES	MAY
PEAK DAY FOR FATAL CRASHES	FRIDAY
PEAK DATE FOR ALL CRASHES IN 2010	OCTOBER 5TH (535 CRASHES)
PEAK HOUR FOR ALCOHOL RELATED CRASHES	2 AM - 3 AM
PEAK DAY FOR FATAL ALCOHOL RELATED CRASHES	SATURDAY
PEAK HOUR FOR MOTORCYCLE CRASHES	4 PM - 5 PM
PEAK DAY FOR FATAL MOTORCYCLE CRASHES	FRIDAY

OTHER FACTS

MOST COMMON MANNER OF COLLISION	Rear-End
MOST COMMON DRIVER VIOLATION	Speed too fast for conditions

THIS PAGE LEFT BLANK FOR PRINTING PURPOSES



Section 1: – Highlights and Historical Trends

Table 1 - 1

Arizona Crash Facts Summary and Comparison

Category	2009	2010	Percent Change
Total Crashes	107,094	106,177	-0.86%
Total Fatalities	806	762	-5.46%
Total Injuries	50,776	50,110	-1.31%
Alcohol Related Fatalities	267	223	-16.48%
Alcohol Related Injuries	4,174	3,724	-10.78%
Urban Fatalities	325	380	16.92%
Urban Injuries	39,686	39,907	0.56%
Rural Fatalities	481	382	-20.58%
Rural Injuries	11,090	10,203	-8.00%
MC Operator and Passenger Fatalities	122	86	-29.51%
MC Operator and Passenger Injuries	2,482	2,390	-3.71%
Pedestrians Fatalities	122	155	27.05%
Pedestrians Injuries	1,309	1,236	-5.58%
Pedalcyclist Fatalities	25	19	-24.00%
Pedalcyclist Injuries	1,648	1,583	-3.94%
Millions of vehicle miles traveled (VMT)*	59,978	59,911	-0.11%
Fatalities per 100 million VMT	1.34	1.27	-5.35%
Injuries per 100 million VMT	84.66	83.64	-1.20%

Arizona at a Glance – 2010

- Approximately **2.09** persons were killed each day.
- One person was killed every **11.50** hours.
- There were **137.19** persons injured every day.
- One person was injured every **10.50** minutes.
- Alcohol Related crashes accounted for **5.17%** of all crashes and **30.09%** of all fatal crashes.
- Of all alcohol related crashes, **78.23%** occurred in Urban areas and **21.77%** occurred in Rural areas, while **58.57%** of all alcohol related fatal crashes occurred in Urban areas and **41.43%** occurred in Rural areas.
- Single vehicle crashes accounted for **17.42%** of all crashes and **41.12%** of all fatal crashes.
- Of all Pedestrian crashes, **10.77%** were fatal while **0.99%** of Pedalcycle crashes were fatal.
- Crashes which occurred during daylight hours (6:00 a.m. to 6:00 p.m.) accounted for **73.6%** of all crashes.
- Motor vehicle crashes resulted in **\$2.668** billion in economic losses to Arizona.
- Children age 14 and younger accounted for **31** fatalities and **3,881** injuries in motor vehicle crashes.

The Nation In 2010

The population of the United States was estimated at **308,745,538**.

Estimated vehicle miles traveled totaled * **billion** miles.

An estimated * persons were killed in motor vehicle crashes in the United States.

*Note: This data was not available at the time of publication.

Table 1 - 2

Licensed Drivers, Motor Vehicle Registration and Crash History in Arizona

Calendar Year	Total Crashes	Fatal Crashes	Injury Crashes	Property Damage Only Crashes	Total Persons Killed	Total Persons Injured	Total Licensed Drivers	Total Registered Vehicles
2006	143,503	1,126	45,395	96,982	1,301	70,013	4,091,789	4,748,957
2007	141,192	952	43,559	96,681	1,071	66,060	4,212,393	4,848,162
2008	120,554	843	37,514	82,197	938	56,537	4,360,711	4,842,188
2009	107,094	709	33,482	72,903	806	50,776	4,434,719	4,787,350
2010	106,177	698	33,195	72,284	762	50,110	4,537,653	4,805,904

Table 1 - 3

Historical Trends – Arizona and the United States

Calendar Year	U.S. Fatality Rate	Arizona Fatality Rate	Arizona Traffic Fatalities	Estimated Motor Vehicle Miles Traveled	Arizona Fatal Crash Rate
2006	1.42	2.08	1,301	62,486	1.80
2007	1.36	1.70	1,071	62,962	1.51
2008	1.26	1.52	938	61,628	1.37
2009	1.13	1.34	806	59,978	1.18
2010	*	1.27	762	59,911	1.17

Vehicle miles traveled are shown in million miles and rates per 100 million miles

*Note: The U.S. Fatality Rate was not available at the time of publication.

**Any data not included at this time will be updated as it becomes available.

Section 1: – Highlights and Historical Trends

Statewide Economic Loss Due to Motor Vehicle Crashes

Fatalities	\$1,002,639,600
Incapacitating Injuries	\$318,117,600
Non-Incapacitating Injuries	\$385,888,950
Possible Injuries	\$357,116,280
Property Damage Only	\$604,583,376
TOTAL	\$2,668,345,806

Table 1 - 4

Estimated Economic Loss by County

County	Cost of Traffic Crashes			
	Fatalities	Injuries	PDO	Total
Apache	\$ 47,368,800	\$ 7,436,412	\$ 2,818,668	\$ 57,623,880
Cochise	\$ 30,263,400	\$ 16,592,340	\$ 9,693,876	\$ 56,549,616
Coconino	\$ 60,526,800	\$ 31,301,760	\$ 23,636,664	\$ 115,465,224
Gila	\$ 18,421,200	\$ 9,703,566	\$ 4,449,648	\$ 32,574,414
Graham	\$ 6,579,000	\$ 2,873,850	\$ 1,589,160	\$ 11,042,010
Greenlee	\$ 5,263,200	\$ 1,395,870	\$ 276,012	\$ 6,935,082
La Paz	\$ 9,210,600	\$ 6,929,166	\$ 2,074,272	\$ 18,214,038
Maricopa	\$ 410,529,600	\$ 647,126,862	\$ 392,305,056	\$ 1,449,961,518
Mohave	\$ 63,158,400	\$ 42,665,784	\$ 16,276,344	\$ 122,100,528
Navajo	\$ 42,105,600	\$ 13,822,836	\$ 6,774,840	\$ 62,703,276
Pima	\$ 139,474,800	\$ 168,695,352	\$ 87,027,420	\$ 395,197,572
Pinal	\$ 82,895,400	\$ 44,642,442	\$ 20,600,532	\$ 148,138,374
Santa Cruz	\$ 9,210,600	\$ 5,499,330	\$ 3,855,804	\$ 18,565,734
Yavapai	\$ 57,895,200	\$ 35,220,702	\$ 17,422,212	\$ 110,538,114
Yuma	\$ 19,737,000	\$ 27,216,558	\$ 15,782,868	\$ 62,736,426
TOTALS	\$ 1,002,639,600	\$ 1,061,122,830	\$ 604,583,376	\$ 2,668,345,806

NOTE: Cost estimates are based on a 2% increase of the 2009 National Safety Council estimates of the average cost of motor vehicle crashes, deaths, and injuries. These costs are an estimate of wage and productivity losses, medical expenses, administrative expenses, motor vehicle damage, and employer costs. A description of the National Safety Council's current cost estimating procedures may be found in the Technical Appendix of *Injury Facts*[®]. Effective with the 1993 bulletin, the Council extensively revised its cost estimating procedures.

Table 1 - 5

Average Economic Cost per Incident

1.	Fatality	\$1,315,800
2.	Incapacitating Injury	\$69,156
3.	Non-Incapacitating Injury	\$22,338
4.	Possible Injury	\$12,648
5.	Property Damage Only	\$8,364

Traffic Crashes in Arizona by Year

Chart 1 - 1
Total Crashes

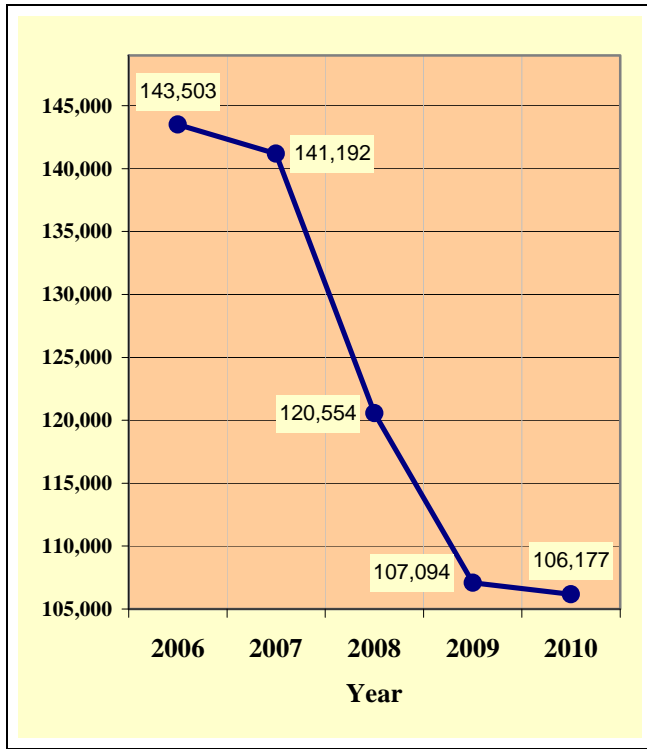


Chart 1 - 2
Fatal Crashes

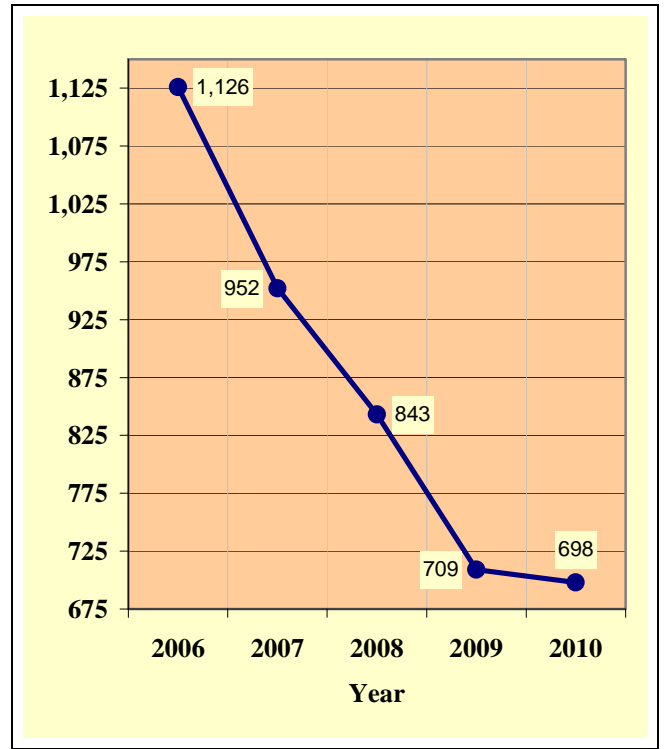


Chart 1 - 3
Injury Crashes

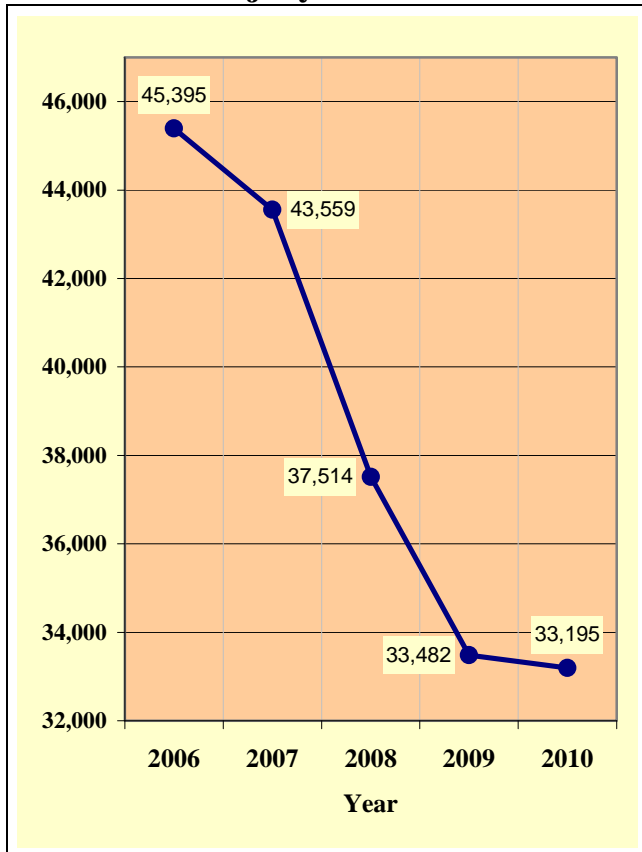
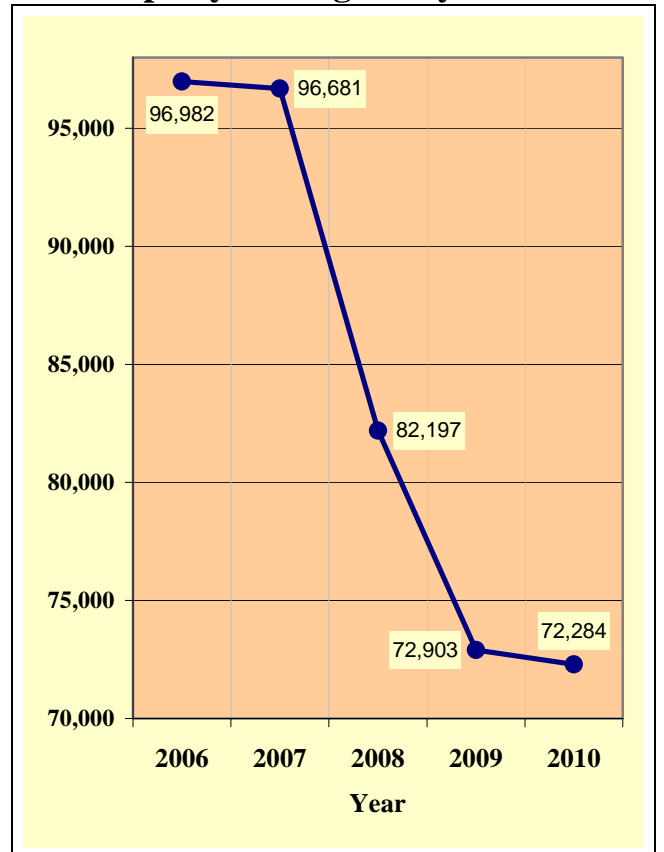


Chart 1 - 4
Property Damage Only Crashes



Section 1: – Highlights and Historical Trends

**Table 1 - 6
Victims of Motor Vehicle Crashes**

Age of Victim	Persons Killed			Persons Injured			
	Total	Male	Female	Total	Male	Female	Gender Unknown
0-4	13	7	6	1,012	527	485	0
5-9	6	5	1	1,263	621	642	0
10-14	12	7	5	1,606	779	827	0
15-19	45	37	8	5,652	2,597	3,055	0
20-24	75	61	14	6,649	3,175	3,474	0
25-34	135	93	42	9,259	4,391	4,868	0
35-44	109	79	30	7,371	3,499	3,872	0
45-54	108	72	36	6,961	3,326	3,635	0
55-64	117	78	39	5,094	2,388	2,706	0
65-74	64	36	28	2,655	1,239	1,416	0
75 & Older	77	44	33	1,700	774	926	0
Unknown	1	0	1	888	362	386	140
TOTAL	762	519	243	50,110	23,678	26,292	140

**Table 1 - 7
Arizona’s 2010 Estimated Population**

This data was not available at the time of publication.

(Source: Arizona Department of Health Services, Health Status and Vital Statistics Section.)

**Table 1 - 8
Victims of Motor Vehicle Crashes (Arizona Residents Only)***

This data was not available at the time of publication.

(Source: Arizona Department of Health Services, Health Status and Vital Statistics Section.)

Section 1: – Highlights and Historical Trends

Chart 1 - 5

Vehicle Miles Traveled

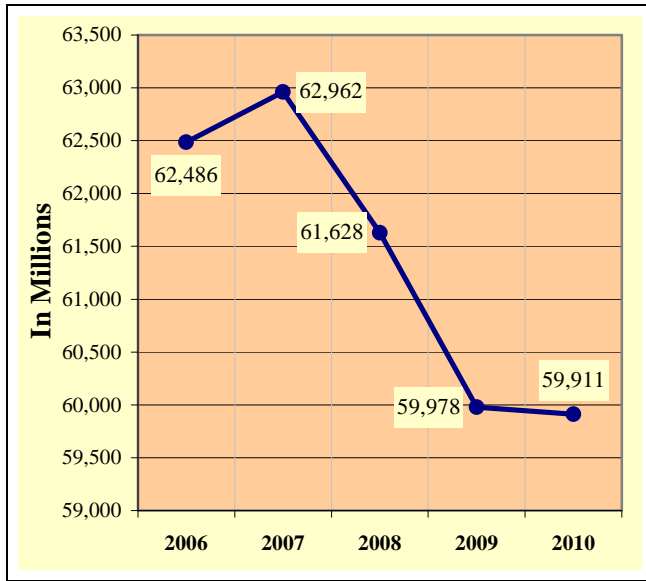
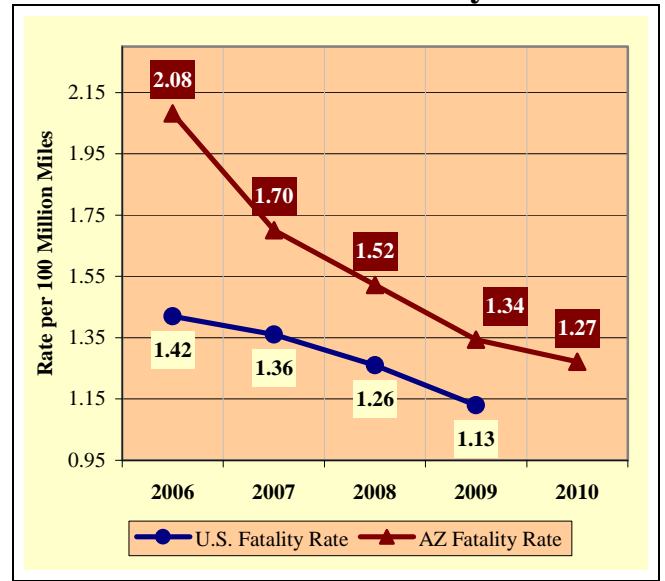


Chart 1 - 6

Arizona vs. U.S. Fatality Rate



Source: ADOT – Multimodal Planning Division – Data Bureau Note: The U.S. Fatality Rate was not available at the time of publication.

Chart 1 - 7

Traffic Fatalities by Geographic Region

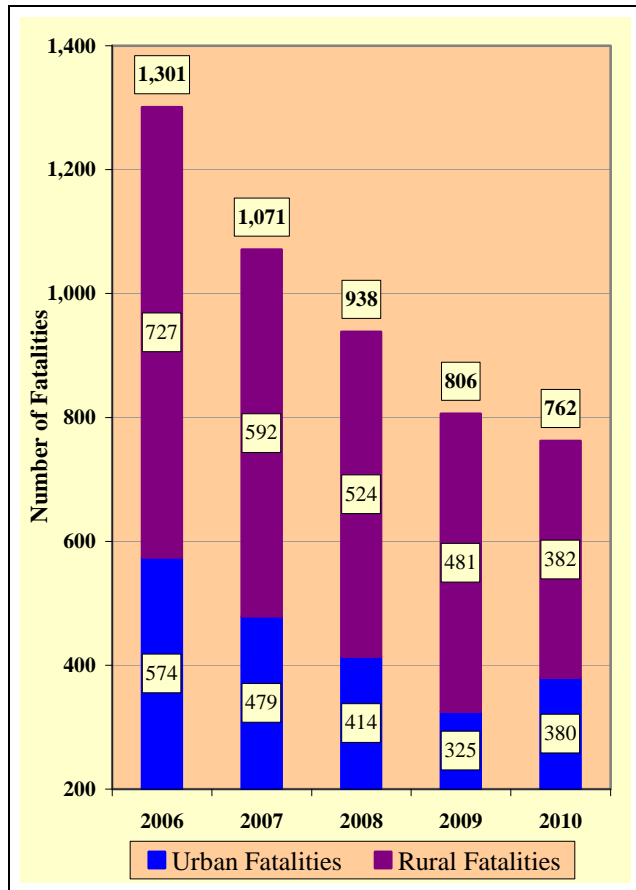
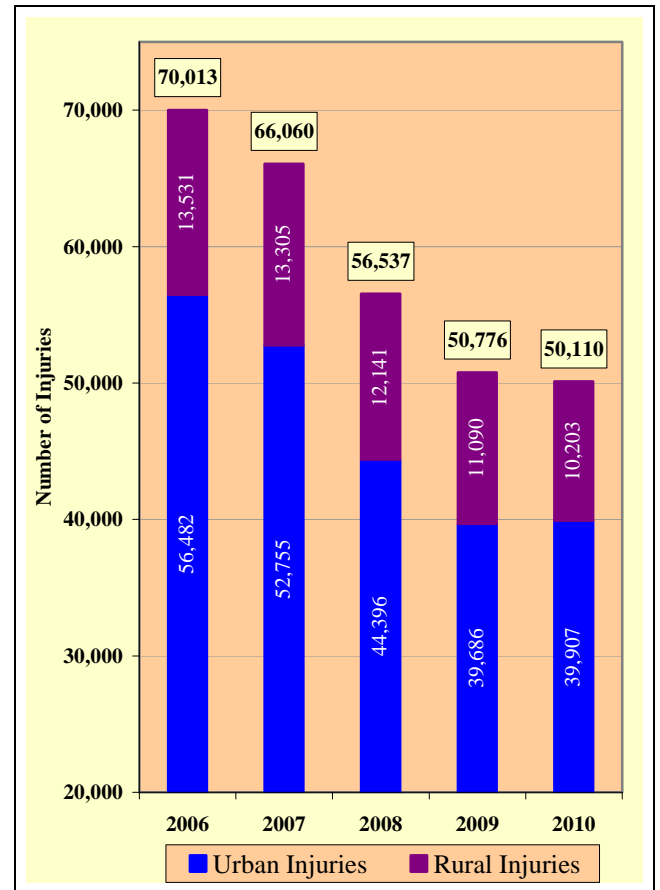


Chart 1 - 8

Traffic Injuries by Geographic Region



Section 1: – Highlights and Historical Trends

Table 1 - 9

Holiday Crash Statistics

Holidays such as Memorial Day, Labor Day, and Thanksgiving are regarded as three or four day weekend holidays for statistical purposes. Holidays such as Christmas, New Year's Day, and the Fourth of July are celebrated on specific dates; which make the holiday period range from two to five days in length.

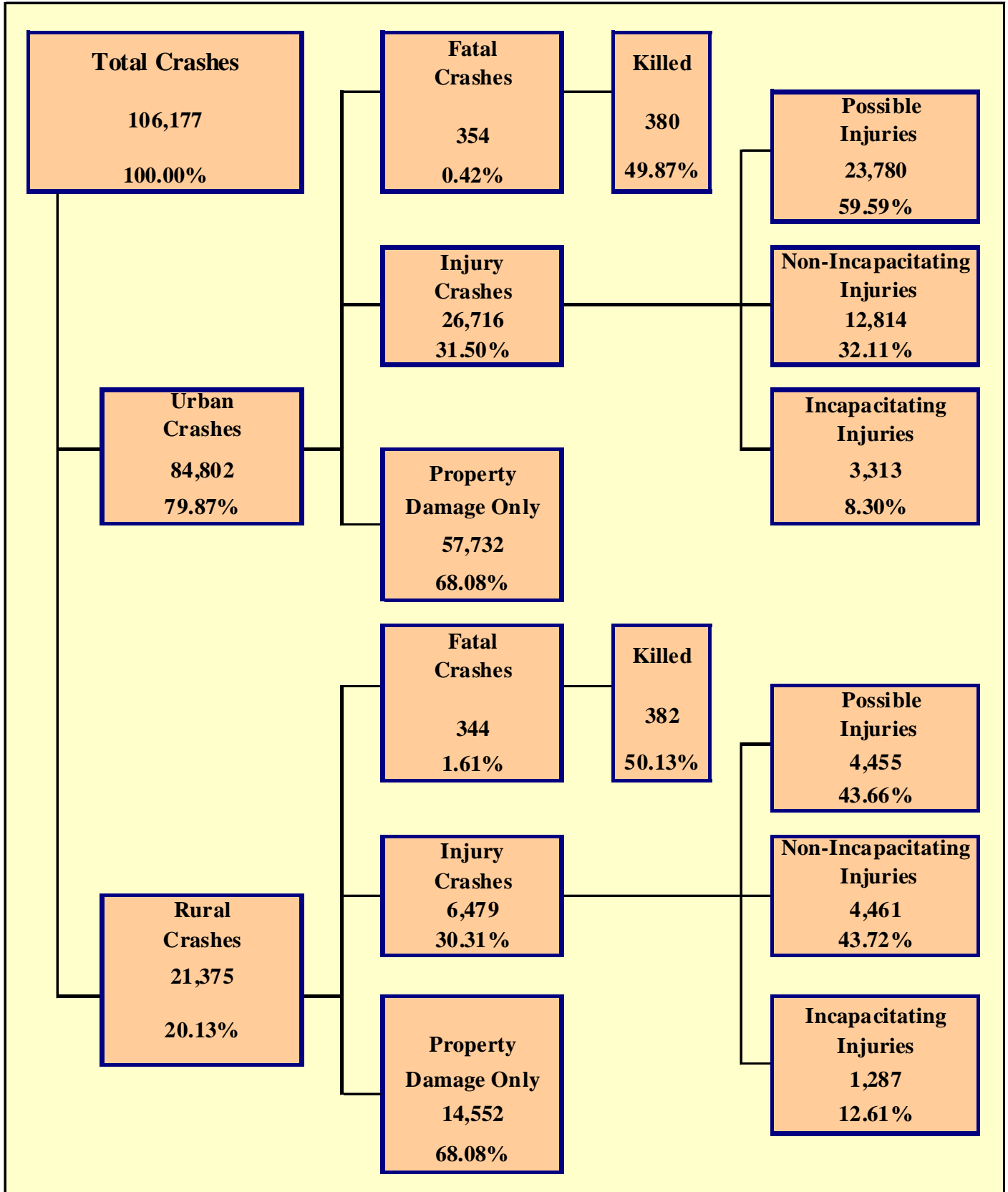
Holiday fatality statistics are based on fatal crashes occurring from 6:00 p.m. on the last working day prior to the holiday through 5:59 a.m. the day following the holiday period. Example: Thanksgiving fatalities are counted from Wednesday evening at 6:00 p.m. through 5:59 a.m. of the following Monday.

2010 Holidays	Beginning at 6:00 p.m.	Ending at 5:59 a.m.	Number of Days	Fatal Crashes	Persons Killed	Alcohol Related Fatal Crashes	Alcohol Related Fatalities
New Year's Day	Thursday	Monday	4	9	10	3	3
	12/31/2009	1/4/2010					
Memorial Day	Friday	Tuesday	4	8	8	3	3
	5/28/2010	6/1/2010					
July 4th	Friday	Tuesday	4	14	16	6	7
	7/2/2010	7/6/2010					
Labor Day	Friday	Tuesday	4	9	11	2	2
	9/3/2010	9/7/2010					
Thanksgiving Day	Wednesday	Monday	5	12	13	4	4
	11/24/2010	11/29/2010					
Christmas Day	Thursday	Monday	4	9	10	3	3
	12/23/2010	12/27/2010					

Fatal Crashes by Year	New Year's Day	Memorial Day	July 4th	Labor Day	Thanksgiving	Christmas Day	Total
2006	26	12	22	17	13	13	103
2007	9	7	1	10	14	9	50
2008	10	14	13	14	5	2	58
2009	10	6	7	5	11	7	46
2010	9	8	14	9	12	9	61

Persons Killed	New Year's Day	Memorial Day	July 4th	Labor Day	Thanksgiving	Christmas Day	Total
2006	28	13	24	24	15	13	117
2007	9	7	1	11	16	12	56
2008	11	17	15	19	5	2	69
2009	11	7	7	7	12	7	51
2010	10	8	16	11	13	10	68

Number of Days	New Year's Day	Memorial Day	July 4th	Labor Day	Thanksgiving	Christmas Day	Total
2006	4	4	5	4	5	4	26
2007	4	4	2	4	5	5	24
2008	5	4	4	4	5	5	27
2009	5	4	4	4	5	4	26
2010	4	4	4	4	5	4	25



Section 2: – Geographic Location

Fatal Crashes in Arizona (698) accounted for 0.66% of all crashes, Injury Crashes (33,195) accounted for 31.26%, and Property Damage Only (PDO) Crashes (72,284) accounted for 68.08%.

Table 2 - 1

Crash Severity by First Harmful Event Statewide

First Harmful Event Type	Number of Crashes				Number of Persons	
	Total	Fatal	Injury	PDO	Killed	Injured
Collision with Motor Vehicle in Transport	76,902	219	22,939	53,744	254	36,895
Overturning	2,763	125	1,658	980	145	2,573
Collision with Pedestrian	1,346	152	1,091	103	152	1,169
Collision with Pedalcyclist	1,892	19	1,551	322	19	1,589
Collision with Animal	1,561	1	162	1,398	1	204
Collision with Fixed Object	11,311	135	3,313	7,863	142	4,246
Collision with Non-fixed Object*	3,769	8	413	3,348	8	545
Vehicle Fire or Explosion	314	2	19	293	2	30
Other Non-collision**	2,113	23	699	1,391	23	869
Unknown	4,206	14	1,350	2,842	16	1,990
TOTAL	106,177	698	33,195	72,284	762	50,110
*Includes Collision with Parked Vehicles, Trains, Railway Vehicles, and Work Zone Equipment						
**Includes Vehicle Immersion, Jackknife, and Cargo Loss or Shift						

Table 2 - 2

Crashes by County

County	Number of Crashes				Number of Persons	
	Total	Fatal	Injury	PDO	Killed	Injured
Apache	532	31	164	337	36	303
Cochise	1,630	19	452	1,159	23	684
Coconino	3,761	40	895	2,826	46	1,357
Gila	800	13	255	532	14	386
Graham	277	5	82	190	5	139
Greenlee	70	4	33	33	4	45
La Paz	398	7	143	248	7	262
Maricopa	68,579	291	21,384	46,904	312	32,144
Mohave	3,007	43	1,018	1,946	48	1,558
Navajo	1,205	31	364	810	32	571
Pima	15,764	101	5,258	10,405	106	7,831
Pinal	3,624	54	1,107	2,463	63	1,828
Santa Cruz	636	7	168	461	7	259
Yavapai	3,118	38	997	2,083	44	1,452
Yuma	2,776	14	875	1,887	15	1,291
TOTAL	106,177	698	33,195	72,284	762	50,110

Table 2 - 3

Crash Severity by First Harmful Event in Urban Areas

First Harmful Event Type	Number of Crashes				Number of Persons	
	Total	Fatal	Injury	PDO	Killed	Injured
Collision with Motor Vehicle in Transport	65,741	129	19,709	45,903	145	31,351
Overturning	707	22	482	203	27	672
Collision with Pedestrian	1,184	99	998	87	99	1,069
Collision with Pedalcyclist	1,754	17	1,440	297	17	1,477
Collision with Animal	182	0	22	160	0	24
Collision with Fixed Object	7,399	71	2,101	5,227	76	2,618
Collision with Non-fixed Object*	2,771	5	294	2,472	5	364
Vehicle Fire or Explosion	114	0	8	106	0	11
Other Non-collision**	1,075	7	398	670	7	460
Unknown	3,875	4	1,264	2,607	4	1,861
TOTAL	84,802	354	26,716	57,732	380	39,907
*Includes Collision with Parked Vehicles, Trains, Railway Vehicles, and Work Zone Equipment						
**Includes Vehicle Immersion, Jackknife, and Cargo Loss or Shift						

Table 2 - 4

Crash Severity by First Harmful Event in Rural Areas

First Harmful Event Type	Number of Crashes				Number of Persons	
	Total	Fatal	Injury	PDO	Killed	Injured
Collision with Motor Vehicle in Transport	11,161	90	3,230	7,841	109	5,544
Overturning	2,056	103	1,176	777	118	1,901
Collision with Pedestrian	162	53	93	16	53	100
Collision with Pedalcyclist	138	2	111	25	2	112
Collision with Animal	1,379	1	140	1,238	1	180
Collision with Fixed Object	3,912	64	1,212	2,636	66	1,628
Collision with Non-fixed Object*	998	3	119	876	3	181
Vehicle Fire or Explosion	200	2	11	187	2	19
Other Non-collision**	1,038	16	301	721	16	409
Unknown	331	10	86	235	12	129
TOTAL	21,375	344	6,479	14,552	382	10,203
*Includes Collision with Parked Vehicles, Trains, Railway Vehicles, and Work Zone Equipment						
**Includes Vehicle Immersion, Jackknife, and Cargo Loss or Shift						

While Urban Crashes in Arizona (84,802) accounted for 79.87% of all crashes, they accounted for 50.72% of all Fatal Crashes (354) occurring in 2010.

While Rural Crashes in Arizona (21,375) accounted for 20.13% of all crashes, they accounted for 49.28% of all Fatal Crashes (344) occurring in 2010.

Section 2: – Geographic Location

Table 2 - 5

Analysis by Jurisdiction

COUNTIES Cities	Number of Crashes				No. of Persons		Alcohol Related		
	Total	Fatal	Injury	PDO	Killed	Injured	Crashes	Killed	Injured
Apache County	474	30	153	291	35	282	40	9	45
Eagar	28	0	6	22	0	11	1	0	0
St. Johns	18	0	3	15	0	5	0	0	0
Springerville	12	1	2	9	1	5	1	1	2
TOTAL	532	31	164	337	36	303	42	10	47

Cochise County	693	16	208	469	20	324	35	2	30
Benson	89	1	25	63	1	32	2	1	1
Bisbee	4	1	1	2	1	1	0	0	0
Douglas	41	0	7	34	0	10	4	0	2
Huachuca City	7	0	2	5	0	4	1	0	1
Sierra Vista	756	1	193	562	1	284	34	1	23
Tombstone	1	0	0	1	0	0	0	0	0
Willcox	39	0	16	23	0	29	1	0	0
TOTAL	1,630	19	452	1,159	23	684	77	4	57

Coconino County	1,539	33	414	1,092	39	690	63	10	85
Flagstaff	1,909	3	413	1,493	3	587	66	2	34
Williams	97	1	19	77	1	21	2	0	0
Page	21	3	4	14	3	4	3	1	2
Sedona	195	0	45	150	0	55	10	0	7
TOTAL	3,761	40	895	2,826	46	1,357	144	13	128

Gila County	483	11	159	313	12	236	37	2	31
Globe	159	1	59	99	1	91	12	1	4
Hayden	2	1	1	0	1	1	0	0	0
Miami	13	0	4	9	0	7	1	0	1
Payson	142	0	32	110	0	51	7	0	7
Winkelman	1	0	0	1	0	0	0	0	0
TOTAL	800	13	255	532	14	386	57	3	43

Graham County	124	4	35	85	4	72	10	0	8
Pima	3	0	0	3	0	0	0	0	0
Safford	105	1	31	73	1	44	6	1	4
Thatcher	45	0	16	29	0	23	1	0	2
TOTAL	277	5	82	190	5	139	17	1	14

Greenlee County	60	4	28	28	4	40	6	1	7
Clifton	6	0	4	2	0	4	3	0	2
Duncan	4	0	1	3	0	1	1	0	0
TOTAL	70	4	33	33	4	45	10	1	9

Table 2 - 5

Analysis by Jurisdiction

COUNTIES Cities	Number of Crashes				No. of Persons		Alcohol Related		
	Total	Fatal	Injury	PDO	Killed	Injured	Crashes	Killed	Injured
La Paz County	330	6	123	201	6	231	18	2	16
Parker	33	1	8	24	1	14	1	0	0
Quartzite	35	0	12	23	0	17	3	0	3
TOTAL	398	7	143	248	7	262	22	2	19

Maricopa County	5,202	47	1,622	3,533	50	2,486	252	10	193
Avondale	1,044	0	283	761	0	421	45	0	43
Buckeye	405	4	115	286	5	185	20	1	17
Cave Creek	56	0	12	44	0	18	4	0	5
Chandler	3,515	8	1,001	2,506	8	1,404	193	5	106
El Mirage	321	2	79	240	2	113	18	0	14
Gila Bend	20	1	6	13	1	9	1	1	0
Gilbert	2,378	9	617	1,752	9	854	91	3	42
Glendale	4,821	19	1,362	3,440	20	2,039	220	3	136
Goodyear	939	3	273	663	3	408	38	0	20
Mesa	6,130	23	1,978	4,129	23	2,893	294	7	182
Paradise Valley	193	0	64	129	0	96	8	0	8
Peoria	2,238	10	655	1,573	11	957	89	3	52
Phoenix	29,062	134	9,715	19,213	149	15,050	1,457	52	957
Scottsdale	3,529	11	1,176	2,342	11	1,653	217	3	114
Surprise	1,027	6	265	756	6	433	56	1	35
Tempe	6,658	12	1,870	4,776	12	2,680	331	6	201
Tolleson	366	1	102	263	1	160	25	0	25
Wickenburg	93	0	16	77	0	23	1	0	1
Youngtown	13	0	3	10	0	4	0	0	0
Guadalupe	300	0	75	225	0	104	19	0	11
Litchfield Park	41	0	17	24	0	27	3	0	3
Queen Creek	116	0	44	72	0	73	5	0	4
Fountain Hills	97	1	29	67	1	46	8	0	4
Carefree	15	0	5	10	0	8	1	0	1
TOTAL	68,579	291	21,384	46,904	312	32,144	3,396	95	2,174

Mohave County	1,140	30	417	693	35	681	80	7	72
Kingman	537	2	192	343	2	288	31	1	29
Lake Havasu City	629	5	194	430	5	255	60	3	35
Bullhead City	683	4	210	469	4	324	63	3	39
Colorado City	18	2	5	11	2	10	2	0	1
TOTAL	3,007	43	1,018	1,946	48	1,558	236	14	176

Section 2: – Geographic Location

Table 2 - 5

Analysis by Jurisdiction

COUNTIES Cities	Number of Crashes				No. of Persons		Alcohol Related		
	Total	Fatal	Injury	PDO	Killed	Injured	Crashes	Killed	Injured
Navajo County	646	26	214	406	27	351	49	8	44
Holbrook	60	2	17	41	2	33	4	1	0
Show Low	164	0	54	110	0	78	8	0	11
Snowflake	64	0	12	52	0	15	5	0	2
Taylor	19	1	6	12	1	10	2	1	4
Winslow	134	2	27	105	2	37	19	2	5
Pinetop-Lakeside	118	0	34	84	0	47	3	0	0
TOTAL	1,205	31	364	810	32	571	90	12	66

Pima County	4,412	37	1,280	3,095	39	1,889	252	17	184
South Tucson	70	1	30	39	1	42	8	1	5
Tucson	9,720	51	3,561	6,108	54	5,315	518	18	356
Sahuarita	192	2	51	139	2	73	9	0	4
Oro Valley	454	2	134	318	2	204	9	0	5
Marana	916	8	202	706	8	308	33	1	20
TOTAL	15,764	101	5,258	10,405	106	7,831	829	37	574

Pinal County	1,726	32	535	1,159	37	933	108	7	107
Casa Grande	853	9	242	602	13	375	51	3	34
Coolidge	171	2	49	120	2	74	10	0	6
Eloy	150	2	50	98	2	86	16	1	14
Florence	81	1	23	57	1	41	4	1	0
Kearny	5	0	2	3	0	2	0	0	0
Mammoth	4	0	3	1	0	10	0	0	0
Superior	2	0	0	2	0	0	0	0	0
Apache Junction	417	6	148	263	6	220	23	3	25
Maricopa	215	2	55	158	2	87	16	0	1
TOTAL	3,624	54	1,107	2,463	63	1,828	228	15	187

Santa Cruz County	294	7	93	194	7	138	13	1	7
Nogales	342	0	75	267	0	121	18	0	16
TOTAL	636	7	168	461	7	259	31	1	23

Yavapai County	1,378	28	440	910	33	683	86	8	70
Clarkdale	1	1	0	0	1	0	1	1	0
Cottonwood	244	1	66	177	1	79	12	0	2
Jerome	6	0	0	6	0	0	0	0	0
Prescott	760	2	271	487	2	375	33	0	21
Prescott Valley	539	5	162	372	6	236	25	1	15
Chino Valley	87	0	25	62	0	35	1	0	1
Camp Verde	92	1	30	61	1	40	10	0	3
Dewey-Humboldt	11	0	3	8	0	4	0	0	0
TOTAL	3,118	38	997	2,083	44	1,452	168	10	112

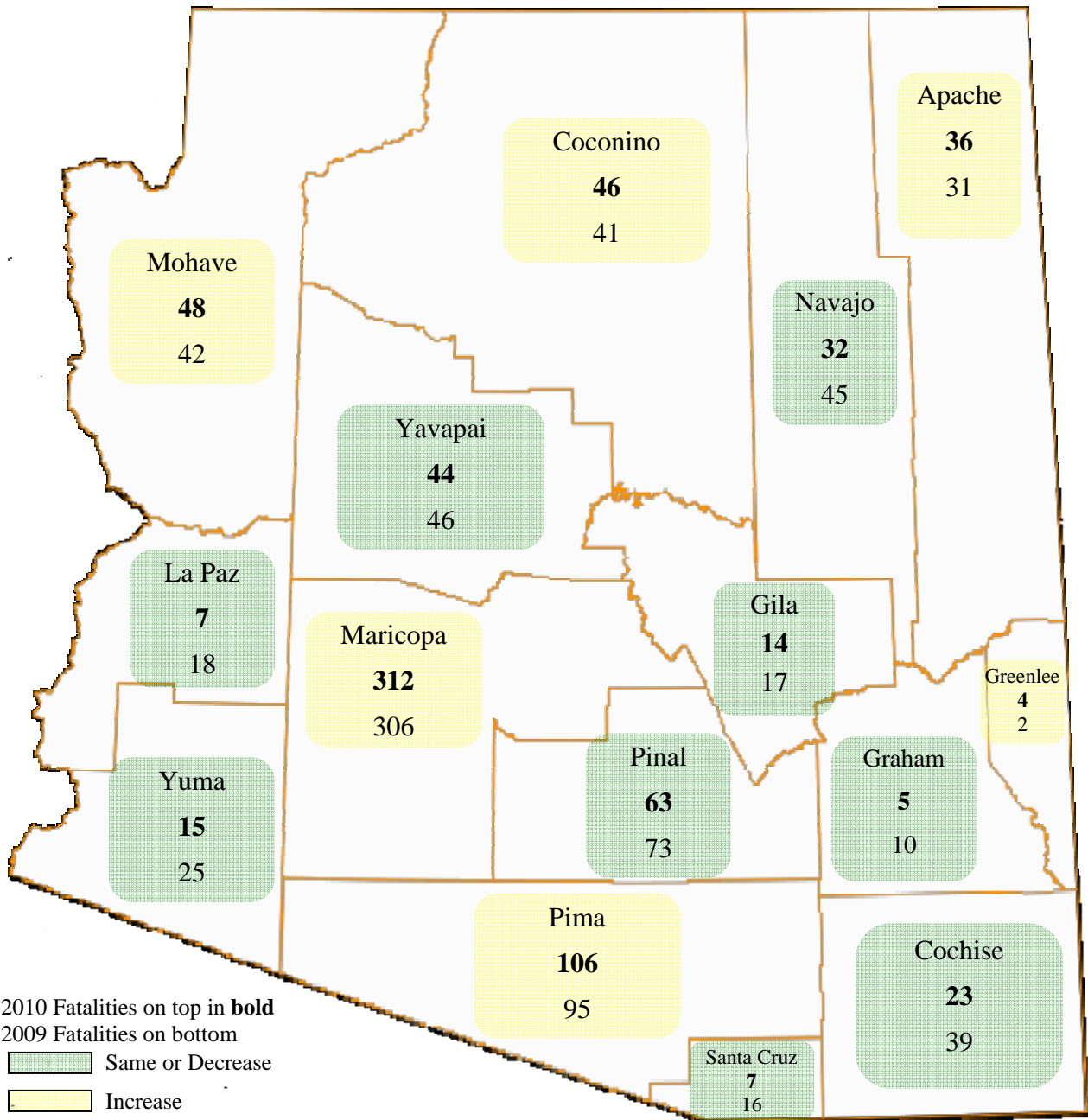
Table 2 - 5

Analysis by Jurisdiction

COUNTIES Cities	Number of Crashes				No. of Persons		Alcohol Related		
	Total	Fatal	Injury	PDO	Killed	Injured	Crashes	Killed	Injured
Yuma County	715	9	228	478	10	364	44	3	36
Somerton	26	0	5	21	0	6	2	0	1
Yuma	1,891	5	619	1,267	5	891	90	2	55
Wellton	7	0	2	5	0	4	1	0	2
San Luis	137	0	21	116	0	26	5	0	1
TOTAL	2,776	14	875	1,887	15	1,291	142	5	95

Some individual city data may be incomplete due to lack of timely reporting.
Totals within city and town jurisdictions include all state highways.

Total Fatalities by County for 2009 and 2010



Section 2: – Geographic Location

Chart 2 - 1

Urban and Rural Crashes by Day of Week

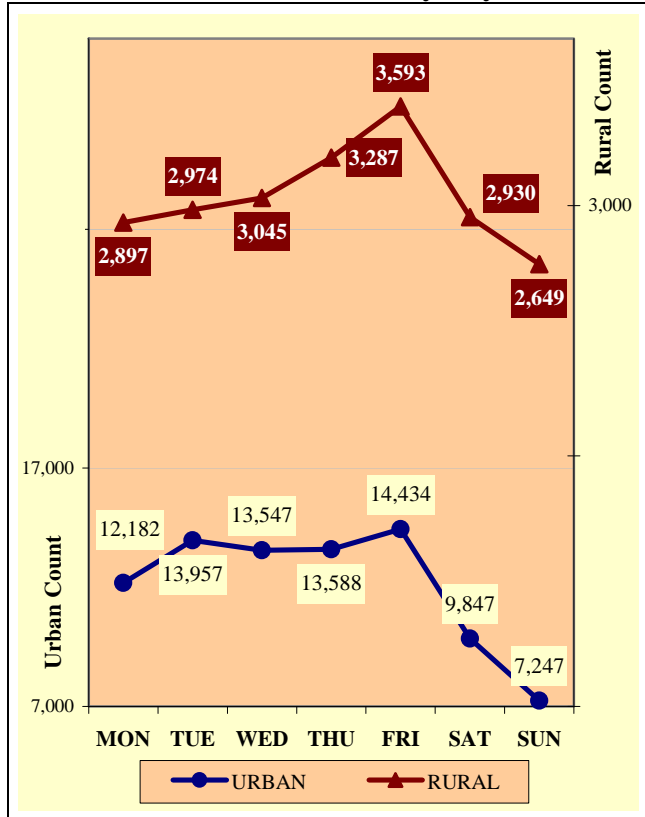


Chart 2 - 2

Urban and Rural Fatal Crashes by Day of Week

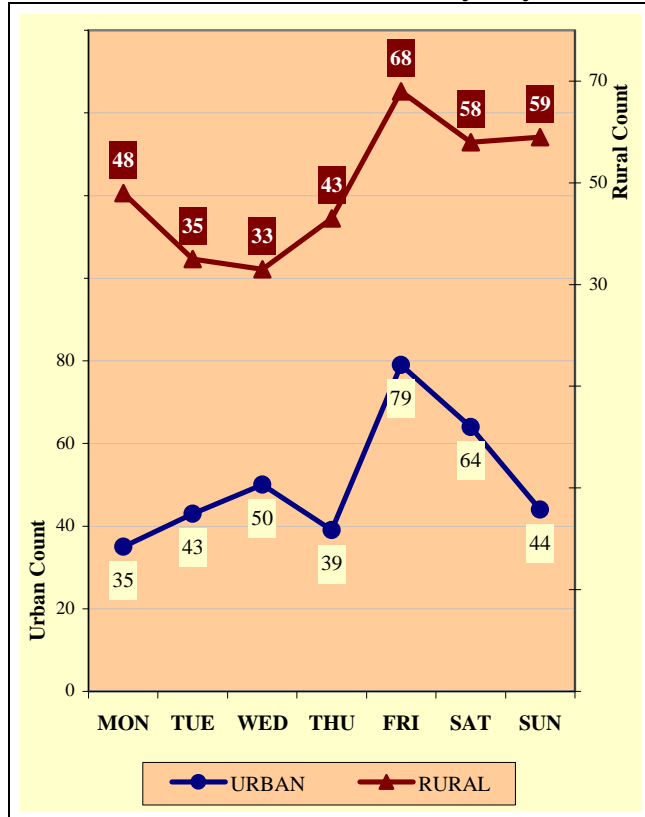
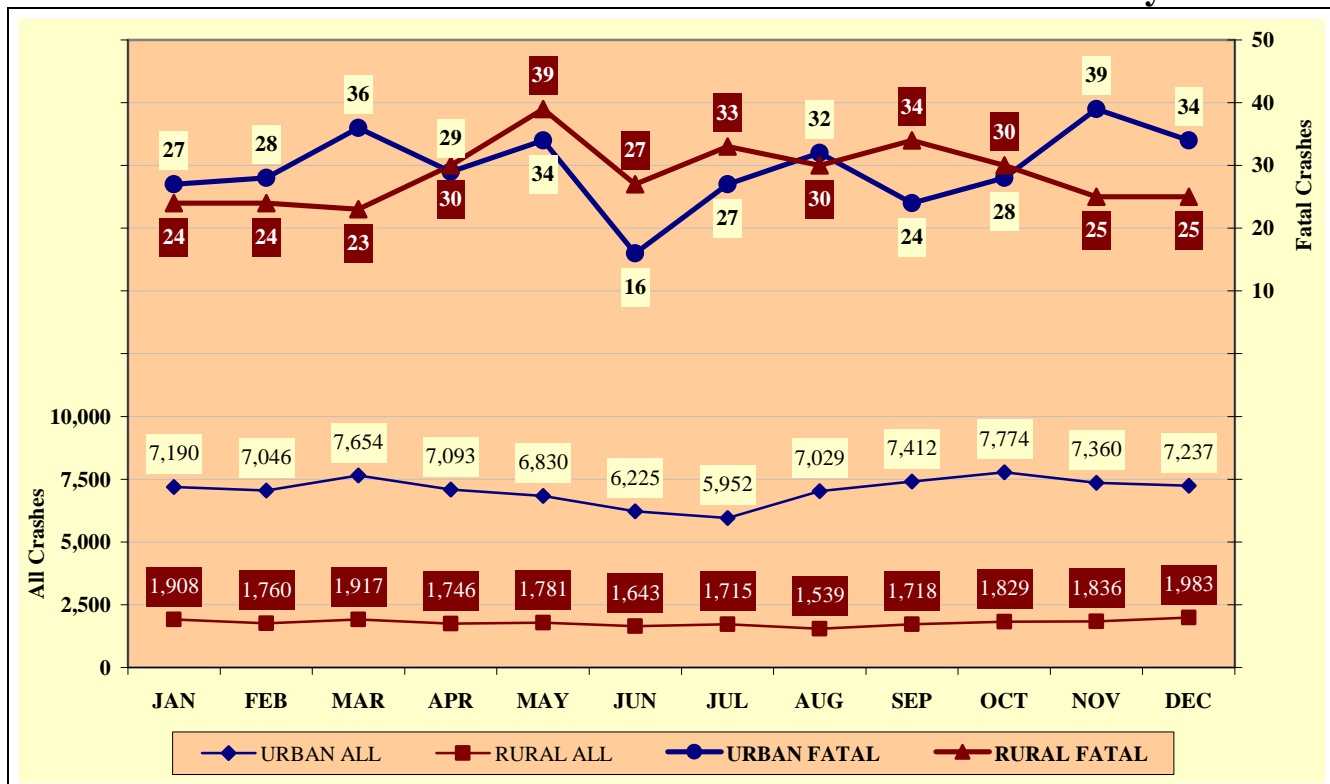
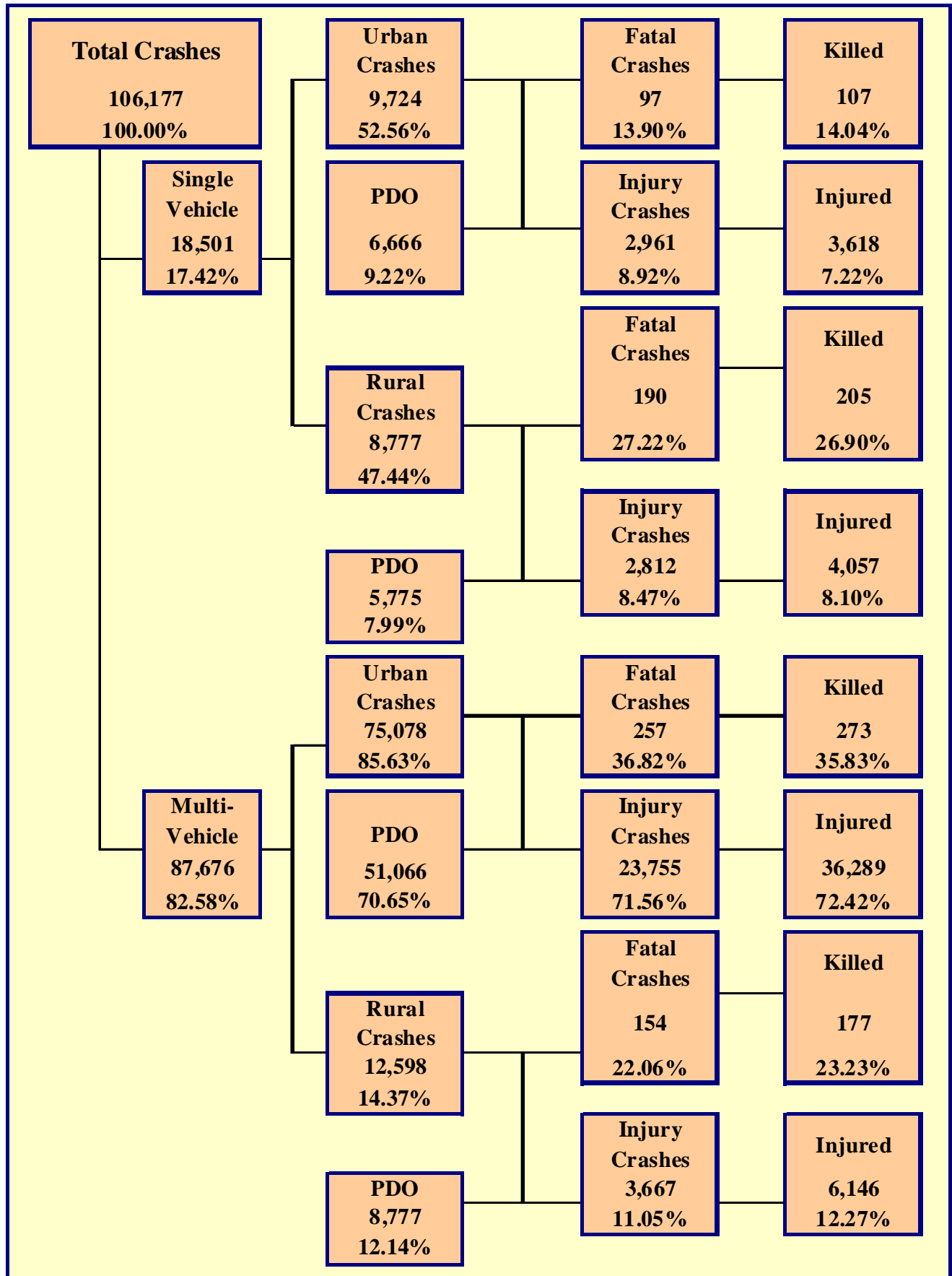


Chart 2 - 3

All Urban and Rural Crashes vs. Urban and Rural Fatal Crashes by Month





Section 3: – Crash Descriptions

Table 3 - 1

Manner of Collision in Multi-Vehicle Crashes

Manner of Collision Type	Number of Crashes							
	Total	Percent of Total Crashes	Fatal	Percent of Fatal Crashes	Injury	Percent of Injury Crashes	PDO	Percent of PDO Crashes
Angle	15,815	18.04%	81	19.71%	6,503	23.71%	9,231	15.43%
Left Turn	8,670	9.89%	40	9.73%	3,670	13.38%	4,960	8.29%
Read End	40,371	46.05%	54	13.14%	12,058	43.97%	28,259	47.22%
Head-On	1,940	2.21%	47	11.44%	988	3.60%	905	1.51%
Sideswipe (same)	12,949	14.77%	19	4.62%	1,825	6.66%	11,105	18.56%
Sideswipe (opposite)	1,352	1.54%	6	1.46%	332	1.21%	1,014	1.69%
Rear to Side	1,102	1.26%	0	0.00%	83	0.30%	1,019	1.70%
Rear to Rear	353	0.40%	0	0.00%	62	0.23%	291	0.49%
Other	4,129	4.71%	144	35.04%	1,647	6.01%	2,338	3.91%
Unknown	995	1.13%	20	4.87%	254	0.93%	721	1.20%
TOTAL	87,676	100.00%	411	100.00%	27,422	100.00%	59,843	100.00%

Table 3 - 2

Lighting Conditions

Type of Lighting Conditions	Number of Crashes				Number of Persons	
	Total	Fatal	Injury	PDO	Killed	Injured
Daylight	77,007	316	24,032	52,659	345	36,082
Dawn	1,756	16	541	1,199	19	788
Dusk	3,248	21	1,029	2,198	22	1,573
Dark - Lighted	16,615	118	5,433	11,064	123	8,283
Dark - Not Lighted	6,396	132	1,896	4,368	148	2,933
Dark - Unknown Lighting	1,155	95	264	796	105	451
TOTAL	106,177	698	33,195	72,284	762	50,110

Table 3 - 3

Weather Conditions

Type of Weather Conditions	Number of Crashes				Number of Persons	
	Total	Fatal	Injury	PDO	Killed	Injured
Clear	90,124	493	28,497	61,134	534	42,892
Cloudy	9,282	64	2,931	6,287	69	4,502
Sleet/Hail	155	3	49	103	3	86
Rain	4,557	20	1,328	3,209	23	1,980
Snow	901	1	163	737	2	253
Severe Crosswinds	94	1	31	62	1	58
Blowing Sand, Soil, Dirt	48	2	13	33	2	41
Fog, Smog, Smoke	41	1	11	29	2	15
Blowing Snow	47	1	7	39	1	7
Other	55	0	10	45	0	13
Unknown	873	112	155	606	125	263
TOTAL	106,177	698	33,195	72,284	762	50,110

Table 3 - 4

Road Surface Conditions

Type of Road Surface Condition	Number of Drivers				Number of Persons	
	Total	In Fatal Crashes	In Injury Crashes	In PDO Crashes	Killed	Injured
Dry	185,478	821	59,062	125,595	586	46,213
Wet	11,658	35	3,459	8,164	29	2,780
Snow	1,089	5	171	913	5	171
Slush	212	1	57	154	1	71
Ice/Frost	725	8	168	549	8	192
Water (standing or moving)	115	2	35	78	2	30
Sand	57	0	25	32	0	23
Mud, Dirt, Gravel	538	8	184	346	7	255
Oil	23	2	7	14	1	7
Other	120	3	40	77	1	29
Unknown	1,921	129	376	1,416	122	339
TOTAL	201,936	1,014	63,584	137,338	762	50,110

Table 3 - 5

Roadway Grade

Type of Roadway Grade	Number of Drivers				Number of Persons	
	Total	In Fatal Crashes	In Injury Crashes	In PDO Crashes	Killed	Injured
Level	176,092	681	55,101	120,310	498	42,782
Downhill	8,599	75	2,883	5,641	60	2,701
Uphill	6,671	60	2,211	4,400	49	1,919
Hillcrest	392	12	140	240	9	123
Sag/Dip/Bottom	193	3	50	140	3	56
Unknown	9,989	183	3,199	6,607	143	2,529
TOTAL	201,936	1,014	63,584	137,338	762	50,110

Table 3 - 6

Roadway Alignment

Type of Roadway Alignment	Number of Drivers				Number of Persons	
	Total	In Fatal Crashes	In Injury Crashes	In PDO Crashes	Killed	Injured
Straight	164,270	667	51,056	112,547	475	39,905
Curve Left	5,337	73	1,766	3,498	66	1,815
Curve Right	5,510	62	1,598	3,850	57	1,560
Unknown	26,819	212	9,164	17,443	164	6,830
TOTAL	201,936	1,014	63,584	137,338	762	50,110

Section 3: – Crash Descriptions

Chart 3 - 1

All Crashes vs. Fatal Crashes by Time of Day - Weekdays

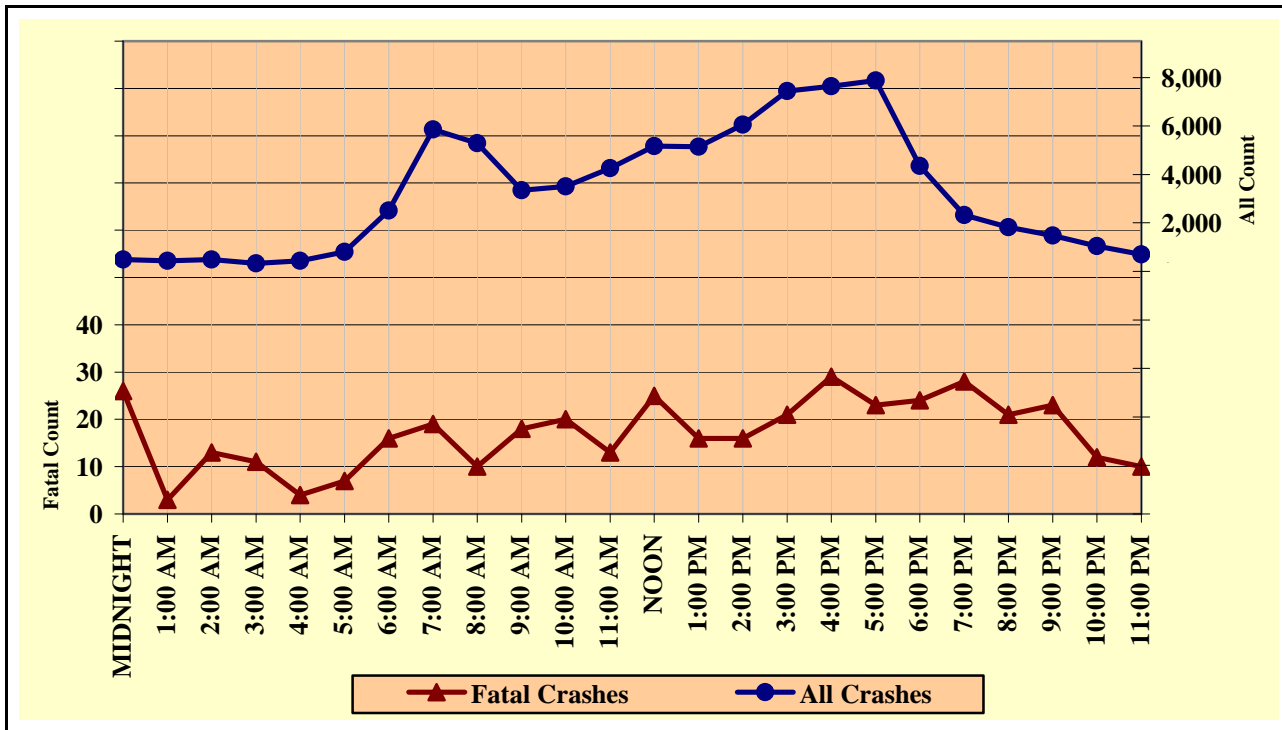


Chart 3 - 2

All Crashes vs. Fatal Crashes by Time of Day - Weekends

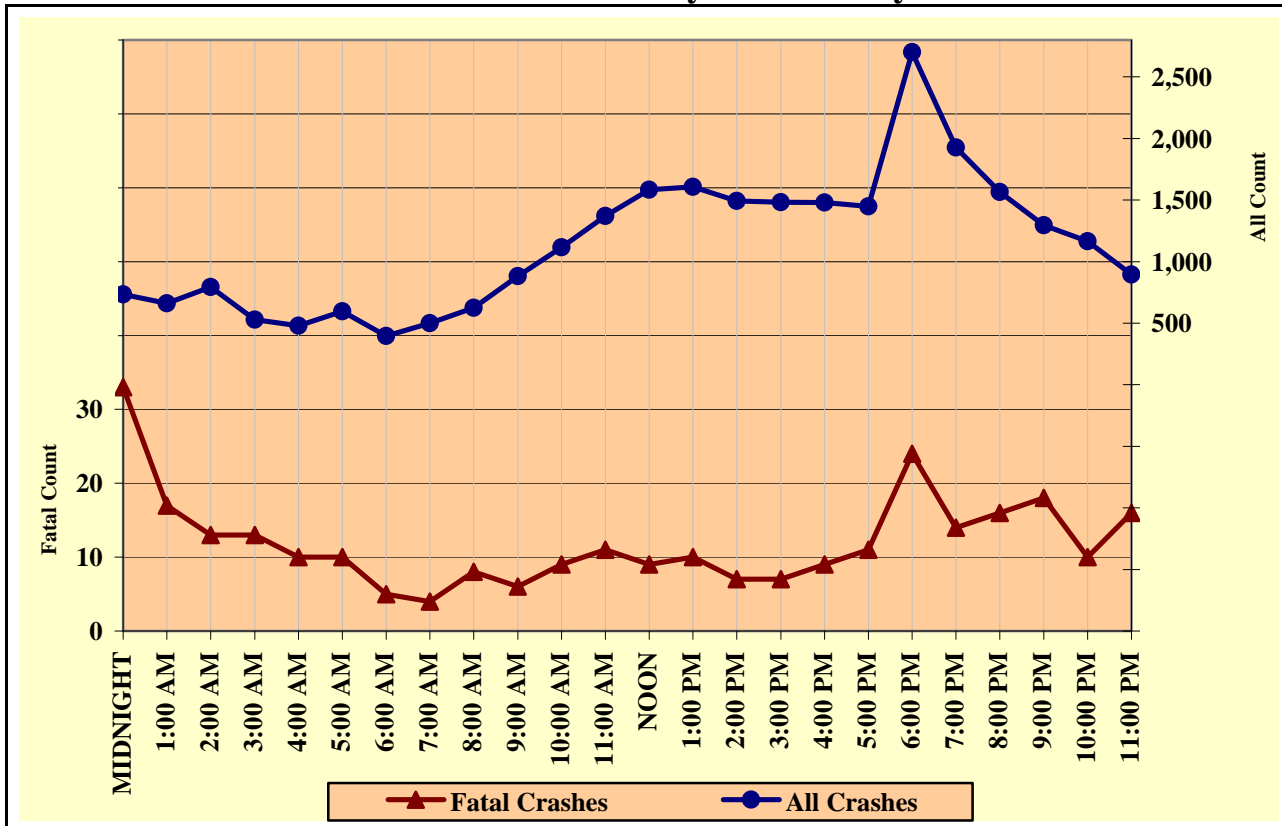


Chart 3 - 3

Crashes by Day of Week

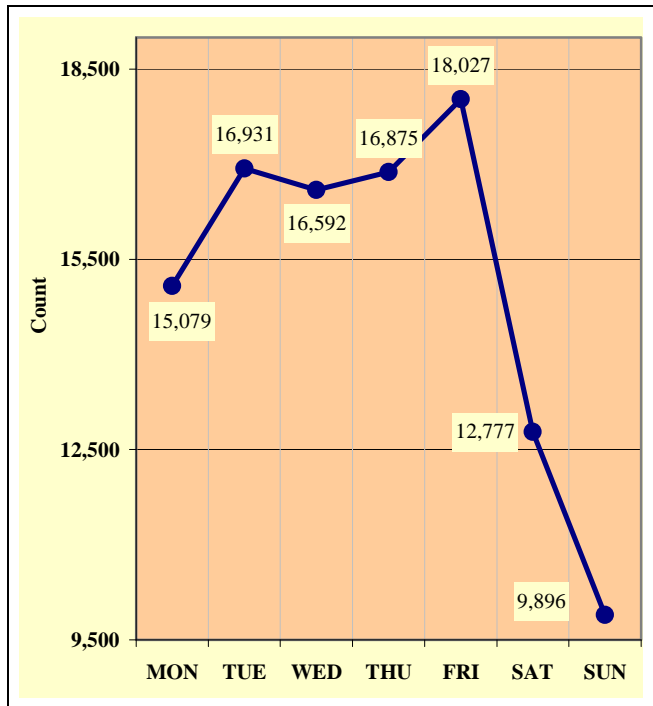


Chart 3 - 4

Fatal Crashes by Day of Week

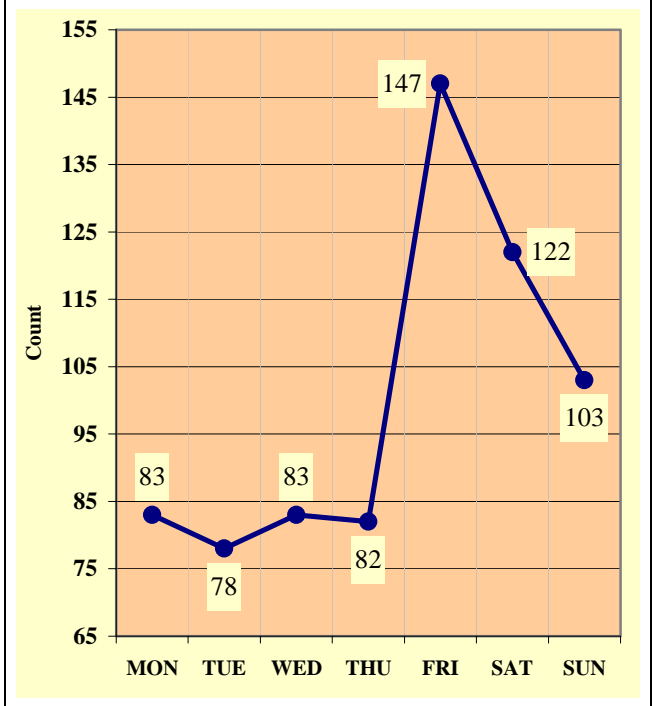
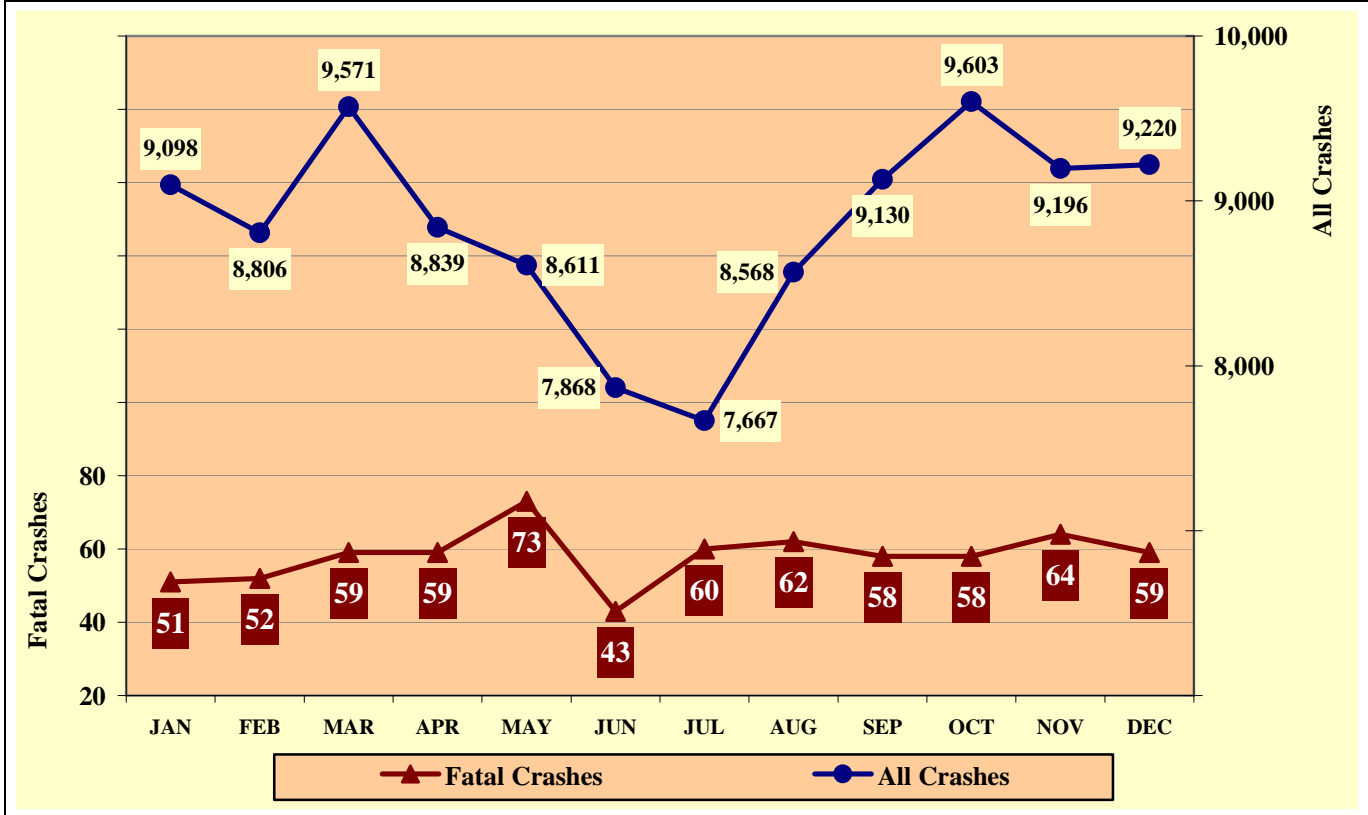


Chart 3 - 5

All Crashes vs. Fatal Crashes by Month



Section 3: – Crash Descriptions

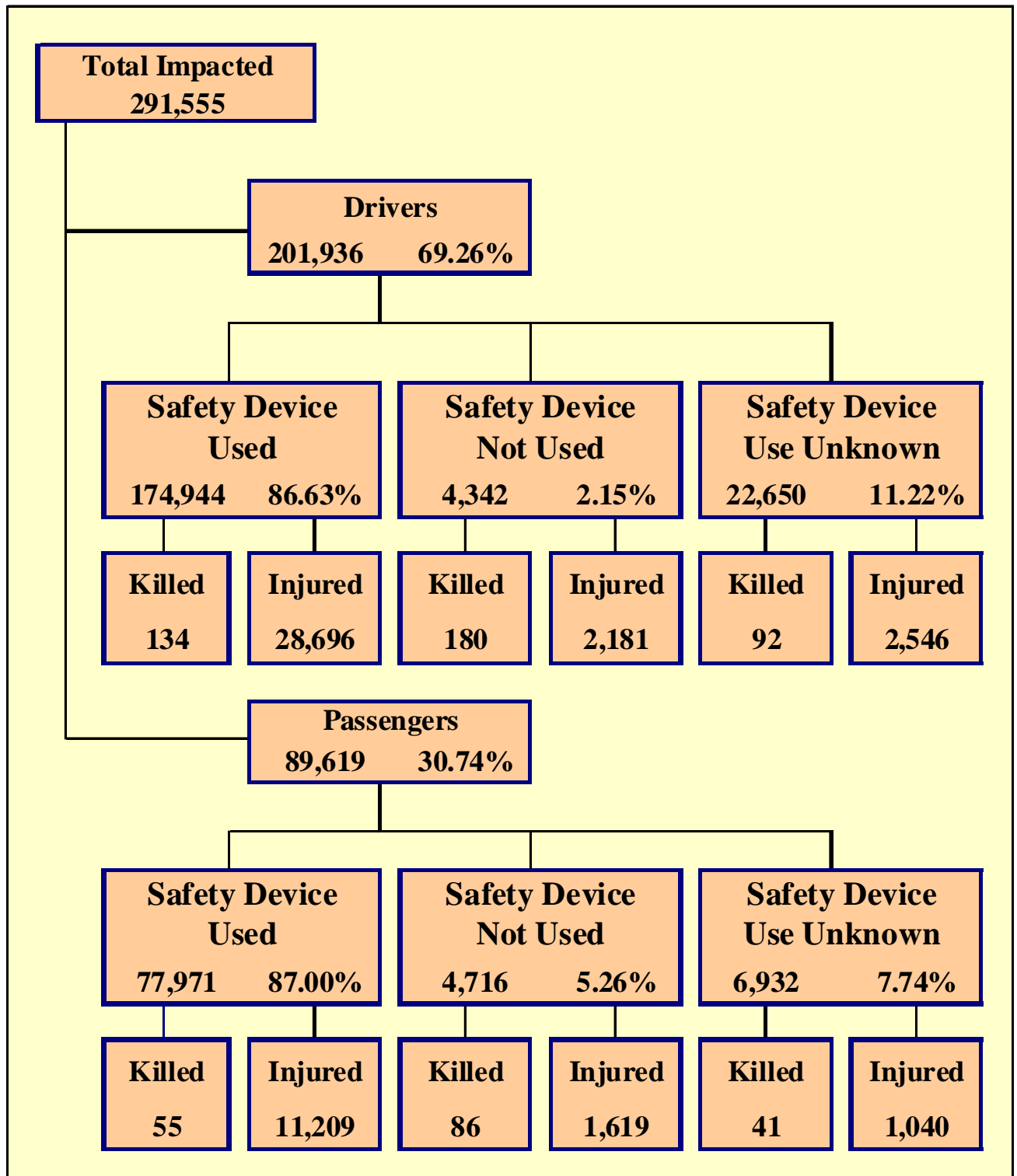
Table 3 - 7

Crashes by Hour and Day of Week

Hour Beginning	Total Crashes		Monday		Tuesday		Wednesday		Thursday		Friday		Saturday		Sunday		Weekdays		Weekends	
	All	Fatal	All	Fatal	All	Fatal	All	Fatal	All	Fatal	All	Fatal	All	Fatal	All	Fatal	All	Fatal	All	Fatal
MIDNIGHT	1,224	59	135	8	98	5	105	3	127	8	161	10	292	12	306	13	491	26	733	33
1:00 AM	1,099	20	108	2	90	1	94	1	110	1	145	0	254	7	298	8	439	3	660	17
2:00 AM	1,278	26	102	1	76	2	96	0	131	3	181	8	318	7	374	5	484	13	794	13
3:00 AM	864	24	80	1	60	0	69	0	97	5	109	6	212	7	237	5	335	11	529	13
4:00 AM	916	14	92	2	90	1	101	1	125	0	121	2	188	3	199	5	437	4	479	10
5:00 AM	1,395	17	189	3	218	2	185	1	206	1	191	3	207	4	199	3	800	7	595	10
6:00 AM	2,910	21	472	1	564	6	513	2	528	3	436	4	213	4	184	1	2,513	16	397	5
7:00 AM	6,365	23	1,082	4	1,251	2	1,214	3	1,310	5	1,008	5	308	3	192	1	5,865	19	500	4
8:00 AM	5,921	18	1,009	3	1,219	1	1,055	1	1,106	1	908	4	382	5	242	3	5,297	10	624	8
9:00 AM	4,238	24	597	1	709	3	670	6	689	4	692	4	527	3	354	3	3,357	18	881	6
10:00 AM	4,627	29	694	3	689	5	699	1	682	4	748	7	623	3	492	6	3,512	20	1,115	9
11:00 AM	5,635	24	814	2	808	3	874	2	840	2	928	4	805	4	566	7	4,264	13	1,371	11
NOON	6,762	34	995	2	1,020	3	1,010	5	1,031	5	1,123	10	920	7	663	2	5,179	25	1,583	9
1:00 PM	6,755	26	955	0	1,045	2	1,082	4	953	2	1,112	8	923	7	685	3	5,147	16	1,608	10
2:00 PM	7,549	23	1,131	3	1,206	0	1,161	4	1,158	3	1,401	6	854	6	638	1	6,057	16	1,492	7
3:00 PM	8,926	28	1,375	5	1,491	3	1,447	4	1,512	3	1,619	6	850	5	632	2	7,444	21	1,482	7
4:00 PM	9,115	38	1,428	9	1,565	5	1,474	4	1,504	4	1,663	7	849	6	632	3	7,634	29	1,481	9
5:00 PM	9,322	34	1,373	2	1,719	5	1,622	9	1,620	2	1,540	5	798	3	650	8	7,874	23	1,448	11
6:00 PM	7,056	48	873	5	1,110	10	1,239	5	1,133	4	1,245	11	807	5	649	8	4,355	24	2,701	24
7:00 PM	4,255	42	497	9	644	6	585	7	602	6	813	6	626	6	488	2	2,328	28	1,927	14
8:00 PM	3,392	37	410	7	443	1	477	8	497	5	602	9	539	4	424	3	1,827	21	1,565	16
9:00 PM	2,772	41	318	6	373	5	381	6	405	6	493	7	460	3	342	8	1,477	23	1,295	18
10:00 PM	2,204	22	212	3	272	2	263	4	292	3	447	7	457	2	261	1	1,039	12	1,165	10
11:00 PM	1,597	26	138	1	171	5	176	2	217	2	341	8	365	6	189	2	702	10	895	16
TOTAL	106,177	698	15,079	83	16,931	78	16,592	83	16,875	82	18,027	147	12,777	122	9,896	103	78,857	408	27,320	290

Crashes during Weekends accounted for 25.73% of all crashes and 41.55% of Fatal Crashes.

Crashes during Weekdays accounted for 74.27% of all crashes and 58.45% of Fatal Crashes.



Section 4: – Safety Devices

Table 4 - 1

Child Safety Device Usage (less than five years old)

Severity of Injury	Safety Device Used	Percent of Safety Device Used	Safety Device Not Used	Percent of Safety Device Not Used	Safety Device Use Unknown	Percent of Unknown
No Injury	10,843	89.72%	161	61.92%	219	49.44%
Unknown Injury	172	1.42%	5	1.92%	136	30.70%
Possible Injury	772	6.39%	29	11.15%	40	9.03%
Non-Incapacitating Injury	242	2.00%	41	15.77%	27	6.09%
Incapacitating Injury	50	0.41%	20	7.69%	17	3.84%
Fatal Injury	6	0.05%	4	1.54%	4	0.90%
TOTALS	12,085	100.00%	260	100.00%	443	100.00%

Table 4 - 2

Driver Safety Device Usage

Severity of Injury	Safety Device Used	Percent of Safety Device Used	Safety Device Not Used	Percent of Safety Device Not Used	Safety Device Use Unknown	Percent of Unknown
No Injury	144,513	82.61%	1,888	43.48%	11,458	50.59%
Unknown Injury	1,601	0.92%	93	2.14%	8,554	37.77%
Possible Injury	17,512	10.01%	568	13.08%	1,050	4.64%
Non-Incapacitating Injury	9,318	5.33%	1,048	24.14%	1,073	4.74%
Incapacitating Injury	1,866	1.07%	565	13.01%	423	1.87%
Fatal Injury	134	0.08%	180	4.15%	92	0.41%
TOTALS	174,944	100.00%	4,342	100.00%	22,650	100.00%

Table 4 - 3

Passenger Safety Device Usage

Severity of Injury	Safety Device Used	Percent of Safety Device Used	Safety Device Not Used	Percent of Safety Device Not Used	Safety Device Use Unknown	Percent of Unknown
No Injury	65,750	84.33%	2,949	62.53%	4,373	63.08%
Unknown Injury	957	1.23%	62	1.31%	1,478	21.32%
Possible Injury	7,169	9.19%	573	12.15%	468	6.75%
Non-Incapacitating Injury	3,340	4.28%	706	14.97%	410	5.91%
Incapacitating Injury	700	0.90%	340	7.21%	162	2.34%
Fatal Injury	55	0.07%	86	1.82%	41	0.59%
TOTALS	77,971	100.00%	4,716	100.00%	6,932	100.00%

Table 4 - 4

Driver Safety Device Usage by Gender

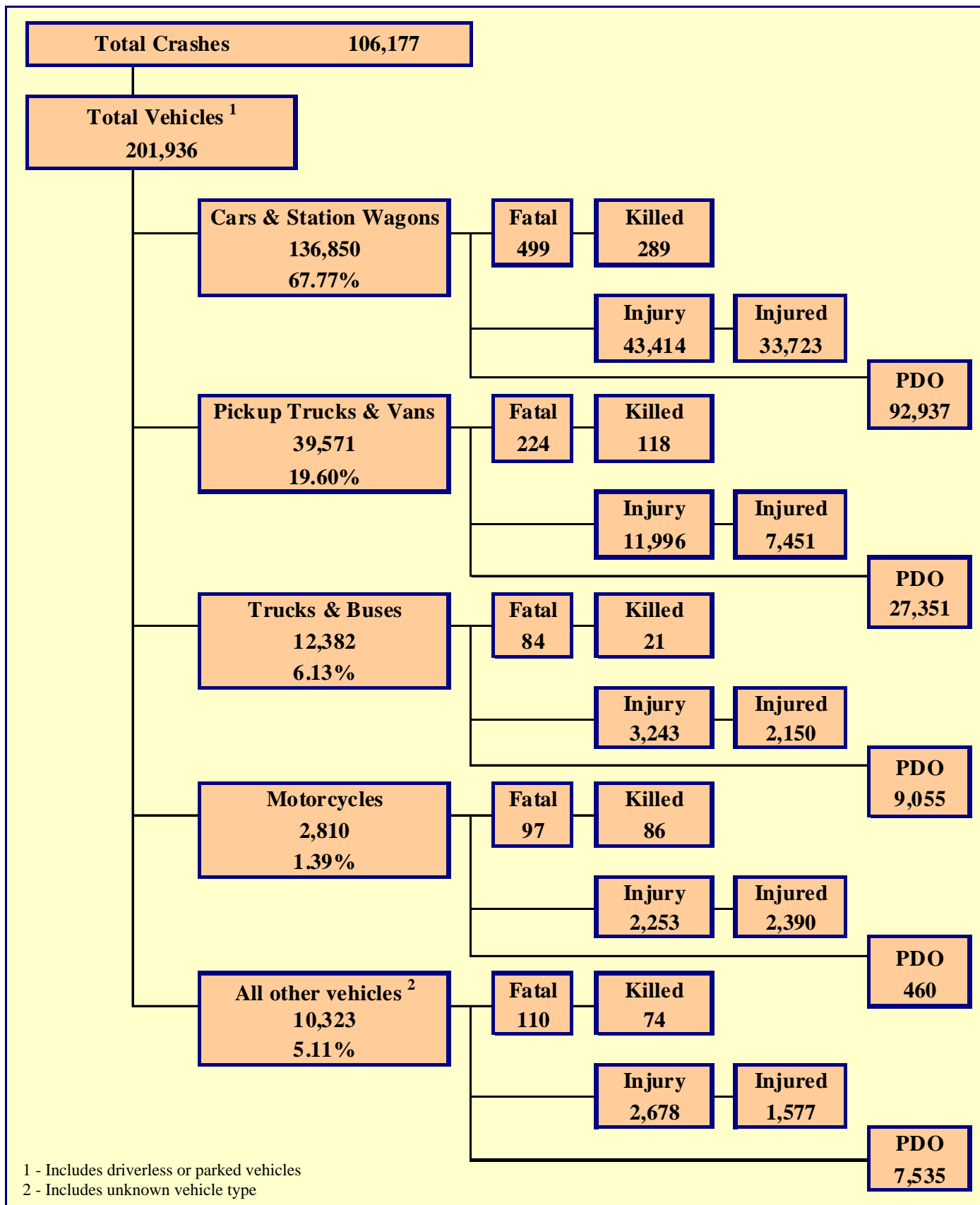
Gender of Driver	Number of Drivers							Total	Percent of Total
	Safety Device Used	Percent of Safety Device Used	Safety Device Not Used	Percent of Safety Device Not Used	Safety Device Use Unknown	Percent of Unknown			
Male	96,225	55.00%	2,912	67.07%	8,065	35.61%	107,202	53.09%	
Female	78,559	44.91%	1,318	30.35%	3,999	17.66%	83,876	41.54%	
Unknown	160	0.09%	112	2.58%	10,586	46.74%	10,858	5.38%	
TOTAL	174,944	100.00%	4,342	100.00%	22,650	100.00%	201,936	100.00%	

Table 4 - 5

Driver Safety Device Usage by Age

Driver Age Group	Number of Drivers							Total	Percent of Total
	Safety Device Used	Percent of Safety Device Used	Safety Device Not Used	Percent of Safety Device Not Used	Safety Device Use Unknown	Percent of Unknown			
15 & Under	209	0.12%	32	0.74%	46	0.20%	287	0.14%	
16	2,503	1.43%	50	1.15%	131	0.58%	2,684	1.33%	
17	4,010	2.29%	112	2.58%	231	1.02%	4,353	2.16%	
18	5,533	3.16%	179	4.12%	310	1.37%	6,022	2.98%	
19	5,847	3.34%	184	4.24%	365	1.61%	6,396	3.17%	
20	5,474	3.13%	195	4.49%	354	1.56%	6,023	2.98%	
21	5,169	2.95%	161	3.71%	333	1.47%	5,663	2.80%	
22	4,749	2.71%	138	3.18%	318	1.40%	5,205	2.58%	
23	4,560	2.61%	146	3.36%	294	1.30%	5,000	2.48%	
24	4,492	2.57%	146	3.36%	302	1.33%	4,940	2.45%	
25-34	37,349	21.35%	951	21.90%	2,435	10.75%	40,735	20.17%	
35-44	31,084	17.77%	689	15.87%	1,943	8.58%	33,716	16.70%	
45-54	27,488	15.71%	593	13.66%	1,633	7.21%	29,714	14.71%	
55-64	19,256	11.01%	351	8.08%	1,049	4.63%	20,656	10.23%	
65-74	10,022	5.73%	155	3.57%	497	2.19%	10,674	5.29%	
75 & Older	6,150	3.52%	98	2.26%	252	1.11%	6,500	3.22%	
Unknown	1,049	0.60%	162	3.73%	12,157	53.67%	13,368	6.62%	
TOTAL	174,944	100.00%	4,342	100.00%	22,650	100.00%	201,936	100.00%	

Section 5 Motor Vehicle and Driver Descriptions



Section 5: – Motor Vehicle and Driver Descriptions

Table 5 - 1

Arizona Motor Vehicle Registrations

Privately Owned Vehicles	4,227,378
Commercial Vehicles	415,702
Buses and Taxis	3,997
Motorcycles	158,411
Mopeds	416
TOTAL	4,805,904
Source: MVD - MV988 MV630419, Currently Registered Vehicles by County Listing, dated 12/31/2010.	

Table 5 - 2

Motor Vehicle Crash Involvement by Vehicle Type

Motor Vehicle Type	Number of Vehicles				
	Total	Percent of Total	In Fatal Crashes	In Injury Crashes	In PDO Crashes
Passenger Cars (Sedans, Convertibles, etc.)	98,771	48.912%	321	31,621	66,829
Station Wagons	38,079	18.857%	178	11,793	26,108
Pickup Trucks	37,519	18.580%	216	11,359	25,944
Vans	2,052	1.016%	8	637	1,407
Truck Tractor (with or without Semi-Trailer)	2,662	1.318%	34	604	2,024
Concrete Mixer Trucks	29	0.014%	0	6	23
Dump Trucks	167	0.083%	0	35	132
Garbage Trucks	107	0.053%	1	20	86
Tanker Trucks	35	0.017%	0	5	30
Wrecker or Tow Trucks	187	0.093%	1	55	131
Other Truck Combinations	8,023	3.973%	41	2,277	5,705
School Bus	230	0.114%	1	41	188
Commercial or Non-Commercial Bus	942	0.466%	6	200	736
Motorcycle (two or three wheel)	2,810	1.392%	97	2,253	460
All Terrain Vehicle or Cycle	145	0.072%	4	116	25
Moped	22	0.011%	6	13	3
Recreational Vehicle	158	0.078%	3	49	106
Motor Home or House Car	163	0.081%	2	28	133
Fire Trucks	42	0.021%	0	5	37
Ambulances	73	0.036%	1	18	54
Other Types Of Vehicles	236	0.117%	3	87	146
Vehicle Type Unknown	9,484	4.697%	91	2,362	7,031
TOTAL	201,936	100.00%	1,014	63,584	137,338

Section 5: – Motor Vehicle and Driver Descriptions

Table 5 - 3

Hit and Run Drivers Involved in Crashes

Hit and Run	Number of Crashes				Number of Persons	
	Total	Fatal	Injury	PDO	Killed	Injured
Yes	11,388	43	2,285	9,060	44	3,150
No	94,789	655	30,910	63,224	718	46,960
TOTAL	106,177	698	33,195	72,284	762	50,110

Table 5 - 4

Gender of Drivers Involved in Crashes

Gender of Driver	Number of Drivers							
	Total	Percent of Total	In Fatal Crashes	Percent of Fatal	In Injury Crashes	Percent of Injury	In PDO Crashes	Percent of PDO
Male	107,202	53.09%	676	66.67%	33,743	53.07%	72,783	53.00%
Female	83,876	41.54%	279	27.51%	28,008	44.05%	55,589	40.48%
Unknown	10,858	5.38%	59	5.82%	1,833	2.88%	8,966	6.53%
TOTAL	201,936	100.00%	1,014	100.00%	63,584	100.00%	137,338	100.00%

Table 5 - 5

License Status of Drivers Involved in Crashes

License Status of Driver	Number of Drivers							
	Total	Percent of Total	In Fatal Crashes	Percent of Fatal	In Injury Crashes	Percent of Injury	In PDO Crashes	Percent of PDO
Arizona License	163,948	81.19%	741	73.08%	52,940	83.26%	110,267	80.29%
All Others*	37,988	18.81%	273	26.92%	10,644	16.74%	27,071	19.71%
TOTAL	201,936	100.00%	1,014	100.00%	63,584	100.00%	137,338	100.00%

*Includes drivers that have a suspended, revoked, out-of-state or country license, as well as drivers with no license or unknown license type

Table 5 - 6

Passengers Killed and Injured by Age and Gender

Age of Passenger	Passengers Killed			Passengers Injured			
	Total	Male	Female	Total	Male	Female	Gender Unknown
0-4	11	6	5	978	505	473	0
5-9	3	2	1	1,161	555	606	0
10-14	4	3	1	1,250	525	725	0
15-19	18	14	4	2,184	875	1,309	0
20-24	20	15	5	1,532	641	891	0
25-34	21	12	9	1,792	707	1,085	0
35-44	26	13	13	1,211	421	790	0
45-54	17	7	10	1,176	326	850	0
55-64	25	7	18	915	237	678	0
65-74	14	3	11	607	137	470	0
75 & Older	22	6	16	490	125	365	0
Unknown	1	0	1	572	205	309	58
TOTAL	182	88	94	13,868	5,259	8,551	58

Section 5: – Motor Vehicle and Driver Descriptions

Table 5 - 7

Drivers and Passengers Killed and Injured by Vehicle Type

Motor Vehicle Type	Number of Drivers		Number of Passengers	
	Killed	Injured	Killed	Injured
Passenger Cars (Sedans, Convertibles, etc.)	120	17,903	65	6,957
Station Wagons	64	5,882	40	2,981
Pickup Trucks	74	4,878	40	2,127
Vans	4	279	0	167
Truck Tractor (with or without Semi-Trailer)	0	161	1	53
Concrete Mixer Trucks	0	2	0	1
Dump Trucks	0	12	0	0
Garbage Trucks	0	2	0	1
Tanker Trucks	0	2	0	0
Wrecker or Tow Trucks	0	16	0	3
Other Truck Combinations	8	957	4	694
School Bus	0	8	0	33
Commercial or Non-Commercial Bus	0	48	8	157
Motorcycle (two or three wheel)	82	2,173	4	217
All Terrain Vehicle or Cycle	2	108	2	45
Moped	6	13	0	0
Recreational Vehicle	0	28	2	18
Motor Home or House Car	0	11	0	10
Fire Trucks	0	1	0	0
Ambulances	0	5	0	8
Other Types Of Vehicles	2	51	1	18
Vehicle Type Unknown	44	883	15	378
TOTAL	406	33,423	182	13,868

Table 5 - 8

Drivers Killed and Injured by Age and Gender

Age of Driver	Drivers Killed			Drivers Injured			
	Total	Male	Female	Total	Male	Female	Gender Unknown
0-4	0	0	0	0	0	0	0
5-9	0	0	0	2	1	1	0
10-14	0	0	0	29	19	10	0
15-19	19	15	4	3,078	1,468	1,610	0
20-24	40	32	8	4,787	2,305	2,482	0
25-34	94	63	31	7,078	3,419	3,659	0
35-44	64	53	11	5,805	2,821	2,984	0
45-54	56	41	15	5,387	2,709	2,678	0
55-64	62	49	13	3,919	1,965	1,954	0
65-74	28	16	12	1,958	1,035	923	0
75 & Older	43	28	15	1,147	608	539	0
Unknown	0	0	0	233	117	56	60
TOTAL	406	297	109	33,423	16,467	16,896	60

Section 5: – Motor Vehicle and Driver Descriptions

Table 5 - 9

Licensed Drivers in Arizona by Age

Driver Age Group	Male Number	Percent of Male	Female Number	Percent of Female	Total Number	Percent of Total	Cumulative Percent
16	9,672	0.42%	9,358	0.41%	19,030	0.42%	0.42%
17	18,358	0.80%	17,142	0.76%	35,500	0.78%	1.20%
18	26,948	1.18%	24,561	1.09%	51,509	1.14%	2.34%
19	31,816	1.39%	29,671	1.31%	61,487	1.36%	3.69%
20	34,694	1.52%	33,117	1.47%	67,811	1.49%	5.19%
21	35,870	1.57%	34,424	1.53%	70,294	1.55%	6.74%
22	36,314	1.59%	35,574	1.58%	71,888	1.58%	8.32%
23	36,637	1.61%	36,073	1.60%	72,710	1.60%	9.92%
24	37,744	1.65%	37,630	1.67%	75,374	1.66%	30.10%
25-34	422,938	18.54%	417,149	18.49%	840,087	18.51%	30.10%
35-44	445,555	19.53%	414,865	18.39%	860,420	18.96%	49.06%
45-54	439,645	19.27%	432,280	19.16%	871,925	19.22%	68.27%
55-64	367,789	16.12%	382,179	16.94%	749,968	16.53%	84.80%
65-74	205,539	9.01%	213,611	9.47%	419,150	9.24%	94.04%
75 & older	131,606	5.77%	138,894	6.16%	270,500	5.96%	100.00%
TOTALS	2,281,125	100.00%	2,256,528	100.00%	4,537,653	100.00%	100.00%

Source: MVD - MV708 MV650653-1, Point-in-Time Driver Credential Report/All Driver Licenses by Age, Gender, & Class (page 19), dated 1/3/2011.

Table 5 - 10

Driver Involvement by Age

Driver Age Group	Number of Drivers							
	Total	Percent of Total	In Fatal Crashes	Percent of Fatal	In Injury Crashes	Percent of Injury	In PDO Crashes	Percent of PDO
15 & Under	287	0.14%	2	0.20%	99	0.16%	186	0.14%
16	2,684	1.33%	7	0.69%	793	1.25%	1,884	1.37%
17	4,353	2.16%	9	0.89%	1,280	2.01%	3,064	2.23%
18	6,022	2.98%	16	1.58%	1,932	3.04%	4,074	2.97%
19	6,396	3.17%	19	1.87%	2,067	3.25%	4,310	3.14%
20	6,023	2.98%	24	2.37%	1,897	2.98%	4,102	2.99%
21	5,663	2.80%	17	1.68%	1,797	2.83%	3,849	2.80%
22	5,205	2.58%	24	2.37%	1,730	2.72%	3,451	2.51%
23	5,000	2.48%	16	1.58%	1,601	2.52%	3,383	2.46%
24	4,940	2.45%	17	1.68%	1,647	2.59%	3,276	2.39%
25-34	40,735	20.17%	195	19.23%	13,136	20.66%	27,404	19.95%
35-44	33,716	16.70%	178	17.55%	10,850	17.06%	22,688	16.52%
45-54	29,714	14.71%	165	16.27%	9,772	15.37%	19,777	14.40%
55-64	20,656	10.23%	122	12.03%	6,894	10.84%	13,640	9.93%
65-74	10,674	5.29%	66	6.51%	3,516	5.53%	7,092	5.16%
75 & Older	6,500	3.22%	68	6.71%	2,085	3.28%	4,347	3.17%
Unknown	13,368	6.62%	69	6.80%	2,488	3.91%	10,811	7.87%
TOTAL	201,936	100.00%	1,014	100.00%	63,584	100.00%	137,338	100.00%

Section 5: – Motor Vehicle and Driver Descriptions

Table 5 - 11

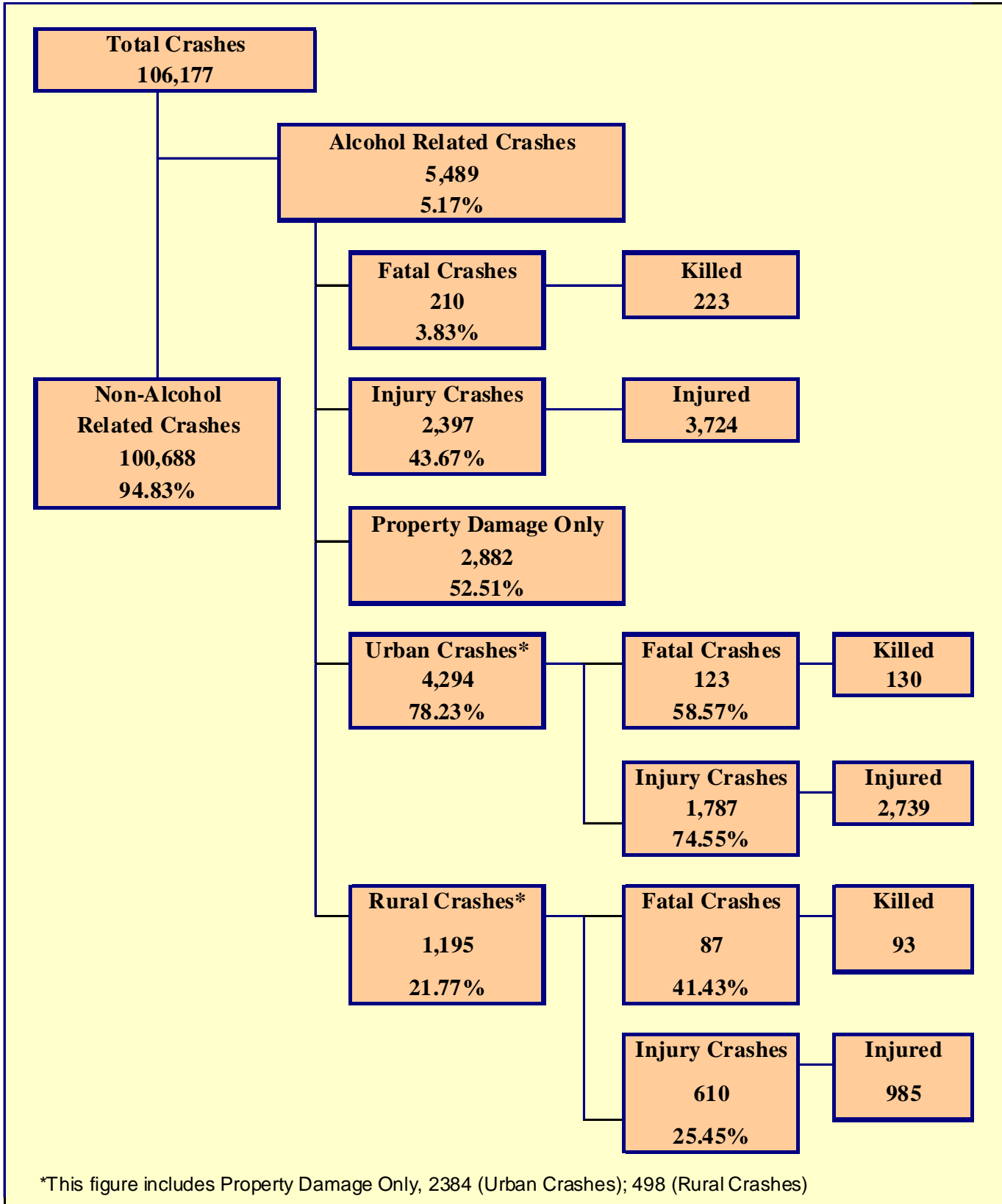
Driver Errors

Type of Violation or Behavior	Number of Drivers							
	Total	Percent of Total	In Fatal Crashes	Percent of Fatal	In Injury Crashes	Percent of Injury	In PDO Crashes	Percent of PDO
No Improper Action	96,741	47.91%	386	38.07%	30,970	48.71%	65,385	47.61%
Speed too Fast for Conditions	33,939	16.81%	145	14.30%	11,080	17.43%	22,714	16.54%
Exceeded Lawful Speed	1,055	0.52%	29	2.86%	451	0.71%	575	0.42%
Failed to Yield Right-Of-Way	13,643	6.76%	47	4.64%	5,249	8.26%	8,347	6.08%
Followed Too Closely	5,520	2.73%	4	0.39%	1,465	2.30%	4,051	2.95%
Ran Stop Sign	1,110	0.55%	13	1.28%	441	0.69%	656	0.48%
Disregarded Traffic Signal	4,910	2.43%	28	2.76%	2,313	3.64%	2,569	1.87%
Made Improper Turn	4,270	2.11%	8	0.79%	1,229	1.93%	3,033	2.21%
Drove in Opposing Lane	1,212	0.60%	47	4.64%	450	0.71%	715	0.52%
Knowingly Operated with Faulty or Missing Equipment	269	0.13%	1	0.10%	98	0.15%	170	0.12%
Required Motorcycle Safety Equipment Not Used	17	0.01%	0	0.00%	14	0.02%	3	0.00%
Passed in No-Passing Zone	121	0.06%	0	0.00%	34	0.05%	87	0.06%
Unsafe Lane Change	5,987	2.96%	10	0.99%	878	1.38%	5,099	3.71%
Failed to Keep in Proper Lane	3,067	1.52%	40	3.94%	799	1.26%	2,228	1.62%
Disregarded Pavement Markings	193	0.10%	1	0.10%	50	0.08%	142	0.10%
Other Unsafe Passing	622	0.31%	6	0.59%	144	0.23%	472	0.34%
Inattention/Distracted	12,026	5.96%	27	2.66%	3,280	5.16%	8,719	6.35%
Electronic Communications Device	148	0.07%	0	0.00%	56	0.09%	92	0.07%
Other	5,664	2.80%	21	2.07%	1,647	2.59%	3,996	2.91%
Unknown	11,422	5.66%	201	19.82%	2,936	4.62%	8,285	6.03%
TOTAL	201,936	100.00%	1,014	100.00%	63,584	100.00%	137,338	100.00%

Table 5 - 12

Driver Physical Condition

Type of Condition	Number of Drivers							
	Total	Percent of Total	In Fatal Crashes	Percent of Fatal	In Injury Crashes	Percent of Injury	In PDO Crashes	Percent of PDO
No Apparent Influence	177,894	88.09%	544	53.65%	56,139	88.29%	121,211	88.26%
Had Been Drinking	5,295	2.62%	160	15.78%	2,266	3.56%	2,869	2.09%
Appeared to be Under the Influence of Drugs*	585	0.29%	31	3.06%	267	0.42%	287	0.21%
Medications	305	0.15%	3	0.30%	137	0.22%	165	0.12%
Illness	692	0.34%	6	0.59%	333	0.52%	353	0.26%
Physical Impairment	189	0.09%	0	0.00%	93	0.15%	96	0.07%
Fell Asleep or Fatigued	1,287	0.64%	14	1.38%	579	0.91%	694	0.51%
Other	1,073	0.53%	11	1.08%	307	0.48%	755	0.55%
Unknown	14,616	7.24%	245	24.16%	3,463	5.45%	10,908	7.94%
TOTAL	201,936	100.00%	1,014	100.00%	63,584	100.00%	137,338	100.00%
*Illegal drugs or narcotics								



The statistics in the Alcohol Related section represent those crashes where the investigating officer indicated that a driver, pedestrian, or pedalcyclist had been drinking an alcoholic beverage and may or may not be substantiated by a blood or breath test. No assumption is to be made that the person was legally intoxicated (blood alcohol content of 0.08% or higher) at the time of the crash.

Table 6 - 1

Economic Loss Due to Alcohol Related Crashes in Arizona for 2010

Fatalities	\$293,423,400
Incapacitating Injuries	\$44,951,400
Non-Incapacitating Injuries	\$34,467,534
Possible Injuries	\$19,364,088
Property Damage Only	\$24,105,048
TOTAL	\$416,311,470

Refer to note on Page 4 for Economic Loss Estimates

Table 6 - 2

Alcohol Related Crash History

Year	Alcohol Related Crashes	Percent of all Crashes	Persons Killed	Percent of all Fatalities	Persons Injured	Percent of all Injuries
2006	8,218	5.73%	385	29.59%	5,956	8.51%
2007	7,938	5.62%	397	37.07%	5,532	8.37%
2008	6,878	5.71%	355	37.85%	4,834	8.55%
2009	5,891	5.50%	267	33.13%	4,174	8.22%
2010	5,489	5.17%	223	29.27%	3,724	7.43%

Table 6 - 3

Manner of Collision in Alcohol Related Crashes

Manner of Collision Type	Number of Crashes							
	Total	Percent of All Crashes	Fatal	Percent of Fatal Crashes	Injury	Percent of Injury Crashes	PDO	Percent of PDO Crashes
Angle	501	16.20%	23	20.91%	273	19.31%	205	13.07%
Left Turn	257	8.31%	4	3.64%	144	10.18%	109	6.95%
Read End	1,291	41.75%	13	11.82%	545	38.54%	733	46.75%
Head-On	220	7.12%	13	11.82%	124	8.77%	83	5.29%
Sideswipe (same)	348	11.25%	1	0.91%	100	7.07%	247	15.75%
Sideswipe (opposite)	109	3.53%	3	2.73%	36	2.55%	70	4.46%
Rear to Side	32	1.03%	0	0.00%	3	0.21%	29	1.85%
Rear to Rear	16	0.52%	0	0.00%	8	0.57%	8	0.51%
Other	284	9.18%	51	46.36%	164	11.60%	69	4.40%
Unknown	34	1.10%	2	1.82%	17	1.20%	15	0.96%
TOTAL	3,092	100.00%	110	100.00%	1,414	100.00%	1,568	100.00%

Note: Includes only multi-vehicle alcohol related crashes

Section 6: – Alcohol Related Crashes

Table 6 - 4

Alcohol Related Crashes by First Harmful Event

First Harmful Event Type	Number of Crashes				Number of Persons	
	Total	Fatal	Injury	PDO	Killed	Injured
Collision with Motor Vehicle in Transport	2,361	44	1,072	1,245	51	2,019
Overturning	305	34	218	53	38	327
Collision with Pedestrian	219	58	150	11	58	160
Collision with Pedalcyclist	56	5	36	15	5	37
Collision with Animal	6	0	4	2	0	4
Collision with Fixed Object	1,897	60	682	1,155	62	859
Collision with Non-fixed Object*	302	3	83	216	3	105
Vehicle Fire or Explosion	5	0	3	2	0	5
Other Non-collision**	151	6	74	71	6	98
Unknown	187	0	75	112	0	110
TOTAL	5,489	210	2,397	2,882	223	3,724
*Includes Collision with Parked Vehicles, Trains, Railway Vehicles, and Work Zone Equipment						
**Includes Vehicle Immersion, Jackknife, and Cargo Loss or Shift						

Table 6 - 5

Alcohol Related Crashes by Vehicle Type

Motor Vehicle Type	Number of Vehicles				
	Total	Percent of Total	In Fatal Crashes	In Injury Crashes	In PDO Crashes
Passenger Cars (Sedans, Convertibles, etc.)	2,627	49.613%	59	1,096	1,472
Station Wagons	902	17.035%	21	380	501
Pickup Trucks	1,189	22.455%	41	489	659
Vans	51	0.963%	1	24	26
Truck Tractor (with or without Semi-Trailer)	3	0.057%	0	0	3
Concrete Mixer Trucks	0	0.000%	0	0	0
Dump Trucks	0	0.000%	0	0	0
Garbage Trucks	0	0.000%	0	0	0
Tanker Trucks	0	0.000%	0	0	0
Wrecker or Tow Trucks	1	0.019%	0	0	1
Other Truck Combinations	109	2.059%	2	34	73
School Bus	0	0.000%	0	0	0
Commercial or Non-Commercial Bus	0	0.000%	0	0	0
Motorcycle (two or three wheel)	184	3.475%	27	149	8
All Terrain Vehicle or Cycle	23	0.434%	2	19	2
Moped	2	0.038%	0	2	0
Recreational Vehicle	8	0.151%	0	5	3
Motor Home or House Car	3	0.057%	0	1	2
Fire Trucks	0	0.000%	0	0	0
Ambulances	0	0.000%	0	0	0
Other Types Of Vehicles	6	0.113%	0	4	2
Vehicle Type Unknown	187	3.532%	7	63	117
TOTAL	5,295	100.00%	160	2,266	2,869

Table 6 - 6

Lighting Conditions in Alcohol Related Crashes

Type of Lighting Conditions	Number of Crashes				Number of Persons	
	Total	Fatal	Injury	PDO	Killed	Injured
Daylight	1,508	39	682	787	42	1,130
Dawn	107	4	51	52	4	76
Dusk	166	7	72	87	7	102
Dark - Lighted	2,687	71	1,103	1,513	74	1,660
Dark - Not Lighted	877	65	428	384	69	648
Dark - Unknown Lighting	144	24	61	59	27	108
TOTAL	5,489	210	2,397	2,882	223	3,724

Table 6 - 7

Road Surface Conditions in Alcohol Related Crashes

Type of Road Surface Condition	Number of Drivers				Number of Persons	
	Total	In Fatal Crashes	In Injury Crashes	In PDO Crashes	Killed	Injured
Dry	4,904	137	2,122	2,645	189	3,483
Wet	287	7	110	170	13	170
Snow	17	2	4	11	3	5
Slush	1	0	1	0	0	2
Ice/Frost	6	0	4	2	1	6
Water (standing or moving)	0	0	0	0	0	0
Sand	1	0	0	1	0	0
Mud, Dirt, Gravel	45	2	18	25	2	34
Oil	1	1	0	0	1	1
Other	6	0	2	4	0	2
Unknown	27	11	5	11	14	21
TOTAL	5,295	160	2,266	2,869	223	3,724

Table 6 - 8

Gender of Drivers Involved in Alcohol Related Crashes

Gender of Driver	Number of Drivers							
	Total	Percent of Total	In Fatal Crashes	Percent of Fatal	In Injury Crashes	Percent of Injury	In PDO Crashes	Percent of PDO
Male	3,884	73.35%	132	82.50%	1,682	74.23%	2,070	72.15%
Female	1,360	25.68%	28	17.50%	570	25.15%	762	26.56%
Unknown	51	0.96%	0	0.00%	14	0.62%	37	1.29%
TOTAL	5,295	100.00%	160	100.00%	2,266	100.00%	2,869	100.00%

In total crashes across the state, 53.09% of the drivers were males. When alcohol was involved, males accounted for 73.35% of the drivers.

Section 6: – Alcohol Related Crashes

Table 6 - 9

Driver Involvement by Age in Alcohol Related Crashes

Driver Age Group	Number of Drivers							
	Total	Percent of Total	In Fatal Crashes	Percent of Fatal	In Injury Crashes	Percent of Injury	In PDO Crashes	Percent of PDO
15 & Under	6	0.11%	0	0.00%	2	0.09%	4	0.14%
16	30	0.57%	2	1.25%	7	0.31%	21	0.73%
17	64	1.21%	1	0.63%	30	1.32%	33	1.15%
18	134	2.53%	2	1.25%	55	2.43%	77	2.68%
19	173	3.27%	2	1.25%	75	3.31%	96	3.35%
20	215	4.06%	10	6.25%	86	3.80%	119	4.15%
21	235	4.44%	8	5.00%	106	4.68%	121	4.22%
22	225	4.25%	6	3.75%	94	4.15%	125	4.36%
23	248	4.68%	8	5.00%	111	4.90%	129	4.50%
24	213	4.02%	4	2.50%	86	3.80%	123	4.29%
25-34	1,467	27.71%	38	23.75%	646	28.51%	783	27.29%
35-44	979	18.49%	30	18.75%	424	18.71%	525	18.30%
45-54	745	14.07%	27	16.88%	320	14.12%	398	13.87%
55-64	335	6.33%	14	8.75%	135	5.96%	186	6.48%
65-74	110	2.08%	6	3.75%	52	2.29%	52	1.81%
75 & Older	26	0.49%	1	0.63%	12	0.53%	13	0.45%
Unknown	90	1.70%	1	0.63%	25	1.10%	64	2.23%
TOTAL	5,295	100.00%	160	100.00%	2,266	100.00%	2,869	100.00%

Table 6 - 10

When Alcohol Related Crashes Occurred in 2010

Time of Day	Total	Weekday	Weekend*
Daytime**	1,435	906	529
Nighttime	4,054	1,618	2,436
Total	5,489	2,524	2,965
*Weekend begins at 6:00 p.m. on Friday and continues through 6:00 a.m. Monday. All other times and days are considered Weekdays.			
**Day time refers to the hours between 6:00 a.m. and 6:00 p.m.			

Table 6 - 11

Safety Device Usage for Drinking Drivers

Severity of Injury	Safety Device Not Used	Lap Belt	Lap & Shoulder Belt	Protective Helmet	Other	Unknown	Totals
No Injury	227	44	2,043	2	8	1,010	3,334
Unknown Injury	12	0	24	0	4	150	190
Possible Injury	85	5	280	2	0	178	550
Non-Incapacitating Injury	169	8	361	12	2	232	784
Incapacitating Injury	140	1	80	8	0	102	331
Fatal Injury	73	0	13	4	1	15	106
TOTALS	706	58	2,801	28	15	1,687	5,295

Table 6 - 12

Persons Killed and Injured in Alcohol Related Crashes

Age of Victim	Persons Killed			Persons Injured			
	Total	Male	Female	Total	Male	Female	Gender Unknown
0-4	1	0	1	60	29	31	0
5-9	2	2	0	52	22	30	0
10-14	2	1	1	82	29	53	0
15-19	14	12	2	356	182	174	0
20-24	41	36	5	722	468	254	0
25-34	43	29	14	898	569	329	0
35-44	38	29	9	598	381	217	0
45-54	41	31	10	468	317	151	0
55-64	26	20	6	254	151	103	0
65-74	13	12	1	107	60	47	0
75 & Older	2	1	1	40	21	19	0
Unknown	0	0	0	87	46	22	19
TOTAL	223	173	50	3,724	2,275	1,430	19

Table 6 - 13

Alcohol Related Crashes by County

County	Number of Crashes				Number of Persons	
	Total	Fatal	Injury	PDO	Killed	Injured
Apache	42	8	22	12	10	47
Cochise	77	4	38	35	4	57
Coconino	144	11	67	66	13	128
Gila	57	3	29	25	3	43
Graham	17	1	9	7	1	14
Greenlee	10	1	7	2	1	9
La Paz	22	2	10	10	2	19
Maricopa	3,396	89	1,406	1,901	95	2,174
Mohave	236	14	120	102	14	176
Navajo	90	11	39	40	12	66
Pima	829	36	374	419	37	574
Pinal	228	15	111	102	15	187
Santa Cruz	31	1	14	16	1	23
Yavapai	168	9	81	78	10	112
Yuma	142	5	70	67	5	95
TOTAL	5,489	210	2,397	2,882	223	3,724

Section 6: – Alcohol Related Crashes

Chart 6 - 1

All Alcohol Related Crashes vs. Fatal Alcohol Related Crashes by Day of Week

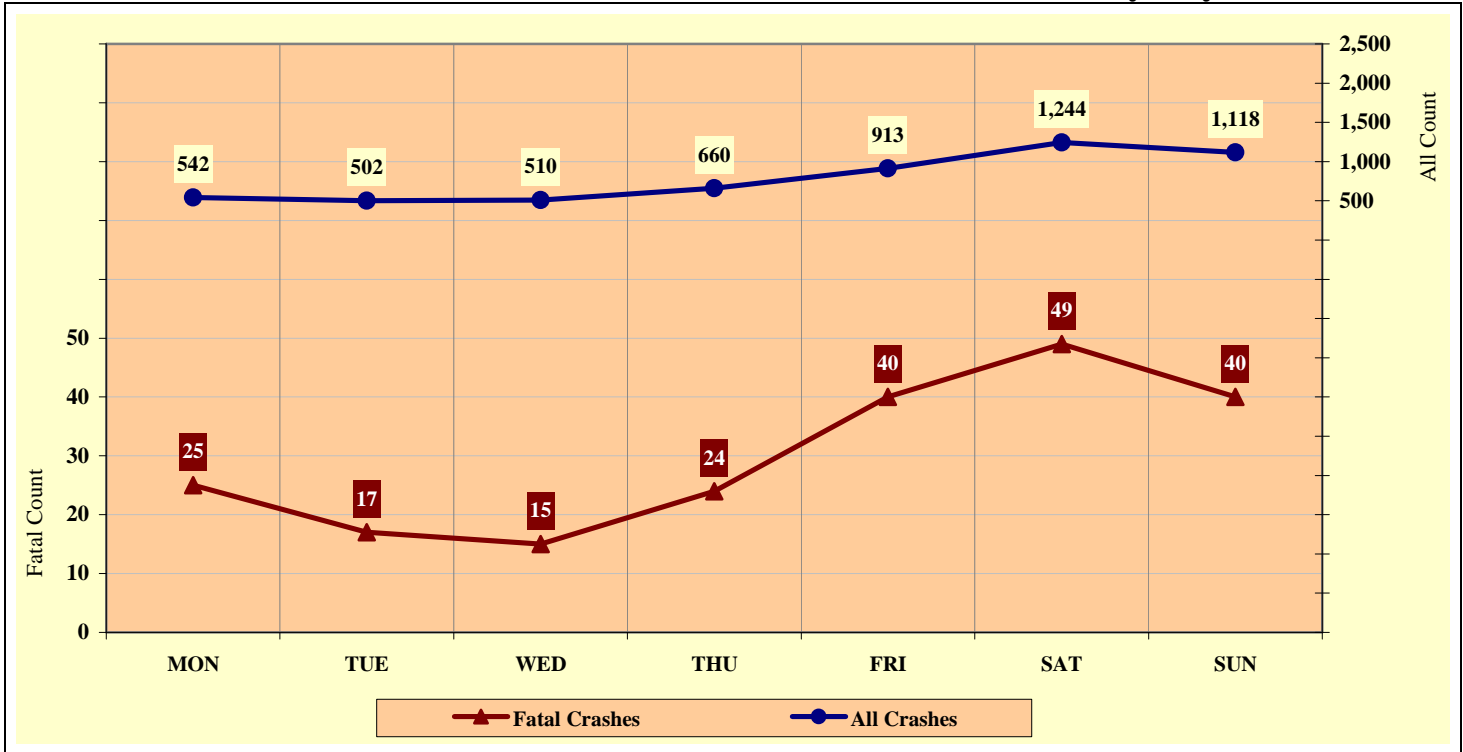


Chart 6 - 2

All Alcohol Related Crashes vs. Fatal Alcohol Related Crashes by Month

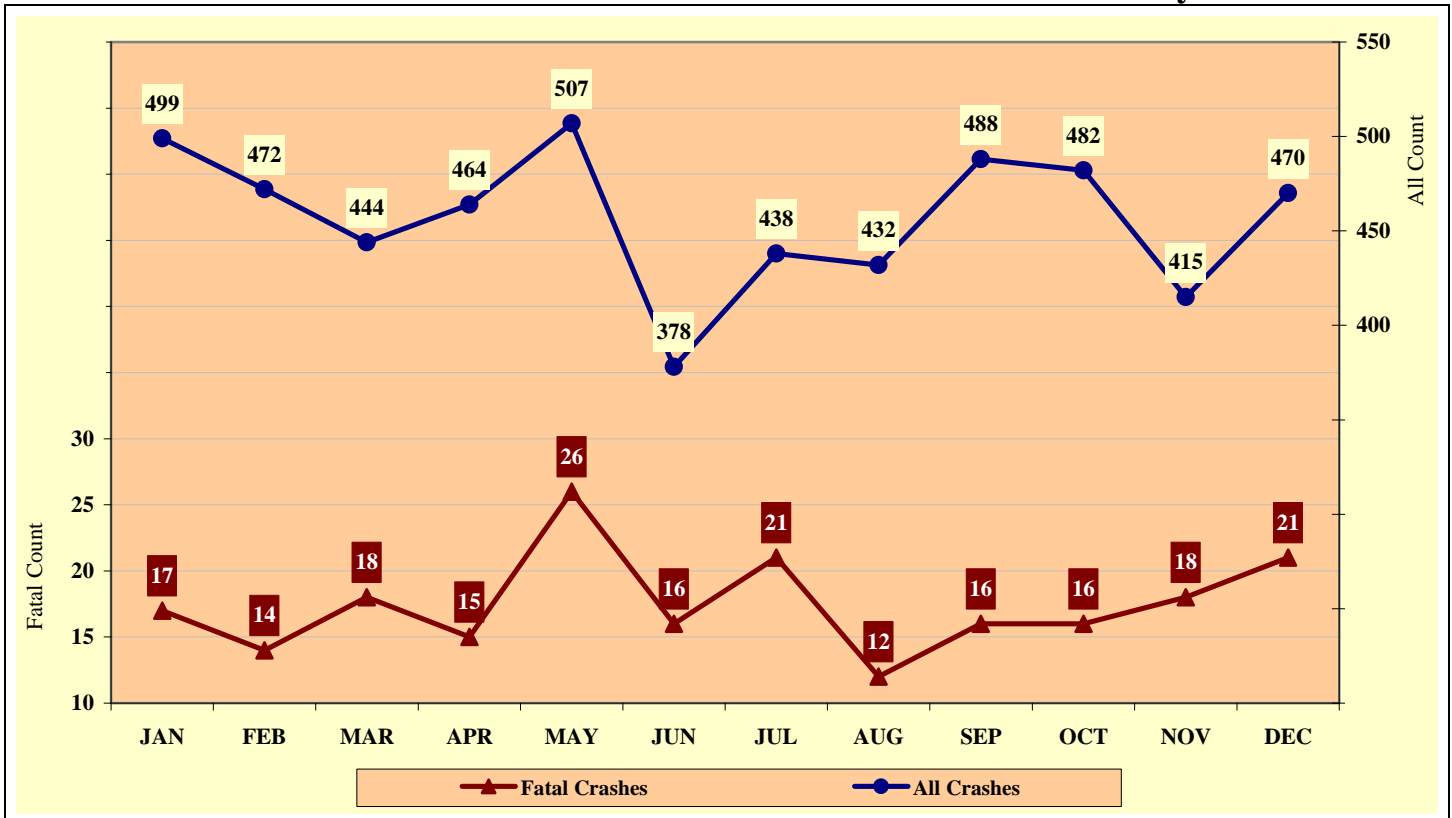


Chart 6 - 3

All Alcohol Related Crashes vs. Fatal Alcohol Related Crashes - Weekdays

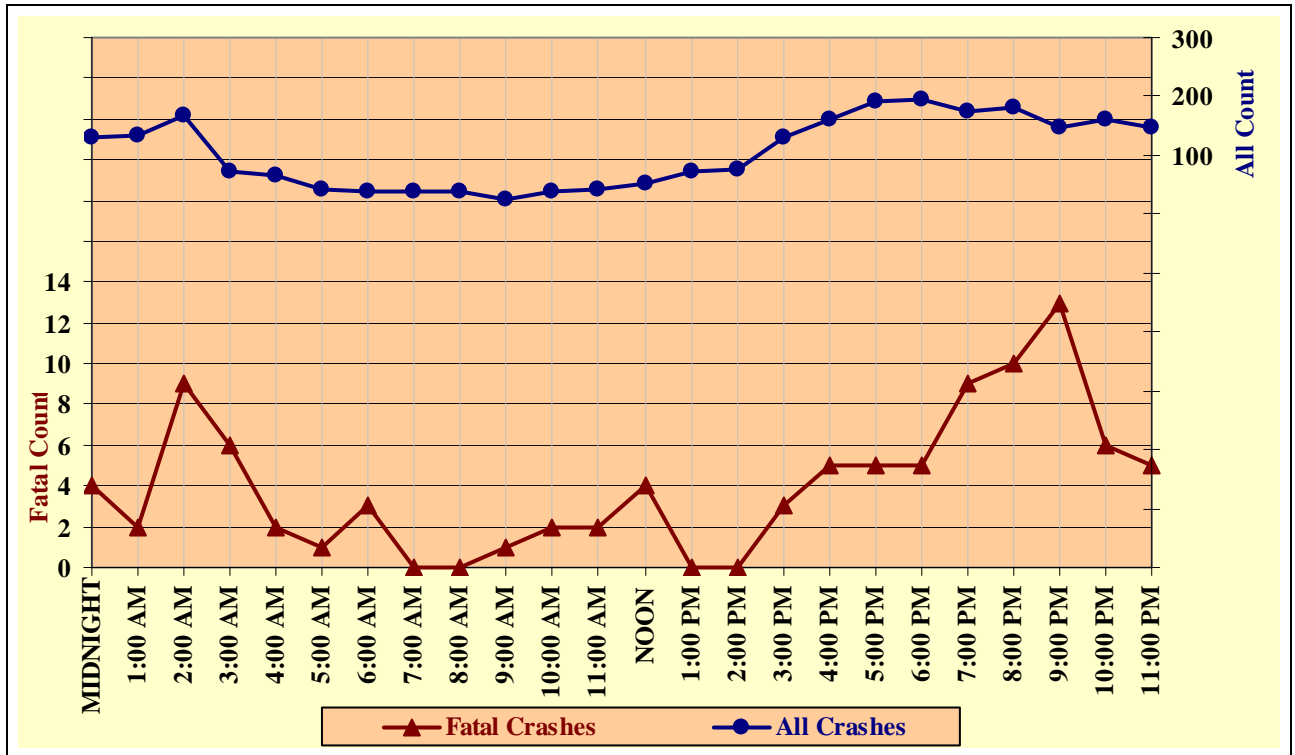
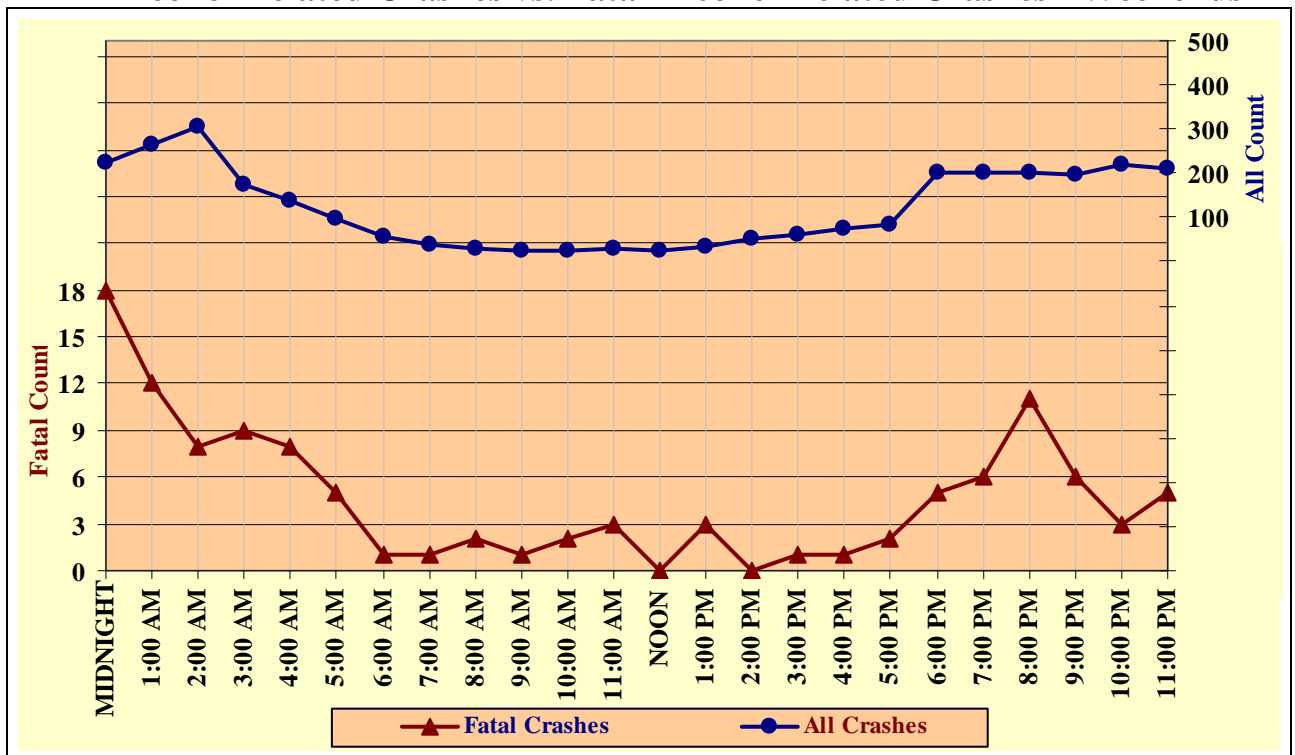


Chart 6 - 4

All Alcohol Related Crashes vs. Fatal Alcohol Related Crashes - Weekends



Section 6: – Alcohol Related Crashes

Table 6 - 14

Alcohol Related Crashes by Hour and Day of Week

Hour Beginning	Total Crashes		Monday		Tuesday		Wednesday		Thursday		Friday		Saturday		Sunday		Weekdays		Weekends	
	All	Fatal	All	Fatal	All	Fatal	All	Fatal	All	Fatal	All	Fatal	All	Fatal	All	Fatal	All	Fatal	All	Fatal
MIDNIGHT	352	22	34	3	20	0	21	0	38	2	51	2	92	8	96	7	130	4	222	18
1:00 AM	400	14	34	1	23	1	26	0	39	1	47	0	107	5	124	6	135	2	265	12
2:00 AM	474	17	33	0	24	1	30	0	48	2	65	6	130	6	144	2	167	9	307	8
3:00 AM	244	15	23	1	7	0	16	0	22	2	26	4	66	4	84	4	71	6	173	9
4:00 AM	205	10	9	1	10	1	10	0	18	0	28	1	57	3	73	4	66	2	139	8
5:00 AM	141	6	11	0	11	0	11	0	4	0	17	1	44	4	43	1	43	1	98	5
6:00 AM	95	4	7	0	8	3	7	0	7	0	10	0	31	1	25	0	39	3	56	1
7:00 AM	76	1	10	0	4	0	6	0	5	0	13	0	25	1	13	0	38	0	38	1
8:00 AM	70	2	10	0	7	0	4	0	10	0	8	0	17	1	14	1	39	0	31	2
9:00 AM	48	2	2	0	3	0	2	0	8	1	9	0	14	0	10	1	24	1	24	1
10:00 AM	65	4	4	0	8	2	7	0	10	0	11	0	12	1	13	1	40	2	25	2
11:00 AM	70	5	5	0	9	0	5	0	12	1	12	1	13	1	14	2	43	2	27	3
NOON	78	4	7	0	12	0	11	0	10	2	12	2	10	0	16	0	52	4	26	0
1:00 PM	104	3	16	0	13	0	14	0	15	0	14	0	23	3	9	0	72	0	32	3
2:00 PM	128	0	18	0	17	0	11	0	10	0	21	0	30	0	21	0	77	0	51	0
3:00 PM	190	4	31	1	30	1	23	1	24	0	22	0	31	0	29	1	130	3	60	1
4:00 PM	236	6	25	1	30	0	32	1	29	0	46	3	42	1	32	0	162	5	74	1
5:00 PM	275	7	33	0	29	1	40	2	46	0	42	2	46	0	39	2	190	5	85	2
6:00 PM	396	10	52	1	44	3	43	1	56	0	75	1	66	2	60	2	195	5	201	5
7:00 PM	373	15	51	4	42	1	37	1	43	3	77	4	66	0	57	2	173	9	200	6
8:00 PM	383	21	46	4	42	1	51	2	42	3	69	8	73	2	60	1	181	10	202	11
9:00 PM	345	19	33	5	30	1	35	4	50	3	63	1	82	2	52	3	148	13	197	6
10:00 PM	382	9	25	2	39	0	38	2	59	2	86	2	84	1	51	0	161	6	221	3
11:00 PM	359	10	23	1	40	1	30	1	55	2	89	2	83	3	39	0	148	5	211	5
TOTAL	5,489	210	542	25	502	17	510	15	660	24	913	40	1,244	49	1,118	40	2,524	97	2,965	113

Crashes during Weekends accounted for 54.02% of all Alcohol Related crashes and 53.81% of Alcohol Related Fatal Crashes.

Crashes during Weekdays accounted for 45.98% of all Alcohol Related crashes and 46.19% of Alcohol Related Fatal Crashes.

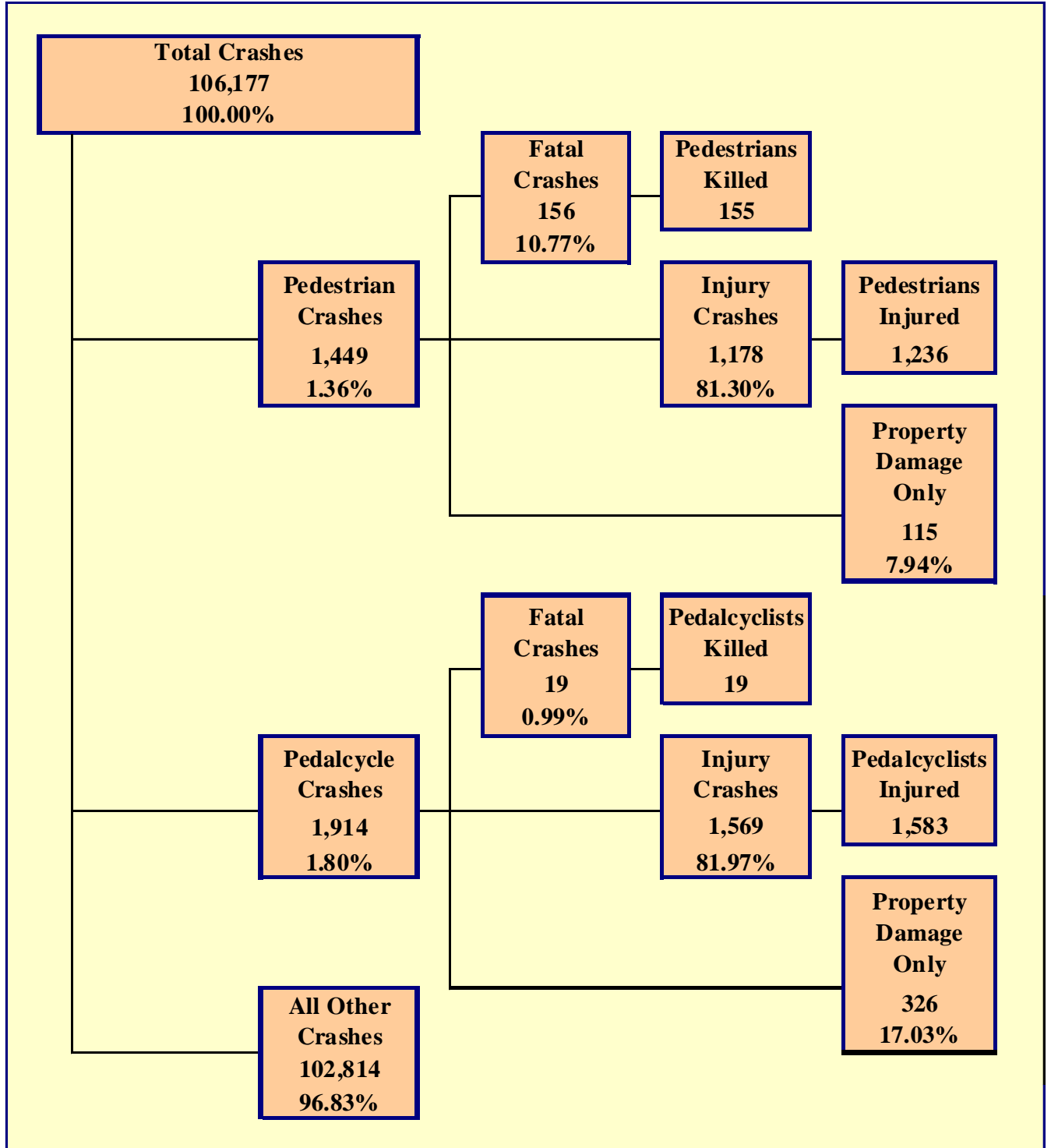


Table 7 - 1

Pedestrians Killed and Injured By Age and Gender

Age Group	Pedestrians Killed			Pedestrians Injured			
	Total	Male	Female	Total	Male	Female	Gender Unknown
0-4	2	1	1	33	22	11	0
5-9	3	3	0	53	36	17	0
10-14	6	4	2	115	64	51	0
15-19	8	8	0	156	89	67	0
20-24	15	14	1	125	81	44	0
25-34	18	16	2	168	111	57	0
35-44	17	11	6	154	105	49	0
45-54	29	19	10	171	109	62	0
55-64	26	18	8	122	68	54	0
65-74	21	16	5	43	29	14	0
75 & Older	10	8	2	44	25	19	0
Unknown	0	0	0	52	23	17	12
TOTAL	155	118	37	1,236	762	462	12

Table 7 - 2

Pedestrian Crashes by Geographic Location

Category	Total	Urban	Percent of Total	Rural	Percent of Total
Total Crashes	1,449	1,280	88.34%	169	11.66%
Fatal Crashes	156	102	65.38%	54	34.62%
Injury Crashes	1,178	1,079	91.60%	99	8.40%
PDO Crashes	115	99	86.09%	16	13.91%
Pedestrians Killed	155	101	65.16%	54	34.84%
Pedestrians Injured	1,236	1,135	91.83%	101	8.17%

Table 7 - 3

Pedestrian Crash History

Year	Pedestrian Crashes	Percent of all Crashes	Pedestrians Killed	Percent of all Fatalities	Pedestrians Injured	Percent of all Injuries
2006	1,660	1.16%	172	13.22%	1,470	2.10%
2007	1,737	1.23%	157	14.66%	1,542	2.33%
2008	1,581	1.31%	125	13.33%	1,432	2.53%
2009	1,527	1.43%	122	15.14%	1,309	2.58%
2010	1,449	1.36%	155	20.34%	1,236	2.47%

Table 7 - 4

Pedestrians Killed by Age and Action

Pedestrian Action	Total	Age Group of Pedestrian											
		0-4	5-9	10-14	15-19	20-24	25-34	35-44	45-54	55-64	65-74	75 & Older	Unknown
Crossing Road	87	0	2	3	3	4	7	8	19	18	16	7	0
Walking With Traffic	10	0	0	0	1	1	2	1	2	1	1	1	0
Walking Against Traffic	4	0	0	1	0	0	0	1	1	0	1	0	0
Standing	4	0	0	1	0	1	1	0	0	1	0	0	0
Lying	7	0	0	0	0	1	3	2	1	0	0	0	0
Getting on/off Vehicle	1	0	0	0	0	0	0	0	1	0	0	0	0
Working on/pushing Veh	3	0	0	0	0	0	1	0	0	2	0	0	0
Working on Road	0	0	0	0	0	0	0	0	0	0	0	0	0
Other	10	1	0	1	0	2	0	1	2	2	1	0	0
Unknown	29	1	1	0	4	6	4	4	3	2	2	2	0
TOTAL	155	2	3	6	8	15	18	17	29	26	21	10	0

Table 7 - 5

Pedestrians Injured by Age and Action

Pedestrian Action	Total	Age Group of Pedestrian											
		0-4	5-9	10-14	15-19	20-24	25-34	35-44	45-54	55-64	65-74	75 & Older	Unknown
Crossing Road	687	15	42	66	90	62	89	90	96	71	26	23	17
Walking With Traffic	58	1	1	3	6	9	9	6	5	12	0	4	2
Walking Against Traffic	66	2	1	11	8	6	8	9	7	4	2	5	3
Standing	75	3	0	5	2	5	17	11	12	4	2	1	13
Lying	3	1	0	0	0	1	1	0	0	0	0	0	0
Getting on/off Vehicle	5	1	0	0	1	1	1	0	0	1	0	0	0
Working on/pushing Veh	7	0	0	0	1	2	1	1	2	0	0	0	0
Working on Road	4	0	0	0	0	0	0	1	3	0	0	0	0
Other	263	8	8	28	42	34	31	27	39	20	11	10	5
Unknown	68	2	1	2	6	5	11	9	7	10	2	1	12
TOTAL	1,236	33	53	115	156	125	168	154	171	122	43	44	52

Table 7 - 6

Pedestrian Physical Condition in Motor Vehicle Crashes

Type of Condition	Number of Pedestrians							
	Total	Percent of Total	In Fatal Crashes	Percent of Fatal	In Injury Crashes	Percent of Injury	In PDO Crashes	Percent of PDO
No Apparent Influence	1,040	68.15%	36	21.69%	916	73.99%	88	72.13%
Had Been Drinking	203	13.30%	56	33.73%	135	10.90%	12	9.84%
Appeared to be Under the Influence of Drugs*	9	0.59%	5	3.01%	3	0.24%	1	0.82%
Medications	1	0.07%	0	0.00%	1	0.08%	0	0.00%
Illness	3	0.20%	1	0.60%	2	0.16%	0	0.00%
Physical Impairment	9	0.59%	0	0.00%	6	0.48%	3	2.46%
Fell Asleep or Fatigued	0	0.00%	0	0.00%	0	0.00%	0	0.00%
Other	23	1.51%	2	1.20%	20	1.62%	1	0.82%
Unknown	238	15.60%	66	39.76%	155	12.52%	17	13.93%
TOTAL	1,526	100.00%	166	100.00%	1,238	100.00%	122	100.00%

*Illegal drugs or narcotics

Section 7: – Pedestrian and Pedalcyclist Crashes

Table 7 - 7

Lighting Conditions in Pedestrian Crashes

Type of Lighting Conditions	Number of Crashes			
	Total	Fatal	Injury	PDO
Daylight	777	26	685	66
Dawn	29	5	21	3
Dusk	53	3	43	7
Dark - Lighted	366	45	296	25
Dark - Not Lighted	149	38	99	12
Dark - Unknown Lighting	75	39	34	2
TOTAL	1,449	156	1,178	115

Table 7 - 8

Weather Conditions in Pedestrian Crashes

Type of Weather Conditions	Number of Crashes			
	Total	Fatal	Injury	PDO
Clear	1,205	103	1,008	94
Cloudy	135	15	105	15
Sleet/Hail	1	0	1	0
Rain	63	5	54	4
Snow	5	0	4	1
Severe Crosswinds	0	0	0	0
Blowing Sand, Soil, Dirt	1	1	0	0
Fog, Smog, Smoke	1	0	1	0
Blowing Snow	1	1	0	0
Other	0	0	0	0
Unknown	37	31	5	1
TOTAL	1,449	156	1,178	115

Table 7 - 9

Pedalcyclists Killed and Injured by Age and Gender

Age Group	Pedalcyclists Killed			Pedalcyclists Injured			
	Total	Male	Female	Total	Male	Female	Gender Unknown
0-4	0	0	0	1	0	1	0
5-9	0	0	0	47	29	18	0
10-14	2	0	2	212	171	41	0
15-19	0	0	0	234	165	69	0
20-24	0	0	0	205	148	57	0
25-34	2	2	0	221	154	67	0
35-44	2	2	0	201	152	49	0
45-54	6	5	1	227	182	45	0
55-64	4	4	0	138	118	20	0
65-74	1	1	0	47	38	9	0
75 & Older	2	2	0	19	16	3	0
Unknown	0	0	0	31	17	4	10
TOTAL	19	16	3	1,583	1,190	383	10

Table 7 - 10

Pedalcycle Crashes by Geographic Location

Category	Total	Urban	Percent of Total	Rural	Percent of Total
Total Crashes	1,914	1,774	92.69%	140	7.31%
Fatal Crashes	19	17	89.47%	2	10.53%
Injury Crashes	1,569	1,457	92.86%	112	7.14%
PDO Crashes	326	300	92.02%	26	7.98%
Pedalcyclists Killed	19	17	89.47%	2	10.53%
Pedalcyclists Injured	1,583	1,471	92.92%	112	7.08%

Table 7 - 11

Pedalcycle Crash History

Year	Pedalcycle Crashes	Percent of all Crashes	Pedalcyclists Killed	Percent of all Fatalities	Pedalcyclists Injured	Percent of all Injuries
2006	1,886	1.31%	29	2.23%	1,559	2.23%
2007	1,922	1.36%	21	1.96%	1,606	2.43%
2008	2,006	1.66%	19	2.03%	1,697	3.00%
2009	2,000	1.87%	25	3.10%	1,648	3.25%
2010	1,914	1.80%	19	2.49%	1,583	3.16%

Table 7 - 12

Lighting Conditions in Pedalcyclist Crashes

Type of Lighting Conditions	Number of Crashes			
	Total	Fatal	Injury	PDO
Daylight	1,487	9	1,234	244
Dawn	42	1	33	8
Dusk	61	1	49	11
Dark - Lighted	264	5	205	54
Dark - Not Lighted	43	2	33	8
Dark - Unknown Lighting	17	1	15	1
TOTAL	1,914	19	1,569	326

Table 7 - 13

Weather Conditions in Pedalcyclist Crashes

Type of Weather Conditions	Number of Crashes			
	Total	Fatal	Injury	PDO
Clear	1,692	16	1,392	284
Cloudy	162	1	128	33
Sleet/Hail	0	0	0	0
Rain	34	1	29	4
Snow	1	0	0	1
Severe Crosswinds	0	0	0	0
Blowing Sand, Soil, Dirt	1	0	1	0
Fog, Smog, Smoke	0	0	0	0
Blowing Snow	0	0	0	0
Other	0	0	0	0
Unknown	24	1	19	4
TOTAL	1,914	19	1,569	326

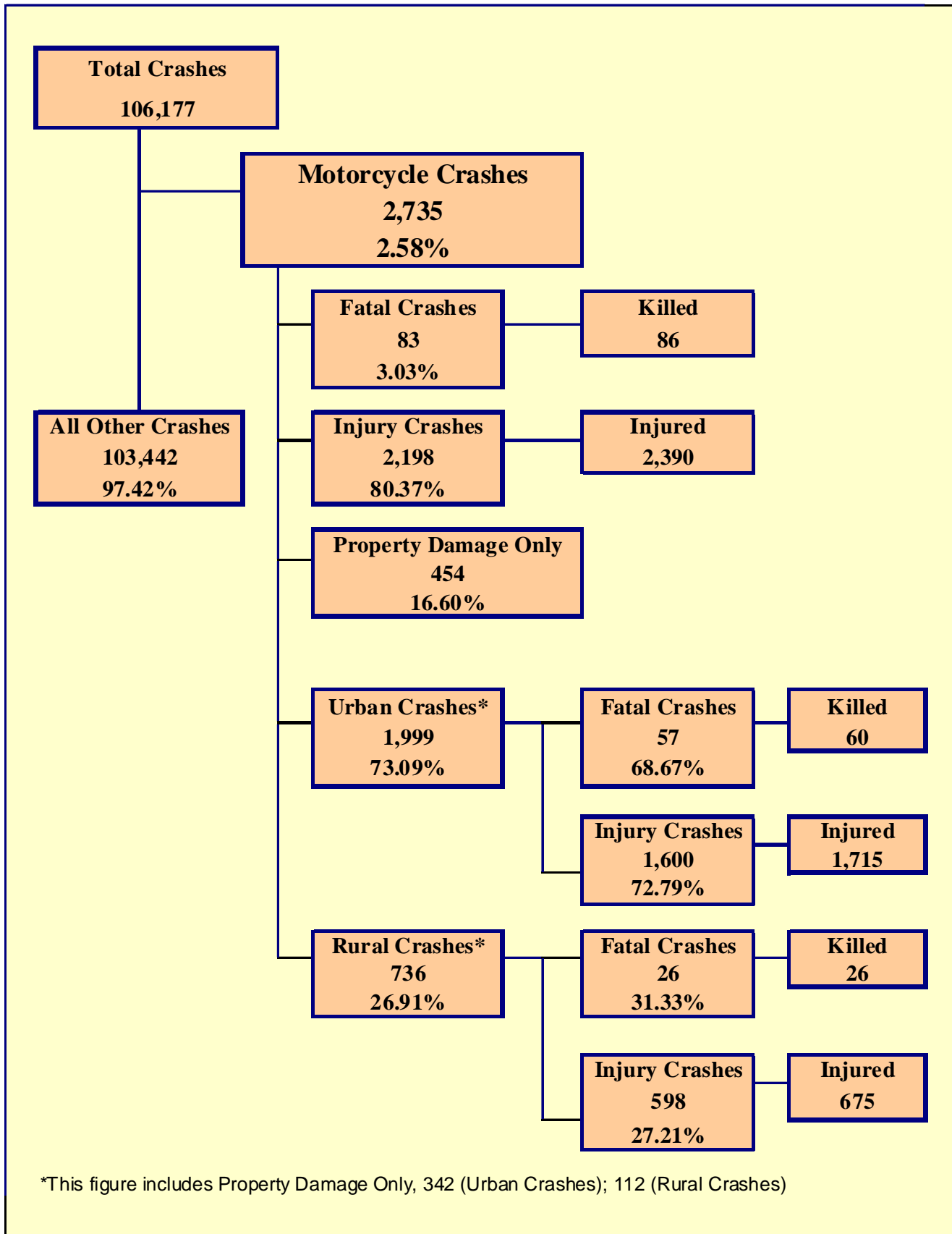


Chart 8 - 1

MC Fatalities by Year

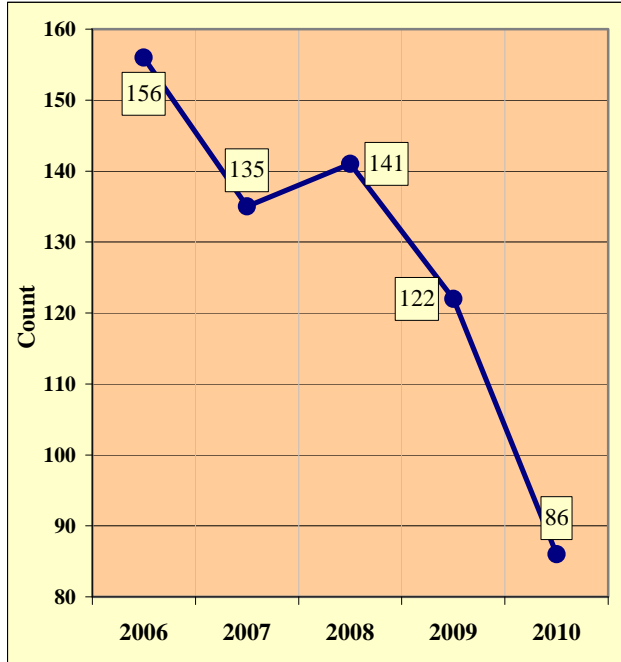
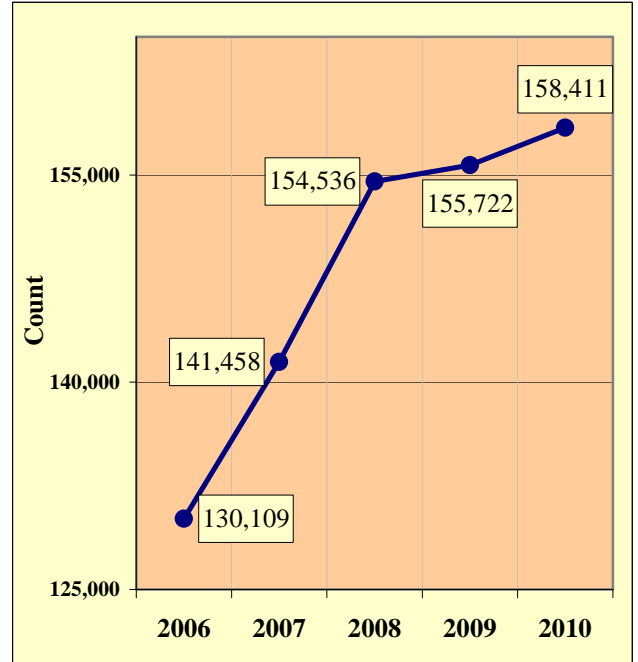


Chart 8 - 2

MC Registrations in Arizona



Total Point-in-Time of Registered Motorcycles at the end of Calendar year 2010.

(Source: MVD - MV988 MV630419 Currently Registered Vehicles by County Listing (motorcycle sub category), reports dated 12/31/10.)

Chart 8 - 3

Fatality Rate per Registered MC

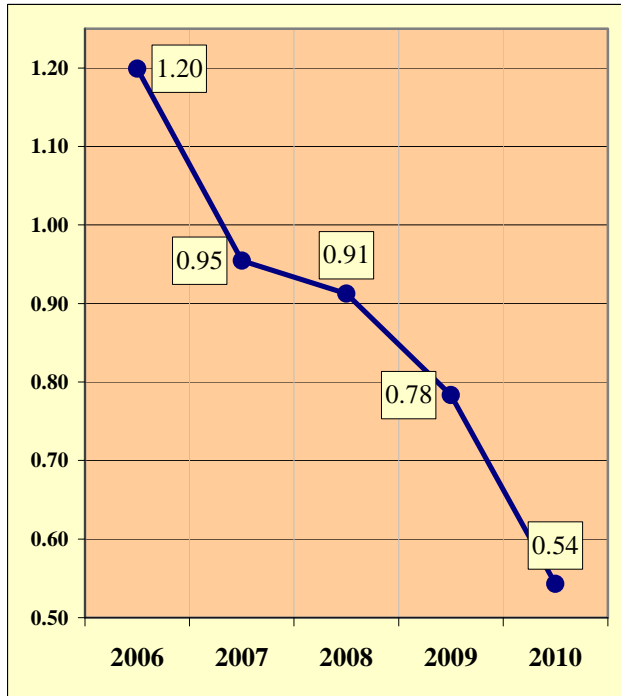
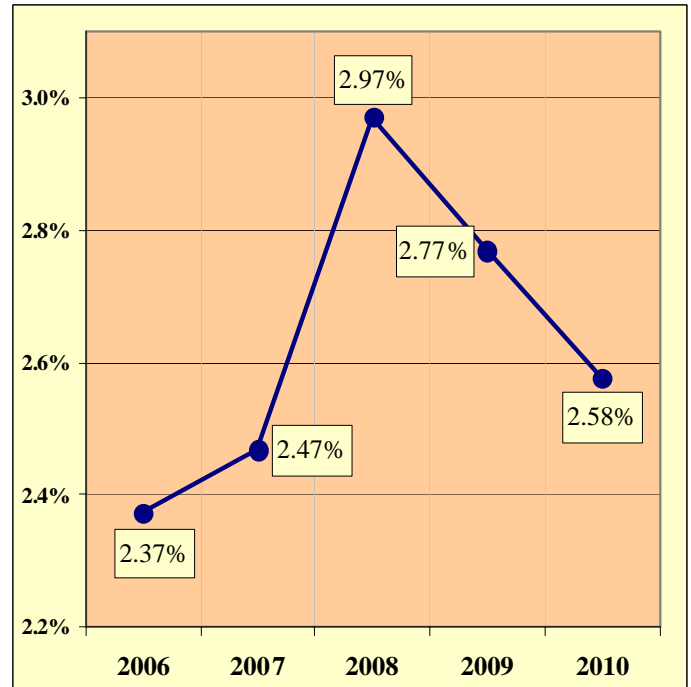


Chart 8 - 4

Percent of MC Crashes to All Crashes



Section 8: – Motorcycle (MC) Crashes

Table 8 - 1

MC Crashes by First Harmful Event

First Harmful Event Type	Number of Crashes			
	Total	Fatal	Injury	PDO
Collision with Motor Vehicle in Transport	1,390	42	1,039	309
Overtaking	326	11	291	24
Collision with Pedestrian	13	2	11	0
Collision with Pedalcyclist	7	0	7	0
Collision with Animal	32	0	26	6
Collision with Fixed Object	351	23	296	32
Collision with Non-fixed Object*	65	1	42	22
Vehicle Fire or Explosion	4	0	2	2
Other Non-collision**	422	3	385	34
Unknown	125	1	99	25
TOTAL	2,735	83	2,198	454
*Includes Collision with Parked Vehicles, Trains, Railway Vehicles, and Work Zone Equipment				
**Includes Vehicle Immersion, Jackknife, and Cargo Loss or Shift				

Table 8 - 2

Lighting Conditions in MC Crashes

Type of Lighting Conditions	Number of Crashes			
	Total	Fatal	Injury	PDO
Daylight	1,945	46	1,573	326
Dawn	38	1	26	11
Dusk	90	5	67	18
Dark - Lighted	488	10	396	82
Dark - Not Lighted	143	11	117	15
Dark - Unknown Lighting	31	10	19	2
TOTAL	2,735	83	2,198	454

Table 8 - 3

Road Surface Conditions in MC Crashes

Type of Road Surface Condition	Number of Operators			
	Total	In Fatal Crashes	In Injury Crashes	In PDO Crashes
Dry	2,654	86	2,127	441
Wet	73	1	59	13
Snow	1	0	1	0
Slush	2	0	2	0
Ice/Frost	2	0	1	1
Water (standing or moving)	1	0	1	0
Sand	7	0	7	0
Mud, Dirt, Gravel	31	0	27	4
Oil	6	1	5	0
Other	8	0	8	0
Unknown	25	9	15	1
TOTAL	2,810	97	2,253	460

Table 8 - 4

MC Crashes by Geographic Location

Category	Total	Urban	Percent of Total	Rural	Percent of Total
Total Crashes	2,735	1,999	73.09%	736	26.91%
Fatal Crashes	83	57	68.67%	26	31.33%
Injury Crashes	2,198	1,600	72.79%	598	27.21%
PDO Crashes	454	342	75.33%	112	24.67%
Persons Killed	86	60	69.77%	26	30.23%
Persons Injured	2,390	1,715	71.76%	675	28.24%

Table 8 - 5

Operator Involvement by Age in MC Crashes

Operator Age Group	Number of Operators							
	Total	Percent of Total	In Fatal Crashes	Percent of Fatal	In Injury Crashes	Percent of Injury	In PDO Crashes	Percent of PDO
15 & Under	15	0.53%	0	0.00%	14	0.62%	1	0.22%
16	10	0.36%	0	0.00%	10	0.44%	0	0.00%
17	15	0.53%	0	0.00%	13	0.58%	2	0.43%
18	44	1.57%	0	0.00%	37	1.64%	7	1.52%
19	60	2.14%	2	2.06%	54	2.40%	4	0.87%
20	70	2.49%	0	0.00%	58	2.57%	12	2.61%
21	71	2.53%	0	0.00%	55	2.44%	16	3.48%
22	81	2.88%	3	3.09%	67	2.97%	11	2.39%
23	74	2.63%	1	1.03%	61	2.71%	12	2.61%
24	79	2.81%	3	3.09%	63	2.80%	13	2.83%
25-34	555	19.75%	15	15.46%	446	19.80%	94	20.43%
35-44	531	18.90%	20	20.62%	427	18.95%	84	18.26%
45-54	595	21.17%	24	24.74%	477	21.17%	94	20.43%
55-64	392	13.95%	20	20.62%	315	13.98%	57	12.39%
65-74	149	5.30%	7	7.22%	123	5.46%	19	4.13%
75 & Older	14	0.50%	2	2.06%	8	0.36%	4	0.87%
Unknown	55	1.96%	0	0.00%	25	1.11%	30	6.52%
TOTAL	2,810	100.00%	97	100.00%	2,253	100.00%	460	100.00%

Table 8 - 6

MC Operator Physical Condition

Type of Condition	Number of Operators							
	Total	Percent of Total	In Fatal Crashes	Percent of Fatal	In Injury Crashes	Percent of Injury	In PDO Crashes	Percent of PDO
No Apparent Influence	2,412	85.84%	43	44.33%	1,948	86.46%	421	91.52%
Had Been Drinking	184	6.55%	27	27.84%	149	6.61%	8	1.74%
Appeared to be Under the Influence of Drugs*	11	0.39%	2	2.06%	9	0.40%	0	0.00%
Medications	3	0.11%	0	0.00%	3	0.13%	0	0.00%
Illness	14	0.50%	1	1.03%	12	0.53%	1	0.22%
Physical Impairment	3	0.11%	0	0.00%	2	0.09%	1	0.22%
Fell Asleep or Fatigued	5	0.18%	0	0.00%	5	0.22%	0	0.00%
Other	10	0.36%	1	1.03%	5	0.22%	4	0.87%
Unknown	168	5.98%	23	23.71%	120	5.33%	25	5.43%
TOTAL	2,810	100.00%	97	100.00%	2,253	100.00%	460	100.00%

* Illegal drugs or narcotics

Section 8: – Motorcycle (MC) Crashes

Table 8 - 7

MC Operators Involved in Fatal Crashes by License Status

License Status	2008		2009		2010	
	Number of Operators	Percent of Total	Number of Operators	Percent of Total	Number of Operators	Percent of Total
No license	3	2.11%	5	4.03%	3	3.09%
Invalid	21	14.79%	25	20.16%	14	14.43%
Valid	117	82.39%	91	73.39%	79	81.44%
Unknown	1	0.70%	3	2.42%	1	1.03%
TOTALS	142	100.00%	124	100.00%	97	100.00%
Note: Includes only motorcycle operators involved in fatal crashes.						
Source: FARS Data Queries						

Table 8 - 8

MC Operator's Helmet Use

Severity of Injury	Helmet Used	Percent of Total	Helmet Not Used	Percent of Total	Unknown	Percent of Total	Total	Percent of Total
No Injury	212	16.95%	104	13.92%	205	25.25%	521	18.54%
Unknown Injury	9	0.72%	3	0.40%	22	2.71%	34	1.21%
Possible Injury	210	16.79%	89	11.91%	154	18.97%	453	16.12%
Non-Incapacitating Injury	522	41.73%	301	40.29%	303	37.32%	1,126	40.07%
Incapacitating Injury	266	21.26%	211	28.25%	117	14.41%	594	21.14%
Fatal Injury	32	2.56%	39	5.22%	11	1.35%	82	2.92%
TOTALS	1,251	100.00%	747	100.00%	812	100.00%	2,810	100.00%

Table 8 - 9

MC Passenger's Helmet Use

Severity of Injury	Helmet Used	Percent of Total	Helmet Not Used	Percent of Total	Unknown	Percent of Total	Total	Percent of Total
No Injury	14	16.87%	7	6.73%	25	29.07%	46	16.85%
Unknown Injury	1	1.20%	1	0.96%	4	4.65%	6	2.20%
Possible Injury	11	13.25%	14	13.46%	12	13.95%	37	13.55%
Non-Incapacitating Injury	31	37.35%	48	46.15%	34	39.53%	113	41.39%
Incapacitating Injury	24	28.92%	32	30.77%	11	12.79%	67	24.54%
Fatal Injury	2	2.41%	2	1.92%	0	0.00%	4	1.47%
TOTALS	83	100.00%	104	100.00%	86	100.00%	273	100.00%

Table 8 - 10

MC Operators and Passengers Killed and Injured

Age of Victim	Persons Killed			Persons Injured			
	Total	Male	Female	Total	Male	Female	Gender Unknown
0-4	0	0	0	3	1	2	0
5-9	0	0	0	5	5	0	0
10-14	0	0	0	13	10	3	0
15-19	2	2	0	136	114	22	0
20-24	8	6	2	311	288	23	0
25-34	14	13	1	469	412	57	0
35-44	16	15	1	449	369	80	0
45-54	18	15	3	521	398	123	0
55-64	20	18	2	325	283	42	0
65-74	6	6	0	126	115	11	0
75 & Older	2	2	0	9	6	3	0
Unknown	0	0	0	23	17	4	2
TOTAL	86	77	9	2,390	2,018	370	2

Table 8 - 11

MC Operator Errors

Type of Violation or Behavior	Number of Operators							
	Total	Percent of Total	In Fatal Crashes	Percent of Fatal	In Injury Crashes	Percent of Injury	In PDO Crashes	Percent of PDO
No Improper Action	1,303	46.37%	32	32.99%	1,019	45.23%	252	54.78%
Speed too Fast for Conditions	667	23.74%	24	24.74%	566	25.12%	77	16.74%
Exceeded Lawful Speed	45	1.60%	3	3.09%	39	1.73%	3	0.65%
Failed to Yield Right-Of-Way	56	1.99%	1	1.03%	38	1.69%	17	3.70%
Followed Too Closely	68	2.42%	2	2.06%	43	1.91%	23	5.00%
Ran Stop Sign	11	0.39%	2	2.06%	6	0.27%	3	0.65%
Disregarded Traffic Signal	25	0.89%	2	2.06%	22	0.98%	1	0.22%
Made Improper Turn	22	0.78%	0	0.00%	19	0.84%	3	0.65%
Drove in Opposing Lane	29	1.03%	3	3.09%	22	0.98%	4	0.87%
Knowingly Operated with Faulty or Missing Equipment	8	0.28%	0	0.00%	8	0.36%	0	0.00%
Required Motorcycle Safety Equipment Not Used	9	0.32%	0	0.00%	8	0.36%	1	0.22%
Passed in No-Passing Zone	5	0.18%	0	0.00%	4	0.18%	1	0.22%
Unsafe Lane Change	29	1.03%	2	2.06%	19	0.84%	8	1.74%
Failed to Keep in Proper Lane	64	2.28%	6	6.19%	55	2.44%	3	0.65%
Disregarded Pavement Markings	4	0.14%	0	0.00%	2	0.09%	2	0.43%
Other Unsafe Passing	27	0.96%	1	1.03%	23	1.02%	3	0.65%
Inattention/Distraction	157	5.59%	3	3.09%	128	5.68%	26	5.65%
Electronic Communications Device	0	0.00%	0	0.00%	0	0.00%	0	0.00%
Other	84	2.99%	2	2.06%	72	3.20%	10	2.17%
Unknown	197	7.01%	14	14.43%	160	7.10%	23	5.00%
TOTAL	2,810	100.00%	97	100.00%	2,253	100.00%	460	100.00%

Section 8: – Motorcycle (MC) Crashes

Chart 8 - 5

All MC Crashes vs. Fatal MC Crashes by Time of Day - Weekdays

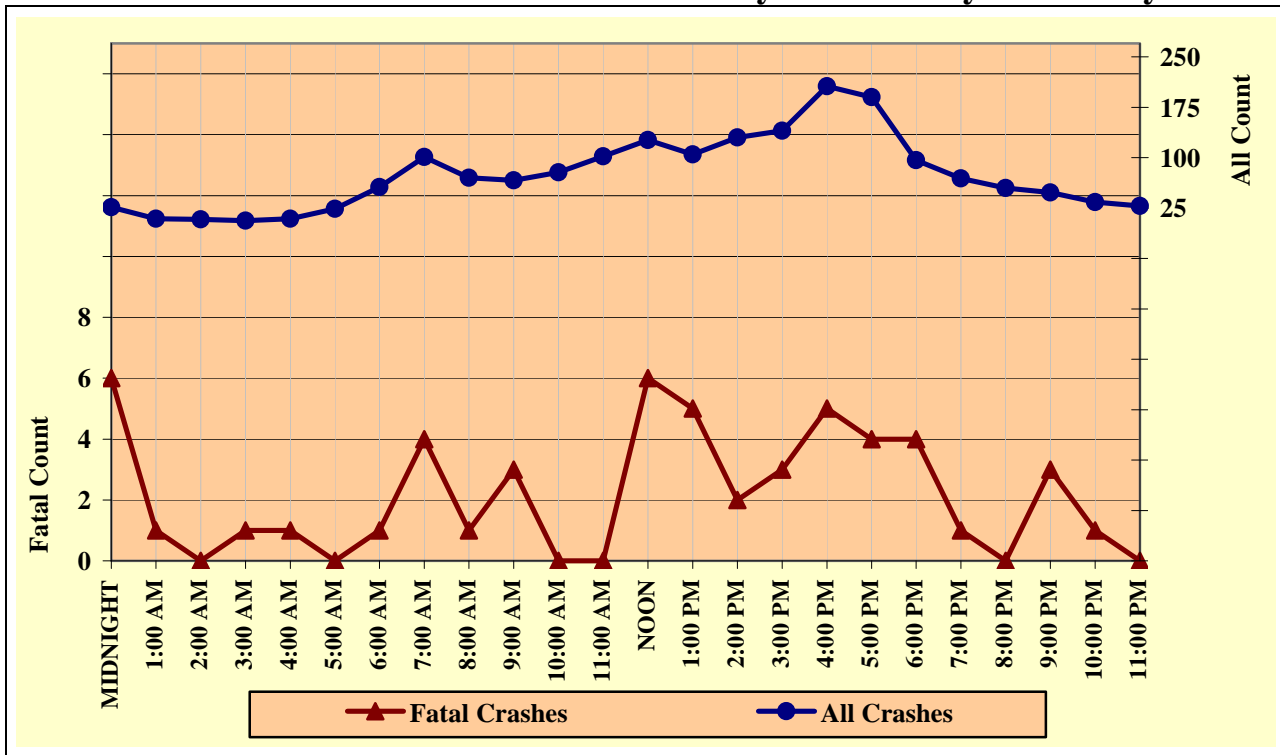


Chart 8 - 6

All MC Crashes vs. Fatal MC Crashes by Time of Day - Weekends

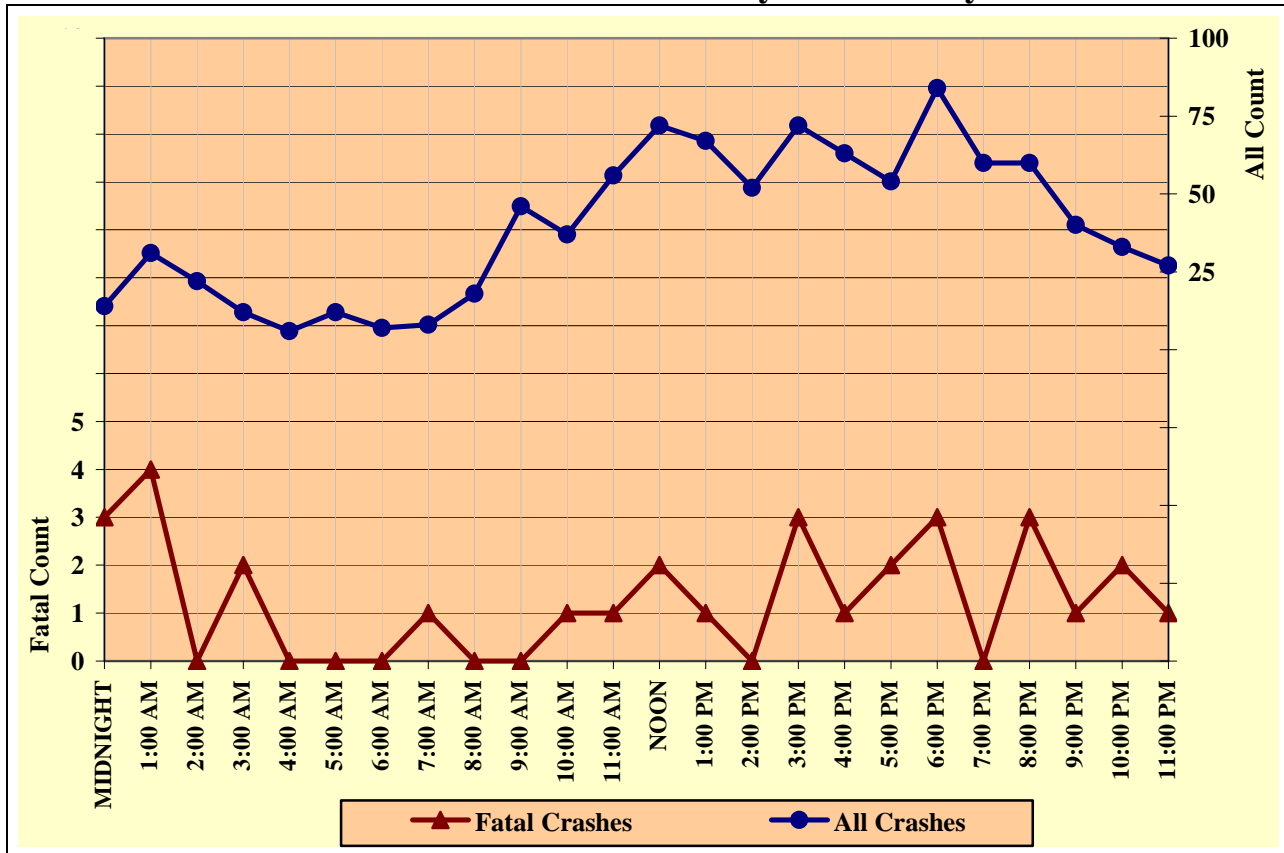


Chart 8 - 7

All MC Crashes vs. Fatal MC Crashes by Day of Week

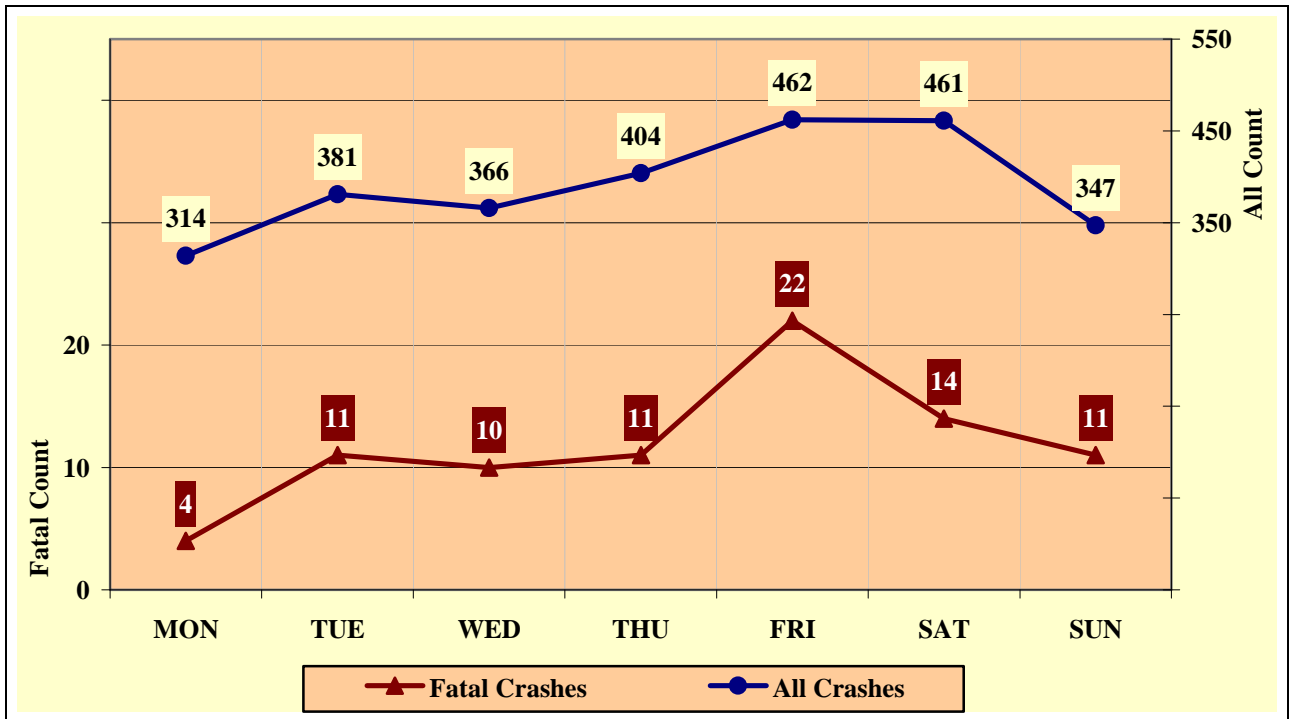
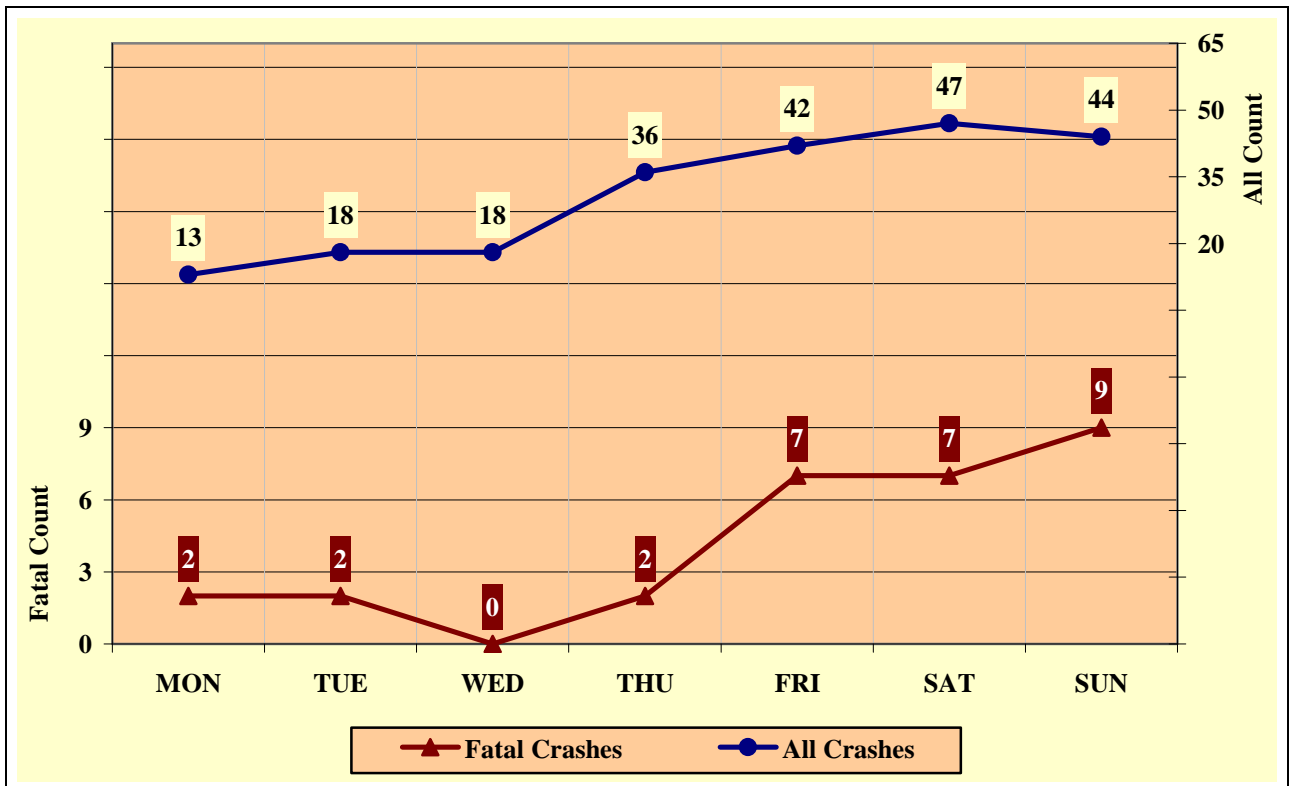


Chart 8 - 8

Alcohol Related MC Crashes vs. Fatal Alcohol Related MC Crashes by Day of Week



Section 8: – Motorcycle (MC) Crashes

Table 8 - 12

MC Crashes by Hour and Day of Week

Hour Beginning	Total Crashes		Monday		Tuesday		Wednesday		Thursday		Friday		Saturday		Sunday		Weekdays		Weekends	
	All	Fatal	All	Fatal	All	Fatal	All	Fatal	All	Fatal	All	Fatal	All	Fatal	All	Fatal	All	Fatal	All	Fatal
MIDNIGHT	40	9	2	0	6	1	5	1	6	1	9	3	7	3	5	0	26	6	14	3
1:00 AM	40	5	2	0	2	1	3	0	2	0	2	0	13	1	16	3	9	1	31	4
2:00 AM	30	0	2	0	0	0	3	0	1	0	4	0	7	0	13	0	8	0	22	0
3:00 AM	18	3	1	0	2	0	2	0	1	0	1	1	3	1	8	1	6	1	12	2
4:00 AM	15	1	0	0	4	0	2	1	3	0	0	0	5	0	1	0	9	1	6	0
5:00 AM	36	0	8	0	7	0	7	0	4	0	6	0	3	0	1	0	24	0	12	0
6:00 AM	63	1	10	0	16	1	13	0	10	0	7	0	4	0	3	0	56	1	7	0
7:00 AM	109	5	13	2	26	0	18	0	20	1	24	1	6	1	2	0	101	4	8	1
8:00 AM	88	1	10	0	12	0	16	0	14	0	18	1	9	0	9	0	70	1	18	0
9:00 AM	112	3	12	0	16	1	11	1	13	1	14	0	19	0	27	0	66	3	46	0
10:00 AM	115	1	18	0	12	0	11	0	15	0	22	0	22	1	15	0	78	0	37	1
11:00 AM	158	1	20	0	15	0	23	0	28	0	16	0	34	0	22	1	102	0	56	1
NOON	198	8	18	0	24	0	21	2	31	3	32	1	43	2	29	0	126	6	72	2
1:00 PM	172	6	19	0	23	1	16	0	23	1	24	3	37	1	30	0	105	5	67	1
2:00 PM	182	2	25	0	20	0	30	2	22	0	33	0	34	0	18	0	130	2	52	0
3:00 PM	212	6	25	0	30	1	23	0	30	1	32	1	41	1	31	2	140	3	72	3
4:00 PM	269	6	36	0	39	1	40	0	41	0	50	4	38	1	25	0	206	5	63	1
5:00 PM	244	6	27	0	44	2	37	0	44	1	38	1	30	0	24	2	190	4	54	2
6:00 PM	180	7	16	1	25	2	29	1	26	0	33	2	27	1	24	0	96	4	84	3
7:00 PM	129	1	14	0	20	0	20	1	15	0	26	0	20	0	14	0	69	1	60	0
8:00 PM	115	3	15	0	12	0	13	0	15	0	23	1	25	1	12	1	55	0	60	3
9:00 PM	88	4	11	1	9	0	9	0	19	2	16	0	15	0	9	1	48	3	40	1
10:00 PM	67	3	6	0	8	0	7	1	13	0	19	2	9	0	5	0	34	1	33	2
11:00 PM	55	1	4	0	9	0	7	0	8	0	13	1	10	0	4	0	28	0	27	1
TOTAL	2,735	83	314	4	381	11	366	10	404	11	462	22	461	14	347	11	1,782	52	953	31

Crashes during Weekends accounted for 34.84% of all MC crashes and 37.35% of Fatal MC Crashes.

Crashes during Weekdays accounted for 65.16% of all MC crashes and 62.65% of Fatal MC Crashes.

Acknowledgements

Special gratitude to our other providers of data and information including:

The National Center for Statistics and Analysis, Research and Development

National Highway Transportation Safety Administration

The Arizona State Data Center, Arizona Department of Economic Security

*The Office of Planning, Evaluation, and Public Health Statistics, Arizona
Department of Health Services*

The Information Technology Group, Arizona Department of Transportation

The National Safety Council