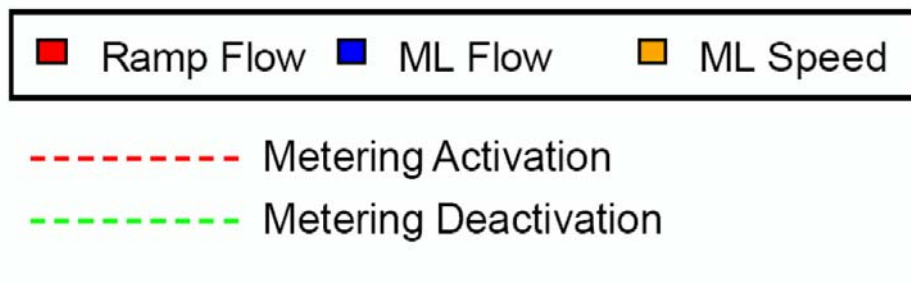


# Appendix Online 5: I- 205 NB Ramp Flow & ML Speed- Flow Plots

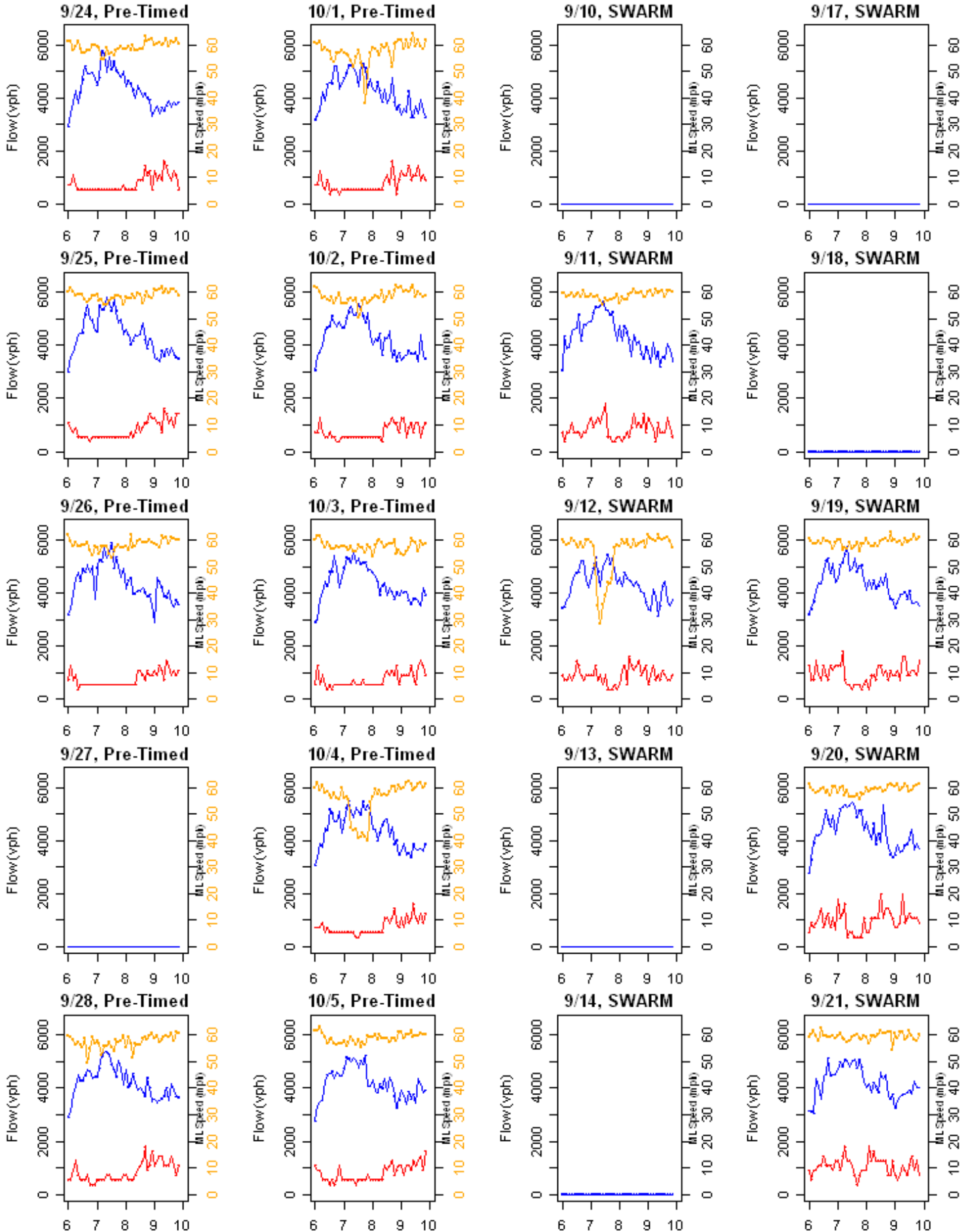
AM Peak

SWARM: 9/10 –9/21/2007

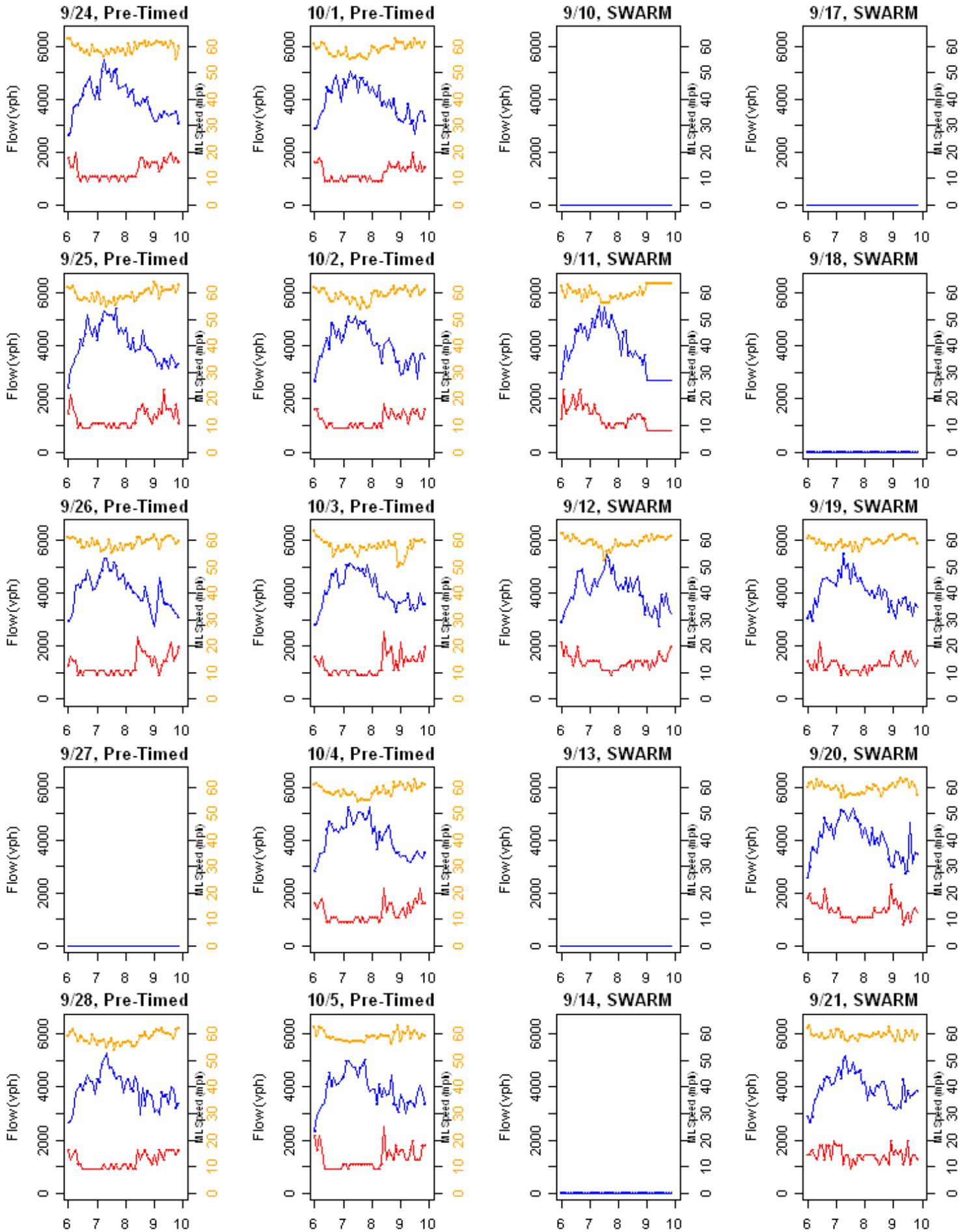
Pre-Timed: 9/24 –10/5/2007



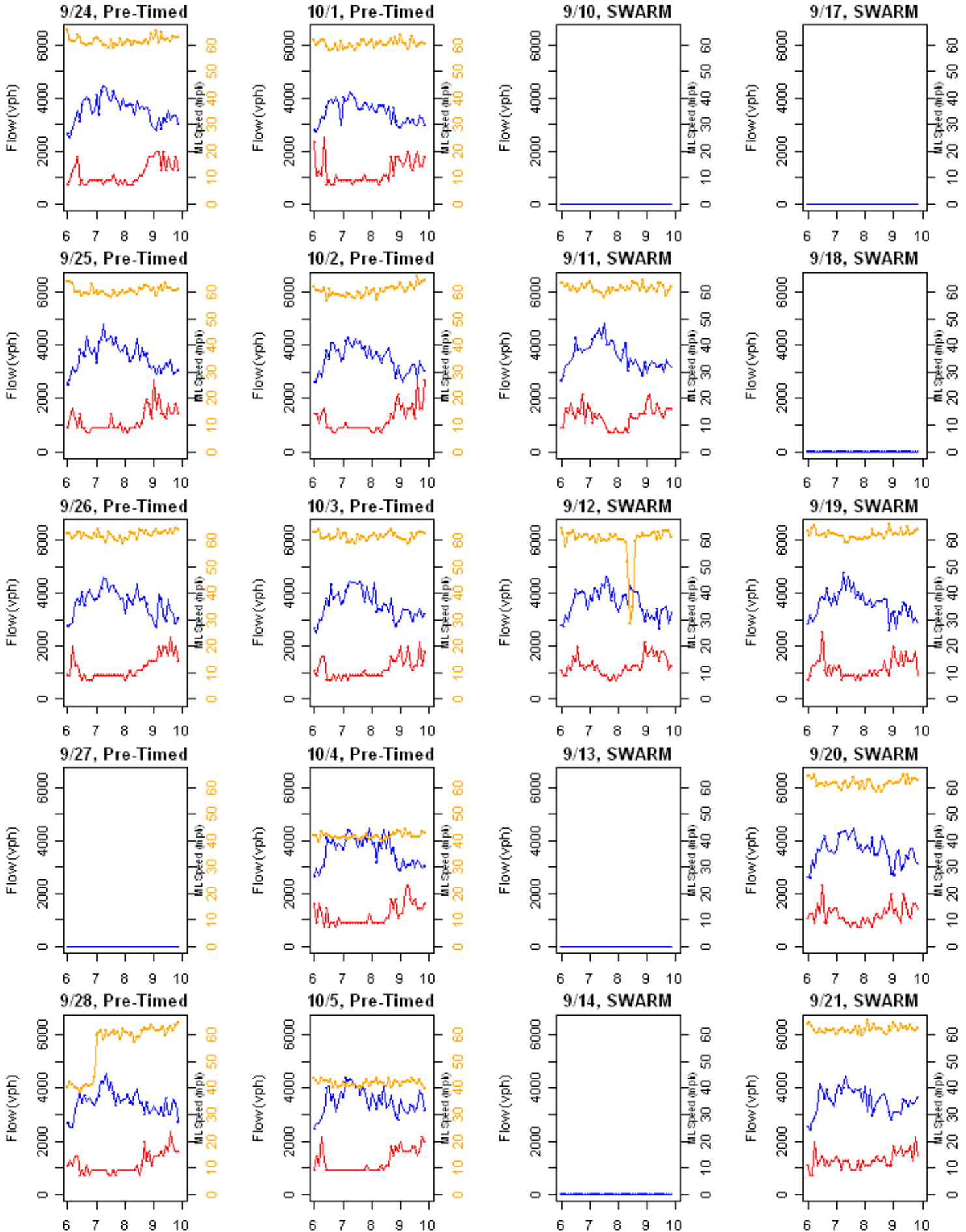
# I-205 NB, Gladstone MP 11.05, 6-10 am



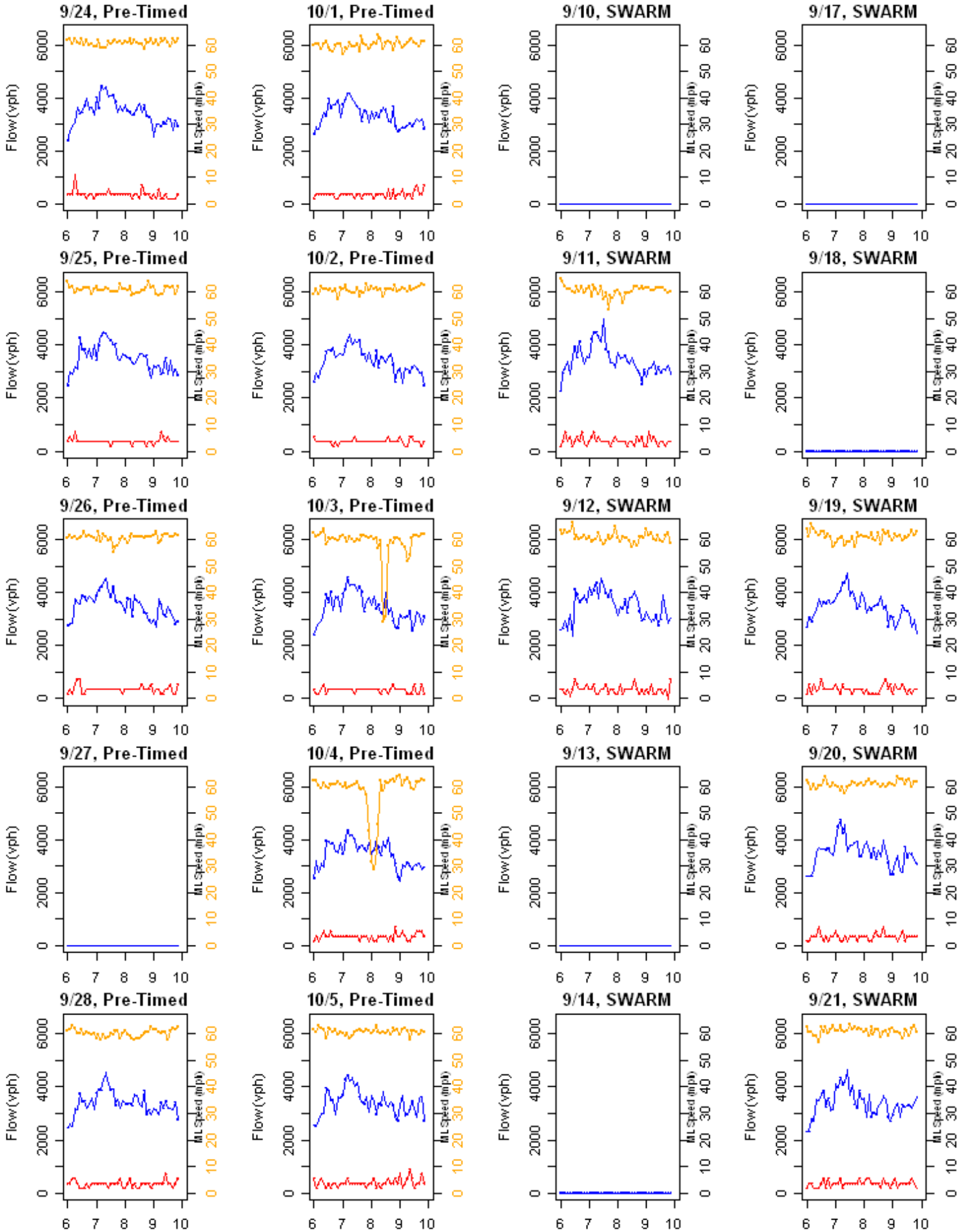
# I-205 NB, Clackamas Hwy MP 12.94, 6-10 am



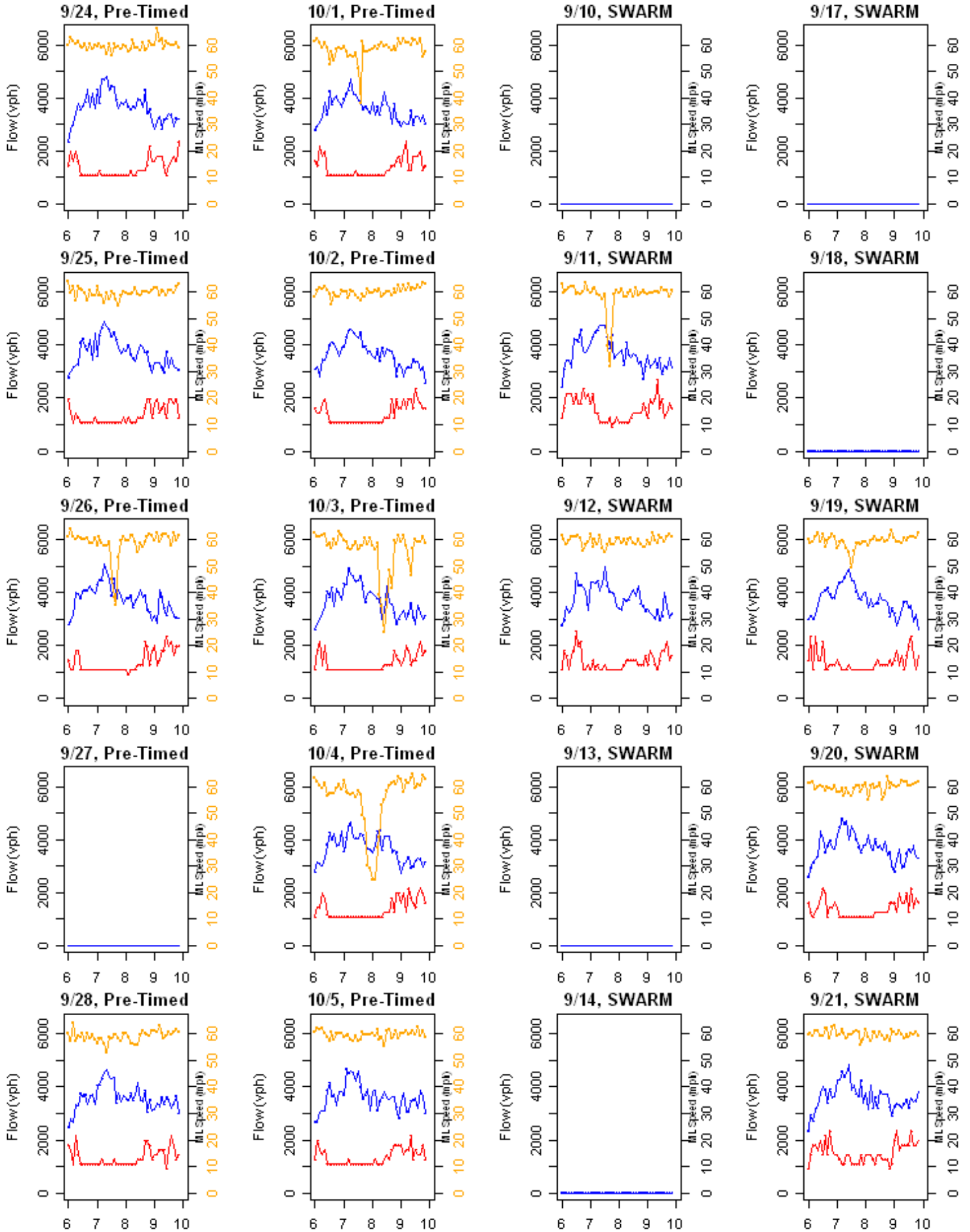
# I-205 NB, Lawnfield MP 13.58, 6-10 am



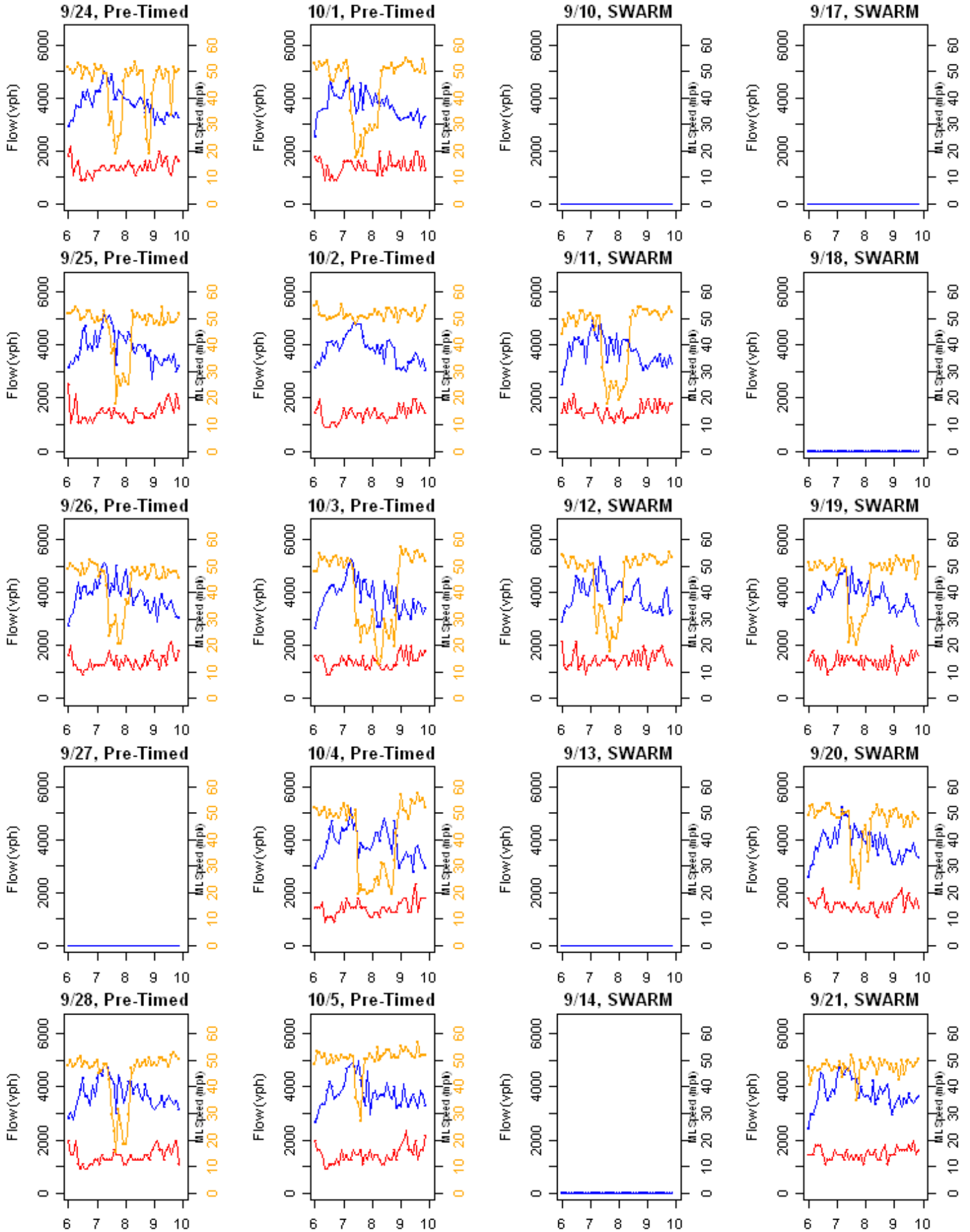
# I-205 NB, Sunnybrook MP 14.32, 6-10 am



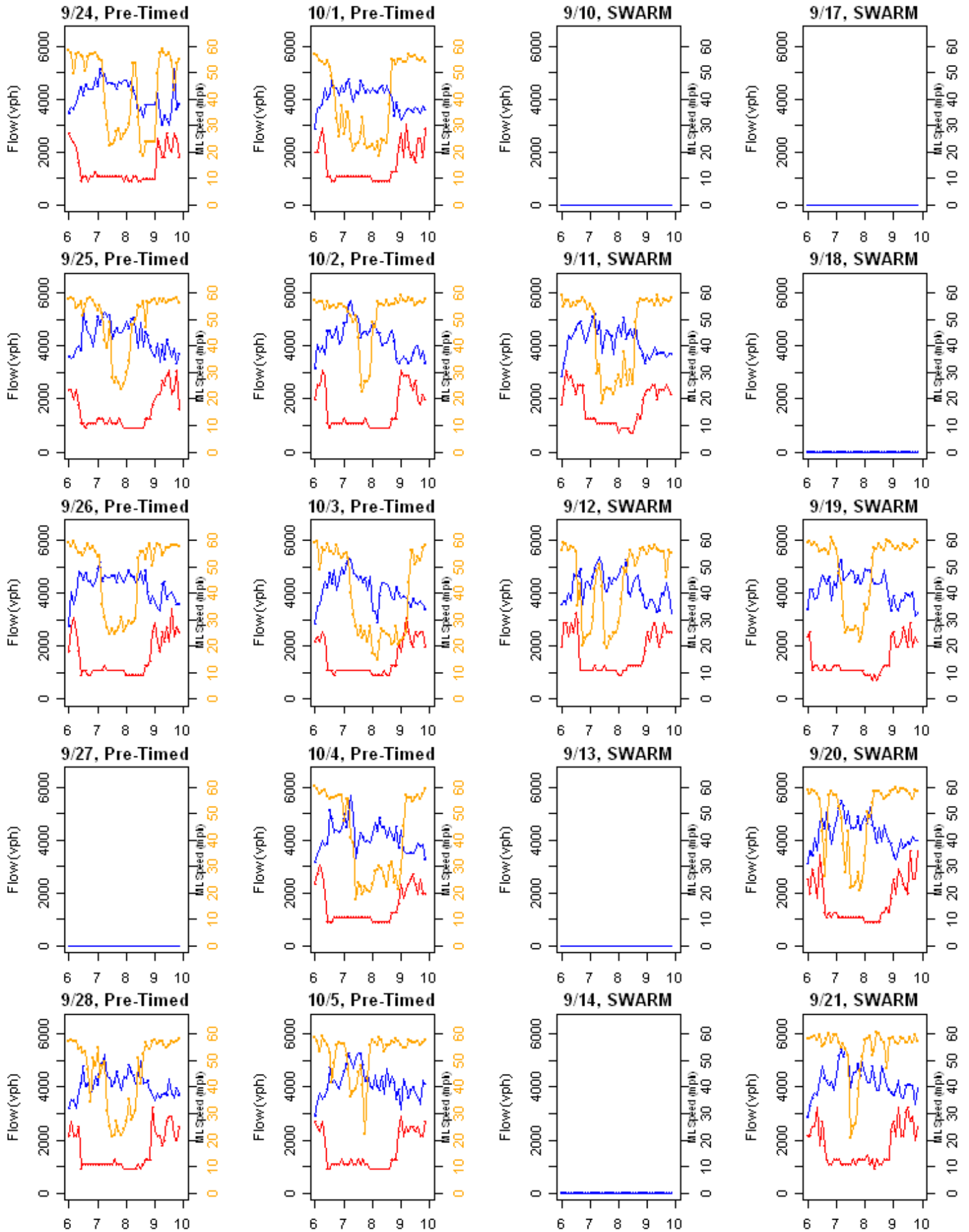
# I-205 NB, Sunnyside MP 14.7, 6-10 am



# I-205 NB, Johnson Creek MP 16.2, 6-10 am

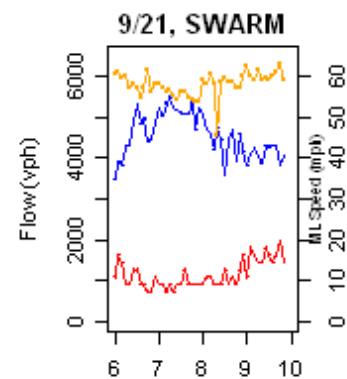
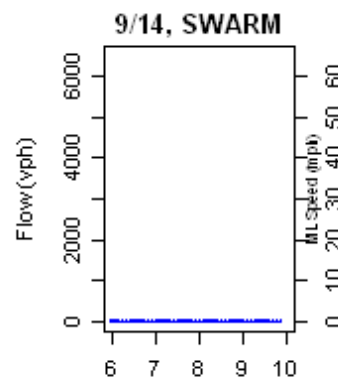
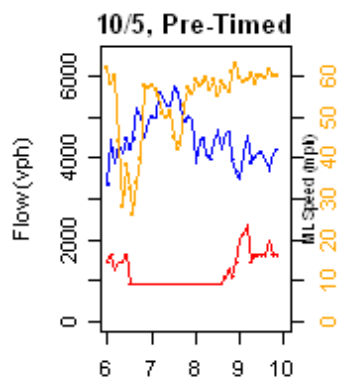
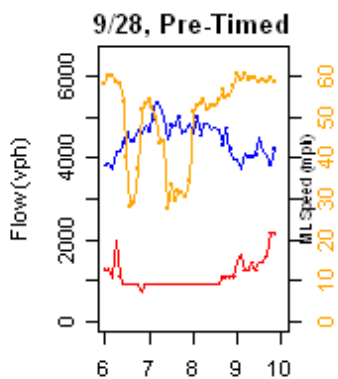
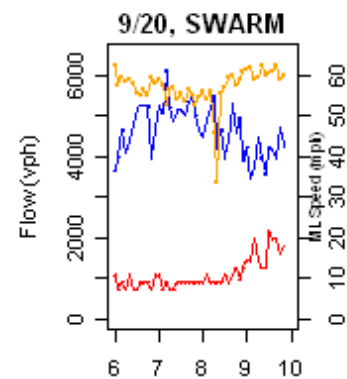
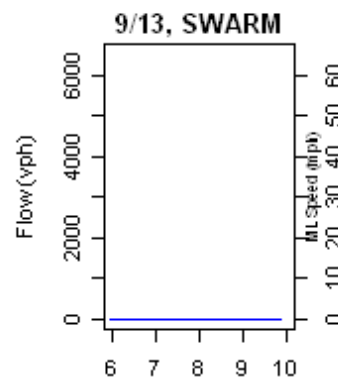
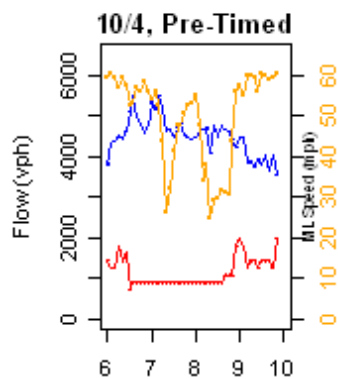
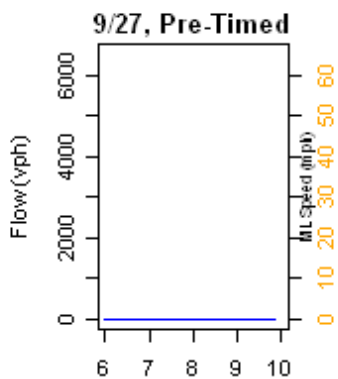
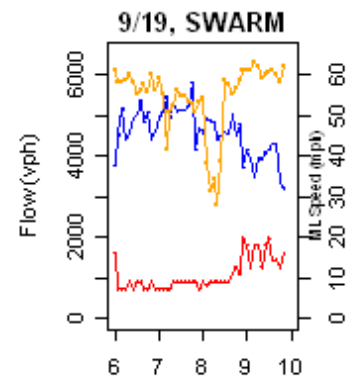
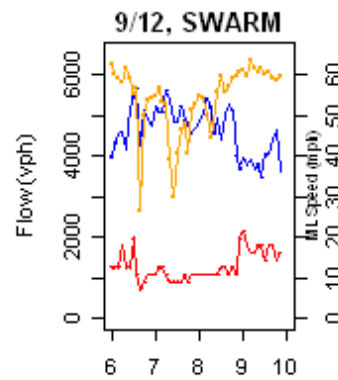
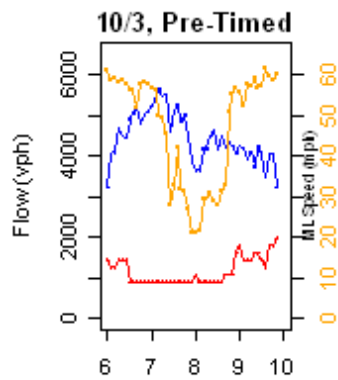
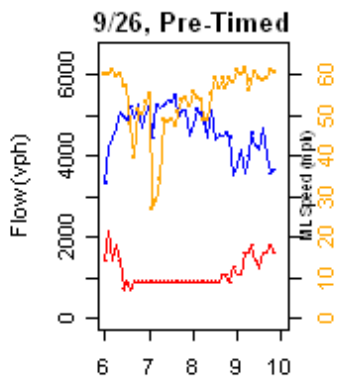
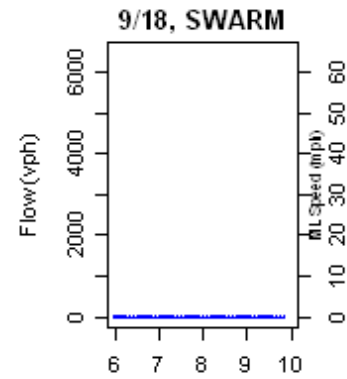
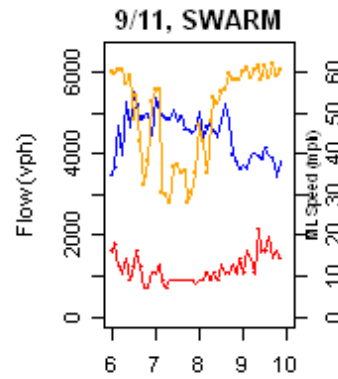
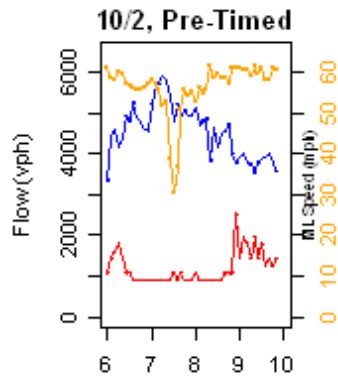
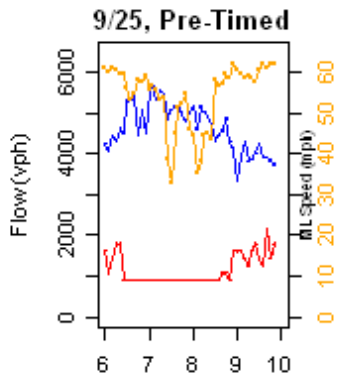
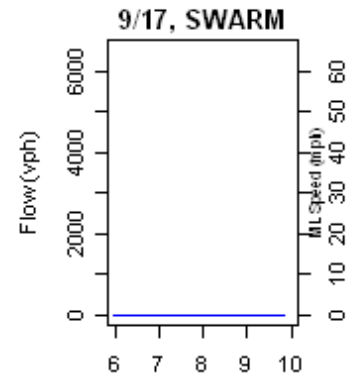
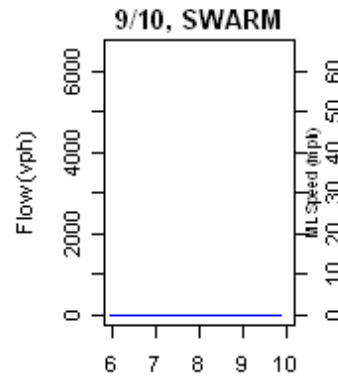
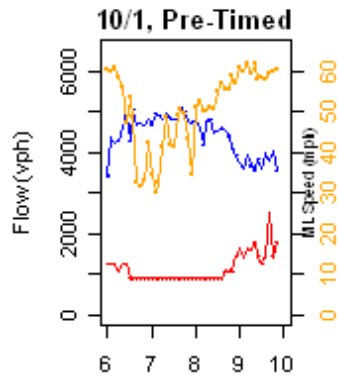
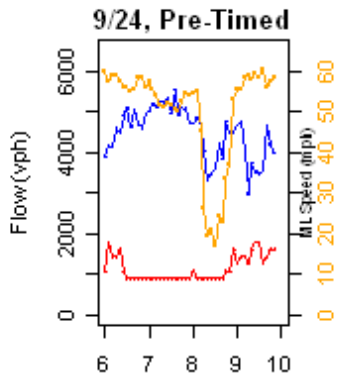


# I-205 NB, Foster MP 18.1, 6-10 am

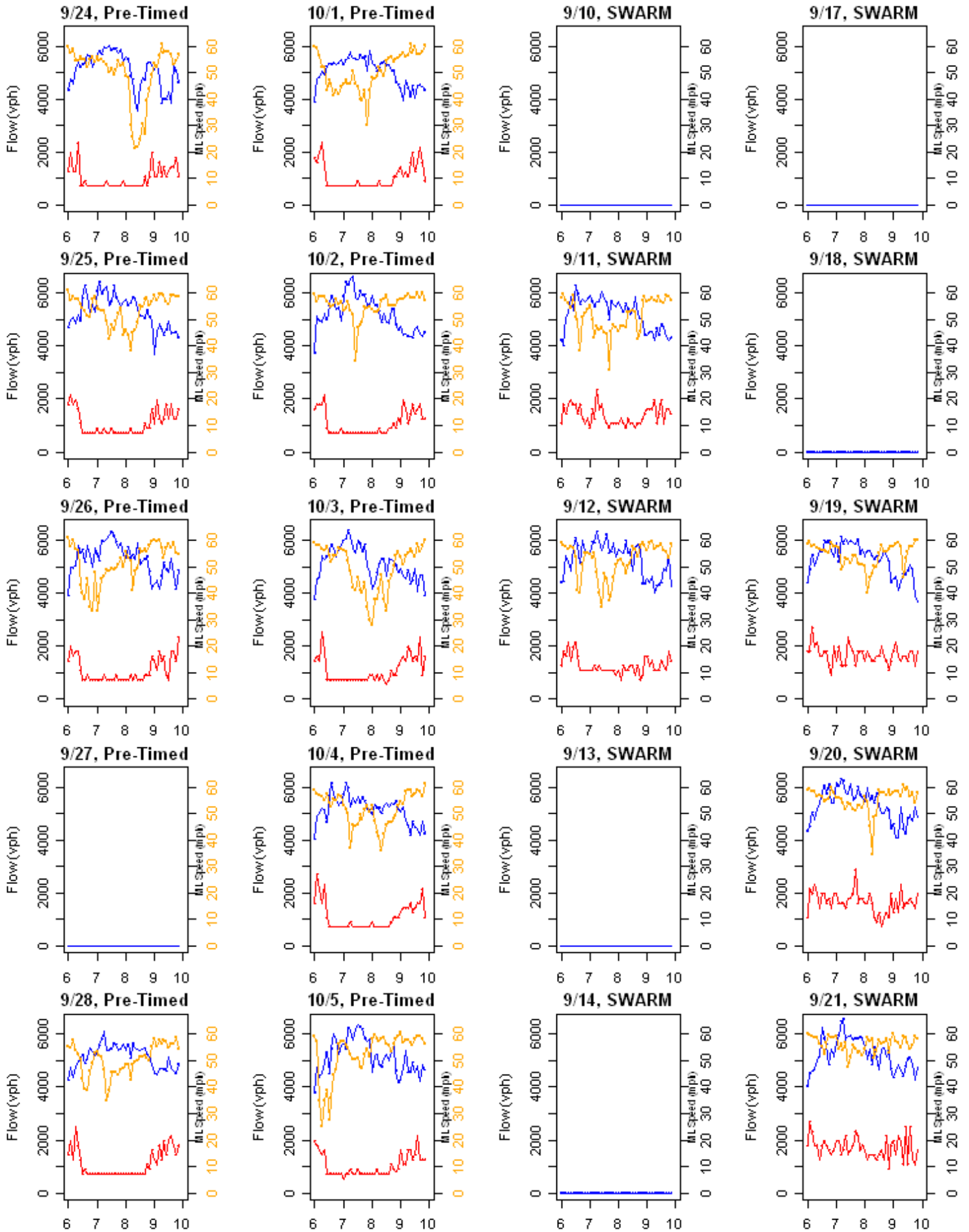




# I-205 NB, Powell MP 19.4, 6-10 am



# I-205 NB, Division MP 19.78, 6-10 am



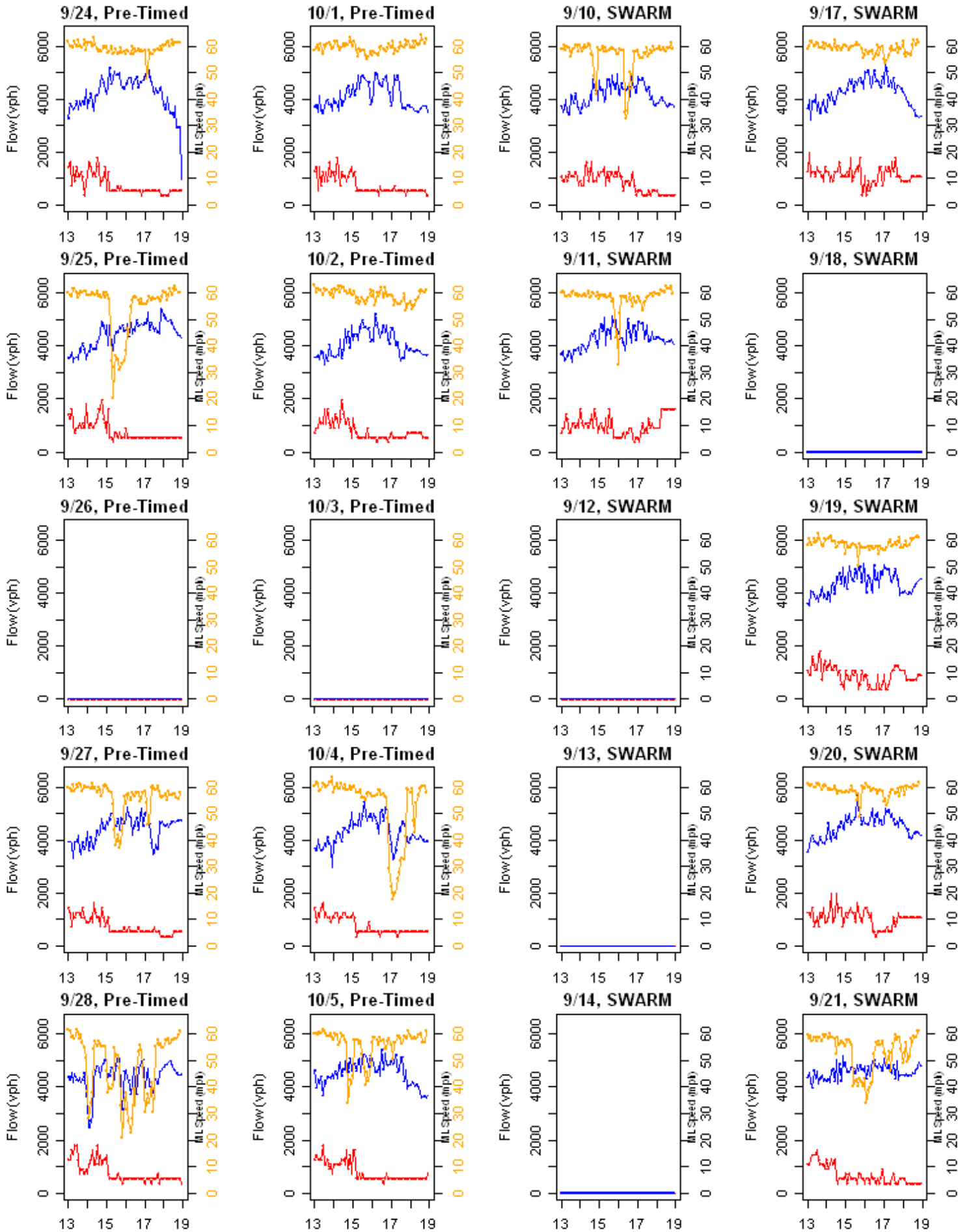
# I-205 NB

# Speed-Occupancy Plots

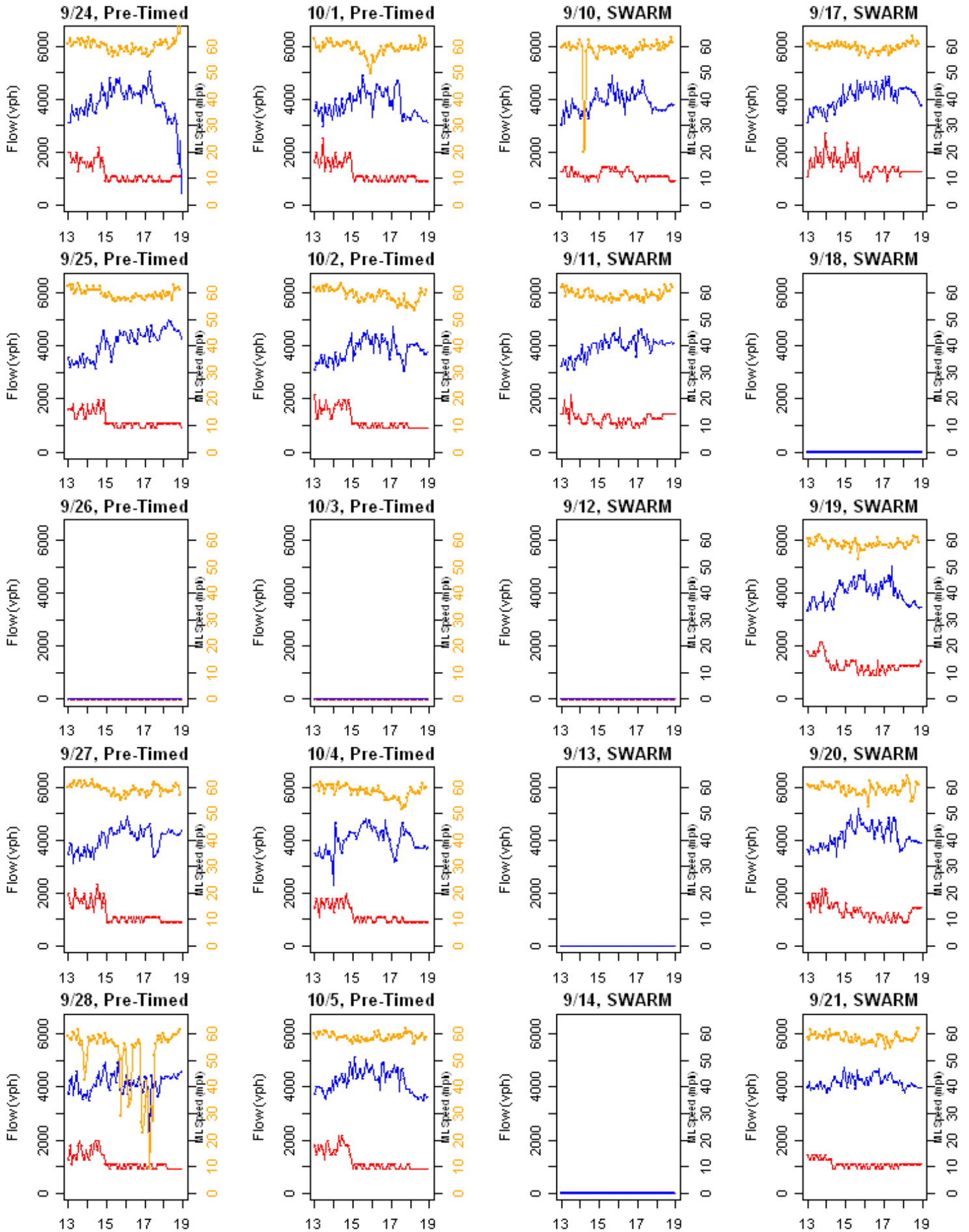
PM Peak

SWARM: 9/10 – 9/21  
Pre-Timed: 9/24 – 10/5

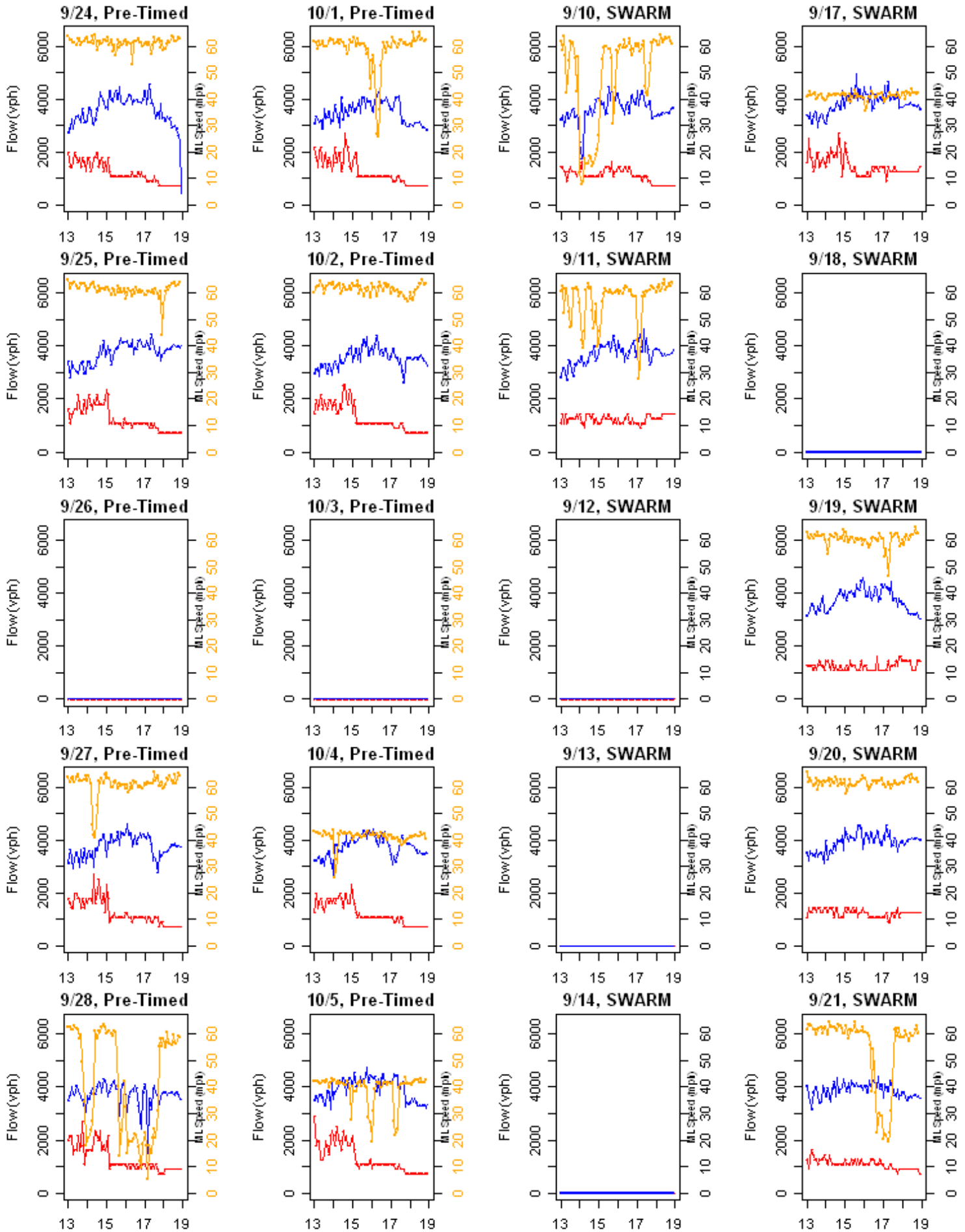
# I-205 NB, Gladstone MP 11.05, 1-7 pm



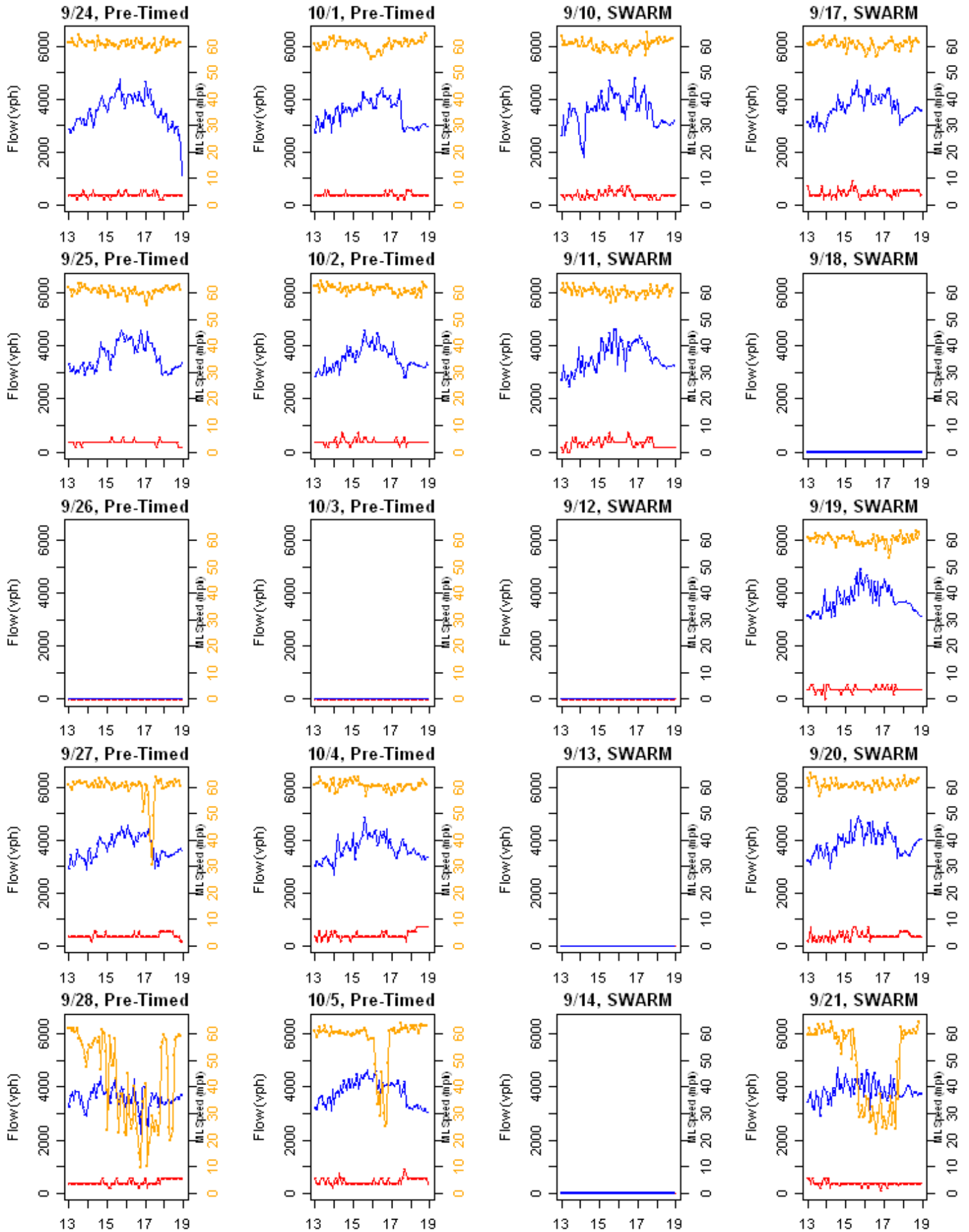
# I-205 NB, Clackamas Hwy MP 12.94, 1-7 pm



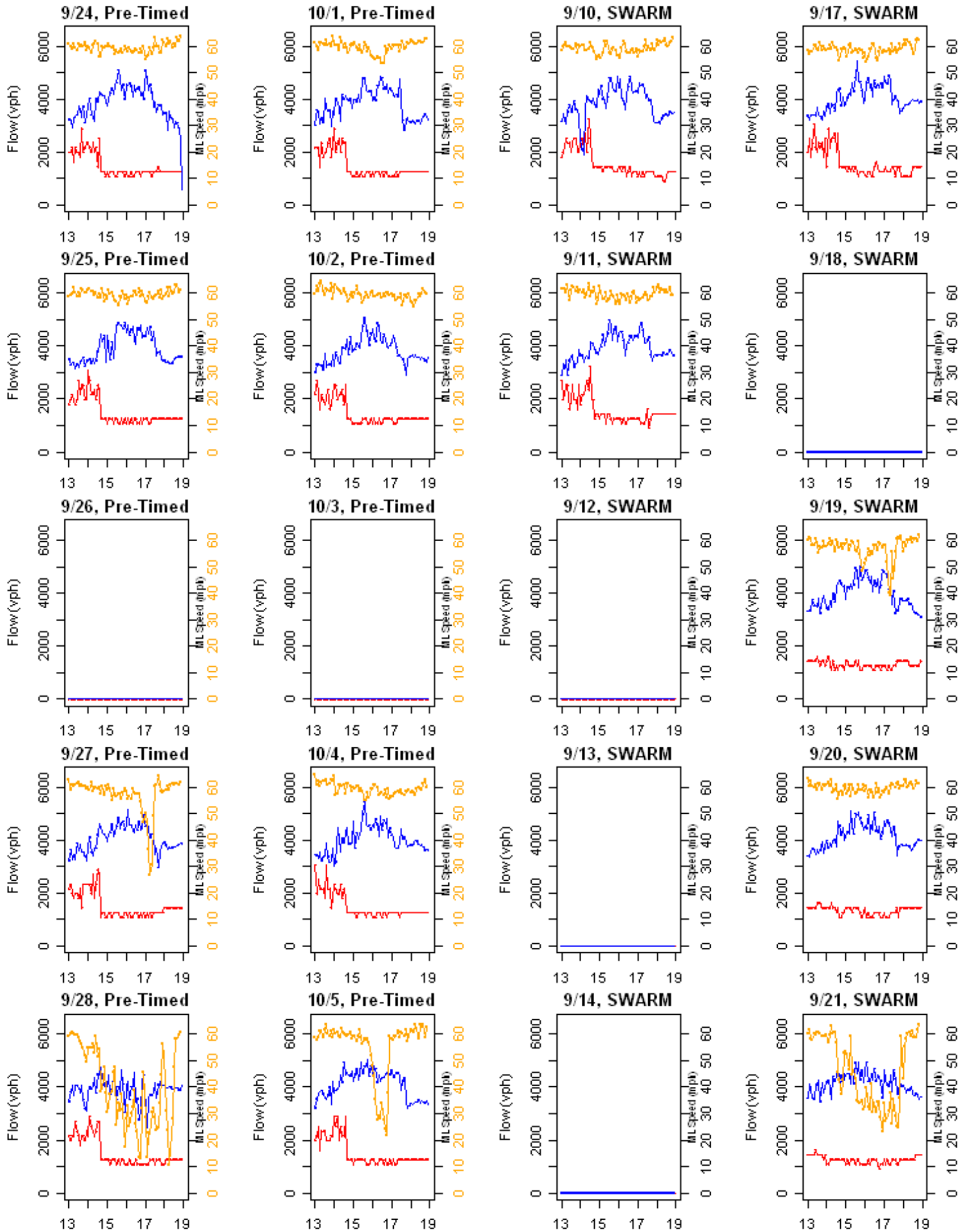
# I-205 NB, Lawnfield MP 13.58, 1-7 pm



# I-205 NB, Sunnybrook MP 14.32, 1-7 pm

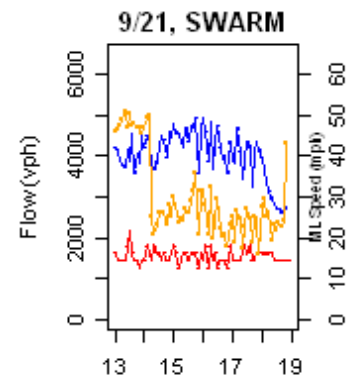
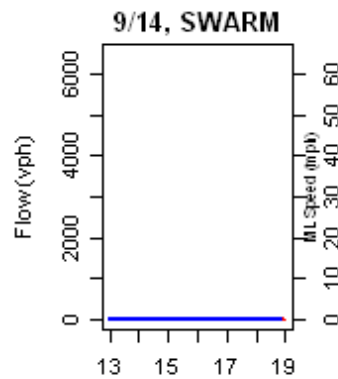
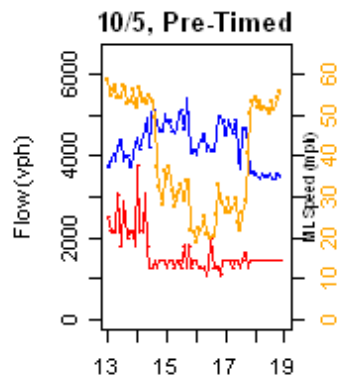
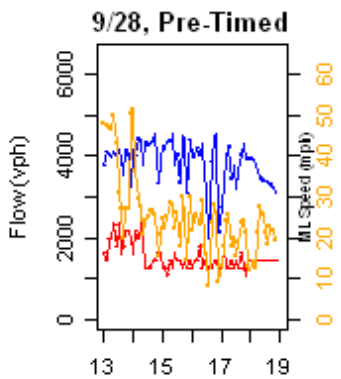
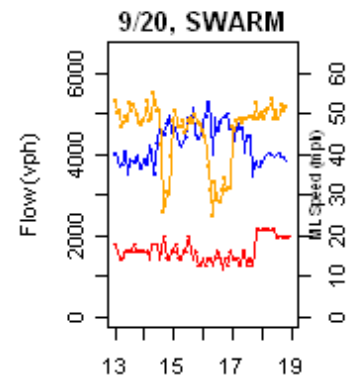
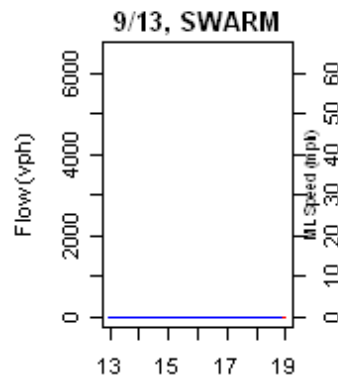
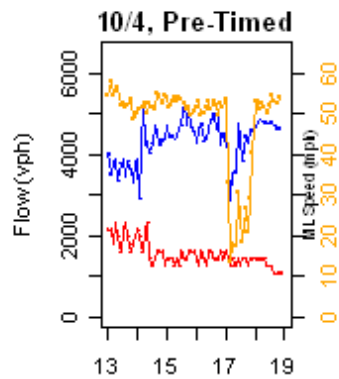
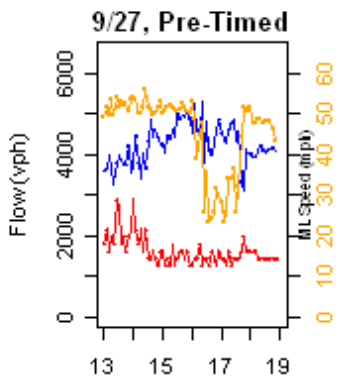
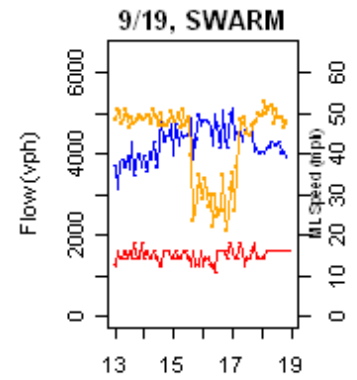
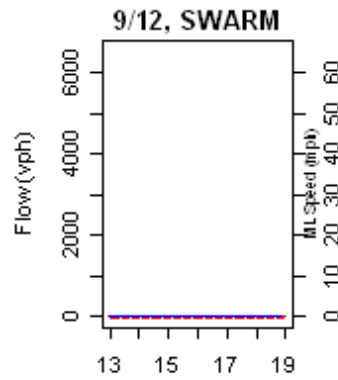
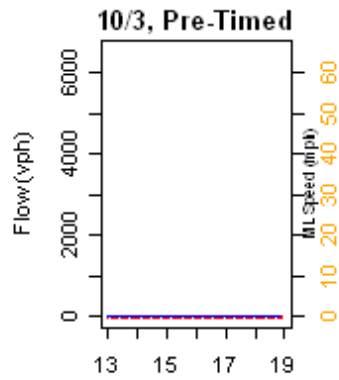
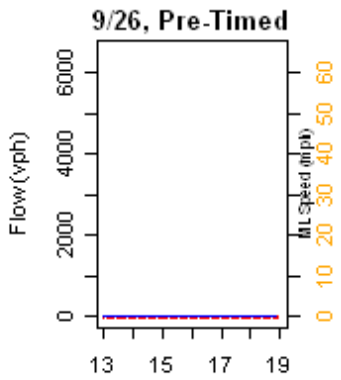
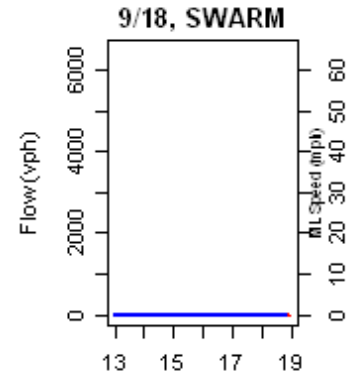
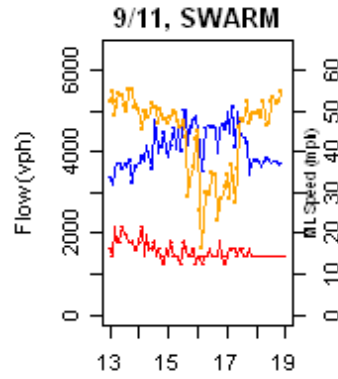
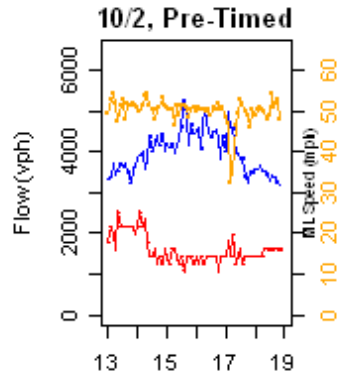
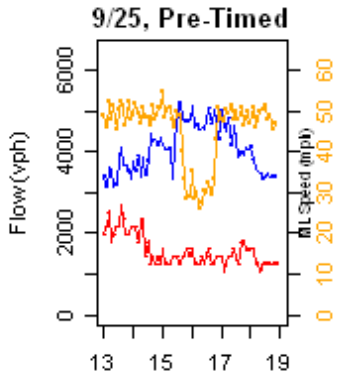
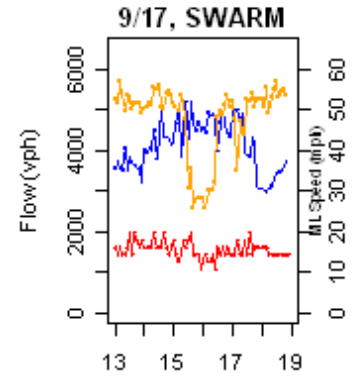
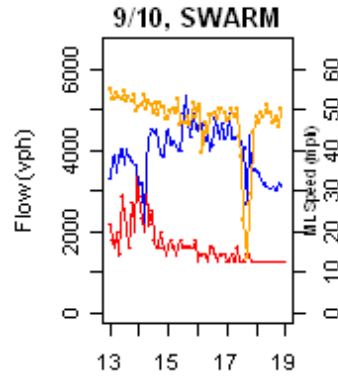
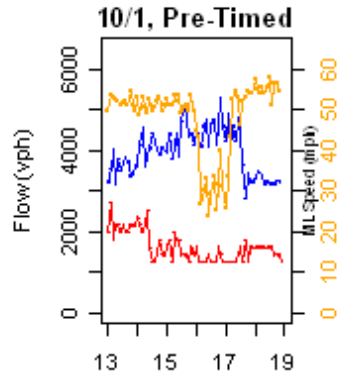
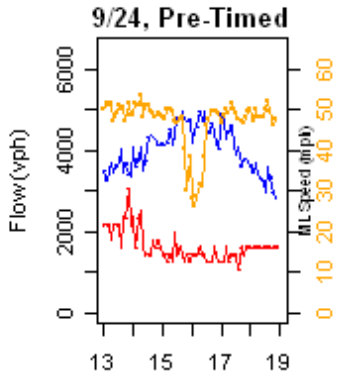


# I-205 NB, Sunnyside MP 14.7, 1-7 pm

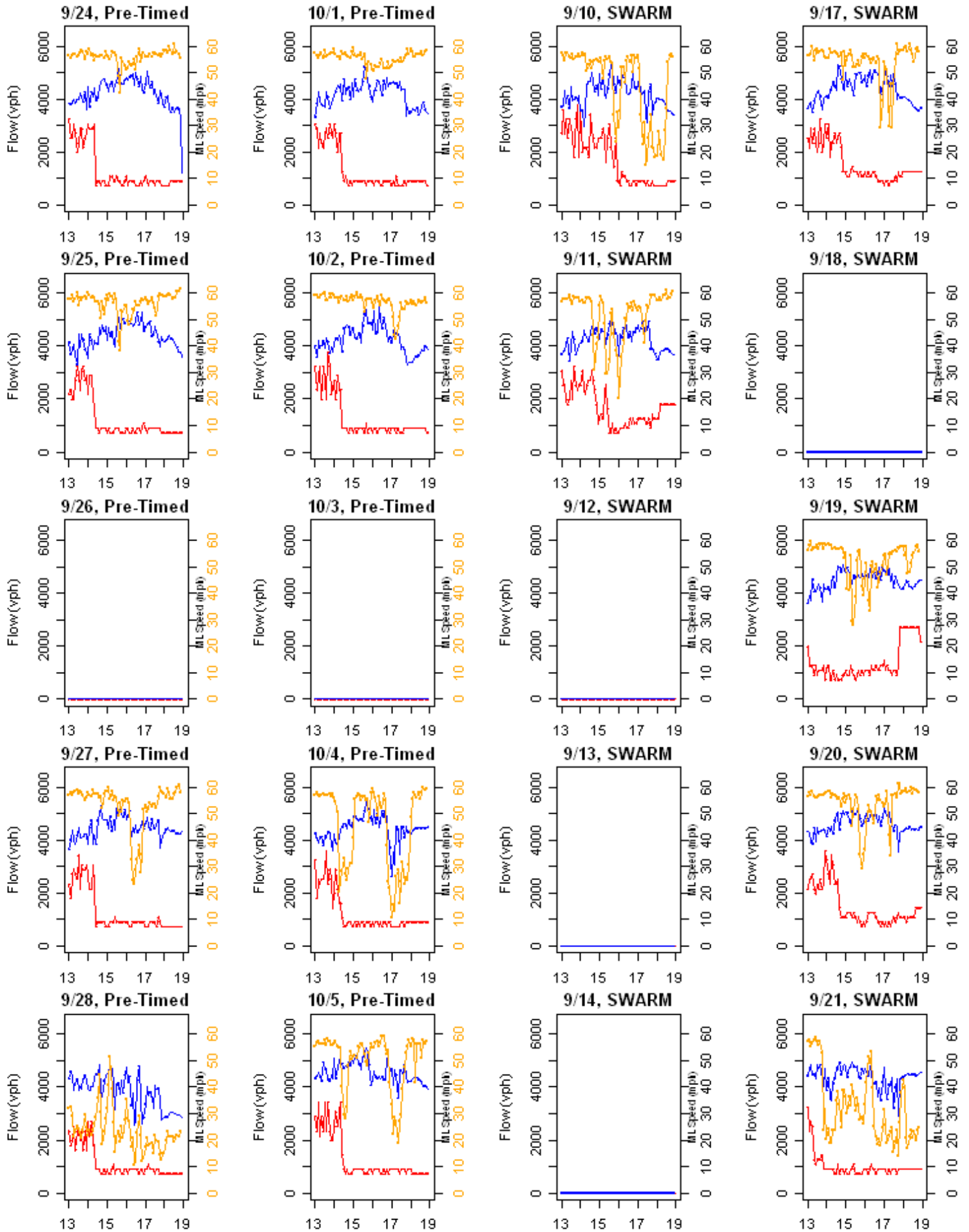




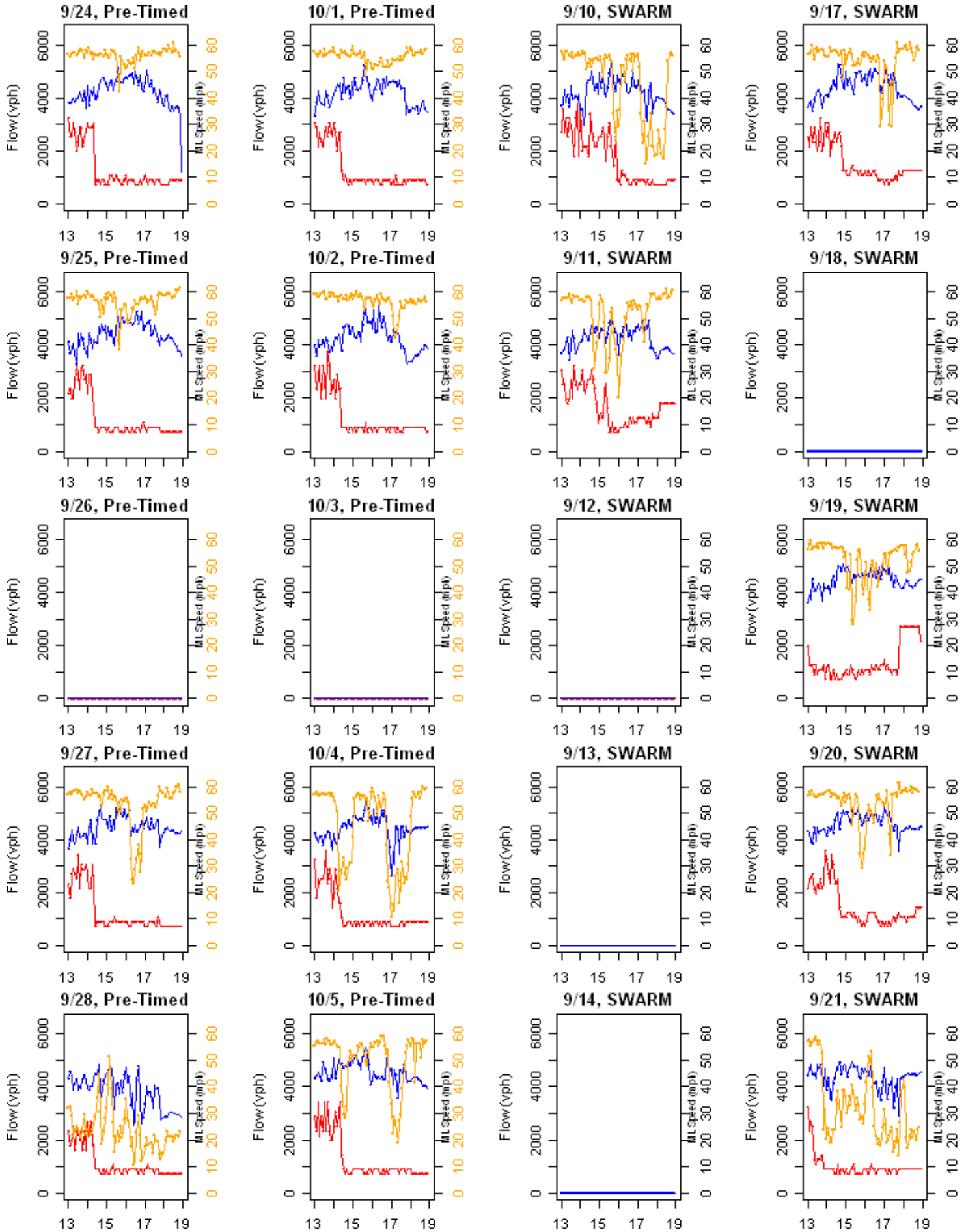
# I-205 NB, Johnson Creek MP 16.2, 1-7 pm



# I-205 NB, Foster MP 18.1, 1-7 pm



# I-205 NB, Foster MP 18.1, 1-7 pm



# I-205 NB, Division MP 19.78, 1-7 pm

