

# **A Novel Image Database Analysis System for Maintenance of Transportation Facility – Phase I**



**The University of Toledo – University Transportation Center**

**Project Number: UTUTC-IU-5**

**Final Report**

**Eddie Y. Chou  
Principal Investigator**

**Ezzatollah Salari  
Co-Investigator**

**June 2010**

## DISCLAIMER

*The contents of this report reflect the views of the authors, who are responsible for the facts and the accuracy of the information presented herein. This document is disseminated under the sponsorship of the Department of Transportation University Transportation Centers Program, in the interest of information exchange. The U.S. Government assumes no liability for the contents or use thereof.*

# **A Novel Image Database Analysis System for Maintenance of Transportation Facility – Phase I**

## **Executive Summary**

Transportation is critical to the global economy and plays a particularly vital role in this region's economic growth. Transportation infrastructures such as highways, streets, and bridges represent one of the largest public investments of many governments. Maintaining and managing the vast and aging transportation infrastructures with limited resources is a most challenging task for nearly all transportation agencies. Monitoring and evaluating the physical condition of the transportation infrastructure and scheduling for timely repair are essential for effective infrastructure management. However, human inspection can be time consuming and prone to inconsistent results due to differences in judgments. Digital imaging technology has been proposed as a viable alternative to human inspection and provides automated inspection, monitoring, and pattern recognition, as the cost of imaging technologies has become more affordable. The objective of this research was to assist transportation agencies efficiently record, monitor and evaluate the conditions of transportation infrastructure assets so as to more effectively managing the needs for maintenance or rehabilitation with minimum total costs and least interruptions of services. The researchers reviewed relevant literatures and designed the framework of a prototype imaging system to systematically and automatically extract features from digital images of pavement surfaces. The focus was on processing and transforming the roadway images for analysis, and extracting visible cracking data including crack length, width, and patterns from the processed roadway images. A new crack connectivity algorithm to rebuild the crack pattern after noise reduction was developed and implemented. This study was jointly funded by UT-UTC and MIOH-UTC. Phase II of this project, which continues the development of the prototype and focuses on improved quantification of cracking in terms of its length and width, and uses wavelet transformations to extract and identify different crack patterns in order to match the imaging processing results with human ratings, was subsequently funded by both sponsors.

## 1. Introduction

Transportation infrastructures such as highways, streets, and bridges represent one of the largest public investments of many governments. Maintaining and managing the vast and aging transportation infrastructures with limited resources is a most challenging task for nearly all transportation agencies. Monitoring and evaluating the physical condition of the transportation infrastructure and scheduling for timely repair are essential for effective infrastructure management. However, human inspection can be time consuming and prone to inconsistent results due to differences in judgments. The demands for automated inspection, monitoring, and pattern recognition for transportation applications are ever increasing, partly driven by the costs of imaging technologies which are becoming more affordable. There are two major steps in the development of an automated pavement evaluation system, namely, image acquisition and software development of image processing algorithms for data analysis and interpretation. This study focuses on the development of image processing techniques for pavement surface anomaly detection and characterization. This includes extraction of pavement abnormalities in a digital image from the background and obtaining a binary image leading to the characterization and quantification of the pavement cracks.

A typical inspection process such as pavement distress inspection can be divided into three stages: preprocessing, segmentation, classification and measurements. Preprocessing is used to improve the quality of the input image in order to facilitate the analysis and interpretation at subsequent stages. One of the important tasks in preprocessing is filtering for noise removal, deblurring the image, or highlighting specific features, e.g., cracks on the pavement to meet the

demand of the application concerned. Image segmentation is the process of dividing an image into meaningful regions, namely, objects of interest and background. The main parameters of interest for pavement inspection are crack pattern classification and measurement of various parameters from crack features.

This report explores the existing digital imaging technologies to automate the pavement condition assessment process. The main parameters of interest are pattern classification and measurement of various parameters from crack features. Section 2 reviews the previous works on processing pavement images. Section 3 presents the methodology developed as a result of this study. Section 4 shows the simulation results and the progress in achieving the goals set for this project, followed by the conclusions in Section 5.

## **2. Background**

The wavelet transform methods have been employed by some researchers as a crack detection tool. The advantage of the wavelet transform is its multi-resolution property, which allows efficient identification of local features of the signal [1]. The wavelet transform has been successfully applied for crack localization in beam structures [2], [3]. The Lipschitz exponent is used to estimate the size of the crack [4]. Douka proposed a method for estimating both the location and size of the crack by defining an intensity factor which relates to the size of the crack to the coefficients of the wavelet transform [5]. Li Qingquan [6] proposed a robust and high-efficiency model for segmentation and distress statistic of massive pavement images which based on multi-scale space. S. K. Sinha [7] proposed a method for detection of crack falls within the

scope of the Bayesian framework. Leontios, Evanthia and Athanasios proposed algorithm for crack detection called kurtosis crack detector (KCD) [8]. Above, people have done some research about crack detection, and now we will concentrate on crack connection problem.

H.D.Cheng [9] proposed a method which can check connectivity of cracks using the fuzzy set theory. The objective is to eliminate pixels lacking in connectivity. The isolated darker pixels, which are considered noise, are eliminated. Although many noise pixels are removed the method still cannot connect break points of cracks in their experiment results. In other words, cracks are not very clear after checking connectivity. There are a few papers mentioned about checking and connecting break points of cracks. The proposed algorithm in this paper provides a new method to easily count the number of cracks. The Strategic Highway Research Program uses 4-connected algorithm to connect cracks and remove spurs of cracks. First the method needs to convolve the image. If the diagonal pixels are black, the near up or bottom pixel is also given black. Then it removes spurs of the image. If one pixel has less than two black pixels in its four neighbors it will be removed as a spur pixel. The test results show effect in connecting the break points. However, it cannot reflect accurate direction of cracks because of removing crack pixels. Y. Huang and B. Xu [10] proposed the crack cluster connection method. First, it finds verified seeds of crack, and then connects individual seeds into seed clusters. Starting from one seed, a crack cluster grows by accepting adjacent seeds one at a time until no close seeds can be taken. It can be used to draw a path in the corresponding pavement image but it is hardly able to calculate the width of cracks.

### 3. Methodology

The image processing technique developed in this study operates on existing digital images of pavement surface. First, digital image preprocessing is performed to convert the original image to binary image, enhance the images, and remove any noises. After typical noise reduction operations, some cracks would become „broken“, that is discontinuous due to the noise reduction process. Therefore, a crack connectivity algorithm was developed to reconnect the cracks. The

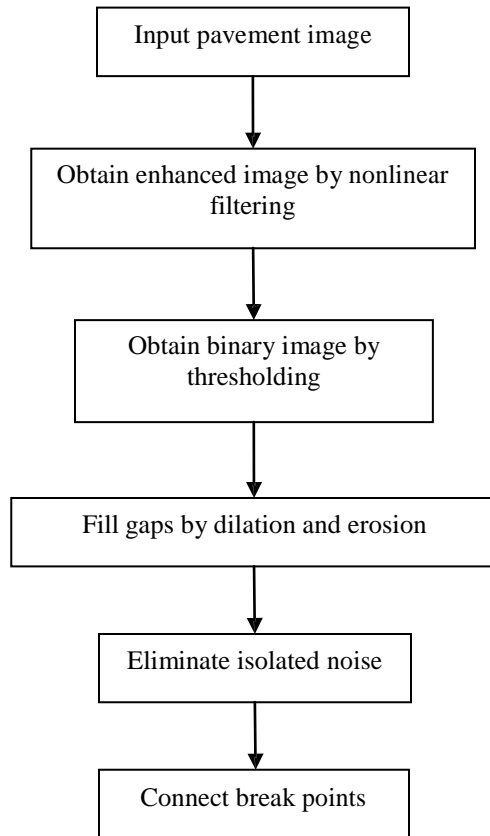
algorithm first finds the initial pixel of a crack and decides the direction of the crack, for example, whether or not the crack is transverse or longitudinal. The algorithm then searches in each direction for break points of cracks. After finding a break point, the algorithm locates the nearest crack pixel in a particular searching area to fill the gap. When the pixels between it and the break point are filled, the nearest crack pixel will be the next initial pixel. The algorithm continues to search the break points until the end of the crack is located. The entire processing methodology is shown in Figure 1.

#### *3.1 Image Enhancement*

The aim of preprocessing in pavement image inspection is to suppress the unwanted information from the image data and enhance the desired image features important for further processing. Preprocessing is an important step in the sense that with an effective pre-processing much of the subsequent analysis will be simplified.

Due to non-uniform lighting or weather conditions, the contrast between distresses and background is often very low. In addition, the image is often corrupted with noise and undesired

features. Therefore, an image enhancement method capable of removing non-uniform background illumination effects and noises is required.



**Figure 1 Processing Steps**

A promising technique would be to use a nonlinear filter which takes the mean and variance of local gray values into account. Other techniques, such as median filtering can be used to reduce the noise while preserving much of the details in the image. To remove the non-uniform background intensity effect, we used the following nonlinear filter, as show in (1),

$$f^* = Z(i,j) * [f_{org}(i,j) - f_{blur}(i,j)] + m \quad (1)$$



where  $f^*$ ,  $f_{\text{org}}(i,j)$ , and  $f_{\text{blur}}(i,j)$  are respectively the filtered, original and blurred images of the pavement,  $m$  is the mean value of the original image, and  $Z(i,j)$  is a local gain factor sensitive to local variations which is 1 for here. The blurred image is obtained by convoluting a low-pass Gaussian spatial filter [8] with the original image. Here, we chose Gaussian low-pass spatial filter because it avoids a bright ringing effect.

### *3.2 Thresholding*

Thresholding is a widely used technique for image segmentation and feature extraction. For a given image, most of these techniques involve creating a histogram of the gray level values to be used to find the peaks that exist in the image. A threshold is then chosen according to the valley between these peaks or modes (usually two prominent peaks are assumed). Adaptive thresholding applies a different threshold to different regions of the image and results in better segmentation. Pavement cracks usually involve abrupt changes in gray level of two adjacent regions of variant gray levels. With an appropriate threshold that is extracted from the block and lies somewhere between the means of the two regions, the block can be binarized.

Here, we use a segmentation method based on fractal theory. A fractal is generally a rough or fragmented geometric shape that can be split into parts, each of which is (at least approximately) a reduced-size copy of the whole, a property called self-similarity. The term was coined by Benoît Mandelbrot in 1975 and was derived from the Latin fractus meaning "broken" or "fractured." a mathematical fractal based on an equation that undergoes iteration, a form of

feedback based on recursion. Following Ref. [11], first, we introduce the concept upper surface  $u(i, j, \epsilon)$  and lower surface  $b(i, j, \epsilon)$ . Initially, given the gray level function  $f(i, j) = u(i, j, 0) = b(i, j, 0)$ . For  $\epsilon = 1, 2, 3, \dots$ . The upper surface and lower surface are defined as follows:

$$u(i, j, \epsilon + 1) = \max\{u(i, j, \epsilon) + 1, \max[u(m, n, \epsilon)]\} \quad (2)$$

$$|(m, n) - (i, j)| \leq 1$$

$$b(i, j, \epsilon + 1) = \min\{b(i, j, \epsilon) + 1, \min[b(m, n, \epsilon)]\} \quad (3)$$

$$|(m, n) - (i, j)| \leq 1$$

The image points  $(m, n)$  with distance less than one from  $(i, j)$  were taken to be the four immediate neighbors of  $(i, j)$ . The covering blanket is defined by its upper surface and its lower surface. A point  $(x, y, f)$  will be included in the blanket for  $b(x, y, \epsilon) < f < u(x, y, \epsilon)$ . The volume of the blanket is computed from  $u$  and  $b$  by

$$V(\epsilon) = \sum_{i,j} (u(i, j, \epsilon) - b(i, j, \epsilon)) \quad (4)$$

As the surface area measured with radius  $\epsilon$  we take the volume divided by  $2\epsilon$

$$A(\epsilon) = V(\epsilon)/2\epsilon \quad (5)$$

The area of a fractal surface behaves according to the expression:

$$A(\epsilon) = k\epsilon^D \quad (6)$$

After taking logarithm of expression (6), we get the equation:

$$\log A(\epsilon) = D \log \epsilon + \log k \quad (7)$$

According to the expression (7), the slope  $D$  and the values of  $k$  can be calculated by least-square fitting.

When a pure fractal image is analyzed, the value of  $k$  is a constant. However, for the image of different texture, the value of  $k$  changes on scale, so the parameter  $k$  reflects the change of the surface area on different scales. Obviously, when the surface is even, the value of  $k$  is smaller. Contrarily, when the surface is rough, the value of  $k$  is bigger. Thus, we can set the parameter  $k$  as a local threshold to segment the image. [12]

The algorithm can be presented as the following:

Step 1: Set a window of size  $s \times s$  and move it in the image of  $M \times N$  from the beginning of the image step by step. Then calculate every  $k$  of each window.

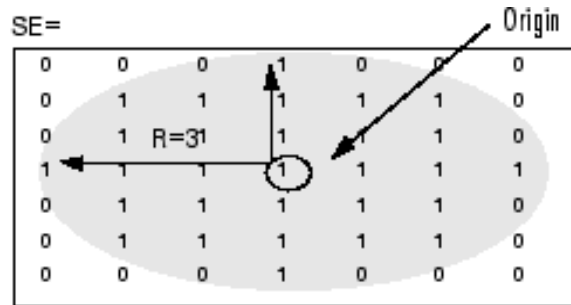
Step 2: Get the minimum of the  $k$  and assume fix values for  $0 < \alpha < 1$  and  $\beta$ . Set the threshold  $T = \alpha \times k_{min} + \beta$  to segment the image.

After many tests, we selected  $s = 3$ ,  $\epsilon = 9$ ,  $\alpha = 0.22$  and  $\beta = 45$ .

### *3.3 Dilation and Erosion*

Mathematical morphology is an important tool for low-level image processing [10]. Most morphological transforms are constructed from elementary morphological operations such as dilation and erosion. This operation is guided by structural elements. Applying dilation before eroding is called a closing operation, and it can fill the holes in an image. After thresholding, some crack pixels are removed and as a result, there are lots of gaps on the crack. Therefore, closing operations can be used to join the break points of the cracks and improve the accuracy of cracks.

Here, after many tests, we chose morphological structuring element “disk” for dilation and erosion. It creates a flat, disk-shaped structuring element and the radius is 5. The structuring element is described in Figure 2.



**Figure 2 Structuring element “disk”**

### 3.4 Noise Elimination

There are several methods that can be used to eliminate the noise, for example, median filtering. The median filter is a non-linear digital filtering technique, often used to remove noise from images or other signals. The idea is to examine a sample of the input and decide if it is representative of the signal. This is performed using a window consisting of an odd number of samples. The values in the window are sorted into numerical order; the median value is then selected as the output. A new sample is acquired, and the calculation repeats[13]. However, median filter is usually used to remove “salt and pepper” noise. Some crack pixels are also removed after using this filtering. As a result, this will lead to creation of many gaps on the crack. Therefore, to remove the isolated noise, the algorithm checks all eight neighbors, including the neighbor in the same direction of the bright pixel. If all these neighbors are dark pixels (i.e. non crack pixels), then this pixel is considered an isolated noise and removed.

Although this algorithm cannot remove isolated noise more than median filtering, it can maintain crack information as much as possible.

### *3.5 Connection of break points*

The connectivity analysis of the crack pixels is based on a depth-first searching method. The process consists of two steps: break point determination and gap connection. The method does not require checking every crack pixel, but only finding the break points. First, the algorithm finds the initial pixel of a crack. A crack pixel is denoted by a bright pixel. This pixel can be verified as the initial point of a transversal crack if we find a bright pixel within a distance of 5 or 10 pixels in the transverse direction and 2 or 4 pixels in the longitudinal direction; otherwise, it will be considered as noise. Similarly, if we find a bright pixel, whose distance is 5 or 10 pixels in the longitudinal direction and 2 or 4 pixels in transverse directions, this pixel could be the initial pixel of a longitudinal crack. In the following, we describe a procedure for finding the transversal cracks; the procedure for longitudinal cracks would be similar.

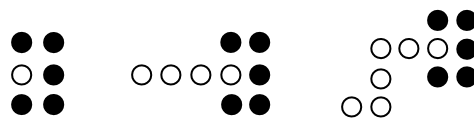
After finding the coordinates of the initial pixel of a transverse crack, we define a search area and three prioritized directions, namely, the right, up, and down directions to denote the first, second, and third directions of the search, respectively. The basic rule of the searching method is to follow the bright pixels in the first direction from the initial pixel until there is no bright pixel in this direction. It will then continue along the second direction and if no bright pixel is found in this direction, it then immediately checks the pixel in the first direction. If there is a bright pixel, the algorithm will continue in the first direction again, otherwise, it will go along the third

direction. In searching for transverse cracks, the high priority level of searching is followed by the second direction and then finally in the third direction with the lowest priority.

The search algorithm for connectivity analysis is summarized below:

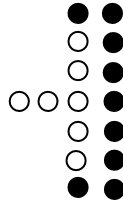
- 1) *Start from an initial crack pixel.*
- 2) *Follow the crack pixels in three directions right, up and down until no crack pixel is found.*
- 3) *Check 8-neighbors of the pixel visited last*
- 4) *Determine the presence of either a break point or a column of break points.*
- 5) *Look for the nearest crack pixel in a specific search area.*
- 6) *Connect them and repeat the process for the entire image.*

Case 1: Note that, when there is no bright pixel in any of the three directions, the method will then check the upper right and bottom right pixels, i.e., diagonal pixel elements. If neither pixel is bright, the final bright pixel is a break point. Otherwise, the search algorithm will continue in the first direction from one of the right pixels. Figure 3 shows the break point in Case 1.



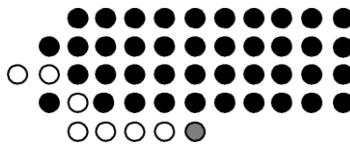
**Figure 3 The break point in Case 1**

Case 2: On the other hand, after continuing along the third direction, if there is no bright pixel in the next column, we obtain a series of break points. Figure 4 shows the break points in Case 2.



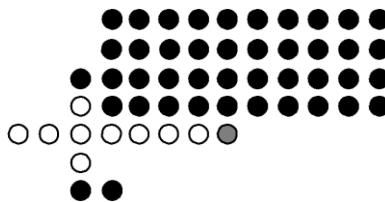
**Figure 4 The break points in Case 2**

To obtain a connected set of crack points, we define a search area for a possible bright pixel. The search areas for finding the nearest crack pixel would be different for these two cases. Figure 5 shows part of the searching area corresponding to Case 1. The method will check pixels in the up and down 4 rows and the right 20 columns. If there is a bright pixel found in the search areas, it will change the previous pixels in the same row to a bright pixel.



**Figure 5 Searching area 1**

Figure 6 shows the searching area for Case 2. In a similar way, the algorithm finds a crack pixel in the search area and connects it to the previous break point by backtracking.



**Figure 6 Searching area 2**

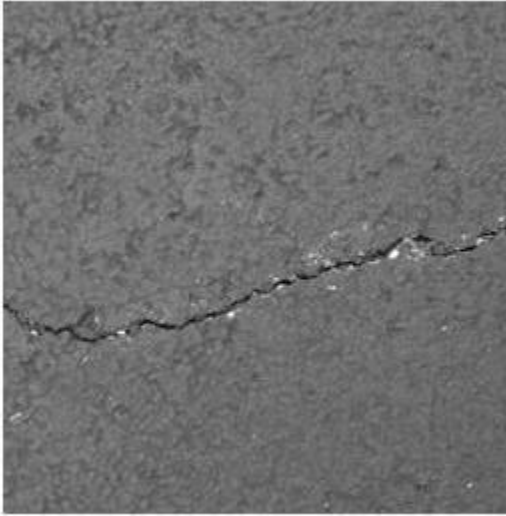
The process for obtaining a longitudinal crack is similar to the transverse; however, the three prioritized search directions will change in the following way. The downward direction is

crucial for this case; therefore, it will be the first direction with high priority to search for continuity. The second and the third directions are the right and left directions, respectively. The priority level is the same as the transversal cracks. Note that, the order of priority is very important and should be observed during the search process. We cannot use the same search method for both transversal and longitudinal cracks, because the tendency for transversal cracks is in the right direction, and the tendency of longitudinal crack is in the downward direction.

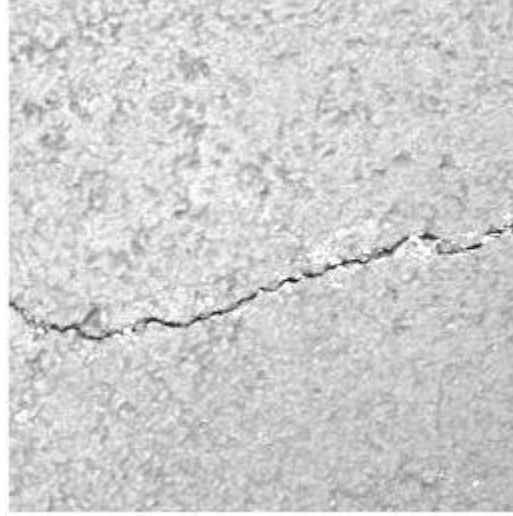
#### **4. Simulation Result**

The proposed algorithm has been implemented in MATLAB R2008, and its performance and simulation results are presented in this section. Figure 7 shows an original pavement image with cracks. Figure 8 shows an enhanced image. Figure 9 shows the image after Thresholding. Figure 10 shows the image after dilation. Figure 11 shows the image after erosion. After using morphological filtered, Figure 12 shows the image after eliminating isolate noise. And, the final connected crack feature is shown in Figure 13. The image after enhancement appears to have a reduced amount of noise and definitely with much more contrast. It is obvious that almost all break points are connected except the last one, because the size of the gap is too large relative to the searching area. Figure 14 shows the image after Median filter based on the Erosion image. When compared to the Figure 12, we can see that the noise still cannot be removed completely, but lots of crack pixels are removed. It generates some big gaps which cannot be connected.

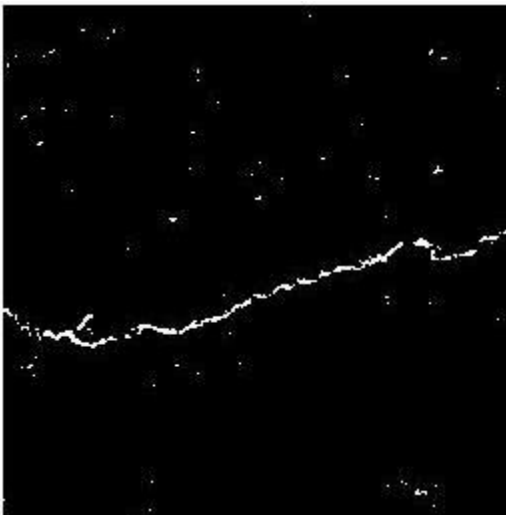




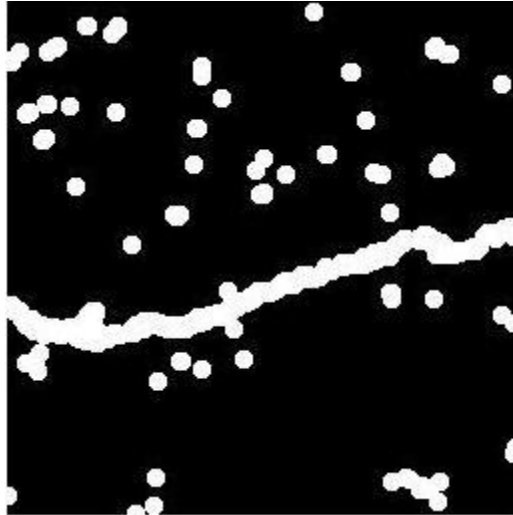
**Figure 7 Original image**



**Figure 8 Difference image**



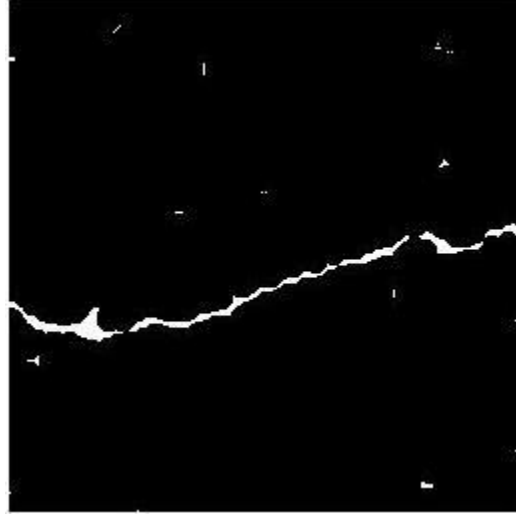
**Figure 9 Binary image**



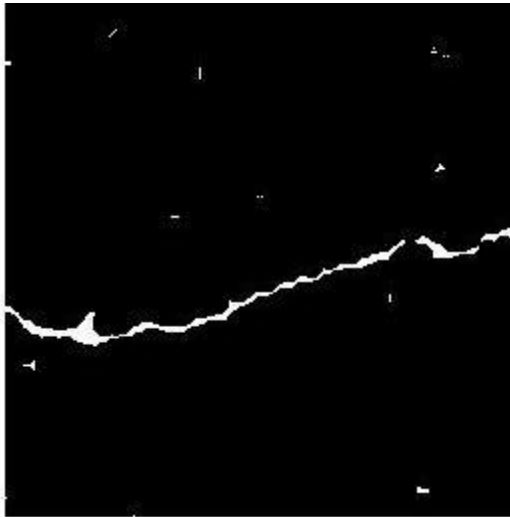
**Figure 10 Dilation image**



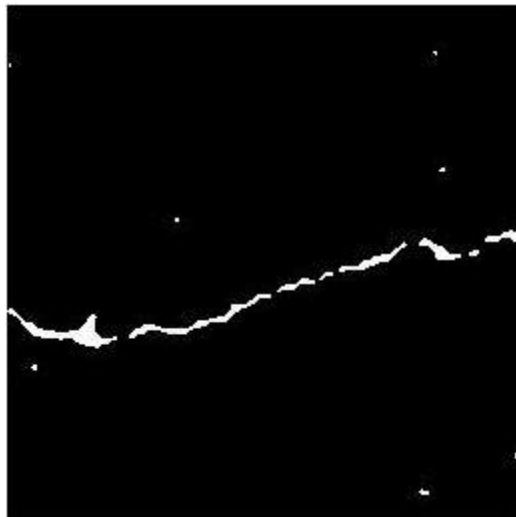
**Figure 11 Erosion image**



**Figure 12 Filtering image**



**Figure 13 Connecting image**



**Figure 14 Median filter image**

## 5. Conclusions

This project was an initial phase to design a framework for a prototype system that would automate the pavement condition inspection through the use of digital imaging technology. The researchers were able to achieve the objectives of the project. A new algorithm for extraction of both transversal and horizontal cracks from pavement images has been developed as part of this project. The first step of the developed algorithm involves pre-processing, which consists of enhancement, thresholding, and morphological operations using dilation and erosion to eliminate the remaining noise. One of the major components of the algorithm is the determination of the break points and their connection for extraction of the crack features. The break points could appear as a single or multiple points. This will in turn determine an appropriate search area in each case. After finding the break points, a depth-first searching method is devised to connect the break points within the search area. Simulation results demonstrate that the method can effectively and efficiently extract the crack features from the pavement images. Future work includes the calculation of the length and width of the cracks as well as detection and quantification of other surface distresses. Subsequent phase(s) of this project will further improve the accuracy and practicality of the automated inspection process and bring the prototype system from the proof-of-concept stage to a functioning demonstrable system.

## References

- [1] Newland D. E. "Wavelet analysis of vibration" *Journal of vibration and acoustics*. Vol. 116, pp. 409-416, 1994.
- [2] Q. Wang, X. Deng. "Damage detection with spatial wavelets" *International journal of solids and structures*. Vol. 36, pp3443-3468, 1999.
- [3] S. T. Quek, Q. Wang, L. Zhang and K. K. Ang. "Sensitivity analysis of crack detection in beams by wavelet technique" *International journal of mechanical sciences*. Vol. 43, No. 12, December, 2001.
- [4] J. C. Hong, Y. Y. Kim, H. C. Lee and Y. W. Lee. "Damage detection using the Lipschitz exponent estimated by the wavelet transform: applications to vibration modes of a beam" *International journal of solids and structures*. Vol. 39, No. 7, April, 2002.
- [5] E. Douka, S. Loutridis and A. Trochidis. "Crack identification in plates using wavelet analysis" *Journal of Sound and Vibration*. Vol. 270, No. 1-2, February, 2004.
- [6] Q. Q. Li and X. L. Liu. "A model for segmentation and distress statistic of massive pavement images based on multi-scale strategies" *The International Archives of the Photogrammetry, Remote Sensing and Spatial Information Sciences*. Vol. 37, Part B5. 2008.
- [7] S. K. Sinha. "Automated condition assessment of buried pipeline using computer vision techniques" *The 16th National Convention of Computer Engineers held at Patna*. December 2001.
- [8] L. J. Hadjileontiadis, E. Douka and A. Trochidis. "Crack detection in beams using kurtosis" *Computer & Structures*. Vol. 83, No. 12-13, May, 2005.
- [9] H. D. Cheng, Jim-Rong Chen, Chris Glazier, and Y. G. Hu. "Novel approach to pavement cracking detection based on fuzzy set theory" *Journal of Computing in Civil Engineering*. Vol. 13, No. 4, October, 1999.
- [10] Y. Huang and B. Xu. "Automatic inspection of pavement cracking distress" *Journal of Electronic Imaging*. Vol. 15, 013017 February, 2006.
- [11] Rolf Adams. "Radial decomposition of discs and spheres" *Graphical Models and Image Processing*. Vol. 55, No. 5, pp. 325-332. September 1993.
- [12] Rein Van Den Boomgaard and Richard Van Balen. "Methods for fast morphological image transforms using bitmapped binary images" *Graphical Models and Image Processing*. Vol. 54, No. 3, pp. 252-258. May 1992.

## Appendix Matlab Implementation

### 1. Practical Experiment

The first step implemented is that of converting the RGB (i.e. the color image) as shown in Fig A1 to a gray scale image. This conversion is required because Matlab is unable to perform certain operations on a color image. For converting a color image to a gray scale image, we firstly read the image and then perform the required operation using the function *rgb2gray*. The function used for effectively reading an image in Matlab is *imread*.

#### 1.1 *Reading the image:*

```
I = imread('pic9237.jpg');  
figure; imshow(I);  
title('Original Image');
```

#### 1.2 *Gray-Scale Conversion:*

```
J = rgb2gray(I);  
figure;  
imshow(J);  
title('gray scale image');
```

Once the image is converted to gray-scale as shown in Fig A2, our aim is to extract the maximum crack features from the image. For this purpose we need to enhance the image to make the cracks prominently visible. This is implemented by using the Histogram Equalization method. The Matlab function used for this purpose is *histeq*. This function enhances the contrast of images by transforming the values in the intensity image, or the values in the colormap of an indexed image, so that the histogram of the output image approximately matches a specified histogram.

#### 1.3 *Histogram Equalization:*

```
Y = histeq(J);  
figure;
```

```
imshow(Y);  
title('Histogram Equalisation Image');
```

After the image has been enhanced as shown in Fig A3, we apply a filter to the image in order to remove any noise from the image. For this purpose we have used the adaptive filtering method. The Matlab function used is *wiener2*. The *wiener2* function applies a Wiener filter to an image adaptively, tailoring itself to the local image variance. Where the variance is large, *wiener2* performs little smoothing. Where the variance is small, *wiener2* performs more smoothing.

This approach often produces better results than linear filtering. The adaptive filter is more selective than a comparable linear filter, preserving edges and other high-frequency parts of an image. In addition, there are no design tasks; the *wiener2* function handles all preliminary computations and implements the filter for an input image. The resultant filtered image is as shown in Fig A4.

#### **1.4 Adaptive Filtering:**

```
K = wiener2(Y,[5 5]);  
figure; imshow(Y);  
title('filtered image');
```

#### **RESULTS:**

Original Image



Fig A1. Original Image(Color Image)

gray scale image



Fig A2. Gray-Scale Image



Histogram Equalisation Image



Fig A3. Enhanced Image by Histogram Equalization Method

filtered image



Fig A4. Filtered Image using Adaptive Filtering

## 2. Correcting Non-Uniform Illumination

While processing images using Morphological operations, the images need to have a uniform illumination. Images with non-uniform illumination do not provide required results and can be misleading. In order to obtain uniform background illumination, the following three steps need to be followed. (However the ROI processing has not been considered as there not good papers stating the procedure for processing an image for ROI. Secondly, the Morphological operations have been used, which takes care of ROI and by using Otsu's technique of thresholding we can obtain the same result as we would have obtained after ROI processing.)

- 1) Use Morphological Opening to Estimate the Background. The function mainly used for this purpose is *strel* (structuring element).

*SE = strel(shape, parameters)* creates structuring element, SE, of the type specified by shape. This function accepts various shapes like those of disc, line, diamond, octagon, rectangle, square, etc.

```
background = imopen(J,strel('disk',15));
```

- 2) We can observe the non-uniform illumination in the image by displaying the non-uniformity as a surface by approximating the background illumination. This is observed from Fig A5.

```
figure, surf(double(background(1:8:end,1:8:end))),zlim([0 255]);  
set(gca,'ydir','reverse');
```

- 3) Subtract the Background Image from the Original Image. This step mainly subtracts the background estimated by us in the previous step from the original image.

```
I2 = imsubtract(J,background);  
figure;  
imshow(I2);
```

## 2.1 *Enhancing the Image:*

The corrected image needs to be enhanced in order to make the features distinct and prominent. The function used for this purpose is *imadjust*. This increases the contrast of the output image.

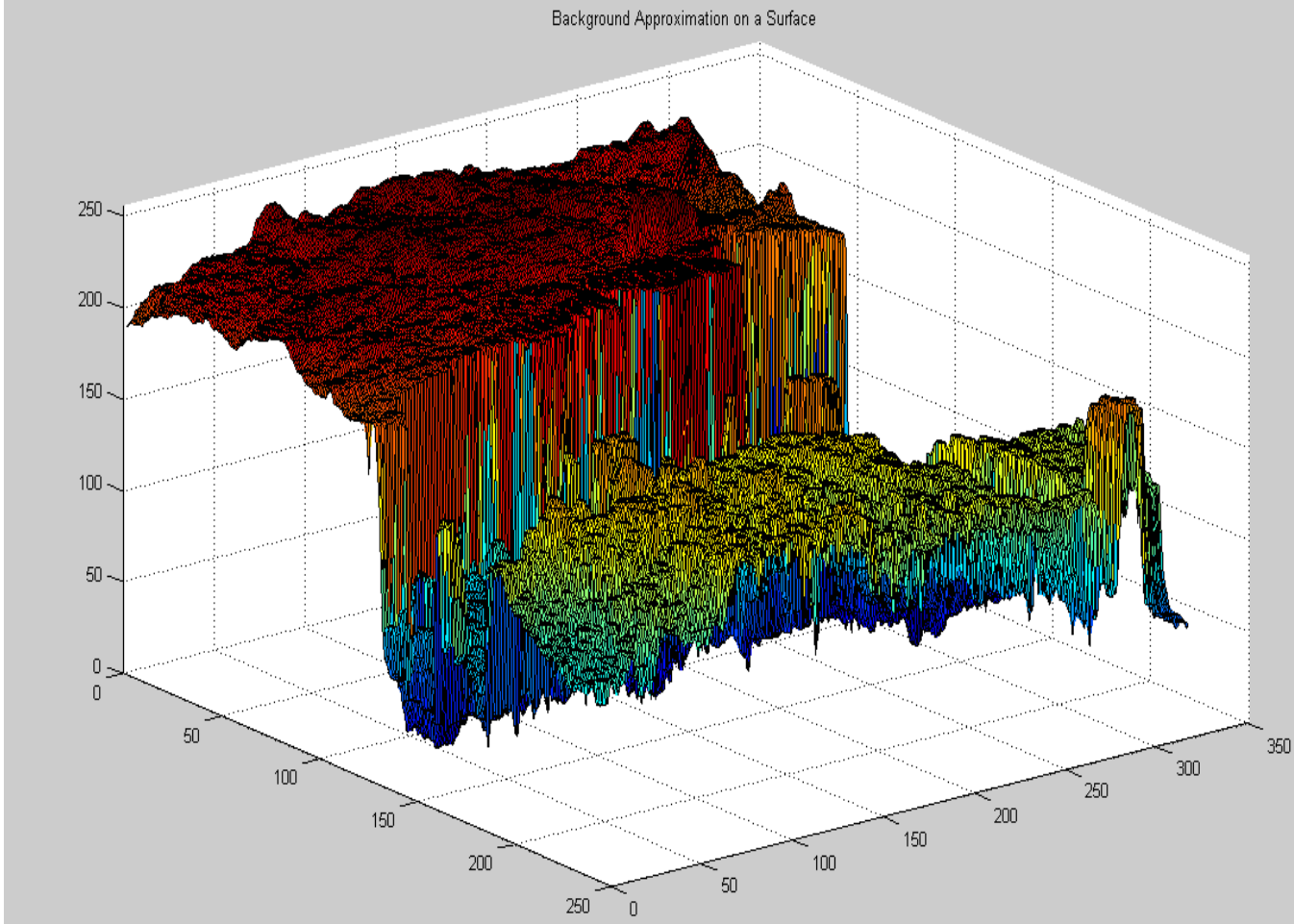
```
I3 = imadjust(I2);  
figure;  
imshow(I3);
```

## 2.2 *Thresholding:*

Otsu's method is used for the purpose of thresholding. The *graythresh* function uses Otsu's method, which chooses the threshold to minimize the intraclass variance of the black and white pixels.

*level = graythresh(I)* computes a global threshold (level) that can be used to convert an intensity image to a binary image with *im2bw*. *level* is a normalized intensity value that lies in the range *[0, 1]*.

```
level = graythresh(I3);  
BW = im2bw(I3,level);  
figure; imshow(BW);  
title('thresholded image');
```



**Fig A5. Background Approximation as a Surface**