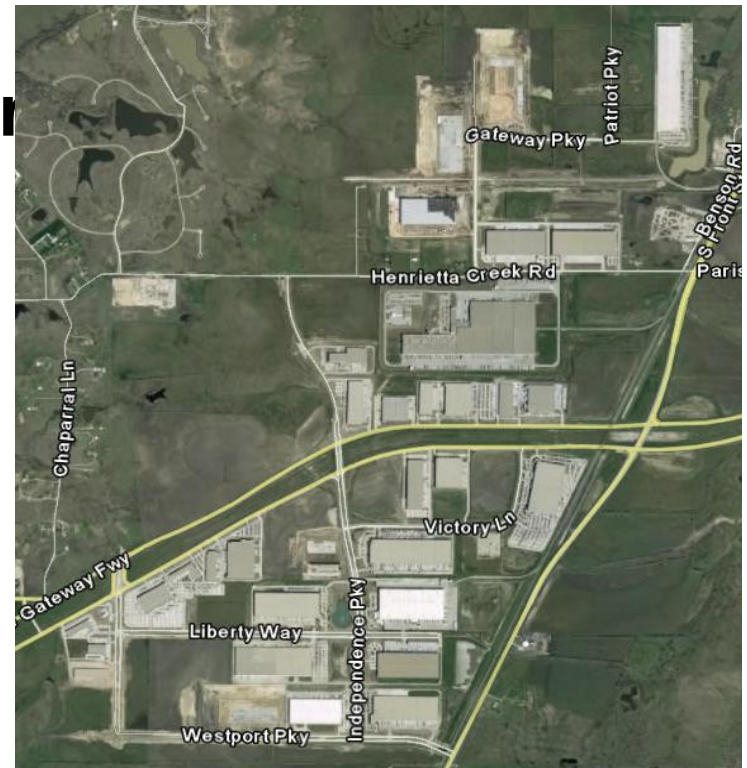


TEAMING FOR SUCCESS

“TxDOT is here to help”

- **Site Selection and Access For Large Distribution Center**



Texas Economic Development

- A TxDOT goal
- TxDOT is here to help



Common Site Selection Criteria

- Central to outlets served
- Low cost site
- Interstate Highway access
- Existing or provided infrastructure
- Qualified available local workforce
- Financial incentives



Igloo distribution center, Katy

Example – Site Needing Extensive Improvements

New interchange ramps, new FM road, widen existing FM road, intersection improvement & signal



Other Examples

- Additional access to Interstate highway



TxDOT Can Help

- You can help
TxDOT help you



Target distribution center, Tyler

Available From TxDOT

- Site selection criteria
 - Save time and money
 - Access
 - Road improvements
- Information about highway improvements
- Steps to obtain state highway improvements
 - Improvements
 - Funding
 - Schedules/lead time
- Access permits to state highways
- Best practices for site selectors



Wal-Mart distribution center,
Sealy

TxDOT Suggestions

Distribution Center Site Location

- Served by existing Interstate/regional freeway interchange
 - “Truck ready”
 - Underutilized
 - On highway without congestion
- Existing site connection to interchange
 - 4 lane or “Super 2” lane road
 - No congested locations
 - Pavement designed for heavy truck traffic
- Assess access needs before committing to site

Other Helpful Tools from TxDOT

- Traffic impact analysis checklist
- Site plan review checklist
- Site access permit application



TxDOT is here to help

Contact:

(Presenter of TxDOT District Office)

Or

Alicia Taliaferro

TxDOT Government and Public Affairs

512-475-1395

ataliaf@dot.state.tx.us