



2009 Hurricane Evacuation Plan Revisions **Transportation Planning Organization**

Stephany Hanshaw
Regional Traffic Operations Manager

March 17, 2010

Hurricane Evacuation Planning

Plan Concepts

- **Maximize the Transportation Network for traffic egress**
- **Utilize Lane Reversal**
- **Utilize Inland Host Sheltering**
- **Utilize Traffic Control as needed to Prevent Route Over-Saturation**
- **Identify “At Risk” Population as Priority**

Evacuation Routes



Hurricane Planning and Analysis

2006 Hurricane Study (phase 2) conducted by VTRC

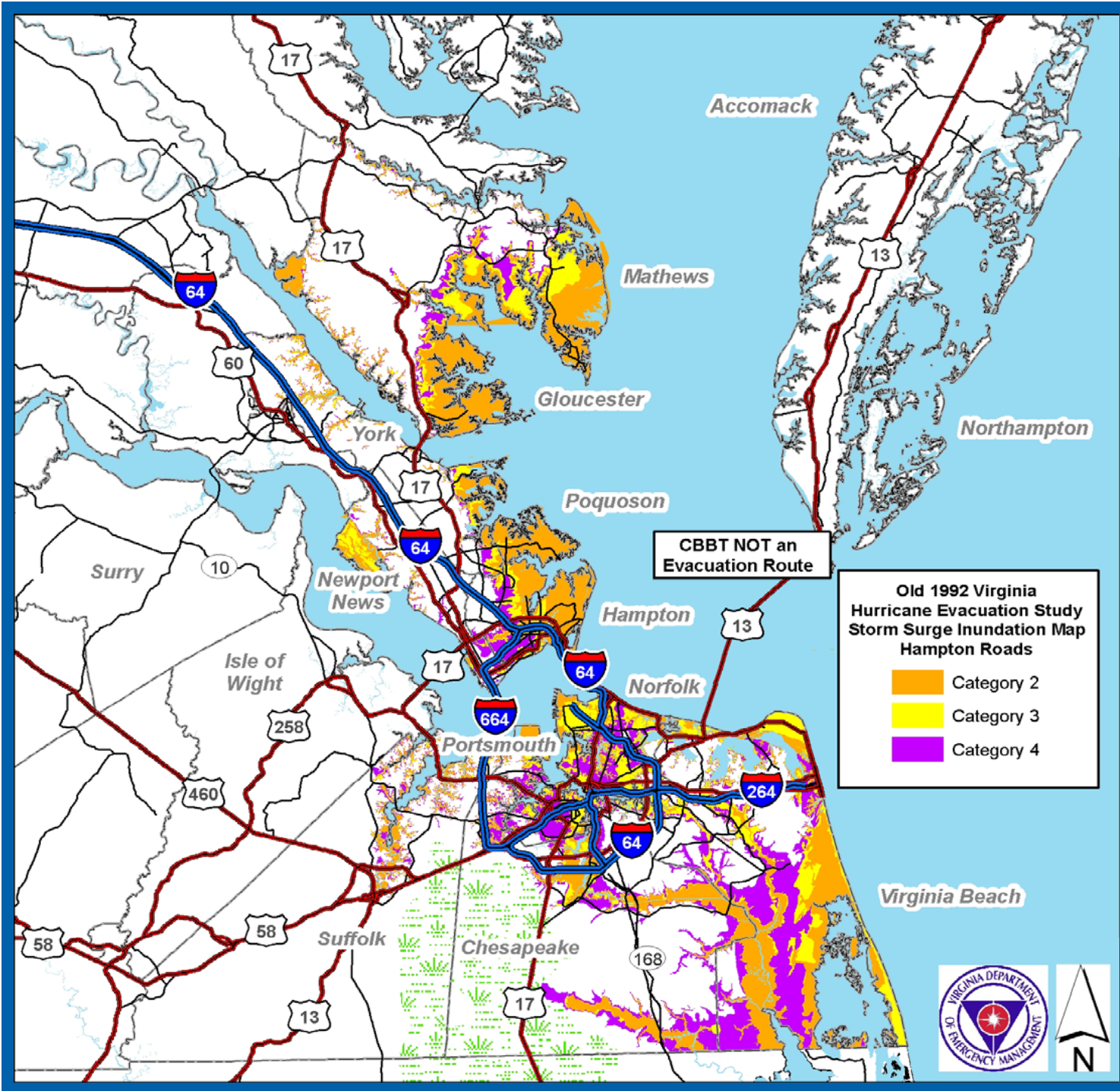
All Cat. 3 or higher storms warranted lane reversal

Traffic impact on downstream destinations should be modeled
(Phase 3)

2008 USACE Hurricane Study

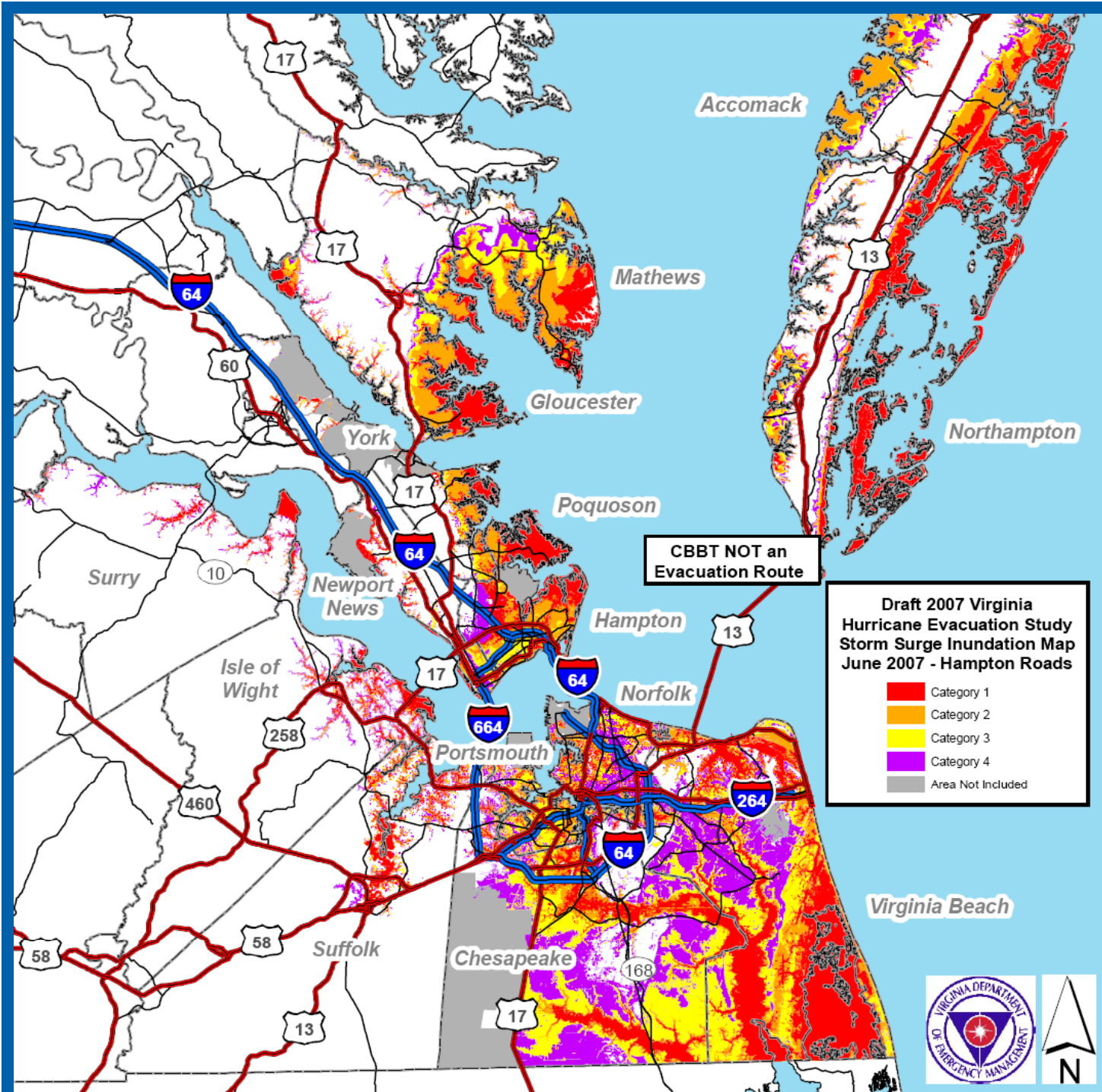
Population base revised (Original VA Hurricane Study based on 1980 Census)

Storm surge calculations updated (Now based upon high tide)



1992 STORM SURGE MAP

2008 STORM SURGE MAP

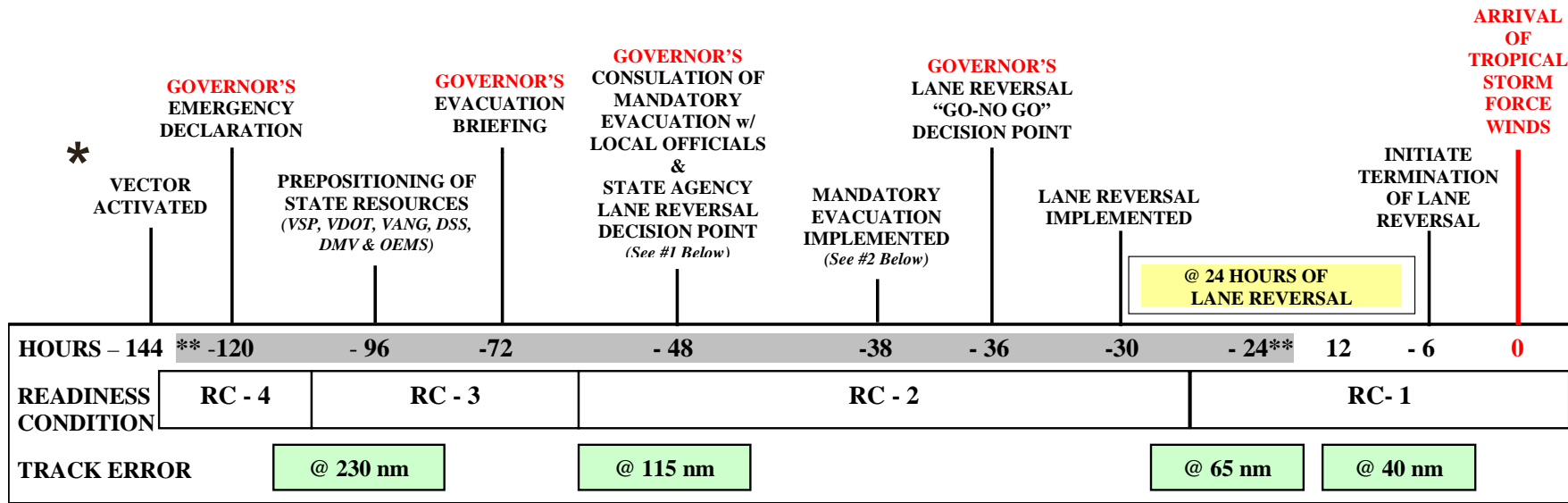


2008 Hurricane Traffic control Plan Revisions

- **Hurricane Gates completed at all interchanges**
- **Lane Reversal Implemented for strong Cat. 2 storm or higher**
- **Revised Incident Command Structure**
- **Acquired resource contracts (fuel, water, port-a-johns, wrecker services)**
- **Revised evacuation decision-making timeline**
- **Consider Route 58 lane reversal (future)**

Evacuation Action Timeline

EVACUATION ACTION TIMELINE



****GRAY BAR INDICATES FLOATING TIMELINE (MAXIMUM TIMES SHOWN) TRIGGER POINTS FOR VARIOUS HURRICANE THREATS FOR CATEGORY ONE TO CATEGORY THREE HURRICANES****

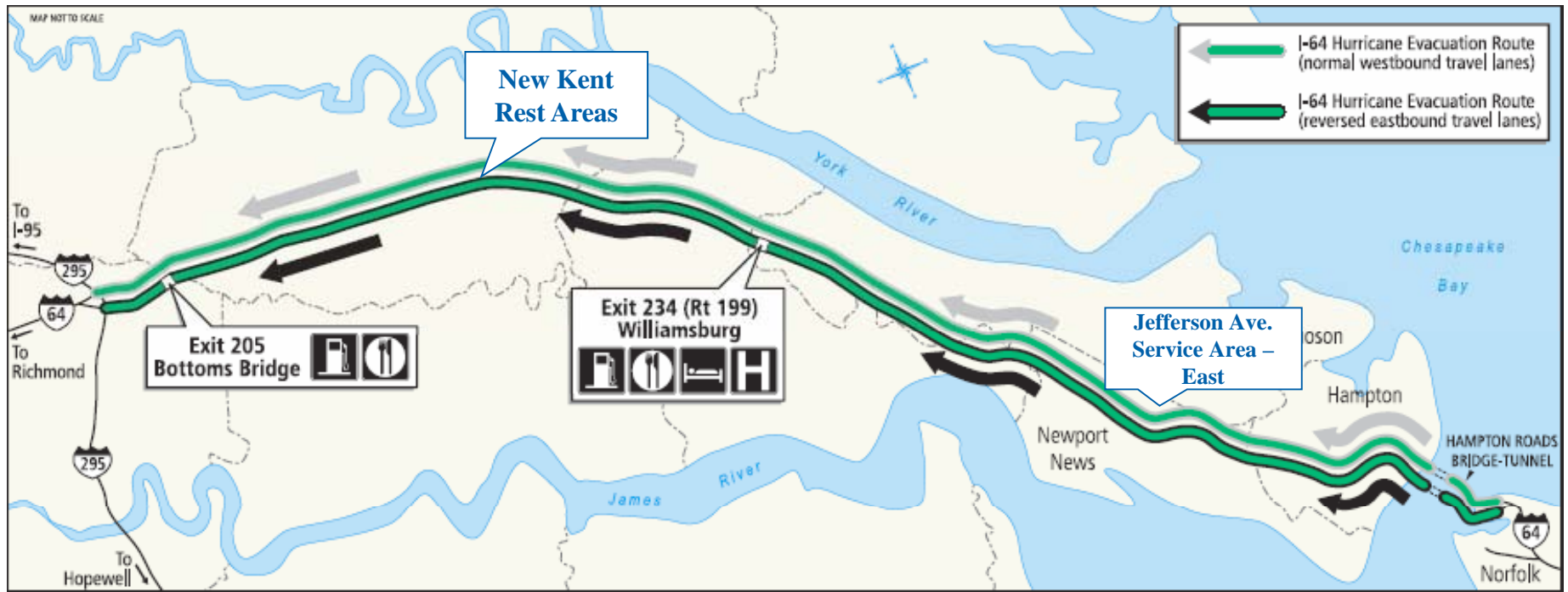
#1 – State resources move from pre-staging areas to duty post with lane reversal decision.

#2 – Evacuation Implementation Point for Southside Hampton Roads WITH or WITHOUT lane reversal. (Bowers Hill Evacuation Traffic)

Note: VaNG requires @24 hours mobilization time for Lane Reversal field deployment

VECTOR - Virginia Evacuation Coordination Team for Operational Response

I-64 Lane Reversal



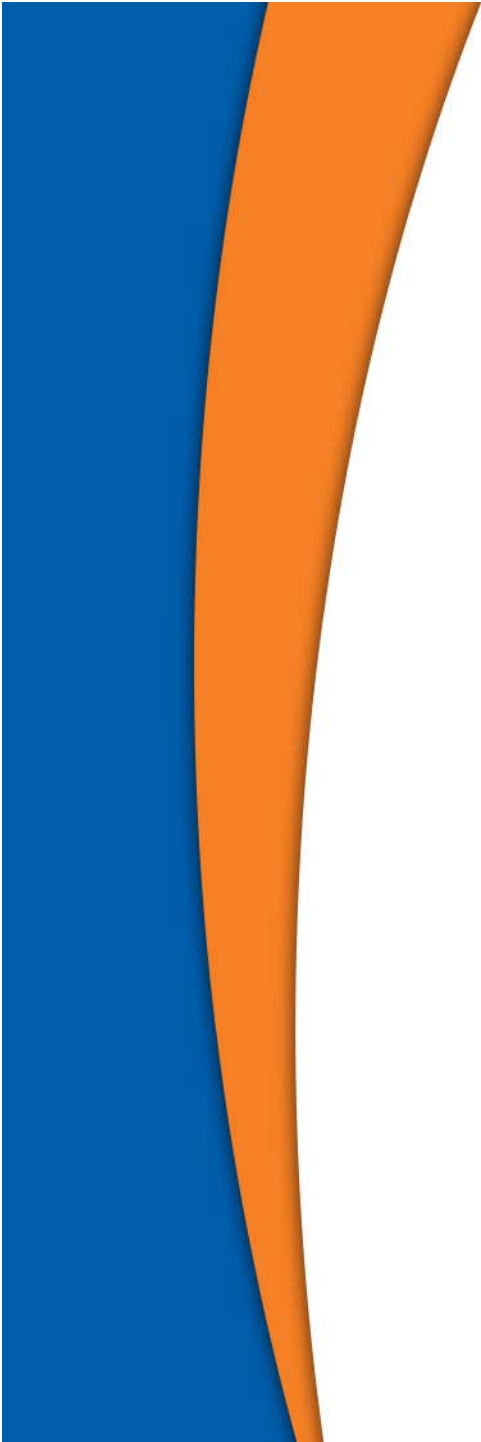
Hurricane Planning Documents

Commonwealth of Virginia Emergency Operations Plan

Volume 5 - Virginia Hurricane Response, June 2009

Annex B: Evacuation

<http://www.vaemergency.com/library/plans/hurrplan/index.cfm>



 **VDOT**

The logo for the Virginia Department of Transportation (VDOT). It features a stylized orange symbol on the left, which is a thick, curved line that starts at the top left, curves down and to the right, and then curves back up and to the right. To the right of this symbol, the letters "VDOT" are written in a bold, blue, sans-serif font.